

# **HAYLE PUMP NEWSLETTER**

**FREE COPY, Please take one**



Hayle Pump Newsletter  
Passmore Edwards Institute, 13-15 Hayle Terrace, Hayle TR27 4BU  
[www.haylepump.org.uk](http://www.haylepump.org.uk)

**Issue 101 produced by:**

**Editor**

Brianna Breeze  
[editor@haylepump.org.uk](mailto:editor@haylepump.org.uk)

**Desk Top Publishing**

Stevan Breeze  
[dtp@haylepump.org.uk](mailto:dtp@haylepump.org.uk)

**Treasurer**

Position vacant  
[treasurer@haylepump.org.uk](mailto:treasurer@haylepump.org.uk)

**Advertising**

Anne-Marie Rance  
[ads@haylepump.org.uk](mailto:ads@haylepump.org.uk)

**Secretary**

Shirley Thompson

**Subscriptions & Web**

The Hayle Pump can be viewed and downloaded online at;  
[www.haylepump.org.uk](http://www.haylepump.org.uk)

For those readers who would like to have a copy of the Hayle Pump sent to family or friends, please send a cheque

or postal order made payable to

**Hayle**

**Pump Newsletter** for £3.00 P&P charges (6 issues) and send to:

**HAYLE PUMP SUBSCRIPTIONS**

35 Penpol Terrace, HAYLE TR27 4BQ.

Please state delivery name & address.

**Code of submission**


The Hayle Pump would like to remind readers that the items, or articles and Public Notices are accepted as points of view and are not necessarily the opinion of the newsletter team.

**Items received should be a maximum of 400 words and may be edited or omitted due to limitations on space.**

Correspondents are reminded that all material submitted must be signed with their name and address, and if possible, telephone numbers for validation. This will not be printed if you do not wish it to be. News, letters, notices etc. must be emailed to the [editor@haylepump.org.uk](mailto:editor@haylepump.org.uk) or dropped off at **Bigglestons** or **Passmore Edwards Institute** .

**Advertising Deadline**  
**13<sup>th</sup> March 2012**

**Extras - Read all about it...**

All articles marked with a  have been edited to fit within the pages of The newsletter. Full uncut versions can now be viewed on the Hayle Pump website

[www.hayle pump.org.uk](http://www.hayle pump.org.uk)

## Display Fixed Sizes and Advertising Rates

Full Page (190 x 130mm) £90.00

Half Page (130 x 95mm) £30.00

Quarter Page (63 x 95mm) £15.00

Eighth Page (63 x 42mm) £10.00

## Guidelines for Artwork Submission of adverts

Artwork must be submitted in the following format and the sizes shown in the table above.

Artwork print-ready high resolution 300dpi .pdf or .jpeg in grayscale mode.

**Full specification and guidelines are available for download by visiting the website; [www.haylepump.org.uk](http://www.haylepump.org.uk)**

### A Note to Advertisers

To ensure inclusion to the Newsletter, your advert needs to be paid for in advance, or no later than the 13th of the preceding month of release

We are having to operate a stringent first come first served basis. All adverts that do not meet the deadline will be held on a backup list.

**If this process is not adhered to, the additional time spent on last minute changes, additions and amendments causes a knock on effect and can ultimately hold up the printing of the Pump and delay the release date.**



Did you know that Hayle has a thriving, 60 strong mixed voice adult choir? Local Vocalz meet on Monday evenings at 8pm in Passmore Edwards Institute and new members are welcome, particularly additional gentlemen. Some members read music, but not everyone. If you don't read music, you will soon learn the basics.

Local Vocalz was founded in October 2010 and Hayle based conductor and choral clinician, Neil Shepherd set the choir a challenge to prepare an entry for Camborne Music Festival, giving them just 6 weeks to form the choir and get up to a reasonable standard! The 28 members at the time rose to the challenge and won their class. Since then, the choir has more than doubled in size and now has some 60 members, many of whom are in the 20 to 50 age range (young by Cornish choir standards!) although the choir has some more mature members too.

Over the last year, the choir has performed in Truro Cathedral, St Mary's Church Penzance, St Michael's Helston, Edgecombe Chapel and Gwennap Pit. Members also competed in Wall Music Festival, obtaining joint first place with Laudate Chamber Choir.

*Continued on next page....*

...Continued

In the autumn the choir sang at the "Last Night of the Proms" concerts for the conclusion of the St Ives September Festival and the Penzance Proms weeks and once again, competed in Camborne Festival. In December, the choir sang Carols in Truro Cathedral and joined Laudate, Father Christmas and Collegiate Brass for a Celebration of Christmas concert in Penzance. In May, the choir will be enjoying a weekend trip to Brittany for singing, socialising, shopping and, of course, wine tasting!

Being a fairly new choir in Hayle, people are only just starting to realise that the choir exists. We welcome invitations to take part in Concerts, charity events and

other performances, particularly in Hayle. The choir is also keen to establish a link with a local charity or organisation with whom we can build links for Christmas charity fundraising in December 2012.

To find out more about Local Vocalz, log onto the choir website which can be found at [www.localvocalz.co.uk](http://www.localvocalz.co.uk) or call Neil Shepherd on 01736 759944, E-mail: [neilshepherd@yahoo.co.uk](mailto:neilshepherd@yahoo.co.uk)

Hayle Archive would like to contact the gentleman who kindly donated Hayle Pump editions to Hayle Archive a few weeks ago. Please would he call in to the Archive, which is open Tues and Thurs 10am to 1pm?



## FLOWER TIME

**freephone: 0800 0560711**

**telephone: 01736 757006**

**email: [flowertime@btconnect.com](mailto:flowertime@btconnect.com)**

We stock a large range of fresh flowers, silk flowers, plants, greeting cards, vases & containers, jewellery, candles and much much more.

### **NOW IN:**

Over 4000 hand selected Greeting Cards, Valentine's and Mother's Day Cards now on Sale

Wide range of Wrapping Paper and Gift Bags

Great gift ideas by Umbra, Gisela Graham & East of India.

Designer Jewellery by Carrie Elspeth & Buttonlove.

**Order online and spend over £30.00 excluding delivery & get 5% discount quote PUMP.\***

**Delivery service available locally, nationally and internationally.**

**[www.wesendflowers.co.uk](http://www.wesendflowers.co.uk)**

**[www.flowertimeflorist.co.uk](http://www.flowertimeflorist.co.uk)**



**CHELSEA GOLD  
MEDALIST**

\*Conditions apply

17 Penpol Terrace, Hayle, Cornwall, TR27 4BQ

## **Bodriggy Surgery** **Patient Participation** **Group**

Patient Participation Groups work with their practices to provide practical support, to help patients to take more responsibility for their own health and to provide strategic input and advice. They are based on cooperation between the practice staff and patients. They help to improve communication. Membership of the group shall be open to all persons over the age of 16 who are patients of the Practice.

The aims of the group are to help:

- \*improve communication between patients and staff of the practice.
- \*suggest ways for improvement

within the practice and day-to-day running.

- \*promote health education to the patients where appropriate.
- \*promote local support groups
- \*raise funds to enable the group to be self-sufficient.

If you are interested in becoming a member please feel free to come along to our next meeting at Bodriggy Health Centre on:  
Wednesday 8th February at 7:00pm

The Hayle Archive's web address is [www.haylearchive.org.uk](http://www.haylearchive.org.uk) and not as printed in issue 100.

The email address is [haylearchive@haylearchive.org.uk](mailto:haylearchive@haylearchive.org.uk) and the telephone number is 01736 753962.

# **Cspray**

## **Baths and Kitchens**

### **Bath Resurfacing and Repairs**

---

### **Pressure washing Domestic and Commercial**

Patios ● Driveways ● Paving  
● Decking ● Walls

- no area too small -

**Contact for details:  
01736 756077**

# **PLANTECH**

## **THE FRIENDLY RELIABLE SERVICE**

- **Lawns cut and borders weeded**
- **Hedges trimmed**
- **House, garden & building waste taken**
- **Garden clearance work**
- **Gravel, sand, topsoil delivered & laid**
- **Garage and loft clearances**
- **Free no obligation quotes**

(Tel) 01736 754401 / 07979546434





The Cornwall Property Letting Agency  
residential letting specialists

We are an established Letting Agency based in the Hayle area and are actively seeking new Landlords to increase our portfolio. We deal solely with residential letting and as such give a specialised and personal service to our Landlords.

**WE OFFER COMPETITIVE RATES  
AND DO NOT CHARGE VAT GIVING  
20% LESS COST TO THE LANDLORD**

For further information  
please contact us on

**01736 741108 or 01208 871061**

email us: [cplacornwall@aol.com](mailto:cplacornwall@aol.com)  
[www.cornwallpropertylettingagency.co.uk](http://www.cornwallpropertylettingagency.co.uk)



The Cornwall Property Letting Agency  
residential letting specialists



Save Our Sands seems to be attracting international interest and support. A European television channel is making a documentary programme entitled "Sand Wars", focusing on the crucial role of sand as a primary resource of our modern society, and the consequences of sand dredging and erosion on the coasts and their eco-systems. They have asked SOS to tell them about the experience of Hayle and St Ives Bay. More about the SOS contribution will be published in a future edition of Pump which will highlight the loss of up to a million tonnes of sand sold to agriculture, and the present understandings that have been negotiated.

Howard Lyons, Deputy Chair of  
Save Our Sands

**Des Button**  
**SPRINGFIELD**  
**33 Clifton Terrace**  
**Hayle TR27 4BP**  
**ELECTRICAL**  
**SERVICES &**  
**SUPPLIES**  
**01736 753211**



**PART P  
REGISTERED**



### **Hayle Decorative Lights Raft Race 2012**

Advanced notice: We will be holding our annual raft race on Copperhouse Pool on 5th August 2012. For further details contact Nick Farrar on 07792632635 or Richard Horwell on 01736 752597. Come and join the fun and have a great day out!

## Praze Hayle Male Choir



November saw the choir at the Camborne Music Festival where the good news is that we won and brought

home the cup! The less good news is that it turned out that we were the only Male Voice Choir entered in the entire competition - a sad decline from former years. Still, a win is a win!

The year ended on a spectacular note for the choir with two splendid concerts. The first was at Ventonleague chapel on Sunday December 11th when the full choir, together with the ladies of the St. Piran Singers, appeared at the annual Christmas Carol Concert - this

has been a regular event for the choir over several years and one with which it is always proud and pleased to be associated. A good sized congregation enjoyed the two choirs' choices of carols sung separately as well as several joint items.

Saturday 17th saw the choir at Phillack Church for the first time in a Christmas performance as part of the Church's Christmas Tree Festival and again alongside the St. Piran Singers. The change of venue proved to be everything that could have been hoped for; Councillor John Coombe and Hayle Mayor, John Bennett, contributed readings (for which they are both sincerely thanked) and the singing was, by common consent, inspired. The candle-lit nave of the medieval church provided the perfect setting



**17th** edition  
**BS7671**

**Webb & Philp Ltd**  
electrical contractors



### All aspects of Electrical work undertaken

Free Estimates, No Job Too Small  
Prompt, Reliable, Fully Qualified, Est. 1972

- ✓ Re-Wires
- ✓ Security
- ✓ Showers
- ✓ New Build
- ✓ Testing
- ✓ Maintenance
- ✓ PAT Testing
- ✓ Extra Sockets & Lights

Telephone/Facsimile 01736 753651    Mobile: 07768 210227  
email: [electricians@webbandphilp.co.uk](mailto:electricians@webbandphilp.co.uk)

for an atmospheric and moving performance which captivated a capacity audience (Standing Room Only!) . It must be admitted that the partial failure of the Church's electrical system necessitated at least some of the candles in use, and was responsible for a slight delay to the start of the proceedings which was, however, endured with great good humour by the congregation.

The choir has returned to its rehearsals and confidently expects that 2012 will turn out to be as successful as last year.

Interested in joining? Ring Don Metcalf on 01736 757720

## **P G FRANKLIN**

Chapel Hill, St Erth

Carpenter & General House Repairs  
Garden Landscaping

NO JOB TOO SMALL

Telephone: 01736 757360

Mobile: 07778 739341

## **The End of an Era at Phillack Church Hall.**

We have had so much fun over the past seven years running the Flea Markets on Fridays and the monthly Collectables Fairs on Sundays at Phillack Church Hall. The years have flown by and now we need to change direction and move on. We would like to thank all our stall holders and customers for their excellent company and support. Gillian and Graham wish you all the very best for the future.

We are still buying and selling quality collectables and can be contacted on 01736 806444, [gng@cormelian.com](mailto:gng@cormelian.com) or find us on Ebay, username 'Cormelian.'

## **The Sleepy Hollow**

Your Alternative Gothic Gift Shop

**Family run Gothic Gift shop.**

Selling a wide range of items, from Gothic gifts, to candles, incense, clothes and more.

Visit our shop at Unit 3 - Pratts Market,  
Chapel Terrace, Hayle TR27 4AB

**07747 078274**

[www.thesleepyhollow.vpweb.co.uk](http://www.thesleepyhollow.vpweb.co.uk)

## **NICK FARRAR**

**WINDOWS & CONSERVATORIES**

8 MARSH LANE, HAYLE, TR27 4PS

NICK FARRAR

- BESPOKE WINDOWS & CONSERVATORIES
- INTERNALLY GLAZED WITH STAINLESS STEEL SHOOTBOLTS
- WHITE/MAHOGANY/GOLDEN OAK
- CLEARLINE GLAZING
- FULL REPLACEMENT FACIAS & GUTTERING
- 10 YEAR GUARANTEE ON ALL INSTALLATIONS

For a free quotation call...

**01736 757818 or 07792 632635**

## Plants on the Towans

No. 33 Common Privet,  
*Ligustrum Vulgare*



There are about 40 plants in the genus *Ligustrum* & this is our native, also known as European Privet; native also to Africa and SW Asia. As is quite often the case with plant species, in areas where it has been introduced by us clever fellows it has become a problem and labelled "invasive". This is also the case in New Zealand, Australia, the U.S. and Canada.

Privet grows well on the towans; there is one on Hayle Towans which is about 15 feet tall and, of course, they make a great windbreak.

Commercially our Common Privet has been eclipsed by the Japanese variety, as that one tends to hold on to its leaves better in winter. At the moment the ones exposed on the towans are getting a bit thin on the windward sides. They usually flower up here in June and, although I love the fragrance, the pollen can be a problem for people who suffer from asthma. It is for this reason that it has been made illegal to plant in New Zealand. The little dark purple berries

## Millpond View Care Home

– Hayle –



- Permanent and respite nursing care
- Registered care home
- Skilled, trained nurses
- Experienced care assistants
- Excellent support staff
- Lovely location overlooking Millpond

**01736 752759**

## LINDSAY'S DOG GROOMING

*Dog grooming for all sizes,  
breeds & coats.  
Specialising in Poodles.*



For more information,  
contact Lindsay on  
**01736 753864 or 07792 849240**

.....  
*Situated at  
Connor Downs  
in Hayle*

*Local  
collection  
& delivery*

that follow are also not good for our species to eat. However, Thrushes thrive on them and this is how they have been propagated away from their service as a garden hedge. Privet is the home of quite a few species of moth; some years ago I found the body of a Privet Hawk Moth, the largest moth I've ever had in my hand, which was about 3 inches long with amazing eye patterns on its folded wings. Culpeper's Complete Herbal lists some medical uses for privet but I couldn't find any references in contemporary herbals.

Michael Locke.

# BUSH MONKEY

GARDEN SERVICES

Over 20 Years Experience with that personal touch



- Qualified • Reliable
- Efficient • Fully Insured

We can offer:

- Garden Maintenance & Design
- Planting Schemes (inc. sustainable)
- Lawn Care & Maintenance
- Weed & Insect Control
- Tree, Hedge & Shrub Pruning
- Decking & Patio Areas Created
- Gravel & Shingle Areas Created
- Overgrown Gardens Reclaimed
- Power Washing & Cleaning
- Garden Clearance
- IF IT'S NOT LISTED ABOVE - JUST ASK

call Anthony for your FREE no obligation quote  
07899 910 217 ~ 07825 881078  
email: bushmonkeygardenservices@yahoo.co.uk



**David N'jie**  
PAINTER & DECORATOR

07944 156995 01209 831397

dn-jiepainter-decorator@hotmail.com  
Trethannas Cottage, Praze-an-Beeble  
Camborne TR14 0LH



*ccc*

CORNWALL CHIROPRACTIC CLINIC

— maintaining your lifestyle —



**Now Available at the Clinic**

Chiropractic	Sports Injuries
Chiropody/Podiatry	Hypnotherapy
Holistic Therapies	Acupuncture
Diet & Nutrition	Pilates

Tel: 01736 759088  
enquiries@cornwallclinic.co.uk  
www.cornwallclinic.co.uk

21 Foundry Square, Hayle, TR27 4HH

T O

Come to

# BLEWETTS

TOY SHOP

19 Penpol Terrace, Hayle  
TR27 4BQ

Y S

01736 753012



## **Gwinear School**

This year Gwinear pupils delighted audiences with a traditional Nativity scene, embellished with some fierce Roman soldiers and a jazzy midnight theme.

Our youngest pupils delighted pupils and parents alike with their lovely re-enactment of the famous journey to Bethlehem. Many shepherds controlled fluffy sheep whilst holding their crooks tightly, and the three kings made sure their gifts arrived on time. Roman soldiers were on hand to complete their census whilst the angels sang the good news to all mankind.

Our lovely choir told of the message to Mary and of the message told from the mountain, with lovely solos by Niamh, Lucy and Zara. Pupils enjoyed their time on stage, playing to a packed house no less than four times.

**Shoobox Appeal:**

This year we have had a fantastic response to our shoobox appeal, collecting over 40 boxes for Operation Christmas Child for children in need across Africa, Eastern Europe and Central Asia. The children at Gwinear School have really got behind this wonderful project and we would like to thank everyone who contributed to this.

# Shelley's Furniture Emporium

Vintage & Shabby Chic'  
Household and Decorative Items

Beautiful and Original ideas for  
Christmas, Birthdays and Home

Greetings Cards and Gift  
Vouchers

Free furniture delivery within a  
5 mile radius

10.00am - 4.00pm Monday to Saturday

**01736 756808**

Pratts Market, Hayle TR27 4AB

## Hayle Food Bank

Hayle Food Bank opened its doors on 7<sup>th</sup> January for the first time. The Food Bank is based in Hayle Methodist Church and is open from 10-12 each Saturday Morning.

The Food Bank has been set up by volunteers in Hayle including members of the Labour Party, Churches Together, local businesses and Town Council. Cllr. Ninnes expressed her thanks to all the volunteers who had worked hard to ensure a successful opening and to the community of Hayle for an excellent response especially the

## **Railway Siding and Historic Sand Drag Restoration Project**

There will be a working party on Sunday 12 February to continue to clear up the footpath from Hayle Terrace to the railway station.

Anyone interested in lending a hand please turn up at the end of the cutting (near Grameen Tandoori) at 10am. Please wear suitable clothing and have some work gloves. Jeff Turk.



Co-op store and Hayle Churches Together: "People have been very generous in giving time and food, the support has been over whelming. One local business, Webb and Philp electrics dropped off a huge bag of food, Light and Life church have collected huge amounts of food and a local school collected over £50 to donate towards food. I cannot thank the local churches enough, without their support we would not be able to operate. The Food Bank aims to give temporary support to people in the community who have hit a time of crisis such as losing employment or family break up. Permanent employment is not

always easy to get and often people who take temporary work struggle to make ends meet when that work ends. The food bank aims to help people be able to take temporary work which will hopefully lead to greater chances of permanent work“.

People are referred to the Food Bank by various local agencies. These agencies will give you a voucher for food which can be presented at the food bank between 10 and 12 each Saturday. The Food Bank will usually support a family for 3 weeks if they are needed. There is definitely a need for a food bank in Hayle. We provided 33 people with a week's worth of food on the 21st January, so any

donations of in date, non perishable foods would be gratefully received. Food can be donated at the CO-OP in Hayle, or at any of the local Churches.

Jayne Ninnes

Collection and Delivery Service



**Pawfection**  
Dog Grooming

Joanne Maloney City & Guilds Qualified  
Tel: 01736 851 357 Fraddam, Hayle  
Mob: 07973 545 656  
Email: pawfection2011@hotmail.co.uk  
www.pawfectiondoggrooming.com

# JC ELECTRICAL

Your complete 24 hour Electrical Service

**Rewires • New Build • Lighting •  
Showers • Extra Sockets • Heating**

City & Guilds Qualified (Tests to BS7671)

Part P registered

Prompt and reliable friendly service

Free estimates and all work guaranteed

**Office: 01736 754543**

**Mobile: 07739 577549**



## The Rainbow Coffee House

This meets every Saturday morning at the Methodist Church Hall at 10am - midday for friends old and new to meet up and have a cup of coffee or tea, cakes and biscuits.

Most people make a donation, which over the past year came to a total of almost £2,000 and was distributed to a host of worthy causes.

The volunteers at the coffee house give thanks to all who support them every Saturday morning.

Donations for 2011 were:

Church Flowers	£50
Boys Brigade	£50
Torch Group	£50
Methodist Relief & Development Fund	£120
Shelter Box	£250
Ali's Dream	£335
McMillan Nurses	£50
Mission Aviation Fellowship	£50
Survive Alive Camp Link	£75 £50
Mother & Toddler Group	£50
Food Bank	£25
Kernow School	£50
New coffee pot	£50

Day Care Centre £50

Hayle Decorative Lights £50

Precious lives Gambia £50  
£50

Merlin Project £50

Table Tennis Club £50

Penhaligon Friends £50

India £75

F.R.O.G. youth club £50

M.R.D.F. £50

Junior Church Bazaar £55

New rainbow t-shirts £30

Heyl Town Band £50

### JSH Deodorising Services

- Window cleaning service
- Gutter & Wheelie bin cleaning
- Deodorising Service

We provide a high pressure deep cleaning service with a reach of 8 metres, ideal for gutters and glass conservatory roofs. Also available, a low level pressure cleaning option perfect for patios, driveways and decking.

**Call: 01736 753520**

Visit our websites for further details  
[www.jsh-window-cleaning.co.uk](http://www.jsh-window-cleaning.co.uk)  
[www.jsh-deodorising-services.co.uk](http://www.jsh-deodorising-services.co.uk)

## Millpond Update

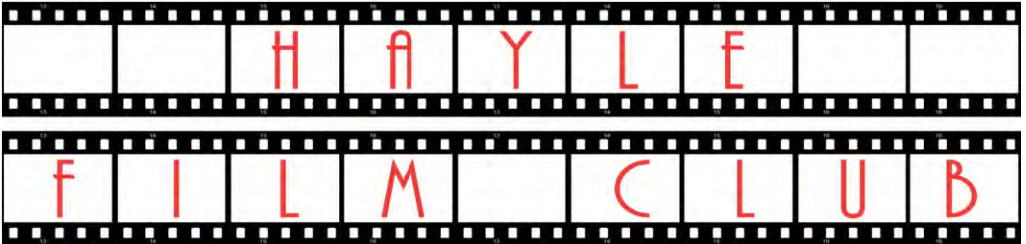
“Where Did the Snow Go?”

Last Christmas it was icicles, snowballs and sleigh bells, but all that is but a distant memory. This year it was rain and more rain driven on by a force eleven hooligan. A 'Green Christmas' with all the trimmings!

The only bonus is that there is more water going into the ponds and it is almost silt-free. Gone is the brown Windsor soup which caused us so much trouble in the past now that the mounds of raw earth deposited at the bottom of Millpond Lane have been stabilised by a covering of grass. The improved depth of water appears to have attracted a

new visitor to the Inner Pond. We are used to seeing great Northern Divers annually on Carnsew pool but to see one swimming and diving on the Millpond was a very unexpected sight indeed. Since 1985 the Ponds have compiled a Wildlife catalogue and the Great Northern Diver has been added to our list.

Our best Christmas present has to be the return of Freya, our young female swan. She has been on Copperhouse Pool for several months with a group of adolescent cygnets with an adult 'mentor' swan. They thrived on the Estuary all summer, but now they have become more independent. When Freya decided to leave the group and



### Let's kick off a community cinema in Hayle!

Trial screening on Saturday 25<sup>th</sup> February, 7pm  
Passmore Edwards Institute

#### **Midnight in Paris**

Written & directed by Woody Allen

*Followed by refreshments plus discussion of the film  
& an opportunity to join the planning committee*

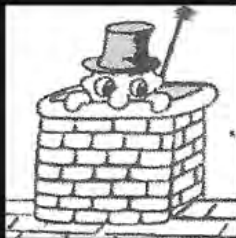
Tickets £3 per person (all ages) – Cert 12A  
Box office at Biggleston's from 1<sup>st</sup> February  
and on the door (subject to availability)

For more information, contact  
Donna Anton 01736 753184  
donna@donna-anton.com

return to the Millpond just before Christmas, she did not come alone but brought a very fine-looking male with her. Whether they will stay together on the ponds and Freya has actually found her Odin only time will tell, but for now they appear to be a contented couple. From the comments that I hear from time to time I know that there is deep concern about the general state of the ponds and the Inner Pond in particular. We cannot remove the silt because it is regarded as toxic waste, but it can be repositioned around the site, but like most things it comes with a price tag. What we really need is a 'Good Fairy' and they are a very rare breed! So in the meantime we do the best we can to keep the ponds in a reasonable state for everyone to enjoy  
All the best to you all in 2012.

Georgina Schofield

Volunteer Wildlife Warden



Lawrence Butcher  
**Chimney sweep**

Brush N Vac, Cows Fitted,  
Reliable Clean Service,  
Free Advice

Enfield Farm  
30 Hayle Road, Fraddam  
Hayle TR27 6EH

01736 850033  
07966 547829  
loloubutcher@aol.com

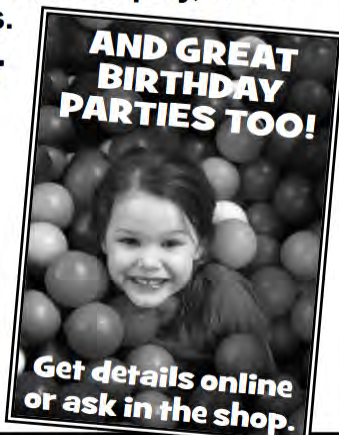
# WONDERFUL WILDLIFE AND INDOOR PLAY AT PARADISE PARK!

Cornwall's award-winning wildlife sanctuary with rare tropical birds, penguins, otters & farmyard friends. Plus fantastic JungleBarn indoor play, Paradise Island outdoor play, and a full timetable of feeding and flying events.



Return Tickets  
just £3.50  
Pirate Trail at  
half term

**FOR OUR LATEST  
NEWS AND TO  
HEAR ABOUT  
SPECIAL  
DISCOUNT  
OFFERS JOIN US  
AS A FRIEND ON  
facebook**



**AND GREAT  
BIRTHDAY  
PARTIES TOO!**  
  
Get details online  
or ask in the shop.

Paradise Park, Trelissick Road, Hayle  
Open every day at 10am Infoline: 01736 751020 [www.paradisepark.org.uk](http://www.paradisepark.org.uk)



## **CENTRAL GARAGE** CAR SALES AND FILLING STATION



...your local petrol station

**Now in stock**

Coal, logs and kindling, Calor Gas, Camping Gaz  
Wide selection of hot & cold drinks, snacks, sweets and groceries

**Get yourself ready for winter**

Antifreeze, Screenwash, De-icer, De-misting cloths. and a large range of car accessories

Central Garage offers a large selection of quality used cars and can be found online  
[www.centralgarage.info](http://www.centralgarage.info)

OPEN EVERY DAY 7.00 AM - 9.00 PM

6 Hayle Terrace, Hayle, Cornwall TR27 4BS

 **01736 755885**

**HAYLE FRIENDS GROUP**  
**CHILDRENS HOSPICE SOUTH**  
**WEST.**

December 2011 was a memorable month in the history of Childrens Hospice South West when the first families of life limited children in Cornwall and Plymouth were able to enjoy the wonderful facilities provided by Little Harbour in Porthpean. It had been an amazing feat of fund raising over a 4 year period when £5 million pounds had been raised and the hospice built. For those who have been able to visit have been amazed and proud that their fund raising activities have achieved such a wonderful building and for such a marvellous purpose. *Continued next page*

*Below:*

*Hayle Friends Group visit Little Harbour*



**Want to play music?  
You're never too old!**

**Learn music the fun way  
with Graham Smith**

I'm a Registered Guitar tutor, a coach and session musician with over 30 years' experience. I believe that anyone can learn to play. I can help you to learn guitar, bass guitar and blues harmonica and to write songs and record them.

**Call me on 01736 740141**  
(based near Penzance)

[graham@musictuitioncornwall.co.uk](mailto:graham@musictuitioncornwall.co.uk)  
[www.musictuitioncornwall.co.uk](http://www.musictuitioncornwall.co.uk)



# Fernleigh

## BED & BREAKFAST

En-suite, Colour TV,  
Coffee & Tea making  
facilities in all rooms

 NON SMOKING 

**26 Commercial Road**

**HAYLE, Cornwall**

**TR27 4DG**

**Call 01736 752166**

mrploppy@fsmail.net

Mike & Lyn Reffold

The Hayle Group of friends are so very, very grateful for the support they have received from everyone in the Hayle area enabling them to have raised £27,500.00 in 2011. The wonderful story in the last issue of the Hayle Pump concerning Mrs Violet King epitomises the generosity of people no matter what age. It was great to know Violet was able to visit Little Harbour.

Whilst children and their families will be fully using Little Harbour from now there will be open days when visits can be made and they will take place the first Monday in each month starting in February. Anyone wishing to  
*Continued next page...*

## Computer / Laptop Problems?

I can restore your computer or laptop to full working order  
for a fantastic price

### NO CALL OUT CHARGE

Professional repairs and maintenance of  
full systems and networks

Call today for a FREE no obligation quotation

**PC REPAIRS • PC NEW BUILDS • PC REBUILDS •  
PC UPGRADES • PC TRAINING • DATA RECOVERY •  
NETWORK INSTALLATION & MAINTENANCE**

For a prompt and reliable service  
call Tim Cogher at TeeCee Tech today



**07730 283433**



**01736 850798**

# **HANDYMAN**

**EXPERIENCED & RELIABLE**

**“NO JOB TOO SMALL”**

*Completing all those jobs  
you've been meaning to do!*

Painting / Decorating  
Repairs / Flat-pack Assembly  
Fencing / Sheds

**CONTACT**  
**RICK HARVEY**  
**01736 752811**

attend any of these visits can  
contact Jill Sharpless on  
01736756896

The Group will continue fund  
raising in 2012 and is already  
grateful to the Hayle Bingo Club  
who collected £600.00 over 2011;  
a wonderful amount to start off  
2012.

Should anyone want any help at all  
in fund raising or has any ideas  
concerning fund raising then the  
Hayle Group would love to help  
and they can contact Jill on the  
above number. The Friends Group  
has been operating for a number  
of years and can provide any fund  
raiser with advertising, contacts  
etc. that could make the fund  
raisers task a little easier.

John Burrow



## **Solar Roofing Services**

[www.solarroofingservices.co.uk](http://www.solarroofingservices.co.uk)

### **Generate a tax free Income and Electricity from the sun**

Your local accredited solar panel installers

Clean energy for the future

**For details telephone: 01209 832182**

**6 Penhale Road, Carnhell Green, Camborne TR14 0LT**

# The Council Corner



## February & March 2012

### 2012/2013 Precept Demand

In previous years Hayle Town Council has endeavoured to keep its precept, this council's element of the council tax, to the minimum required and in line with inflation. However, this year the Council has had to face a number of uniquely challenging issues relating to the handing back of amenity sites, previously leased to Penwith District Council and subsequently to Cornwall Council, and in preparing to take on additional devolved services from Cornwall Council.

The amenity sites include The Recreation Ground, The King George V Memorial Walk, The Plantation, Station Hill Gardens and The Millpond which cost approximately £100,000 per annum to maintain. Hayle Town Council and Cornwall Council have devised an historic transition agreement that will see the management of these open spaces transferred to Hayle Town Council by 2014. The transfer will take place over a three year period necessitating an increase in precept in 2012-2013 of £33,000 and similar sums in the following two years.

In addition to this, management of the sites will have staffing and insurance implications which have further impacted on the precept increase together with general inflationary pressures running at 5% over the past two years. The precept payable is an increase of £55,273 which equates to a rise of £18.57 for a Band D council tax payer in a full year or £1.52 per month.

This Council has little alternative other than to meet the costs of maintaining the sites concerned which are open to and enjoyed by the public and accordingly closure is not considered an option.

Annual Citizens and Organisations of the Year Nomination packs are available from the Town Clerk's office for the Citizens and Organisation of the Year Awards. The Council is also seeking nominations for Hayle Young Person of the Year and Hayle Youth Organisation of the Year. The deadline for all nominations will be Friday 23 March 2012. Hayle Community Centre Space is available for regular sessions or one off bookings. Remember that the CAB, Link into Learning and others hold regular sessions and surgeries. There is also, currently an entire first floor self-contained unit available on a long lease suitable as office and or meeting space ideally suited for a local, community based

*Continued...*

organisation. Contact the Town Clerk for details of services and available space.

Hayle Swimming Pool –  
Fundraising & Events Committee  
An inaugural meeting for  
volunteers interested in  
fundraising to assist in the  
development and secure future  
use of the much loved pool is  
being held on Thursday 23  
February 2012 at 7.30p.m. at  
Hayle Community Centre. Please  
spread the news; we hope to see  
as many of you as possible.  
Hayle Town Council  
Hayle Community Centre  
58 Queensway  
Hayle  
TR27 4NX  
01736 755005  
townclerk@hayletowncouncil.net  
www.hayletowncouncil.net

### **New dance classes for adults**

now at St Elwyn's Church Hall on Saturdays.  
Star, a professional dance practitioner who now lives in Ventonleague is really happy to be bringing her own inimitable style of teaching to Hayle. A veteran dancer who performed with such luminaries as Vince Hill, Mike Reid and Wayne Sleep in her youth, she took a 25 year break from dance before returning to higher education to study modern dance at degree level in 2006. In 2008 she

## **Adult Dance & Exercise Classes**

Ballet, Creative Dance or  
Aerobics  
Saturdays at St Elwyn's Church  
Hall, Hayle.  
Led by professional dance  
practitioner Star  
10% discount with this advert

For details  
07808 917683  
star@starthedancer.com  
www.starthedancer.com

Age 16 years to infinity  
all levels of experience catered  
for

**Come and have fun!!**

graduated with a Foundation degree in dance (distinction) at Truro College, where she was awarded the UPC prize; in 2009 she graduated with a 2:1 BA(Hons) in Theatre and Performance at the University of Plymouth, and then in 2010 obtained the PGCE in Dance with Truro College.  
Over the past few years Star has been privileged to work with Angela Praed Productions in various locations in Cornwall. Last year her newly reformed dance company, Echoes Dance Co., had their debut performance at St Mary's Church, Penzance,

and is pleased to have been asked back for the concert series of 2012. Next year will also see her performing with Shallal Dance Theatre.

A successful dance tutor on the part-time course curriculum at Truro College for several years, Star practises inclusivity in her teaching and welcomes learners of all abilities. She will be teaching classical ballet, creative dance and aerobics at St Elwyn's Church Hall every Saturday. She says; 'I am passionate that dance should be accessible to everyone, and am aware that dance classes for adults are not as readily available as those that cater for children.

Therefore I am overjoyed at having the opportunity to provide dance tuition for those of a more mature persuasion. All my classes are light-hearted, non-pressurised and cater for all ages and abilities.'

For more information call 07808 917683, e-mail:

star@starthedancer.com

or look her up on

www.starthedancer.com.

Class Timetable

9.00-10.00

Classical Ballet (general level)

10.00-10.30

Pointe Work (add on to 1st class)

10.45-11.45

Ballet for absolute beginners

12.00- 1.00

Creative/Contemporary dance

1.15- 2.15

Old Fashioned Aerobics

## P.D.H Builders & Roofing

High Quality Guaranteed Work

Contact: Paul Moyle

07989 075517 01736 719469

5a Bodriggy Street, Hayle TR27 4NB  
pdhbuilders1@hotmail.co.uk

FOR ALL OF YOUR BUILDING REQUIREMENTS



Serving *Hearty Breakfast* or  
*Light Lunch* all day.

Enjoy the finest *Cream Tea*,  
with 2 home made *Scones*,  
*Jam & Clotted Cream*.

Or treat yourself to a piece of  
our famous *Cheese Cake* or  
one of our other *Treats*.

25 Penpol Terrace, Hayle TR27 4BQ  
Tel: 01736 756 222

*A tutor who tooted the flute,  
tried to teach two young tooters to toot,  
said the two to the tutor  
,is it harder to toot or..  
to tutor two tooters to toot*

## **St Ives and Hayle** **Community Choir**

Members of the St Ives and Hayle Community Choir (part of Cornwall Community Choir) have had a busy time over the last year. The choir competed in Wall Music festival with great fear and trepidation, but nerves didn't stop them and they managed to hold Camborne Circuit Ladies choir to joint second place! A concert with the entire Cornwall Community Choir at Gwennap Pit raised £1,200 for Marie Curie Cancer Care and a summer concert in Truro Cathedral was a great success. In the Autumn, the choir sang at a wedding and took part in Camborne Festival, drawing joint second place with Heyl St

Piran's Singers. Later in the year, the choir sang at the "Last Night" of the St Ives

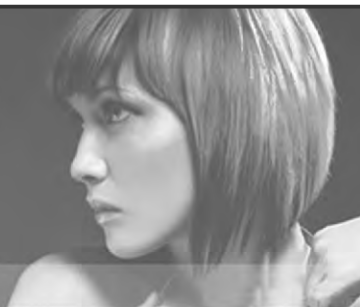
September Festival, entertained at the Riding for the Disabled Christmas Celebration at Lelant, participated in the Salvation Army Community Carol Concert, sang Christmas Carols in Truro Cathedral and St Ives Parish Church.

Membership of the choir is open to anyone who lives in the Hayle or St Ives areas. Rehearsals are in the afternoons from 2pm to 3.30pm on Tuesdays in the hall at St Anta Church at Carbis Bay. New members will be made to feel very welcome. There isn't an audition and you won't be asked to sing on your own. Experienced

**01736 752999**

hair.publicimage@gmail.com

19 Chapel Terrace, Hayle



*Public Image*

H a i r d r e s s i n g

Continued from previous page...

singers are just as welcome as those who haven't ever done some singing before. Why not come along and give it a try? Further details from Neil Shepherd on 01736 759944 or e-mail: [neilshepherd@yahoo.co.uk](mailto:neilshepherd@yahoo.co.uk) The choir website can be found by logging onto [www.cornwallcommunitychoir.co.uk](http://www.cornwallcommunitychoir.co.uk)

**Interesting fact**

**Brazil Nuts are Radioactive.**

Because of the extensive root system of the Brazil nut tree, the roots soak up the radium in the soil. Small amounts of this radium find their way into the nut. Although the amounts are small, the nut still contains 1000 times more radium than other foods..



# the bean belt

Coffee, tea and spices from  
Cornwall and around the world

Coffee beans freshly ground  
Selection of loose leaf and packaged  
teas from small speciality producers  
Spices ground on request  
Tea and coffee cups, spice tins and  
other related items of interest

Open Mon-Sat 9.30 -5.00  
Upstairs at  
Pratts Market, Hayle  
01736 752550  
[www.thebeanbelt.com](http://www.thebeanbelt.com)

## BIGGLESTONS

TRADING IN HAYLE FOR OVER 130 YEARS



Summer, Autumn, Winter and Spring, we can supply 'most anything  
Try us first for Hardware, Ironmongery, Paraffin and all your Garden Supplies

**01736 752219**



*Year 11 girls enjoying their trip on the London Eye.*

condensed version of Shakespeare's most magical play: 'The Tempest'.

They have been involved in all aspects of the production including direction, sound and costume design. The ten minute play was performed in front of an audience at The Hall for Cornwall' on Monday 23rd January to much acclaim.

Mrs Hubbard commented: 'the pupils really embraced this challenge and made the play their own with creative solutions to explaining the story in such a short time.'

But that's not all folks! The recent trip to London with Year 11 also took in two theatre visits to see 'Wicked' and 'The Woman in Black'. Head Boy Nick Pearson revealed that: 'the play was a terrifying horror full of twists and turns' and one pupil confessed that she couldn't sleep after seeing it!

The trip also included a VIP tour of Wembley Stadium, a trip on the London Eye, museums and, of course, a few hours on Oxford Street! Assistant Head Mr Graham, who organised the visit, applauded the behaviour of the students stating that they 'showed us off, not up. I am so proud of them!.

### **Drama, darling, drama!**

It's been a real drama at Hayle Community School recently! As part of developing pupils' appreciation and understanding of theatre, those studying GCSE drama embarked on a trip to Plymouth's Theatre Royal to see the acclaimed 'An Inspector Calls'. Pupils were mesmerised by the powerful characterization and awe-struck by the set design. The only negative part: 'that it had to come to an end'.

As watching live professional production is a requirement of the GCSE drama syllabus, all pupils benefited greatly from their experience: not only will they be able to take inspiration from the performance and complete an evaluation of the performance as part of their coursework, they will also be able develop their understanding of drama, experiencing the thrill of watching live theatre at its best. Pupils from the school's 'Monster Theatre Company' have also been busy working as an ensemble after school to develop a



**NEW Pineapple Range**  
NOW IN STOCK  
Come In And See

**Designer Frames**  
up to 33% discount

**Varifocals**  
from £119 complete

**Prescription sun glasses**  
from £59.90

**Rimless Spectacles**  
with 2 year anti-breakage  
warranty on lenses  
from £165 complete

**Photochromic Promotions**  
on Transitions/Kodak and  
Rodenstock lenses

## HAYLE

18 Commercial Road  
TR27 4DG  
**01736 753145**

## PENZANCE

21 Alverton Place  
TR18 2QP  
**01736 366106**

### ***Did you know?***

The Hayle area has been a focus for settlement and trade since at least the Bronze Age. Today Hayle's rich industrial past is recognised by being part of the UNESCO Cornwall and West Devon Mining Landscape World Heritage Site. This and lots more information at: [www.hayletown.co.uk](http://www.hayletown.co.uk)

### **BIZ AND BYTES**

**07974 647524    01736 755971**

If you require computer assistance, either training or to resolve a problem then give us a call. Visits arranged to suit you.

Looking after the home user and small business.

**WEBSITES • BROADBAND • TRAINING •  
COMPUTER SUPPLY • TYPING**



[www.bizandbytes.co.uk](http://www.bizandbytes.co.uk)  
[enquiries@bizandbytes.co.uk](mailto:enquiries@bizandbytes.co.uk)



**PASSMORE EDWARDS  
INSTITUTE**



## **MEETING ROOMS FOR HIRE**

Hayle's Village Hall  
has a variety of rooms  
for hire, suitable for  
2 to 60+ people.

For more information visit:  
[WWW.HAYLE-PEI.ORG.UK](http://WWW.HAYLE-PEI.ORG.UK)

Or call: **01737 756055**

13-15 Hayle Terrace, Hayle, TR27 4BU  
Charity Number 268429

We received this letter from a reader in Birmingham

Dear Editor

Re: Tales from the Archive on page 7 of your 100th edition of the "Pump".

Charles Knee was my great-grandfather. He still has descendants living in and around Hayle. It was amazing to see this piece of information. I can only remember the Hayle shop when my Uncle Donald owned it. It still sold everything and was a treasure trove for a child. I used to visit regularly to play with my cousin Mary, his daughter. My grandmother, Louisa, married

Ernest Rutter and lived at Trevassack Arch.

I have enclosed a list of some of the things I can remember. I hope this is of interest to you. Thank you.

Yours sincerely  
Barbara Spalding

PS We do enjoy the Pump and thank you and your team for producing it. Many thanks to Barbara for taking the time to write to us and her kind comments. The additional information appears in "Extras" on the Hayle Pump website, and has been passed on to the Hayle Archive.

## CALVIN GOODWIN

Painter and Decorator  
City and Guilds qualified  
***No job too small***

Tel: 01736 755639  
Mobile: 07594 031765

*Please telephone to discuss your requirements or to arrange an appointment for a no obligation quote*

[www.goodwindecorating.co.uk](http://www.goodwindecorating.co.uk)

## DO IT FOR YOU

The Complete Landscape &  
Garden Care Service

- Grass & Hedge Cutting
- Garden & House Clearance
- Decking & Fencing
- Patios & Paths
- Sheds & Summerhouses
- Pergolas & Ponds
- House Maintenance
- And Much Much More...

For a free quotation call  
Martin Penney

**01736 757185**

**07576 521238**

[doityou@live.co.uk](mailto:doityou@live.co.uk)

**Established for 10 Years**

## Nine Fantastic Issues!

After resurrecting the Hayle Pump and editing all of the issues from October 2010 until this one, Brianna is stepping down as editor.

I am sure you will join with me in congratulating her on doing a superb job.

Thank you Brianna.

Being sole editor is a difficult task and we are considering setting up an editorial team to help spread the load. If you would like to join our team (we have two volunteers already) and are willing to edit a few articles every two months, please contact me to discuss it.

We still need someone to help with the desktop publishing, too. If you have any interest in this, and have a computer at home, we will happily provide some training on the process. And we are always looking for volunteers to help spread the load in all areas. If you have a few hours to spare, let us know.

This is a community project - and a much appreciated one by all accounts - so please join in to help us Keep Pumping!

John Bennett, Hayle Mayor, [jb@john-bennett.com](mailto:jb@john-bennett.com), 01736-753184.

What did the hat say to the scarf?

"You hang around - I'll go on ahead."

# GUITAR TUITION

At Reasonable Rates.  
All Ages & Abilities.  
Beginners Welcome.  
Acoustic & Electric.  
Contemporary &  
Traditional Styles  
Also Banjo & Ukelele



**Call: 01736 753709**



**HAYLE DAY CARE CENTRE**  
**Commercial Road, Hayle**

An affordable day care facility for the elderly of Hayle, St Ives and district

Transport • Freshly cooked meals

Also includes bathing and hairdressing  
Therapy and lively social interaction

Always a friendly welcome

**Call 01736 755000**

## THE TALE OF TWO BRIDGES (AND A NEW ROAD)

2012 will see the access to North Quay served by a new road bridge in addition to its 'Listed' original (1877) iron swing version. This is part of the new infrastructure that also provides a new road to the Quay which is raised to comply with future flood alleviation regulations. The original bridge had a dual purpose for both road and rail use, with the capability of opening to allow boat passage to the Copperhouse Canal that accessed the Quays and the wet dock alongside the later Co-op store. The original 'Merchant Curnow's' Quay will still exist underneath the new road bridge, and is one of the earliest purpose built wharfs for Hayle. At the time Copperhouse was an industrial area and therefore the bridge had to be constructed to allow boat passage to continue as required. The swing bridge is of a substantial cantilever construction rated to take 100 tons; and was made to 'lift' slightly before being swung by a chain capstan. This was a manual operation using a hydraulic pump to provide the 'tilt' input. As North Quay increased its use the bridge had to support many steam (and later diesel) locomotive movements and with the Power Station operating this would have been a busy area, with quite a rail complex of its own. Wartime service in two World Wars would have seen a huge number of movements, although it retained its 'swinging'

ability, this had really ceased to be a requirement by then. Interestingly its weight capability allowed it to be used for all the heavy transport requirements during the building of the new North Quay road and bridge. It is a testament to the quality of its design and construction that it not only provided excellent service for so many years but was able to do so as the load requirements steadily increased whilst still being capable of 'moving'. In practice the substantial extra costs in providing a 'swinging' capability would have been an enormous financial burden that was probably never justified by the reducing need for access by boats. The new road bridge that is emerging alongside its partner will serve the redeveloped North Quay and connects to the raised highway that will access both the proposed new industrial requirements plus housing in the area. This will have a longer span than its predecessor, being supported by 4 substantial reinforced concrete plinths on which the road base beams will lay. The new road rises to a level approximately 6ft above the original Quay height and this level is maintained to within several feet of the Quay walls with box shaped concrete sections forming the sea defence. This will be the base level for all the eventual new build on site and complies with current regulations with regard to future flood protection. The original swing



bridge is probably one of the oldest complete structures of the type that has survived with most of its mechanism still extant, with the brick house that controlled the operation having now been refurbished and listed.

P Channon

### *Annotations*

- 1 Swing Bridge (listed)
- 2 New Road Bridge
- 3 Flood defence walls
- 4 New Industrial area (Old Power Station Site)
- 5 Former Wartime Fuel Additive works (Octel)
- 6 New raised road
- 7 Quay Stables (listed)
- 8 East Quay
- 9 Harbour Office
- 10 Hayle Gas Company

**With thanks to  
the Hayle  
Archive and  
Brian Sullivan.  
Aerial Images  
(including  
front cover)  
P Channon**

**Old cassette tapes  
and reel to reel tapes  
all onto CD**

Also old 78, 45, 33 rpm records

Save your precious memories  
from decay, damp & age.

All audio improved and edited

Your photos on the cover etc.

Phone me for all your recording needs.

**On 01209 719481**

**Email:cornmillstudio@aol.com**

# **PILATES**

**Beginners** class every  
Wednesday 6 - 7pm

**Intermediate** every  
Wednesday 7.10 - 8.10pm  
@ Hayle Community School

"In 10 sessions you'll feel the  
difference, in 20 you'll see the  
difference and in 30, you'll have a  
fitter and stronger body"

*Train with Cornwall's only  
Polestar Pilates UK instructor.*

To book a place please call  
**Emma on 07879 483106**  
[www.emmas-pilates.co.uk](http://www.emmas-pilates.co.uk)

# **CLIFFORDS**

**Plumbing & Heating**

**\*10% off boiler installations in  
October and November**

Local, Reliable, Clean and friendly service



**01736 755170**

**07761 938183**



**Fully Qualified, Gas safe Registered and Water Industry Approved**

[www.waterworkscornwall.co.uk](http://www.waterworkscornwall.co.uk)

\*Discount available upon production of this advert

## Regular Clubs Listings

**Hayle Old Cornwall Society.** First Friday of each month from October to May. Downstairs at Passmore Edwards Institute, 7.30pm. Tel. Maria Prosser on 01736 755072..

**Hayle Library Reading Group.** 2.00pm first Wednesday of each month. Free. Contact Hayle Library.

**Hayle Flower Club.** 4th Wednesday of the month, 7.30pm, Hayle Daycare Centre, in the conservatory. Tel. 01736 757028.

**Royal British Legion.** Top floor of Passmore Edwards Institute. Every Monday, Wednesday and Friday evening, and Saturday afternoon. Tel. 01736 758482.

**W.I. Hayle East.** 1st Tuesday of the month, 7.30pm, Philip Smith Annexe, Hayle Daycare Centre. Tel. 01736 753503.

**Praze Hayle Choir.** Every Tuesday, 7.30pm. Methodist Hall, Mount Pleasant. Tel. Don Metcalf 01736 757720.

**Hayle Meanderers.** Every Wednesday 10.30am Commercial Road car park, by Daycare Centre. Free, with contributions to car sharing. Tel. Joan Smith 01736 793631.

**Hayle Camera Club.** 3rd Tuesday of month 7.30pm at Passmore Edwards Institute, Hayle. Tel. 01736 753215.

**Hayle Twinning Association.** 2nd Monday of each month at Hayle Community Centre. 7.15pm in Room 7 Contact Mike Stuckey on 01736 753755 or e mail [mikestuckey@tiscali.co.uk](mailto:mikestuckey@tiscali.co.uk)

**Hayle in Bloom.** Last Monday of the month, except for Aug & Dec. Held at Hayle Rugby Club 7pm. [www.hayleinbloom.org.uk](http://www.hayleinbloom.org.uk) for details.

**Hayle Harbour Users Association.** First Monday of each month, 7.30pm, Royal Standard Pub. A friendly meeting for any private users of the Harbour. Contact Rob Lello on 01736 757632

**Hayle & District Lions Club.** 2nd and 4th Tuesday of every month, 7.30pm at Passmore Edwards Institute. Tel. Mel George 01736 756484

**Hayle and District Bowling Club.** 10am every Sunday. All welcome to try Lawn Bowls (weather permitting). Short Mat bowling indoors during winter months, ring for details. 01736 753565

**Hayle Samba Community Band.** Rehearsals every Tuesday 7:30 to 9:30pm Meeting Room to the rear of The Royal Standard, Hayle. Tel. Frank or Joy 01736 754976

**Hayle Rotary Club.** Meetings each Monday evening, except Bank Holidays, at the White Hart Hotel, Hayle 7.00p.m. For details tel. Trevor Osborne 01736 793596

**Hayle Judo Kwai.** Meeting at The Downes, Foundry Hill, Hayle. Tues (5-9yrs) 6.00-6.50pm Beginners and Primaries. 7.00-8.00pm Primaries Thurs(10-15) 6.30-7.30pm (16 and over)7.30-9.00pm. Information from: Sensei Richard 01736740723 or Jeni Matthews, club secretary 07748133362.

**Hayle Monday Club.** Every Monday (except Bank Holidays) 2.00 – 3.30pm at Phillack Church Hall. Contact May Burgess 01736 756390.

**Heyl Town Band.** Rehearsals Tuesdays & Thursdays 7:30pm - 9:30pm Junior band rehearsals Thursdays 6:pm - 7:00pm Contact: John Whear secretary 01736 754804 or john.whear@talktalk.net

**Hayle Line Dancing Club.** Every Monday at Hayle Methodist Church 7.30 – 9.30pm. Adults £3, Children £1 (includes light refreshment). Car parking available. Tel 01736 752610.

**Hayle Pilot Gig Rowing Club.** Rowing out of Hayle harbour most Tuesdays and Thursday evenings during the summer with weekend competitions, training and 'have-a-go' sessions too. Novices to serious competitors catered for! To find out more please contact the club via the website [www.haylegigclub.com](http://www.haylegigclub.com) Hayle

**Model Boat Club.** Wednesday evenings 7-9pm & Sunday mornings 10-12 noon, meeting at green chalet by Hayle outdoor swimming pool. Tel: 01736 755516, or Les on 01736 754254

**Save Our Sand.** 2nd Tuesday of each month, 7.30pm at the Passmore Edwards Institute. Hayle

**Table Tennis for Fun,** every Friday at 2pm at Hayle Methodist Church Hall, Chapel Hill, Hayle. Come and play, have fun and some gentle exercise. Only £2 per session. Bats, balls and squash provided. Free car parking. Tel. Yvonne Bates 01736 756545

**Hayle Local Vocalz.** A lively 60 strong mixed voice adult choir. Monday evenings 8pm, Passmore Edwards Institute, Hayle. Website: [www.localvocalz.co.uk](http://www.localvocalz.co.uk) Contact: Neil Shepherd 01736 759944

**St Ives and Hayle Community Choir.** Tuesdays, 2pm St Anta Church Hall, Carbis Bay. Website: [www.cornwallcommunitychoir.co.uk](http://www.cornwallcommunitychoir.co.uk) Bathroom, golf course and experienced singers welcome! Contact: Neil Shepherd 01736 759944

**Heyl St. Piran singers.** Every Thursday at Hayle Methodist Church Hall at 7.30 to 9.30pm. For details tel. Ann Birch 01736 752335

*To appear on this page, free of charge, please send us details of your club/event, the time, dates and meeting place along with a contact phone number.*

## MUSIC LESSONS

Piano, keyboard, organ, singing  
and theory of music

♪ Beginners to diploma level

♪ Adults and children

♪ Examinations or fun!

♪ No group tuition whatsoever  
— strictly "one to one" basis

NEIL SHEPHERD

**Details 01736 759944**

[www.neilshepherd.org.uk](http://www.neilshepherd.org.uk)

## Do you enjoy singing? LOCAL VOCALZ!

A lively adult choir for the  
West Cornwall area, singing a  
wide range of music.

Mondays, 8.00 pm to 9.30 pm at  
Passmore Edwards Institute, Hayle  
why not come along to a  
rehearsal?

£3.00 per session  
Music reading desirable but not  
essential - we'll teach you!

**Details 01736 759944**

[www.localvocalz.co.uk](http://www.localvocalz.co.uk)

## TJ'S CARPETS LTD.



**New Showroom at Tolroy Garage,  
58 Mellanear Road, Hayle TR27 6HF**

Come and see our wide selection of carpets & vinyls,  
laminates and patterns

**Our famous home selection service still available**

Full range of flooring accessories

**Call Now! 01736 757540 or 07976 608215**

Free measuring & estimate service

**"Before You Buy, Give Us A Try"**

## St Joseph's Convent School

At the back of St Michael's Hospital is to be found a little L-shaped lane, sloping gently, with a high wall on one side. If, in the 1950s, you were to wander down this lane, at the end you would find a grassy enclosure, bordered on two sides by fields and overlooking Hayle Causeway, and, standing at right angles to one another with a tarmac playground in between, two small buildings...a pink-washed cob cottage and a long blue wooden hut.

This little enclave was St Joseph's Convent School, founded by the Daughters of the

Cross, the Order of nuns who arrived in Hayle in 1902, turned Downs House, given to them by their benefactress, Miss Ellis, into a convent, and twelve years later through their efforts at fund raising, created and ran St Michael's Hospital. They established the school in 1932, to meet the needs of a sudden influx of Catholic children to Hayle, using a former gardener's cottage and a wooden hut moved from the Downs garden as classrooms. The school went on to accept children of all denominations. The pink cottage was the classroom of 'the Little Ones,' children from five to eight years old, while the blue hut housed 'the Big Ones.' These pupils



# threads

haberdashery & workshops

**Craft & sewing workshops for all abilities.**

**Quality cotton fabrics and flannels, lovely buttons,  
ribbons and yarns.**

Come and learn a new skill, take home a finished handmade project.

Foundry Farm, Hayle, TR27 4HD (opposite Jewsons)

tel: 07793608274 email: [info@threadscornwall.co.uk](mailto:info@threadscornwall.co.uk)

[www.threadscornwall.co.uk](http://www.threadscornwall.co.uk)

were aged from eight to eleven years, but here there was a difference, as the Convent only taught boys up to the age of eight, so this class was girls only.

The setting was idyllic and the two nuns who taught, Sister Mary Rita and Sister Josephine Mary, kind disciplinarians, not above tucking up voluminous black skirts to run as fast as the children in games of rounders.

At lunchtime the children walked up to the Downs dining hall, in summer usually a sunlit ramble, but winter walks could be very different, and they often arrived back from lunch wet and cold. The only source of heat in the blue

wooden hut was a small cast iron stove, frequently the building was so cold that children wore coats and gloves throughout the day.

St Joseph's eventually closed in 1969. In spite of the sometimes Spartan conditions, the school provided a wonderful grounding, not only academically, but also morally. Many girls went on to pass the eleven plus, and pupils must have been shaped by the goodness and integrity of their teachers, and also the beauty of the surroundings.

Kath Mullinger

## SATORI HEALING

3 Foundry Farm, Foundry Lane, Hayle, TR27 4DW (opposite Jewsons)  
Tel: 01736 448696 or 07748 032907 \* email: mariacliftondey@hotmail.co.uk  
Find Satori Healing on Facebook for workshop dates and latest Reiki news

### Satori Healing offers:

Healing treatments by appointment \* Monthly Reiki training workshops  
Reiki Training levels 1,2, Advanced Reiki Training, Master training  
and Karuna Reiki \* one2one and small group training can be arranged  
Distant healing offered by donation only \* Reiki share nights  
House/workplace energy clearing

Reiki Healing can help any Physical and/or Emotional problem -  
often freeing people from a lifetime of pain and anguish in just a few sessions.  
It is my intention to help people live their life to the full, free from restriction and fear.

**25% off 1st appointment**

Gift Vouchers also available - What better gift than the gift of healing?

SATORI HEALING - ENERGY FOR LIFE!

## Hayle Oral History Project Update

Thanks to those that bought our book Churks, Clidgy & Doodle-Dashers, Hayle Tales and Trails this Christmas. This helps to keep the Archive and Brewery Office open. So what's happening with Hayle Oral History Project (HOHP)? Our funding ended this time last year but we're still recording memories voluntarily (Lynne especially, thank you!) so let us know if you want to record yours! Anymore stories from the Dynamite Works

I am still attempting to be the volunteer coordinator but I'm now a PhD student at University College Falmouth. Hurrah - my research is based in Hayle! I'm creating audio

or multi-media experiences that are triggered by GPS when you move around the Hayle area with a smart phone – you might hear some memories, music, sound effects and stories to help bring the Hayle landscape and its history/culture back to life. So, if you have any documents, photos, old songs – whatever - please bring them in to the Brewery Office or contact me. We're also desperate for archive film from the Hayle Area, on super 8, DVD, BETA, video... anything, as we're trying to get funding to make short films using local archive film material. As well as history about people I'm also interested in the Hayle environment, how the estuary has changed. For example Hayle Archive has some amazing new pictures from when the Towans

# St Erth & Hayle Cars

4 - 7 - 8 Seat Vehicles

Wheel Chair Accessible Vehicle

8 Seat Party Buses!

Polite, Friendly Staff



Airport Transfers, Local Trips, Nights Out  
Trips to Doctors + Much More!

**01736 75 40 40 or 0770 60 40 400**

[www.sterthandhaylecars.co.uk](http://www.sterthandhaylecars.co.uk)

# THE FARM SHOP

31 Penpol Terrace, Hayle  
TR27 4BQ

**OPEN - 6 DAYS A WEEK**  
**8 AM - 5 PM**

## FOR ALL YOUR LOCAL PRODUCE

Fruit, vegetables, plants and  
flowers, free range eggs,  
Cornish potatoes.

### NOW IN

Spring bedding.  
Spring flowers for  
Valentine's and Mother's Day.

collapsed in 1978 taking some chalets with them!

One of our longest-serving volunteers, Andy Nephin, studies sound engineering at Truro College. He's building a website contrasting new and old pictures and memories of Hayle and, of course, is using some of the HOHP memories. So are our friends at Cornish Mining World Heritage who are creating MP3 audio walks around Hayle with our recordings as part of the World Heritage Site 'Discover the Extraordinary' project - so get ready to enjoy those. Thank you for your support, yours Lucy hayle.history@btconnect.com tel: 01736 753962 <http://hayletaleshome.blogspot.com>

## A Very Belated Happy New Year from everyone at Hayle Library

The last few months have seen been very busy in your local library with lots of changes hence we have missed inserting an article in The Hayle pump for a couple of editions.

Sue and Sally have both now moved on as I am sure everyone knows. They have asked me to pass on their best wishes and hope everyone enjoyed their little soiree in November on their last day.

However, we are very fortunate to have a great replacement in Emma. I am sure you will all join

## The Gallery Coffee Bar

Warm & Welcoming  
With Indoor & Outdoor Seating

- ☼ Lavazza Coffee
- ☼ Teapig Teas - Herbal Infusions
- ☼ Luxury Hot Chocolate
- ☼ Hot Homemade Soups
- ☼ Warm Bacon rolls sold all day
- ☼ Delicious Homemade Cakes  
& Cheesecakes
- ☼ Toasted Teacakes
- ☼ Shmoo Milkshakes  
& Toppings
- ☼ All available for  
take away



1 Chapel Terrace, Hayle  
01736 756829  
Dogs Welcome

the staff in wishing Emma every success in her new role

The actual everyday running of the Library has changed very little with the same opening hours and groups meeting.

Our Children's Story Time still runs on a Tuesday afternoon between 3.45 and 4.45. All you young people come along and join in the fun with Abi.

The Reading Group continue to meet on the first Wednesday of the month and new members are always welcome.

The ever popular Hayle Writing Group still meet every other Thursday from 10.00 – 12.00 so if you have an interest in creative writing come and join this lively band of people – no previous experience necessary!!

Please continue to support your local library and as always, we welcome your comments and thoughts on how we can improve our service to you.

We look forward to seeing you all again very soon.

Julie Holden



**FIRST DEFENCE  
HAYLE  
TAE KWON DO**

At St Elwyns Church Hall  
Every Monday and  
Wednesday

Ages 6-12 5.30  
12 upwards 7.30

Contact 07887 773949

www.firstdefenceblackbeltschools.co.uk

Get 2 lessons  
FREE and get  
2 months FREE  
training when  
joining



## Heyl St Piran Singers

Since the last edition of the pump we have taken part in the Camborne Music Festival, where we came joint second in our class. We performed two very successful Christmas concerts as described in the Praze Hayle Male Choir article. To

round off our year the choir had a very successful, happy and enjoyable evening at Country Skittles where we had a most enjoyable meal, followed by several noisy and competitive games of skittles

We are now looking forward to 2012, to learning new music and revisiting old favourites. This ladies choir is a very friendly and supportive choir, so if you enjoy singing what could be nicer than to join a group of like minded ladies every Thursday evening? We rehearse in the Hayle Methodist Church Hall from 7.30 to 9.30. We have a wide ranging repertoire to suit every taste, so if you would like more information why not contact our musical director, Ann on 01736 752335, or our secretary Geraldine, on 01736 755162.

# BARTON print

Tel: 07799 411525  
Fax: 01736 757022

## Quick Reliable General Printing Service

JUST A SMALL SELECTION OF THE SERVICES WE OFFER!

- BUSINESS CARDS
- COMPLIMENT SLIPS
- NCR PADS / SETS
- LEAFLETS
- MENUS
- NEWSLETTERS
- ENVELOPES
- LARGE FORMAT PRINTS
- LETTERHEADS
- OVERPRINTING

- RAFFLE TICKETS
- B/W COLOUR COPYING

COMPETITIVELY PRICED

1 Turnpike Road, Connor Downs

Telephone 07799 411525 01736 754220



**NORTH WARD**  
John Pollard  
[www.djpollard.co.uk](http://www.djpollard.co.uk)  
**07967 272808**

## CORNWALL COUNCILLORS FOR HAYLE

Contact us directly or through the Hayle One Stop Shop where we hold surgeries on the first Saturday of each month  
**0300 1234 100**

## SOUTH WARD

John Coombe

**01736 752831**



## Hayle and District Lions

We would like to take this opportunity to thank all the people of Hayle for supporting us throughout 2011, helping us raise funds which have been used to help many individuals, groups and local projects in Hayle.

December was a particularly busy month for us, firstly, helping Santa in

his Grotto at Pratts Market.

Our thanks go to the Market Traders for all their help and support with this venture.

We would also like to thank Lidl Supermarket, The Co-op and Hayle Retail

Park for letting us fundraise with Santa in their Car-parks.

Our Christmas Concert was a great success and enjoyed by everyone that attended. It raised £500 for St Julia's Hospice.

Santa's Sleigh Tour of the Hayle streets had to be cut back to 2 evenings, due to the adverse weather conditions. We are really sorry if you were looking forward to seeing Santa - but we'll be back in December 2012. This year we will be holding a total of 5 Male Voice Choir Concerts, beginning on Sunday 26th February in St Elwyn's Church, Hayle at 7.30pm

featuring The Treverva Male Voice Choir. Further dates as follows:

Sunday 25th March - Mousehole Male Voice Choir

Sunday 29th April - Holman/Climax Male Voice Choir

Sunday 27th May - St Stythians Male Voice Choir

Sunday 24th June - Four Lanes Male Voice Choir

We look forward to seeing you there. The admission price is £5 with free tea/coffee and biscuits at the end of the concert.

We will be working with Hayle Rotary in the coming months and are

busy planning a Late Spring Show to be held on 5th May. It will feature a Children's Pet Show, Motor Bike show and Parade, Stalls, Raffle and Teas etc....

All money raised at this event is to go to "The Phoenix Stroke Appeal" so

look out for more information in the coming months.

All the Members of Hayle Lions Club would like to take this opportunity to wish everyone "Best Wishes in 2012"

If you are looking for something to do, and make good friends why not come along to one of our meetings, which are held every 2nd and 4th Tuesday evening of the month at 7.30pm in The Passmore Edwards Institute, Hayle or ring Mel for more information on 01736 756484.

Thank you once again for your support, **Maureen George** - (Club Secretary).



**MOUNTAIN - ROAD - BMX SPECIALIST**

**Bicycle Sales and Repairs**

**Tel: 01736 753825**

36 Penpol Terrace, Hayle TR27 4BQ  
[www.haylecycles.com](http://www.haylecycles.com)

I tried to get tickets to see an Elvis tribute band, but when I phoned the message said press 1 for the money 2 for the show...

---

## **Bodriggy Academy**

The children of Bodriggy Academy choir had a very busy time over Christmas. As well as singing in the school's own Carol Concert, choir members performed at the turning on of Hayle's Christmas Lights, at the Churches Together Service at St. Elwyns and the Christingle Service at the same venue.

In addition, a smaller group of children from the choir sang at St. Michael's Hospital in several wards and at The Downes Care Home.

The dedicated choir, who last year were the best Junior Choir at the Cornwall Music Festival, practice twice weekly in school time under the expert guidance

of musical director, teacher Mrs. Gerry Blythe. Cornwall Music Service teacher, Sarah Hanley, contributes greatly with her skills on the piano. The Academy appreciates how much time Sarah gives up to help the children.

Currently, children are practising hard for this year's Cornwall Music Festival in March. After this, there will be no time to rest as the choir will join the rest of the 300 children in school performing "Oliver" in the Summer term.

Bodriggy Academy choir are keen to further support the community and will consider any requests to perform.

# Councillor Addresses

## South Ward

**BENNETT**, John (Mayor)  
18 Riviere Towans, Hayle, TR275AF  
01736 753184  
[john.bennett@hayletowncouncil.net](mailto:john.bennett@hayletowncouncil.net)

**BIRCH**, Paul  
10 The Pathway Fields, Hayle,  
TR27 4BE  
[paul.birch@hayletowncouncil.net](mailto:paul.birch@hayletowncouncil.net)

**HEAD**, Chris  
Inverewe, Penpol Avenue, Hayle,  
TR27 4NQ tel 01736 759317  
[chris.head@hayletowncouncil.net](mailto:chris.head@hayletowncouncil.net)

**HEAD**, Mrs Jacqui  
Inverewe, Penpol Avenue, Hayle,  
TR27 4NQ tel 01736 759317  
[jacqui.head@hayletowncouncil.net](mailto:jacqui.head@hayletowncouncil.net)

**HORWELL**, Richard  
5 Dracaena Avenue, Copperhouse,  
Hayle, TR27 4LZ tel 01736 752597  
[richard.horwell@hayletowncouncil.net](mailto:richard.horwell@hayletowncouncil.net)

**NINNES**, Mrs Jayne (Deputy Mayor)  
30 Ash Drive, Hayle, TR27 6PF  
01736 753336  
[jayne.ninnes@hayletowncouncil.net](mailto:jayne.ninnes@hayletowncouncil.net)

## East Ward

**RANCE**, Anne Marie  
27 The Pathway Fields, Hayle, TR27 4BE  
01736 754787  
[anne-marie.rance@hayletowncouncil.net](mailto:anne-marie.rance@hayletowncouncil.net)

**LELLO**, Robb  
29 Treeve Lane, Hayle, TR27 5DQ  
01736 757507  
[robb.lello@hayletowncouncil.net](mailto:robb.lello@hayletowncouncil.net)

**[www.kleeneze-hayle.co.uk](http://www.kleeneze-hayle.co.uk)**

All your favourite hard to  
find Homecare Health products  
and quirky gadgets

## NOW ONLINE

This 88 year old British catalogue  
company has joined the Web!  
Order online but still receive the  
friendly free delivery and pay on arrival  
service from your local distributors

*All online orders will receive a  
FREE Mystery product sample!*

See you soon Nick & Jan Pincott

## PAUL SHERRIS

Hayle's only local family  
owned  
FUNERAL DIRECTOR

Private Chapel of Rest  
Pre-Payment Plans available

West Terrace, Hayle.  
TR27 4JS.

01736 753969.  
Day or night.

# Councillor Addresses

## North Ward

**BLAKELEY, Harry**  
7 Bodriggy Villas, Hayle, TR27 4PG  
01736 757428  
[harry.blakeley@hayletowncouncil.net](mailto:harry.blakeley@hayletowncouncil.net)

**CAPPER, Brian**  
Sweetlarks, 25 Riverside,  
Angarrack, Hayle, TR27 5JD  
01736 753838  
[brian.capper@hayletowncouncil.net](mailto:brian.capper@hayletowncouncil.net)

**COAD, Graham**  
4 Springfield Close, Phillack, Hayle,  
TR27 5AH  
01736 756367  
[graham.coad@hayletowncouncil.net](mailto:graham.coad@hayletowncouncil.net)

**COOMBE, John**  
4 Commercial Road, Hayle, TR27 4DG  
01736 752831  
[john.coombe@hayletowncouncil.net](mailto:john.coombe@hayletowncouncil.net)

**FARRAR, Nick**  
8 Marsh Lane, Hayle, TR27 4PS  
01736 757818  
[nick.farrar@hayletowncouncil.net](mailto:nick.farrar@hayletowncouncil.net)

**POLKINGHORNE, Clive**  
42 Hayle Terrace, Hayle, TR27 4BT  
01736 753020  
[clive.polkinghorne@hayletowncouncil.net](mailto:clive.polkinghorne@hayletowncouncil.net)

**POLLARD, John**  
5 Beramic Close, Connor Downs, Hayle,  
TR27 5DP  
01736 752364  
[john.pollard@hayletowncouncil.net](mailto:john.pollard@hayletowncouncil.net)

# Cornwall Oven Cleaning

"Professional eco-friendly oven cleaning"

- Highest level of oven cleaning
- Makes no mess in your home
- Removes stubborn and burnt in grease & carbon
- Eco-Friendly, Non-Toxic cleaning products
- Affordable, competitive pricing

**£10 Off**  
All oven cleans  
Quote: Pump

We love oven cleaning and take great pride in bringing ovens back to their former glory! We will provide our oven cleaning services at a time to fit around our customers lifestyles and will always be courteous, reliable and hassle free.

**[www.cornwallovencleaning.com](http://www.cornwallovencleaning.com)**  
Call: **0800 566 8804** or **01326 710107**

## Nature Quiz by *Cleverclogs*

1. What is the largest cat that purrs?
2. How many wings on a dragonfly?
3. Oil of Bergamot is added to Earl Grey tea – what is Bergamot?
4. What is a Bombay Duck?
5. The Heron, one of Britain's largest birds, weighs how much . . .  
(a) up to 3 lbs (b) up to 7 lbs (c) up to 10 lbs (d) no more than 14 lbs?
6. Which seals are based in Cornwall – grey seals or common seals?
7. What colour light is emitted by slow worms?
8. What are the three main colours on a magpie moth?
9. How many legs are there on the common centipede?
10. What colour flower does ground ivy have?
11. Birdsfoot Trefoil has a very common name due to the colour of its flowers. What is that name?
12. Rowan berries make a very good jelly. What is another name for the Rowan tree?

### **Answers to Penny quiz from issue 100**

1. 30
2. Ceps
3. Amusement centre with slot machines
4. A low-class theatre
5. Because it had a slot in it to hold a coin (for emergencies I presume)
6. Shares that trade for less than £1
7. Pennyroyal

## Please Note

The Hayle Pump accepts no responsibility for goods or services offered by its advertisers

*To win a prize voucher worth £20 to be spent with any of our advertisers, send your answers along with your contact details to: [editor@haylepump.org.uk](mailto:editor@haylepump.org.uk) or, alternatively, one of the Hayle Pump drop-off points listed inside the front cover. The winner will be drawn at random from all correct entries received on 20<sup>th</sup> of March 2012.*

*Advertisers please note that the prize for the quiz is a voucher worth £20 to be spent with any of our advertisers in the Hayle Pump Newsletter.*

8. Bronze
9. Denarius (see explanation Chambers Dictionary 11th edition p 142)
10. Six (hence six notes)
11. 24 grains or 1/20th of an ounce

The winner of the £20 prize voucher was Mrs H Hammond of Hayle; congratulations!

# HAYLE Pages

- 39** Barton Print 01736 754220  
**23 Bigglestons 01736 752219**  
**25** Biz and Bytes 01736 755971  
**8** Blewetts Toy Shop 01736 753012  
**8** Bush Monkey 07899 910217  
**26** Calvin Goodwin Decorator 01736 755639  
**15 Central Garage 01736 755885**  
**30** Cliffords Plumbing 01736 755170  
**30** Cornmill Studio 01209 719481  
**8** Cornwall Chiropractic Clinic 01736 759088  
**39** Cornwall Council 0300 1234 100  
**43** Cornwall Oven Cleaning 0800 566 8804  
**3** CSpray 01736 756077  
**8** David N'jje Decorator 07944 156995  
**4** Des Button Electrical 01736 753211  
**26** Do It For You 01736 757185  
**30** Emma's Pilates 01736 75  
**17** Fernleigh Guest House 01736 752166  
**38** First Defence Tae Kwon Do 07887 773949  
**2 Flowertime 01736 757006**  
**21** Fresh Café 01736 756222  
**16** Graham Smith, Guitar Tutor 01736 740141  
**27** Guitar Tuition 01736 753709  
**41** Hayle Cycles 01736 753825  
**27 Hayle Day Care Centre 01736 755000**  
**13** Hayle Film Club 01736 753184  
**11** JC Electrical 01736 754543  
**12** JSH Deodorising Services 01736 753520  
**25 Keast Opticians 01736 7531456 The Sleepy Hollow 07747 078274**  
**34** Threads Haberdashery 07793 608274  
**33** TJ's Carpets 01736 757540
- 21** PDH Builders & Roofing 01736 719469  
**BP** Penpol Garage 01736 757011
- 42** Kleeneze 01736 75  
**14** Lawrence Butcher Chimney Sweep 01736 850033  
**7** Lindsay's Dog Grooming 01736 753864  
**33** Local Vocalz 01736 759944  
**7** Millpond View Care Home 01736 752759  
**33** Neil Shepherd Music teacher 01736 759944  
**6** Nick Farrar Windows 01736 757818  
**15** Paradise Park 01736 751020  
**25** Passmore Edwards Institute 01736 756055  
**42** Paul Sherris Funeral services 01736 753969  
**11** Pawfection Dog Grooming 01736 851357  
**6** PG Franklin Handyman 01736 757360  
**3** Plantech 01736 754401  
**22** Public Image Hair Salon 01736 752999  
**18** Rick Harvey Handyman 01736 752811  
**35** Satori Emporium 01736 75  
**10** Shelley's Emporium 01736 756808  
**18** Solar Roofing Services 01209 832182  
**20** Star the Dancer 07808 917683  
**36** St Erth & Hayle Cars 01736 754040  
**17** Tee Cee Tech 01736 850798  
**23** The Bean Belt 01736 752550  
**4** The Cornwall Property Letting Ag 01736 741108  
**37 The Farm Shop – Penpol Terrace**  
**37** The Gallery Coffee Bar 01736 756829  
**6** The Sleepy Hollow 07747 078274  
**34** Threads Haberdashery 07793 608274  
**33** TJ's Carpets 01736 757540  
**5** Webb & Philp Electricians 01736 753651

---

*You can pick up your FREE copy of the Hayle Pump Newsletter at any of those advertisers listed above in bold. You can also get a copy from any of the other regular pick up points: Hayle Library, Hayle Community Centre, Bodriggy Health Centre, Wyevale Garden Centre and the following Post Offices at Copperhouse, Martins and Connor Downs. You can now also view current and past copies of the Hayle Pump online at our website*  
[www.haylepump.org.uk](http://www.haylepump.org.uk)

# **Penpol Garage**

## **Your 'main dealer' alternative...**

*Established over 20 years we have grown from strength to strength by word of mouth referrals due to the quality of our work and service.*

*We provide vehicle maintenance, repairs and diagnostics for all makes of vehicles and have invested in training and state of the art diagnostic equipment including scan tools, programming tools and oscilloscopes to meet the demands of the modern vehicle.*

### **Would you like to get better MPG and improved performance?**

*We can now offer an engine re-mapping service using our latest equipment via your car's OBD port.*

*This can dramatically improve your vehicle's performance and economy.*

### **Special Offer: FREE diagnostic check-up with every Engine Re-map.**

*Ask us today for more info. Special offer for 2 months only.*

*It is our policy to keep our customers informed at all times, the fault, cause, cure and estimated cost will be reported to the customer before we carry out any repair work.*

*We recognise that it is important to use Original Equipment (OE) parts and the manufacturer's recommended engine lubricants to prevent premature engine damage, and this is our standard practice.*

*Personal Attention and Professional Service*

**ebeepbeep.com**  
car servicing for less 

**Telephone: 01736 - 757011**

**Mobile: 07921 218448**

**17A Penpol Terrace, Hayle, TR27 4BQ**

**email: [hrcmulley@talktalk.net](mailto:hrcmulley@talktalk.net)**



**MOST MAJOR CARDS ACCEPTED**