

# HAYLE PUMP NEWSLETTER

**FREE COPY, please take one**

Hayle's World Heritage Status.



Issue 104

Circulation 2,500, made possible thanks to our advertisers

# Hayle Pump Newsletter

Passmore Edwards Institute  
13-15 Hayle Terrace, Hayle, TR27 4BU  
[www.haylepump.org.uk](http://www.haylepump.org.uk)

## Editor

Graham Coad  
[editor@haylepump.org.uk](mailto:editor@haylepump.org.uk)

## Desk Top Publishing

Luca Angius/John Bennett  
[ntp@haylepump.org.uk](mailto:ntp@haylepump.org.uk)

## Treasurer

John Jansen  
[treasurer@haylepump.org.uk](mailto:treasurer@haylepump.org.uk)

## Advertising

Anne-Marie Rance  
[ads@haylepump.org.uk](mailto:ads@haylepump.org.uk)

## Secretary

Shirley Thompson

## Web Site

John Bennett  
[webmaster@haylepump.org.uk](mailto:webmaster@haylepump.org.uk)

## Team Members

Ray Wyse, Peter Channon  
Sarah Turk, Jeff Turk

## Subscriptions & Web

The Hayle Pump can be viewed and downloaded online at:

[www.haylepump.org.uk](http://www.haylepump.org.uk)

For 6 issues by mail, please send a cheque or postal order for £3.50 made payable to **Hayle Pump Newsletter** to:

### HAYLE PUMP SUBSCRIPTIONS

35 Penpol Terrace, HAYLE TR27 4BQ.

**Please state delivery name & address**

### Code of submission


The Hayle Pump would like to remind readers that all material accepted as points of view are not necessarily the opinion of the Editorial Team.

**Items received should be a maximum of 400 words and may be edited or omitted due to limitations on space.**

News, letters, notices etc. must be emailed to [editor@haylepump.org.uk](mailto:editor@haylepump.org.uk) or dropped off at **Bigglestons** or the **Passmore Edwards Institute**

**The decision of the Editorial Team is final**

### Join our team

We always need help of all kinds and you are most welcome to join us. Contact the editor for more details. We especially need help with desktop publishing – training will be given. 

**Closing date for copy is 20 September**

## Display Sizes and Advertising Rates

Page	Size (mm)	Price
Full	190 x 130	£90.00
1/2	130 x 95	£30.00
1/4	63 x 95	£15.00
1/8	63 x 42	£10.00

**Advertising Deadline**  
**13<sup>th</sup> of prior month**

**Please visit our website for more information, guidelines for artwork submission of adverts and important notes to advertisers.**

[www.haylepump.org.uk](http://www.haylepump.org.uk)

## *Editorial*

# Hello and welcome to the August/September issue of The Pump.

The Queen's Jubilee has come and gone with a great party on the Memorial Walk, ending with a fine firework display, well done everyone involved!

By now the 2012 London Olympics should be in full swing, with the closing ceremony due on August 12<sup>th</sup>. As I write we are in scandal time over the security, so let's hope that it all gets sorted and that the Olympics go well!

Due to our errant "Jet Stream" the weather up until the third week of July had been atrocious, cold and wet, but we are reliably informed that the Jet stream has gone to where it should be and we are due for proper August and September weather.

Hayle Swimming pool is open and needs a good summer with plenty of paying customers to have a chance of staying open next year. (It has a Facebook Page :

[www.facebook.com/hayleswimmingpool](http://www.facebook.com/hayleswimmingpool)

In a similar vein, Hayle Town Council has authorised its working group to continue investigating a Community Sports and Leisure facility for everyone, sited beside Hayle Community School.

[www.facebook.com/sportshallforhayle](http://www.facebook.com/sportshallforhayle)  
The infrastructure work, repairs and

bridge on North Quay comes due for completion by the end of October 2012, including repair to East Quay, and work on the repair and development of South Quay is likely to start in spring next year, so there will still be plenty going on for us to see!

Apologies to Georgina Schofield and her regular readers that her articles did not appear in the last Pump, here this time!

Hayle is looking and getting better all the time, with new businesses and investment, repairs, redecorations and OPTIMISM. Keep it up everyone!

Graham. (Editor)



**Baths and Kitchens**

**Bath Resurfacing  
and Repairs**

---

**Pressure washing  
Domestic and Commercial**

Patios ● Driveways ● Paving  
● Decking ● Walls

- no area too small -

**Contact for details:  
01736 756077**

**Des Button**

**SPRINGFIELD  
33 Clifton Terrace  
Hayle TR27 4BP**

**ELECTRICAL  
SERVICES &  
SUPPLIES**

**01736 753211**



**PART P  
REGISTERED**



## ***WORLD HERITAGE SCULPTURE***

To celebrate Hayle's status as a World Heritage Site, Terry English has designed and made a model of a Cornish Beam Engine, a tribute to Hayle's worldwide contribution to mining in places like South Africa, Australia and South America, which would never have happened without the expertise of our engineering past. It is installed as part of a floral display in the gardens and walk opposite Penpol Terrace.

Terry is a master in design and fabrication in metal and is accepted as the finest armourer in the world. His credits in film run from The Lion In Winter, Excalibur to (more

recently), Snow White and the Huntsman, and Harry Potter. He has also done numerous commercials, many of which you see nightly on television.

The display is the combined idea and efforts of Michael Kemp (Hayle's exceptional hard working Council gardener) Ingrid Kemp, (Hayle in Bloom secretary), and Ann Marie Rance, assistant gardener and town councillor.

Terry passed on the fee paid by Hayle in Bloom to a charity of The Cornishman newspaper's choice.

Locals and visitors alike have been admiring the display, and hopefully will recognize Hayle's great part in the world's search for minerals and riches to improve and advance the fortunes of all.

Jeff Turk.



**David N'jie**  
PAINTER & DECORATOR

 07944 156995  01209 831397

dn-jiepainter-decorator@hotmail.com  
Trethannas Cottage, Praze-an-Beeble  
Camborne TR14 0LH



## ***BODRIGGY HEALTH CENTRE***

**Patient** Participation Groups work with their practices to provide

practical support to help patients to take more responsibility for their own health and to provide strategic input and advice. They are based on cooperation between the practice staff and patients, and help to improve communication.

Membership of the group is open to all patients of the practice over 16. The aims of the group are to help: improve communication between patients and staff of the practice, suggest ways for improvement within the practice and day-to-day running, promote health education to the patients where appropriate, and to promote local support groups raise funds to enable the group to be self-sufficient.

If you are interested in becoming a member, please feel free to come along to our next meeting at **Bodriggy Health Centre on: Thursday 13th September at 7:00pm**

.Dominique Dell  
Secretary

\*\*\*\*\*

*My friend said he would give me £100 if I did a bungee jump.*

*I wasn't falling for that!*

\*\*\*\*\*

## **CHARITY TATTOO**

**Hayle man** Richard Barber, has had his military regiment's logo tattooed on his stomach, raising more than £700 for The Rifles Benevolent Trust's Care for



---

NEW Pineapple Range  
SPECIAL OFFER  
Purchase Pinapple frames  
and receive a beautiful  
mirror compact free

Designer Frames  
up to 33% discount

Varifocals  
from £119 complete

Prescription sun glasses  
from £59.90

Rimless Spectacles  
with 2 year anti-breakage  
warranty on lenses  
from £165 complete

Photochromic Promotions  
on Transitions/Kodak and  
Rodenstock lenses

---

**HAYLE**  
18 Commercial Road  
TR27 4DG  
01736 753145

**PENZANCE**  
21 Alverton Place  
TR18 2QP  
01736 366106

Casualties appeal.

He spent five hours in the tattooist's chair to raise funds for wounded soldiers. He has previously raised £400 for Help for Heroes, by having a bear dressed as a soldier tattooed on his torso. He is a member of The 6th Battalion The Rifles (6 RIFLES), based in Truro.

"Front-line soldiers can suffer traumatic injuries and they and their families need help and support. I



have relatives and friends who are serving in Helmand province in Afghanistan," said Mr Barber.

Mr Barber, who works at Matthew



**MOUNTAIN - ROAD - BMX SPECIALIST**

**Bicycle Sales and Repairs**

**Tel: 01736 753825**

36 Penpol Terrace, Hayle TR27 4BQ  
[www.haylecycles.com](http://www.haylecycles.com)

Stevens and Son fisheries in St Ives, said he was looking forward to front-line operations "I would love to do the tour, for a lot of reasons. I wouldn't like to say goodbye to my wife and children but it's what we're trained to do and there is regular contact with people at home."

To support his fund-raising you can donate online at

[www.justgiving.com/richard/barber.2](http://www.justgiving.com/richard/barber.2)

**HAYLE'S  
NEW  
COMMUNITY  
CINEMA  
BEGINS  
FIRST  
SEASON**



**Thanks** to support from Hayle Town Council and Carn to Cove, the new **Hayle Film Club** will begin its first-ever season in September, with a screening on the second Saturday of

each month. The autumn programme, selected by the committee, is as follows:

**8 September -**

**"THE AWAKENING"** UK thriller-horror, directed by Nick Murphy, starring Rebecca Hall, Dominic West, Imelda Staunton. 107 min. Rated 15.

**13 October -**

**"MOONRISE KINGDOM"** US comedy, directed by Wes Anderson, starring Bruce Willis, Tilda Swinton, Bill Murray. 94 min. 12A

**10 November -**

**"MAO'S LAST DANCER"**

Australian biography-drama, directed by Bruce Beresford, starring Bruce Greenwood. 117 min. 12A

**8 December -**

**"RED DOG"** Australian family-comedy-drama, directed by Kriv Stenders, written by Louis de Bernières, starring Josh Lucas, Noah Taylor, Keisha Castle-Hughes. 92 min. PG

Screenings begin at 7.30pm in the **Passmore Edwards Institute**, followed by refreshments. Tickets £5 per person, (£4 members, membership £5 for the first year), Available from 1st August via the club's website, [www.haylefilmclub.org.uk](http://www.haylefilmclub.org.uk).

After 15th August, tickets will be on sale at Biggleston's, Penpol Terrace, or by calling Sarah Turk on **01736**

**752319**. Seats are limited (tickets sold on the night will be subject to

## CLEANER CARPETS Cornwall



- ✓ free quotes
- ✓ no hidden charges
- ✓ non toxic

- Covering Lands End to Truro
- Over 10 years experience
- Fast friendly service

For further details please contact  
Pete Williams on 07901 803493  
or email  
[pwpetewilliams@googlemail.com](mailto:pwpetewilliams@googlemail.com)

availability), so book ahead to avoid disappointment. For more information, visit the website or call chair Donna Anton on 01736 753184

## **Hayle Football Club News**

**The Club** is at Trevassack Park, on the southerly outskirts of Hayle by Strawberry Lane. This has been the Club's home since 1999 after moving from Ellis Park.

As the Club has flourished, we are now on a ten acre site, both sides of

the road, Viaduct Hill. The primary site comprises the main pitch, (which has won the divisional best pitch award for the third year in succession), with a small covered stand, alongside is the youth pitch and a 1300 sq metre floodlit tarmac training MUGA.

This site also houses the modern clubhouse and changing rooms, across the road are two more pitches, a full size pitch, which is used for training and third/fourth team league fixtures. Alongside this is a mini soccer pitch for the 7 a side youth games.

The Club has four men's teams, the first team play in Division 1 West of the Carlsberg South West Peninsula

League managed by Anthony Reynolds and Mark Fenton. The Reserve side play in the Jolly's Cornwall Combination League managed by Steve Webber, Bryan Scoffin and Andy James. The third and fourth team play in the Whirlwind Sports Trelawney League Divisions 2 and 4 managed by Pete Bodilly and John Richards respectively.

The Hayle Ladies play in the Cornwall Women's League Division One.

On the youth side of the club teams start at under 9's, then under 10's and 11's. These teams come under Hayle's Games Programme run by UEFA B coach Mike Shilton. Also on the youth side of Hayle FC there

# **BIGGLESTONS**

TRADING IN HAYLE FOR OVER 130 YEARS



Summer, Autumn, Winter and Spring, we can supply 'most anything  
Try us first for Hardware, Ironmongery, Paraffin and all your Garden Supplies

**01736 752219**

are teams up to Under 16's, all who play in the Kernow Youth League.

This summer saw a change of Chairman, when Shaun Barber stepped aside for Bob Butler.

If you are interested in joining Hayle FC you can contact the Secretary **Bella Richards on 756754**. Or come along and take in a game. Fixtures are listed on the Official Website at

[www.haylefc.co.uk](http://www.haylefc.co.uk)

**If you bring along this page from The Pump you will be entitled to free entry to the game and a free cup of tea in the clubhouse!**

The Licensed Clubhouse is also available to hire for functions. Contact Bar Manager, John Richards on **01736 756754**, at the clubhouse on match days, or on **01736 757157**. Our playing field is at

**Trevassack Park, Viaduct Hill, Hayle. TR27 5HT**

Paul Birch

## Hayle in Bloom Judgement Day

**Hayle** was judged in the South West in Bloom competition on Thursday 12 July. Despite the very heavy rainfall on that day, everything went swimmingly and the judges enjoyed meeting the

## The Gallery Coffee Bar

Warm & Welcoming  
With Indoor & Outdoor Seating

- ☼ Lavazza Coffee
- ☼ Teapig Teas - Herbal Infusions
- ☼ Range of gifts & paintings made by local artists for sale
- ☼ Warm bacon rolls sold all day
- ☼ Delicious Homemade Cakes & Filled Rolls
- ☼ Toasted Teacakes
- ☼ Shmoo Milkshakes & Toppings
- ☼ All available for take away



1 Chapel Terrace, Hayle  
01736 756829  
Dogs Welcome

## THE FARM SHOP

31 Penpol Terrace, Hayle  
TR27 4BQ

OPEN - 6 DAYS A WEEK  
8 AM - 5 PM

FOR ALL YOUR LOCAL PRODUCE  
Fruit, vegetables, plants and  
flowers, free range eggs,  
Cornish potatoes.

**NOW IN**  
New potatoes, local  
strawberries, runner beans,  
bunches of carrots & beetroot.

Bloom group.

We get our results on 20 September at Weston Super Mare .

I would like to say a huge **Thank You** to everyone involved on the day - especially Nick & Alison at Paradise Park.

Margaret Tanner, Chairman

## CHILDRENS HOSPICE SOUTH WEST--LITTLE HARBOUR

The Hayle Group of Friends have continued raising funds for The

Children's Hospice South West which now includes in its funding Little Harbour at Porthpean accommodating Children and their Families from Cornwall and West Devon.

Little Harbour was opened in December last year after a fantastic fund raising effort by the people of Cornwall .The Hayle Group of Friends is extremely grateful for the support of the people of Hayle and the surrounding district in its continued efforts to raise funds for CHSW ( Little Harbour ) so far this year £7500.00 has been raised!

Their efforts will continue and in addition to the events they have organised or supported would be delighted to assist in any ideas anyone has to hold events to fundraise for the Hospice. Please contact Jill Sharpless on **01736 756896** with any ideas that need supporting.

**BARTON**  
**print**

Tel: 07799 411525  
Fax: 01736 757022

Quick Reliable General  
Printing Service

JUST A SMALL SELECTION OF THE SERVICES WE OFFER!

- BUSINESS CARDS
- COMPLIMENT SLIPS
- NCR PADS / SETS
- LEAFLETS
- MENUS
- NEWSLETTERS
- ENVELOPES
- LARGE FORMAT PRINTS
- LETTERHEADS
- OVERPRINTING

- RAFFLE TICKETS
- B/ W COLOUR COPYING

COMPETITIVELY PRICED

1 Turnpike Road, Connor Downs

Telephone 07799 411525 01736 754220

### BIZ AND BYTES

07974 647524 01736 755971

If you require computer assistance, either training or to resolve a problem then give us a call. Visits arranged to suit you.

Looking after the home user and small business.

WEBSITES • BROADBAND • TRAINING •  
COMPUTER SUPPLY • TYPING



www.bizandbytes.co.uk  
enquiries@bizandbytes.co.uk



The Hospice can be visited on the first Monday in each month, enabling those who have generously supported it to see what a wonderful facility it is, now benefiting Cornish Families.

To visit, please contact Little Harbour on 01726 871800.

**Thank you to the people of Hayle we look forward to your continued support.**

\*\*\*\*\*

**Feeling Left Out?**

Are you a past PUMP contributor who is no longer sending items to the pump, or whose material for some reason is not ‘getting through’?

The Pump team has had a reshuffle with new people and new ways in getting the Pump into print, so check the inside cover of the Pump to see the drop off points and email address for submitting articles. Any other method may no longer work!!

Editor.

**Hayle Rotary News and Show**

The Rotary Club of Hayle has just completed its year under President Norman Emberson who has passed the baton to President John Lloyd who has many ideas as to how the Club will be celebrating the 40 years



**Webb & Philp Ltd**  
electrical contractors



**All aspects of Electrical work undertaken**

Free Estimates, No Job Too Small  
Prompt, Reliable, Fully Qualified, Est. 1972

- ✓ Re-Wires
- ✓ Security
- ✓ Showers
- ✓ New Build
- ✓ Testing
- ✓ Maintenance
- ✓ PAT Testing
- ✓ Extra Sockets & Lights

**Telephone/Facsimile 01736 753651    Mobile: 07768 210227**  
**email: electricians@webbandphilp.co.uk**

of service to the community of Hayle.

Norman's year has been very successful with great involvement within the town, nationally and internationally. We played an active and successful part with many other clubs within the Hayle district to help with their charity fundraising and enhancing the profile of Rotary to the benefit of our town.

Every year we work with the schools on their very successful Rotary Youth Speaks entrants and this year was no exception. The junior schools have also embraced our popular Design Competition whilst Hayle

Community School continues to dazzle with their culinary skills and business acumen which we supported since their conception.

The health of our citizens is checked free of charge each April by qualified medical staff in our Blood Pressure/Stroke Awareness campaign courtesy of the local Cooperative Retail Stores, this year we have contributed over £1000 to the Phoenix Stroke Appeal. The eradication of polio is still ongoing and we are inching our way towards success in cleansing our world of this disease.

Fundraising for all these and many other projects is now in progress with a series of BBQ evenings at the Calloose Caravan Site in Leedstown .

Our Annual **Classic, Vintage & Unusual Vehicles Show**, with stationary engines etc. and 14 classes in the **Fun Dog Show** taking place at **the Hayle Rugby Club on 4th August**.

Plenty to see and do with entertainment for all ages taking place within the ring area. **Opening at 11.30** by BBC radio Cornwall's Martin Baillie with the Fun Dog Show taking place at 1.30pm and a Grand Parade of all vehicles starting at 3pm. Superb raffle with many prizes and any charity wishing to come along and fund raise/publicise their particular project

PASSMORE EDWARDS  
INSTITUTE



## MEETING ROOMS FOR HIRE

Hayle's Village Hall  
has a variety of rooms  
for hire, suitable for  
2 to 60+ people.

For more information visit:  
[WWW.HAYLE-PEI.ORG.UK](http://WWW.HAYLE-PEI.ORG.UK)  
Or call: 07851-183775

13-15 Hayle Terrace, Hayle, TR27 4BU  
Charity Number 268429

will be most welcome free of charge. Just let us know before the day please. Admission £2.50, (children free).

As with most voluntary clubs our club is seeking new members or helpers to assist with meeting our heavy programme of serving the community of Hayle and would be very grateful if anyone could help in any manner.

Please contact **Hon. Sec. David Raymer 01736 755029** or **Trevor Osborne 01736 793596**.

*Trevor Osborne*

*Hayle Rotary Club*

## **New contemporary art gallery in Hayle**

**Tangerine Gallery**, an exciting new contemporary art gallery based in the heart of the St Ives bay at the centre of Cornwall's creative quarter, opens on 4 August 2012.

Tangerine Gallery is nestled in a listed 19th century converted stable block in the grand historic setting of Harvey's Foundry in Hayle, in Foundry Lane

The gallery features work from a range of Cornwall-based artists with an exciting programme of exhibitions and installations over the coming

## **Computer / Laptop Problems?**

I can restore your computer or laptop to full working order for a fantastic price

### **NO CALL OUT CHARGE**

Professional repairs and maintenance of full systems and networks

Call today for a FREE no obligation quotation

**PC REPAIRS • PC NEW BUILDS • PC REBUILDS •  
PC UPGRADES • PC TRAINING • DATA RECOVERY •  
NETWORK INSTALLATION & MAINTENANCE**

For a prompt and reliable service  
call Tim Cogher at TeeCee Tech today



**07730 283433**



**01736 850798**

months.

The first exhibition includes Scale Carol Burns Scale: An exploration of the importance and methods of delivering scale within abstract painting, and photographer Ewen MacDonald plays tribute to the great American artistic frontier of the abstract expressionists with his American Series photography.

An open exhibition is planned for January with a call for entries being launched in November with the first prize of a solo exhibition at the gallery.

Alongside original artworks for sale, Tangerine Gallery also offers a

bespoke picture framing service as well as artisan frames for sale through its sister studio Gwithian Studio.

The opening takes place on 4 August as part of an open day at Foundry Farm Stables, when artisans, arts and makers will throw open their studio doors to visitors and shoppers. Alongside Tangerine Gallery, Foundry Farm is home, to artists, jewelers, craftspeople, photographers, and complimentary therapists, who will be offering free mini sessions on the day.

Visit us at:

Foundry Farm, Foundry Lane, Hayle

## W J WINN FUNERAL DIRECTORS

We are here to help you 24 hours a day

- Funeral Pre-Payment Plans
- Memorials
- Private Chapels of Rest

### WJ WINN

Trenwith Terrace  
St Ives TR26 1QE

**Tel: 01736 793029**

### WJ WINN

69 Fore Street  
Hayle TR27 4DX

**Tel: 01736 752124**

### CHARLES BRYANT

North Road, Goldsithney,  
Cornwall TR20 9JY

**Tel: 01736 710318**

### MARAZION FUNERAL SERVICE

Back Lane, Marazion, Cornwall TR17 0HE

**Tel: 01736 710318**



Part of Dignity plc. A British Company.



Email: [info@tangerinegallery.co.uk](mailto:info@tangerinegallery.co.uk)  
or call: **01209 717860** for more  
information

\*\*\*\*\*

*My interest in semaphore is flagging !*

## **HAYLE LIONS FUN DAY**

**Hayle Lions** will be having a "Fun Day" on Hayle Recreation Ground on **Sunday 12th August, It will commence at 12.30pm until 4.00pm**

Admission and Parking is free

Children's games, Tug of War, Stalls, Live Music, A Bar-b-que, Tea and Cakes for sale along with a Bar.

If you want to book a stall please telephone **Tess on 01736 759658** or for more information about the day contact **David on 07766662908**

The Lions "Fun Day" has not been on for a number of years, so please come and support the day so that it may again become a yearly event . Hayle Lions would also like to thank everyone that supported the "Family Day" held in May with Hayle Rotary in support of "The Phoenix Stroke Appeal" which made £1,000.

Maureen George - Club Secretary

## ***Help Needed !***

**Transition Penwith's "Resilient**



**Classes at the  
Passmore Edwards Institute**

**Mondays 7.00-8.30 pm  
Tuesdays & Fridays 9.30-11.00 am**

**For further details  
contact Gwyn**

**t: 01736 791784  
m: 07815 945695**



**[www.kleeneze-hayle.co.uk](http://www.kleeneze-hayle.co.uk)**

**All your favourite hard to  
find Homecare Health products  
and quirky gadgets**

**NOW ONLINE**

**This 88 year old British catalogue  
company has joined the Web!  
Order online but still receive the  
friendly free delivery and pay on arrival  
service from your local distributors**

***All online orders will receive a  
FREE Mystery product sample!***

**See you soon Nick & Jan Pincott**

**Penwith Directory"** has now been published and help is needed to deliver it in Hayle.

There are about 100 - 150 directories with addresses of people who have requested them.

If you are able to deliver a few in your immediate vicinity, perhaps where you regularly walk to the shops or out with the dog, they would be very grateful.

If everyone was able to deliver even five, say, then the job would be done quickly and easily with no stress on one person!

Also needed are drop off/ collection points and maybe one or two people to organise the directories into location order.

If you are able help, please contact **Jonathan How** at: [info@transitionpenwith.org.uk](mailto:info@transitionpenwith.org.uk)

Many thanks!  
Bianna

## Heyl St. Piran Singers

**The ladies' choir** has had a busy time. On Friday 4th.May we entertained an enthusiastic audience at the Hayle Day Care Centre. Following our performance we donated a piano to the Centre for their use, which was much appreciated.

We were also invited to sing at the wedding of the daughter of one of

## Café Riviere

*Just across the double bridge*

*next to*

*Hayle's Open-Air Swim Pool and Sub-tropical walk.*

*Visit us for lunches, hot food, snacks, ice-creams, cream teas, hot & cold drinks.*

*Take-away available.*

our members at the lovely Tredavoe Chapel, as well as subsequently entertaining the Thursday Club at Camborne.

Saturday 26<sup>th</sup> May saw us at the St. Uny Church in Redruth where we performed jointly with "Raise the Ruth" choir, - a very enjoyable and successful evening.

The choir also took part in the Queen's Diamond Jubilee event held on the King George Memorial Walk here in Hayle. Several of our members took part in the gig racing, a very brave decision on their part, as most of them had never been in a gig before and the weather wasn't exactly favourable - so well done ladies!

As well as enjoying its singing, the choir also has a busy social side and on Saturday 23<sup>rd</sup> June we held a very successful "Music Through the Decades" dance evening at Hayle Rugby Club".

Heyl St. Piran Singers now have a new look musical team, with Ann Birch and Brian Jay as co - musical directors, interchanging the roles of conducting and accompanying. If you enjoy singing do come and join us, we have a very large and varied repertoire to suit all tastes.

For further information you can

## Do you enjoy singing? **LOCAL VOCALZ!**

A lively adult choir for the West Cornwall area, singing a wide range of music.  
Mondays, 8.00 pm to 9.30 pm at Passmore Edwards Institute, Hayle  
why not come along to a rehearsal?

£3.00 per session  
Music reading desirable but not essential - we'll teach you!


**Details 01736 759944**


[www.localvocalz.co.uk](http://www.localvocalz.co.uk)


## **MUSIC LESSONS**

Piano, keyboard, organ, singing  
and theory of music

 Beginners to diploma level

 Adults and children

 Examinations or fun!

 No group tuition whatsoever  
— strictly "one to one" basis

NEIL SHEPHERD

**Details 01736 759944**

[www.neilshepherd.org.uk](http://www.neilshepherd.org.uk)

**ccc**  
**CORNWALL CHIROPRACTIC CLINIC**  
 — maintaining your lifestyle —

**Now Available at the Clinic**

Chiropractic	Sports Injuries
Chiropody/Podiatry	Hypnotherapy
Holistic Therapies	Acupuncture
Diet & Nutrition	Pilates

Tel: 01736 759088  
 enquiries@cornwallclinic.co.uk  
 www.cornwallclinic.co.uk

21 Foundry Square, Hayle, TR27 4HH

**The Sleepy Hollow**  
 Your Alternative Gothic Gift Shop

Family run Gothic Gift shop.  
 Selling a wide range of items, from Gothic gifts,  
 to candles, incense, clothes and more.

Visit our shop at Unit 3 - Pratts Market,  
 Chapel Terrace, Hayle TR27 4AB

**07747 078274**  
 www.thesleepyhollow.vpweb.co.uk

slates and fitting up the table ready for play at the Passmore Edward Institute.

Meetings were held in the August of 1922 where work in connection with the fitting up of the club room was discussed. Mr. Blewett proposed that the Hayle British Legion Club be founded for the social welfare of ex-servicemen of this district.

September saw all the seating in place and arrangements were made and a programme drawn up for the official opening of the club room by Sir Courtney Vyvyan on the 27th September 1922, and the room is still in use today for snooker!

To celebrate this outstanding occasion the branch will be holding a concert in St. Elwyns Church on Sunday **September 9th at 7.30pm.**

**by Praze Hayle Choir** (further details to follow nearer the time in local paper.)

Shirley Hayes  
 Chairperson RBL.

contact **Ann Birch on 01736 752335** or **Geraldine Maas on 01736 755162**. The choir meets every Thursday evening at Hayle Methodist Church Hall from 7.30 to 9.30 pm

## Hayle Royal British Legion 90<sup>th</sup>!

The Hayle branch Royal British Legion was formed ninety years ago in September 1922.

In May of that year a billiard table was purchased for the sum of £50. In June they were fixing the

# Hayle Mayor's Walk for Cornwall Hospice Care

**Hayle Mayor**, Jayne Nannes, invites you to join the sponsored walk to help raise funds for Cornwall Hospice Care, incorporating St Julia's Hospice Hayle. Organised by Cornwall Hospice Care and supported by Mayor and Town Council, the walk takes place on **Sunday 9<sup>th</sup> September** and is open to everyone- dogs welcome. Registration and sponsorship forms are available from St Julia's Hospice, Hayle Town Council, and Hayle Library. Walkers choose between a 5 mile walk with some coastal footpath and slopes, or a 2 mile walk which includes the Memorial Walk and is suitable for all ages and abilities – including mobility scooters.

Mayor Jayne said "I am really pleased to be supporting Cornwall Hospice Care and I would like to encourage as many people as possible to join me and support this event to raise funds for a cause that is very dear to my heart. If you are unable to participate then please sponsor someone you know who is walking, or feel free to sponsor me."

Donations can be sent to the Hayle

## **CALVIN GOODWIN**

**Painter and Decorator  
City and Guilds qualified**

***No job too small***

**Tel: 01736 755639  
Mobile: 07594 031765**

*Please telephone to discuss your requirements or to arrange an appointment for a no obligation quote*

**[www.goodwindecorating.co.uk](http://www.goodwindecorating.co.uk)**

Town Council Office at 58  
Queensway, Hayle, TR27 4NX"

For more information call Sarah at St  
Julia's Fundraising office on **01736  
755770**

Sarah Newton,

### **Kruners Choir,**

### **MEN wanted!!**

**Kidz-R-Us** the junior Theatre and Musical group based in St Ives with many Hayle members, is rightly well known for the quality of its shows, but associated with them is "The Kruners", Kidz-R-Us' adult choir.

We are currently seeking male singers, especially in our bass section - although tenors are always welcome. We are a fun loving and lively choir and take our music seriously, but lighten up rehearsals with a 'wine & beer' break (bring your own - under 18's soft drinks only) and we meet every Tuesday evening at St. Ives Theatre at 7.30.

Our music is varied, including songs from Queen, Abba, Lady Gaga, Simon & Garfunkel.... The Hallelujah Chorus (just for a bit of contrast,, ) Angels, Fields of Gold - see our website for our full repertoire.

<http://krunerschoir.webeden.co.UK/>  
If you are a seasoned singer, in the Hayle and St Ives area or a complete novice who would like to try something new, come and meet us ... and if you want to bring along your lady we will always welcome altos and sopranos. If you know of anyone who might be interested please pass this message on. **Terrie, 01736 797708 & 07749 28023**

## Millpond Update-

**‘Circumstances beyond our control’** Firstly I must apologise for the non-publication of the previous update. This was due to circumstances beyond our control, much like the monsoons that have been falling for the past ten weeks since they declared a drought. It seems that our old enemy the jet Stream is in the wrong place again and our summer is marooned somewhere south of Gibraltar. I know that the state of the weather has long been regarded as a typical British joke, but at the moment our wildlife is finding it far from funny. If we don't get a prolonged dry, sunny spell our butterflies will be in trouble because their food plants are now thriving. The ducks have already given up any hope of a half decent breeding season and are now returning to the ponds at least a month early. They left early as well, because February and March were very dry and overly warm but no ducklings were



**NICK FARRAR**  
**WINDOWS & CONSERVATORIES**  
8 MARSH LANE, HAYLE, TR27 4PS

- BESPOKE WINDOWS & CONSERVATORIES
- INTERNALLY GLAZED WITH STAINLESS STEEL SHOOTBOLTS
- WHITE/MAHOGANY/GOLDEN OAK
- CLEARLINE GLAZING
- FULL REPLACEMENT FACIAS & GUTTERING
- 10 YEAR GUARANTEE ON ALL INSTALLATIONS

For a free quotation call...  
**01736 757818 or 07792 632635**

hatched. Over half the flock is back and the drakes have gone straight into moult so for the next few weeks they will all be in varying states of scruffiness. Even the Cayugas appear to be joining the general trend, their new friend hasn't yet, but that could be only a matter of timing.

Once again we have another rather handsome stranger on the pond, or should I say two strangers because two arrived but only one seems to have stayed. They appear to know the two Cayugas, so whether they came from the same place is a mystery, as is what breed they are. We hope the pair will eventually be re-united, but in the meantime the

singleton appears to have settled in on its own.

It is that time of year again when "Hayle in Bloom" is judged and the children's flower beds in Millpond Gardens really do look great. The children of Penpol School take pride in their handiwork and as this is their centenary year it has been a bit more special than usual.

Finally, I would like to thank John Bennett and ray Wyse for putting up our new notices and also Jewsons for lending us their drill. We are very grateful for all your help and support.

**Georgina Schofield.**

Volunteer Wildlife Warden



threads   
Creative Workshops and Supplies

Foundry Farm, Hayle, Cornwall TR27 4DW

Creative workshops for all.

**Kids' workshops throughout the holidays.**

Suppliers of fabrics, buttons & ribbons

---

Check out our website for details ~

**[www.threadscornwall.co.uk](http://www.threadscornwall.co.uk)**

# Some Good News for the Harbour

**Earlier this year** the government announced a Coastal Communities Fund with a first year budget of over £20 million. The objectives of the fund were an excellent fit for ideas we had for East Quay. So, in late March, we submitted an application for over £1.5 million for refurbishment work.

In early June we were delighted to hear that we have been approved to make a full Stage 2 application. Out of 16 applications from Cornwall, we believe ours was the only one to get beyond Stage 1.

Our project seeks to achieve quick and sustainable gains to act as the groundwork for ambitious long-term restoration of the harbour; to generate quality jobs in fishing, maintenance and downstream services; and to provide a pleasant and interesting environment for locals and tourists.

Specifically we are seeking to renovate existing structures on East Quay to provide facilities for commercial fishing, kick-start shellfish farming and restore and reinvigorate parts of the World Heritage Site.

Plans for East Quay include construction of a mezzanine floor to provide a fish restaurant above and fishermen's stores, showers and facilities below; provision of a wet fish shop; reconfiguration of the Vivier tanks for crustacean storage; and maximisation of downstream processing of fish. We will also provide enhanced support for fishing including engineering and electrical workshops. These straightforward plans may not even require planning permission and can generate many jobs. We are now working hard on the Stage 2 application with help from ING, Cornwall Council and Cornwall Development Company as well as volunteer support from local architects, engineers and quantity surveyors. We expect a decision by the end of the year.

Read more at

[www.hayleharbourtrust.org.uk](http://www.hayleharbourtrust.org.uk).

John Bennett, Chairman, Hayle Harbour Trust, Ltd., a Company Limited by Guarantee.

## **\*\*Celebrate\*\***

**Weddings, Christenings, Renewing Vows ect. Release two beautiful white doves nicely boxed for you to release into the sky. Can deliver to venue 10 mile radius of Hayle/Camborne. Celebrate a life by releasing two doves to represent the rising of the soul at funerals. Tel 01209 610410**

# **Over 50's Indoor** **Games Club**

Every 10 weeks we have a games afternoon with friends and neighbours, meeting at our house, with plenty of laughs and fun.

We would like to form a Games Club with free membership, to meet once or twice a month depending on the number of members. Couples and singles welcome. We have a good selection of quality board games, none of which are too serious or complicated and can be played in teams or with a partner. So if laughter, fun and a social get-

together interests you, please get in touch.

Robin & Pam Phillips (Hayle)

**Tel: 07974 884654**

## **PORDIC YOUTH VISIT 2012.**

**It is three years** since their last visit to Hayle, and it was enjoyed so much that they decided on a return trip, again in the care of youth leader Céline Diougoan.

They arrived on Saturday 7th July, camping at St. Ives Bay Site. They hoped to meet the Mayor, visit the

## **DOMESTIC CLEANING BY JANE**



Professional and friendly cleaning and ironing service to meet your needs.

Reliable and completely trustworthy.

Exceptional service.

Excellent references.

Insured.

Call Jane on  
01736 448966 or  
07786 676258

school, Hayle Youth Club and Paradise Park, and try Fish and Chips and Cornish pasty.

On Sunday afternoon Audrey and I met them at Paradise park which they loved, then left there in time to go to Hayle's new Sanders Fish and Chip Restaurant where they enjoyed their first taste of real fish and chips.

On Monday morning it was up to



meet the Mayor, Jayne Ninnes who welcomed them in French and answered all of their questions. In the afternoon they visited the Minack Theatre and Lands end.

Tuesday they went to Hayle Community School where they were made most welcome. They were split into three groups and spent time with pupils of their own ages 13-15 years

the school also kindly arranged lunch for them. in the evening they sampled Philps Pasties sitting on the seat and bank at Penpol creek, before being welcomed to Hayle Youth Club.

Wednesday was free time for sightseeing and on Thursday they struck camp and left Hayle for their trip back home.

The group and myself would like to thank Hayle Town Council, mayor Jayne Ninnes, Ellie Giggall, Town Clerk, Mrs Jackman and teachers at Hayle Community School, Paradise Park, Ian Sanders, Philps, and St. Ives Bay Caravan & Camping Park.

It would be good if at some time Hayle Youth club could visit Pordic!

Maurice Trathen.

## UP

I wonder if readers have ever



CVC  
Solicitors

### Cornish Venning Chellews

Confidence to Care For All Your Legal Needs

52 Fore Street, Hayle, Cornwall, TR27 4DY

01736-758750

enquiries@cvc-solicitors.co.uk ● www.cvc-solicitors.co.uk

realised how many meanings, such a small word 'Up' really has.

It is easy to understand 'Up' meaning toward the sky, or at the top of a list, but when we awaken in the morning, why do we wake 'Up'? At a meeting, why does a topic come 'Up'? Why do we speak 'Up' and why are the officers 'Up' for election, and why is it 'Up' to the secretary to write 'Up' a report? We call 'Up' our friends on the phone. And we use it to brighten 'Up' a room, polish 'Up' the silver, we warm 'Up' the leftovers, and clean 'Up' the kitchen. We lock 'Up' the house, and some chap fix 'Up' the old car. People stir 'Up' trouble, line 'Up' for tickets, work 'Up'

# PLANTECH

THE FRIENDLY RELIABLE SERVICE

- Lawns cut and borders weeded
- Hedges trimmed
- House, garden & building waste taken
- Garden clearance work
- Gravel, sand, topsoil delivered & laid
- Garage and loft clearances
- Free no obligation quotes

(Tel) 01736 754401 / 07979546434



## WONDERFUL WILDLIFE AND INDOOR PLAY AT PARADISE PARK!

Cornwall's top wildlife sanctuary, we bring an exotic touch to Hayle! Rare tropical parrots, penguins, otters, farmyard friends plus the Cornish Cough, all just up the road.

And there's the JungleBarn indoor play centre, fantastic fun for all ages and great for birthdays.

**Don't miss our August Weekend Specials**

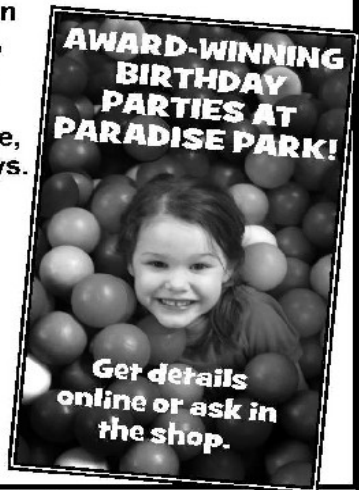
Keep up to date  
**Find us on Facebook!**

**Pandamonium**  
4th & 5th August

**Otterly Fascinating**  
11th & 12th August

**Red Squirrel Ramble**  
18th & 19th August

**It's a Hoot**  
18th & 19th August



Paradise Park, Trellisick Road, Hayle

Open every day at 10am Infoline: 01736 751020 [www.paradisepark.org.uk](http://www.paradisepark.org.uk)

# Lavenders blue Garden Nursery

A range of Perennials, Shrubs,  
Herbs, Grasses, Palms and  
Seasonal Bedding Plants available

**1 Penpol Avenue, Hayle**  
**01736 754844**

Opposite Penpol School  
Look for the 'garden open' sign

Open most sunny days, dry days  
and maybe some drizzly days

**Follow us on Facebook**  
**Lavenders Blue**



[www.lavendersbluecornwall.co.uk](http://www.lavendersbluecornwall.co.uk)

an appetite, and think 'Up' excuses. To be dressed is one thing, but to be dressed 'Up' is something special. A drain must be opened 'Up' because it is stopped 'Up'. We open 'Up' the store in the morning, but we close it 'Up' in the evening. We seem to be pretty mixed 'Up' about 'Up'. If you are 'Up' to it, you might try building 'Up' a list of the many ways 'Up' is used. It will take 'Up' a lot of your time, but if you don't give 'Up' you may wind up with a hundred or more. I could go on and on, but for now my time is 'Up' so it's time to shut 'Up.' Think about how many times you say 'Up' in a day.

Barry Thomas, (Former St Erth boy)

## GUITAR TUITION

At Reasonable Rates.  
All Ages & Abilities.  
Beginners Welcome.  
Acoustic & Electric.  
Contemporary &  
Traditional Styles  
Also Banjo & Ukelele



**Call: 01736 753709**

## SUMMER FETE

**Thank you** to everyone who helped with Millpond View Care Home's Summer Fete on 14<sup>th</sup> July, either by running the stalls or by coming to buy our homemade cakes etc.

The Cober Valley Accordion Band provided our entertainment and we managed to raise £600 for our Residents' Fund that pays for our visiting entertainers and outings for residents.

Thank You as well to the many local businesses that kindly donated raffle prizes.

Daphne Ray, Recreational Therapist  
Millpond View Care Home, 11  
Millpond Avenue,

Hayle **01736 752759**

## *Simply Unwind Clinic*

**There is much** talk about how stress creates disease. Still, our lives are so busy we hardly know how we feel – until there is some kind of discomfort or disease.

Our bodies are amazing creations, designed to compensate for much of this, but continuously stressed muscle tissue can eventually lead to pain or numbness. Suddenly we become aware of certain parts of our bodies to the point, where we change the way we move in order to avoid ‘that pain’ or discomfort. Little

do we realise how much this actually compounds the problem.

By reducing our range of movement e.g. by limping, we set up a compensatory pattern in the body with its own set of problems, we also significantly reduce the blood and lymph flow to the area involved, starving the supply of nutrients it so desperately needs and obstructing the elimination of wastes. Toxins accumulate, which can cause knots and trigger points, blockages form in our muscle tissues often resulting in inflammation.

It doesn't take a scientist to realise that gentle movement as well as body work therapies increase blood and lymph flow to the area and



*'A positive and warm environment for  
your child to thrive'*



*Mrs Rebecca Watkins*

**Ofsted Registered Childminder (& Qualified Teacher)**

**Please contact me on:-**

**Home - 01736 758296**

**Mobile - 07875 732559**

**rebeccawatkins84@hotmail.co.uk**

*SimplyUnwind at new Hayle Clinic*

*4 Foundry Farm, Foundry Lane*

**Kerstin Weber** CERTIFIED BODYWORK THERAPIST

*The Bowen Technique*

*Deep Tissue/ Holistic Massage*

*Indian Head Massage*

*Reflexology*

*£5 off all first three treatments*

Call 07782541043 or 01736754429

[www.simplyunwind.info](http://www.simplyunwind.info)

greatly speed up the healing process. But what happens when we become tense because of either repetitive physical or emotional strain? A tense muscle is a shortened muscle pulling on our bones or joints via the tendons. Connective tissue has a tendency to adapt to its shortest functional length and this can cause misalignment and distortion leading to pain and joint stiffness or even trapped nerves.

Correct tension in the tissue eases pain by allowing free joint mobility and improved posture. With ten years experience of combining Body Work with Healing I facilitate Deep Relaxation – creating the means by which you can begin to get in touch with your own inner healing potential.



**Want to play music?  
You're never too old!**

**Learn music the fun way  
with Graham Smith**

I'm a Registered Guitar tutor, a coach and session musician with over 30 years' experience. I believe that anyone can learn to play. I can help you to learn guitar, bass guitar and blues harmonica and to write songs and record them.

**Call me on 01736 740141**

(based near Penzance)

[graham@music tuitioncornwall.co.uk](mailto:graham@music tuitioncornwall.co.uk)

[www.music tuitioncornwall.co.uk](http://www.music tuitioncornwall.co.uk)

**At my new Hayle Clinic 'Simply Unwind'** I use various approaches such as The Bowen Technique, Deep Tissue Massage, Holistic Massage, Indian Head Massage or Reflexology, to address and change the tensional relationship of connective tissue, giving your body the 'helping hand' to restore its own structural and emotional balance.

**The Bowen Technique** is safe and effective for people of all ages from newborn to the elderly, and particularly effective with children and adults with neuro diversity, such as Asperger Syndrome or ADHD.

Kerstin Weber, Complementary Health Practitioner. Simply Unwind, Foundry Farm, Hayle

[.baffi16@hotmail.com](mailto:.baffi16@hotmail.com)

## Hayle Community School

### Correspondent

Rebecca Townsend year 8

### Books to Quench Your Thirst

–The Vampire Diaries are a well-known series of books written by L.J. Smith that have been read by many teenagers in the UK.

When I read this series I could not put the books down. The author explained every character's feelings so thoroughly it made me feel like a character in the book. I was just never bored because the story was so fantastic. I would be very surprised if there was one bad review because it is so brilliant! The plot is about Elena Gilbert whose world was turned upside down by a number of events including her boyfriend, Stefan Salvatore and his gorgeous brother Damon, both of whom were vampires. Throughout these amazing books Elena is torn apart by an unforgettable love trio. Stefan may love her more than the world but can he forget the events in the past, with his brother who took everything away from him including his ex-girlfriend, Katherine, who happens to look exactly like Elena, but is a dangerous vampire. As Elena's feelings grow for the blood-lust vampires, a new darkness threatens to destroy everyone she loves, but the main question is who will Elena choose, Stefan or Damon? Find out in the Vampire Diaries.

## **Daisy Potter**

The *Natural Home* is expanding. **Daisy Potter** vintage clothes, furniture and gifts. Enjoy the delights of organic food and a coffee while you browse our exciting range.

**At Johnny's Cafe  
Penpol Terrace**



### **NORTH WARD**

John Pollard

[www.djpollard.co.uk](http://www.djpollard.co.uk)

**07967 272808**

### **CORNWALL COUNCILLORS FOR HAYLE**

Contact us directly or through the Hayle One Stop Shop where we hold surgeries on the first Saturday of each month

**0300 1234 100**

### **SOUTH WARD**

John Coombe

**01736 752831**



## Regular Club Listings

**Hayle Old Cornwall Society.** First Friday of each month from October to May. Downstairs at Passmore Edwards Institute, 7.30pm.

Tel. Maria Prosser, 01736-755072

**Hayle Library Reading Group.** 2.00pm first Wednesday of each month. Free. Contact Hayle Library.

**Hayle Flower Club.** 4th Wednesday of the month, 7.30pm, Hayle Daycare Centre, in the conservatory.

Tel. 01736 757028.

**Royal British Legion.** Top floor of Passmore Edwards Institute. Every Monday, Wednesday and Friday evening, and Saturday afternoon.

Tel. 01736 758482.

**W.I. Hayle East.** 1st Tuesday of the month, 7.30pm, Philip Smith Annexe, Hayle Daycare Centre.

Tel. 01736 753503.

**Praze Hayle Choir.** Every Tuesday, 7.30pm. Methodist Hall, Mount Pleasant.

Tel. Don Metcalf 01736 757720.

**Hayle Meanderers.** Every Wednesday 10.30am Commercial Road car park, by Daycare Centre. Free, with contributions to car sharing.

Tel. Joan Smith 01736 793631.

**Hayle Camera Club.** 3rd Tuesday of month 7.30pm at Passmore Edwards Institute, Hayle.

Tel. 01736 753215.

**Hayle Twinning Association.** 2nd Monday of each month at Hayle Community Centre. 7.15pm in Room 7. Contact Mike Stuckey 01736 753755, [mikestuckey@tiscali.co.uk](mailto:mikestuckey@tiscali.co.uk)

**Hayle in Bloom.** Last Monday of the month, except for Aug & Dec. Held at

Hayle Rugby Club 7pm.

[www.hayleinbloom.org.uk](http://www.hayleinbloom.org.uk) for details.

**Hayle Harbour Users Association.** First Monday of each month, 7.30pm, Royal Standard Pub. A friendly meeting for any private users of the Harbour.

Contact Robb Lello on 01736 757632  
**Hayle & District Lions Club.** 2nd and 4th Tuesday of every month, 7.30pm at Passmore Edwards Institute.

Tel. Mel George 01736 756484

**Hayle and District Bowling Club.** 10am every Sunday. All welcome to try Lawn Bowls (weather permitting). Short Mat bowling indoors during winter months, ring for details.

01736 753565

**Hayle Samba Community Band.** Rehearsals every Tuesday 7:30 to 9:30pm Meeting Room at rear of The Royal Standard, Hayle.

Tel: Frank/Joy 01736-754976

**Hayle Rotary Club.** Meetings each Monday evening, except Bank Holidays, at the White Hart Hotel, Hayle 7.00p.m.

Tel: Trevor Osborne 01736 793596

**Hayle Darby and Joan Club.**

Fortnightly on Fridays at 2:30 pm.

Methodist Church Hall.

Tel 01736 711134

**Hayle Judo Kwai.** Meeting at The Downes, Foundry Hill, Hayle. Tues (5-9yrs) 6.00-6.50pm, Beginners and Primaries. 7.00-8.00pm, Primaries Thurs (10-15) 6.30-7.30pm, (16 and over) 7.30-9.00pm. Information from: Sensei Richard 01736-740723 or Lucy Alldritt, sec. 07581490714

**Hayle Monday Club.** Every Monday

(except Bank Holidays) 2.00 – 3.30pm at Phillack Church Hall. Tel: May Burgess 01736 756390.

**Heyl Town Band.** Rehearsals Tuesdays & Thursdays 7:30pm – 9:30pm, Junior band rehearsals Thursdays 6:pm - 7:00pm  
John Whear secretary 01736 754804 or john.whear@talktalk.net

**Hayle Line Dancing Club.** Every Monday at Hayle Methodist Church 7.30 – 9.30pm. Adults £3, Children £1 (includes light refreshment). Car parking available.  
Tel 01736 752610.

**Hayle Pilot Gig Rowing Club.** Rowing out of Hayle harbour most Tuesdays and Thursday evenings during the summer with weekend competitions, training and 'have-a-go' sessions too. Novices to serious

competitors catered for! Contact the club via the website  
www.haylegigclub.com

**Model Boat Club.** Wednesday evenings 7-9pm & Sunday mornings 10-12 noon, meeting at green chalet by Hayle outdoor swimming pool. Tel: 01736 755516, or Les on 01736 754254

**Save Our Sand.** 2nd Tuesday of each month, 7.30pm at the Passmore Edwards Institute. Hayle

**Table Tennis for Fun,** every Friday at 2pm at Hayle Methodist Church Hall, Chapel Hill, Hayle. Only £2 per session. Bats, balls and squash provided. John Nunn 01736 759686

**Hayle Local Vocalz.** A lively 60 strong mixed voice adult choir. Monday evenings 8pm, Passmore Edwards Institute, Hayle. Website:

## TJ'S CARPETS LTD.



**New Showroom at Tolroy Garage,  
58 Mellanear Road, Hayle TR27 6HF**

Come and see our wide selection of carpets & vinyls,  
laminates and patterns

**Our famous home selection service still available**

Full range of flooring accessories

**Call Now! 01736 757540 or 07976 608215**

Free measuring & estimate service

**“Before You Buy, Give Us A Try”**

www.localvocalz.co.uk Contact: Neil Shepherd 01736 759944

**St Ives and Hayle Community Choir.**

Tuesdays, 2pm St Anta Church Hall, Carbis Bay.

www.cornwallcommunitychoir.co.uk

Bathroom, golf course and experienced singers welcome!

Contact: Neil Shepherd 01736 759944

**Heyl St. Piran singers.** Every Thursday at Hayle Methodist Church Hall at 7.30 to 9.30pm. For details Ann Birch 01736 752335

**The Rotary Club of St Ives Bay**

New Rotary Club for men & women meeting on Tuesdays at the Carbis Bay Hotel 6.30 for 6.45pm. Contact the secretary on 01736 741348 or secretary@stivesbayrotary.co.uk

[www.stivesbayrotary.co.uk](http://www.stivesbayrotary.co.uk)

*To appear on this page, free of*

*charge, please send us details of your club/event, the time, dates and meeting place along with a contact phone number.*

---

---



## **Council Corner**

**August/September 2012**

### **Opening Hours and Meetings**

**In August** Council recesses until September. During recess there will be one meeting on 16 August when any planning applications will be

# **JC ELECTRICAL**

Your complete 24 hour Electrical Service

**Rewires • New Build • Lighting •  
Showers • Extra Sockets • Heating**

City & Guilds Qualified (Tests to BS7671)

Part P registered

Prompt and reliable friendly service

Free estimates and all work guaranteed

**Office: 01736 754543**

**Mobile: 07739 577549**



considered. Public Participation before the meeting at 7.15 pm. is limited to business on the agenda. The Council meeting after that will be on Thursday 6 September 2012 in the Community Centre Assembly Room.

In August the office will continue to open between 9.30 and 12.30 weekdays, if you have any issues please visit or contact us through the telephone number and e-mail address below.

### **Fire Station for Hayle**

After decades of campaigning Hayle gets its own Fire Station. The decision was recently ratified by Cornwall Council's Cabinet and it should be open on the Commercial Road Car Park by April 2014.



### **Council Current Priorities**

The Council is working on a number of projects. One is that of taking on five sites it owns but that have been managed and maintained by Cornwall Council. From 1 April 2013 the management of the five sites, which include the Recreation Ground and King George V Memorial Walk, revert to the Town Council. We are also preparing to take over Frank John's Centre next to the Community Centre for two years to see if there it is a workable extension to the

# **Fernleigh**

## **BED & BREAKFAST**

En-suite, Colour TV,  
Coffee & Tea making  
facilities in all rooms

 **NON SMOKING** 

**26 Commercial Road**  
**HAYLE, Cornwall**  
**TR27 4DG**

**Call 01736 752166**

[mrploppy@fsmail.net](mailto:mrploppy@fsmail.net)  
Mike & Lyn Reffold

Community Centre.

Other projects include improvements to the footpath over Wilsons Pool as part of our Jubilee Commemorations; improved beach access and signage in the vicinity of The Bluff, and Councillors are part of the working party trying to secure a Community Sports and Leisure Hall in the grounds of Hayle Community School.

### **Sponsored Walk**

The Mayor's sponsored walk is on Sunday 9 September with a choice of a two or five mile route, so please look out for further information in the press and on the Council notice



**HAYLE DAY CARE CENTRE**  
**Commercial Road, Hayle**

An affordable day care facility for the elderly of Hayle, St Ives and district

Transport • Freshly cooked meals

Also includes bathing and hairdressing  
Therapy and lively social interaction

Always a friendly welcome

Call 01736 755000

boards. Sponsorship and registration forms are available from the Town Council Office and St Julias Fundraising Office. The money raised will be donated to Cornwall Hospice Care.

### **Britain in Bloom**

Judging for the South West Britain in Bloom took place on 12 July and, while the weather was wet, the town looked wonderful and you can be sure judges can see past a bit of rain! The Council is delighted to support Hayle in Bloom for the superb work it does in the town and is grateful for the commitment and dedication of its members and the

town gardeners. Without them it would be difficult to achieve the high standards necessary for success. We hope that the hard work of the volunteers and gardeners will be rewarded again this year. Thanks to Paradise Park for hosting the delicious lunch. The results will be announced in Weston-super-Mare on 20 September.

### **Hayle Swimming Pool**

The Pool is now open between 11.00 am and 6.00 pm. Bad weather affected it for weeks but, now that the sun has come out we hope that it will be well used through the summer. The café is open so why not drop in for a 'dip' and a 'bite'!

### **Civic Service and Parade**

Diary entry: Sunday 7 October for the Mayor's Civic Parade and Service. Invitations to clubs and organizations in the town and visiting dignitaries will be sent out shortly.

Hayle Town Council

Hayle Community Centre

58 Queensway, Hayle

TR27 4NX 01736 755005

[townclerk@hayletowncouncil.net](mailto:townclerk@hayletowncouncil.net)

[www.hayletowncouncil.net](http://www.hayletowncouncil.net)

[www.facebook.com/pages/Hayle-Town-Council/440862479279027](https://www.facebook.com/pages/Hayle-Town-Council/440862479279027)



# Local Vocalz

**The last** few months have been extremely busy for Hayle's "Local Vocalz" Choir. After only 18 months in existence, 40 members of the choir enjoyed a three day concert tour to Brittany and Normandy, flying the flag for Hayle, and Cornwall, including visits to Rennes, Avranches and Bayeux where the choir

performed a concert in the stunning cathedral. Many members visited the Bayeux Tapestry while others enjoyed a glass of wine! A few weeks later, the choir came second out of 6 in the Wall Music Festival.

Hayle Rugby Club was the next engagement where we performed for Hayle Twinning Association and their guests from France.

In June, the choir sang a concert at St Anta Church at Carbis Bay as part of their concert series, and also at St Euny Church in Redruth. The highlight of July has been a special performance in the Holman Test Mine near Camborne. 45 members of the choir were given a guided tour of the mine, complete with hard hats, belts, battery packs and lamps, after which we gave a short performance



*1000's of greeting cards.  
100's of gift ideas.  
In store Loyalty Card scheme.*

# Celebrate

in Style  
Send  
Flowers  
Today.

**Flowertime Florist**  
[www.wesendflowers.co.uk](http://www.wesendflowers.co.uk)  
0800 056 0711

# LINDSAY'S DOG GROOMING

*Dog grooming for all sizes,  
breeds & coats.  
Specialising in Poodles.*



For more information,  
contact Lindsay on  
**01736 753864 or 07792 849240**



*Situated at Connor Downs  
in Hayle*      *Local  
collection  
& delivery*

# PAUL SHERRIS

**Hayle's only  
local family owned**

**FUNERAL  
DIRECTOR**

**Private Chapel of Rest  
Pre-Payment Plans  
available**

**West Terrace, Hayle.  
TR27 4JS.**

**01736 753969  
Day or night**

in the huge candle-lit underground cavern and enjoyed a pasty supper! The evening concluded with a "big bang" when one of the choir members detonated a large (and very loud!) underground explosion.

The choir is now preparing new music in anticipation of forthcoming performances which include St Ives Harbour Festival, two special "Jubilee" Last Night of the Proms concerts in St Ives and Penzance, Camborne Music Festival and a busy Christmas season. Another tour to France is planned for May 2013! There are vacancies in the choir for ladies, and we have four vacancies for men.

We now have 16 tenors and basses who are making a fantastic sound, but we could do with a few more! Are you up for a challenge? Are you able to cope with a lively programme of music making and social activities? – If so, why not consider coming to join us? It doesn't matter if you are in another choir - we try to avoid clashes wherever possible! Call **01736 759944**, or email [neilshepherd@yahoo.co.uk](mailto:neilshepherd@yahoo.co.uk). The choir website is [www.localvocalz.co.uk](http://www.localvocalz.co.uk)

If you would like to book the choir for an event, concert or other performance, please get in touch.

## **The Mexico Cross, Phillack.**

**Hedge trimming** on Mexico Towans has cleared undergrowth along Mexico Lane to reveal the Mexico Cross.

Described by Andrew Langdon in his book "Stone Crosses in West Cornwall" as a wheel headed churchyard cross, it was originally found lying in the schoolyard at Phillack where it had been placed for safety in the 1880s by the Rector of Phillack, Canon Frederick Hockin. Previously the cross had stood in the middle of the field on the western

side of Phillack Church until it was moved by the farmer. It was later re-erected in the hedgerow of the same field where it stands today.

The monument is made from fine-grained granite and displays an equal limbed cross in relief which is surrounded by beading around the edge of the cross-head.

The cross dates from the late twelfth or early thirteenth century and may have been a way marker on an old pilgrim's route. There is an ancient bank and ditch road across the Towans to Lelant Ferry which was probably laid down by the Saxons. This links the Ferry and the three

# St Erth & Hayle Cars

4 - 7 - 8 Seat Vehicles

Wheel Chair Accessible Vehicle

8 Seat Party Buses!

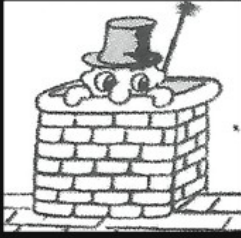
Polite, Friendly Staff



Airport Transfers, Local Trips, Nights Out  
Trips to Doctors + Much More!

**01736 75 40 40** or **0770 60 40 400**

[www.sterthandhaylecars.co.uk](http://www.sterthandhaylecars.co.uk)



## Lawrence Butcher Chimney sweep

Brush N Vac, Cows Fitted,  
Reliable Clean Service,  
Free Advice

Enfield Farm  
30 Hayle Road, Fraddam  
Hayle TR27 6EH

01736 850033  
07966 547829

loloubutcher@aol.com

churches of Gwithian, Phillack and Lelant to the Pilgrims Way to the Basilica of St James at Compostela in Spain. Small pilgrim's tokens in the shape of St James' cockleshell emblem have been found in the Sanctuary Fields behind Glebe Row. Here pilgrims could stay overnight on their way to and from Spain, and to other major centres of Pilgrimage.

Georgina Schofield. Hayle  
Community Archive.

---

---

## MERLIN PROJECT TALKS

*Like most communities, Hayle and district have people in the various stages of Multiple Sclerosis that also impacts on the families and friends of those affected.*

*Merlin Multiple Sclerosis Centre invites you to join them for a programme of talks, workshops and demonstrations here at the Merlin MS Centre. All the money raised will go to the centre and all lectures are being held here.*

**Tuesday 14 August. 2pm**

**'Facial Reflexology – Sorensensistern τM Neurological Reflex Therapy'.** Talk/Practical demonstration given by therapist *Graham Sluter MAR, ITECH(dip), MCThA.*

**Tuesday 18 September 2pm**

**'Horticultural links to China's past, presents and future.'**

*Talk by Gary Long; Head gardener at Trewithen Gardens.*

*Tickets cast £5 per person, to include refreshment and cake.*

*Details subject to change, please phone the Centre*

*01726 885530 to book a ticket.*

*Many thanks,*

*Ellie May*

*www.merlinproject.org.uk*

---

**Copperhouse Pool**—was created by building out from the Towans side and the creation of a sluice gate to impound tidal water for sluicing the waterways and a bridge for improved access.

Before the civil engineering of the waterways the estuaries were open. There was no enclosure of Copperhouse Pool, no Black Road and Black Bridge to create Wilsons Pool, and the Recreation Ground was open estuary.

Compared with the full surge of tidal water in pre-industrial days, each development restricted the flow of seawater, and with mine waste and agricultural silt being washed down the

Angarrack River, higher parts of the estuary silted up.

The old wooden gates under the Swing Bridge could open fully allowing a good inflow of water, and a smaller sluice, buried beneath the Swimming Pool now, also allowed in a substantial flow of water which at the highest tides allowed yachts to the extent that there were regattas!

The first restriction was the stopping of the sluice under the Swimming Pool some 30-40 years ago. From then it was simply not possible for the same volume of water to come through the remaining sluice gates before the outside levels dropped again.

This was compounded when sluicing



**Angel Ticklewand  
Craft Emporium**

*For hand crafted gifts and presents*

**Embroidery, needlecraft, soft toys,  
decorative and collectable figures,  
glassware, woodturning,  
and much, much more.**

*Our embroidered items can be  
personalized in our in-shop workshop  
- add a name or a personal message  
to make it an extra special gift!*

Find us on the balcony at Pratt's Market  
11-13 Chapel Terrace, Hayle TR27 4AB

[www.angelticklewand.co.uk](http://www.angelticklewand.co.uk)

## **P G FRANKLIN**

Chapel Hill, St Erth

Carpenter & General House Repairs  
Garden Landscaping

NO JOB TOO SMALL

**Telephone: 01736 757360**

**Mobile: 07778 739341**

gate which restored the ability of tides to use the full size of the channel under the swing bridge.

The control of the flood prevention gate

has come under the Environment Agency, who keep the gate almost permanently down with only about a meter gap to allow water in. This means that the water level is always far lower than it used to be.

This has given rise to the idea that “Copperhouse Pool has silted up” but, while there has been silting, the biggest negative effect in recent years has been the policy of the Environment Agency.

Attempts to get more water allowed into the pool have been rebuffed by the Environment Agency, on economic grounds as they claim there is a cost element in sending an operator to Hayle to vary the height of the gate.

In other parts of the UK, the EA have

spent money reverting farmland back to Salt Marsh, yet in Hayle they allow Wilsons Pool to dry out and change character.

Wilson's Pool and Copperhouse Pool are part of the Hayle Site of Special Scientific Interest which is managed by English Nature, most of Copperhouse Pool is owned by the RSPB, the Environment Agency have responsibilities, and the Harbour Company have legal rights and responsibilities. **Editor.**

## ***HISTORY OF PENPOL HOUSE***

**Before the Industrial Revolution** Hayle town did not exist, only the village of Phillack with surrounding hamlets, the tide sweeping through the estuary in an uninterrupted stretch of water from St Erth to Phillack, the Celtic “An Hayl” (the estuary), being the name eventually applied to the growing town. When copper smelting started about 1740, John “Merchant” Curnow, who lived in Penpol House, began building quays on the estuary. The land around the shore was very muddy and a field on the site of The White Hart was called “The Pool”. The house, with a large amount of

land, stood above it, and was called “Penpol” or “Head of the Pool”.

The earliest references recording the estate date back to the 13<sup>th</sup> century and some parts of the house indicate medieval origins. In the rafters appear to be the remains of an earlier roof, much smaller and steeper, once possibly thatched. In 1394 the property appears to have been owned by the Godolphin family and records show that in 1639 they sold it to Anthony Honeychurch of St. Erth who later sold it to Peter Pendarves of Bodriggy House, another of Hayle’s fine old buildings.

In 1709 John Curnow of Ludgvan leased some of the estate, probably including the house, from the Arundel family. From his death in 1731 his son John “Merchant” Curnow lived there. His daughter married Richard Millet of Marazion and they lived there from 1771. In 1778 he bought the property from the Rt. Hon. Lord Arundel.

The Ellis family came from St. Erth in 1745 and from 1748 Harris, Ellis and Co. were involved in the development of copper smelting, before merging with the Cornish Copper Company. John Ellis then his son lived in a house at Carnsew, later demolished to make way for the railway viaduct. One wall remains at the end of the viaduct and a window recess can still be seen.

John’s grandson Christopher Ellis

T	Come to	O
	<b>BLEWETTS</b>	
	<b>TOY SHOP</b>	
	19 Penpol Terrace, Hayle	
	TR27 4BQ	
Y	01736 753012	S

came to Penpol in 1890, his second son Colonel John Ellis buying it in 1921. On his death the property passed to his nephew Major Thomas Ellis who subsequently gave some of the land to the town which became the playing field now used by the Bowling Club and known as Ellis Park. In 1977 the remaining fields of the estate were compulsorily purchased. Penpol Avenue was originally the elm lined private drive to the house.

Rozanne Ellis



**Anthony Solomon/ Painter & Decorator**

All aspects of decoration Free Quotes!!  
undertaken!! Tiling!! No job too small!!

**Tel:01736798585/07890988236**

**anthony.solly@hotmail.co.uk**

# Hidden Words Quiz by Cleverclogs

***This time we are looking for things found and used on a farm.***

1. Don't distract or irritate me while I'm concentrating.
2. I bought this pad especially to make notes at the meeting.
3. A couple of years ago we went on a tour of Orkney and Shetland.
4. At first you think the taste is mild, then there's a hot kick!
5. I've come to get his tablets – he's got one of his headaches.
6. Was it rough? Yes, especially between Orkney and Shetland.
7. We followed the trail, erring here and there, but got back O.K.
8. He was the best player on the field, bar none, without a doubt.
9. These are the changing rooms. The courts are off the club room.
10. It's sad seeing these people's hovels, they're so poor.
11. Making the pie you use just raw ingredients – what flavours!
12. You shoot both arrows and score with the one nearest the bull.
13. This Cornish herb ale really tastes good, I think it will win.
14. He was really homesick, letting his emotions rule his head,
15. The mini-zoo had kangaroos,

terrapins, emus, snakes and more.

## **Answers to Railway Quiz in No.103**

1. Signal
2. Rail(s)
3. Train
4. Wagon
5. Track
6. Terminus
7. Tunnel
8. Siding
9. Coach
10. Lineman
11. Station
12. Porter
13. Sleeper
14. Railhead
15. Bogey

You liked this quiz as there were a lot of entries and several correct answers this time, the question that had many fooled was 10 which many answered as 'Line' but which was in fact 'Lineman'

The winning entry, picked from a hat by Master Cameron Jones aged 7 is **Mr Laurence Fleming of**

**Angarrack. Congratulations!**

*To win a prize voucher worth £20 to be spent with any of our advertisers, send your answers along with your contact details to [editor@haylepump.org.uk](mailto:editor@haylepump.org.uk) or one of the drop-off points listed inside the front cover. The winner will be drawn at random from all correct entries received by 20 Sept 2012.*

**P.D.H Builders & Roofing**  
High Quality Guaranteed Work

Contact: Paul Moyle  
**07989 075517 01736 719469**

5a Bodriggy Street, Hayle TR27 4NB  
[pdhbuilders1@hotmail.co.uk](mailto:pdhbuilders1@hotmail.co.uk)

FOR ALL OF YOUR BUILDING REQUIREMENTS

# HAYLE Pages

39 Angel Ticklewand, Craft Emporium  
41 Anthony Solomon Painter/Decorator  
10 Barton Print  
**8 Bigglestons Hardware**  
10 Biz & Bytes Computers  
41 Blewetts Toyshop  
19 Calvin Goodwin, Decorator  
16 Café Riviere  
22 Celebration Doves  
38 Chimney Sweep  
18 Cornwall Chiropractic  
29 Cornwall Councillors  
3 C Spray Bath Renovations  
24 CVC Solicitors  
29 Daisy Potter  
4 David N'jie Decorator  
4 Des Button Electrician  
23 Domestic Cleaning  
**9 Farm Shop (The)**  
33 Fernleigh Guesthouse  
**35 Flowertime**  
9 Gallery (The) Coffee Bar & Gifts  
28 Graham Smith Guitar Tutor  
26 Guitar Tuition  
15 Hatha Yoga Classes  
6 Hayle Cycles  
**34 Hayle Day Care Centre**  
32 J.C. Electricals  
**5 Keast Opticians**  
15 Kleeneze  
26 Lavenders Blue Garden Nursery  
36 Lindsay's Dog Grooming  
17 Local Vocalz  
17 Neil Shepherd Music Teacher  
20 Nick Farrar Windows  
25 Paradise Park

12 Passmore Edwards Institute  
36 Paul Sherris Funeral Service  
42 P.D.H. Builders & Roofing  
44 Penpol Garage  
7 Peter Williams Carpet Cleaning  
40 P G Franklin Handyman  
25 Plantech  
27 Rebecca Watkins Childminding  
28 Simply Unwind Clinic  
18 Sleepy Hollow (The) Gothic Gifts  
37 St Erth & Hayle Cars  
13 Tee Cee Tech Computers  
21 Threads Haberdashery  
31 TJ's Carpets  
11 Webb & Philp Electricians  
14 W J Winn Funeral Director.

\*\*\*\*\*

You can pick up your FREE copy of the Hayle Pump Newsletter at any of those advertisers listed above in **bold**. You can also get a copy from any of the other regular pick-up points – **Hayle Library, Hayle Community Centre, Bodriggy Health Centre, Wyevale Garden Centre**, and the following Post Offices – **Copperhouse, Martins & Connor Downs**. You can also view current and past copies on-line at our wecsite.

[www.haylepump.org.uk](http://www.haylepump.org.uk).

\*\*\*\*\*

*There are no letters this issue - please put pen to paper, let us have your points of view.*

# Penpol Garage

*In tune with technology*

Established over 20 years we have grown from strength to strength by word of mouth referrals due to the quality of our work and service.

**Does your car need servicing?  
Dashboard warning light on?  
Is your car running well?**

**Why pay expensive 'Main Dealer' servicing and repair bills when we can save you £££'s?**

**At Penpol Garage we have the experience, training and use the latest technology to maintain and repair your vehicle to the highest standards.**



**Did you know...we can also save you money by re-mapping your vehicle?. Scan the QR code below for further information and give us a call...**

**Telephone: 01736 - 757011**

**Mobile: 07921 218448**

**17A Penpol Terrace, Hayle, TR27 4BQ**

**email: [info@penpolgarage.co.uk](mailto:info@penpolgarage.co.uk)**



MOST MAJOR CARDS ACCEPTED













































L#####À#####F`###  
###š^<+`ií# :Ã +`ií#Ê, Ð#`ií#¥##  
#####À###H°◆





















L#####À#####E`### ##à-  
#,,α^Í#´#,,α^Í##+[~α^Í#x  
ç#####Ø####H°  
◆



**Anthony  
Solomon/  
Painter &  
Decorator**  
All  
aspects of  
decoration  
Free Quotes!!

undertaken!!  
Tiling!! No  
job too small!!

**Tel:017367  
98585/0789  
0988236**

**anthonysoll  
y@hotmail.  
co.uk**





