

# **HAYLE PUMP NEWSLETTER**



**WILDLIFE  
WONDERS**

**SEE  
STORY  
INSIDE**

**FREE COPY, please take one.  
Made possible thanks to our advertisers**

# Hayle Pump Newsletter

Passmore Edwards Institute  
13-15 Hayle Terrace, Hayle, TR27 4BU  
[www.haylepump.org.uk](http://www.haylepump.org.uk)

## Editor

Graham Coad  
[editor@haylepump.org.uk](mailto:editor@haylepump.org.uk)

## Desk Top Publishing

Jeff Turk  
[ntp@haylepump.org.uk](mailto:ntp@haylepump.org.uk)

## Treasurer

John Jansen  
[treasurer@haylepump.org.uk](mailto:treasurer@haylepump.org.uk)

## Advertising

[ads@haylepump.org.uk](mailto:ads@haylepump.org.uk)

## Web Site

John Bennett  
[webmaster@haylepump.org.uk](mailto:webmaster@haylepump.org.uk)

## Team Members

Sarah Turk, Jeff Turk, Paul Scott  
[Jeffandsarah@theturks.fsnet.co.uk](mailto:Jeffandsarah@theturks.fsnet.co.uk)

## Subscriptions & Web

The Hayle Pump can be viewed and downloaded online at:

[www.haylepump.org.uk](http://www.haylepump.org.uk)

For 6 issues by mail, please send a cheque or postal order for £3.50 made payable to **Hayle Pump Newsletter** to:

### HAYLE PUMP SUBSCRIPTIONS

35 Penpol Terrace,

HAYLE TR27 4BQ.

**Please state delivery name & address**

### Code of submission

The Hayle Pump would like to remind readers that all material accepted as points of view are not necessarily the opinion of the Editorial Team.

**Items received should be a maximum of 400 words and may be edited or omitted due to limitations on space.**

News, letters, notices etc. must be emailed to [editor@haylepump.org.uk](mailto:editor@haylepump.org.uk) or dropped off at **Store 28** or the **Passmore Edwards Institute**

**The decision of the Editorial Team is final**

**Please note new deadline for copy is now the 13<sup>th</sup> of the month. Next is 13<sup>th</sup> March**



## Display Sizes and Advertising Rates

Page	Size (mm)	Price
Full	190 x 130	£90.00
1/2	130 x 95	£30.00
1/4	63 x 95	£15.00
1/8	63 x 42	£10.00

**Advertising Deadline  
13<sup>th</sup> of prior month**

**Please visit our website for more information, guidelines for artwork submission of adverts and important notes to advertisers.**

[www.haylepump.org.uk](http://www.haylepump.org.uk)

## **Editorial**

**It's a bit late but HAPPY NEW YEAR** everyone-- Remember the End of the World prophecies for December last???

We're all still here thankfully. We had the official opening of Jubilee Bridge to North Quay, where works are coming to an end, the Café Riviere, serving the Swimming pool in Season and Memorial Walk users is still trading, with a comfy little wooden hut to shelter from the elements, and the Sunday Closure to motor vehicles for the Memorial Walk starts very soon. Behind the scenes matters are progressing with the Wave Hub, its first generating device and the related Business Hub at the old Electricworks site, with planning permission being submitted.

Back in town, there's hardly an empty shop to be seen and our business community are working hard to provide us with goods and services...Please try to support their efforts by using Hayle businesses where you can. (See list of Advertisers inside back page.)

This year should see repairs and development start on South Quay in Foundry.

Meanwhile, changes here at the PUMP! We have been able to do so much of it with a minimum of staff and maximum of computerisation, in a drive to keep the Pump looking the same but produce it efficiently, and largely it has worked but it is a lot less FUN.

People liked the old ways with a

team of volunteers and helpers, and meetings and a clubbish, community feel. The mag. may be pretty much the same, but it's less of a pleasure to produce, so we are asking for volunteers, helpers, members to come and join us, and re-instating our meetings to get back some of the sense of fun.

We are completely voluntary, unpaid and just do it for community involvement and to provide a service for our town. **We will be happy to see new Pumpers come forward**, and welcome past Pumpers to come back, too. Please email the editor [editor@haylepump.org.uk](mailto:editor@haylepump.org.uk) or drop a note into Store28 (was Bigglestons) or Passmore Edwards Institute.

Graham, editor.

## **Café Riviere**

*Open all year*

*Take-away available*

*Located at Hayle Swimming  
Pool.*

*Visit us for late breakfasts,  
lunches, hot food, snacks,  
cream teas, hot & cold drinks.*

**Des Button**  
**SPRINGFIELD**  
**33 Clifton Terrace**  
**Hayle TR27 4BP**  
**ELECTRICAL**  
**SERVICES &**  
**SUPPLIES**

**01736 753211**



**PART P  
REGISTERED**



**ADVERTISERS!!**

Our new Ads guy is unable to chase around Hayle collecting advertising payments, so PLEASE drop cash/cheques into Store 28 (ex Bigglestons ) for the attention of Paul, or if you require other payment methods, ie standing order, BACS or advance block booking contact our treasurer, John Jansen, Tel. 01736 755148  
[johnjansen@hotmail.co.uk](mailto:johnjansen@hotmail.co.uk)

**HELP! THE HAYLE PUMP IS IN NEED OF SOMEONE TO HELP PAUL WITH THE ADVERTISING.**

**THIS INVOLVES LIAISING WITH ADVERTISERS, COLLECTING PAYMENTS AND HOPEFULLY CREATE THE ADVERTS.**

Contact Jeff 01736 752319

**Hayle Oral  
History Project**

**NEXT DEVELOPMENT**

Lucy Frears, coordinator of Hayle Oral History Project is working on a Project at Falmouth University to create a mobile phone App around Hayle Harbour. This will reach a wider public thanks to a Heritage Lottery Fund (HLF) "All Our Stories" grant. The smartphone App is based at Hayle Harbour's North Quay, which is being transformed through redevelopment. There is additional funding for another mobile experience in the area of the

**SimplyUnwind**

**Complementary Health Clinic**  
**6 Foundry Farm, Foundry Lane,**  
**Hayle**



**Kerstin Weber** Cert ECBS Dip ITEC CThA

**The Bowen Technique**  
**Deep Tissue & Holistic Massage**  
**Indian Head Massage**  
**Reflexology**

Call 01736 754429 or 07782541043  
[www.simplyunwind.info](http://www.simplyunwind.info)

Dynamite Works.

The free Hayle smartphone App will offer audio and visual experience as community or visitors wander around Hayle Harbour with their smartphones and headphones. GPS will trigger audio memories of the past, a fragmented story that moves between different people and different eras rather than a historical tour. The community can get involved in various ways during the development stage by testing the App and offering feedback and by testing other walks such as the World Heritage Site Hayle audio MP3 walk or those that are paper based such as Hayle Oral History Project's Harbour and Copperhouse Pool walk, Treasure Trails Hayle walk or the Discover Hayle map walk and sharing impressions with Lucy. If you have memories of the Hayle Harbour area from Copperhouse Pool to the beach and chalets or photos, please get in contact to have them recorded at

**hayle.history@btconnect.com**, call **01736 753962** or drop in to the Brewery Office on 1 Sea Lane and leave your details during Hayle Community Archive hours: Tuesday and Thursdays from 10am until 1pm.

Commenting on the grant Lucy said: "When I used memories to make walks in Hayle for the book, Churks, Clidgy & Doodle-Dashers. I wanted to use the actual history recordings gathered for Hayle Oral History Project, so we could hear the accents and stories rather than read them. That wasn't possible then but



**Designer Frames**  
**33% / 20% discount**

**Varifocals**  
**from £129 complete**

**Prescription Sun Spectacles**  
**From £59.90**

**Superlite Rimless Spectacles**  
**with 2 year anti-breakage**  
**warranty on frames and**  
**lenses – from £169 complete**

**Photochromic Promotions**  
**on Transitions/Kodak and**  
**Rodenstock lenses**



**Branches in Hayle & Penzance**

**18 commercial Rd      21 Alverton St**  
**Hayle TR27 4DG      Penzance**  
**Tel 01736 753145      Tel 0173 6366106**

**Www.keastopticians.co.uk**

this App will make that happen. I also want people in the community to be able to leave their own stories while participating, when their memory is triggered by the other stories and essentially co-author the App.”

Hayle Mayor Jayne Ninnes, said: “I congratulate Lucy. How great to stand on Hayle Harbour and look about you whilst hearing stories of those who lived, played or worked there. The stories people tell are vibrant, funny and poignant - the everyday lives of people who lived here before us is fascinating to those of us here now.”

now looking forward to the New Year, learning new songs and welcoming new members, so ladies why not come along to one of our rehearsals? You don't need to be a trained singer, you don't need to be able to read music and you don't need to audition; all you need is to enjoy singing. We have a very varied and inclusive repertoire and you will find a friendly group of ladies willing and able to offer support. All voices are welcome, but especially the lower ones. We also have an enjoyable social calendar: events have included a trip to Holland, a visit to Barnstable as guests of the Barnstable Ladies Choir, a very enjoyable auction of promises evening, and coming up a skittles evening. Do come along and see how enjoyable singing in a group can be. For further information ring

Ann on **01736 752335**  
or Geraldine on **01736 755162**

Looking for Health Options?  
**HOMEOPATHY**



Frances Karol BSc. DHMS MHMA  
**0777 436 2414**  
newlifepath@hotmail.co.uk  
Clinics located in Hayle and St.Ives

## **HEYL ST. PIRAN SINGERS**

Since the last edition of the Pump the choir has had a constant stream of engagements, including singing at the Camborne Tuesday Club and High Tea at the Praze Institute, taking part in an evening of music and song with the West Cornwall Concert band, as well as Carol Concerts at Ventonleague, Phillack Church and the W. I. Concert at Hayle Methodist Church. The choir is

## **THE KING GEORGE MEMORIAL WALK**

The walk will be **CLOSED** for Sewage works by SW Water between **11<sup>th</sup> February and 1<sup>st</sup> March inclusive, 24 hours a day, weekends included.**

The Pump is keeping fingers crossed that pedestrians and cyclists will still be able to use it, but look out for any warning signs and follow their advice.

# *The Feasible*

**Presently berthed at the Saltings Quay** in Hayle Harbour a ship named "Feasible" has a chequered history of 100 years of sailing. Built in 1912 at Aberdeen, final construction was completed at Lowestoft as a fishing vessel working around the UK and followed by migrating crews, fish packers and



families within the industry. In 1914, at the start of the Great War, the ship was commissioned by the Royal Navy to join patrolling and escorting vessels based in Dover and in 1915 was "fitted with wireless telegraphy". On April Fool's day 1916, Feasible helped out in a collision between two ships and engaged in towing a Norwegian vessel, but the tow parted and the crippled ship sank. On November, 24, 1917, with other drifters at sunrise around Goodwin Sands she engaged in battle with a German submarine U48 that was grounded on the sands, the drifters opened fire in the English Channel with return shots from the sub,

# Cspray

**Baths and Kitchens**

**Bath Resurfacing  
and Repairs**

---

---

**Pressure washing  
Domestic and Commercial**

Patios ● Driveways ● Paving  
● Decking ● Walls

- no area too small -

**Contact for details:  
01736 756077**

## The Sleepy Hollow

Your Alternative Gothic Gift Shop

Family-run Gothic Gift Shop

Selling a wide range of Gothic gifts,  
candles, incense, clothes and more

Incorporating:

Sleepy Hollow Herbs,  
Medicinal & magical herbs,  
Tissaries, and

Hand-blended incense and oils.

Visit our shop at Unit 3 - Pratts Market,  
Chapel Terrace, Hayle TR27 4AB

**07747 078274**

[www.thesleepyhollow.vpweb.co.uk](http://www.thesleepyhollow.vpweb.co.uk)

ending with the surrender of the German crew. It is understood 17 of the sub crew survived, with 19 dead. At the end of the war, Feasible was returned to its owners in 1919, and once more continued normal voyages around the coasts of Britain and abroad.

The Western Telegraph newspaper on Wednesday January 1st 1936 reported crew members battled for their lives in a violent storm for 13 hours in heavy seas, losing part of the wheelhouse and compass. Feasible signalled for help and was towed into Milford Haven resulting in tragedy with crew member Edward Halliday 27, being lost overboard and drowned.

With the start of the Second World War, she was enlisted again by the Royal Navy and converted to a minesweeper at a hire rate of £27 per month, and took part in the Dunkirk evacuation in 1940. After the war she was returned to her owners and in 1946 resold and registered in Norway re-named "Meloy" and ended up many years later found laid up in Veafjord, Norway.

The Meloy was sold to new owners and returned to its original name "Feasible" with restoration of a diesel Rolls-Royce engine and moored in Penzance Harbour.

**Tom Mitchell**

\*\*\*\*\*

**Barry's bits...**

**Did you know the camel hair brush is actually made from squirrel ?**

## **WALKERS ARE WELCOME HAYLE**

Following on from the article in the last Pump, WAW are still looking for new members, especially committed walkers and businesses.

The next ordinary meeting is on 6<sup>th</sup> March at Hayle Community Centre at 7pm, and please note advanced warning that the ANNUAL GENERAL MEETING

Will be on 15<sup>th</sup> May 2013 at 7pm Hayle Community Centre.

[www.walkersarewelcome.org.uk](http://www.walkersarewelcome.org.uk)

John Nunn 01736 759686

[john@gjash.co.uk](mailto:john@gjash.co.uk)



**MOUNTAIN - ROAD - BMX SPECIALIST**

**Bicycle Sales and Repairs**

**Tel: 01736 753825**

36 Penpol Terrace, Hayle TR27 4BQ  
[www.haylecycles.com](http://www.haylecycles.com)

## **Praise Hayle Male Voice Choir**

The choir is continuing to keep busy with a variety of musical activities. Recent engagements have included a triple concert in Newlyn with choirs from St Buryan and Newlyn, a joint concert with the Heyl St Piran singers at Pendeen to mark the anniversary of the church as well as a wedding at the Tregenna Castle

Hotel in St Ives. The choir had a busy schedule approaching Christmas which included services at Phillack and Ventonleague as well as performing at various venues in the local community.

The choir would be very pleased to welcome any new members who would be interested in joining them.

Rehearsals take place every Tuesday evening in Hayle.

Please contact **01736 752478** for further information."

## **Mike Preece**

Hospital car service  
T.A.P. Registered  
All Medical Journeys

Tel **07828 208206**

E,mail [mike.preece1@live.co.uk](mailto:mike.preece1@live.co.uk)

## **MILLPOND UPDATE**

### **'The Prodigals Have Returned'**

They glided in majestically, landing on the Inner Pool. Freya and Odin are home again after nearly four months away on Copperhouse Pool, but they were not the only arrivals. Loki, our Indian Runner, and Beau, our long tailed drake, were also absent for a while. Both have now returned to the Millponds, together with three friends. Ruby and Rosie are 'Rhone' or Rouen ducks. These rather elegant, rich chestnut-brown females are believed to have

originated in the Rhone area of France before becoming a popular breed in England. The third arrival really was a complete surprise and no stranger to the ponds.

Snowflake, our white call duck left us over a year ago, but where he went no one knew, and his home-coming is a bit special to the Millponders.

Wherever they went, they are all doubly welcome back into the 'Heinzers' family.

A young ring-billed gull, long-tailed tits and goldcrests are among our more recent winter visitors. Many thanks to all our Millponders, who put out food for our birds, keeping them healthy during the worst of the winter.

At long last we have got rid of the

## **THE FARM SHOP**

31 Penpol Terrace, Hayle  
TR27 4BQ

**Open - 6 days a week**  
**8am - 5pm**

### **FOR ALL YOUR LOCAL PRODUCE**

Fruit, vegetables, plants, flowers,  
free range eggs and  
Cornish potatoes.

### **NOW IN**

Primroses, local daffodils  
and Valentine Flowers.

# The Gallery Coffee Bar

Warm & welcoming

With comfy indoor & courtyard seating

Pop in and see us for :

- \* Great Coffee
- \* Tea Pig — Herbal Infusions
- \* Delicious Home Made Cakes
- \* NEW..All Day Breakfasts
- \* Warm Bacon Rolls served all day
- \* Soups, Jacket Potatoes, and Paninis.

Now selling a range of affordable gifts

1 Chapel Terrace, Hayle  
(by viaduct) 01736 756829

**Dogs are Welcome**

# BARTON print

Tel: 07799 411525  
Fax: 01736 757022

Quick Reliable General  
Printing Service

JUST A SMALL SELECTION OF THE SERVICES WE OFFER!

- BUSINESS CARDS
- COMPLIMENT SLIPS
- NCR PADS / SETS
- LEAFLETS
- MENUS
- NEWSLETTERS
- ENVELOPES
- LARGE FORMAT PRINTS
- LETTERHEADS
- OVERPRINTING
- RAFFLE TICKETS
- B/W COLOUR COPYING

COMPETITIVELY PRICED

1 Turnpike Road, Connor Downs

Telephone 07799 411525 01736 754220

causeway across to Duck Island and I believe that I may have Cormac to thank for taking it away just in time before the very heavy rains came.

That allowed the full force of the water to flow properly between the Island and the mainland, taking silt with it and restoring a more normal flow pattern again. If the causeway is not replaced the improvement will continue and the Island be left as a roosting and nesting area.

Finally, I am most grateful to the Editor for reminding me that we do need funds to restore the ponds to their iconic beauty. We have been trying to find a benefactor for many years, so perhaps he can recommend a suitable candidate. We wait with much interest.

**Georgina Schofield**

Volunteer Wildlife Warden

## MILLPOND NEWS

**The Millpond at Foundry is one of the town assets that for a long time were leased to Penwith District Council and latterly Cornwall Council, but that Cornwall are now 'handing back' to Hayle Town Council. We are bargaining hard for these assets to be "brought up to scratch" before being handed over but there are no guarantees. We are in a "phasing in" process over three years, but soon Hayle will have to pay for all care and management, from our share of the money Hayle gets from the Council Tax. Other properties being "handed back" include The Plantation**

(Carnsew Hill Fort) opposite Jewsons, King George V Memorial Walk, Station Hill gardens, and the Recreation Ground. It's been estimated that this could all cost Hayle through its Town Council around an extra £100,000 per year. Anyone, with any viable ideas for finding funding to help with these assets is asked to get in touch. **Graham Coad**, Chair, Amenities Committee Hayle Town Council.

## ***HAYLE AND DISTRICT LIONS CLUB***

**We would like to thank all the people** of Hayle for supporting us in our fund-raising activities throughout 2012..

Monies raised are used to help individuals, groups and local projects in Hayle, eg: Hayle in Bloom, Hayle Day Care Centre, St Elwyn's Church, St Julia's Hospice and goal posts for the Recreation Ground, just a few examples of donations made in 2012.

Our August "Fun Day" was brought back and was a great day out for all the family, hopefully this will continue in 2013

December was a particularly busy month for us, firstly helping Santa in his Grotto at Foundry Shopping Village every Saturday afternoon, our thanks to the Market Traders for their support.

We would also like to thank Tesco,

## **CLEANER CARPETS Cornwall**



- ✓ free quotes
- ✓ no hidden charges
- ✓ non toxic

- Covering Lands End to Truro
- Over 10 years experience
- Fast friendly service

For further details please contact Pete Williams on 07901 803493 or email [pwpetewilliams@googlemail.com](mailto:pwpetewilliams@googlemail.com)

## **bean belt**

Speciality coffee, fine tea and stylish kitchenware

**Coffee beans freshly ground  
Selected loose leaf and packaged teas from small speciality producers  
Essential kitchenware, cookware and gifts**

We are also continuing to sell all the essential homewares and hardware found in the store under previous ownership including KEY CUTTING with brand new machines and extensive blanks

**28 Penpol Terrace  
Hayle TR27 4BQ  
[www.thebeanbelt.com](http://www.thebeanbelt.com)**

Open Monday to Saturday 9.30 - 6.00

# ANGOVE SPORTS

**COPPERHOUSE,  
HAYLE**

**TEL.: (01736) 752238**

For all Sports Equipment,  
Clothing, Footwear and  
Fishing Tackle

Rackets Repaired and  
Restrung

**PASSMORE EDWARDS  
INSTITUTE**



## MEETING ROOMS FOR HIRE

Hayle's Village Hall  
has a variety of rooms  
for hire, suitable for  
2 to 60+ people.

For more information visit:  
[WWW.HAYLE-PEI.ORG.UK](http://WWW.HAYLE-PEI.ORG.UK)  
Or call: 07851-183775

13-15 Hayle Terrace, Hayle, TR27 4BU  
Charity Number 268429

Carbis Bay, Lidl Supermarket, Co-op Supermarket and Hayle Retail Park for letting us fundraise in their Car-Parks - unfortunately Santa with his sleigh was unable to attend all the venues due to adverse weather conditions

Our Christmas Concert in St Elwyn's Church, on Sunday 16th December was a great success, it featured Bodriggy Academy Choir, Mounts Bay Mixed Choir and The Matthews Family. So a big thank you to everyone that came on the night. A cheque for £200 was presented to the Church.

We are busy now thinking up ways to raise more funds in 2013 - if you have any ideas or would like to join Hayle Lions, we meet the 2nd and 4th Tuesday of the Month at 7.30pm in The Passmore Edwards Institute, please come along, you will be made to feel most welcome. Or ring our President **David** on **01736 753811** for more information.

Thank you again for your support,  
Maureen George, Secretary.

## ***Footbridge over Penpol Creek***

You may remember that part of the approved planning application for the new supermarket due to be built on South Quay was a footbridge across from the car park on the quay to Penpol Terrace shopping area to give easy access to existing shops. Other bodies and groups made representations that a better location

would be at the seaward end of South Quay rather than the middle, and the planners directed ING to carry out public consultation at their own expense to gauge public feeling. This was carried out in December 2012 with an exhibition and feedback forms at Passmore Edwards Institute, Hayle, with the exhibition material continuing to be exhibited at

the Community Centre, Queensway. Responses were also welcomed by letter or email, consultation closed at 5pm Friday 11<sup>th</sup> January. Since then there have been additional lobbying and concerns from individuals and groups raising questions and issues. Cornwall Council Planning officers are following up all the issues raised with relevant council departments and agencies and are preparing a draft report responding to and answering all issues and including the results of the formal consultation. It is hoped that this will come before Hayle Town Council at one of their meetings in February (7<sup>th</sup> or 21<sup>st</sup>) for debate and any resolutions or comments, which will then finalise

## **P.D.H Builders & Roofing**

High Quality Guaranteed Work

Contact: Paul Moyle

**07989 075517    01736 719469**

5a Bodriggy Street, Hayle TR27 4NB  
pdhbuilders1@hotmail.co.uk

FOR ALL OF YOUR BUILDING REQUIREMENTS

# **Computer / Laptop Problems?**

I can restore your computer or laptop to full working order  
for a fantastic price

## **NO CALL OUT CHARGE**

Professional repairs and maintenance of  
full systems and networks

Call today for a FREE no obligation quotation

**PC REPAIRS • PC NEW BUILDS • PC REBUILDS •  
PC UPGRADES • PC TRAINING • DATA RECOVERY •  
NETWORK INSTALLATION & MAINTENANCE**

For a prompt and reliable service  
call Tim Cogher at TeeCee Tech today



**07730 283433**



**01736 850798**

the report which will be used by Cornwall Council to inform them before their binding decision. This is in line with the usual planning procedures as this is still a planning matter.

Hayle Town Council meets in the Community Centre at Queensway at 7.15 for a public participation period before the formal meetings at 7.30, public welcome.

Graham Coad, Deputy Mayor.


## CHIROPRACTIC SCHEME: IN SUPPORT OF CORNWALL HOSPICE CARE

Staying in peak condition can feel expensive and time consuming. But





if you do have a niggle, sports injury or need advice on how to rejuvenate your body and mind - now is the time to contact the highly qualified Practitioners at Cornwall Chiropractic



Clinic - who are providing a unique, affordable solution through their imaginative charitable scheme. Under the scheme, each practitioner donates a number of treatments each month to the public for a minimum £5 donation; which goes to Cornwall Hospice Care. You have an amazing opportunity to sample new treatments - not only chiropractic healthcare but also other specialist treatments including sports massage, holistic therapies, podiatry and chiropody and diet and nutrition - for a minimum donation of £5. Treatments at Cornwall Chiropractic Clinic normally cost up to £45, so by giving a bit more than the minimum, you could still save a lot! Soothe your body and mind; feel good in the knowledge that your donation goes towards Cornwall Hospice Care, as it continues to provide its expert care for people living with life-limiting



**CORNWALL CHIROPRACTIC CLINIC**  
— maintaining your lifestyle —

**Now Available at the Clinic**

Chiropractic	Sports Injuries
Chiropody/Podiatry	Hypnotherapy
Holistic Therapies	Acupuncture
Diet & Nutrition	Pilates

Tel: 01736 759088  
[enquiries@cornwallclinic.co.uk](mailto:enquiries@cornwallclinic.co.uk)  
[www.cornwallclinic.co.uk](http://www.cornwallclinic.co.uk)

21 Foundry Square, Hayle, TR27 4HH

illnesses - completely free of charge. Cornwall Hospice Care, which incorporates St Julia's Hospice in Hayle and Mount Edgumbe Hospice in St Austell, provides the only adult hospice care within the county. Cornwall Hospice Care receives limited government funding, so it relies on the ongoing generosity of the local community. "Those of us who work in the local community have a vested interest in these crucial services; many of us may one day need the support provided by Cornwall Hospice Care." said John C Tillyard, Cornwall Chiropractic Clinic founder. Sarah Newton, Cornwall Hospice Care Community Fundraiser added: "In such a challenging economic climate it is fantastic that the practitioners at Cornwall Chiropractic Clinic are engaging in such an innovative way of fundraising - which also benefits people across Hayle who can access treatments at the clinic at an accessible price. It is vital for the future of the charity to forge relationships like this with local businesses. We are very grateful for the clinic's support". For more information on the scheme or to book an appointment ring **01736 759088** or [enquiries@cornwallclinic.co.uk](mailto:enquiries@cornwallclinic.co.uk)

---

**Barry's bits...**

***Did you know that the colour of the Black Box in a commercial airplane is actually orange ?***

## **Sarah Lane**

BA PGCE TEFL

### **English Tuition**

*Primary, Secondary, Adults  
one - to - one or groups.*

Do you need help preparing for an exam; with reading or spelling; speaking in public; writing business letters ?  
Is English your second language ?

First half session free.

Tel 07952599798

e-mail [sarahlane.gb@gmail.com](mailto:sarahlane.gb@gmail.com)

### **www.kleeneze-hayle.co.uk**

All your favourite hard to find Homecare Health products and quirky gadgets

### **NOW ONLINE**

This 88 year old British catalogue company has joined the Web!  
Order online but still receive the friendly free delivery and pay on arrival service from your local distributors

*All online orders will receive a FREE Mystery product sample!*

See you soon Nick & Jan Pincott



## ***Hayle Day Care Centre Christmas Lunch 2012***

**Hayle Day Care Centre held their Christmas Lunch on Tuesday 18<sup>th</sup> December.** The room was transformed into a bright Dining Hall for 120 clients, guests and volunteers.

Drivers Richard and Peter were busy collecting clients from Hayle, St Ives and villages assisted by Tony and Angie; cooks Kathy and Simon with other staff and volunteers putting the final touches to the banquet.

Overseeing was the Manager Lesley Channell who had been organising the event down to its last cracker and mince pie. After Christmas lunch with all the trimmings they were treated to Strawberry Pavlova that melted in the mouth. Santa was not available but we were able to

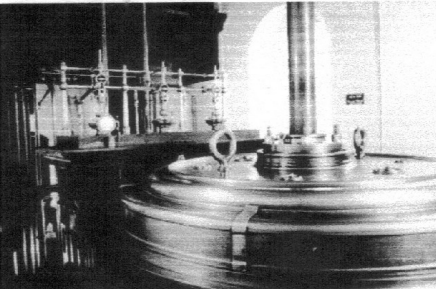
connect live with Radio Cornwall's Laurence Reed. The Manager and our Chairman and a Vice President Hamilton Hawkins explained everything. The oldest client was over a hundred years old but due to the noise in the hall she was not able to have a real conversation with Laurence so those present wished Laurence Reed a very happy Christmas in a strong voice heard all over Cornwall. After the meal we were entertained by a young lady called Ellie who enthralled with songs from shows and a few Christmas carols. Chris Ryan Trio continued into the afternoon with music and songs bringing to an end a superb day.

The Staff and Trustees and clients would like to thank the following: Lesley and all her staff, the volunteers who give up so much time and effort over the year, Bruce of Penpol The Farm shop for all the vegetables needed, Ready Fresh of

North Quay Hayle who prepared the vegetables. Scorse Meats for 50% of the turkeys, Robot Coupe who provided free, a valuable demonstration vegetable processor that has enable the kitchen staff to become more efficient in the preparing of daily meals and many other members of the Community who have so generously supported the Day Centre Christmas Lunch.Finally as a Christmas Present, Hayle Rotary, Hayle Lions and Hayle Inner Wheel Clubs have generously provide the funds for a new industrial Microwave that will assist in the daily process of providing in excess of 60 freshly cooked meals. David Raymer, Chairman, Hayle Day Care Centre Trust. Commercial Road, Hayle, TR27 4DE 01736 755000

## The Grand Junction 90 inch engine

Readers may be interested to



know that at the Kew Bridge Steam Museum, there is the largest working beam engine in the world. It is 90inch in diameter and was built by Sandys, Carne & Vivian of Copperhouse Hayle and was the

## Do you enjoy singing? LOCAL VOCALZ!

A lively adult choir for the West Cornwall area, singing a wide range of music.  
Mondays, 8.00 pm to 9.30 pm at Passmore Edwards Institute, Hayle  
why not come along to a rehearsal?

£3.00 per session  
Music reading desirable but not essential - we'll teach you!

**Details 01736 759944**

[www.localvocalz.co.uk](http://www.localvocalz.co.uk)

## MUSIC LESSONS

Piano, keyboard, organ, singing and theory of music

♪ Beginners to diploma level

♪ Adults and children

♪ Examinations or fun!

♪ No group tuition whatsoever — strictly "one to one" basis

NEIL SHEPHERD

**Details 01736 759944**

[www.neilshepherd.org.uk](http://www.neilshepherd.org.uk)

first engine built in Cornwall specially for waterworks duty.

In 1976 when it was being restored , presenters from the Blue Peter TV programme climbed into the cylinder through the exhaust valve and held a tea party underneath the piston, it that huge!

The engine was built in 1846 has a 90inch diameter, weighs 32.4 tonnes and was last worked in 1943 ,just short of a hundred years great service.

The museum has the largest collection of Cornish engines in the world and there is a special weekend on 23<sup>rd</sup> and 24th February - if you are in London it would be well worth a visit. Thanks to Dr Trevarthen, whose great great grandmother has a connection, for bringing this to our

notice. So not to be missed if you are a steam buff !

Jeff Turk

## **Wildlife Wonders**

**Jon Tremaine is a Cornish wildlife artist** who has many in awe of his meticulously crafted drawings. In the past five years his art has extended through the Duchy and beyond, his talent capturing the attention of all generations.

Just under twelve months ago Jon moved into his studio at the Old Forge, Lelant: "Being on the edge of the Hayle Estuary provides me with further inspiration for my drawings" says Jon.

New businesses often find it hard to survive but demand for Jon's work remains high.

A look at his drawings show beautifully drafted pictures of wildlife common to the Cornish countryside. On closer inspection the eyes are greeted with an explosion of intricate detail. Within each drawing is a riot of fauna and flora vying for your attention.

Jon's inspiration came from his late brother David, who created a picture of a tree containing interlinking abstract images. "Using this idea I applied it to nature." Jon says. "I think this gives it an original style. Jon has received no college training.

*Cabinetmakers & Joiners.*  
**JOHN ANDREWS**  
*Traditional Bespoke Woodwork*

**Traditional Windows  
Doors & Staircases  
Hardwood or Softwood  
Entrance Gates  
Memorial Bench Seating  
Joinery Fitting Service**

**07765 341 616  
01736 741 064**

Everything is self-taught, his only formal art qualification is a CSE from school, (Grade 1 of course.)

In 2007 a friend who worked at Truro College, shared an unfinished picture of a heron with the art department. "Without exception they were blown away by the concept and fine detail." Jon says, "This gave me confidence to take a leap of faith and give up my old job"

The drawings are labours of love and can take a hundred hours to produce. This is done in sittings of two to four hours. Jon uses an Isograph pen with Indian ink. What is Jon's latest project? "At present I am working on "The Badger". I am about fifteen hours in with about another ninety to go. It should be completed by the end of

February."

As his art becomes more widely acclaimed those with earlier limited editions will see an increase in their value, whilst those buying today can consider their work of art an investment as well as a delight for their viewing.

A visit to his studio is free. Opening hours are 11.00 to 16.00 Monday to Friday. Here you can buy originals, prints and cards. Time it right and you may also get to see this talented, local artist at work.

Jon Tremaine, Wildlife Artist Studio, The Old Forge, Hayle TR27 6JG Tel: 07966 406474 Opening Times: Monday to Friday - 11.00am to 4.00pm [www.jontremaine.com](http://www.jontremaine.com)  
Diana Miners

# CLIFFORDS

## Plumbing & Heating

Boiler Changes - Full central heating - Servicing - Landlord Certificates  
Dripping taps to complete bathrooms - All plumbing work undertaken  
Free quotations

Local, Reliable, Clean and friendly service

**01736 755170**

07761 938183

Fully Qualified, Gas safe Registered and Water Industry Approved

[www.waterworkscornwall.co.uk](http://www.waterworkscornwall.co.uk)





## **POLICE CONTACT NUMBER CHANGE**

Until recently, you could contact the police for non-emergency reasons on either, 08452 777444, or a more easy to remember number of **101**. Now, from Sunday 2nd September, the 08452 number will be switched-off as a means of contacting the Police. If you do happen to call this number, you will just hear an answering machine message asking to use **101**. You must still use **999** in emergencies. Furthermore, you can email the Police with non-emergency crime on [101@devonandcornwall.pnn.police.u](mailto:101@devonandcornwall.pnn.police.u)

## **THANK YOU from the SISTERS**

Leaving Hayle in December was a very sad time for us – three Sisters of the Congregation of the Daughters of the Cross.

Over 110 years ago the first Sisters arrived at the Downes on Foundry Hill. Following a local appeal St.Michael’s Hospital opened in 1914 and during in the 1930’s St.Joseph’s School opened in the convent grounds, (some ex-pupils still live in the town. )

When the NHS commenced the sisters were advised to stay independent, this continued until mid 1999. The School of Nursing opened in 1940 using Bospowes, (home of Henry Jenner, first Bard of Cornwall,) closing in 1979. The Health Authority then requested the site provide Cornwall’s response to the Year of the Disabled Person. Donations were matched by them, the first consultant in rehabilitation was employed for the Duchy, and Marie Therese House opened in 1983 (the name of the Foundress of the Congregation being chosen from several proposed). The sisters were next

Tel: 01736 - 757818  
Mob: 0779 263 2635

# Nick Farrar

## Property Maintenance

Windows-conservatories - Kitchens - Carpentry - Fibre Glass Flat Roofs

approached to consider a pilot to ascertain the need for Hospice Care beds in the west, expenses paid by a trust for three years. Thus St.Julia's 'the hospice within the hospital' started in 1986, supervised by Macmillan Nurses, supported by Bodriggy Clinic with initial Consultant cover from Mount Edgumbe. It proved a need and, thanks to the determination of local fund-raising groups, in 1999 the present building was opened by HRH Princess Anne, and extended last year by Cornwall Hospice Care.

**BIZ AND BYTES**

**07974 647524    01736 755971**

If you require computer assistance, either training or to resolve a problem then give us a call. Visits arranged to suit you.

Looking after the home user and small business.

**WEBSITES • BROADBAND • TRAINING •  
COMPUTER SUPPLY • TYPING**



[www.bizandbytes.co.uk](http://www.bizandbytes.co.uk)  
[enquiries@bizandbytes.co.uk](mailto:enquiries@bizandbytes.co.uk)



News we were leaving spread; we thank those friends, volunteers (current and past), who came to reminisce and others who arrived to thank us, either for their birth in St.Michael's or for the treatment they had received, some as far back as the 1940's . We were invited by so many groups for farewell meetings, but the kindness of Churches Together, the Council and Day Centre in hosting a service and reception provided both a joyous and sad occasion. We will never forget the tributes paid to our

**WEST CORNWALL  
MOBILE  
FOOT CLINIC**

**For the professional  
treatment of:**

**Corns & Callus**

**Diabetics**

**Verrucas**

**Athletes Foot**

**Thickened Nails**

**Fungal Infections**

**Ingrowing Toe nails**

**Can't cut your own nails**

**All in the comfort in  
Your own home**



**Peter Williams**

S.A.C.Dip FHPT/FHPP

**Tel: 01736 751752**

**Mob: 07901 803493**

**Evening and weekend calls available  
[pwpetewilliams@googlemail.com](mailto:pwpetewilliams@googlemail.com)**

predecessors. The presentation of a Hayle plaque to each of us by our Mayor Jayne Ninnis was a humbling experience, but one which we shall each treasure.

On behalf of all the Sisters who have ever lived at St.Michael's, thank you. We three, Sr.Rose, Sr.Imelda and Sr.Maureen pray that the proposed developments for both North and South Quays will result in prosperity for everyone in Hayle.

Sister Maureen McNally

\*\*\*\*\*

*Children do make a difference to a home -but it can be repaired !*



**National Animal Welfare Trust  
March Fete.**

***There will be a fete on Sunday 3<sup>rd</sup> March at the Wheal Alfred Kennels from 11am – 3pm. There will be a dog show, stalls homemade cakes and much more. Come and enjoy yourself and help us at the same time.***

# M J MARINE ELECTRONICS

For all your marine electronic installation supplies repairs and service

Agents for Furuno  
Standard Horizon Icom  
Simrad & Lowrance

**Unit 4 Albert Pier  
Penzance TR18 2LL**

**01736 330200  
07971 281 888**



**Join us on board Penzance's finest angling boat  
01736 330200 or 07971 281 888  
[www.penzanceboatfishing.co.uk](http://www.penzanceboatfishing.co.uk)**



## **Churches Together Easter Services**

### **Godrevy Team Ministry**

#### **Easter Sunday**

Dawn Service at the Towans at  
6am followed by breakfast at  
Phillack Church Hall.

8am at St Erth

9.30am at St Erth and St Elwyn's

9.15am at Phillack

11 am at Gwithian and Gwinear

6pm Team Service at Gwinear

#### **Salvation Army**

Good Friday – 10.30am

Easter Sunday- 11am.

#### **Light and Life Church**

Good Friday 10.30am

Easter Sunday 10.30am

at Hayle Community School.

#### **St Joseph's R.C.Church**

Easter Sunday 11am at St  
Joseph's.

#### **Methodist Church**

##### **Easter Sunday**

**Hayle** – 8.30am Easter  
Communion followed by  
breakfast.

10.45 Easter Service

##### **Ventonleage**

Easter service at 11am

##### **Angarrack**

Easter Service at 11am

##### **St Erth**

Easter

Service at 11am

## **STAINER'S CRUCIFIXION**

A Reminder....Rehearsals are starting very soon for Stainer's Crucifixion which will be performed on Palm Sunday 24th March at St. Bartholomew's Church Porthleven and the following evening in St. Elwyn's Church, Hayle.

Rehearsals as follows:

**8th February** St. Elwyn's, Hayle, 2.30.

**22nd February** Porthleven

**8th March** Hayle

**15th March** Porthleven

**22nd March** Hayle.

Music will be provided. Come and take part in this famous choral work and enjoy a wonderful experience. For further information please telephone **01736 752335** or just turn up at rehearsals. Ann Birch

## **DO YOU KNOW WHAT'S HAPPENING AT YOUR LOCAL VILLAGE HALL?**

I have recently become one of the trustees at the Passmore Edwards Institute having grown up in Hayle and returned five years ago to be back near to my family for the birth of our first son. I have developed and

run my own business for the past four years 'Love Baby Yoga' teaching my Pregnancy Yoga, Baby and Toddler Yoga classes and Birth Rehearsal Courses at the Institute. My return back home to Hayle from living overseas was perfectly timed with the beautifully renovated building. I felt very proud to be able to offer my work from such a stunning venue and over the past four years I have watched the building come back to life with a strong variety of classes and courses now on offer to Hayle and surrounding areas residents. Now caretaken by the warm and friendly John and Tracey Cooper the Christmas Fair was a credit to their hard work. Do take a look at the notice board the next time you are

passing to see the wealth of offerings the Institute has on each week and here's to enriching lives in our Hayle community further in 2013.

Mandy Adams

[www.lovebabyyoga.co.uk](http://www.lovebabyyoga.co.uk)

## *Older drivers !*

*It is about time the authorities did something about older drivers on our roads.*

*For far too long older drivers have caused havoc as they hog the left lane, stick to the speed limit ( even the road work limits ) and stop at stop signs , causing great inconvenience, and often preventing others from doing from whatever they like. Another major concern is ,*

## W J WINN FUNERAL DIRECTORS

We are here to help you 24 hours a day

- Funeral Pre-Payment Plans
- Memorials
- Private Chapels of Rest

### **WJ WINN**

Trenwith Terrace  
St Ives TR26 1QE

**Tel: 01736 793029**

### **WJ WINN**

69 Fore Street  
Hayle TR27 4DX

**Tel: 01736 752124**

### **CHARLES BRYANT**

North Road, Goldsithney,  
Cornwall TR20 9JY

**Tel: 01736 710318**

### **MARAZION FUNERAL SERVICE**

Back Lane, Marazion, Cornwall TR17 0HE

**Tel: 01736 710318**



Part of Dignity plc. A British Company.



by avoiding fines and by penalty points, they are not doing their bit for the revenue of our state, and are therefore placing a further burden on our younger drivers.

Until older drivers can prove that they are proficient at weaving in and out of traffic, driving whilst texting, tailgating, using drugs or doing burn-outs, then they should be banned from holding a licence.

I rest my case.  
**Barry Thomas**

## The Jubilee Path

Hayle Town Council were considering something useful and lasting for a Jubilee Project at the

same time as the overgrown state of a local path arose.

The path, officially "Footpath Hayle



51" linking the east of King George V Memorial Walk with Lethlean Lane and the Recreation Ground, is part of the historic Hayle Railway. It ran from

### WONDERFUL WILDLIFE AND INDOOR PLAY AT PARADISE PARK!

Cornwall's award-winning wildlife sanctuary with penguins, otters & farmyard friends, plus fantastic JungleBarn indoor play.

Open every day at 10am



- Home Cooked Roast Lunches Tuesdays, Thursdays and Sundays with new loyalty card offer
- Themed birthday party rooms
- Park & Gift Shop open 10am - 3pm
- JungleBarn open 10am - 6pm
- Return Tickets £3.50

**FOR NEWS AND SPECIAL OFFERS JOIN US ON FACEBOOK**



Paradise Park, Trelissick Road, Hayle  
Open every day at 10am Infoline: 01736 751020 [www.paradisepark.org.uk](http://www.paradisepark.org.uk)

# **HANDYMAN**

**EXPERIENCED & RELIABLE**

**“NO JOB TOO SMALL”**

Completing all those jobs  
you've been meaning to do!

Painting / Decorating  
Repairs / Flat-pack Assembly  
Fencing / Sheds

**CONTACT**  
**RIK HARVEY**  
**01736 752811**

# **PLANTECH**

**THE FRIENDLY RELIABLE SERVICE**

- Lawns cut and borders weeded
- Hedges trimmed
- House, garden & building waste taken
- Garden clearance work
- Gravel, sand, topsoil delivered & laid
- Garage and loft clearances
- Free no obligation quotes

(Tel) 01736 754401 / 07979546434



Harvey and Co. (now Jewsons) around Foundry Square up the bank of Penpol Dock opposite Penpol Terrace, across to “Undercliff” (now the Memorial Walk) then eastwards over to Angarrack and on. While much of the route in Hayle is clean clear and used as a foot route, the part across Wilson’s Pool Site of Special Scientific Interest (SSSI) has been neglected and grown over, so it was only passable single file and very narrow in places. It’s small historic railway bridge, a listed structure, had one side completely



obscured with undergrowth; unauthorised paths had formed through use down into the protected SSSI salt marsh.

The Council formed a working party to look at getting the path cleared, but found we could not do it during bird nesting or migration times and

after research, liaison with official environment and heritage bodies and gaining the necessary permissions we were set to go ahead in December 2012, with more preparation work as we go to publication.

The path has been cleared and widened to at least 2 metres, and undergrowth removed to show its original state as a historic rail embankment, and open views to Phillack and across the SSSI to Hayle

It will next get a compacted “Three quarters to dust” surface as on joint cycle ways like the Camel Trail, Tarka Trail in Devon, and others nationally. Though it is a “footpath” we plan a year trial period as a dual use route shared with cyclists as it is

wide enough and of a proper standard. There will be approved barriers each end, and suitable signs., and the bridle will be repaired and restored.

Motor vehicles will not be allowed, and no horses (as hooves cause expensive damage to the surface). This will be a “Disabled Friendly” alternative for a circular walk around the Pools to appreciate the historic heritage of the path and the natural SSSI Environment. Although some complained, many more people have been praising the works, looking forward to completion and using it already!

\*\*\*\*\*

*Did you know the Purple Finch is actually crimson ?*



**PHILPS**  
FAMOUS PASTIES OF CORNWALL

Philps Bakery baking Cornish pasties 7 days a week.

Why not send pasties to relatives out of the county using our pasties by post service?

Please visit our website

[www.philpspasties.co.uk](http://www.philpspasties.co.uk) or call us on 01736 755661.

## Council C



***Due to illness through the st Hayle Town Council we apologise, but there is no Council Corner for this issue. If you have any questions about Council issues please phone the office on***

**01736 755005  
Deputy Mayor.**



**David N'jie**  
PAINTER & DECORATOR

07944 156995 01209 831397

dn-jiepainter-decorator@hotmail.com  
Trethannas Cottage, Praze-an-Beeble  
Camborne TR14 0LH



## Local Vocalz

**The last few months** have been really busy. The choir currently has 75 members, almost the maximum. Although a waiting list is in operation, we would always accommodate one or two additional gentlemen. The Men's section of the choir has grown to 18 singers which

is extremely healthy but we'd still like

an extra tenor or two.

The autumn term began with a concert at Porthleven Chapel as guests of Porthleven Town Band for a joint concert to be repeated in summer in Hayle and a return fixture at Porthleven at Christmas 2013. Next on the agenda was a "Last Night of the Proms" with our sister choir, Laudate, to mark the last night of the St Ives September Festival. The concert was repeated a month later in St Mary's Church Penzance. We were accompanied for these two concerts by principal accompanist Peter Luing and Luke Bond, Organist and Assistant Director of Music at Truro Cathedral and an extremely fine player. The St Ives concert was followed by a party at "The Italian Kitchen" with dancing until the early hours.

After a half term break, the choir competed in Camborne Festival, winning the "Open" Mixed Voice Choir class, defeating friendly rivals Laudate! It was then straight into preparations for our three Christmas performances. The first of two "Christmas Cracker" concerts was at Falmouth Methodist Church where the choir joined the newly formed Falmouth Vocalz. The two choirs then joined forces again for a Christmas concert in Truro Cathedral with an audience of around 600 people which was a great experience. The second "Christmas Cracker" concert was held at St Mary's Penzance. The term ended

with a social evening of drinks and nibbles and a rousing sing-song at the Old Quay House. A Curry evening was held at a Balti House in Camborne during the Christmas break and a post-Christmas party and meal is being held at the Old Quay House in late January too. The choir is now learning new music to add to the repertoire in readiness for another French tour in early May when we visit Quimper, Quimperle, Morhiban Peninsula and Vannes. If you belong to a local church or charitable organisation and would like to book Local Vocalz for a performance, please do get in touch with Neil Shepherd on **07950 585787**. His e-mail address is [neilshepherd@yahoo.co.uk](mailto:neilshepherd@yahoo.co.uk) The choir website can be found at [www.localvocalz.co.uk](http://www.localvocalz.co.uk)

## **EAST QUAY PARKING. NEW REGULATIONS**

### **Hayle Harbour Traffic Management.**

Following complaints from harbour users regarding unregulated parking on East Quay, which is restricting access to vessels and that of delivery vehicles, the harbour authority has taken the decision to bring in a local parking enforcement company Llawanroc to manage the problem.

## **Keeping Fit Can Be Fun!!**

**Mon 10 am Circuit  
training for over 50s**

**Thur 10am Extend  
Movement to music over  
60s at the Passmore  
Edwards Institute**

**Wed 2pm at  
Leedstown Village  
Hall**

**Start the week feeling  
good!**

**Sylvia 01736 757560**

**X**EXTEND

the magic of movement to music



### **NORTH WARD**

John Pollard

[www.djpollard.co.uk](http://www.djpollard.co.uk)

**07967 272808**

### **CORNWALL COUNCILLORS FOR HAYLE**

Contact us directly or through the Hayle One Stop Shop where we hold surgeries on the first Saturday of each month

**0300 1234 100**

### **SOUTH WARD**

John Coombe

**01736 752831**



# CALVIN GOODWIN

Painter and Decorator  
City and Guilds qualified

*No job too small*

Tel: 01736 755639  
Mobile: 07594 031765

*Please telephone to discuss your requirements or to arrange an appointment for a no obligation quote*

[www.goodwindecorating.co.uk](http://www.goodwindecorating.co.uk)

Local businesses situated on the quay and harbour users will be issued with parking and visitor permits by the Harbour Authority and any vehicle not displaying a permit will be issued with a parking notice. Signs have been placed around the quay by Llawanroc, the parking enforcement company as a reminder to public of the penalty if a permit is not displayed. Harbourmaster Hayle Harbour Authority Ltd.

## **Hayle Youth Project**

Two exciting activities for February 2013 half term have been organised.

Climbing the Granite Planet on Tuesday Feb 19<sup>th</sup> and Archery on Wed 20<sup>th</sup> February.

Places cost £5 and include transport. There are only 12 places, so please book quickly. (Activities are supervised by professional and qualified youth workers).

Please call our office on **755790** for further details.

Heidi Row Youth Worker

## **Hayle Food Bank**

It is a year since we opened and January 2013 has been our busiest month in giving a hand up to those in need. So a big Thank you to the people of Hayle, all the Churches and in particular the Hayle Co-op.

## *Angel Ticklewand Craft Emporium*

*For hand crafted gifts and presents*

Embroidery, needlecraft, soft toys,  
decorative and collectable figures,  
glassware, woodturning,  
and much, much more.

++

*Our embroidered items can be personalized in our in-shop workshop - add a name or a personal message to make it an extra special gift!*

Find us on the balcony at Pratt's Market  
11-13 Chapel Terrace, Hayle TR27 4AB

[www.angelticklewand.co.uk](http://www.angelticklewand.co.uk)

## Hayle (Heyl)

*Hayle is a happy place to live  
a town in the county of Cornwall  
several lovely towns nearby  
where holidaymakers are welcome.*

*To listen to Hayle Town Band play  
watch them marching through the town  
looking smart and sounding grand  
they are thought of with renown.*

*Not far to get to Penzance  
to see the Humphry Davy statue  
to do shopping and buy a pasty  
and enjoy every beautiful view.*

*Hayle is also near St Ives*

*another place of beauty  
from where the R.N.L.I save many  
lives  
being brave and doing their duty.*

*Hayle has its own lovely beach  
you sunbathe to get a rosy glow  
the cathedral city is not far to reach  
you can have a day out in Truro.*

*Lots of useful shops in Hayle  
either in Copperhouse or Foundry  
Square  
with plenty of sunshine and  
sometimes a gale  
throughout all the year.*

*Mrs Doreen M. Carne.*

## TJ'S CARPETS LTD.



**New Showroom at Tolroy Garage,  
58 Mellanear Road, Hayle TR27 6HF**

Come and see our wide selection of carpets & vinyls,  
laminates and patterns

**Our famous home selection service still available**

Full range of flooring accessories

**Call Now! 01736 757540 or 07976 608215**

Free measuring & estimate service

**“Before You Buy, Give Us A Try”**

# HAYLE FILM CLUB

## HAYLE FILM CLUB SPRING SCREENINGS

The latest film adaptation of 'Anna Karenina' starring Keira Knightley and Jude Law, will be screened on **Saturday 9 February at 7.30pm.**

This is the new UK film adaptation directed by Joe Wright of Tolstoy's tale of adulterous passion and betrayal in Tsarist Russia. It is re-imagined in a dazzling theatrical style.

The most successful French film ever released has finally come to the UK – and to Hayle. The French-language smash hit '**The Intouchables**' will be presented, with English subtitles on **Saturday 9 March at 7.30pm.** Francois Cluzet plays a white aristocratic quadriplegic who hires a black carer (Omar Sy). Their unlikely relationship is the basis of this comedy-drama. Both screenings are upstairs at the Passmore Edwards Institute.

Doors open 7.15pm.

Tickets are £5 (£4 for members), and can be bought in person from Store 28, (28 Penpol Terrace, formerly Biggleston's) reserved by 'phone through Sarah Turk on 752319, or online at [www.haylefilmclub.org.uk](http://www.haylefilmclub.org.uk) Tickets on the door are subject to availability.

Free refreshments afterwards make it a fun evening out. Come and share

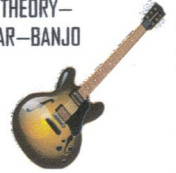
our love for film!

**Donna Anton**

### GUITAR LESSONS

LEARN TO PLAY SONGS *YOU* WANT TO PLAY STRAIGHT AWAY  
EASY-GOING LESSONS -STYLES FROM ROCK & POP TO FOLK &  
BLUEGRASS—ALSO HELP WITH MUSIC THEORY—  
ELECTRIC/ ACOUSTIC AND BASS GUITAR—BANJO  
AND UKELE  
ALL AGES AND ABILITIES WELCOME.  
REASONABLE RATES

**PHONE 01736 753709**



## Hayle in Bloom

**Chairman**

**Margaret Tanner**

wishes everyone  
a Happy New  
Year. We

continue to need  
your help and our  
monthly meetings

are on the 1st Monday of each month  
at Hayle R.F.C. at 7pm if you would  
like to attend. Your input is always  
welcome.



## Hayle Rotary Club

**Working in the Community for the  
Community!**

Members of the club, family and  
friends, held a charity meal at the  
Old Quay House to support one of

their favourite causes- Cornwall Hospice Care. £1000 was raised and the club added another £1000 to enable the purchase of two syringe drivers, essential to palliative care. Well done to the boys' team from Penpol School who won the local round of the Rotary Public Speaking competition with a topic 'Inspired by Churchill'. The children had to prepare a talk and present it to an audience. The team will now go to an area round and, hopefully, to the District final in March,

~~raise awareness on health issues~~

**P G FRANKLIN**  
Chapel Hill, St Erth  
Carpenter & General House Repairs  
Garden Landscaping  
NO JOB TOO SMALL  
**Telephone: 01736 757360**  
**Mobile: 07778 739341**

If you would like to help and want to find out more contact our secretary

**Alistair Kinsey**  
Independent  
**Hearing Aid Audiologist**  
[www.hearingmobility.co.uk](http://www.hearingmobility.co.uk)  
**01822 617883**

CLEAR SPEECH ANYWHERE  
WITH MOXI PRO  
TV TOO LOUD ?  
FAMILY MUMBLE ?

**THERE IS AN OPTION  
FOR YOU !**

At  
KEAST OPTICIANS  
18 Commercial Road  
Hayle  
01736 753145  
Home visit charge



**Want to play music?  
You're never too old!**

**Learn music the fun way  
with Graham Smith**

I'm a Registered Guitar tutor, a coach and session musician with over 30 years' experience. I believe that anyone can learn to play. I can help you to learn guitar, bass guitar and blues harmonica and to write songs and record them.

**Call me on 01736 740141**  
(based near Penzance)  
[graham@music tuitioncornwall.co.uk](mailto:graham@music tuitioncornwall.co.uk)  
[www.music tuitioncornwall.co.uk](http://www.music tuitioncornwall.co.uk)

David Raymer **01736 755029**  
davidraymer@aol.com or come  
along to one of our meetings at the  
White Hart Hotel 7pm on Mondays,  
You'll get a warm welcome!

## **Hayle Swimming Pool Supporters Group Meeting**

**PLEASE** come to a meeting at  
Hayle Community Centre at 7 pm on  
Monday February 18<sup>th</sup> 2013, and join  
the Pool's supporters group. The old  
group closed a while ago, but we are  
trying to get it started again, and are  
looking for ideas to improve the pool,  
fun ways to raise money, hands on  
help with painting and decorating

etc, in fact ANYTHING that helps the  
pool stay open and thrive!  
**BUSINESS SPONSORS WELCOME  
TOO...** Old or new friends please  
come, all welcome! Just turn up or  
contact Liz Tytler  
[liz.tytler@talktalk.net](mailto:liz.tytler@talktalk.net) or  
tel.**01736 448539** or  
at the Pool Café on Memorial Walk

## **Hayle Art Society**



**If you are an artist  
or budding artist  
why not join a group  
of like minded  
people? Hayle Art  
Society holds two sessions weekly,**

# **St Erth & Hayle Cars**



**4 - 8 - 16 Seat Vehicles.  
8 Seat Party Buses.  
Polite, Friendly Staff.**

**Local Trips  
Sea & Airport Transfers  
Tours & Much more!**

**01736 754000 or 01736 754040**

**[www.sterthandhaylecars.co.uk](http://www.sterthandhaylecars.co.uk)  
[info@sterthandhaylecars.co.uk](mailto:info@sterthandhaylecars.co.uk)**

one on Tuesday from 1.30 to 3.30 pm and another on Wednesday evening from 7.00pm to 9 pm. Both groups have visiting tutors once a month who are able to show us different techniques and methods in various media. There are a limited number of vacancies in both groups, and the sessions are held at the Passmore Edwards Institute in Hayle.

**Further details ring Penny on 01736 756445 or Brenda on 01736 797407.**

## *Letter*

### ***Parking on Penpol Terrace***

*The time limit for parking along the Terrace is 30 minutes. Should you want a coffee at Fresh Café you may end up with a scalded throat or a ticket. Parking at the Standard Pub end and walking the whole length for some flowers, browsing a little too long will likewise incur a ticket. Perhaps some kind soul can explain the reasoning for these restrictions, for if they are there to aid the flow of traffic and shoppers, the opposite is true. In the winter months there might only be a*

## **LINDSAY'S DOG GROOMING**

*Dog grooming for all sizes, breeds & coats. Specialising in Poodles.*



For more information, contact Lindsay on 01736 753864 or 07792 849240



*Situated at Connor Downs in Hayle*

*Local collection & delivery*

## **PAUL SHERRIS**

**Hayle's only local family owned FUNERAL DIRECTOR**  
**Private Chapel of Rest**  
**Pre-Payment Plans available**  
**West Terrace, Hayle.**  
**TR27 4JS.**  
**01736 753969**  
**Day or night**

dozen cars parked and yet I have seen on occasion two Traffic Wardens taking numbers. What for? There is ample space for more shoppers, no one being prevented from parking.

If the restrictions are there to stop residents from parking all day, fair enough, most have garages anyway,

But then surely a 60 or 90 minute limit would sort that out and at the same time allow shoppers to shop without the

threat of a fine. Along Hayle Terrace and in Copperhouse no limit seems to work very well. Mary Portas' recommendations to help small towns include free parking, something the Government endorses. Now if only the Chamber of Commerce and the Town Council could do the same we might generate more trade. Perhaps the parking tickets given out generate some income for the Council, perhaps to pay the Warden's wages?  
Name and address supplied



*1000's of greeting cards.  
100's of gift ideas.  
In store Loyalty Card scheme.*

**Celebrate**  
in Style  
Send  
Flowers  
Today.

**Flowertime Florist**  
**[www.wesendflowers.co.uk](http://www.wesendflowers.co.uk)**  
**0800 056 0711**

**(NOTE-** Cornwall Council own and control Hayle's main car parks and refuse to provide free parking!

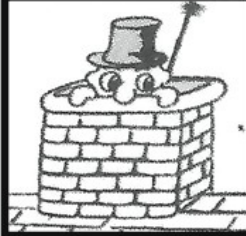
If Cornwall Council decides to go with the bridge across the middle of Penpol Creek from the new supermarket car park to the Penpol Terrace shops, people can take advantage of the 3 hours free parking on South Quay negotiated by the Town Council!

**Editor)**

## ***Camborne Nicked Dick!***

**Time after time we hear about the genius engineer who made the steam engine efficient enough to drive the Industrial Revolution - 'Richard Trevithick of Camborne'. Camborne has Trevithick Day, they have a Trevithick Statue outside their Library (Always used to get a new outfit from the students in Rag Week) and then there's that song..."Going up Camborne Hill".....**

I think it's a bit of a con, though, as Trevithick was not born in Camborne, but Illogan (though he went to school in Camborne where he was apparently a poor student!) When his genius flowered and he did his best work, he was in HAYLE at Hayle Foundry, working with the other fine engineers, William West and Arthur Woolf sponsored by and working for John Harvey of Harvey and Co. at the cutting edge of the



## **Lawrence Butcher Chimney sweep**

**Brush N Vac, Cows Fitted,  
Reliable Clean Service,  
Free Advice**

**Enfield Farm  
30 Hayle Road, Fraddam  
Hayle TR27 6EH**

**01736 850033  
07966 547829  
loloubutcher@aol.com**

development of high pressure steam engines, vastly superior to those developed elsewhere.

Hayle was the “Silicon valley” of the 1800s, Harvey was its “Bill Gates” drawing, supporting and encouraging the best talents!

Trevithick married one of John Harvey’s daughters, Jane with whom he had six children.

John Harvey built the original White Hart Hotel for Jane’s security (now the Freemason’s Hall) and then the newer grander White Hart beside it; Hayle **should** be the town most associated with Trevithick, where he did his best work, where he, his wife and children lived, and the place he came home to after his travels....but Camborne got in while we were napping and NICKED DICK!

Never mind though, as we can still walk around Foundry and area, knowing we walk where those great innovators walked, worked, lived, ate drank, socialised...Its good enough for me!

**Foundry Boy.**

# PLANTS ON THE WALK

This issue we’ll bring attention to the wonderful Cotoneaster frigidus ‘Cornubia’. This is one of the finest larger growing Cotoneasters. It’s a spreading semi-evergreen shrub which can grow up to 25 ft high and even

# JC ELECTRICAL

Your complete 24 hour Electrical Service

**Rewires • New Build • Lighting • Showers • Extra Sockets • Heating**

City & Guilds Qualified (Tests to BS7671)

Part P registered

Prompt and reliable friendly service

Free estimates and all work guaranteed

**Office: 01736 754543**

**Mobile: 07739 577549**



more in width. If left alone this shrub would be clothed to the ground with foliage however on the walk the specimens have been pruned allowing it to develop a genuine tree-like form. This Cotoneaster has abundant rich green, pointed leaves that are 4 to 5 inches long. It has clusters of small white flowers in summer which are followed by enormous crops of red berries in the autumn. It's not surpassed in this respect by any other Cotoneaster. In fact this shrub has received an Award of Merit in 1933, First Class Certificate in

1936 and an Award of Garden Merit in 1969, by the RHS. There are a number of these shrubs along the walk. The most impressive are found at the beginning of the walk opposite the Swimming Pool Car Park. They are so heavily laden with berries at the moment that the branches are hanging quite low. At this time of year they are at their most impressive and well worth a look. While you are there you have to take a look at the Scoria Steps leading up to Clifton Terrace. **G-Force** cleared it all back and now it is looking wonderful.



## Webb & Philp Ltd

electrical contractors



**17th** edition  
**BS7671**

### All aspects of Electrical work undertaken

Free Estimates, No Job Too Small  
Prompt, Reliable, Fully Qualified, Est. 1972

- ✓ Re-Wires
- ✓ Security
- ✓ Showers
- ✓ New Build
- ✓ Testing
- ✓ Maintenance
- ✓ PAT Testing
- ✓ Extra Sockets & Lights

Telephone/Facsimile 01736 753651    Mobile: 07768 210227  
email: [electricians@webbandphilp.co.uk](mailto:electricians@webbandphilp.co.uk)

# Hidden words Quiz

## by Cleverclogs.

This time we are looking for things  
**used in the kitchen.**

1. Anyhow, his knowledge of the local area is very extensive.
2. See if you can contrive to get her here before six o'clock.
3. A huge running rat erupted from the hole and ran up the lane.
4. I only seem to dream in certain positions as I sleep.
5. Which lad least resembles the one you saw last night. We can count him out.
6. I got up late this morning and missed the bus.
7. This bread is hard - how long have you had it?
8. I think spaghetti merits a mention, it's so quick and useful.
9. My mum was a great one for knitting, she didn't use patterns.
10. What's he called? Eric or Ernie? I know it begins with an E.
11. Is Josie very good at cooking? She looks well fed!

12. Who's top of the heap? Ron I should think. He is brainy.

13. I'll tell you what I like - wild boar done in the oven.

14. Remember, children, stop and look before you cross the road.

15. This string's no good, it's in knots and all tangled up.

Answers to quiz 106 "Pies":-

1. Homity. 2. Humble. 3. Chicken. 4. Cottage. 5. Apple. 6. Rabbit. 7. Pork. 8. Cumberland. 9. Mince. 10. Gala. 11. Beef. 12. Shepherds. 13. Steak. 14. Scotch. 15. Cherry.

There were **38** entries, almost all correct, and the winner, chosen by a Random Number Generator on the internet was No. 4, Mr P Omand from Mousehole.

**Congratulations! Mr Omand wins a £20 voucher that can be spent with any of our listed Hayle Pump advertisers!**

*To win a prize voucher worth £20 to be spent with any of our advertisers, send your answers along with your contact details to [editor@haylepump.org.uk](mailto:editor@haylepump.org.uk) or one of the drop off points listed inside the front cover. The winner will be drawn at random from all correct entries received by **20 March 2013***

# Regular Club Listings

**Hayle in Bloom.** Last Monday of the month, except for Aug & Dec. Held at Hayle Rugby Club 7pm.  
[www.hayleinbloom.org.uk](http://www.hayleinbloom.org.uk)

**Model Boat Club.** Wednesday evenings 7-9pm & Sunday mornings 10-12 noon, meeting at green chalet by Hayle outdoor swimming pool.  
Tel: 01736 755516,  
or Les on 01736 754254

**Hayle Camera Club.** 3rd Tues. of month 7.30pm at Passmore Edwards Institute,  
Tel. 01736 753215.

**Hayle & District Bowling Club.** 10am every Sunday. Short Mat bowling indoors during winter  
01736 753565

**Royal British Legion.** Passmore Edwards Institute. Every Mon.Wed.& Fri evening, and Sat.afternoon.  
Tel.758482.

**St Ives and Hayle Community Choir.** Tuesdays, 2pm St Anta Church Hall, Carbis Bay. All welcome  
Neil Shepherd 01736 759944  
[www.cornwallcommunitychoir.co.uk](http://www.cornwallcommunitychoir.co.uk)

**Hayle Darby and Joan Club.** Fortnightly on Fridays at 2:30 pm.  
Methodist Church Hall.  
Tel 01736 711134

**Hayle Flower Club.** 4th Wednesday of the month 7.30pm, Hayle Daycare Centre. In the conservatory.  
01736 757028.

**Hayle Harbour Users Association.** First Mon.of each month, 7.30pm,  
Royal Standard Pub.  
R.Lello 01736 757632

**Hayle Judo Kwai.** Meeting at The Downes, Foundry Hill,.Tues & Thurs.  
Sensei Richard 01736 740723  
or Lucy Alldritt, sec. 07581490714

**Hayle Library Reading Group.** 2.00pm first Wednesday of each month. Free. Contact Hayle Library.

**Hayle Line Dancing Club.** Every Monday at Hayle Methodist Church 7.30 – 9.30pm. Adults £3, Children £1 (includes light refreshment). Car parking available. Tel 01736 752610.

**Hayle & District Lions Club.** 2nd and 4th Tuesday of every month, 7.30pm at Passmore Edwards Institute.

Tel. Mel George 01736 756484

**Hayle Local Vocalz.** A lively 60 strong mixed voice adult choir.  
Monday evenings 8pm, Passmore Edwards Institute,  
Neil Shepherd 01736 759944  
[www.localvocalz.co.uk](http://www.localvocalz.co.uk)

**Hayle Meanderers** Every Wed.10.30am Commercial Road car park. Free, + cont. to carshare.  
J Smith 793631

**Hayle Old Cornwall Society.** First Friday of each month. Oct. to May.  
Passmore Edwards Institute,7.30pm.  
Tel. Maria Prosser, 01736-755072

**Hayle Pilot Gig Rowing Club.**

Rowing out of Hayle Harbour most Tuesdays and Thursday evenings. contact the club via the website [www.haylegigclub.com](http://www.haylegigclub.com) 01736 754254

**Praze Hayle Choir.** Every Tues.7.30pm. Methodist Hall D.Metcalf 757720

**Hayle Model Railway Club & Duchy Railroaders Club Rooms** Unit 5, Praze Business Park, Praze-an-Beeble. Mon. & Thurs. 7pm – 9.30pm. Bob Mims 757910 [bobmims@live.co.uk](mailto:bobmims@live.co.uk)

**Hayle Rotary Club.** Monday 7 pm except Bank Holidays White Hart Hotel, David Raymer 01736 755029 or Trevor Osborne 01736 793596

**The Rotary Club of St Ives Bay** New Rotary Club for men & women meeting on Tuesdays at the Carbis Bay Hotel 6.30 for 6.45pm. Contact the [secretary@stivesbayrotary.co.uk](mailto:secretary@stivesbayrotary.co.uk)

**Hayle Samba Community Band.** Every Tues. 7:30 to 9:30pm Meeting Room at rear of The Royal Standard, Hayle. Tel: Frank/Joy 01736-754976

**Save Our Sand.** 2nd Tuesday of each month, 7.30pm at the Passmore Edwards Institute. Hayle

**Heyl St. Piran Singers.** Every Thursday at Hayle Methodist Church Hall at 7.30 to 9.30pm. For details Ann Birch 01736 752335

**Table Tennis for Fun,** every Friday

at 2pm at Hayle Methodist Church Hall, Chapel Hill, Hayle. Only £2 per session. Bats, balls and squash provided. John Nunn 01736 759686

**Heyl Town Band.** Rehearsals Tuesdays & Thursdays 7:30pm – 9:30pm, Junior band rehearsals Thursdays 6:pm – 7:00pm

**Hayle Twinning Association.** 2nd Mon. of each month at Hayle Community Centre. 7.15pm in Room 7. Mike Stuckey 01736 753755, [mikestuckey@tiscali.co.uk](mailto:mikestuckey@tiscali.co.uk)

**Hayle Penwith U3A** Hayle Day Care Centre Social meetings 2<sup>nd</sup> & 3<sup>rd</sup> Thurs. 2pm. Art, History, Writing, Play reading, Current Affairs, Luncheon Club. Chairman Mel George 756484 Secretary Tess Hulland 759658

**W.I. Hayle East.** 1st Tues.of the month, 7.30pm, Hayle Daycare Centre Tel. 01736 753503.

To appear on this page free of charge drop in details to Store 28



**Anthony Solomon/ Painter& Decorator**

All aspects of decoration Free Quotes!!  
undertaken!! Tiling!! No job too small!!

[Tel:01736798585/07890988236](tel:01736798585/07890988236)

[anthonyssolly@hotmail.co.uk](mailto:anthonyssolly@hotmail.co.uk)

# Advertiser's Index

33 Alistair Kinsey Hearing  
 30 Angel Ticklewand,Craft Emporium  
 12 Angove Sports  
 42 Anthony Solomon Painter/Decoratr  
 10 Barton Print  
**11 Bean Belt**  
 21 Biz & Bytes  
 30 Calvin Goodwin Decorator  
 3 Café Riviere  
 37 Chimney Sweep  
 11 Cleaner Carpets  
 19 Cliffords Plumbing  
 14Cornwall Chiropractic  
 29 Cornwall Councillors  
 7 C Spray Bath Renovations  
 28 David N'jie Decorator  
 4 Des Button Electrician  
**9 Farm Shop (The)**  
 36 **Flowertime**  
 10 Gallery (The) Coffee Bar & Gifts  
 32 Graham Smith Music Tutor  
 27 Guitar Lessons  
 8 Hayle Cycles  
 43 Hayle Day Care  
 6 Homeopath  
 18 John Andrews Joinery  
 38 J.C. Electricals  
**5 Keast Opticians**  
 16 Kleeneze  
 35 Lindsay's Dog Grooming  
 17 Local Vocalz  
 22 Marine Electrics  
 9 Mike Preece Taxis  
 21 Mobile Foot Clinic  
 17 Neil Shepherd Music Teacher  
 20 Nick Farrar Windows  
 25 Paradise Park  
 12 Passmore Edwards Institute  
 35 Paul Sherris Funeral Service  
 13 P.D.H. Builders & Roofing  
 44 Penpol Garage  
 33 P G Franklin  
 27 Philps Pasties

26 Plantech  
 26 Rick Harvey Handyman  
 16 Sarah Lane English Lessons  
 4 Simply Unwind  
 7 Sleepy Hollow  
 34 St. Erth & Hayle Cars  
 29 Sylvia'Exercise Classes  
 13 Tee Cee Tech Computers  
 31 TJ's Carpets  
 39 Webb & Philp Electrical  
 24 W J Winn Funeral Director  
 Pick up your FREE copy of the Hayle Pump Newsletter at any of those advertisers listed above in **bold**.  
 You can also get a copy from **Hayle Library, Hayle Community Centre, Bodriggy Health Centre, Wyevale Garden Centre,** and the following Post Offices – **Copperhouse, Martins & Connor Downs.**  
 You can also view current and past copies online at our website .  
[www.haylepump.org.uk](http://www.haylepump.org.uk)



## **HAYLE DAY CARE CENTRE** **Commercial Road, Hayle**

An affordable day care facility for the elderly of Hayle, St Ives and district

Transport • Freshly cooked meals

Also includes bathing and hairdressing  
 Therapy and lively social interaction

Always a friendly welcome

**Call 01736 755000**

# Penpol Garage

*In tune with technology*

Established over 20 years we have grown from strength to strength by word of mouth referrals due to the quality of our work and service.

**Does your car need servicing?  
Dashboard warning light on?  
Is your car running well?**

**Why pay expensive 'Main Dealer' servicing and repair bills when we can save you £££'s?**

**At Penpol Garage we have the experience, training and use the latest technology to maintain and repair your vehicle to the highest standards.**



**Did you know...we can also save you money by re-mapping your vehicle?. Scan the QR code below for further information and give us a call...**

**Telephone: 01736 - 757011**

**Mobile: 07921 218448**

**17A Penpol Terrace, Hayle, TR27 4BQ**

**email: [info@penpolgarage.co.uk](mailto:info@penpolgarage.co.uk)**



MOST MAJOR CARDS ACCEPTED

































2

















