

APR/
MAY
2013



HAYLE PUMP NEWSLETTER

Hayle's Historic Sluice Gates Raised from the Deep



FREE COPY- please take one.
Made possible thanks to our advertisers

Issue 108

Hayle Pump Newsletter
Passmore Edwards Institute
13-15 Hayle Terrace, Hayle, TR27 4BU
www.haylepump.org.uk

Editor

Graham Coad
editor@haylepump.org.uk

Desk Top Publishing

Jeff Turk/ Rich Morgan
ntp@haylepump.org.uk

Treasurer

John Jansen
treasurer@haylepump.org.uk

Advertising

ads@haylepump.org.uk

Web Site

John Bennett
webmaster@haylepump.org.uk

Team Members

Sarah Turk, Jeff Turk, Paul Scott
Jeffandsarah@theturks.fsnet.co.uk

Subscriptions & Web

The Hayle Pump can be viewed and downloaded online at:

www.haylepump.org.uk

For 6 issues by mail, please send a cheque or postal order for £3.50 made payable to **Hayle Pump Newsletter** to:

HAYLE PUMP SUBSCRIPTIONS
35 Penpol Terrace, HAYLE TR27 4BQ.

Please state delivery name & address

The Hayle Pump would like to remind readers that all material accepted as points of view are not necessarily the opinion of the Editorial Team.

Items received should be a maximum of 400 words and may be edited or omitted due to limitations on space.

News, letters, notices etc. must be emailed to editor@haylepump.org.uk or dropped off at **Store 28** or the **Passmore Edwards Institute**

The decision of the Editorial Team is final

Please note new deadline for copy is now the 13th of the month.

Next deadline is 13 May.

Display Sizes and Advertising Rates

Page	Size (mm)	Price
Full	190 x 130	£90.00
1/2	130 x 95	£30.00
1/4	63 x 95	£15.00
1/8	63 x 42	£10.00

Advertising Deadline
13th of prior month



Please visit our website for more information, guidelines for artwork submission of adverts and important notes to advertisers.

www.haylepump.org.uk

Editorial:

Spring Editorial

Hopefully by the time this is printed there will be some signs of spring to cheer us all up!

This edition covers the date of **Parish, Town and Cornwall Council elections** scheduled for Thursday 2nd May 2013. (see Council Corner)

The debate mentioned in the last issue as to the position for the proposed **bridge over Penpol Creek**, was informed by the results of the Public Consultation being around 80% in favour of a position over the middle of the creek from the planned supermarket car park to somewhere near Hayle Cycles. Hayle Town Council voted to support that view and Cornwall Council confirmed it.

NORTH QUAY has had its revamp completed and the public are now welcome with the upper and lower public Promenades fully open.

The old **SLUICE GATES to Copperhouse Pool** have been saved from being cut up and scrapped, by being set up as a

feature on the Memorial Walk, where the gardening team plan to make a dramatic feature of them. Comments to gardeners so far are mostly positive!

MORE HELP NEEDED PLEASE for the Hayle Pump Team.
We welcome volunteers who want to get involved and have a go at helping get the magazine published, get in touch!

Read on and enjoy!!!
Ed.

editor@haylepump.org.uk



Café Riviere

Across Hayle's Jubilee Bridge

Serving a variety of hot food, late breakfasts, drinks, ice-cream, cream teas and snacks.

- *Indoor and outdoor seating.*
- *Take-away is available.*
- *Open all year.*
- *Next to the public open-air swim pool, sub-tropical gardens, promenade and nature reserve.*

Des Button

SPRINGFIELD

**33 Clifton Terrace
Hayle TR27 4BP**

**ELECTRICAL
SERVICES &
SUPPLIES**

01736 753211



**PART P
REGISTERED**



**Council Corner
April/May 2013**

***Town and Parish
Council Elections and
Cornwall Council
Elections***

take place on 2 May 2013. If you would like more information about standing for Council and what it involves please contact the Town Clerk or the Electoral Service Team at Cornwall Council.

Candidate nomination packs will be available from the Town Council Offices or from the Cornwall Council Offices in Penzance or Camborne. If you are not able to stand for Council please make the effort to vote, this is your opportunity to have your say in selecting those that make choices for your town!

Discover Hayle Map

Following discussions with local businesses about the Discover Hayle Map, Hayle Town Council has decided to give the maps to businesses and local organisations for free distribution to their customers. However, the Council is offering a sponsorship package for £45.00 inclusive of VAT which includes the following:

1/ Full webpage presence and banner advert on the Discover Hayle

SimplyUnwind

**Complementary Health Clinic
6 Foundry Farm, Foundry Lane,
Hayle**



Kerstin Weber Cert. ECBS Dip ITEC CThA

**The Bowen Technique
Deep Tissue & Holistic Massage
Indian Head Massage
Reflexology**

**Call 01736 754429 or 07782541043
www.simplyunwind.info**

- Map website www.haylemap.org
 2/ Inclusion in local press articles (such as this!)
 3/ A free dispenser to display the maps
 4/ Two flat copies of the map for you laminate or frame for display.
 5/ Inclusion in a list of sponsors on the Hayle Town Council notice boards.

We are grateful for the continued support of sponsors;- *West Cornwall Local Action Group Grant, Cornwall Council - Sustainability Department, Cornwall Council – Transport Department, National Trust, Hayle Area Partnership, Co-operative Membership Community Fund, Western Greyhound, Riviere Sands Holiday Park, South West Water, St Ives Bay Holiday Park, Truthwall Farm, Star Inn- St Erth, Four Way Print Ltd, Coast2Coast Karting, and Treglissou Touring Park.*

If you are interested in the sponsorship package contact Caroline or Karen at the Town Council office.

Mayor's Annual Citizens and Organisations of the Year

Nomination packs are available from the Town Clerk's office and the Library for the Mayor's Citizens and Organisation of the Year Awards. The Council is also seeking nominations for Hayle Young Person



Designer Frames
33% / 20% discount

Varifocals
From £129 complete

Prescription Sun Spectacles
From £59.99

Superlite Rimless Spectacles
2 year anti-breakage warranty on frames and lenses
from £169 complete

Photochromic Promotions
On Transitions/Kodak & Rodenstock lenses



Branches in Hayle and Penzance

18 Commercial Rd, Hayle, TR27 4DG.
Tel: 01736753145

21 Alverton St, Penzance.
Tel: 01736366106

www.keastopticians.co.uk

of the Year and Hayle Youth Organisation of the Year. The deadline for all nominations will be Friday 3 May 2013.

Footpath 51 Jubilee Path Project

The Jubilee Project "Footpath 51" between the east end of the King George v Memorial Walk and the Recreation Ground in Hayle has had its clearing and improvement works completed. It is to be a dual use foot and cycle path as an experiment, reviewed after a period of one year. Staggered barriers have been fitted at both ends that should allow pedestrians, pushchairs, wheelchairs and bicycles while hopefully discouraging horses and motorcycles (both can damage this type of surface). The path has been in increasing use since the undergrowth was cleared and is proving extremely popular.

Forthcoming Calendar Dates

The Annual Elector's or Town Meeting will be held on Thursday 18 April at 7p.m. at Hayle Community Centre. During this meeting the Mayor presents the Annual Report and it is an opportunity for members of the public to quiz Councillors on any of the Council's activities. The Annual Council Meeting and Mayor Making Ceremony will take place on Thursday 16 May 2013 at



Willoughby
Construction & Maintenance

For all your Property
Renovation, Extension,
Maintenance, & Garden Service
Requirements

DPWilloughby Construction
Building & Maintenance Service
St Erth, Hayle, Cornwall

dpwilloughbyconstruction@hotmail.co.uk

Tel 01736 759216
Mob 07702 060533

Hayle Day Care Centre. During this meeting awards will be presented to this year's Citizens and Organisations of the Year.

Safer Cornwall Website

The Town Council has agreed to help promote Devon & Cornwall Police's community safety surveys to help officers to gauge local issues. There is a new internet based survey process set up through the Safer Cornwall website:-

<http://safercornwall.co.uk/surveys/>.

The surveys will help Police and other partners understand and address local concerns. It is hoped that local residents will spare a few minutes to complete the survey.

Hayle Community Centre and Frank Johns Centre

Space is available for regular sessions or one off bookings. Remember that the CAB, Link into Learning and others hold regular sessions and surgeries. There is also currently a couple of units available on a long lease suitable as office and or meeting space, ideally for local, community based organisations. Contact the Town Clerk for details of services and available space.

Hayle Town Council
Hayle Community Centre
58 Queensway, Hayle,
TR27 4NX
Tel. 01736 755005
townclerk@hayletowncouncil.net
www.hayletowncouncil.net
Open 9.30am – 12.30 p.m.

Rose and Cabbage Club withers and dies.

In 1970 nine people started a gardening club in Hayle. They were Vera Mills, Muriel Dearing, Henry and Ida Hollow, George and Florence Chapman, Pat Hutchens and her son Marshall. They named the club the "Hayle Rose and Cabbage".

Initially meeting in member's homes, as membership grew they held meetings and shows in larger venues. In 1971 the Hayle



Baths and Kitchens

**Bath Resurfacing
and Repairs**

**Pressure washing
Domestic and Commercial**

Patios ● Driveways ● Paving
● Decking ● Walls

- no area too small -

**Contact for details:
01736 756077**

The Sleepy Hollow

Your Alternative Gothic Gift Shop

Family-run Gothic Gift Shop

Selling a wide range of Gothic gifts,
candles, incense, clothes and more

Incorporating:

Sleepy Hollow Herbs,
Medicinal & magical herbs,
Tissaries, and
Hand-blended incense and oils.

Visit our shop at Unit 3 - Pratts Market,
Chapel Terrace, Hayle TR27 4AB

07747 078274

www.thesleepyhollow.vpweb.co.uk

Community Association (HCA) decided to have a marquee on the Hayle Recreation Ground with allaffiliated clubs taking part, the Rose and Cabbage were involved. The membership by then had grown considerably and it was decided they would have their own show the next year, so in 1972 the first Summer Show in the Marquee was held. During the following years they held Spring and Autumn Shows, monthly meetings and various other events.

Sadly over the last ten years or so it

Hayle CYCLES

MOUNTAIN - ROAD - BMX SPECIALIST

Bicycle Sales and Repairs

Tel: 01736 753825

36 Penpol Terrace, Hayle TR27 4BQ
www.haylecycles.com

has become difficult to find people who were willing or able to sit on the committee and help run the events to keep the club going. By this time the cost of running the Summer Show



Rose and Cabbage Club :

Back Row: Mike Reffold, Joanna Kwiatkowska, Yvonne Dineen, Frank Aplin, Kate York, Lyn Reffold, Mel Gears, Sue George, Mary Bryon-Edmonds, Jeff Turk.

Front Row: Ruth Atterbury-Thomas, Sarah Turk, Jackie Aplin, Don McGears, Marion Coombe

had become so expensive that it was no longer viable to hold the show in the Marquee, so for the last three years Hayle Day Care Centre kindly allowed the show to take place there. The membership dwindled so much that it was decided at the AGM in 2010 that the Club would be run by the committee but the committee

members are getting to an age when they are no longer able to carry on with all the work that is involved – our eldest member is in her nineties and the youngest in her sixties! Over the last two years the Club had assistance from Hayle Allotment Society, which was much appreciated and there was hope that the Society would be able to take over, but alas that didn't happen. So it is with regret that after over forty years the Hayle Rose and Cabbage Club has been disbanded. It is a credit to all the people who have been involved in one way or another in keeping it running for so many years.

The committee has commissioned a bench to be made in memory of the Club and this will be placed on the King George V Memorial Walk for all to use and enjoy. The remaining financial balance has been donated to St. Julia's Hospice, Hayle Day Care Centre and Hayle Flower Club.

If you or your family have donated a cup or trophy and would like it returned, please get in touch with the Show Secretary, Sarah Turk, 35 Penpol Terrace 01736 752319 and she will get it to you in July, when the cups come back from the prize winners.

The Hayle Community Archive would be very interested in having any memorabilia that anyone has about the Club. The phone no. is 01736 753962 and the address is The Old Brewery Office, 1 Sea Lane (behind

LOOKING FOR HEALTH OPTIONS?

HOMEOPATHY

A tradition that has helped millions of people around the world gain control over their health.



Frances Karol BSc. DHMS(Can) MHMA

Practitioner of Classical Homeopathy

Tel: 0777 436 2414

Located in Hayle and St. Ives

The Cornish Arms). They are open on Tuesday and Thursday from 10am – 1pm.

The outgoing committee would like to express their thanks to everyone over the last forty odd years who has helped and supported the Rose and Cabbage.

The Farm Shop

**31 Penpol Terrace, Hayle
TR27 4BQ**

**Open -6 days a week
8am - 5pm**

For all your local produce
Fruit, vegetables, plants,
flowers, free range eggs and
Cornish potatoes.

Now in

**Bedding plants
New Cornish potatoes**

The Gallery Coffee Bar

Warm & welcoming
With comfy indoor & courtyard seating

Pop in and see us for :

- *Great Coffee
- *Tea Pig — Herbal Infusions
- *Delicious Home Made Cakes
- *NEW..All Day Breakfasts
- *Warm Bacon Rolls served all day
- *Soups, Jacket Potatoes, and Paninis.



Now selling a range of affordable gifts
Open from 9am — 5pm

1 Chapel Terrace, Hayle
(by viaduct) 01736 756829
Dogs are Welcome

BARTON print

Tel: 07799 411525
Fax: 01736 757022

Quick Reliable General
Printing Service

JUST A SMALL SELECTION OF THE SERVICES WE OFFER!

- BUSINESS CARDS
- COMPLIMENT SLIPS
- NCR PADS / SETS
- LEAFLETS
- MENUS
- NEWSLETTERS
- ENVELOPES
- LARGE FORMAT PRINTS
- LETTERHEADS
- OVERPRINTING
- RAFFLE TICKETS
- B/W COLOUR COPYING

COMPETITIVELY PRICED

1 Turnpike Road, Connor Downs

Telephone 07799 411525 01736 754220

HAYLE FILM CLUB

Last month the Hayle Film Club had another sell-out crowd for the French hit film "Intouchables". The evaluation slips given to the participants returned a 98% excellent rating. The final film for this first season will be the popular recent film "Quartet" starring Maggie Smith and Billy Connolly, on Saturday 13 April at 7-30pm upstairs in the Passmore Edwards Institute.

We are expecting another capacity crowd, so please book ahead by calling Sarah Turk on 752319, by buying tickets in person at Store 28 (formerly Biggleston's) or on line at www.haylefilmclub.org.uk.

Tickets will be on sale at the door subject to availability - come early. Tickets are £5, £4 for members. More details on line.
Donna Anton, Chair, 753184



"I got a job at a bakery because I kneaded dough."



Hayle Rotary Club

Representatives of Youth Rugby, Football and Judo gave members a short talk on how they would spend £250 on the participants in their sport. Some interesting ideas were proposed and the cheques were presented by President John Lloyd. The club has always supported the work of Hayle Day Care centre and was pleased to part fund the purchase of a commercial microwave oven.

Members enjoyed a visit from Mayor Jayne Ninnis in which she outlined her aspirations for improving Hayle and its environment. A lively discussion followed centred on the future of Hayle.

Penpol School Youth Speaks team reached the District Finals and were placed 3rd in a closely contested competition. They had the best speaker on the day. Well done!

Next month we have two events that need the support of the people of Hayle. On Saturday 13th April we shall be carrying out our 'Know your Blood Pressure' survey outside the Coop Supermarket in the morning. This is part of Rotary's effort to support the work of the Stroke Association.

On Sunday 28th April we are hosting the Big Brunch at the Day Care Centre from 10am to 1.30pm. Adults,

CLEANER CARPETS Cornwall



- ✓ free quotes
- ✓ no hidden charges
- ✓ non toxic

- Covering Lands End to Truro
- Over 10 years experience
- Fast friendly service

For further details please contact
Pete Williams on 07901 803493
or email
pwpetewilliams@googlemail.com

St Erth Friendship Club

For the Over 60s
Enjoy entertainment,
crafts and games etc. in
a warm and friendly
atmosphere.

Come with us on coach
trips and make new
friends.

Tuesdays 2pm-4pm
St Erth School Hall
Only £1.50 per session
Enq 01736 850758

ANGOVE SPORTS

**COPPERHOUSE,
HAYLE**
TEL.: (01736) 752238

For all Sports Equipment,
Clothing, Footwear and
Fishing Tackle

Rackets Repaired and
Restrung

PASSMORE EDWARDS
INSTITUTE



MEETING ROOMS FOR HIRE

Hayle's Village Hall
has a variety of rooms
for hire, suitable for
2 to 60+ people.

For more information visit:
WWW.HAYLE-PEI.ORG.UK
Or call: 07851-183775

13-15 Hayle Terrace, Hayle, TR27 4BU
Charity Number 268429

£6.50; Children under 10, £4.
Plenty to eat, freshly cooked,
waitress service! All proceeds from
this event will be donated to Marie
Curie Cancer Care in memory of
Rotarian Edwin Wilkinson who died
last year.
Hayle Rotary Club is celebrating its
40th Birthday later this year! If you
would like to join us for an insight
into Rotary, please contact our
Secretary David Raymer on 755029.

A Safe Crossing For Caleb

Caleb Hollow aged 11 years old lost
his life crossing the busy road at
Loggans to catch his school bus
back in December 2012. Since then
his parents Dawn and Adam
Chapman have been campaigning
for a crossing to be placed at the
bottom of Loggans Estate to ensure
another tragedy doesn't happen
again, bearing in mind another child
a few years ago lost their life at the
same place.

Caleb's parents and campaigners
are continuing in their effort to get A
SAFE CROSSING FOR CALEB and
have had such great support from
the Police, Cheri Woodhouse of the
Cornishman, Spotlight TV, Pirate FM
and John Pollard Councillor and
most importantly all the local people
who have signed the on-going
petition.

The campaign is on-going and will

not stop until they get A SAFE CROSSING FOR CALEB and there is now an official web site www.calebscrossing.co.uk being made and donated by a new local business Calibre Computers www.calibrecomputers.co.uk, both Dave and Paul have been amazing and can't be thanked enough. An

official charity is in the process of being registered so donations can be made towards the Air Ambulance who played such an important part in all of this.

As quoted in a "Cornishman Comment" (page 26, Thursday February the 7th) was 'CALEBS LEGACY'

'The death of 11-year-old Caleb Hollow in December 2012 was a tragic loss for all who knew him and has had a serious impact on the local community in Hayle. In their grief, his family should be applauded for trying to create something positive out of his death.

They have been campaigning for road safety measures at the site where he died ever since and have

P.D.H Builders & Roofing
High Quality Guaranteed Work

Contact: Paul Moyle
07989 075517 01736 719469

5a Bodriggy Street, Hayle TR27 4NB
pdhbuilders1@hotmail.co.uk

FOR ALL OF YOUR BUILDING REQUIREMENTS

Computer / Laptop Problems?

I can restore your computer or laptop to full working order for a fantastic price

NO CALL OUT CHARGE

Professional repairs and maintenance of full systems and networks
Call today for a FREE no obligation quotation

- PC REPAIRS • PC NEW BUILDS • PC REBUILDS •
- PC UPGRADES • PC TRAINING • DATA RECOVERY •
- NETWORK INSTALLATION & MAINTENANCE

For a prompt and reliable service
call Tim Cogher at TeeCee Tech today



07730 283433



01736 850798

engaged hundreds of people in their quest.

It seems local councillors are doing what they can to support the campaign, but everyone involved in fighting for this in Caleb's memory is desperate to see action.

We would call on Cornwall Council to look seriously at implementing more safety measures on Loggans Road as soon as possible, before it's too late.

So please continue your support and you can now log on to the official site for up-dates, comments and dates of the up-coming demonstrations.

THANK YOU

Dawn & Adam Chapman
and Maria Ellis.



Strum- Alongers Guitar Club

Based at the Passmore Edwards centre on Wednesday nights at 7pm, visitors are made welcome to play or just sing along.

The Strum-Alongers give back to our community by giving concerts to 'memory cafes' and old peoples clubs in Penzance, Hayle, Carbis Bay, Camborne and Falmouth where residents sing with us to our 50s / 60s and 70s music and remember the good old days .

The idea for the club came from America where there are groups of people who come together to play music and have fun. When our organiser went over for a holiday, he was invited to one when they found out that he played guitar. He was amazed, the last time he had played with other's was back in the 60's in a rock 'n' roll band so he decided to bring the idea home.

He advertised for people who wanted to play – saying "if you play guitar and are banished to the shed or spare room then come on down." many ages turned up between 35 and the late 60's, who had played skiffle (Lonnie), old rock 'n' roll, Shadow's, Ventures, Simon and Garfunkel, folk, blues, Elvis etc. There was also a drummer and at

An advertisement for Cornwall Chiropractic Clinic. At the top is the logo 'ccc' in a cursive font, followed by 'CORNWALL CHIROPRACTIC CLINIC' in a bold, sans-serif font, and 'maintaining your lifestyle' in a smaller font below a horizontal line. Below this are four small images showing people receiving chiropractic treatment: a man being adjusted, a woman being adjusted, a woman being adjusted, and a woman being adjusted. Below the images is a grey box with the text 'Now Available at the Clinic'. Underneath this are two columns of services: 'Chiropractic', 'Chiroprody/Podiatry', 'Holistic Therapies', 'Diet & Nutrition' on the left, and 'Sports Injuries', 'Hypnotherapy', 'Acupuncture', 'Pilates' on the right. At the bottom of the ad is contact information: 'Tel: 01736 759088', 'enquiries@cornwallclinic.co.uk', 'www.cornwallclinic.co.uk', and the address '21 Foundry Square, Hayle, TR27 4HH'.

the time two bass players backing the up the music.

The way it was organised is brilliant, the words and chords are projected onto a screen and we play and sing from that, everybody has a pick of the stored songs and if you have a song to learn, we all have a go and play in the following sessions, in that way nobody is left out and there is a great feeling of satisfaction for all of us when a song comes together. We have all found the advantage of playing with others is that you play better --- you learn songs out of your comfort zone, even if they are not to your taste this always broadens your range of playing, making the satisfaction and fun in the music tremendous.

This has led to our people forming duo's, trio's, bands and orchestras, one couple in the early days went off to form a folk-blues Bob Dylan style group and another few have formed a rock 'n' roll band.

This is one brilliant idea from America!

For further information contact John on 01736 740333

BOOKS ON WHEELS

Cornwall Libraries offers a service to housebound clients, known as Books on Wheels. Members of WRVS deliver books to those library members who are no longer able to

Cabinetmakers & Joiners.
JOHN ANDREWS
Traditional Bespoke Woodwork

**Traditional Windows
Doors & Staircases
Hardwood or Softwood
Entrance Gates
Memorial Bench Seating
Joinery Fitting Service**

**07765 341 616
01736 741 064**

www.kleeneze-hayle.co.uk

All your favourite hard to find Homecare Health products and quirky gadgets

NOW ONLINE

This 88 year old British catalogue company has joined the Web! Order online but still receive the friendly free delivery and pay on arrival service from your local distributors

All online orders will receive a FREE Mystery product sample!

See you soon Nick & Jan Pincott

get out and about. Ill health and mobility force us to rethink our lifestyle.

Fortunately, our lovely volunteers are on hand to dispense books and CDs together with a friendly smile. Of course, while the books and CDs get service users through the quiet times the offer of company is most beneficial.



Volunteers will comment on how friendships have developed through these visits, indeed stories are told and swapped, books and authors discussed, however it's the minutiae of life that gets chatted about, enjoyed and chuckled over. The opportunity to share a cup of tea can provide so much pleasure!

Sarah Lane

BA PGCE TEFL

English Tuition

*Primary, Secondary, Adults,
one – to one or groups.*

First half session free.

Tel 07952599798

E-mail sarahlane.gb@gmail.com

Of course, technology within libraries has developed so much, that when you can't quite place the author of that fantastic review you heard on the radio or saw in the magazine then you can track it down. And whilst books in large print and CDs remain widely available we have access to net books and a reservation system courtesy of www.cornwall.gov.uk/libraries.

Our Housebound Clients maybe physically frail but they remain cerebrally active through reading and listening; choosing their preferred genre.

If you know a family member, neighbour or friend who may benefit from this service please contact:

Sue Pavey

WRVS Home Library Service,
Redruth Library, Clinton Road,
Redruth TR15 2QE

Mob: 0796 851 5571

Email: spavey@cornwall.gov.uk

LESSONS IN PIANO

For fun or examinations.

Experienced teacher

With reasonable rates.

Children & Adults

01736 752335

Hayle Model Railway Club Exhibition 25th & 26th May 2013

Our popular exhibition is at the Day Care Centre, Commercial Road, Hayle, TR27 4DE, a wheelchair friendly venue with disabled access and facilities.

Sat 10.00 – 5.00. Sun 10.00 – 4.00

Admission:

£3.50 Adults: £2.50 OAP: £2.00
Children: £8.00 Family (2+2). (under 5 free).

We are sponsored by *Kernow Model Centre*

Layouts on display-

- ***Four Laynes 3- N***
- ***Little Oak Works- N***
- ***Port Perran - N***
- ***Tregellas - N***
- ***St. Michaels - 009***
- ***Penhallick- 00***
- ***Royksop - 00***
- ***Thomas- 00***
- ***Millside - On30 American***

- ***Stoney Middleton - O-16.5***
- ***Moorside - O***
- ***Osney Town – O***

Trade by: *Team Track Trading, Kernow Model Centre and Andy Lynch Demos and Societies*

More info:

John Hayward, 01209 213554 or
accounts@teamtracktrading.co.uk

Do you enjoy singing? **LOCAL VOCALZ!**

A lively adult choir for the West Cornwall area, singing a wide range of music.
Mondays, 8.00 pm to 9.30 pm at Passmore Edwards Institute, Hayle
why not come along to a rehearsal?


£3.00 per session
Music reading desirable but not essential - we'll teach you!


Details 01736 759944


www.localvocalz.co.uk


MUSIC LESSONS

Piano, keyboard, organ, singing and theory of music

 Beginners to diploma level

 Adults and children

 Examinations or fun!

 No group tuition whatsoever — strictly "one to one" basis

NEIL SHEPHERD

Details 01736 759944

www.neilshepherd.org.uk



Prescription.

A nice, calm and respectable lady went into the pharmacy, walked up to the pharmacist, looked straight into his eyes, and said,

"I would like to buy some cyanide."

The pharmacist asked, "Why in the world do you need cyanide?"

The lady replied, "I need it to poison my husband."

The pharmacist's eyes got big and

he explained, "Lord have mercy! I can't give you cyanide to kill your husband, that's against the law! I'll lose my license! They'll throw both of us in jail! All kinds of bad things will happen. Absolutely not! You CANNOT have any cyanide!"

The lady reached into her purse and pulled out a picture of her husband in bed with the pharmacist's wife.

The pharmacist looked at the picture and replied,

"You didn't tell me you had a prescription."

Barry Thomas

THE COPPERHOUSE CLINIC

5 Market Square, Hayle, Cornwall, TR27 4EA.

www.thecopperhousedclinic.co.uk

T: 01736 75 75 24

CHIROPODY - PODIATRY - CHIROPRACTIC

DEEP TISSUE MASSAGE

BEAUTY AT THE CLINIC



HAYLE & DISTRICT BOWLING CLUB

The sun is coming out for the long hot summer we have ordered, so come along and join us on our:

OPEN DAY SATURDAY 13th APRIL at 2pm

Our bowling green has an artificial surface which allows us to play most of the year, even in the snow.

We will welcome you, give you a cup of tea and a free hour or so of having fun playing our game.

If you would like to bring the family please do as we have bowls to suit all sizes. You may just want to sit, Relax, and watch our game of bowls

while sipping a cuppa.

**Look forward to seeing you on the
13th April at 2pm.**

**Contact Adrian 753161 or Kath
753346**

Harvey's Foundry Trust Needs YOU!

After 10 years of hard work Harvey's Foundry Trust is in a position to support a heritage and cultural centre in Hayle.

We have a great design team on board and with the support of our board members and local historian

CLIFFORDS

Plumbing & Heating

Boiler Changes - Full central heating - Servicing - Landlord Certificates

Dripping taps to complete bathrooms - All plumbing work undertaken

Free quotations

Local, Reliable, Clean and friendly service

01736 755170

07761 938183



Fully Qualified, Gas safe Registered and Water Industry Approved

www.waterworkscornwall.co.uk

Brian Sullivan we are ready to take this exciting development forward. The centre will tell the story of the history of Hayle through a core exhibition that will be free and open to the public as well as exhibitions, events, summer workshops for the kids and guided walks and tours around Hayle.

The centre will be based in John Harvey House on Foundry Square. We are looking for volunteers to help run the centre, no matter what age or experience as long as you have a passion for history and your town. We are looking for people to fulfil a wide range of roles from tour guides, assistants with schools workshops, researchers and PR, Web design and It to administrative tasks such as fundraising.

It does not matter how much or how little time you can give it will all be much appreciated!

If you are interested in getting involved please call Laura Christon on 017367 757683 or email her at laura@harveysfoundrytrust.org.uk



Hayle Day Centre

Is a haven for the elderly, situated in the very pleasant surroundings of the Hayle Estuary, it has a large conservatory overlooking the river, on which graceful swans swim by and many other species of birds nest on the riverbanks, which are a delight to watch.

Inside the conservatory you will find large comfortable armchairs, occupied by normal people, between the ages of 60 and 99, chatting away, playing games, doing needlework, painting pictures, having computer lessons; there is always something going on that you can join in with if you choose. Also in the afternoons we have a singsong when

Tel: 01736 - 757818
Mob: 0779 263 2635

Nick Farrar

Property Maintenance

Windows-conservatories - Kitchens - Carpentry - Fibre Glass Flat Roofs

a choir or entertainers spend time with us. The meals are delicious and cooked on the premises. The staff and volunteers are wonderful, and the care excellent. As I look around me I realise the people I have spent the day with are not just ordinary folk, they are people who have helped make history. Fought for the freedom we have today, the benefits, the hospitals, medical care and our human rights, among many other things. They also cleared up the debris and destruction left by the war, and made the country fit to live in again. Those who were too old or too unfit for the forces joined the Air Raid Patrol, the Home Guard, or similar volunteer services, rescuing people from bombed buildings, putting out horrendous fires and tackled other dangerous jobs with no thought for their own safety. Recently it was said the elderly such as these ones are living too long.

No one will ever be able to repay these ones for the sacrifices they have made but Hayle Day Centre is certainly taking the lead in showing how it is done.

Monica Riley.

BIZ AND BYTES

07974 647524 01736 755971

If you require computer assistance, either training or to resolve a problem then give us a call. Visits arranged to suit you.

Looking after the home user and small business.

**WEBSITES • BROADBAND • TRAINING •
COMPUTER SUPPLY • TYPING**



www.bizandbytes.co.uk
enquiries@bizandbytes.co.uk



WEST CORNWALL MOBILE FOOT CLINIC

**For the professional
treatment of:**

Corns & Callus

Diabetics

Verrucas

Athletes Foot

Thickened Nails

Fungal Infections

Ingrowing Toe nails

Can't cut your own nails

**All in the comfort in
Your own home**



Peter Williams

S.A.C.Dip FHPT/FHPP

Tel: 01736 751752

Mob: 07901 803493

**Evening and weekend calls available
pwpetewilliams@googlemail.com**



**Hayle in
Bloom
Celebration
Day**

Sunday 23 June 2013

**Come and join us for our third
Celebration Day and have an
amazing time.**

**We need volunteers to make
this possible. If you would like
to help, please phone 01736
756772 and leave your name
and contact number. If you**

**would like to book a space for
your stall please call Bob Mims
01736 757910**

**HAYLE IS OUR
BUSINESS**

Let me explain; Hayle's Chamber of Commerce might be at the State Retirement age but will always be as savvy as its experienced membership. In its 65 years it has been a union of small businesses although, in the beginning, some of the 150 member businesses were quite large concerns but the closure of Harvey-UBM levelled us all out. As with any union, we look after each other and help each other which we might call "networking" - in other words sharing

threads 
Creative Workshops and Supplies



Do you like sewing?
Would you like to learn?
How about learning to refurbish old furniture or
re-vamp an old lampshade?
Have a go at Patchwork, bag-making, felting,
crochet and lots more!

- ✔ Meet new people.
- ✔ Have a go at something new.
- ✔ Go home with a finished project.

**Come and see us at -
Foundry Farm, Hayle
TR27 4DW**

For details of upcoming workshops and to book your place go to our website:

www.threadscornwall.co.uk

or contact us - email: info@threadscornwall.co.uk tel: 01736 759598

what we know and learning how to stay in business. We do get involved in what's going on in spite of many a cry from an old Councillor "What the 'heck's' it got to do with the Chamber?!". We are part of Hayle and if development threatens some of our traders we shout loudly but our way of looking at things isn't necessarily the same as the Residents Association nor carries the same logic as the Council.

While some members of Hayle Chamber may be in business in Hayle their customers may be further west, even international. Other Members may only be concerned with tourism and are on the outskirts of the Town, yet others are trade and service providers while retail is directly involved with visitors and residents. We all have one thing in common – to stay commercially alive. We have to focus on the word "business".

However, it is in our interest to have the best for Hayle and the only way we can manage that is to shake hands and not fists, to work constructively with the Council, with the residents and with the users and developers of the Harbour. This brand new vision we are being shown of the Town Team with all of us drawing the plans of our success, not some distant authority, must be made to work. How will we do this? We must use the business common sense our 65 years has given us and work without rancour, so often seeping from all interests in this Town, and make Hayle the beating heart of West Cornwall.

That must make Hayle all our business.

Jeremy Joslin

President, Hayle & District Chamber of Commerce



**R.N.L.I.
A.G.M.**

The Hayle branch of the RNLI are holding their AGM on Wednesday 6th May at 7.30pm at the Lifeguard Centre, Hayle Industrial Park, Marsh Lane, Hayle. (next door to Hawkins Cars). Anyone interested in supporting this vital rescue service will be most welcome. Contact: Phil Drew 01736753567.

HEYL ST. PIRAN SINGERS

Heyl St. Piran singers will be holding a "Spring Fayre" on Saturday 6th. April at Phillack Church Hall, starting at 10 am until 2pm. There will be a variety of stalls including tombola and a cake stall. Do come along and see what's on offer. The choir will also be holding an "open evening" on Thursday 11th April during our usual choir practice, from 7.30 to 9.30 pm. If you enjoy singing do come along and to this "taster" evening, tea and biscuits will be available and you

will be able to meet other members of the choir, who are a friendly and supportive group of ladies. We are looking forward to a busy year and to

learning more songs for our ever expanding and popular repertoire, there really is something to suit all tastes in the range of music we sing. The choir also has a lively social side and has enjoyed trips to sing with other ladies choirs, and is also available to sing at weddings and other social events.

Rehearsals take place every Thursday at Hayle Methodist Church Hall from 7.30 to 9.30 pm.

**Contact Ann 0173675233, or
Geraldine 01736 755162.**

HUNTINGTON'S DISEASE

Previously, and widely known as Huntington's Chorea, Huntington's

W J WINN FUNERAL DIRECTORS

We are here to help you 24 hours a day

- Funeral Pre-Payment Plans
- Memorials
- Private Chapels of Rest

WJ WINN

Trenwith Terrace
St Ives TR26 1QE

Tel: 01736 793029

WJ WINN

69 Fore Street
Hayle TR27 4DX

Tel: 01736 752124

CHARLES BRYANT

North Road, Goldsithney,
Cornwall TR20 9JY

Tel: 01736 710318

MARAZION FUNERAL SERVICE

Back Lane, Marazion, Cornwall TR17 0HE

Tel: 01736 710318



Part of Dignity plc. A British Company.



disease (HD) is not well known unless it affects your family or you are involved in providing care and support to someone with the condition.

Latest studies reveal that it has a prevalence of at least 12.3 per 100,000 people aged 21 and over, a dramatic rise upon previous estimates.

In Cornwall there are at least 120 people known with the condition and a further 130 and probably a lot more, known to the national charity Huntington's Disease Association, who are 'at risk' of developing the condition. By this I mean they have a 50:50 chance of inheriting the condition at birth. Helpfully, in 1993,

a simple and accurate blood test was developed that can reveal the presence of HD.

Although we can't cure HD as yet, treatments can be very effective especially for depression and movement disorder.

In Cornwall, there is a very active branch of the national Huntington's Disease Association, formed to raise awareness of the condition, and to provide information, advice and assistance to families affected by the condition. The Regional Care Adviser is Charles Whaley, who can help you with the changes taking place currently with Incapacity Benefit changing to Employment Support Allowance, and Disability

WONDERFUL WILDLIFE AND INDOOR PLAY AT PARADISE PARK!

Cornwall's award-winning wildlife sanctuary with rare tropical birds, penguins, otters & farmyard friends. Plus fantastic JungleBarn indoor play and Paradise Island outdoor play.



Lots of fun for
Easter - new
timetable starts
29th March plus
'Easter Egg Trail'
(Mar 29th to 14th April)

FOR NEWS AND SPECIAL OFFERS JOIN US ON FACEBOOK



Paradise Park, Trelissick Road, Hayle
Open every day at 10am Infoline: 01736 751020 www.paradisepark.org.uk

Living Allowance moving to Personal Independence Payments. Entitlement to benefits and making claim for benefits can be very confusing, so if you need help let Charles know. His telephone number is 01579 345480 email charles.whaley@hda.org.uk The national website is also very informative at www.hda.org.uk . Here you will find links to the local Cornwall branch and also the Regional Care Adviser who supports people and families affected by the condition.

Charles Whaley, Regional Care Adviser, Huntington's Disease Association.

HANDYMAN
EXPERIENCED & RELIABLE

“NO JOB TOO SMALL”

Completing all those jobs
you've been meaning to do!

Painting / Decorating
Repairs / Flat-pack Assembly
Fencing / Sheds

CONTACT
RICK HARVEY
01736 752811

LINK WITH THE GAMBIA

Hayle Methodist Church has for many years been part of **West Cornwall Churches Link with The Gambia**.

The Republic of Gambia is the smallest country in West Africa, surrounded by the country of Senegal except for a short strip of coast.

In area and population it is around three times the size of Cornwall. During the years the link has existed monies have been raised for a Christian Learning Centre at Janjabureh, a Nursery School and milling machine at Banni and a clinic at Jamelli. Other projects have included a school kitchen and

PLANTECH
THE FRIENDLY RELIABLE SERVICE

- Lawns cut and borders weeded
- Hedges trimmed
- House, garden & building waste taken
- Garden clearance work
- Gravel, sand, topsoil delivered & laid
- Garage and loft clearances
- Free no obligation quotes

(Tel) 01736 754401 / 07979546434



teacher's house.

Alongside all this, the education for many young people has been paid for by many people in Cornwall, as well as other groups throughout the country.

Recently money has been donated to help a three year old girl, Anna, who was born with a badly deformed leg and had never walked. The leg had to be amputated. WCC Link with the Gambia supported Anna and her parents as they travelled to Senegal for her operation, helped with travelling and accommodation expenses and Anna's time in hospital. They have now provided an artificial limb which will have to be updated as she grows.

The team has returned from West

Africa with many happy memories, but one of the highlights has been to see Anna walk unaided. Her Grandfather told us that before the operation she sat on her own as her friends played, now "her friends have to be quick now or Anna gets there first"

The team's work will be ongoing and members hope to return to visit their friends in 2014



"I stayed up all night to see where the sun went. Then it dawned on me."



PHILPS
FAMOUS PASTIES OF CORNWALL

Philps Bakery baking Cornish pasties 7 days a week.

Why not send pasties to relatives out of the county using our pasties by post service?

Please visit our website

www.philpspasties.co.uk or call us on 01736 755661.



Millpond Update

'Following Nature's Way'

It's amazing what a couple of sunny days will do! Most of our ducks suddenly got the idea that spring had arrived and departed for their nesting sites around Copperhouse Pool and Angarrack. That just leaves the 'Heinzers' and a few of our more senior ducks on the ponds until the end of July when the drakes return to moult. Our overwintering Merlin has been logged on the Bird Watch website as being a female. Previous visitors have been young males and because a male has also been seen it could be possible that we may have a pair this year. Two Greater-Spotted Woodpeckers have also been seen on the Rope Walk. Having removed three very flimsy and dangerous attempts to replace the causeway to the island it was decided, in the interests of health and safety, to take away the material being used and put it through the

shredder. It is hoped that it will be possible to build a proper walkway across to the island as part of the site upgrade. This will keep the river open and flowing properly. Several trees needed remedial work and it is hoped that the Royal Ferns growing on the bank will also regenerate.

The heavy rains of 2012 have increased the water levels and improved the water quality in both ponds. There has been little silting because the two main sources of our previous problems have now been dealt with. So the 'Brown Windsor Soup' has thankfully disappeared. I hope that ideas are being sought for the future management of the ponds, and the best way is to allow nature to take its course.

Over the past couple of years an area of marginal wetland has been created in front of Duck Island, which, together with the cress beds, has become a very important habitat area. The Millpond has a small flock of egrets and it is a vital haven for them. So instead of the constant and very expensive threat of sending in the digger, try the much more inexpensive practice of working with nature for a change.

This irreplaceable habitat area should be allowed to evolve naturally, but I still fear for its future. All I can hope for is that someone with enough sense to really care will do the right thing by the ponds and our wildlife.

Georgina Schofield
Volunteer Wildlife Warden



David N'jie
PAINTER & DECORATOR

07944 156995 01209 831397

dn-jiepainter-decorator@hotmail.com
Trethannas Cottage, Praze-an-Beeble
Camborne TR14 0LH



Do You Know What's on at Your Local Village Hall?

Spring sees the start of a ground-breaking course to be held at Passmore Edwards in Hayle, MINDFUL MOTHERHOOD. A collaboration between local business Love Baby Yoga and Mindfulness Cornwall.

Mindfulness is being aware of your experience, moment to moment as it happens, without pushing it away, wanting to make it stay, or judging it. It is a way of approaching all your experiences with open eyes and open heart. The focus is on encouraging mums and mums-to-be to become more aware of their present moment, increasing their ability to tolerate and regulate emotions without resorting to conditioned behaviours, offering skills invaluable to healthy parenting and conducive to experiencing the tremendous enjoyment and opportunity for adult development that becoming a mother offers. Practising mindfulness develops a mothers' capacity to be fully present more often, with themselves and their babies / children / partners with greater love, acceptance and kindness.

Jan Llewellyn is a director of Mindfulness Cornwall CIC (www.mindfulnesscornwall.co.uk), a company that offers Mindfulness Based Stress Reduction courses in

Keeping Fit Can Be Fun!!

**Mon 10 am Circuit
training for over 50s**

**Thur 10am Extend
Movement to music over
60s at the Passmore
Edwards Institute**

**Wed 2pm at
Leedstown Village
Hall**

**Start the week feeling
good!**

Sylvia 01736 757560

X EXTEND



Cornwall. Jan was delighted when Mandy suggested offering this course. She has found mindfulness and yoga helpful during periods of challenge and is passionate about sharing these practices. Jan's background is in mental health nursing and she was drawn to this field following her own experience of postnatal depression in 1991. Mandy Adams runs Love Baby Yoga (www.lovebabyyoga.co.uk) a local business offering specialist yoga classes and courses covering the pre and post-natal periods. She is committed to supporting and empowering new mums through one of the most fundamental times in a woman's life. Her background is in Women's Health and Education and

she began her business after the birth of her first son in 2008. Born and brought-up in Hayle she is proud to return to raise her family and offer her life's work right on her doorstep! The course will be at The Passmore Edwards Institute on 9 Saturday mornings 11th, 18th, 25th, May, 3rd, 8th, 15th, 22nd, 29th June & 6th July from 10.00 – 12.15pm.

The first session on the 11th May will also serve as a FREE taster/ orientation session. The group will be limited to 10 participants and the cost for the full course of 9 sessions will be £200.

Please email Jan on jan@mindfulnesscornwall.co.uk or call 07752 229121 to find out more and to reserve your place.

CALVIN GOODWIN

**Painter and Decorator
City and Guilds qualified**

No job too small

Tel: 01736 755639

Mobile: 07594 031765

Please telephone to discuss your requirements or to arrange an appointment for a no obligation quote

www.goodwindecorating.co.uk

Lavender's blue **Garden Nursery**

Locally sown, grown and nurtured plants

1 Penpol Avenue, Hayle, TR27 4AQ

(Opposite Penpol School)

01736 754844

**A wide range of seasonal bedding plants, perennials, herbs & alpines.
Hanging baskets made to order. Free delivery in the Hayle area.**

www.lavendersbluenursery.co.uk

Open Tuesday to Sunday

Hail to Heyl / Hayle

Are you proud of Hayle?

Do you know that Meritorious, on the ground floor of Foundry Shopping Village, (used to be known as *Pratt's Market*) is a shop where there is a multitude of articles with an image of Hayle. These are not transfers, they are printed in house. You can also have your own picture printed. Don't go to Tesco or Vistaprint, support a local business! (cheaper than them too!)



"When chemists die, they barium."

MERITORIOUS CUSTOMIZED S

Unique from us to you
www.meritoriouscrafts.co.uk

Foundry Shopping Village
11-13 Chapel Terrace
Hayle TR27 4AB

Tel: 07511167302
Email: meritecustomized@aol.com

Enormous range of unique products/gifts ready to be personalised just for you. Or you can choose from our ready printed Stock range.

Men/stag night T-Shirts, Real Slate And acrylic Photo Blocks, Mugs, Bags, Scarf's, Presentation Plaques/Plates & MUCH MUCH more.

Complete design & print service using our vast range of images & texts or maybe using your own design/s. Everything customized to the finest detail & specification For you, by us, here in Hayle

We do not use Transfers

What would you like printed on yours ?

TJ'S CARPETS LTD.



**New Showroom at Tolroy Garage,
58 Mellanear Road, Hayle TR27 6HF**

Come and see our wide selection of carpets & vinyls,
laminates and patterns

Our famous home selection service still available

Full range of flooring accessories

Call Now! 01736 757540 or 07976 608215

Free measuring & estimate service

"Before You Buy, Give Us A Try"

OLD RAILWAY BRIDGE

Dear Editor;

It is hard not to be a little cynical about the future of Hayle if you are resident. We have been promised much over past decades and seen most promises fail to bear fruit. We must have cornered the market in artists' impressions and feasibility studies but we still confront a wretched wasteland where any self-respecting town would have a captivating waterside development in harmony with the stunning seascape. Now we must believe that, at last, we are near the promised land. Have we not had a new bridge giving us access to the concrete delights of a North Quay readied for development? Surely this is the "lift off". Or is it? ING must be judged by what they have provided so far. Not the development mentioned above because that was funded by Cornwall Council and Brussels. The most obvious signs of ING's contribution is the conversion of pot-holed derelict ground into Pay and Display car parks scorned by all.

I have taken a close interest over the last five or so years in the failure of ING to

restore the bridge over the old railway cutting; the closure of which by the Health and Safety Police denied many pedestrians and cyclists in Hayle a Bridleway alternative to the busy main road between Foundry and the War Memorial. Initially ING denied that the bridge was theirs-presumably to avoid having to pay for its restoration- but when they were eventually compelled to accept responsibility for the bridge they simply ignored directives from Cornwall Council to repair it. Only threatened court action seems to have "galvanised" them into undertaking to repair the bridge. When last I checked with ING I was assured the matter was "in hand." I do notice some signs of scaffolding at the Bridge now but no evidence that it

GUITAR LESSONS

LEARN TO PLAY SONGS *YOU* WANT TO PLAY STRAIGHT AWAY
EASY-GOING LESSONS -STYLES FROM ROCK & POP TO FOLK &
BLUEGRASS—ALSO HELP WITH MUSIC THEORY—
ELECTRIC/ ACOUSTIC AND BASS GUITAR—BANJO
AND UKELE
ALL AGES AND ABILITIES WELCOME.
REASONABLE RATES

PHONE 01736 753709



HARVEY

THE HOLIDAY COACH NEAR THE COAST



LARGE FULLY ENCLOSED GARDEN
TRAIN VIEWING DECK
SWINGS AND PLAYHOUSE
COVERED CYCLE STORE

WWW.RAILHOLIDAY.CO.UK
01503 230783

will soon re-open. In connection with this issue I have been in communication with Countryside and Enforcement Officers at Cornwall Council, our MP, Town and Cornwall Councillors so you can be sure I am not making this up—hence my cynicism. If it takes so long NOT to repair a bridge, what hope is there for the transformation of Hayle Harbour in the life-time of your readers? We may get an ugly and unwanted Supermarket stuck on what looks like a bomb site and I suppose we must be thankful for that.

Sincerely (Details Supplied)

Note. A check with a source at Cornwall Council states that work on the bridge is due to start on 25th March, so it MAY be underway by the time you read this.

*There is at the time of writing no start date for the work on South Quay, but planning permission has been sought for the Renewable Energy Industrial Park on the old Electricworks site, for which it is understood funding has been found.
ED.*

P G FRANKLIN

Chapel Hill, St Erth

Carpenter & General House Repairs

Garden Landscaping

NO JOB TOO SMALL

Telephone: 01736 757360

Mobile: 07778 739341

Alistair Kinsey

Independent

Hearing Aid Audiologist

Www hearingmobility.co.uk

01826 617883

**CLEAR SPEECH ANYWHERE
WITH MOXI PRO.
TV TOO LOUD ?
FAMILY MUMBLE ?**

**There is an option for you
at**

Keast Opticians

18 commercial Rd

Hayle

01736 753145

Home visit charge



**Want to play music?
You're never too old!**

**Learn music the fun way
with Graham Smith**

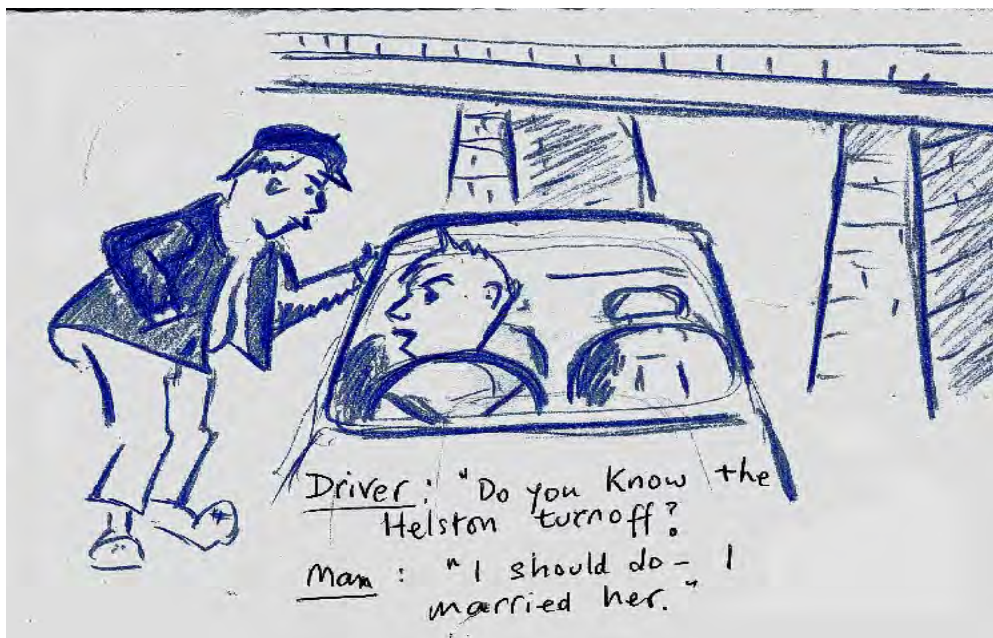
I'm a Registered Guitar tutor, a coach and session musician with over 30 years' experience. I believe that anyone can learn to play. I can help you to learn guitar, bass guitar and blues harmonica and to write songs and record them.

Call me on 01736 740141

(based near Penzance)

graham@music tuitioncornwall.co.uk

www.music tuitioncornwall.co.uk



St Erth & Hayle Cars



4 - 8 - 16 Seat Vehicles.
8 Seat Party Buses.
Polite, Friendly Staff.

Local Trips
Sea & Airport Transfers
Tours & Much more!

01736 754000 or 01736 754040

www.sterthandhaylecars.co.uk
info@sterthandhaylecars.co.uk

50 YEARS AT "THE BUCKET"

St. Austell Brewery's longest serving tenant will this month celebrate a half century behind the bar. Rick Shackleton has been at the



LINDSAY'S DOG GROOMING

*Dog grooming for all sizes,
breeds & coats.
Specialising in Poodles.*



For more information,
contact Lindsay on
01736 753864 or 07792 849240

.....
Situated at Connor Downs in Hayle *Local collection & delivery*

PAUL SHERRIS

Hayle's only
local family owned
**FUNERAL
DIRECTOR**
Private Chapel of Rest
Pre-Payment Plans
available
West Terrace, Hayle.
TR27 4JS.
01736 753969
Day or night

Bucket of Blood pub in Phillack, Hayle, since 1963 when his parents Dick and Ida took over the unusually named 18th century pub.

After Rick's father passed away in 1965, Ida ran the inn until 1974 when she handed the reins to her son.

Nowadays, the Bucket of Blood is still very much a family business, with three generations contributing to its continuing success and welcoming atmosphere.

Rick and his wife Sue are joined by son Philip, who looks after things when they are away, and Philip's 21-year-old daughter Alannah who helps out behind the bar.

Saturday March 23 marked 50 years to the day that the family arrived at the Bucket of Blood. The

family were hosting a big party for the community at the pub to celebrate, with a hog roast and reduced prices at the pumps.

Rick, 68, said: "Things have changed a lot in the past 50 years, in many ways the town and the industry are unrecognisable.

"It certainly hasn't got any easier running a pub, there are plenty of challenges and lots of tenants don't make it nowadays. I always think there's no point despairing when things get hard though, you just all muck in and carry on."

"We still enjoy ourselves every day; we wouldn't be here if we didn't. The whole family are looking forward to celebrating our anniversary – here's to the next 50 years."

M J MARINE ELECTRONICS

For all your marine electronic
installation supplies repairs
and service
Agents for Furuno
Standard Horizon Icom
Simrad & Lowrance

**Unit 4 Albert Pier
Penzance TR18 2LL**

**01736 330200
07971 281 888**

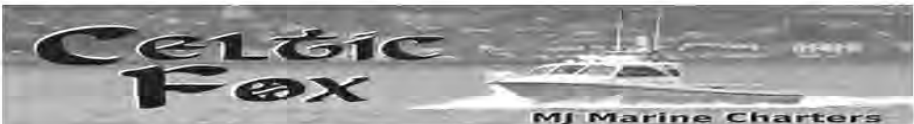
FURUNO
STANDARD HORIZON

SIMRAD

ICOM

LOWRANCE

**Join us on board Penzance's finest angling boat
01736 330200 or 07971 281 888
www.penzanceboatfishing.co.uk**



Ken Ascott, West Cornwall Area Manager for St Austell Brewery, said "I've had the pleasure of working with Rick and his family for the past ten years. It is a rare thing in this day and age to have so many generations dedicated to a pub. "The Shackletons are St Austell Brewery's longest serving tenants and we have built up a great relationship. I'll certainly be raising a glass to them on the big day."

Now the only pub in England with the name, the Bucket of Blood refers to an episode some 200 years ago when the landlord went outside to draw water from the well. Pulling up the pail, he found the water to be bright red, as a corpse has been thrown down the shaft.

Congratulations to THE BUCKET from THE PUMP.



Welcome all you fishermen
 Wherever you may be
 Calvin's here at ANGLER'S DEN
 With lots for you to see.
 There's rag and lug and maggots
 Just wriggling for the chance
 To get on that hook and do their
 job
 Out-do the squid and launce!
 There's lures of every type and
 shape
 Just waiting for that hit
 Advice is given freely
 If you are needing it.
 There's all the gear you're wanting
 From hooks to rods and reels
 Whether you are fishing
 From banks, beach, cliff or keels.
 Whatever you dream of catching
 Carp, minnow, bass or whale
 Be sure to visit ANGLER'S DEN
 Behind CENTRAL GARAGE, HAYLE

Angler's Den
 Open Sat 9am – 6pm
 Sun, Tues, Thurs 10am – 2pm
 Mon, Wed, Fri 6pm – 8pm
 Tel: 07733 275 2524 or
 07923 126 327



Swimming Pool Supporters!

Hayle open air pool's supporters group has formed and had meetings at which a variety of ideas for improving the Pool have been presented.

We can't yet tell you which dates the future meetings will be on as the Pump is published before the meeting where we can set the dates! We have the makings of a good group and we are being supported

by the Hayle Model Boat Club who use the Pool in the closed season for model boating.

We are investigating sponsorship, and signage, and looking at the possibility of a shelter inside the pool, BUT are keen to hear more ideas, and welcome more members! For details of meetings and info contact Liz Tytler at the Riviere Cafe at the pool, call 01736 448539 or email liz.tytler@talktalk.net



"I changed my iPod name to Titanic, it's syncing now."

JC ELECTRICAL

Your complete 24 hour Electrical Service

**Rewires • New Build • Lighting •
Showers • Extra Sockets • Heating**

City & Guilds Qualified (Tests to BS7671)

Part P registered

Prompt and reliable friendly service

Free estimates and all work guaranteed

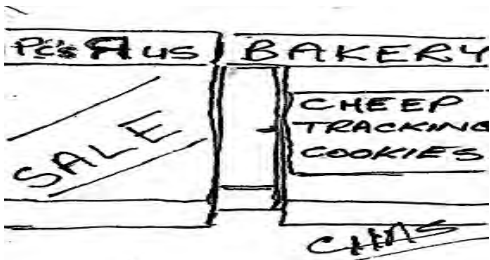
Office: 01736 754543

Mobile: 07739 577549



BODRIGGY ACADEMY CHOIR WINS AT CORNISH MUSIC FESTIVAL.

Well done to Bodriggy Academy School Choir, distinction winners at The Cornwall Music Festival 2013. Singing 'Any Dream Will Do ' and 'Zip A Dee Do Dah', the choir led by Mrs Blythe did Hayle proud!



Classes at the Passmore Edwards Institute

Suitable for all ages and abilities

Classes run throughout the year

Mondays 7.00-8.30 pm

Tuesdays & Fridays 9.30-11.00 am

Please phone Gwyn for details on

01736 791784

or

07815945695



17th edition
BS7671

All aspects of Electrical work undertaken

Free Estimates, No Job Too Small
Prompt, Reliable, Fully Qualified, Est. 1972

Webb & Philp Ltd electrical contractors



- ✓ Re-Wires
- ✓ Security
- ✓ Showers
- ✓ New Build
- ✓ Testing
- ✓ Maintenance
- ✓ PAT Testing
- ✓ Extra Sockets & Lights

Telephone/Facsimile 01736 753651 Mobile: 07768 210227
email: electricians@webbandphilp.co.uk

Hidden words Quiz

by **Cleverclogs**.

This time we are looking for things **that gardeners use.**"

1. One went to finishing school to develop personality etc.
2. I'll be waiting, ready to go. Just ring when you're set to go.
3. It's your turn Chris, take your pick of what's left.
4. I started talking and the kestrel listened, cocking its head.
5. It was a funny looking beast with mulish ears, pink snout and a sticking up tail.
6. It's complicated, Eric loves Mary, but Greg loves her too. She doesn't like either very much.
7. We camped on the shore of scenic Loch Ewan.
8. Well, I especially enjoy watching wildlife programmes.
9. He is respected for knowing all there is to know about gardening.
10. I went to Biggleston's for a key to be cut, but it wasn't there!
11. I like the older re-runs of Last of the Summer Wine - Compo's terrible.
- 12 I have grown a new radish - redder and hotter than any I know.
13. You can build a new bicycle from any basic old frame and add all the modern extras.

14. Where we camped by the loch, there was a tumbledown fisherman's hovel.

15. We went into this bistro - well, it was so horrible we came straight out again!

Answers to quiz 107 "Used in the kitchen"

1. Whisk. 2. Trivet. 3. Grater.
4. Mincer. 5. Ladle. 6. Plate.
7. Dish. 8. Timer. 9. Fork. 10. Corer.
11. Sieve. 12. Apron. 13. Board.
14. Pan. 15. Sink.

*There were **32** entries, 30 correct, and the winner, chosen by a Random Number Generator on the Internet was No. 17, **Mrs. J. Winn from Rosudgeon**....An appropriate surname!!*

Congratulations! Mrs Winn wins a £20 voucher that can be spent with any of our listed Hayle Pump advertisers!

To win a prize voucher worth £20 to be spent with any of our advertisers, send your answers along with your contact details to

editor@haylepump.org.uk

*or one of the drop off points listed inside the front cover. The winner will be drawn at random from all correct entries received by **13 May 2013**...*

(NOTE: EARLIER DEADLINE!)

Regular Club Listings

Hayle in Bloom. Last Monday of the month, except for Aug & Dec. Held at Hayle Rugby Club 7pm. www.hayleinbloom.org.uk

Model Boat Club. Wednesday evenings 7-9pm & Sunday mornings 10-12 noon, meeting at green chalet by Hayle outdoor swimming pool. Tel: 01736 755516, or Les on 01736 754254

Hayle & District Bowling Club. 10am every Sunday. Short Mat bowling indoors during winter 01736 753565

Royal British Legion. Passmore Edwards Institute. Every Mon. Wed.& Fri evening, and Sat.afternoon. Tel.758482.

St Ives and Hayle Community Choir. Tuesdays, 2pm St Anta Church Hall, Carbis Bay. All welcome Neil Shepherd 01736 759944 www.cornwallcommunitychoir.co.uk

Hayle Darby and Joan Club. Fortnightly on Fridays at 2:30 pm. Methodist Church Hall. Tel 01736 711134

Hayle Flower Club. 4th Wednesday of the month 7.30pm, Hayle Daycare Centre in the conservatory . 01736 757028.

Hayle Harbour Users Association. First Monday of each month, 7.30pm, Royal Standard Pub. R.Lello 01736 757632

Hayle Judo Kwai. Meeting at The Downes, Foundry Hill,.Tues & Thurs. Sensei Richard 01736 740723 Lucy Alldritt, sec. 07581490714

Hayle Library Reading Group. 2.00pm first Wednesday of each month. Free. Contact Hayle Library.

Hayle Line Dancing Club. Every Mon. at Hayle Methodist Church 7.30–9.30pm Adults £3, Children £1 (includes light refreshment). Car parking available. Tel 01736 752610.

Hayle & District Lions Club. 2nd and 4th Tuesday of every month, 7.30pm at

Passmore Edwards Institute. Tel. Mel George 01736 756484

Hayle Local Vocalz. Monday evenings 8pm, Passmore Edwards Institute, Neil Shepherd 01736 759944 www.localvocalz.co.uk

Hayle Meanderers Every Wed.10.30am Commercial Road car park. Free, + contribution to carshare. Tel Joan Smith 01736 793631

Hayle Old Cornwall Society. First Friday of each month. Oct. to May. Passmore Edwards Institute,7.30pm. . Maria Prosser, 01736-755072

Hayle Pilot Gig Rowing Club. Rowing out of Hayle Harbour most Tuesdays and Thursday evenings Tel. 01736 754254 www.haylegigclub.com

Praze Hayle Choir. Every Tues.7.30pm. Methodist Hall Don Metcalf 01736 757720

Hayle Model Railway Club & Duchy Railroaders Club Rooms Unit 5, Praze Business Park, Praze-an-Beeble. Mon. & Thurs. 7pm – 9.30pm. Bob Mims 757910 bobmims@live.co.uk

Hayle Rotary Club. Monday 7 pm except Bank Holidays White Hart Hotel, David Raymer 01736 755029 or Trevor Osborne 01736 793596

The Rotary Club of St Ives Bay New Rotary Club for men & women meeting on Tuesdays at the Carbis Bay Hotel 6.30 for 6.45pm. Contact the secretary@stivesbayrotary.co.uk

Hayle Samba Community Band. Every Tues. 7:30 to 9:30pm Meeting Room at rear of The Royal Standard, Hayle. Tel: Frank or Joy 01736-754976

Save our Sand. 2nd Tuesday of each month, 7.30pm at the Passmore Edwards

Institute. Hayle

Heyl St Piran Singers. Every Thursday at Hayle Methodist Church Hall at 7.30 to 9.30pm.

Ann Birch 01736 752335

St Erth Friendship Club for the over 60s. Tuesdays 2pm – 4pm St Erth School Hall £1.50 per session. 01736 850758

Table Tennis for Fun, every Friday at 2pm at Hayle Methodist Church Hall, Chapel Hill, Hayle. Only £2 per session. Bats, balls and squash provided. John Nunn 01736 759686

Heyl Town Band. Rehearsals Tuesdays & Thursdays 7:30pm – 9:30pm, Junior band rehearsals Thursdays 6:pm – 7:00pm

Hayle Twinning Association. 2nd Mon. of each month at Hayle Community Centre. 7.15pm in Room 7. Mike Stuckey 01736 753755, mikestuckey@tiscali.co.uk

Hayle Penwith U3A Hayle Day Care Centre Social meetings 2nd & 3rd Thurs. 2pm. Art, History, Writing, Play reading, Current Affairs, Luncheon Club. Chairman Mel George 756484 Secretary Tess Hulland 759658

W.I. Hayle 1st Tues.of the month, 7.30pm, Hayle Daycare Centre Tel. 01736 753503.

To appear on this page free of charge drop in details to Store 28, 28 Penpol Terrace, Hayle TR27 4BQ.



Anthony Solomon/ Painter & Decorator

All aspects of decoration Free Quotes!!
undertaken!! Tiling!! No job too small!!

[Tel:01736798585/07890988236](tel:01736798585/07890988236)

anthonysoolly@hotmail.co.uk



Country Skittles

FUN FOR ALL!

- Skittles Lanes
- Great Food
- Shooting
- Games
- Bar

Opening Times
SCHOOL & BANK HOLIDAYS:
Mon to Sat:
Noon to 11pm
Sunday:
Noon to 10:30pm
ALL OTHER TIMES:
Mon to Fri: 6pm to 11pm
Sat: Noon to 11pm
Sun: Noon to 10:30pm

www.countryskittles.com

Townshend • Hayle • TR27 6ER
01736 850209



ADVERTISERS INDEX

- 33 Alistair Kinsey Hearing
- 12 Angove Sports
- 42 Anthony Solomon Decorator
- 10 Barton Print
- 21 Biz & Bytes
- 23 Blewetts Toy Shop
- 30 Calvin Goodwin Decorator
- 3 Café Riviere
- 11 Cleaner Carpets
- 19 Cliffords Plumbing
- 18 Copperhouse Clinic
- 14 Cornwall Chiropractic
- 42 Country Skittles
- 7 C Spray Bath Renovations
- 28 David N'jie Decorator
- 4 Des Button Electrician
- 9 **Farm Shop The**
- 44 **Flowertime**
- 10 Gallery Coffee Bar & Gifts
- 32 Graham Smith Music Tutor
- 32 Guitar Lessons
- 39 Gwyns Yoga
- 32 Harvey Rail Holidays
- 8 Hayle Cycles
- 43 Hayle Day Care
- 20 HHC Painters
- 9 Homeopathy
- 15 John Andrews Joinery
- 38 J.C. Electricals
- 5 **Keast Opticians**
- 33 Kinsey
- 15 Kleeneze
- 30 Lavenders Nursery
- 16 Lessons in Piano
- 35 Lindsay's Dog Grooming
- 17 Local Vocalz
- 36 Marine Electronics
- 31 Meritorius
- 21 Mobile Foot Clinic
- 17 Neil Shepherd Music Teacher
- 20 Nick Farrar Windows
- 25 Paradise Park
- 35 Paul Sherris Funeral Service
- 13 P.D.H. Builders & Roofing
- 33 P G Franklin
- 27 Philps Pasties
- 26 Plantech
- 26 Rick Harvey Handyman
- 16 Sarah Lane English Lessons
- 4 Simply Unwind
- 7 Sleepy Hollow
- 34 St. Erth & Hayle Cars
- 29 Sylvia' Exercise Classes
- 13 Tee Cee Tech Computers
- 22 Threads
- 31 TJ's Carpets
- 39 Webb & Philp Electrical
- 6 Willoughby Construction
- 24 W J Winn Funeral Director

Pick up your FREE copy of the Hayle Pump at advertisers listed above in bold. You can also get a copy from Hayle Library, Hayle Community Centre, Bodriggy Health Centre, Wyevale Garden Centre and the following Post Offices – Copperhouse, Martins Connor Downs. You can also view current and past copies online at our website.

www.haylepump.org.uk



HAYLE DAY CARE CENTRE **Commercial Road, Hayle**

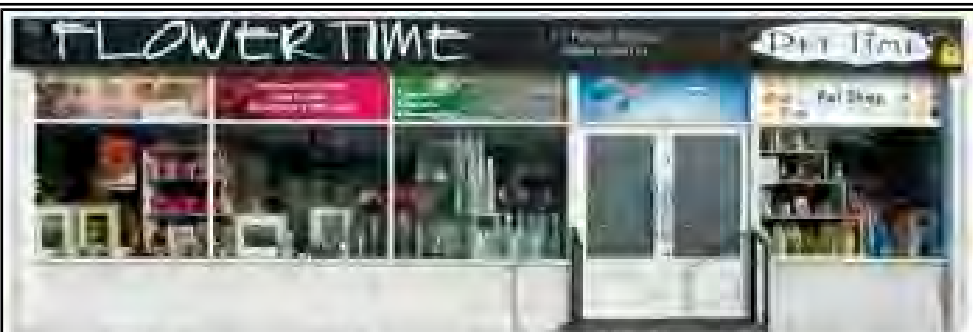
An affordable day care facility for the elderly of Hayle, St Ives and district

Transport • Freshly cooked meals

Also includes bathing and hairdressing
Therapy and lively social interaction

Always a friendly welcome

Call 01736 755000



Flowertime & Pet Time Penpol Terrace

Loyalty Card Holders specials @ Flowertime

Extra 100 points when you buy any bag by Eleanor's Attic.

Triple points when you buy 4 or more greeting cards.

Extra 50 points when you spend over £15 on jewellery.

Extra 150 points when you have a bouquet delivered in the local area*

Pop in and see our great range of greeting cards and gift ideas.

Loyalty Card Holders specials @ Pet Time

Extra 150 points on any 15kg bag of James Wellbeloved food.

Double points on any 2kg or 7.5kg bag of Burns food.

We can order from over 30000 different pet products, give us a call.

Now in stock Compost, plant foods, slug pellets.

Not got a loyalty card no problem pop in,
and we will sort you out with one.

(1point = 1p, points to be used in store **)

01736 757006 or 0800 056 0711

www.wesendflowers.co.uk

*local area Hayle, St.Ives, Camborne, Penzance.

** points can be redeemed in store when you are over 100 points.