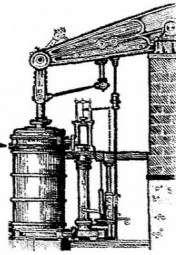


Feb 2014
to
March 2014



HAYLE PUMP NEWSLETTER

The Heart of Hayle

A collage of various local business advertisements including:

- HANCYMAN EXPANDED & IMPROVED** - Hair and skin care services.
- CLEANER CARPETS Cornwall** - Carpet cleaning services.
- Country** - Real estate services.
- PILATES** - Fitness classes.
- ANGOVE SPORTS** - Sports equipment.
- JC ELECTRICAL** - Electrical services.
- GUITAR LESSONS** - Music lessons.
- THE FARM SHOP** - Farm produce.
- CCP** - Various services.
- Mathew Blackmore** - Plumbing and heating services.
- David N'jie** - Painter services.
- St Erth & Hayle Cars** - Car sales and repairs.
- Webb & Phipps** - Various services.
- St Erth & Hayle Cars** - Car sales and repairs.
- Webb & Phipps** - Various services.

Issue
113

FREE COPY- please take one.
Made possible thanks to our advertisers
Circulation: 2500

Hayle Pump Newsletter

Passmore Edwards Institute
13-15 Hayle Terrace, Hayle, TR27 4BU
www.haylepump.org.uk

Editor

Rich Morgan
editor@haylepump.org.uk

Desk Top Publishing

Jeff Turk
ntp@haylepump.org.uk

Treasurer

John Jansen
treasurer@haylepump.org.uk

Advertising

ads@haylepump.org.uk

Web Site

John Bennett
webmaster@haylepump.org.uk

Team Members

Sarah Turk, Jeff Turk, Paul Scott
jeffandsarah@theturks.fsnet.co.uk

Subscriptions & Web

The Hayle Pump can be viewed and downloaded online at: www.haylepump.org.uk

For 6 issues by mail, please send a cheque or postal order for £3.50 made payable to **Hayle Pump Newsletter** to:

HAYLE PUMP SUBSCRIPTIONS
35 Penpol Terrace, Hayle TR27 4BQ.

Please state delivery name & address

The Hayle Pump would like to remind readers that all material accepted as points of view are not necessarily the opinion of the Editorial Team.

Adverts must be sent to ads@haylepump or dropped off as below

News, letters, notices etc. must be emailed to editor@haylepump.org.uk or dropped off at:

Home Trading 28 Penpol Terrace, the **Passmore Edwards Institute or Flowertime.**

The decision of the Editorial Team is final

Next deadline is 13th March



Display Sizes and Advertising Rates

Page	Size (mm)	Price
Full	190 x 130	£90.00
1/2	130 x 95	£30.00
1/4	63 x 95	£15.00
1/8	63 x 42	£10.00

Advertising Deadline
13th of prior month

Please visit our website for more information, guidelines for artwork submission of adverts and important notes to advertisers.

www.haylepump.org.uk

EDITORIAL.

A Happy New Year to all the readers, contributors, and advertisers of the Hayle Pump. As the new Editor I will be attempting to carry on Graham Coad's good work and hopefully keep The Pump full of local information, interesting articles and a few laughs along the way. My wife and I live in Hayle with our daughter Lily, we're very proud of the town. Like any Morgan, I am convinced that I am a distant relative of Sir Henry Morgan, the famous pirate. In reality my grandfather was a Welsh coal miner and bare knuckle boxer, my father a 'fire and brimstone' evangelical preacher. By contrast I became a punk rock musician who 'grew up' to run a music business. Using this logic, I have high hopes for my daughter!

In 2014 The Pump will again be promoting our brilliant local businesses who really are '**The Heart Of Hayle.**' With the recession still biting and a new supermarket on the horizon, our High Street will need supporting more than ever.

Adverts cost as little as £10 and whether you are a start up or a long running business, there is a place for you in The Pump.

We will also continue to

highlight the work of our local charities and organisations in being there for those who need a helping hand.

Most importantly, this is a newsletter for Hayle put together by Hayle volunteers so **you** can also get involved: you may have a photo, story, poem or piece of vital local information. Send it in and space willing, we'll print it.

Keep pumping.

Rich Morgan

editor@haylepump.org.uk

Café Riviere

Across Hayle's Jubilee Bridge

**Serving a variety of hot
food, late breakfasts,
drinks, ice-cream, cream
teas and snacks.**

- *Indoor and outdoor seating.*
- *Take-away is available.*
- *Open all year.*
- *Next to the public open-air swim pool, sub-tropical gardens, promenade and nature reserve.*

**Winter Hours:
WED to FRI 12-4pm
SAT/SUN 11-4pm**

THE FARM SHOP

31 Penpol Terrace, Hayle
TR27 4BQ

**Open - 6 days a week
8am- 5pm**

FOR ALL YOUR LOCAL PRODUCE

Fruit, vegetables, plants, flowers,
free range eggs and
Cornish potatoes.

NOW IN

Primroses , local daffodils
and Valentine Flowers.



Hayle & District Lions Club

would like to thank everyone who kindly donated to their Christmas Collections, which raised the magnificent sum of £2300. Santa was very busy with his sleigh at the Carnival, local supermarkets and around the streets and also in his Grotto at Makers Boutique. We have already donated a substantial amount to the Hayle Food Bank and will be supporting many other local and International charities in 2014. We would like to thank the Friends of Lions, the Army Cadets and the Wallace Family for their untiring help and

WONDERFUL WILDLIFE AND INDOOR PLAY AT PARADISE PARK!

Cornwall's award-winning wildlife sanctuary with penguins, otters & farmyard friends, plus fantastic JungleBarn indoor play.

Open
every day
at 10am

- Home Cooked Roast Lunches
Tuesdays, Thursdays and Sundays
with loyalty card and 'Seniors Special'
rate on Tuesdays
- Themed birthday party rooms
- Park & Gift Shop open
10am - 3pm
- JungleBarn open
10am - 6pm
- Return Tickets £3.50

JOIN US ON FACEBOOK
'ParadiseParkCornwall'



Paradise Park, Trelissick Road, Hayle
Open every day at 10am Infoline: 01736 751020 www.paradisepark.org.uk

support over the Christmas period and the Co-op, Lidl, Makers Boutique Hayle and Tesco St Ives for allowing us to collect on their premises.

Looking forward, Hayle Lions are proud to present a Valentines fun Dog Show on Sunday 16th February at St Pirans Hall, Goldsithney, Penzance starting at 12.30pm. There will be 21 Classes, followed by Best in Show and Reserve Best in Show and rosettes will be presented for 1st to 4th place in each class. Refreshments and a raffle will be available. We look forward to seeing you and your dogs there.

We will be holding a Fun Quiz night at the Quay House on Tuesday 25th February starting at 7.30pm. The cost will be £5 for a team of four people. It should be a great evening so do come along and support your local Lions Club.

*Betty Rawlings. Secretary
Hayle & District Lions Club*

Hayle CYCLES

MOUNTAIN - ROAD - BMX SPECIALIST

Bicycle Sales and Repairs

Tel: 01736 753825

36 Penpol Terrace, Hayle TR27 4BQ
www.haylecycles.com

Country Skittles



2 MEALS

FOR £10

or **MEAL &**

DRINK for

£8.95!

(offers on Mons-Weds
from 6-7.30pm.

See our web-site
or Facebook page
for details.)



**Opening
Times**

SCHOOL &

BANK HOLIDAYS:

Mon to Sat: Noon-11pm

Sunday: Noon-10:30pm

ALL OTHER TIMES:

Mon to Fri: 6-11pm

Sat: Noon-11pm

Sun: Noon-10:30pm

Townshend • Hayle • TR27 6ER

01736 850209

www.countryskittles.com

The Sleepy Hollow

Your Alternative Gothic Gift Shop

Family-run Gothic Gift Shop

Selling a wide range of Gothic gifts,
candles, incense, clothes and more

Incorporating:

Sleepy Hollow Herbs,
Medicinal & magical herbs,

Tissaries, and

Hand-blended incense and oils.

Visit our shop at Unit 3 - Pratts Market,
Chapel Terrace, Hayle TR27 4AB

07747 078274

www.thesleepyhollow.vpweb.co.uk

Des Button

SPRINGFIELD

33 Clifton Terrace
Hayle TR27 4BP

ELECTRICAL SERVICES & SUPPLIES

01736 753211



**PART P
REGISTERED**



Millpond Update

'The Curse of the Jet Stream'

West Penwith, by some minor miracle, managed to avoid the October 'Hooligan' St Jude, but since then we have been suffering with the West Coast, being battered and drenched every other day by the storms carried across the Atlantic by the Jet Stream.

It may seem strange but as far as the Millponds are concerned even grey clouds have a silver lining. Water levels are well up on both ponds and the water is almost silt-free. The river is flowing fast and we would ask visitors to the ponds to take great care near the water, especially in the case of young children. The rise in the levels has re-activated the siphons on the Swan Pool for the first time in about five years.

Our two reprobates arrived home in mid-December. Freya and Odin have been on their holidays, but they usually make it home for Christmas. We miss them while they are away so it is always a relief when they land on the ponds again.

The ducks seem very settled in spite of the bad weather and the egrets are coming in for shelter

from the rough conditions around the harbour.



The Water Rails are around but you may hear them more often than you see them.

These attractive little waders are quite shy, hunting around the reed beds for insects and small fish. The Kingfishers are still visiting the Inner Pond and provide a flash of colour along the woodland bank of the lake.

After another day of heavy rain there was a lot of water lying along the curbside of Millpond Avenue and a channel has been cut through the bank into the Swan Pool to help it drain away. The fence alongside Tremeadow Terrace has been removed. It was damaged in a previous storm and was becoming unsafe so it was wise to take it away altogether. It may be replaced with small bushes later.

Finally, our thanks to the Hayle Decorative Lights Committee for the display around the walls which was much appreciated by visitors and residents alike.

Looking forward to Spring.

Georgina Schofield

Volunteer Wildlife Warden

Cspray

Baths and Kitchens

Bath Resurfacing and Repairs

Pressure washing Domestic and Commercial

Patios ● Driveways ● Paving
● Decking ● Walls

- no area too small -

Contact for details:
01736 756077

PASSMORE EDWARDS
INSTITUTE



MEETING ROOMS FOR HIRE

Hayle's Village Hall
has rooms for 2 to 60+
NEW:
**Children's Parties
and Catering**

For more information visit:
WWW.HAYLE-PEI.ORG.UK
Or call: **07784-377576**

13-15 Hayle Terrace, Hayle, TR27 4BU
Charity Number 268429

Melrose

Bags & Accessories

Now open at

*19, Foundry Shopping Village
(Pratts Market)*

*The little shop with a large
selection of :*

*handbags-scarves-purses-
wallets-satchels-backpacks-
umbrellas & gloves.*

Quality & Value

Tel 0757 8673116

A Veritable Tardis.



Melrose Bags and Accessories is run by Redruth man John Melrose, who first came up with the idea of a "pop-up shop" in St Ives and did so well, he set up outside Pratts Market in Hayle. He has received a warm welcome and an excellent response selling bags, purses, scarves, umbrellas and satchels. The owl pattern bags are proving to be very popular and reflect the shop's credo of top quality at good value.

For a small shop Melrose Bags has a large selection and we wish him well on his new venture in Hayle.

Support
Our Local
Traders

ALL AERIALS

TV Aerial & Satellite TV Specialists.

digital

Registered Digital
Installer

25 Years Experience



For all aspects of Tv Aerials,
Satellite Systems Fixed &
Motorised, Installations &
Repairs

Free Friendly Expert Advice By
Local Engineer.

Tel : 01736 759225

Mobile : 07979503907

Email. jonathan@allaerials.co.uk

Win a bouquet for your Mum at Flowertime !

Flowertime is running a painting/drawing competition open to children 6 years and under and 7 to 12 year olds.

Draw or paint your Mum with a bouquet of flowers.

All you have to do is bring your artwork (name, age and contact details on the back) into **FLOWERTIME** by March 18 to be in with a chance of winning a bouquet for your Mum. Your artwork will be displayed in the shop. (Sorry no artwork can be returned).



Rotary Club of Hayle

The club members enjoyed a

Christmas evening in early December and said farewell to Walter Bibby who was a founder member of the club which began in October 1973. Walter is going to live with his son in Scotland and we wish him well as he approaches his 92nd birthday! One of his last appearances in the town was at the Remembrance Day service adorned with a chest full of



The Gallery Coffee Bar

Warm & welcoming with comfy indoor & courtyard seating

Pop in and see us for :

- * Hot Chocolate
- * Great Coffee
- * Tea Pig — Herbal Infusions
- * Delicious Home Made Cakes
- * All Day Breakfasts
- * Warm Bacon Rolls served all day
- * Soups, Jacket Potatoes, and Paninis
- * Cream Teas

Now selling a range of affordable gifts
Open from 9am — 4 sh

1 Chapel Terrace, Hayle
(by viaduct) 01736 756829
Dogs are Welcome



Kernow Auto Gleam

Car Valeting Services

For Prices on Services please contact
07788 459884 or
harry@kernowautogleam.co.uk

Services include
Basic Hand Wash
Wash and Vacuum
Budget Vacuum
Full Valet
Interior Valet
Exterior Valet



medals. He also helped to collect several hundreds of pounds for the Poppy Appeal.

President David Jones and Norman Emberson visited the youth section of Hayle Runners and presented prizes to two deserving young athletes. The club was pleased to contribute to the Hayle Foodbank at a special time of the year and supported a young lady who has gone out to Ghana to help install sanitation into a local school and provide some hygiene awareness. Rotary Youth competitions get going over the next few months and we held a competition for primary children at the Day Care centre on January 24th. There are also Young Chef and Young Musician events being organised. On February 14th at the Day Care centre we shall be having a Beetle Drive beginning at 6pm to raise funds for Aquaboxes (water purification) which will be sent to the Philippines.

In March we shall be organising a Charity meal to raise funds for projects including providing a community defibrillator to Hayle School.

If you are interested in helping or joining Rotary, please contact David Raymer on 755029.



www.berwicks.co

Thinking of selling?

For a free no obligation market appraisal please call us on:

01736 759696.

A well established business with fantastic advertising coverage.

20 Foundry Square Hayle TR27 4HH

BARTON
print

Tel: 07799 411525
Fax: 01736 757022

Quick Reliable General Printing Service

JUST A SMALL SELECTION OF THE SERVICES WE OFFER!

- BUSINESS CARDS
- COMPLIMENT SLIPS
- NCR PADS / SETS
- LEAFLETS
- MENUS
- NEWSLETTERS
- ENVELOPES
- LARGE FORMAT PRINTS
- LETTERHEADS
- OVERPRINTING
- RAFFLE TICKETS
- B/ W COLOUR COPYING

COMPETITIVELY PRICED

1 Turnpike Road, Connor Downs

Telephone 07799 411525 01736 754220

Hayle Film Club programme voted on by audience

You asked for it, you got it. Five of the six films in Hayle Film Club's winter-spring season were selected via a mailing list survey. And what a programme it is:

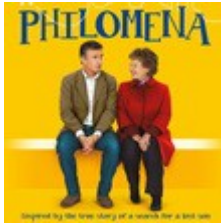
The award-winning **LE WEEK-END**, starring Jim Broadbent and Lindsay Duncan as a late-middle-



aged couple who try to revitalise their marriage in Paris, will be screened on Saturday, 8 February, at 7.30pm.

On Saturday, 8 March, also at 7.30pm, Judi Dench in

PHILOMENA, the true story of an elderly Irish woman who, with the help of



a BBC journalist (played by Steve Coogan), seeks the grown son she gave up for adoption while in a convent for wayward girls.

The one wild card of the season is a special screening on Sunday, 9 March, at 6.30pm, of **THE BIG CITY** (Mahanagar), the rich and absorbing 1963 classic of family and city life in

ANGOVE SPORTS

**COPPERHOUSE,
HAYLE**

TEL.: (01736) 752238

For all Sports Equipment,
Clothing, Footwear and
Fishing Tackle

Rackets Repaired and
Restrung

CLEANER CARPETS Cornwall



- ✓ free quotes
- ✓ no hidden charges
- ✓ non toxic

- Covering Lands End to Truro
- Over 10 years experience
- Fast friendly service

For further details please contact
Pete Williams on 07901 803493
or email
pwpetewilliams@googlemail.com

mid-1950s Calcutta, directed by the master of Bengali cinema, Satyajit Ray. The Big City was digitally re-mastered and rereleased by the BFI last year to mark the film's 50th anniversary. Rated PG, in Bengali and English with English subtitles.

Finally, in April are two more winners, a matinee screening of the acclaimed Arabic-language drama **WADJDA**, about a Saudi girl who dreams of a green bicycle, and **SAVING MR BANKS**, starring Tom Hanks as Walt Disney and Emma Thompson as Mary Poppins author P L Travers. More on these two films in the next issue. Screenings take place upstairs at the Passmore Edwards Institute. Tickets are £5 per person (no concessions), or £4 for members, available from the Bean Belt (Penpol Terrace), or by calling Sarah Turk on 01736 752319, or online at www.haylefilmclub.org.uk.

Tickets on the door are subject to availability. Evening screenings are followed by free homemade refreshments. Hayle Film Club's sponsors include Hayle Town Council, the Co-op Membership Community Fund, and the Cornwall Council Community Chest.

Donna Anton, 01736 753184

The Ladies Room
at
TJ's Barber Shop.
Ladies' cuts from
£10

Just walk in,
appointments not always
necessary. All aspects of
ladies' hairdressing
available.

Tel 01736 757000
2 Market Square
Copperhouse Hayle



**Classes at the
Passmore Edwards Institute**

Suitable for all ages and abilities

Classes run throughout the year

Mondays 7.00-8.30 pm
Tuesdays & Fridays 9.30-11.00 am

Please phone Gwyn for details on

01736 791784

or

07815945695

Towans Ranger Project

Hayle is rightly famed for its '3 miles of golden sands'. Perhaps less famous is the large and wildlife-rich sand dune system behind the beach, that reaches from Hayle all the way to Gwithian/Godrevy. The Towans Partnership, an umbrella organisation concerned with safeguarding the dunes and raising awareness of their value, is embarking on a one year project to seek sustainable funds to establish some form of 'ranger' presence in the area. This is expected to be a hands-on role, non-bureaucratic, dynamic and able to liaise and

engage with all sectors of the community including schools, walkers, landowners, businesses etc. A local environmental consultant, Martin Rule, has been appointed to take this forward. An evidence base needs to be established to identify the demand for the role, what tasks are needed and then to seek funding. The initial response from businesses, site users etc. who have been 'interviewed' so far is very positive. It certainly appears there is a consensus that having such a presence here to co-ordinate and develop projects and perhaps help with enforcement and/or the

Computer / Laptop Problems?

I can restore your computer or laptop to full working order
for a fantastic price

NO CALL OUT CHARGE

Professional repairs and maintenance of
full systems and networks

Call today for a FREE no obligation quotation

**PC REPAIRS • PC NEW BUILDS • PC REBUILDS •
PC UPGRADES • PC TRAINING • DATA RECOVERY •
NETWORK INSTALLATION & MAINTENANCE**

For a prompt and reliable service
call Tim Cogher at TeeCee Tech today



07730 283433



01736 850798

www.kleeneze-hayle.co.uk

All your favourite hard to find
Homecare Health products and
quirky gadgets.

NOW ONLINE

This 88year old British catalogue
company has joined the Web!
Order online but still receive the
friendly free delivery and pay on
arrival, service from your local
distributors.

*All online orders will receive a FREE
mystery product sample!*

PH 01736 850840 07957897270

See you soon,
Nick & Jan Pincott

encouragement of good
environmental practice would be
a good thing. The need for this
will surely only increase as
additional development takes
place in and around Hayle and
more people seek some peace
and quiet in the dunes. Martin
would welcome anybody getting
in touch to provide comments
and ideas. He is also planning a
few guided walks this spring to
observe wildlife and discuss the
project on-site, out in the fresh
air. Walk details will be posted
on the new website
towanspartnership.org.uk

Contact Martin via:
martinrule@talktalk.net

01326 573 017 or 07854 123 877



NORTH WARD

John Pollard
www.djpollard.co.uk

07967 272808

CORNWALL COUNCILLORS FOR HAYLE

Contact us directly or through the
Hayle One Stop Shop where we hold
surgeries on the first Saturday
of each month

0300 1234 100

SOUTH WARD

John Coombe

01736 752831



Hayle Local Vocalz Choir

Local Vocalz is a lively 65 strong
mixed voice choir based in
Hayle. The choir has enjoyed a
busy few months singing on St
Michael's Mount, fund raising
performances for Cornwall
Hospice Care in Falmouth and
Penzance, participation in the
Mayor's Civic Service in St
Elwyn's Church, and two
concerts to raise funds for St
Elwyn's,. The choir rehearses
on Mondays at 8pm during term
time in St. Elwyn's Church,
Hayle. The choir is currently

rehearsing music from the musicals "Les Miserables" and "Phantom of the Opera", Eric Whitacre's "Seal Lullaby", "Bohemian Rhapsody" and other new pieces of music to add to its repertoire. The first concert of the new term is in February with the well known Holman Climax Male Voice Choir. The choir's first CD "We Will Sing" is released in February and a 3rd French concert tour is taking place in May. New members are welcome. To find out more, call Neil Shepherd on 07950 58578, e-mail neilshepherd@yahoo.co.uk, www.localvocalz.co.uk .

Hayle Harbour Trust Update

Just before Christmas, the Trust received a letter from Peter Marsh, Cornwall Council's Corporate Director of Environment. We had asked the council to clarify whether it was considering adopting Hayle Harbour as a Municipal Port and the response was: "Given the current economic climate and uncertainty around local government finances it would not be prudent for the Council to take on the management of the Harbour." He went on to say: "I am therefore writing to

Cabinetmakers & Joiners.
JOHN ANDREWS
Traditional Bespoke Woodwork

**Windows, Doors and Staircases
Boxframe Window Repairs
New Sash Cords and Axle Pulleys**

**Entrance Gates and Gate Posts
Furniture Repairs**

**www.johnandrewsjoinery.co.uk
Mob: 0776 534 1616
Tel: 01736 741 064**



Computer Coach

**One to one support
with using and
maintaining your
computer system**

**Comptia A+ Trained
and CRB Certificate**

Phone: 07929869545

P.jacobs@talktalk.net

offer the support of Cornwall Council to the Hayle Harbour Trust's Community Interest Company approach."

Currently, the Harbour is managed by the Hayle Harbour Authority Ltd, a limited liability company owned entirely by ING. The land is owned by ING Real Estate (UK) Ltd. In order to minimise costs, and to avoid the need for a Harbour Revision order or other complexities, we propose a combination of **charity** and **Community Interest Company (CIC)** as shown in the diagram. (pg 17) Since there is no mechanism for converting a limited liability company into a charity, Hayle Harbour Authority Ltd would

become a CIC. The Hayle Harbour Trust, as a registered charity, would be nominated as the specified asset-locked beneficiary of the CIC. In addition, the land held by ING Real Estate (UK) Ltd would be transferred directly to the Hayle Harbour Trust. There are many benefits to the Harbour being owned by a charity, including reductions in council tax and easier access to grant funding. For more details on how all this works, please see our web or our Facebook page. As we move towards community ownership of the harbour, we will need to strengthen our board of trustees and our team. If you have the time and skills to help, please



CORNWALL CHIROPRACTIC CLINIC

— maintaining your lifestyle —

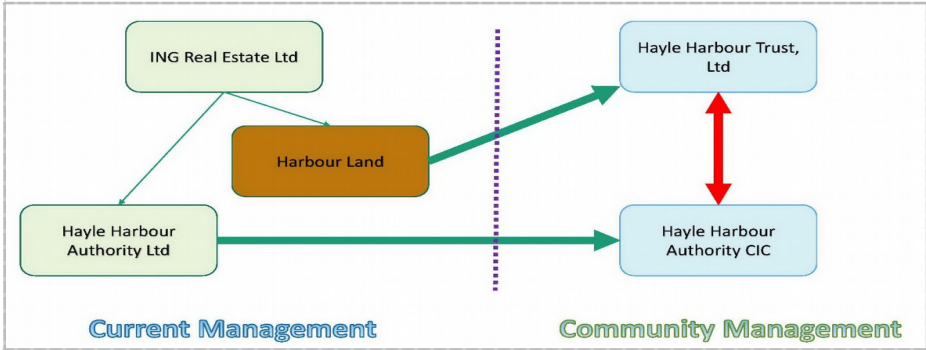
Sports Massage | Reflexology | Chiropody / Podiatry | Hypnotherapy | Nutrition
Acupuncture | Yoga & Pilates | Chiropractic Care

21 Foundry Square, Hayle, Cornwall, TR27 4HH

01736 759 088

www.cornwallclinic.co.uk

For patients who are unsure which treatment is appropriate we can offer a
FREE 15 minute consultation on request.



contact us. What are we looking for? Almost everything: maritime, construction, engineering, finance, accounting, marketing, computer, architectural, environmental, scientific, archaeological, publicity, design and management skills are all needed. Contact us, whatever

your talents, I am sure we can find a place for them. But remember, this is for the community - charity trustees do not receive any payment. For the latest information, search for Hayle Harbour on Facebook.

John Bennett, Chairman,

www.hayleharbourtrust.org.uk

Pasties by Post

'Pasties by post' is now available at Philp's Bakery. Use our courier service to have our Genuine Cornish Pasties delivered to your door.

Alternatively, you can send our pasties to relatives out of the county or to a member of the family at university.



Contact us by:

Phone:

01736 753343

or

01736 755661

Website:

phipsbakery.co.uk



P.D.H Builders & Roofing

High Quality Guaranteed Work

Contact: Paul Moyle

07989 075517 01736 719469

5a Bodriggy Street, Hayle TR27 4NB
pdhbuilders1@hotmail.co.uk

FOR ALL OF YOUR BUILDING REQUIREMENTS

The Hayle U3A Writing Group meets every second

Thursday, in the Library, at 10 am.

starting this term on the 16th

January. There are over twenty members and usually between 12 and 18 attend. Chris Berry, the leader, sets a topic each session as "homework", which we read at the next session. E.G. ***Write a piece in the first person in which the style and content is constrained by the character and experiences of the narrator:***

Hard Times

'We have been together forever. Or so it seems. Starting out with nothing, the daily round of feeding us and maintaining a home seemed to fill my days. Sometimes we had a very meagre diet but we both loved the estuary and its simple pleasures, spending our time on it or beside it. The winters back then seemed harder than now. Freeze up or flood, or one followed by the other. One year there was a great flood, we lost everything; it was all just swept away. Afterwards there was fierce

competition for building materials. Some neighbours were hostile and selfish. But I stood my ground and managed to source all I needed. Days turned into weeks, weeks into months, months into years. Not all of our youngsters survived. Some were born weak and just faded away. One set out into the wide world when our backs were turned, too young and inexperienced, never to be seen again. I think he was drawn to the sea. When one survived and began to grow strong, we were filled with joy. We nurtured her, the way you do, fed her and groomed her, looked out for her, taught her all we knew and hoped she'd turn out just like us. I had my share of problems though, when she was growing up. She didn't like being plump and frumpy. Generally

PLANTECH

THE FRIENDLY RELIABLE SERVICE

- Lawns cut and borders weeded
- Hedges trimmed
- House, garden & building waste taken
- Garden clearance work
- Gravel, sand, topsoil delivered & laid
- Garage and loft clearances
- Free no obligation quotes

(Tel) 01736 754401 / 07979546434



very calm, I never-the-less had a nasty temper when provoked and was, with hindsight, fiercely over protective. Miraculously, as she reached adulthood, she became a great beauty and soon found a partner of her own. But we are very lucky as they have stayed close by and we see them nearly every day. She is my pride and joy and I take pleasure just from watching her. Old as I am, I felt a song come in to my heart. I find it difficult to reconcile the sadness I feel, knowing that I won't be around much longer to enjoy her company, with the great joy that her existence has brought to mine. She is, in my opinion, the most beautiful swan on the river.

John Jansen, member,

Hayle U3A Writing Group.

St Ives And Hayle Community Choir

Formed in 2009, Cornwall Community Choir comprises of a number of smaller choirs in Truro, Falmouth, Helston, St Ives, Hayle and Penzance which rehearse the same music and come together three or four time each year for large scale performances. The St Ives and Hayle Choir rehearses on Tuesday afternoons at St Anta's Church Hall, Carbis Bay starting at 1.30pm. New members are welcome. To find out more, come along to a rehearsal or visit the website

www.cornwallcommunitychoir.co.uk

CLIFFORDS

Plumbing & Heating

Boiler Changes - Full central heating - Servicing - Landlord Certificates

Dripping taps to complete bathrooms - All plumbing work undertaken

Free quotations

Local, Reliable, Clean and friendly service

01736 755170

07761 938183



Fully Qualified, Gas safe Registered and Water Industry Approved

www.waterworkscornwall.co.uk

Bodriggy Surgery

60 Queensway, Hayle TR27 4BP

Tel: 01736 753136

Email: bodriggy@cornwall.nhs.uk

We run many clinics for the management of chronic diseases and offer a wide variety of other services including minor surgery, travel vaccinations, sexual health advice and contraception, and NHS health checks.

Opening times. Monday to Friday
08.00 – 18.00 hours.

Telephone lines open 08.30 – 18.00

* We have pre-bookable appointments, including ones before 8am and after 6.30pm.

For same day appointments, contact the surgery on the morning of the day you wish to be seen, by telephone, on-line or in person.

* Home visits are only available for persons who are housebound. Please contact us before 10.30am to request a visit.

* You can request a repeat prescription on-line through our website, by letter or in person. We regret we are unable to accept requests over the telephone.

* If you feel your problem or issue

could be dealt with by telephone, please ask for a doctor or nurse to call you back.

* Please call from 12 noon any weekday for test results.

* We offer a minor injuries service, dealing with cuts, lacerations, burns, bites, removal of foreign bodies, nose bleeds etc.

* When we are closed call the surgery on 01736 753136 and your call will be transferred to the GP out of hours service.

* Minor injuries outside of surgery hours:-

West Cornwall Hospital open 24 hrs

Camborne Redruth Community

Hospital open 8am-10pm

Nearest A & E Emergency dept is

Treliske Hospital in Truro.

Want to be a member of our Patient Participation Group?

See our website for details

or telephone the surgery and speak to the Practice Manager.

www.bodriggysurgery.co.uk

Lavenders Blue

Garden Nursery has proved so popular since it opened just four years ago, that it is expanding. It is celebrating the start of the

Tel: 01736 - 757818

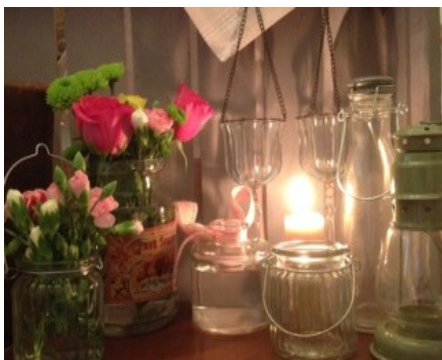
Mob: 0779 263 2635

Nick Farrar

Property Maintenance

Windows-conservatories - Kitchens - Carpentry - Fibre Glass Flat Roofs

new growing season in February by opening a shop selling an exciting range of plant and



garden related items and gifts. Lavenders Blue Garden Nursery in Penpol Avenue (close to Penpol Primary School) is where its green-fingered owner, Alex Knight-Smithram, started selling her locally grown plants and shrubs. With a growing reputation for producing good quality plants in peat free compost at very competitive prices, along with her expert knowledge of where and how to grow them, Lavenders Blue Garden Nursery has proved a magnet for plant and garden lovers. It has also attracted a

BIZ AND BYTES

07974 647524 01736 755971

If you require computer assistance, either training or to resolve a problem then give us a call. Visits arranged to suit you.

Looking after the home user and small business.

**WEBSITES • BROADBAND • TRAINING •
COMPUTER SUPPLY • TYPING**



www.bizandbytes.co.uk
enquiries@bizandbytes.co.uk



WEST CORNWALL MOBILE FOOT CLINIC

For the professional
treatment of:

Corns & Callus

Diabetics

Verrucas

Athletes Foot

Thickened Nails

Fungal Infections

Ingrowing Toe nails

Can't cut your own nails

**All in the comfort in
Your own home**



Peter Williams

S.A.C.Dip FHPT/FHPP

Tel: 01736 751752

Mob: 07901 803493

Evening and weekend calls available
pwpetewilliams@googlemail.com

number of landscape gardeners who are keen to use local plants in their clients' gardens. Alex supplies hanging baskets and custom orders to nearby holiday parks, hotels and pubs and is very proud that her plants are sold in National Trust properties in west Cornwall.

The new 'gardenalia' range will include vases, planters, gift bags, bunting, garden tea light holders, bird feeders, local crafts and a range of skin care products - all aimed at garden lovers". In order to display all these beautiful items, Alex has converted what was her 'shedquarters' (her office!) into a cosy and very attractive shop, ready for the grand opening on February 14th. Open every day except Mondays until October, expect a warm, friendly welcome and a wide range of herbs, alpines, perennials, lavenders, bedding plants and much more.

www.lavendersbluenursery.co.uk

Facebook : [Lavender's blue](#)

Telephone on 01736 754844.

P G FRANKLIN

Chapel Hill, St Erth

Carpenter & General House Repairs

Garden Landscaping

NO JOB TOO SMALL

Telephone: 01736 757360

Mobile: 07778 739341



Fruit & Vegetables

Trade & Retail Welcome

Free Delivery



01736 757992 (24hr)



readyfresh@gmx.com



@readyfresh

North Quay, Hayle TR27 4BL

New Veg Box Service in Hayle

Ready Fresh – fruit and vegetables, of North Quay would like to wish all Hayle Pump readers a Happy New Year. We have been on North Quay for eleven years now but are relatively unknown outside of the trade. We supply fruit, veg and catering supplies to restaurants, pubs, hotels etc., and more recently homes. We also stock coal and logs and seasonal goods. We welcome new trade and retail customers and are happy to discuss prices or availability anytime. We have long-standing relationships with

local farmers who grow fantastic produce year-round for us. Cauliflower, potatoes and in warmer months strawberries and a full range of herbs are just a few to mention.

We now offer select-your-own produce boxes, with £5, £10 or £20 options available. You tell us what you want, and we'll put in as much as we can. Typical savings on supermarket equivalents are 10 -20%. Or just ask for a selection box. We can also fully prepare your vegetables for you, ideal for a large family roast or a party. Try it and see for yourself!

Call 01736 757992 (24hr)

'Appy New Year'

The 'Hayle Churks' mobile phone app is published on iTunes and completely FREE. Created by Lucy



Fears to play memories and show archive pictures automatically while walking around a Hayle route, there is also a manual feature on the published app, so that media can be heard and played from any location in Cornwall, Britain or the world.

W J WINN FUNERAL DIRECTORS

We are here to help you 24 hours a day

- Funeral Pre-Payment Plans
- Memorials
- Private Chapels of Rest

WJ WINN

Trenwith Terrace
St Ives TR26 1QE

Tel: 01736 793029

WJ WINN

69 Fore Street
Hayle TR27 4DX

Tel: 01736 752124

CHARLES BRYANT

North Road, Goldsithney,
Cornwall TR20 9JY

Tel: 01736 710318

MARAZION FUNERAL SERVICE

Back Lane, Marazion, Cornwall TR17 0HE

Tel: 01736 710318



Part of Dignity plc. A British Company.



MERITORIOUS

Unique from us to you

Email: meritcustomized@aol.com
www.meritoriouscrafts.co.uk

5 Penpol Terrace
 Hayle
 TR27 4BQ
 Tel: 01736 448281

**Over 100
 printable**

**Gifts with your or our
 Images with text option.**

**Hen/stag night, T-Shirts, Real Slate and
 Acrylic Photo Blocks, Mugs, Bags, Scarf's,
 Aprons, Plaques, Babygro's & MUCH more.**

**Clocks, Watches and fine Jewellery
 Bespoke Greeting Cards
 Crafting tools and supplies
 New and exciting Craft workshops for 2014**

Open till 6pm



The app is an abstract experience that involves walking through people's memories from different decades. The walker uses the information they have: their location, the story, archive pictures and historical facts on the map to try to piece together the clues. The app reveals and locates experiences



from Hayle's past and present which may nudge us to think about the future of the town and our own legacy. For more information look for 'Hayle Churks' on iTunes and historypin, 'Hayle History' on Facebook or hayle.history@btconnect.com.

One HEART

On Sunday February 9 at Hayle Methodist Church at 7pm there will be an evening of worship, testimony and praise. The band will be playing a selection of songs by Mark Grove and John Hammond, and sharing experiences they have had since finding a Christian faith.

FREE ADMISSION.

ALEXANDER McDONALD

GARDENING SERVICES,
 GUTTERING CLEARING AND
 FACIA BOARD CLEANING,
 AND ALL THOSE LITTLE JOBS
 YOU KEEP PUTTING OFF.

FREE ESTIMATES
 BIG ENOUGH TO COPE,
 BUT SMALL
 ENOUGH TO CARE!

MOBILE 07880 777591
 HOME 01736 753102



Dapper Dogs Coming Soon

After starting in business in 2006 with a mobile grooming van Lesley and Keith Thomas are now also opening a small parlour at 55 Penpol Terrace, Hayle.

City and Guilds trained Lesley does all the grooming with the hydrobath, grooming table and integral dryer, while Keith helps with the larger dogs.

They have a second Hydrobath on order which is the only thorough way of washing dogs, as well as massaging them – especially the larger breeds with thick coats. It's like a warm water massage and really helps with any skin conditions. They only have a small space, and won't be selling anything to start with, concentrating solely on the grooming process and their little clients.

Dapper Dogs opens in February at 55 Penpol Terrace and The Hayle Pump wishes them success in their new venture.

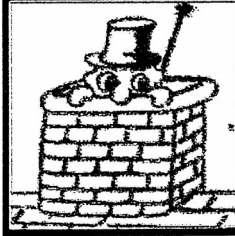
GUITAR LESSONS



Acoustic, Electric,
Bass & Banjo

All ages and abilities
All styles folk/rock/pop

Phone 01736 753709
Mobile 07866 372715



Lawrence Butcher Chimney sweep

Brush N Vac, Cowls Fitted,
Reliable Clean Service,
Free Advice

Enfield Farm
80 Hayle Road, Fraddam
Hayle TR27 6EH

01736 850033
07966 547829
loloubutcher@aol.com



David N'jie
PAINTER & DECORATOR

07944 156995 01209 831397

dn-jiepainter-decorator@hotmail.com
Trethannas Cottage, Praze-an-Beeble
Camborne TR14 0LH



shags, guillemots and divers forced to take refuge from the storms in our sheltered bays and estuaries. If you come across a sick or injured bird on the coast and you can capture it and put it into a box then please take it to Mousehole Bird Hospital or phone the RSPCA. If you would like to report dead birds please contact the Cornwall Wildlife Trust Marine Stranding Network on **0345 201 2626**.

On a brighter note, the estuary has been filled up with birds: Teal, Wigeon and Shelduck



**RSPB Hayle Estuary
Nature Reserve**

A very Happy New Year to all our reserve visitors. We have had an extraordinary winter, with lashing gales and extreme tidal surges. A very demanding time for RSPB staff and volunteers trying to keep on top of maintenance and litter clearance. The bad weather has had an impact on many of our much loved seabirds. Birds can be exhausted and starving, unable to hunt for food in extremely stormy conditions and you may find birds like

*Transformations
Cornwall*

*Give your home a luxurious finish
Create the style you desire*

*Bespoke curtains, blinds and soft
furnishings*

Handmade to a high standard

Professional, friendly service

*Elizabeth Gregg
17 Penpol Road Hayle
TR27 4AD*

*elizabeth@transformationscornwall.
co.uk*

*www.facebook.com/
TransformationsCornwall*

amongst the regular waterfowl. Waders too have been in good numbers with 600 Lapwing, 13 Grey and 1200 Golden Plover, 300 Dunlin and 30 Bar-tailed Godwits to name a few.



Shag at Carnsew Basin by Monty Curtis

Carnsew Pool has recently provided shelter from the gales for a couple of Great Northern Divers and a lone Black-throated Diver (always less common here than the Great Northerns). At Copperhouse, there has been a Water Pipit, Kingfisher and a Glaucous Gull but the star bird there has been an immature Bonaparte's Gull from North America, albeit we have yet to see it ourselves! Ryan's Field hosted a couple of Glossy Ibis in early December when there may have been up to four of these exotic southern European birds touring west Cornwall. More unusual fare have included Osprey and Spoonbill during the

HANDYMAN

EXPERIENCED & RELIABLE

"NO JOB TOO SMALL"

Completing all those jobs you've been meaning to do!

Painting / Decorating
Repairs / Flat-pack Assembly
Fencing / Sheds

CONTACT
RICK HARVEY
01736 752811



Shoreside Accountancy

Bookkeeping, VAT and Payroll Services

Mob: 07771866642

Tel: 01736751751

costa@shoresideaccountancy.co.uk

www.shoresideaccountancy.co.uk

We specialise in providing affordable bookkeeping and payroll services for small businesses and sole traders.

We are focused on providing high-quality service with great customer satisfaction.

Call today for a free, no obligation meeting to discuss your requirements.



THE INSTITUTE
OF CERTIFIED
BOOKKEEPERS
PRACTICE LICENCE No.13530

Shoreside Accountancy is a licensed practice with The Institute of Certified Bookkeepers

last week of August. Oh and of course we must mention Kingfishers which can be seen around the estuary throughout the winter. Please remember that you can join our litter picks from 10am to 1pm on the second Sunday of each month.

For more information please contact us on 01736 360624.



NAWT-ie and nice!

In the old Biscuit Factory at the Foundry end of Hayle, opposite the White Hart Hotel and next to the Launderette is a shop crammed full of goodies. This is the NAWT (National Animal Welfare Trust) charity shop, the purpose of which is to help raise funds to care for the unwanted dogs and cats at the Centre in Wheal Alfred Road, who have sadly been

abandoned, or whose owners have died.

Some of the donated items are brand new, it is well worth a visit to pick up a bargain.

If you enjoy a good read, there are plenty of books from which to choose.

We love to have dogs (and their owners) visit and keep a jar of doggie treats especially for them, sorry no freebies for humans!



HAYLE HARBOUR

Many members of the public regularly ask my Deputy and I what is involved in the management of Hayle harbour. Therefore apart from providing operational updates I would like to briefly provide an insight as to how we spend some of our working day. At this time of year the Harbour Authority updates all of its policies and procedures to ensure that changes in legislation are reflected for the

1ST CHOICE PAVING

Drives, Paths, Patios, Landscaping.



01736 753087 07969 960128

www.1stchoicepaving.com

Clifton Terrace, Hayle.

forthcoming year. The most major being that of the safety management system a requirement of a document named the Port Marine Safety Code. The responsibility of maintaining safety in Hayle harbour is governed not only by marine legislation, such as the Pilotage Act and the Merchant Shipping Act, but also general legislation, such as the health and Safety At work Act and the Dock regulations.

The Port Marine Safety code (PMSC) was developed by the Department for transport with the aim of improving safety in UK ports and to enable harbour authorities such as Hayle to manage its marine operations to nationally agreed standards. It provides the standard against which all polices and procedures and the performance of Hayle harbour can be measured. Its also describes the role of board members, officers and key personnel in relation to safety of navigation and summarises the main statutory duties and powers of Hayle Harbour Authority. Many of the documents generated as a requirement of the PMSC form the marine safety management system of the harbour which are based on formal risk assessment. Its purpose when fully implemented is to reduce

PILATES

Mat classes every Wednesday at
Hayle Community School

Beginners 6-7pm
Intermediate 7.10-8.10pm.

"In 10 sessions you'll feel the difference, in 20 you'll see the difference and in 30 you will have a fitter & stronger body"

**To book a place please call
Emma on 07879 483106**

**Fully qualified & experienced
Polestar Pilates UK instructor**

The Helston Pilates Studio

www.emmas-pilates.co.uk

YOUR OLD TAPES ONTO CD



**YOUR OLD CASSETTE,
REEL TO REEL TAPES,
OR 33/45/78 RPM RECORDS
ALL SAFELY TRANSFERRED
ONTO CD.**

Your precious memories saved forever.
Your own photos, information and dedications
can be included on the CD/DVD cover.

**Also now : old VHS video tapes
and Photos all onto DVD.**

Digital Recording for Singers and Musicians
Songwriters, Poets, Story Tellers, etc.
Also Musical Backing Tracks provided etc.

Contact: Steve Nunn. Telephone 01209 719481
www.cornmillstudio.co.uk
Email: cornmillstudio@aol.com

the risk of marine incidents occurring within harbour waters to a term known as low as is reasonably practicable. To ensure its compliance the harbour undergoes an annual external audit the results of which are reported to the Harbour Board and the Hayle Harbour Advisory Committee.
Peter Haddock Harbour Master

PCDT OUTREACH

Have you worries on Governance, difficulties, encouraging volunteers, funding shortfalls or just want to get impartial information, advice, guidance and support from an experienced and knowledgeable team for your organisation or project?

FREE CONFIDENTIAL ADVICE & GUIDANCE AT OUTREACH SURGERIES IN ST IVES AND HAYLE

Outreach Surgeries will be held the 4th Thursday monthly, or more often as required, starting with St Ives Library---9:30-12:30 on Thursday 27 February
 Hayle Day Care Centre 13:30-16:30 on Thursday 27 February 2014
 Thereafter similar times and venues on March 27th

Please ring PCDT on 01736 334676 to book your appointments
 Grayburn Owen
 Community Development Officer
 PCDT Tel: 01736 334676

*




Wallworx

Electrical Solutions

Where Honesty & Reliability come first

Domestic & Commercial
24hr Emergency Call out/Inspecting & Testing
 Additions & Alterations/PAT Testing
 City & Guilds Qualified/Part P Registered

Discounts for the Elderly & All Serving & Ex Armed Forces
 Free No Obligation Quote/All work Guaranteed

51 Mount Pleasant, Hayle
Office: 01736 601 428
Mob: 07554 520 927

PIANO LESSONS IN HAYLE

Peter luing (ex- head of music Hayle Community School) has now moved back into Hayle and can offer piano lessons on a Bechstein 6 ft grand, or a Zimmerman upright in his detached studio at 21 Gwel Trencrom, TR27 6PJ.
 A graduate of the Royal Academy of Music, he can also offer theory and composition lessons.
 The studio is also available for hire for practising.

Details on www.peterluing.co.uk

Or ring 01736 754225



Laudate Chamber Choir

has recently moved from Paul Parish Church to St Elwyn's Church in Hayle where it rehearses on Tuesday nights at 8pm during term time. Laudate is a 40 strong classical chamber choir of a fairly high standard which sings mainly traditional church and cathedral style music in concerts, recitals and church services. The choir sings in local parish churches and regularly deputises at Truro Cathedral and other similar places. Over the last 18 months, the choir has performed in Exeter Cathedral, Truro Cathedral and Bath Abbey deputizing for their own choirs.

Membership of the choir is open to adult singers who should (preferably) have at least reasonable music reading skills. The choir has 30 ladies and 10 men and there are vacancies for additional tenors. In early April, the choir will be holding two "Bring and Sing" performances of the Stainer's much loved work "The Crucifixion" to which members of other local choirs are welcome to come and join in. The choir is also learning works by Palestrina, Smart, Tallis and Gibbons amongst others. Details are available from Neil Shepherd on 07950 585787 or neilshepherd@yahoo.co.uk at www.laudatechoir.co.uk

TJ'S CARPETS LTD.



**New Showroom at Tolroy Garage,
58 Mellanear Road, Hayle TR27 6HF**

Come and see our wide selection of carpets & vinyls,
laminates and patterns

Our famous home selection service still available

Full range of flooring accessories

Call Now! 01736 757540 or 07976 608215

Free measuring & estimate service

"Before You Buy, Give Us A Try"

Hayle's BRAND NEW Fitness Studio

vfit centre
there's fit and there's vfit



- Body Pump
- Zumba
- Boxercise
- Blast FX
- Fight Fit
- Fight Fx
- Pilates

**The world's best
fitness classes right
on your door step.
Come and be a part of it!**

1 Trenawin Lane, Connor Downs, Hayle, TR27 5JG
Just off Angarrack Lane (Next to Westwood Timber)

Call now to book a class

07703 331 562

www.vfitcornwall.co.uk



VFit Cornwall



VFitCornwall

HELPING HANDS

Experienced, kind, reliable
Home Help/Carer.

Jobs I can assist you with include
shopping, personal care,
household duties, dog walking,
collection of prescriptions or
simply be a companion to chat to
over a cup of tea.

CRB checked and references
provided. Good hourly rate.

Please call for an informal chat

0774 0139333
01736 751751

A Sympathetic Lawyer?

One afternoon a lawyer was riding in his limousine when he saw two men along the roadside eating grass. Disturbed, he ordered his driver to stop, and got out to investigate. He asked the man, "Why are you eating grass?" "We don't have any money for food" the poor man replied. "We have to eat grass." "Well, then, you can come to my house and I'll feed you," said the lawyer. "But sir, I have a wife and two children with me. They are over there under that tree." "Bring them along," the lawyer replied. Turning to the other poor man he said, "You may come along with us also." The second man in a pitiful voice, then said, "But sir, I also have a wife and six children with me." "Bring them all as well," the lawyer answered. They all entered the car, which was no easy task, even for the car as large as the limousine was. Once under way, one of the poor fellows turned to the lawyer and said, "You are too kind." "Thank you for taking us all with you."

The lawyer replied, "Glad to do it, you'll really love my place, the grass is almost a foot high."

B Thomas

That Magnificent Man in his Flying machine

A Hayle man has pictured the harbour works from an unusual angle. Andrew Tyson photographed work at South Quay while flying his paramotor.



Hayle Surf Life Saving Club

is one of the top training centres, for the Surf Lifeguard award In the country. Hayle was in the top five last year as they trained and assessed 44 surf lifeguards, who went on to work with the RNLI on beaches around Cornwall.

While most people were grabbing their jackets, hats and gloves, Hayle Surf Life Saving Club was putting three of its members through their paces, testing them on their board rescue skills, spinal management, first aid and resuscitation skills. All candidates were successful, gaining them their surf lifeguard award.

For more information on future courses contact Club Captain, Dave Parker on 07967213204 or look at the club

www.hayleslsc.org.uk



Chartered with the FPC Code of Practice

TP
wills & probate
LIMITED

Will Writers & Probate Practitioners

Wills, Trusts, Lasting Powers of Attorney, Care Fee Protection, Funeral Plans & Probate.

Free initial consultation with no obligation. Evening appointment available at your home.

*It is never too early to make a will but often too late. No will can cause emotional and financial problems. For a small investment you can write what **you want in your will.***

Tel 01736 755125

Mob 07900 323939

email enquiries@tpwills.co.uk

18 Trelee Close Hayle TR27 4QB

www.tpwills.co.uk



**Want to play music?
You're never too old!**

**Learn music the fun way
with Graham Smith**

I'm a Registered Guitar tutor, a coach and session musician with over 30 years' experience. I believe that anyone can learn to play. I can help you to learn guitar, bass guitar and blues harmonica and to write songs and record them.

Call me on 01736 740141

(based near Penzance)

graham@musictuitioncornwall.co.uk

www.musictuitioncornwall.co.uk



Council Corner
February/March 2014

**King George V Memorial Walk –
Vehicular Access**

It is great to see that so many people, locals and visitors, are making the most of the King George V Memorial Walk on Sundays when it is closed to the vehicles. However, all users must remember that it is closed to vehicles except for access. There have been reports of incidents, to the extent where cars have been attacked and their drivers verbally abused when they are merely driving to their own home. Residents of the Walk have been issued with permits which will be

displayed in their windscreens and we ask that all users respect that some people will need to drive to and from their properties. The Police are aware that these incidents have occurred and have assured us that they will make regular visits to the Walk on Sundays.

Devolution & Community Assets

Discussions are continuing with Cornwall Council with regard to the return of assets and devolution of services with some positives outcomes. Further meetings have been arranged to progress the issues surrounding the handing back of the management of the amenity and recreational areas in the town.

Agreement has now been made regarding the levels of improvement works that must be undertaken prior

JC ELECTRICAL

Your complete 24 hour Electrical Service

**Rewires • New Build • Lighting •
Showers • Extra Sockets • Heating**

City & Guilds Qualified (Tests to BS7671)

Part P registered

Prompt and reliable friendly service

Free estimates and all work guaranteed

Office: 01736 754543

Mobile: 07739 577549



to returning the sites to Hayle Town Council. The Town Council will also be going out to tender for the future maintenance of these sites in the near future. If you are interested in submitting a tender please keep an eye out in the local press and the Town Council website.

Development of South Quay

Work has finally begun on South Quay. Town Councillors were recently invited for a tour of the site and the Mayor was selected, with the local MP and Cornwall Councillors, to officially mark the commencement of works by digging the first sod. The Council is receiving regular updates from the builders contracted to build the Asda Superstore, which is hoped to be open in Autumn 2014.

Beach Access Scheme

Hayle Town Council, with the support of Cornwall Council, continues to work on providing improved access to the beach for able and non-able persons. This scheme should assist visitors and residents alike and will particularly help the disabled, elderly and those with pushchairs gain access to the beach. Despite the horrendous weather of late, work on site has commenced and it is expected to be completed by the end of February 2014. The contractors, TMS Ltd, have lots of experience in building this type of structure and are making good progress. The access slope is located in front of the Bluff Inn and runs behind the RNL lifeguard hut on Riviere Towans and

LINDSAY'S DOG GROOMING

*Dog grooming for all sizes,
breeds & coats.
Specialising in Poodles.*



For more information,
contact Lindsay on
01736 753864 or 07792 849240



Situated at *Local*
Connor Downs *collection*
in Hayle *& delivery*

PAUL SHERRIS

**Hayle's only
local family owned
FUNERAL
DIRECTOR**
**Private Chapel of Rest
Pre-Payment Plans
available**
West Terrace, Hayle.
TR27 4JS.
01736 753969
Day or night

will be constructed of concrete. The support of the land and business owners in the vicinity has been instrumental in getting the project to this stage.

Budget and Precept Setting

At this time of year the Council is busy finalizing its budgets for the forthcoming financial year. Increasingly, more pressures are being placed on Town and Parish Councils to take on services or functions that are either being devolved to this level and/or no longer being carried out by higher tiers of local government. This makes our work all the more important and it really is a case of prioritization, particularly with the very real threat of capping hovering

over us. We don't want to see any current services lost but equally we have to ensure that the figures stack up. At the time of going to press the Council has not set its final budget, this is expected to be ratified on 30th January and submitted to Cornwall Council on 31st January. Details will be available on the Council's website, shortly after that date.

Hayle Community Centre and Frank Johns Centre

If you are planning on holding any meetings, events, classes, parties or looking for regular office space these may be the venues for you! Space is available for regular sessions or one off bookings. Remember that the CAB, Penwith Credit Union, Link into Learning and others hold regular

St Erth & Hayle Cars



**4 - 8 - 16 Seat Vehicles.
8 Seat Party Buses.
Polite, Friendly Staff.**

**Local Trips
Sea & Airport Transfers
Tours & Much more!**

01736 754000 or 01736 754040

**www.sterthandhaylecars.co.uk
info@sterthandhaylecars.co.uk**

sessions and surgeries. Contact the Town Clerk for details of services and available space.

Annual Citizens and Organizations of the Year

Nomination packs will soon be available from the Town Clerk's office and the Library for the Citizens and Organization of the Year Awards. The Council is also seeking nominations for Hayle Young Person of the Year and Hayle Youth Organization of the Year. The deadline for all nominations will be Thursday 17 April 2014.

Small Grants Available

Hayle Town Council annually awards capital grants to local clubs and organisations. If your group is in need of new equipment, kit or requires funds to secure other

sources of funding for larger projects please contact the Town Clerk's office for an application form. The Council's Resource Committee considers grants quarterly; the next meeting is scheduled for 10 April 2014. For consideration at that meeting please submit your completed application form by 3 April 2014.

Hayle Town Council

Hayle Community Centre

58 Queensway, Hayle

TR27 4NX.

01736 755005

townclerk@hayletowncouncil.net

M J MARINE ELECTRONICS

For all your marine electronic
installation supplies repairs
and service

Agents for Furuno
Standard Horizon Icom
Simrad & Lowrance

**Unit 4 Albert Pier
Penzance TR18 2LL**

**01736 330200
07971 281 888**

FURUNO



SIMRAD

ICOM

LOWRANCE

**Join us on board Penzance's finest angling boat
01736 330200 or 07971 281 888
www.penzanceboatfishing.co.uk**



Hidden Words Quiz 113

By Cleverclogs

This time we are looking for building materials or items of construction

e.g.

I love wild **BOAR** Done in the oven

Answer: **Board**

- 1. As a general rule of thumb, rickshaws have two rear wheels.**
- 2. The nearest one to me is at Connor Downs, which isn't too far to go.**
- 3. Once, men threw down their clothes for women to walk over puddles.**
- 4. I think it's large enough to have roast eel for dinner – a tasty change.**
- 5. "You're wearing two odd socks!" "Yes, I've another pair like it at home".**
- 6. I had fish and chips, my friend had sausages and chips.**
- 7. You can either use Marjoram or Tarragon as flavouring.**
- 8. He lay dying, uttering his last words "I thought I was in Heaven".**
- 9. When we were in Paris we went up the Eiffel Tower.**
- 10. She's late again, we'll miss the**

bus if she doesn't get here soon.

11. Still, we'll have to stay here until Esme arrives. Ah! Here she comes.

12. Moira's a bonnie looking lass dressed for her Scottish dancing.

13. I wanted to go on that trip. I pestered repeatedly until I was asked.

14. An apple a day keeps the doctor away, so they say.

15. We were in Israel – in Tel Aviv actually when the trouble started.

Answers to quiz in issue 112

1. Rat
2. Cony
3. Hare
4. Lemming
5. Beaver
6. Ferret
7. Woodchuck
8. Gerbil
9. Marmot
10. Rabbit
11. Hamster
12. Mouse
13. Gopher
14. Vole
15. Coypu

25 entries came from as far afield as Launceston and Somerset: The winner, picked by randomly computer generated number was:

Clifford Drew from Hayle

To win a prize voucher worth £20 to be spent with any of our advertisers send your answers along with your contact details to

editor@haylepump.org or either of the drop-off points on page 2.

Closing date March 13

Letters to the Editor

Dear Ed

With reference to your last quiz, I would point out that a HARE is not a rodent – it is in the order Lago-morphs.

A RABBIT – see above, also has two sets of incisor teeth, which rodents don't have.

FERRET – I couldn't believe this one. Ferrets are a member of the Mustelidae family. Obligate carnivore. Teeth like a cat or dog. Does not gnaw. Come and see mine if you like. (very friendly!)

From L.K.

(Thanks LK- your ferrets sound lovely Ed)

Dear Hayle Pump

I walk my boys to school every day in Hayle and find the amount of dog mess on the pavements disgusting. Could owners please clear up after their dogs and dispose of the mess properly. Where are the wardens to fine these people?

C Worthington



(I like dogs but I agree owners need to clean up after their pets! There is an £80 fine for dog mess! Ed.)

Send your letters/emails to: editor@haylepump.org.uk .

The Hayle Pump on Facebook, or drop them into Passmore Edwards Institute.



Webb & Philp Ltd
electrical contractors



All aspects of Electrical work undertaken

Free Estimates, No Job Too Small
Prompt, Reliable, Fully Qualified, Est. 1972

- ✓ Re-Wires
- ✓ Security
- ✓ Showers
- ✓ New Build
- ✓ Testing
- ✓ Maintenance
- ✓ PAT Testing
- ✓ Extra Sockets & Lights

Telephone/Facsimile 01736 753651 Mobile: 07768 210227
email: electricians@webbandphilp.co.uk

CLUB LISTINGS

Hayle in Bloom. Last Monday of the month, except for Aug & Dec. Held at Hayle Rugby Club 7pm.

www.hayleinbloom.org.uk

Hayle Community Archive.

Open Tuesday & Thursday 10 a.m. –

1p.m.:Tel 01736 753962, email:

haylearchive@haylearchive.org.uk

Facebook: Hayle Community

Archive.Twitter:@hayle archive

Hayle Darby and Joan Club.

Fortnightly on Fridays at 2:30 pm.

Methodist Church Hall. Tel 01736

711134

Hayle & District Bowling Club.

10am every Sunday. Short Mat bowling

indoors during winter 01736 753565

St Ives and Hayle Community Choir.

Tuesdays, 2pm St Anta Church Hall,

Carbis Bay. All welcome

Hayle Film Club. Films shown on the

2nd Saturday of every month at 7.30

p.m. at The Passmore Edwards Institute.

Ph Donna 01736 753184. Check on

www.haylefilmclub.org.uk

Hayle Flower Club. 4th Wednesday of

the month 7.30pm, Hayle Daycare

Centre in the conservatory Tel: 01736

793338

Hayle Harbour Users Association.

First Monday of each month, 7.30pm,

Royal Standard Pub. R.Lello 01736

757632 .

Hayle Judo Kwai. Meeting at The

Downes, Foundry Hill, Tues & Thurs.

Sensei Richard 01736 740723 Lucy

Alldritt, sec. 07581490714

Hayle Library Reading Group. 2.00pm

first Wednesday of each month. Free.

Contact Hayle Library.

Hayle Line Dancing Club. Every Mon.

at Hayle Methodist Church 7.30–9.30pm

Adults £3, Children £1 (includes light refreshment). Car parking available. Tel 01736 752610.

Hayle & District Lions Club. 2nd and 4th Tuesday of every month, 7.30pm at Passmore Edwards Institute.

Tel. Mel George 01736 756484

Hayle Model Boat Club. Wednesday evenings 7-9pm & Sunday mornings 10-12 noon, meeting at green chalet by

Hayle outdoor swimming pool. Tel:

01736 755516, or Les on 01736 754254

Hayle Meanderers Every Wed.10.30am Commercial Road car park. Free, + contribution to carshare.

Tel Joan Smith 01736 793631

Hayle Old Cornwall Society. First Friday of each month. Oct. to May.

Passmore Edwards Institute.7.30pm.

. Maria Prosser, 01736-755072

Hayle Pilot Gig Rowing Club. Rowing out of Hayle Harbour most Tuesdays and Thursday evenings

Tel. 01736 754254

www.haylegigclub.com

Hayle Local Vocalz - a 65 strong mixed voice adult choir. Mondays, 8pm, St Elwyn's Church, Hayle. 07950 585787

Praze Hayle Choir. Every

Tues.7.30pm. Methodist Hall

Don Metcalf 01736 757720

Hayle Model Railway Club & Duchy

Railroaders Club Rooms Unit 5, Praze

Business Park, Praze-an-Beeble. Mon.

& Thurs. 7pm – 9.30pm.Bob Mims

01736 757910 bobmims@live.co.uk

Hayle Rotary Club. Monday 7 pm

except Bank Holidays White Hart Hotel,

David Raymer 01736 755029 or

Trevor Osborne 01736 793596

The Rotary Club of St Ives Bay

New Rotary Club for men & women

meeting on Tuesdays at the Carbis Bay

Hotel 6.30 for 6.45pm. Contact:
secretary@stivesbayrotary.co.uk

Hayle RNLI meets Mar to Nov at 7.30pm 2nd WED of the month at Unit 5, Hayle Ind Park. Tel: 01736 753567
Save our Sand. 2nd Tuesday of each month, 7.30pm at the Passmore Edwards Institute. Hayle

Heyl St Piran Singers. Every Thursday at Hayle Methodist Church Hall at 7.30 to 9.30pm. Ann Birch 01736 752335

Royal British Legion. Passmore Edwards Institute. Every Mon. Wed.& Fri evening, and Sat.afternoon.
Tel:07743276412 Mr. John Bawden.

St Erth Concert Band
Rehearsals Tues 7.30 to 9.30pm in Methodist Church Hall
G.Lawry 01736 755512
www.sterthconcertband.co.uk

St Erth Friendship Club for the over 60s. Tuesdays 2pm – 4pm St Erth School Hall £1.50 per session.
01736 850758

Hayle Surf Life Saving Club
Riviere Towans Hayle TR27 5AF
Captain: Dave Parker 755303

Table Tennis for Fun, every Friday at 2pm at Hayle Methodist Church Hall, Chapel Hill, Hayle. Only £2 per session. Bats, balls and squash provided. John Nunn 01736 759686

Heyl Town Band. Rehearsals Tuesdays & Thursdays 7:30pm – 9:30pm, Junior band rehearsals Thursdays 6:pm – 7:00pm

Hayle Twinning Association. 2nd Mon. of each month at Hayle Community Centre. 7.15pm in Room 7. Mike Stuckey 01736 753755,

Hayle Penwith U3A Hayle Day Care Centre Social meetings 2nd & 3rd Thurs.

2pm. Art, History, Writing, Play reading, Current Affairs, Luncheon Club.
Chairman Mel George 756484 Secretary Tess Hulland 759658

W.I. Hayle 1st Tues.of the month, 7.30pm, Hayle Daycare Centre
Tel. 01736 754089

Phillack Church Hall. Bingo: 1st Friday, 7.pm.Church Lunch: 2nd Saturday 12.15Quiz : last Saturday, 7.30 p.m. Phillack Parish Church 9.15 am services every Sunday (except 5th) preceded by beautiful bellringing.

Laudate Chamber Choir- a 40 strong church/cathedral style chamber choir
Tuesdays 8pm, St Elwyn's Church, Hayle:Tel 07950 585787

St Ives and Hayle Community Choir
Tuesdays 2pm to 3.30pm at St Anta Church Hall, Carbis Bay 07950 585787

To appear on this page free of charge drop in details to :

Passmore Edwards Institute or Home Trading

28 Penpol Terrace, Hayle.

Or email editor@haylepump.org.uk

Matthew Blackmore
Plumbing & Heating Services

Central heating installations, maintenance and repairs.
Bathrooms & wet-rooms etc.
Gas Safe registered. Free estimates.

Call 07873418280

www.matthew-blackmore.co.uk

"Job" Vacancies

Hours: 2 or 3 per issue

Wages: zilch, zero, £0

The Hayle Pump needs more volunteers to help with advert production and news gathering. If you fancy yourself as a roving reporter or can just send in some interesting stories that we could cover then we d love to hear from you.

Or if you have IT skills particularly in graphics and dtp, could you spare a few hours to make up adverts.

Email:

editor@haylepump.org.uk

or post on Facebook

The Hayle Pump

Hayle Pump on Facebook

For those of you on the internet, The Hayle Pump now has a Facebook page. We will be updating stories that fall in between issues and would welcome your posts and ideas. Search for 'The Hayle Pump' on Facebook and like our page. On Twitter look out for Cornish Bygone Times @PRSCREDDA who post old photographs of Cornwall including some shots of Fore St Hayle, a 1900 Hayle regatta, the level crossing, the power station and the harbour. Also don t forget that you can view all past issues of The Hayle Pump online at;

www.haylepump.org.uk



S.B.S.M.

**SUE BUTLER SCHOOL OF
MOTORING OFFERS DRIVING
INSTRUCTION FOR ALL
ABILITIES.**

**INTRODUCTORY OFFERS
AND BLOCK BOOKING
AVAILABLE.**

FOR MORE INFORMATION

RING 0777 333 0176 or

Email

susanbutler29@hotmail.com

MUSURA 
CHARTERED BUILDING SURVEYOR AND BUILDING DESIGN

Residential Building Surveys

Design Planning and Building Regulation

Schedules of Condition

Party Wall Advice

Professional Consultants Certificates

Scott Matthews Dip Surv MRICS

Chartered Building Surveyor

Contact 07834 538994

www.musura.com

email: scott@musura.com



ADVERTISERS INDEX

- 28 1st Choice paving
- 8 All Aerials
- 24 A McDonald
- 11 Angove Sports
- 10 Barton Print
- 10 Berwick Estate Agents
- 21 Biz & Bytes
- 25 Butcher Chimney sweep
- 3 Café Riviere
- 11 Cleaner Carpets
- 19 Cliffords Plumbing
- 15 C omputer Coach
- 29 Cornmill Studios
- 16 Cornwall Chiropractic
- 5 Country Skittles
- 14 County Councillors
- 7 C Spray Bath Renovations
- 26 David N'jie Decorator
- 6 Des Button Electrician
- 4 **Farm Shop The**
- 44 **Flowertime**
- 9 Gallery Coffee Bar & Gifts
- 33 Graham Smith Music Tutor
- 25 Guitar Lessons
- 12 Gwyns Yoga
- 5 Hayle Cycles
- 43 Hayle Day Care
- 32 Helping Hands
- 15 John Andrews Joinery
- 34 J.C. Electricals
- 9 Kernow Car Valeting
- 14 Kleeneze
- 12 Ladies Room
- 35 Lindsay's Dog Grooming
- 37 Marine Electronics
- 41 Matthew Blackmore
- 8 Melrose Bags
- 24 Meritorius
- 21 Mobile Foot Clinic
- 42 Musura
- 20 Nick Farrar Windows
- 4 Paradise Park
- 7 Passmore Edwards
- 35 Paul Sherris Funeral Service
- 18 P.D.H. Builders & Roofing
- 30 Peter Luing Piano Lessons
- 22 P G Franklin
- 17 Philps Pasties
- 29 Pilates
- 18 Plantech
- 22 Readyfresh
- 27 Rick Harvey Handyman
- 42 SBSM Driving School
- 27 Shoreside Accountancy
- 6 Sleepy Hollow
- 36 St Erth Cars
- 13 T Cee Tech
- 31 TJ Carpets
- 33 TP Wills
- 26 Transformations
- 32 Vfit
- 30 Wallworx
- 39 Webb & Philp Electrical
- 23 W J Wiinn Funeral Director

Send your adverts to
ads@haylepump.org.uk
 Send any copy to:
editor@haylepump.org.uk



HAYLE DAY CARE CENTRE **Commercial Road, Hayle**

An affordable day care facility for the elderly of Hayle, St Ives and district

Transport ▪ Freshly cooked meals

Also includes bathing and hairdressing
 Therapy and lively social interaction

Always a friendly welcome

Call 01736 755000

Win your Mum a Bouquet for Mother's Day*

Draw / paint a picture of
your mum & a bouquet of Flowers
bring your artwork into store by 18th March,
all art will be displayed in store.

2 AGE GROUPS 6 & UNDER

*see in store or facebook
for t&c

7 TO 12

www.wesendflowers.co.uk

FlowerTime for all your:-

send flowers from here

Cornish Chocolates

Stationery

gift-wrapping & Bags

Greetings Cards

gifts cornish soap

Jewellery & more

01736 757006

Pet Time for all your:- wildbird treats Cornish dog treats

Pets requirements

collars, leads, beds

foods and treats

Treatments

TOYS

