

HAYLE PUMP NEWSLETTER

Flowertime Competition Winners



Esme age 6



Sarah age 7



FREE COPY

Thanks to our volunteers and advertisers

Circulation 2500

The Hayle Pump is a volunteer produced community newsletter.
If you would like to volunteer or send in any local stories, events, or articles, email editor@haylepump.org.uk or drop off your articles at ANGOVE SPORTS, BEANBELT or PASSMORE EDWARDS INSTITUTE.

Send your adverts to adverts@haylepump.org.uk

Editor

Rich Morgan

editor@haylepump.org.uk

Desk Top Publishing

Jeff Turk

dtp@haylepump.org.uk

Treasurer

John Jansen

treasurer@haylepump.org.uk

Advertising

ads@haylepump.org.uk

Web Site

John Bennett

webmaster@haylepump.org.uk

Team Members

Sarah Turk, Jeff Turk, Paul Scott

Samuel Marsden,



Hayle Pump Newsletter
Passmore Edwards Institute
13-15 Hayle Terrace,
Hayle,
TR27 4BU
www.haylepump.org.uk

Front Cover



The winning entries of the Flowertime competition to 'Draw a picture of your Mum with a bouquet of flowers.'

Esme age 6

Sarah age 7

Both Winners won a beautiful bouquet of flowers for their Mums for Mothers Day.

BIZ AND BYTES

07974 647524 01736 755971

If you require computer assistance, either training or to resolve a problem then give us a call. Visits arranged to suit you.

Looking after the home user and small business.

WEBSITES • BROADBAND • TRAINING •
COMPUTER SUPPLY • TYPING



www.bizandbytes.co.uk

enquiries@bizandbytes.co.uk



Hayle CYCLES

MOUNTAIN - ROAD - BMX SPECIALIST

Bicycle Sales and Repairs

Tel: 01736 753825

36 Penpol Terrace, Hayle TR27 4BQ

www.haylecycles.com

Editorial

Spring at last and after the worst winter in 250 years, I m relieved to see sunshine, our yellow fields of daffodils, and new life in the fields and hedgerows. If like me, the Winter has left you pale, flabby and bedraggled then take a look at our feature in the centre pages 'Get Ready For Summer'.

It seems Hayle is also getting a makeover with a £4 million grant for the Harvey's Foundry site, the new Fire station under way , 800k spent on safer access to the Railway Station and a new path to the beach from 'The Bluff'. The Wave Hub is also gaining customers and leads the world in wave power technology. There are big plans for 2 large shopping centres and also some housing developments that split opinions. If you want to have your say, one way or the other, there are meetings to attend or contact the local planning department.

Our local businesses will be hoping for a good season ahead to catch up. Figures show that if we all spent just 50p on local produce it would contribute an extra £10 million to the Cornish economy. Enjoy the Spring and do your best to support our local traders.

Rich Morgan

N.B. All articles are accepted as points of view and are not necessarily the opinion of the Editorial Team

THE FARM SHOP

31 Penpol Terrace, Hayle
TR27 4BQ

**Open - 6 days a week
8am– 5pm**

FOR ALL YOUR LOCAL PRODUCE

Fruit, vegetables, plants, flowers,
free range eggs and
Cornish potatoes.

NOW IN

Bedding plants,
New Cornish potatoes,
Local strawberries

Café Riviere

Across Hayle's Jubilee Bridge

**Serving a variety of hot
food, late breakfasts,
drinks, ice-cream, cream
teas and snacks.**

- *Indoor and outdoor seating.*
- *Take-away is available.*
- *Open all year.*
- *Next to the public open-air swim pool, sub-tropical gardens, promenade and nature reserve.*

New to Hayle



Bride and Chic

Dress designer and
stylist Sue Seabury
has just relocated to

Connor Downs, having lived in Spain
for some time. Although originally
from St Ives, where she successfully
had her business for many years,
she was drawn back to her roots and
the place she feels happiest.

Formally trained at the London
College of Fashion, where she
gained her degree, Sue felt so
passionate about offering a bespoke
service for Bridal Wear and Day and
Evening Wear at affordable prices
that she set up on her own and has
never looked back. Having worked
for famous designers, including
**Bruce Oldfield, Lindka Cierach
and Jasper Conran**, Sue has had
the privilege of helping to create the
Duchess of York's wedding dress,
as well as working on famous outfits
worn by stars such as **Lisa Butcher,
Catherine Zeta Jones and
Charlotte Rampling**.

With Sue's friendly and expert
advice, she can create something
that will suit you, no matter what
shape or size you are.

There are sumptuous fabric books
to browse through, and no end of
designs that can be sketched for
your individual requirements.

A "re-vamp your wardrobe" is also
available, to make the most of what
you already have by restyling it.

Bridalwear Specialist

Day and Eveningwear

Alterations/Repairs

Curtains/Cushions

Affordable prices



Tel: 07565539969

www.brideandchic.com

Sue Seabury

ANGOVE

SPORTS

COPPERHOUSE, HAYLE

TEL.: (01736) 752238

For all Sports Equipment,
Clothing, Footwear and
Fishing Tackle

Rackets Repaired and
Restrung

And even the smallest jobs, alterations and repairs, a new zip or perhaps trousers shortened?

There is also an interior design service, for all your curtains, cushions, bed throws and blinds. Why not look at Sue's website...

www.brideandchic.com

Or contact her on 07565 539 969

soo_seabury@hotmail.com

ASPIRE to Fitness

It's what Hayle has been waiting for. Two local men have partnered up, combining their different skill sets to bring you **Aspire, Hayle's first fitness and well being centre.**

A fully equipped gym with a vast range of fitness equipment catering for all your fitness needs. Fully qualified staff will give you lots of support and advice to help you achieve your goals. There is always extra help available as well and if you lack motivation and really want that extra push, personal training will definitely get you **excited about exercise.**



For More details:

Tel: 07828193869

www.aspiresw.co.uk

info@aspirew.co.uk

Country Skittles NEW

AMERICAN MENU

- Burgers up to 20oz!
- Chilli Dogs
- Chicken New Yorker
- Juicy Lucy
- Mac 'n' Cheese
- Sloppy Joe's
- and lots more!

PLUS OUR USUAL MENU



Opening Times

SCHOOL & BANK HOLIDAYS:

Mon to Sat: Noon to 11pm

Sunday: Noon to 10:30pm

ALL OTHER TIMES:

Mon to Fri: 6pm to 11pm

Sat: Noon to 11pm

Sun: Noon to 10:30pm



Townshend • Hayle • TR27 6ER

01736 850209

www.countryskittles.com

BARTON print

Tel: 07799 411525
Fax: 01736 757022

Quick Reliable General Printing Service

JUST A SMALL SELECTION OF THE SERVICES WE OFFER!

- BUSINESS CARDS
- COMPLIMENT SLIPS
- NCR PADS / SETS
- LEAFLETS
- MENUS
- NEWSLETTERS
- ENVELOPES
- LARGE FORMAT PRINTS
- LETTERHEADS
- OVERPRINTING

- RAFFLE TICKETS
- B/W COLOUR COPYING

COMPETITIVELY PRICED

1 Turnpike Road, Connor Downs

Telephone 07799 411525 01736 754220

The Sleepy Hollow

Your Alternative Gothic Gift Shop

Family-run Gothic Gift Shop

Selling a wide range of Gothic gifts,
candles, incense, clothes and more

Incorporating:

Sleepy Hollow Herbals,
Medicinal & magical herbs,
Tissaries, and
Hand-blended incense and oils.

Visit our shop at Unit 3 - Pratts Market,
Chapel Terrace, Hayle TR27 4AB

07747 078274

www.thesleepyhollow.vpweb.co.uk

Hayle & District

Bowling Club.

Ever wanted to try `Curling` well we play bowls which is curling on grass/carpet without the ice and shouting. The game is similar; in that bowls (curling stones) are rolled down a rink and being biased they curve inward towards the `jack` with the aim to be nearest to it after all the bowls are played in that end.

This is played with two, three or four players. Big muscles not needed.

The good news is we at Hayle Bowls have our opening day on **Saturday 12th April at 2pm**. This is a fun afternoon with Ladies v Men. We invite you to come along and join us, have a try (and a cup of tea), at no cost and we will supply all that's needed for you to take part.

Spectators are also welcome as we have plenty of chairs.

Where are we:- From Foundry Square, to the left of the White Hart Hotel, past Penpol School on the right, another 50 yards then turn left and immediately left again into the car park which looks down onto the green below. We look forward to seeing you, if you need any more information please give Adrian a call on 01736 753161.

**Penwith Radio require volunteers
as presenters, production
assistants, technicians or tea
makers. Any age, all welcome!**
www.penwithradio.co.uk

Harbour Trust – Help!

We have had many offers of help from the community following our request for volunteers. In fact, we have so many we now need a Volunteer Coordinator. If you would be interested in this role, please contact us. The duties would be to stay in touch with volunteers through regular communications, have occasional meetings and seek to find new volunteers for specific purposes. No experience is necessary – just a bit of enthusiasm. For the latest information on the Hayle Harbour Trust, search for Hayle Harbour on Facebook.

John Bennett, Chairman,
www.hayleharbourtrust.org.uk

Phillack Church Spring Fair

*Watch out for beautiful bargains in
Phillack Parish Hall, Copperhouse,
Saturday, 17 May, from 10 to
1.30.*

*Plants, home-made cakes, books,
raffle, Pluck-a-Duck, special things
found in Granny's attic and even
some hidden treasures.*

Refreshments will also be available.

*(How does Moses make his tea?
Hebrews it.)*

PASSMORE EDWARDS
INSTITUTE



MEETING ROOMS FOR HIRE

Hayle's Village Hall
has rooms for 2 to 60+
Children's Parties
and Catering

For more information:
WWW.HAYLE-PEI.ORG.UK
bookings@hayle-pei.org.uk
Or call: 07784-377576

13-15 Hayle Terrace, Hayle, TR27 4BU
Charity Number 268429



Baths and Kitchens

**Bath Resurfacing
and Repairs**

**Pressure washing
Domestic and Commercial**

Patios ● Driveways ● Paving
● Decking ● Walls
- no area too small -

**Contact for details:
01736 756077**



If you thought we have had trouble with the recent storms, spare a thought for our wildlife. Seabirds in particular have been affected the most with Razorbills and Guillemots being washed ashore around the coast in quite high numbers, sadly most of these are dead. A few live Guillemots have even been seen swimming in Lelant Water, sheltering from the weather – estuaries are not their preferred habitat! So too have Great Northern Divers with unusually high numbers around the Bays – and again regularly seen in Lelant

Water and Carnsew Pool of late. A dead Otter on the Hayle Causeway on 15th February was a road casualty, however, not weather related.

We've had rather few waders this winter and are not sure why this should be but the Environment Agency have been mapping the green algal beds across the estuary and have discovered a marked increase in their cover – which may be good news for wildfowl which eat the algae but bad news for waders whose food supply (worms etc underneath the mats) becomes smothered. The EA are investigating the cause of the increase in cover but it is likely a result of eutrophication from high levels of nitrogen and

Pasties by Post

'Pasties by post' is now available at Philp's Bakery. Use our courier service to have our Genuine Cornish Pasties delivered to your door.

Alternatively, you can send our pasties to relatives out of the county or to a member of the family at university.

by Philp's of Cornwall

Philp's Up Country

Pasties by Post

GENUINE CORNISH PASTY
MADE IN CORNWALL

Contact us by:
Phone: 01736 753343
or 01736 755661
Website: philpsbakery.co.uk

phosphorus brought in by the rivers from farmland in the catchment. With so much rain this winter the rivers have been running brown and are likely to contain high levels of nutrients from which the algae benefit .



Hayle

In Bloom

At the last AGM meeting I was elected the new Chairman of Hayle in Bloom. Thanks have to be given to Margaret Tanner for the last 7 years which she spent as Chairman. She is still very much involved. She is working on the Blooming Bee Friendly project and is still organising the *Blooming Hayle Celebration day. This year it is being held on the 29th June.* We have a lot of work to do this year to keep our gold award standard in the South west in Bloom awards. We have very little funds to work with this year, so we have a lot of fundraising to do. Look out for our fundraising sales at Phillack Church Hall. We also plan to have an exhibition of the work Hayle in Bloom has done in Hayle over the last 12 years since we first formed. There will be a coffee morning held in conjunction with this. We will keep

The Gallery Coffee Bar

Warm & welcoming
With comfy indoor & courtyard seating

Pop in for a

- ❄ Hot Chocolate melts. A whole bar of chocolate in every cup
- ❄ Great Coffee
- ❄ Delicious Homemade Cakes
- ❄ All Day Breakfasts
- ❄ Warm Bacon Rolls served all day
- ❄ Soups, Jacket Potatoes, and
- ❄ Cream Teas



Now selling a range of affordable gifts.

Open from 9am — 5pm

1 Chapel Terrace, Hayle
(by viaduct) 01736 756829

Dogs are Welcome



MERITORIOUS

Unique from us to you

Email: meritcustomized@aol.com
www.meritoriouscrafts.co.uk

5 Penpol Terrace
Hayle
TR27 4BQ
Tel: 01736 448281

Over 100
printable
Gifts with your or our
Images with text option.



**Hen/stag night, T-Shirts, Real Slate and
Acrylic Photo Blocks, Mugs, Bags, Scarf's,
Aprons, Plaques, Babygro's & MUCH more.**

**Clocks, Watches and fine Jewellery
Bespoke Greeting Cards
Crafting tools and supplies**

New and exciting Craft workshops for 2014

Open till 6pm

you posted on the date and venue of this closer to the time. Have you ever wished to help Hayle in Bloom out? We are always looking for volunteers. We don't just need willing gardeners to adopt a plot; we also need help from carpenters, painters, and many other trades. There is always something that needs doing. So you are always welcome. If you can't donate time, you can still help us. We always welcome donations of plants, seeds, etc. You can contact me by phone on 07788707018 or 01736754787 and by email at annemarieance73@gmail.com if you have any questions or would like to volunteer.

Hayle Film Club offers double bill in April

Upon the heels of a sold-out screening in March for the much nominated **PHILOMENA** and a good turnout the next night for the 1963 Bengali classic **THE BIG CITY** (accompanied by samosas and Cobra beer), **Hayle Film Club** will end its winter-spring schedule on Saturday, 12 April, with two more enjoyable and well-received films.



At 2.30pm we'll present a matinee screening of the acclaimed Arabic-language drama **WADJDA**,

about a young girl from Riyadh who dreams of owning a green bicycle, something only allowed for boys in Saudi Arabia.

WONDERFUL WILDLIFE AND INDOOR PLAY AT PARADISE PARK!

Cornwall's award-winning wildlife sanctuary with rare tropical birds, penguins, otters & farmyard friends. Plus fantastic JungleBarn indoor play and Paradise Island outdoor play.

Lots of fun for Easter - new timetable starts 5th April plus 'Easter Egg Trail' (April 5th to 21st)



FOR NEWS AND SPECIAL OFFERS JOIN US ON FACEBOOK



Paradise Park, Trelissick Road, Hayle
Open every day at 10am Infoline: 01736 751020 www.paradisepark.org.uk

To earn the money to buy it, she enters a Koran-reading competition. This wonderful film is not only a rare insight into modern Saudi society, it is the first to be entirely photographed in Saudi Arabia and the first to be directed by a female Saudi filmmaker. Rated PG, it's suitable for young persons and up. Named one of the **Top 10 Films of 2013** by the *Guardian*. (In Arabic, with English subtitles.)

That evening, at 7.30pm, it's **SAVING MR BANKS**, starring Tom Hanks as Walt Disney and Emma Thompson as spirited author P L Travers. The drama revisits a proud moment in Disney's history, the making



of *Mary Poppins*, the most expensive live-action film the company had produced by the early 1960s, and eventually one of the most lucrative and beloved. Book early, as we expect this film to sell out.

Screenings take place upstairs in the Passmore Edwards Institute. Tickets are £5 (no concessions), or £4 for members, available from the Bean Belt (Penpol Terrace), or by calling Sarah Turk on 01736 752319, or online at www.haylefilmclub.org.uk. Tickets on the door are subject to availability.

Evening screenings are followed by free homemade refreshments.

Hayle Film Club's sponsors include Hayle Town Council, the Co-op Membership Community Fund, and the Cornwall Council Community Chest.

Donna Anton, Chair
01736 753184



TP
wills & probate
L I M I T E D

Will Writers & Probate Practitioners

Wills, Trusts, Lasting Powers of Attorney, Care Fee Protection, Funeral Plans & Probate.

Free initial consultation with no obligation. Evening appointment available at your home.

*It is never too early to make a will but often too late. No will can cause emotional and financial problems. For a small investment you can write what **you want in your will.***

Tel 01736 755125

Mob 07900 323939

email enquiries@tpwills.co.uk

18 Trelee Close Hayle TR27 4QB

www tpwills.co.uk

Kernow Auto Glean

Car Valeting Services



For Prices on Services

please contact

07788 459884 or

harry@kernowautogleam.co.uk

Services include
Basic Hand Wash
Wash and Vacuum
Budget Vacuum
Full Valet
Interior Valet
Exterior Valet



Des Button
SPRINGFIELD
33 Clifton Terrace
Hayle TR27 4BP
ELECTRICAL
SERVICES &
SUPPLIES

01736 753211



PART P
REGISTERED



ALEXANDER McDONALD

GARDENING SERVICES,
GUTTERING CLEARING AND
FACIA BOARD CLEANING,
AND ALL THOSE LITTLE JOBS
YOU KEEP PUTTING OFF.
FREE ESTIMATES
BIG ENOUGH TO COPE,
BUT SMALL
ENOUGH TO CARE!

MOBILE 07880 777591
HOME 01736 753102



**£4million Lottery grant for
Harveys Foundry.**

Harvey's Foundry Trust has been awarded £4million from HLF to conserve and adapt for commercial use the remaining derelict Grade II listed buildings at the 19th Century Harvey's Foundry in Hayle. This new



grant will unlock the potential of the final two historic buildings on the site. It will fund vital repairs that will enable them to be converted to office space. These buildings will then have the potential to attract an additional £4million of private investment that will boost Hayle's local economy and potentially create 84 new jobs. This new funding, awarded through HLF's innovative Heritage Enterprise programme, heralds the final phase of the 10 year regeneration of Harvey's Foundry. The regeneration has already seen this derelict, yet historically important, site transformed into a vibrant centre housing forty businesses that have generated over 150 jobs. For more information about Heritage Enterprise and see our film, visit www.hlf.org.uk. For more information on the project and

the Trust, please call Laura Christon on 01736 757683.



paying your council tax, garden waste applications to bus passes. We do it all!! The Book group Chapter & Verse still meet on the 1st Wednesday of the month from 2-3pm and the Writers' group still meet in the library every other Thursday morning from 10-12pm when we are closed to the public.

We have a Bounce and Rhyme session for babies and toddlers on Wednesday mornings at 10.30 and Storytime for the slightly older children after school on Tuesdays at 3.45 where Abi reads stories and they do a craft/activity.

Apart from plenty of great books for children we have a special collection of fiction, graphic novels and manga for young adults, so with our huge range of adult books, including large print, audiobooks, and a wide selection DVDs for all ages we're sure we have

Hello from Hayle Library and One Stop Shop.

We haven't been in the Pump for a while (our fault) but we're as busy as ever, providing the usual range of library and council services from issuing books to

Computer / Laptop Problems?

I can restore your computer or laptop to full working order for a fantastic price

NO CALL OUT CHARGE

Professional repairs and maintenance of full systems and networks

Call today for a FREE no obligation quotation

**PC REPAIRS • PC NEW BUILDS • PC REBUILDS •
PC UPGRADES • PC TRAINING • DATA RECOVERY •
NETWORK INSTALLATION & MAINTENANCE**

For a prompt and reliable service
call Tim Cogher at TeeCee Tech today



07730 283433



01736 850798

**All your favourite hard to find
Homecare Health products and
quirky gadgets.**

NOW ONLINE

www.kleeneze.com/nickpincott

This 88year old British catalogue company has joined the Web!
Order online but still receive the friendly free delivery and pay on arrival, service from your local distributors.

All online orders will receive a FREE mystery product sample!

PH 01736 850840 07957897270

See you soon,
Nick & Jan Pincott

something for everyone. We also have public access computers which all library members can use for half an hour free a day.

So come down and see us. And if you're not a member already, remember it's free to join. You just need to bring proof of your address.

See you soon.

Hayle Library Team



**Hayle Rotary
Club**

The club welcomes visitors to their meetings and were pleased to have a talk recently about the South Devon Railway by volunteer enthusiast Rev. Canon Tony Neal, former Rector of the Godrevy Ministry. President David Jones surprised Tony by presenting him with a top Rotary award for his outstanding contribution to the local community over many years. Tony is an honorary member of the club and was delighted to accept the award. Our beetle drive in February was well attended and raised funds for three emergency water boxes which will be sent to the Philippines. The boxes contain essential welfare items for families and water purification equipment to provide safe clean water. Thanks to the DayCare Centre for the use of their facilities.

The annual Rotary District Conference took place in Falmouth



NORTH WARD

John Pollard
www.djpollard.co.uk

07967 272808

**CORNWALL COUNCILLORS
FOR HAYLE**

Contact us directly or through the Hayle One Stop Shop where we hold surgeries on the first Saturday of each month

0300 1234 100

SOUTH WARD

John Coombe

01736 752831



during the first weekend in March and attendees enjoyed a variety of inspirational speakers and the Junior Final of the Youth Speaks competition in which a team from Penpol School were representing Hayle. All nine teams gave excellent presentations and the team from Nancledra School achieved the best score in a closely fought contest. In early April members of the club will be organising a blood pressure check at the Cooperative car park with nurses in attendance to highlight 'Stroke Awareness'. The simple measurement can be done quickly and advice given can be acted upon.

Preparations are well advanced for the club's fundraising Classic Car Show and Dog Show on Saturday August 3rd at the Rugby Club. Local charities are welcome to come along and do some fundraising for themselves, free of charge.

Please contact David Jones 741348. If you would like to find out more about the work of our Rotary club, please talk to David Raymer 755029. You would receive a warm welcome if you came along to one of our meetings!

Wanted : Volunteer to help maintain small garden in Hayle. 752 528

Spring is in the air...

We all know that Spring has arrived when we hear birds singing and see them exploring the next boxes in our gardens. At Paradise Park it is much the same but



Computer Coach

**One to one support
with using and
maintaining your
computer system**

**Comptia A+ Trained
and CRB Certificate**

Phone: 07929869545

P.jacobs@talktalk.net



HAYLE DAY CARE CENTRE Commercial Road, Hayle

An affordable day care facility for the elderly of Hayle, St Ives and district

Transport • Freshly cooked meals

Also includes bathing and hairdressing
Therapy and lively social interaction

Always a friendly welcome

Call 01736 755000

P.D.H Builders & Roofing

High Quality Guaranteed Work

Contact: Paul Moyle

07989 075517 01736 719469

5a Bodriggy Street, Hayle TR27 4NB
pdhbuilders1@hotmail.co.uk

FOR ALL OF YOUR BUILDING REQUIREMENTS

some of the species are more unusual and exotic. One which many not be exotic but is certainly unusual is the **Red-billed Chough**, the fabulous Cornish crow. It disappeared from the county for several decades until three returned in 2001 (later shown to have Irish genes), then in 2002 chicks were produced on the coast of Cornwall for the first time in decades. From this small

beginning there are now five pairs around the coast of Cornwall, the offspring of these first three birds, and a pioneer population which will grow if conditions today allow. After talking to the Durrell Wildlife Conservation Trust on Jersey, Paradise Park now has a partnership with them and the Chough is the symbol of their 'Birds on the Edge' project. The aim of the project is to restore the coast for all species which share it, and where bracken growth is a particular problem as it has overwhelmed all the other plants. So far fourteen young Choughs bred at Paradise Park have gone to Jersey, and I was there for the first release in August last year. The idea is to allow the birds out from the large coastal aviary to fly free, but be supported with supplementary food and a shelter to

Lavender's blue **Garden Nursery**

Locally sown, grown and nurtured plants

1 Penpol Avenue, Hayle, TR27 4AQ

(Opposite Penpol School)

01736 754844

**A wide range of seasonal bedding plants, perennials, herbs & alpines.
Hanging baskets made to order. Free delivery in the Hayle area.**

www.lavendersbluenursery.co.uk

Open Tuesday to Sunday

T
O
Come to
BLEWETTS
TOY SHOP
 19 Penpol Terrace, Hayle
 TR27 4BQ
Y
S
 01736 753012

return to if they wish. It was an amazing experience and all worked pretty well, although the birds had some plans for themselves which involved spending time in an active quarry! You can follow their progress on the website www.birdsontheedge.org. At Paradise Park this year our aims are for the pairs we have to produce young so that we can continue to add to those in Jersey, and we would be happy to bolster the

population in Cornwall if needed. We have cameras in the Chough nests at the Park so that they



can be monitored, which means that everyone can share their progress online at www.operationchough.org.uk. The stage right now is that two of the five pairs have built the first twiggy bases, one has already moved on to adding heather and moss and is almost ready for the sheep wool and horse hair lining. If you live locally and groom your horse, we always welcome white horse hair (they prefer white!). In a few weeks time we hope to have the first chicks hatching and then will be appealing for gifts of woodlice, centipedes and ants – we have several volunteers who bring very welcome plastic tubs of these. Of course

you should definitely visit Paradise Park to meet Piran and Oggy the two hand-reared Choughs which charm visitors and often like a tickle, and regularly fly in our summer free flying bird show. Alison Hales Paradise Park

www.paradisepark.org.uk

Hayle Heritage Centre re-opening at Easter

Hayle heritage centre will be reopening to the public for Easter from the 14th of April to the 16th 11am -4pm. On Monday the 14th from 11am onwards we are running free vintage Easter crafts workshops for children and at 2.pm on Tuesday

ALL AERIALS

TV Aerial & Satellite TV Specialists.

digital

**Registered Digital
Installer**



25 Years Experience

**For all aspects of Tv Aerials,
Satellite Systems Fixed &
Motorised, Installations &
Repairs**

**Free Friendly Expert Advice By
Local Engineer.**

Tel : 01736 759225

Mobile : 07979503907


Email. jonathan@allaerials.co.uk

the 15th Kingsley Rickard will be giving a free historic guided tour around the foundry site. Over winter we have been busy working on our First World War project with our volunteer researchers uncovering some fascinating stories of bravery and courage by the people of the town. And I pleased to say that Hayle and St Erth Brownies and Hayle Royal British Legion are also now getting involved with the project, all of this work will culminate in a summer exhibition (running from the 4th -24th of August) that looks at the impact the war had on the town and its after effects. If you have any family memories or memorabilia from the First World War we would love to hear from you. We are also starting to work on our collection this year; cataloguing it and working with conservation experts to ensure that it is kept for future generations. You can see this interesting work taking place in the centre. After Easter the centre will be open on every Monday, Wednesday and Friday 11-4, you can find out more information on our website hayleheritagecentre.org.uk or you can call Laura on 01736 757683.

CHRISTIAN

SEDER MEAL

The Seder or Passover Meal is one that has been celebrated by the People of Israel, then the Jews, for several thousand years. It is held in Jewish households today round the world on 14th of the month Nisan (March-April). It



www.berwicks.co

Thinking of selling?

For a free no obligation market appraisal please call us on:

01736 759696.

A well established business with fantastic advertising coverage.

20 Foundry Square Hayle TR27 4HH

PLANTECH

THE FRIENDLY RELIABLE SERVICE

- **Lawns cut and borders weeded**
- **Hedges trimmed**
- **House, garden & building waste taken**
- **Garden clearance work**
- **Gravel, sand, topsoil delivered & laid**
- **Garage and loft clearances**
- **Free no obligation quotes**

(Tel) 01736 754401 / 07979546434



is a commemoration of the liberation of the People of Israel from slavery in Egypt held at the command of the Lord in Exodus chapter 13; so it is about remembering. The meal involves particular elements, which remind Jews of different aspects of the time immediately leading up to the Exodus from Egypt. These include the eating of certain foods and the recounting of the Passover story. 'Passover' of course comes from the last plague sent by God on Pharaoh and the Egyptians, which was the death of the first-born. The Israelites were pre-warned that the angel of death was going to pass through the land. They were bidden to smear to blood of lambs on their doorposts to identify themselves. The angel then 'passed over' their houses and struck only those first-born of the Egyptians. The Passover Meal is important for Christians, since it was the last meal Jesus shared with his disciples on the

Southern
FRUIT, VEG & DELI

Local seasonal vegetables .

Orders taken .

Fresh local flowers.

Herbs and spices.

Local Honey and eggs

Phone 757181

night he was arrested in the Garden of Gethsemane, leading to his crucifixion the following day. It was during this meal that he commanded his followers to 'love one another'. The term 'Maundy Thursday' comes from the Latin word for 'command'. It was during that Last Supper that Jesus instituted the Holy Communion or Eucharist. So Jesus was taking a ceremony, which was familiar to his disciples, and giving it a new meaning. When we celebrate

CLIFFORDS

Plumbing & Heating

Boiler Changes - Full central heating - Servicing - Landlord Certificates

Dripping taps to complete bathrooms - All plumbing work undertaken

Free quotations

Local, Reliable, Clean and friendly service

01736 755170

07761 938183



Fully Qualified, Gas safe Registered and Water Industry Approved

www.waterworkscornwall.co.uk

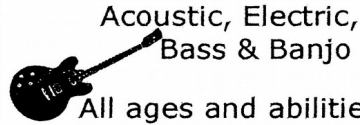
Communion we, as the Jewish people remember the liberation from Egypt, are remembering what Jesus has done for us on the cross. The priest in the service does exactly the same actions as Jesus did. This year we shall celebrate the **Seder Meal in St. Erth Parish Church on Maundy Thursday evening at 6.30 p.m.** This is a wonderful opportunity for Christians to come together for such a special occasion. It is both a solemn and a joyful time to have together. People are asked to bring a plate of vegetables and dessert. Everything else will be supplied. Just e-mail (samuelmarsden@hotmail.com) or ring (756669), so that we know how many are coming.

Walkers Are Welcome

Hayle was the first town in Cornwall to achieve Walkers are Welcome status. The benefits of WaW are to:

- be attractive destinations for walkers with top quality information on local walks
- offer local people and visitors excellent walking opportunities within their areas
- ensure that footpaths and facilities for walkers are maintained, improved and well signposted
- contribute to local tourism plans and regeneration strategies

GUITAR LESSONS



Acoustic, Electric,
Bass & Banjo

All ages and abilities
All styles folk/rock/pop

Phone 01736 753709
Mobile 07866 372715

-promote the health benefits of walking and increase participation
-encourage the use of public transport
Our current management team is unable to continue and we are seeking a few local walkers who can help to keep this important programme going.

If you would like to know more, please contact John Bennett, 753184 or jb@john-bennett.com.

LOCAL CANCER SUPPORT GROUP

Meets each Wednesday 10 - 3 in the Philip Smith Annexe of the Hayle Day Care Centre, Commercial Road, Hayle.

For laughter and tears. Day trips (wheelchairs can be used).

Good lunches.

Contact Vanessa 01209 820355

Tel: 01736 - 757818
Mob: 0779 263 2635

Nick Farrar

Property Maintenance

Windows-conservatories - Kitchens - Carpentry - Fibre Glass Flat Roofs

Knitters for Charity

A group from Hayle Day Care Centre have been knitting blankets and jumpers to support The White Cross Mission still helping orphans in Romania. The babies and children that were in the news have now grown up to teenagers but are still being cared for by the orphanages. Canon Pat Robson took donations to Romania (ours included) and reported back that they were thrilled with their gifts.



Hayle Day Care Centre 'Knitters for Charity'

Donations of hand knitted goods were also made to Mission Moldova where the people have nothing and live in extreme cold. Items are stored at Reverend Rosemary's house then collected by Christopher Quick who holds them until the next lorry goes out. The group are proud to be part of 'Knitters for Charity' and if you would like to help contact Annette phillackc@hotmail.com.

WEST CORNWALL MOBILE FOOT CLINIC

For the professional
treatment of:

Corns & Callus

Diabetics

Verrucas

Athletes Foot

Thickened Nails

Fungal Infections

Ingrowing Toe nails

Can't cut your own nails

**All in the comfort in
Your own home**



Peter Williams

S.A.C.Dip FHPT/FHPP

Tel: 01736 751752

Mob: 07901 803493

Evening and weekend calls available
pwpetewilliams@googlemail.com

Get ready for Summer in Hayle



Need to get fit, healthy and
ansum for Summer? Let our
health and beauty advertisers
show you TOWIH
(The Only Way Is Hayle)

ccc

CORNWALL CHIROPRACTIC CLINIC

— maintaining your lifestyle —

Sports Massage | Reflexology | Chiropody / Podiatry | Hypnotherapy | Nutrition
Acupuncture | Yoga & Pilates | Chiropractic Care

21 Foundry Square, Hayle, Cornwall, TR27 4HH

01736 759 088

www.cornwallclinic.co.uk

For patients who are unsure which treatment is appropriate we can offer a
FREE 15 minute consultation on request.

TJ's Barber Shop.
2 Market Square
Copperhouse Hayle

Special offer :
on Thursdays,
Gents /Boys /and
OAPs
cuts only £5.00



Tel 01736 757000

NEW AT FOUNDRY FARM, HAYLE

Natural & Organic Therapies

~ Clare Mungles ~

Holistic Massage, Hot Stone Massage
Indian Head Massage

Organic Beauty Facials
Body Brush / Scrub
Mud / Seaweed Wraps

Reflexology
Foot Pamper Treatments

clare@naturalorganictherapies.co.uk
www.naturalorganictherapies.co.uk
077897 60387

Appointment Only

West Stables, Foundry Farm, Foundry Lane
Hayle TR27 4HD

New at Foundry Farm, Hayle

THERAZE HAWKES

NAIL TECHNICIAN & HOLISTIC
THERAPIST

Manicure, Pedicure
Gel & Shellac Nails
Reflexology
Indian Head Massage

t.d.hawkes@hotmail.com

07523 414544

Appointment Only

West Stables, Foundry Farm,
Foundry Lane
Hayle TR27 4HD



**Classes at the
Passmore Edwards Institute**

Suitable for all ages and abilities

Classes run throughout the year

Mondays 7.00-8.30 pm
Tuesdays & Fridays 9.30-11.00 am

Please phone Gwyn for details on

01736 791784
or
07815945695

Millpond Update

'When Will We Ever learn?'

According to the Met Office it seems that Spring may have sprung even though it may not feel like it yet. Most of our ducks seem to agree and have started to move up to Copperhouse. Our little group of Gadwall have left Tresco en route for Iceland via the Millponds, and our black-headed gulls will shortly be going back to their nesting site in Wales. Our winter gulls will probably stay a little longer but by the end of March the Glaucous and Sabine juveniles will leave, but our Little Gull seems reluctant to go.

Picasso is also awake and was photographed sitting on the bank of the Swan Pool. It is always a relief when he finally surfaces after hibernation. The Rope Walk is dotted with pale yellow clumps of Lesser Celandine and primroses. As the season progresses the children will start their Plant Walks to see how many they can recognise throughout the year.

The Jays have paid us their annual visit. We are not sure where they come from and they don't stay long, but you can't miss them while they are there. For the majority of the wild and windy winter the ponds were in a very good state. Fast flowing water, reasonably silt-free, carried most of the rubbish to the outfall. The water flow patterns were greatly improved because the river was free of bridging material, but all this is being put in jeopardy again because of vindictive stupidity. Bamboo has already been damaged to make a bridge and rubbish thrown into the Inner Pool.

THE HOME TRADING CO.

ESSENTIAL AND ASPIRATIONAL PRODUCTS
FOR THE KITCHEN AND HOME

SELECTED SPRING OFFERS
Including garden essentials,
small hand tools and gifts

Cookware and bakeware
Preserving jars and accessories
Specialist cleaning products
DIY tools, materials, hardware,
ironmongery and key cutting

incorporating
the bean belt

freshly roasted coffee beans from
local and nationwide producers

28 PENPOL TERRACE, HAYLE, TR27 4BQ

Open Monday to Saturday 9.30 - 5.00



Fruit & Vegetables

Trade & Retail Welcome

Free Delivery



01736 757992 (24hr)



readyfresh@gmx.com



@readyfresh

North Quay, Hayle TR27 4BL

Normally the Environment Agency would have taken such items away, but somebody in their 'wisdom' has declared that the Millponds are an ornamental pond not subject to E.A. maintenance.

Unless some agreement can be reached about proper management by E.A. and the Councils, the ponds will continue to suffer from low levels and loss of good water quality until they are eventually destroyed deliberately and Hayle will lose a very important ecological and historical site. Will we never learn until it is too late to stop it happening?

Finally, will the thieving idiots who pinched our granite please bring it back? We try our best to look after the Gardens and this kind of lunacy doesn't help! **Task Lowen/Happy Easter.**

Georgina Schofield

Volunteer Wildlife Warden

Hayle Twinning Association.

We are once again looking forward to hosting guests from our twinned town of **PORDIC in Brittany France**, this will be the 17th year visitors have crossed the channel to share our Cornish hospitality. Our visitors arrive on Wednesday 28th May and depart on Saturday 31st.

We will then make our return trip also the 17th visit to PORDIC departing on Friday 22nd August and returning home on Tuesday 26th.

We are always looking to welcome

LINDSAY'S DOG GROOMING

*Dog grooming for all sizes,
breeds & coats.
Specialising in Poodles.*



For more information,
contact Lindsay on
01736 753864 or 07792 849240



Situated at *Local*
Connor Downs *collection*
in Hayle *& delivery*



**Want to play music?
You're never too old!**

**Learn music the fun way
with Graham Smith**

I'm a Registered Guitar tutor, a coach and session musician with over 30 years' experience. I believe that anyone can learn to play. I can help you to learn guitar, bass guitar and blues harmonica and to write songs and record them.

Call me on 01736 740141
(based near Penzance)

graham@musictuitioncornwall.co.uk

www.musictuitioncornwall.co.uk



*The County Shield & Ermine on
The Mairee in Pordic town.*

new members into our association so if you are willing to host and help with our fund raising then you are the person that we are looking for, you will then have the opportunity to visit PORDIC with us where you will also be hosted. Please contact our membership secretary Sue

McKenzie on 01736 850715 or the chairman Sonia Glasson on 01736 754531 for more information.

Maurice Trathen.

P G FRANKLIN

Chapel Hill, St Erth

Carpenter & General House Repairs
Garden Landscaping

NO JOB TOO SMALL

Telephone: 01736 757360

Mobile: 07778 739341

*I know a guy who's addicted to
brake fluid. He says he can stop
any time.*

W J WINN FUNERAL DIRECTORS

We are here to help you 24 hours a day

- Funeral Pre-Payment Plans • Memorials • Private Chapels of Rest

WJ WINN

Trenwith Terrace
St Ives TR26 1QE

Tel: 01736 793029

WJ WINN

69 Fore Street
Hayle TR27 4DX

Tel: 01736 752124

CHARLES BRYANT

North Road, Goldsithney,
Cornwall TR20 9JY

Tel: 01736 710318

MARAZION FUNERAL SERVICE

Back Lane, Marazion, Cornwall TR17 0HE

Tel: 01736 710318



Part of Dignity plc. A British Company.



Safer Access to Hayle Station

A joint £811,000 scheme aimed at improving the access of Hayle station has been unveiled by Network Rail, First Great Western, Cornwall Council and Sustrans. Central to this scheme is the provision of a safer alternative north-south link for both passengers and the community via the existing underpass and footbridge respectively. The new link will also replace an existing footpath crossing – Hayle level crossing - which will eventually be closed when the new scheme completes.

As part of this improvement, works will be carried out to:

- Turn the disused Harbour Branch railway line into a footpath and cycleway
- Build new access to the south west of the station car park
- Build new access with ramp to rear of platform 2 to link the underpass to platform 2
- Provide bike hoops to the rear of platform 2
- Resurface the footbridge bridge to the north east of the station and improve the lighting. Improve signage with line markings to denote accessible route from car park to underpass
- New lightings at all the access

HANDYMAN EXPERIENCED & RELIABLE

“NO JOB TOO SMALL”

**Completing all those jobs
you've been meaning to do!**

**Painting / Decorating
Repairs / Flat-pack Assembly
Fencing / Sheds**

**CONTACT
RICK HARVEY
01736 752811**



Shoreside Accountancy

Bookkeeping, VAT and Payroll Services

Mob: 07771866642

Tel: 01736751751

costa@shoresideaccountancy.co.uk

www.shoresideaccountancy.co.uk

We specialise in providing affordable bookkeeping and payroll services for small businesses and sole traders.

We are focused on providing high-quality service with great customer satisfaction.

Call today for a free, no obligation meeting to discuss your requirements.



**THE INSTITUTE
OF CERTIFIED
BOOKKEEPERS**
PRACTICE LICENCE No.13530

Shoreside Accountancy is a licensed practice with The Institute of Certified Bookkeepers

points, including the underpass and footpath adjacent to Station Hill Works are set to start by February and are projected to complete by May



David N'jie
PAINTER & DECORATOR

07944 156995 01209 831397

dn-jiepainter-decorator@hotmail.com
Trethannas Cottage, Praze-an-Beeble
Camborne TR14 0LH



Hayle's VIP Club.

The Hayle VIP club is one of many social clubs around Cornwall that is run by Cornwall Blind Association volunteers, for the visually impaired, and provides a very important social lifeline for the people who attend. The club meets twice a month on Friday mornings at the Hayle Day Centre on Commercial Road and members are treated to a talk (or other form of entertainment) followed by a hot lunch. Barbara, the club organiser would love to get a few more volunteers involved so if you could spare some time twice a month to help run this very friendly and successful club, or just be a "stand-by" helper for when other volunteers are away, then we would be delighted to hear from you. Full training and support will be given. For an informal chat to find out a bit more, please call Sally White at Cornwall Blind Association on 01872 266710.

'Father of the Railway'

The National Railway Museum in York 'NRM' boasts a copy of Richard Trevithick statue taken from the original bronze one in Camborne. The difference is the NRM copy

Hayle Harbour Users Group will change the time of their monthly meeting from the first Monday of the month to the second Thursday of the month. Meetings will still commence at 7:30pm at the Royal Standard. New members are, as always, welcome to join. Mr Jan Ziolo.

1ST CHOICE PAVING

Drives, Paths, Patios, Landscaping.



01736 753087 07969 960128
www.1stchoicepaving.com
Clifton Terrace, Hayle.

proudly states Richard Trevithick **Father of the Railway**, a fact we seem to have missed here, plus of course the part Harvey's of Hayle played in building his early machines. It therefore seemed appropriate to set forth on an expedition up north to see the results of Trevithick's pioneering efforts and visit the gathering of all the existing 'Mallards' (Gresley A4 Pacific's) which of course included the famous



record breaker itself. The NRM assembled all the surviving A4's at the museum in York to commemorate the 75th anniversary of Mallard's world record run (126mph). In 2013 'Mallard 75' at York saw the gathering of the six A4's including one each from the USA and Canada, but the finale was the 'Mallard farewell' which was held at the NRM northern outpost at Shildon 15-23 Feb. All six engines were to be lined up for the last time (3 in steam) before dispersing back to their homes. Was a 1000 mile round trip really worth it! Ok for the 'anoraks' you may say! not a bit of it, as 120,000 people including families with hordes of youngsters thronged

Transformations Cornwall

*Give your home a luxurious finish
Create the style you desire*

*Bespoke curtains, blinds and soft
furnishings*

Handmade to a high standard

Professional, friendly service

*Elizabeth Gregg
17 Penpol Road Hayle
TR27 4AD*

*elizabeth@transformationscornwall
co.uk*

*www.facebook.com/
TransformationsCornwall*

PIANO LESSONS IN HAYLE

Peter luing (ex- head of music Hayle Community School) has now moved back into Hayle and can offer piano lessons on a Bechstein 6 ft grand, or a Zimmerman upright in his detached studio at 21 Gwel Trencrom, TR27 6PJ.

A graduate of the Royal Academy of Music, he can also offer theory and composition lessons.

The studio is also available for hire for practising.

Details on www.peterluing.co.uk

Or ring 01736 754225



HARVEY

THE HOLIDAY COACH NEAR THE COAST



LARGE FULLY ENCLOSED GARDEN
TRAIN VIEWING DECK
SWINGS AND PLAYHOUSE
COVERED CYCLE STORE

WWW.RAILHOLIDAY.CO.UK
01503 230783

PHILIPS

HOME IMPROVEMENTS

FOR ALL YOUR BUILDING
AND RENOVATION WORKS
UNDER ONE ROOF.

LOCAL FIRST CLASS TRADES
FROM FLATPACKS TO
EXTENSIONS.

Mobile 07857 607697

Office 01736 752125

bbcurren@btinternet.com

in to soak up the 8 day event and marvel at our heritage in action; Trevithick would have loved to see all those people celebrating his finest hour of **high pressure steam**.

The return trip suddenly 'diverted' to the NRM at York which presented the 'City of Truro' centre stage on the giant turntable and the RT statue proudly keeping a eye on it all, with his title **Father of the railway** prominently on view. Ray Wyse and myself considered it a privilege to be able to view the finest examples of our steam heritage and believe Hayle still has a need for its 'Pioneerium Centre' to celebrate our part in the worlds use of high pressure steam and also its part in putting the 'power' into the Rolls Merlin engine when it was most needed.

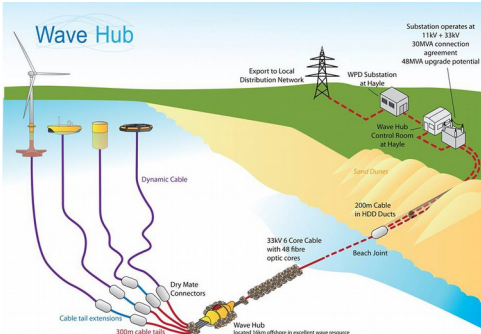
Peter Channon

*We had a power cut last week and my PC, TV, I-box I-pad, I-pod, I-phone and games console shut down immediately, it was raining- I couldn't play golf so I talked to my wife for a few hours. She seems like a **really** nice person.*

(Barry Thomas)

Did you know the Hayle Foodbank helped 14.6% more people in 2013 than it did in 2012. Since its opening two years previously, the Foodbank has helped 2,640 people, which equates to serving 55,545 meals.

Finnish 'Penguin'



Finnish multi-national utilities firm Fortum has signed an agreement to secure a berth at Wave Hub, the offshore renewable energy test facility in Cornwall. The leasing agreement gives Fortum the opportunity to deploy an array of advanced full scale wave power converters in real sea conditions at one of Wave Hub's four berths. Fortum is a leading energy

Daisy Potter Vintage Clothes

Vintage designer clothes
Jewellery
Accessories
Collectables



Unit 7-8 Foundry Shopping Village
Hayle, Cornwall, TR27 4AB
01736 754836

Facebook: Daisy Potter Vintage Clothes

company focusing on the Nordic countries, Russia and the Baltic Rim area, with annual sales of EUR 6 billion and employing some 10,000 people. The company has been actively involved in wave energy development since 2007.

Heli Antila, Chief Technical Officer at Fortum, said: "The Wave Hub facility offers a unique opportunity to do this. As the site is consented, constructed

TJ'S CARPETS LTD.



**New Showroom at Tolroy Garage,
58 Mellanear Road, Hayle TR27 6HF**

Come and see our wide selection of carpets & vinyls,
laminates and patterns

Our famous home selection service still available

Full range of flooring accessories

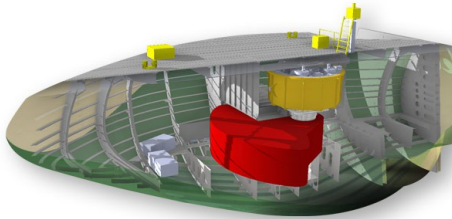
Call Now! 01736 757540 or 07976 608215

Free measuring & estimate service

"Before You Buy, Give Us A Try"

and grid connected this significantly reduces the time it takes to get devices into the water. This is as much as plug and play as it will get when it comes to power generation. "From the very beginning, Wave Hub has been very supportive of our project development which is important as this is a testing environment. One wave power solution that we are evaluating to be deployed at the site is 'the Penguin', developed by Finnish wave power company Wello."

2014 before building out to a full scale grid-connected array in 2015.



A Wello Penguin

The announcement by Fortum follows the news in December that leading UK-based wave energy company Seatricity is to develop a 10MW array over the next two years at Wave Hub. Seatricity plans to deploy its second generation device at Wave Hub during

MUSIC LESSONS

Piano, keyboard, organ, singing and theory of music

♪ Beginners to diploma level

♪ Adults and children

♪ Examinations or fun!

♪ No group tuition whatsoever — strictly "one to one" basis

NEIL SHEPHERD

Details 01736 759944

www.neilshepherd.org.uk

Hayle Community

Consultation Forum

This is a very grandiose title for a meeting, which it is hoped will have some practical outcomes for the people of Hayle. In view of the cuts, which are being foreshadowed by Cornwall

Glanville Nurseries

Bedding plants 6 packs £1.80 Pot plants from £1.00.

Hanging baskets refilled 14" £14.00. 16" £16.00

New baskets ordered & ready to hang 14" £17.00 16" £19.00.

Orders over £20 free delivery locally

Strawberry Lane Hayle Cornwall TR27 5JS

Ph 01736 754730 07825651533

Council to the services they provide, this meeting will seek to establish how best to meet the shortfall from resources, which exist within the community. It is hoped that by some strategic planning the cuts already planned - as well as future cuts - will have a minimal effect on individual lives and the life of our community as a whole. At present a list of organisations is being drawn up and research is being done into just how the cuts to Cornwall Council's budget will impact on us locally. The Forum will take place in May (details below). A letter of invitation will go out towards the end of April to as many organisations we can think of, including schools, health services, churches, sports clubs, service clubs and voluntary organisations. In case we have omitted any in our list of invitations, each organisation in the town may express an interest in sending a representative to the Forum by e-mailing Samuel Marsden at samuelmarsden@hotmail.com.

It is amazing what can be achieved, when Community works together

Monday, 12 May 7.30 pm

**Venue: Hayle Town Council offices
Room 7**

Forget me not's

Sally Shearer lives in Hayle and is setting up a new business, Forget Me Not's selling new, ex-demo, pre-loved and vintage wedding and prom dresses, shoes, tiaras. etc.

Sally's business is called FORGET ME NOT'S and she is showcasing her collection at Hayle Day Care Centre, Commercial Road on Saturday 26 April 11am – 3pm.

HELPING HANDS

Experienced, kind, reliable
Home Help/Carer.

Jobs I can assist you with include shopping, personal care, household duties, dog walking, collection of prescriptions or simply be a companion to chat to over a cup of tea.

CRB checked and references provided. Good hourly rate.

Please call for an informal chat

0774 0139333
01736 751751

MUSURA 
CHARTERED BUILDING SURVEYOR AND BUILDING DESIGN

Residential Building Surveys

Design Planning and Building Regulation

Schedules of Condition

Party Wall Advice

Professional Consultants Certificates

Scott Matthews Dip Surv MRICS

Chartered Building Surveyor

Contact 07834 538994

www.musura.com

email: scott@musura.com





Council Corner

April/May 2014

Beach Access Improvement Scheme :

It is anticipated that by the time you are reading this the beach access project will be complete and open to the public. The access slope is located in front of the Bluff Inn and runs behind the RNLI lifeguard hut on Riviere Towans and is constructed of concrete. The support of the land and business owners in the vicinity has been instrumental in getting the project to this stage. An official opening ceremony will be taking place shortly and all involved in bringing the project to fruition will be invited to mark the occasion.

Development of South Quay

Work is continuing on South Quay.

The Council is receiving regular updates from the builders contracted to build the Asda Superstore, which is still on schedule to be open in Autumn 2014. The developers are at the stage where the materials that will form the exterior of the store are being carefully selected.

Swimming Pool Supporters

Following on from last year's success, it has been agreed that once again we will be inviting willing volunteers to assist in preparing the pool for the forthcoming season. A number of Friends of the Pool, Town Councillors and keen supporters kindly gave their time and energy and got the pool ready for what turned out to be the busiest season in many, many years last year. It is planned that each Saturday throughout May and June the doors will be open and volunteers can come and lend their skills.

JC ELECTRICAL

Your complete 24 hour Electrical Service

**Rewires • New Build • Lighting •
Showers • Extra Sockets • Heating**

City & Guilds Qualified (Tests to BS7671)

Part P registered

Prompt and reliable friendly service

Free estimates and all work guaranteed

Office: 01736 754543

Mobile: 07739 577549



Keep an eye out for updates:
facebook.com/HayleSwimmingPool.
**Hayle Community Centre and Frank
Johns Centre**

If you are planning on holding any meetings, events, classes, parties or looking for regular office space these may be the venues for you! Space is available for regular sessions or one off bookings. Remember that the CAB, Link into Learning and others hold regular sessions and surgeries. Contact the Town Clerk for details of services and available space.

**Annual Citizens and
Organizations of the Year**

You are reminded again that Nomination packs are available from the Town Clerk's office and the Library. The Council is also seeking nominations for Hayle Young Person of the Year and Hayle Youth Organization of the Year. The deadline for all nominations will be Thursday 17 April 2014.

Forthcoming Calendar Dates

The Annual Elector's or Town Meeting will be held on Thursday 17 April at 7p.m. at Hayle Community Centre. During this meeting the Mayor presents the Annual Report and it is an opportunity for members of the public to quiz Councillors on any of the Council's activities. The Annual Council Meeting and Mayor Making Ceremony will take place on Thursday 8 May at Hayle Day Care Centre. During this meeting awards will be presented to this year's Citizens and Organisations of the Year.

Hayle Town Council
Tel: 01736 755 005

townclerk@hayletowncouncil.net
www.hayletowncouncil.net

PAUL SHERRIS

Hayle's only
local family owned
**FUNERAL
DIRECTOR**
Private Chapel of Rest
Pre-Payment Plans
available
West Terrace, Hayle.
TR27 4JS.
01736 753969
Day or night

YOUR OLD TAPES ONTO CD



**YOUR OLD CASSETTE,
REEL TO REEL TAPES,
OR 33/45/78 RPM RECORDS
ALL SAFELY TRANSFERRED
ONTO CD.**

Your precious memories saved forever.
Your own photos, information and dedications
can be included on the CD/DVD cover.

**Also now : old VHS video tapes
and Photos all onto DVD.**

Digital Recording for Singers and Musicians
Songwriters, Poets, Story Tellers, etc.
Also Musical Backing Tracks provided etc.

Contact: Steve Nunn. Telephone 01209 719481
www.cornmillstudio.co.uk
Email: cornmillstudio@aol.com

Hidden Words Quiz 114

By Cleverclogs

*This time we're looking for **surnames of male film stars**.*

*Eg: Some gardeners are always cutting their grass but I like to keep **PIT Tall**. = **PITT***

1. There's no way, never in a million years will he do that!
2. Bob ran down to the beach for an early swim before breakfast.
3. No one believed it when she entered the slimming competition.
4. If you want a holiday, there's a fantastic agency in the high street.
5. After the storms, I wouldn't go near the cliffs, there' danger

everywhere.

6. We were on the quay, leisurely walking in the sunshine. storms? What storms?
7. If it's space you want, this is a very large house. It's ideal for you.
8. When were all our clothes last aired? It's time to give them a good shake out in the sun.
9. Rub some oil into my cricket bat, there's a good chap! Linseed oil is on the window ledge.
10. My spaniel senses immediately if someone likes him. His tail starts to wag.
11. They're a funny couple - one's tall, one's short. They are the best of

St Erth & Hayle Cars



**4 - 8 - 16 Seat Vehicles.
8 Seat Party Buses.
Polite, Friendly Staff.**

**Local Trips
Sea & Airport Transfers
Tours & Much more!**

01736 754000 or 01736 754040

**www.sterthandhaylecars.co.uk
info@sterthandhaylecars.co.uk**

mates.

12. I'm afraid the south westerlies are very prevalent in our neck of the woods.

13. I'll forget it over the weekend, I shall tackle the problem Monday when I'm fresh.

14. Hello, Michael - I haven't seen you for ages. Where have you been?

15. When they both open their male and female hair salon I think they will do very well indeed.

To win a prize voucher worth £20 to be spent with any of our advertisers send your answers along with your contact details to editor@haylepump.org

or

drop them into
**Passmore Edwards Institute ,
Bean Belt or Gallery Cafe.**

Closing date May 13 2014

Answers to quiz 113

- 1)bricks 2)stone 3)cement
4)steel 5)wood 6)sand 7)
mortar 8)guttering 9)felt
10)slate 11)tiles 12)glass
13)pipes 14)lead 15)lintel.

**The Winner who receives a £20
voucher to spend with one of our
advertisers is:**

Sue Binns of Ventonleague

M J MARINE ELECTRONICS

For all your marine electronic
installation supplies repairs
and service

Agents for Furuno
Standard Horizon Icom
Simrad & Lowrance

**Unit 4 Albert Pier
Penzance TR18 2LL**

**01736 330200
07971 281 888**

FURUNO



SIMRAD

ICOM

LOWRANCE

**Join us on board Penzance's finest angling boat
01736 330200 or 07971 281 888
www.penzanceboatfishing.co.uk**



Letters to the Editor

Dear Sir, Allow me to introduce myself, I'm John, together with my wife Jan (and usually a dog or two), we have been holidaying in Hayle for 10 years or so.... originally we found an apartment up on the Towans that would let us bring a dog... (Hamish the Westie, you would have all loved him, sadly no longer with us) then a few years in a chalet on the Towans, but now you will find us in an apartment on Penpol Terrace every September, which the owner pre books for us without us even asking! Fantastic! Let me say this from the start... We love your town, we really do. All year we talk about coming, we can't wait to get to Hayle, breakfast at Johnny's, evenings at Salt, the Bucket of Blood, and meals at the fantastic choice of restaurants and takeaways you have. As you are all aware your sands, harbour and estuary are amazing, I hope you appreciate them as much as we do... we come from a big city where treasures such as these are not readily available, and to have them, for just a week is incredible. Every shop, pub, restaurant, takeaway, and person is always welcoming to a fault. (More gushing)... I wax lyrical about your town to all that will listen, and hopefully I do a little to help your tourist economy.. Hopefully the Hayle Pump editor will let me contribute to future editions, as I would enjoy telling you all how this year's holiday went, which I'm sure will be as enjoyable as the past ones have.

best wishes.
John

Feeding Frenzy

Dear Editor,

To these residents of Hayle, it looks as if our town is beset by building developers enjoying some kind of feeding frenzy. It is difficult to see how it is going to be possible to accommodate all the extra road traffic associated with all these plans, the two lane road through Hayle is already overloaded, especially during holiday season. The signatories to the petition enclosed object to the Linden Homes plans to build homes on the slopes of hills overlooking Tremeadow and Tolview Terrace which are built on an ancient riverbed. The sea is less than 500 yards away and already the drains back up at Spring Tide. Run off from the proposed site is of great concern and there does not appear to be any thought given to the topography of the site and the wisdom of building on hills overlooking a known flood area. Furthermore this is agricultural land, a greenfield site and the Environment Agency states ' if the local community objects to a development the development cannot happen.'

This community does object and I enclose a petition signed by all the residents of Tremeadow and Tolview Terrace. We ask Hayle Town Council to throw out this proposal and by doing so demonstrate its concern for the people of Hayle.

P Morrell.

(Please note this letter has been edited for space and a signed residents petition was enclosed.)

Serious blockages

During the recent very stormy weather, I became aware of serious blockages in my roof guttering. Thanks to the pages of the Pump, I was able to enlist the services of one of your advertisers, Alexander McDonald. Alexander quickly and speedily solved the problem, and also gave the fascia boards a much-needed clean. The fee was very reasonable, and I would thoroughly recommend Alexander to anyone else with similar problems.
Goudie Charles, Hayle

Proper Job.

Dear Sir, I needed some work done on a patio area and saw an advertisement in your newsletter for

1st Choice Paving. I would recommend this company for their excellent work, they turned up on time, finished when they said they would, and left the area clean and tidy and 100% better than before. It really was a "proper job".
S.T Hayle

Guide Dogs are looking for a volunteer with a car to help a guide dog owner free run a 2 year old guide dog living in Hayle. He is a young fit active dog who is easy to handle and sociable with other dogs. If you can help contact the Dog Care and Welfare Advisor on 07919 044990



Webb & Philp Ltd
electrical contractors



17th edition
BS7671

All aspects of Electrical work undertaken

Free Estimates, No Job Too Small
Prompt, Reliable, Fully Qualified, Est. 1972

www.webbandphilp.co.uk

Telephone/Facsimile 01736 753651 Mobile: 07419 376882

email: electricians@webbandphilp.co.uk

- ✓ Re-Wires
- ✓ Security
- ✓ Showers
- ✓ New Build
- ✓ Testing
- ✓ Maintenance
- ✓ PAT Testing
- ✓ Extra Sockets & Lights

Churches Together Easter Services

Maundy Thursday

Seder meal with Eucharist
6.30pm at St Erth

Good Friday

St Elwyns. Good Friday Liturgy
10.00am followed by Walk of
Witness to Phillack for Meditation
from 12noon, followed by Hot
Cross Buns and a hot drink.

Easter Sunday

6.30am Dawn Service at the
Towans followed by breakfast at
Phillack Church Hall
8.00am at St Erth
Eucharists in all churches at the
usual main morning service time.
6.00pm Eucharist at Gwinear

Salvation Army

Good Friday 10.30am
Easter Sunday 11.00am

Light and Life Church

Good Friday 10.30am
Easter Sunday 10.30am

St Joseph's R.C.Church Ventonleague, Angarrack

Easter Sunday 11.00am

Methodist Church

Easter Sunday 10.45am

CLUB LISTINGS

Hayle in Bloom. Last Monday of the
month, except for Aug & Dec. Held at
Hayle Rugby Club 7pm.

www.hayleinbloom.org.uk

Hayle Community Archive.

Open Tuesday & Thursday 10 a.m. –
1p.m.:Tel 01736 753962, email:

haylearnive@haylearnive.org.uk

Facebook: Hayle Community
Archive.Twitter:@hayle archive

Hayle Darby and Joan Club.

Fortnightly on Fridays at 2:30 pm.
Methodist Church Hall. Tel 01736
711134

Hayle & District Bowling Club.

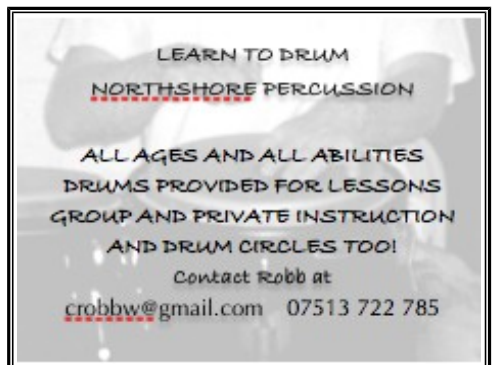
10am every Sunday. Short Mat bowling
indoors during winter 01736 753565
St Ives and Hayle Community Choir.
Tuesdays, 2pm St Anta Church Hall,
Carbis Bay. All welcome

Hayle Film Club. Films shown on the
2nd Saturday of every month at 7.30
p.m. at The Passmore Edwards Institute.
Ph Donna 01736 753184. Check on
www.haylefilmclub.org.uk

Hayle Flower Club. 4th Wednesday of
the month 7.30pm, Hayle Daycare
Centre in the conservatory Tel: 01736
793338

Hayle Harbour Users Association.

First Monday of each month, 7.30pm,



LEARN TO DRUM
NORTHSHORE PERCUSSION
ALL AGES AND ALL ABILITIES
DRUMS PROVIDED FOR LESSONS
GROUP AND PRIVATE INSTRUCTION
AND DRUM CIRCLES TOO!
Contact Robb at
crobbsw@gmail.com 07513 722 785

Royal Standard Pub. R.Lello 01736 757632 .

Hayle Judo Kwai. Meeting at The Downes, Foundry Hill,.Tues & Thurs. Sensei Richard 01736 740723 Lucy Alldritt, sec. 07581490714

Hayle Library Reading Group. 2.00pm first Wednesday of each month. Free. Contact Hayle Library.

Hayle Line Dancing Club. Every Mon. at Hayle Methodist Church 7.30–9.30pm Adults £3, Children £1 (includes light refreshment). Car parking available. Tel 01736 752610.

Hayle & District Lions Club. 2nd and 4th Tuesday of every month, 7.30pm at Passmore Edwards Institute. Tel. Mel George 01736 756484

Hayle Model Boat Club. Wednesday evenings 7-9pm & Sunday mornings 10-12 noon, meeting at green chalet by Hayle outdoor swimming pool. Tel: 01736 755516, or Les on 01736 754254

Hayle Meanderers Every Wed.10.30am Commercial Road car park. Free, + contribution to carshare. Tel Joan Smith 01736 793631

Hayle Old Cornwall Society. First Friday of each month. Oct. to May. Passmore Edwards Institute,7.30pm. . Maria Prosser, 01736-755072

Hayle Pilot Gig Rowing Club. Rowing out of Hayle Harbour most Tuesdays and Thursday evenings Tel. 01736 754254 www.haylegigcluc.com

Hayle Local Vocalz - a 65 strong mixed voice adult choir. Mondays, 8pm, St Elwyn's Church, Hayle. 07950 585787

Praze Hayle Choir. Every Tues.7.30pm. Methodist Hall Don Metcalf 01736 757720

Matthew Blackmore

Plumbing & Heating Services

Central heating installations, maintenance and repairs.

Bathrooms & wet-rooms etc.

Gas Safe registered. Free estimates.

Call 07873418280

www.matthew-blackmore.co.uk

Hayle Model Railway Club & Duchy Railroaders Club Rooms Unit 5, Praze Business Park, Praze-an-Beeble. Mon. & Thurs. 7pm – 9.30pm. Bob Mims 01736 757910 bobmims@live.co.uk

Hayle Rotary Club. Monday 7 pm except Bank Holidays White Hart Hotel, David Raymer 01736 755029 or Trevor Osborne 01736 793596

The Rotary Club of St Ives Bay New Rotary Club for men & women meeting on Tuesdays at the Carbis Bay Hotel 6.30 for 6.45pm. Contact: secretary@stivesbayrotary.co.uk

Hayle RNLI meets Mar to Nov at 7.30pm 2nd WED of the month at Unit 5, Hayle Ind Park. Tel: 01736 753567

Save our Sand. 2nd Tuesday of each month, 7.30pm at the Passmore Edwards Institute. Hayle

Heyl St Piran Singers. Every Thursday at Hayle Methodist Church Hall at 7.30 to 9.30pm. Ann Birch 01736 752335

Royal British Legion. Passmore Edwards Institute. Every Mon. Wed.& Fri evening, and Sat.afternoon. Tel:07743276412 Mr. John Bawden.

St Erth Concert Band Rehearsals Tues 7.30 to 9.30pm in Methodist Church Hall G.Lawry 01736 755512 www.sterthconcertband.co.uk

Keeping Fit Can Be Fun!!

**Mon 10 am Circuit
training for over 50s**

**Thur 10am Extend
Movement to music over
60s at the Passmore
Edwards Institute**

**Wed 2pm at
Leedstown Village
Hall**

**Start the week feeling
good!**

Sylvia 01736 757560



St Erth Friendship Club for the over 60s. Tuesdays 2pm – 4pm St Erth School Hall £1.50 per session. 01736 850758

Hayle Surf Life Saving Club
Riviere Towans Hayle TR27 5AF
Captain: Dave Parker 755303

Table Tennis for Fun, every Friday at 2pm at Hayle Methodist Church Hall, Chapel Hill, Hayle. Only £2 per session. Bats, balls and squash provided. John Nunn 01736 759686

Heyl Town Band. Rehearsals Tuesdays & Thursdays 7:30pm – 9:30pm, Junior band rehearsals Thursdays 6:pm – 7:00pm

Hayle Twinning Association. 2nd Mon. of each month at Hayle Community Centre. 7.15pm in Room 7. Mike Stuckey 01736 753755,

Hayle Penwith U3A Hayle Day Care Centre Social meetings 2nd & 3rd Thurs. 2pm. Art, History, Writing, Play reading, Current Affairs, Luncheon Club.

Chairman Mel George 756484 Secretary Tess Hulland 759658

W.I. Hayle 1st Tues.of the month, 7.30pm, Hayle Daycare Centre
Tel. 01736 754089

Phillack Church Hall. Bingo: 1st Friday, 7.pm. Church Lunch: 2nd Saturday 12.15 Quiz : last Saturday, 7.30 p.m. Phillack Parish Church 9.15 am services every Sunday (except 5th) preceded by beautiful bellringing.

Laudate Chamber Choir- a 40 strong church/cathedral style chamber choir Tuesdays 8pm, St Elwyn's Church, Hayle: Tel 07950 585787

St Ives and Hayle Community Choir Tuesdays 2pm to 3.30pm at St Anta Church Hall, Carbis Bay 07950 585787

To appear on this page free of charge drop in details to :

Passmore Edwards Institute

or Bean Belt

28 Penpol Terrace, Hayle.

Or email editor@haylepump.org.uk

The Hayle Pump can be viewed and downloaded at www.haylepump.org.uk

Subscriptions

For 6 issues by mail order please send a cheque or postal order for £3.50 made payable to Hayle Pump Newsletter

**Hayle Pump
35 Penpol Terrace, Hayle,
TR27 4BQ**

ADVERTISERS INDEX

- 28 1st Choice paving
- 17 All Aerials
- 12 A McDonald
- **04 Angove Sports**
- 06 Barton Print
- **24 Bean Belt**
- 18 Berwick Estate Agents
- 03 Biz & Bytes
- 17 Blewetts
- 2 Café Riviere
- 19 Cliffords Plumbing
- 15 C omputer Coach
- 35 Cornmill Studios
- 16 Cornwall Chiropractic
- 5 Country Skittles
- 14 County Councillors
- 7 C Spray Bath Renovations
- 31 Daisy Potter
- 28 David N'jie Decorator
- 12 Des Button Electrician
- 3 Farm Shop
- 44 Flowertime
- 19 Foundry Fruit n Veg
- 9 Gallery Coffee Bar & Gifts
- 32 Glanville Plants
- 25 Graham Smith Music Tutor
- 20 Guitar Lessons
- 23 Gwyns Yoga
- 30 Harvey Rail
- 3 Hayle Cycles
- 15 Hayle Day Care
- 33 Helping Hands
- 34 J.C. Electricals
- 11 Kernow Car Valeting
- 14 Kleeneze
- 23 Ladies Room
- 25 Lindsay's Dog Grooming
- 38 Marine Electronics
- 41 Matthew Blackmore
- 9 Meritorius
- 21 Mobile Foot Clinic
- 33 Musura
- 22 Natural Organics
- 20 Nick Farrar Windows
- 40 North Shore
- 10 Paradise Park
- **7 Passmore Edwards**

- 35 Paul Sherris Funeral Service
- 16 P.D.H. Builders & Roofing
- 29 Peter Luing Piano Lessons
- 26 P G Franklin
- 30 Philips Home
- 8 Philips Pasties
- 18 Plantech
- 24 Readyfresh
- 27 Rick Harvey Handyman
- 27 Shoreside Accountancy
- 6 Sleepy Hollow
- 36 St Erth Cars
- 4 Sue Seabury
- 42 Sylvia keep fit
- 13 T Cee Tech
- 31 TJ Carpets
- 23 Theraze Nails
- 12 TP Wills
- 29 Transformations
- 39 Webb & Philp Electrical
- 26 W J Wiinn Funeral Director

Send your adverts to
ads@haylepump.org.uk

Display Advertising Costs

1/8	63 x 47.5	£10
1/4	63 x 95	£15
1/2	130 x 95	£30
Full	190 x 130	£90

Send any copy to:
editor@haylepump.org.uk

or

Drop your articles into
Angove Sports
Bean Belt

Passmore Edwards Institute

NEXT DEADLINE IS
13th of May 2014

FlowerTime

on Penpol Terrace, TR27 4BQ

**100's of
Gifts ideas
Greeting Cards
Candles**

**Flowers & Plants
Hand-Made in Cornwall**

**Soaps
Chocolates
Jewellery
& lots more**

01736 757006

www.wesendflowers.co.uk