

# **HAYLE PUMP NEWSLETTER**

## *Hayle's 'Lido bit of paradise'*



*Win a cream tea for 2 see Page 13*

Thanks to our volunteers and advertisers

Free Copy

Circulation 2500

# Hayle Pump Newsletter

Passmore Edwards Institute, 13-15 Hayle Terrace TR27 4BU

The Pump is produced by volunteers as a community newsletter.

**NB** *All articles accepted are not necessarily the view of the editorial team.*

View online at [www.haylepump.org.uk](http://www.haylepump.org.uk)

**Editor** Rich Morgan

[editor@haylepump.org.uk](mailto:editor@haylepump.org.uk)

**Treasurer** Sarah Turk

[treasurer@haylepump.org.uk](mailto:treasurer@haylepump.org.uk)

**Advertising** Sarah & Jeff Turk

[ads@haylepump.org.uk](mailto:ads@haylepump.org.uk)

Phone 01736 752319

**Web site** John Bennett

[webmaster@haylepump.org.uk](mailto:webmaster@haylepump.org.uk)

**Desk Top Publishing**

Jeff Turk, Rich Morgan

**Delivery** Samuel Marsden

## Subscriptions

For 6 issues by post, please send a cheque or postal order for £ 3.50 made out to Hayle Pump Newsletter to:

Hayle Pump Subscriptions  
35 Penpol Terrace  
Hayle Tr27 4BQ

Please give *your* name as well as delivery name and address

**Send any articles or copy to:**

[editor@haylepump.org.uk](mailto:editor@haylepump.org.uk)

**Send your adverts to**  
[ads@haylepump.org.uk](mailto:ads@haylepump.org.uk)  
**or drop off points**

or drop off at  
Angove Sports  
Bean Belt  
Passmore Edwards Institute

Display Advertising Costs		
<b>1/8</b>	63 x 47.5	<b>£10</b>
<b>1/4</b>	63 x 95	<b>£15</b>
<b>1/2</b>	130 x 95	<b>£30</b>
<b>Full</b>	190 x 130	<b>£90</b>

**NEXT DEADLINE is**  
**13<sup>th</sup> SEPTEMBER**

*The pump is run by volunteers and relies on our advertisers and your input. If you would like to help in any way, please contact the editor or one of the team*

## 1ST CHOICE PAVING

Drives, Paths, Patios, Landscaping.



01736 753087 07969 960128

[www.1stchoicepaving.com](http://www.1stchoicepaving.com)

Clifton Terrace, Hayle.

# Hayle Outdoor

## Swimming Pool

The swimming pool is open NOW until September 7. It is open every day from 11am-6pm, reasonable weather permitting. The entire complex has been freshly painted and spruced up by a team of volunteers, Hayle in Bloom have worked their magic in the Garden, and the pool water temperature in June reached 24 degrees C. The entry charge has remained unchanged for the third consecutive year, what better reason to come down and take a look, relax in the garden, or enjoy a refreshing swim? The friendly team of lifeguards and staff at the on-site Café Riviere will be pleased to welcome you. **Tuesdays remain free swim days** for locals (Tuesday passes available from the Post Office, bring a passport photo and a utility bill). If you are a pool user, or if you just want this lovely pool to continue, please help us to get funding for further improvements by completing a Pool Survey form available from the Pool Office. You can also make a

donation to "Help for Heroes" at the Office. For more information pop into the Pool Office, or phone the pool direct on 01736 752568. You can also visit the website:  
hayleswimmingpoolfriends.org.uk

### Heidi Bows BSc AAT MIP Accountancy & Book Keeping Services

Fully licensed, regulated & insured.  
Year end accounts. Self assessment tax returns. Book keeping services. Good rates and fixed prices. Collection & Delivery service.  
01736 756322 07799367197

### Foundry Day 20th September 2014 Chapel Terrace, Hayle 10 am to 4 pm

Foundry day is a celebration of Hayle Heritage, Local Business, Local Talent and sustainability in the Community

- If you have a skill or run a cottage industry from home or just make things to sell for charity,
- or
- Do you sing or perform in a group or band, if so the organisers would like to hear from you.

•  
**For more information contact:**  
**Chris and Maureen Roantree**  
sirc1@btinternet.com  
Tel: 01736 753133  
**Nick Farrar**  
nickfarrar.windows@gmail.com -  
Tel: 07792 632635

T	Come to	O
<b>BLEWETTS</b>		
TOY SHOP		
19 Penpol Terrace, Hayle		
TR27 4BQ		
Y	01736 753012	S

# St Michael's Hospital

As you are probably aware by now, St Michael's Hospital in Hayle is once again under threat, after an independent report has said it is at risk of closure. Despite an ageing population, Cornwall Council has less money to spend on greater numbers of older people. Once our hospital closes, that's it – we will all have to go to Treliske in Truro, like it or not. Over 30,000 of us marched in support of St. Michael's in 2006, the last time it was being proposed for closure. Don't stand by and watch this happen – write to your M.P., sign petitions, make your voice heard somehow. If all else fails, we can all get out our walking boots again.

\*



**Council  
Corner.**

## *August/September 2014*

### Office Opening Hours and Meetings

In the month of August the Council traditionally goes into recess with meetings and business postponed until September. During the recess period there will be one meeting on 14 August when any outstanding planning applications will be considered. It should be noted that the Public Participation session, which precedes the meeting at 7.15 p.m. will be limited to representations relating to the applications included on the agenda. The first full Council meeting following the recess will be held on Thursday 4 September 2014 in the Assembly Room at the Community Centre.

Throughout the recess the office will continue to open to the public between 9.30 am and 12.30 pm, Monday to Friday and if you have any concerns please do not hesitate to contact us through the telephone number and e-mail address given below.

### Council Current Activities

The Council is currently working hard in bringing to fruition a number of projects and initiatives. The main focus is that of completing the Town's Neighbourhood Plan. Hopefully you should all be more

**The Gallery Coffee Bar**  
Warm & welcoming with comfy indoor & courtyard seating

Pop in and see us for:

- ☼ Cream teas
- ☼ Great Coffee
- ☼ All-day breakfasts
- ☼ Delicious homemade cakes
- ☼ Warm bacon rolls served all day
- ☼ Soups, jacket potatoes & panninis

Try our fantastic new Shamoozle Milkshakes

We also sell a range of affordable gifts & pre loved jewellery

**Dogs are welcome**

1 Chapel Terrace, Hayle  
( by Viaduct ) 01736 756829

aware of this as you will have recently received information and a survey through your letter boxes (TR27 postal code residents) and, if not, more information may be found at the Library, Town Council Office or by visiting hayle.net.

We are still preparing to take on the five amenity sites that have been managed and maintained by Cornwall Council in recent years. There have been many delays regarding the transfer of the management of the five sites, which include the Recreation Ground and King George V Memorial Walk, but it is now anticipated that the areas will come back to the Town Council in April 2015. We are currently working towards include further improvements to Footpath 51, which was initially upgraded as part of our Diamond Jubilee Commemorations. This second stage of the project will see the Railway Bridge, approximately half way along the pathway, improved and repainted. The bridge, which believed to be one of the first of its type and is an Ancient Scheduled Monument, should be brought back to its former glory by October 2014.

#### Sponsored Walk

The Mayor's sponsored walk will take place on Sunday 7 September 2014 with a choice of a two or five mile route, so please keep a lookout for further information in the press and on the Council's notice boards. Sponsorship and registration forms are available from the Town Council Office and St Julias's Fund-raising Office. The money raised will be

# Country Skittles NEW

## AMERICAN MENU

- Burgers up to 20oz!
- Chilli Dogs
- Chicken New Yorker
- Juicy Lucy
- Mac 'n' Cheese
- Sloppy Joe's
- and lots more!

### PLUS OUR USUAL MENU



#### Opening Times

SCHOOL & BANK HOLIDAYS:

Mon to Sat: Noon to 11pm

Sunday: Noon to 10:30pm

ALL OTHER TIMES:

Mon to Fri: 6pm to 11pm

Sat: Noon to 11pm

Sun: Noon to 10:30pm



Townshend • Hayle • TR27 6ER  
**01736 850209**  
[www.countryskittles.com](http://www.countryskittles.com)

## Rosewarne Manor Restaurant

Gwinear Road, Connor Downs. TR27 5JQ



01209 610414

Rosewarne Manor

### Award Winning Restaurant.

*A la carte & Quality steaks  
Informal meals &  
Sunday carvery (still under £10)*

Families welcome  
*Large garden & Easy parking  
Disability friendly  
Murder Mysteries*

Main restaurant & private dining

Function rooms for all occasions  
[www.rosewarnemanor.co.uk](http://www.rosewarnemanor.co.uk)

# BARTON

---

# print

Tel: 07799 411525  
Fax: 01736 757022

## Quick Reliable General Printing Service

JUST A SMALL SELECTION OF THE SERVICES WE OFFER!

- BUSINESS CARDS
- COMPLIMENT SLIPS
- NCR PADS / SETS
- LEAFLETS
- MENUS
- NEWSLETTERS
- ENVELOPES
- LARGE FORMAT PRINTS
- LETTERHEADS
- OVERPRINTING

- RAFFLE TICKETS
- B/W COLOUR COPYING

COMPETITIVELY PRICED

1 Turnpike Road, Connor Downs

Telephone 07799 411525 01736 754220

donated to Cornwall Hospice Care.  
Hayle in Bloom

The judging for the South West Britain in Bloom took place on 14 July and, while the weather was not as lovely as we've come to appreciate, the town nevertheless looked wonderful. The Council is delighted to support Hayle in Bloom for all the superb work the organization undertakes in the town and is grateful for the commitment and hard work of its individual members together with that of the town's gardeners. Our thanks also go to Paradise Park for hosting the lunch buffet for the judging. The results will be announced in September.

### Hayle Swimming Pool

The Swimming Pool is now open daily between 11.00 am and 6.00 pm. We all hope that it will be well used throughout the rest of the summer. It is staffed by qualified lifeguards and a lovely place for families to enjoy. There is a variety of tickets and deals available so feel free to speak to one of the team.

Riviere Café is also open and serving a variety of snacks so why not drop in for a 'dip' and a 'bite'.

### Civic Service and Parade

Please put Sunday 12 October in your diaries for the Mayor's Annual Civic Parade and Service. Invitations to all clubs and organizations in the town and visiting dignitaries will be sent out shortly.

### Town Diary

If you know of or are involved with organising any community events please forward all relevant details,

including points of contact, to the Town Clerk so that they may be added to the calendar which may be viewed on the Town Council's website.

Further information on the above and other local issues can be obtained from the Council website and Facebook pages.

Hayle Town Council  
Hayle Community Centre  
58 Queensway  
Hayle  
TR27 4NX  
01736 755005  
[townclerk@hayletowncouncil.net](mailto:townclerk@hayletowncouncil.net)  
[www.hayletowncouncil.net](http://www.hayletowncouncil.net)

## Hayle Neighbourhood Plan

*Make sure you  
have your say.*

Hayle's Neighbourhood Plan team have been out and about getting the views of anyone who lives or works in Hayle.

The team have prepared a Questionnaire of some important issues about Housing, Job opportunities, Leisure activities and Shopping in Hayle. They want to know what are the three best things about Hayle? and the three things you would most like to change? Survey forms will be landing on peoples doorsteps around the 14th July and available online at [np.hayle.net/surveyson](http://np.hayle.net/surveyson) Facebook pages locally and at [hayleneighbourhoodplan](http://hayleneighbourhoodplan) page. They are asking everyone to give your view and post in the collection box at the Hayle Library, Day Care Centre, Mr B's Ice

cream shops or at the Community Centre. If you have any questions concerning the plan or would like to read more then visit the website at [np.hayle.net](http://np.hayle.net)

The community will be in the driving seat of the Neighbourhood Plan, led by a steering group of local people and Town Councillors to ensure that all those who live or work in the Hayle area are able to contribute to its preparation. There will be an extensive consultation process which will take place over the next nine months, then every adult will have an opportunity to vote in a referendum before the Neighbourhood Plan comes into force in their area. Hayle Town Councillor and steering group member Louise Fox said "We had a great response from people at

PASSMORE EDWARDS  
INSTITUTE



## MEETING ROOMS FOR HIRE

Hayle's Village Hall  
has rooms for 2 to 60+  
Children's Parties  
and Catering

For more information:

[WWW.HAYLE-PEI.ORG.UK](http://WWW.HAYLE-PEI.ORG.UK)

[bookings@hayle-pei.org.uk](mailto:bookings@hayle-pei.org.uk)

Or call: 07784-377576

13-15 Hayle Terrace, Hayle, TR27 4BU  
Charity Number 268429

the Blooming Hayle day already, It is important that the plan should reflect the wishes and aspirations of our community and the questionnaire will help us to achieve that“ The team will also be consulting on the priorities for spending the funds from the Community Infrastructure Levy, (the charge that will be placed on most new construction and collected in the town). This could amount to as much as £200,000 a year for the town's groups and facilities.

often found it difficult to have a meaningful say. The introduction of Neighbourhood planning puts power back in the hands of local residents, businesses, councils and civic leaders.

The Neighbourhood Plan steering group meetings are open for anyone to attend (see website for details), if volunteers want to be part of the Neighbourhood Plan groups or contribute please email the Town Clerk at [townclerk@hayletowncouncil.net](mailto:townclerk@hayletowncouncil.net)

It matters?

The planning system helps decide what gets built, where and when. Planning is essential for supporting economic growth, improving people's quality of life, and protecting the natural environment. While the planning system provides opportunities for communities to get involved in development decisions that affect them, in practice they have

N.B.

*A neighbourhood plan is the prerogative of every town and parish council in England. The Localism Act 2011 has given the right to prepare a plan that puts local planning policies in place to interpret and add detail to Cornwall Council's Local Plan.*

**Pasties by Post**

'Pasties by post' is now available at Philp's Bakery. Use our courier service to have our Genuine Cornish Pasties delivered to your door.

Alternatively, you can send our pasties to relatives out of the county or to a member of the family at university.

by *Philp's of Cornwall*

**GENUINE PASTIES CORNISH PASTIES MADE IN CORNWALL**

**Contact us by:**

Phone:  
01736 753343  
or  
01736 755661  
Website:  
[philpsbakery.co.uk](http://philpsbakery.co.uk)

## Life Savers



Hayle Surf Lifesaving Club has received a grant of £499.00 from Councillors John Pollard and John Coombe, through the Councillor Community Grant Scheme.

This grant has been used to purchase two VHF radios, which are used to communicate between the clubs Inshore Rescue Boat and their lifesaving headquarters and the RNLI lifeguards. As well as this, two pool rescue manikins were purchased which are used by all of the club members in their training, these manikins are filled with water to simulate a real body, which is then towed through the water to simulate a real rescue. The manikins can be filled with different levels of water depending on the ability of the rescuer, therefore ideal training for Nippers right up to the masters.

Councillor John Coombe commented "it's great to see so many young people from Hayle and surrounding areas, learning life saving skills and staying fit, especially using our beautiful beach as a base. The age range of those involved in the surf life saving make it a truly family friendly club."

## Café Riviere

Across Hayle's Jubilee Bridge

Serving a variety of hot food, late breakfasts, drinks, ice-cream, cream teas and snacks.

- *Indoor and outdoor seating.*
- *Take-away is available.*
- *Open all year.*
- *Next to the public open-air swim pool, sub-tropical gardens, promenade and nature reserve.*

**Berwicks**

[www.berwicks.co](http://www.berwicks.co)

**Thinking of selling?**

**For a free no obligation market appraisal please call us on:**

**01736 759696.**

**A well established business with fantastic advertising coverage.**

**20 Foundry Square Hayle TR27 4HH**

These grants really help the club to purchase expensive equipment that all can use and at the same time keep the cost of joining, attending training and competitions down to a minimum so that all people regardless of their financial situation can enjoy being members of Hayle SLSC

For more information about Hayle Surf Life Saving Club, look at the club's website [Hayleslsc.org.uk](http://Hayleslsc.org.uk) or contact Dave Parker 07967213204 or follow the club on Facebook.

**HHC Painters &  
Decorators**  
Tel: 07979863153



**Ceilings from £15  
Small rooms from £50  
Bungalows Ext from  
£150**

### ***Lights out***



I don't know if you are aware of the British Legion plan for 'Lights Out' on **Monday 4th August between 10pm and 11pm** to mark the

**centenary of the outbreak of the First World War?** A limited edition Centenary candle is available from [M&S stores and online](#) for £4, with all profits going to The Royal British Legion. It may be something for our whole community in Hayle to take part. If you do join in, please

extinguish any candles safely before going to bed. *Shirley Thompson*

**Hayle British Legion** would like to invite you all, to attend two forthcoming events to commemorate the start of the First world War. The first event is **LIGHTS OUT a Candle Light Service to be held at St. Elwyns Church on Monday 4th August at 10p.m.**

Please bring your own candle or tea light. The second is THE GREAT WAR 1914-1918 Service of Remembrance to be held at St. Elwyns Church on Sunday 10th August at 10am. After the service we will parade out the back lane to the War Memorial for a further very short service & laying of wreath.

Please bring your standard if you have one & please feel free to dress as in 1914. We hope you will be able to join us to remember this momentous

## **MUSIC LESSONS**

Piano, keyboard, organ, singing  
and theory of music.

- ♪
Beginners to diploma level
- ♪
Adults and children
- ♪
Examinations or fun!
- ♪
No group tuition whatsoever  
—strictly" one to one" basis.

**NEIL SHEPHERD**

**Details 07950 585787**

[www.neilshepherd.org.uk](http://www.neilshepherd.org.uk)

occasion in history, & remember the 51 names on Hayle's War Memorial.

*Shirley Hayes*



Well done to Hayle's very own Mr B's Ice Cream Parlour .

Named in the top 10 best ice cream parlours in the UK. Just confirming what we all know in

Hayle already. Yum!

## *Doyathinkhesaurus*



This summer Paradise Park have introduced a Dinosaur Quiz Trail around the park which is proving extremely popular. The ' Parrot Jungle' has been taken over with life-size dinosaurs. The Park is famous for its fabulous tropical birds, and the new trail celebrates birds earliest



Compliant with the IPW Code of Practice

TP  
wills & probate  
LIMITED

## Will Writers & Probate Practioners

Wills, Trusts, Lasting Powers of Attorney, Care Fee Protection, Funeral Plans & Probate.

Free initial consultation with no obligation. Evening appointment available at your home.

*It is never too early to make a will but often too late. No will can cause emotional and financial problems. For a small investment you can write what you want in your will.*

Tel 01736 755125

Mob 07900 323939

email enquiries@tpwills.co.uk

18 Trelee Close Hayle TR27 4QB

www.tpwills.co.uk

## Kernow Auto Glean

### Car Valeting Services



For Prices on Services

please contact

07788 459884 or

harry@kernowautogleam.co.uk

Services include  
Basic Hand Wash  
Wash and Vacuum  
Budget Vacuum  
Full Valet  
Interior Valet  
Exterior Valet



relatives, the dinosaurs! In between meeting the birds in the aviaries and at the free flying shows you can explore the grounds on your own prehistoric expedition. Search for the dinosaurs and their eggs, answer all the questions and they will award you the special 'Paradise Park Professor of Palaeontology' certificate!" You will be able to enjoy all the daily activities including Carrot time in the Fun Farm, Penguin feeding, the The Eagles of Paradise Display (weather permitting), the indoor Jungle Barn and much more.

The Otter Pool Café offers light lunches including home-made specials, local pasties, a wonderful selection of cakes and Cornish cream teas – plus for kids they have special Dinosaur themed lunch boxes! Please visit [www.paradisepark.org.uk](http://www.paradisepark.org.uk) for all the latest news.

\*

# Des Button

## SPRINGFIELD

**33 Clifton Terrace**  
**Hayle TR27 4BP**

# ELECTRICAL SERVICES & SUPPLIES

**01736 753211**



**PART P  
REGISTERED**



which included a flock of 71 at St Just on 16th May, a new Cornish record. Perhaps they passed over the peninsula south of the town.

At Ryan's Field, the pair of Oyster catchers successfully raised three chicks on one of the islands in the lagoon. This is the 11th year running they've bred here and they represent the only pair we know of that nest in west Penwith.

Our stall at the Hayle In Bloom celebration on 29th June attracted a lot of interest and it was a good opportunity to catch up with our friends and supporters in the town. We're always looking for volunteers to help with our monthly litter picks (on the second Sunday of each month) at Copperhouse and



Avian highlights recently have been fly-over Red Kites on 13th and 15th June. This is becoming an annual event at this time of year since about 2008 and is a result of a number of successful breeding seasons where this species has been reintroduced 'up-country'. For such a magnificent bird, it was a shame we missed the main influx,

# Win a Cream tea for 2

*courtesy of The Gallery Cafe*



Q. In a traditional Hayle cream tea, what is put onto the scone first?

1. Butter
2. Jam
3. Clotted Cream

*Drop in your answer to The Gallery Cafe,  
Chapel Terrace, Hayle. Or email:  
editor@haylepump.org.uk*

*Closing date 13 Sept 2014. Editors decision is final.*

## Computer / Laptop Problems?

I can restore your computer or laptop to full working order  
for a fantastic price

### NO CALL OUT CHARGE

Professional repairs and maintenance of  
full systems and networks

Call today for a FREE no obligation quotation

**PC REPAIRS • PC NEW BUILDS • PC REBUILDS •  
PC UPGRADES • PC TRAINING • DATA RECOVERY •  
NETWORK INSTALLATION & MAINTENANCE**

For a prompt and reliable service  
call Tim Cogher at TeeCee Tech today



**07730 283433**



**01736 850798**

All your favourite hard to find  
Homecare Health products and  
quirky gadgets.

**NOW ONLINE**

[www.kleeneze.com/nickpincott](http://www.kleeneze.com/nickpincott)

This 88year old British catalogue  
company has joined the Web!  
Order online but still receive the  
friendly free delivery and pay on  
arrival, service from your local  
distributors.

*All online orders will receive a FREE  
mystery product sample!*

**PH 01736 850840 07957897270**

See you soon,  
Nick & Jan Pincott

Carnsew Pools so if you are  
interested please give us a ring on  
01736 360624.

Good birding!

Dave Flumm & Jenny Parker

## **The Hayle Walk For Cornwall Hospice Care**

The Hayle Mayor, Councillor Graham  
Coad, invites you to **step into  
action** and join the sponsored walk to  
help raise funds for Cornwall Hospice  
Care, which incorporates St Julia's  
Hospice in Hayle.

Organised by Cornwall Hospice Care  
and supported by the Mayor and Hayle  
Town Council, the walk takes place on  
Sunday 7<sup>th</sup> September and is open to  
everyone - including their dogs.

Registration forms are now available  
from St Julia's Hospice fund-raising  
office, Hayle Town Council and the  
Hayle Cornwall Hospice Care shop.  
Alternatively you can download the  
form from

[www.cornwallhospicecare.co.uk](http://www.cornwallhospicecare.co.uk) on the  
events and challenges page.

Please register early in order to receive  
your sponsorship form so that you can  
start raising much needed funds for your  
local hospice.

Walkers can choose between a 5 mile  
walk – including some coastal footpath  
and inclines, or a 2 mile walk - including  
the King George V Memorial Walk. The  
2 mile walk is suitable for all ages and  
abilities – including mobility scooters.  
Both walks start from the Hayle Open



### **NORTH WARD**

John Pollard  
[www.djpollard.co.uk](http://www.djpollard.co.uk)

**07967 272808**

### **CORNWALL COUNCILLORS FOR HAYLE**

Contact us directly  
or

Surgery held on 1<sup>st</sup> Saturday of Each Month  
at Hayle Library & One Stop Shop

**0300 1234 100**

### **SOUTH WARD**

John Coombe

**01736 752831**



## **P.D.H Builders & Roofing**

High Quality Guaranteed Work

Contact: Paul Moyle

**07989 075517 01736 719469**

5a Bodriggy Street, Hayle TR27 4NB  
pdhbuilders1@hotmail.co.uk

FOR ALL OF YOUR BUILDING REQUIREMENTS

Air Swimming Pool car park and registration for the 5 mile walk starts from 1.30pm, and from 2.30pm for the 2 mile walk. Refreshments will be provided and bottles of water for walkers to take en-route will be available thanks to the support of Bookers Cash & Carry.

Graham Coad, Mayor of Hayle, said: "I am really pleased to be supporting Cornwall Hospice Care and I would like to encourage as many people as possible to join me and the Deputy Mayor Councillor Nick Farrar in supporting this event which raises money for a cause that is very dear to our hearts. If you are unable to participate then please sponsor someone you know who is walking, or feel free to sponsor me. Donations can be sent to the Hayle Town Council Office at 58 Queensway, Hayle, TR27 4NX" **For more information call Sarah Newton at St Julia's Fund-raising office on 01736 755770**

**Heyl St. Piran Singers** is a ladies' choir that rehearses every Thursday evening at Hayle Methodist Church Hall, from 7.30 pm

to 9.30pm. On **Sunday 10th. August, at Phillack Church Hall, starting at 7.30pm, we will be hosting "an Evening of Entertainment"**, when we will perform some of our songs as well as enjoying other guest artists [including a magician!] and the chance to win our raffle. Entry is free but there will be a retiring collection. Please do come along, support your local choir, have a pleasant evening, and perhaps join. The choir will also be taking part in "songs of praise" to be held at Hayle Day Care Centre on Sunday 3rd August starting at **6pm**. The choir welcomes new members and gives them a great deal of help and support. So



### **Computer Coach**

**One to one support  
with using and  
maintaining your  
computer system**

**Comptia A+ Trained  
and CRB Certificate**

**Phone: 07929869545**

**P.jacobs@talktalk.net**

ladies, do come along and join this friendly and welcoming choir. you don't need to be Dolly Parton, or to read music, or to audition- just to have an enjoyment of singing. The choir has a very wide and varied repertoire with music to suit all tastes, from sacred songs, madrigals, barber shop, and popular songs to songs from the shows . To all you ladies who have thought about joining a choir but just haven't yet plucked up the courage, we say "Do come along on a Thursday evening and find out how enjoyable it can be to sing in a group". For further information about the choir call Ann on 01736 752335.

## HAYLE FILM CLUB

*Hayle's Community Cinema*

### **Hayle Film Club begins a new season.**

On Saturday, 13 September, Hayle Film Club will begin its third season of community cinema screenings. The autumn programme will have yet to be decided by the time the pump goes to press, but possible titles include **The Grand Budapest Hotel, Nebraska, The Lunchbox, The Invisible Woman, Half Of A Yellow Sun, The Great Beauty** and/or other well-received recent films in our autumn line-up. Look for publicity

# CLIFFORDS

## Plumbing & Heating

Boiler Changes - Full central heating - Servicing - Landlord Certificates

Dripping taps to complete bathrooms - All plumbing work undertaken

Free quotations

Local, Reliable, Clean and friendly service



# 01736 755170

07761 938183



**Fully Qualified, Gas safe Registered and Water Industry Approved**

[www.waterworkscornwall.co.uk](http://www.waterworkscornwall.co.uk)

posters around town. The programme will be published online at [www.haylefilmclub.org.uk](http://www.haylefilmclub.org.uk). Committee volunteers are needed. Join us!  
Donna Anton, Chair  
01736 753184

## ***25 Years in the town, it seems like only yesterday.***

**Flowertime Florist** was established on the 18<sup>th</sup> September, 1989. The business was founded by Mark Nicholas at the age of 18, a Hayle resident all his life. As the business has expanded and grown Mark's wife Rebecca, also a qualified florist, has joined the team making Flowertime a successful locally run family business.

Flowertime started off in a unit in the front of Pratt's Market then moved to 5 Penpol Terrace before finally settling at 17 Penpol Terrace, next door to Blewett's Toy shop.

Since Flowertime was established Mark has become the highest qualified florist in the Cornwall area, gaining the National Diploma of the Society of Floristry (NDSF) and the American Institute of Floral Designer's (AIFD) qualifications. Mark has demonstrated and judged nationally and has been invited many times to exhibit at the Chelsea Flower Show, where Flowertime Florist has gained numerous medals including gold.

Mark and the business always tries to

*Transformations  
Cornwall*

*Give your home a luxurious finish  
Create the style you desire  
Bespoke curtains, blinds and soft  
furnishings.  
Handmade to a high standard  
Professional, friendly service*

*Elizabeth Gregg  
17 Penpol Road Hayle  
TR27 4AD*

**01736 752434**

*elizabeth@transformationscornwall.co.uk*

*www.facebook.com/  
TransformationsCornwall*

**ALL AERIALS**

**TV Aerial & Satellite TV Specialists.**

**digital** 

**Registered Digital  
Installer**  **25 Years Experience**

**For all aspects of Tv Aerials,  
Satellite Systems Fixed &  
Motorised, Installations &  
Repairs**

**Free Friendly Expert Advice By  
Local Engineer.**

**Tel : 01736 759225**

**Mobile : 07979503907**

**Email. jonathan@allaerials.co.uk**

*Bridalwear Specialist  
Day and Eveningwear  
Alterations/Repairs  
Curtains/Cushions  
Affordable prices*



Tel: 01736 758249  
Mob: 07565539969  
www.brideandchic.com  
Sue Seabury

## PLANTECH

THE FRIENDLY RELIABLE SERVICE

- Lawns cut and borders weeded
- Hedges trimmed
- House, garden & building waste taken
- Garden clearance work
- Gravel, sand, topsoil delivered & laid
- Garage and loft clearances
- Free no obligation quotes

(Tel) 01736 754401 / 07979546434



prizes, demonstrations and raising funds for different needy causes.

Flowertime began by selling just flowers and plants, but over the years has expanded its range of products to include greetings cards, handmade jewellery, chocolates and soaps, candles, vases, glassware and a whole host of great gifts.

They provide for all occasions, specialising in gift, funeral and wedding flowers. Where possible, Flowertime prefers to sell locally sourced flowers and plants, supporting many local Cornish growers, but in addition to this Flowertime has flower deliveries from Holland four times a week, and can source almost all flowers year round. Flowertime is able to deliver flowers locally, nationally and internationally through a network of associated florists around the world and has two website [www.flowertimeflorist.co.uk](http://www.flowertimeflorist.co.uk) and [www.wesendflowers.co.uk](http://www.wesendflowers.co.uk) which are fully secure e-commerce sites.

Exciting times and plans are in the pipeline for Flowertime, to carry it forward for the next 25 years.

**Mark, Becky and the team at Flowertime would like to thank all their customers, friends and suppliers for their support over the last 25 years, and look forward to seeing you all in store very soon.**

\*

*If 4 out of 5 people SUFFER from diarrhoea...does that mean that one out of five enjoys it?*

## R.N.L.I.

The annual RNLI Flag day  
will be held on Friday  
August 8<sup>th</sup> from  
10 am to 4 pm.

Volunteers will be out and  
about and will be grateful  
to receive your donations.  
All donations are used for  
the RNLI to help save lives  
at sea.

### *Hayle Library*

Come and see us at Hayle where we provide a wide range of library and council services from issuing books, computer access to paying your council tax, garden waste applications and bus passes. We also have the Tourist Information centre at Hayle. We do it all! The most important change is that from the 1st June we are closed on a Tuesday as well as a Thursday. The Book group Chapter & Verse do not meet in the library any more, they are meeting at each other's house's from 2-3pm on the 1st Wednesday of the month. We can put you in touch with the group leader. The Writers' group still meet in the library every other Thursday morning when we are closed to the public. We have a Bounce and Rhyme session for babies and toddlers on Wednesday mornings at 10.30 and Storytime and Fun has moved from Tuesdays to Wednesdays at 3.45 for the



**Lawrence  
Butcher**

## **Chimney Sweep**

**Brush N Vac, Cows  
Fitted, Reliable clean  
service, free advice**

**Enfield Farm 30 Hayle rd,  
Fraddam, Hayle TR27 6EH**

**01736 850033**

**07966 547829**

**loloubutcher@aol.com**

slightly older children after school. The Summer Reading challenge theme this year is Mythical Maze so if you have children between the ages of 4 and 11 bring them along to join the SRC. Apart from plenty of great books for children we have a special collection of fiction, graphic novels and manga for young adults, so with our huge range of adult books, including large print, audio books and a wide selection DVDs for all ages we're sure we have something for everyone. We provide a home library service for any customers that are housebound. We are very lucky at Hayle and have a fantastic team of volunteers who choose and deliver the books to our housebound customers so if you would benefit from this service please get in contact with us and we can set this up

## GUITAR LESSONS



Acoustic, Electric,  
Bass & Banjo

All ages and abilities  
All styles folk/rock/pop

Phone 01736 753709  
Mobile 07866 372715

for you. We are planning on running some computer classes for beginners on a Tuesday when we are closed so if you are interested please ask one of the team for more information. It will run over a 4 week period. We also have the local Cornwall councillors John Pollard and John Coombe who hold a surgery on the first Saturday of every month in our building. So come down and see us. And

## *Lavender's blue* Garden Nursery

**Locally sown, grown and nurtured plants**

*1 Penpol Avenue, Hayle, TR27 4AA*

*(Opposite Penpol School)*

**01736 754844**

**A wide range of seasonal bedding plants, perennials, herbs & alpines.  
Hanging baskets made to order. Free delivery in the Hayle area.**

[www.lavendersbluenursery.co.uk](http://www.lavendersbluenursery.co.uk)

**Open Tuesday to Sunday**

if you're not a member already,  
remember it's free to join. You just need  
to bring proof of your address.  
See you soon.  
From the team at Hayle!!

**The Hayle and District Lions  
are organising a FUN DAY at  
Hayle recreation ground on  
SUNDAY AUGUST 3rd.**

They are inviting all clubs and organisations in the Hayle area to have a stand or to bring along an activity for the children and adults of Hayle. The idea for the day is to have fun and enjoyment. If you would like to get involved please contact John on 01736 752 721 for more details. There will also be a BBQ, bar, tea/coffee etc, fairground rides and activities including the ever popular TUG 'O' WAR... to top it all off there will be a fantastic fun dog show that all dog owners can participate in..

**SEE YOU ALL THERE**

**Save Our Sand (SOS)  
Annual General Meeting  
Report by the Chair**

The year 2013/2014 has been a highly successful one for SOS. We have had a very low profile as our primary purpose of stopping the removal and sale of sand from beaches around Hayle has not been challenged. The memorandum of understanding arrived at between SOS and harbour owner ING has been honoured. So our public image has been very quiet as direct action through demonstrating and lobbying has been unnecessary. Equally

**THE FARM SHOP**

31 Penpol Terrace, Hayle,

TR27 4BQ

Open 6 days a week

8am-5pm

**FOR ALL YOR LOCAL PRODUCE**

Fruit, vegetables, plants, flowers, free  
range eggs and Cornish potatoes.

**NOW IN**

New Cornish potatoes

New bunched carrots

Local strawberries

Summer cut flowers

**ANGOVE**

**SPORTS**

**COPPERHOUSE,**

**HAYLE.**

**Tel(01736) 752238.**

**For all sports equipment,  
clothing, footwear  
and fishing tackle.**

**Rackets repaired  
and restrung.**



## The Ladies Room

@

### TJ's Barber Shop

2 Market Square,  
Copperhouse, Hayle

Ladies Cuts from only  
£10.00.

Just walk, appointments not  
always required. All aspects of  
hairdressing available.

Tel 01736 757000

## TJ's Barber Shop

2 Market Square,  
Copperhouse, Hayle.

Opening hours

Tue 9 - 5pm

Wed 9 - 6.30pm

Thur 9 - 5pm

Fri 9 - 6pm

Sat 9 - 4pm

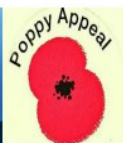
Over 20 years experience in  
Modern & Traditional Barbering.

No appointment required.

Tel 01736 757000

our stance on the proposed 'environmentally friendly' activities of Marine Minerals has been justified. We advised the company that we were 'viscerally opposed' to their objectives but that we were prepared to await their detailed proposals once they had completed their feasibility study, before finalising the SOS position. The lack of activity by the company suggests that this initiative may have stalled.

In both of the above cases SOS retains a watching brief and will act if necessary. Similarly the development of the Asda supermarket is being watched carefully. We are mindful of the Section 106 (S106) agreements between ING and the Cornwall Planning Department, especially those covering the reinstatement of the Carnsew Sluice and harbour walls and structure. These repairs must precede the opening of the store. Also relating to the Harbour, we have developed a good relationship with Bowmer and Kirkland who are building the supermarket for ING and Asda. This has included an accompanied first site visit by SOS members to the harbour, dressed in hard hats and other Health and Safety attire. Our active successes as an organisation are currently achieved in association with others. For example the S106 covering the Carnsew Sluice sadly only required a manually operated sluice gate. However with the active support of others we have managed to negotiate that this sluice gate will be capable of power assisted operation. SOS have voted funds to this end and also been promised a generous donation to support this work in the name of the Cartmell family. Our relationship with DEFRA has been a much more patchy affair, and we have established an excellent working relationship with Natural England, whereas the



*Charity Fundraising Evening*

*At Hayle Rugby Club*

*In Aid Of*

**Help for Heroes and The Poppy Appeal**

*7pm till 11.30pm Saturday 16<sup>th</sup> August!*

*An Evening of Entertainment with*

*Pete Caradine*

*And Guests*

*Great sounds from the 50's to the 90's*

*Come in Fancy Dress anything you like from the 50's to 90's*



*Fancy Dress*



*Prize for best fancy dress*

*Buffet, Raffle and Auction.*

*Tickets £5.00 or Pay on the night £5.50*

*For more information Contact Mike or Paul*

*On.01736758482 or 448614*



**Classes at the  
Passmore Edwards Institute**

Suitable for all ages and abilities

Classes run throughout the year

**Mondays 7.00-8.30 pm**

**Tuesdays & Fridays 9.30-11.00 am**

Please phone Gwyn for details on

**01736 791784**

**or**

**07815945695**

**HANDYMAN**  
**EXPERIENCED & RELIABLE**

**"NO JOB TOO SMALL"**

*Completing all those jobs  
you've been meaning to do!*

*Painting / Decorating  
Repairs / Flat-pack Assembly  
Fencing / Sheds*

**CONTACT**  
**RICK HARVEY**  
**01736 752811**

Environment Agency (EA) has been problematic. Meetings with EA officers have been positive when they have been organised, however follow through by the EA has been entirely absent.

Other organisations with whom we liaise and work effectively include the Hayle Town Council, Cornwall Council, the Hayle Harbour Advisory Committee, the Hayle Harbour Master, and RSPB. An SOS initiative seems to be set to introduce a highly innovative technology to improve Hayle Harbour access through the use of Eco Gabions which are large baskets made of recycled tractor tyres and reject digital fibre cable baskets filled with rocks.

These baskets are forecast to have a life of several hundred years, unlike metal gabion baskets that have a life of about ten years.

The other areas of activity where we are enjoying considerable success are community focussed. Our fund raising coffee mornings are very successful with regard to the financial goals. However their greater success is in providing ongoing evidence of the broad and deep support that we enjoy in the community. The footfall at these events is excellent.

Also important to our Community Engagement we are maintaining our successful initiative of beach cleaning. This is usually associated with one or other of the holiday parks (or the harbour owner) who typically provide additional staff to join our volunteers, as well as taking responsibility for removing rubbish, and who often entertain volunteers to drinks and snacks after the beach clean.

As well as undertaking the necessary physical activity of ridding our beaches of refuse, we also find that members and other volunteers enjoy the opportunity to engage in a physical activity and bond in our support for our beaches and sands.

A further new area of community

engagement has been to support a secondary school in Redruth in their GCSE course work. Students undertook a survey of Hayle residents concerning the beaches. This was presented to an SOS meeting. There are matters of on-going business. We should note that we have so far been unsuccessful in obtaining a memorandum of understanding with the Hayle Harbour Trust (HHT) covering the extension of that reached with ING, if they become harbour owners. Whilst appreciating that the first duty of any Trustees may be said to be the financial survival of the organisation that takes precedence over Corporate Social Responsibility, we will continue to promote the continuation of the memorandum of understanding with ING with the HHT or any other organisation that acquires the Hayle Harbour. Finally we must note that we are as usual well looked after by the Passmore Edwards Institute which hosts our meetings.

*Howard Lyons*

## TOP QUALITY JUMBLE SALE

**Phillack Church Hall,  
Saturday, 9 August:  
10.00 to 1.00.**

Good as new clothes, including children's wear, plus bric-à-brac and books. Come and get them before they are sold out.

Proceeds to Phillack Parish Church.

## LINDSAY'S DOG GROOMING

*Dog grooming for all sizes,  
breeds & coats.  
Specialising in Poodles.*



For more information,  
contact Lindsay on  
**01736 753864 or 07792 849240**



<i>Situated at</i>	<i>Local</i>
<i>Connor Downs</i>	<i>collection</i>
<i>in Hayle</i>	<i>&amp; delivery</i>



**Want to play music?  
You're never too old!**

**Learn music the fun way  
with Graham Smith**

I'm a Registered Guitar tutor, a coach and session musician with over 30 years' experience. I believe that anyone can learn to play. I can help you to learn guitar, bass guitar and blues harmonica and to write songs and record them.

**Call me on 01736 740141**  
(based near Penzance)

[graham@musictuitioncornwall.co.uk](mailto:graham@musictuitioncornwall.co.uk)

[www.musictuitioncornwall.co.uk](http://www.musictuitioncornwall.co.uk)

## **Millpond Update 'Bridging the Gap'**

Spring has now given way to summer, and the yellow flags and rhododendrons put on a great floral display this year. The warmer weather is bringing out the butterflies, dragon and damselflies all around the site and both our herons are visiting the ponds regularly. The kingfishers are making vivid hunting visits along the banks of the Upper Pool. Sadly, Freya did not hatch again this year in spite of laying four eggs, but she is still very young. She is only four years old, going in to her fifth summer. So we are still hopeful that they will produce cygnets eventually. In the meantime the drakes are beginning to drift back home. Thirty have arrived so far and

## **P G FRANKLIN**

Chapel Hill, St Erth

Carpenter & General House Repairs  
Garden Landscaping

NO JOB TOO SMALL

**Telephone: 01736 757360**

**Mobile: 07778 739341**

are 'eclipsing' (moulting) quite happily. They will now spend the summer in a state of glorious tattiness until they regain their glorious breeding plumage again. Piran, our baby turtle, continues to thrive and seems to have acquired a fan club, with visitors and passers-by tending to look out for him around the Swan Pool.

Vandals have wrecked the bench on

## **W J WINN FUNERAL DIRECTORS**

We are here to help you 24 hours a day

- Funeral Pre-Payment Plans
- Memorials
- Private Chapels of Rest

### **WJ WINN**

Trenwith Terrace  
St Ives TR26 1QE

**Tel: 01736 793029**

### **WJ WINN**

69 Fore Street  
Hayle TR27 4DX

**Tel: 01736 752124**

### **CHARLES BRYANT**

North Road, Goldsithney,  
Cornwall TR20 9JY

**Tel: 01736 710318**

### **MARAZION FUNERAL SERVICE**

Back Lane, Marazion, Cornwall TR17 0HE

**Tel: 01736 710318**



Part of Dignity plc. A British Company.



the Observation Platform again and taken away one of the pieces of play equipment from the Playing Area. The police found it on the Island. The flimsy bridging material has been removed for safety and replaced by the back of the bench as a temporary stable bridge to the Island. It will be replaced by a permanent safe structure which is already in the process of being designed. Our main concern is that we do not have a repeat performance of the unruly camping and the pile of rubbish which resulted from it last summer. We just ask that the Millponds be respected for what they are, an important historical and ecological site. We are an urban Nature reserve and being only two minutes from Foundry Square you don't get much more urban than that. On the seventh of July Millponds became very 'Bee Aware' when a swarm of bees arrived in the gardens. They were safely collected by Hayle in Bloom's treasurer, Nigel Powell, and Nick Reynolds, and taken to Paradise Park. We are intending to hold a Volunteer Day at the Millponds to carry out some necessary maintenance. Please come and join us. Dates will be published soon and we look forward to seeing you!

Georgina Schofield  
Volunteer Wildlife Warden

*Age is an issue of mind over matter. If you don't mind -it doesn't matter. (Mark Twain)*

## WEST CORNWALL MOBILE FOOT CLINIC

For the professional  
treatment of:

**Corns & Callus**  
**Diabetics**  
**Verrucas**  
**Athletes Foot**  
**Thickened Nails**  
**Fungal Infections**  
**Ingrowing Toe nails**  
**Can't cut your own nails**

**All in the comfort in  
Your own home**



**Peter Williams**

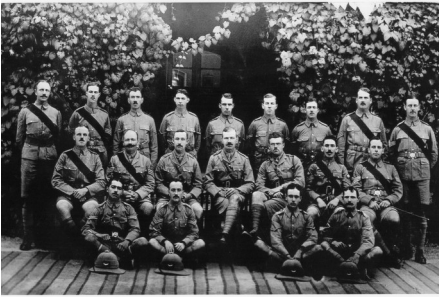
S.A.C.Dip FHPT/FHPP

**Tel: 01736 751752**

**Mob: 07901 803493**

Evening and weekend calls available  
[pwpetewilliams@googlemail.com](mailto:pwpetewilliams@googlemail.com)

## **'Hayle and the Great War'**



The Trust has been working for over a year on a community project called 'Hayle and the Great War' working with a wide range of community groups throughout the town, collecting information, memories and research. This work has resulted

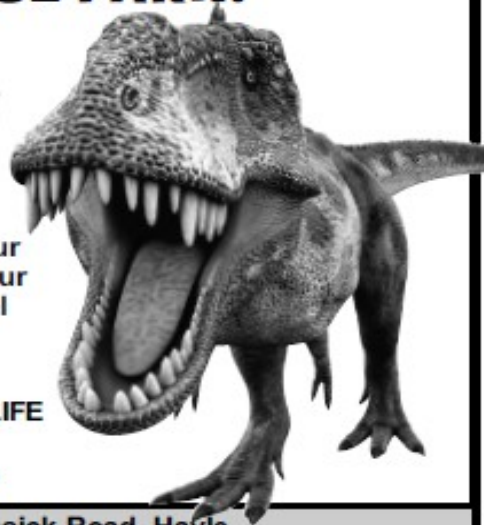
in a fascinating exhibition that explores Hayle during the war, with never seen before photos and memorabilia on display, the exhibition also includes work produced by Hayle and St Erth Brownies, Hayle Community School and Bodriggy Surgery Arts Group. The exhibition will run from Monday the 4th of August to Friday the 22nd of August and will be open Monday, Wednesday and Fridays 11- 4. On Tuesday the 5th of August we will be running free craft workshops all day for families, you can learn how to make poppies and medals whilst learning some of the history behind them – these free workshops are suitable for

## **DINOSAURS HAVE ARRIVED AT PARADISE PARK!**

### **DINOSAUR QUIZ TRAIL**

Explore the grounds on a dinosaur expedition, discover answers to our questions and claim your special 'Paradise Park Professor of Palaeontology' certificate!

- PLUS ALL OUR WONDERFUL WILDLIFE AND GREAT DAILY EVENTS ·
- STAY ALL DAY · FREE PARKING ·



**Paradise Park, Trelassick Road, Hayle**

Open every day at 10am Infoline: 01736 751020 [www.paradisepark.org.uk](http://www.paradisepark.org.uk)

children of all ages and will be running from 11-3. Hayle heritage centre is having a great 2014 season so far with lots of people coming through the doors and a large number of interesting artefacts being donated. We are still on the lookout for volunteers to join our friendly team so if you have a love of history pop along and see us. Our website ([hayleheritagecentre.org.uk](http://hayleheritagecentre.org.uk)) has regular updates and useful information or you can call me on 01736 757683.

*Laura @ Hayle Heritage Centre*

Over 23 years in that shop we met some lovely people, we came to think of them as friends because those who were visitors on holiday would make a point of coming to see us each time they came to Cornwall. With the local residents that we grew fond of it was a very happy life. Now the shop has become vacant we would like to see it become alive again with arts and crafts from local talented people. If we could join together a group of artistic like-minded people to form a co-operative producing a range of original work, it would be a very interesting shopping experience for visitors to the region as well




**David N'jie**  
PAINTER & DECORATOR

07944 156995    01209 831397

[dn-jiepainter-decorator@hotmail.com](mailto:dn-jiepainter-decorator@hotmail.com)  
Trethannas Cottage, Praise-an-Beeble  
Camborne TR14 0LH

**HARVEY**  
THE HOLIDAY COACH NEAR THE COAST



**LARGE FULLY ENCLOSED GARDEN**  
**TRAIN VIEWING DECK**  
**SWINGS AND PLAYHOUSE**  
**COVERED CYCLE STORE**

**WWW.RAILHOLIDAY.CO.UK**  
**01503 230783**


***Business Opportunity!***

Everyone has a landmark in life. In 2011 my husband and I decided to retire. It was with mixed feelings that we made this decision because we had been very happy in our shop in Canon's town where he made and repaired jewellery, and I was busy displaying and selling it.

as local people. The cost to the group members would be a fraction of taking on a shop in the normal way because all expenses would be shared, and also shop duties, leaving more time to do what they enjoy doing and producing original artistic pieces.

Our vision is to see a broad mix of individuals and skills, somewhere in that mix a jeweller would be a great asset as we know from experience jewellery sells well from this shop. At the of the entrance is a metal advertisement board approx. one metre square which would be ideal to list all group members and their skills. At the

## *Foundry Fruit , Veg & Deli*

 *Local seasonal veg, honey, eggs & flowers. Delivery service & gift box orders available. Herbs & spices . Open Mon-Sat 8.30 to 5pm.*

*Phone 07740 663004*



*Find us on Facebook*



both directions to advertise the delights to be found within. Best of all this advertising is FREE and always, without exception, worked better than any we ever paid for. We know from the years that we worked there that our business stood out because it was in a prominent position and not mixed up with a lot of other shops. With all the young as well as more mature talent in the South West, this could be an important stepping stone in a career. If you are inspired to join this project, please contact me by phone 01736 740626 or email: [sylvia-thompson@hotmail.co.uk](mailto:sylvia-thompson@hotmail.co.uk)

## **Memory Walk**

### **Sunday 14 September 2014**

The second West Cornwall Memory Walk in aid of the Alzheimer's Society will be taking place this September around Hayle Copperhouse Pool. Organiser Katherine Strick said "the walk encircles the historic Copperhouse Pool with an option of a longer walk for those who wish. Last year we raised

# **PHILIPS**

## **HOME IMPROVEMENTS**

**FOR ALL YOUR BUILDING  
AND RENOVATION WORKS  
UNDER ONE ROOF.**

**LOCAL FIRST CLASS TRADES  
FROM FLATPACKS TO  
EXTENSIONS.**

**Mobile 07857 607697**

**Office 01736 752125**

**[bbcurren@btinternet.com](mailto:bbcurren@btinternet.com)**

£2526.17 thanks to the fifty walkers who took part. We hope this year a greater number of people will get involved. If you love walking and are feeling fit then please join us for the full distance, if the shorter route is more manageable we would be delighted to have you too. It is flat and accessible to wheelchairs and buggies so there is no reason not to get involved.” Over 9,000 people in Cornwall are estimated to have a dementia; over half of those without a diagnosis. If this affects four other people in their lives, for example spouse, children, neighbours or friends that is nearing 50,000 people. Fear of dementia can prevent people seeking help and getting that diagnosis, and so not accessing the help and services available to them. Many people living with dementia can feel they have little say in

## *Daisy Potter Vintage Clothes*

Vintage designer clothes

Jewellery

Accessories

Collectables



Unit 7-8 Foundry Shopping Village

Hayle, Cornwall, TR27 4AB

01736 754836

Facebook: Daisy Potter Vintage Clothes

the services they receive and what would be most useful for them. They can enjoy a good quality of life and achieve all sorts of things, and it is important that society recognises this. The Alzheimer's Society in Cornwall supports people living with dementia to have their voices heard. Funds raised from last year's walk helped to support services such as Memory Cafés providing a place for

## TJ'S CARPETS LTD.



**New Showroom at Tolroy Garage,  
58 Mellanear Road, Hayle TR27 6HF**

Come and see our wide selection of carpets & vinyls,  
laminates and patterns

**Our famous home selection service still available**

Full range of flooring accessories

**Call Now! 01736 757540 or 07976 608215**

Free measuring & estimate service

**“Before You Buy, Give Us A Try”**



CORNWALL CHIROPRACTIC CLINIC

— maintaining your lifestyle —

Sports Massage | Reflexology | Chiropody / Podiatry | Hypnotherapy | Nutrition  
Acupuncture | Yoga & Pilates | Chiropractic Care

21 Foundry Square, Hayle, Cornwall, TR27 4HH

**01736 759 088**

[www.cornwallclinic.co.uk](http://www.cornwallclinic.co.uk)

For patients who are unsure which treatment is appropriate we can offer a  
FREE 15 minute consultation on request.

people to meet and talk socially; a volunteer run telephone befriending service; a local information service that answers queries from professionals and members of the public, and two 'Singing for the Brain' groups. These groups stimulate brain activity in a fun and supportive environment, they are very popular and filled with laughter. Last year's money also went towards the research supported by the Alzheimer's Society into advances in understanding dementia and future treatments.

The Alzheimer's Society is entirely reliant on fund raising, whether you raise £1 or £1,000, the Society puts it towards ensuring those living with dementia can hope for a better future. If you are interested in walking, or helping out, please contact Katherine Strick or the team at

[westcornwallmemorywalk@gmail.com](mailto:westcornwallmemorywalk@gmail.com)

Or telephone 07935 989 686

Memory Cafés are held in Camborne and Redruth, with Singing for the Brain groups held in Penzance and Truro. For information about these groups please ring 01872 277963 or visit the website [www.alzheimers.org](http://www.alzheimers.org)

### **FREE FILM NIGHT!!**

As part of Hayle and the Great War exhibition, on Saturday 6 September at 6.00pm Harvey's Foundry Trust will be running a free showing of the film "GALLIPOLI" at the Passmore Edwards Institute.

This film about the First World War follows several young men from rural Australia who are sent to the

## THE SETTING SUN

A selection of published poems by  
Malcolm J Swingler.

Observations of love, life, loss, people,  
animals, places and events mostly  
conceived/set in West Cornwall. Limited  
number now available from the author  
at: Calador, 28 Upton Towns,  
Hayle. TR27 5BJ

Tel 01736 753057.

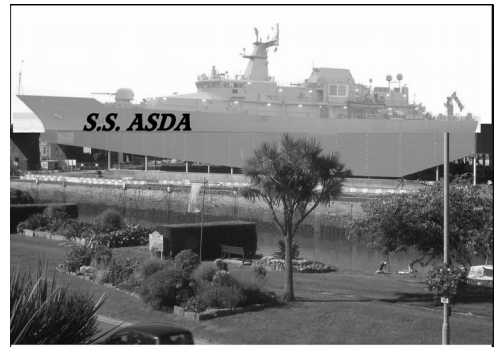
Only £3 per copy  
(half the publisher's RRP) post &  
packaging free.

Please telephone before ordering.

peninsula of Gallipoli in the Ottoman Empire (now modern-day Turkey), where they take part in the Gallipoli Campaign. It is directed by Peter Weir and stars **Mel Gibson**. There are 80 free tickets for the screening which you can pick up in Hayle Heritage Centre or by emailing [laura@harveysfoundrytrust.org](mailto:laura@harveysfoundrytrust.org) Tickets will be distributed on a first come first served basis, the film has a PG rating.

\*

## 'Ship Building returns to Hayle'



It has been some six decades, or thereabouts, since such activity has been seen on South Quay, namely the construction of the S.S. ASDA. This massive ship will be able to carry cargo never before imagined by the townsfolk of Hayle. The work carried out to enable the construction of the cargo ship has been going on for the last year or so, and has involved the repair of the harbour walls, recycling of all the waste on the site and raising the ground level a metre against possible future flooding. No expense is being spared and it is thought that the ship will be plated in brass as against the traditional iron used in times gone by. The use of glass will be

## The Sleepy Hollow

Your Alternative Gothic Gift Shop

Family-run Gothic Gift Shop

Selling a wide range of Gothic gifts,  
candles, incense, clothes and more

Incorporating:

Sleepy Hollow Herbals,

Medicinal & magical herbs,

Tissaries, and

Hand-blended incense and oils.

Visit our shop at Unit 3 - Pratts Market,  
Chapel Terrace, Hayle TR27 4AB

07747 078274

[www.thesleepyhollow.vpweb.co.uk](http://www.thesleepyhollow.vpweb.co.uk)

extensive affording the passengers and crew a good view of Penpol Terrace. Likewise the view the residents and shoppers on the Terrace have of this exceptional feat of engineering. Mr Brunel would indeed have been very proud to be part of this project. (Might well have given them some good advice.) The ship will be sailing for 24 hours a day and will carry a full range of goods from alcohol, produce, clothing, dairy and meat to everything else a modern family may need and is larger than originally anticipated. We are looking forward to the launch date which could be as soon as Christmas but this could not be confirmed by the captain and in fact due to the economic climate, the S.S. ASDA will now not put to sea at all and will remain on the harbour as a permanent icon to the industry. The cargo will be traded and replenished regularly much to the delight of many in Hayle. (S.M.T)

**BIZ AND BYTES**  
**07974 647524    01736 755971**  
If you require computer assistance, either training or to resolve a problem then give us a call. Visits arranged to suit you.  
Looking after the home user and small business.  
**WEBSITES • BROADBAND • TRAINING •  
COMPUTER SUPPLY • TYPING**  
 [www.bizandbytes.co.uk](http://www.bizandbytes.co.uk)   
[enquiries@bizandbytes.co.uk](mailto:enquiries@bizandbytes.co.uk)

### WHO loves ya baby.

Great news for Hayle as Unesco has decided that we will keep our World Heritage site status for the harbour. The status was in doubt due to the supermarket development but it seems Cornwall Council have successfully argued its case that the supermarket pays the way for repairs to the quay walls, sluicing and other works that add up to substantial conservation gains.

**JC ELECTRICAL**  
Your complete 24 hour Electrical Service  
**Rewires • New Build • Lighting •  
Showers • Extra Sockets • Heating**  
City & Guilds Qualified (Tests to BS7671)  
Part P registered  
Prompt and reliable friendly service  
Free estimates and all work guaranteed

---

**Office: 01736 754543**  
**Mobile: 07739 577549**

# Unto the Breach



Work has finally started on the harbour wall that collapsed many years back. The huge granite blocks, which were saved from the rubble, are being put in place using a mechanical digger with a grab. How these were manhandled in the early days is hard to imagine and must have been very time consuming and dangerous. Work is regulated by the tide times, although as the wall gets higher more time is available. This is where the footbridge will be crossing over to Penpol Terrace which will be a boon to everyone, creating a connection to King Georges walk and the beaches. It must be said that regardless of residents views on the supermarket positioning, the contractors have done a brilliant job in recycling, noise reduction and causing a minimum of disruption. The completion of the wall will be another chapter in the long history of Hayle closed and welcomed by all.

*My definition of an intellectual is someone who can listen to the William Tell Overture without thinking of the Lone Ranger.' (Billy Connolly)*

# PAUL SHERRIS

Hayle's only  
local family owned  
**FUNERAL  
DIRECTOR**  
Private Chapel of Rest  
Pre-Payment Plans  
available  
West Terrace, Hayle.  
TR27 4JS.  
01736 753969  
Day or night

## YOUR OLD TAPES ONTO CD



**YOUR OLD CASSETTE,  
REEL TO REEL TAPES,  
OR 33/45/78 RPM RECORDS  
ALL SAFELY TRANSFERRED  
ONTO CD.**

Your precious memories saved forever.  
Your own photos, information and dedications  
can be included on the CD/DVD cover.

Also now : old VHS video tapes  
and Photos all onto DVD.

Digital Recording for Singers and Musicians  
Songwriters, Poets, Story Tellers, etc.  
Also Musical Backing Tracks provided etc.

Contact: Steve Nunn. Telephone 01209 719481  
[www.cornmillstudio.co.uk](http://www.cornmillstudio.co.uk)  
Email: [cornmillstudio@aol.com](mailto:cornmillstudio@aol.com)

## Hidden Words Quiz 116

By Cleverclogs

This time we are looking for female film stars. e.g. GRAB LEs before he falls in. Answer: Grable (Betty)

1. I think I like these sweets – I'll try another one!
2. Please stay, Lorna. Stay for tea, we don't see enough of you.
3. You really look good in that tartan dress. It shows off your ancestry.
4. I'm pretty full Ma! No second helpings for me today.

5. Our neighbour's tree prevents the sun shining on that part of the garden.

6. You hear of cod roes, herring roes – but never salmon roes. I wonder why.

7. They met at the reception when Angela married Martin. Do you remember?

8. Stick to the system please we've got to stay organised.

9. This is really painful – it just throbs on and on.

10. With all this trouble going on it

# St Erth & Hayle Cars



**4 - 8 - 16 Seat Vehicles.  
8 Seat Party Buses.  
Polite, Friendly Staff.**

**Local Trips  
Sea & Airport Transfers  
Tours & Much more!**

**01736 754000 or 01736 754040**

**[www.sterthandhaylecars.co.uk](http://www.sterthandhaylecars.co.uk)  
[info@sterthandhaylecars.co.uk](mailto:info@sterthandhaylecars.co.uk)**

now alters everything.

11. My twin Gerald feels every little bump I get!

12. A splash of vinegar landed in my eye – it was so sore.

13. I suppose we average out five to six servings per match.

14. I've never seen so many swans on Helston lake. Someone must be feeding them well.

15. Describe him? He's very stand-offish, erratic, surly and eccentric.

*Answers to quiz in issue 115*

- 1. Pitt            2. Gladstone    3. Disraeli
- 4. Heath        5. Churchill     6. Eden
- 7. Thatcher    8. Peel           9. Cecil
- 10. Baldwin    11. Home        12. Grey
- 13. Grafton    14. North        15. Major

The winner, picked by randomly computer generated number was:

**Sue Colliver of Hayle.**

To win a prize voucher worth £20 to be spent with any of our advertisers send your answers along with your contact details to [editor@haylepump.org](mailto:editor@haylepump.org) or any of the drop-off points on page 2. Extra prize for adding all their first names too!

**Closing date September 13**



**THE CORNUBIA INN**  
**H A Y L E**  
 35 Fore Street, Hayle 01736 753351  
 FOOD SERVED ALL DAY  
 LOCAL CORNISH ALES  
 FULLY STOCKED BAR  
 LOOSE LEAF TEAS & GREAT COFFEE  
 FULL SPORTS COVERAGE WITH THREE  
 LARGER HD TV SCREENS  
 LIVE ENTERTAINMENT  
 FAMILIES WELCOME, DOG FRIENDLY  
 OUTSIDE DRINKING AREA  
 CUSTOMER PARKING  
 SPECIAL REQUIREMENTS BY  
 ARRANGEMENT  
 info@cornubiainnhayle.co.uk

**August 23rd, 24th & 25th HOG ROAST AND CIDER FESTIVAL at the CORNUBIA INN**



**Solo Building Supplies Hayle branch OFFICIAL OPEN DAY is on Friday 12th September at Guildford Road Industrial Estate TR27 4QZ. There**

**will be lots of FREE goodies from our suppliers plus Win a weekend trip to Paris or Venice for 2 people & a brand new HD Slate7 high definition tablet . There will be plenty of FREE food and other refreshments available throughout the day.**



## Hayle in Bloom

The last 2 months have been quite hectic for Hayle in Bloom.

We've had an

Exhibition in the Phillack Church Hall. This was a wonderful event that showcased the work that Hayle in Bloom had done over the last 12 years. We even had photos showing Hayle in Blooming good style as far back as 1992, and the Archive had a display with all of Hayle's wildlife. Bowmer and Kirkland (Asda, South Quay development), served refreshments for us too. We held a Blooming Bee Friendly day in the Passmore Edwards Institute. This was really well attended. There were signs to design, bee hotels to make, free plants given away as well as seeds, and information on bees. We will continue with the project after the summer, so look out for another event coming soon. Our Celebration day on King George V Memorial Walk was brilliant. The sun shone and the crowds came out. Everyone had a great time. The numerous charity stalls raised much needed funds for their causes, and the businesses drummed up some more trade. The events were amazing. Bodriggy Academy choir were superb, as was the Savvy Dancers from Penpol School, and who could forget the Cornish Wurzells, (thanks



*HYDRO BATH                      BLOW DRY*  
*BRUSHING                        NAIL CARE*  
*EAR/EYE CARE    FLEA TREATMENT*  
*DEODORIZE                        CLIPPING.*  
*ALL NATURAL PRODUCTS.*

*PH 07903 042950*

*Lesley 01736 850971*

*E-mail lesleyandkeith@msn.com*

*Cabinetmakers & Joiners.*  
**JOHN  
ANDREWS**  
*Traditional Bespoke Woodwork*

**Windows, Doors and Staircases**  
**Boxframe Window Repairs**  
**New Sash Cords and Axle Pulleys**

**Entrance Gates and Gate Posts**  
**Furniture Repairs**

**www.johnandrewsjoinery.co.uk**

**Mob: 0776 534 1616**

**Tel: 01736 741 064**

Robin for funding this for us). Thanks to the Hayle Gig Club, Surf Life Saving Club, and the RNLI for all the water based events. Lots of people, and businesses made this day possible. Thanks to you all!

As I'm writing this, our judging day is tomorrow. In preparation we've had numerous working parties, and lots of planting and weeding. Our volunteers do all of this just to keep Hayle looking clean, tidy, and beautiful. This is an all year thing. Come rain or shine, snow or hail, we are out there trying to keep Hayle looking good. This year, to maintain a standard, we have had to do so much more because of the cut backs at Cornwall Council. However without more volunteers and greater funding we won't be able to keep this up next year. All funds we do raise go towards plants, watering, compost, paint, and food for the fish in the ponds on King George V Memorial Walk. **We need your help! Volunteers are warmly welcomed.** You can contact me by phone on 07788707018 or 01736754787 [annemarie73@gmail.com](mailto:annemarie73@gmail.com)  
*Anne-Marie Rance, Chairman*

\*

*Doctor, Doctor I've had tummy ache since I ate three crabs yesterday. Did they smell bad when you took them out of their shells? What do you mean "took them out of their shells!"*



**THINKING OF MOVING?**

We deliver a fresh, passionate and personal approach to selling your property.

Why not contact us for a free market appraisal?

Call on:  
01736 756681

[info@abodepropertyagents.co.uk](mailto:info@abodepropertyagents.co.uk)  
[www.abodepropertyagents.co.uk](http://www.abodepropertyagents.co.uk)



**HAYLE DAY CARE CENTRE**  
**Commercial Road, Hayle**

An affordable day care facility for the elderly of Hayle, St Ives and district

Transport ▪ Freshly cooked meals

Also includes bathing and hairdressing  
Therapy and lively social interaction

Always a friendly welcome

**Call 01736 755000**

# CLUB LISTINGS

**Hayle in Bloom.** Last Monday of the month, except for Aug & Dec. Held at Passmore Edwards Institute at 7pm  
[www.hayleinbloom.org.uk](http://www.hayleinbloom.org.uk)

## **Hayle Community Archive.**

Open Tuesday & Thursday 10 a.m. – 1p.m.:Tel 01736 753962, email:

[haylearchive@haylearchive.org.uk](mailto:haylearchive@haylearchive.org.uk)

Facebook: Hayle Community Archive.

Twitter:@hayle archive

## **Hayle Darby and Joan Club.**

Fortnightly on Fridays at 2:30 pm.  
Methodist Church Hall. Tel. 01736 711134

## **Hayle & District Bowling Club.**

10am every Sunday. Short Mat bowling indoors during winter 01736 753565  
St Ives and Hayle Community Choir.  
Tuesdays, 2pm St Anta Church Hall, Carbis Bay. All welcome

**Hayle Film Club.** Films shown on the 2<sup>nd</sup> Saturday of every month at 7.30 p.m. at The Passmore Edwards Institute. Ph Donna 01736 753184. Check on [www.haylefilmclub.org.uk](http://www.haylefilmclub.org.uk)

**Hayle Flower Club.** 4th Wednesday of the month 7.30pm, Hayle Daycare Centre in the conservatory Tel: 01736 793338

## **Hayle Harbour Users Association.**

First Monday of each month, 7.30pm, Royal Standard Pub. R.Lello 01736 757632.

**Hayle Judo Kwai** meeting in Unit 7 in the Rospeath Industrial estate, Crowlas. Just off of the A30. Tues & Thurs. Sensei Richard 01736 740723 or Karen Deacon 07792099979

**Hayle Library Reading Group.** 2.00pm first Wednesday of each month. Free. Contact Hayle Library.

**Hayle Line Dancing Club.** Every Mon. at Hayle Methodist Church 7.30–9.30pm Adults £3, Children £1 (includes light refreshment). Car parking available. Tel 01736 752610.

**Hayle & District Lions Club.** 2nd and 4th Tuesday of every month, 7.30pm at Passmore Edwards Institute. Tel. Mel George 01736 756484

**Hayle Model Boat Club.** Wednesday evenings 7-9pm & Sunday mornings 10-12 noon, meeting at green chalet by Hayle outdoor swimming pool. Tel: 01736 755516, or Les on 01736 754254

**Hayle Meanderers** Every Wed.10.30am Commercial Road car park. Free, + contribution to car share. Tel Joan Smith 01736 793631

**Hayle Old Cornwall Society.** First Friday of each month. Oct. to May. Passmore Edwards Institute,7.30pm.. Maria Crosser, 01736-755072

**Hayle Pilot Gig Rowing Club.** Rowing out of Hayle Harbour most Tuesdays and Thursday evenings Tel. 01736 754254 [www.haylegigclub.com](http://www.haylegigclub.com)

**Hayle Local Vocalz** - a 65 strong mixed voice adult choir. Mondays, 8pm, St Elwyn's Church, Hayle. 07950 585787

**Praze Hayle Choir.** Every Tues.7.30pm. Methodist Hall Don Metcalf 01736 757720

**Hayle Model Railway Club & Duchy Railroaders** Club Rooms Unit 5, Praze Business Park, Praze-an-Beeble. Mon. & Thurs. 7pm – 9.30pm. Bob Mims 01736 757910 [bobmims@live.co.uk](mailto:bobmims@live.co.uk)

**Hayle Rotary Club.** Monday 7 pm except Bank Holidays White Hart Hotel, David Raymer 01736 755029 or Trevor Osborne 01736 793596

**The Rotary Club of St Ives Bay**  
New Rotary Club for men & women  
meeting on Tuesdays at the Carbis Bay  
Hotel 6.30 for 6.45pm. Contact:  
[secretary@stivesbayrotary.co.uk](mailto:secretary@stivesbayrotary.co.uk)

**Hayle RNLI** meets Mar to Nov at  
7.30pm 2nd WED of the month at Unit 5,  
Hayle Ind Park. Tel: 01736 753567  
**Save our Sand.** 2nd Tuesday of each  
month, 7.30pm at the Passmore  
Edwards Institute. Hayle

**Heyl St Piran Singers.** Every Thursday  
at Hayle Methodist Church Hall at 7.30  
to 9.30pm. Ann Birch 01736 752335

**Royal British Legion.** Passmore  
Edwards Institute. Every Mon. Wed. & Fri  
evening, and Sat. afternoon.  
Tel:07743276412 Mr. John Bawden.

**St Erth Concert Band**  
Rehearsals Tues 7.30 to 9.30pm in  
Methodist Church Hall  
G.Lawry 01736 755512  
[www.sterthconcertband.co.uk](http://www.sterthconcertband.co.uk)

**St Erth Friendship Club for the over  
60s.** Tuesdays 2pm – 4pm St Erth  
School Hall £1.50 per session.  
01736 850758

**Hayle Surf Life Saving Club**  
Riviere Towans Hayle TR27 5AF  
Captain: Dave Parker 755303

**Table Tennis for Fun,** every Friday at  
2pm at Hayle Methodist Church Hall,  
Chapel Hill, Hayle. Only £2 per session.  
Bats, balls and squash provided. John  
Nunn 01736 759686

**Heyl Town Band.** Rehearsals  
Tuesdays & Thursdays 7:30pm –  
9:30pm, Junior band rehearsals  
Thursdays 6:pm – 7:00pm

**Hayle Twinning Association.** 2nd Mon.  
of each month at Hayle Community  
Centre. 7.15pm in Room 7. Mike



**MOUNTAIN - ROAD - BMX SPECIALIST**

**Bicycle Sales and Repairs**

**Tel: 01736 753825**

36 Penpol Terrace, Hayle TR27 4BQ  
[www.haylecycles.com](http://www.haylecycles.com)

Stuckey 01736 753755,

**Hayle Penwith U3A** Hayle Day Care  
Centre Social meetings 2<sup>nd</sup> & 3<sup>rd</sup> Thurs.  
2pm. Art, History, Writing, Play reading,  
Current Affairs, Luncheon Club.  
Chairman Mel George 756484 Secretary  
Tess Hulland 759658

**W.I. Hayle** 1st Tues. of the month,  
7.30pm, Hayle Daycare Centre  
Tel. 01736 754089

**Phillack Church Hall.** Bingo: 1<sup>st</sup> Friday,  
7.p.m. Church Lunch: 2<sup>nd</sup> Saturday  
12.15Quiz : last Saturday, 7.30 p.m.  
Phillack Parish Church 9.15 am  
services every Sunday (except 5<sup>th</sup>)  
preceded by beautiful bell ringing.

**Laudate Chamber Choir-** a 40 strong  
church/cathedral style chamber choir  
Tuesdays 8pm, St Elwyn's Church,  
Hayle: Tel 07950 585787

**St Ives and Hayle Community Choir**  
Tuesdays 2pm to 3.30pm at St Anta  
Church Hall, Carbis Bay 07950 585787

*To appear on this page free of  
charge drop in details to:*

*Passmore Edwards Institute*

*Angove Sports*

*Bean Belt*

*Or email [editor@haylepump.org.uk](mailto:editor@haylepump.org.uk)*

## Goodbye and Hello.

After many years John Jansen has stepped down as treasurer for The Hayle Pump. We would like to thank him for his skill and patience in volunteering for this task.

**Thank you John.**

We now have the task of finding new volunteers to help with the Hayle Pump. If you can spare a few hours every other month to proof read, make up adverts, chase payments, write copy or deliver copies then please contact us. We all love the Pump and are desperate to continue producing it but we need more hands.. [editor@haylepump.org.uk](mailto:editor@haylepump.org.uk)

## **Keeping Fit Can Be Fun!!**

**Mon 10 am Circuit  
training for over 50s**

**Thur 10am Extend  
Movement to music over  
60s at the Passmore  
Edwards Institute**

**Wed 2pm at  
Leedstown Village  
Hall  
Start the week feeling  
good!**

**Sylvia 01736 757560**

**X**EXTEND



**Webb & Philp Ltd**  
electrical contractors



**17th**  
BS7671 edition

**All aspects of Electrical  
work undertaken**

Free Estimates, No Job Too Small  
Prompt, Reliable, Fully Qualified, Est. 1972

- ✓ Re-Wires
- ✓ Security
- ✓ Showers
- ✓ New Build
- ✓ Testing
- ✓ Maintenance
- ✓ PAT Testing
- ✓ Extra Sockets  
& Lights

[www.webbandphilp.co.uk](http://www.webbandphilp.co.uk)

Telephone/Facsimile 01736 753651 Mobile: 07419 376882

email: [electricians@webbandphilp.co.uk](mailto:electricians@webbandphilp.co.uk)

## ADVERTISERS INDEX

1 <sup>st</sup> Choice Paving	2
Abode	39
All Aerials	19
<b>Angove Sports</b>	21
Barton Print	6
Berwicks Estate	9
Biz & Bytes	34
<b>Blewetts Toys</b>	3
<b>Café Riviere</b>	9
Chimney Sweep	19
Cliffords Plumbers	16
Computer Coach	15
Cornmill Studios	35
Cornubia Inn	37
Cornwall Chiropractic	32
Cornwall Councillors	14
Country Skittles	5
Daisy Potter	31
Dapper Dogs	38
David N'jie	29
Des Button	12
<b>Farm Shop</b>	21
<b>FlowerTime</b>	44
Foundry Fruit	30
<b>Gallery Café</b>	4
Graham Smith	25
Guitar Lessons	20
Gwynn's Yoga	24
Harvey Rail	29
Hayle Cycles	41
Hayle Day Care	39
Heidi Bows	3
J.C. Electric	34

John Andrews	38
Kernow Auto Clean	11
Kleeneze	14
Ladies Room	22
Lavenders Blue	20
Lindsays Dogs	25
Malcolm Swinger	33
Mobile Foot	27
Neil Shepherd	10
Nick Farrar	43
PDH Builders	15
PG Franklin	26
Painter & Décor	10
Paradise Park	28
Passmore Edwards	7
Paul Sherris	35
Philips Home	30
Philps Pasties	8
Plantech	18
Rick Harvey	24
Rosewarne Manor	6
Sleepy Hollow	33
St Erth Cars	36
Sue Seabury	18
Sylvia's Exercise	42
TC Tech	13
TJ Carpets	31
TJ Barbers	22
TP Wills	11
Transformations	17
Webb & Philp	42
Winns Funeral	26
(Pick up the Pump at places marked in <b>bold</b> .)	

Tel: 01736 - 757818  
Mob: 0779 263 2635

# Nick Farrar

## Property Maintenance

Windows-conservatories - Kitchens - Carpentry - Fibre Glass Flat Roofs

