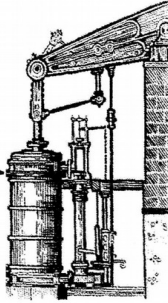


Dec 2014  
To  
Jan 2015



# HAYLE PUMP NEWSLETTER



Spread the word of Christmas time  
Let joy be in your eyes  
Hiding greyness in the sky  
Making spirits rise  
Find a strength in loving thoughts  
Overcoming pain  
See the sparkle coming through  
In each cold spat of rain  
Know the warmth you will receive  
When passing on a gift  
Realise the pleasure felt  
With each sad heart you lift  
Hear the bells ring loud and clear  
Filling hearts with cheer  
Another year has come and passed  
Christmas time is here.

*(N. Bodilly)*

# Hayle Pump Newsletter

Passmore Edwards Institute, 13-15 Hayle Terrace TR27 4BU

The Pump is produced by volunteers as a community newsletter.

**NB** All articles accepted are not necessarily the view of the editorial team.

View online at [www.haylepump.org.uk](http://www.haylepump.org.uk)

**Editor** Rich Morgan

[editor@haylepump.org.uk](mailto:editor@haylepump.org.uk)

**Treasurer** Sarah Turk

[treasurer@haylepump.org.uk](mailto:treasurer@haylepump.org.uk)

**Advertising** Sarah & Jeff Turk

[ads@haylepump.org.uk](mailto:ads@haylepump.org.uk)

Phone 01736 752319

**Web site** John Bennett

[webmaster@haylepump.org.uk](mailto:webmaster@haylepump.org.uk)

**Team** Samuel Marsden

Mary Cambridge, Liz Norbury

## Subscriptions

For 6 issues by post, please send a cheque or postal order for £ 3.50 made out to Hayle Pump Newsletter to:

Hayle Pump Subscriptions

35 Penpol Terrace

Hayle Tr27 4BQ

Please give *your* name as well as delivery name and address

**Send your adverts to**  
**[ads@haylepump.org.uk](mailto:ads@haylepump.org.uk)**  
**or drop off points**

**Send any articles or copy to:**  
**[editor@haylepump.org.uk](mailto:editor@haylepump.org.uk)**

or drop off at  
Angove Sports  
Bean Belt  
Passmore Edwards Institute

Display Advertising Costs		
<b>1/8</b>	63 x 47.5	<b>£10</b>
<b>1/4</b>	63 x 95	<b>£15</b>
<b>1/2</b>	130 x 95	<b>£30</b>
<b>Full</b>	190 x 130	<b>£90</b>

**NEXT DEADLINE is**  
**13<sup>th</sup> JANUARY**

*The pump is run by volunteers and relies on our advertisers and your input. If you would like to help in any way, please contact the editor or one of the team*

## 1ST CHOICE PAVING

Drives, Paths, Patios, Landscaping.

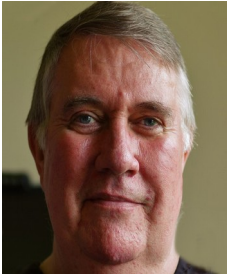


01736 753087 07969 960128

[www.1stchoicepaving.com](http://www.1stchoicepaving.com)

Clifton Terrace, Hayle.

The Hayle Pump would like to wish all its readers, advertisers and contributors, a very Merry Christmas and a Happy New Year.



**Mayors Message**  
*What a year!*

So much that has been hoped for and planned for Hayle has come together.

Most of the harbour has been repaired to a high standard; North, South, East and Carnsew quays are now good, and ready for further development, the sluice gates are being sorted for a new sluicing regime from Carnsew, the new ASDA supermarket should be open, trading and employing

local people as you read this. Foundry viaduct is being extensively repaired, and the cherished listed North Quay swing bridge should be revealed after its repair and refurbishment. Once viaduct repairs are complete, Isis Gardens will be re-instated with a pedestrian way linking the new South Quay promenade with Foundry shopping and business area, with a bridge across Penpol Creek to follow in the first part of 2015. The new Fire Station, police and ambulance shared premises is well under way after Hayle has been lobbying for it since World War 2. Big shopping proposals want to develop in the Marsh Lane area of Hayle and Angarrack and will probably rumble well into the New Year, while we have to weigh up the pros and cons of large housing developments proposed for Foundry and Trevassack

**The Gallery Coffee Bar**  
Warm and welcoming with comfy indoor & outdoor seating

Pop in and see us for  
Great Coffee  
Breakfast rolls  
Lunches  
Luxury Hot Chocolate  
Bacon rolls served all day  
Soups, jacket potatoes and panninis  
*We sell a large range of beautiful and affordable pre-loved and new, silver and gold jewellery. Ideal for Christmas .*  
*We wish everyone a Merry Xmas and a very Happy New Year*



**Dogs are welcome**  
1 Chapel Terrace, Hayle.  
( by viaduct ) 01736 756829

**CHRISTMAS TREES**  
**15ft — 25ft**  
**NORWEGIAN**  
**SPRUCE BLUE.**  
**LOCALLY GROWN IN**  
**LEEDSTOWN.**  
**SELECT YOUR OWN**  
**BEFORE CUTTING.**  
**CONTACT**  
**07809 489863**  
**MERRY CHRISTMAS TO ALL**

areas; will they all happen?  
Hayle Neighbourhood Plan is progressing with some of the councillors and volunteers from the public thrashing out ideas for Hayle's tailor made planning policies for the future, public welcome to meetings and to contribute – Look out for further consultations leading to a referendum.

Our local schools report great results, I am sad to see BOTH primary headmasters moving on, Mr May and Mr Hodson who will be remembered by generations of Hayle's young people, thanks and well done gentlemen.

Our many clubs, groups, churches and societies have kept the town spinning along, providing activity, company, challenge and reassurance to a wide cross section of our community, no age group is left out. This is the Christmas and New Year Pump so let's welcome the positive feelings this season can generate. REMEMBER THE FOODBANK to help those in hardship, spare some time to experience some of the various religious services that are welcoming people, whatever your beliefs, and when you spend TRY to spend in the local shops and businesses that need all our support.

Be good to each other, stay safe, Merry

Christmas and a Happy New Year.  
Graham Coad, Mayor.

## GUITAR LESSONS



Acoustic, Electric,  
Bass & Banjo

All ages and abilities  
All styles folk/rock/pop

Phone 01736 753709  
Mobile 07866 372715

## Hayle & District Lions

Here is the Christmas 2014 schedule for Hayle & District Lions. All the events will raise money for their Charity Account which is used to help both individuals and organisations in the Hayle area and surrounding district. The Lions together with Father Christmas in his sleigh will be welcoming all customers at the following local supermarkets:

**Lidl's in Hayle on Saturday 13th December**

**Tesco's, Carbis Bay on Sunday 14th December**

**Coop in Hayle on Wednesday 24th December**

The schedule for Father Christmas in his sleigh travelling around the town of Hayle is as follows:

**Trelissick area on Monday 15th Dec between 6:00pm & 8:00pm**

**Phillack & Loggans on Wednesday 17th Dec between 6:00pm & 8:00pm**

**Queensway area on Friday 19th Dec between 6:00pm & 8:00pm**

**Bodriggy estate on Monday 22nd Dec between 6:00pm & 8:00pm**

**Hayle CYCLES**

**MOUNTAIN - ROAD - BMX SPECIALIST**

**Bicycle Sales and Repairs**

**Tel: 01736 753825**

36 Penpol Terrace, Hayle TR27 4BQ  
[www.haylecycles.com](http://www.haylecycles.com)

**On Sunday 14th December** from 6:00pm to 8:00pm at St Elwyns Church in Hayle, the Hayle Lions are hosting a Carol Concert. Bodriggy Academy Children's Choir and the Kruners from St Ives will be entertaining the audience and the evening will finish with communal singing with everyone welcome to join in. There will be free tea/coffee/biscuits supplied during the interval. The cost for this evening is £5 for adults and £2 for children aged between 5 and 15 and no charge for under 5's. It will be a very entertaining evening full of Christmas Carols, so come along and join in the fun. There will also be a Christmas Raffle in some of the Public Houses in Hayle. Tickets are £1 each and the winner in each of the participating pubs will receive a large hamper full of Christmas goodies. Hayle Lions would like to thank all the residents of Hayle for their continuing support of Lions activities. Without them the Lions would not be able to fund the good work they do in the local community. Finally Hayle Lions would like to wish all the readers of Hayle Pump a very happy Christmas and a prosperous new year.

### ***Millpond View***

is an exciting new service opened in Hayle to provide day time activities and respite for adults with a learning disability. The day time activities and respite will be very person centred, the Millpond View team will support individuals achieve aims and objectives agreed both by the individual and their social worker. The service will be inspirational and

aspirational. Millpond View wants to support individuals to develop key skills to enable them to more actively access their own communities. Each individual will have an active part in designing their service, and from the day they arrive the team will be working with them towards the day they leave. The staff aim to give people the support to develop basic key skills which will enable them to be actively involved in their local community, the degree of independence will of course depend on the individual. Millpond View are keen to work with local services and businesses to ensure they can offer a diverse range of opportunities to individuals, they are already working with Cornwall Volunteer Services, DWP, Social Services, Health and



**Millpond View**  
**Daytime Activities and**  
**Respite Centre.**  
**11 Millpond Avenue**  
**Hayle**  
**TR27 4HX**  
**01736 757176**  
**[millpondview@btconnect.com](mailto:millpondview@btconnect.com)**

Time 4 Change. If you would like to know more, or would like to chat further and perhaps have a look around please contact Sharon Wilkinson either via e-mail or on the number above. You can also follow us on Facebook, just search Millpond View.

**WIN A CHRISTMAS BOX OF GOODIES**  
courtesy of  
**THE FARM SHOP.**


To win a box of fruit, veg and other goodies answer the following question:

What green vegetable is traditionally eaten with Christmas dinner.

- 1.Green Beans
2. Okra
- 3.Sprouts

To enter write your answer together with your contact details and drop into The Farm Shop before 20<sup>th</sup> December. The winner will be notified so that they can pick up their prize in time for Christmas.

*Daisy Potter Vintage Clothes*  
Vintage designer clothes  
Jewellery  
Accessories  
Collectables



Unit 7-8 Foundry Shopping Village  
Hayle, Cornwall, TR27 4AB  
01736 754836  
Facebook: Daisy Potter Vintage Clothes

**HAYLE CRICKET CLUB**

Hayle Cricket Club would like to thank The Cornish Arms for hosting their Harvest Auction in September. The magnificent sum of £1,000 for Club funds was raised - much needed.

Many thanks to everyone who helped. *(M Trevorrow)*

**T** Come to **O**  
**BLEWETTS**  
**TOY SHOP**  
19 Penpol Terrace, Hayle  
TR27 4BQ  
**Y** 01736 753012 **S**



**The Farm Shop**  
31 Penpol Terrace, Hayle  
TR27 4BQ  
Open 6 days a week  
8am-5pm  
**For all your local produce.**  
Fruit, vegetables, plants,  
flowers, free range eggs and  
Cornish new potatoes.  
NOW IN  
Christmas wreaths  
Homemade pickled onions  
Christmas flowers.  
We wish all our customers a Merry  
Xmas and a Happy New Year

## Rotary Club of Hayle

The club continues to support local community groups and this time Hayle Town Band received funding to purchase music equipment that would benefit the younger members. Two Rotarians attended a training session on cardiac arrest and the use of a defibrillator. Members also supported the Royal British Legion poppy appeal and attended the service at the War Memorial. Looking ahead, we are planning to do the Rotary Public Speaking competition, 'Youth Speaks', on January 23<sup>rd</sup> for teams from local primary schools and organising a Beetle Drive on February 13<sup>th</sup> to raise funds for overseas emergency boxes, both at Hayle Day Care Centre. We are looking for support at these events.

Rotary exists to help with the needs of the community. If any local group or individual needs a helping hand, will someone let us know.

May we wish you a peaceful and enjoyable Christmas and hope that 2015 will bring joy and happiness.

For more information about Rotary activities, please contact David Raymer on 755029



Film lovers are in for a treat over the next few months when the Hayle Film Club presents a fine mix of the best movies on recent release.

On Saturday, 13 December, at 7.30pm, it's the epic ode to growing up, **BOYHOOD**, directed by Richard

PASSMORE EDWARDS  
INSTITUTE



## MEETING ROOMS FOR HIRE

Hayle's Village Hall  
has rooms for 2 to 60+  
Children's Parties  
and Catering

For more information:

[WWW.HAYLE-PEI.ORG.UK](http://WWW.HAYLE-PEI.ORG.UK)  
[bookings@hayle-pei.org.uk](mailto:bookings@hayle-pei.org.uk)

Or call: 07784-377576

13-15 Hayle Terrace, Hayle, TR27 4BU  
Charity Number 268429



PAINTER

&

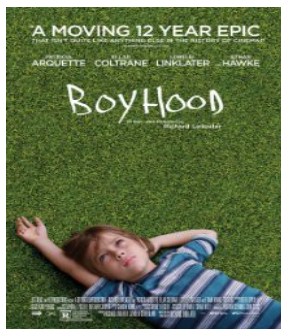
DECORATOR

NO JOB TOO SMALL.

CALL 01736 601385

References and free quotes

or 07985 454481



Linklater (best known for his **BEFORE** trilogy). Twelve years in the making, a child called Mason literally grows up on screen. Utterly

compelling and sure to be nominated for loads of awards. To be followed by our now-traditional Christmas refreshments. (NOTE: The running time of this film is 165 minutes. As we're still awaiting funding for new, comfier chairs, feel free to bring a cushion!) The new winter-spring season will include four Saturday-Sunday double screenings, beginning on Saturday, 10 January,

with the superb Polish-language drama **IDA**, about an orphaned novice nun who, upon learning her parents were Jewish and killed by the Nazis, sets about finding their graves. A starkly beautiful film that has earned praise across the globe. The next day, Sunday, 11 January, at 2.30pm, it's a complete change of pace with **PRIDE**, the hugely popular comedy-drama of gay activists in a Welsh mining town who decide to collect money for the striking miners in 1984. The terrific cast includes Bill Nighy, Imelda Staunton and Dominic West. Future screenings will include the runaway thriller **GONE GIRL** and the poignant Japanese family drama **LIKE FATHER LIKE SON** (February), three superb British films -- Mike

**Pasties by Post**

'Pasties by post' is now available at Philp's Bakery. Use our courier service to have our Genuine Cornish Pasties delivered to your door.

Alternatively, you can send our pasties to relatives out of the county or to a member of the family at university.

by Philp's of Cornwall

Philp's Up Country

Pasties by Post

Contact us by:

Phone: 01736 753343  
or  
01736 755661  
Website: [philpsbakery.co.uk](http://philpsbakery.co.uk)

Leigh's **MR TURNER** and the quixotic drama **STILL LIFE** (March) plus the Alan Turing bio **THE IMITATION GAME** (April), and the intimate rock-and-roll portrait **JIMI: ALL IS BY MY SIDE** (April). More details on these in the next issue. Films are presented upstairs in the Passmore Edwards Institute; evening screenings are followed by free refreshments. Tickets are £5 (£4 for members), available by phone (01736 752319), at the Bean Belt on Penpol Terrace, or online [www.haylefilmclub.org.uk](http://www.haylefilmclub.org.uk). Tickets at the door are subject to availability. All are welcome!

(Donna Anton, Chair  
01736 753184 )

## H.T.P.



Here is a request for stories about H.T.P. from Phil Hosken, Chairman of the Trevithick Society, who is planning a book about the famous company that was once so much a part of the community in Hayle. He says: "A hundred years ago the names of Hosken, Trevithick & Polkinhorn of Loggan's Mill in Hayle would have been on the lips of every grown-up and many children in Cornwall.

## Transformations Cornwall

*Give your home a luxurious finish  
Create the style you desire  
Bespoke curtains, blinds and soft  
furnishings.*

*Handmade to a high standard  
Professional, friendly service*

*Elizabeth Gregg  
17 Penpol Road Hayle  
TR27 4AD*

**01736 752434**

[elizabeth@transformationscornwall.co.uk](mailto:elizabeth@transformationscornwall.co.uk)

[www.facebook.com/  
TransformationsCornwall](http://www.facebook.com/TransformationsCornwall)

## Berwicks

[www.berwicks.co](http://www.berwicks.co)

**Thinking of selling?**

**For a free no obligation  
market appraisal please  
call us on:**

**01736 759696.**

**A well established business  
with fantastic advertising  
coverage.**

**20 Foundry Square Hayle TR27 4HH**

**DWT (UK) Ltd**  
Property Solutions  
**CARPETS & FLOORS**

**COVERING ALL YOUR FLOORING SOLUTIONS!**

**SHOWROOM NOW OPEN IN HAYLE**

**10% DISCOUNT ON ALL ORDERS BEFORE END OF OCTOBER**

**FITTING SERVICE**  
*from our team of trained experts*

**SUPPLY ONLY**  
*for trade, or the keen DIYer*

**FREE DELIVERY**  
*within Cornwall, ask instore for details*

**PHONE 01736 740619**  
**EMAIL info@dwtfloors.co.uk**  
[www.dwtfloors.co.uk](http://www.dwtfloors.co.uk)  
**4 EAST QUAY, HAYLE, TR27 4BJ**  
**NEXT TO PHILPS PASTIES**

Proud stockists of

“They were more likely known simply as HTP but, as millers, seed merchants and bankers to the farming population, they employed and influenced many lives. The background to the company, its formation from the rivals in Foundry and Copperhouse, its spread throughout Cornwall and Devon and its ups and downs have never been fully told.

“For instance, in addition to the details of milling equipment and steam traction engines, there is the leat that still runs across Loggan’s Moor from Angarrack and all the personal stuff that went on in the families. Did you know that William Hosken’s daughter married John Rosewarne, a farmer at Nanpusker, and their daughter Janie married Sam Polkinhorn. William’s second nephew, also William, returned from South Africa to live the high life at Pulsack and Trevithick, lived and drank at Tolroy.

“While I have the original company ledgers, and we know about the small flour bags that were washed out and recycled as knickers during the war, a good, colourful story needs what can be recalled by the people of Hayle district.

“For example , I have recently come across Paul Phillips, the grandson of the HTP traction engine driver whose locomotive was famously photographed after it went through the railings on East Hill, Tuckingmill. This occurred while the tram track was being laid between Camborne and Redruth. I don’t expect that sort of excitement from

## ALEXANDER MCDONALD

GARDENING SERVICES,  
PRESSURE WASHING,  
GUTTER CLEARING,  
FASCIA BOARD CLEANING AND  
ALL THOSE LITTLE JOBS YOU  
KEEP PUTTING OFF.  
FREE ESTIMATES.

BIG ENOUGH TO COPE, BUT  
SMALL ENOUGH TO CARE

**Mob 07880 777591**

**Home 01736 753102**



every story, but each one will help to paint a picture of industrial and personal life in Hayle and, if you wish, your name will be included in the book.

“I look forward to hearing from anyone with a story to tell. Please contact me in the first instance at [marrack@btinternet.com](mailto:marrack@btinternet.com) or 01209 219715. You may have to leave a message. Thank you.”

### Foundry Fruit n Veg are

celebrating 15 months successful trading outside Foundry Shopping Village (Pratts Market) and would like to thank loyal customers old and new for supporting a local business. They not only stock fruit and local veg but herbs, spices, local honey, local eggs jams and chutneys and offer delivery within Hayle and surrounding areas. They have a lot of success with lovely fruit gift boxes that start at just £10. There is a free Christmas raffle ticket to all our customers that come in from Sat 22nd November and will be drawn on Sat 20th December. The prize will be a selection of fruit and Cornish goodies. Thank you. (Sara Nevitt)

*The four stages of life - You believe in Santa Claus - You don't believe in Santa Claus - You become Santa Claus - You look like Santa Claus*



Compliant with the IPW Code of Practice

TP  
wills & probate  
LIMITED

## Will Writers & Probate Practitioners

Wills, Trusts, Lasting Powers of Attorney, Care Fee Protection, Funeral Plans & Probate.

Free initial consultation with no obligation. Evening appointment available at your home.

*It is never too early to make a will but often too late. No will can cause emotional and financial problems. For a small investment you can write what you want in your will.*

Tel 01736 755125

Mob 07900 323939

email enquiries@tpwills.co.uk

18 Trelee Close Hayle TR27 4QB

[www.tpwills.co.uk](http://www.tpwills.co.uk)

## Kernow Auto Gleam

### Car Valeting Services

For Prices on Services

please contact

07788 459884 or

[harry@kernowautogleam.co.uk](mailto:harry@kernowautogleam.co.uk)

Services include  
Basic Hand Wash  
Wash and Vacuum  
Budget Vacuum  
Full Valet  
Interior Valet  
Exterior Valet



**Des Button**  
**SPRINGFIELD**  
**33 Clifton Terrace**  
**Hayle TR27 4BP**  
**ELECTRICAL**  
**SERVICES &**  
**SUPPLIES**  
**01736 753211**



**PART P**  
**REGISTERED**



## Café Riviere

Across Hayle's Jubilee Bridge

**Serving a variety of hot  
food, late breakfasts,  
drinks, ice-cream, cream  
teas and snacks.**

- *Indoor and outdoor seating.*
- *Take-away is available.*
- *Open all year.*
- *Next to the public open-air swim pool, sub-tropical gardens, promenade and nature reserve.*



**giving  
nature  
a home**

Our avian highlight recently has been a Lesser Yellowlegs from North America which arrived courtesy of Hurricane Gonzalo on 21 October and is still with us (at Copperhouse Creek) at the time of writing. We are lucky at Hayle to have hosted a good range of wader and wildfowl species from 'across the pond' over the years – due, of course, to our geographical position, with Hayle Estuary being the closest in the UK to North America. The 'legs' is in fact our seventh to be recorded on the reserve; by comparison, most British estuaries would struggle to claim even one or two. Not such good news, however, was a report from the Environment Agency of a huge influx of silt into Carnsew Pool discovered by one of their inspectors following the connection of the Pool to Carnsew Dock in Hayle harbour, as part of the new sluice works, after the breakthrough on 19 September. I visited the site the following week with Natural England, and it was clear the water in the Pool was very turbid, and all the seaweeds and rocks had been smothered with silt. In time, of course, the situation should settle down, but what effects this has had/will have on the intertidal invertebrates is unknown and a cause for concern. Hopefully, this won't be an ongoing issue, once the sluicing regime is up and running, as we all want to see any suspended

sediments being taken the other way, i.e. out into the Bay.



## **Little Monsters Wanted**

Monster Theatre and Mini Monsters are run by

Thornberry Theatre; an independent and local enterprise run by a local lady with over ten years experience in drama and teaching. Monster Theatre and Mini-monsters was developed to explore drama in a different way to some of the bigger theatre groups in Cornwall. With an emphasis on exploring theatre and devised performance the groups rely on the creativity of the students.

Mini-Monsters is for students aged 8-12 and explores drama with an emphasis on fun and creativity, We would love for more students to join us.

**Monster theatre youth company - Wednesdays 3:30-5:00pm**

**Mini monsters drama club Wednesdays 5:15-6:15pm**

Kat Loder.

# **Computer / Laptop Problems?**

I can restore your computer or laptop to full working order for a fantastic price

## **NO CALL OUT CHARGE**

Professional repairs and maintenance of full systems and networks

Call today for a FREE no obligation quotation

**PC REPAIRS • PC NEW BUILDS • PC REBUILDS •  
PC UPGRADES • PC TRAINING • DATA RECOVERY •  
NETWORK INSTALLATION & MAINTENANCE**

For a prompt and reliable service call Tim Cogher at TeeCee Tech today



**07730 283433**



**01736 850798**

All your favourite hard to find  
Homecare Health products and  
quirky gadgets.

## NOW ONLINE

[www.kleeneze.com/nickpincott](http://www.kleeneze.com/nickpincott)

This 88year old British catalogue  
company has joined the Web!  
Order online but still receive the  
friendly free delivery and pay on  
arrival, service from your local  
distributors.

*All online orders will receive a FREE  
mystery product sample!*

**PH 01736 850840 07957897270**

See you soon,  
Nick & Jan Pincott



## Council Corner December 2014/January 2015

### Devolution and Community Asset Update

Positive discussions are continuing with Cornwall Council with regard to the return of assets and devolution of services. Regular meetings have taken place to progress the issues surrounding the handing back of the management of the amenity and recreational areas in the town. The transfer of these sites will definitely take place in 2015. Cornwall Council has now agreed to fully repair and make good the Plantation Wall which runs adjacent to the B3301 and there is also a programme of works to bring all of the other sites up to the required standard for Hayle Town Council to take the sites back. All of the finances relating to the future maintenance are in place and now the Town Council has to consider whether or not it will employ staff direct or buy in the services to maintain these sites. There are potential TUPE implications which need serious consideration prior to making this decision.

### Major Planning Applications

The Council is particularly busy at this time looking at a number of significant and/or major planning applications. The first to be considered is the bridge over Penpol Creek that will link the new ASDA store to Penpol Terrace. Then it is anticipated that the Council will be considering the two applications



#### **NORTH WARD**

John Pollard  
[www.djpollard.co.uk](http://www.djpollard.co.uk)

**07967 272808**

### **CORNWALL COUNCILLORS FOR HAYLE**

Contact us directly  
or

Surgery held on 1<sup>st</sup> Saturday of Each Month  
at Hayle Library & One Stop Shop

**0300 1234 100**

#### **SOUTH WARD**

John Coombe

**01736 752831**







(Cranfords and Walkers Developments) for retail developments in the Marsh Lane area early in December prior to them going to the Cornwall Strategic Planning Committee on 18 December, when the final decisions is likely to be made. We are also in the early stages of studying the Linden Homes application for houses in the area at the back of Penpol School. We do not expect to deliberate this until the New Year but we will be guided by Cornwall Council. Please remember that members of the public are welcome to attend all meetings of the Council so keep an eye out on the noticeboards and on the website for updates regarding these and other applications. Applications may be viewed at both Hayle Library and the Town Council office or online at <http://www.cornwall.gov.uk/environment-and-planning/planning/online-planning-register/>.

**Budget and Precept** :It is that time of year when the Council sets the budgets and precept for the financial year 2015-2016. There is now so much to consider, due to ever increasing number of services that the Town Council provides, that several meetings are required to debate the financial implications for the services and facilities for the forthcoming year.

**CCTV**: We are working hard to resurrect the CCTV monitoring service in Hayle, following the withdrawal of financial support from Cornwall Council and the end of the previous transmission and maintenance contracts. Cornwall Council will still cover the cost of the

## MUSIC LESSONS

Piano, keyboard, organ, singing and theory of music.

-  Beginners to diploma level
-  Adults and children
-  Examinations or fun!
-  No group tuition whatsoever —strictly” one to one” basis.

NEIL SHEPHERD

Details 07950 585787

[www.neilshepherd.org.uk](http://www.neilshepherd.org.uk)



## Computer Coach

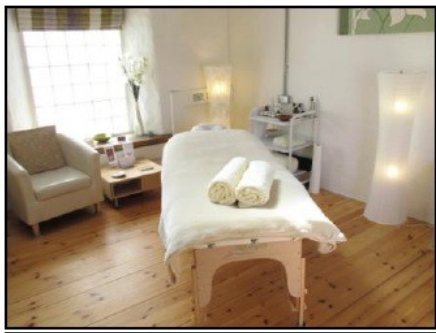
One to one support with using and maintaining your computer system

Comptia A+ Trained and CRB Certificate

Phone: 07929869545

[P.jacobs@talktalk.net](mailto:P.jacobs@talktalk.net)

**Natural & Organic Therapies**  
~ Clare Mungles ~



**Massage**  
**Hot Stone Massage**  
**Indian Head Massage**

**Organic Beauty Facials**  
**Body Brush/Scrubs**

**Reflexology**  
**Foot Pamper Treatments**

clare@naturalorganictherapies.co.uk  
www.naturalorganictherapies.co.uk

**077897 60387**  
**Appointment Only**

**\* Gift Vouchers available \***

West Stables, Foundry Farm  
Foundry Lane  
Hayle TR27 4HD

after that we are on our own. Hayle Town Council has worked with a number of local towns and Cornwall Council's CCTV Project Officer, David George, to secure new contracts and broker a new deal for the provision of a monitoring service. It is anticipated that the full CCTV service will be resumed by May 2015.

**Hayle Community Centre** If you are planning on holding any meetings, events, classes, parties or looking for regular office space this may be the venue for you! Space is available for regular sessions or one off bookings. Remember that the CAB, Link into Learning and others hold regular sessions and surgeries. Contact the Town Clerk's office for details of services and available space.

**Small Grants Available:** Hayle Town Council annually awards capital grants to local clubs and organisations. If your group is in need of new equipment, kit or requires funds to secure other sources of funding for larger projects please contact the Town Clerk's office for an application form. The Council's Resource Committee considers grants quarterly; the next meeting is scheduled for 15 January 2015. For consideration at that meeting please submit your completed application form by 8 January 2015.

**Town Diary:** If you know of or are involved with organising any community events please forward all relevant details, including points of contact, to the Town Clerk so that they

can be added to the calendar which may be viewed on the Town Council's website.

Hayle Town Council  
Hayle Community Centre  
58 Queensway  
Hayle  
TR27 4NX  
01736 755005  
[townclerk@hayletowncouncil.net](mailto:townclerk@hayletowncouncil.net)  
[www.hayletowncouncil.net](http://www.hayletowncouncil.net)

## Hello from Hayle Library and One Stop Shop.

Come into **Hayle Library**, where we stock a wide selection of books for people of all ages to enjoy. We provide computer access for members and visitors and advice on some Council services. **The Tourist Information Centre** is also based in

the library building. As well as plenty of great books for children, we have a great collection of fiction, graphic novels and young adult books, so, with our huge range of adult books, including large print, audio-books and a wide selection of DVDs for all ages, we're sure we have something for everyone! **The 'Bounce and Rhyme'** session for babies and toddlers is on Wednesday mornings at 10.30am and 'Story time **and Fun**' is also on Wednesdays at 3.45pm for the slightly older children. We provide a **home library service** for any customers that are housebound. There is a fantastic team of volunteers who choose and deliver books to our housebound customers. If you would benefit from this service, please get in contact with us and we can organise this for you. **Hayle**



*ccc*  
CORNWALL CHIROPRACTIC CLINIC  
— maintaining your lifestyle —

[www.cornwallclinic.co.uk](http://www.cornwallclinic.co.uk)  
[enquiries@cornwallclinic.co.uk](mailto:enquiries@cornwallclinic.co.uk)  
01736 759088

Providing minimal costs and maximising recovery times. Our practitioners are all highly qualified, covering chiropractic, sports massage, reflexology, chiropody/podiatry, hypnotherapy, nutrition, acupuncture and yoga.

What we offer is a safe, evidence-based healthcare that will support you well into your later years.

21 Foundry Square, Hayle, Cornwall TR27 4HH



*Bridalwear Specialist  
Day and Eveningwear  
Alterations/Repairs  
Curtains/Cushions  
Affordable prices*



Tel: 01736 758249  
Mob: 07565539969  
[www.brideandchic.com](http://www.brideandchic.com)  
Sue Seabury

## PLANTECH

THE FRIENDLY RELIABLE SERVICE

- Lawns cut and borders weeded
- Hedges trimmed
- House, garden & building waste taken
- Garden clearance work
- Gravel, sand, topsoil delivered & laid
- Garage and loft clearances
- Free no obligation quotes

(Tel) 01736 754401 / 07979546434



**Chapter & Verse** are once again meeting in the library on the 1st Wednesday of the month from 2-3pm so please come along if you fancy joining the group. **The U3A writing group** still meet in the library every other Thursday when we are closed, so, if you are interested in joining, just ask one of the team at Hayle. They are a very well-established group, but always welcome fresh blood!! We are holding **computer classes** for beginners on a Tuesday, when we are closed, so, if you are interested, please ask one of the team for more information, and we can pass your details on to our study support officer who takes the classes. The courses run over a four-week period. **Cornwall Councillors** John Pollard and John Coombe hold a drop-in surgery on the first Saturday of every month from 10am – 12 noon in the library and are happy to discuss any local issues you may have. Hayle Library is open on Mondays, Wednesdays and Fridays 9.30am – 5pm and Saturdays 10am – 1pm, so, come down and visit us. If you're not a member already, remember: it's free to join - you just need to bring proof of your address.

## Hayle Twinning Association

Are you, or do you know, any family member or friend who might be interested in becoming a member of our twinning association!

Basically all that is needed is the willingness to be able to host our

friends from Pordic, help with fund-raising, and then relax and be able to enjoy a culture which is a little different from ours. In short, our friends will be visiting Hayle at Ascension time: May 14th 2015. We will take them into our homes and host them for their short stay. The twinning raises funds to enable us to pay for an evening meal for them with a little bit of entertainment thrown in: group/singers or something similar. We then carry on with our fund-raising and will be looking forward to our trip over to Pordic on August 21st/ 25th so that we can enjoy the same friendship as they enjoyed in Hayle. Pordic is in the Côtes- d'armor region of Brittany. It's on the coast. The distance from Roscoff is very similar to that of Hayle to Plymouth: approximately 73 miles. Like Hayle, it's on a bay. Ours is St. Ives bay; theirs is the Baie de St. Brieuc. One of the many places that we have visited on our journeys is the fort that was in the film "the Vikings", (Tony Curtis and Kirk Douglas). It's called Fort de la Latte. It's near Cap Frèhel. These places are just a few of what we have seen. Then, there's the Côte de granite rose, Côte d'èmeraude and the Ile de Brehat. *2nd Mon. of each month at Hayle Community Centre. 7.15pm in Room 7. Sonia Glasson 01736 753531*

### **Sprinting Santas**

While the real Father Christmas works flat out for his annual journey around the globe, hundreds of Santa



## **Lawrence Butcher Chimney Sweep**

**Brush N Vac, Cows  
Fitted, Reliable clean  
service, free advice**

**Enfield Farm 30 Hayle rd,  
Fraddam, Hayle TR27 6EH**

**01736 850033**

**07966 547829**

**loloubutcher@aol.com**

fans are preparing to use his famous suit to raise money for Cornwall Hospice Care. On Sunday 21st December a Santa sprint on the beach takes place at Marazion. In between, there's a cycle and fun-run at Padstow on Saturday 6th December, another event at Heartlands, Redruth, on Sunday 7th December and a beach run at Newquay on Sunday 20th December. Sandwiched in amongst all these dates is a Rudolph versus Santa event at Falmouth on Saturday 13th December. The events give you the opportunity to run, jog, walk or cycle in free Santa suits or in Antlers and

Reindeer brown shirts. All they ask in return is that you raise at least £20.14 in 2014. To find out more about the Cornwall Hospice Care Santa Series 2014 please visit: [www.cornwallhospicecare.co.uk](http://www.cornwallhospicecare.co.uk)

### ***Millpond Update***

**“A snowflake in October”**

After an absence of over 15 months, Snowflake, our white Callduck, arrived back on the Millponds in mid-October. I wish someone could tell us where he goes to, but no one seems to know. This is the third time he has returned to the ponds so whether he will stay this time or leave again for pastures new is anyone's guess. Autumn is well and truly established along the Ropewalk and the birds are beginning to arrive to spend the winter with us. The first Fire Crests and

# **CLIFFORDS**

## **Plumbing & Heating**

Boiler Changes - Full central heating - Servicing - Landlord Certificates

Dripping taps to complete bathrooms - All plumbing work undertaken

Free quotations

Local, Reliable, Clean and friendly service



# **01736 755170**

07761 938183



**Fully Qualified, Gas safe Registered and Water Industry Approved**

[www.waterworkscornwall.co.uk](http://www.waterworkscornwall.co.uk)

Long Tailed Tits can be seen in the hedgerows and Wagtails are bobbing along the banks of the ponds and the river. Our Black Headed Gulls have made it back from Wales and this Autumn has seen an influx of Mediterranean Gulls around the Estuary and a few adolescents are visiting the Millponds together with our regular young Glaucus and Icelandic visitors. We had hoped that the dangerous practice of trying to bridge across the river to the island had stopped for awhile but it seems that some of you have no sense at all, and took to damaging the lime trees to get branches. These trees are part of the historic fabric of the woodland are officially protected so what was done to them is actually criminal damage. The speed of the river water is increasing now that we are getting more rain, so what you are doing is increasingly dangerous. So why not give the Island a miss for the winter please? After this year's successful gold medal award for Hayle in Bloom, the committee is looking ahead to next year's entry and we are hoping to restore the Millpond's role as a butterfly and bee garden by planting suitable perennials to encourage them to visit us again, As this momentous year of remembrance of the two World Wars draws to a close, we look towards a better future for the generations to come and wish you all a happy and peaceful Christmas and New Year. Nadelik downen ha Bledham Nowyth Da! Georgina Schofield  
Volunteer Wildlife Warden

*What goes ho ho ho bonk?  
Santa laughing his head off*

Blue Bay Cafe



**Blue Bay Cafe**  
**Sandy Acres**  
**TR27 5BA**  
**07817614152**

**Gourmet burgers & wraps**  
**Breakfast**  
**Barista made coffees**  
**Delicious home made cakes**  
**Weekend specials**  
**Open Wed-Sun 10am - 4pm**  
**Closed Mon & Tue**  
**Open Christmas & New Year**

**ANGOVE**  
**SPORTS**  
**COPPERHOUSE,**  
**HAYLE.**  
**Tel(01736) 752238.**

**For all sports equipment,**  
**clothing, footwear**  
**and fishing tackle.**  
**Rackets repaired**  
**and restrung.**



## The Ladies Room

@

### TJ's Barber Shop

2 Market Square,  
Copperhouse, Hayle

Ladies Cuts from only  
£10.00.

Just walk, appointments not  
always required. All aspects of  
hairdressing available.

Tel 01736 757000

## TJ's Barber Shop

2 Market Square,  
Copperhouse, Hayle.

Opening hours

Tue 9 - 5pm

Wed 9 - 6.30pm

Thur 9 - 5pm

Fri 9 - 6pm

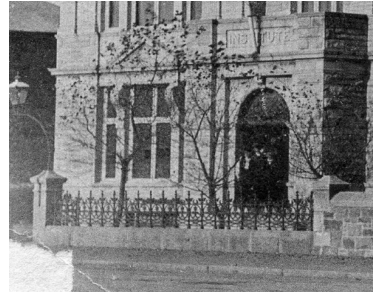
Sat 9 - 4pm

Over 20 years experience in  
Modern & Traditional Barbering.

No appointment required.

Tel 01736 757000

## Help -Photos needed.



The trustees of the Passmore Edwards Institute would like to restore the iron railings, gate and lamp that once adorned the front wall. We have not been able to find a better photograph of the original fencing than this one – and few show the lamp and arch over the gate.

If you have something better, please contact John Bennett, 753184, [treasurer@hayle-pei.org.uk](mailto:treasurer@hayle-pei.org.uk)

**Heyl St. Piran Singers** are holding a "Christmas Spectacular" at St. Elwyn's Church on December 7th. starting at 7pm. The choir is joining forces with Connor Downs School and St. Erth Concert Band, so the concert will have a very 'local' flavour to it. There will be Christmas music old and new and a chance for the congregation to participate. The evening promises to be very festive and enjoyable, so, do come along and support your local choir, concert band and school. Proceeds will go towards repairs to the church, possibly to the stained glass window Heyl St. Piran singers is a local ladies' choir which rehearses every Thursday evening in Hayle Methodist Church Hall.

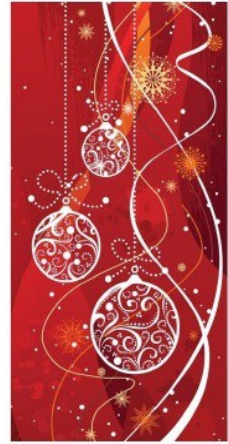
*Free entry.*

*This is a non  
profit event in  
aid of raising  
awareness of  
local  
commerce*

*Hayle*



**CHRISTMAS  
FAYRE**



**Passmore  
Edwards  
Saturday  
13th Dec  
2014**

***10 till 4***

*Tickets to see Father  
Christmas are £3 per  
child*

*There will be  
Local Produce, Gift  
Ideas, Festive Food,  
Goodies &  
Entertainment .*

Father Christmas is  
coming and the Kruners  
will be singing between

12—2pm

To book a stall contact

01736 756681 or 755107

**Hayle Chamber  
of Commerce**





**Classes at the  
Passmore Edwards Institute**

Suitable for all ages and abilities

Classes run throughout the year

**Mondays 7.00-8.30 pm**

**Tuesdays & Fridays 9.30-11.00 am**

Please phone Gwyn for details on

**01736 791784**

**or**

**07815945695**

**HANDYMAN**  
**EXPERIENCED & RELIABLE**

**"NO JOB TOO SMALL"**

Completing all those jobs  
you've been meaning to do!

Painting / Decorating  
Repairs / Flatpack Assembly  
Fencing / Sheds

**CONTACT**  
**RICK HARVEY**  
**01736 752811**

**Christmas Church Services**

**Hayle Area**

**St Elwyn's Parish Church**

Midnight Mass 11.30pm

Christmas Day Eucharist 9.30am

**Hayle Methodist Church**

Christmas Eve service 11.30pm

Christmas Day Worship 10.30pm

**Phillack Parish Church**

Christmas Eve Crib Service 4.00pm

Midnight Mass 11.30pm

Christmas Day Eucharist 9.15am

**St Erth Parish Church**

Christmas Eve Crib Service 4.00pm

Midnight Mass 11.30pm

Christmas Day Eucharist 9.15am

**Gwithian Parish Church**

Midnight Mass 10.30pm

Christmas Day Eucharist 11.00 am

**St Joseph's R.C. Church**

Christmas Day 9.00am

**Salvation Army**

Christmas Day 10.30am

**Light and Life**

(Bodriggy Academy)

Christmas Day 10.00am

**RNLI**

**Hayle branch of the RNLI would like to thank the community of Hayle for their fantastic support over the year – and wishes you all a Merry Christmas and a Happy New Year.**

**St Michael's Hospital**

One of our readers has been in correspondence with local MP George Eustice regarding the possible closure of our hospital.

# LINDSAY'S DOG GROOMING

*Dog grooming for all sizes,  
breeds & coats.  
Specialising in Poodles.*



For more information,  
contact Lindsay on  
**01736 753864 or 07792 849240**



*Situated at  
Connor Downs  
in Hayle*      *Local  
collection  
& delivery*

Here is an extract from Mr Eustice's letter of October 8 2014.

*"You are not the only constituent to contact me regarding the rumours surrounding St Michael's Hospital and in June 2014, I met with Lezli Boswell, Chief Executive of Treiske Hospital to discuss the situation. Ms Boswell assured me there are no plans to close St Michael's and told me she would prefer to see much greater investment in the hospital. I hope this reassures you there are no plans to close St Michael's and thank you again for getting in touch."*

## Dear Hayle Pump

Please could you mention as part of your Great War coverage, Ernest Rosewarne, grandson of William Hosken of Loggans, a serving officer who died and is buried in Palestine. His name is commemorated on the small plaque on the outside of the church building on the road below St Elwyn's church. Thanks P. Hosken

## Dear Hayle Pump

I am a Cornish exile happily married and living in Swindon. My husband, David, and I have spent many enjoyable and memorable holidays staying in Hayle over the years courtesy of two very good Cornish pals/Camborne residents. From time to time, our friends send us the *Hayle Pump* which is always a good read. The current issue is jam-packed with local snippets of news and information, and we're pleased that Hayle is riding high with much development taking the town forward



**Want to play music?  
You're never too old!**

**Learn music the fun way  
with Graham Smith**

I'm a Registered Guitar tutor, a coach and session musician with over 30 years' experience. I believe that anyone can learn to play. I can help you to learn guitar, bass guitar and blues harmonica and to write songs and record them.

**Call me on 01736 740141**  
(based near Penzance)

[graham@music tuitioncornwall.co.uk](mailto:graham@music tuitioncornwall.co.uk)  
[www.music tuitioncornwall.co.uk](http://www.music tuitioncornwall.co.uk)

## Adult Education

Your chance to  
LEARN ENJOY SUCCEED .

Develop your career, learn a new skill, keep fit and active or simply have fun with an adult education course near you.

Come and try one of our courses in Computers, Maths and / or English being held at :

Adult Education, Hayle Community Centre, 58 Queens Way, Hayle TR27 4NX.

Pop into the centre on a Tuesday or Wednesday for a chat or leave a message on 01736 759051  
[www.cornwall.gov.uk/adultlearning](http://www.cornwall.gov.uk/adultlearning)

and more in the pipeline. We know how hard it is to make a Newsletter interesting and keep it fresh, since we proof-read a local Newsletter here in sunny Swindon.

Well done to you and your team - keep up the good work.  
Edwina.

***Praze Hayle Male Choir*** The choir has had a terrific year. Under our new Musical Director, Tim Hosken, the choir has bounced back from a difficult period and has made great progress in all areas. We have increased our membership by 30% and have had more engagements than we have had for many years. We have sung three times in the amphitheatre at the Millpond in Hayle with Ellie Sherborn as our

## W J WINN FUNERAL DIRECTORS

We are here to help you 24 hours a day

- Funeral Pre-Payment Plans
- Memorials
- Private Chapels of Rest

### WJ WINN

Trenwith Terrace  
St Ives TR26 1QE

Tel: 01736 793029

### WJ WINN

69 Fore Street  
Hayle TR27 4DX

Tel: 01736 752124

### CHARLES BRYANT

North Road, Goldsithney,  
Cornwall TR20 9JY

Tel: 01736 710318

### MARAZION FUNERAL SERVICE

Back Lane, Marazion, Cornwall TR17 0HE

Tel: 01736 710318



Part of Dignity plc. A British Company.



hugely popular soloist and three times outside the Harbour Inn in Porthleven, doing our bit for the tourist industry. We had a very successful joint concert at Hayle Community School and another at St Elwyn's with the most impressive Pippa Drummond as solo flautist. We held concerts in Leedstown, Ruan Minor, with Angela Aggutter-Thomas, at Troon and at Mullion with Hannah Pool. Both of our soloists were wonderful. We have sung at the Rosewarne Centre in Camborne and at St Anta in Carbis Bay in a charity concert for CLIC Sargent, the children's cancer charity, with the splendid Brandon Lewis and again, Ellie. By the time this Pump is out, we will have sung at a Golden Wedding celebration in Redruth, in St Buryan at the switching-on of Hayle's Christmas lights: in total, quite an achievement for a choir that was in 'intensive care' not so long ago! But that is not all : in December we have carol concerts in Troon, Connor Downs, Pool and Pendeen.

Even that is not all: the choir are currently rehearsing an original song by Martin Bills which will be first performed by us at the Burrell Theatre in Truro in late-January, accompanying the new play: "Last orders at the Bucket of Blood" and which will subsequently be recorded by the choir to form part of the soundtrack to the play, as it tours Cornwall next year. This news will be of particular interest to readers in Phillack. This choir was down, but it was never out; now it's back in the ring and rarin' to go

## WEST CORNWALL MOBILE FOOT CLINIC

For the professional  
treatment of:

**Corns & Callus**

**Diabetics**

**Verrucas**

**Athletes Foot**

**Thickened Nails**

**Fungal Infections**

**Ingrowing Toe nails**

**Can't cut your own nails**

**All in the comfort in  
Your own home**



**Peter Williams**

S.A.C.Dip FHPT/FHPP

**Tel: 01736 751752**

**Mob: 07901 803493**

Evening and weekend calls available  
[pwpetewilliams@googlemail.com](mailto:pwpetewilliams@googlemail.com)

## Phillack Christmas Tree Festival,

**20-23 December**

Phillack Parish Church will hold its Christmas Tree Festival from 20 to 23 December, this year. The church will be open from 2.00 to 6.00 each day. Come and see the beautifully decorated church. Mulled wine and mince pies will be served. There is no charge, but donations are welcome towards the restoration of the church.

## Phillack Church Concert

On Thursday, 18 December, there will be a Concert in Phillack Parish Church by St. Ives Praise Choir at 7.30. Entrance is by donation only.

## December in Phillack Church Hall

Saturday, 13 December 12.15 p.m.  
Christmas Lunch £10 per person.  
Book with Gwen Pooley (tel. 753463).  
7.30 p.m.  
Christmas Quiz. £2.50 p.p.

## **Penwith Radio FM**

We made it! Penwith Radio is your local community radio station. After broadcasting for a few years on the internet, Ofcom granted us a broadcast licence and you can now listen to us on your radio.

The music we play is wide-ranging, as are the topics discussed. Our presenters are all ages with different backgrounds and interests, which makes for a huge variety of programmes with something for everyone. We hope that people living in the Penwith area will soon be listening to us, not just for entertainment but for local traffic reports, weather updates and our What's On news. This is your station and we want to hear from you. Do you have a subject you would like to discuss on air? Are you fundraising for charity? Do you want your music to reach a wider audience? Just pick

## **WONDERFUL WILDLIFE AND INDOOR PLAY AT PARADISE PARK!**

**Cornwall's award-winning wildlife sanctuary with penguins, otters & farmyard friends, plus fantastic JungleBarn indoor play.**

**Open every day at 10am**  
Except Xmas Day

- Home Cooked Roast Lunches (Tue, Thur & Sun)
- Themed birthday party rooms
  - Park & Gift Shop open 10am - 3pm
  - JungleBarn open 10am - 6pm
- Return Tickets £3.50



**FOR NEWS AND SPECIAL OFFERS  
JOIN US ON FACEBOOK**

**COMING SOON...**

**Our magical Santa's Grotto**



**Sunday December 6th & 7th, 13th & 14th, then 20th to 24th.  
12 noon to 2pm.  
£4.00 including gift.**

**Paradise Park, Treilissick Road, Hayle  
Open every day at 10am Infoline: 01736 751020 [www.paradisepark.org.uk](http://www.paradisepark.org.uk)**

up the phone. If you would be interested in producing your own show we will train you. People with computer/IT skills are always welcome. And, of course, to anyone who can perform the vital tasks of making coffee and washing-up, our door is always open!

I present a show every Friday 2-4 pm, playing music old and new and interviewing guests. In the last few weeks, I have talked to Hurdy Girl, a talented young woman who raises money for charity playing her Hurdy Gurdy, Callum Deveney a Nature Reserve Manager for the Cornwall Wildlife Trust and Graham Coad, the Mayor of Hayle. At 3.30 my regular spot is for cats and dogs looking for their forever home, details supplied by the National Animal Welfare Trust

in Hayle. So remember you now have your own truly local radio station. We hope you will listen to us, Penwith Radio FM 96.5 and 97.2 Pat Quayle

### Hayle Lawn Tennis Club

Club mix-in sessions: 1.30-4.00pm every Saturday, Monday and Wednesday throughout the year; 6.00-dusk every Monday and Thursday (summertime only); tournaments and events throughout the year, coaching and pay & play; active Junior section including Saturday morning club play, grouped according to age, coaching, Aegon team tennis, mini-tennis and tournaments. All ages and abilities welcome. Tremeadow Terrace, Hayle; tel: 01736850843; website: [www.haylelawntennisclub.co.uk](http://www.haylelawntennisclub.co.uk)

## HARVEY

THE HOLIDAY COACH NEAR THE COAST



LARGE FULLY ENCLOSED GARDEN  
TRAIN VIEWING DECK  
SWINGS AND PLAYHOUSE  
COVERED CYCLE STORE

WWW.RAILHOLIDAY.CO.UK  
01503 230783

### Heidi Bows BSc AAT MIP

Accountancy & Book Keeping  
Services

Fully licensed, regulated & insured.  
Year end accounts. Self assessment tax  
returns. Book keeping services. Good  
rates and fixed prices. Collection &  
Delivery service.

01736 756322 07799367197



### David N'jie

PAINTER & DECORATOR



07944 156995



01209 831397

dn-jiepainter-decorator@hotmail.com

Trethannas Cottage, Praze-an-Beeble  
Camborne TR14 0LH



## A Birds Eye View

In Hayle we are never far from a field, pond, riverbank or estuary. Look around most areas of the town and we are well supplied with trees, parks and gardens. Yet for many of us we can live almost our entire life wrapped up in our own affairs and not noticing the wide variety of BIRDS that share our environment with us! I am no ornithologist, twitcher, birder nor any of the other terms for keen birdwatchers, but years of country and coastal living has given me an appreciation of our feathered neighbours. We have the wonderful Paradise Park in our town with well looked after and presented birds from all over the world, plus other attractions, a restaurant, ball park and a welcoming pub with fine ales. Look over the hedge though and you will see part of one of

Europe's most important estuaries for resident and migratory waterfowl, with road or foot access around most of it, and a reinstated saltmarsh with bird hide, lake and island at Ryan's Field off Hayle Causeway. Free to visit and watch birds, our estuary system -some of it like Copperhouse Pool and the harbour, RIGHT IN THE MIDDLE of our town- is a fantastic asset for the area yet unappreciated by so many. Places like the Scilly Isles actively promote their fortunate location to bird fans from all over the UK and further afield and extend their tourist season at both ends into the spring and autumn migration periods yet Hayle businesses and accommodation seem blind to the possibilities! Most of us have a pair of binoculars stashed away somewhere around our homes, and more than likely a 'bird book' of some description – it

# PHILIPS

## HOME IMPROVEMENTS

FOR ALL YOUR BUILDING  
AND RENOVATION WORKS  
UNDER ONE ROOF.

LOCAL FIRST CLASS TRADES  
FROM FLATPACKS TO  
EXTENSIONS.


Mobile 07857 607697

Office 01736 752125

bbcurran@btinternet.com

## Foundry Fruit , Veg & Deli

 Local seasonal veg, honey, eggs  
& flowers. Delivery service &  
gift box orders available. Herbs &  
spices . Open Mon-Sat 8.30 to 5pm.  
Phone 07740 663004

 Find us on Facebook



## The Gallery Coffee Bar.

Now selling a large range of beautiful and affordable new and pre-loved silver and gold jewellery. Pop in and see us for a delicious coffee and a browse.

doesn't matter if it's old.. birds still look the same as in the old days! You don't need posh equipment, a hat, waterproof coat, sensible footwear in unobtrusive colours are helpful, and just take advantage of the free show provided by our environment and its many different habitats, all within walking distance and much on the level. A lot of the locations are wheelchair and pushchair friendly, much completely suitable for cycling, and many have strategically placed public seating to ease older limbs. WATCH BIRDS! They can be striking, dramatic, funny, or just beautiful, but we live in a brilliant place for it (G Coad.)

## **120 Marine Energy Jobs**



Work has started on the site of Hayle Marine Renewables Business Park which is expected to open in summer 2015 and create 120 jobs. Hayle is already home to the Wave Hub renewables test site, which is 10 miles from the North Cornwall coast, as well as three marine energy demonstration zones. The new business park is being built on the site of the former coal-fired power station at North Quay.

***Did You hear about the dyslexic devil worshipper?***

***He sold his soul to Santa. :)***

## **TJ'S CARPETS LTD.**



**New Showroom at Tolroy Garage,  
58 Mellanear Road, Hayle TR27 6HF**

Come and see our wide selection of carpets & vinyls,  
laminates and patterns

**Our famous home selection service still available**

Full range of flooring accessories

**Call Now! 01736 757540 or 07976 608215**

Free measuring & estimate service

**“Before You Buy, Give Us A Try”**

**Hayle Model & Duchy  
Railway club & Railroaders**

MODEL RAILWAY  
EXHIBITION ONE DAY  
CHRISTMAS SHOW IN THE  
HAYLE DAY CARE CENTRE,  
COMMERCIAL RD HAYLE ON  
SATURDAY 6<sup>th</sup> DECEMBER

10am—4.30pm.

ADMISSION

£2 Adults—£1 Children

Father Christmas will be  
in attendance for all  
children under 10



**HAYLE MODEL RAILWAY AND  
DUCHY RAILROADERS CLUB**

Club Officers for 2015 as elected at  
our recent AGM:

President  
Bob Mimms 01736 757910  
Chairman  
Pat Jeffries 01736 757679  
Vice-Chair  
Alistair Styles 01736 794609  
Secretary  
Keith Martin 01736 754843  
Treasurer  
Richard Adams 01209 711984  
Duchy Railroaders Rep  
Morven Munday 01735 754144  
Club Room is in Unit 5, Praze-an-  
Beeble Business Park, Praze-an-  
Beeble TR14 0JU.  
Club nights every Monday and  
Thursday evenings from 645pm until  
930pm.

New members are welcome from 12  
years of age to OAPs (boys or girls)  
together with anyone who is  
interested in Railways, Models and  
Model Railways. Should you have  
any queries, please contact me  
accordingly. (**Bob Mimms**)

**Hayle Heritage Centre**

Hayle Heritage Centre has had a  
great season: we have had over 600  
people come through the door; held  
a number of very popular family fun  
days, ran a great community project  
that explored Hayle during the First  
World War, took part in Foundry Day,  
gained new volunteers and have had  
a wealth of artefacts donated! We  
are now closed for the winter but our  
volunteers are still working behind

**ALL AERIALS**

TV Aerial & Satellite TV Specialists.

digital

Registered Digital  
Installer



25 Years Experience

For all aspects of Tv Aerials,  
Satellite Systems Fixed &  
Motorised, Installations &  
Repairs  
Free Friendly Expert Advice By  
Local Engineer.

Tel : 01736 759225

Mobile : 07979503907

Email. jonathan@allaerials.co.uk

the scenes – going through the collection, starting conservation work, undertaking research and developing ideas for next season. We have a number of artefacts that have been donated which we need more information on before we can display them; one in particular is a bronze plaque that was salvaged from High Lanes Church, and it reads: “To the glory of God and to the dear memory of the Deaconess Edith who died June 28th 1897 R.I.P. Placed by her sister Eleanor Mary Thompson” If anyone has any information about Deaconess Edith, the Thompson family or High Lanes Church, we should love to hear from you. **If you are interested in getting involved with the Heritage Centre or have any donations, please get in contact with Laura by phone on 01736 757683 or by email:**

[laura@harveysfoundrytrust.org.uk](mailto:laura@harveysfoundrytrust.org.uk)



## Young leader award

Congratulations to Vicky Burlingham from Hayle Surf Lifesaving Club who won Young Leader of the Year at the Cornwall Sports Awards.

Vicky has been a member of HSLSC since the age of 7 progressing from Nippers to Juniors to Seniors. She is an inspiration to the children she coaches.

## Keeping Fit Can Be Fun!!

**Mon 10 am Circuit training for over 50s**

**Thur 10am Extend Movement to music over 60s at the Passmore Edwards Institute**

**Wed 2pm at Leedstown Village Hall**

**Start the week feeling good!**

**Sylvia 01736 757560**



## The Sleepy Hollow

Your Alternative Gothic Gift Shop

Family-run Gothic Gift Shop

Selling a wide range of Gothic gifts, candles, incense, clothes and more

Incorporating:

Sleepy Hollow Herbs,  
Medicinal & magical herbs,  
Tissaries, and

Hand-blended incense and oils.

Visit our shop at Unit 3 - Pratts Market,  
Chapel Terrace, Hayle TR27 4AB

**07747 078274**

[www.thesleepyhollow.vpweb.co.uk](http://www.thesleepyhollow.vpweb.co.uk)

# HIDDEN WORDS QUIZ 118

by Cleverclogs

This time, we're looking for jewellery and other human decoration.

1. You know, we consumed all I once grew in the garden – vegetables, that is.
2. There were four in George's group but only three in ours, yet we still won the quiz.
3. Despite its Tudor origins, the farmhouse is still going strong after several re-builds.
4. In the wardrobe, a dress still hangs forlornly on its hanger – a sad reminder.
5. In Nova Scotia, rain and snow fall in equal amounts (even sometimes at the same time!)
6. In the front of his turban gleamed a huge ruby set in gold. [Answer is not ruby – Ed.]
7. You'll have to give Di a demonstration again – she hasn't got the hang of it yet.
8. I'm almost too tired to chat – pinch me if I doze off.
9. The prosecutor questioned me over what happened. I just said it as it was.
10. When next you and Bob race, let him win for a change.

## JC ELECTRICAL

Your complete 24 hour Electrical Service

**Rewires • New Build • Lighting •  
Showers • Extra Sockets • Heating**

City & Guilds Qualified (Tests to BS7671)

Part P registered

Prompt and reliable friendly service

Free estimates and all work guaranteed

**Office: 01736 754543**

**Mobile: 07739 577549**



11. Sometimes, I hear ringing in my ears, then I realise it's the telephone.

12. Look at all that stuff on the mantelpiece – china dogs, letter-rack, clock, etc.

13. Isn't the artichoke ready yet? I'm just about to dish up dinner.

14. Guess who came over last night – it really surprised us!

15. There was even a mule tied to the hitching rail, it was so authentic.

*To win a prize voucher worth £20 to be spent with any of our advertisers, send your answers along with your contact details to:*

*[editor@haylepump.org](mailto:editor@haylepump.org) or leave at any of the drop-off points on page 2.*

Answers to quiz in issue 117:

1. Fish
2. Clam
3. Salt
4. Wave
5. Bass
6. Lobster
7. Porpoise
8. Limpet(s)
9. Kelp
10. Tuna
11. Dugong
12. Island
13. Current
14. Seal
15. Coral

The winner, picked by randomly computer-generated number was:

**Mrs Carmen Thomas of Phillack who will receive a £20 voucher to spend with our advertisers.**

## YOUR OLD TAPES ONTO CD



**YOUR OLD CASSETTE,  
REEL TO REEL TAPES,  
OR 33/45/78 RPM RECORDS  
ALL SAFELY TRANSFERRED  
ONTO CD.**

Your precious memories saved forever.  
Your own photos, information and dedications  
can be included on the CD/DVD cover.

**Also now : old VHS video tapes  
and Photos all onto DVD.**

Digital Recording for Singers and Musicians  
Songwriters, Poets, Story Tellers, etc.  
Also Musical Backing Tracks provided etc.

Contact: Steve Nunn. Telephone 01209 719481  
[www.cornmillstudio.co.uk](http://www.cornmillstudio.co.uk)  
Email: [cornmillstudio@aol.com](mailto:cornmillstudio@aol.com)

# PAUL SHERRIS

**Hayle's only  
local family owned  
FUNERAL  
DIRECTOR  
Private Chapel of Rest  
Pre-Payment Plans  
available  
West Terrace, Hayle.  
TR27 4JS.  
01736 753969  
Day or night**

### The Local shop

*Oh No Did you hear?  
The local Shops are no longer  
here.'*

*Oh what a shame,  
I loved that shop'  
Well did you use it?'  
Not a lot*

*So maybe there's a reason why  
People go elsewhere to buy  
But when they re gone  
you 're soon aware  
Community spirit is also bare.*

(Emma)

**Shop Local in Hayle and  
support your local shops**

### **Rag trade stories?**

I am conducting some research into Cornwall's past, especially the Hayle area. Does anyone have any anecdotes, photos, information on the crafts of weaving, spinning and dyeing, clothing or the cloth trade?

I hope to publish and credit my findings in the Gorsedd Competition 'Old Cornwall', the Cornish Studies Library/Knessen Kernow and the 'Journal' for Weavers, Spinners and Dyers. Thank you for your help.

Jinty Knowling Lentier  
[jintyknowling@yahoo.com](mailto:jintyknowling@yahoo.com)  
or via The Pump

*My new year's resolution is to be more optimistic by keeping my cup half-full, with either rum, vodka, or whiskey. :)*

# St Erth & Hayle Cars



**4 - 8 - 16 Seat Vehicles.  
8 Seat Party Buses.  
Polite, Friendly Staff.**

**We are taking bookings  
for Xmas Eve, Xmas Day,  
Boxing Day & N.Y.E!**

**01736 754000 or 01736 754040**

*Merry Christmas & Happy New Year  
From St Erth & Hayle Cars*

## **Interesting Facts : Did you know?**

Glass takes one million years to decompose, which means it never wears out and can be recycled an infinite amount of times!

If you get into the bottom of a well or a tall chimney and look up, you can see stars, even in the middle of the day.

When a person dies, hearing is the last sense to go. The first sense lost is sight.

In ancient times strangers shook hands to show that they were unarmed.

Strawberries are the only fruits whose seeds grow on the outside.

Avocados have the highest calories of any fruit at 167 calories per hundred grams.

Gold is the only metal that doesn't rust, even if it's buried in the ground for thousands of years.

Your tongue is the only muscle in your body that is attached at only one end.

If you stop getting thirsty, you need to drink more water. When a human body is dehydrated, its thirst mechanism shuts off.

Zero is the only number that cannot be represented by Roman numerals.

Kites were used in the American Civil War to deliver letters and newspapers.

Drinking water after eating reduces the acid in your mouth by 61 percent.

Peanut oil is used for cooking in submarines because it doesn't smoke unless it's heated above 450F.

(Thanks & Merry Xmas Barry Thomas)



**HYDRO BATH**                      **BLOW DRY**  
**BRUSHING**                      **NAIL CARE**  
**EAR/EYE CARE**    **FLEA TREATMENT**  
**DEODORIZE**                      **CLIPPING.**  
**ALL NATURAL PRODUCTS.**  
**PH 07903 042950**  
**Lesley 01736 850971**  
**E-mail lesleyandkeith@msn.com**  
**City of Guilds Trained**

## **Rosewarne Manor Restaurant**

Gwinear Road, Connor Downs. TR27 5JQ



**01209 610414**

**Award Winning Restaurant.**

**Booking now for Christmas.**  
**Parties for small & large groups.**

**Special offers for Club & Societies**  
**Annual or fund raising dinners.**

**Main restaurant & private dining**  
**Function rooms for all occasions**  
**www.rosewarnemanor.co.uk**



**THE CORNUBIA INN**  
**HAYLE**  
 35 Fore Street, Hayle 01736 753351

FOOD SERVED ALL DAY  
 LOCAL CORNISH ALES  
 FULLY STOCKED BAR  
 LOOSE LEAF TEAS & GREAT COFFEE  
 FULL SPORTS COVERAGE WITH THREE  
 LARGER HD TV SCREENS  
 LIVE ENTERTAINMENT  
 FAMILIES WELCOME, DOG FRIENDLY  
 OUTSIDE DRINKING AREA  
 CUSTOMER PARKING  
 SPECIAL REQUIREMENTS BY  
 ARRANGEMENT  
 info@cornubiainnhayle.co.uk

## Competition Winner:

The winner of The Cornubia Inn competition from Issue 117 was

*Robb Worthington of Hayle*

who wins £10 to spend on food/drinks at The Cornubia Inn.

The correct answer was:

### **SS Cornubia(1858)**

The SS Cornubia was built in Hayle by Harvey & Co. as a **packet ship and ferry for the Hayle Steam Packet Company**. Sleek and painted white, with two funnels mounted close together amidships and with a high bridge over the paddle wheels, she plied the Hayle/St Ives to Bristol route in the days when the Great Western Railway had not penetrated as far as West Cornwall. She was given the name Cornubia from the Latinised name for Cornwall and was a fast iron paddle steamer, long and narrow at 210 ft. (64 m.) long and with a 24' 6in (7.47m.) beam. Her Harvey's built twin oscillating side-wheel engines with four boilers and 9ft. (2.7m.) stroke produced 230 HP and was capable of propelling the vessel at over 18 knots (21 mph). Her shallow 9ft. draft was initially designed to cope with the shallow harbours in Cornwall, but proved to be very useful in her later life. During the American Civil War, agents for the Confederacy



**JOHN ANDREWS**  
*Traditional Bespoke Woodwork*

**Windows, Doors and Staircases**  
**Boxframe Window Repairs**  
**New Sash Cords and Axle Pulleys**

**Entrance Gates and Gate Posts**  
**Furniture Repairs**

**www.johnandrewsjoinery.co.uk**  
**Mob: 0776 534 1616**  
**Tel: 01736 741 064**

purchased Cornubia, and took her over the Atlantic where she was officially renamed Lady Davis though by all accounts her old name Cornubia was also commonly used. She proved to be a very good investment. Her speed, manoeuvrability and shallow draft making her an excellent blockade runner. She successfully avoided and outran Union forces on 22 occasions bringing vital supplies to the Confederate army at Wilmington. However, on her 23<sup>rd</sup> run on November 8 1863 luck ran out for Cornubia. She was pursued by Nippon and was forced to run up on the beach at New Inlet. The ship's captain, Richard Gayle, the ship's carpenter and one seaman remained on-board and helped other crew and passengers to escape to shore.

(wikipedia)



**HAYLE DAY CARE CENTRE**  
**Commercial Road, Hayle**

An affordable day care facility for the elderly of Hayle, St Ives and district

Transport • Freshly cooked meals

Also includes bathing and hairdressing  
 Therapy and lively social interaction

Always a friendly welcome

**Call 01736 755000**

***Just for Fun :***

***Name the Christmas song?***

- 1. The quadruped with the vermillion proboscis.***
- 2. Array the Corridor.***
- 3. Give Attention to the Melodious Celestial Beings***
- 4.. Nocturnal Noiselessness***
- 5. Castaneous-colored Seed Vesicated in a Conflagration***

*Answers on page 42*

**abode**  
 Property Agents

**THINKING OF MOVING?**

We deliver a fresh, passionate and personal approach to selling your property.

Why not contact us for a free market appraisal?

Call on:

**01736 756681**

[info@abodepropertyagents.co.uk](mailto:info@abodepropertyagents.co.uk)  
[www.abodepropertyagents.co.uk](http://www.abodepropertyagents.co.uk)

## CLUB LISTINGS

**Hayle in Bloom.** Last Monday of the month, except for Aug & Dec. Held at Hayle Rugby Club 7pm.

[www.hayleinbloom.org.uk](http://www.hayleinbloom.org.uk)

**Hayle Community Archive.**

Open Tuesday & Thursday 10 a.m. – 1p.m.:Tel 01736 753962, email:

[haylearchive@haylearchive.org.uk](mailto:haylearchive@haylearchive.org.uk)

Facebook: Hayle Community Archive. Twitter:@hayle archive

**Hayle & District Bowling Club.**

10am every Sunday. Short Mat bowling indoors during winter 01736 753565

**Hayle Film Club.** Films shown on the 2<sup>nd</sup> Saturday of every month at 7.30 p.m. at The Passmore Edwards Institute. Ph Donna 01736 753184. Check on

[www.haylefilmclub.org.uk](http://www.haylefilmclub.org.uk)

**Hayle Flower Club.** 4th Wednesday of the month 7.30pm, Hayle Daycare Centre in the conservatory

Tel: 01736 793338

**Hayle Harbour Users Association.**

First Monday of each month, 7.30pm, Royal Standard Pub.

R.Lello 01736 757632

**Hayle Judo Kwai** meeting Unit 7

Rospeath Industrial estate, Crowlas.

Tues & Thurs. Sensei Richard 01736

740723 or Karen Deacon 0779 209 9979

**Hayle Library Reading Group.** 2.p.m

first Wednesday of each month.

**Hayle Line Dancing Club.** Every Mon.

at Hayle Methodist Church 7.30–9.30pm

Adults £3, Children £1 (includes light refreshment). Car parking available.

Tel 01736 752610.

**Hayle & District Lions Club.** 2nd and

4th Tuesday of every month, 7.30pm at Passmore Edwards Institute.

Tel. Mel George 01736 756484

**Hayle Lawn Tennis** All ages and abilities welcome. Tremeadow Terrace, Hayle;



**Webb & Philp Ltd**  
electrical contractors



**17th**  
**BS7671** edition

**All aspects of Electrical work undertaken**

Free Estimates, No Job Too Small  
Prompt, Reliable, Fully Qualified, Est. 1972

[www.webbandphilp.co.uk](http://www.webbandphilp.co.uk)

Telephone/Facsimile 01736 753651 Mobile: 07419 376882

email: [electricians@webbandphilp.co.uk](mailto:electricians@webbandphilp.co.uk)

- ✓ Re-Wires
- ✓ Security
- ✓ Showers
- ✓ New Build
- ✓ Testing
- ✓ Maintenance
- ✓ PAT Testing
- ✓ Extra Sockets & Lights

01736850843

www.[haylelawntennisclub.co.uk](http://haylelawntennisclub.co.uk)

**Hayle Local Vocalz** - a 65 strong mixed voice adult choir. Mondays, 8pm, St Elwyn's Church, Hayle. 07950 585787

**Hayle Model Boat Club.** Wednesday evenings 7-9pm & Sunday mornings 10-12 noon, meeting at green chalet by Hayle outdoor swimming pool. Tel: 01736 755516, or Les on 01736 754254

**Hayle Model Railway Club & Duchy Railroaders** Club Rooms Unit 5, Praze Business Park, Praze-an-Beeble. Mon. & Thurs. 7pm – 9.30pm. Bob Mims 01736 757910

[bobmims@live.co.uk](mailto:bobmims@live.co.uk)

**Hayle Meanderers** Every Wed. 10.30am Commercial Road car park. Free, + contribution to carshare. Tel Joan Smith 01736 793631

**Hayle Old Cornwall Society.** First Friday of each month. Oct. to May. Passmore Edwards Institute, 7.30pm. Maria Prosser, 01736-755072

**Hayle Pilot Gig Rowing Club.** Rowing out of Hayle Harbour most Tuesdays and Thursday evenings Tel. 01736 754254  
www.haylegigclub.com .

**Hayle Penwith U3A** Hayle Day Care Centre Social meetings 2<sup>nd</sup> & 3<sup>rd</sup> Thurs. 2pm. Art, History, Writing, Play reading, Current Affairs, Luncheon Club. Chairman Mel George 01736 756484

Secretary Tess Hulland 01736 759658  
**Hayle RNLI** meets Mar to Nov at 7.30pm 2nd WED of the month at Unit 5, Hayle Ind Park. Tel: 01736 753567

**Hayle Rotary Club.** Monday 7 pm except Bank Holidays White Hart Hotel, David Raymer 01736 755029 or Trevor Osborne 01736 793596

**Hayle Surf Life Saving Club** Riviere Towans Hayle TR27 5AF  
Captain: Dave Parker 755303

**Heyl St Piran Singers.** Every Thursday at Hayle Methodist Church Hall at 7.30 to 9.30pm.

Ann Birch 01736 752335

**Hayle Twinning Association.** 2nd Mon. of each month at Hayle Community Centre. 7.15pm in Room 7. Sonia Glasson 01736 753531

**Heyl Town Band.** Rehearsals Tuesdays & Thursdays 7:30pm – 9:30pm, Junior band rehearsals Thursdays 6:pm – 7:00pm

**Laudate Chamber Choir-** a 40 strong church/cathedral style chamber choir. Tuesdays 8pm, St Elwyn's Church, Hayle: Tel 07950 585787

**Phillack Church Hall.**

1st Friday – Bingo 7pm

2<sup>nd</sup> Saturday Church Lunch: 12.15,

Last Saturday Quiz Night 7.30 p.m.

**Phillack Parish Church**

9.15 am services every Sunday ( except 5<sup>th</sup>) preceded by beautiful bell ringing.

**Praze Hayle Choir.** Every

## BIZ AND BYTES

07974 647524      01736 755971

If you require computer assistance, either training or to resolve a problem then give us a call. Visits arranged to suit you.

Looking after the home user and small business.

**WEBSITES • BROADBAND • TRAINING •  
COMPUTER SUPPLY • TYPING**



www.bizandbytes.co.uk  
enquiries@bizandbytes.co.uk



## P G FRANKLIN

Chapel Hill, St Erth

Carpenter & General House Repairs

Garden Landscaping

NO JOB TOO SMALL

Telephone: 01736 757360

Mobile: 07778 739341

Tues.7.30pm. Methodist Hall  
Don Metcalf 01736 757720  
**The Rotary Club of St Ives Bay**  
New Rotary Club for men & women  
meeting on Tuesdays at the Carbis Bay  
Hotel 6.30 for 6.45pm. Contact:  
[secretary@stivesbayrotary.co.uk](mailto:secretary@stivesbayrotary.co.uk)  
**Royal British Legion.** Passmore  
Edwards Institute. Every Mon. Wed. &  
Friday evening, and Saturday afternoon.  
Mr John Bawden  
Tel: 0774 327 6412

**Save our Sand.** 2nd Tuesday of each  
month, 7.30pm at the Passmore  
Edwards Institute. Hayle

**Shore Surf Ladies Only & Juniors  
Surf Club** All abilities welcome. Every  
Saturday 9 – 11am. 01736 755556  
Beachline 07855755556  
[info@shoresurf.com](mailto:info@shoresurf.com)

**St Erth Concert Band**  
Rehearsals Tues 7.30 to 9.30pm in  
Methodist Church Hall  
G.Lawry 01736 755512

[www.sterthconcertband.co.uk](http://www.sterthconcertband.co.uk)

**St Erth Friendship Club for the over  
60s.** Tuesdays 2pm – 4pm St Erth  
School Hall £1.50 per session.  
01736 850758

**St Ives and Hayle Community Choir**  
Tuesdays 2pm to 3.30pm at St Anta  
Church Hall, Carbis Bay 07950 585787

**Table Tennis for Fun,** every Friday at  
2pm at Hayle Methodist Church Hall,  
Chapel Hill, Hayle. Only £2 per session.

Bats, balls and squash provided.  
John Nunn 01736 759686  
**W.I. Hayle** 1st Tues.of the month,  
7.00 pm Hayle Daycare Centre  
Tel. 01736 756 007 Margaret Stockton

*To appear on this page free of  
charge drop in details to :*

*Passmore Edwards Institute  
Angove Sports  
Bean Belt  
or email [editor@haylepump.org.uk](mailto:editor@haylepump.org.uk)*



*Christmas Song answers from pg 39*

- 1. Rudolph the red nose reindeer*
- 2. Deck the halls*
- 3. Hark the Herald Angels sing.*
- 4. Silent Night*
- 5. Chestnuts roasting on an open fire.*

*Merry Christmas and  
Happy New Year Hayle*



**Dave's Log Lorry**  
Phone 07909 660992  
0781 3469641

I am at the following places :

**Hayle** at Copperhouse or behind the  
**Co-op** supermarket on Monday  
afternoons and evenings till 18.30 and  
Friday all day.

**PZ A30 layby** on Tuesday Wednesday and  
Thursday 09.00 to 18.30

## ADVERTISERS INDEX

1<sup>st</sup> Choice Paving.....2  
 Abode Estate Agents.....39  
 Adult Education.....26  
 Alexander McDonald.....10  
 All Aerials.....32  
**Angove Sports.....21**  
 Berwicks Estate Agents.. 9  
 Big Pink Tree.....44  
 Biz and Bytes.....41  
**Blewetts Toys.....6**  
 Blue Bay Café.....21  
**Café Riviere.....12**  
 Chamber of Commerce..23  
 Chimney Sweep.....19  
 Christmas Trees.....3  
 Clare Mungles Therapy..16  
 Cliffords Plumbing.....20  
 Computer Coach.....15  
 Cornmill Studios.....35  
 Cornubia Inn.....38  
 Cornwall Chiropractic.....17  
 Cornwall Councillors.....14  
 Daisy Potter.....6  
 Dapper Dogs.....37  
 David N'Jie.....20  
 Des Button.....12  
 DWT Carpets.....10  
**Farm Shop..... 6**  
**Flowertime Florists....44**  
 Foundry Fruit & Veg.....30  
**Gallery Coffee Bar...3 &30**  
 Graham Smith Music.....25  
 Guitar Lessons.....4  
 Gwynn's Yoga.....24  
 Harvey Rail Holidays.....29  
 Hayle Cycles.....4  
 Hayle Day Care .....39

Heidi Bows.....29  
 J C Electrical.....34  
 John Andrews.....38  
 Kernow Car Valeting.....11  
 Kleezeze.....14  
 Ladies Room (Hair).....22  
 Lindsay's Dog Groom.....25  
 Logs Lorry.....42  
 Millpond.....5  
 Mobile Foot Care.....27  
 Model Railway.....32  
 Neil Shepherd Music.....15  
 Nick Farrar Windows.....43  
 Painter & Decorator.....7  
 Paradise Park.....28  
 Passmore Edwards Inst.....7  
 Paul Sherris Funerals.....35  
 PG Franklin Handyman....41  
 Philips Home Improve....30  
 Philips Pasties.....8  
 Plantech.....18  
 Rick Harvey Handyman..24  
 Rosewarne Manor.....37  
 Sleepy Hollow.....33  
 St Erth Cars.....36  
 Sue Seabury Dressmaker.18  
 Sylvia's Keep Fit.....33  
 T C Tech.....13  
 T J Barbers.....22  
 T J Carpets.....31  
 T P Wills.....11  
 Transformations.....9  
 Webb & Philp.....40  
 Winn's Funeral Director..26

(Pick up the Pump at places marked in **bold**.)

Tel: 01736 - 757818  
 Mob: 0779 263 2635

# Nick Farrar

## Property Maintenance

Windows-conservatories - Kitchens - Carpentry - Fibre Glass Flat Roofs

*I would like to wish all my customers a very Happy Christmas and prosperous New Year, and to thank you and all the pump readers for your kind wishes during my recent illness. Nick Farrar*

# The Big Pink Tree



Scarves  
&  
Purses

Luxury Gifts

Greeting Cards

Candles

**Jewellery**

**flowers**

gift stationery

hand-made Soaps

**local made crafts**

Children's Gifts

local family run business

[www.thebigpinktree.co.uk](http://www.thebigpinktree.co.uk)

01736 757527

Penpol Terrace  
Hayle TR27 4BQ