

HAYLE PUMP NEWSLETTER

Free copy

35 years Trading



*Free copy thanks to our
volunteers and advertisers.
Circulation 2500*

Hayle Pump Newsletter

Passmore Edwards Institute, 13-15 Hayle Terrace TR27 4BU

The Pump is produced by volunteers as a community newsletter.

NB All articles accepted are not necessarily the view of the editorial team.

Editorial team contact

editor@haylepump.org.uk

Advertising Jeff Turk

ads@haylepump.org.uk

Phone 01736 752319

Web site John Bennett

webmaster@haylepump.org.uk

Team members

Samuel Marsden

Mary Cambridge

Sarah Turk

Send your adverts to

ads@haylepump.org.uk or use
drop off points

Advertising Rates

1/8	63 x 47.5	£10
1/4	63 x 95	£15
1/2	Not available	

Subscriptions

For 6 issues by post , please send a cheque or postal order for £3.60 made out to Hayle Pump Newsletter to:

Hayle Pump Subscriptions

35 Penpol Terrace,

Hayle TR27 4BQ

Please give your name and number as well as the delivery name and address.

Send any articles or copy to

editor@haylepump.org.uk

or drop off at

Angove Sports (Copperhouse)

The Farm Shop (Foundry)

Passmore Edwards Institute

(opposite War Memorial)

**NEXT DEADLINE is
13th APRIL**

1ST CHOICE PAVING

Drives, Paths, Patios, Landscaping.



01736 753087 07969 960128

www.1stchoicepaving.com

Clifton Terrace, Hayle.

Toy Story.



Brian and Heather Buckby

Blewetts of Hayle will be celebrating 35 years in business on 1st March 2016. Originally the business was called Blewetts Radio, it was then changed to Blewetts of Hayle, and opened as a toy and music shop, selling top 20 singles, LPs and cassettes.

During the 90s the music side of the shop made way for the new Hayle Post Office. This was located within the shop, and was part of the business for six years. After this period Blewetts of Hayle specialised in toys only.

Brian and Heather would like to take this opportunity to thank all their customers who have supported the business over the past 35 years and hope to welcome new customers who have yet to experience a traditional Toy Shop.



Please support your local traders, remember the internet does not offer personal service.

ALEXANDER McDONALD

GARDENING SERVICES,
PRESSURE WASHING,
GUTTER CLEARING,
PAINTING,
FASCIA BOARD CLEANING AND
ALL THOSE LITTLE JOBS YOU
KEEP PUTTING OFF.
FREE ESTIMATES.
BIG ENOUGH TO COPE, BUT
SMALL ENOUGH TO CARE

Mob 07880 777591
Home 01736 753102
Email alexmc808 @talktalk.net



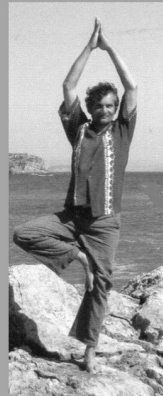
Institute of Endrian Yoga

Khalid Beg
Founder of

Endrian Yoga will teach you to regain youthful movement, body mechanics & dynamic meditation.

Yoga lessons for individuals & groups, workshop weekends,

Yoga dance, Reiki & Kinesiology.



www.endrianyoga.com

Email k@endrianyoga.com
01736 757919 07979 606851

Relaxing Yoga for 40+

A NEW COURSE IN THE CHRISTIAN FAITH



FOR THE PEOPLE OF HAYLE & BEYOND

How much do you really know about the Christian Faith?

Would you like to know more?

Can you commit yourself to 6 weeks for a couple of hours to

- find out more?

- update your knowledge?

The Revd. Samuel Marsden will be running a series of courses over the next two years, which will include a look at:

Old and New Testaments

Apostles' Creed and Lord's Prayer

Christian Doctrine and Christian

Spirituality

Church History and the English Bible
Christian Ethics and Relations with other Faiths.

This series has been developed by the Diocese of Truro and the Methodist District of Cornwall.

The only commitment is for six weeks at a time. If you do not want to continue after each 6 week course, then you do not have to. If you want to miss one or two courses in the series and come in at a later stage, you can do that as well.

However, experience tells that a commitment to the whole course produces the best dividends.

The course is open to all denominations and none. Those with doubts are particularly invited.

The first series on the Old Testament will begin on **Wednesday, 17 February**, in collaboration with Churches Together in Hayle.

The Venue will be the **Hayle Methodist Church**.

The time will be: **7.00 to 9.00 p.m**

There will be a small charge of £5.00 for the first series to cover the cost of the Powerpoint presentation, materials, refreshments and a donation to the Methodist Church.

01736

757818 0779

Nick Farrar

Property Maintenance

Windows-conservatories - Kitchens - Carpentry - Fibre Glass Flat Roofs

You will need to register for the **Course**. For further information, please contact the Revd. Samuel Marsden on **01736 756669** or samuelmarsden@hotmail.com; you can also see a description of the series on www.trurodiocese.org.uk/discipleship/windows-into/.



Hayle Film Club presents 4 award-winning films

In February and March Hayle Film Club will proudly screen four of the most anticipated and crowd-pleasing movies of the past year, all of which have won numerous awards around the world:

Saturday, 13 February - SUFFRAGETTE. The moving story of London's working-class feminists who fought for the right to vote, starring Carey Mulligan.

Thursday, 25 February - TAXI TEHRAN. Banned Iranian film director Jafar Panahi conducts



MOUNTAIN - ROAD - BMX SPECIALIST

Bicycle Sales and Repairs

Tel: 01736 753825

36 Penpol Terrace, Hayle TR27 4BQ
www.haylecycles.com

Country Skittles



FUN FOR ALL!

- Skittles Lanes
- Great Food
- Shooting
- Games
- Bar





www.countryskittles.com

Opening Times

SCHOOL & BANK HOLIDAYS:
 Mon to Sat:
 Noon to 11pm
 Sunday:
 Noon to 10:30pm
 ALL OTHER TIMES:
 Mon to Fri: 6pm to 11pm
 Sat: Noon to 11pm
 Sun: Noon to 10:30pm

Townshend • Hayle • TR27 6ER
01736 850209

Cabinetmakers & Joiners
JOHN ANDREWS

Traditional Bespoke Woodwork

Windows, Doors and Staircases
Boxframe Window Repairs
New Sash Cords & Axle Pulleys

Entrance Gates & Gate Posts
Furniture repairs

email: johnandrews123@btinternet.com

www.johnandrewsjoinery.co.uk

Mobile: **07765 341616**

Tel: **01736 741064**

ALL AERIALS

TV Aerial & Satellite TV Specialists.

digital

Registered Digital
Installer



25 Years Experience

For all aspects of Tv Aerials,
Satellite Systems Fixed &
Motorised, Installations &
Repairs
Free Friendly Expert Advice By
Local Engineer.

Tel : **01736 759225**

Mobile : **07979503907**

Email. jonathan@allaerials.co.uk

clandestine conversations while posing as a taxi driver in Tehran. *In Persian, with English subtitles.*

Saturday, 12 March - THE

MARTIAN. Matt Damon stars as an American astronaut stranded on Mars. Superb adventure/sci-fi tale!

Thursday, 24 March - BROOKLYN.

A luminous Saoirse Ronan plays a homesick Irish immigrant in 1950s New York. A lovely film in every way.

Screenings take place upstairs at the Passmore Edwards Institute and begin promptly at 7.30pm with a warm welcome, followed by free refreshments on Saturdays. Tickets are £5 per person (£4 for members), reserve by phone (01736 752319) or buy online at

www.haylefilmclub.org.uk. Tickets at the door are subject to availability.

All are welcome!

Donna Anton, Chair

01736 753184

**Hayle Rotary
Club Charity
Flower
Presentation**



Last year the Celebrated RHS Floral Designer Jonathan Moseley presented an evening of delights in Truro Cornwall.

The audience was treated to two hours of spectacular flower arrangements. His running commentary was full of advice and

humour about the properties of flowers and greenery. It was enlivened with anecdotes from his life and experiences at home and on television.

Over 100 people enjoyed a free glass of wine, before the event, and bought tickets for the chance to take home



Jonathan Moseley

one of his 15 flower arrangements and other donated prizes.

Hayle Rotary Club would like to thank the local sponsors who made this event possible. All profits from the evening will be donated to local and international charities.



Just before Christmas we had a successful collection for the Cumbrian Water Appeal. This was held outside the Big Pink Tree Flowertime Florists on Penpol

Blue Bay Cafe

Blue Bay Cafe
Sandy Acres
TR27 5BA
07817614152

Gourmet burgers & wraps
Breakfast
Barista made coffees
Delicious home made cakes
Weekend specials
Closed throughout Feb.
Reopen 18th March 2016
Open daily over Easter 10am-4pm

H.D.Framing
Picture Framers

All kinds of art work framed,
from single items to
complete exhibitions.
Fast service at competitive
prices.

Old Foundry Chapel
Chapel Terrace,
Hayle, TR27 4AB.
(01736) 752787
Email dyerart@aol.com

Dave Dobson 

**Building & Property
Maintenance
Hayle Cornwall**

Tel 01736 755964
Mob 07759 233134

**Genuine 24 Hour Call
Out**

dave.dobson@hotmail.co.uk

HARVEY

THE HOLIDAY COACH NEAR THE COAST



**LARGE FULLY ENCLOSED GARDEN
TRAIN VIEWING DECK
SWINGS AND PLAYHOUSE
COVERED CYCLE STORE**

**WWW.RAILHOLIDAY.CO.UK
01503 230783**

Terrace, by kind permission of Mark Nicholas, a Hayle Rotarian. We raised just over £150 on the day and the Club decided for their emergency funds to make it up to £250. This money was sent to the Cumbria and Lancashire Community Foundation via the local Rotary District 1190. This was for immediate funds to help in the disaster that developed even further up to and over Christmas in Yorkshire. We would like to thank the kind people of Hayle for donation towards this appeal.

Just as a note for your information I spent Christmas just north of Leeds and witnessed the floods first hand many houses and properties around the Otley area were flooded. The centre of many towns and villages were cut off by the rising water. Train lines were blocked by water and homes travel was limited by road.

David Raymer

Hayle in Bloom



We had a very good Christmas Auction on 4th December at The Cornish Arms, everyone had a fun time with lots of laughs a very enjoyable evening, our thanks to new owners Hew and Claire and everyone who contributed.

The weather has been so wet we have not been able to get much done, but we have planted lots of daffodils along the verge on King George V Memorial Walk, also around the Millpond which should look lovely in the spring..

We are having to replace some of the wooden tubs in Foundry and Copperhouse this year as they are rotting out, so we are looking for anyone with carpentry/woodwork skills and also someone to paint the new tubs. We would be grateful to anyone who could give us help this year as we are going to be "short staffed" due to two of us going into hospital within the next few weeks,

We have been donated a water bowser by McSalvors in Camborne, which will help with the watering in the Summer (if we get one) our thanks go to them, and also to Dave Dobson.

Last but not least- Very Happy New Year to everyone and let's hope it's another "Gold One"

Contact Lyn Reffold on **01736 752166** if you can help in any way.



Hayle in Bloom is aiming to trial a monthly guided walk

on the King George V Memorial Walk. We plan to start in March through to November, meeting at 10.30am on the first Tuesday of each month – second Tuesday if rained off. Each walk would comprise a Q&A session, garden

ula

CLOTHING & LIFESTYLE

INTRODUCING from March

White Stuff[®]

Along with Joules, EKO, Nomads,
pretty gifts & accessories

01736 755543

Find us at The Old Foundry Chapel,
11-13 Chapel Terrace, Hayle,

 /UlaClothing

www.ula.online



PHILPS
FAMOUS PASTIES OF CORNWALL

Order our Famous Cornish Pasties
online to be delivered to your
door at www.philpspasties.co.uk

Hayle East Quay 01736 755661

Hayle Foundry Hill 01736 753302

Marazion 01736 710332

Praze-an-Beeble 01209 831360



HOSKING ROOFING

- * GRP FLAT ROOFING
- * SLATING
- * TILING
- * NEW ROOFS
- * REPAIRS

Tel: 01736 758458
Mob: 07909 943 098

Bloom volunteers. While not necessarily experts, all the Hayle in Bloomers naturally love gardening, and willingly share what knowledge they do have.

We look forward to welcoming you to our walks. You will find more information nearer the time.

* * * * *

tips, a guest speaker, Plant of the Month, and a walk discussing/naming plants growing on the Walk. There will be a charge of £2.50 per person. We suggest you bring a notebook/pen/camera if you attend.

The walks will be led by Olivia Pellow, Head Gardener for Cornwall Council in Hayle, when she is available, and various other Hayle in

We are still looking for a new name for what was previously known as Hayle in Bloom Celebration Day. We have had four suggestions so far: King George Gala Day, Blooming Hayle, Hayle's Very Own Eden Day and Hayle Heyday. The Pump is willing to award £20 for the best name if it is adopted for the event. Send to usual Hayle Pump drop off places.



ccc
CORNWALL CHIROPRACTIC CLINIC
— maintaining your lifestyle —

www.cornwallclinic.co.uk
enquiries@cornwallclinic.co.uk
01736 759088

Providing minimal costs and maximising recovery times. Our practitioners are all highly qualified, covering chiropractic, sports massage, reflexology, chiropody/podiatry, hypnotherapy, nutrition, acupuncture and yoga.

What we offer is a safe, evidence-based healthcare that will support you well into your later years.

21 Foundry Square, Hayle, Cornwall TR27 4HH



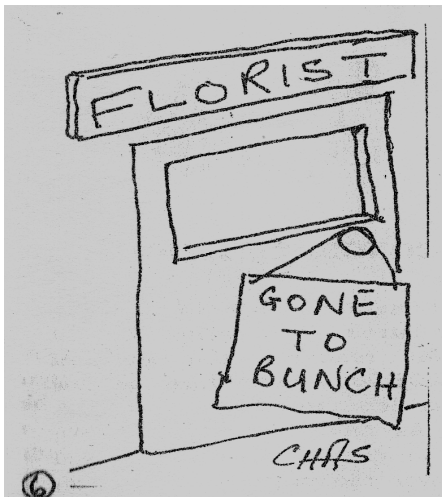
Slide show talks

The recent **Battle of Britain** talk at the Passmore Edwards was very well attended with latecomers having to stand. This was a 75th anniversary event and therefore not the usual subject or content that included Cornwall, although Hayle's part in the production of High Octane fuel was covered.

My thanks to 'helpers' from the Old Cornwall Society and Hayle residents association who organised seating and dispensed refreshments. A special 'Pilot Quality' batch of congress tarts was organised by Mr and Mrs Smitheram and were soon cleared out by the audience.

My next talk 'Over Cornwall' will be at the Hall for Gwinear on the **27th Feb** and will cover the Cornish coast plus the Hayle Harbour area in some detail.

The Dynamite works on the Towans and the mining area around Camborne are included in this talk.



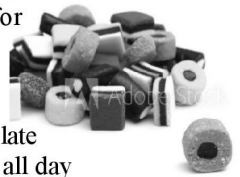
Welcome to Castaways Pre-loved Boutique selling an extensive range of quality label ladies clothing, shoes and accessories. Buying and selling your 'nearly new' garments on commission is easy and we are on hand to book in your clothes, bags and accessories. Make money on your once cherished garments, it's so easy.

Castaways, the dress agency that does business in style.

***Upstairs at the Gallery Coffee Bar,
1 Chapel Terrace Hayle TR27 4AB
(by the viaduct)***

The Gallery Coffee Bar
Bunny & Amanda wish everyone a Merry
Christmas

Pop in and see us for
Great Coffee
Breakfast rolls
Lunches
Luxury Hot Chocolate
Bacon rolls served all day
Soups, jacket potatoes and paninis.



We now sell a large range of traditional sweets in old fashioned jars including sugar free. Pick 'n' Mix for children. Sherbet pips, Coconut mushrooms, Bon Bons, Army & Navy Liquorice & much, much more.

Dogs are welcome
1 Chapel Terrace, Hayle.
(by viaduct) 01736 756829

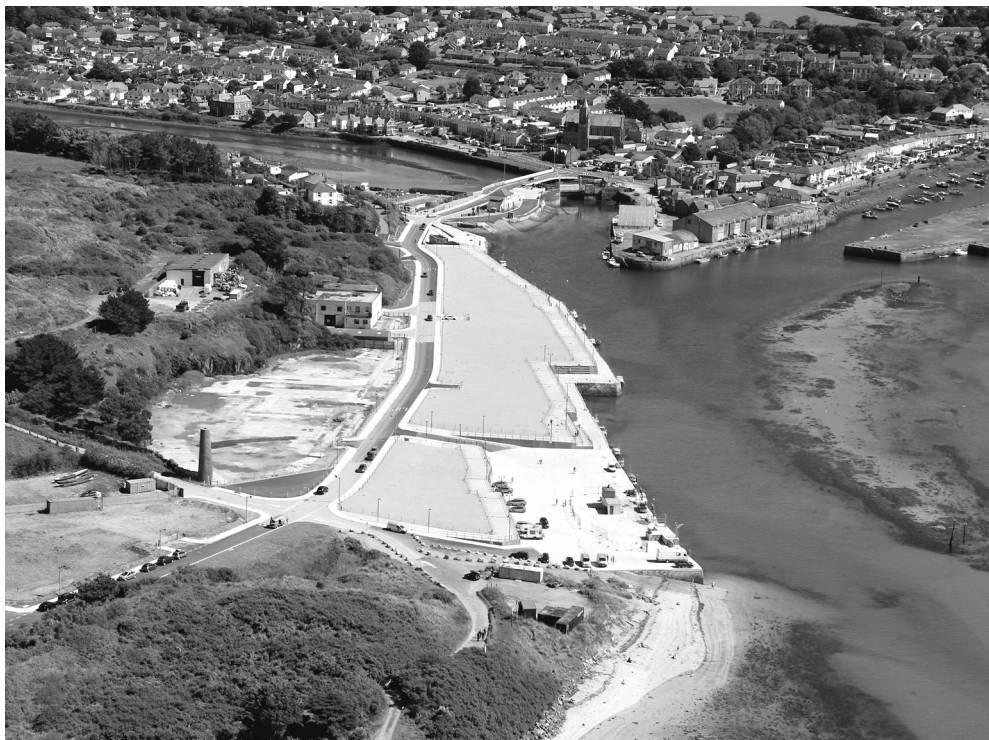


Changing Face of Hayle

Above are two images that cover six decades of change. The old 'Octel' site has been finally cleared; with the coal stocks for the power station being a distant memory, although the stables at the far end remain. The small chimney on the old Octel site still stands having started life as part of the Pentowan arsenic works and then used for the glass factory. The old power station site has been cleared ready for the new business park units (now built), but a link remains with the new Wave Hub generation connecting point. East Quay has lost the Gas Works, but the swimming pool has emerged in the corner of Copperhouse pool near the

original Rail swing bridge; which itself is now 'sandwiched' between the sluice gate and the new road bridge. Along Hayle Terrace the quay basin has been filled; subsequently to become part of the Hawkins Motors location and now for new build housing. The quarry oil depot has departed to be replaced by boats and fishing equipment. North Quay stands ready to accept its new challenges but it can be proud of its former use as a major part of the industrial revolution, the site of an important power station, and its part in giving the RAF a boost for its engines at a time the Country was under great threat.

Peter Channon



St Erth & Hayle Cars



4 - 8 - 16 Seat Vehicles
8 & 16 Seat Party Buses
Polite, Friendly Staff

Wheel Chair Friendly
Vehicle now Available!

Call us on 01736 754000 or 754040
WWW.STERTHANDHAYLECARS.CO.UK

Home & Garden Maintenance



Painting & Decorating
Carpentry, Glazing,
Stained Glass
Shelving, Doors
General Repairs
Alterations Etc.

Appliances Installed
Furniture Assembly
Flooring, Fencing
Gates, Decking
Hedge Trimming
Pruning Etc.



Seymour & Jago

33 Commercial Rd,
Hayle TR27 4DE

Local & Experienced
No Job Too Small

07813 324880 - 01736 756821

High Octane Hayle

(How it helped the RAF)

The afternoon of the 1st May 1942 found pilot Tony Bartley at 30,000 ft over Lille in France as part of a Spitfire squadron providing top cover for an offensive operation.

Normally this height would have provided them with a tactical advantage but on this occasion they were attacked from above by a number of the latest German FW 190 fighters.



For the next 20 minutes a pitched battle raged that took the

aircraft down to sea level with Bartley attempting to shake off several of these new high performance fighters.

With cannon shells now hitting the water around him it appeared that even though he could outturn his opponents he could not outrun them across the Channel, but when all seemed lost one of the 190,s overshot his attack and pulled up in front of the Spitfire.

Seeing an opportunity to reduce the odds Bartley slammed the throttle into emergency override boost, pulled up into a 'prop hanging' climb, gave the 190 a short burst of cannon fire as it crossed his sights and promptly sent it spinning down into the sea.

This aggressive move paid off as

PASSMORE EDWARDS INSTITUTE



MEETING ROOMS FOR HIRE

Hayle's Village Hall
has rooms for 2 to 60+
Children's Parties
and Catering

For more information:

WWW.HAYLE-PEI.ORG.UK
bookings@hayle-pei.org.uk

Or call: **07784-377576**

13-15 Hayle Terrace, Hayle, TR27 4BU
Charity Number 268429

Heidi Bows BSc AAT MIP

Accountancy & Book Keeping
Services

Fully licensed, regulated & insured.
Year end accounts. Self assessment tax
returns. Book keeping services. Good
rates and fixed prices. Collection &
Delivery service.
01736 756322 07799367197

the other enemy aircraft broke off
and Bartley was able to limp back to
Biggin Hill with his damaged
machine.

His survival was due to several
factors; his skill, the Spitfire's
legendary manoeuvring ability, and
the Rolls Royce Merlin engines
ability to give an emergency combat
boost of extra power.

Another factor was the engine's

**ability to provide this extra power
without destroying itself, with a
critical part of the High Octane
fuel required for this, being
produced hundreds of miles away
on a quayside at Hayle in
Cornwall.**

In 1938 The British Government
took the decision to secure future
supplies of High Octane aviation fuel
that was a vital requirement for the
new high performance aircraft
engines then coming into service.
Limited supplies of this fuel had
been obtained from the USA but it
was considered that with a potential
war looming this supply was
vulnerable to disruption and a
national production capability was
required.

Two of the main additives to be

CLIFFORDS

Plumbing & Heating

Boiler Changes - Full central heating - Servicing - Landlord Certificates
Dripping taps to complete bathrooms - All plumbing work undertaken
Free quotations

Local, Reliable, Clean and friendly service

01736 755170

07761 938183



Fully Qualified, Gas safe Registered and Water Industry Approved

www.waterworkscornwall.co.uk

Natural & Organic Therapies

~ Clare Mungles ~



Massage

Hot Stone Massage

Warm Bamboo Massage

Indian Head Massage

Organic Beauty Facials

Body Brush/Scrubs

Reflexology

Foot Pamper Treatments

claremassage@yahoo.com

www.naturalorganictherapies.co.uk

*** Gift Vouchers available ***



**Like and follow on Facebook
for updates and monthly
special offers**

077897 60387

Appointment Only

9, West Stables
Foundry Farm, Foundry Lane
Hayle TR27 4HD

added to the best petroleum spirit to give it a "High Octane" value were Tetraethyl Lead (TEL) and Dibromoethane. (DBE).

In practice it meant that engines could be run with a higher compression ratio and also be supercharged for more power.

The decision was made to produce DBE at North Quay Hayle using the warmed cooling water from the power station (Cornwall Electric Power) as the main supply to extract bromine from seawater. In fact the Power Station was heavily involved in providing both the basic input structure plus the warmed seawater.

Therefore Hayle became one of the main producers that provided the High Octane fuel additive for most of our aircraft including Hurricanes, Spitfires, Lancasters and Mosquitos.

Having provided this most important product since 1940 the plant closed in 1973 and most of the site was cleared.

Technical details

The advantage of using High Octane fuels in service aircraft meant more power could be obtained from the new engines (by boosting) without the old problems of "detonation" (pre-ignition or pinking).

It was found that the addition of a lead additive in fuel would provide this result but also caused fouling of the spark plugs and valves. The blending of DBE as a cleaning agent with the TEL enabled the engines to run at high power without fouling. The importance of this High Octane

situation was clearly demonstrated by the ability to eventually nearly double the power of a Merlin engine by extra supercharging and mixture cooling without increasing its capacity. By comparison the engines in the German aircraft were larger and heavier for a given power output.

PRAZE HAYLE MALE CHOIR

Praze Hayle Male Choir ended another successful year with two carol concerts held in the Methodist Church in Troon on Tuesday 1st of December and at St Elwyn's Church, Hayle on Saturday 12th. Both concerts were well attended and enjoyed by choir and audiences alike.

The choir is now well into planning for this coming year's programme and it is expected that the, by now traditional, open air concerts in Hayle and Porthleven will play an important part of our summer activities.

On Sunday March 13 at Phillack Church the choir will be presenting a concert in memory of Stuart Harris, ex Mayor of Hayle and a founder member of the Hayle Choir, who passed away recently. This Memorial Concert will be free on entry, it will commence at 7.30pm and there will be a retiring collection.

Our choir is always keen to welcome new members experienced or not, able to read music or not, and anyone interested can phone the Secretary, Don, on 01736 757720.



Fully Managed Property Letting Service.

We can advise on landlord's responsibilities such as: Energy Performance Certificates, Electrical Safety, Gas Safety Certificates, Landlords insurance. We will set market rental, find tenants, obtain references and much more.

Call Derek Penny or Chris on
01736 755077

**20 Fore Street, Copperhouse,
Hayle, Cornwall. TR27 4DY**
email: camprops@btconnect.com



HYDRO BATH BLOW DRY
BRUSHING NAIL CARE
EAR/EYE CARE FLEA TREATMENT
DEODORIZE CLIPPING.

ALL NATURAL PRODUCTS.

PH 07903 042950

Lesley 01736 850971

E-mail lesleyandkeith@msn.com

City of Guilds Trained

We rehearse at the Methodist schoolroom, Hayle at 7.30 pm every Tuesday evening.

HEYL ST PIRAN SINGERS

After a busy and successful 2015, the choir is now looking forward to the new year with enthusiasm. There are new songs to be learnt and new concerts to look forward to, and possibly, as last year, weddings to be sung at; so for any ladies who enjoy singing now would be an excellent time to join this friendly and supportive choir.

Singing is thought to have health benefits; it is certainly a very rewarding and sociable activity. So please don't be shy, there are no

auditions and there is a very wide range of music, popular, sacred, songs from the shows, madrigals, in fact something to suit all tastes. New members are made very welcome, so why not come along to one of our rehearsals on a Thursday evening at Hayle Methodist Church Hall from 7.30 to 9.30?

For more information you can ring **Ann on 01736 752335.**

New Business Opens –



Welcome to Wellydog

Wellydog Handmade is a husband and wife run business, which has been operating for over four years and was initially set up after Janice was made redundant.

I worked out of a small studio in Clevedon Craft Centre in North Somerset. Steve joined the business a year ago after leaving behind a successful career in TV finance, and we then decided to move the business to Cornwall to fulfill a life-long dream.

When we had the opportunity to

ANGOVE

SPORTS

COPPERHOUSE,

HAYLE.

Tel(01736) 752238.

**For all sports equipment,
clothing, footwear
and fishing tackle.**

**Rackets repaired
and restrung.**



move into Penpol Terrace in Hayle we jumped at it, we felt it was the right place for us as Hayle has such a creative vibe about it. We loved the idea of being in a street with lots of other independent traders and Penpol Terrace and the Foundry Chapel certainly have their fair share of those.

After nearly 34 years of marriage we now enjoy spending more time and working together.

Everything in the shop is handmade, the majority of it by us. We have beautiful leatherwork including belts, boxes and handbags, carved with unique patterns and designed in house. We can also be found scouring the beaches with our collie dog, Fin, to find seaglass and pottery that we make into jewellery.



Emma's Helping Hands
Cleaning/Pet sitting/Dog walking available.
Fully insured.
01736 363069 /07887 721719
Also on Facebook

Our latest range incorporates this into resin to make 'Rock Pool' Jewellery, each piece is totally unique. Janice paints and continues to teach art, and later this year hopes to take people out and about in Hayle, to give them confidence to paint outside.

Anyone who has visited us will realise the shop is tiny but we feel it is perfectly formed. We are also not



17th
BS7671 edition

Webb & Philp Ltd

electrical contractors



All aspects of Electrical work undertaken

Free Estimates. No Job Too Small.

Prompt. Reliable. Fully Qualified. Est 1972

www.webbandphilp.co.uk

Tel/fax 01736 753651 Mobile: 07419 376882

Email:electricians@webbandphilpltd.co.uk

- ✓ Re-Wires
- ✓ Security
- ✓ Showers
- ✓ New Build
- ✓ Testing
- ✓ Maintenance
- ✓ PAT Testing
- ✓ Extra Sockets & Lights

Des Button
SPRINGFIELD
33 Clifton Terrace
Hayle TR27 4BP
ELECTRICAL
SERVICES &
SUPPLIES

01736 753211



PART P
REGISTERED



fully stocked yet, we still have some beautiful silver jewellery and glasswork to come very soon. All handmade made by some very talented people. We also hope to source more local handmade items as the year goes on but want to make sure the main focus is on our work. We will strive to deliver a great customer experiences along with unique and individually designed leather and jewellery pieces at high street prices.

Contact us for details at wellydog@btinternet.com or phone 07702090684. We can also be found on our website www.wellydog.co.uk

Hayle & District Lions

Café Riviere

Across Hayle's Jubilee Bridge

Serving a variety of hot food, late breakfasts, drinks, ice-cream, cream teas and snacks.

- *Indoor and outdoor seating.*
- *Take-away is available.*
- *Open all year.*
- *Next to the public open-air swim pool, sub-tropical gardens, promenade and nature reserve.*



**THANK YOU,
THANK YOU,
THANK YOU.**

Hayle & District
Lions would like

to thank all those wonderful members of the public who generously gave to their Father Christmas sleigh at the Hayle supermarkets and during their trips round the streets of Hayle during the Christmas festivities.

Father Christmas gave out hundreds of sweets to children of all ages and the sleigh played wonderful Christmas music which had a lot of the shoppers and

members of the public dancing round the sleigh. Even Father Christmas was rocking on his sleigh thoroughly enjoying himself. The atmosphere where ever the sleigh went was brilliant.

The amount donated by the public during these festivities was a staggering £1601. This together with the Christmas Hamper raffles from the local pubs in Hayle and the surrounding area gave Hayle & District Lions a grand total of £2269. This amount has been deposited into their Charity Account which is used to help and assist both individuals and organisations in the local area.

Hayle & District Lions sends a special thank you to ASDA, Coop, and Lidl's for allowing them to collect at their stores, and the local pubs (Watermill, Old Quay House, White Hart, Cornish Arms, Copperhouse, Cornubia, Turnpike and Red River), for selling the raffle tickets for the Christmas Hampers. Without their help Hayle & District Lions could not raise such a fantastic amount. Every penny raised goes to the many good causes.

Hayle & District Lions are busy planning their activities for 2016. Current events and dates are as follows:

February 14th - Fun Dog Show at Goldsithney Village Hall commencing at 12:30

February 23rd - Fun Quiz Night at Old Quay House commencing at 7:00pm

March 25th - Easter Egg Raffle

Draw at the local pubs in Hayle
August 7th - Hayle Lions Fun Day at Hayle Recreation Ground commencing at 10:00

For more details on these events please read the weekly column in the Cornishman, "Down Your Way" under "Lions and Rotary", or visit the Hayle & District Facebook page.

If anyone is interested in joining the Lions or would like to help at one of our many events, either phone John on 01736 752721 or come along to one of their meetings at the Passmore Edwards Hall in the middle of Hayle on the 2nd Tuesday in the month at 7:30pm. The meetings are not formal, the members are not stuffy, they have a good laugh, enjoy themselves and raise lots of money for good causes.

The Big Pink Tree
Don't Forget
Valentine's Day 14th Feb
&
Mother's Day 6th March
Fantastic range of
Greeting Cards
Gifts for All
Locally Made Crafts
Jewellery
Purses & Bags
& much much more.
17 Penpol Terrace
01736 757006
www.thebigpinktree.co.uk
#ShopHayle
shop local & save the High Street

Hayle Carpentry Services

Home improvements.

All your carpentry needs.

**Design and build wardrobes
and alcove units.**

**Laminate and solid timber
flooring.**

Decorating and tiling.

Call Chris 07988 611 988

**5a Bodriggy
Street Hayle**



THE FARM SHOP

**31 Penpol Terrace, Hayle,
TR27 4BQ**

**Open 6 days a week
8am—5pm**

**FOR ALL YOUR LOCAL
PRODUCE**

**Fruit, vegetables, plants, flowers,
free range eggs, and Cornish
potatoes**

**NOW IN
Primroses, local daffodils
and Valentine Flowers**

**Being
Showered
Courtesy of
Network Rail**



Do you walk across to ASDA from Penpol Terrace using the pedestrian crossing? If so be sure to take a sturdy umbrella with you because as you near the viaduct gallons of water pour down driven by the wind, soaking the unwary! If you look up under the bridge there appear to be a number of 4 inch pipes sticking out, not connected to any form of down pipes, from which water gushes out, even long after the rain has stopped.

It appears as though the contractors did not quite finish the job. Councillor Coombe has been made aware of this and is on the "case" so to speak. However if you are concerned about lack of progress please make your views known to the relevant authorities.

There is the question raised before about the reinstatement of the Isis garden, which was brutally ripped out by the contractors to repair the viaduct, and which has been left as an eyesore ever since, with plastic bags paper and

other detritus snagged in the fencing which is neither up nor down. The gardens are owned by Cornwall County Council which requires planning permission for anything to take place. The last plan was rejected, so all interested parties are to get together to hammer out a solution. Some money has been made available by ASDA, CCC, and the contractors, but nothing will happen soon.

On another issue which has been mentioned in the pump some time ago is the actual pedestrian crossing itself. Try crossing after a



*downpour. **Both sides** of the crossing have huge puddles, the cars spraying the water over anyone standing waiting for the lights to change. Sir Walter Raleigh's cape would never stretch to afford a lady a dry crossing! This problem may well have been resolved by the time the Pump is out, apparently the work schedule was put back, but after councillor Coombe checked it may be reinstated, but don't hold your breath.*

LINDSAY'S DOG GROOMING

*Dog grooming for all sizes,
breeds & coats.
Specialising in Poodles.*



For more information,
contact Lindsay on
01736 753864 or 07792 849240



<i>Situated at</i>	<i>Local</i>
<i>Connor Downs</i>	<i>collection</i>
<i>in Hayle</i>	<i>& delivery</i>

HANDYMAN EXPERIENCED & RELIABLE

"NO JOB TOO SMALL"

**Completing all those jobs
you've been meaning to do!**

**Painting / Decorating
Repairs / Flat-pack Assembly
Fencing / Sheds**

**CONTACT
RICK HARVEY
01736 752811**

Council Corner



2016/2017

Precept Demand

The Town Council's Precept will increase this year by 2.72%, which equates to a £3.23 increase per Band D property compared to last year. The final Precept for 2016/17 is £316,835.

The explanation for the increase is largely due to inflation across the board and partly as a result of the government agreeing a two year pay deal which means that those on lower grades receiving an increase of 6.4% in 2016 followed by 3.5% in 2017. These increases are part of an aim to meet a living wage target

by 2019.

Devolution and Community Asset Update

The return of the sites will definitely take place by April 2016. Hayle Town Council is looking forward to the completion of the refurbishment works that are currently taking place in readiness for the transfer. It has been good to work in partnership with Cornwall Council and CORMAC and the Town Council has been happy to provide money from its own reserves to enhance the surfaces of the football pitch, tennis courts and the safety surface in the playground area in the Recreation Ground. We apologise for any inconvenience any of the works may have caused which have taken much longer than anticipated due to the wet weather.

JC ELECTRICAL

Your complete 24 hour Electrical Service

**Rewires • New Build • Lighting •
Showers • Extra Sockets • Heating**

City & Guilds Qualified (Tests to BS7671)

Part P registered

Prompt and reliable friendly service

Free estimates and all work guaranteed

Office: 01736 754543

Mobile: 07739 577549



Registered through: NAPIT

ZIP INN

**Repairs & Alterations:
Soft Furnishings: Loose**

Covers

Pat 0797 973 0738

Hayle

The Town Council is currently advertising to secure a contractor for the maintenance of all of the Council owned/managed sites. Please look in the local press, the Town Council's facebook page and website for details. The contract has also been promoted on <https://www.gov.uk/contracts-finder>.

Annual Citizens and Organizations of the Year

Nomination packs will soon be available from the Town Clerk's office for the Citizens and Organisation of the Year Awards. The Council is also seeking nominations for Hayle Young Person of the Year and Hayle Youth Organization of the Year. The deadline for all nominations will be Friday 15 April 2016

Hayle Community Centre

Space is available for regular sessions or one off bookings. Remember that the CAB, Link into Learning and others hold regular sessions and surgeries. Contact the Town Clerk for details of services and available space.

WEST CORNWALL MOBILE FOOT CLINIC

For the professional
treatment of:

Corns & Callus

Diabetics

Verrucas

Athletes Foot

Thickened Nails

Fungal Infections

Ingrowing Toe nails

Can't cut your own nails

**All in the comfort in
Your own home**



Peter Williams

S.A.C.Dip FHPT/FHPP

Tel: 01736 751752

Mob: 07901 803493

Evening and weekend calls available
pwpetewilliams@googlemail.com

Town Diary

If you know of or are involved with organising any community events please forward all relevant details, including points of contact, to the Town Clerk so that they can be added to the calendar which may be viewed on the Town Council's website.

**Hayle Town Council
Hayle Community Centre
58 Queensway**

Hayle

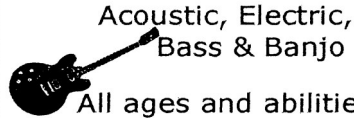
TR27 4NX

01736 755005

townclerk@hayletowncouncil.net

www.hayletowncouncil.net

GUITAR LESSONS



Acoustic, Electric,
Bass & Banjo

All ages and abilities
All styles folk/rock/pop

Phone 01736 753709

Mobile 07866 372715

Tots About

Tots About has recently become a social enterprise with The Cornwall School of Social Entrepreneurs and is a free quarterly local magazine for pregnancy to age 5 children, basically a guide for bump to 5.

Tots About aims are to bridge an isolation gap often experienced

Computer / Laptop Problems?

I can restore your computer or laptop to full working order for a fantastic price

NO CALL OUT CHARGE

Professional repairs and maintenance of full systems and networks

Call today for a FREE no obligation quotation

**PC REPAIRS • PC NEW BUILDS • PC REBUILDS •
PC UPGRADES • PC TRAINING • DATA RECOVERY •
NETWORK INSTALLATION & MAINTENANCE**

For a prompt and reliable service
call Tim Cogher at TeeCee Tech today



07730 283433



01736 850798

when parenting under 5's, connecting local people and organisations through a one stop resource and information hub. It keeps readers in touch with baby/toddler groups, classes, businesses and services within West Cornwall. Just over 13,000 copies are now distributed directly to all pre-schools, nurseries, reception children in all primary schools, the maternity ward at Treliske, baby sales/car boots and markets, baby/toddler groups, doctors surgeries, health centres, health visitors, independent midwives, children's centres, leisure centres, libraries, soft play centres, garden centres, cafes, PO's, relevant shops and popular child friendly cafes, baby events and well known child friendly hotels.

Key features include discounts for readers, informative information, detailed area timetables listing both baby/toddler groups through children's centres, church groups and parent led groups as well as listing private clubs and classes to attend for both mother, baby and child, professional advice and contacts; plus a directory of relevant businesses, competitions, vouchers and a paediatric first aid section. Tots About supports local charities including the Children's Hospice, parenting/birth groups, and Outlook SW. Katie took a huge leap of faith when she produced the first issue in Spring 2013, but with great support from local businesses "Tots About" has gone from strength to strength and can support even more



ProudPaws

Dog Walking and Pet Care

Covering St Ives, Hayle, Camborne, St Erth and surrounding villages.

01736 438068 / 07811 595088



proudpawsdogwalking@gmail.com
www.proudpawsdogwalking.co.uk

charities, support groups and local events.

To see the current and past copies visit

www.totsabout.co.uk and follow them on fb look out, tots about.

If you would like to be a distribution point for the magazine then contact **Katie@totsabout.co.uk**

	<p style="text-align: center; margin: 0;">NORTH WARD</p> <p style="text-align: center; margin: 0;">John Pollard</p> <p style="text-align: center; margin: 0;">www.djpollard.co.uk</p> <p style="text-align: center; margin: 0;">07967 272808</p>
<p>CORNWALL COUNCILLORS FOR HAYLE</p> <p>Contact us directly or through the Hayle One Stop Shop where we hold surgeries on the 1st Saturday of each month</p> <p style="font-size: 1.2em;">0300 1234 100</p>	
<p style="text-align: center; margin: 0;">SOUTH WARD</p> <p style="text-align: center; margin: 0;">John Coombe</p> <p style="text-align: center; margin: 0;">01736 752831</p>	



Millpond Update

As 2015 passed almost seamlessly into 2016 with its mild, wet and windy weather, regular visitors to the Millponds will have noticed that we are missing someone very special. In my previous update I reported that Freya, our female swan, had been unwell. She seemed to be recovering, but just as it appeared that we were winning she took a turn for the worse and we lost her.

Our worry was what might happen to her mate, Odin, because they had

been a close pair, but he has come through it all better than we had dared to hope. They had always had a group of ducks around them including the Cayugas and the Khaki Campbells which seem to have provided him with a ready-made family to keep him company and protect him. This has brought him through his loss, but whether he will stay with us after the winter we can only wait and see.

Our unfortunate saplings have now been removed. If they are eventually replaced we can only hope they will do it properly this time. We did lose a tree along the leat due to the high winds, but to my amazement the ash tree at the top of the Rope Walk is still managing to survive. It will have to come down

TJ'S CARPETS LTD.



**New Showroom at Tolroy Garage,
58 Mellanear Road, Hayle TR27 6HF**

Come and see our wide selection of carpets & vinyls,
laminates and patterns

Our famous home selection service still available

Full range of flooring accessories

Call Now! 01736 757540 or 07976 608215

Free measuring & estimate service

"Before You Buy, Give Us A Try"

eventually because it was infected with the virus. It is on the list for the Forestry Department when they next visit the Millponds.

The planking on the river bridge was in need of repair and it has now been completely resurfaced. It is a far better surface than it was before and with a bit of luck it should last a few years before it will need to be worked on again.

The mild weather has encouraged the grass to grow in Millpond Gardens and as it is not usually cut during the winter we might need a flock of sheep to keep it under control until the mowers move in again, otherwise the grass will be up to our knees.

Thank you, Hayle Decorative Lights, for the lovely display of Christmas lights around the Upper Pond.

*Georgina Schofield
Volunteer Wildlife Warden*

The Strumalongers are at it again



If you walk past the Passmore Edwards Institute in Hayle on Wednesday nights

you could be thinking that a big band is belting it out inside.

With a few old jazz classics to begin with, Mack the Knife, The Lady is a Tramp and then onto some Rolling Stones with Brian and Andy beating



The Mad Hatter

Bed and Breakfast Open all Year !
Rooms overlooking Copperhouse Pool.

Full English Breakfast,
Competitive Rates.

*Relax with a Scrumptious Cream
Tea or Homemade Cake in the
Café or Tea Garden.*

Opening Easter from 10am—4pm
Monday to Sunday.
Closed Tuesdays.

73 Fore St Hayle TR27 4DX
01736 754241 0787 1165381

[www.cornwall-online.co.uk/
madhatter](http://www.cornwall-online.co.uk/madhatter)

Dogs Welcome



TP Wills & Probate.

Wills and estate planning
consultant.

**“Where there is a will there is a
way to protect your family”**

***Concerned about losing assets
for care costs?***

Call Tim Poole

01736 755125

or 07900 323939



**ROLL BACK THE YEARS!
COME TO
SHADES OF GREY.**



**Movement to
Music for Older
People**

**ENJOY FRIENDSHIP FUN &
FITNESS WITH A QUALIFIED
INSTRUCTOR.**

Hayle Passmore Edwards	Mon 10-11am
St Ives library	Mon 2-3pm
British Legion Heamoor	Wed 10-11am
Leedstown Community Hall	Wed 2-3pm
Hayle Passmore Edwards	Thur 10-11am

£4.00 per session.

Info Sylvia on 01736 757560

out some incredible lead 'licks'. We all try to bring in the music that we enjoy and join in to give it a go. Steve brings in some great songs from the Irish folk rock scene, "everybody likes a bit of Irish" somebody once said, was it Phil somebody? John then gets us into a bit of fingerstyle guitar 'he knows his stuff'. Bob has a great library of bluesy rock for us to work through. Such a great night and it lets you get out of your box and learn something new and fun at the same time. This prepares you if you want to join in on a jam – night and you are a bit hesitant about getting up and playing with others, you just bring down the songs that you want to do (with a few copies for the rest to play through with you) and with no pressure, so you are relaxed as you build up your confidence.

Come on down and give it a go. On the playing side we are looking at gigs to be arranged at memory cafés and a possible hospital gig.

Indoor Car Boot Sales

I am holding a weekly indoor car boot at Phillack Church Hall on Sunday February 7 and then every week until weather is good enough for outdoor car boots - hopefully in March. Tables at £5 are bookable in advance by phone to Sharon on 0786 822 5966 or email muffinsetc@gmail.com. Doors open 9 to 1. No entry fee but donations to Breast Cancer Now will be gratefully received.



IF I HAD A
flower FOR EVERY TIME
you MADE ME
smile & laugh
I'D HAVE A
garden TO
WALK IN
forever

**Make Someone's Day
Send flowers today.**

FlowerTime @ The Big Pink Tree
01736 757006
www.wesendflowers.co.uk
#ShopHayle

Letters to the Editor

I am writing in answer to the lady named Lynne Harper in the October/ November Pump about her idea of the dog area on the recreation ground. The field is not big enough for the many dogs that use it now. I don't think she has given any thought for my neighbours and myself who live in the bungalows at the spot she suggest. We have to clear up dog mess outside our gates every day. We don't want a larger dog dirt bin, stinking outside our places. I would like her to meet with me so I could say to her what a dirty stinking idea hers is. A man was fined £75.00 for refusing to pick up his dog's mess. Notices like this

should go up all around the field. That should make dog lovers think twice, and by the way, I do like dogs, and in hot weather put water out for them.

Mrs F Smith

ASDA is not so awful.

I beg to disagree with Mr Jones in your last issue about the ASDA building. It could have been a lot worse, some ghastly warehouse/ shed instead of the award-winning building that we have there now. Maybe one day it could be a cinema/ theatre/ art gallery instead of being occupied by a supermarket.

J. Shepherd

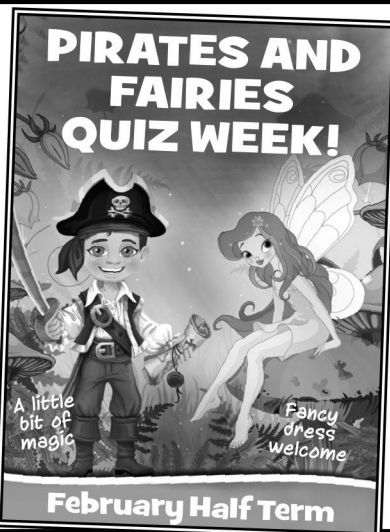
WONDERFUL WILDLIFE AND INDOOR PLAY AT PARADISE PARK!

Cornwall's award-winning wildlife sanctuary with fantastic JungleBarn indoor play.

Open every day at 10am

- Roast Lunches
Tuesday, Thursday & Sunday
- Themed birthday party rooms
- Park & Gift Shop
open 10am - 3pm
- JungleBarn open
10am - 6pm
(Tickets for JB only from 3pm)
- Return Tickets £3.50

JOIN US ON FACEBOOK
'ParadiseParkCornwall'



PIRATES AND FAIRIES QUIZ WEEK!

A little bit of magic

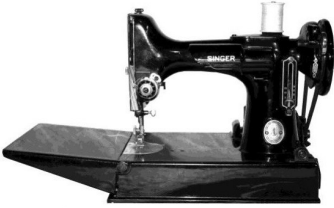
Fancy dress welcome

February Half Term

Paradise Park, Treilissick Road, Hayle

Open every day at 10am Infoline: 01736 751020 www.paradisepark.org.uk

SEWING MACHINE REPAIRS



**All makes serviced
including Singer & Pfaff.**

Drop off point at
Harbour Store
28 Penpol Terrace, Hayle.
(Ex Bigglestons)

**Tel 01736 753811
0776 666 2908**

PAUL SHERRIS

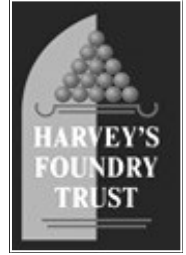
Hayle's only
local family owned
**FUNERAL
DIRECTOR**

**Private Chapel of Rest
Pre-Payment Plans
available**

**West Terrace, Hayle.
TR27 4JS.**

**01736 753969
Day or night**

Hayle Heritage Centre Exhibitions



This winter we are working on themes for a new exhibition for our Spring opening and are looking for volunteers interested in researching the fascinating history of the Foundry and industry in Hayle. We would also like to hear your recollections of the Foundry site, buildings and businesses in more recent times.

Our next exhibition will feature the history of Harvey's shipbuilding on South Quay. We would also like to update our story to the twentieth century. For example, we have a photograph of a tanker making a delivery to the harbour in the mid-1970s and would be interested to hear from anyone who could tell us more about this.

We are also researching J&F Pool and will be posting some images from the workplace on our Facebook site and on Nostalgic Hayle. Look out for the photographs and let us know if you recognise any of the people featured.

If you have any photos, newspaper cuttings or artefacts on any of the subjects mentioned, or if you or a relative, are interested in sharing your stories with us, please contact Hayle Heritage Centre.

Lastly, get in touch if you would like to help run visitor services at the Heritage Centre when we re-open at Easter. You can volunteer for a

minimum of 3 hours upwards and training will be provided. Our opening hours are 11am-4pm on Mondays, Wednesdays and Fridays and we would like to be able to open on Saturdays - the more volunteers we have, the more hours we can open.

Hayle Heritage Centre

01736 757683

**enquiries@harveysfoundry
trust.org.uk**



**Marlow
Madness
Inflatable
Hire**

07873 941208

marlowmadness.inflatable

hires@yahoo.com

On Facebook/Hire from £65

The Sunshine Home for Blind Babies

We grow and sell plants for a charity which caters for **Blind Babies** and whilst our plant sales are concentrated in the Spring and early Summer, we also have some for the Autumn and Winter. All overheads are borne by us and every penny is sent direct to the Home/School that caters for these unfortunate babies. We also do a charity prize quiz and information is available via our email address or telephone :

01736-763852

rnbecknel@btinternet.com

Rosewarne Manor Restaurant

Gwinear Road, Connor Downs. TR27 5JQ



01209 610414

Book early for Valentines
(special menu 13th & 14th Feb)

& Mothers Day 6th March
(serving all day).

Murder Mystery evenings on
12 Feb, 11 March, 23 April.

Try our Sunday Carvery
Call to book & for full details.

Function rooms for all occasions
www.rosewarnemanor.co.uk



HAYLE DAY CARE CENTRE

Commercial Road, Hayle

An affordable day care facility for the elderly of Hayle, St Ives and district

Transport • Freshly cooked meals

Also includes bathing and hairdressing
Therapy and lively social interaction

Always a friendly welcome

Call 01736 755000



Lawrence Butcher Chimney Sweep

**Brush n Vac, Cowl fitted,
Camera Inspections, Solid Fuel
Servicing & Repairs. Carbon
Monoxide Alarms fitted**

**Enfield Farm, 30 Hayle Rd ,
Fraddam, Hayle TR27 6EH**

01736 850033

07966 547829

loloubutcher@aol.com

A warm welcome from Hayle Library, One Stop Shop & Tourist Information Centre.

As you are probably aware, there may be changes afoot, currently we are in the dark about our future, but please note that the more people that use our service the more likely we are to remain open.

The mobile library service has already been dramatically reduced, however we provide a home library service for any customers that are housebound. There is a fantastic team of volunteers who choose and deliver books to our housebound customers. If you would benefit from this service please get in contact with us and we can organise this for you. 0300 1234 111 and ask to be put through to Hayle library.

We also have computer access available for our customers and visitors with printing and photocopy facilities. We have a range of e-Books, e-Audio books and e-Magazines that are accessible to all our Cornwall library members.

Due to the growing number of services now being accessed online, basic free computer classes take place at the library over a 4 week period. The classes last for 2 hours on a Tuesday when we are shut and are for complete beginners. If you are interested please ask one of the library staff for more information.

The 'Bounce and Rhyme' session

for babies and toddlers is on Wednesdays at 10am & 11am and 'Storytime and Fun' for the slightly older children has moved to a Friday afternoon at 3.45pm.



Hayle Chapter & Verse meet in the library on the 1st Wednesday of the month from 2-3pm so please come along if you fancy joining the group.

The U3A writing group still meet in the library every other Thursday when we are closed so if you are interested in joining just ask one of the team at Hayle

Got a local issue you wish to discuss? Cornwall Councillors John Pollard and John Coombe hold a drop in surgery on the first Saturday of every month from 10am – 12 noon in the library.

Stonham Byan provide a free drop in surgery every Monday from 3pm until 5pm. They can advise on issues including housing, claiming benefits and budgeting skills.

Hayle Library is open on Mondays, Wednesdays and Fridays 9.30am – 5pm and Saturdays 10am – 1pm.

If you're not a member already - remember it's free to join - you just need to bring proof of your address with you.

We hope to see you very soon.

BUSH MONKEY

GARDEN SERVICES

Keep it simple Keep it local !
Over 25 years experience with that personal touch.

Qualified and fully insured
Lawn care

Planting schemes

Weed & insect control

Tree hedge & shrub pruning

Garden maintenance & design

Decking Patios

Pressure washing Call Anthony for free no obligation quote or advice.

07825 881 078

bushmonkeygardenservices@yahoo.co.uk



The Hayle Hub, part of Transition Penwith, was launched in December at a showing of the inspirational documentary film 'In Transition 2.0' at Harry's Cali Style Restaurant on Penpol Terrace.

The documentary, all about the worldwide Transition movement and how 'people power' can bring solutions and optimism to today's uncertain times, got the group buzzing with practical ideas about what they want for the future of our area. Suggestions included pushing for incredible edible growing areas/

YOUR OLD TAPES ONTO CD



**YOUR OLD CASSETTE,
REEL TO REEL TAPES,
OR 33/45/78 RPM RECORDS
ALL SAFELY TRANSFERRED
ONTO CD.**

Your precious memories saved forever.
Your own photos, information and dedications
can be included on the CD/DVD cover.

**Also now : old VHS video tapes
and Photos all onto DVD.**

Digital Recording for Singers and Musicians
Songwriters, Poets, Story Tellers, etc.
Also Musical Backing Tracks provided etc.

Contact: Steve Nunn. Telephone 01209 719481
www.cornmillstudio.co.uk
Email: cornmillstudio@aol.com

co-operative allotments; more outlets for locally-produced food; more cycle paths; community renewable energy projects; and supporting the local economy through time bank and voucher exchange.

Transition Penwith has been running inspiring events in West Cornwall for around a decade. The local Hub is a way that people in Hayle and surrounding area can really get things going on the ground while being part of the now famous worldwide Transition movement.

Nigel Pooley, one of the founders of Hayle Hub, said "We've been really pleased with the energy and enthusiasm generated in getting the Hayle Hub up and running over the past two months. To keep things

going forward though, we must generate interest in the town; 'people power' at grass roots level is what the Transition movement is all about. Part of Transition's ethos is about inspiring really well-connected communities, so that people know their neighbours, and value the sustainable, 'local' ethos which can easily be lost in today's busy communities. We'd also love to hear from independent local businesses in and around Hayle who may have ideas we could work together on in promoting sustainability, ethical trading and strengthening the local economy".

At the time of writing, finishing touches are being put to plans for Hayle Hub's first social gathering, the 'New Year Swap Shop and Re-sparkle' awareness-raising (31 January) afternoon. The theme for this is creativity through recycling, and the group hopes to attract like-minded locals to re-think that old 'stuff' we all have hanging around our homes. The Hub wants to get eco-awareness onto everyone's new year's resolution list, whilst opening opportunities for locals to meet friendly like-minded folk over homemade cake and a cuppa. Creative workshops on offer will inspire children and adults alike to re-use and up-cycle, and stimulating films and resources will help people appreciate what the Transition movement is all about.

The Hayle Hub invites readers of the Hayle Pump to get in touch with ideas of what you'd like to see for the future of your area, and better

still come and join the group (free of charge). To find out more about Transition Penwith and to register your interest, visit

www.transitionpenwith.org.uk/hubs/hayle

look out for posters around town about Hayle Hub's next social event later in February. For more info contact

Kate Barter – 07838 228749 or
Nigel Pooley – 07702 619679

The Pump would like to wish Jane of Daisy Potter a happy retirement coming up. At seventy four and more than fifty years working she feels she has earned a break from the business world .

Barrie's Bits

Actual call centre conversation!!!

RAC Motoring Services

Caller: 'Does your European Breakdown Policy cover me when I am travelling in Australia ?'

Operator: 'Doesn't the product name give you a clue?'



David N'jie
PAINTER & DECORATOR



07944 156995



01209 831397

dn-jiepainter-decorator@hotmail.com
Trehannas Cottage, Praze-an-Beeble
Camborne TR14 0LH



Daisy Potter Vintage Clothes



Come and visit us and go back in time or stay in the present and go

for new designer wear.

Contact Jane
on 01736

754836

**Upstairs in the
Gallery,
The Old Foundry
Chapel,**

**Vintage
&
New
Design
Clothes**





Piano Lessons in Hayle

Peter Luing GRSM, LRAM, ALCM, PGCE, DPSE, ex-head of music at Hayle Community School, now has vacancies for piano lessons on a newly restored Bechstein 7 foot grand or a Zimmerman upright in his detached studio at **21 Gwel Trencrom, TR27 6PJ**. A graduate of the Royal Academy of Music, he can also offer theory and composition lessons and singing coaching. The studio is also available for hire for practising.

A separate comfortable conservatory is available for parents if they do not wish to sit in on the lessons..

For further details visit

www.peterluing.co.uk

Please ring **754225** for times of current vacancies.



Here is one of Barrie's longer bits;

There's always one. This has got to be one of the funniest things in a long time. I think this guy should have been promoted, not fired. This is a true story from the Word Perfect Helpline, which was transcribed from a recording monitoring the customer care department. Needless to say the Help Desk employee was fired; however, he/she is currently suing the Word Perfect organization for 'Termination without Cause'.

Actual dialogue of a former Word Perfect Customer Support employee. (Now I know why they record these conversations!)

Operator: 'Ridge Hall, computer assistance; may I help you?'

Caller: 'Yes, well, I'm having trouble with WordPerfect.'

Operator: 'What sort of trouble?'

Caller: 'Well, I was just typing along, and all of a sudden the words went away'

Operator: 'Went away?'

Caller: 'They disappeared.'

Operator: 'Hmm So what does your screen look like now?'

Caller: 'Nothing.'

Operator: 'Nothing??'

Caller: 'It's blank; it won't accept anything when I type.'

Operator: 'Are you still in WordPerfect, or did you get out??'

Caller: 'How do I tell?'

Operator 'Can you see the C: prompt on the screen?'

Caller: 'What's a sea-prompt?'

Operator: 'Never mind, can you move your cursor around the screen?'

Caller: 'There isn't any cursor: I told you, it won't accept anything I type.'

Operator: 'Does your monitor have a power indicator?'

Caller: 'What's a monitor?'

TREGLISSON

GARDEN MACHINERY

**for servicing repairs & sales
of all makes including
builder's light machinery.**

Unit 1, Treglisson Rural

Workshops,

Wheal Alfred Rd,

Hayle

TR27 5JT

Contact Ray Froggett

on 01736 759752

07799 834961



Operator: 'It's the thing with the screen on it that looks like a TV. Does it have a little light that tells you when it's on?'

Caller: 'I don't know.'

Operator: 'Well, then look on the back of the monitor and find where the power cord goes into it. Can you see that?'

Caller: 'Yes, I think so.'

Operator: 'Great. Follow the cord to the plug, and tell me if it's plugged into the wall.'

Caller: 'Yes, it is.'

Operator: 'When you were behind the monitor, did you notice that there were two cables plugged into the back of it, not just one?'

Caller: 'No.'

Operator: 'Well, there are. I need you to look back there again and find the other cable...'

Caller: 'Okay, here it is.'

Operator: 'Follow it for me, and tell me if it's plugged securely into the back of your computer.'

Caller: 'I can't reach.'

Operator: 'Uh huh. Well, can you see if it is?'

Caller: 'No.'

Operator: 'Even if you maybe put your knee on something and lean way over?'

Caller: 'Oh, it's not because I don't have the right angle - it's because it's dark.'

Operator: 'Dark?'

Caller: 'Yes - the office light is off, and the only light I have is coming in from the window.'

Operator: 'Well, turn on the office light then.'

Caller: 'I can't.'

Operator: 'No? Why not?'

Caller: 'Because there's a power failure.'

Operator: 'A power..... .. A power failure?'

Aha, Okay, we've got it licked now.

Do you still have the boxes and manuals and packing stuff your computer came in?'

Caller: 'Well, yes, I keep them in the closet.'

BIZ AND BYTES

07974 647524 01736 755971

If you require computer assistance, either training or to resolve a problem then give us a call. Visits arranged to suit you.

Looking after the home user and small business.

WEBSITES • BROADBAND • TRAINING •
COMPUTER SUPPLY • TYPING



www.bizandbytes.co.uk
enquiries@bizandbytes.co.uk



Operator: 'Good. Go get them, and unplug your system and pack it up just like it was when you got it. Then take it back to the store you bought it from.'

Caller: 'Really? Is it that bad?'

Operator: 'Yes, I'm afraid it is.'

Caller: 'Well, all right then, I suppose. What do I tell them?'

Operator: 'Tell them you're too f---ing stupid to own a computer!!!! !'

Barrie

Hayle Christmas Lights

Well done to Nick Farrar and his team for putting up such a splendid show for us. It really does raise the spirits at an otherwise very dark time.

Of course if you are in any way able to help please get in touch with Nick

Hidden Words Quiz 125

By Cleverclogs

This time, we are looking for words to follow 'Heavy'. e.g. Please take one—(heavy-set)

1. Rather than deduct it from your wages, you can work it off in overtime.
2. I saw a terrifying sight last night. Grandma without her wig and teeth!
3. There were, I know, eighty tickets sold for tonight's performance.
4. These ancients were so intelligent—what Euclid deduced is amazing.
5. That Carn Brea thing was a complete fiasco—don't you think?
6. These ornaments are covered in dust—try to clean them all up.
7. There's a book I want to read—it's called 'The Art Edition'.
8. That's some tale you're telling me—am I supposed to believe that?
9. You may have to make a choice from obviously different locations.
10. That old railway engine clattered along with smoke rising and streaming behind.
11. I'm glad it all ended peacefully - 'all's well that ends well'.
12. Once, I remember, she went to Bingo in Glasgow and won £1,000!
13. That's the part I cleaned earlier, it doesn't need doing again.
14. At the West Briton, she's called 'The Art Editor', she deals with the classified section.

15. Some people I know eat herbs every day with their meals.
To win a prize voucher worth £20 to be spent with any of our advertisers, send your answers by 13 March, along with your contact details to

editor@haylepump.org.uk or use any of our drop-off points on p.2.

Answers to Quiz no 124

- 1.piquet 2.skat 3.nap
4.newmarket 5. brag 6. pontoon
7.go fish (we allowed fish)
8.sevens 9.whist 10.snap
11.rummy 12.canasta 13.poker
14.bridge

The winner, picked at random from all the correct answers was:

Mrs Beryl Stevens of Connor Downs.



abode
Property Agents

We deliver a fresh, passionate and personal approach to selling your property.

Why not contact us for a free market appraisal?

01736 756681
abodepropertyagents.co.uk

Club Listings

Hayle in Bloom. Last Monday of the month, except for Aug & Dec. Held at Passmore Edwards Institute 7pm.
www.hayleinbloom.org.uk

Hayle Community Archive.

Open Tuesday & Thursday 10 a.m. – 1p.m.:Tel 01736 753962, email:
haylearchive@haylearchive.org.uk

Facebook: Hayle Community Archive.
Twitter:@hayle archive

Hayle & District Bowling Club.

10am every Sunday. Short Mat bowling indoors during winter 01736 753565

Hayle Breezers Group For people with long term breathing problems.

Thursday 1.30pm Passmore Edwards
Ian Harrison 0776 783 8620

Hayle Film Club. Films shown on the 2nd Saturday of every month at 7.30 p.m. at The Passmore Edwards Institute. Donna 01736 753184. Check on www.haylefilmclub.org.uk

Hayle Flower Club. 4th Wednesday of the month 7.30pm, Hayle Daycare Centre in the conservatory
Tel: 01736 756729

Hayle Friends Group for Children's Hospice SW "Little Harbour"

The supporters meet informally once a month under chairmanship of Jull Sharpless 01736 756896
jillsharpless123@btinternet.com

Hayle Harbour Users Association.

First Monday of each month, 7.30pm, Royal Standard Pub.
R.Lello 01736 757632 .

Hayle Judo Kwai meeting Unit 7 Rospeath Industrial Estate, Crowlas. Tuesday & Thursday.

Sensei Richard 01736 740723
or Karen Deacon 0779 209 9979

Hayle Library Reading Group. 2.pm first Wednesday of each month .

Hayle & District Lions Club. 2nd and 4th Tuesday of every month, 7.30pm at

Passmore Edwards Institute.
Tel. Mel George 01736 756484

Hayle Lawn Tennis All ages and abilities welcome. Tremeadow Terrace, Hayle 01736 850843

www.haylelawntennisclub.co.uk

Hayle Local Vocalz - a 65 strong mixed voice adult choir. Mondays, 8pm, St Elwyn's Church, Hayle. 07950 585787

Hayle Model Boat Club. Wednesday evenings 7-9pm & Sunday mornings 10-12 noon, meeting at green chalet by Hayle outdoor swimming pool. Tel: 01736 755516, or Les on 01736 754254

Hayle Model Railway Club & Duchy Railroaders Club Rooms Unit 5, Praze Business Park, Praze-an-Beeble. Mon. & Thurs. 7pm – 9.30pm. Bob Mims 01736 757910 bobmims@live.co.uk

Hayle Meanderers Every Wed.10.30am Commercial Road car park. Free, + contribution to carshare. Tel Eddie Downing 01736 364673

Hayle Old Cornwall Society. First Friday of each month. Oct. to May. Passmore Edwards Institute,7.30pm. Maria Prosser, 01736-755072

Hayle Pilot Gig Rowing Club. Rowing out of Hayle Harbour most Tuesdays and Thursday evenings
chair@haylegigclub.co.uk

Hayle Penwith U3A Hayle Day Care Centre Social meetings 2nd & 3rd Thurs. 2pm. Art, History, Writing, Play reading, Current Affairs, Luncheon Club.

Chairman Mike Stuckey 01736 753755
Sec. Heather Stewart 01736 710045

Hayle RNLI meets Mar to Nov at 7.30pm 2nd Wed. of the month at Unit 5 Hayle Ind. Park. Tel 01736 353567

Hayle Rotary Club Mon. 7pm except Bank holidays at White Hart Hotel. David Raymer 01736 755029
Trevor Osborne 01736 793596

Hayle Surf Life Saving Club Riviere Towans Hayle TR27 5AF Captain: Dave Parker 01736 755303

Heyl St Piran Singers Every Thursday at Hayle Methodist Church Hall 7.30 to 9.30pm Ann Thomson 01736 752335

Hayle Twinning Association 2nd Monday of each month at Hayle Community Centre 7.15pm in Room 7. Sonia Glasson 01736 754531

Heyl Town Band. Rehearsals Tuesdays & Thursdays 7:30pm – 9:30pm, Junior band rehearsals Thursdays 6:pm – 7:00pm

Phillack Church Hall.

Last Saturday of the month is Quiz Night at 7.30 p.m.

Praze Hayle Choir. Every Tues.7.30pm. Methodist Hall Don Metcalf 01736 757720

Royal British Legion. Passmore Edwards Institute. Every Mon. Wed. & Friday evening, and Saturday afternoon. Mr John Bawden Tel: 0774 327 6412

Save our Sand. 2nd Tuesday of each month, 7.30pm at the Passmore Edwards Institute Hayle

Shore Surf Ladies Only & Juniors

Surf Club All abilities welcome. Every Saturday 9 – 11am. 01736 755556 Beachline 07855 755556 info@shoresurf.com

St Erth Concert Band Rehearsals Tues 7.30 to 9.30pm in Methodist Church Hall G.Lawry 01736 755512

www.sterthconcertband.co.uk

St. Erth Friendship Club for the over 60s Tues 2–4pm £1.50 per session St Erth School Hall 01736 850758

St Ives and Hayle Community Choir Tuesdays 2pm to 3.30pm at St Anta Church Hall, Carbis Bay 07950 585787

Strumalongers Guitar Group Wednesday 7 p.m. to 9.30 p.m. at Passmore Edwards institute

Table Tennis for Fun, every Friday at 2pm at Hayle Methodist Church Hall, Chapel Hill, Hayle. Only £2 per session. Bats, balls and squash provided. John

Nunn 01736 759686

W.I. Hayle 1st Tuesday of the month, 7.00 pm Hayle Daycare Centre Margaret Stockton 01736 756007

To appear on this page free of charge drop in details to :

**Passmore Edwards Institute
Angove Sports,
The Farm Shop or email
editor@haylepump.org.uk**

P G FRANKLIN

Chapel Hill, St Erth
Carpenter & General House
Repairs Garden Landscaping
NO JOB TOO SMALL
Tel 01736 757360
Mob 07778 739 341



SHUT UP DAD I'M
TRYING TO GO TO
SLEEP.

ADVERTISERS INDEX

2..1st Choice Paving
40..Abode
6. All Aerials
3. A. McDonald
18..**Angove Sports**
21..**Big Pink Tree**
39..Biz and Bytes
7...Blue Bay Café
33..Bouncy Castle Hire
35...Bush Monkey
20...**Cafe Riviere**
17..C.A.M. Properties
11. Castaways
34. Chimney Sweep
16 Clare Mungles
15 Cliffords Plumbing
36..Cornmill Studio
10..Cornwall Chiro Clinic
27..Cornwall Councillors
5... Country Skittles
37..Daisy Potter
17..Dapper Dogs
8. Dave Dobson

37..David N'jie
20..Des Button
19. Emma Helping Hands
22..**Farm Shop**
30 Flowertime
11..Gallery Café
26. Guitar Lessons
8....Harvey Rail Holiday
22..Hayle Carpentry
5...Hayle Cycles
34. Hayle Day Care
7. H.D.Framing
15...Heidi Bows
24..J C Electrical
6....John Andrews
12...Lindsay's Dogs
29 Mad Hatter
25...Mobile Foot Clinic
4....Nick Farrar
42...P G Franklin
31...Paradise Park
14...Passmore Edwards
32...Paul Sherris
38...Peter Luig
9.....Philps Pasties

27 Proud Paws
23...Rick Harvey
33...Rosewarne
32...Sewing Machine
14...Seymour and Jago
13...St Erth Cars
30 Sylvia's Exercise
26.. Tee Cee Tech
10...T Hosking
28...T J Carpets
29...T P Wills
38..Tregliss Garden
9....Ula
19...Webb & Philp
43...Winns Funeral
25. Zip Inn
3..Yoga

**Pick up points in bold.
Also at Library, Surgery,
P.O.s. Warrens at Foundry,
McColls, Launderette, Old
Foundry Chapel, Spar, Co-
op, Angove, Hospice Shop.
Jolly Bodger etc.**

W J WINN FUNERAL DIRECTORS

We are here to help you 24 hours a day

- Funeral Pre-Payment Plans
- Memorials
- Private Chapels of Rest

WJ WINN

Trenwith Terrace
St Ives TR26 1QE

Tel: 01736 793029

WJ WINN

69 Fore Street
Hayle TR27 4DX

Tel: 01736 752124

CHARLES BRYANT

North Road, Goldsithney,
Cornwall TR20 9JY

Tel: 01736 710318

MARAZION FUNERAL SERVICE

Back Lane, Marazion, Cornwall TR17 0HE

Tel: 01736 710318



Part of Dignity plc. A British Company.



Hayle

Library



These are some of the services you can access here at the One Stop Shop

If your recycling containers are falling apart/gone missing we can order free new ones to be delivered to your home

We sell good quality large Dog Poo bags

You can take council tax payments

We have a wildlife garden with picnic table and bird hide that customer are welcome to and use

Reporting lost/found dogs

For customers requiring PDSA support, we can officially verify proof of council tax benefit

We can issue Rover parking tickets

Every week we have an updated copy of the homechoice list.

Open Monday, Wednesday, and Friday, from 9.30am to 5pm and Saturday 10am to 1pm.

USE IT OR LOSE IT

See page 34 for further information