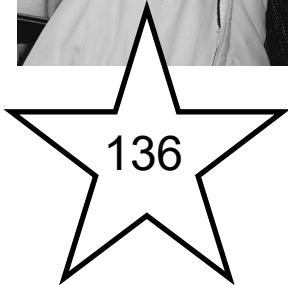


*Merry
Christmas*

**HAYLE
PUMP
NEWSLETTER**

December 2017—January 2018



136

*National Coastwatch Institution
St Ives. Eyes along the Coast
throughout the year.*

*Free - thanks to our volunteers and advertisers.
Circulation 2500*

Hayle Pump Newsletter

Passmore Edwards Institute, 13-15 Hayle Terrace TR27 4BU

The Pump is produced by volunteers as a community newsletter.

NB All articles accepted are not necessarily the view of the editorial team.

View online at www.haylepump.org.uk



Editorial team contact

editor@haylepump.org.uk

Advertising Jeff Turk

ads@haylepump.org.uk

Phone 01736 752319

Web site John Bennett

webmaster@haylepump.org.uk

Team members

Samuel Marsden

Sarah Turk

Stephen Murley

Send your adverts to

ads@haylepump.org.uk or use

drop off points

Advertising Rates

1/8	63 x 47.5	£10
1/4	63 x 95	£15
1/2	Not available	

Subscriptions

For 6 issues by post, please send a cheque or postal order for £3.60 made out to Hayle Pump Newsletter to:

Hayle Pump Subscriptions

35 Penpol Terrace,

Hayle TR27 4BQ

Please give your name and number as well as the delivery name and address.

Send any articles or copy to

editor@haylepump.org.uk

or drop off at

Angove Sports (Copperhouse)

The Farm Shop (Foundry)

Passmore Edwards Institute

(opposite War Memorial)

NEXT DEADLINE is

13th January 2018

1ST CHOICE PAVING

Drives, Paths, Patios, Landscaping.



01736 753087 07969 960128

www.1stchoicepaving.com

Clifton Terrace, Hayle.

Mayor's Christmas Message

Once again I thank the Hayle Pump for allowing me this opportunity to write to you on behalf of Hayle Town Council, wishing all of you a very Merry Christmas and Happy New Year.

This year has been interesting to say the least, with local elections bringing a new look to the Council, the retirement of some long standing councillors and the election of six new members to our team.

We are continuing to provide services that may otherwise be lost through cutbacks and austerity, just recently the Council has voted unanimously to take over the running of our Library to protect this much relied upon asset from closure.

Our Council workforce has been increased to ensure we keep on top of any matters that arise for any reason, and also they complement our excellent Clerk and her team very well.

The Mayor's walk for St Julias Hospice raised over £6000 for this wonderful facility, I thank everyone that took part in the first damp walk for a few years.

There are many fabulous organisations and volunteers in Hayle that all work very hard to make our Town what it is, I thank all of you for your efforts. One team though must have a special mention. This year I was privileged to attend the South West in Bloom Awards in Torquay, where Hayle in Bloom picked up the Preece Cup for best in category, well done to all of you.

Send Flowers
This Christmas
01736 757006
We can send flowers
Locally
Nationally
Internationally
FlowerTime @
The Big Pink Tree
www.wesendflowers.co.uk

This past month has seen the news that Barclays Bank is to close in Foundry Square, a sign of the times perhaps, and sends a signal out that we must use our local shops and services, if nothing else to demonstrate that there is a need for such facilities in Hayle, and that we don't want to lose them.

This is my last message as Mayor, I thank the Town for electing me to represent them, and I thank the Council for this fantastic honour, it has been amazing.

Hayle is the greatest Town with the most wonderful people I am so proud to have been your Mayor.

Merry Christmas Hayle and have a fantastic 2018.

Love to all of you,

Nick and Angie Farrar, Mayor and Mayoress of Hayle.

National Coastwatch Institution

St Ives NCI (National Coastwatch Institution) is looking for volunteers to cast their eyes over the sea from their station on The Island in St Ives. Since 1999 the NCI at St Ives has helped keep safe swimmers, kayakers, kite-surfers, paddle-boarders, walkers, and local fishing boats in this vulnerable stretch of the sea across St Ives Bay. In all types of weather, in all sorts of visibility and rough seas, volunteers are the eyes and ears across this exposed headland, with virtually uninterrupted views from the western approaches to St Ives, beyond Clodgy point, right across Carbis Bay, Hayle Estuary,

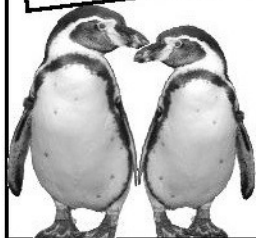
Gwithian, and as far north as Trevoze Head, near Padstow, some 26 miles away.

Over fifty fully-trained volunteer watchkeepers, from all walks of life, equipped with telescopes, weather instruments and up-to-date charts, operate the Station at St Ives during normal working hours, while an emergency team is on standby 24 hours every day. Volunteers keep a visual watch of the coast by monitoring weather, sea conditions, radio channels, radar and observing coastal marine life; additionally providing this information for mariners, fishermen, walkers and other users of the sea and coast. Although surveillance is usually routine work, volunteers are trained

WONDERFUL WILDLIFE AND INDOOR PLAY AT PARADISE PARK!

Open at 10am
Every day except
Christmas Day

Gift Certificates for
Day Tickets and
Season Tickets



- Home Cooked Roast Lunches
Tue, Thur & Sun
with 'Seniors Specials' on Tuesday
- Themed birthday party rooms
 - Park & Gift Shop open
10am - 3pm
 - JungleBarn open
10am - 6pm
(3pm - 6pm JB only tickets)
 - Return Tickets £3.50

COMING SOON...

Our
magical
Santa's
Grotto



Sat & Sun December
2nd & 3rd, 9th & 10th,
then 16th to 24th.
12 noon to 2pm.
£5.25 including gift.

Paradise Park, Trelassick Road, Hayle

Open every day at 10am · Infoline: 01736 751020 · www.paradisepark.org.uk

And pop
into the
pub...

Real ales

BIRD IN HAND
FAMILY PUB & BREWERY AT PARADISE PARK



Live Music
Snooker
Room

Great Food from chef Steven Jackson

to act in emergencies by coordinating with search and rescue services.

Recently, thanks to generous donations from local businesses, St Ives NCI gained an extra set of eyes to help monitor the coast, in the form of a new £8,000 webcam which provides sweeping overviews and zoomed-in detail at great distances, plus auto-tracking and built-in video analytics. Designed for outdoor conditions in a robust housing, this webcam helps enhance NCI St Ives services. However, there's no substitution for watchful eyes, which can spot things that no webcam, radar or other automated system can, such as flares or people waving for attention. The cost of running the St Ives NCI station is met solely by donations. Volunteers are vitally important therefore to help keep our coasts safe and the station open and running effectively.

Do you have time to spare between 7am and dusk? Are you a dedicated person with a sense of responsibility to seafarers, coast-users and the NCI? If so, St Ives NCI would welcome you to their team of volunteers, with full training provided to ensure you reach the high standard expected by the NCI and the Maritime Coastguard Agency (MCA).

To find out more information on volunteering at St Ives NCI, please visit their website at <http://www.nci-stives.org/> or contact Helen Simpson, Station Manager, on 01736 740129.

Julia Woodhams

MAR: MIGHT: MBRCP

COMPLEMENTARY THERAPY PRACTITIONER

Aromatherapy, Reflexology,
Reiki Healing, Indian Head
Massage, Holistic Massage
and Aromatherapy
Facials with exotic
oils.



For appointment or
enquiries

**Ph: 07960 181497
01736 603397**

Email: roo61@hotmail.co.uk

Gift Vouchers available.

Aggie Panthus Gardening



**An enthusiastic Lady gardener
who can:**

Mow, hoe, sow & grow

Weed doing a fine deed

**Waste clearance leaving a tidy
appearance**

Repair taking good care

NO JOB TOO SMALL

Contact Tina: 07596 846931

to discuss further

Email:

 **aggiepanthus@hotmail.com**

CRB/DBS checked

**Character references if
required**

ALEXANDER McDONALD

Gutter clearing and fascia board cleaning. Painting, pressure washing, gardening services and all those little jobs you keep putting off.

Free estimates.

Big enough to cope, but small enough to care!

Mob 07880 777 591

Home 01736 753102 ,mail

alexmc808@talktalk.net

**Merry
Christmas**



The Mad Hatter

Bed & Breakfast

Open all year round
including Christmas & New Year

Rooms overlooking
Copperhouse Pool.

Full English Breakfast.

Competitive Rates.

*We would like to wish all our
Customers a very Merry
Christmas and a healthy and
prosperous New Year! '*

. 73 Fore St , Hayle , TR27 4DX
01736 754241 0787 1165381

www.comwall-online.co.uk/madhatter

Dogs Welcome

Hayle CYCLES

MOUNTAIN - ROAD - BMX SPECIALIST

Bicycle Sales and Repairs

Tel: 01736 753825

36 Penpol Terrace, Hayle TR27 4BQ
www.haylecycles.com

Council Corner

December 2017

**and January
2018**



Hayle Neighbourhood Plan

In accordance with Regulation 16, the six week public consultation of the Hayle Neighbourhood Plan will commence on 23 November 2017. Hard copies of all of the documents will be available for inspection at the Hayle Town Council Office in Hayle Community Centre and at Hayle Library. It may also be viewed on **www.hayle.np.net**. This is the penultimate stage of the process before the independent examiner's review. Assuming that the plan is found to be satisfactory and requiring little change the referendum will take place early in 2018.

Mayor's Sponsored Walk

In the last edition of Council Corner, we reported that we had hoped to raise over £5,000 for Cornwall Hospice Care. The good news is that the Walk actually raised over £6,000

with hopefully a little more to come in. Once again thank you to everyone involved.

Council Vacancy

There is still a councillor vacancy for North Ward. More information is on the council's website. If you would like to take an active role in shaping the future of Hayle please contact the Clerk, details below, to have an informal chat to find out what is involved.

Inclusive Roundabout at Recreation Ground

The new inclusive play roundabout at the Recreation Ground has very recently been installed and we hope that you are already enjoying it. The town council applied to Tesco's Bags of Money fund and was lucky enough

to win £10,000 as a result of the public vote. We are extremely grateful to Tesco, Groundwork Trust and everybody that took the time to support the project. The second phase which includes the installation of fully accessible picnic benches will take place in the spring of 2018.

Budget and Precept

It is that time of year when the Council sets the budgets and precept for the financial year 2018-2019. There is now so much to consider, due to the ever increasing number of services that the Town Council provides, that several meetings are required to debate the financial implications for the services and facilities for the forthcoming year.



 Cornwall
Chiropractic
Clinic

Our practitioners are all highly qualified, covering chiropractic, chiropody/podiatry, sports massage, acupuncture, rehabilitation, aromatherapy massage, reflexology and yoga.

Foundry Square, Hayle, Cornwall | Call today...
www.cornwallclinic.co.uk | 01736 759088





We are a Pre-loved Boutique selling an extensive range of quality label clothing, shoes and accessories. Buying and selling on commission is easy and we are on hand to book in your clothes, bags and accessories. Make money on your once cherished garments, it's so easy.

**Something Old
Something New**

stock hand-made Tiaras and Fascinators, and also sell New Wedding Dresses in all sizes ranging in price from £99 as well as beautiful mother of the bride dresses.

*1 Chapel Terrace Hayle TR27 4AB
(by the viaduct)*

07765 229 764



Citizens Advice Bureau

It is with regret that we have to announce that the Citizens Advice Bureau will no longer hold surgeries at the Community Centre – this is due to the lack of qualified and available volunteer advisors.

Christmas Opening

The town council office will close on Friday 22 December and reopen on Tuesday 2 January 2018. Emails will be checked. Any issues relating to the public conveniences or open spaces should be reported to CORMAC via 0300 1234 100.

Small Grants Available

Hayle Town Council annually awards capital grants to local clubs and organisations. If your group is in need of new equipment/kit or requires funds to secure other sources of funding for larger projects, please contact the Town Clerk's office for an application form. The Council's Resource Committee considers grants quarterly; the next meeting is scheduled for 25 January 2018. For consideration at that meeting please submit your completed application form by 18 January 2018.

Hayle Town Council

Hayle Community Centre
58 Queensway, Hayle, TR27 4NX
01736 755005
townclerk@hayletowncouncil.net
www.hayletowncouncil.net
Office hours 9.30am – 12.30pm

Bunny, Sheryl & Laura Wish all their customers a Merry Christmas & Happy New Year

The Gallery Coffee Bar

Warm and welcoming with comfy indoor & outdoor seating.

Relax on our sofas with great coffee & tea, teapigs, or hot chocolate.



Try some of our delicious home-made cakes.

We have a range of light lunches, jacket potatoes, soups and paninis. Also bacon/sausage rolls etc



Dogs are welcome
1 Chapel Terrace, Hayle.
(by viaduct)
07765 229 764



PASSMORE EDWARDS INSTITUTE NEWS

It was time for a facelift, so the Institute is currently being painted throughout by local painter David N'jie. All the rooms, the hallways, the kitchens and the toilets are included. We apologise to users for the temporary inconvenience, which we are trying to keep to a minimum. We think you will find the results worthwhile. We are also replacing the blinds in the Trevithick Room and repairing them in the other rooms. Improved lighting is also in our plans.

The upstairs areas of the building are not accessible to disabled people and we are working on installing a lift. We have planning and listed building consent and we are making applications for grants to help with the approximate cost of £30,000.

We are always keen to welcome new faces to our committee so if you would like to join us, please contact me to discuss what is involved - mostly a desire to keep this wonderful building going for future generations.



David N'jie
PAINTER & DECORATOR

 07944 156995  01209 831397

dave.painter@hotmail.co.uk
Trethannas Cottage, Praze-an-Beeble
Camborne TR14 0LH



Duckies Cafe

@THE OLD FOUNDRY CHAPEL
HAYLE

Serving homemade & freshly prepared breakfasts, lunches, cakes & coffee.

Monday to Saturday 10am—4pm



Come to our "supper club"
Every Thursday in December
(along with late night shopping at the Old Foundry Chapel)
5pm—7.30pm

CHECK US OUT ON FACEBOOK
FOR UPCOMING EVENTS & DAILY SPECIALS

John Bennett, Hon. Treasurer,
Passmore Edwards Institute.
07876152915
treasurer@hayle-pei.org.uk,
www.hayle-pei.org.uk

PASSMORE EDWARDS
INSTITUTE



MEETING ROOMS FOR HIRE

Hayle's Village Hall
has rooms for 2 to 60+

Children's Parties
and Catering

For more information:
WWW.HAYLE-PEI.ORG.UK
bookings@hayle-pei.org.uk
Or call: 07895-601978

13-15 Hayle Terrace, Hayle, TR27 4BU
Charity Number 268429
*Support the Institute in your Will
and through tax-deductible donations*

Millpond Update

Autumn is now officially here. The clocks have gone back and there is a genuine look of autumn colour around the ponds. The weather still



has not made up its mind whether to be stormy or calm. Hurricane Ophelia and Storm Brian did nothing to steady the nerves, but we survived virtually intact, for now! It seems that the Millponds might at long last be about to have some very necessary work done to tackle our

problems with the overgrowth of the reed beds on the Inner Pond and the sedges along the Rope Walk thanks to the Green Infrastructure for Growth Project from Exeter University. We appear to be one of their key sites and we are very much looking forward to seeing the work starting and its ultimate results. The Project will be fully funded and have its own working group which also will provide future maintenance once the work is completed.

Our drakes have now finished their moult and all our ducks have settled in for the winter. Our remaining Cayuga drake has joined with the rest of the flock, we have not found out what happened to his brother, but we still miss him.

Most of the black-headed gulls have arrived from Wales, but there seems to be less of them than in previous

St Erth & Hayle Cars



4 - 8 - 16 Seat Vehicles.

8 Seat Party Buses.

Polite, Friendly Staff.

**We are taking bookings
for Xmas Eve, Xmas Day,
Boxing Day & N.Y.E!**

01736 754000 or 01736 754040

*Merry Christmas & Happy New Year
From St Erth & Hayle Cars*

years even around the Estuary pools. This could be due to a poor breeding season and that numbers will recover again in future seasons. Flocks of smaller birds are coming in now from Europe where forest fires have prompted bird migration north. Pied wagtails, finches, robins, starlings and the small falcons are also taking advantage of quieter periods of weather to cross the channel.

A post on Facebook stated that our play equipment was being replaced in October, but did not actually state which October it was meant to be and our toddlers are still waiting for the County Council to get their act together!

“Nadelik Lowen ha bledhen Noweth Da”

A Very Merry Christmas and a Happy New Year to you all.

Georgina Schofield
Volunteer Wildlife Warden

Q. What is an underground train full of professors called?

A. A tube of smarties.



MERRY CHRISTMAS

BLEWETTS
TOY SHOP

19 Penpol Terrace, Hayle
TR27 4BQ
01736 753012

Dreckley's Waste Collection House Clearance & Deliveries

No job too small
Garages, Houses, Sheds, &
Gardens cleared.
Fully registered & insured.
Honest reliable friendly
service.

Call Suzanne on 07877 325404
Email: dellamuro@btinternet.com



Transformations Cornwall

*Give your home a luxurious finish
Create the style you desire
Bespoke curtains, blinds and soft
furnishings.
Handmade to a high standard
Professional, friendly service*

Elizabeth Gregg
17 Penpol Road Hayle
TR27 4AD

01736 752434

elizabeth@transformationscornwall.co.uk

[www.facebook.com/
TransformationsCornwall](http://www.facebook.com/TransformationsCornwall)

Natural & Organic Therapies
~ Clare Mungles ~



****News****

All being well I will be taking some time off next year to have a baby! I will be returning to work after the Summer. May I take this opportunity to thank all my lovely clients for their continued support over the years. I'll miss you...but I'll be back! So no Gift Vouchers this year I'm afraid, unless the recipient can wait until I return.



*Wishing you all a Happy
Christmas & New Year xx*

Massage

Hot Stone/Warm Bamboo Massage

Indian Head Massage

Organic Beauty Facials

Body Brush / Scrubs

Reflexology

Foot Pamper Treatments

claremassage@yahoo.com

www.naturalorganictherapies.co.uk



077897 60387

Unit 9, Foundry Farm, Foundry Lane,
Hayle TR27 4HD

Hayle in Bloom Success



Following two days of judging in July, Hayle were rewarded in the South West in Bloom competition awards day in October. This year 'Bloom' members were accompanied to the ceremony in Torquay by Hayle mayor, Nick Farrar, who witnessed an impressive haul of prizes.

Hayle achieved Gold award standard for the overall appearance of the town and outstanding status within the 'In Your Neighbourhood' class. This class included King George V Memorial Walk, Isis Gardens, Hayle War Memorial, Library Wildlife Garden, Bodriggy Academy and Paradise Park.

Following these achievements, Hayle was then awarded the prestigious Preece Cup. This is presented to the 'best in group' of towns with similar populations and which have already achieved Gold standard. Judges felt that the community spirit they experienced whilst visiting Hayle was the significant factor when compared with other towns such as Glastonbury and Sherborne. All presentations were made by Lord and Lady Julian Fellows.

Congratulations go to all 'Bloom' volunteers and Hayle council gardeners, who all work so hard

throughout the year and, of course, to all those Hayle residents who keep their gardens in such good order. A special thank you, also, to all our sponsors, old and new. Our aim, of course, is to keep the town looking good and to retain the cup in 2018.

Anyone wishing to join us as members of Hayle in Bloom please contact Nigel (01736 752169) or Neil (01736 438462) and/or come to the next meeting on Monday 29 January at 7.15pm. in Passmore Edwards Institute. You are very welcome.

Our next event is a Christmas Quiz on Thursday 7 December at 7.15 pm. at Passmore Edwards Institute. Teams of 4 or 6 @ £3 per person, to include mulled wine and a mince pie. (Tea and coffee available). To book your seats contact: Lyn (01736 752166). A Christmas-themed raffle will also take place.

Advance notice is also given of the Annual 'Bloom' Auction on 16 February 2018 to be held at the Cornish Arms.



HYDRO BATH **BLOW DRY**
BRUSHING **NAIL CARE**
EAR/EYE CARE **FLEA TREATMENT**
DEODORIZE **CLIPPING.**
ALL NATURAL PRODUCTS.
PH 07903 042950
Lesley 01736 850971
E-mail lesleyandkeith@msn.com
City of Guilds Trained



PHILPS
 FAMOUS PASTIES OF CORNWALL

Order our Famous Cornish Pasties online to be delivered to your door at www.philpspasties.co.uk

Hayle East Quay 01736 755661
 Hayle Foundry Hill 01736 753302
 Marazion 01736 710332
 Praze-an-Beeble 01209 831360



FOOT CARE..
 in the comfort of your own home

For nail trimming, corn and callus removal etc

call Jennv
01736 751743
 DipCFHP,MPSPract

WE wish YOU A Merry CHRISTMAS





**ROLL BACK THE YEARS!
COME TO
SHADES OF GREY.**



**Movement to
Music for Older
People**



**ENJOY FRIENDSHIP FUN &
FITNESS WITH A QUALIFIED
INSTRUCTOR.**

Hayle Passmore Edwards	Mon 10-11am
St Ives library	Mon 2-3pm
British Legion Heamoor	Wed 10-11am
Leedstown Community Hall	Wed 2-3pm
Hayle Passmore Edwards	Thur 10-11am

£4.00 per session.

Info Sylvia on 01736 757560



children's hospice
SOUTH WEST

Each year Hayle Friends CHSW have sung Christmas carols and songs to raise funds for Little Harbour The Children's Hospice at St Austell.

This year we have two dates and venues and so I am recruiting people to pop along and join us for as long as they wish 10 minutes, half an hour, all day. We are grateful for all help.

The dates are: M&S 9th December and ASDA 23rd December.

HAYLE FILM CLUB
www.haylefilmclub.org.uk



**Fully Managed Property
Letting Service.**

We can advise on landlord's responsibilities such as: Energy Performance Certificates, Electrical Safety, Gas Safety Certificates, Landlords insurance. We will set market rental, find tenants, obtain references and much more.

Call Derek Penny or Chris on
01736 755077

**20 Fore Street, Copperhouse,
Hayle, Cornwall. TR27 4DY
email: camprops@btconnect.com**



*Photo caption, from left to right:
committee members Richard Frith-
Macdonald, Candida Frith-Macdonald,
Cathy Bryon-Edmond, Donna Anton,
John Bennett, Jeff Turk, Val Reardon.
(Not pictured: Laura McCrossen, Carol
Clark.)*

On Thursday evening 26 October, the Hayle Film Club celebrated its fifth anniversary, serving birthday cake, nibbles, prosecco and fizz to almost 40 members and general attendees just before presenting the Japanese family drama *After the Storm*.

Since beginning with two test screenings in 2012, and then with the help of modest seed funding from Hayle Town Council, we have screened 91 films at the Passmore Edwards Institute. We are now self-sufficient, thanks also to assistance several years ago from the British Film Institute's Neighbourhood Cinema Equipment Fund. With a fresh tagline '*Your neighbourhood cinema: fine films & friendly faces*,' the Hayle Film Club currently presents films twice monthly to both members and walk-up attendees, a mixed programme of well-reviewed independent, foreign-language and little-seen titles -- catering to many different tastes!

We have just planned our 2018 winter-spring film programme. Although subject to confirmation from the distributors, here's what we hope to screen at the beginning of the new year:

Saturday 13 January -

THE BIG SICK, a romantic comedy about a Pakistani-American stand-up comedian whose girlfriend, kept secret from his traditional Muslim parents, falls seriously ill.

Thursday, 25 January -

LOVING VINCENT, by special request from a number of our members, a fascinating biographical

**Personal Training
with
Martin Sinclair
of
MPS Fitness.**

**One 2 One
or
Small group sessions.
Either Gym based
or
outdoors - tailored to
the individual.**

**Contact Martin on
07891 186 876**



MPS-Fitness

PLANTECH

**THE FRIENDLY RELIABLE
SERVICE**

Lawns cut and borders
weeded.

Hedges trimmed.

Gardens cleared.

Gravel, sand, topsoil delivered
and laid.

Free no obligation quotes.

01736 754401

0797 9546434



depiction of the life of Vincent van Gogh fully animated in oil paintings. **Saturday, 10 February - VICTORIA & ABDUL**, Stephen Frears's take on the Queen's unlikely friendship with a young Indian attendant, starring Judi Dench (but of course).

Thursday, 22 February - IN BETWEEN, a drama about three spirited Palestinian women who share a flat in Tel Aviv, trying to find a balance between modern and traditional cultures.

I'd like to take this opportunity to thank all the current volunteers on our committee, but most especially the three now retired volunteers who were with us from the beginning: refreshments queen Joy Scott-Mance, former treasurer John Jansen,

and Sarah Turk, who managed our box office for five years. We are also grateful to those members who help us out on the night with set-up and breakdown and refreshments.

For more information, contact Donna Anton, chair, Hayle Film Club. 01736 753184

donna@donna-anton.com
www.haylefilmclub.org.uk

HAYLE CLEAN-UP DAY

A BIG THANK-YOU to the very large number who took part in the Clean-up Day on 17th September. Again we were blessed with good weather. We hope that the message is beginning to get through about keeping our town clean and



Webb & Philp Ltd
electrical contractors



Merry Christmas

All aspects of Electrical work undertaken

**Free Estimates. No Job Too Small.
Prompt. Reliable. Fully Qualified. Est 1972**

- ✓ Re-Wires
- ✓ Security
- ✓ Showers
- ✓ New Build
- ✓ Testing
- ✓ Maintenance
- ✓ PAT Testing
- ✓ Extra Sockets & Lights

www.webbandphilp.co.uk

Tel/fax 01736 753651 Mobile: 07419 376882

Email: electricians@webbandphilpltd.co.uk



presentable especially among the younger members of the community and those who purchase takeaways. We are thinking of doing another one in May 2018. Will you help?

Hello from Hayle Library

Lego Club at Hayle

Do your kids/grandchildren like Lego? Maybe you have some old Lego kicking about you want to donate?

We are holding Lego Club on the first Friday of every month at 3.45pm. There will be a story and then a Lego session making creations linked with the story. Please note that it is aimed at 3 upwards, however all children are welcome; under 4s need to be supervised by their carers

On the other Fridays we have a **Storytime** session from 3.45pm for an hour, aimed at children aged 3-9. Jane reads stories and does arts and crafts with the children.

Computer Buddy Wanted

If any of you are good with

ALL AERIALS

TV Aerial & Satellite TV Specialists.

digital 

Registered Digital
Installer



25 Years Experience

For all aspects of Tv Aerials,
Satellite Systems Fixed &
Motorised, Installations &
Repairs

Free Friendly Expert Advice By
Local Engineer.

Tel : 01736 759225

Mobile : 07979503907

Email. jonathan@allaerials.co.uk

THE FARM SHOP

31 Penpol Terrace, Hayle
TR27 4BQ

Open - 6 days a week
8am - 5pm

For all your local produce

Fruit, vegetables, plants, flowers,
free range eggs and
Cornish potatoes.

NOW IN

**Christmas wreaths
Homemade pickled onions
Christmas flowers**

We wish all our customers a
Merry Xmas and Happy New Year

DAVE THOMSON

**DECORATING
INTERIOR &
EXTERIOR.**

FREE QUOTATIONS

**TEL 07518 136 730
01736 754647**

**Dave.thomson2013
@hotmail.co.com**

Des Button

**SPRINGFIELD
33 Clifton Terrace
Hayle TR27 4BP**

**ELECTRICAL
SERVICES &
SUPPLIES**

01736 753211



**PART P
REGISTERED**



computers and can spare a morning or afternoon a week to volunteer, we are after a computer buddy who can help customers with computer issues. Just ask one of the team if this is something you'd like to do.

We have a good selection of books, DVDs and talking books for you to borrow. It's free to join, just bring a proof of address with you.

There are five public computers for our customers and visitors to use. For those that can't use a computer we run classes for absolute beginners, that run over a 4 week period for 2 hours at a time, so if you could benefit from these, please talk to one of the team.

We also have online resources available to our customers like Borrowbox and One Click digital where you can borrow e-books and e-audio books. Plus, an online language site called 'transparent language online'. Have a go, it's really easy to use.

At the back of the library is our lovely wildlife garden, full of all sorts of plants and insects. We have benches, a picnic table and a little bird hide for birdwatchers. It's a peaceful green space with great views across to King George V Memorial Walk.

We would really like to help any housebound people out there who love reading but can't access the library themselves. So, please, if you know anyone who is housebound we have a great team of volunteers who choose and deliver books to people once a month. It's free! Either ring 0300 1234 111 and ask to be put

through to us, or e-mail the team at hayle.library@cornwall.gov.uk.

For people with sight loss, there is information in the library. For example, British Wireless for the Blind and Isight Cornwall.

Stonham have a free drop-in session on Mondays from 3-5pm offering housing advice, preventing homelessness, claiming benefits, homechoice applications, maintaining efficient budgeting skills, contacting local councils, housing associations and more. Please come along and see if they can help.

For those of you that have any unwanted spectacles or hearing aids at home we have a collection bin for the Lions Club, they send them off to help improve the life of a person in the developing world.

We are open on Mondays, Wednesdays & Fridays from 9.30-5pm and Saturdays from 10-1pm.

Hope you all have a lovely Christmas and New Year.



Heyl St Pirans Singers

Heyl St Pirans Singers is a friendly welcoming ladies' choir, committed to providing enjoyment wherever and whenever they sing.

We have a varied repertoire of different music genres and are currently under new musical

Looking for Gifts & Cards for Christmas

Then go where I SHOP

The Big Pink Tree Penpol Terrace

Gifts for all

Jewellery, Soaps, Purses, Ladies Fashion, Candles, Greeting Cards, Locally Made Gifts & lots more...

01736 757527

find us & like on Facebook

Café Riviere

Across Hayle's Jubilee Bridge

Serving a variety of hot food, late breakfasts, drinks, ice-cream, cream teas and snacks.

- *Indoor and outdoor seating.*
- *Take-away is available.*
- *Open all year.*
- *Next to the public open-air swim pool, sub-tropical gardens, promenade and nature reserve.*



Independent, Confidential and Free

Do you have a health condition, disability, or are you a carer?

Our professional, friendly advisers are here to help you

- ✓ Money & Welfare Entitlements
- ✓ Rights & Discrimination
- ✓ Health & Wellbeing
- ✓ Housing & Home Environment
- ✓ Independent Living & Equipment
- ✓ Social & Leisure Opportunities
- ✓ Training, Volunteering & Employment

Open Monday-Friday, 10am-3pm

directorship learning lots of exciting new songs.

We are always keen to recruit more members and would love to hear from any lady or girl who would like to join us, particularly anyone from the alto voice groups. We meet on Wednesday evenings 7.30 - 9.30pm at the annexe of the Hayle Day Centre, Commercial Road in Hayle. You would not have to prepare an audition. Instead, a simple voice test will be required to ensure you are put with the right voice group. You would then be allocated to an experienced choir member who would mentor you through the first months until you feel confident with our singing.

Throughout the year we have concerts, with our next one being at **St Erth Church on 9 December at 7.00pm**, when we will be joined by St Erth Band.

Singing is a very good stress buster and has recognised health benefits. It is also a very sociable activity and a great way to meet new friends. We have a full social agenda too, and this year have had a skittles evening, a summer garden party and a bonfire party, as well as some spontaneous song nights.

If you are between 12 and 100 years old, can hold a tune and feel you would welcome a fun challenge, please come along to one of our practices or contact our chairman, Carol, on 01736 753496 or our Music Director, Martin, on **01872 272948** for more details. To hire us to come and sing for you, please also contact Carol or Martin.



Approved Training Centre

REMARKABLE TRAINING FOR REMARKABLE PEOPLE

Invest in your workforce now to enable them to deliver a remarkable service for you and to your customers

- Personalised training for your business
- FREE training for people with a health condition or disability and your Personal Assistants. We can provide funding to backfill your PA and pay travel expenses

Contact us now to discuss your needs



We have a great training venue at Guildford Road Industrial Estate. Hayle

Tel: 01736 751920

E: info@5degreeswest.org.uk

www.5degreeswest.org.uk

BIZ AND BYTES

07974 647524 01736 755971

If you require computer assistance, either training or to resolve a problem then give us a call. Visits arranged to suit you.

Looking after the home user and small business.

**WEBSITES • BROADBAND • TRAINING •
COMPUTER SUPPLY • TYPING**



www.bizandbytes.co.uk
enquiries@bizandbytes.co.uk



HOW MUCH DO YOU KNOW about our Easter celebrations beyond eggs and bunnies?

If you would really like to know what we commemorate and celebrate, come to a short series on Monday evenings at 7 Penmare Court running from:

**Monday, 8 January, to 12
February, 2018** - always at 7.00 p.m.
for exactly two hours. The series will
be led by Samuel Marsden.

Further information can be had from
him samuelmarsden@hotmail.com;
01736 756669).

There is a small charge of less than
£10 for the whole series.

**Q. What is an
underground train full
of professors called?**

**A. A tube of
smarties.**

Home & Garden Maintenance



Painting & Decorating
Carpentry, Glazing,
Stained Glass
Shelving, Doors
General Repairs
Alterations Etc.

Appliances Installed
Furniture Assembly
Flooring, Fencing
Gates, Decking
Hedge Trimming
Pruning Etc.



Seymour & Jago

33 Commercial Rd,
Hayle TR27 4DE

Local & Experienced
No Job Too Small

07813 324880 - 01736 756821

Shoreshine

Carpet & Upholstery Cleaning

*Cornwall's Premier Carpet &
Upholstery Cleaning Service.*

*Carpet cleaning, Fully trained &
insured, Stain treatment experts, Stain
guarding, Odour control,
Upholstery and Hard Floor cleaning.*

*We offer the very best in both
Dry & Wet Carpet /Upholstery
cleaning solutions*

ph 01736 755038 07890 798558

*info@shoreshine.co.uk
www.shoreshine.co.uk*

OAP Wednesdays 15% discount.

*For more offers please phone or check
website.*

What's on at Christmas in Hayle

Phillack Church Christmas Crib Festival



- 'Away in a
Manger'.

Saturday, 2 Dec.
10.00 - 5.00

Sunday, 3 Dec. 10.30 - 5.00

7.00 Christmas Concert by One
& All Choir

Monday, 4 Dec. 10.00 - 5.00

Loan of cribs would be welcome
- to be returned after the
Festival.



Phillack Church Christmas Lunch

Saturday, 9th December
Phillack Church Hall at
12.15. £10.00.

Book with Mary Marsden
(01736 756669).



Hayle's Heart to Heart Appeal



PLEASE HELP us raise money
to buy portable 24-hour heart
monitors for Bodriggy Health
Centre

Quiz Night & Supper

Friday 15th December 2017
at 7pm

At Hayle Day Centre

BOOK NOW!

Teams - 4 to 6 people Entrance
£2.00 plus a Christmas Raffle

*Also a special raffle of 2
paintings by local artists,*

*Margret Ryan & Leon Davies - will be
drawn on the night*

*These paintings have been
kindly donated to the appeal to
help raise extra funds*

Meals £5.00 each:
Chicken Curry/Beef
Curry/Lentil Stew

Enquiries: Tel: 01736 757369

Email
nancy@rainbowlodge.co.uk

Christmas at the Old Foundry Chapel



The Old Foundry Chapel will be decking the halls with fir and holly and switching on their fairy lights for their Christmas events and workshops.

Mrs Christmas takes residence in the chapel on the **2nd of December**. Join her on Saturdays for wonderful stories of Father Christmas, his reindeer and the elves along with some singing of Christmas songs in a magical secret setting. There will be lots of laughter and a gifts for the children.

Many shops within the chapel will also be running some special promotions on Saturday the **2nd of December** to celebrate Small business Saturday. We want to encourage everyone to shop locally and support local traders. Twigs and Greens will be running a wreath making workshop on this day, the chapel will be brimming with festivities.

Finally, there will be late night shopping on Thursday evenings, when the shops will be open until

8pm. Duckies will be hosting their fabulous supper club showcasing a delightfully delicious menu not to be missed.

Watch out for dates of drop in workshops with Makers Boutique studio.

Pop along to the Old Foundry Chapel for further information or keep updated on our facebook page.....

A warm welcome
awaits

Christmas Tree Festival



at St. Gwinear Parish Church

This year our theme will be

A Celtic Christmas

Do

come,

and enjoy

magical atmosphere,

the smell of pine trees

and mulled apple juice.

Relax with festive treats too!

Opening times:

2-4p.m.

16th-24th ,

then 27th -29th Dec.

At 2 pm on the 28th join our one
mile walk from Wall Chapel's

'Cotehele' garland to Gwinear

Church tree festival.

See 'What's On' in

gwinearparishchurch.org.uk



Lawrence Butcher Chimney Sweep

**Brush n Vac, Cows fitted,
Camera Inspections, Solid Fuel
Servicing & Repairs. Carbon
Monoxide Alarms fitted**

**Enfield Farm, 30 Hayle Rd ,
Fraddam, Hayle TR27 6EH**

01736 850033

07966 547829

loloubutcher@aol.com

Bodriggy Academy Bug Mansion Gardens & Woodland Walk

This year the Bodriggy gardeners carried out numerous tasks in the gardens. Firstly tidying up the areas and relaying paths, then planting wild cyclamens, woodland anemones, bluebells, snowdrops and foxgloves in the woodland area. Various wild flowers and plants to attract wildlife were planted in the other garden and wildflower seeds were scattered.

The children made large butterflies in their Out of School Tate Club and painted slates to form a path by the Bug Mansion.

During the summer I met 1st Hayle Brownies on the walk with Brown Owl and they brought along their mini spiders which they had made and these were quickly put into place in the garden. We had a very interesting evening and they talked about their projects and asked lots of gardening questions.

1st Hayle Beavers made a fantastic hedgehog house and this is situated in the wildlife garden.

At this year's South West in Bloom Awards I was thrilled to receive an award of outstanding Level 5 which I think was well deserved by all the organisations involved. I would like to say a Big Thank You to Bodriggy Academy, 1st Hayle Beavers and 1st Hayle Brownies for making this possible, and also to young Theo

who made a brilliant spider which somehow found its way to the top of a very big tree!

Long may these gardens continue to give pleasure to people in the community and visitors to the area who always give such good feedback on what we do.

Sandie Morgan, Hayle in Bloom

ZIP INN
Repairs & Alterations:
Soft Furnishings: Loose
Covers
Pat 0797 973 0738
Hayle

Day Care Centre Walk



On Saturday 30 September members of Hayle Day Care Centre Staff, trustees and volunteers took to the high road to complete their third Charity walk.

This year they walked from Marazion to the Centre in Hayle and

HANDYMAN

EXPERIENCED & RELIABLE

“NO JOB TOO SMALL”

**Completing all those jobs
you've been meaning to do!**

Painting / Decorating
Repairs / Flat-pack Assembly
Fencing / Sheds

CONTACT
RICK HARVEY
01736 752811

**Merry
Christmas**



HAYLE DAY CARE CENTRE

Commercial Road, Hayle

An affordable day care facility for the elderly of Hayle, St Ives and district

Transport • Freshly cooked meals

Also includes bathing and hairdressing
Therapy and lively social interaction

Always a friendly welcome

Call 01736 755000

YOUR OLD TAPES ONTO CD



YOUR OLD CASSETTE, REEL TO REEL TAPES OR
33/45/78 RPM RECORDS ALL
SAFELY TRANSFERRED ONTO CD

Your precious memories saved forever. Your own photos, information & dedications can be included on the CD/DVD cover.

Also now: old VHS video tapes & photos all onto DVD.
Digital Recording for Singers & Musicians, Songwriters, Poets, Story Tellers, etc.
Also Musical Backing Tracks provided.

Contact Steve Nunn. 01209 719 481
www.cornmillstudio.co.uk
Email: cornmillstudio@aol.com

for the first time they had a dry day.

This event is held to raise vital funds for the continuance of the excellent service that the Centre provides on a weekly basis for the elderly of Hayle and St Ives.

We thank all the individuals who have kindly sponsored this walk and who actually participated in the walk.

We anticipate that to have raised in the region of £2,500 which will go a long way to provide the quality service that we continue to give to our elderly members of the community.

The Centre is open Monday to Friday and all are welcome.

Contact 01736 755000 and speak to the manager.

David Raymer

Chairman, Hayle Day Care Centre Trust

Christmas Trivia

The first Christmas card was designed in 1843 by J C Horsley

A New Name is Born

After much deliberation we all thought a change of name would be better for the guitar night at the Passmore on a Wednesday, so the Hayle Guitar Club came into being,

The Ladies Room
@
TJ's Barber Shop
2 Market Square,
Copperhouse, Hayle
Ladies Cuts from only
£10.00.

Just walk in, appointments not always required. All aspects of hairdressing available.

Tel 01736 757000



still the same venue where guitar players of all standards meet and bring in their music for everybody to play with them. We are also trying to build up a set of songs that we can play at various charity venues around our area.

If you are a country or a folk player and wouldn't mind showing us how to play your style, come on down, we'd love to see you and would enjoy your music.

The Red River Rock Band, an offshoot from the guitar club, performed at Heathcotes Club in Pool in the middle of October and raised £350 for St Julia's Hospice toward the refurbishment of their kitchens. On 11 November we played at the Portreath village hall in a concert for the Macmillan Nurses and raised around £640.

After a good session we find nothing better than going up to Louie's at the Sea Pearl Garden Chinese for one of his special curries.

Dave with the Hat.

DIRECT TRANSPORT
Removals & Storage
LOCAL & NATIONWIDE
Full & Part Packing Service
Call for a free
competitive quote
Tel: 01736 603018
or 07476 223221
7 days personal service



Looking for that ideal gift or simply something for yourself?

Come in and look at our unique handmade gifts for him and her, including Seaglass jewellery, leatherwork, art, glassware and wood items. All handmade in West Cornwall.

No matter what the occasion we have something you will like and at a price to suit your pocket.

Visit us at **55 Penpol Terrace**

Ph: **07702 090684**

www.wellydog.co.uk

TJ's Barber Shop
2 Market Square,
Copperhouse, Hayle.

Opening hours
 Tue 9 - 5pm
 Wed 9 - 6.30pm
 Thur 9 - 5pm
 Fri 9 - 5pm
 Sat 9 - 4pm

Over 20 years experience in
 Modern & Traditional Barbering.
 No appointment required.
Tel 01736 757000

ANGOVE SPORTS

**COPPERHOUSE,
HAYLE.**

Tel(01736) 752238.

**For all sports equipment,
clothing, footwear
and fishing tackle.
Rackets repaired
and restrung.**



Dave Dobson [®]

**Building & Property
Maintenance
Hayle Cornwall**

Tel 01736 755964

Mob 07759 233134

**Genuine 24 Hour Call
Out**

dave.dobson@hotmail.co.uk

Hayle's Neighbourhood Plan – Off for Review

The consultation closed on August 4th and we received 114 comments.

These were reviewed by the Steering Group and changes made to the plan. The revised plan was approved by the Town Council on the 19th of October and then submitted to Cornwall Council for review.

Cornwall Council will first undertake a legal review to ensure that everything is in order, they will then commence a six-week consultation followed by a referral to an independent examiner.

Assuming all goes well, the plan will then go to a referendum of registered voters in Hayle Parish and, if approved by more than 50% of the vote, will be adopted as planning policy.

All of the documents are on our web site: <http://np.hayle.net>. You can also sign up there to be on our mailing list for updates.

**John Bennett, Chairman,
Neighbourhood Plan Steering
Group**

**HOSKING
ROOFING**

* GRP FLAT ROOFING * TILING
* SLATING * REPAIRS * NEW ROOFS

Tel 01736 758458

Mob 07909 943 098

Cornwall Council Community Network Panel

The next Cornwall Council Community Network Panel will be held on the 4th of December at St Ives Secondary School at 6.30pm. **The meeting is open to ALL.**

On the agenda we have:

A presentation and question and answers from Devon and Cornwall Police Commissioner, Alison Hernandez.

A briefing about Highways Maintenance by Mike Peters who is the West Highways and Environment Manager for CORMAC.

We will also be doing a short workshop to gather information to enable local community organisations to partner with the Clinical Commissioning Team and the local Health services. If you are involved in a community or voluntary sector organisation and would like to find more volunteers or participants, it would be really useful to have you there as the information gathered will be used to populate a database for a website that will be used by health practitioners and the general public and so could help increase numbers for your group. .

Q ..What award goes to designers of door knockers?

A.. A No Bell Prize.



BUSH MONKEY GARDEN SERVICES

Keep it simple Keep it local !
Over 25 years experience with that personal touch.

Qualified and fully insured
Lawn care

Planting schemes

Weed & insect control

Tree hedge & shrub pruning

Garden maintenance & design

Decking Patios

Pressure washing Call Anthony for free
no obligation quote or advice.

07825 881 078

bushmonkeygardenservices@yahoo.co.uk

Copperhouse Jewellers & Engravers

JEWELLERY REPAIRS

SECONDHAND GOLD BOUGHT

AND SOLD

WATCH BATTERIES £5 FITTED!

TROPHIES & MEDALS

ON SITE ENGRAVING

NOW OFFERING KEY CUTTING

CUT WHILE YOU WAIT FROM

£3.50

61 Fore Street, Hayle
TR27 4DX
-01736 753203-

**Private and small group tuition in
Mathematics and Mandarin
Chinese**

SATs / GCSE / A-level / 11 Plus
Xuxin Pooley BSc MSc PGCE

Tel. 07889228998

www.cornwallmathstutor.co.uk

RU4U3A?

People hear of the U3A or “University of the Third Age” and immediately jump to the wrong conclusion that it’s an academic organisation – that’s certainly not so for the Hayle branch. The “university” name is based on the

principle that we can form groups to pursue anything that interests us and the “third age” part refers to the fact that it’s intended for those who are at least partly retired although there is no minimum age requirement.

I’m sure that the opinion shared by most of our members is that the most important aspect of our U3A is to provide an opportunity for friendship with people of similar interest.

Our largest group is the “social” which meets fortnightly on Thursdays 2-4pm at Hayle Day Care Centre Annexe when we have a visiting speaker or something presented to one of our members to share their knowledge or life experiences followed by a chat over a cuppa.

JC ELECTRICAL

Your complete 24 hour Electrical Service

**Rewires • New Build • Lighting •
Showers • Extra Sockets • Heating**



City & Guilds Qualified (Tests to BS767)
Part P registered

Prompt and reliable friendly service

Free estimates and all work guaranteed



Office: 01736 754543

Mobile: 07739 577549



The **Art** group meets indoors throughout the year to tackle challenges they set themselves, with several artist-led sessions.

Whereas in the **Creative Writing** group they enjoy developing fascinating tales from a word or thought and then entertaining the rest of the group by sharing their stories.

The **Poetry** group also produces their own work, but in addition they read published poems. The **Reading** group has a monthly discussion of books recommended by the library.

There is a **History** club which meets to watch DVDs from the extensive headquarters resource centre.

At the **Film** club they watch whatever films take their fancy.

The favourites of the **Games** club are Scrabble, Rummikub and Carcassone.

Finally there's the **Luncheon** club which goes to various local eateries for a sociable meal at a reasonable price.

So, those are the groups we have at present, but if members wish to form new ones we are always willing to consider fitting them in.

The first visit is free but thereafter people are expected to become members. The annual fee is £10 and £1 for each attendance.

Chairman Mike Stuckey 01736 753755

Secretary Heather Stewart 01736 710045

A BURSTOW PLANT HIRE LTD

Various size mini diggers with attachments including stump planers, post knockers, breakers, augers & whackers available.

Dumpers, trailers and more.

Competitive delivery prices.

Available self drive or with fully qualified & competent operator.

Fully insured.

Based in Hayle



07849 387700

01736 602196



ashley_burstow@yahoo.co.uk

Jennifer Rogers, Curtains & Blinds

Tailor made curtains, blinds and soft furnishings offering a variety of design, fabric and trim options.

Professionally handmade individual to your requirements.

email

pinksflowers@btinternet.com

Facebook www.facebook.com/CurtainMakerCornwall

CurtainMakerCornwall

Telephone 07525 858279



**Specialist Building
Surveyors**

Asbestos Surveys
Buildings Surveys
Damp Diagnosis
Fire Risk Assessments
Timber Decay
Mundic Testing

Craig J Shepherd

BSc(hons) Building Surveying, CSRT

01736 752012

07890 528 312

info@cjshepherd.com

www.cjshepherd.com

Success for Hayle Surfers



Two Hayle Surf Lifesaving Club members - EMILY CORIN (GBR open) and MARCUS OR (GBR youth) have returned as individual podium winners after representing Great Britain in the 2017 European Surf Lifesaving Championships held in Belgium.

Marcus, a former St Ives School pupil, who has just successfully completed his A levels at Truro College added, "It's the most amazing experience to be European sprint champion. I have trained so hard just for a chance of this moment".

It has been a busy year also for Emily who has just completed her Biological Science Degree with a first at Exeter University.

Final individual results; Emily Corin 1st ski, 1st ocean team relay, 3rd board,

Marcus Or; 1st beach sprint, 2nd ocean team relay, 3rd beach flags and 3rd beach relay.

The contest is the pinnacle of this

Cabinetmakers & Joiners
**JOHN
ANDREWS**

Windows, Doors & Staircases
constructed in soft wood and
hardwood.

Entrance gates

Fitted Furniture.

Restoration & repair work
including Boxframe windows.

Sash cords. Free estimates .

email:

johnandrews123@btinternet.com

www.johnandrewsjoinery.co.uk

Mob 07765 341616

tel 01736 755423

year's Surf Lifesaving sporting calendar; it is a huge individual achievement and accolade for their Hayle Surf Lifesaving club to have two members chosen to represent the country..

Both athletes greatly appreciate all the help and support from the coaches at Hayle Surf Lifesaving Club. This is Emily Corin's third GBR cap having previously competed at the 2014 Worlds in France and 2016 Sanyo Open Cup in Japan. She also wishes to thank Glenn Eldridge at Ocean Sports, ICON craft, Robies Robes & Funky Pants. This is Marcus' third GBR youth cap having previously competed in the 2015 European Championships in Spain and the



abode
Property Agents

We deliver a fresh, passionate
and personal approach to
selling your property.

Why not contact us for a free
market appraisal?

01736 756681

abodepropertyagents.co.uk

Merry Christmas and a Happy New Year to all our customers

WEST CORNWAALL *plastics*

Stockist of:

PVC Fascia & Soffit Boards
PVC Guttering
PVC Window Trims
Glues & Sealants
Screws & Fixings
PVC Cladding

telephone

01736

759444

wcpl.co.uk

Suppliers & Installers of:

PVCu & Aluminium
Windows
Doors
Bi-Fold Doors
Composite Doors
Conservatories

6c Guildford Road Ind Estate, Hayle TR27 4QZ

Country Skittles



BOOK YOUR XMAS FUN NOW!

-  Skittles Lanes
-  Great Food
-  Shooting
-  Games
-  Bar



Opening Times

Mon to Fri: 6pm to 11pm

Sat: Noon to 11pm

Sun: Noon to 10:30pm



Townshend • Hayle • TR27 6ER

01736 850209

www.countryskittles.com

2016 World Championships in Holland. He especially wishes to thank Ryan Doble, Andrew Caddy, sports physio Christina Stewart and HAGOR VOR for all their time and support. If you are interested in helping support or sponsor either athlete, they may be contacted via Facebook.

An inclusive, family friendly club promoting beach safety, fitness, fun and a competitive spirit. Please see our website for membership details and news.



SANTA CLAUS OR FATHER CHRISTMAS?

Older people have been brought up with the tradition of **Father**

Christmas, who is

the personification of Christmas. However, he probably has his roots back in pagan (pre-Christian) times, especially as he was originally connected with partying and feasting celebrating the middle of winter. Only later was he the bringer of gifts. The modern tradition of **Santa Claus** came to this country from the Netherlands via the USA. He was actually a real person - a 4th century Christian bishop of Myra in what is now Turkey. His name is **Saint Nicholas**, which has been shortened to Santa Claus (Sinterklaas in Dutch). He was well-known for his generosity to the poor. One story



tells of him giving a sack of coins to provide the dowries of the three daughters of a poor man, so that they would not have to become prostitutes.

Of course he wore bishop's clothing and was quite slim, as far as we know. The portly figure in a red and white costume we have today was invented in the United States.

His feast day is **6 December**, which is when people in many countries give gifts rather than at Christmas. So, do remember him on that day and perhaps do the same as he did - and give to the poor of today.



JOHN POLLARD

Cornwall Councillor
Hayle North

To contact me:

[john.pollard@](mailto:john.pollard@cornwallcouncillors.org.uk)

Merry Christmas

cornwallcouncillors.org.uk

07967272808

Cornwall Council:
0300 1234 100



01736 755170 - 07761938183

From a dripping tap to a complete bathroom

Free quotes and planning

Emergency service – when you need us were there

Water industry approved

Cliffords4@btinternet.com

Or find us and photos on Facebook at

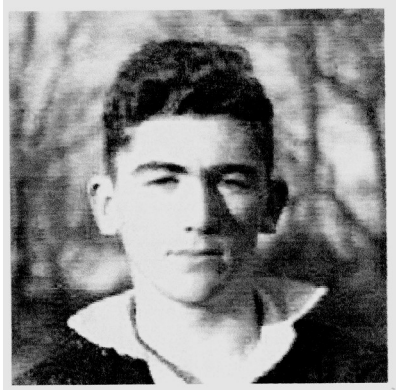
[cliffordsplumbing and bathrooms](http://cliffordsplumbingandbathrooms)



Rick Rescorla...his young days in Hayle.

The personal story by Mervyn Sullivan.

Continued from the last issue.



We went to Penpol School, much smaller than it is today. We made many friends, some now still living and some passed on. Friends such as Vernon Hosking, Owen and Colin Philp, Bevan Phillips, Frank Nuttall, Godfrey Runnalls-Thomas, Wendy Gloyn, Margaret Shearer, Trevor Power, Joan Sleep, Cora Williams, Brian Goodman, Roger Hurrell, Merle Trembath, Norman Woolcock, John Lees, Brian Heather, Roger Timmins, Maurice Rothero and many more ... the list goes on.

Our headmaster was pipe-smoking Mr Lester Mitchell and his deputy was his wife. Both very strict and very respected teachers. The whole school carried a pale blue haze and the smell of pipe tobacco, the memory of which still lingers with me today. We lined up for assembly in the then open court yard, now covered in to help accommodate

Blue Bay Cafe

Blue Bay Cafe
Sandy Acres
TR27 5BA
07817614152

Gourmet burgers & wraps
Breakfast
Barista made coffees
Delicious home made cakes
Weekend specials
Open Wed-Sun 10am - 4pm
Closed Mon & Tue
Open Christmas & New Year

Sales
 Hire
 Service

HSC Mobility

Serving the South West

Tel: 01736 755 927

Mobility House, Unit 16, Marsh Lane Industrial Park, Hayle, Cornwall, TR27 5JR

Opening Hours: Mon - Fri, 9am - 5pm

far higher pupil numbers. Classes had a roll call, followed every day, by the reciting of the times table. The whole school echoed with the rhythmic chant of numbers ... the basis of arithmetic, that once learned would never be forgotten. No calculators or computers in those days. No ball-point pens, only nibbed pens and ink wells which had to be regularly refilled at the student "ink monitor".

The two main dinner ladies were Miss Richards and Miss Middlin, both of whom lived in Penpol Road, and when on duty had to be addressed as Miss. Two lovely smiling motherly ladies. Rick would always talk of our happy primary school days and its local characters whenever he returned to Cornwall from America.

After the restriction of movement was lifted after the War, most of the Foundry end boys, including Cyril and myself would spend long summer days swimming on the Weir. The main attraction there was the French crabber. A very large wooden boat which mysteriously appeared overnight during the war and was abandoned on the sand, opposite the Dynamite Quay. There are many theories as to why and where it came from, but the reasons given were never proven. When the hulk became waterlogged and started to slowly break up, it was possible to swing off the rigging and swim in the crystal clear flooded water in the hull.

Cyril was a very powerful swimmer and would dive into one end of the boat, swim the whole length and back entirely under water by swimming in and out of every flooded room and



TP Wills & Probate.
Wills and Estate Planning Consultant.

"Where there is a will there is a way to protect your family"

- * WILLS * TRUSTS**
- * ADVICE FOR SENIOR CITIZENS**
- * POWER OF ATTORNEY**
- * PROBATE ADVICE**
- * CARE FEE PROTECTION**

Call Tim Poole
01736 758418 or
07900 323939



HARVEY

THE HOLIDAY COACH NEAR THE COAST



- LARGE FULLY ENCLOSED GARDEN**
- TRAIN VIEWING DECK**
- SWINGS AND PLAYHOUSE**
- COVERED CYCLE STORE**

WWW.RAILHOLIDAY.CO.UK
01503 230783

hold. An amazing and frightening feat. We both went to Penzance Grammar School. The Headmaster was Mr T Craske Rising. About six of us travelled every day on the 8.20am steam train. Being the character Cyril was, he elected himself as the unofficial train monitor, to which none of us had any reason to object, in fact we welcomed it.

We had to be in school for assembly by 8.55am, no later, or it meant a visit to the headmaster's office for an explanation. Trains then, as now, occasionally ran late. On the "late" days Cyril, in his self-appointed role as train monitor, would tell us to remain outside the headmaster's office while he went in alone to give the reason why we were late ... and every single time, of which there were many, he would emerge with a smile and say "Everything is sorted. Go to

your classes... no detentions. What he said we will never know ... except that it would have been delivered with his persuasive charm. He was a very willing to learn student and aimed to succeed at the top level in all of his academic subjects. Also, being a strong athlete, he was determined to win every event he entered on school sports day. One such example was when he entered the discus event. He not only broke the existing school record, but set a new record which, it's thought, still stands today, some sixty four years later. And another time, while playing for the Hayle Colts rugby team at Redruth, another Hayle player, playing in his first game for us in the position of fly half, was taking some very heavy and near illegal tackles from one very large Redruth member playing at wing forward. Cyril, not happy with this, told the



TJ'S CARPETS LTD.



**New Showroom at Tolroy Garage,
58 Mellanear Road, Hayle TR27 6HF**

Come and see our wide selection of carpets & vinyls,
laminates and patterns

Our famous home selection service still available

Full range of flooring accessories

Call Now! 01736 757540 or 07976 608215

Free measuring & estimate service

"Before You Buy, Give Us A Try"

referee to blow his whistle to stop the game. Cyril then walked over to the Redruth player and said "Look my ansome, you're hitting our new young player a bit too hard and perhaps putting him off from ever playing again. So I'll give you two options. Firstly, I'm not saying don't tackle him hard, but tackle him fairly and legally. Or secondly, we will go behind the Redruth stand and sort this out man to man, and when I come back on the field, I'm tell you that you will be in the first aid room and won't be playing any more in today's game, So, it's up to you." Needless to say the opposition player elected to stay on the field. As the ref blew the final whistle Cyril ran over to the Reds player, shook his hand, put his arm around his shoulder, said "thank you for that" and they walked off together, chatting, to the Redruth club bar to have a pint together. I can vouch for this story as I was playing in the same game.

And for the rest of his life Rick would always be looking after and trying to help his fellow man.

If there was one person you would want beside you in a time of trouble, it would be Rick....

to be continued...

(with thanks to Penpol School reception staff for supplying all student's names.)

*We at the Pump wish
you all a Great
Christmas and a
Healthy and Happy
New Year*

YOGA and PILATES for beginners.

**Lelant Village
Hall**



Yoga - Monday and
Friday at 7.45pm

Pilates- Monday
and Friday at 11am

Tuesday at 7.30pm

Gwinear Village Hall

Yoga- Sunday at 10am

More advanced classes are also
available

Contact Kim - **0775 155 2313**

Website - Hopkins-health.co.uk

PAUL SHERRIS

**Hayle's only
local family owned**

**FUNERAL
DIRECTOR**

**Private Chapel of Rest
Pre-Payment Plans
available**

West Terrace, Hayle.

TR27 4JS.

01736 753969

Day or night

Cornish Place Names Quiz 136

Hidden in the sentence is a Cornish place name, i.e. Mildred, Ruth and Harry all live here = Redruth

1. Calling to no-one in particular with the answer.
2. Padstow hits and Bayswater flops—they're all the same near Looe. *(Answer is not Padstow or Looe)*
3. It's not a lumpy horse—it's a camel, for delivery to the zoo.
4. It would take hell and high water to move anyone from here.
5. Farmers make hay leisurely around this Penwith town.
6. Is it a scam borne out of Trevithick's house?
7. Andy Capp, 'enry, Neil etc. all came from this ancient borough.
8. The bushel, stone and hundredweight are all measured in this Kerrier town.
9. In this sombre age you'll find this quiet village.
10. In times past I've settled for a visit to these narrow streets.
11. Parallel, anti-clockwise, it's all the same near the estuary.
12. Downalong downside, you'll find this main road village.
13. Tram excursions are commonplace here on the A394.
14. We must renew Lyn's fishing permit here.
15. It's all uphill, acknowledged the walker, going to church.

To win a prize voucher worth £20 to be spent with any of our advertisers, send your answers by **13 January**, along with your contact details to: editor@haylepump.org.uk or use any of our drop-off points on page 2.

Answers to Cornish Place Names Issue 135

1. St Day
2. Goonbell
3. Callestick
4. Penhallow
5. St Erme
6. Fowey
7. Roche
8. Lanivet
9. St Eval
10. Padstow
11. Pentire
12. Antony
13. Kingsand
14. Cawsand
15. Torpoint

The winner, drawn at random was: Viv Hocking of St. Erth



Club Listings

Hayle in Bloom. Last Mon. of the month, (not Aug & Dec) Passmore Edwards Institute 7pm.

www.hayleinbloom.org.uk

Hayle Breezers Group Thursdays. 1.30pm Passmore Edwards Inst. April Hogarth 0781 376 7071

Bob Scales 01736 751735

Hayle Canoe Club Pool Sessions 2nd Sunday in the month Nov.12—April 8 at St Ives Leisure centre 6.30—8.30pm. All welcome.

secretary@haylecanooclub.co.uk

Hayle Community Archive.

Open Tuesday & Thursday 10 a.m. – 1p.m.:Tel 01736 753962, email:

haylearchive@haylearchive.org.uk

Facebook: Hayle Community Archive.
Twitter: @hayle archive

Hayle & District Bowling Club.

1.00pm every Wednesday. Short Mat bowling indoors during winter 01736 753565

Hayle Film Club. Films shown a7.30 p.m. at The Passmore Edwards Institute. Donna 01736 753184.

www.haylefilmclub.org.uk

Hayle Flower Club. 4th Wed. of the month at 7.30pm, in the Methodist Church Hall, Chapel Hill.

Tel: 01736 740437

Hayle Friends Group for Children's Hospice SW "Little Harbour" meet informally once a month under chairmanship of Mary Trevarthen 01736 753452

trevarthen.trevarthen@btinternet.com

Hayle Guitar Club Wednesdays 7p.m.—9.30p.m. Passmore Edwards Institute.

Hayle Harbour Users Association

First Monday of each month, 7.30p.m. Royal Standard Pub R Lello 01736 757632

Hayle Judo Kwai meeting Unit 7 Rospeath Industrial Estate, Crowlas. Tuesday & Thursday.

Sensei Richard 01736 740723 or Karen Deacon 0779 209 9979

Hayle Library Reading Group. 2.p.m first Wed. of each month .

Hayle & District Lions Club. 2nd and 4th Tuesday of every month, 7.30pm at Passmore Edwards Institute

John Broadbridge 01736 752721

Hayle Lawn Tennis All ages and abilities welcome. Tremeadow Terrace, Hayle 01736 850843

www.haylelawnclub.co.uk

Hayle Local Vocalz - a 65 strong mixed voice adult choir. Mondays, 8pm, St Elwyn's Church Hayle. 07950 585787

Hayle Model Boat Club. Wednesday evenings 7-9pm & Sunday mornings 10-12 noon, meeting at green chalet by Hayle outdoor swimming pool.

Tel: 01736 755516, or

Les on 01736 754254

Hayle Model Railway Club & Duchy Railroaders Club Rooms Unit 5, Praze Business Park, Praze-an-Beeble. Mon. & Thurs. 7pm – 9.30pm.

Bob Mims 01736 757910

bobmims@live.co.uk

Hayle Meanderers Every Wednesday.10.30am Commercial Road car park. Free, + contribution to carshare. Eddie Downing 01736 364673

Hayle Old Cornwall Society. First Friday of each month. Oct, to May at Passmore Edwards Inst. 7.30p.m. Maria Prosser 01736 755072

Hayle Pilot Gig Rowing Club. . Rowing out of Hayle Harbour most Tuesdays and Thursday evenings chair@haylegigclub.co.uk

Hayle Penwith U3A

Hayle Day Care Centre .

Chair Mike Stuckey 01736 753755

Sec. Heather Stewart 01736 710045

Hayle RNLI meets from March to November at 7.00pm the 2nd Wed. of the month at Unit 5 Hayle Industrial Park.

Tel 01736 753567

Hayle Rotary Club Fortnightly on

Mondays 7pm at the White Hart

Hotel. Dec 4 & 18, Jan 15 & 29

D.Raymer 01736 755029 or

T.Osborne 01736 793596

Hayle Surf Life Saving Club

Riviere Towans Hayle TR27 5AF

Captain: Dave Parker 01736 755303

Heyl St Piran Singers Every

Wednesday at Hayle Day Care

Centre 7.30 to 9.30pm

Ann Thomson 01736 752335

Hayle Twinning Association

2nd Monday of each month at

ASDA meeting room 7pm for

7.15pm start.

Sonia Glasson 01736 754531

Heyl Town Band Rehearsals Tues

& Thurs 7:30pm – 9:30pm, Juniors

on Thursdays 6:pm – 7:00pm

Macmillan Cancer Support

Meet at Three Trees, 16 Penmare

Terrace, Hayle on most Thursdays

at 7.30pm New members welcome

Suzanne Berry 01736 753635

Phillack Tower Bellingring every

Tuesday at 7.30pm Beginners most

welcome. Enquiries - Tina Morgan

01736 756567

Praze Hayle Choir Every Tuesday

in the Methodist Church Hall 7.30pm

Don Metcalf 01736 757720

Royal British Legion Passmore

Edwards Institute. Every Mon. Wed.

& Friday evening and Sat. afternoon.

Mr John Bawden 0774 327 6412

Save Our Sand For date and venue of meeting, go to www.sos-hayle.org.uk.

Or visit Facebook or to go on our

mailing list contact

saveoursand@talktalk.net

Shore Surf Ladies Only &

Juniors Surf Club All abilities

welcome. Every Saturday 9 – 11am.

01736 755556 Beachline 07855

755556 info@shoresurf.com

St Erth Concert Band Rehearsals

Tuesday 7.30 to 9.30pm in

Methodist Church Hall

Paul Roddy 01736 740486

www.sterthconcertband.co.uk

St. Erth Friendship Club for the

over 60s Tues 2—4pm £1.50 per

session St Erth School Hall

01736 850758

St Ives and Hayle Community

Choir Tuesdays 2pm to 3.30pm at

St Anta Church Hall, Carbis Bay

07950 585787

Table Tennis for Fun, every Friday

at 2pm at Hayle Methodist Church

Hall, Chapel Hill, Hayle. Only £2 .

John Nunn 01736 759686

W.I. Hayle 1st Tuesday of the

month, 7.00 pm

Hayle Day Care Centre

Margaret Stockton 01736 756007

To appear on this page free of charge drop in details to:

Passmore Edwards Institute

Angove Sports,

The Farm Shop or email

editor@haylepump.org.uk

To book Phillack Church Hall please contact:

Mary Marsden 01736 756669

- | | | |
|-----------------------------|-----------------------|----------------------------------|
| 2 1st Choice Paving | 28 Dave Dobson | 9 Passmore Edwards |
| 20 5 Degrees West | 18 Dave Thomson | 39 Paul Sherris |
| 33 Abode | 9 David N'jie | 13 Philips Pasties |
| 5 Aggie Panthus | 18 Des Button | 15 Plantech |
| 17 All Aerials | 20 DIAL | 25 Rick Harvey |
| 6 A. McDonald | 27 Direct Transport | 21 Seymour and Jago |
| 28 Angove Sports | 11 Drecklys | 21 Shoreshine |
| 19 Big Pink Tree | 9 Duckies | 10 St Erth Cars |
| 21 Biz and Bytes | 17 Farm Shop | 14 Sylvia's Exercise |
| 11 Blewetts | 3 Flowertime | 23 T. Hosking |
| 36 Blue Bay Café | 13 Foot Care | 27 T J Barbers |
| 31 Burstow Plant Hire | 8 Gallery Café | 38 T J Carpets |
| 29 Bush Monkey | 37 Harvey Rail | 37 T P Wills |
| 19 Cafe Riviere | 6 Hayle Cycles | 11 Transformations |
| 14 C.A.M. Properties | 25 Hayle Day Care | 16 Webb & Philp |
| 8 Castaways | 36 HSC Mobility | 27 Wellydog |
| 24 Chimney Sweep | 30 J C Electrical | 33 W. Cornwall Plastics |
| 30 Chinese Lessons | 31 Jenny Rogers | 43 Winns Funeral |
| 12 Clare Mungles | 32 John Andrews | 25 Zip Inn |
| 35 Cliffords Plumbing | 35 John Pollard | Pick up points in bold. |
| 29 Copperhouse Jewel | 5 Julia Woodhams | Also at Library, Surgery, |
| 26 Cornmill Studio | 39 Kim Hopkins Yoga | Copperhouse P.O. Premier |
| 7 Cornwall Chiro Clinic | 26 Ladies Room | Convenience Store |
| 34 Country Skittles | 6 Mad Hatter Tea Room | Warrens at Foundry, |
| 32 CJS (Craig Shepherd) | 15 Martin Sinclair | McColls, Launderette, Old |
| 13 Dapper Dogs | 4 Paradise Park | Foundry Chapel, Spar, |
| | | Angove, Hospice Shop etc. |

W J WINN FUNERAL DIRECTORS



We are here to help you 24 hours a day

- Funeral Pre-Payment Plans
- Memorials
- Private Chapels of Rest

WJ WINN

Trenwith Terrace
St Ives TR26 1QE

Tel: 01736 793029

WJ WINN

69 Fore Street
Hayle TR27 4DX

Tel: 01736 752124

CHARLES BRYANT

North Road, Goldsithney,
Cornwall TR20 9JY

Tel: 01736 710318

MARAZION FUNERAL SERVICE

Back Lane, Marazion, Cornwall TR17 0HE

Tel: 01736 710318



Part of Dignity plc. A British Company.





Yes, it's that time of year again when we all have to start thinking about buying presents, cards and of course lots of food and drink.

Even Santa is getting ready, finishing off all the toys, checking his list of both good and naughty children and ensuring his sleigh and reindeers are all ready for the festive season.

Hayle & District Lions has phoned Santa on his new iPhone 8, and we are pleased to tell you that he will be coming to Hayle again this year with his sleigh. He enjoyed meeting you all so much last year he has decided to return and give each of you a small gift. So please come along and see him during his travels around Hayle and let him know what you would like in your stocking this year.

Below is a list of dates & venues where you can see Santa, his elves & helpers.



Sat 9th December

10-4pm Lidl supermarket, Hayle

Wed 13th December

6-7pm touring the Connor Downs Estates along Turnpike road

Thurs 14th December

6-7pm touring Pathway Fields, Highlanes & Queensway

Mon 18th December

6-7pm touring Mount Pleasant, Trelawney, School Lane, St John's Street

Tues 19th December

6-7pm touring Madison Close, Pools Court, Trevassick Fields (Court)

Sun 24th December

10-4pm ASDA Supermarket, Hayle

Hayle & District Lions
Club wish
you all a Very
Happy
Christmas

