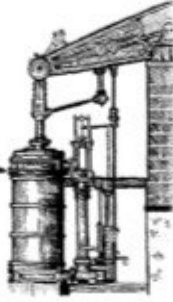




Issue 146
Aug/Sept
2019



HAYLE PUMP NEWSLETTER

Judges Rod Pooley and Andy Cole enjoy a game of boules with Hayle in Bloom Chairman Richard Barber and Neil Mason



*Free! thanks to our volunteers and advertisers.
Circulation 2500*

Hayle Pump Newsletter

Passmore Edwards Institute, 13-15 Hayle Terrace TR27 4BU

The Pump is produced by volunteers as a community newsletter.

NB *All articles accepted are not necessarily the view of the editorial team.*

View online at www.haylepump.org.uk

Editorial team contact

editor@haylepump.org.uk

Advertising Jeff Turk

ads@haylepump.org.uk

Phone 01736 752319

Web site John Bennett

webmaster@haylepump.org.uk

Team members

Sarah Turk

Stephen Murley

John Cole

Send your adverts to

ads@haylepump.org.uk or use
drop off points

Advertising Rates

1/8	63 x 47.5	£10
1/4	63 x 95	£15
1/2	Not available	

Subscriptions

For 6 issues by post, please send a cheque or postal order for £3.90 made out to Hayle Pump Newsletter to:

Hayle Pump Subscriptions

35 Penpol Terrace,

Hayle TR27 4BQ

Please give your name and number as well as the delivery name and address.

Send any articles or copy to

editor@haylepump.org.uk

or drop off at

Angove Sports (Copperhouse)

The Farm Shop (Foundry)

Passmore Edwards Institute

(opposite War Memorial)

NEXT DEADLINE is

13th Sept 2019

1ST CHOICE PAVING

Drives, Paths, Patios, Landscaping.



01736 753087 07969 960128

www.1stchoicepaving.com

Clifton Terrace, Hayle.

THE HAYLE 20 - CARNIVAL - 19

This year's Summer Carnival takes place on Saturday the 3rd of August and the optional theme is 'Sail the Seven Seas'. We can't wait to see where people's imaginations take them, from Pirates, Mermaids and Surfers to Penguins, Giant Squid and Rainbow Fish parading through the streets of Hayle/
The procession leaves the recreation ground at 7pm.



Eva, Enya-Michele and Molly

Following on from the Royalty Choosing at Paradise Park in May, this year's Carnival Queen is **Enya-Michele Young**.

**Hayle Lion's
Fun Day
Sunday 4th August
11-4pm.**



Hayle Recreation ground.
Free entry, lots of stalls, bouncy castle, BBQ wagon, tea tent, cakes, fun dog show, gymnastic display and lots more.

**Natural & Organic Therapies
~ Clare Mungles ~**



**Massage, Indian Head Massage
Hot Stone/Warm Bamboo Massage
Organic Beauty Facials
Body Brush /Scrubs
Reflexology, Foot Pampers**

claremassage@yahoo.com
www.naturalorganictherapies.co.uk

07789760387

Appointments only

Unit 9, West Stables, Foundry Farm,
Foundry Lane, Hayle TR27 4HD

**Hayle in
Bloom
(HIB)**



The judging for the South West in Bloom competition is over for this year and Chairman Richard Barber would like to thank all members for their hard work in the run-up to judging.

He would also like to congratulate all those Hayle residents and businesses who have made the effort to beautify their premises and gardens and, thus, improve the overall feeling of Hayle.

The Gallery Coffee Bar

Always welcoming and friendly

Relax on our comfy sofas with
great coffee and
home-made cakes



**More than just
coffee....**

We also
offer breakfasts and a
variety of light lunches.



Find us at

**1 Chapel Terrace Hayle (by the
Viaduct)**

....See you soon

07765 229 764

Dogs (and well-behaved owners) are
welcome



*We are a Pre-loved Boutique
selling an extensive range of
quality label clothing, shoes and
accessories. Buying and selling on
commission is easy and we are on
hand to book in your clothes, bags
and accessories. Make money on
your once cherished garments, it's
so easy.*

**1 Chapel Terrace Hayle TR27 4AB
(by the viaduct)**

07765 229 764



Richard found his first judging experience quite challenging but, ultimately, very rewarding and he is looking forward to the results at the S.W. in Bloom Awards Day, this year, being held in Newquay on 11th October.

Feedback from the judges was encouraging and he is optimistic but counting no chickens just yet. We would like to thank the voluntary groups, Who Dares Works and Chaos for rejuvenating the Bouledrome in late June and, indeed, people have been seen playing Boules here recently. Remember, you can borrow a set of boules to use from the café for a small donation. The groups will continue to volunteer in Hayle on the last Thursday of each month. Well done you lot. Also, we'd like to announce that Hayle W.I. have taken over the care and maintenance of the 'Badger Bed' on Penpol Terrace on a permanent basis.

Finally and, sadly, we would like to mark the passing of well-known Hayle resident, Ann Foreman. Ann was a founder member of Hayle in Bloom and, from the Millenium onwards, was an organiser of the successful Adopt A Plot Scheme which operated throughout Hayle but, particularly, along the King George V Memorial Walk. In later life Ann cared passionately for Hayle's environment by relentlessly collecting litter and campaigning for new litter bins. She was, indeed, rewarded for her

contributions to the health of Hayle's environment when she was awarded Hayle Female Citizen of the Year in 2015. She 'hung up' her litter-picker on 1st June 2019 at the age of 94. She was dearly loved and is missed by all at Hayle in Bloom. The next meeting of the Bloom is on Mon. 30th September in Passmore Edwards Institute at 7.00pm. All are welcome. If you have any questions or ideas for Chair Richard Barber then please contact him : tel. 07821 112956 or email rbarber00@outlook.com



HAYLE ART SOCIETY

is holding their annual exhibition at Phillack Church Hall until 4th August. The exhibition will be open daily from 10am to 6 pm (10 to 4 on Sunday) and paintings, crafts, and cards will be on sale.

DIRECT TRANSPORT Removals & Storage

**LOCAL & NATIONWIDE
Full & Part Packing Service**

**Call for a free
competitive quote
Tel: 01736 603018
or 07476 223221**

7 days personal service

Julia Woodhams

MAR: NICHT: MBRCP

COMPLEMENTARY THERAPY PRACTITIONER

Aromatherapy, Reflexology,
Reiki Healing, Indian Head
Massage, Hot Stone Massage
and Aromatherapy
Facials with organic
oils.

For appointment or
enquiries



Ph: 07960 181497

01736 603397

Email: roo61@hotmail.co.uk

Gift Vouchers available.

THE FARM SHOP

31 Penpol Terrace, Hayle,
TR27 4BQ

Open 7 days a week

8am—5pm

**FOR ALL YOUR LOCAL
PRODUCE**

Fruit, vegetables, plants, flowers,
free range eggs, and Cornish
potatoes

NOW IN

New Cornish Potatoes

New Bunched Carrots

Local Strawberries

Summer Cut Flowers

Has your home been taken over by clutter?

Do you have paperwork that needs sorting?

If so, would you like to:

- * Feel better about your home
- * Gain more physical space
- * Be able to find things more easily?
- * Feel calmer and more relaxed at home?

Please give me a call for a friendly chat and to discuss what you would like to organise.

I offer a free initial home visit, with no commitment.

Contact Vanessa on 07791 248139, 01736 741542 or by email at vanessacooksey@icloud.com

There will also be mounted but unframed work for sale, the proceeds of which will be donated to St. Julia's Hospice. Raffle tickets will also be on sale, many of the excellent prizes having been donated by local businesses. Admission is free.



Hayle Lions President

Tony Jose pictured with Hayle Cricket Club's Youth Development Officer Tim Marrion and members of Hayle CC's youth section having presented the club with a cheque for £500 which was used to purchase a new bowling machine specifically for young cricketers. Tony commented that "he and the

THS

ThurstanHoskin
SOLICITORS

NEW HAYLE
OFFICE

YOUR NEW HAYLE LAWYERS

☎ 01736 230055

Established in Cornwall for over 40 years, we offer a high quality service, good value and expert legal advice on

- Property services and Conveyancing
- Wills, Probate, Trusts & Power of Attorney
- Commercial Property & Leases

We will also endeavour to help former Furse Saunders clients to recover deeds, documents etc.

33 St Johns St, Hayle TR27 4LL
Tel 01736 230055

info@thurstanhoskin.co.uk
www.thurstanhoskin.co.uk

Open in Hayle Monday & Thursday
9am-5.15pm or by appointment.
We are also in Redruth & St Agnes

JAKE'SMOBILE
PHONE REPAIRS

01736 757233

07873 799 930

Lions were proud to be able to add further equipment for Hayle CC as the club continues to develop its ever expanding children's cricket facilities"

If anyone interested in getting involved or playing for Hayle CC Juniors to contact Tim Marrion on 07817 743633 or visit

www.haylecricketclub.co.uk for all up to date info on activities at the club.



Council Corner August & September 2019

New Councillor

In May Councillor Trevor Harding joined the council, representing South Ward. We welcome Trevor to the team and his co-option appointment means that we now have a full complement of members. His and all councillors' contact details are listed on the council's website page.

Hayle Town Council Declares a Climate Emergency

At its meeting held 4 July, the town council resolved that it:

Declares a climate emergency;

Pledges to work towards making Hayle carbon neutral by 2030;

Works with Cornwall Council to assist them with their declaration



The Mad Hatter

Bed and Breakfast Open all Year !
Rooms overlooking Copperhouse Pool.

Full English breakfast.

Competitive rates.

*Relax with a Scrumptious Cream
Tea or Homemade Cake in the
Café or Tea garden.*

Open 10am-4pm

Monday to Sunday.

Closed Tuesdays.

73 Fore St Hayle TR27 4DX
01736 754241 07871 165 381

www.cornwall-online.co.uk/madhatter

paulinemadhatterbandb@outlook.com

Dogs welcome

PROPERTY MAINTENANCE

Painting

Gardening

Fencing/Sheds.

Experienced and reliable

Competitive rates

Contact

Simon Wells

07709 926 595

01736 754408

simonwells1466@gmail.com



HYDRO BATH BLOW DRY
BRUSHING NAIL CARE
EAR/EYE CARE FLEA TREATMENT
DEODORIZE CLIPPING.
ALL NATURAL PRODUCTS.

PH 07903 042950

Lesley 01736 850971

E-mail lesleyandkeith@msn.com
City of Guilds Trained

to make Cornwall carbon neutral by 2030;

Acts as a voice for the community to lobby for action on climate change, raise the profile and share lessons with higher levels of government; **Continues** to work with the community of Hayle and its surrounding parishes to deliver this new goal through all relevant strategies and plans and

Assist the working group with the preparation of an action plan within six months to address this emergency

A group of councillors also volunteered to form a Climate Change Working Group and have already met a number of times to progress the action plan and they will soon be calling for the residents of Hayle and the surrounding areas to get involved. Watch this space!

Community Governance Review

Cornwall Council is undertaking a review of the parish boundaries, the number of seats and warding arrangements for local councils and their names for the whole of Cornwall. Hayle Town Council has reviewed its boundaries with neighbouring parishes and internal warding arrangements and has submitted a response to Cornwall Council for this first phase of the consultation process. The town council has

Des Button
Electrical Services & Supplies
Rewiring,
Fitting Consumer Units,
Sockets & Switches
Emergency callouts.
For Free Estimates & Friendly Advice
Call
01736
753211



proposed some changes for a small number of dwellings which would impact on the boundary between Gwinear-Gwithian Parish. No proposals have been submitted that would affect the boundary with St Erth Parish. For more information about the town council's submission please see the website or town council Facebook page. Cornwall Council will publish an overview of all submissions in early August and its panel will host a series of meetings throughout Cornwall, as the next phase of the process.

Multi-skilled Environment Officer

Hayle Town Council has entered into a Service Level Agreement with Cornwall Council for the provision of a multi-skilled environment officer in the town. The officer will be working flexibly including some early mornings, evenings and weekends. He is charged with enforcing parking, dog fouling, littering and dogs on beaches regulations throughout the town. This service is in addition to routine hours that Cornwall Council already provides to Hayle and was established to address the vast numbers of complaints by local residents.

Mayor's Annual Walk

The Mayor's sponsored walk will take place on Sunday 15 September 2019 with a choice of

PSD Studio

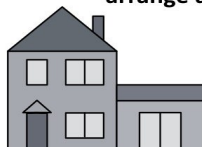
ARCHITECTURE • INTERIOR DESIGN

- Planning Applications •
- Building Regulations •
- Remodelling and refurbishment •
- All aspects of home improvements •

With over 30 years local experience in architecture and design you can be sure of the best possible service

- Free initial consultation •
- Detailed quotation provided •
- Clearly defined work stages •

Call to chat about your project or to arrange a home visit



01736 758474

07985 438348

info@paulscott.co.uk

Paul Scott Design, 22 Guildford Road, Hayle TR27 4PP
www.paulscott.co.uk - new website coming soon

ALEXANDER McDONALD

Gutter clearing and fascia board cleaning. Painting, pressure washing, gardening services and all those little jobs you keep putting off.

Free estimates.

Big enough to cope, but small enough to care!

Mob 07880 777 591

Home 01736 753102



Bespoke Picture Framing



Paintings,
Photographs
Textiles, Canvas
Cross-stitch, Memorabilia,
Conservation
Mobile Service offered
Tel: 07502 392 839
www.itsallintheframe.co.uk
gilly@itsallintheframe

Gilly Hooper
32 Chenhalls Road,
St Erth
TR27 6HJ.

a two or five mile route, so please keep a lookout for further information in the press and on the Council's notice boards. Sponsorship and registration forms are available from the town council office. The money raised this year will go towards Children's Hospice South West. We will also require help on the day so if you feel you could spare an afternoon to volunteer as a marshal please get in touch.

Hayle Civic Service and Parade

This year's event will take place on 6 October 2019 and as usual the Parade will meet and form in the Commercial Road Car Park from 2.30pm. Guests are invited to park in the car park and the Parade will process, led by Hayle Town Band, to St Elwyn's Church for the Civic Service, which starts at 3pm. Following the service, the parade will return to the Day Care Centre for refreshments.

Hayle Town Council
Hayle Community Centre
58 Queensway Hayle
TR27 4NX 01736 755005

townclerk@hayletowncouncil.net
www.hayletowncouncil.net

Office hours 9.30am – 12.30 p.m.

I have got nothing against people being spontaneous, I just think there is a time and place for it.

Transformations Cornwall

*Give your home a luxurious finish
Create the style you desire
Bespoke curtains, blinds and soft
furnishings.*

*Handmade to a high standard
Professional, friendly service*

Elizabeth Gregg
17 Penpol Road Hayle
TR27 4AD

01736 752434

elizabeth@transformationscornwall.co.uk

[www.facebook.com/
TransformationsCornwall](http://www.facebook.com/TransformationsCornwall)

THE CAST.....



Are putting the spotlight on entertainment. For 'One Night Only' The Cast are proud to bring you a variety show called 'Spotlight Revue'.

There will be songs to listen to, songs to join in with, mysterious magic, poetry, humour to (hopefully) laugh at, and Cornish storytelling, in fact something for everyone!

Make sure you have the venue, date and time noted in your diaries:

**Hayle Rugby Club,
Saturday August 17th at
7.30pm**

Tickets are £5 each (cash only please) and available from: Blewetts Toy Shop in Foundry, and Angove Sports in Copperhouse, Copperhouse.

Get away from your mobile, computer, iPad, tablet and TV and have a night out enjoying and supporting local entertainment. We have had great success with our Murder Mysteries and you never know when another murder might happen close to you so keep a close look out.

Dare we mention the 'C' word, yes Christmas! The Cast are preparing and will be performing a 'Christmas Variety Show' sometime nearer Christmas. Keep

**Dreckley's Waste
Collection
House Clearance &
Deliveries**

**No job too small
Garages, Houses, Sheds, &
Gardens cleared.**

**Fully registered & insured.
Honest reliable friendly
service.**

**Call Suzanne on 07877 325404
Email: dellamuro@btinternet.com**



PAUL SHERRIS

**Hayle's only
local family owned
FUNERAL
DIRECTOR
Private Chapel of Rest
Pre-Payment Plans
available
West Terrace, Hayle.
TR27 4JS.
01736 753969
Day or night**



PHILPS
FAMOUS PASTIES OF CORNWALL

Order our Famous Cornish Pasties online to be delivered to your door at www.philpspasties.co.uk

Hayle East Quay 01736 755661
Hayle Foundry Hill 01736 753302
Marazion 01736 710332
Praze-an-Beeble 01209 831360



The Big Pink Tree



Great Selection
of
Greeting Cards
Local Artist Work
Soaps, Candles,
Bath Bombs,
Gift Wrappings
Gifts for Her
Children's Gifts
and so much
more...

01736 757006

**Penpol Terrace,
Hayle
TR27 4BQ**

not just a Gift Shop!

a look out for that too but more information will be provided in the next 'Pump' edition. Pantos are not just for Christmas, so our exciting 2020 Panto will be performed at Easter. Regarding the Panto, there will be plenty of information provided nearer the time.

The Cast is a fast-growing group of enthusiastic people, from all walks of life, who enjoy being involved with providing and bringing the theatrical experience to everyone.

We can bring that theatrical experience to your area! If you have a venue and feel your area is lacking entertainment and something 'real' then contact us.

There are lots of plans in the pipeline so why not come and join us?

Come and be part of a great new adventure. We are a truly supportive troupe with a fully qualified 'performing arts' teacher providing 'in house' coaching if you feel you need it. You are welcome to attend one of our 'open evenings and 'taster workshops' which will give you a flavour of what we do and what we are aiming for as a group. Contact us on 07870 505355 and leave a message or text and we will get straight back to you. Sincere thanks go out to Hayle Rugby Club for providing the venue, Blewetts Toy Shop and Angove Sports for 'box office'

facilities. Without their valuable support it would not be possible to bring you local entertainment. In the meantime, always keep a look out for posters notifying you of what we are up to next

Getting Older by Barry

I am a Seenager. (Senior teenager) I have everything that I wanted as a teenager, only 60 years later. I don't have to go to school or work. I get an allowance every month. I have my own pad. I don't have a curfew. I have a driver's licence and my own car. The people I hang around with are not scared of getting pregnant. And I don't have acne. Life is great. I have more friends I should send this to, but right now I can't remember their names.

T	Come to	O
BLEWETTS TOY SHOP		
19 Penpol Terrace, Hayle TR27 4BQ		
Y	01736 753012	S

WEST CORNWALL MOBILE FOOT CLINIC

For the professional treatment
of:

Corns & Callus Diabetics
Verrucas Athletes Foot
Thickened Nails
Fungal Infections
Ingrowing Toe
Nails
Cut-trim Nails



All in the
comfort of your own home

Peter Williams
S.A.C.Dip FHPT/FHPP
07901 803493

Evening & weekend calls
available.

pwpetewilliams@googlemail.com

Send Flowers Today
from your Local Florist

**Flowertime @
The Big Pink Tree**
01736 757006
www.wesendflowers.co.uk



Piano Lessons in Hayle

Peter Luing, Musical Director at Kidz R Us, St. Ives Parish Church and Culdrose Military

Wives has some vacancies for piano lessons on a newly-restored Bechstein 7-foot grand or, for those of a nervous disposition, a Zimmerman upright. He also offers organ, theory and singing lessons. Teaching takes place in his detached comfortable studio at Gwel Trencrom, Hayle.

(The credentials bit: GRSM, LRAM, ALCM, PGCE, DPSE, graduate of the Royal Academy of Music, formerly Head of Music at Hayle Community College, Mounts Bay School and lecturer at Truro College and Exeter University @ Falmouth)

For a free consultation please ring 01736 754225 or email pluing@tiscali.co.uk for an appointment to discuss your needs. Age range eligible: 5 to 105. References from current pupils can be supplied.



Millpond Update

In my previous update I referred to our ducklings and the single survivor of the six that were hatched. I am happy to report that that Itsy, as it has become known, has not only survived, but has become a cheeky little character which is growing well and has now gone through two fledging moults. We had hoped for a few more but we probably have to wait now until the Copperhouse Canal ducklings return to the ponds in September.

Now that the breeding season is over the drakes are already drifting back to rest, and enjoying their corn feeds to keep them in good health while they moult. We have gone from our fifteen summer regulars to almost forty birds. We can have over 100 birds during the winter which include some feral mallards passing through.

The work on the Rope Walk is now finished and the scaffolding has gone. The walls look much improved and the builders should be congratulated on a job well



Fully Managed Property Letting Service.

We can advise on landlord's responsibilities such as: Energy Performance Certificates, Electrical Safety, Gas Safety Certificates, Landlords insurance.

We will set market rental, find tenants, obtain references and much more.

Call Derek Penny or Chris on
01736 755077

**20 Fore Street, Copperhouse,
Hayle, Cornwall. TR27 4DY**
email: camprops@btconnect.com

done. The Rope Walk is to be officially re-opened to the public by English Heritage. It is now hoped that the state of the Rope Walk will also undergo improvement to reinstate the understory of the woodland to restore the site's iconic status. The Rope Walk always unified the site's history, ecology and environment from the time it was opened to the public in 1989. Recent work carried out by English Heritage has reduced the ecological element of the woodland and this really needs to be restored, if possible.

Please can you also help the turtles to find a new basking log. They would really appreciate it!

Georgina Schofield
Volunteer Wildlife Warden

HAYLE FILM CLUB

Our Summer programme ended on the 25th of July and our Autumn season will start on Saturday, 14th September.

Your committee will be meeting soon to select six films from an excellent offering of 16 from our distributor Moviola. As usual, we will try to have something for everyone: from box office hits to award winning



48 Penpol Terrace Hayle TR27 4BQ

The Oldest Chippy in Hayle!

Opening hours

Lunch time:

Wed—Sat 12pm-2pm

Evening:

Mon—Sun 4.45pm-8pm

We have a 5* Hygiene rating

See us on  @Lewy's Fish & Chips
or phone

01736 759381

foreign films.

Our highest audience rating, a perfect score, came from a subtitled Japanese film (Like Father, Like Son) back in 2015. So do try something new, you may discover a gem.

There is nothing like enjoying a film with others, and, on Saturdays, we provide tea, coffee and home baked goods after the film – a perfect opportunity to discuss what you have just seen.

Join our mailing list to get all the latest information. Just go to <http://haylefilmclub.org.uk/contact> and fill in the form.

See you in September.

Heyl St Piran Singers



A thoroughly enjoyable night's entertainment was had by all who attended the joint concert between Heyl St Piran Singers (HSPS) and their German guest choir, the Chor de Kreis Sang Envereinigung Solingen, at St Elwyn's Church on Wednesday 12th June.

An extensive and varied programme of music was performed by both choirs under

the direction of Mr. Martin Davies (Heyl) and Herr Willi Winkler (CdSES).

The concert was put on in support of the Hayle Day Care Centre, and £651 (plus 5 euros!) was raised.

Some of the money was raised through an excellent raffle, with many prizes donated by local shops and businesses.

Thanks go to Lucy Kemp (jeweller), Asda, The White Hart Hotel, Cornubia Inn, Paula Batchelor (silversmith), The Cornish Arms, Paradise Park, Wyevale Garden Centre, Hampson's Butchers,

WONDERFUL WILDLIFE AND INDOOR PLAY AT PARADISE PARK!

Award-winning wildlife sanctuary with rare birds, penguins, farmyard friends and fantastic JungleBarn play.

Return
Tickets
£3.99
Perfect
for locals



26th July
to 3rd Sep

SUMMER FUN...

Great daily
timetable of events

PARROT SPECIALS
FEEDING & FLYING
EVENTS

NEW
+
WILDLIFE HERO
QUIZ

FEED
THE
PARROTS



Paradise Park, Trelissick Road, Hayle

Open every day at 10am · Infoline: 01736 751020 · www.paradisepark.org.uk

And pop
into the pub...

Real ales
Sky Sport

BIRD IN HAND
FAMILY PUB & BREWERY AT PARADISE PARK



Live Music
Snooker Room

Great Food from chef Steven Jackson

Mr B's Ice-cream,
 Lily Rose,
 Copperhouse Jewellers,
 Copperhouse Post Office,
 Dune,
 Blewetts Toy Shop
 Hayle Emporium and also to
 many individuals for their
 donations. A special thanks goes
 to St Elwyn's Church who kindly
 agreed to waive their fee for the
 charity event. A further joint
 concert at All Saints Church,
 Falmouth is being planned by
 HSPS for 3rd August, when they
 will be joined by Trevervah Choir
 (from Falmouth). All are welcome
 to come along at 7.30 p.m. when
 again the funds raised will be
 divided between the two choirs
 and donated to local charities of
 their choice. Please join us!



Lustys Vape Shack

Adam and Sara have been
 owning and operating Vaping
 Stores for the last four years. This
 was started with their first store in
 Helston, followed by a second
 store in St Ives and now, finally,
 their third store in Hayle on
 Penpol Terrace.

YOUR OLD TAPES ONTO CD



**YOUR OLD CASSETTE, REEL TO
 REEL TAPES OR
 33/45/78 RPM RECORDS ALL
 SAFELY TRANSFERRED ONTO CD**

**Your precious memories saved
 forever. Your own photos, information
 & dedications can be included on the
 CD/DVD cover.**

**Also now: old VHS video tapes &
 photos all onto DVD.**

**Digital Recording for Singers &
 Musicians, Songwriters, Poets,
 Story Tellers, etc.**

**Also Musical Backing Tracks
 provided.**

Contact Steve Nunn. 01209 719 481

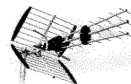
www.cornmillstudio.co.uk

Email: cornmillstudio@aol.com

ALL AERIALS

TV Aerial & Satellite TV Specialists.

digital



**Registered Digital
 Installer**

25 Years Experience

**For all aspects of Tv Aerials,
 Satellite Systems Fixed &
 Motorised, Installations &
 Repairs**

**Free Friendly Expert Advice By
 Local Engineer.**

Tel : 01736 759225

Mobile : 07979503907

Email. jonathan@allaerials.co.uk

L & M TAXIS HAYLE

1-8 Seaters Available

Competitive Prices

Friendly and Reliable Service

Female Drivers Available

Short & Long Distance

Contract Work Undertaken

01736 339292

www.lmtaxishayle.co.uk



Café Riviere

Across Hayle's Jubilee Bridge

**Serving a variety of hot
food, late breakfasts,
drinks, ice-cream, cream
teas and snacks.**

- *Indoor and outdoor seating.*
- *Take-away is available.*
- *Open all year.*
- *Next to the public open-air swim pool, sub-tropical gardens, promenade and nature reserve.*

They are very excited to be an addition to the other local businesses on the street and look forward to meeting customers, both new and old, through the door in the new premises.

The address of the new store is: Lustys Vape Shack, 27a Penpol Terrace, Hayle, TR27 4BQ.

HAYLE AND DISTRICT BOWLING CLUB

Hayle & District Bowls club Women's Team is unable to complete their fixture list for this season due to a lack of women players at the club. This a wonderful opportunity to learn the game of bowls during the summer, in preparation for next season. The Men's team is also in need of players of any standard. We would welcome anyone aged 15+ who would be interested in the game of Bowls. Coaching can be given. All you

BIZ AND BYTES

07974 647524 01736 755971

If you require computer assistance, either training or to resolve a problem then give us a call. Visits arranged to suit you.

Looking after the home user and small business.

**WEBSITES • BROADBAND • TRAINING •
COMPUTER SUPPLY • TYPING**



www.bizandbytes.co.uk
enquiries@bizandbytes.co.uk



need is a pair of flat shoes/trainers and enthusiasm! If you have not played before then there will be no subscription for the first year. Women's competitions are played in the afternoons during the summer months against teams from the local area, followed by tea in the clubhouse afterwards. Men's competitions are held between 6.15 pm and 8.30pm. At Hayle we bowl on a Proweave bowling surface on a full-size outdoor green which can be used all year round. Our teams play outdoor in all the local leagues and the Bowls Cornwall League. Short Mat bowls is played in the clubhouse during the winter months entering all the local leagues. Bowls is a very friendly, competitive game, it provides friendship, social opportunities, combined with skill and gentle exercise for all ages. Come along and join us! You will be made very welcome and may enjoy it!

Contacts: Dave 01736 753811,
Kath 01736 753346

Have you seen the large flock of



Mediterranean Gulls using Copperhouse Pool as a roost when the tide is out? Handsome birds, slender and with a black

Colin Best
Best Southern Interiors
Est. Since 1981



Painter & Decorator
Hayle



07799 692917
colin.f.best@gmail.com
Queensway Gardens, Hayle, TR27 4FP

head.

There are few swallows and swifts winging over the water this year. It is feared many were lost in terrible storms in Africa, as they journeyed north in the spring. I saw a large grey heron paddling in the pool, then flying away on my approach. Still plenty of egrets fossicking in



**Pre-Loved
Surf Shop**

Unit 20. The Old Foundry Chapel,
Chapel Terrace,
Hayle
TR27 4AB

- Cornwall's largest specialist stock of pre-loved wetsuits
- Pre-loved Surfboards, Mini Mals, Longboards
- Longboard skateboards
- Surf hardware



Open Monday,
Tuesday,
Thursday and
Friday 12-5.
Saturday 10-4

Tel: 07955399831

the mud, and a family of shelducks.

An American Royal Gull was seen briefly in the area, and oyster catchers and Canada geese have raised young.

So, lots of bird life to watch out for as you pass the estuary, the pool, or Ryan's Field.

During hot weather, put a bird bath in your garden if you can.

The birds will appreciate a pit stop, for a drink and a bath.

There is always room for more volunteers with RSPB.

Interested?

Ring the office in Penzance on **01736 360624** to find out more.

'Til next time.

Tina Morgan

Hayle & St. Ives Stroke Community Café

The Stroke Community Café is delivered by the Stroke Association. It is a meeting place for people affected and at risk of stroke. It is an opportunity to socialise, meet others, discuss experiences and gain support in an open and friendly community setting.

We meet on the second Tuesday of the month (next meeting Tuesday 6th August) from 10am to 12 noon at Wyevale Garden Centre Cafe, Nut Lane, Hayle TR27 6LG.



Webb & Philp Ltd
electrical contractors



17th edition
BS7671

**All aspects of Electrical
work undertaken**

Free Estimates. No Job Too Small.

Prompt. Reliable. Fully Qualified. Est 1972

- ✓ Re-Wires
- ✓ Security
- ✓ Showers
- ✓ New Build
- ✓ Testing
- ✓ Maintenance
- ✓ PAT Testing
- ✓ Extra Sockets & Lights

www.webbandphilp.co.uk

Tel/fax 01736 753651 Mobile: 07419 376882

Email: electricians@webbandphilpltd.co.uk

For further information please contact Simon Eastment, email: simon.eastment@stroke.org.uk
mobile: 07703318825

Helpline 0303 3033 100
Textphone
18001 0303 3033 100
Rebuilding lives after stroke

Hello from Hayle Library

If your child hasn't already joined the Summer Reading Challenge please do come along and sign them up to the free reading incentive we have going on through the summer holidays. They are to read at least 6 books throughout the summer, collecting incentives along the way, and receiving a medal and certificate at the end. Those that complete the challenge will go into a prize draw. The challenge finishes on September 7th so plenty of time to take part.

On Fridays we have a **Storytime** session for children aged 3-9 from 3.45pm for an hour. Jane reads stories and does arts and crafts with the children. So, come along, its great fun. Every other Friday we do **Lego club** instead: Under 4s need to be closely supervised by their carers. We have a whole list of **special Storytime** events over the summer that link into the



Lawrence Butcher Chimney Sweep

Brush n Vac, Cowls fitted,
Camera Inspections, Solid Fuel
Servicing & Repairs. Carbon
Monoxide Alarms fitted

Enfield Farm, 30 Hayle Rd ,
Fraddam, Hayle TR27 6EH

01736 850033

07966 547829

loloubutcher@aol.com

BUSH MONKEY

GARDEN SERVICES

Keep it simple Keep it local !
Over 25 years experience with that
personal touch.

Qualified and fully insured
Lawn care

Planting schemes

Weed & insect control

Tree hedge & shrub pruning

Garden maintenance & design

Decking Patios

Pressure washing Call Anthony for free
no obligation quote or advice.

07825 881 078

bushmonkeygardenservices@yahoo.co.uk

summer reading challenge. Please pick up a flyer from the library. On **Monday August 5th** we have a special creative storytelling event from 2-4pm which will include making a **Moon painting Mural, Alien masks, Moon Dough and Erupting Moon rocks**. We are also currently looking for **storytime volunteers** to cover Jane when she is on leave, so if you are interested please do pop in and have a word with Jane or Emma.

Who Dares works are back in the library doing their sessions every other Monday from June 10th between 2 & 4pm. Pop along to find out how they can help you to connect with training, education and work.

Stonham have a free drop-in

session every Monday from 3-5pm for housing advice, preventing homelessness, claiming benefits, home choice applications, maintaining a tenancy, budgeting skills, contacting local councils, housing associations and more. We would really like to help any **housebound people** out there that love reading but can't access the library themselves. So please, if you know anyone who is housebound or struggles, we have a great team of volunteers who can choose and deliver books to people once a month for free! Either ring 0300 1234 111 and ask to be put through to us or e-mail the team at

hayle.library@cornwall.gov.uk.

We also have some information in the library for people with sight loss. For example, British Wireless for the Blind and Isight Cornwall. We are hosting '**Action on hearing loss**' sessions on the first Monday of the month between the hours of 10am-12pm. You will be able to have a basic hearing test, given advice on hearing equipment, and what support there is in your local area.

We have a **computer volunteer** in our library on a **Monday from 2-5pm**. Jeff is happy to help with various computer issues for example, setting up an e-mail, job search, online applications, scanning & emailing, accessing Borrowbox, and more. Pop in to make an appointment.

We have 5 public computers for

our customers and visitors to use. For customers that can't use a **computer**, we run **free classes** when we are closed for absolute beginners. The classes run over a 4-week period for 2 hrs at a time, so if you could benefit from these classes please talk to one of the team.

We have a good selection of books, DVDs and talking books for you to borrow. It's free to join: Just bring a proof of address with you.

We also have great **online resources** available to our customers, like **Borrowbox**, where you can borrow e-books and e-audio books. We have a great online language site called 'Transparent language online'.

Additionally, '**Press reader**' has lots of **newspapers** and **magazines** to choose from.

We are open on Mondays, Wednesdays & Fridays from 9.30am-5pm and Saturdays from 9.30am-12.30pm.

The team look forward to seeing you very soon.



MOUNTAIN - ROAD - BMX SPECIALIST

Bicycle Sales and Repairs

Tel: 01736 753825

36 Penpol Terrace, Hayle TR27 4BQ
www.haylecycles.com

PLANTECH

THE FRIENDLY RELIABLE SERVICE

Lawns cut and borders weeded.

Hedges trimmed.

Gardens cleared.

Gravel, sand, topsoil delivered and laid.

Free no obligation quotes.

01736 754401

0797 9546434



PLANT CARE AND BORDER MAINTENANCE

Border Design, Container Displays,

Planting, Pruning, Weeding,

Lawn Care, Hedge Trimming

LISA JAKEMAN

RHS QUALIFIED GARDENER

LEEDSTOWN, HAYLE

01736 851060

0777 3438 777

shearsgardeners@gmail.com

www.shearsgardeners.wix.com/hayle



COAST 2 COAST KARTING.CO.UK



Hayle Friends Group CHSW would like to say a very big **THANK YOU** to Tracey and Keith at Coast to Coast Karting at St Erth for the wonderful charity day they held supporting Little

Harbour. The visitors at Coast to Coast enjoyed an exciting day and contributed to the amount Tracey and Keith were able to give CHSW.

A cheque for £1,000 was presented to the Hayle Friends Group. This will help immensely with the care and support given to sick children and their families who come to Little Harbour. Since 2007 donations from supporters have raised £263,526, so a huge Thank You to you all.

If you would like to learn more about CHSW LITTLE HARBOUR contact the office: St Austell 01726 871800.

HAYLE FRIENDS CHSW invite you to a fashion show at **CARBIS BAY MEMORIAL HALL** at 7.30pm on **20TH SEPTEMBER 2019**. Tickets £5 each to include tea/coffee and cake. There will also be a raffle. All the items modelled can be purchased on the night, plus

**DAVE
THOMSON
DECORATING
INTERIOR &
EXTERIOR.
FREE QUOTATIONS
TEL 07518 136 730
01736 754647
Dave.thomson2013
@hotmail.co.com**


extra from the rails including accessories. All the items will be supplied from the Penzance CHSW charity shop.

Tickets can be purchased from CHSW Shop Penzance or call Mary 01736 754342

Pastor Brian takes a trip

It seemed like a good idea, if somewhat ambitious, to challenge myself to attempt the final 115 kilometres of the world-famous way of St James Pilgrimage (the Camino de Santiago) as a means of celebrating my eightieth birthday. So, I made the arrangements and did a certain amount of training to ensure that I could still walk many miles each day and still complete this particular journey in six days. Great in theory, I told myself; For had I not, at eighteen, in the company of my fellow Lockwood Methodist Church Youth Club members often walked in excess of 25 miles on a Saturday hike? I was to discover that there is a difference between being eighteen and eighty!

The first day I set out with much enthusiasm and energy but halfway in the day's total journey



Move that
Body to
Music

Classes for 60s Plus

Passmore Edwards Hayle
Thur 10-11am
and on
Mondays 10-11am
Senior Circuits
St Ives Library
Mon 2- 3pm
Wesley Rock Heamoor
Wed 10-11am

£5.00 a session
Phone Sylvia on
01736 757560 for more info

MA

Mandy Adams

☾

PREGNANCY YOGA
Tuesdays 6.00-7.30 pm

☾

WELL WOMAN YOGA
Tuesdays 8.00-9.30pm

at the
PASSMORE EDWARDS INSTITUTE
in Hayle

MANDY ADAMS - 07952 836190
WWW.MANDYADAMS.CO.UK

TJ's Barber Shop

**2 Market Square,
Copperhouse, Hayle.**

Opening hours

Tue 9-5pm

Wed 9-6pm

Thur 9-5pm

Fri 9-5pm

Sat 9-4pm

Over 20 years experience in
Modern & traditional Barbering.
No appointment required.

Tel 01736 757000

The Ladies Room

@

TJ's Barber Shop

**2 Market Square,
Copperhouse, Hayle**

**Ladies Cuts from only
£10.00.**

Just walk in, appointments not
always required. All aspects of
hairdressing available.

Tel 01736 757000

I suddenly found myself in a somewhat untidy mess on the ground and being unable to get myself upright once more, even when lacerating my arms in the many attempts at trying to stand. What came to my rescue was a modern, somewhat unorthodox, example of *Medecins Sans Frontieres*.

First a Korean Student helped me up and propped me against a tree and, refusing to use my First Aid Kit, used his own sterile wipes and then many plasters along with insisting that I shared his high Energy Drink. This was followed by two nurses from Paris, who with copious amounts of *Micropore*, ensured that the plasters were going to stay in place. They left me having my lunch and an assurance from me that I would rest a while before going any further, and I was true to my word.

When I felt much better (I should add that the temperature was in the high twenties) I resumed my walk only to find that after a couple of kilometres I was back on the ground utterly helpless to get back up. This time it was two South African mums who came to my aid plying me with chocolate and other goodies to get my energy levels up. They then debated whether to take me back to the last major place we had passed through and there get a

taxi for me to take me to the place I was due to stay that evening. At this stage a couple of Italian cyclists stopped to enquire if they might help. It was agreed that they would go ahead, believing that the main road which we had to cross was less than 800 metres away and they would hail a taxi for me there. Very gingerly, with one of my South African angels linking me on one side, whilst the other steadied me from behind, eventually we made the road and saw there a taxi waiting. I have never been so grateful to see such a welcoming sight. It seemed to me that I had witnessed a modern version of the Parable of the Good Samaritan.

Later in my room at the hotel I was to stay for that evening I reflected both on my good fortune and my embarrassment as to what had happened. I wanted to take nothing away from the outstretched arms that had comforted and sustained me but to say I was angry is no understatement at the feeling that I had; not only let myself down but all those generous folk who had sponsored me and ALL WE CAN which I was hoping to raise monies for. I judged that it would be irresponsible to attempt on the second day the full length and so got a taxi to take me to the half-way point from where I walked to the next overnight stay. To qualify



The Old Foundry
 Chapel, Hayle
 01736 755543
 www.ula.online
 Open 9:30 - 5
 Mon - Sat

Clothing & Gifts
Sustainable &
Local Makers
#Support Local

ula
 CLOTHING & LIFESTYLE

Copperhouse Jewellers
 & Engravers

JEWELLERY REPAIRS
SECONDHAND GOLD BOUGHT
AND SOLD
WATCH BATTERIES £5 FITTED!
TROPHIES & MEDALS
ON SITE ENGRAVING

NOW OFFERING KEY CUTTING
CUT WHILE YOU WAIT FROM
£3.50

61 Fore Street, Hayle
TR27 4DX
-01736 753203-



Yoga in Hayle

HATHA YOGA CLASSES
at the Passmore Edwards Institute

MONDAYS AT 7PM
TUESDAYS AT 9:30AM
THURSDAYS AT 6:30PM
FRIDAYS AT 9:30AM

Suitable for beginners and equipment
provided

yogainhayle.com
07815945695 / 01736 791784

JOHN POLLARD

Cornwall Councillor
Hayle North

To contact me:

[john.pollard@](mailto:john.pollard@cornwallcouncillors.org.uk)

cornwallcouncillors.org.uk

07967272808

Cornwall Council:
0300 1234 100



for a certificate once you have reached Santiago de Compostela you have a card which you need to get stamped as you journey along the way. I had the necessary number of stamps but felt that I could not ask for a certificate.

I recall what one person said to me, who I talked with for quite a while on the first day, and who then walked on ahead being at least a third of my age! We met up later and she was delighted that I was still walking. I confessed to her that, occasionally on the longer days, of taking a taxi to reduce the journey. She responded, 'Remember Brian, you are not the one who does the Comilo, it's the Camilo that does you'. I reflected on that, on and off, for the rest of the pilgrimage and realised just how right she was. If you do not come back a different person as a result of both finding a new closeness to both God and yourself, then the whole exercise would have been wasted. I want to claim that I did, after the initial disappointment, personally fulfil the spiritual objective of my expectations.

Whatever pilgrimage you are on do enjoy the journey and both God' and your own company.

Brian Thornton

AMNESTY INTERNATIONAL



QUIZ NIGHT

Phillack Church Hall

10th August

14th September

at 7.15pm Teams of up to 6.

£3 per person. Prizes, Raffle,

Tea coffee or bring your own.

Contact Graham

07974 000747



HAYLE DAY CARE CENTRE Commercial Road, Hayle

An affordable day care facility for the elderly of Hayle, St Ives and district

Transport • Freshly cooked meals

Also includes bathing and hairdressing
Therapy and lively social interaction

Always a friendly welcome

Call 01736 755000

JC ELECTRICAL

Your complete 24 hour Electrical Service

**Rewires • New Build • Lighting •
Showers • Extra Sockets • Heating**

City & Guilds Qualified (Tests to BS7671)

Part P registered

Prompt and reliable friendly service

Free estimates and all work guaranteed

Office: 01736 754543

Mobile: 07739 577549



CORE YOGA/PILATES CLASSES

LELANT VILLAGE HALL

- * Core Yoga—7.45am *Mon & Friday*
- * Pilates — 9.30 Intermediate
- * 11am Beginners *Monday*
- * Pilates — 6pm Intermediate &
- * 7.30pm Beginners *Tuesday*
- * Fitness Pilates - 9.30 *Friday*

NEW CLASSES NEW STUDIO— CARNHELL GREEN

Core Yoga for Beginners *Mon* 6pm
Wednesday 12—1pm
Sunday 10am

Phone Kim 07751 552 313



NAWT is a dedicated animal rescue and rehoming centre based at Wheal Alfred. and is open 11am – 7pm every day. The charity shop in Foundry Square, next to the launderette, always welcomes articles for sale, with the revenue raised helping the Centre to care for the animals.

Visit our website:

<https://www.nawt.org.uk/centres/cornwall>

Follow us on Facebook for updates on animals looking for homes. 01736 756005

ANGOVE SPORTS COPPERHOUSE, HAYLE.

Tel(01736) 752238.

For all sports equipment,
clothing, footwear
and fishing tackle.
Rackets repaired
and restrung.



Hayle Old Cornwall

Society president, Mr Trevor Smitherham suggested that Hayle should have a blue plaque erected at Rick Rescorla's birthplace. The plaque was made by Attic Design and Print based at North Quay Hayle. It has now been fitted on the gate post on

ZIP INN

**Repairs & Alterations:
Soft Furnishings: Loose
Covers**

Pat 0797 973 0738

Hayle



Penpol Terrace, directly opposite his memorial stone on harbour-side. "I thank Trevor and the Hayle OCS for the idea, fitting and covering the cost of this most welcome tribute to Hayle's 9/11 hero".

*Mervyn Sullivan
Rick's lifelong
friend*

I've just tried to buy tickets for an Elvis tribute act. It was a right nightmare-I had to press one for the money, two for the show...

Letters to the Editor

We always look forward to receiving our copy of the Hayle Pump newsletter and when we read 'Heyl Seizure!' by Roy Phillips we loved it.



Specialist Building Surveyors

Asbestos Surveys
Buildings Surveys
Damp Diagnosis
Fire Risk Assessments
Timber Decay
Mundic Testing

Craig J Shepherd

BSc(hons) Building Surveying, CSRT

01736 752012

07890 528 312

info@cjshepherd.com

www.cjshepherd.com

Cabinetmakers & Joiners

**JOHN
ANDREWS**

Windows, Doors & Staircases
constructed in soft wood and
hardwood.

Entrance gates

Fitted Furniture.

Restoration & repair work
including Boxframe windows.

Sash cords. Free estimates .

email:

johnandrews123@btinternet.com

www.johnandrewsjoinery.co.uk

Mob 07765 341616

tel 01736 755423

We totally agreed with him, as over the years, we have visited Hayle we have noticed subtle changes ourselves, not always for the good. We managed to get copies of his books 'The Saffron Eaters' and the 'Horn of Strangers' and have read both of them. What wonderful stories, all about life in Cornwall. I would thoroughly recommend them, although you may have to get them second-hand (my local Bookshop got them for me).

Progress is only real progress when the natural world is considered, and this should always be considered before changes are made. If there were a lot more people like Roy Phillips, the world would be a better place. We look forward to our next visit to Hayle, whenever that will be.

Bob & Ellie Taylor.

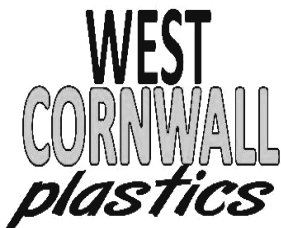


* GRP FLAT ROOFING * TILING
* SLATING * REPAIRS * NEW ROOFS

Tel 01736 758458
Mob 07909 943 098

Dear Sir

I was walking with the aid of my white stick, towards the Post Office. Outside the Jewellers waiting for the bus were four ladies with two trolleys and a number of shopping bags, deep in conversation and taking up most of the pavement. As I approached, I felt sure that one or more of them would move slightly to allow me a gap



We are delighted to announce our recent award of the Which Trusted Trader Scheme. We have been inspected by Which magazine and Ultraframe, the leading manufacturer of conservatory roof solutions, and passed with flying colours.

As well as carrying a wide range of PVC building products in our warehouse, our installation teams carry out work to the highest standard, giving you the peace of mind that comes with using a Which Trusted Trader.

I would like to thank the readers of Hayle Pump magazine for their continued support, as we serve the people of Hayle and beyond with the best PVC and Aluminum building products

Thank you
Nick and the WCPL team

INFO@WCPL.CO.UK
01736 759444
@WestCornwallPlastics



*West*COAT

CERTASS

Approved Service

Which?
Trusted traders

Official Ultra Installer



- QUALITY SERVICE
- QUALITY INSTALLATION
- QUALITY PRODUCTS

**COMPUTER/IT SUPPORT OR
ADVICE?**

Call Stephen Murley

Reasonable rates. Hayle Area
only.



07826 500284

through which to pass. But no, two of them looked at me, turned their backs and carried on talking. I just stood there for a moment wondering what was going on.

Approaching us from the direction of the Post Office was a teenage boy, probably 15 or 16, dressed in a hoodie with the hood pulled up to disguise his appearance and, no doubt, on his way to do a break-in or mug some old granny.

He walked up the slope and held out a hand to me saying "Come this way, I'll see you round". He guided me to the other side of the obstruction safely and said "You're safe now, take care, Sir". I thanked him and said that it was nice that some people showed kindness and consideration to others. The four 'ladies' as one, turned up their noses and turned away.

Please don't ever tell me that our young people are all bad.

Thank you.

*Kind regards
Nick Allum*

Country Skittles

- Food
- Skittles
- Games
- Bar

**WE'RE ON
THE APP
STORES!**



just search for
Country Skittles!



OPENING TIMES

SCHOOL & BANK HOLIDAYS:

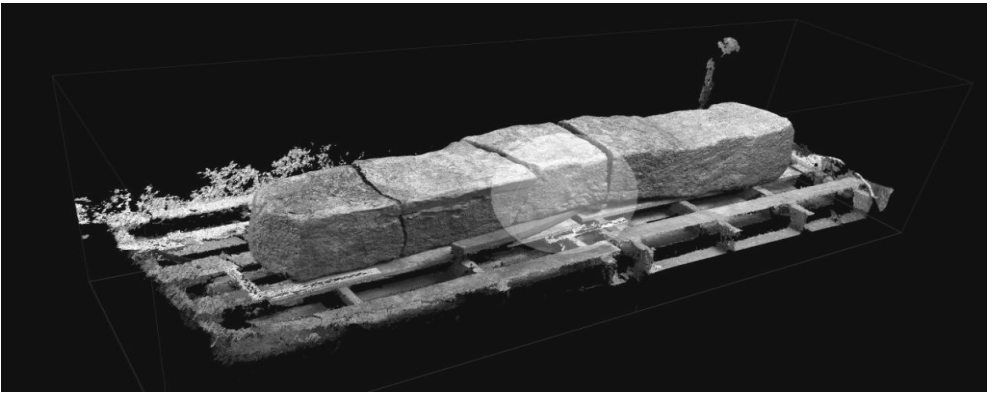
Mon to Sat 12-11pm Sun 12-10.30pm

ALL OTHER TIMES: Mon to Fri 6-11pm
Sat 12-11pm Sun 12-10.30pm

Townshend • Hayle • TR27 6ER

01736 850209

www.countryskittles.com



Remembering Cunaide

At some point in the 5th century there was an individual of such high-status, so respected and well thought of, that when they sadly

passed away, the normal burial or cremation with little structure to it, such as a mound of earth, was not going to suffice.

Cunaide was an individual of such status to those locally inhabiting the Carnsew area of Hayle that they desired to make a more



Our practitioners are all highly qualified, covering chiropractic, chiropody/podiatry, sports massage, acupuncture, rehabilitation, aromatherapy massage, reflexology and yoga.

Foundry Square, Hayle, Cornwall
www.cornwallclinic.co.uk

Call today...
01736 759088



significant effort to show their regards to this respected person. The only solution was to create a structured stone grave and marker that would not only stand the test of time but also require considerable effort to source and transport to the intended resting place for Cunaide. Granite was chosen, for it was plentiful in Cornwall and hardy to the elements of nature. Despite its abundance across the county, it's not quite readily available, thus it was sourced for Cunaide from miles away, possibly Ludgvan or Tren crom. Those tasked with acquiring this granite were quite possibly taken aback in these new Christian times in the 5th century by the stone they acquired, for at one end (which was used as the top) was a natural vein of tourmaline and quartz which resembled a cross. Undoubtedly great effort and expense was spent moving it to its destination within the visually dominating structure of a former iron-age fort on a hill at Carnsew, with its commanding views over the estuary and bay. Erected within one of the ramparts of the former iron-age fort, of which in the 5th century was likely still of significant controlling strength over the area by way of post-Roman influence (a hoard of roman coins was found buried nearby in 1825), sweat and energy were expended to create an arched stoned structure about one foot beneath the ground that entombed the

 Sales

 Hire

 Service

HSC

Mobility

Serving the South West



Tel: 01736
755 927

Mobility House, Unit 16, Marsh Lane Industrial Park, Hayle, Cornwall, TR27 5JR



Opening Hours: Mon - Fri, 9am - 5pm



abode

Property Agents

We deliver a fresh, passionate and personal approach to selling your property.

Why not contact us for a free market appraisal?

01736 756681

abodepropertyagents.co.uk

cremated ashes of Cunaide within, along with the charcoal used in the ceremony. Having satisfied themselves that Cunaide was safely secured inside the tomb, the harder work began. Using the primitive but effective tools and skills of the 5th century, great muscle was expended to position at the western end of the grave the 6-foot-long, 1 foot wide extremely heavy granite stone that would effectively be Cunaide's tombstone. It's an achievement to move such a stone even a few feet, let along the distance it originally travelled to get to Carnsew. Yet after all that, they needed to stand it up on its end with its narrowing sharper



David N'jie
PAINTER & DECORATOR

07944 156995 01209 831397

dave.painter@hotmail.co.uk
Trethannas Cottage, Praze-an-Beeble
Camborne TR14 0LH



base shaft securing it within the ground. One more highly significant piece of work was performed on the tombstone, either before or after its erection, that of engraving the stone with words that would clearly state who this grave, of such grandeur appearance, and

**WEST CORNWALL
BACK CARE CLINIC**

**Don't let back pain ruin
your life!**

**The Theraflex Vertebral
Mobilizer gives effective
and long lasting back
pain relief and correc-
tion**

Linda Hurr B.Sc. Hons

01736 339845

07496717589



TP Wills & Probate.
Wills and Estate Planning Consultant.

**"Where there is a will there
is a way to protect your family"**

- * **WILLS * TRUSTS**
- * **ADVICE FOR SENIOR CITIZENS**
- * **POWER OF ATTORNEY**
- * **PROBATE ADVICE**
- * **CARE FEE PROTECTION**

Call Tim Poole
01736 758418 or
07900 323939



on which such considerable emotional effort had been spent, was erected in memory for. The person instructed with the task of engraving, dutifully performed their job on what was a highly difficult and unforgiving stone to work with. Their some 4-foot long engraving, primarily in Latin, told of Cunaide resting beneath, and their tender age of 33 years. With a job well done, Cunaide's tomb stood in reverence for undoubtedly many years until multiple centuries of change subsequently led to the tombstone falling over, and the grave itself covered beneath soil. There it laid, most likely totally forgotten about, until some 1,400 years later ...



disAbility
CORNWALL & ISLES OF SCILLY

INFORMATION & ADVICE LINE

☎ 01736 759500
☎ 07522 970336

Independent, Confidential and Free
Do you have a health condition, disability, or are you a carer?

Our professional, friendly advisers are here to help you

- ✓ Money & Welfare Entitlements
- ✓ Rights & Discrimination
- ✓ Health & Wellbeing
- ✓ Housing & Home Environment
- ✓ Independent Living & Equipment
- ✓ Social & Leisure Opportunities
- ✓ Training, Volunteering & Employment

Open Monday-Friday, 10am-3pm

TJ'S CARPETS LTD.



**New Showroom at Tolroy Garage,
58 Mellanear Road, Hayle TR27 6HF**

Come and see our wide selection of carpets & vinyls,
laminates and patterns

Our famous home selection service still available

Full range of flooring accessories

Call Now! 01736 757540 or 07976 608215

Free measuring & estimate service

“Before You Buy, Give Us A Try”

HARVEY

THE HOLIDAY COACH NEAR THE COAST



LARGE FULLY ENCLOSED GARDEN
TRAIN VIEWING DECK
SWINGS AND PLAYHOUSE
COVERED CYCLE STORE

WWW.RAILHOLIDAY.CO.UK
01503 230783

PASSMORE EDWARDS
INSTITUTE



MEETING ROOMS FOR HIRE

Hayle's Village Hall
has rooms for
meetings & activities
for 2 to 60+ people

For more information:
WWW.HAYLE-PEI.ORG.UK
bookings@hayle-pei.org.uk
Or call: 07895-601978

13-15 Hayle Terrace
Hayle, TR27 4BU
Charity Number 268429

You can discover what has happened to the Cunaide stone since its rediscovery in 1844 by visiting Hayle Heritage Centre, as the stone now forms part of their new Pre-History Exhibition. Here you can learn about the stone's modern-day analysis, revelations and its journey from the plantation. Please see the back page of this issue's pump for the centre's opening time information.

Passmore Edwards Institute Hayle's Village Hall.

The Institute has been serving the community since 1896 and provides rooms for groups to meet for community services. The trustees recently asked themselves: 'is there more we could do in the provision of facilities and services?' Our answer was: 'ask the community'. If you have any suggestions for how the Institute could improve its service to you or your group, please let us know. And, if you are over 18 and interested in becoming a trustee, you would be most welcome. We will provide any training and guidance you might need.

John Bennett, Treasurer.
treasurer@hayle-pei.org.uk,
01736 753184.

Passmore Edwards Institute, 13-15
Hayle Terrace, Hayle,
TR27 4BU.

Hayle Breezers Group

is a gentle exercise group for people with COPD or other long term condition such as Diabetes or Heart disease. They are in the



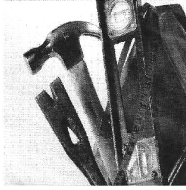
ASDA green token scheme and received a cheque for £200 from the Asda Foundation. See page 41 of the Pump for details of the group. *April Hogarth*



Hayle W.I pictured at their new flower bed on Penpol Terrace .

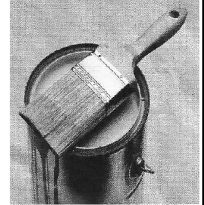
The theme this year is based around the harm that plastic is doing to the marine environment.

Home & Garden Maintenance



Painting & Decorating
Carpentry, Glazing,
Stained Glass
Shelving, Doors
General Repairs
Alterations Etc.

Appliances Installed
Furniture Assembly
Flooring, Fencing
Gates, Decking
Hedge Trimming
Pruning Etc.



Seymour & Jago

33 Commercial Rd,
Hayle TR27 4DE

Local & Experienced
No Job Too Small

07813 324880 - 01736 756821



From a dripping tap to a complete bathroom.
Free quotes and planning.
Emergency service, when you need us we are there.
Water industry approved.

Ph 01736 755170

Mob 07761 938 183

cliffords4@btinternet.com

or find us on Facebook at

***cliffords plumbing and
bathrooms***

Hidden Words Quiz. 146

Birds Sent in by J. Shepherd

*Hidden in the sentence is the name of a bird i.e. Sit **her on** that chair there—
answer is Heron*

1. I hope my son will do very well in his first job.
2. Most rich people are rather careful with their money.
3. Please Dennis nip every bug off those roses.
4. After their journey began, Netherlands was the first place at which they stopped.
5. Oh dear, three above par! Rotten luck.
6. Nowadays, some cake recipes use carob instead of chocolate.
7. If TJ's is fitting your carpet, rely on one thing, they'll do a proper job.
8. In St Michael's hospital the patients want for nothing.
9. A politician sometimes turns to Newsnight to find out what's happening in the world.
10. Winter nights can be so long and dreary.
11. If you come to this side of the auditorium, it's clear hearing the words is easier.
12. Oh for goodness sake, that door to the cellar keeps banging shut.
13. The other day, I saw a really good-looking fisherman in Newlyn.
14. When embarking on a course of exercise, start it slowly at first..
15. The spray-painted mural on this wall owes a lot to Banksy's influence.

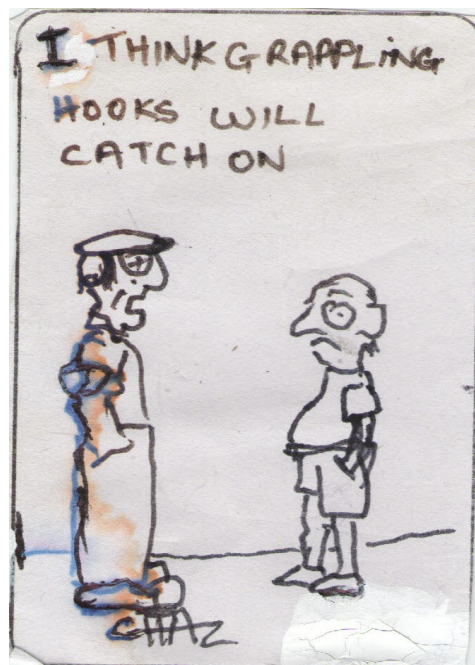
Thanks very much to J. Shepherd for this quiz. Would any other of our readers like to send in a hidden words quiz? It can be on any theme you like.

To win a prize voucher worth £20 to be spent with any of our advertisers, send your answers by **13 September** along with your contact details to editor@haylepump.org.uk or use any of our drop-off points on page 2.

Answers to Marine Environment Quiz 145

- | | | |
|-------------|--------------|-----------|
| 1. Cod | 2. Anemone | 3. Whale |
| 4. Dab/s | 5. Oyster | 6. Tuna |
| 7. Sprat | 8. Ray | 9. Huss |
| 10. Herring | 11. Bream | 12. Trout |
| 13. Sardine | 14. Mussel/s | 15. Clam |

The winner picked at random from the correct answers was J.Kersey (St Erth)



Club Listings

Bridge Club Every Monday at Carbis Bay Memorial Hall 2-5 pm. £2 inc. tea & biscuits. Enq: Graham 01736 762512

Happy Art every Thurs. at Hayle Rugby Club 1.30-4pm. Emma Davies 01736 753596 or 07765 041881

Hayle in Bloom. Last Mon. of the month, (not Aug & Dec) Passmore Edwards Institute 7pm.

www.hayleinbloom.org.uk

Hayle Breezers Group Thursdays. 1.30pm Passmore Edwards Inst.

April Hogarth 0781 376 7071

Bob Scales 01736 751735

Hayle Art Society Passmore Edwards Institute on Tues 1.30-3.30 & Wed 7.00-9.00 tel. Chris 01736 757720 or Penny 01736 756445

Hayle Canoe Club Meets every Wed at 6pm North Quay. All BCU1 star (or equiv.) and above paddlers welcome.

New paddlers welcome. Contact:

training@haylecanoeclub.co.uk

Hayle Christmas Lights

Last Thursday of each month except December 7pm Hayle Football Club, Viaduct Hill. New volunteers welcome.

haylechristmaslights@gmail.com

Hayle Community Archive.

Open Tuesday & Thursday 10 a.m. –

1p.m.:Tel 01736 753962, email:

haylearchive@haylearchive.org.uk

Hayle & District Bowling Club.

1.00pm every Wed Short Mat bowling indoors in winter 07766 662 908

Hayle Film Club. Films shown at 7.30 p.m. at Passmore Edwards Institute. Donna 01736 753184.

www.haylefilmclub.org.uk

Hayle Flower Club. 4th Wed. of the month 7.30pm, Hayle Day Care Centre, Tel: 01736 753248

Hayle Friends Group for CHSW

Hospice meets informally once a month under the chairmanship of Mary Trevarthen 01736754342

trevarthenmv@uwvclub.net

Hayle Guitar Club Wednesdays

7p.m.-9.30p.m. Passmore Edwards Inst

Hayle Harbour Users Association First Monday of each month, 7.30p.m. Royal Standard Pub R Lello 01736 757632

Hayle Judo Kwai Unit 7 Rospeath Industrial Estate, Crowlas. Tues & Thurs. Sensei Richard 01736 740723 or Karen Deacon 0779 209 9979

Hayle Library Reading Group. 2.pm first Wed. of each month .

Hayle & District Lions Club. 2nd and 4th Tuesday of every month, 7.30pm at Passmore Edwards Institute Sheila Williams 01736 797021

Hayle Lawn Tennis All ages and abilities welcome. Tremeadow Terrace, Hayle 01736 850843

www.haylelawntennisclub.co.uk

Hayle Local Vocalz - a 65 strong mixed voice adult choir. Mondays, 7.45pm, Passmore Edwards Inst. 07446 492266

Hayle Memory Café 1st & 3rd Mondays 2-4pm at Hayle Rugby Club Christine 07513 221066

Hayle Model Boat Club. Weds. 7-9pm & Sunday mornings 10-12 noon, meeting at green chalet by Hayle swimming pool. 01736 755516, or Les on 01736 754254

Hayle Model Railway Club & Duchy Railroaders Club Rooms Unit 5, Praze Business Park, Praze-an-Beeble. Mon. & Thurs. 7pm – 9.30pm. Bob Mims 01736 757910 bobmims@live.co.uk

Hayle Meanderers Every Wednesday.10.30am Commercial Road car park. Free, + contribution to carshare. Eddie Downing 01736 364673

Hayle Old Cornwall Society. First Friday of each month. Oct, to May at Passmore Edwards Inst. 7.30p.m. Trevor Smitheram 01736 756793

Hayle Penwith U3A at Hayle Day Care Centre

Chair Mike Stuckey 01736 753755

Hayle Pilot Gig Rowing Club.

Rowing out of Hayle Harbour most Tuesdays and Thursday evenings
chair@haylegigclub.co.uk

Hayle RNLI meets from March to November at 7.00pm the 2nd Wed. of the month at Unit 5 Hayle Industrial Park. Tel 01736 753567

Hayle Rotary Club Fortnightly on Mondays 7pm at the White Hart Hotel. D.Raymer 01736 755029 or T.Osborne 01736 793596

Hayle Surf Life Saving Club Riviere Towans Hayle TR27 5AF Captain: Dave Parker 01736 755303

Heyl St Piran Singers Every Wednesday at St Erth Old School Room 7.30 to 9.30pm Ann Thomson 01736 752335

Hayle Twinning Association 2nd Monday of each month at ASDA meeting room 7pm for 7.15pm start. Maurice Trathen 01736 753341 [email: moheyl@hotmail.co.uk](mailto:moheyl@hotmail.co.uk)

Heyl Town Band Rehearsals Tues & Thurs 7:30pm-9:30pm, Juniors on Thursdays 6:pm-7:00pm

Macmillan Cancer Support Meet at Three Trees, 16 Penmare Terrace, Hayle on most Thursdays at 7.30pm Suzanne Benney 01736 753635

Phillack Tower Bellringing every Tuesday at 7.30pm - Tina Morgan 01736 756567

Praze Hayle Choir Every Tuesday in the Methodist Church Hall 7.30pm Don Metcalf 01736 757720

Royal British Legion Passmore Edwards Institute. Every Mon. Wed. & Friday evening and Sat. afternoon. Mr Alan Conquest 07470 308400

Save Our Sand For date and venue

of meeting, go to www.sos-hayle.org.uk. Or visit Facebook. To go on our mailing list contact saveoursand@talktalk.net

Scrabble Club at Connor Downs 2nd Thurs each month at W.I.Hall. 2-4pm £2 for hall & refreshments .

carolinewindsor123@btinternet.com

Shore Surf Ladies Only & Juniors Surf Club All abilities

welcome. Every Saturday 9 – 11am. 01736 755556 Beachline 07855 755556 info@shoresurf.com

St Erth Concert Band Rehearsals Tues.7.30 to 9.30pm in Methodist Ch. Hall st,erthcb.enquiries@gmail.com www.sterthconcertband.co.uk

St. Erth Friendship Club for the over 60s Tues 2-4pm £1.50 per session St Erth School Hall 01736 850758

St Ives and Hayle Community Choir Tuesdays 1.30pm to 3.00pm at St Anta Church Hall, Carbis Bay 07446 492266

Stroke Community Café 2nd \Tuesday of month. 10am Wyevale Garden Centre Café simon.eastment@stroke.org.com

Table Tennis for Fun, every Friday at 2pm at Hayle Methodist Church Hall, John Nunn 01736 759686

The Cast Theatrical Performance Group Every Wed 7.00pm St Erth Methodist Hall

West Cornwall Concert Band Monday 7-9pm at Camborne Wesley Church – Please email Becky

Lovegrove at westcornwallconcertband@gmail.com

W.I. Hayle 1st Tuesday of the month, 7.00 pm at Hayle Rugby Club Margaret Stockton 01736 756007

To appear on this page free of charge drop in details to: Angove Sports, Passmore Edwards Institute, The Farm Shop or email editor@haylepump.org.uk

- | | | |
|-----------------------------|-----------------------------------|--|
| 2 1st Choice Paving | 37 DIAL | 23 Plantech |
| 35 Abode | 5 Direct Transport | 7 Property management |
| 9 A. McDonald | 11 Drecklys | 14 Peter Luing Piano |
| 17 All Aerials | 5 Farm Shop | 9 PSD Studios |
| 30 Angove Sports | 13 Flowertime | 39 Seymour and Jago |
| 12 Big Pink Tree | 4 Gallery Café | 23 Shears Gardener |
| 10 Bespoke Picture Framing | 38 Harvey Rail | 33 Stephen Murley |
| 18 Biz and Bytes | 23 Hayle Cycles | 25 Sylvia's Exercise |
| 13 Blewetts | 29 Hayle Day Care | 32 T. Hosking Roofing |
| 22 Bush Monkey | 35 HSC Mobility | 6 Thurstan Hoskin |
| 18 Cafe Riviere | 6 Jake's Mobile | 26 T J Barbers |
| 14 C.A.M. Properties | 29 J C Electrical | 37 T J Carpets |
| 4 Castaways | 31 John Andrews | 36 T P Wills |
| 21 Chimney Sweep | 28 John Pollard | 10 Transformations |
| 31 CJS (Craig Shepherd) | 5 Julia Woodhams | 27 ULA Clothing & Fashion |
| 3 Clare Mungles | 30 Kim Hopkins Yoga | 20 Webb & Philp |
| 39 Cliffords Plumbing | 19 Krog Den | 36 W Cornwall Back Pain |
| 19 Colin Best | 18 L & M Taxis | 32 W. Cornwall Plastics |
| 27 Copperhouse Jewel | 26 Ladies Room | 43 Winns Funeral |
| 17 Cornmill Studio | 15 Lewy's Fish & Chips | 28 Yoga in Hayle |
| 34 Cornwall Chiro Clinic | 7 Mad Hatter | 30 Zip Inn |
| 33 Country Skittles | 25 Mandy Evans | Pick up points in bold. Also at |
| 8 Dapper Dogs | 13 Mobile Foot Clinic | Library, Surgery, |
| 24 Dave Thomson | 16 Paradise Park | Copperhouse P.O. Warrens at |
| 36 David N'jie | 38 Passmore Edwards | Foundry, McColls, Hampsons |
| 6 Declutter Your Home | 11 Paul Sherris | Launderette, Old Foundry |
| 8 Des Button | 12 Philips Pasties | Chapel, Spar, Angove, |
| | | Hospice Shop etc. |



W J WINN FUNERAL DIRECTORS



We are here to help you 24 hours a day

- Funeral Pre-Payment Plans
- Memorials
- Private Chapels of Rest

WJ WINN

Trenwith Terrace

St Ives TR26 1QE

Tel: 01736 793029

WJ WINN

69 Fore Street

Hayle TR27 4DX

Tel: 01736 752124

CHARLES BRYANT & MARAZION FUNERAL SERVICE

North Road, Goldsithney, Cornwall TR20 9JY

Tel: 01736 710318



Part of Dignity plc. A British Company





HAYLE HERITAGE CENTRE

**John Harvey House
24 Foundry Square, Hayle.**

**TR27 4HH
01736 757683**

FREE ENTRY

**OPEN Tuesday to Saturday, 11a.m –4p.m.
Until the end of August.**



**DROP IN ON OUR FREE
CHILDREN'S ACTIVITIES,**

on Tuesdays 1p.m. to 3p.m.

EXHIBITIONS- GUIDED TOURS - SHOP

Fully Accessible – Dog Friendly



www.hayleheritagecentre.org.uk