

HAYLE PUMP NEWSLETTER



LEFT: Keeper Donna Sinclair feeding Jai-Li the Red Panda and right in the food room helping to prepare food for over 1,200 birds and animals.

Paradise Park continues its fight for survival through the winter months

See page 8



Free! thanks to our volunteers and advertisers.



Hayle Pump Newsletter

Passmore Edwards Institute, 13-15 Hayle Terrace TR27 4BU

The Pump is produced by volunteers as a community newsletter.

NB All articles accepted are not necessarily the view of the editorial team.

View online at www.haylepump.org.uk

Editorial team contact

editor@haylepump.org.uk

Web site

John Bennett

webmaster@haylepump.org.uk

Team Members

Tina Morgan (Subscriptions)

Claire Sheppard (Treasurer)

Stephen Murley (Editor)

John Cole (Distribution)

Jeff Turk (Advertising)

NEXT ISSUE = April/May 2021

Send any articles or copy to:

- editor@haylepump.org.uk

or drop off at:

- Angove Sports (Copperhouse)
- The Farm Shop (Foundry)
- Passmore Edwards Institute (opposite War Memorial)

**NEXT DEADLINE is
13th MARCH 2021**

Subscriptions

Tina Morgan

Phone: 01736 756567

For 6 issues by post, please send a cheque or postal order for £4.30 made out to **Mrs T. Morgan** and send to **Mrs T Morgan, 29 Bodriggy St., Hayle, TR27 4NB**

Please give your name and number as well as the delivery name.

Advertising

Jeff Turk

Phone: 01736 752319

Send your adverts to:

ads@haylepump.org.uk

or use the drop off points.

Advertising Rates:

1/8	63 x 47.5	£10
1/4	63 x 95	£15
1/2	NA	

1st CHOICE PAVING

Drives, patios, paths, landscaping, resin bound aggregates and artificial grass.

01736 753087 07969 960128

www.1stchoice-paving.co.uk



Mayor's New Year Message.

I am very glad to see the end of 2020, normally I reflect on achievements during a year, last year I merely see Coronavirus, businesses closing and struggling, my friends and family in isolation to keep themselves safe. It has been a horrible year but I must reflect on the wonderful effort of our essential workers, at hospitals, in the community, everyone you are heroes and deserve the highest acclaim. A huge thank you from Hayle.

What can I look forward to in 2021? Well first and most important a Coronavirus vaccine that will provide herd immunity and hopefully we can all say goodbye to it once and for all. When I am called for the vaccine I will be there. I look forward to meeting my family and friends and giving my grandchildren a cuddle. To walking freely and visiting our local shops, to watching our local sports teams, visiting The Day Care Centre and playing snooker at Passmore Edwards Institute, to having a meal out and most of all being free of restrictions. Let's hope that 2021 provides the area with prosperity, an abundance of sunshine and people smiling.

As we leave Covid 19 be grateful that we have survived, and can relate how we survived.

Clive Polkinhorne
Mayor of Hayle.

PLANTECH GARDEN SERVICE EST 2006

Lawns & Hedges Cut
Tree & Shrub Pruning
Lawn Care
Treatment
Services
Gardens
Cleared



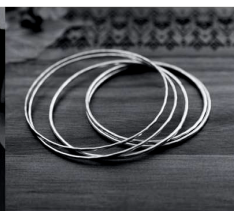
Free No Obligation
Quotes

Mob: 07979 546434
Tel: 01736 754401

Brett & Leni
HANDCRAFTED JEWELLERY

Make your own perfect gift at our
jewellery making workshops

Gift
Vouchers
Available



We offer one-to-one, parent and child or small group bookings. All materials and tools provided. Covid-19 safety measures in place.

To book your workshop session contact us:
Tel: 0757 077 4332 E: sales@brettandleni.com
Shop online: www.brettandleni.com
Unit 6, West Stables, Foundry Lane, Hayle

Council Corner February/ March 2021



continues to work with and support a number of groups and organisations in the town annually, including Hayle Day Care Centre, Hayle in Bloom, Hayle Decorative Lights and it also contributes to the work of the Towans Ranger.

New Councillors and Council Vacancy

In December 2020 the Council welcomed two new councillors. June Lawrenson-Reid and Josh Daniel, who will represent the South Ward and North Ward's respectively. We extend a warm welcome to you both and look forward to working with you.

Harry Blakely has recently resigned from the Town Council. He has been very active in the community, particularly as Chairman of the Hayle Residents Association, as well as serving on the council for several years. We thank you Harry and wish you well for the future.

Harry's departure means we still have a vacancy, in the South Ward. More information is on the council's website. If you would like to get involved and take an active role in shaping the future of Hayle, please contact the Clerk, details below, to have an informal chat to find out what is involved.

Covid-19

We are still trying to deliver as many services and function as normal during this third lockdown.

Council meetings are still continuing, albeit remotely via Zoom. These are open to the public and you are welcome to watch via the live streaming facility and/or register to speak if you have something to say or raise.

The town's library remains open on a

2021/2022 Precept Demand

Hayle Town Council's Precept will increase this year by 5.9%. The final Precept for 2021/22 is £635,784.

The Town Council uses the precept funding to continue to provide many services such as public realm CCTV, public conveniences, footpaths maintenance and management of all open spaces, including Hayle Recreation Ground and King George V Memorial Walk, the Open-Air Swimming Pool, Hayle Community Centre and Hayle Library. Additionally, the Town Council



*Are you
finding it
difficult to
reach and
cut your
nails?*

Beth and Sarah at 'Happy Feet' can help.

We are fully qualified to offer routine
Foot care including nail reduction,
Treatment of callus and corns,
ingrown nails,
fungal/thickened nails all in your
own home

01736 753908 07759 149377

30, St Georges
Road,
Hayle,

TR27 4AL



reduced basis and a click and collect basis, more information can be found on both the Cornwall Council and Hayle Town Council website.

Following government guidelines, the tennis and MUGA courts have been closed to the public and more recently we have had to take the painful decision to close both the play park and the skate bowl. We are aware that some people continue to ignore the signs, climb the gates and congregate in these areas, please don't, you are putting not only yourselves but your family and friends at risk. We ask that parents and carers keep a check on their children's activities. The playing field remains open and available for use.

Public toilets remain open at this stage as do all of the other open spaces in our ownership or under our management.

Update on the former Hawkins Motors Site – Hayle Terrace

We are pleased to confirm that things are on track for the site to be formally transferred to the Town Council. It may well have happened by the time this is published!

The Amenities Committee will soon be looking at all the suggestions that members of the public supplied for the site. Thank you for your interest, we will keep you posted as decisions are made and the plans progress.

King George V Memorial Walk

As you most likely have seen, the town council applied to Cornwall Council for the temporary closure of the King George V Memorial Walk

for vehicles, except for access. The walk, which hosts stunning sub-tropical gardens and borders Copperhouse Pool, has always been popular with walkers, cyclists and equestrians, but the need for social distancing has meant increasing numbers of these people using the highway, bringing them into conflict with motorists who use the walk as a short-cut to and from the Foundry area of Hayle. This has been made worse by collapses of the cliff onto parts of the footpath, forcing pedestrians onto the highway and limiting the ability of cars to pass each other safely. To reduce the risk of vulnerable road users being killed or injured, Hayle Town Council recently voted to apply to temporarily close the road to through traffic for six months. It has been closed to through traffic on Sundays since

Julia Woodhams

MAR: MIGHT: MBRCP

COMPLEMENTARY
THERAPY PRACTITIONER

Aromatherapy, Reflexology,
Reiki Healing, Indian Head
Massage, Hot Stone Massage
and Aromatherapy
Facials with organic
oils.

For appointment or
enquiries

Ph: 07960 181497
01736 603397

Email: roo61@hotmail.co.uk

Gift Vouchers available.



2012. Cornwall Council is considering the application and reviewing the Traffic Regulation Orders to see if this can be done and we are anxiously waiting their response.

Hayle Harbour Development

Planning application number [PA20/05161](#) for North Quay Road, Hayle Harbour, Hayle is scheduled to be considered by Hayle Town Council on 21 January 2021 and its views will be submitted to Cornwall Council on Friday 22 January (both dates correct at the time of writing), following a vote to defer in December 2020. The Town Council's response will be published on Cornwall Council's planning portal and also on the Town Council website. Cornwall Council's Strategic Planning Committee will be determining the application at its

meeting on 4 February 2021. This meeting will be live streamed and available on demand, as usual.

Hayle Town Council
Hayle Community Centre
58 Queensway

Hayle
TR27 4NX
01736 755005

info@hayletowncouncil.net
www.hayletowncouncil.net

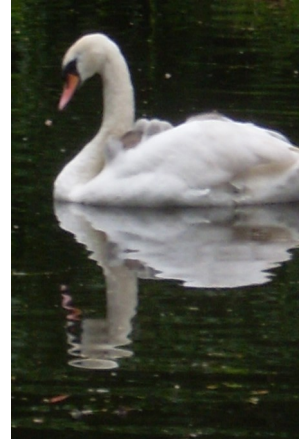
Office hours 9.30am – 12.30pm

Millponds Update

What a strange end to 2020 with the modern version of the Great Plague still causing us so many problems. Just having a single day at Christmas was really sad for all those families who had spent months apart but at least our Christmas Lights Committee did a great job. The decorative lights really looked great and helped us get through it all to 2021.

The ponds are still very clean and we have got our bench back again on the Inner Pond.

The ducks are happy and in good health. We have some females back and we had three broods of



GRAFTERS

LOCAL BUILDER WITH OVER 30
YEARS EXPERIENCE...

EXTENSIONS : Brick & Block work
STONE MASONRY: Rendering,
Re-pointing.

ROOFING: Slate, Tile, Fibreglass.
Patios, Decking, Fascias, Soffits &
Guttering, External Painting.

FOR A FREE QUOTE CALL **GARRY**

07456 180 980

ducklings. There were eighteen to start with. The highest number of ducklings we have ever had. We still have fourteen survivors. The female Mandarin has moved on but we have a white drake which maybe a relative of Snowy, our little white Call Duck. He has settled in well with the other drakes.

The squirrels still visit us now and then but the turtles have settled down for the winter now. I am not really surprised. We have had real winter weather with thick frost and even a snowflake or two. We had a feeling about this winter with all the berries on our hawthorn and holly.

The Ropewalk and Gardens are tidy and visitors are keeping them rubbish free. Thank you for all your efforts.

The daffodils are peeping through the lawns and should make a cheerful splash of colour.

We are now back in Lockdown again because of the Covid virus. Use the Millponds area for an exercise area and take care of yourselves. This situation cannot go on for ever and all we can hope for is that come the Spring we can return to some sense of normality.

See you all again soon.

Georgina Schofield

Volunteer Wildlife Warden

Mr. B's

Famously Fresh Ice Cream

- Coffee & other hot drinks
- Traditional ice cream desserts
- Healthy salads
- Fudge - Buy 3 bars and get a 4th one free!!

Eat in or take away
(subject to Covid restrictions)

OPEN DAILY

Fore Street, Copperhouse

f [mrbsicecream](#)

• [mr_bs_ice_cream](#)

Tel: 01736 757925



Due to Coronavirus our shop at Foundry (opposite Asda) will remain closed until 2021 for safety reasons

www.mrbsicecream.co.uk



**The Oldest
Chippy in
Hayle!**

Opening hours

Sunday — Monday: Closed

Tuesday: 4.30— 8

Wednesday: 4.30—8

Thursday: 12—8

Friday: 12—8

Saturday: 12--8

Collection only

We have a 5* Hygiene rating

See us on  @Lewy's Fish & Chips

01736 759381

48 Penpol Terr Hayle TR27 4BQ

Paradise Park continues its fight for survival through the winter months



A simple pleasure for a parrot, this Crimson-bellied Conure is loving the large carrot wedged into perching which was from one of the many food donations.

Staff at Paradise Park in Hayle have had to make the hard decision to close to visitors for a period of time.

Director Nick Reynolds explains “We have reached a point where being open during January will cost us money. Fifteen years ago, we invested in our big indoor play centre and, as we hoped, our winter seasons were transformed. Now Cornwall is in tier 3 the Jungle Barn is closed, which is understandable, but sadly with the cold wet weather visitor numbers have already dropped and we can’t economically staff the entrance, shop and café.

We have also taken into consideration the need to protect our staff from covid-19, we really can’t be without our Keepers so minimising their contact with any people is wise. The Keepers have worked hard doing their jobs this past year plus dealt with all the additional hand-washing, mask-wearing and distancing. As with many businesses in Cornwall, we get through the winter on the money we make during the summer. But with the first three-month lockdown and then restricted visitor numbers we have not been able to make up lost income, and the cost of looking after the animals continues every day. We have been able to secure some funding which has helped in the

ALEXANDER McDONALD

Gutter clearing and fascia board cleaning. Painting, pressure washing, gardening services. Also Fencing and Fence repairs and all those little jobs you keep putting off. Free estimates.

Big enough to cope, but small enough to care!

Mob 07880 777 591

Home 01736 753102



short term, and are hoping to receive a positive outcome from our DEFRA grant application, and meanwhile relying very much on the local community and supporters from further afield with donations of food, money and items from our Amazon Wish List.

So once again we are putting out an appeal to help support the Park through this tough time. It costs a minimum of £46,000 every month to care for the birds and animals, the same if we are open or closed as they always need their feed, and there are staff wages, vets bills, water, electricity, enclosure maintenance etc. We have a donations page on our website which includes all the different ways people can help.”

Visit the Paradise Park fundraising page here <https://paradisepark.org.uk/support-us/donations/>

“You can also see examples of how much it costs to feed some of the birds, for a penguin it is just over £10 a week and we have 21 penguins, so that works out around £11,000 a year just for the penguin colony. In total we have 1,200 birds and animals so every gift really will make a difference to ensure the high standard of care we pride ourselves on continues every day. We are keeping positive because every day we work with

Sweet Williams Florist
for the personal touch



Mobile

07928 100690

Landline

01736 740644

www.sweetwilliamsflorist.com



HYDRO BATH BLOW DRY
BRUSHING NAIL CARE
EAR/EYE CARE FLEA TREATMENT
DEODORIZE CLIPPING.

ALL NATURAL PRODUCTS.

PH 07903 042950

Lesley 01736 850971

E-mail lesleyandkeith@msn.com

City of Guilds Trained

Little Plumbing Jobs

*"No job too small
just gimme me a call"*

07779 157157

Simon Miller

amazing animals and as so many species here are extremely endangered - we have spent decades working with them here at the Park and on their conservation in the wild.

A food donation can be dropped off in the Covid secure delivery box in the coach park

Dreckley's Waste Collection

House Clearance & Deliveries

No job too small

**Garages, Houses, Sheds, &
Gardens cleared.**

Fully registered & insured.

**Honest reliable friendly
service.**

Call Suzanne on 07877 325404

Email: dellamuro@btinternet.com



where items can be safely left between the hours of 10am and 4pm any day.

We will announce a reopening date as soon as we make the decision, and I would like to assure our Season Ticket holders that we will extend their passes by the amount of days we will be closed.

The messages of support we have received give us much needed hope for the future and we look forward welcoming visitors back through the doors soon to create amazing family memories."



Hayle Twinning Association enjoyed an online Christmas party with twinning friends from Pordic in Brittany. We raised glasses of wine to toast each other. The Bretons were bemused by our Christmas crackers, paper hats and other customs revealed in the Christmas quiz, designed by Mike Stuckey.

We will be holding our AGM on zoom this year on Monday February 8th at 7pm. Anyone wishing to attend, email maureenmason2000@yahoo.co.uk for a zoom link.

We have a provisional booking with Brittany Ferries for our visit

over the August bank holiday this year and hope to welcome the Bretons back here in October. We welcome new members of all ages, and you don't have to speak French! (Most of us can't).

If you are interested in joining the exchange visits, or just want to find out more, please contact our chair, George Daniel, on 01736 333236 or Secretary Mike Stuckey 01736 753755.

"The first time I met my wife, I knew she was a keeper. She was wearing massive gloves."

Don't let kids go hungry in Cornwall

Nicole Pashley and I held a free event at Hayle Rugby Club for **Don't let kids go hungry Cornwall** in December.

We would like to say thank you to Sharon at the Rugby Club for letting us host it, the Hamlet Restaurant for donating 20 food hampers with turkey crowns that got delivered to families.

We also had kind donations from Trevaskis Farm, Richards Farm Shop with fresh veg for the food boxes & Morrisons Penzance & Redruth stores and Lily Rose for donating to the just giving page

Bespoke Picture Framing



Paintings,
Photographs
Textiles, Canvas
Cross-stitch, Memorabilia,
Conservation
Mobile Service offered
Tel: 07502 392 839
www.itsallintheframe.co.uk
gilly@itsallintheframe

GillyHooper
32 Chenhalls Road,
St Erth
TR27 6HJ.

PAUL SHERRIS

Hayle's only
local family owned
**FUNERAL
DIRECTOR**
Private Chapel of Rest
Pre-Payment Plans
available
West Terrace, Hayle.
TR27 4JS.
01736 753969
Day or night

WEST CORNWALL MOBILE FOOT CLINIC

For the professional treatment
of:

Corns & Callus Diabetics
Verrucas Athletes Foot
Thickened Nails
Fungal Infections
Ingrowing Toe
Nails
Cut-trim Nails



All in the

comfort of your own home

Peter Williams

S.A.C.Dip FHPT/FHPP

07901 803493

Evening & weekend calls
available.

pwpetewilliams@googlemail.com

<https://www.justgiving.com/crowdfunding/dontletkidsgohungrycornwall>

The event was for families in need. For people struggling financially for whatever reason. They were able to attend and pick up items for free. We had toys, games, clothes, food hampers, books and gifts. 50 families attended in total on the day. 80 families supported with the hampers we delivered.

We will be doing it again next year. If anyone has items they would like to donate. Toys, games, arts and crafts, making sets, clothes, books. As long as they are clean, working and complete we will accept them and be very grateful.

Thank you 😊 Tamsin Chatfield

Sin Bin Collection for Cornwall Hospice Care

For 40 years the team at Trevaskis Farm in Connor Downs have run a Sin Bin collection tin as part of their 'pick your own' operation. The idea is that people make a donation to charity in lieu of the fruit they eat when picking. It seems like folk have been very honest too and this year 'the sinners' have helped contribute £3,000 to Cornish healthcare charity Cornwall Hospice Care.

Julie Treneer, the charity's fundraiser in West Cornwall, says; "The Sin Bin was started by the father of current owner Giles

The Big Pink Tree

**Fantastic range of
Greeting Cards
Gifts for All
Locally Made Crafts
Jewellery
Large range of JellyCat
& much much more.**

Click & Collect
Delivery
www.thebigpinktree.co.uk
01736 757006

Thank you for shopping local
#shoplocal #thebigpinktree

Eustice 40 years ago when our Mount Edgcombe Hospice in St Austell first opened. Sadly, he later died in our St Julia's Hospice in Hayle, but the Sin Bin continued and the family have now helped raise more than £40,000 to help fund the care we provide. We can't say a big enough thank you at the end of what has been our 40th anniversary year."

Giles Eustice adds; "In our 40th year we had so many plans to celebrate '40 years of farm gate sales' with much of it focused on specific charitable events on the farm. My late father founded the farm retail in 1980 and the 'Sin Bin' has been a feature that is engraved in my childhood memories. I am confident yearly donations have rarely dropped below a staggering £1,000.00, such is the burden to repent for eating such fabulously tasting strawberries!

It seems hard to believe that such a simple idea this many years on could have achieved such an enormous amount of money for the valuable work with local charities. It felt right this year to top it up considerably as I am aware it has been a challenging year for all but not least our community support structures, such as Cornwall Hospice Care. I have appreciated the amazing care offered on more than one occasion sadly.. We look forward in hope to many

more years years of good-hearted sinners supporting our community.



Giles Eustice at Trevaskis Farm in Connor Downs, home of the sin bin fundraising tin!

Send Flowers to Say

Happy Valentine's
Thinking of You
Stay Strong
Happy Mother's Day
Get Well Soon Love You
Sorry Happy Anniversary
See You Soon
Happy Birthday
FlowerTime @ The Big Pink Tree
01736 757006
www.wesendflowers.co.uk

For more information, please contact Tamsin Thomas on 07929 730216 or email tthomas@cornwallhospice.co.uk



**Well,
Spring
is just
around
the
corner**

and we are already looking forward to a colourful summer. Plants have been ordered from Kehelland Nurseries ready for the year and we are planning for

‘rainbow colours’ so the displays will be “bright and bold” says Chair, Richard Barber.

As far as we know the R.H.S. competitions will be held this year, but this is not confirmed as yet. Either way, our intention is that Hayle will look fantastic in 2021!

As Spring approaches, you, the readers, are also invited to undertake some of your recommended exercise sessions by doing some weeding and maybe also some litter-picking in communal areas near you (wearing appropriate clothing and mask of course!). I will be starting near the Bouledrome soon!

Unfortunately, there are still no monthly meetings being held, with current Covid restrictions in place. Hopefully, the results of the vaccination programme will begin to change these soon and guidelines will start to alter.

We wish everyone well and hope we all enjoy a better year in 2021!

For more information or offers of help/ideas/sponsorship, please contact Richard Barber (Chair) on email : rbarber00@outlook.com

I'm a big fan of whiteboards. I find them quite re-markable.

THE FARM SHOP
31 Penpol Terrace, Hayle,
TR27 4BQ
Open 7 days a week
8am—5pm
FOR ALL YOUR LOCAL
PRODUCE
Fruit, vegetables, plants, flowers,
free range eggs, and Cornish
potatoes
NOW IN
Primroses, local Daffodils,
and Valentine Flowers



Invasive species are one of the top five drivers of biodiversity loss worldwide and a problem which many conservation projects have to deal with. In sand dunes, invasive species can change how the dunes look and function, often out-competing slower-growing dune species. At Hayle Towans, the Dynamic Dunescapes project www.dynamicdunescapes.co.uk and the Friends of the Towans volunteer group (www.friendsofthetowans.co.uk) are working together to reduce the number of invasive plants there.

Some invasive plants may be garden 'escapes', where seeds have blown in from gardens or been 'deposited' by birds; Buddleia, pampas grass and Cotoneaster are typical examples of this. These popular ornamental

JAKE'SMOBILE

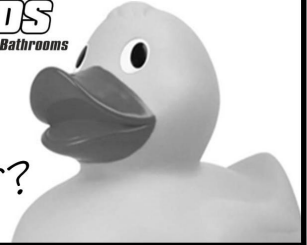
PHONE REPAIRS

01736 757233

07873 799 930



Need a
Plumber?



**From a dripping tap to a
complete bathroom**

Free quotes and planning


Emergency call out service

We are there when you need us!

Water industry approved plumbers

01736 755170 – 07761938183

cliffords4@btinternet.com

 Cliffords plumbing and bathrooms



Kinsei Refill

is located in the old foundry chapel, stocked full of your everyday refill

needs, so you can reduce packaging especially single use plastic, reducing the amount of waste to the environment. We stock rice, pasta, spices, herbs, grains, dried fruit, sweet treats as well as body care and household cleaning products. We offer an online service and click and collect.

www.kinseirefillplus.com



PHILPS

FAMOUS PASTIES OF CORNWALL

Order our Famous Cornish Pasties online to be delivered to your door at www.philpspasties.co.uk

Hayle East Quay 01736 755661

Hayle Foundry Hill 01736 753302

Marazion 01736 710332

Praze-an-Beeble 01209 831360



plants look great in gardens, but in sand dunes they smother native species and can be difficult to remove. Sometimes though it's native species that are problematic. At Mexico Towans, clematis and bramble can become rampant if unchecked, spreading thick and fast over dune vegetation.

As part of the management plan for Mexico Towans, work to remove invasive plants is taking place. This work focuses largely on the south western boundary, where the site borders Riviere Sands holiday park and Phillack village. Though some of this work may appear alarming at first, as it can involve large machinery, targeted mechanical removal is fast and has the advantage of reducing chemical use. Follow up work by groups of volunteers can then rake and burn the cuttings, creating space for sand dune species to thrive. While this work is much needed, in the long-run prevention is better than cure. Dune soils are typically nutrient poor – so soil enrichment can create problems. This can occur from sources such as dog fouling and discarded garden waste. Garden waste can even be a double-whammy to the dunes, as many invasive species first enter dune habitats when garden waste is discarded there. The good news is that we can all help to prevent invasive species from getting established...

ALL AERIALS

TV Aerial & Satellite TV Specialists.

digital

Registered Digital
Installer



25 Years Experience

For all aspects of Tv Aerials,
Satellite Systems Fixed &
Motorised, Installations &
Repairs

Free Friendly Expert Advice By
Local Engineer.

Tel : 01736 759225

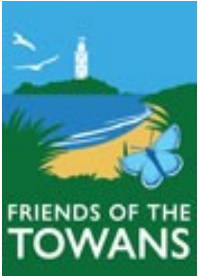
Mobile : 07979503907

Email. jonathan@allaerials.co.uk

If you enjoy walking your dog on the dunes (and who wouldn't!) always pick up after your pooch. This avoids extra 'fertiliser' being added to the dune system.

Don't discard garden waste on the dunes. This avoids adding nutrients to the dunes, as well as preventing the seeds of invasive species from being moved there.

You can also help the management of these amazing sand dunes by becoming a volunteer. If interested, please contact People Engagement Officer



andy.nelson@cornwallwildlife.trust.org.uk or
Towans Ranger Martin Rule
on 07854 123877.

**Picture
your
pandemic**



Hayle Heritage Centre requests material about the local impact of the Covid-19 pandemic to collect for posterity.

There are so many ways in which this pandemic is impacting our lives and though we are physically distanced from one another, in many ways our community is stronger than ever as a result of this shared experience.

We are asking for photographs from your daily walks, pieces of writing, oral histories, videos or objects which tell your story as a member of this community. In years to come, this collection will prove an invaluable educational resource with which to teach this period of history.

Similarly, we would like to collect material from local

THE LAWN RANGER

**KERNOW GARDENING
SERVICES**

**HEDGING, STRIMMING AND
TRIMMING, WEEDING,
SEEDING, SOWING &
GROWING AND ALL YOUR
GARDENING NEEDS.**

Call Simon:

07900 963 901

business, illustrating how the pandemic has affected your service. This could include flyers for new takeaway services, photographs of your social distancing measures, customer feedback or business closure signs; it is this ephemera that will help to tell the local experience most authentically in years to come.

If you would like to participate by donating material, please send digital copies to daisy@harveysfoundrytrust.org.uk

Alternatively, if you have physical items that cannot be sent by email, please still get in touch and we can arrange

collection once regulations permit.

We look forward to capturing your stories. Thank you all for your continued support.

Hayle Christmas Lights 2021

Last year has been like no other and we hope one not to be repeated. However it has also shown the good in people and this has been a really positive part of the pandemic.

Despite not being able to hold any face to face meetings or hold any fund raising events, local residents, local businesses, town & county councils and others have been really generous and helpful and allowed us to again keep Hayle bright during Christmas 2020. This brightness was really enhanced by the many locals who also put up their own lights and gave us a lot to feast our eyes on.

We would like to thank all those that contributed to the lights around Hayle, either in putting up their own displays or in donating to Hayle Christmas Lights. We would also like to give a great big thank you to the small band of people who helped put up our lights including Chris, Colin, Keith, Patrick, Penny and again these and others who helped in raising the Christmas tree in Penpol Terrace.

Des Button
**Electrical Services &
Supplies**
**Rewiring,
Fitting Consumer
Units,
Sockets & Switches**
Emergency callouts.
**For Free Estimates &
Friendly
Advice
Call**
**01736
753211**



This winter seems to have been exceptionally wet and windy and this has had an effect on the lights. Storm Bella actually snapped the Christmas tree in Penpol Terrace. Fortunately this was after Christmas, as we had to reluctantly decide to take it completely down. The driving wind and rain has also caused some problems with water getting into a couple of the lights which caused them to fail.

The lights are now off until next Christmas but our work will continue throughout the year when we look forward to being able to put up more lights and trees. We are hoping to extend the lights along Penpol Terrace towards Philips, replace the string lights in front of the Day Care centre and those along Copperhouse and possibly add to our displays elsewhere. Next year we are also planning to add another Christmas tree in Copperhouse. This has already been funded thanks to a generous



**DAVE
THOMSON**
**DECORATING
INTERIOR &
EXTERIOR.**
FREE QUOTATIONS
TEL 07518 136 730
01736 754647
Dave.thomson2013
@hotmail.co.com



ZIP INN
Repairs & Alterations:
Soft Furnishings: Loose
Covers
Pat 0797 973 0738
Hayle

Café Riviere

Across Hayle's Jubilee Bridge

**Serving a variety of hot
food, late breakfasts,
drinks, ice-cream, cream
teas and snacks.**

- *Indoor and outdoor seating.*
- *Take-away is available.*
- *Open all year.*
- *Next to the public open-air swim pool, sub-tropical gardens, promenade and nature reserve.*

donation from the Hayle Pump for which we give our grateful thanks.

We plan on doing some work during the summer and would welcome anyone to come and help us so that we can make Hayle even brighter for all next Christmas. If you are able to spare a little time please contact us via Facebook (www.facebook.com/groups/haylechristmaslights), email at secretary@HayleChristmasLights@gmail.com or our chairman, Patrick Kirkham on 07787 962001.

A perfectionist walked into a bar...apparently, the bar wasn't set high enough.



I take my dog along the King George Walk almost every day. It is often commented upon that getting out for exercise and fresh air is good for body and soul, especially in these Covid times. There is no doubt that the folk of Hayle have taken this on board. On a fine day, the Walk is abuzz with mums and dads, kids of every age, and others of every genre. Add to this the dogs, the scooters and skateboards, pushchairs and bikes, and there is a palpable feeling of well-being and camaraderie. Almost

	Webb & Philp Ltd electrical contractors	
		<ul style="list-style-type: none">✓ Re-Wires✓ Security✓ Showers✓ New Build✓ Testing✓ Maintenance✓ PAT Testing✓ Extra Sockets & Lights
All aspects of Electrical work undertaken		
Free Estimates. No Job Too Small. Prompt. Reliable. Fully Qualified. Est 1972		
www.webbandphilp.co.uk		
Tel/fax 01736 753651 Mobile: 07419 376882		
Email: electricians@webbandphilpltd.co.uk		

everyone has a smile or a greeting. It is a happy place to be.

There is the added attraction of the bird residents on Copperhouse Pool. The flock of snowy white gulls who roost there when the tide is out seems to grow by the day. The waders are busy at the water's edge seeking out morsels from the mud. The swans add a touch of elegance, gliding silently along minding their own business. The feral geese come and go, loudly announcing their arrivals and departures. Egrets gather in small crowds to feed together. A pair of binoculars will reveal other birds to those who wish to see more. I saw a purple heron early one morning, reflected in a pool as the sun rose behind a cloud. It made my day.

'Til next time,
Tina Morgan



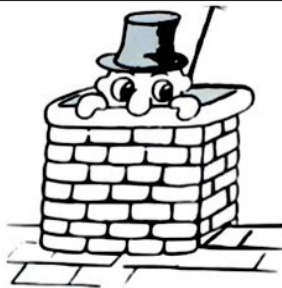
Hayle WI

Unfortunately, we only managed to hold two

meetings in 2020 before the Covid restrictions brought a sudden halt to our planned meetings and outings.

However, two activities have been able to continue:

The walking group has continued to enjoy their monthly local strolls



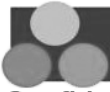
LAWRENCE BUTCHER CHIMNEY SWEEP

Traditional and power sweeping, Solid fuel servicing and repairs, certificates issued, CCTV flue inspections, cowls fitted, CO alarms fitted, fully insured

07966 547829
01736 850033

loloubutcher@aol.com





CVC
Solicitors

Confidence to Care for all your Legal Needs!

We offer advice on the following:

Business & Employment, Conveyancing & Property Matters, (including Commercial), Family & Children, Civil Litigation & Personal Injury, Wills and Inheritance Tax, Lasting Powers of Attorney, Probate & Estate Administration, Elderly Client and Care Home Fees.

We have offices in HAYLE, PENZANCE and ST IVES

We can also undertake home appointments in Hayle by arrangement.
Please call us to make an appointment on:

01736 362362 or

**email: enquiries@cvc-solicitors.co.uk
or see our website:**

www.cvc-solicitors.co.uk

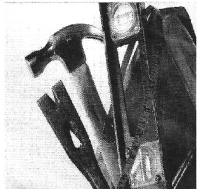
including an evening walk away from the crowds, especially in the summer months. This has proved beneficial not only for physical health but also for mental wellbeing. Thank you to Carol Curnow for organising these walks.

The gardening group led by Julia Jackson have continued to be busy throughout the year and many locals and visitors alike have complimented the ladies on having such a colourful flower bed. Even as we enter the winter season the bed is still a riot of colour and spring bulbs are starting to peek through the soil.

We were delighted to be awarded a certificate from the Royal Horticultural Society/ South West Hayle in Bloom in recognition of the contribution the flowerbed has made to the community of Hayle in providing an appreciation of nature.

Three ladies have also been busy adopting a flowerbed on King George's Walk. For Remembrance Day the bed was

Home & Garden Maintenance



Painting & Decorating
Carpentry, Glazing,
Stained Glass
Shelving, Doors
General Repairs
Alterations Etc.

Appliances Installed
Furniture Assembly
Flooring, Fencing
Gates, Decking
Hedge Trimming
Pruning Etc.



Seymour & Jago
33 Commercial Rd,
Hayle TR27 4DE

Local & Experienced
No Job Too Small

07813 324880 - 01736 756821

BIZ AND BYTES

07974 647524 01736 755971

If you require computer assistance, either training or to resolve a problem then give us a call. Visits arranged to suit you.

Looking after the home user and small business.

**WEBSITES • BROADBAND • TRAINING •
COMPUTER SUPPLY • TYPING**



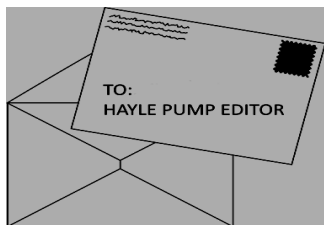
www.bizandbytes.co.uk
enquiries@bizandbytes.co.uk



adorned with poppies and as I type this it is decorated with colourful baubles and even a naughty elf hiding in the tree much to the delight of young passers-by.

We now hope that 2021 will bring the news that meetings can resume. Until then we will rely on communication by email or snail mail for ladies who do not have access to the internet and our committee meetings will be on Zoom. You can also check our Facebook page for updates.

Margaret Stockton



Dear Sir, I made an appointment through the Bodriggy Surgery for a Flu jab, being over 70 I thought it best. A letter came through the post explaining the procedure at the Rugby Club. 10 am. Saturday. There were three rows of cars which moved forward steadily as the volunteers who braved the howling gale and rain, vaccinated the seated patients in their warm cars. The whole operation went smoothly and was well organised as is the Covid 19 vaccinations being given at the Bodriggy Surgery.

ThurstanHoskin SOLICITORS

TALK TO US FIRST

Our experienced team offer a comprehensive service for:

- Property Services & Conveyancing
- Wills & Lasting Powers of Attorney
- Trusts & Court of Protection
- Commercial Property & Leases

At Thurstan Hoskin we like to take the worry and stress away from you.

HAYLE OFFICE

33 St Johns Street,
Hayle, TR27 4LL

☎ 01736 230 055

info@thurstanhoskin.co.uk

Mon - Fri 9am - 5.15pm

Not local? No problem - Check out our Redruth and St Agnes offices

THE COPPERHOUSE CLINIC

5 Market Square, Hayle. TR27 4EA

www.thecopperhouseclinic.co.uk

T: 01736 75 75 24

HCPC Registered Podiatrist

Sophie Combarel

Routine Podiatry, Fungal & Thickened Nail Treatments, Laser Therapies, Gait Analysis, Prescription Lab Orthotics, Cross Referrals to NHS & Private Health Professionals for maximum support and musculoskeletal rehabilitation.

Est.2008. *Free Parking*



Surgery staff and volunteers should be congratulated.

Thank you.

Stanley Martin

Olivia, the Hayle Town council gardener would like to thank all the volunteers and Hayle in Bloom for their support throughout the last year. It has been a very different twelve months and we have all had to adjust but everything has been kept to its same good standard.

Nigel Pellowe

I should like to thank everyone who put lights up around HAYLE

to help cheer us all up during the Christmas season.

Diana

The Memorial Walk Benches article in the July/August issue of the Pump at Hayle's wonderful King George V Memorial Walk led me to the following that I heard read at an obituary:

'The Dash'

by Linda Ellis

The dates on this casket read from the beginning to the end separated by a dash.

What matters most of all was the dash between those years, for that dash represents all the time that person spent alive on earth and now only those left behind know what that little line is worth.

For it matters not, how much we own, the cars, the house, the cash,

What matters is how we live and love and how we spend our dash.

So think about this long and hard; are there things you would like to change?

For you never know how much time is left that can still be rearranged.

If we could just slow down enough to consider what is true and real

Malt
Decorations
 Interior & Exterior
 Painting
07795 083 839
www.maltdecorations.com
 Hayle & Surrounding
 area

MW Carpentry & Construction

RENOVATIONS, EXTENSIONS &
NEW BUILDS

For All Your Carpentry Needs

Tel: 07930 073332 Email: m.w.carpentryservices@mail.com



and always try to understand the way other people feel.

And be less quick to anger and show appreciation more

and love the people in our lives like we have never loved before.

If we treat each other with respect and more often wear a smile,

Remembering that this special dash might only last a little while.

So when your eulogy is being read with your life's actions to rehash.

Would you be proud of the things they say about how you spent your dash?

Derek Simpson

A friend of mine told me he was going to a fancy dress party as a Cornish island.

I said to him "Don't be Scilly."

LOGGANS MILL AND H.T.P.

PART 2

Continued from Issue 152

"This article was originally posted May 11th, 2018 on Hayle Heritage Centre website by Daisy Culmer."



The Polkinhorns

Samuel James Polkinhorn, J.P., was an Alderman of the City of Truro and one time, its mayor. After learning the milling and wool treatment trades, he travelled about Cornwall and Devon on horseback, dealing with farmers and buying their wool. On his travels, he encountered the Hosken operation at Hayle and realised that no one in the family was interested in taking over a business that he could run. In the days when businesses were handed down through family links, he was viewed as an outsider from Truro. He had to do

something, so he courted and married Jane Rosewarne, the daughter of Catherine Rosewarne, née Hosken, and sister to William Ernest Rosewarne.

Sam could see the Hosken business coming his way and was stunned to find his brother-in-law had been dealing with the Trevithicks. Sam would operate the company's wool business at Tavistock.

H.T.P. in 1890

Just five months after the death of William Hosken, the largest conglomerate ever formed in Cornwall emerged. It was complicated and led by a number of men who didn't really know



each other, nor how to run the business. Sam Hosken, the most respected director, was made the unwilling chairman but seldom attended a meeting. The other directors were Trevithick brothers on one side and the Hosken camp, including Rosewarne and Polkinhorns by marriage, on the other; they would never agree. Years later, John Rosewarne described the family-controlled feudal company as an unholy alliance.

After eight years, Sam Hosken died of cholera and Richard Trevithick (Grandson of Richard Trevithick, the inventor) took over the chairmanship. He was the chairman from 1898 to 1914 when



BUSH MONKEY
GARDEN SERVICES

Keep it simple Keep it local !
Over 25 years experience with that personal touch.
Qualified and fully insured
Lawn care
Planting schemes
Weed & insect control
Tree hedge & shrub pruning
Garden maintenance & design
Decking Patios
Pressure washing Call Anthony for free no obligation quote or advice.
07825 881 078
bushmonkeygardenservices@yahoo.co.uk



HOSKING
ROOFING

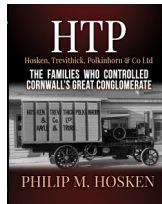
* GRP FLAT ROOFING * TILING
* SLATING * REPAIRS * NEW ROOFS
Tel 01736 758458
Mob 07909 943 098

he was deposed by the shareholders in 1914 and Samuel Polkinhorn became chairman.

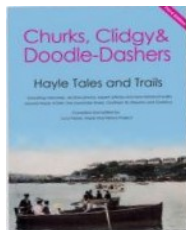
Of course, the full story of H.T.P. is much more complicated and revealing than the synopsis you have just read. Buoyed up by shareholders' cash and incredible borrowings, it continued until 1936 when Spillers bought the milling side and the trading name. It continued in the hands of the same Hayle-based families for a further 40 years as Farm Industries Ltd.

Hayle Heritage Centre collects any anecdotes or objects associated with Hayle. See www.hayleheritagecentre.org.uk for details. —

A new book on **H.T.P** by **Philip M. Hosken**, covering the Hoskens, Trevithicks and Polkinhorn's stories can be obtained at: www.htpbook.co.uk and at the Old Foundry Chapel bookshop.



A new 3rd Edition of the popular Hayle History book "**Churks, Clidgy & Doodle Dashers**" covering a wide range of local memories, including World War 2, Hayle Explosive's





CLOTHING & LIFESTYLE
The Old Foundry Chapel,
11 - 13 Chapel Terrace,
01736 755543



Shop online at
www.ula.online

»—————«

Follow us to keep up-to-date with events and special offers.

@ulaclothing

#SHOPLOCAL  

Works, Harvey & Co, J&F Pool and more.

Buy online exclusively at www.hayleheritagecentre.org.uk for £8.99 plus postage. Alternatively call 01736 757683 to arrange collection.

The police officer got out of his car as the kid who was stopped for speeding rolled down his window. 'I've been waiting for you all day,' the officer said. The kid replied, 'Yeah, well I got here as fast as I could.' When the cop finally stopped laughing, he sent the kid on his way without a ticket.

ANGOVE SPORTS

**COPPERHOUSE,
HAYLE.**

Tel(01736) 752238.

**For all sports equipment,
clothing, footwear
and fishing tackle.**

**Rackets repaired
and restrung.**



Are we Ever too Unfit to Take Up Exercise such as Cycling?

Well first of all, let's dispel the myth that to cycle you need to be one of those lycra-clad weekend road warriors.

Just a few years ago I would have fainted or broken into a cold sweat at the thought of getting on a bike and pedalling on the UK's roads...and allegedly for fun! But as a "middle of our years" type of person, taking up cycling has been more than just a means to roll back the years, it's been a life changing experience, reversing the descent into type-2 diabetes and ill health, giving me a new perspective and lease on life.

Even during times when motivation is low, or when it seems a bit cold or wet outside, within a few pedal strokes the sheer joy and sense of freedom reminds me of why I took up cycling as my journey to

JOHN POLLARD

**Cornwall Councillor
Hayle North**

To contact me:

[john.pollard@](mailto:john.pollard@cornwallcouncillors.org.uk)

cornwallcouncillors.org.uk

07967272808

Cornwall Council:
0300 1234 100



Hayle CYCLES

MOUNTAIN - ROAD - BMX SPECIALIST

Bicycle Sales and Repairs

Tel: 01736 753825

36 Penpol Terrace, Hayle TR27 4BQ
www.haylecycles.com

fitness and wellbeing. Looking back, when the opportunity for a career change arose, I created Cycle For Fitness, took my certification as a British Cycling coach and created programmes that are designed for people who would otherwise feel intimidated by the thought of cycling. People who would think it is too late in the day to take up a new hobby or they feel they are too unfit to start make a positive change. However, from my own testimony, it is never too late. If this resonates with you, if you would like to regain the kind fitness you naturally had in your twenties and thirties, if you enjoy

the feelings wellbeing, email me at grant@cycleforfitness.com. We are here for you, the first step in any journey is the hardest, take a deep breath, contact me for a free, no obligation chat.

*Grant Goodman
Founder and Coach
mobile : 07525765883
www.cycleforfitness.com*

How do you stay warm in an empty room?

Go and stand in the corner-it's always 90degrees.

JC ELECTRICAL

Your complete 24 hour Electrical Service

**Rewires • New Build • Lighting •
Showers • Extra Sockets • Heating**

City & Guilds Qualified (Tests to BS7671)

Part P registered

Prompt and reliable friendly service

Free estimates and all work guaranteed

Office: 01736 754543

Mobile: 07739 577549



Country Skittles

COVID-19 AND

TEMPORARY CLOSURE

With the latest COVID-19 restrictions adding to the already difficult operating conditions, we have decided to close until restrictions are eased, and we are able to get back to our normal business, i.e. large parties and family get-togethers. We are sorry to disappoint many of you, but it is just not viable for us to remain open at this difficult time for all of us.

However, we are looking forward to seeing you all back here as soon as possible and we will post here when we have more news.

We will still be monitoring any phone messages and emails, so please contact us with any enquiry.

We hope you all stay safe.

DIRECT TRANSPORT
Removals & Storage

LOCAL & NATIONWIDE
Full & Part Packing Service

Call for a free
competitive quote

Tel: 01736 603018
or 07476 223221

7 days personal service

Country Skittles

- Food
- Skittles
- Games
- Bar

**WE'RE ON
THE APP
STORES!**



just search for
Country Skittles!



OPENING TIMES

SCHOOL & BANK HOLIDAYS:

Mon to Sat 12-11pm Sun 12-10.30pm

ALL OTHER TIMES: Mon to Fri 6-11pm

Sat 12-11pm Sun 12-10.30pm

Townshend • Hayle • TR27 6ER

01736 850209

www.countryskittles.com

Join a Local Action Group and Ensure Funding Makes a Difference to Cornwall

Here at Community Led Local Development we ensure that all grant applications are assessed by a network of Local Action Groups (LAGs). These LAGs are made up of volunteers who are passionate about their local communities, have a high level of local expertise, and who work together to ensure EU funding reaches businesses and projects that will improve their local economy.

These local grassroots committees comprise of individuals from the public, private, and voluntary sectors, alongside those not affiliated to any organisation. Being such mixed groups, embedded in their local communities, the LAGs provide us with a breadth of local knowledge and independent views.

We are looking to recruit new members to each of our four LAGs to help move our goals forward. Our LAG meetings are taking place 'virtually' at present to ensure decisions continue to be made despite the Covid-19.

The main commitments would be attending a meeting once a month, reading and reviewing projects coming forward for funding to ensure they serve local needs, and helping to promote the CLLD



Specialist Building Surveyors

Asbestos Surveys
Buildings Surveys
Damp Diagnosis
Fire Risk Assessments
Timber Decay
Mundic Testing

Craig J Shepherd

BSc(hons) Building Surveying, CSRT

01736 752012

07890 528 312

info@cjshepherd.com

www.cjshepherd.com

Gabinetmakers & Joiners

JOHN ANDREWS

Windows, Doors & Staircases
constructed in soft wood and
hardwood.

Entrance gates

Fitted Furniture.

Restoration & repair work
including Boxframe windows.

Sash cords. Free estimates .

email:

johnandrews123@btinternet.com

www.johnandrewsjoinery.co.uk

Mob 07765 341616

tel 01736 755423

programme when you have the opportunity. Each LAG has a strategy for its work; you will find this plus more details about the programme and projects we have funded on our website communityledcornwall.co.uk

If you wish to join a LAG and could offer us a few hours a month, please give us a call on 01209 615067 and help us to help Cornwall!

My Memories of ... Starting School in 1953. Part 1

By Kath Shannon.



David N'jie
PAINTER & DECORATOR

07944 156995 01209 831397

dave.painter@hotmail.co.uk
Trethannas Cottage, Praze-an-Beeble
Camborne TR14 0LH



When I was five I started school. My sister, Rosemarie, who is six years older than me had gone to the local primary school just two streets away from where we lived, but my mother had decided that the school had certain deficiencies, primarily in the supplying of school dinners, to



We are delighted to announce our recent award of the Which Trusted Trader Scheme. We have been inspected by Which magazine and Ultraframe, the leading manufacturer of conservatory roof solutions, and passed with flying colours.

As well as carrying a wide range of PVC building products in our warehouse, our installation teams carry out work to the highest standard, giving you the peace of mind that comes with using a Which Trusted Trader.

I would like to thank the readers of Hayle Pump magazine for their continued support, as we serve the people of Hayle and beyond with the best PVC and Aluminum building products

Thank you
Nick and the WCPL team




- QUALITY SERVICE
- QUALITY INSTALLATION
- QUALITY PRODUCTS

INFO@WCPL.CO.UK
01736 759444
@WestCornwallPlastics







such an extent that halfway through her daughter's schooling she insisted on walking to the school each lunchtime carrying with her a 'nourishing hot meal' which completely mortified and embarrassed Rosemarie, already a sensitive and timid girl.

Hayle is a long town, a winding main street with a row of shops at each end, separated by terraces of houses on one side, quays and estuarine pool on the other. It's almost two villages in one town, one half named Copperhouse, in reference to the copper smelting works which was also an iron foundry, that was based there in the 18th and 19th century, and the other half named Foundry, because it was the site of Harvey's Foundry, also established in the 18th century. There's always been a bit of good natured rivalry between Copperhouse and Foundry, but in the eighteen hundreds it was very real animosity, with employees from the Copper Company and Harveys engaged in pitched battles as they fought to build safe harbours for their companies.

The school my mother decided to send me to was at the other end of town in Foundry and called St Joseph's. It consisted of two buildings, a small pink-washed cob cottage where the 'Little Ones' studied, and a long blue wooden building, home to the 'Big Ones.'



The Mad Hatter

Bed and Breakfast Open all Year !
Rooms overlooking Copperhouse Pool.

Full English breakfast.

Competitive rates.

*Relax with a Scrumptious Cream
Tea or Homemade Cake in the
Café or Tea garden.*

Open 10am-4pm

Monday to Sunday.

Closed Tuesdays.

73 Fore St Hayle TR27 4DX
01736 754241 07871 165 381

www.cornwall-online.co.uk/madhatter

paulinemadhatterbandb@outlook.com

Dogs welcome

SHIATSU

Acupuncture without needles

CHRISTIAN THELERMONT

Fellow of the Shiatsu Society UK (FWSS)

25 years practising

Gentle or deep tissue massage

Increases circulation and energy

Triggers own body healing
and immune system

Aligns body posture

Client stays fully clothed

christianthelermont@gmail.com

07949 938096

The two teachers were nuns, as the school belonged to and was sited near the local hospital, St Michael's, which was owned and superbly managed by the Daughters of the Cross. The pupils were mostly Catholic, but any denomination was welcomed.

St Michael's was situated at the top of a hill running out of Foundry, the school itself at the bottom of a long lane behind the hospital. It was about two miles from Copperhouse, where I lived behind the grocery shop owned by my parents, but my mother thought the distance worth the effort. At first I was given a lift every day by another parent and as I grew older would catch the

bus from Copperhouse to Foundry then walk up the hill to school.

The school was magical and I loved nearly every minute of being there, although at five years old, when I started, I wasn't to realise this.

On the second morning of my new school experience I was in the playground at breaktime. I don't remember feeling in any way upset or hurt, I simply felt that I'd 'done my time' as far as schooling was concerned, and it would be quite nice to go home, and so I opened the little picket gate, walked out, and started up the long winding lane towards the hospital.



Our practitioners are all highly qualified, covering chiropractic, chiropody/podiatry, sports massage, acupuncture, rehabilitation, aromatherapy massage, reflexology and yoga.

Foundry Square, Hayle, Cornwall
www.cornwallclinic.co.uk

Call today...
01736 759088



I passed through the hospital grounds without incident but as I started the downhill trek towards Foundry black clouds appeared and rain began. I wasn't wearing a coat and very soon became soaked as it was now henting (Cornish expression) down.

I reached Foundry Square, walked under the viaduct and passed by the long row of shops, then it was the mile long stretch of housing that divided Foundry from Copperhouse. Traffic was sparse in those days and due to the torrential downpour there weren't many people about, but of those that were abroad not one seemed to notice the small, sodden child plodding along the main road.

It must have taken three quarters of an hour to reach my parent's shop in Copperhouse. I remember my mother's consternation finding my dripping figure amid the customers, and then I was carried to the bathroom, put in the bath and a whole tin of Colman's Mustard Powder was poured into the water, turning it a bright almost fluorescent yellow. Apparently this would magically ward off any coughs or colds I may have caught from being so long exposed to the elements.

The hospital was contacted, whether the school had noticed my disappearance I don't know. There was no telephone at St Joseph's,



HAYLE DAY CARE CENTRE
Commercial Road, Hayle

An affordable day care facility for the elderly of Hayle, St Ives and district

Transport • Freshly cooked meals

Also includes bathing and hairdressing
Therapy and lively social interaction

Always a friendly welcome

Call 01736 755000

YOUR OLD TAPES ONTO CD



**YOUR OLD CASSETTE, REEL TO REEL TAPES OR
33/45/78 RPM RECORDS ALL
SAFLEY TRANSFERRED ONTO CD**

Your precious memories saved forever. Your own photos, information & dedications can be included on the CD/DVD cover.

Also now: old VHS video tapes & photos all onto DVD.

Digital Recording for Singers & Musicians, Songwriters, Poets, Story Tellers, etc.

Also Musical Backing Tracks provided.

**Contact Steve Nunn. 01209 719 481
www.cornmillstudio.co.uk
Email: cornmillstudio@aol.com**



Would you like to earn a £15 voucher?

Pi2Health.com is looking for people to undertake quality testing of pharmaceutical packaging and literature.

If you are interested email

Richard.Dryer@pi2health.com

Vouchers are valid for Asda, Amazon and Duckies in Hayle and others.

We do not sell anything nor pass on your personal information to anyone.

no secretary, St Michael's was the only go-between.

PART 2 NEXT ISSUE

Pi2Health Ltd (Pi2Health.com)

is a small company that carries out testing of packaging and information leaflets for pharmaceutical companies.

The test is normally around 25 questions, there are no time limits and you have the packaging or leaflet in front of you. At the end of the test you will receive a £15 voucher to spend. Open to anyone over the age of 18 who can read the back of a packet of tablets and provide constructive feedback.

All tests will be via Facetime / Zoom. (this is not open to nurses, doctors or pharmacists). Email Richard.Dryer@pi2Health.com for further information.



INDEPENDENT FAMILY FUNERAL DIRECTORS



- PRIVATE CHAPEL FOR SERVICES
- RELIGIOUS/NON RELIGIOUS WELCOME
- PRIVATE CHAPELS OF REST
- PRE PAID FUNERAL PLANS

TEL: 01736 447070 (24HRS)

www.saintsfunerals.co.uk

KING GEORGE V
MEMORIAL WALK,
PHILLACK,
HAYLE .



BARNOON
CHAPEL,
CLODGY VIEW,
ST IVES.



If you're struggling to find the inspiration for your daily exercise, Cornwall Hospice Care can help. The Cornish healthcare charity is launching three virtual challenges from a 37 mile walk you can do over a month to a half marathon that must be achieved in one run.

The Hospice to Hospice Virtual Challenge is aimed at all abilities and ages and runs from now until Sunday 21st February. The idea is to walk, jog or run the distance between Mount Edgcumbe Hospice in St Austell and St Julia's Hospice in Hayle, but somewhere local to home. The actual distance is 37 miles so that can be broken down to less than a mile a day! Entrants are being asked to record their activity and when finished to send proof in to receive a medal.

There are 2 other virtual exercise events organised by Cornwall Hospice Care which you can find the details of from www.cornwallhospicecare.co.uk



NAWT Take New Measures After National Rise in Dog Theft
The COVID 19

Pandemic has brought a lot of new and unknown things in to our lives. For us one of the biggest fears we have which has come from this is dog theft and the price of pets has soared. With only a certain number of reputable breeders in the UK, the market has been flooded with puppy farms and doggy dealers to keep up with this high demand, so high these puppy farms are making a lot of money This is why Lucy's Law is so



TP Wills & Probate.
Wills and Estate Planning Consultant.

"Where there is a will there is a way to protect your family"

- * **WILLS * TRUSTS**
- * **ADVICE FOR SENIOR CITIZENS**
- * **POWER OF ATTORNEY**
- * **PROBATE ADVICE**
- * **CARE FEE PROTECTION**

Call **Tim Poole**
01736 758418 or
07900 323939



Transformations Cornwall

*Give your home a luxurious finish.
Create the style you desire.
Bespoke curtains, blinds and soft furnishings.
Handmade to a high standard.
Professional friendly service.*

*Elizabeth Gregg
17 Penpol Road Hayle
TR27 4AD
01736 742434
elizabethmgregg@gmail.com
Www.facebook.com/
transformationsCornwall*



Magnus

important. Lucy's Law was brought in in April 2020 and enforces a ban on third party sales of puppies and kittens. This important change in the law will help put an end to the cruel puppy farm

trade and stop the needless suffering of countless animals across the country.

As a rescue centre this is a topic we are so passionate about. Short term we are attempting to fund the installation of security lights and cameras. In 2020 a number of organised raids have taken place all over the country at breeders, kennels and even boarding kennels resulting in incredible heartbreak, hence why

increased security is so an important .

Our staff are even now walking our dogs in pairs or even larger socially distanced groups as there are horrendous stories of dog walkers being punched in the face or knocked to the ground whilst their beloved pet is stolen in broad daylight.

NAWT's Pet Theft Awareness Pack has advice on how to prevent your dog from being stolen and what to do. If you are thinking of buying a dog, please avoid being part of this problem by making sure you are buying from a reputable source and not fuelling organised crime. NAWT's Puppy Buyer's Checklist will help you make the right decisions.

Finally, if you wish to help us fund the installation of security lights and cameras at our centres you can do so via the following donation link.

PASSMORE EDWARDS INSTITUTE 

MEETING ROOMS FOR HIRE

Hayle's Village Hall has rooms for meetings & activities for 2 to 60+ people

For more information:
WWW.HAYLE-PEI.ORG.UK
bookings@hayle-pei.org.uk
 Or call: 07895-601978

13-15 Hayle Terrace
 Hayle, TR27 4BU
 Charity Number 268429

PROPERTY MAINTENANCE

Painting
 Gardening
 Fencing/Sheds.

Experienced and reliable
 Competitive rates
 Contact
Simon Wells
07709 926 595
01736 754408
simonwells1466@gmail.com

Thank you for your continued support.
<https://www.nawt.org.uk/support-us/donate>

We are currently closed to the public due to the COVID-19 Pandemic. and the animals in our care cannot meet any potential new owners. but we can discuss the homing process with any prospective owners .NAWT Cornwall is an animal welfare charity that rescues and rehomes more than 200 homeless and abandoned Cornish animals every year. Their Facebook page offers regular updates of the rescue and rehoming process and the animals still waiting for a loving home. To view this, please visit <https://www.facebook.com/nawt.cornwall0>
For enquiries, please contact Amy

Hall (Fundraising and Supporter Relations Officer) by emailing a.hall@nawt.org.uk or calling 07736 971827.

All dogs and cats ready for adoption can be seen on their website www.nawt.org.uk
For any press and marketing enquiries, please contact Amy Hall (Fundraising and Supporter Relations Officer) by emailing a.hall@nawt.org.uk or calling 07736 971827.



TJ'S CARPETS LTD.



**New Showroom at Tolroy Garage,
58 Mellanear Road, Hayle TR27 6HF**

Come and see our wide selection of carpets & vinyls,
laminates and patterns

Our famous home selection service still available

Full range of flooring accessories

Call Now! 01736 757540 or 07976 608215

Free measuring & estimate service

“Before You Buy, Give Us A Try”

Quiz 154 It's All New

We haven't had anyone send in a hidden words quiz for this issue, but have had this one sent in by Simple Sadie, all the answers begin with the word NEW

1. 31st December 2020 is,,,,,,
2. 1st January 2021 is,,,,,,,,,
3. Some people say that this is the birth-place of jazz,,,,,,,,,,,,,
4. Is this the best place to buy brown ale? ,,,,,,,,,,
5. You can have a galloping good time here.....,,,,,
6. Is this where kiwis come from?
7. Reportedly so good it was named twice in a song.
8. Christian Dior surprised the fashion world with this in 1947.
9. What did President Roosevelt propose for the U.S.A. in the thirties?
10. They found a safe refuge in this place in East Sussex.
11. He played the partner of the Sundance Kid .in the movie.....
12. A fishing port in West Cornwall..
13. This U.S. state's capital is Santa Fe.
14. \ small amphibian...
15. This man was inspired by a falling apple

To win a prize of £20 please send your answers by **13th March 2021** along with your contact details to editor@haylepump.org.uk or use any of our drop-off points on page 2.

Answers to 'Creepy Crawlies Quiz in 153

- 1 Gnat 2. Beetle 3. Hornet
4. Flea 5. Moth 6. Ant
7. Earwig. 8.. Bee 9. Worm
10. Wasp 11. Aphid 12. Weevil
13. Locust 14. Fly 15 Slug.

The winner was Anna Pascoe

You are very welcome to send in a quiz on any theme of your choice.



DUE TO COVID, PLEASE CONTACT CLUBS TO CHECK ON THEIR LATEST DEVELOPMENTS

Club Listings

Bridge Club Every Mon. Carbis Bay Memorial Hall 2-5 pm £2 inc. tea & biscuits. Enq: Graham 01736 762512

Happy Art every Thurs Leedstown Village Hall 10.00-12noon. Emma Davies 01736 753596, 07384 583 004 emma@happy-paws.biz

Hayle in Bloom. Last Mon. of the month, (not Aug & Dec) Passmore Edwards Institute 7pm.

www.hayleinbloom.org.uk

Hayle Breezers Group Thursdays. 1.30pm Passmore Edwards Inst. April Hogarth 0781 376 7071

Bob Scales 01736 751735

Hayle Art Society Passmore Edwards Institute on Tues 1.30-3.30 & Wed 7.00-9.00 tel. Chris 01736 757720 or Penny 01736 756445

Hayle Christmas Lights last Thurs of every month (except Dec,) 7pm at Hayle Day Care Centre Annexe New volunteers are always welcome.

haylechrismaslights@gmail.com

Hayle Community Archive.

Open Tuesday & Thursday 10 a.m. – 1p.m.:Tel 01736 753962, email: haylearchive@haylearchive.org.uk

Hayle & District Bowling Club.

1.00pm every Wed Short Mat bowling indoors in winter 07766 662 908

Hayle Film Club. Films shown at 7.30 p.m. at Passmore Edwards Institute. Donna 01736 753184.

www.haylefilmclub.org.uk

Hayle Friends Group for CHSW

Hospice meets informally once a month under the chairmanship of Mary Trevarthen 01736754342 trevarthenmv@uwvclub.net

Hayle Guitar Club Wednesdays

7p.m.-9.30p.m. Passmore Edwards In
Hayle Harbour Users Association 1st Mon, of each month, 7.30pm.

Royal Standard Pub
R Lello 01736 757632

Hayle Judo Kwai Unit 7 Rospeath Industrial Estate, Crowlas. Tues & Thurs. Sensei Richard 01736 740723 or Karen Deacon 0779 209 9979

Hayle Library Reading Group. 2.pm first Wed. of each month .

Hayle & District Lions Club. 2nd and 4th Tuesday of every month, 7.30pm at Passmore Edwards Inst. Secretary Yvonne Watson 01736 741375

yvonnemystique@hotmail.com

Hayle Lawn Tennis All ages and abilities welcome. Tremeadow Terrace, Hayle 01736 850843

www.haylelawntennisclub.co.uk

Hayle Local Vocalz Mondays 7.45pm, Passmore Edwards Institute 07446 492266

Hayle Memory Café 1st & 3rd Mondays 2-4pm at Hayle Rugby Club Christine 07513 221066

Hayle Model Boat Club. Weds. 7-9pm & Sunday mornings 10-12 noon, meeting at green chalet by Hayle swimming pool. 01736 755516, or Les on 01736 754254

Hayle Model Railway Club & Duchy Railroaders Club Rooms Unit 5, Praze Business Park, Praze-an-Beeble. Mon. & Thurs. 7pm – 9.30pm. Bob Mims 01736 757910

bobmims@live.co.uk

Hayle Meanderers Every Wed.10.30am Commercial Road car park. Free, + contribution to carshare. Eddie Downing 01736 364673

Hayle Old Cornwall Society. First Friday of each month. Oct, to May at Hayle Day Care Centre 7.30p.m. Trevor Smitheram 01736 756793

Hayle Nutty Knitters Thursday 1pm
at Cornish Arms 01736 762418

Hayle Penwith U3A at Hayle Day
Care Centre

Chair Mike Stuckey 01736 753755

Hayle Pilot Gig Rowing Club.

Rowing out of Hayle Harbour most
Tuesdays and Thursday evenings
chair@haylegigclub.co.uk

Hayle RNLI meets from March to
November at 7.00pm the 2nd Wed. of
the month at Unit 5 Hayle Industrial
Park. Tel 01736 753567

Hayle Surf Life Saving Club Riviere
Towans Hayle TR27 5AF Captain:
Dave Parker 01736 755303

Heyl St Piran Singers Every
Wednesday at St Erth Old School
Room 7.30 to 9.30pm Ann Thomson
01736 752335

Hayle Twinning Association

Communicating on zoom during the
Covid crisis. Contact George Daniel
01736 333236 or email
penelope.young@btinternet.com

Heyl Town Band Rehearsals Tues &
Thurs 7:30pm-9:30pm, Juniors on
Thursdays 6:pm-7:00pm

Macmillan Cancer Support Meet at
Three Trees, 16 Penmare Terrace,
Hayle on most Thursdays at 7.30pm
Suzanne Benney 01736 753635

One & All Choir (mixed) Fri. 2-4 £1per
session Ann Thomson 01736 752335

**Penwith Guild of Weavers Spinners
& Dyers** 3rd Sun of mth (not March)
1-5pm Passmore Edwards Institute
01736 762418

Phillack Tower Bellringing every
Tuesday at 7.30pm - Tina Morgan
01736 756567

Royal British Legion Passmore
Edwards Institute. Every Mon. Wed. &
Friday evening and Sat. afternoon.
Mr Alan Conquest 07470 308400

Save Our Sand For date and venue
of meeting, go to www.sos-hayle.org.uk. Or visit Facebook. To go

on our mailing list contact
saveoursand@talktalk.net

Scrabble Club at Connor Downs 2nd
Thurs each month at W.I.Hall. 2-4pm £2
for hall & refreshments .

carolinewindsor123@btinternet.com

**Shore Surf Ladies Only & Juniors
Surf Club** All abilities

welcome. Every Saturday 9 – 11am.
01736 755556 Beachline 07855 [755556
info@shoresurf.com](mailto:755556info@shoresurf.com)

St Erth Concert Band Rehearsals
Tues.7.30 to 9.30pm in Methodist Ch.
Hall st,erthcb.enquiries@gmail.com
www.sterthconcertband.co.uk

St Ives Camera Club Monday 7.30pm
at St Anta Church Hall, Carbis Bay
stivescameraclub.co.uk

St Ives and Hayle Community Choir
Tuesdays 1.30pm to 3.00pm at St Anta
Church Hall, Carbis Bay 07446 492266

Stroke Community Café 2nd Tuesday
of month. 10am Dobbies (Wyevale)
Garden Centre Café
simon.eastment@stroke.org.com

Table Tennis for Fun, every Friday at
2pm at Hayle Methodist Church Hall,
John Nunn 01736 759686

**The Cast Theatrical Performance
Group** Every Wed 7.00pm St Erth
Methodist Hall

West Cornwall Concert Band
Monday 7-9pm at Camborne Wesley
Church – Please email Becky
Lovegrove at

westcornwallconcertband@gmail.com
W.I. Hayle 1st Tuesday of the month,
7.00 pm at Hayle Rugby Club
Margaret Stockton 01736 756007

**To appear on this page free of
charge drop in details to: Angove
Sports, Passmore Edwards Inst.
The Farm Shop or email
editor@haylepump.org.uk**

To book Phillack Church Hall please
contact: Tracey Worrall 07490 691120

- | | | |
|--------------------------|----------------------------------|-------------------------|
| 2 1st Choice Paving | 13 Flowertime | 36 Saints Funeral |
| 8 A. McDonald | 6 Grafters | 22 Seymour and Jago |
| 16 All Aerials | 4 Happy Feet | 33 Shiatsu |
| 28 Angove Sports | 28 Hayle Cycles | 9 Sweet Williams |
| 11 Bespoke Framing | 35 Hayle Day Care | 28 T. Hosking Roofing |
| 12 Big Pink Tree | 15 Jake's Mobile | 23 Thurstan Hoskin |
| 22 Biz and Bytes | 28 J C Electrical | 39 T J Carpets |
| 3 Brett & Leni | 31 John Andrews | 37 T P Wills |
| 26 Bush Monkey | 28 John Pollard | 37 Transformations |
| 19 Cafe Riviere | 5 Julia Woodhams | 27 ULA Clothing |
| 21 Chimney Sweep | 15 Kinsei | 20 Webb & Philp |
| 31 CJS (Craig Shepherd) | 17 Lawn Ranger | 32 W. Cornwall Plastics |
| 15 Cliffords Plumbing | 7 Lewy's Fish & Chips | 43 Winns Funeral |
| 23 Copperhouse Clinic | 10 Little Plumbing Jobs | 19 Zip Inn |
| 35 Cornmill Studio | 33 Mad Hatter | |
| 34 Cornwall Chiro Clinic | 24 Malt Decorators | |
| 30 Country Skittles | 12 Mobile Foot Clinic | |
| 22 CVC Solicitors | 7 Mr B's | |
| 9 Dapper Dogs | 25 M W Carpentry | |
| 19 Dave Thomson | 38 Passmore Edwards | |
| 32 David N'jie | 11 Paul Sherris | |
| 18 Des Button | 36 Pi Health | |
| 30 Direct Transport | 3 Plantech | |
| 10 Drecklys | 16 Philps | |
| 14 Farm Shop | 38 Property Maintenance | |

**Pick up points in bold.
Copperhouse P.Office.
Warrens at Foundry,
McColls, Hampsons, Old
Foundry Chapel,
Spar,
Farm Shop, Lewy's Fish
and Chip**



W J WINN FUNERAL DIRECTORS



We are here to help you 24 hours a day

- Funeral Pre-Payment Plans • Memorials • Private Chapels of Rest

WJ WINN

Trenwith Terrace
St Ives TR26 1QE

Tel: 01736 793029

WJ WINN

69 Fore Street
Hayle TR27 4DX

Tel: 01736 752124

CHARLES BRYANT & MARAZION FUNERAL SERVICE

North Road, Goldsithney, Cornwall TR20 9JY

Tel: 01736 710318



Part of Dignity plc. A British Company



Bodriggy Surgery

News



Following extensive trials, 2 safe and effective vaccines for COVID-19 have been approved by regulators and are now being made available to us and are supplied to us in batches each week.

The Joint Committee on Vaccination and Immunisation (JCVI) has said that both the Pfizer/BioNTech and the Oxford/AstraZeneca vaccine 'give very high protection against severe disease' and both have good safety records. Both vaccines are being used across the county.

The NHS continues to prioritise those that the Joint Committee on Vaccination and Immunisation (JCVI) and the government has decided will benefit the most – specifically the over-80s, care home residents and all frontline health and care staff. We are inviting people for vaccination in order of the priorities set out by the JCVI, starting with over 80s.

Please do not contact us about the COVID-19 vaccination unless we have already contacted you. When we do contact you, please attend your booked appointments with us. Everyone at the practice is working extremely hard to make sure people receive their COVID-19 vaccine as quickly as possible. Please be patient with us during this time - we are working hard to vaccinate as quickly as possible using the supplies that we receive.

On days where GPs, nurses and other staff are supporting the roll-out of the COVID19 vaccination programme, some routine appointments may be rescheduled to an alternative day or an alternative GP Practice within East Penwith. Urgent GP appointments will still be available, and patients will be seen if it is deemed appropriate.

More COVID-19 vaccination clinics are being made available all the time – everyone who is eligible according to national guidance will receive the vaccine in due course. Hands, Face, Space remains key – even once people have been vaccinated. You can get more information about the COVID-19 Vaccination online via the NHS website.