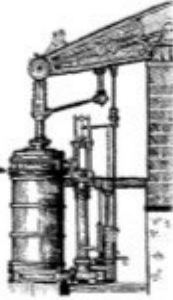




Issue 159
Dec/Jan
2022



HAYLE PUMP NEWSLETTER

OUR THANKS TO A DEDICATED TEAM FOR LIGHTING UP HAYLE FOR EVERYONE



Sarah, Penny, Keith, Chris, Patrick, Barry & Sam.
Missing from the picture are Colin & Martin

Donations always welcome!

Free! thanks to our volunteers and
advertisers.



Hayle Pump Newsletter

Passmore Edwards Institute, 13-15 Hayle Terrace TR27 4BU

The Pump is produced by volunteers as a community newsletter.

NB All articles accepted are not necessarily the view of the editorial team.

View online at www.haylepump.org.uk

Editorial team contact

editor@haylepump.org.uk

Web site

John Bennett

webmaster@haylepump.org.uk

Team Members

Tina Morgan (Subscriptions)

Claire Sheppard (Treasurer)

Stephen Murley (Editor)

Subscriptions

Tina Morgan

Phone: 01736 756567

For 6 issues by post, please send a cheque or postal order for £4.30 made out to **Mrs T. Morgan** and send to **Mrs T Morgan, 29 Bodriggy St., Hayle, TR27 4NB**

Please give your name and number as well as the delivery

NEXT ISSUE

December/January 2022

Send any articles or copy to:

- editor@haylepump.org.uk

or drop off at:

Angove Sports (Copperhouse

The Farm Shop (Foundry)

Passmore Edwards Institute

Advertising

Jeff Turk

Phone: 01736 752319

Send your adverts to:

ads@haylepump.org.uk

or use the drop off points.

Advertising Rates:

1/8	63 x 47.5	£10
1/4	63 x 95	£15
1/2	NA	

**NEXT DEADLINE is 13th
Jan 2022**

1st CHOICE PAVING

Drives, patios, paths, landscaping, resin bound aggregates and artificial grass.

01736 753087 07969 960128

www.1stchoice-paving.co.uk





MAYOR'S CHRISTMAS MESSAGE

As we near the end of another year, I am pleased to be able to bring you this message. After enduring a very challenging couple of years, we can, with the success of vaccine roll outs, hopefully be more optimistic as we celebrate Christmas, the New Year and move into 2022.

Following the elections and when I became Mayor, in May 2021, we have seen the continued lifting of the Covid-19 restrictions, the G7 summit held in Carbis Bay with world leaders and their entourages taking over the area and, after a 12-month delay, the first stage of the Tour of Britain cycle race pass through Hayle. Due to travel restrictions when going abroad, we also saw a massive influx of holiday makers to the area, this causing fear and apprehension for some, but because of the previous restrictions that had been in place where businesses have not been able to trade properly, it brought great relief as they were allowed to trade once more.

We are still seeing Covid rates rise and fall, sometimes going

above the National average and indeed as I write these words, I am having to self-isolate following the display of Covid symptoms and testing positive for the virus. With this in mind, and echoing the words of our NHS and the scientists, we must continue to take care, respecting each other, Hands – Face – Space and if you have not already done so, I would encourage you to get vaccinated to protect you, your loved ones, and the people around you. Further by-elections in October have now seen all but one of our Council seats filled; it is great to see a diverse selection of councillors and the value that they all bring in representing our community.



PLANTECH
GARDEN SERVICES

EST 2006

Lawns & Hedges Cut
Tree & Shrub
Pruning ,
Lawn Care
Treatment Services
Gardens Cleared

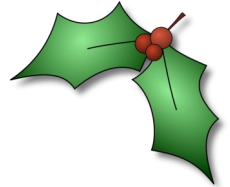
Free no obligation quotes

Mob: 07979 546434
Tel: 01736 754401

I want to pay tribute to the commitment of our councillors and council staff. They have continued to provide services to the community through these challenging times. Thanks to our town clerk and her team, our library team, swimming pool team, our gardeners and maintenance team. As we enter the winter months, we need to keep reaching out to help those around us and supporting each other as best we can – our family, friends, neighbours, and others. However we choose to celebrate the festivities, in many respects, caring and supporting each other is the true spirit of Christmas. On behalf of Suzanne and myself,

along with all at Hayle Town Council, I would like to wish everyone a very Merry Christmas and a Happy New Year.

Steve Benney,
Mayor



Hayle Christmas Lights 2021

The lights were switched on at the Day Care Centre on Friday 26th November at 6:30pm. This event as in 2019, was in conjunction with the Carnival Committee who organise the lantern parade.

Mike Thornton

Plumbing & Heating
Services Breakdown,
Servicing & Repairs to all
makes of boilers

01736 740965

07704 244 376

m.c.thornton8@btinternet
.com



Hayle Christmas Lights

would like to say thank you to the



for giving Copperhouse this fantastic
Christmas tree and lights for everyone
in Hayle.

Helping us to keep Hayle bright at
Christmas.

As the lights go on, from 4:30pm each evening, you will see new lights in Copperhouse, at the Day Care Centre and further along Penpol Terrace towards Philips. Our thanks to Corinthian at North Quay for providing and installing these new lighting supports at Penpol Terrace – it saved a lot of us older volunteers from doing the back breaking work of digging out the foundations and erecting the poles, in this difficult area, right on the edge of the harbour. This year there is also a second tree, this one at Copperhouse, thanks to the support we have had from the Hayle Pump. We have also added a display on the library which shows our appreciation for the long term support of Hayle Town Council. Covid has continued to cause us many problems with everything having to be sorted by a small group of people who have not only maintained, tested and improved the lights but also have put up the many lights around Hayle during late October/ November. Our thanks to all these volunteers. All of this work has only been made possible thanks to the generous support we have had from individuals & businesses in Hayle, and from Hayle Town Council. See our Facebook page at <https://www.facebook.com/groups/haylechristmaslights> for our thanks to many of these donors.

Julia Woodhams

MAR: MIGHT: MBRCP

COMPLEMENTARY
THERAPY PRACTITIONER

Aromatherapy, Reflexology,
Reiki Healing, Indian Head
Massage, Hot Stone Massage
and Aromatherapy
Facials with organic
oils.



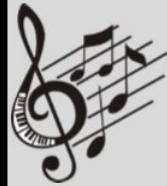
For appointment or
enquiries

Ph: 07960 181497

01736 603397

Email: roo61@hotmail.co.uk

Gift Vouchers available.



Move that
Body to
Music

Classes for 60s Plus

Classes held in a socially
distanced safe environment

**Thursdays at Hayle
Rugby Club at 10.30 am**

£5.00 a session

Phone Sylvia on

01736 757560

for more info

As we expand the lights storage has become an issue with more and more lights, trees and frames being put up in Hayle. Therefore next year, one of our priorities will be to finance a second container to allow us to store and work on the lights from January to November. Covid again has caused issues here, with fewer containers available, prices have increased dramatically. It is vital that we get a secure, weatherproof unit – if you know of any for sale in the area, at a reasonable price, please let us know (contact details below).

We are always looking to improve the lights, if you have

suggestions or if you would like to help out in fund raising, installing the lights or in any other capacity please contact haylechrismaslights@gmail.com or contact Patrick on 07787 962001. Alternatively go along to our Facebook page where you can join and offer to help.

You don't need a parachute to jump out of an aeroplane. You do need a parachute if you plan to do it twice.

Council Corner



December 2021 & January 2022

Town Councillors

Following the recent bi-elections to fill the vacant seats, we welcomed seven new councillors at the beginning of October and the council is pleased to have a broad section of the local community represented.

Vacancies

Unfortunately, one of the recently elected members has already resigned due to other commitments and there remained one vacancy in the recent bi-election so we currently have two vacancies in the West Ward.

As long as you are eighteen or

Copperhouse Jewellers
& Engravers



JEWELLERY REPAIRS
SECONDHAND GOLD BOUGHT
AND SOLD
WATCH BATTERIES £5 FITTED!
TROPHIES & MEDALS
ON SITE ENGRAVING

NOW OFFERING KEY CUTTING
CUT WHILE YOU WAIT FROM
£3.50



61 Fore Street, Hayle
TR27 4DU
-01736 753203-

over you can become a town councillor, which is a voluntary role. If you have a few hours a week to give to your town, please consider standing for election. Having people of different ages and from a variety of backgrounds can lead to more informed decisions, which are based on real life experience, and it ensures



BLEWETTS
TOY SHOP
 19 Penpol Terrace Hayle
 TR27 4BQ
 01736 753012

that the Council better reflects their local community. The role of Towns and Parish Councils is growing. As a result of devolution, they have more powers and can consider preserving and taking on more services from Cornwall Council. You would be involved in making important decisions which directly benefit your town.

Town Team

We've only been established a few months and have already have some interesting ideas that we're working on, such as a Repair Shop, Farmers Market, street entertainment and other town events, and in addition to



**The Oldest
Chippy in
Hayle!**
 Opening hours

Sunday — Monday: Closed
 Tuesday: 4.30—8
 Wednesday: 12-2 / 4.30—8
 Thursday: 12-2 / 4.30—8
 Friday: 12-2 / 4.30—8
 Saturday: 12-2 / 4.30—8

We have a 5* Hygiene rating

See us on  @Lewy's Fish & Chips

01736 759381

48 Penpol Terr Hayle TR27 4BQ



**DAVE
THOMSON**
**DECORATING
INTERIOR &
EXTERIOR.**
FREE QUOTATIONS
TEL 07518 136 730
01736 754647
Dave.thomson2013
@hotmail.co.com

The Gallery Coffee Bar
Always welcoming and friendly



*You can sit in the
fresh air in our
lovely sunny
courtyard,*

or

*relax on a comfy sofa
with great coffee,
home-made cakes,
breakfast and light lunches.*



1 Chapel Terrace Hayle (by the
Viaduct) ...**See you soon**

07765 229 764

**Dogs (and well behaved owners)
are welcome**

**Sweet William
Florist**



**.....for the personal
touch.**

07928 100 690

01736 740 644

www.sweetwilliams.com

this we have been successful in securing funding, from the Vitality and Welcome Back Funds, to progress these and other initiatives.

The Town Team meets virtually (via Zoom) on the first Wednesday of each month at 7pm and it is open to all. The group is made up of local businesses, community groups and residents of Hayle, and it welcomes ideas, discussion and opinions that will help Hayle, both now and in the future. Absolutely everyone is welcome to attend.

If there is anything that you would like to be discussed at the meeting, just contact the council office at info@hayletowncouncil.net and it will be added to the agenda.

A zoom link to attend is published on our Facebook page with the link so anyone can attend and have their say. Further information can be found on the website on the Town Team Information Documents and Links page.

Skatebowl

The need to update the Skatebowl was recently highlighted by a young local skater who contacted the council direct to ask for improvements to be considered by members. A presentation of the options was received by the amenities



committee and the discussion formulated an idea for them to form a working group including the Community Link Officer, representatives of the Emergency Services and potentially Hayle Youth Project. The committee resolved to support and help with this project.

Council Activity and Meetings

Despite the continuing challenges that Covid-19 has presented this year, the Council continues to function and deliver its services. Meetings have returned to being held in person, although we now meet at Hayle Day Care Centre to maintain social distancing and to cater for members of the public to attend.

Unfortunately, Civic and charity events such as the Mayor Choosing Ceremony, Civic Service and Parade and the Mayor's fundraising events have all been cancelled again this year as a direct result of the pandemic, but plans are afoot for 2022.

Budget and Precept

It is that time of year when the Council sets the budgets and precept for the financial year 2022-2023. There is now so much to consider, due to the ever-increasing number of services that the Town Council provides, that several meetings are required to debate the financial

ALEXANDER McDONALD

Gutter clearing and fascia board cleaning. Painting, pressure washing, gardening services. Also Fencing and Fence repairs and all those little jobs you keep putting off. Free estimates.

Big enough to cope, but small enough to care!



Mob 07880 777 591

Home 01736 753102

implications for the services and facilities for the forthcoming year.

Christmas

As in previous years, Cornwall Council is offering free parking in the town's car parks on Saturday 4 December. Make sure that you take advantage of this and support our town by shopping in our fantastic local businesses.

The town council services will close on Thursday 24 December 2021 but continue to operate on the working days between Christmas and New Year, i.e., Wednesday 29 - Friday 31 December 2021 inclusive, albeit



HYDRO BATH **BLOW DRY**
BRUSHING **NAIL CARE**
EAR/EYE CARE **FLEA TREATMENT**
DEODORIZE **CLIPPING.**
ALL NATURAL PRODUCTS.

PH 07903 042950

Lesley 01736 850971

E-mail lesleyandkeith@msn.com

City of Guilds Trained

on a reduced level. Full and normal service will resume on Tuesday 4 January 2022. Any issues relating to the public conveniences or open spaces should be reported to the town council in the normal way but during Bank Holidays or out of normal office hours please contact CORMAC via 0300 1234 100 or 0300 1234 222.

The library will close at 1pm on Christmas Eve and will be open on Wednesday 29 and Friday 31 December and again close at 1.00pm. The library will re-open as normal from Wednesday 5 January 2022.

Please keep an eye on the website and Facebook pages for any updates

Hayle Methodist Church
wishes everyone a peaceful and healthy Christmas.



Special Christmas Services

Dec 5th 3:30pm Messy Church

Dec 19th 4pm Family Carol Service and Christingle

Christmas Eve Communion 11:15pm

No service on Christmas Day or Boxing Day

*Everything subject to possible Covid changes!
Please check websites for details.*

www.haylemethodist.co.uk

f [Haylemethodistchurch](https://www.facebook.com/Haylemethodistchurch)

Rev. Ray Borrett 01736 754583

Hayle Town Council
Hayle Community Centre
58 Queensway

Hayle
TR27 4NX
01736 755005

info@hayletowncouncil.net

www.hayletowncouncil.net

Office hours 9.30am – 12.30 p.m.

A bloke on a tractor has just driven past me shouting "The end of the world is nigh!" I think it was Farmer Geddon.



shutterstock · 65575198

CHRISTMAS SERVICES
WITHIN THE GODREY
TEAM OF CHURCHES.

Sunday 12 December

9.30am St. Erth – Christingle

11am Gwinear - Carols

Sunday 19 December

9.15am Phillack – Carols

11am - Gwinear – Carols

6pm St. Erth - Carols

Sunday 24th December -
Christmas Eve

9.30pm Phillack - Holy
Communion

9.30pm Gwinear - Holy
Communion

11.30pm St. Elwyn's - Midnight
Mass

11.30pm St. Erth - Holy
Communion

Sunday 25th December -
Christmas Day

9.15am Phillack - Holy
Communion

9.30am St. Erth - Holy
Communion

11am Gwithian - Holy
Communion

**Bespoke
Picture
Framing**



Paintings,
Photographs
Textiles, Canvas
Cross-stitch, Memorabilia,
Conservation
Mobile Service offered
Tel: **07502 392 839**
www.itsallintheframe.co.uk
gilly@itsallintheframe

GillyHooper
32 Chenhalls Road,
St Erth
TR27 6HJ.

**PAUL
SHERRIS**

Hayle's only
local family owned
**FUNERAL
DIRECTOR**
Private Chapel of Rest
Pre-Payment Plans
available
West Terrace, Hayle.
TR27 4JS.
01736 753969
Day or night

WEST CORNWALL MOBILE FOOT CLINIC

For the professional treatment
of:

Corns & Callus Diabetics
Verrucas Athletes Foot
Thickened Nails
Fungal Infections
Ingrowing Toe
Nails
Cut-trim Nails



All in the

comfort of your own home

Peter Williams

S.A.C.Dip FHPT/FHPP

07901 803493

Evening & weekend calls
available.

pwpetewilliams@googlemail.com

WHAT DO YOU REALLY KNOW ABOUT CHRISTMAS?

- 1 Name the town where Jesus was born.
- 2 Name the mother of Jesus.
- 3 What time of year was Jesus born?
- 4 Where was the manger where the baby Jesus was laid?
- 5 How many kings came to see Jesus?
- 6 Where did the men come from?
- 7 How did they know where to look for a new king?
- 8 Where did they find him?
- 9 What does the name Jesus mean?
- 10 Why do we have Christmas trees?
- 11 What is Santa's real name?
- 12 What is his feast (special) day?

Don't forget: Christmas is a Christian festival and means 'Christ's Mass'. *Christ* is a title for Jesus and means 'anointed'

Have a wonderful celebration of his birth. This is what the real festive season is all about.

The person with the most correct answers will win a £20 voucher to be spent at The Big Pink Tree.

Send your answers to the editor@haylepump.org.uk or use any of the drop-off points on page 2 by 13th January 2022

Send Flowers
to Say
Happy
Christmas

FlowerTime @ The Big Pink Tree
01736 757006
www.wesendflowers.co.uk

your local Hayle Florist

We Have Mail !!!



The Hayle Fun Day

this year was a great success and the interest shown in our Free fun and Prizes for all stall was amazing. By 1.30 pm we had 103 participants and gave away 90 free prizes but sadly we had to pack up at 2pm because we had no more prizes to give away.

We would like to apologise to the many adults and children who came to visit our stall after 2pm but promise next time to be fully prepared. Sorry again.



We will be playing fun board games on the first Sunday of each month starting at 2.30 pm Adults

only. Places are limited please book your visit.

Contact Robin Phillips Hayle Old Boy at **5b Gwel Trencrom** Hayle. Telephone **07974884654**. Thank you.

Robin Phillips, Hayle Old Boy and Pam.

To our wonderful gardeners and helpers: We would like to thank and wish all our volunteers a peaceful Christmas and New Year, hope to see you all gardening in 2022.

Thanks ,Olivia

Dear sir, I would like to say that my thanks are wholehearted to Charlie of Hayle for finding and returning my mobile phone today after I dropped it on King



Transformations Cornwall

Give your home a luxurious finish.

Create the style you desire.

Bespoke curtains, blinds and soft furnishings.

Handmade to a high standard.

Professional friendly service.

Elizabeth Gregg

17 Penpol Road Hayle

TR27 4AD

01736 752434

elizabethmgregg@gmail.com

[www.facebook.com/](http://www.facebook.com/transformationsCornwall)

transformationsCornwall

Looking for Gifts & Cards
for Christmas?

Then pop into
The Big Pink Tree
on
Penpol Terrace

Your local Gift & Flower Shop

www.thebigpinktree.co.uk

www.wesendflowers.co.uk

01736 757006

George V Memorial Walk.

Charlie - your efforts to locate me and return the phone are much appreciated; your efforts included talking to my jolly sister and occasionally brusque husband. But your efforts were effective. We are living in such challenging times, and I find your kindness more significant than my phone. - That said I would now be in chaos without the phone.

As much as I enjoyed the walk, the late afternoon light; the birds on the estuary and early autumnal flowers, I was more uplifted by your kindness and good citizenship. With my wholehearted thanks, Estelle.

(Just in case Charlie doesn't read the Hayle Pump, I hope some readers

may recognise the young man and others will enjoy the recognition of good community).

Dear Sir,

does anyone out there know what - if anything-is going on at North Quay?

On recent walks there I noticed that the intense construction activity of earlier months has now reduced considerably, The cranes stand idle; power seems to come from generators; the so called "luxury flats, (which in my opinion would not look out of place in an Inner City housing estate), are open to wind and rain, and the waterfront is a tangled mess of wire fences and rusting pipes. All this against a backdrop of a scoured sandy wasteland. This could all be excused as work in progress except I have recently seen little sign of progress. I tried to find out what is happening by contacting a number of town and county councillors: several of whom had been enthusiastic backers of this grandiose scheme at the outset. I received only one reply and that from a councillor so vehement in his condemnation of the current situation I am loathe to quote him here. What am I to make of the silence of the others? Do they know as little as I do or do they feel it is none of my business?

I I would suggest it is the business of all Hayle residents; many of whom are fearful of the impact of this project in a number of ways. For example, how will the narrow and constricted approach roads cope with the surge in traffic and how will our already overstretched schools and surgeries mange the demands

PROPERTY MAINTENANCE

Painting

Gardening

Fencing/Sheds.

Experienced and reliable

Competitive rates

Contact

Simon Wells

07709 926 595

01736 754408

simonwells1466@gmail.com

of thousands of new residents?
 These are legitimate concerns but
 the silence from the Council is
 deafening. Perhaps they do have a
 Master Plan and if so it would be
 greatly appreciated if they could
 share it with the rest of us. Otherwise
 we are asked to confront a
 situation_bizarre even by its own
 standards- that Cornwall Council has
 presided over a project to demolish
 one derelict industrial site only to
 replace it with another!
 D, Jones

I went to B & Q and bought a fly
 spray,
 I asked the assistant "Is this good
 for wasps?"
 He said "No, it will kill them."

Bodriggy Health Centre News

Covid boosters- We are making
 excellent progress with our Covid-19
 booster programme, if you are due
 your booster vaccine, which should
 be six months post second vaccine,
 and you haven't yet been contacted,
 missed your appointment or are
 unsure when you are due, please
 contact the surgery to speak to one
 of the team. As our phone lines are
 very busy, particularly on a Monday,
 we would ask that you call mid-week,
 or between 1700 & 1800.

Bodriggy Health Centre would like
 to say a big thank you to all their
 patients for their cooperation whilst
 attending flu & Covid vaccine clinics,
 they have so far been a great



*We are a Pre-loved Boutique
 selling an extensive range of
 quality label clothing, shoes and
 accessories. Buying and selling on
 commission is easy and we are on
 hand to book in your clothes, bags
 and accessories. Make money on
 your once cherished garments, it's
 so easy.*

**1 Chapel Terrace Hayle TR27 4AB
 (by the viaduct)
 07765 229 764**



Need a
 Plumber?



**From a dripping tap to a
 complete bathroom**

We have a new phone number

01736 752955

07761938183

cliffords4@btinternet.com

 Cliffords plumbing and bathrooms





Greek Food delivery service to
Hayle, St Erth, Connor Downs, Lelant radius
A traditional culinary experience just
like in Greece. Producing luscious
dishes with a respect for
traditional flavours

Craving proper Greek Gyros?
here is the place to find it !

Pork Gyros - Chicken Gyros - Moussaka
Kleftiko - Gemista - Baklava
and many more Greek delicacies !

Find our menu on Facebook/ProperGreek

or give us a call on **07983179990**

 propergreek  @proper_greek

success!- The clinics would not be possible without our fantastic team of volunteer staff which include vaccinators, traffic Marshalls & administrative staff, our own staff have worked incredibly hard to ensure we continue to offer the best service to our patients whilst running the winter vaccination programme.

With winter fast approaching and many new viruses around we are extremely busy, we appreciate our phone lines are always very busy & patients can find this frustrating, we are looking into ways to help improve this, however there are a few things that patients can do to help with this :

1. Only call the surgery on Mondays if you have an urgent problem that cannot wait until the following days. Mondays are always very busy!

2. Email the surgery if you have simple enquiries:

enquiries.bodriggy@nhs.net

3. Use e-consult, which can be found on our website

www.bodriggysurgery.co.uk

4. Use 119 for covid vaccine & covid passport enquiries.

5. Make use of the pharmacy minor ailment scheme and use their pharmacists expertise for any medication queries.

6. Sign up to Patient Access or the NHS app to order your medication, view your covid passport & much more. Our staff are happy to help you with this. Thank you for your cooperation.

ALL AERIALS

TV Aerial & Satellite TV Specialists.

digital 

Registered Digital
Installer



25 Years Experience

For all aspects of Tv Aerials,
Satellite Systems Fixed &
Motorised, Installations &
Repairs

Free Friendly Expert Advice By
Local Engineer.

Tel : 01736 759225

Mobile : 07979503907

Email. jonathan@allaerials.co.uk



* GRP FLAT ROOFING * TILING
* SLATING * REPAIRS * NEW ROOFS

Tel 01736 758458
Mob 07909 943 098

HAYLE AMATEUR DRAMATICS SOCIETY..... TREADING THE BOARDS ONCE AGAIN.

HADS was originally formed back in the 1990s and performed its last production of Aladdin in 2003 after losing its venue in St Elwyns Church Hall when the stage was removed. We are now back with our new production. Once again, of Aladdin, with one or two changes. We will be performing three shows in the Hayle Day Centre from the **28th-30th December at 7.30pm** and another three in the **Hayle Rugby Club on the 7th and 8th of January at 7.30pm with a matinee on the 8th at 2.00pm.** Audience numbers, at present, will be restricted due to social distancing requirements of COVID.

The ages of our members range from 7 to 82 and we primarily formed the group, of like- minded individuals, to have some fun, especially after COVID and to help entertain the residents of Hayle and surrounding areas.

We have formed a committee and a



PHILPS

FAMOUS PASTIES OF CORNWALL

Order our Famous Cornish Pasties online to be delivered to your door at www.philpspasties.co.uk

Hayle East Quay 01736 755661
Hayle Foundry Hill 01736 753302
Marazion 01736 710332
Praze-an-Beeble 01209 831360



THE LAWN RANGER

KERNOW GARDENING SERVICES

HEDGING, STRIMMING AND
TRIMMING, WEEDING,
SEEDING, SOWING &
GROWING AND ALL YOUR
GARDENING NEEDS.

Call Simon:

07900 963 901

Saints

funeral services

**INDEPENDENT FAMILY
FUNERAL DIRECTORS**



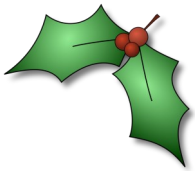
- PRIVATE CHAPEL FOR SERVICES
- RELIGIOUS/NON RELIGIOUS WELCOME
- PRIVATE CHAPELS OF REST
- PRE PAID FUNERAL PLANS

TEL: 01736 447070 (24HRS)
www.saintsfunerals.co.uk

KING GEORGE V
MEMORIAL WALK,
PHILLACK,
HAYLE .



BARNOON
CHAPEL,
CLODDY VIEW,
ST IVES.



constitution and hope to apply for charitable status shortly.

We are busy raising funds for much needed lighting, stage curtains, costumes and props. We had a Table Top Sale on Saturday 30th October, which was a roaring success, especially the raffle which included many donated prizes from businesses in Hayle and group members. For which we thank you all very much.

We are holding another Table Top on **December 11th in the Hayle Day Centre from 10am to 1.00pm.**

Anyone interested in a table, or donating items, please contact us. We are also planning more quiz nights for the future.

We would like to thank Blewett's Toy Shop in Foundry and The Makers Store in Copperhouse for selling our pantomime tickets. Prices are £4.00 for adults and £3.00 for children and concessions.

We are desperately in need of help with back stage, (Lighting, music)/ front of house,(check in, refreshments etc). If anyone would be interested in joining us please contact

Ken on 07733156530 or
ken_townend@hotmail.com

CORNWALL AIR AMBULANCE

Saving Lives This Christmas

Christmas is fast approaching, and for most people this means time off

Des Button

**Electrical Services &
Supplies
Rewiring,
Fitting Consumer
Units,**

Sockets & Switches

**Emergency callouts.
For Free Estimates &
Friendly
Advice
Call**

**01736
753211**



work spent with family and friends. For the Cornwall Air Ambulance crew however, Christmas is business as usual, on shift and ready to respond to someone in need within an average of just 12 minutes. That's why Cornwall Air Ambulance needs your help to save lives this Christmas. **Between the 1st and 15th December, any donation made to Cornwall Air Ambulance will be TRIPLED – thanks to two generous match-funders who are matching donations made during this two-week period.**



You can donate online at cornwallairambulancetrust.org, by calling 01637 889926 or by cheques posted to Cornwall Air Ambulance Trust, Trevithick Downs, Newquay, TR8 4DY.

To start the festivities, visit the Cornwall Air Ambulance Facebook page on Sunday 5 December to watch the virtual Cornwall Air Ambulance Christmas Carol Concert. Hosted by Justin Leigh, former BBC Spotlight Presenter, the evening will include performances from a variety of musicians.

Listen from the comfort of your own home and get into the festive spirit. Don't forget to warm up your voices! **For further information: Stuart Beveridge, Communications and Marketing Manager**

(stuart.beveridge@cornwallairambulancetrust.org, **01637 88 99 26/07525027130**)



**Kim's
Yoga and Pilates** at
Lelant Village Hall

Every Monday
Yoga 8am
Pilates 9.30am
Pilates 11am for
beginners

**Carnhell Green Studio live or on
Zoom**
Yoga
Sunday 10am Monday-6pm
Wed and Friday- 8am
Pilates
Wed 6.15pm Friday 10am

Numbers are still
restricted so
booking is
essential



Contact Kim
07751552313.

Café Riviere

Across Hayle's Jubilee Bridge

**Serving a variety of hot
food, late breakfasts,
drinks, ice-cream, cream
teas and snacks.**

- *Indoor and outdoor seating.*
- *Take-away is available.*
- *Open all year.*
- *Next to the public open-air swim pool, sub-tropical gardens, promenade and nature reserve.*

Hayle Friends Group CHSW

Little Harbour would like to say a big "THANK YOU" to all the people who supported us at the Autumn Fayre, to Sharon who allowed us to use the clubhouse at Hayle Rugby Club, all the stallholders who brought many various items to sell and the public who came to support us, on what was a very rainy day. We had a wonderful time with coffee and cupcakes to end the visit. The total raised for the day including the sale of CHSW Christmas Cards is £937.31.

This will help the work done at Children's Hospice South West

Little Harbour. The Children's Hospice cares for and supports very sick

children and their families. The illnesses these children have are many and varied and the hospice

gives the whole family time for respite to recharge their batteries, care if there is an emergency within the family and sensitive special care during the end of life support offered. Thank you so much to you all. Many Thanks to you for your support

*Mary Trevarthen Coordinator
Hayle Friends CHSW.*



Webb & Philp Ltd
electrical contractors



18th edition
BS7671

**All aspects of Electrical
work undertaken**

**Free Estimates. No Job Too Small.
Prompt. Reliable. Fully Qualified. Est 1972**

- ✓ Re-Wires
- ✓ Security
- ✓ Showers
- ✓ New Build
- ✓ Testing
- ✓ Maintenance
- ✓ PAT Testing
- ✓ Extra Sockets
& Lights

www.webbandphilp.co.uk

Tel/fax 01736 753651 Mobile: 07419 376882

Email: electricians@webbandphilpltd.co.uk

Millponds Update

I would like to open this Update by thanking our local residents and visitors too for their efforts to keep the site clean and the ponds rubbish free. Your care and effort is greatly appreciated.



The signs of autumn are very visible along the Rope Walk and along the peninsula between the Upper and Lower ponds where the autumn colour of the trees is truly lovely... The cygnets have just gone through their first moult and are looking well. The clucks come and go but they too are healthy. There is one gull which has only one eye but it manages well and we keep an eye on it in case it has any trouble. A few of the winter birds are starting to come in. Two Cormorants and a young heron have already visited the Inner Pond and some of the winter finches are with us as well. It is good to see them coming in and their presence is greatly appreciated. It seems a little odd to be writing this update in the middle of the Climate Conference in Glasgow. Hayle is



LAWRENCE BUTCHER CHIMNEY SWEEP

Traditional and power
sweeping, Solid fuel
servicing and repairs,
certificates issued, CCTV
flue inspections, cowls
fitted, CO alarms fitted,
fully insured

07966 547829

01736 850033

loloubutcher@aol.com



DIRECT TRANSPORT Removals & Storage

**LOCAL & NATIONWIDE
Full & Part Packing Service**

**Call for a free
competitive quote**

Tel: 01736 603018

or 07476 223221

7 days personal service

Hayle in Bloom. November 2021



As mentioned in the last Pump, there were many good and colourful aspects to the planting around Hayle this last year so that the town was a pleasant

environment to enjoy for many, both residents and visitors alike. Hayle also benefitted from a significant reduction in the amount of litter in evidence around the town.

Also mentioned in the last Pump was the fact that we were all anxiously awaiting the outcomes of the South West in Bloom Awards against the background of difficulties and problems often caused by COVID.

Well, the Awards were held this year in Weston Super Mare in early October and ten representatives from Hayle attended. The ceremony was opened by Jon Wheatley, the Chair of SWIB. He was followed by the mayor of WSM, Cllr. James Clay, who introduced us to his town. John



very fortunate to have areas around the town of great historical and ecological importance and it would good to see them used to enhance the area and educate people about them.

There is such an area alongside the river which flows into the Millponds and it takes in the land between the Ponds and the River Hayle Valley which could offer a number of sites around St Erh and Hayle. I know that there are people living in that area who would like to it used for ecological schemes such as tree planting and site enhancement along the river banks.

Come on, folks let us have your ideas for the future of the area and its local importance. We look forward to hearing from you. *Georgina Schofield*
Volunteer Wildlife Warden

***Hayle Facial Aesthetics
Line-softening injections
for frown/ forehead/crow's
feet. Gentle treatment by a
dentist.***



**HAYLE
Facial Aesthetics**

Discreet Hayle location.

For your free consultation please phone:

07803 772617

haylefacialaesthetics@gmail.com

Wheatley returned to give another talk. A second and highly entertaining presentation was given by James Alexander-Sinclair, vice-chairman of the RHS, who talked about his introduction to and rise in the horticultural industry.

Due to changes made to the format of the presentations, caused by Covid, It's your Neighbourhood Awards were only posted on the SWIB website later that evening. This reduced the number of winners collecting awards on stage, improving social distancing. Those certificates will have been posted by now.

However, there were several awards still to be made in person. This year Hayle achieved Silver Gilt in the Preece Cup, being beaten by Bradford on Avon, who took a Gold. Many of us found this disappointing when compared to achievements in the recent past but, perhaps this was a reflection on the tough challenges Hayle has had to face this year.

It is hard to maintain standards and entries when volunteers' numbers are down due to illness and school groups' participation in Bloom activities are curtailed because of COVID restrictions .

The I.Y.N's (In Your Neighbourhood entries), however, did come in with a number of 'outstanding' and 'thriving' awards so, congratulations to all those involved. For more information please look on the South West In Bloom website. To paraphrase Chairman Nigel's words, we must look at what we did right AND wrong, not blame others where we are to blame, regroup and work together to

HEARING
SERVICES CORNWALL

LIFE SOUNDS GREAT



Local Independent Hearing Aid

**Audiologist Richard Bunce
based in Hayle can help you
hear again.**

**Service and repairs to most
makes .**

**FREE HOME VISIT HEARING TESTS
covering Cornwall .**

**Book your appointment on
0787 218 3742
ears11@sky.com**

**PASSMORE EDWARDS
INSTITUTE**



**MEETING ROOMS
FOR HIRE**

**Hayle's Village Hall
has rooms for
meetings & activities
for 2 to 60+ people**

For more information:
WWW.HAYLE-PEI.ORG.UK
bookings@hayle-pei.org.uk
Or call: **07895-601978**

13-15 Hayle Terrace
Hayle, TR27 4BU
Charity Number 268429

Hayle CYCLES

MOUNTAIN - ROAD - BMX SPECIALIST

Bicycle Sales and Repairs

Tel: 01736 753825

36 Penpol Terrace, Hayle TR27 4BQ
www.haylecycles.com



HELP!

THE PUMP ARCHIVE IS MISSING ONE COPY OF ISSUE 155. IF YOU HAVE ONE HANGING AROUND AND DON'T WANT IT, COULD YOU DROP IT INTO THE POSTBOX AT PASSMORE EDWARDS PLEASE? THANK YOU.

raise our game and make those improvements which will bring success again.

At this point, a big thank you to the parishioners of St. Joseph's R.C. Church in Hayle, who have generously made a sizeable contribution to Hayle in Bloom. As we move towards spring, we should be able tell you where we spend it.

The next meeting is on the last **Monday of the month in the Passmore Edwards Institute at 7.00 pm.**

All are welcome.

Any offers of help, advice or suggestions to :

Nigel on Tel. 07895601978

A BEACON FOR SUPPORT, FUN AND FRIENDSHIP



We are for people with memory problems, their families and carers.

We dance, we sing.
We make things, we share things.
We do quizzes, we do puzzles.
We talk, we drink tea and eat cakes.

MW Carpentry & Construction

RENOVATIONS, EXTENSIONS & NEW BUILDS

For All Your Carpentry Needs
Tel: 07930 073332 Email: m.w.carpentryservices@mail.com

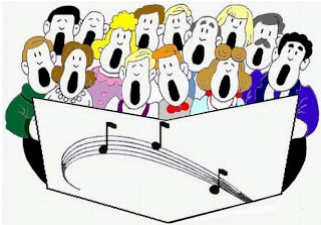


We are always there. We share. We care
But, best of all, we are free.
(But donations are always welcome)

We meet on the 1st and 3rd Monday of each month.
(Except for Bank Holidays) 2.00pm to 4.00pm at
Hayle Rugby Club
Memorial Park
Marsh Lane
Hayle
TR27 4PS
For more information contact us on
07513 221 066

PHOENIX SINGERS

Phoenix Singers have now re-located to Hayle where several



of our members, including our musical director, live.
From Tuesday 9th November we will be meeting weekly at the Hayle Day

BIZ AND BYTES

07974 647524 01736 755971

If you require computer assistance, either training or to resolve a problem then give us a call. Visits arranged to suit you.

Looking after the home user and small business.

**WEBSITES • BROADBAND • TRAINING •
COMPUTER SUPPLY • TYPING**



www.bizandbytes.co.uk
enquiries@bizandbytes.co.uk




ThurstanHoskin SOLICITORS

YOUR LOCAL SOLICITOR

At Thurstan Hoskin we like to take the stress and worry away from you.

We offer expert legal advice on :

- Property Services & Conveyancing
- Wills, Probate, & Powers of Attorney
- Deputyships, Trusts & Inheritance Tax planning
- Commercial Property & Leases

HAYLE  **01736 230 055**

33 St Johns St, Hayle, TR27 4LL | Mon-Fri 9am - 5pm

info@thurstanhoskin.co.uk

www.thurstanhoks.co.uk



Malt Decorations

Interior & Exterior Painting

07795 083 839

www.maltdecorations.com

Hayle & Surrounding area

THE FARM SHOP

31 Penpol Terrace, Hayle
TR27 4BQ

Open - 7 days a week
8am– 5pm

For all your local produce

Fruit, vegetables, plants, flowers,
free range eggs and
Cornish potatoes.

NOW IN

Christmas wreaths
Homemade pickled onions
Christmas flowers

We wish all our customers a
Merry Xmas and Happy New Year

Centre on Tuesday evenings from
7.30 – 9.30. Several of us are also
part of HADS (Hayle Amateur
Dramatics Society). Our motto is
'friendly people singing together' and
our aim is to make great music for
everyone to enjoy.

Tel: Myran: 01736 757 931

Email:

westcliff.stives@btinternet.com

Website: <https://>

www.phoenixstives.co.uk/

[https://www.facebook.com/](https://www.facebook.com/phoenixstives)

[phoenixstives](https://www.facebook.com/phoenixstives)

**Wishing all our customers a
Happy Christmas and New
Year from Hayle Library**

For those of you that don't already
know, we are fully open for browsing
and have three out of our five public
computers available for use with a 60
minute time limit. You can print from
our computers and we have a
scanner attached to number 1. We
are asking that all of our customers
continue to wear face masks and to
sanitise their hands on the way in to
keep everyone as safe as possible.
We are only a small building and are
hoping to continue being open if we
are all careful and respect each
other.

We have great online
resources available to our
customers like

Borrowbox where you can
borrow e-books and e-audio books,
Press reader which has lots of
newspapers and magazines to
choose from.

There are also E-comics available,



BUSH MONKEY GARDEN SERVICES

Keep it simple Keep it local !
Over 25 years experience with that
personal touch.

Qualified and fully insured
Lawn care

Planting schemes

Weed & insect control

Tree hedge & shrub pruning

Garden maintenance & design

Decking Patios

Pressure washing Call Anthony for free
no obligation quote or advice.

07825 881 078

bushmonkeygardenservices@yahoo.co.uk

Medici.tv which has classical music, opera and dance videos and we have a great on-line language site called Transparent language online. There is also an online lego club on the Cornwall Council website. We have a free Home Library service for those who are housebound and unable to get to the library. We have a lovely team of volunteers who can choose books and deliver them safely to you once a month so if this something you could benefit from please do get in contact with us by ringing the contact centre on 03001234111 and ask to be put through.

For those of you who are self-isolating we can also get some books out to you no problem so ring the number above.

We have just moved our Wednesday Rhyme-time sessions indoors with very limited spaces due to our small available space. There is a 10am and 11am session which you need to book through our facebook page or pop in to see a member of the team. Our Storytime/craft session is on a Wednesday afternoon at 3.45pm and is the same procedure as above. One week Abi does a craft session, the other is lego club.

Our current opening times are Monday, Wednesday and Friday from 9.30-5pm, closing for lunch between 1 and 2pm and on a Saturday morning from 9.30-12.30pm

Keep an eye on our facebook page to see what's going on

Our Christmas opening times are as follows:

Christmas Eve closing at 1pm,

Little Plumbing Jobs
*"No job too small
 just gimme me a call"*
07779 157157
Simon Miller

Christmas day closed,
 Monday 27th December closed,
 Wednesday 29th December closing at 1pm,
 Friday 31st December closing at 1pm,
 Saturday 1st January closed,
 Monday 3rd January closed,
 Wednesday 5th January open as normal

We hope to see you soon :)

ula
 CLOTHING & LIFESTYLE
 The Old Foundry Chapel,
 11 - 13 Chapel Terrace,
 01736 755543

Happily Ever After

Opening times
MON - SAT
930-5
Christmas
Sunday Opening
from 5th Dec -
19th Dec
11am-3pm
 We will be closed from
 the 25th Dec - 27th Dec

 www.ula.online

 f o
 @ulaclotthing

#SHOPLOCAL

SHIATSU

Acupuncture without needles

CHRISTIAN THELERMONT

Fellow of the Shiatsu Society UK (FWSS)

25 years practising

Gentle or deep tissue massage

Increases circulation and energy

Triggers own body healing
and immune system

Aligns body posture

Client stays fully clothed

christianthelermont@gmail.com

07949 938096

St Erth Concert Band



We are so pleased to have re-started rehearsals again. We met for our first rehearsal on the 2nd of November and we went straight into playing some festive Christmas music. We are looking forward to playing at St Erth for the switch on of their Christmas lights on the **4th of December**.

New members are always warmly welcomed. We meet on Tuesday evenings from 7.30-9.30pm at St Erth Methodist Hall.

Please feel free to come and meet us or have a play or a listen, or contact us via our Musical Director on **07394617127**.

So, if you play a brass, woodwind or percussion instrument and would like to join a friendly bunch of musicians please do get in touch.

ANGOVE

SPORTS

**COPPERHOUSE,
HAYLE.**

Tel(01736) 752238.

For all sports equipment,
clothing, footwear
and fishing tackle.

Rackets repaired
and restrung.



**JAKE'SMOBILE
PHONE REPAIRS
01736 757233
07873 799 930**

How is your brain today?



Feature films are the result of years of scientific research combined with the experience of years.

Now count the "F's in the sentence, only once. Don't go back and count again!

Now turn to next page.

I was horrified when my wife told me that my six-year-old son wasn't actually mine. Apparently I need to pay more attention during school pick-up.

Plenty of avian activity to report this month. Migration has been in full swing with a variety of waders recorded at Hayle Estuary from August onwards. These include Black-tailed Godwit, Bar-tailed Godwit, Ruff, Knot, Greenshank, Redshank, Common Sandpiper, Curlew Sandpiper, Wood Sandpiper, Sanderling, Ringed Plover, Golden Plover. Numbers of Dunlin and Ringed Plover have been impressive, with a count of around 250 of the former and 150 of the latter on 7th September, for

JC ELECTRICAL

Your complete 24 hour Electrical Service

**Rewires • New Build • Lighting •
Showers • Extra Sockets • Heating**

City & Guilds Qualified (Tests to BS7671)

Part P registered

Prompt and reliable friendly service

Free estimates and all work guaranteed

Office: 01736 754543

Mobile: 07739 577549



Makers Boutique Studio

Fabric Haberdashery Yarn Handmade

We are delighted to be re opening with a new selection of fabrics,

Yarn, haberdashery, and creative supplies.

The Old Foundry Chapel, Hayle

Open 10 am to 5pm
Wednesdays from 12pm to 5pm

Pop into store or shop online

www.makersboutiquestudio.co.uk

click and collect service available



Follow us on facebook and instagram for latest news, offers and discounts.

west than usual and good numbers suggest a good breeding season in the Arctic. 2021 looks to be an influx year with plentiful records around the country. Two American vagrants were present at Hayle with other individuals of the same species elsewhere in the county at that time.

A Pectoral Sandpiper was recorded on 16th September and a Semipalmated Sandpiper delighted birders from 11th – 20th October. Both little waders winter South of Mexico, with a few Pectoral Sandpipers wintering in Australasia, so it's always pretty mind-blowing when they hit our shores.

It is really important that the estuary provides a safe refuge for these birds to rest and feed, and very alarming that the number of wildlife disturbance incidents has increased significantly since 2019. As a consequence, we are monitoring the estuary more closely and asking if you see wildlife disturbance on our nature reserve to please report it to us at Cornwall@rspb.org.uk

As choughs continue to make a welcome come-back to the Cornish coast, BBC One's Countryfile highlighted the birds by interviewing our local RSPB Warden, Jenny

example. Up to 10 Little Stint were recorded daily at Hayle for a chunk of September. These tiny waders are typically a scarce migrant in Britain, stopping off on their way to winter in Africa. September is the best month to spot one as juveniles leave breeding grounds for the first time. Influxes can occur when weather conditions are suitable for pushing southbound migrants further

THE COPPERHOUSE CLINIC

5 Market Square, Hayle, Cornwall. TR27 4EA

01736 757524

www.thecopperhouseclinic.co.uk

GAIT ANALYSIS
LOWER LIMB BIOMECHANICS
LAB MADE PRESCRIPTION
ORTHOTICS
HCPC REGISTERED

CHIROPRACTIC
GCC REGISTERED

CHIROPODY & PODIATRY
LASER TREATMENTS
HCPC REGISTERED

Parker – I was ‘choughed’ to see it! (Sorry!)

Until next time
Tina Morgan

Brain Answer There are SIX 'F's in the sentence you have just read. If you spotted four, you're above average.

If you found five you're even better.

If you found six, you're a genius and too clever to waste time on stuff like this.

Installing a memorial bench



Peter Thomson and Trevor Smitheram

in honour of Reginald “Mike” Rusden, Man of Hayle, on Penpol Terrace

My friend thinks he is smart. He told me an onion is the only food that makes you cry, so I threw a coconut at his face



Specialist Building Surveyors

Asbestos Surveys
Buildings Surveys
Damp Diagnosis
Fire Risk Assessments
Timber Decay
Mundic Testing

Craig J Shepherd
BSc(hons) Building Surveying, CSRT

01736 752012
07890 528 312
info@cjshepherd.com
www.cjshepherd.com

Hayle Twinning



Association

Hayle - Pordic 1997-2022

Pordic is a small town, just north of St Brieuc on the Cote d'Armor in Brittany. In 1997 links were formalised between Hayle Town Council and the Mairie of Pordic, and the Hayle - Pordic Twinning Association came into being. Every year since then, with the exception of the last two 'covid years', exchange visits

have taken place.

Next year, 2022, marks 25 years of twinning between our two towns. We hope the Association will continue for another 25 years. To this end we would like to welcome some younger members, as many of the current members are getting on a bit. We are also calling on families who would like to introduce their children to French culture, language and new friends, to join up. It's an economical way of visiting Brittany, and visiting as a guest rather than a tourist has many advantages.

We are hopeful that visits between our towns will be on again next year. The Bretons will be arriving around the 25th May for 3-4 days, and we usually return the visit on the August Bank holiday. We put them up in our homes, and they return our hospitality

when we go to Pordic.

We will be holding the AGM this year on **Monday February 14th, 7pm**, venue to be arranged. This is open to the public, although only paid up members are eligible to vote.

We are planning a fish and chip supper in January, which could be another chance to meet existing twinning members.

You don't need to be able to speak French to be a twinner (most of us can't). If you are interested in joining the exchange visits, or just want to find out more, you can call Maureen Mason (07792 586948, or email maureenmason2000@yahoo.co.uk), our chair, George Daniel, (01736 333236) or secretary Mike Stuckey (01736 697771)

WEST CORNWALL *plastics*



- QUALITY SERVICE
- QUALITY INSTALLATION
- QUALITY PRODUCTS

We are delighted to announce our recent award of the Which Trusted Trader Scheme. We have been inspected by Which magazine and Ultraframe, the leading manufacturer of conservatory roof solutions, and passed with flying colours.

As well as carrying a wide range of PVC building products in our warehouse, our installation teams carry out work to the highest standard, giving you the peace of mind that comes with using a Which Trusted Trader.

I would like to thank the readers of Hayle Pump magazine for their continued support, as we serve the people of Hayle and beyond with the best PVC and Aluminum building products

Thank you
Nick and the WCPL team

INFO@WCPL.CO.UK
01736 759444
@WestCornwallPlastics



*West*COAT

CERTASS



Is this Britain's unluckiest Dog?

Meet Dillon, a 9 year old male Lurcher who loves his toys, food and

cuddles. On the surface, Dillon has it all, at least two good walks a day, treats, endless cuddles, regular training and ALL the attention (which he LOVES). But something you should know about Dillon is that he doesn't have a home. He is currently in rescue and has been for around two years waiting for the right home to come along and someone to call him their own. Dillon lives at the National Animal Welfare Trust Centre in Hayle. He arrived 2 years ago after his elderly owner passed away and he was found lying with him, protecting him and watching over him until the very end. At just 7 years old this was a huge loss for Dillon and he was brought to the NAWT Cornwall where the team set about trying to make Dillon happy again. After never living with another dog, children, and never walking with another dog, the team worked with him to make Dillon's life as stress free as possible. He has seen countless dogs come and go and yet still he waits for his turn. After a trial living with another dog, it was clear this wasn't going to be an option going forward. Dillon is just too used to being an only child to share! After the trial he was back at the centre again, and it was time to try and find him a new owner. Several people have started to

Cabinetmakers & Joiners **JOHN ANDREWS**

Windows, Doors & Staircases
constructed in soft wood and
hardwood.

Entrance gates

Fitted Furniture.

Restoration & repair work
including Boxframe windows.

Sash cords. Free estimates .

email:

johnandrews123@btinternet.com

www.johnandrewsjoinery.co.uk

Mob 07765 341616

tel 01736 755423

Brett & Leni
HANDCRAFTED JEWELLERY

Make your own perfect gift at our
jewellery making workshops

Gift
Vouchers
Available



We offer one-to-one, parent and child or small group bookings. All materials and tools provided. Covid-19 safety measures in place.

To book your workshop session contact us:

Tel: 0757 077 4332 E: sales@brettandleni.com

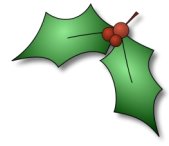
Shop online: www.brettandleni.com

Unit 6, West Stables, Foundry Lane, Hayle

get to know Dillon, but through no fault of his own they have all pulled out. Changes of circumstances, family, change of heart... Dillon has seen it all and he is desperate to get to know someone who will take him home and give him the life he deserves. After so many failed attempts at homing, he really is Britain's unluckiest dog.

Although Dillon unfortunately can't live with another dog or with any young children (although visiting family would be fine... he just isn't keen on sharing his owner's love with children!), he does now happily go for walks with other dogs at the centre..... the treats really help. You can regularly hear the staff at the centre walking with Dillon and saying things like 'How on earth are you still here Dilly?', 'How is such a good boy just so unlucky?' and 'Dillon if only

you would live with another dog... I would take you tomorrow!"



There must be a home out there with what Dilly needs. -

A garden

A home which is a comfortable size for him to live in,

No other pets in the home

Based in Cornwall

No young children (Dillon is not too keen on sharing his owners :

Plenty of treats.

Cuddles galore, Lots of walks and zoomies.

TOYS! Lots and lots of toys/

Although he may be 9, Dillon is such a young boy at heart. (if it weren't for his little grey whiskers you would think he was a pup) His bed is stacked with about 12 soft toys, from

Enjoy true freedom
of movement...

Rediscover your vitality



Our practitioners are all highly qualified, covering chiropractic, sports massage, physiotherapy, aromatherapy massage, chiropody/podiatry, reflexology and shockwave therapy.

 Cornwall
Chiropractic
Clinic

www.cornwallclinic.co.uk | Foundry Square, Hayle | Call today 01736 759088

trusty Mr Sloth to his newest toy, Ted the bear. All of them are treated like Dillon's babies and take pride of place on his bed every night... No walk is complete if he can't bring one of his cuddly mates.

Can you help us find a home for Dillon... Britain's unluckiest dog? This special boy is in need of a forever home. Share this article, spread the word and help us get Dillon, Britain's unluckiest dog into the loving home he deserves.

Think you may be the home for Dillon? Head to our website <https://www.nawt.org.uk/centres/cornwall/cornwall-adoption> to download an application form, call us on 01736 756005 or email cornwallreception@nawt.org.uk

Do you know any of the military named on the WW2 war memorial? If so, local writer and historian Chris Berry is seeking your help. Chris has already written a short history of the veterans named as losing their lives in WW1, and now is working on a second book, about those killed in the 1939-1945 war.



If you are able to help Chris with details or stories of any of the heroes mentioned on the memorial, please contact Chris on 759558, or email christopher.berry1@btinternet.com.



Hayle War Memorial
Information needed



The Mad Hatter

Bed and Breakfast Open all Year !
Rooms overlooking Copperhouse Pool.

Full English breakfast.

Competitive rates.

Relax with a Scrumptious Cream Tea or Homemade Cake in the Café or Tea garden.

Open 10am-4pm

Monday to Sunday.

Closed Tuesdays.

73 Fore St Hayle TR27 4DX
01736 754241 07871 165 381

www.cornwall-online.co.uk/madhatter

paulinemadhatterbandb@outlook.com

Dogs welcome



HAYLE DAY CARE CENTRE **Commercial Road, Hayle**

An affordable day care facility for the elderly of Hayle, St Ives and district

Transport • Freshly cooked meals

Also includes bathing and hairdressing
Therapy and lively social interaction

Always a friendly welcome

Call 01736 755000

HAYLE FILM CLUB REMAINS DORMANT UNTIL SPRING

The Hayle Film Club committee has decided to delay restarting until at least May 2022. Perhaps by then Covid will finally be reduced to background noise -- and we'll feel safer laughing (and sometimes weeping) together in the dark. We do miss sharing our love of cinema with everyone!

Hayle Day Care Centre is a small independent charity serving the communities of Hayle, St Ives and Carbis Bay.

We provide a welcoming, comfortable, environment, with a happy relaxing atmosphere and a caring service. Our main aim is to reduce loneliness for the over 60's and provide a stimulating environment.

We serve hot meals each day. These are prepared on our premises and are of course, delicious.

We have daily activities. This creates an engaging social atmosphere where you can enjoy company and make friends. This includes music, exercises, art and crafts, whiteboard games, quizzes, and other group games.

People who use our service say, 'I come here to meet people. The food is great as well' 'The people here are very kind and helpful. I am really happy here. It's great, it's somewhere to go and meet your friends.'

'I came here originally to give my daughter a break. I now come for me, because it's my club. In five months I

YOUR OLD TAPES ONTO CD



**YOUR OLD CASSETTE, REEL TO REEL TAPES OR
33/45/78 RPM RECORDS ALL
SAFELY TRANSFERRED ONTO CD**

Your precious memories saved forever. Your own photos, information & dedications can be included on the CD/DVD cover.

Also now: old VHS video tapes & photos all onto DVD.

Digital Recording for Singers & Musicians, Songwriters, Poets, Story Tellers, etc.

Also Musical Backing Tracks provided.

**Contact Steve Nunn. 01209 719 481
www.cornmillstudio.co.uk
Email: cornmillstudio@aol.com**

have made more friends than in the six years since I moved to Cornwall.' Since the pandemic we have found more people need an opportunity to make friends and socialise. If you or someone you know could benefit from friendship and so much more, please call our team on 01736 755000.

Just been to the hospital and saw a sign saying "Thieves operate here" - surely it would be safer to leave it to the surgeons?

(This story is from our archive - Christmas 1995)

HECTOR the HEDGEHOG'S HIDEAWAY

If you remember, I wasn't feeling very well, and was a little worried that I may have eaten something that had been contaminated when the farmer had been spraying the field. Thankfully I am still here, as I had thought I had eaten too much, I must admit, I can get a bit greedy at times, well, wouldn't you if you had been asleep for twelve hours? I am lucky I can curl up and go to sleep any time if I so wish. I don't particularly want to at the moment because I think I could do a lot of good just keeping the countryside healthy, and help keep slugs and caterpillars down, there aren't many caterpillars around at this time of year but there are plenty of juicy slugs, and after all, I've got to build up my strength for when the really cold weather comes.

Dreckley's Waste Collection House Clearance & Deliveries

**No job too small
Garages, Houses, Sheds, &
Gardens cleared.**

**Fully registered & insured.
Honest reliable friendly
service.**

**Call Suzanne on 07877 325404
Email: dellamuro@btinternet.com**



CVC
Solicitors

Confidence to Care for all your Legal Needs!

We offer advice on the following:
Business & Employment, Conveyancing &
Property Matters, (including Commercial),
Family & Children, Civil Litigation &
Personal Injury, Wills and Inheritance Tax,
Lasting Powers of Attorney, Probate &
Estate Administration, Elderly Client and
Care Home Fees.

**We have offices in HAYLE,
PENZANCE and ST IVES**

**We can also undertake home
appointments in Hayle by arrangement.**
Please call us to make an appointment on:

01736 362362 or

email: enquiries@cvc-solicitors.co.uk

or see our website:

www.cvc-solicitors.co.uk

I have been meandering down the hedgerows, towards the beach - if you had forgotten - the rubbish is awful, I know people don't like to hear about these things, and like to sweep it under the carpet, but I think they ought to know that I nearly died in a plastic bag that somebody had just cast away - for somebody else to pick up.

I can feel sand under foot, the marram grass making me deviate in my course. It's strong stuff but not only does it hold the Towans together, but it harbours lots of little titbits which are very enjoyable as a starter for my main meal, once I get to the high tide line.

Not many people realise that can swim, which allows me to forage about in the shallow water looking for shellfish, very tasty, but it is getting a

little bit late in the year for me to spend too much time here, it doesn't look as if there is much food here anyway, I would have been better off earlier in the year.

I think I shall hunt about for a bit, have a snuffle here and there, and then make my way back to that lovely field, there is so much food there, it's almost unbelievable, and more important, I have found some discarded pallets which will be an ideal place for me to snuggle down for the winter, which isn't very far away.

Goodnight for now.

My dad is the salt of the earth - always calls a spade a spade - apart from that one time he tripped over one when he was doing the garden.




TP Wills & Probate.
Wills and Estate Planning Consultant.

"Where there is a will there is a way to protect your family"

- * **WILLS * TRUSTS**
- * **ADVICE FOR SENIOR CITIZENS**
- * **POWER OF ATTORNEY**
- * **PROBATE ADVICE**
- * **CARE FEE PROTECTION**

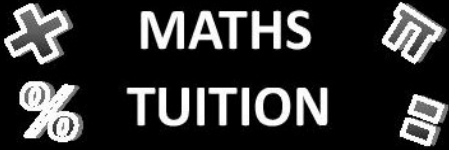
Call **Tim Poole**
01736 758418 or
07900 323939



Institute of Professional Willwriters
MEMBER



APPROVED CODE
TRADING IN NEARDS.GOV.UK



MATHS TUTORIAL

Need extra help with your maths?

Whether you are studying at key stage 3, GCSE or are an adult learner, I can help.

I am a fully qualified maths teacher with 10+ years experience of teaching in secondary schools. I offer maths tuition tailored to suit your exact needs.

Enhanced DBS

For further information, please contact Lisa
01736 851060
haylemathstuition@gmail.com

Free Offer

Would anyone like a box of
Private Eyes 2018 (or there
abouts) to 2021
Also a box of Oldie magazines.

If you would like these please
phone 01736 752319 for
collection.

You will enjoy hours of reading
even if they are old!




David N'jie
PAINTER & DECORATOR

 07944 156995  01209 831397

dave.painter@hotmail.co.uk
Trethannas Cottage, Praze-an-Beeble
Camborne TR14 0LH





The Hayle Pump Team wish all our
readers and advertisers a Very
Merry Christmas and a safe and
prosperous New Year



TJ'S CARPETS LTD.



**New Showroom at Tolroy Garage,
58 Mellanear Road, Hayle TR27 6HF**

Come and see our wide selection of carpets & vinyls,
laminates and patterns

Our famous home selection service still available

Full range of flooring accessories

Call Now! 01736 757540 or 07976 608215

Free measuring & estimate service

"Before You Buy, Give Us A Try"

Quiz 159 **Cornish General Knowledge**

To make a change from our usual hidden words quiz, here is one that has been sent in by a reader - very many thanks.

1. Our naughty dancing girls stand forever in the fields—led astray by the musicians?

(5, 7)

2 Trevelyan, Stephen. Nigel, John, Charles, Kevin. Barry and Gary, these brave Cornish men set out for the final time in this boat.

(7, 6)

3. The doomed coaster with eight on board lost to the rocks despite the heroic efforts of the crew of Q.2

(5, 4)

4 Do the bells ring out from this engine house landmark?

(4, 4. 4)

5 Things could, and sometimes did. go with a bang at this old industry in our dunes.

(8, 5)

6. A brave Cornish sailor who saved the hungry just in time for Christmas.

(3, 7)

7 The faithful pet which accompanied him on his dangerous mission.

(6. 3. 9, 3)

8 Is it a bit fishy around “Chief Jack’s “ pub in Newlyn? (3, 9)

9. Richard’s new pride and joy made its noisy debut here on Christmas Eve. (8,4)

10. In which village, back in the

summer, did Joe and Jill go to Sunday Mass. (6, 3)

11. A hot fiery end, or a wet rocky one should you fall down here.

(5, 5)

To win a prize of £20 please send your answers by **13th Jan 2022** along with your contact details to editor@haylepump.org.uk or use any of our drop-off points on page 2.

Answers to 158 **‘Tune In**

1. Harp 2 Organ 3 Tuba

4. Piccolo 5. Sax 6. Bongo

7 Cello 8 Mandolin 9. Drum

10 Bass 11 Sackbut 12 Piano

13. Flute

The winner, drawn at random was Trevor Millet of Hayle

You are very welcome to send in a quiz on any theme of your choice



Club Listings

Bridge Club Every Mon. Carbis Bay Memorial Hall 2-5 pm £2 inc. tea & biscuits. Enq: Graham 01736 762512

Happy Art every Thurs Leedstown Village Hall 10.00-12noon. Emma Davies 01736 753596, 07384 583 004 emma@happy-paws.biz

Hayle in Bloom. Last Mon. of the month, (not Aug & Dec) Passmore Edwards Institute 7pm.

www.hayleinbloom.org.uk

Hayle Breezers Group Thursdays. 1.30pm Passmore Edwards Inst. April Hogarth 0781 376 7071 Bob Scales 01736 751735

Hayle Art Society Passmore Edwards Institute on Tues 1.30-3.30 & Wed 7.00-9.00 tel. Chris 01736 757720 or Penny 01736 756445

Hayle Christmas Lights last Thurs of every month (except Dec,) 7pm at Hayle Day Care Centre Annexe New volunteers are always welcome. haylechrismaslights@gmail.com

Hayle Community Archive.

Open Tuesday & Thursday 10 a.m. – 1p.m.:Tel 01736 753962, email: haylearchive@haylearchive.org.uk

Hayle & District Bowling Club.

1.00pm every Wed Short Mat bowling indoors in winter 07766 662 908

Hayle Film Club. Films shown at 7.30 p.m. at Passmore Edwards Institute. Donna 01736 753184.

www.haylefilmclub.org.uk

Hayle Friends Group for CHSW

Hospice meets informally once a month under the chairmanship of Mary Trevarthen 01736754342 trevarthenmv@uwvclub.net

Hayle Harbour Users Association

1st Mon, of each month, 7.30pm. Royal Standard Pub R Lello 01736 757632

Hayle Judo Kwai Unit 7 Rospeath Industrial Estate, Crowlas. Tues &

Thurs. Sensei Richard 01736 740723 or Karen Deacon 0779 209 9979

Hayle Library Reading Group. 2.pm first Wed. of each month .

Hayle & District Lions Club. 2nd and 4th Tuesday of every month, 7.30pm at Passmore Edwards Inst. Secretary Yvonne Watson 01736 741375

yvonnemystique@hotmail.com

Hayle Lawn Tennis All ages and abilities welcome. Tremeadow Terrace, Hayle 01736 850843

www.haylelawntennisclub.co.uk

Hayle Local

Vocalz Mondays 7.30pm, Hayle Methodist Church pluing@tiscali.co.uk 754225

Hayle Memory Café 1st & 3rd Mondays 2-4pm at Hayle Rugby Club Christine 07513 221066

Hayle Model Boat Club. Weds. 7-9pm & Sunday mornings 10-12 noon, meeting at green chalet by Hayle swimming pool. 01736 755516, or Les on 01736 754254

Hayle Model Railway Club & Duchy

Railroaders Club Rooms Unit 5, Praze Business Park, Praze-an-Beeble. Mon. & Thurs. 7pm – 9.30pm. Bob Mims 01736 757910

bobmims@live.co.uk

Hayle Meanderers Every Wed. 10.30am Commercial Road car park. Free, + contribution to carshare. Eddie Downing 01736 364673

Hayle Old Cornwall Society. First Friday of each month. Oct, to May at Hayle Day Care Centre 7.30p.m. Trevor Smitheram 01736 756793

Hayle Nutty Knitters Thursday 1pm at Cornish Arms 01736 762418

Hayle Penwith U3A at Hayle Day Care Centre

Chair Mike Stuckey 01736 697771 u3asites.org.uk/hayle/home

Hayle Pilot Gig Rowing Club. .
Rowing out of Hayle Harbour most
Tuesdays and Thursday evenings
chair@haylegigclub.co.uk

Hayle RNLI meets from March to
November at 7.00pm the 2nd Wed. of
the month at Unit 5 Hayle Industrial
Park. Tel 01736 753567

Hayle Surf Life Saving Club Riviere
Towans Hayle TR27 5AF Captain:
Dave Parker 01736 755303

Heyl St Piran Singers Every
Wednesday at St Erth Old School
Room 7.00 to 9.00 pm Ann Thomson
07766128189

Hayle Twinning Association
Communicating on zoom during the
Covid crisis. Contact George Daniel
01736 333236 or email
penelope.young@btinternet.com

Heyl Town Band Rehearsals Tues &
Thurs 7:30pm-9:30pm, Juniors on
Thursdays 6:pm-7:00pm

Macmillan Cancer Support
Meet at Three Trees, 16 Penmare
Terrace, Hayle on most Thursdays at
7.30pm Suzanne Benney 01736
753635

One & All Choir (mixed) Tuesdays
2.30 to 4.30 at St. Erth Old School
Room . Contact Ann Thomson 07766
128889

**Penwith Guild of Weavers Spinners
& Dyers** 3rd Sun of mth (not March)
1-5pm Passmore Edwards Institute
01736 762418

Phillack Tower Bellringing every
Tuesday at 7.30pm - Tina Morgan
01736 756567

Phoenix Singers Tues 7.30—9.30
Hayle Day Care Centre Mrs T Cook
797708

Royal British Legion Passmore
Edwards Institute. Every Mon. Wed. &
Friday evening and Sat. afternoon.
Mr Alan Conquest 07470 308400

Save Our Sand For date and venue
of meeting, go to www.sos-

hayle.org.uk. Or visit Facebook. To go
on our mailing list contact
saveoursand@talktalk.net

Scrabble Club at Connor Downs 2nd
Thurs each month at W.I.Hall. 2-4pm £2
for hall & refreshments .

carolinewindsor123@btinternet.com

**Shore Surf Ladies Only & Juniors
Surf Club** All abilities

welcome. Every Saturday 9 – 11am.
01736 755556 Beachline 07855 [755556](tel:755556)
info@shoresurf.com

St Erth Concert Band Rehearsals
Tues.7.30 to 9.30pm in Methodist Ch.
Hall enquiries 0739 4617127

St Ives Camera Club Monday 7.30pm
at St Anta Church Hall, Carbis Bay
stivescameraclub.co.uk

St Ives and Hayle Community Choir
Tuesdays 1.30pm to 3.00pm at St Anta
Church Hall, Carbis Bay 07446 492266

Stroke Community Café 2nd Tuesday
of month. 10am Dobbies (Wyevale)
Garden Centre Café

simon.eastment@stroke.org.com

Table Tennis for Fun, every Friday at
2pm at Hayle Methodist Church Hall,
John Nunn 01736 759686 e

West Cornwall Concert Band
Monday 7-9pm at Camborne Wesley
Church – Please email Becky

Lovegrove at
westcornwallconcertband@gmail.com

W.I. Hayle 1st Tuesday of the month,
7.00 pm in Esme Jelbert Room at
Passmore Edwards Institute
Margaret Stockton 01736 756007

To book **Phillack Church Hall**
please contact: Tracey Worrall 07490
691120

*To appear on this page free, see
details on page 2.*

- | | | |
|--------------------------|----------------------------------|-------------------------|
| 2 1st Choice Paving | 31 Drecklys | 16 Proper Greek |
| 9 A. McDonald | 14 Farm Shop | 14 Property Maintenance |
| 16 All Aerials | 13 Flowertime | 18 Saints Funeral |
| 28 Angove Sports | 24 Hayle Cycles | 28 Shiatsu |
| 11 Bespoke Framing | 36 Hayle Day Care | 8 Sweet Williams |
| 12 Big Pink Tree | 38 Hayle maths Tuition | 5 Sylvia's Exercise |
| 25 Biz and Bytes | 33 Hearing Services | 17 T. Hosking Roofing |
| Blewetts | 28 Jake's Mobile | 25 Thurstan Hoskin |
| 33 Brett & Leni | 29 J C Electrical | 39 T J Carpets |
| 26 Bush Monkey | 33 John Andrews | 38 T P Wills |
| 19 Cafe Riviere | 5 Julia Woodhams | 13 Transformations |
| 15 Castaways | 19 Kim Hopkins | 27 Ula |
| 21 Chimney Sweep | 17 Lawn Ranger | 20 Webb & Philp |
| 31 CJS (Craig Shepherd) | 7 Lewy's Fish & Chips | 32 W. Cornwall Plastics |
| 15 Cliffords Plumbing | 27 Little Plumbing Jobs | 43 Winns Funeral |
| 30 Copperhouse Clinic | 35 Mad Hatter | |
| 6 Copperhouse Jeweller | 30 Makers Boutique | |
| 36 Cornmill Studio | 25 Malt Decorators | |
| 32 Cornwall Chiro Clinic | 12 Mobile Foot Clinic | |
| 36 CVC Solicitors | 4 Mike Thornton | |
| 10 Dapper Dogs | 24 M W Carpentry | |
| 7 Dave Thomson | 23 Passmore Edwards | |
| 39 David N'jie | 11 Paul Sherris | |
| 18 Des Button | 3 Plantech | |
| 22 Direct Transport | 17 Philps pasties | |

**Pick up points in bold.
Copperhouse PostOffice.
Warrens at Foundry,
McColls, Hampsons, Old
Foundry Chapel,
Spar, Farm Shop
Lewy's Fish and Chips**



W J WINN FUNERAL DIRECTORS



We are here to help you 24 hours a day

- Funeral Pre-Payment Plans
- Memorials
- Private Chapels of Rest

WJ WINN

Trenwith Terrace
St Ives TR26 1QE

Tel: 01736 793029

WJ WINN

69 Fore Street
Hayle TR27 4DX

Tel: 01736 752124

CHARLES BRYANT & MARAZION FUNERAL SERVICE

North Road, Goldsithney, Cornwall TR20 9JY

Tel: 01736 710318



Part of Dignity plc. A British Company



SANTA SLEIGH **CHRISTMAS 2021**



Calling all children (and Parents and Grandparents) in Hayle & Connor Downs. Father

Christmas will be on his Sleigh and is looking forward visiting a street near you. He is hoping to be able to stop at certain points and speak to you. (Covid restrictions allowing). He will set out each evening from 6.00p.m. If the weather is inclement, he will be out the following week. Check for any updates on Hayle Lions Facebook.

MONDAY 6TH DEC: Route includes:-

Pentowan Gardens, Loggans Way.

CONNOR DOWNS: Trevarthen Close, Greenbank, Willoughby Way, Arundel Way, Ellis Meadow.

TUESDAY 7TH DEC: Route includes:-

Horwell Drive, Trevassack Manor Road, Pools Court, Madison Close, Amal-an-Avon, Forth-an-Trewennow.

WEDNESDAY 8TH DEC: Route includes:-

Pathway Fields, St. Georges Road, Trevithick Crescent, Coronation Road, Curnows Road, Humphrey Davy Lane, Baileys Meadows, Rounders Rise, Queensway, Green Parc Road.

THURSDAY 9TH DEC: Route includes:-

Church Street, Bodriggey Street, St. Johns Street, Trelawney Place, Trelawney Way, Mount Pleasant, Bay View Terrace.

FRIDAY 10TH DEC: Route includes:-

Mellanear Close, Tolver Close, Ash Drive, Trelissick Fields, Gwel Trencrom, Trelissick Road.

Hayle & District Lions Club would like to take this opportunity to wish everyone a Very Merry Christmas and a Happy and Healthy New Year.