

# HAYLE PUMP NEWSLETTER

FREE COPY, Please take one



Full story on page 3

# Hayle Pump Newsletter

Passmore Edwards Institute  
13-15 Hayle Terrace, Hayle TR27 4BU

Hayle Pump - Now online at [www.haylepump.org.uk](http://www.haylepump.org.uk)

---

## The new team

### Editor

Brianna Breeze  
[editor@haylepump.org.uk](mailto:editor@haylepump.org.uk)

### Desk Top Publishing

Neil Cadwallader-Kemp  
[dtp@haylepump.org.uk](mailto:dtp@haylepump.org.uk)

### Treasurer

Tess Hulland  
[treasurer@haylepump.org.uk](mailto:treasurer@haylepump.org.uk)

### Advertising

Peter Channon  
[ads@haylepump.org.uk](mailto:ads@haylepump.org.uk)

## Subscriptions & Web

Hayle Pump can be viewed online at  
[www.haylepump.org.uk](http://www.haylepump.org.uk)

For those readers who would like to have a copy of the Hayle Pump sent to family or friends, please send a cheque or postal order made payable to **Hayle Pump Newsletter** for £3.00 (6 issues) and send to:

### HAYLE PUMP SUBSCRIPTIONS

35 Penpol Terrace, HAYLE TR27 4BQ.  
Please state delivery name & address.

## Code of Submission

The Hayle Pump would like to remind readers that the items, or articles and Public Notices are accepted as points of view and are not necessarily the opinion of the newsletter team. Items received may be edited or omitted due to limitations on space. Correspondents are reminded that all material submitted must be signed with their name and address, and if possible, telephone numbers for validation. This will not be printed if you do not wish it to be.

News, letters, notices etc. must be emailed to the editor '[editor@haylepump.org.uk](mailto:editor@haylepump.org.uk)' or dropped off at **Bigglestons, Angove Sports, Colin's Market Garden** or drop off or post to **Passmore Edwards Institute**.

## Advertising Rates

**Full Page** (130 x 190 mm) POA

**Half Page** (130 x 95 mm) £22.00

**Quarter Page** (63 x 95 mm) £12.00

**Eighth Page** (63 x 42 mm) £7.00

Please send adverts to Peter Channon at; [ads@haylepump.org.uk](mailto:ads@haylepump.org.uk)

*Advertisers please note that the prize given for the quiz is a voucher worth £20 to be spent with any of our advertisers in the Hayle Pump Newsletter.*

**Copy Closing Date for next issue - 20th Nov 2010**

## A brief introduction...

**Editor** Brianna moved to Hayle from Longrock eleven years ago. A member of the Hayle library reading group and the U3A writing group, she previously edited the Green Centre News for the Penwith Green Centre.

**Desk Top Publishing** is arranged by Neil who lives in St Ives with his wife and two children. Neil runs his own graphic and website design business, and part of his services includes design for charitable and volunteer based organisations, at reduced rates or sometimes free.

**Treasurer** Tess a retired Superintendent Registrar of Births Marriages and Deaths moved to Cornwall three years ago from Woking in Surrey and now lives in Connor Downs. She is a past President of Hayle Lions and belongs to Hayle U3A and the Old Cornwall Society.

## Extras - Read all about it...

Articles marked with a  have been edited to fit within the new look pages of the Newsletter. Full uncut versions can now be viewed on-line at the Hayle Pump website;  
[www.haylepump.org.uk](http://www.haylepump.org.uk)

## OLD PUMP *greet*s NEW PUMP

The fire at Pratts Market in February resulted in much of the Hayle Pump equipment suffering smoke damage, and of course all the equipment had to be moved out for the renovation and redecoration, which is still taking place at the rear of the market. At this natural break in the proceedings most of those of us on the Pump team, including founder members Sarah and Jeff Turk, decided to retire. For a while it looked as though, after 16 years, the Pump would be no more, but thanks to the good offices and input of the Hayle Mayor, John Bennett, there has been a most welcome re-launch, and the Pump is at last back on the streets of Hayle. One member of the old team, Brianna Breeze, has stayed on and has become editor.

The new Hayle Pump has fully embraced the 21st century, using desktop publishing in place of our old cut-and-paste, and the printing is being out-sourced. Our old printer was thankfully still working, and as it was well covered suffered little smoke damage. As it is now surplus to requirements, we have donated it to the Methodist Church under the care of Marion Coombe, who has agreed to continue to allow the printing of leaflets for nonprofit making community organisations in the Hayle area. Our contingency fund money has been distributed to various

[/www.hayle](http://www.hayle)



deserving Hayle-based organisations, and we have also donated £600 to the new Hayle Pump team towards start-up costs.

We would like to thank all those advertisers, contributors and readers who have supported the Hayle Pump, many of them since its inception in 1994, and we sincerely hope that they will give the re-launched magazine the same level of support. All of those associated with the original Hayle Pump are delighted that it has now resumed publication, and we wish it every success for the future. Long may the new team continue to pump out the local news and views!

*Goudie Charles.*

## Have Your Say!

### WIN a Bouquet of flowers from Flowertime!

Let us know your thoughts about the NEW Hayle Pump Newsletter. Which articles do you enjoy the most, and the least? How do you feel about more pages? The occasional colour cover? Any ideas or suggestions?

Drop your replies in to Flowertime or send by post or email to the editor. All replies will be entered into a prize draw to win a super bouquet of flowers, kindly donated by Flowertime of Hayle.

Don't forget to include your full contact details! GOOD LUCK.

## THERE'S ALWAYS LOTS TO DO AT PARADISE PARK!

We're open every day - make a visit to Paradise Park a regular event with a great value Season Ticket or Return Ticket.

- Wonderful wildlife - rare tropical birds, choughs, red squirrels & farmyard friends
- JungleBarn indoor play and Paradise Island outdoor play
- Themed birthday party rooms, great fun and we clean up!
- Otter Pool Cafe
- Halloween Party on 31st October



The  
**BIRD IN HAND**  
YOUR LOCAL  
PUB WITH ITS  
OWN REAL ALE  
BREWERY  
Cask Marque  
checked  
quality beers

Paradise Park, Trelissick Road, Hayle  
Open every day at 10am Infoline: 01736 751020 [www.paradisepark.org.uk](http://www.paradisepark.org.uk)  
Join us as a facebook friend!

Our cover photograph shows the Deputy Mayor Jayne Ninnes with Hayle Social Enterprise Trust, Trustees; Harry Blakeley (alias Woody) and Roger Weeks (alias Buzz Lightyear) at the official opening of the Screen Machine, which visited Hayle recently.

## Pioneerium Project

**Do the people of Hayle want a cinema with a steam pioneering theme social hub and events venue?**

The answer is a resounding yes with the Hayle Pioneerium project well and truly on the map!



### BIZ AND BYTES

**07874 647524    01736 755971**

If you require computer assistance, either training or to resolve a problem then give us a call. Visits arranged to suit you.

Looking after the home user and small business.

**WEBSITES • BROADBAND • TRAINING •  
COMPUTER SUPPLY • TYPING**



www.bizandbytes.co.uk  
enquiries@bizandbytes.co.uk



## LINDSAY'S DOG GROOMING

*Dog grooming for all sizes,  
breeds & coats.*

*Specialising in Poodles.*



For more information,  
contact Lindsay on  
**01736 753864 or 07792 849240**



*Situated at  
Connor Downs  
in Hayle*

*Local  
collection  
& delivery*

**The Pioneerium** is aiming over time to become Cornwall's first all digital multimedia, 3D cinema complete with performance and arts spaces, connected to a fresh and contemporary pioneering-themed, activity centre and cafe where, instead of the odd plant or two, star locomotives from York's National Railway Museum will stand.

All-weather event and exhibition areas will be provided for the community to use as they wish, along with state-of-the-art conference facilities.

As a unique and exciting precursor, a mobile cinema, The Screen Machine, played to packed houses every show over the August Bank Holiday





---

**Designer Frames**  
up to 33% discount

**Varifocals**  
from £119 complete

**Prescription sun glasses**  
from £59.90

**Rimless Spectacles**  
with 2 year anti-breakage  
warranty on lenses  
from £165 complete

**Photochromic Promotions**  
on Transitions/Kodak and  
Rodenstock lenses

---

**HAYLE**  
18 Commercial Road  
TR27 4DE  
**01736 753145**

**PENZANCE**  
21 Alverton Place  
TR18 2QP  
**01736 366105**

Weekend in Hayle. In fact, nearly every show was a sell-out, and tickets for the family blockbuster Toy Story 3 could have sold tenfold.

It was a great attraction for visitors to the town: however, the majority of tickets were bought by the local community. Hayle residents turned out in force, enjoying the experience of leaving the car at home and walking to the cinema – many for the first time in thirty years, some for the first time ever.

Local MP George Eustice, and Hayle's Mayor and Deputy Mayor came along to the premiere screening, as did Pirate FM's Bob McCreadie, who has already shown the project a lot of support.

As well as the films, movie-goers enjoyed refreshments from local food providers (mmmmm, Mr B's ice-cream...). The hand of the community was to be seen everywhere – the excellent short films shown before the main features, Hayle Town Band playing movie themes, the team working as bar staff and ushers... even Buzz Lightyear had a Cornish accent!

With crowds of lovely locals milling about, drinking wine and eating popcorn, it was a great opportunity to find out more about what people would like to see in Hayle, and to update them on the Pioneerium project so far. Trustee and architect Bob Mims has created a marvellous model of what the cinema/social

centre could look like; and talented local film-makers Ben Amos and Jack Reynolds directed a short film, Night and Day at the Pioneerium.

Many thanks to all the audience members who participated in our evaluation questionnaire: we'll publish the results on the website in the near future.



Interior of Screen Machine

And, as for the films themselves... Well, who would have thought that a truck could be so comfortable? And that 3D (Toy Story 3) really does make a huge difference? The amazing Ian came down from Scotland with the cinema, and acted as driver, projectionist, ticket man, and popcorn mopper-upper. The other films he showed were Inception, The Girl with

Our ice cream man was found lying on the floor of his van covered with hundreds and thousands.

Police say that he topped himself.



# Fernleigh BED & BREAKFAST

En-suite, Colour TV,  
Coffee & Tea making  
facilities in all rooms

👉 NON SMOKING 👈

26 Commercial Road  
HAYLE, Cornwall  
TR27 4DG

Call 01736 752166

mrploppy@fsmail.net  
Mike & Lyn Reffold

the Dragon Tattoo and Nanny McPhee and the Big Bang – a good range of films to suit a wide audience.

When the cinema-on-wheels was packing up to return to the Highlands, a small, sad crowd gathered to watch its departure. The most frequently asked question (well, apart from “Do 3D glasses make you dizzy?”), was “Do you think we really can have a cinema here again?” We didn't have to make up the title quotation – several people told us this.

The community has spoken. Hayle wants its own cinema and venue again – and this is just the start...

For more information please go to  
[www.haylepioneerium.co.uk](http://www.haylepioneerium.co.uk)

# Blushhh Lingerie

We have a fast growing reputation for THE place to go for measuring, fitting amazing lingerie, service and choice.

For many women the experience of being measured for a properly fitting bra can be daunting, and finding a supportive bra that is best suited to you can be difficult. However choosing the right bra is vital in making you feel comfortable. You also need to feel secure if you need to wear a prosthesis, and I am proud to support the work of breast care nurses at St Michaels' Hospital and The Mermaid Centre because once you have the correct bra they will be able to easily fit any breast form you may require. I always treat each lady with individual special care and you will be seen in my purpose built fitting room by appointment only, so your privacy is guaranteed.

It is certainly worth taking some time to be measured and fitted professionally to ensure you find the right bra for you.

Please give me a call to arrange an appointment at Blushhh and I will do all I can to help you. I look forward to hearing from you soon.

For out of hours appointments to suit you, call Bini at Blushhh.

49 Fore Street, Hayle TR27 4DX  
**01736 753440**

## PLANTECH

THE FRIENDLY RELIABLE SERVICE

- Lawns cut and borders weeded
- Hedges trimmed
- House, garden & building waste taken
- Garden clearance work
- Gravel, sand & topsoil delivered and laid
- Garage and loft clearances
- FREE no obligation quotes

 **01736 754401 / 07979 546434**

## Why.Dance comes to Hayle

Why.Dance and Theatre are opening a new dance and theatre venue at Guildford Road, Hayle. Our new venue enables us to provide our students with so much more, as we can offer 6 full days a week rather than 1 night a week, with various dance and theatre classes. We will provide all dance genres; from ballet to ballroom with a full schedule and in time will be employing staff to enable classes to run alongside each other. The venue opens up a whole range of opportunities from work to hobbies for all ages including mums with babies and toddlers or a venue where we can hold dance parties for birthdays; the list is endless.

We want to promote our venue as an opportunity for the wider community where everyone is welcome regardless of ability. There will be opportunities for those who wish to take their dance further and take dance related examinations, however we do not want anyone to feel pressured to do this, so specific classes will be run to provide this service. We at why.dance see this as an exciting adventure where our dance and theatre company will provide everyone with the chance to unleash hidden talents and explore a range of dance and theatre classes.

We believe that Hayle is an up and coming town and that we provide a service unlike any other as we work

with everyone regardless of age, sex, creed, race or ability. We look forward to welcoming old and new members to our venue, which we hope will open on September 1st, 2010.

The venue is secured, the work is being carried out but time stops for no one especially deadlines. I hear the question about "how much is this going to cost?" The answer is: "you will be surprised!"

*See our website for further details or email me on [markwhydance@yahoo.co.uk](mailto:markwhydance@yahoo.co.uk) or feel free to call on **07889 144703**.*

[www.whydancetheatre.com](http://www.whydancetheatre.com)

靈  
氣

## ONE DAY REIKI I WORKSHOP

***Learn this ancient art of holistic healing***

Saturday 13 or Sunday 14 November  
From 10 am till 4 pm at  
The Passmore Edwards Institute in Hayle

Cost £60 including manual.

For more information visit my website at  
[www.miriamnaccache.co.uk](http://www.miriamnaccache.co.uk)

For bookings, contact Miriam on 01736 758253  
(Booking is essential as numbers are limited)



**Want to play music?  
You're never too old!**

**Learn music the fun way  
with Graham Smith**

I'm a Registered Guitar tutor, a coach and session musician with over 30 years' experience. I believe that anyone can learn to play. I can help you to learn guitar, bass guitar and blues harmonica and to write songs and record them.

**Call me on 01736 740141**  
(based near. Penzance)  
email: [graham@calmtime.com](mailto:graham@calmtime.com)

## **Heylfest 2010**

***This year the festival was held over 3 Days, but it was very well attended and everyone I met remarked how good it had been again this year.***

The marquee went up on Thursday 29th July and was fitted out by members of Heyl Town Band with the stage area being constructed with help by Mike Nicholls. I would like to thank Mike on behalf of all at the Band.

Friday, 30th July, was the Community Market day commencing at 10:30 am, and very soon after opening the marquee was thronging with people. With lots buying and then going into

the refreshment area they kept the tea ladies very busy all day. In the Evening we had the Gallopers Horse race night and in the interval we were entertained by a group of belly dancers. With the bar doing a good trade it turned into a very good evening.

Saturday, 31st July, was the Modellers day, and we had a good demonstration from the Hayle Model Railway Club. There were bouncy castles and entertainment outdoors from 10:30 am, but unfortunately we could not have the Fun Dog Show because were let down and did not have enough time to arrange it with any other organisation. However lots of people came along and had a great day out. After the Hayle Summer Carnival we had the German Oompah Band from 9:00 pm with their new Musical Director and in the 7 Years in which I have organised Heylfest I have not had many better nights. The audience did not want the band to finish at 11:00 pm. What a great Night.

Sunday 1st August was going to be the Heyl Fun Day but, because of the rain we had to postpone it. Inside the marquee we had the Gweek Silver band playing for us and very soon the marquee started to fill with people wanting to eat and drink and listen to the band, and, once again we were entertained by the belly dancers. When the rain eased the bouncy castles were operating with caution outside, and we had the magic man again which was great for the children. Considering the conditions

the day went very well. For the Grand Finale Concert in the evening, after the Heyl Band gave a small concert we were proud to introduce to Heylfest the Tongwynlais Temperance Band from South Wales with their Musical Director Mr Philip Harper. They gave a thrilling concert which put a good finish to Heylfest.

**I would like to thank everyone who helped in during Heylfest this year especially as the ladies who served teas, cakes and sandwiches over the three days.**

*John Whear*

Heylfest was generously supported by Cornwall Community Foundation and Hayle Town Council.



**David N'jie**

PAINTER & DECORATOR



07944 156995



01209 831397

dn-jiepainter-decorator@hotmail.com

Trethannas Cottage, Praze-an-Beeble  
Camborne TR14 0LH



Police arrested two kids yesterday.  
One was drinking battery acid, the  
other was eating fireworks.

They charged one and  
let the other one off.



# FLOWERTIME



CHELSEA GOLD  
MEDALIST

**t: 0800 0560711**

**t: 01736 757006**

**e: [flowertime@btconnect.com](mailto:flowertime@btconnect.com)**

We stock a large range of fresh flowers, silk flowers, plants, greeting cards, vases & containers, jewellery, candles and much much more.

**NOW IN:**

Designer Jewellery by Carrie Elspeth & Culture Mix.

Handmade soaps by the Celtic Herbal Co

Delivery service available locally, nationally and internationally.

**[www.wesendflowers.co.uk](http://www.wesendflowers.co.uk)**

**[www.flowertimeflorist.co.uk](http://www.flowertimeflorist.co.uk)**

17 Penpol Terrace, Hayle, Cornwall, TR27 4BQ



## **HAYLE DAY CARE CENTRE** **Commercial Road, Hayle**

An affordable day care facility for the elderly of Hayle, St Ives and district

Transport • Freshly cooked meals

Also includes bathing and hairdressing  
Therapy and lively social interaction

Always a friendly welcome

**Call 01736 755000**

## **HAYLE ARCHIVE**

**Question 1:** Are you interested in the history of your town?

**Question 2:** Do you want to learn new skills and meet new people?

There is a wealth of archive material relating to Hayle, Harvey's Foundry and Copperhouse Foundry. Hayle Archive's aim is to collect and preserve that material enabling it to be seen and enjoyed by the general public.

A handful of eager volunteers have already started on this task; cataloguing collections, creating exhibitions and starting a digitalization

programme so that Hayle's fascinating history can be discovered on-line.

We are open Tuesdays and Thursdays 10.00 am – 1.00 pm, so come down and see us, have a chat and bring any relevant material you may have (photographs, books and papers). We are based at the Brewery Office in Sea Lane just up from the Cornish Arms.

Over the coming year we are going to undertake a joint project with the Passmore Edwards Institute Hayle to produce an exhibition to mark the 100th anniversary since the death of the famous philanthropist John Passmore Edwards.

We need volunteers to pull together information on this great man's life, help us create an interesting and educational exhibition and produce leaflets and online information.

**You can volunteer for as many hours as you want and will be provided with full training - if this sounds interesting then contact Laura Christon on 01736 757683, pop into the Brewery Office or you can find us online at [www.haylearchive.org.uk](http://www.haylearchive.org.uk)**

---

**Re-opening - Paul and Heather Dyer of the Foundry Gallery.**

Although with smaller premises they still provide many of the services that were available in their old larger premises.



# HEYL ST PIRAN SINGERS

We are back at rehearsals again having just had our August break, learning new songs and looking forward to future concerts. Our ladies choir started in 2008 with a gradual increase of new members. Our repertoire has increased a considerable amount and we have a good time learning new songs, with plenty of laughs. Fortunately our musical director, Ann, has a good sense of humour thus making for some really light-hearted moments, and some serious singing.

The ladies have held various events throughout the year, such as a stall at the Connor Downs School Fete,

a cream tea at a member's home, a concert at St Ives Parish Church and were guests of the Praze Hayle Male Choir at St Anta's Church in Carbis Bay.

In October we will be going to Holland, along with the Praze Hayle Male Choir and are greatly looking forward to this, our first big trip, as a choir. We will be travelling on coaches and initially will stop at Ghent in Belgium and then on to Alkmaar in Holland, where we are booked to do two concerts. We will then go on to Amsterdam and will give a joint concert with an Amsterdam choir called 'Koor aan 't IJ' and who sing in several languages. The trip is spread



## A New Cornish Book

### *Ventonleague - Hayle*

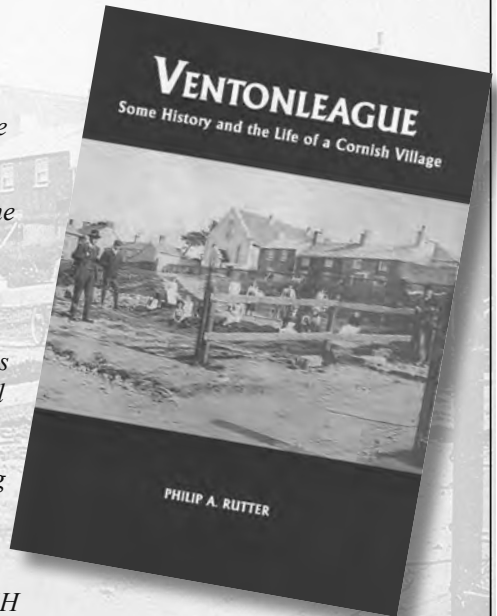
*Some History and the Life of a Cornish Village*

*Some outstanding local history of this Cornish Village which played a large part in the Cornish Industrial Revolution making HAYLE a Great Industrial Town in the South-West of England.*

*The close village community life and the events in this unique volume of history, with personal memories and old photographs.*

*"A wonderful edition which is already proving popular". (The Hayle Times 25th June 2010)*

*Available from the author: Philip A Rutter.  
5 Ventonleague Hill, Hayle, Cornwall TR27 4EH  
Telephone Number: (01736) 753273.*



over five days and gives the members time to enjoy the 'touristy' side of it as well.

The two choirs will be holding a concert with the above in mind, on 3rd October, at St Elwyn's Church, Hayle, at 8.00 pm. There will be no entrance charge but donations will be welcome and will be put towards the 'stained glass windows' fund.

The choir would like to welcome anyone who enjoys singing, to come along to one of our rehearsals. These take place every Thursday evening 7.30 pm to 9.30 pm, at Hayle Methodist Church. If you would like to be collected for that first rehearsal just contact one of the numbers below and that can be arranged.

If anyone would like more information on the above, please contact

*Ann Birch* **01736 752335** or  
*Teresa Davy-Thomas* **01736 753872**

**email:**

*teresadavythomas@btinternet.com*

**Website details:**

*www.heylstpiransingers.co.uk*

A man goes to the doctor, with a strawberry growing out of his head.

The doctor says, "I'll give you some cream to put on it."



## Johnny's Café | Hayle

For good quality fresh wholesome locally sourced food in a comfortable relaxed environment.

We offer breakfast, lunch, including daily specials, a choice of home made cakes, brownies, cream teas etc. various coffees, teas and cold drinks.

From November we shall be open again for our popular monthly themed evenings - bookings now being taken for Saturday November 20th 2010 - Greek Menu.

50-51 Penpol Terrace, Hayle TR27 4BQ

**Telephone: 01736 755928**

# Want a Free Book about The Hayle Area's History and Memories?

## Register Your Interest Now!

Hayle Oral History Project has been very busy all year. The first draft of the book about the Hayle Area called "Hayle's Tales and Trails" has been proofread by those checking for English and historical inconsistencies, so hopefully we'll have the real facts available in this publication. This community book has selections of memories recorded since the beginning of the project in January 2009. The oldest person we interviewed was born in 1913.

There are also articles written by local historians and experts on the Hayle Area, all who have offered their time and writing voluntarily. DVDs will be in the back of the book containing audio clips, whole transcriptions, short animations and some archive film. We've managed to get funding for the book from Heritage Lottery Fund, Cornish Mining Heritage, Hayle Town Council and Cornwall Council's Community Fund. This means that we can offer those involved in the project a copy of the book for free. We are also hoping to give up to 200 copies of the book to local libraries, schools, archive centres, Hayle Day Care Centre and to people in the community.

We will only be able to print very limited numbers (due to funding) unless, possibly, we can prove there

is more demand. If you are interested in a free copy of the book please put your name, a phone number and your email address, if you have one, onto a postcard and drop it into the Brewery Office on Sea Lane (behind the Cornish Arms) or send one in an envelope to Hayle Oral History Project, Brewery Office, 1 Sea Lane, Hayle, TR27 4DU and keep an eye on future Pump issues for news.

It is a case of first come first served; please only use this method (writing) for being on the list for books. Those who have been interviewed do not need to do this, your book has been reserved. Free postcards can be picked up at the library during usual opening hours and the Brewery Office on Tuesday and Thursday mornings.

Each postcard represents the desire for one book only and as there are limited amounts of books we'll offer one book per person. The launch date is the morning of 11 December 2010 in Hayle Library. At the launch there will also be the opportunity to buy books about the Hayle Area for example the St. Ives Bay Revisited with archive photos, the new Harvey's of Hayle printed by the Trevithick Society and Ventonleague by Phillip Rutter with authors there able to sign and dedicate them.

Email: [hayle.history@btconnect.com](mailto:hayle.history@btconnect.com)  
Telephone: **01736 753962**

[www.hayletaleshome.blogspot.com](http://www.hayletaleshome.blogspot.com)

## **Welcome to hayleonline.co.uk**

Hayleonline is a free web based forum, created for residents past, present or prospective to chat, moan or sound off about anything as long as it's legal!

Simply go to [www.hayleonline.co.uk](http://www.hayleonline.co.uk) and follow the simple instructions to create a user name and password and you will then be able to post your own messages.



## **SINGER & PFAFF SEWING CENTRE**

**Authorised Singer Service  
Centre for Cornwall**

**All makes serviced**



**11 John Street, Truro TR1 3JF**



**01872 225168  
01736 753811**

## **A Little of what you fancy at 'All Things Nice...'**

There is nothing quite like the rustle of a paper sweetie bag and the memories they bring flooding back. The warmth of winter mixture, a refreshing fizz of fruit buds or the delight of a raspberry ruffle treat. 'All Things Nice...' offers a taste of old traditions and a trip down memory lane in a traditional sweet shop beautifully placed at the newly refurbished Pratts Market, a perfect and pretty setting for this delightful experience. We offer kids party bags and a local delivery service for our "sweet towers" a great way to show someone you care... why say it with flowers when you can say it with Traditional Sweets! Call in to see what we are all about. *Claire.*



**Classes at the  
Passmore Edwards Institute**

Suitable for all ages and abilities

Classes run throughout the year

**Mondays 7.00-8.30 pm  
Tuesdays & Fridays 9.30-11.00 am**

Please phone Gwyn for details on

**t: 01736 740969  
m: 07815 945695**



## *All Things Nice...*

A traditional sweet shop offering "a taste of old traditions". Original weigh-out sweets, cinder toffee, chewy nuts, bon bons, Lion's wine gums and much much more.

Unit 3, Pratts Market, HAYLE TR27 4AB

**Monday to Friday 9.00 am to 5.00 pm**

## **NICK FARRAR** **WINDOWS & CONSERVATORIES** 8 MARSH LANE, HAYLE, TR27 4PS

- BESPOKE WINDOWS & CONSERVATORIES
- INTERNALLY GLAZED WITH STAINLESS STEEL SHOOTBOLTS
- WHITE/MAHOGANY/GOLDEN OAK
- CLEARLINE GLAZING
- FULL REPLACEMENT FACIAS & GUTTERING
- 10 YEAR GUARANTEE ON ALL INSTALLATIONS

For a free quotation call...

**01736 757818 or 07792 632635**



*because of*  
**Slimming World**  
*I'm ready to party!*  
*Carly from Liverpool*

*Read my story online at [www.slimmingworld.com](http://www.slimmingworld.com)*

**Connor Downs W.I. Hall**  
Turnpike Road  
Tuesdays 9.30am  
Faye 01736 711904

**Hayle Day Care Centre**  
Commercial Road  
Thursdays 5.00pm and 6.45pm  
Pauline 01209 215653

**SAVE**  
up to  
**£5**

**0844 897 8000**

[www.slimmingworld.com](http://www.slimmingworld.com)

*Slimming*  
WORLD

because you're amazing

## THE FARM SHOP

31 Penpol Terrace, Hayle  
TR27 4BQ

OPEN - 6 DAYS A WEEK  
8 AM - 5 PM

### FOR ALL YOUR LOCAL PRODUCE

Fruit, vegetables, plants and  
flowers, free range eggs,  
Cornish potatoes.

### NOW IN

Bunched carrots and beets,  
Autumn crop strawberries,  
Anemones and Primroses.



ALAN ORCHARD & SONS

Apprenticed served professional tradesmen

Carpentry & Joinery  
uPVC Facias • Roofing  
Building Works • Decking  
Kitchen Installation

 **01736 756687**

 **07787 148571**

27 Guildford Road, Hayle TR27 4PP

## To See a World in a Grain of Sand.

Many readers will be familiar with the famous quote of William Blake together with his 'Jerusalem' sung each year at the Last Night of The Proms, and including the words "England's green and pleasant land".

We first arrived in Hayle in January 1974; the street lights were out and the world faced an unprecedented energy crisis. OPEC had quadrupled its oil prices just the month before in response to American farmers having doubled the price of wheat. Food prices shot up and it was very evident that "England's green and pleasant land" as founded on oil. But history shows that in Blake's time it

was largely based on the unremitting toil of England's farm labourers. Was there a better connection between Blake's grain of sand, the substance of the Earth, and a green and pleasant land? We bought an area of sand on the Towans in 1975 and began the quest to find out.

In 1978 we discovered work had already been done by a Japanese scientist turned farmer and published in his classic book 'The One Straw Revolution.' It was only necessary to adapt his methods and wait for western science to catch up.

Nature works best through co-operation rather than conflict. The whole basis of life on the land depends on the two billion year old embrace between a plant and a fungus. The fungus mines the sand

and feeds the plant minerals; the green plant produces the sugars and in return feeds its hardworking partner. Yet more discoveries are showing how much the sustainable green of the planet ultimately depends on these partnerships. The huge bulk and biodiversity of rainforests also include trees that nurture each other below ground making use of another unlikely partnership between colonies of nitrogen fixing bacteria and the roots of their host, again in exchange for food; earthworms provide the airways through which the nitrogen in the air finds its way to these subterranean colonies.

Just as benefits are bestowed below ground, bounties are delivered above. Pioneering plants working on naked sand can deliver nutrients many times that of our orchard plants while at

the same time helping them to higher productivity. The forest stacks its produce like the supermarket and promotes its "lines" across the seasons. My vision of a pleasant and sustainable Earth is based on engaging in partnership with these hidden yet essential services that together can make Blake's vision a reality.

*Raymond Yarwood*  
*www.towansforestgarden.co.uk*  
*Member of The Agroforestry*  
*Research Trust Network*

**The One Straw Revolution**  
**is available from Permanent**  
**Publications, The Sustainability**  
**Centre, East Meon, Hampshire**  
**GU32 1HR.**

# JC ELECTRICAL

Your complete 24 hour Electrical Service

**Rewires • New Build • Lighting •  
Showers • Extra Sockets • Heating**

City & Guilds Qualified (Tests to BS7671)

Part P registered

Prompt and reliable friendly service

Free estimates and all work guaranteed

**Office: 01736 754543**

**Mobile: 07739 577549**



# FLOWERTIME



Flowertime Florist was established on the 18th September, 1989. The business was founded by Mark Nicholas at the age of 18. When the shop first opened it was situated inside Hayle shopping arcade. 10 years later the business was thriving but Mark decided to uproot and moved into the 'spinning wheel'.

After a further 6 years Flowertime moved again into its present address at 17 Penpol Terrace. As the business has expanded and grown, Marks mum and wife, also a qualified florist, have joined the team making a successful

local family run business. During these 21 years Mark has become the highest qualified florist in the Devon and Cornwall area, gaining the national diploma of the society of floristry and the American institute of floral designer's qualifications. Mark has demonstrated and judged nationally and has been invited many times to exhibit at the Chelsea Flower Show where he has gained numerous medals including gold.

Flowertime began by just selling flowers and plants, but over the years has expanded its range of products to include greetings cards, jewellery, handmade chocolates & soaps, candles, vases and glassware. Flowertime are the official stockists of Carrie Elspeth jewellery, LSA Glassware,

## HAYLE HOME FURNISHINGS

36 PENPOL TERRACE, HAYLE TR27 4BQ

**07949 620194**

NEW & USED FURNITURE,  
BEDS AND HOME ACCESSORIES

We will consider buying in recliner and fireside chairs, wardrobes and chests of drawers and pine furniture

SHOWROOM OPEN  
Tuesday - Saturday  
10.30 am - 4.30 pm

## Hayle CYCLES

**MOUNTAIN - ROAD  
- BMX SPECIALIST**



**Bicycle Sales and Repairs**

**BICYCLE HIRE:**

£15 per day - £75 per week

**OPENING TIMES:**

Mon, Tue & Thur 9 am - 5.30 pm

Wed & Sun Closed

Sat 10 am - 5 pm



**Tel: 01736 753825**

Penpol Terrace, Hayle TR27 4BQ

[www.haylecycles.com](http://www.haylecycles.com)

Celtic Herbal Company, Wendy Jones Blackett, Belly Button Designs and David Chapman Photography.

Flowertime provides flowers for any occasion, specialising in wedding and funeral flowers. Where possible, we prefer to sell locally sourced flowers and plants, supporting many local Cornish growers. Flowertime has a fully secure ecommerce site online at [www.wesendflowers.co.uk](http://www.wesendflowers.co.uk). We are able to deliver flowers locally, nationally and internationally through a network of associated florists.

Mark and the team would like to say a big thank you to their customers for the support over the last 21 years.

## HAYLE CAMERA CLUB

Pleased to Present an Evening of



Hayle Camera Club meets the 3rd Tuesday of the month at Passmore Edwards Institute, Hayle.

New members always welcome

Ring: 01736 753215 for more information

# BIGGLESTONS

TRADING IN HAYLE FOR OVER 130 YEARS



Summer, Autumn, Winter and Spring, we can supply 'most anything'  
Try us first for Hardware, Ironmongery, Paraffin and all your Garden Supplies

**01736 752219**

# The Latest From Hayle Library

Remember it's free to join and a warm welcome awaits you all. Your Library is situated on Commercial Road next to the Pay and Display Car Park. Library users may use the small free car park next to the Church. Please pay us a visit and support your local library, you'll be surprised by the treasures inside.

Do your bit to save the planet by borrowing books instead of buying them! We have a good selection of the latest fiction and non-fiction, talking books, DVDs and games.

Many of our services can now be accessed online [www.cornwall.gov.uk/library](http://www.cornwall.gov.uk/library) and you can contact us by email [hayle.library@cornwall.gov.uk](mailto:hayle.library@cornwall.gov.uk), or by telephone **0300 1234111**. Books can also be renewed on our 24 hour hotline **0845 6076119**

## Cornwall Neighbourhoods for Change - Free Passport to Work Course

This is a three day course free to anyone over 19, unemployed or works less than 8 hours per week. This is a fantastic opportunity to improve your employability skills in a fun and friendly environment whilst learning about writing your CV, job search methods, confidence building and interview techniques. The course starts on Thursday 7th October, please contact the Library for more information.

## Free IT Courses at Hayle Library

Would you like to gain an IT qualification? If so, Truro and Penwith College will be running a course starting on Thursday November 4th. This is free and open to anyone who hasn't already gained a level 2 qualification. Please contact the Library for more information or to book your place.

## UK Online

We have computers here which are free to use for Library members but if you are a complete beginner and would like to learn how to get online we would love to be able to help you with UK Online. Want to find out more? Come along to our taster session on 21st September, 9.00 am - 12.00 pm.

## Computer lessons

There are no exams or tests to worry about; it is all about getting to know and use computers in a useful and practical way. You will learn at your own pace and the lessons are tailored to your own interests. The lessons are charged at £3.50 per hour or £3.00 for customers on certain benefits.

## Public Access Computers

Library members may use the computers for 30 minutes free every day, concessionary members and children may have 1 hour free and two half hour extensions if no-one else is waiting. Visitors may use the computers for £1.80 per half hour or free with their home English Library card.

## Talking Books

Did you know you can now download audio books free to your home PC or MP3 via the Library web site [www.cornwall.gov.uk/libraries](http://www.cornwall.gov.uk/libraries) You will need your library membership number.

## Activities for children

Storytime with Abi - Every Wednesday 3.45 pm - 4.45 pm, lots of stories, activities and fun.

## Help with Homework

Library staff are always available to help students with their homework.

## Adult Activities

The Reading Group, Chapter and Verse meet on the 1st Wednesday of every month at 2.00 pm. New members are always welcome.

## U3A Writing Group

Meets every other Thursday at 10 am, for more information please contact Chris **01736 759558**

## Tourist Information Centre

The Tourist Centre is open during Library hours and can provide useful information for tourists and locals, including bus timetables, leaflets, maps, tide timetables, information on beaches, local events and much more. We can also check the availability of accommodation and make bookings with registered accommodation providers.

Telephone **01736 754399** or email [hayletouristinformation@cornwall.gov.uk](mailto:hayletouristinformation@cornwall.gov.uk)

## Our opening hours are

Monday, Tuesday, Wednesday and Friday 9.00 am - 6.00 pm, Saturday 9.30 am - 12.30 pm and we are closed all day Thursday.

We would like to hear from you if you have any comments or suggestions regarding the services we offer and we look forward to seeing you soon.

I went to the butchers the other day and I bet him 50 quid that he couldn't reach the meat off the top shelf.

He said, "No, the steaks are too high."



## LUCY KEMP JEWELLERY



Contemporary silver, gold & semi precious jewellery and gifts all handmade on site.

Please come in and look around.

**Orders being taken for Christmas.**

**Payments scheme offered.**

**Classes Now On!**

Unit 2, Pratts Market, Chapel Terrace  
HAYLE TR27 4AB

[www.lucykempjewellery.co.uk](http://www.lucykempjewellery.co.uk)

**Bring this advert to receive  
10% off your purchase**

Not valid with other offers. Valid until 31.10.10



## Hayle Harbour Trust

Back in January, the Hayle Residents Association called a meeting to discuss the Hayle Harbour. There was some concern that the original plans for the harbour were being changed following a new application by ING to build a supermarket on South Quay. The well-attended meeting called for the creation of a Friends of Hayle Harbour (FOHH) with the task of seeking to bring some or all of the harbour into trust ownership for the benefit of the people of Hayle.

Following that meeting, a charitable trust was formed called the Hayle Harbour Trust Ltd. (HHT). Soon afterwards Cornwall Council concluded the negotiations with ING and the planning applications were approved. Given that the objective of bringing the whole harbour into trust ownership was unlikely at this point, the Trust focused on identifying parts of the harbour that would not be developed by ING and yet could be developed for local benefit.

Two areas were identified for early discussion with ING: the old railway line leading to Hayle Station and the Triangular Spit past Carnsew Pool out to the estuary. ING's public relations person, Gary Cartmell, was

## Neil Wade Motor Engineer



**MOT Car and Motorcycle Testing Centre**  
**Providing servicing and repairs to all makes of vehicle**

Diesel & Catalyst Testing ■ Servicing ■ Repairs  
Wheel Balancing ■ Exhausts ■ Tracking ■ Tyres ■ Batteries

**CENTRAL GARAGE** 10a Hayle Terrace, Hayle TR27 4BS

t: 01736 756512 m: 07990 981546  
home: 01209 610651



able to arrange meetings between FOHH and ING's management team and these proved very positive. An outline protocol was discussed and it was agreed to focus initially on the Station Approach. Following a further meeting and a visit to the site, an accord started to emerge whereby HHT would produce a plan detailing how the land would be cleaned up, the historic sand drag cleared and brought into view, amenities such as play areas added and long-term maintenance considered. In return, ING would consider transferring the land for public benefit.

The Trust is now preparing a detailed plan for clearing the site and we need your help. We need volunteers,

equipment, company support and professionals to assist in making the area a marvellous recreational area for the people of Hayle.

If you are willing to give a little time to helping us, please email: [chairman@hayleharbourtrust.org.uk](mailto:chairman@hayleharbourtrust.org.uk) or drop a note addressed to Hayle Harbour Trust in the letter box at the Passmore Edwards Institute on Hayle Terrace.

A man walked into the doctors, he said,  
"I've hurt my arm in several places"

The doctor said, "Well  
don't go there any more"



## Lavenders blue Garden Nursery

**Locally sown, grown and  
nurtured plants**

*A range of Perennials, Shrubs,  
Herbs, Grasses, Climbers and  
Seasonal Bedding Plants available*

**Penpol Avenue, Hayle TR27 4AQ**

**01736 754844**

*Look for the 'garden open' sign*

*Open most sunny days and  
maybe some drizzly days*

**Free deliveries in Hayle area**

# FRESH

**Take Away - Eat In**

**We serve freshly cooked  
food - homemade cakes  
and delicacies - Cream Teas  
Breakfasts - Tea & Coffee -  
Lunches - Seating Outside**

25 Penpol Terrace, Hayle TR27 4BQ





### **Hayle Gig Club:**

Club Captain 2010 Gareth Critchley

The clubs website address is

[www.haylegigclub.com](http://www.haylegigclub.com)

The clubs e-mail address is

[haylegigclub@googlemail.com](mailto:haylegigclub@googlemail.com)

### **Hayle Table Tennis Club - For Fun:**

Hayle T.T.F.F. has now been up and running for 3 years. We meet every Friday from 2.00 pm to 5.00 pm at Hayle Methodist Church Hall and welcome allcomers over the age of 16 years (under 16s are welcome with a responsible adult). We charge £1.50 per session and supply tables, bats, balls and playing partners together with soft drinks. We play for fun but you can find keen competition if you desire! If you feel like joining us just drop in one Friday for a taster session, you will be made very welcome. Any further details can be obtained from **01736 755757**.

### **Hayle Runners:**

#### **Sports Day Success**

Fun and food were on the agenda when Hayle Runners families and friends gathered together to have a sports fun day and barbecue last Sunday at Hayle Rugby Club to remember one of it's members. The club held Bob's sports day and BBQ in memory of Bob Philpotts from Stithians who died suddenly in February this year. The sports day was organised by Phil Rowe and supported by some of the clubs coaching team

competitors competed in a range of activities, including hurdles, javelin, long jump, skipping as well as bean bag throwing.

More than 40 participants competed in a combination of team competitions and an individual egg and spoon race before enjoying a barbecue prepared by the Rotary Club of Hayle with sweets and salads prepared by club members. Andy Moore, Hayle Runners President felt the day was a great success.

'The club had wanted to have an event in Bob's memory and we felt he would have been pleased with the sports day. It was very much a family event, everyone enjoyed themselves. It was quite competitive at times but the important thing was that people had fun. We are very grateful to the Hayle Rotary Club for helping with the barbecue and to the Rugby Club for the use of the field which helped make the day a success.'

Hayle Runners Training nights are held at Hayle Rugby Club on Tuesday and Thursday at 7.00 pm where runners of all abilities are supported by coaches and welcomed. Coaching support is also available at Carn Brea track on Thursdays at 7.00 pm. Details from the clubs website [www.haylerunners.co.uk](http://www.haylerunners.co.uk)

### **Hayle and District Bowling Club:**

The bowling season is almost at an end for this summer with some notable successes - two ladies winning the

Bickford tournament, four men being runners up in the Western Area County Fours and other competition wins.

Both ladies and gents leagues were completed with good results bar one for our club which is only in its fourth year with many new bowlers.

Next stage is the winter season and the club will be running the Wednesday afternoon games and Sunday mornings for members or any new person interested in trying their hand at bowling.

The Short Mat section of the club has been a success with games being played in the new clubhouse at Ellis Park. The club operates two mats and have league games on Tuesday evenings and Thursday afternoons, there is also club night on Wednesday evenings and is in use at other times during the week for practice and competitions. Anyone interested in trying Short Mat bowling can ring Ray on **01736 754645**

The Bowling Club was involved with the Community Day organised by the local police, the club provided refreshments and organised some target bowling for those who wished to try out their skill. At the same time a mixed league game was taking place thus showing people the game. The club agreed to give 50% of all income on that day to St Julia's building fund which has now been done.

We wish to thank everyone who helped in any way and supporting the bowling club which is a community project, anyone interested in joining us would be welcome.

*John Wallis, Treasurer.*

## Hayle Royal British Legion

Poppy appeal 2009/2010 will close at the end of September, & Hayle & district raised over £8,800 pounds; an excellent figure. Well done everyone, your support is much appreciated.

Poppy appeal 2010/2011 will be launched at the end of October. Collectors will be out & about in the two weeks leading up to the weekend of Remembrance Sunday which is on November 14th.

Service at St. Elwyn's church will start at 9.30 am taking on a new format this year, followed by a parade to the War memorial for wreath laying. Please come and join us.

The branch is looking for more Poppy collectors, so if you can help, or if anyone who doesn't normally lay a wreath, especially new organisations, would like to order one, please contact P.A.O Shirley Hayes on **01736 754023** or **01736 752619**.



Pictured here are members of the branch along with Hayle Air Cadets who took part in the summer carnival with their VE VJ street celebrations float . We won 3rd prize, thanks to all involved.

# wave hub

**Over the last couple of months a little bit of history has been made in Hayle with the installation of Wave Hub.**

Wave Hub is a £42 million project developed by the South West RDA (Regional Development Agency) to place a giant electrical 'socket' on the seabed about ten miles out to sea and connected to the National Grid on shore.



It will be used by companies pioneering new technology to generate electricity from the power of the sea. Basically they can plug their wave energy machines into Wave Hub and monitor how they perform in real conditions and over a long period

of time. And because Wave Hub is connected to the National Grid they can also sell any power they generate.

There are four berths available at Wave Hub so in the next few years we expect to see a variety of new technologies being tested.

The first wave energy device coming to Wave Hub is called the Powerbuoy and is being developed by a company called Ocean Power Technologies. We expect them to install their first machine in 2011/12.

Installing Wave Hub proved quite a challenge as you may have heard on the local news or even seen for yourself from the dunes at Harvey's Towans.

We had to lay a 25km cable, weighing around 1,300 tonnes, from the beach all the way out to the Wave Hub site. Problems with the flotation system that our contractors were using meant we had to have a few goes before we got the end cable ashore, but we got there in the end.

The Wave Hub itself, which is a 12-tonne steel chamber that splits the main cable four ways - one for each berth - was installed in the seabed at 3.14 pm on Friday, September 3.

Since then the cable has been buried under the seabed for the first few miles offshore, and thereafter with 80,000 tonnes of rock to secure it in place.

Our aim in building Wave Hub is to make Cornwall and the South

West a centre of excellence for the development of wave energy.

With Wave Hub now installed my job is to attract more wave device developers to use it and we're already seeing a lot of interest around the world. I'm going to be based in Hayle in an office in John Harvey House in Foundry Square that we have just moved into so I hope to become a familiar face around the town.



Opposite page: pictured Guy Lavender in front of HM Nordica

Above: Wave Hub being overboarded

## Sue's Fabric and Wool Shop Has Moved!

I am now in the warm and dry of the newly refurbished Pratts Market. Same great service and prices; lots of new lines in. Wool and Christmas fabric now in stock. Come to knit and natter every or any Tuesday from 2 pm. Bring your knitting and a smile – we would love to see you!

## Attention!!

**Do you, or any one you know suffer from -  
Arthritis, Eczema Dermatitis or I.B.S.?**

Fear not and suffer no more, help is now available, locally.

We have a wide range of products, all based on the highest quality and concentration of pure **Aloe Vera**, a natural plant that has over two thousand years history of fantastic healing.

All products carry a no-quibble, full refund guarantee, so what have you got to lose by trying them?

to arrange a free advice session  
contact Brenda on  
**01736 757428** or  
[westwoodpark@btinternet.com](mailto:westwoodpark@btinternet.com)



## **Bloomin' heck, it's GOLD again!!**

On the morning of Thursday 16 September at the unearthly hour of 5.15 am, a small but intrepid band of Hayle in Bloom members gathered at the Commercial Road Car Park for the trip to Bath for the presentation ceremony of South West in Bloom 2010.

It was a long journey, but we eventually arrived in time for the 'In Your Neighbourhood' prize giving. This is a scheme whereby groups of people are rewarded for their hard work and dedication in making a small patch of their environment a better place. Hayle won four times -

for the King George V Memorial Walk, deemed outstanding, Millpond Gardens, Library Wildlife Garden and the Adopt-a-Plot Scheme. We were pleased that Camborne, Truro, St Just and St Ives also won awards.

After lunch, and a stroll around the beautiful city Bath, (and it really is lovely) we gathered once more in the Assembly Rooms.

I am delighted to report that Hayle won Gold, and in a very close finish, winning by only 2 points, we also won the SWTA cup. "Our Mayor, Cllr. John Bennett and chairman, Margaret Tanner, were there to receive the cup." The judge said, tongue in cheek, that it was the delicious lunch they were served that clinched it! Thank



**Webb & Philp Ltd**  
established Since 1972



**How Safe is Your Home?  
Call us for peace of mind**

Domestic, Commercial & Industrial Installations  
Maintenance / Electrical Inspections / Tests & Reports Given

Unit 2, Marsh Lane Industrial Estate, Hayle TR27 5JR

**Telephone/Facsimile 01736 753651  
Mobile: 07768 210227 or 07976 565303**

you Paradise Park, I know he was joking but it WAS a delicious buffet, you did us proud again.

So we came home, whaked out but happy, I would just like to say "thank you" to everyone who contributed to our success.

*Sarah Turk*

As a child, the wicked magician always wanted to saw people in half.

Was he an only child?

No, he had lots of half brothers and sisters!



# PILATES

Private tuition from ante-natal & rehabilitation to advanced level now available at the Cornwall Chiropractic Clinic, 21 Foundry Square, Hayle.

**Tel: 01736 759088**

Sessions every Weds 3-7pm.

**Beginners group class  
Weds. 7.30-8.30pm @  
Hayle Community School**

To book a place please call  
**Emma on 07879 483106**  
[www.emmas-pilates.co.uk](http://www.emmas-pilates.co.uk)

## Do you enjoy singing? **LOCAL VOCALZ!**

A new lively adult choir for the West Cornwall area, singing a wide range of music.  
Mondays, 8.00 pm to 9.30 pm at Passmore Edwards Institute, Hayle  
why not come along to a rehearsal?

£3.00 per session  
Music reading desirable but not essential - we'll teach you!

**Details 01736 759944**  
[www.cornwallcommunitychoir.co.uk](http://www.cornwallcommunitychoir.co.uk)

## MUSIC LESSONS

Piano, keyboard, organ, singing and theory of music

♪ Beginners to diploma level

♪ Adults and children

♪ Examinations or fun!

♪ No group tuition whatsoever — strictly "one to one" basis

NEIL SHEPHERD

**Details 01736 759944**  
[www.neilshepherd.org.uk](http://www.neilshepherd.org.uk)

# The Council Corner



## **Cemetery and Allotment Progress Report**

The Clerk was finally able to advise the Council, at its meeting on Thursday 2 September, that the purchase and leasing arrangements for the Glebe Land at Phillack had been completed on that day. The official order has been given to CIB Lello Plant Hire, the appointed contractor, and work will start on site this month. After the work has started and a finish date has been agreed the Clerk will begin the process of writing to people on the waiting list, in the order in which they applied, to invite them to select their preferred plot and sign tenancy agreements. There will be a total of 40 plots available which includes 14 larger size (100sq m +) and 15 medium size (50sq m +) plots and a further 11 small/short term tenancy plots. These plots will cost between £30.00 and £75.00 per annum. Parking will be available on site and there will be access to water. No sheds or greenhouses will be provided however tenants may erect their own providing they meet the Council's specifications.

## **Hayle Walk for St Julia's Hospice Appeal Supported by the Mayor and Hayle Town Council**

A total of 84 walkers participated in the St. Julia's Hospice Appeal walk on Sunday 12 September, with over 50 of these choosing to join the Mayor on the 5-mile tour along the coast path and through Dynamite Towns. A combination of

members of the Cornwall Hospice Care fund raising team, volunteers from St Julia's, town councillors and local residents all pitched in to ensure the event ran smoothly. Hayle Samba Band entertained both the volunteers and walkers and helped to create a truly lovely atmosphere. The weather was perfect for the walk and a good time was had by all. At the time of going to print the money was still coming in but it seems likely that a figure nearing £3,500.00 will be raised. However, it is not too late to support this important fundraising event. Please either send donations to Julia's Hospice, cheques made to the St Julia's Hospice Appeal, or visit the Town Council's website to donate on line. Thank you to everyone involved.

**Hayle Aquathon Series** - The Town Council, with the support of Hayle Tri, ran a series of three aquathons through the summer season. The aquathons were open to persons over the age of 13 and comprised a 200 m swim in the Hayle Open Air Pool followed by a 2 mile scenic run through the town. The number of entrants for each event steadily increased and it is hoped to make these events an annual occurrence. The money raised from holding these events is adding to the fund for the long term development of the facility. The ambition is to heat and cover the pool to provide an all year round facility.

Many local businesses contributed and assisted by providing refreshments and/or gifts for the category winners. Thank you to Copperhouse Jewellers, Bookers, Jewson Ltd, Penzance Leisure

Centre, Co-op and Country Skittles for all of your generous sponsorship.

### **King George V Memorial Walk** -

Currently, the Town Council is still making efforts to determine the precise status of the Walk and will also continue to seek ways of restricting vehicular access on certain days and providing for the quiet enjoyment of the Walk by other users. Although a period of consultation has occurred and many people responded the Town Council would welcome further views regarding the possibility of closing the walk to vehicular traffic on Sundays, except for access.

**Small Grants Available** - If your group is in need of new equipment, kit or requires funds to secure other sources of funding for larger projects please contact the Town Clerk's office for an application form. The Council's Resource Committee considers grants quarterly; the next meeting is scheduled for 14 October For consideration at that meeting please submit your completed application form by 7 October 2010.

**Further information on the above or any other issues can be obtained from the Council website.**

[www.hayletowncouncil.net](http://www.hayletowncouncil.net)  
[townclerk@hayletowncouncil.net](mailto:townclerk@hayletowncouncil.net)

### **Hayle Town Council**

Hayle Community Centre  
58 Queensway, Hayle TR27 4NX  
**01736 755005**

## Being Sovereign

*How to freely command the life you want*

There is a degree of freedom in sovereignty that no other state offers.

Can we all be kings or queens?

Certainly, if you take a risk to clear your life of old issues and become attuned to who you truly are.

- uncover your authentic self
- find support in your heritage
- understand the meaning of life
- discover practices to keep you on track

Learn the wisdom of mystery schools, ancient practices, the power of the natural world and the joy of being truly Man and truly Woman.

This course is for those who really want to discover their magnificent self. Over almost a year, facilitator Lynn Forrest will navigate a steady path to personal freedom, inner wisdom and spiritual practice.

Beginning 5th - 7th November 2010 and including 3 further weekends in March, June and September 2011, these fully residential modules build to a sustainable way of life to enhance your health, wellbeing, prosperity, relationships, work and happiness.

*Live a little, laugh a lot,  
love above all*

Cost: £287 per module or  
£950 (discounted cost for all 4)

**Bookings: 07814 68829**

Venue: Boswedden House, St Just  
Cornwall TR19 7NJ (fully residential)

Travel to and from the venue is not included

[www.lynnforrest.org](http://www.lynnforrest.org)  
[www.boswedden.org.uk](http://www.boswedden.org.uk)

## Welcome from the Mayor

I am extremely pleased to be able to welcome the Hayle Pump back after what seems like a very long time. In fact, we have only missed three issues following the serious fire at Pratts Market in February, but to avid Pump readers that was a great hardship to have to bear.

The outgoing team deserve our sincere thanks for having laboured mightily, some right from the first issue, to bring us our bimonthly helping of local news, letters, announcements, cartoons and quizzes – and an important source of information on local businesses. For their efforts, the Hayle Pump team was recognised as Hayle's Organisation of the Year in 2009. Thank you.

Now we have a new team headed up by editor Brianna Breeze and I know she will be introducing the rest of her team elsewhere in this issue. Thanks to Brianna, and the other volunteers who refused to let the Pump disappear, we can continue to look forward to our unique, quirky but inestimable newsletter, I hope, for years to come. Keep on Pumping!

*Cllr. John Bennett*  
Town Mayor

## SUPPORTING CORNWALL HOSPICE CARE

Practitioners at **Cornwall Chiropractic Clinic** are donating a number of hours to support CORNWALL HOSPICE CARE. They are offering a limited number of treatments each month for the rest of 2010 in return for a MINIMUM £5 DONATION. The funds raised will be donated to the charity, which provides hospice care at St Edgcumbe in St Austell and St Julia's in Hayle.

To take advantage of this offer and raise money for this local charity, please contact the clinic on **01736 759088**.

Limited spaces - act fast!

*ccc*  
CORNWALL CHIROPRACTIC CLINIC  
— maintaining your lifestyle —

Now Available at the Clinic

Chiropractic	Sports Injuries
Chiropody/Podiatry	Hypnotherapy
Holistic Therapies	Acupuncture
Diet & Nutrition	Pilates

Tel: 01736 759088  
enquiries@cornwallclinic.co.uk  
www.cornwallclinic.co.uk

21 Foundry Square, Hayle, TR27 4HH

# Praze Hayle Choir

**The Choir has been enjoying a busy series of engagements since details were last seen in the pages of the Pump.**

In June we sang on the harbourside at Porthleven before an appreciative, if rather cold, audience (conditions were not exactly perfect!) but Connor Downs' fete provided much sunnier and warmer weather-as it always does- for another performance later in the month.

July saw us at the Blue Anchor in Helston and again on the harbourside in Porthleven. Concerts were held at St Anta's church in Carbis Bay and in the parish church in St Ives - both of these in conjunction with the ladies of the St Piran's choir and under our joint musical director, Anne Birch.

The Carolaire in Porthleven is a regular engagement for the choir in August and a successful concert, alongside the town's band, was performed to a large and appreciative audience. This month also saw us at the St Aubyn's Arms in Praze singing in their garden and afterwards-where it was warmer and drier-inside. A most convivial evening was enjoyed by all.

Our social calender has noted a remarkable 90th birthday party in August for one of our most stalwart and valued members, Hamilton Hawkins.

## CORNWALL COUNCIL



John Pollard  
North Ward  
07967 272808



John Coombe  
South Ward  
01736 752831

## CORNWALL COUNCILLORS for HAYLE

Contact us directly  
or through the

**ONE STOP SHOP**

**0300 1234 100**

Drop-in surgeries held there on  
the first and third Saturdays  
of each month.

Over 150 people attended the party held at the Hayle Day Centre and choir members were delighted to be able to serenade their senior colleague on his special day. August also saw the Choir holding its first Summer Fair at Phillack Church Hall - an enterprise that will, no doubt be repeated in subsequent years.

Looking forward, the Choir will be participating in the Mayor's Service at St Elwyn's on October 3rd and on November 26th will be taking part in the carol singing that will accompany the switching-on of Hayle's Christmas lights. Carol services at Ventonleague Chapel and at St Elwyn's will follow in December.





*Shelley's  
Furniture Emporium*

**Vintage, Shabby Chic'  
Household and  
Decorative Items**

10.00 am - 4.00 pm  
Monday to Saturday  
**01736 756808**

Pratts Market, Hayle Shopping Arcade,  
Foundry, Hayle TR27 4AB

Considerable anticipation attends the choir's departure on October 8th for a five day trip to the Netherlands alongside the ladies of St Piran's and during which concerts are to be held in Alkmaar and in Amsterdam.

This will be the Choir's first trip abroad, and is hoped, not to be its last. Details of the Choir's 'adventure' will, we anticipate, be made public in a later edition of the Pump.

37 members sing a wide variety of entertaining, moving and stimulating songs. Singing in a choir has been scientifically proven to be good for you - why not come along to the Hayle Methodist chapel any Tuesday evening, have a listen, and perhaps join us?

**T** Come to **O**

**BLEWETTS  
TOY SHOP**  
of Hayle

For a wide range of  
toys & games

**LEGO ● SYLVANIAN ● HORNBY  
● PLAYMOBILE ● BEN 10 ●  
TRANSFORMERS ● JIGSAWS ●  
WARHAMMER GAMES**  
and much much more

**19 Penpol Terrace, Hayle  
TR27 4BQ  
01736 753012**

**Y** **S**

Congratulations to the Pump  
on your long awaited return  
From Colin, Mike and Ruth

**COLIN'S**   
**MARKET GARDEN**

**MICHAEL MEADOWS  
PAINTER AND DECORATOR**

Plus other jobs  
no job to small

T: 01736 758482  
M: 07981 488450

Free estimates



# HIGH OCTANE HAYLE

The afternoon of the 1st May 1942 found pilot Tony Bartley at 30,000 ft over Lille in France as part of a Spitfire squadron providing “top cover” for an offensive operation. Normally this height would have provided them with a tactical advantage but on this occasion they were attacked “from above” by a number of the latest German FW 190 fighters. For the next 20 minutes a pitched battle raged that took the aircraft down to sea level with Bartley attempting to shake off several of these new high performance fighters. With canon shells now hitting the water around him it appeared

that even though he could outturn his opponents he could not outrun them across the Channel, but when all seemed lost one of the 190's overshot his attack and pulled up in front of the Spitfire. Seeing an opportunity to reduce the odds Bartley slammed the throttle into emergency override boost, pulled up into a “prop hanging” climb, gave the 190 a short burst of fire as it crossed his sights and promptly sent it spinning down into the sea. This aggressive move paid off as the other enemy aircraft broke off and Bartley was able to limp back to Biggin Hill with his damaged machine. His survival was due to several factors; his skill, the Spitfires legendary manoeuvring ability and the Rolls Royce Merlin engines



## COLIN'S MARKET GARDEN



Pratts Market  
Foundry Square,  
Hayle TR27 4AB

Make a visit and support your Local Traders.

Find us outside the front of Pratts Market  
Just look for the flags

- Fresh Fruit & Veg.
- Local Cornish Farm Produce.
- Cornish Potatoes of Various Varieties.
- Local Green Veg & Free Range Eggs.



Make us your local destination for all your five a day shopping

ability to give an emergency combat boost of extra power.

**Another factor was the engines ability to provide this extra power without destroying itself, with a critical part of the High Octane fuel required for this, being produced hundreds of miles away on a Quayside at Hayle in Cornwall.**

In 1938 The British Government took the decision to secure future supplies of High Octane aviation fuel that was a vital requirement for the new high performance aircraft engines then coming into service. Limited supplies of this fuel had been obtained from the USA but it was considered that with a potential war looming this supply was

vulnerable to disruption and a national production capability was required.

Two of the main additives to be added to the best petroleum spirit to give it a "High Octane" value were Tetraethyl Lead (TEL) and Dibromoethane. (DBE). In practice it meant that engines could be run with a higher compression ratio and also be "supercharged" for more power.

The decision was made to produce DBE at North Quay Hayle using the warmed cooling water from the power station (Cornwall Electric Power) as the main supply to extract bromine from seawater. In fact the Power Station was heavily involved in providing both the basic input structure plus the warmed seawater.

# LEARN **2** DRIVE

in a friendly, relaxed environment with a patient and reliable approved female driving instructor

Beginner, Refresher and Intensive Courses

Theory Tuition ● Motorway Tuition ● Hazard Perception  
Parallel & Bay Parking ● Pass Plus  
Discount Packages available

**Victoria Morgan-White**

**T: 01736 752596**

**M: 07764 485328**

**e: victoriamorgan06@aol.com**

Therefore Hayle became one of the main producers that provided the High Octane fuel additive for most of our aircraft including Hurricanes, Spitfires, Lancaster's and Mosquito's. Having provided this most important product since 1940 the plant closed in 1973 and most of the site was cleared.

### Technical details

The advantage of using "High Octane" fuels in service aircraft meant more power could be obtained from the new engines (by boosting) without the old problems of "detonation" (pre-ignition or pinking). It was found that the addition of a lead additive in fuel would provide this result but also caused fouling of the spark plugs and valves. The blending of DBE as a cleaning agent with the

TEL enabled the engines to run at high power without fouling. The importance of this "High Octane" situation was clearly demonstrated by the ability to eventually nearly double the power of a Merlin engine by extra supercharging and mixture cooling without increasing its capacity. By comparison the engines in the German aircraft were larger and heavier for a given power output.

Although the actual process and production plant has now gone the surviving support buildings on North Quay Hayle are now called the "Octel" units and also the Quayside Café, however the site was also known as ICI and the following list is how the lineage developed.



## **CENTRAL GARAGE**

**CAR SALES AND FILLING STATION**



...your local petrol station

### **Now in stock**

Coal, logs and kindling, Calor Gas, Camping Gaz

Wide selection of hot & cold drinks, snacks, sweets and groceries

### **Get yourself ready for winter**

Antifreeze, Screenwash, De-icer, De-misting cloths. and a large range of car accessories

**Central Garage offers a large selection of quality used cars and can be found online**

[www.centralgarage.info](http://www.centralgarage.info)

**OPEN EVERY DAY 7.00 AM - 9.00 PM**

6 Hayle Terrace, Hayle, Cornwall TR27 4BS

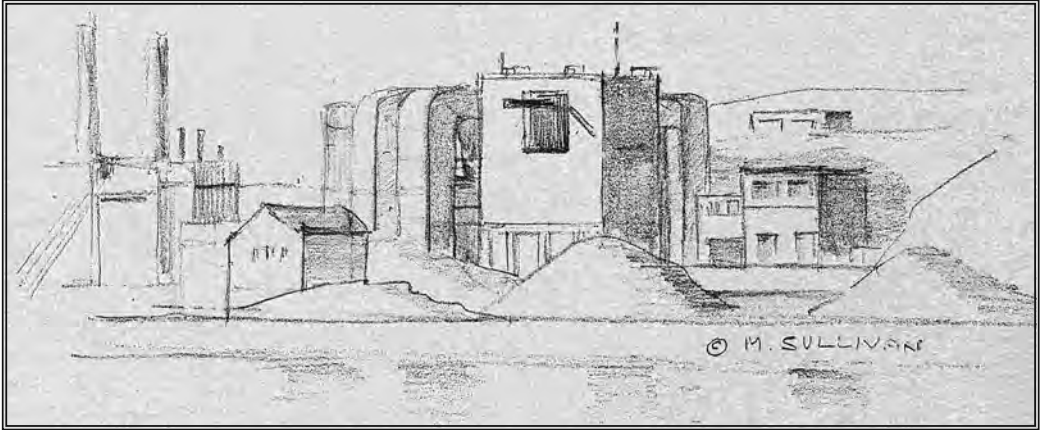


**01736 755885**

1938 British Ethyl Company formed as a joint company by ICI Alkali and Associated Ethyl to set up and manage the Hayle operation. This is the original company that worked in conjunction with Cornwall Electric Power (formerly Edmondson's - later SWEB)

By the end of the war the company became Associated Ethyl Corporation.

In 1961 this became Associated Octel - *Peter Channon 2010*



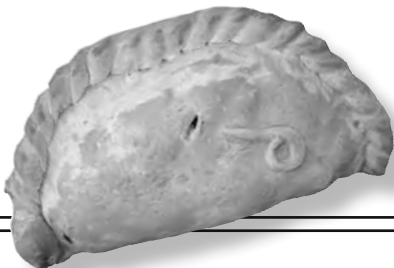
# PHILP'S

Famous Pasties

**BAKING 7 DAYS A WEEK**

**For the great taste of Cornwall's  
premier pasty makers with over  
50 years experience**

**VISIT US NOW AT ONE OF OUR SHOPS**



ESTABLISHED 1958

1 East Quay,  
HAYLE TR27 4BJ  
**01736 755661**

1 Foundry Hill,  
HAYLE TR27 4HL  
**01736 753302**

Market Place,  
MARAZION TR17 0AR  
**01736 753302**

The Square,  
PRAZE an BEEBLE TR27 4BJ  
**01736 755661**

Cabinetmakers & Joiners.  
**JOHN  
ANDREWS**  
*Traditional Bespoke Woodwork*

Traditional Windows  
Doors & Staircases

Hardwood or Softwood

Entrance Gates

Memorial Bench Seating

Joinery Fitting Service

m: 07765 341616  
t: 01736 741064



**40 Fore Street, Copperhouse  
Hayle TR27 4DX**

For all of your sporting equipment,  
clothing, and fishing tackle

 **01736 752238**

## **CAN YOU HELP SAVE HAYLE SAMBA COMMUNITY BAND?**

For various reasons the membership of the Hayle Samba Band has dwindled and new members are urgently needed.

**A meeting will be held on  
Wednesday 6 October at 7.30 pm  
in the upstairs meeting room at the  
rear of the Royal Standard public  
house in Hayle.**

If you are interested in keeping the band alive and would like to learn to play any of the instruments, or can already play, please come along.

We are also interested in anyone who has experience, or would like to learn to be a band leader to help out. Contact **01736 754976**.

If not enough interest is forthcoming, the meeting will be used to formally disband Hayle Samba.

*Thanks to Penzamba for kindly helping the band to fulfil its bookings.*





RNLI lifeguards patrolling the three mile stretch of golden sands in Hayle have completed another busy season. Over the peak summer months of June, July and August, the lifeguards on the eight beaches; Godrevy, Gwithian, Peters Point, Upton Towans, Beach View, Mexico Towans, Hayle Towans and Porthkidney, helped beachgoers and water users involved in around 870 incidents.

A popular holiday destination, Gwithian was by far the busiest beach. Here the RNLI lifeguards dealt with over 390 incidents alone. The

beach's world-class waves attract both surfers and bodyboarders from far and wide and the majority of incidents were to water users in difficulty or other surf related incidents such as bangs to the head or cuts from the sharp fins.

Phil Drew, the RNLI's Area Lifeguard Manager for the Hayle area says; 'Its been a really busy season, the fantastic weather we enjoyed during June and July set us off on what was likely to be a record year for incidents had August brought similar weather.

As always though, despite the weather there are always the hardy holidaymakers who refuse to be deterred and the accessibility of wetsuits and surf equipment mean

# **CLIFFORDS**

## **Plumbing & Heating**

Boiler Changes - Full central heating - Servicing - Landlord Certificates  
Dripping taps to complete bathrooms - All plumbing work undertaken

Free quotations

Local, Reliable, Clean and friendly service

# **01736 755170**

07761 938183



**Fully Qualified, Gas safe Registered and Water Industry Approved**

[www.waterworkscornwall.co.uk](http://www.waterworkscornwall.co.uk)

that we can still have hundreds of people in the water on even the wettest of days, and the lifeguards remain busy.'

The lifeguards have also been involved in fund-raising for the charity, and joined 183 other runners for the inaugural RNLI Summer Sprint in August, a 5 and 10K run along the sand at low tide. Nine RNLI lifeguards completed the 5K route towing a 300kg quad bike. Runners from far and wide joined in the run; raising £3,000 for the charity's South West Lifeguard Appeal that overall aims to raise £500,000 towards the £5 million it costs to run the lifeguard service every year.

The RNLI lifeguard season came to an

end on the 26 September. However the more experienced water users are expected to continue to go in the water throughout the winter. The RNLI would recommend anyone going into the water for any activity off the beach, to take a buddy so one person can look out for the other. At the very least, it is always worth having a friend watching you from the beach as this person can raise the alarm if you get into difficulties. People should always consider their abilities before assessing the conditions and deciding whether they are suitable for them. If visiting an area where you don't know the beach well, ask the local surfers and water users for advice or contact the nearest RNLI lifeboat station.

**Des Button**  
**SPRINGFIELD**  
**33 Clifton Terrace**  
**Hayle TR27 4BP**  
**ELECTRICAL**  
**SERVICES &**  
**SUPPLIES**

**01736 753211**



**PART P  
REGISTERED**



**O'DELL  
SIGNS**  
**OF ALL TYPES**

Suppliers of  
Acrylic & Polycarbonate  
Sheets Cut to size  
and Boat Windows  
Perspex fabrication

Perspex lettering,  
Plastic, Engraving,  
Magnetic, Posters,  
Illuminated signs  
Signwriting,

**VINYL LETTERING**  
for Vehicles & Signs

**HAYLE 01736 753656**  
1, Turnpike Road, Connor Downs

# Angarrack Angle

A valuable asset to any village is its local community involvement and the village of Angarrack is certainly fulfilling and achieving this with the help of its beautifully refurbished Community Centre now known as the Syd Perry rooms aided by a dedicated band of volunteers. Situated adjacent to the village church this prestigious busy hive is now home to a wide number of interesting and fascinating morning, afternoon and evening activities which are being utilised by the locals both

from Angarrack and outside the village on a regular basis.

Current activities include Keep fit classes, IT Training, Coffee mornings, Art classes, Yoga, Gardening Club, Language lessons and there are plans for a beetle drive.

The smart recently refurbished facilities include the choice of either the 800 square foot centrally heated main hall which has a carpeted stage and seating for 60 or the small meeting room which are both conveniently alongside the kitchen area which is equipped with a refrigerator, kettle, microwave and crockery.

**If you would like to join in with our activities or take advantage of hiring these excellent facilities just call 01736 753914 / 079719 20996 or go online at;**

[www.angarrack.communitycentre.co.uk](http://www.angarrack.communitycentre.co.uk)

Say 'Hello' to:

This week I went along to talk to two of Angarrack's friendly community who both can be found looking after the village pub's fire whilst enjoying the odd glass or two of fine red wine. Of course I am referring to the charming and friendly Walter Edge and his lovely wife of 61 years Rose.

Walter and Rose have lived in the village part time and full time for nearly 50 years moving down from Ormskirk in Lancashire. Both had proudly done their duties for the country with Walter in the Navy and Rose in the Woman's



## **KERNOW ELECTRICAL & PLUMBING SUPPLIES LTD**

8 Hayle Terrace  
TR27 4BS

01736 758491

**MON-FRI 8 to 5**

**SAT 9 to 4**

**NOW ALSO AT:**

Pratt's Market

07549 331665

**MON-FRI 9 to 5**

**SAT 10 to 4**

For all your electrical & plumbing needs. Trade & public welcome. We sell everything from Hoover belts/bags to cable, lighting, lamps & tubes, domestic cooking elements, batteries & computer accessories – plus a large range of low-energy lamps. Vacuum repairs & garden machinery servicing.

Air Force. However, a great secret not known by too many of the villagers is that back in the 50's Walter was a teacher at the Liverpool Institute school where amongst many of his students two of his pupils may have just been starting to stretch, what was about to become, very famous vocal chords. In fact these two young pupils may have flumped their history exams but went on to be enormously successful in the music business and formed the world famous 'Beetles' group. Yes George Harrison and Paul McCartney just happened to be two of Walters students along with another young boy who went on to be the lead guitarist for Gerry and the Pacemakers. Walter told me that the music business was not for him and concentrated more on becoming a connoisseur of red wine whilst Rose became more than an average hand with the artists brushes using oils, water, and acrylic to practically cover all of their walls in paintings and even finding time to donate some of her paintings to charity.

Never to let the subject of age to get in their way, both are now in to their 80's, but it was only a couple of years back when I saw them pulling up outside their cottage after returning from touring around most of Europe where they constantly set up their tent in France, Italy and as far as Albania. Well here's a big 'cheers' to two lovely residents in our little quaint village.

*'Chelsyboy'*

# Diing Tay

Licensed Chinese Restaurant  
17 Penpol Terrace  
Hayle TR27 4BQ

Telephone  
**01736 753824**

We pride ourselves on catering for private parties and have an extensive menu that offers exciting and flavourful dishes.

Come in and dine or place an order with our takeaway service

For more information call for details.



## The REAL CAMERA SHOP

Film Camera Specialists



Foundry Gallery  
Pratts Market, Hayle

**01736 752787**

- 35 mm; Medium & Large Format.
- Kodak & Ilford Film;
- 135 & 120 Colour & B&W.
- New & Secondhand Darkroom & Developing Equipment.
- Antique, Vintage & Collectable Cameras.
- **10 % Student Discount**

### If you are submitting articles - please help us!

Please send your articles as EARLY AS POSSIBLE in the month; the deadline is the ABSOLUTE LATEST that we accept copy, not the date we want to be deluged with items! We do not have a typist in our team (Any volunteers?). If you have prepared an article on your computer, please EMAIL it to us if at all possible. If you do not have internet access, members can use the computers at Hayle library free of charge. If you have a HANDWRITTEN item, please get it to us a week before the deadline, ie. the 13th. We appreciate everyone's input into the Hayle Pump, and as we are all volunteers with work and family commitments your assistance in the above makes our lives a lot easier, Thankyou!

## BARTON print

Tel: 07799 411525  
Fax: 01736 757022

### Quick Reliable General Printing Service

JUST A SMALL SELECTION OF THE SERVICES WE OFFER!

- BUSINESS CARDS ● COMPLIMENT SLIPS
- NCR PADS / SETS ● LEAFLETS
- MENUS ● NEWSLETTERS
- ENVELOPES ● LARGE FORMAT PRINTS
- LETTERHEADS ● OVERPRINTING
- RAFFLE TICKETS
- B/W COLOUR COPYING

COMPETITIVELY PRICED

1 Turnpike Road, Connor Downs

Telephone 07799 411525 01736 754220

## PASSMORE EDWARDS INSTITUTE



## MEETING ROOMS FOR HIRE

Hayle's Village Hall has a variety of rooms for hire, suitable for 2 to 60+ people. Our on-going programme of renovation and restoration has made the building a pleasure to use and to visit.

For more information visit our web site at:

[www.hayle-pei.org.uk](http://www.hayle-pei.org.uk)  
or call 01736 756055

13-15 Hayle Terrace, Hayle, TR27 4BU  
Charity Number 268429

# DAVID GRATTON

## CONNOR MOTORS

*Quality Used Cars - Bought and Sold*



Many cars available from £2,100.00 upwards

CONNOR DOWNS, HAYLE TR27 5DW

Telephone: 01736 757375

Mobile: 07778 496109

### *Millpond Update – An Autumn Walk on the Wild Side*

**Welcome back, Millponders, it is so good to know you are still out there. My sincere thanks to Pat Quayle of Penwith Radio for reading out my scribblings on her show until the Pump returned.**

The first tints of gold are beginning to touch the trees. The corn has been harvested and the fields are being ploughed for next year's crop. The sweet scents of ripened fruits are tempered by the acrid smell of bonfires and Orion is striding out across the early morning sky.

The season is changing and I have to

admit I am an autumn person. There is something special about the sights, sounds and smells of the equinox that can stop you in your tracks and evoke all sorts of memories.

The strident honking of the geese and the gentler harmonies of swan "wing-music" passing over our houses on their way to Copperhouse Pool and Carnsew remind me of flocks of Brent Geese and Bewick Swans returning to Pagham Harbour in Sussex each autumn.

Autumn is arriving around the ponds too. Most of the drakes have nearly finished moulting and the flock had grown to over eighty. A small number are feral or wild mallards, the first to

return to the ponds again for a couple of years. A small group of 15 ducks are still on Copperhouse Pool and they may decide to stay there instead of returning home.

A few of our autumn visitors are starting to trickle in. Black-headed gulls began to appear in mid August. Some are old friends easily recognisable by their leg rings. Egrets are back too and now we can look forward to the next arrivals later in the season.

One notable absentee is Freya, our yearling female swan. She left the ponds in early August and is now with the swans on Copperhouse Pool. She seems very settled and hopefully will find a mate from among her new friends. She will be missed but she needed company of her own kind. I see her almost every day and can check on her well-being.

Water levels on the ponds continue to be a problem since the boys let the water out on carnival night. We have had comparatively low rainfall and water is extracted from the upper river so that the flow from the ponds does not bring the levels up sufficiently to keep the ponds in good health. We keep on trying to get conditions improved, but regrettably the agency in charge knows as much about conserving the environment as I know about astro-physics! It is so frustrating!

**Finally, to all fly-tippers of garden waste, your selfishness has been noted. Please stop dumping in the back of the wood before we need to fine you. You have a “green waste” collection and therefore have no need to dispose of your garden waste on this site. Thank you!**

*Georgina Schofield*  
*Volunteer Wildlife Warden.*



## gr8@school

### **Connecting Classrooms' UK Champions**

Three Hayle Community School pupils became UK Champions after entering a competition held by the British Council 'Connecting Classrooms' initiative. Hannah Goodyear, Athena Kara and Amy Hutchings, who are now Year 8, won for their film based on the theme of 'the different ways football unites us'. The competition was to promote 'Simunye', the Zulu word meaning 'we are one', and was introduced to them through the school IT department.

The three girls used their prior learning in Humanities on racism in sport and the concept of sportsmanship to help them create a 3 minute film on equality in sport. They interviewed other pupils and themselves to include in the production. All three commented that

they would definitely become involved in another activity like this as they were able to use their own initiative and creativity.



Pictured from left to right Hannah Goodyear, Athena Kara and Amy Hutchings.

The British Council stated: 'entries were sent in from across the British Isles and we were hugely impressed by the talent and creativity on show. The judging panel had an extremely difficult task in selecting the winners from the large number of original and inventive entries received'.

Hannah, Athena and Amy won 'Best Film/Multi-Media Presentation' category.

The school has been part of 'Connecting Classrooms' for the past three years, including teacher exchanges with Senegal and Ethiopia to promote lasting international links. It is looking forward to future participation in the scheme.

## BACK 2 SCHOOL

**It's back to school for Bodriggy** so that means a brand new start. Our new Head Boy is Jacob Richards and his speciality is ICT. Our Deputy Head Boys are Jack Webber and Danny Park who both love sport. We also have a new Head Girl, Sinead Carter who likes music and literacy. Our two new Deputy Head Girls are Beth Richards who loves P.E. and music and, last but not least, there's Myron Stringer who likes art.

Mrs. Blythe, our Choir Teacher, has chosen a new choir with over 70 members. We take part in events such as a Christmas Concert and

the Cornwall Music Festival which we have previously won.

Another special feature about Bodriggy is the amazing amount of Clubs which include Cricket, Football (girls and boys), Hockey, Art, ICT, Fencing, plus lots more!!

Another sport we participate in is swimming. We used to go for half an hour on each Monday for six weeks. We have now changed by going for an hour every day of the week so that every child can manage to swim 25 metres.

Thank you for reading.

*Sinead Carter and Beth Richards*

# Quiztime

## Where the Hayle is it?



### Can you identify where in Hayle this photo was taken?

To win **£5**, send your answers, along with your contact details, to [editor@haylepump.org.uk](mailto:editor@haylepump.org.uk) or alternatively one of the Hayle Pump drop-off points listed inside the front cover. The winner will be drawn at random from all correct entries received on 20th November 2010.

### Thought Provoking...

Goldfish have 3 second memories and, on average, it takes them 4 seconds to do a lap of a goldfish bowl...

Do they suffer from deja vu?

*The answers to the hidden words quiz from issue 92, can be found on the Index page. And the winner of the £20 prize voucher was J. Gilbert of Hayle, congratulations...*

## Anagram

### Quiz by Cleverclogs

- Old Roman** – A tract of open land  
**Sing chat** – Extremely severe or harsh  
**Inlay rum** – An object as a celestial body  
**Open late** – You may have thought you gnu  
**Title scarf** – Skilled in deception, cunning  
**Mid signet** – Clearing of condensation  
**Trade cup** – Has taken captive or seized  
**Hard nites** – Perhaps lost its shine  
**Token ban** – A quantity could make you rich  
**Sure sort** – It would be cold without these on  
**Trades fur** – One who certainly deceives  
**Lotion cue** – A good orator's lesson  
**Grey nail** – Animal between one & two  
**Ruined sun** – Don't drive if you're this  
**Knit reign** – Fiddling with something?

---

To win a prize voucher worth **£20** to be spent with any of our advertisers, send your answers along with your contact details to, [editor@haylepump.org.uk](mailto:editor@haylepump.org.uk) or alternatively one of the Hayle Pump drop-off points listed inside the front cover. The winner will be drawn at random from all correct entries received on 20th November 2010.



# HAYLE Pages

- 16 Alan Orchard & Sons - 01736 756687  
15 All Things Nice  
**39 Angove Sports - 01736 752238**  
44 Barton Print - 01736 754220  
31 Being Sovereign - 07814 68829  
**19 Bigglestons - 01736 752219**  
3 Biz and Bytes - 01736 755971  
34 Blewetts Toy Shop - 01736 753012  
6 Blushhh Lingerie - 01736 753440  
**37 Central Garage - 01736 755885**  
40 Cliffords Plumbing - 01736 755170  
**35 Colin's Market Garden**  
32 Cornwall Chiropractic Clinic 01736 759088  
33 Cornwall Council - 0300 1234 100  
45 David Gratton - 01736 757375  
9 David N'jie Decorator - 07944 156995  
41 Des Button Electrical - 01736 753211  
43 Diing Tay Chinese - 01736 753824  
29 Emma's Pilates - 01736 759088  
5 Fernleigh Guest House - 01736 752166  
**9 Flowertime - 01736 757006**  
23 Fresh - 01736 756222  
8 Graham Smith, Calm Time - 01736 740141  
14 Gwyn's Yoga Classes - 01736 740969  
19 Hayle Camera Club - 01736 753215  
**10 Hayle Day Care Centre - 01736 755000**  
18 Hayle Cycles - 01736 753825  
18 Hayle Home Furnishings - 07949 620194  
17 JC Electrical Services - 01736 754543  
39 John Andrews Joinery - 01736 741064  
12 Johnny's Cafe - 01736 755928  
4 Keast Opticians - 01736 753145  
42 Kernow Electrical - 01736 758491  
23 Lavenders Blue - 01736 754844  
36 Learn to Drive School - 01736 752596  
3 Lindsay's Dog Grooming - 01736 753864  
21 Lucy Kemp Jewellery - 01736 756379  
34 Michael Meadows Painter - 01736 758482  
29 Neil Shepherd - 01736 759944  
22 Neil Wade - 01736 756512  
15 Nick Farrar Windows - 01736 757818  
41 O'Dell Signs - 01736 753656  
7 One Day Raiki Workshop - 01736 758253  
2 Paradise Park - 01736 751020  
44 Passmore Edwards Institute - 01736 756055  
38 Philp's Famous Pasties - 01736 755661  
6 Plantech - 01736 754401  
14 Sewing Centre - 01872 225168  
34 Shelley's Emporium - 01736 756808  
15 Slimming World - 01736 711904  
**16 The Farm Shop**  
44 The Real Camera Shop - 01736 752787  
11 Ventonleague Book - 01736 753273  
28 Webb & Philp Electricians - 01736 753651  
27 Westwood Park - 01736 757428

*You can pick up your FREE copy of the Hayle Pump Newsletter at any of those advertisers listed above in **bold**. You can also get a copy from any of the other regular pick up points; **Hayle Library, Hayle Community Centre, Bodriggy Health Centre, Wyevale Garden Centre** and the following Post Offices at **Copperhouse, Martins and Connor Downs**. You can now also view all new and future copies of the Hayle Pump Newsletter online at our website [www.haylepump.org.uk](http://www.haylepump.org.uk)*

## Answers for the hidden word quiz from issue 92

- |            |           |             |            |
|------------|-----------|-------------|------------|
| 1. Beer    | 5. Petrol | 9. Blood    | 13. Honey  |
| 2. Oil     | 6. Milk   | 10. Syrup   | 14. Sap    |
| 3. Water   | 7. Wine   | 11. Cordial | 15. Saliva |
| 4. Mercury | 8. Cider  | 12. Sweat   |            |

## Regular Clubs

*To appear free of charge on this page, please send us details of your club and/or event, the time, dates and meeting place along with a contact and phone number.*

### **Hayle Old Cornwall Society -**

First Friday of each month from October to May, 7.30 pm. Downstairs at Passmore Edwards Institute.

☎ Julie Cook 01736 755989.

### **Hayle Library Reading Group -**

First Wednesday of each month, 2.00 pm. FREE ADMISSION. Contact Hayle Library.

### **Hayle Flower Club -**

Fourth Wednesday of each month, 7.30 pm. Hayle Day Care Centre, in the conservatory.

☎ 01736 757028.

### **Royal British Legion -**

Every Monday, Wednesday and Friday evening, plus Saturday afternoon. Top floor of Passmore Edwards Institute.

☎ 01736 758482.

### **W.I. Hayle East -**

First Tuesday of the month, 7.30 pm. Philip Smith Annexe, Hayle Day Care Centre.

☎ 01736 753503.

### **Praze Hayle Choir -**

Every Tuesday, 7.30 pm. Methodist Hall, Mount Pleasant.

☎ Don Metcalf 01736 757720.

### **Hayle Meanderers -**

Every Wednesday, 10.30 am. Commercial Road car park (by the Day Care Centre), FREE ADMISSION with contributions to car sharing.

☎ Joan Smith 01736 793631.

### **Hayle Camera Club -**

Third Tuesday of each month, 7.30 pm. Passmore Edwards Institute. Everyone welcome.

☎ 01736 753215 for details

## Events for October and November

### **Hayle Decorative Lights**

#### **Christmas Switch On -**

26 November, 7.00 pm. Commercial Road car park (by the Day Care Centre).

☎ Richard Horwell 01736 752597

### **The 2010 Cornwall Fim Festival -**

5-7 November. Phoenix Cinema, Falmouth. Tickets on Sale 20 October. For full programme visit [www.cornwallfilmfestival.com](http://www.cornwallfilmfestival.com)