

HAYLE PUMP NEWSLETTER

MERRY CHRISTMAS & HAPPY NEW YEAR



TO ALL OUR READERS!



Inside this issue: (left)
Hayle WI get festive,
Christmas Lights brighten
the town & Friends of the
Towans ... and MORE!



(right) Read inside about Hayle in
Blooms success



Santa is visiting Hayle &
Connor Downs –see back
page for his routes.



Free! thanks to our volunteers & advertisers.

Hayle Pump Newsletter

Passmore Edwards Institute, 13-15 Hayle Terrace TR27 4BU

The Pump is produced by volunteers as a community newsletter.

NB All articles accepted are not necessarily the view of the editorial team.

View online at www.haylepump.org.uk

Editorial team contact

editor@haylepump.org.uk

Team Members

Stephen Murley (Editor)

Tina Morgan (Subscriptions)

John Cole (Distribution)

Jeff Turk (Advertising & Treasurer)

Subscriptions

Tina Morgan

Phone: 01736 756567

For 6 issues by post, please send a cheque or postal order for £4.40 made out to:

C.M. Morgan and send to
Tina Morgan, 29 Bodriggy Street, Hayle, TR27 4NB

Please give your **telephone** number as well as the delivery name.

Advertising / Treasurer

Jeff Turk

Phone: 01736 752319

Send your adverts to:

jeffandsarah@outlook.com

or use the drop off points.

Advertising Rates:

NEXT DEADLINE is

13th January 2024

1/8	63 x 47.5	£10
1/4	63 x 95	£15
1/2	NA	

The Hayle Pump would like to remind readers that items, or articles and Public Notices are accepted as points of view and are not necessarily the opinion of the Newsletter Team. Correspondents are reminded that all material submitted must be signed with their name and address, and if possible, telephone number for validation. This will not be printed if you don't wish it to be. We reserve the right to refuse or edit items sent to us.



Council Corner

Councillor Vacancy

Hayle Town Council has a vacancy for one Town Councillor on the East Ward. If you fulfil the eligibility criteria and are interested in becoming involved in local decision making and helping to shape the future of Hayle please consider applying.

Applicants are asked to complete and submit an application form, detailing why you wish to be considered as a councillor and any qualities or experience that you have that you think would benefit the Town Council. The co-option policy (explaining the process) and application form are available on our website: <https://www.hayletowncouncil.net/elections/> together with lots of useful information about what is involved in being a councillor.

Please look out for further notices on our website and social media in the New Year, advertising the closing date for applications. All applicants will be invited to a special co-option meeting to speak briefly and to answer any questions from the Council.

Application forms must be submitted to the Town Clerk at:

Hayle Town Council, Hayle Community Centre, 58 Queensway, Hayle, TR27 4NX or via email to info@hayletowncouncil.net.

If you have any questions about the

process, please do not hesitate to contact the council office on 01736 755005.

Hayle Community Action Group

The Hayle Masterplan has now been completed. The masterplan is a great starting point for discussions around the identified project areas. Its significance extends to aiding funding applications by showcasing the community's intentions. Additional work in the form of designs, feasibility studies and so on are still required to bolster grant applications, and this will be the focus of our next efforts.

During our last meeting on Tuesday, 7th November, the group delved into plans for the revamp of Hayle Recreation Ground. We explored various ideas and the next steps is to consult with the young people and



**HAYLE DAY
CARE CENTRE
TRUST**

**ENTERTAINMENT,
COMPANY, A WARM
WELCOME
and a delicious,
traditional two course
meal, all for £22.**

Booking required tel;

01736 755000

children in our town through Hayle Academy, Bodriggy Academy, Penpol School, and Hayle Youth Project. This data will form the basis of a detailed design plan for the park. Our discussions have centred on making the space more accessible and inclusive to different age groups and sections of the community, alongside strategies to counter anti-social behaviour and consider ongoing maintenance.

Moving forward, Hayle Community Action Group will be meeting at 7pm at Hayle Day Care Centre on the following dates:

- Tuesday, 5th December, to discuss KGVMW.
- Tuesday, 16th January, to focus on travel and movement.

We extend a warm invitation to everyone interested in attending these sessions. Your insights and ideas are highly valued, especially if you hold a particular interest in one or both of these areas. To stay updated, simply send an email to julie.baldwin@hayletowncouncil.net and we'll add you to the HCAG mailing list.

Free Cornwall Car Parks – 3rd December

It will be free to park in all Cornwall Council pay and display and pay on exit car parks on Small Business Saturday, which this year falls on Saturday, December 2.

Christmas

The town council services will close on Friday 22 December 2023 and will

Julia Woodhams

MAR: MIGHT: MBRC

COMPLEMENTARY THERAPY PRACTITIONER

Aromatherapy, Reflexology,
Reiki Healing, Indian Head
Massage, Swedish Massage
and Aromatherapy
Facials with organic
oils.

For appointment or
enquiries

**Ph: 07960 181497
01736 603397**

Email: roo61@hotmail.co.uk

Gift Vouchers available.



touching hearts, changing lives

TUESDAYS

New Venue as from 5/9/23
HAYLE – Hayle Day Care Centre
Commercial Rd, TR27 4DE
3.30pm, 5.30pm & 7pm
Tel: Carole 07742 972714

WEDNESDAYS

HAYLE - Hayle Rugby Club
Marsh Lane, TR27 4PS
9.30am & 11am
Tel: Charlotte 07498 994951

SATURDAYS

LEEDSTOWN - Village Hall
Carsize Lane, TR27 6FJ
7.30am, 9am & 10.30am
Tel: Susie 07813 523072

resume on 4 January 2024. Any issues relating to the public conveniences or open spaces should be reported to the town council in the normal way but during Bank Holidays or out of normal office hours please contact CORMAC via 0300 1234 100 or 0300 1234 222.

Please check our website and the social media pages for any updates and opening times for the Library.

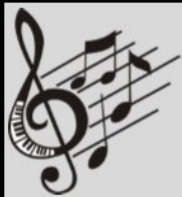
Hayle Town Council
Hayle Community Centre
58 Queensway
Hayle
TR27 4NX
01736 755005
info@hayletowncouncil.net
www.hayletowncouncil.net
Office hours 9.30am – 12.30 pm.



Millpond Update

It's amazing how quickly the year has slipped by. It has reached that time again when our Christmas lights are adorning the corner behind the bench. The Lights will also shine along the top of the wall making the corner visible from the top of the hill leading to Penpol School.

Our turtles are settling down for their winter sleep among the water lilies. The outfall has been cleaned to allow the water to drain out properly. The autumn colour has been beautiful all around the Ponds and the drakes have all returned home and now we have seventy-four



Move that
Body to
Music

Classes for 60s Plus

Classes held in a socially
distanced safe environment

**Thursdays at Hayle
Rugby Club at 10.30 am**

£5.00 a session

Phone Sylvia on
01736 757560
for more info



**Kim's
Yoga and Pilates at
Lelant Village Hall**

**Every Monday
Yoga 8am
Pilates 9.30am &
11am**

**Carnhell Green Studio
Wednesday and Friday – Yoga
8am**

Sunday 10am
Sunday beginners slow flow yoga.
10am at Carnhell Green Studio £9
a class.

On-line and 1-1
classes also
available.

**Contact Kim
07751552313**



coming out for the food on the bank of the Lower Pond. We still get the occasional visit from the ginger cat. The two ducklings have grown well and they come up on the bank with their parents. The ducks have regular visits from their friends and they are a contented flock.

The trees are losing their leaves around the ponds and along the Rope Walk making an area full of colour.

So come along and enjoy the autumn walks.

Georgina Schofield

Volunteer Wildlife Warden

Bodriggy Health Centre

The following information is a shortened version of the centre's latest newsletter.

Vaccines

We now have a limited amount of flu and covid vaccines left, if you wish to have a vaccine, please contact reception to make an appointment, or if you are passing pop in and we may be able to do your vaccine for you there and then.

Bike Racks

We have new bike racks at front of building by the pharmacy.



Mr. B's
Famously Fresh Ice Cream

The only place you can get a delicious



POP
Waffles



OPEN DAILY
Fore Street, Copperhouse
Penpol Terrace, Foundry

 [mrbsicecream](#)
 [mr_bs_ice_cream](#)

Tel: 01736 757925

www.mrbsicecream.co.uk



LEWY'S
FISH & CHIPS

**The Oldest
Chippy in
Hayle!**

Opening hours

Sunday — Monday:	Closed
Tuesday:	4.30—8
Wednesday:	12-2 / 4.30—8
Thursday:	12-2 / 4.30—8
Friday:	12-2 / 4.30—8
Saturday:	12-2 / 4.30—8

We have a 5* Hygiene rating

See us on  @Lewy's Fish & Chips

01736 759381

48 Penpol Terr Hayle TR27 4BQ

Patient Participation Group

We have set up a patient representation group so that you can have your say. We will ask the members of this representative group some questions from time to time, such as what you think about our opening times or the quality of the care or service you received. We will contact you via email and keep our surveys succinct so it shouldn't take too much of your time. You will also be invited to meetings which are usually held every 3 months. Please ask at reception if you wish to join or use the online form on our practice website.

Cuppa Companions

Every Tuesday 10.30am till 12noon at the White Hart in Hayle, come a long for a warm drink, meet new people and take part in a quiz, all welcome. Run by Henri, Social prescriber link worker. For further details please email

Henri.Sloan@nhs.net

Diabetes Group dates

Tuesday 19th December

Venue: Annex next to Hayle Day Centre 14:00-15:30

Run by Henri Sloan, Social prescriber link worker and Spencer from Diabetes UK

Bodriggy Blanket

One of our GP's came up with the lovely idea of knitting squares to make up a blanket to give to someone who is homeless and here it is... each square 20.5cm by 20.5cm and knitted by staff and patients of Bodriggy. This project

has been such a success that we will continue it, please get involved and hand in the squares to reception to pass on to Henri for stitching and distributing.

Bowel Cancer Screening

Bowel cancer screening can save lives. If bowel cancer is found early, it is easier to treat. Screening may also pick up noncancerous growths (polyps), which could become cancerous in the future. Bowel cancer is treatable and curable, especially if it's diagnosed early. Nearly everyone diagnosed at the earliest stage will survive bowel cancer. See <https://www.cancerresearchuk.org/about-cancer/bowel-cancer/getting-diagnosed/screening>

THE FARM SHOP

31 Penpol Terrace, Hayle
TR27 4BQ

**Open - Monday-Saturday
7am– 3pm**

For all your local produce
Fruit, vegetables, plants, flowers,
free range eggs and
Cornish potatoes.

NOW IN
Christmas wreaths
Homemade pickled onions
Christmas flowers

**We wish all our customers a
Merry Xmas and Happy New Year**

Breast Screening

The NHS Breast Screening Programme invites all women aged between 50 and 70 for screening every 3 years. You need to be registered with a GP to receive the invitation. If you are younger than 50, your risk of breast cancer is generally very low. Regardless of age, if a breast lump is felt by a woman, then please seek early and prompt advice from the GP and make an appointment to be assessed.

Contact Bodriggy:

- 01736 753136
- enquiries.bodriggy@nhs.net
- www.bodriggysurgery.co.uk

Reception Desk Opening Times

- Monday-Friday: 08:00 - 18:00
- Weekend: Closed

Phone lines open 08:30 until 18:00

If you need advice when the practice is closed, you can call NHS 111 (dial 111) to speak to a health professional. Your needs will be assessed, and advice offered. Please do not ask to see a doctor out of hours unless you genuinely cannot wait until the surgery re-opens.

Who delivers presents to
baby sharks at Christmas?

Santa Jaws!

Sweet William's Florist

.....for the personal
touch.

07928 100 690

01736 740 644

www.sweetwilliams.com

ALI'S SEWING REPAIRS AND ALTERATIONS

Give your loved items a new
lease of life ~ no job too small

- Zips and buttons replaced
- Hems adjusted
- Curtains altered to fit
- Split seams and tears repaired
- Speedy turnaround and reasonable prices



079669 66332

aligalloway@yahoo.co.uk



Ali's Sewing Repairs and
Alterations



In early October Hayle In Bloom (H.I.B.) attended yet another South West In Bloom (S.W.I.B.) awards ceremony, this year, held in Truro Cathedral. This location certainly encouraged a good turnout by our members and Hayle was rewarded again this year being presented with a Gold Award in the Champion of Champions category.

The majority of our individual entries were rated as 'Outstanding' (Level 5) within the 'It's Your Neighbourhood' judgements and is something for all Hayle residents to take pride in. These excellent judgements are a fitting reward for all volunteers

working communally, all residents with gardens and all businesses with troughs, tubs and baskets all adding colour and beauty to our town.

The It's Your Neighbourhood (IYN) awards were presented by Lady Emma Fellowes, patron of S.W.I.B. and projects were recognised as Outstanding (level 5), Thriving (level 4), or Advancing (level 3).

Lady Emma was accompanied on the Presentation Platform by Councillor Carol Swain, Mayor of Truro.

From Hayle, the entries judged as Outstanding were as follows:

- Lethlean Community Allotments
- Pentowan Allotments
- W.I. Bed on Penpol



Webb & Philp Ltd
electrical contractors



All aspects of Electrical work undertaken

Free Estimates. No Job Too Small.

Prompt. Reliable. Fully Qualified. Est 1972

- ✓ Re-Wires
- ✓ Security
- ✓ Showers
- ✓ New Build
- ✓ Testing
- ✓ Maintenance
- ✓ PAT Testing
- ✓ Extra Sockets & Lights

www.webbandphilp.co.uk

Tel/fax 01736 753651 Mobile: 07419 376882

Email: electricians@webbandphilpltd.co.uk

- Bodriggy Academy Bug Garden
- Queen's Platinum Jubilee Garden
- King George V Memorial Walk
- St. Piran's School beds and murals
- Isis Gardens
- Friends of the Towans
- Save Our Sands

Special Gold Awards were made to the following entries:

- Paradise Park (Best Business in Leisure and Tourism)
- Breezers' Bed on Penpol and Activities at Passmore Edwards Institute

Entries judged as Thriving (Level 4) were as follows:

- Jubilee Bridge

- Passmore Edwards Institute (Floral Displays)
- Copperhouse Planters
- World Heritage Engine House Bed (Penpol)

Well done everyone involved with all these projects.

At this point in time it might be appropriate to congratulate the town of Glastonbury who, this year, were awarded the Preece Cup and thus removed the silverware from Hayle! I have to say that I thought the town was full of colour and imaginative displays in September when we visited, so that the award was very well-deserved — a splendid entry! Congratulations also go to Truro in Bloom who hosted the Awards Ceremony in the cathedral.

As can be seen this year, Hayle in



PLANTECH
GARDEN SERVICES

EST 2006

Lawns & Hedges Cut
Tree & Shrub
Pruning ,
Lawn Care
Treatment Services
Gardens Cleared

Free no obligation quotes

Mob: 07979 546434
Tel: 01736 754401

ALEXANDER McDONALD

Gutter clearing and fascia board cleaning. Painting, pressure washing, gardening services. Also Fencing and Fence repairs and all those little jobs you keep putting off. Free estimates.

Big enough to cope, but small enough to care!

Mob 07880 777 591

Home 01736 753102



Bloom continues a remarkable run of success over the last 18 Years and, hopefully, residents of the town and visitors alike have enjoyed the results of the work carried out by our volunteers and friends over this period.

Times change, however, particularly with regard to personnel in voluntary organisations and we are no different to this trend. We are always looking for volunteers to join us but during this year some significant changes have also occurred within our group.

Earlier this year Co-Chair, Richard Barber and Secretary Gill Barber had to resign their posts for personal reasons and we all acknowledged the commitment and effort they had made over recent years. Fortunately, Co-Chair, Nigel Powell and his wife,

Josie, agreed to temporarily fill the positions of Chair and Secretary until the next AGM in February 2024. This time rapidly approaches. They have both done remarkably good work in this interim period. However, with regret, they now choose to stand down for personal reasons, thus giving others the opportunity to take Hayle in Bloom to even more success in the future. Nigel and Josie will continue to look after the Passmore Edwards Memorial Garden and Richard and Gill will continue to look after the Queen's Jubilee Garden.

We are unable to find any successors within the group to take us through the next 2-3 years because all are engaged with volunteer work already and/or have their own personal reasons, health or

Café Riviere

Across Hayle's Jubilee Bridge

**Serving a variety of hot
food, late breakfasts,
drinks, ice-cream, cream
teas and snacks.**

- *Indoor and outdoor seating.*
- *Take-away is available.*
- *Open all year.*
- *Next to the public open-air swim pool, sub-tropical gardens, promenade and nature reserve.*

PAUL SHERRIS

**Hayle's only
local family owned
FUNERAL
DIRECTOR
Private Chapel of Rest
Pre-Payment Plans
available
West Terrace, Hayle.
TR27 4JS.
01736 753969
Day or night**

otherwise, why they are unable to fill the vacant positions. We are, therefore, looking for two new volunteers to join our successful group and take on the roles of Chairperson and Secretary preferably at/before the A.G.M. on 26th Feb.2024. No gardening experience is necessarily required, and you don't need 'to get your hands dirty' but we have an excellent Treasurer and a structure in place, with help on hand when needed. We meet on the last Monday of each month for about 60-90 minutes, depending on 'the business at hand', on 10 months of the year.

For those interested in either role then please do contact any of the following for details and/or a chat:

- Josie POWELL 01736 752169
- Paul CLARK 07584 060100
- Barry CONNER. 07717 205804

Alternatively, you may prefer to speak to Nigel POWELL, the voice of experience, when out and about in Hayle. For those interested, please make contact as soon as possible, but before 23 Feb. 2024 at the very latest!

The Bloom continues with their regular monthly meetings on the last Monday of the month (not including Bank Holidays), in the Passmore Edwards Institute at 7.00 pm. The next meeting will be on Monday 27th November. There will be no meeting in December so that the first meeting of 2024 will be on Monday 29th January.

Fiona's Curtains and Blinds

I make affordable, made to measure Curtains, Roman Blinds and Soft Furnishings for your home.

I can also alter your existing curtains or repurpose fabric that you already have, to make blinds or cushion covers.

No job is too small! Please ring or email to discuss

07425212093

fiollerton@gmail.com

WEST CORNWALL MOBILE FOOT CLINIC

For the professional treatment of:

Corns & Callus Diabetics

Verrucas Athletes Foot

Thickened Nails

Fungal Infections

Ingrowing Toe

Nails

Cut-trim Nails

All in the

comfort of your own home

Peter Williams

S.A.C.Dip FHPT/FHPP

07901 803493

Evening & weekend calls available.

pwpetewilliams@googlemail.com



Finally, notice is hereby given of our Annual General Meeting on Monday 26th February at 7.00pm in Passmore Edwards Institute. Refreshments will be available. Everyone is very welcome!

(Photo on front cover is of H.I.B. Golden award ceremony. Showing, Left to right, Nigel Powell (chairman) Carol Swain Mayor of Truro, Paul Clark H.I.B, Lady Emma Fellows (patron S.W.I.B)



You have no doubt noticed the many birds on Copperhouse Pool. Apart from the gulls, there are, literally, hundreds of teal and wigeon, small dabbling ducks that regularly visit here in the Winter. A count of 950 wigeon was made early in November.

You may wonder how big flocks of birds are counted. Not individually! A small 'block' of the bird flock is selected and counted. Then, the size, shape, and number of birds within the 'block' is transposed over the rest, block by block. In this way a good estimate – or 'guesstimate' –

What happened to the man who stole an Advent Calendar?

He got 25 days!

Transformations Cornwall

*Give your home a luxurious finish.
Create the style you desire.
Bespoke curtains, blinds and soft furnishings.*

*Handmade to a high standard.
Professional friendly service.*

*Elizabeth Gregg
17 Penpol Road Hayle
TR27 4AD*

*01736 752434
elizabethmgregg@gmail.com
Www.facebook.com/
transformationsCornwall*

Find us on Penpol Terrace, Hayle, TR274BQ



THE BIG PINK TREE

Your local Christmas Gift Store & Florist.

www.thebigpinktree.co.uk

www.wesendflowers.co.uk

01736 757006

Beautiful Flowers, Greeting Cards & Gifts



Find us on Penpol Terrace, Hayle, TR274BQ

provides the result.

The teal spend summer in the Baltic and Scandinavia, and the wigeon in Iceland, Scandinavia, and Russia. Long Haul Flights for small birds, and nice to know that they can feast in our estuaries when they arrive.

Another welcome avian visitor, on Ryans Field (alongside the Causeway) is a juvenile spoonbill. He has been around for a couple of weeks, and was previously seen at Marazion Marsh for several weeks. The bird was ringed on 10th June as a chick in the Midtjylland region of Denmark. That's a journey of some 1120km from its birthplace!

A delight for me has been seeing a kingfisher at Black bridge, twice in a couple of weeks. There is something magical about that flash of blue as

they streak away. The first time I saw the bird, as I peered over the bridge wall, he was perched on a concrete ledge below. We were both taken by surprise. I look over the bridge every time I pass, hoping to spot a kingfisher, usually with negative results. But there he was – and he too was surprised, and sat for a moment or two looking up at me before dashing away across the small pool. It was one more beautiful moment to add to my list of beautiful moments. Nature can lift one's spirits like nothing else! Keep your eyes skinned for your beautiful moment.

Until next time.

Tina Morgan

PROPERTY MAINTENANCE

**Painting
Gardening**

Fencing/Sheds.

Experienced and reliable

Competitive rates

Contact

Simon Wells

07709 926 595

01736 754408

simonwells1466@gmail.com



Railholiday.co.uk

**Award-winning holiday carriage
in a large, fully enclosed garden
beside Hayle station. Sustainable,
dog-friendly, great base for walking,
cycling, relaxing and bird-watching.**

**Perfect for all the family. Outdoor
brazier, table-tennis and playhouse.**

**£50 off if you live in Cornwall or
Devon, or come by train!**

01503 230783 - 07776 261192



Hayle Library

Season's Greetings from the team at Hayle library.

For your information we will be closing at 5pm on Friday 22nd until Friday 29th December where we will be open just for the morning (9.30-12.30) and then open and back to normal on Wednesday 3rd January.

Rhyme time (a free baby and toddler session) will still run during the holidays, apart from Wednesday 27th December because we will be closed on that day.

On Wednesday the 13th December we are going to pop next door to the Day Centre to share some songs

with our Hayle elders. We would love for you and your little ones to come along too. We will meet in the library at 11am wearing our Christmas jumpers so it would be lovely if you could be Christmassy too!

Storytime/Lego club which is on a Saturday at 11am, will not run on the 23rd or the 30th December, as we will be closed.

We are excited to announce that we have won community hub funding that has allowed us to run some free courses for adults which are:

- 'Watch my needs' Makaton workshop which starts on Friday 12th January and runs for five weeks.
- 'Pilates Pelvic Floor and Breathing Session', on Saturday 13th January (time to be confirmed).



PHILPS
FAMOUS PASTIES OF CORNWALL

Order our Famous Cornish Pasties online to be delivered to your door at www.philpspasties.co.uk

Hayle East Quay 01736 755661
Hayle Foundry Hill 01736 753302
Marazion 01736 710332
Praze-an-Beeble 01209 831360



CLIFFORDS
Plumbing & Bathrooms

Merry
Christmas
And a



Happy New Year

To all our customers

Thankyou for your Business



01736 752955 – 07761938183

cliffords4@btinternet.com

 Cliffords plumbing and bathrooms



- 'Healthy Tasty Cooking on a Budget' - ingredients supplied, Saturday 13th January 1-3.30pm.

'Healthy Tasty Food on a Budget' is a free, fun and practical cooking workshop – make delicious food while keeping costs down. Prepare a range of tasty dishes, learn different ways of using ingredients (old and new). Discover value for money tips at the same time as picking up new ideas for meals to serve. Tiffany is a qualified chef and also has a degree in Hospitality Management. She has many years of catering and teaching experience as well as a background in Community Work. She currently works as a food tutor and Community Food Worker in Cornwall. This session all ingredients will be supplied,

There are also more courses available, please either keep an eye on our Facebook page or pop into the library to find out more.

If you are interested in attending, you can contact us on 0300 1234 111 (ask to be put through to Hayle library) so we can book you a place.

The Citizens advice free drop in will run as usual for 2 hours at 10am every fortnight, the dates in December are the 6th and 20th. and then every 2 weeks after that.

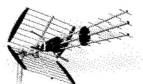
The Homegroup housing advice support drop-in (for people with physical health need and/or disability) will have a break and will not be running on the 20th December. They run on the same weeks as CAB but in the afternoon, 2-4pm. They can help with housing

ALL AERIALS

TV Aerial & Satellite TV Specialists.

digital 

Registered Digital
Installer



25 Years Experience

For all aspects of Tv Aerials,
Satellite Systems Fixed &
Motorised, Installations &
Repairs

Free Friendly Expert Advice By
Local Engineer.

Tel : 01736 759225

Mobile : 07979503907

Email. jonathan@allaerials.co.uk



HAYLE DAY CARE CENTRE Commercial Road, Hayle

An affordable day care facility for the
elderly of Hayle, St Ives and district

Transport ▪ Freshly cooked meals

Also includes bathing and hairdressing
Therapy and lively social interaction

Always a friendly welcome

Call 01736 755000

applications, form filling, health referrals and much more.

We have 5 computers for people to use for free; printing is available at a very competitive price.

We wish you a Merry Christmas and a Happy New Year and look forward to seeing you soon. *Abi Coates, Library Information assistant, Hayle Town Council*

DIRECT TRANSPORT Removals & Storage

**LOCAL & NATIONWIDE
Full & Part Packing Service**

**Call for a free
competitive quote**

**Tel: 01736 603018
or 07476 223221**

7 days personal service



Well, hello from me! I'm Sara, Friends of the Towans Volunteer Coordinator.

The last month and a half has been a busy time for Friends of the Towans.

We re-started our practical conservation sessions at the beginning of October and these are now running every week on a Thursday, 10am to 2pm. So far we've been working at Gwithian

Towans, cutting a large patch of scrub, mainly gorse and blackthorn, to stop it from spreading into the surrounding dune grassland. As part of this work we've cut an old path that had

Enjoy true freedom of movement...

Rediscover your vitality



Our practitioners are all highly qualified, covering chiropractic, sports massage, physiotherapy, aromatherapy massage, chiropody/podiatry and reflexology.



www.cornwallclinic.co.uk | Foundry Square, Hayle | Call today 01736 759088

become blocked by brambles and blackthorn. We've also done some work at Gwithian Green - clearing a section of the stream that had got overgrown and cutting some elm and brambles to reveal part of the wall of the Gwithian pound - a historical feature that was used to contain stray grazing animals until their owners could come and retrieve them. In the next month we'll also be clearing some gorse at St Gothian Sands and cutting scrub and planting marram grass at Mexico Towans.

The conservation ponies have now started their return to the Towans. At the moment there's a group of 5 grazing at Gwithian Green and shortly there will be some more grazing a couple of areas on Gwithian Towans. The ponies do a great job; helping to mow the grassy areas; trampling down some of the taller plants; munching on the scrubby bushes, keeping them in check and also leaving their dung which provides food for a range of minibeasts. The grazier (owner) uses electric fencing to control where they graze so, if you're out on the Towans, please do watch out for these areas and keep clear of the fence. Where

the fence crosses any major paths there are squeeze stiles so you can still use the path without having to cross the fence. The ponies are semi-wild so please give them plenty of space and leave them to get on with their important work! Especially, please do not try to feed them as this can encourage them to approach people which some people can find a little challenging. The ponies are regularly checked by the grazier and volunteers - if you'd like to join our team of pony checkers, please do get in touch.

Our last practical conservation session of the year will be Thursday 14th December, where we'll be celebrating with festive snacks and baked potatoes cooked on the fire. Sessions will start again on Thursday 4th January and we'll have an extra weekend session on Sunday 21st January so if you can't make Thursdays we hope you can join us then. We're a friendly group and you don't need any experience to join - maybe your new year's resolution could be to come out on the Towans and join us - get some fresh air, exercise and meet some new people!

THE Cornish Arms

86 Commercial Road, TR27 4DJ



Open every day serving
lunches and evening meals.

Fabulous beer garden!
FAMILY friendly- friendly
dogs welcome. Famous for
our ales and Sunday roasts!

Ph 01736 753237



The Cornish Arms Hayle
@thecornisharmshayle

And if you're looking for a special Christmas present there's just a few postcard-sized original artworks made by members of the Friends of the Towans Art Club available. Funds raised will support our work on the Towans - see the Friends of the Towans Facebook page for more details.

If you'd like to find out how you can get involved with Friends of the Towans, please email me at friendsofthetowans@gmail.com or visit our Facebook page for details of our events.

What did the stamp say to the Christmas card?

Stick with me and we'll go places!

Hayle Twinning Association

We all enjoyed the visit from members of the Pordic twinning association last May, and we are now planning our trip to Brittany in May 2024.

We are still happy to welcome new members, who would be eligible to join the visit. It isn't necessary to speak any French. The only requirement is a commitment to host in return when the Bretons visit next in May 2025.

The AGM is being held on 14 February 2024 at 2pm. Venue to be decided. For further information please contact Maureen Mason (secretary) 07792 586948 or Mike Stuckey (chair) 01736 697771.

Saints

funeral services

**INDEPENDENT FAMILY
FUNERAL DIRECTORS**



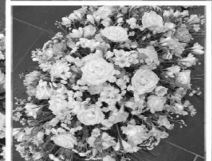
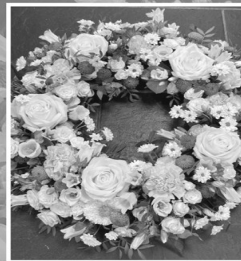
- PRIVATE CHAPEL FOR SERVICES
- RELIGIOUS/NON RELIGIOUS WELCOME
- PRIVATE CHAPELS OF REST
- PRE PAID FUNERAL PLANS

TEL: 01736 447070 (24HRS)
www.saintsfunerals.co.uk

KING GEORGE V
MEMORIAL WALK,
PHILLACK,
HAYLE .



BARNOON
CHAPEL,
CLODGY VIEW,
ST IVES.



**Funeral Flowers
Cornwall**

By Flortime @ The Big Pink Tree

Flowers speak,

where words fail....

*Saying goodbye is never
easy, allow us to express
your sentiments with a
beautiful floral tribute.*

www.wesendflowers.co.uk

01736 757006

17 Penpol Terrace



So Here It Is Merry Christmas! We had a fantastic switch on event at The Standard this year thanks to Damian and Miranda Knight.

The decision to move it from the usual spot at the library car park this year wasn't taken lightly but we're delighted it worked out so well and everyone had a wonderful time. We want to thank you for turning out to support the event. Without your generous donations to Hayle Christmas Lights we couldn't keep going. Every pound counts and we're already looking at funding for next year's plans. If you'd like to donate, you can donate directly to our account:

Hayle Christmas Lights, 30-96-26 ,
53629868

We want to thank Hayle Town Council for a generous grant and Haven Holidays, Mr Bs, Lula's, Philps and others for their contributions as well as everyone who donated their spare change to a donation box. The money is put to very good use paying electricity bills, repairing frames and replacing lights, paying for tools, supplies and services and more. So please help out if you can.

A huge thank you to our volunteers who have been toiling in all weathers up and down ladders and on roofs in their spare time for months. They are another very important part of Hayle Christmas Lights. Without them there wouldn't be the famous display of lights we all love so much at Christmas so a big thanks to Keith, Colin, Chris, Barry, Daniel and Richard.

**DAVE
THOMSON
DECORATING
INTERIOR &
EXTERIOR.**

FREE QUOTATIONS

**TEL 07518 136 730
01736 754647**

**Dave.thomson2013
@hotmail.co.com**

HEARING
SERVICES CORNWALL
LIFE SOUNDS GREAT



**Local Independent Hearing Aid
Audiologist Richard Bunce
based in Hayle can help you
hear again.**

**Service and repairs to most
makes .**

**FREE HOME VISIT HEARING TESTS
covering Cornwall .**

**Book your appointment on
0787 218 3742
ears11@sky.com**

If anyone wants to join in and help out you can contact us via email or on our Facebook page. Email: haylechrismaslights@gmail.com Facebook Hayle Christmas Lights group: <https://www.facebook.com/groups/haylechrismaslights/> A very Merry Christmas and a Happy New Year from everyone at Hayle Christmas Lights!



BLEWETTS
TOY SHOP
19 Penpol Terrace Hayle
TR27 4BQ
01736 753012



Hayle Friends Group Children's Hospice would like to thank all those who supported us through the summer when we held a series of Cream Teas. We raised a total of £805 and sold many of our Christmas cards. Hayle Friends CHSW would also like to thank all those who supported the Quiz Night held at COAST Restaurant Beachside Holiday Park. Special 'Thanks' to Beki and all the staff who made the evening a very happy place to be. Again a 'Thank you' to those who donated beautiful gifts for the raffle. We raised £174.20. We held a Table Top Sale on 3rd Of November at the Rugby Club Hayle. We would like to

PASSMORE EDWARDS
INSTITUTE



**MEETING ROOMS
FOR HIRE**

Hayle's Village Hall
has rooms for
meetings & activities
for 2 to 60+ people

For more information:
WWW.HAYLE-PEI.ORG.UK
bookings@hayle-pei.org.uk
 Or call: 07895-601978

13-15 Hayle Terrace
 Hayle, TR27 4BU
 Charity Number 268429

**PHYSIOTHERAPY
MASSAGE**

SHIATSU

CHRISTIAN THELERMONT
 Fellow of the Shiatsu Society UK (FWSS)
27 years practising

Sports injuries
 Increases circulation
 Improves posture
 Client stays fully clothed

synergyshiatsu.co.uk
07949 938096

thank all those who came and supported us with stalls and the many people who supported by purchasing goods from those many stalls. We also would like to thank Hayle Rugby Club for the use of the venue. The event raised £433 with the knowledge of more donations to come. Hayle Friends would like to thank all those who came to the Coffee Morning at Goldsithney Methodist Church. Your very kind invitation to Hayle Friends CHSW to join you and have a stall to sell Christmas Cards raised £104. The continuing support from the people of Goldsithney is very much appreciated.

This will help Little Harbour Cornwall's Children's Hospice to continue giving the much-needed care and support to families with a very sick child. It will enable expert care to help the parents who often have a 24-hour care for the child and the siblings to be with other children who understand what it is to have a very sick child in the family. The sick child themselves have a stay of fun and laughter encouraged to do as much as they are able making Little Harbour a very happy place to be.



The Bells of Phillack

Last year, the ringers at Phillack Tower decided that we would leave the Cross on the Tower shining out all year, not just at Christmas and Easter. Apart from the long summer days of June and July, so it was. But sadly, after a brief power cut recently, the Cross has been off, the electrics damaged by the power cut. It is a big job to bring the Cross down from the Tower for repair, both in manpower and money, so we have sadly decided to leave it be, at least for the time being. I miss its shining across the Town at night, as I'm sure many others do.

On a more cheerful note, one of our ringers has recently given birth to a beautiful baby girl. A team of de facto Aunties and Uncles are looking forward to meeting her soon, but perhaps a bit early to hope that she might become a ringer one day!

It won't be long before we are ringing for the beautiful Christmas celebrations, and to welcome 2024. This year has flown by. I'm sure time didn't always go so quickly!

1st CHOICE PAVING

Drives, patios, paths, landscaping, resin bound aggregates and artificial grass.



01736 753087 07969 960128

www.1stchoice-paving.co.uk



If your list of New Year Resolutions includes trying something new and different, why not give bell ringing a go? We are always ready to welcome new members of the band, and you would be helping to maintain an ancient skill. Give Tina Morgan a bell (groan!) on 756567 for more detail.

*In memory of
Michael Smaldon, Tower Captain,
died November 27, 2022.*

**St Elwyn's Church invite you to an
Angel Festival:**

- 13-15th December, 10am - 1pm
- 16-19th December, 10am - 3pm

Tea & Coffee Available. All welcome!

*And suddenly there was with the
angel. A multitude of the heavenly
host Praising God (Luke 2 : 13)*

Christmas Services:

- 17th December - 4pm - Service
of Nine lessons and Carols
- 24th December - Christmas Eve
- 9.30am - Eucharist
- 24th, 11.30pm - Midnight Mass

**JAKE'SMOBILE
PHONE REPAIRS**

01736 757233

07873 799 930



**LAWRENCE
BUTCHER CHIMNEY
SWEEP**

Traditional and power
sweeping, Solid fuel
servicing and repairs,
certificates issued, CCTV
flue inspections, cowl
fitted, CO alarms fitted,
fully insured

07966 547829

01736 850033

loloubutcher@aol.com





Hayle Heritage centre has now closed for winter after a wonderful 2023 season. This year, we have enjoyed another fascinating programme of evening talks, two temporary exhibitions (exploring the stories of J & F Pool and Hayle Carnival) and have launched a package of sensory-rich learning resources, as a partner organisation on the Sensory Trust's More Than Words project. These will soon be available to access on our website.

Copies of the Story Trail booklets are available to pick up now from Hayle Library.

During the winter, our volunteers will carry on working away behind-the-scenes, as we prepare for a new exhibition for 2024: "Hayle Herstory", uncovering the many untold stories of the women of Hayle and West Cornwall.

Volunteer Dave Birch has recently completed the mammoth task of organising over 800 books using the Dewey Decimal System; next year, we hope to be able to make this wonderful resource accessible in the form of a free reference library for public use. There are many



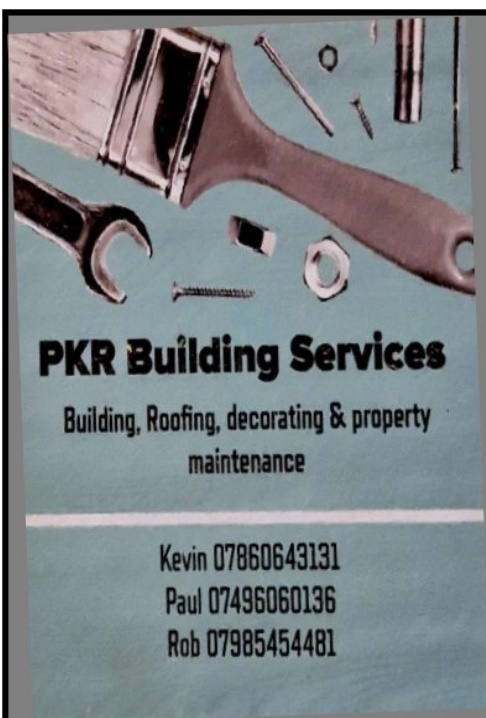

wildanet
From anywhere to everywhere

We're building your new Full Fibre network

Thank you for your patience whilst we are working to install your new High Speed Full Fibre Broadband network in your area as quickly as possible.

Register your interest now:
wildanet.com/hayle

Wildanet Limited. Westbourne House,
West Street, Liskeard Cornwall, PL14
6BT. Registered in England and Wales
no 10586466. Members of UK WISPA
and RIPE



PKR Building Services

Building, Roofing, decorating & property
maintenance

Kevin 07860643131
Paul 07496060136
Rob 07985454481

volunteering opportunities available at the Heritage Centre, so if you love local history and are keen to meet likeminded people, please get in touch by emailing daisy@harveysfoundrytrust.org.uk

To add to our growing social history collection, we have acquired some fascinating items this year. Most recently, this has included several historic textile banners from St Erth Methodist Chapel.

We are thrilled to announce that we now have a new email newsletter, detailing Heritage Centre activities and events, and shining a light on items from our museum collection and archive. Please get in touch if

you would like to be added to our mailing list.

Visit

www.hayleheritagecentre.org.uk or follow us social media.



MOUNTAIN - ROAD - BMX SPECIALIST

Bicycle Sales and Repairs

Tel: 01736 753825

36 Penpol Terrace, Hayle TR27 4BQ
www.haylecycles.com

Malt Decorations

Interior & Exterior
Painting

07795 083 839

www.maltdecorations.com

Hayle & Surrounding
area


ThurstanHoskin
SOLICITORS

YOUR LOCAL SOLICITOR

At Thurstan Hoskin we like to take the stress and worry away from you.

We offer expert legal advice on :

- Property Services & Conveyancing
- Wills, Probate, & Powers of Attorney
- Deputyships, Trusts & Inheritance Tax planning
- Commercial Property & Leases

HAYLE  **01736 230 055**

33 St Johns St, Hayle, TR27 4LL | Mon-Fri 9am - 5pm

info@thurstanhoskin.co.uk

www.thurstanhoks.in.co.uk





Hi everyone. Well Christmas and our panto "Bah Humbug" are both rapidly approaching. The dates for the panto are Wednesday 27th December at 7.30, Thursday 28th December at 7.30, Friday 29th December at 7.30 and Saturday 30th December at 2.30 and 7.30. We will be performing as usual in the Hayle Day Centre, next to the library. We only have one matinee so if you want tickets for that please book early. Tickets will be on sale from, Friday 1st December at Blewetts Toy shop in Foundry, or on the door. Alternatively you can phone Ken Townend on 07733156530 and book tickets.

We are desperately in need of new members to help backstage, front of house and of course onstage. We are thinking ahead to our next panto and are hoping to perform Cinderella, possibly in the May 2024 half term. We are a varied lot with ages from 10years to 84years. Children must be 7years or more and must be accompanied, at all times, by a parent or responsible adult. The first evening is free and then we charge £1.00 for children and £2.50 for adults, to help cover the hire of the hall. We meet in the Hayle Day Centre every Monday evening between 7.30 and 9.30. If you or anyone you know may be interested, please just turn up on a Monday evening or call Ken Townend on 07733 156530 for more information.

BUSH MONKEY **GARDEN SERVICES**

Keep it simple Keep it local !
Over 25 years experience with that
personal touch.
Qualified and fully insured
Lawn care
Planting schemes
Weed & insect control
Tree hedge & shrub pruning
Garden maintenance & design
Decking Patios
Pressure washing Call Anthony for free
no obligation quote or advice.
07825 881 078
bushmonkeygardenservices@yahoo.co.uk

ANGOVE **SPORTS** **COPPERHOUSE,** **HAYLE.** **Tel(01736) 752238.**

**For all sports equipment,
clothing, footwear
and fishing tackle.
Rackets repaired
and restrung.**





Ho! ho! here we go again cards, gift wraps ,ribbons and bows not forgetting the seasonal Christmas Turkey or is it nut roast. Also let's not forget the Lions famous Santa Sleigh that is being dressed, cleaned and made ready to travel round the streets of Hayle and Connor Downs. This will take place during the week of December Monday 4th to Friday 8th between 6pm-8pm. Weather depending.

Hayle Lions are out and about all year helping where needed in our own community, internationally or

other charities. We are pleased to announce that seven local pubs have agreed to assist with our Christmas Hamper raffle: Turnpike, Cornubia, Royal Standard, White Hart, The Badger, Old Quay House and the Rugby Club - many thanks.

To help with our funds we also rent out a spacious marquee. Hayle Lions meet at Passmore Edwards Institute on the 2nd Tuesday of each month at 7.30pm. All welcome to meet us over a cuppa or two.

Many blessings for the festive season and good wishes for 2024.

Please see the back page of this issue of the Pump for Santa's Sleigh Street routes.

PIPS PAD FITNESS

Hayle Rugby Club
Tuesdays 6.30-7.30



Structured session plans incorporating jump rope, Agility Ladder drills, bodyweight exercises & padwork drills.

Booking essential. All equipment supplied- any ability catered for - over 18s- only first session free, thereafter £7 per session.

Fully qualified & insured instructor.

Contact Pip to book on

07979 934856



- Coffee & Cake
- Breakfast Lunch Dinner
- Sunday Carvery
- Weddings
- Functions & Events
- Under 5's Soft Play

01736 808754

For prices & opening times, please see
WWW.COASTBEACHSIDE.CO.UK



Coast Kitchen-Bar-Terrace,
Beachside Holiday Park, Hayle,
Cornwall, TR27 5AW

Join us for stunning panoramic views of **St Ives Bay** from the terrace of our restaurant & bar



**WELCOMING
NON-RESIDENTS**

Soft play drop-in sessions Wednesdays 9am to 1pm
Senior lunch club Fridays 12pm to 3pm



The Sunflower Gallery

Winter draws on as they say, and we'll all be needing our thermals as the days shorten and the nights lengthen, getting ever closer to Christmas.

For myself and other makers, there are opportunities around with extra craft markets happening locally. I have been at the Phillack Church Hall Farmers Market and Craft Fair on alternate Fridays for a few weeks now, where I have met lots of locals and been able to talk about my work, picking up a few 'students' for my pottery classes. If you would be interested in my Play with Clay sessions email me at linda.ezlxq141@gmail.com or text 07415 471378. The classes are one-to-one at £20 for an hour, or £35 for two hours. This covers all materials including glazes, and kiln firings. The Gallery itself is always open if I am here, at 47 Mellanear Close, Hayle.

Other craft markets I'll be attending between now and the end of the year are:

- The Christmas Farmers Market and Craft Fair at Phillack Church Hall on Saturday December 2nd from 10am-4pm where Santa will be joining us;
- Phillack Church Hall again the following Friday December 8th (10am-1pm);
- Saturday 16th December at St Erth Church Hall once more from 10am-Noon;
- And a final one before New Year at Phillack Church Hall, on Friday December 22nd, from 10am-1pm.

We have to catch opportunities like this to show off our wares as January and February are normally very quiet for sales. I am no exception, but in my case I have some students booked for Play with Clay sessions in New Year, which should be something fun to look forward to in those cold months.

I am clearing several lines of older stock at reduced prices on the run up to Christmas, so if you want a few stocking fillers or something for that

One Day

Antique Vintage Collectables & Militaria

Buying & Selling

onedayantiques@yahoo.com

Jason Day 07909 850 563

Unit 14 Old Foundry Chapel Hayle

TR27 4AB



difficult auntie you know where to come. I look forward to seeing you soon, keep warm and have a lovely Christmas.

**Who hides in the bakery
at Christmas?**

A mince spy!



CANN CARE

Personal Assistant/Carer

with 8 years experience.

DBS & Insured. Covering Hayle &
surrounding area.

07874 146 348

cann-care@outlook.com



canncarecornwall

Bodriggy Bug Mansion Gardens on King George V. Memorial Walk

At the south west in Bloom Awards in October I was thrilled when Bodriggy Academy was awarded an outstanding certificate level 5 for their gardens. This is the highest level achievable within the 'It's Your Neighbourhood' Awards The children met the judges at their plot and talked very confidently about the gardens and despite being shady area, their sculptures depicting flowers were lovely. Well done Bodriggy and I look forward to continuing our work and planning for future ideas on our plot.

*Sandie Morgan, H.I.B. Volunteer
and Academy Coordinator*

JC ELECTRICAL

Your complete 24 hour Electrical Service

**Rewires • New Build • Lighting •
Showers • Extra Sockets • Heating**

City & Guilds Qualified (Tests to BS7671)

Part P registered

Prompt and reliable friendly service

Free estimates and all work guaranteed

Office: 01736 754543

Mobile: 07739 577549



Friends of the Towans

Art Club

We would like to thank everyone for attending our events and supporting our charity Friends of the Towans during 2023, to Gwithian Chapel and Gwithian Church Hall for use of their beautiful spaces and to Dynamic Dunescapes for making it all possible.

It's amazing to think another year has nearly gone by, but the Art Club have some lovely memories of drawing and painting together out there on our beautiful Towans.

Our first session of 2023 was on 26th March, to welcome in British Summertime, drawing and painting on Mexico Towans, we celebrated World Sand Dune Day in June, painted a Buck Moon in July, an Autumn Equinox sunset at St Gothians, guided sketchbook walks on Godrevy Warren with Martin Rule and a Botanical Art events for families with children at Gwithian Green in August with Dominica Williamson. We've also explored and drawn Sea Holly with a fun mono-printing Christmas card workshop.

Art Club had our first ever Fundraiser at the AGM at Paradise Park, raising over £300, with thanks to our regulars who generously donated their artworks, and to our supporters. Proceeds going to the upkeep of our precious Towans.

You will now be able to see and purchase original Art Club images at Paradise Park.. thanks to Nick Reynolds we have a dedicated board in the entrance.

More recently we took part in the Big 'Dune' Draw on the dunes and at Gwithian Chapel, which was a fabulous event, with a raffle, quiz and tea treats.

However, there's still time to squeeze in one more workshop this year, but indoors this time.

We will meet at Gwithian Church Hall, a lovely venue, perfect for a Pre-Christmas Art Jolly! ~ some art and a bit of fun.

Please bring anything festive to form our Festive still life, which we will paint, and we can eat and drink it afterwards ☐ you can bring holly or Christmas decorations etc to the table instead of edibles.



THE COPPERHOUSE CLINIC

5 Market Square, Hayle, Cornwall. TR27 4EA
01736 757524

www.thecopperhouseclinic.co.uk



GAIT ANALYSIS
LOWER LIMB BIOMECHANICS
LAB MADE PRESCRIPTION
ORTHOTICS
HCPC REGISTERED

CHIROPRACTIC
GCC REGISTERED

CHIROPODY & PODIATRY
LASER TREATMENTS
HCPC REGISTERED

This will be on

Wednesday 20th December

2-4.30pm

This will be a lovely chance for us to meet up but do please come and join in if you've not been before...

And, Next year there will be an opportunity for those of you who are a bit shy to come and explore our theme. "Can't Draw for Toffee" if that sounds like you, please do come and join us, we'd love to meet you. All Art Club events are free.

For more information and to book please email

friendsofthetowansartclub@gmail.com

And follow us on Facebook: Friends of the Towans Art Club and Instagram @friendsofthetowansartclub

Best wishes, Hilary.



How do snowmen get around?

They ride an icicle!

"The Christmas Spirit"

Heyl St Piran Singers Ladies Choir are getting into the spirit of Christmas and are practising hard for a joint concert they are holding with the One and All mixed voice Choir. We would love it if you could join us at St Erth Church, on Thursday, 14th December at 7.00pm. The choirs will be singing a collection of Christmas themed music - carols and celebratory songs. Entry will be £5. Refreshments will be available for a donation and there will be a raffle with gifts donated by local businesses. All proceeds from the concert will be given to the much loved local charity - St Julia's Hospice. We are hoping you will come along to help us spread the Christmas Spirit whilst supporting this very worthy cause.



**Hedging
Plants**

Griselinia.

**All sizes. Supplied or
planted if required**

Tel 01736 332369

I would like to introduce myself, my name is **Amy Brothwell** and I have been helping with chiropractic treatment since I graduated from the AECC in Bournemouth in 2019.

Common conditions chiropractic treatment can help with...

- Neck and back pain
- Headaches
- Sciatica / nerve pain
- Joint pain
- Osteoarthritis related pain
- Postural related issues



British
Chiropractic
Association



The Copperhouse Clinic, 5 Market Square, Hayle TR27 4EA—01736 757524

www.thecopperhouseclinic.co.uk

If you are interested in joining a choir, this would be an ideal opportunity to come and meet us - both choirs are currently looking for new members to start in the New Year

For more information contact Carol on 01736 753496

Merry Christmas everyone!

Who is a Christmas tree's favourite singer?

Spruce Springsteen!

What did Mrs. Claus say to Santa Claus when she looked up in the sky?

Looks like rain, dear!



Since the last edition we have welcomed a number of new people to the Hayle Memory Cafe where they have

enjoyed a wonderful harvest festival with soup and roll together with a harvest raffle, a variety of singers, bell ringers, made fat balls for the birds in the garden, quizzes, decorated fairy cakes with smarties for National Smartie Day had puddings and custard for National pudding Day and a Cornish session with conundrums and of course pasties!

Coming up before the year end we have ukulele groups, Christmas craft activities and our Christmas party.

Our wonderful activities volunteer has already put an exciting programme for

**WEST
CORNWALL
plastics**



- QUALITY SERVICE
- QUALITY INSTALLATION
- QUALITY PRODUCTS

We are delighted to announce our recent award of the Which Trusted Trader Scheme. We have been inspected by Which magazine and Ultraframe, the leading manufacturer of conservatory roof solutions, and passed with flying colours.

As well as carrying a wide range of PVC building products in our warehouse, our installation teams carry out work to the highest standard, giving you the peace of mind that comes with using a Which Trusted Trader.

I would like to thank the readers of Hayle Pump magazine for their continued support, as we serve the people of Hayle and beyond with the best PVC and Aluminum building products

Thank you
Nick and the WCPL team

INFO@WCPL.CO.UK
01736 759444
@WestCornwallPlastics



WestCOAT

CERTASS

2024. Do come and join us. Hayle Memory Cafe meets on 1st and 3rd Monday afternoon each month at Hayle Rugby Club, Marsh Lane, TR27 4PS, 2-4pm. Come and join us for a fun and friendly afternoon with a cuppa. It's free but donations are always welcome.

Dates for the rest of this year are 20th November, 4th and 18th December.

For more information contact us on 07513 221066

The Penpol Friends proudly present our CHRISTMAS EXTRAVANGANZA

featuring:

- CAROL SINGING
- LOCAL CRAFTS
- MINCE PIES

- FUN AND GAMES
- SANTA'S GROTTO
- SWEET SHOP
- MULLED WINE
- TOMBOLAS

COME AND JOIN THE FESTIVE FUN!
Wednesday 13th December | 5.30pm | Penpol School



David N'jie
PAINTER & DECORATOR



07944 156995



01209 831397

dave.painter@hotmail.co.uk

Trethannas Cottage, Praze-an-Beeble
Camborne TR14 0LH



Mr. B's

Famously Fresh Ice Cream

- Coffee & other hot drinks
- Traditional ice cream desserts
- Healthy salads
- Fudge - Buy 3 bars and get a 4th one free!!

Eat in or take away
(subject to Covid restrictions)

OPEN DAILY

Fore Street, Copperhouse
Penpol Terrace, Foundry

+ mrbsicecream

- mr_bs_ice_cream

Tel: 01736 757925



www.mrbsicecream.co.uk

Des Button

Electrical Services &
Supplies

Rewiring,

Fitting Consumer
Units,

Sockets & Switches

Emergency callouts.

For Free Estimates &

Friendly

Advice

Call

01736

753211



Blue Plaque Story

This time, we look at Front Garden Shops! Blue Plaque No. 29 adorns the only 'front garden shop' on Hayle Terrace. The shop was built by Samuel Hosken, a farmer, in 1891, and served as a farm shop and café. The granite building once had notable coloured and etched glass in the windows, sadly removed due to safety concerns. The building is Grade II listed.

If, perchance, you ride the top deck of a bus along Penpol Terrace, you will easily see that all the shops there are front garden shops.

In the early 19th century, the main employer of that time, Harvey's, paid their workers with tokens, which had to be spent in Harvey's stores. This

system was abandoned in 1831, and people soon set up their own businesses by building shops in their front gardens.

Many of the shops, at Penpol, Chapel Terrace, and Copperhouse, remain, but some have been modernised at the expense of historic character. All the garden shops we see today are evident on the Ordnance Survey maps of 1880, so they have been here for a long time.

One shop on Penpol Terrace, Carnsew Gallery, is particularly attractive and ornate. Once a butcher's shop, the porch retains a fine mosaic floor, depicting a bull's head, and fancy scrolls on the wall under the window. It is worth a stroll through Hayle to see the detail of the shops you visit regularly, that you



HYDRO BATH BLOW DRY
BRUSHING NAIL CARE
EAR/EYE CARE FLEA TREATMENT
DEODORIZE CLIPPING.

ALL NATURAL PRODUCTS.

PH 07903 042950

Lesley 01736 850971

E-mail lesleyandkeith@msn.com

City of Guilds Trained

Brett & Leni
HANDCRAFTED JEWELLERY

**Make your own perfect gift at our
jewellery making workshops**

Gift
Vouchers
Available



We offer one-to-one, parent and child or small group bookings. All materials and tools provided. Covid-19 safety measures in place.

To book your workshop session contact us:

Tel: 0757 077 4332 E: sales@brettandleni.com

Shop online: www.brettandleni.com

Unit 6, West Stables, Foundry Lane, Hayle

may have not noticed before.

On a different note, I learnt very recently that the name Fore Street, common in many towns, indicates that it led to the local market. That was an interesting discovery for me! There is always something new and interesting to discover in our ancient and historic town.

PS. The Cross on the Tower is fixed! We are delighted it will be on for Christmas, and the winter, all being well.

Hayle WI

Hayle WI has enjoyed another successful year with many activities on offer in addition to our monthly meetings. At our Annual Meeting in March, we welcomed Sue Watts as our new President. At our monthly meetings we have had some interesting speakers including Liz Hargreaves who was accompanied by her own guide dog to speak about the charity, Guide Dogs for the Blind, our adopted charity this year. We had fun learning some artistic skills using watercolour and ink with local artist, Hilary Gibson. In September David Chapman showed some of his beautiful photography

Hayle Mobile Barber

Over 30 years
experience.
Tel Arran on 07340
511 070 for
appointments and
enquiries



to illustrate his talk on 'Gardening for Wildlife.' Some ladies have been involved in local campaigns to find out more about the proposals from Planetry to place magnesium hydroxide in our bay as a way of reducing CO2 in the atmosphere. As part of the national campaign to highlight and prevent river pollution, four ladies attended an interesting presentation and discussion concerning the issues in our own county. In August we were delighted to be invited to the Hayle Wellbeing Day at Hayle Academy. Our role was to supply delicious cakes to make everyone feel good. We were also showcasing Hayle WI as a place where ladies can meet to socialise and make new friends as well as learn new things.



The Mad Hatter

Bed and Breakfast Open all Year !
Rooms overlooking Copperhouse Pool.

Full English breakfast.

Competitive rates.

*Relax with a Scrumptious Cream
Tea or Homemade Cake in the
Café or Tea garden.*

Open 10am-4pm

Monday to Sunday.

Closed Tuesdays.

From Easter

73 Fore St Hayle TR27 4DX
01736 754241 07871 165 381

www.cornwall-online.co.uk/madhatter
paulinemadhatterbandb@outlook.com
Dogs welcome

Each month there is a coffee morning at a venue in Hayle. There are two walking groups; one for those who like a gentle stroll and a chat. The other is a hiking group where a longer and more challenging walk is organized. We have enjoyed trips to Kids R Us to see Les Misérables; had fun in the thermal pool in Penzance and had a rather adventurous day out on the Coaster to Lands End which didn't go quite to plan. Our gardening group have been hard at work on the flowerbeds on Penpol Terrace; we also finally planted our memorial tree for Queen Elizabeth which is on King George's Walk.

On a sad note, a past president and long serving member of Hayle WI, Geraldine Coombes passed away after a long illness

We are now looking forward to the festive season when we will be making some angels to be used as part of the St Elwyn Church display. Our Christmas Party in December will be another joyful event. In January we take a break before getting together on February 4th at Coast for our New Year Sunday lunch.

We have space for six more members at present so if you have been thinking about joining us why not come along? Our monthly meetings take place on the first Tuesday of the month. Call Sue for more information or email the secretary, Margaret at wihayle@gmail.com We also have a Facebook page and a website: <https://margie0706.wixsite.com/haylewi> for info & photos.

Dreckley's Waste Collection House Clearance & Deliveries

No job too small

**Garages, Houses, Sheds, &
Gardens cleared.**

**Fully registered & insured.
Honest reliable friendly
service.**

**Call Suzanne on 07877 325404
Email: dellamuro@btinternet.com**



Hayle Methodist Church wishes everyone a peaceful Christmas.



Special Christmas Services

Dec 3rd 3:30pm Messy Church with
Christingle making (celebration at 4:20)

Dec 10th 10:30am Family Service

Dec 17th 10:30am Carol Service

Christmas Eve Service 10:30am

No service on Christmas Day

www.haylemethodist.co.uk



Haylemethodistchurch

Pastor Sarah Flowerday 07739547434

Hayle Farmers and Craft Market

Hayle Farmers and Craft Market is held every Friday at Phillack Church Hall, Hayle TR27 4HE from 10am to 1pm.

We are also having a Christmas Market on Saturday 2nd December, where Hayle & District Lions Club will be raising funds for the local community, and will be bringing Father Christmas in his Sleigh to come and see the children as well as having a stall & raffle.

We welcome back Beewise with local Honey, Beeswax candles & gifts from Leedstown and Nickys Flowers with her popular Christmas Wreaths & Floral arrangements.

Plus Fresh Fruit & Veg, eggs, Della Catering with homemade cakes & savouries, Samosas & Bhajis, Artisan Cheeses, Jams, Chutneys & mincemeat, Roy's plants and Craft stalls selling unique handmade gifts made in Hayle & West Cornwall.

Our last Market will be Friday 15th December, and we hope to be back in February 2024. Wishing all our customers a Merry Christmas and a Happy & healthy New Year.

Tarina
Mobile Hairdresser

City and Guilds NVQ level 3
30 years experience
Hayle and surrounding areas
01209 832945
tarinamobilehairdresser@gmail.com

ST ERTH FILM CLUB

At St Erth Church Hall, 7.30pm.
Membership £6 which includes entry, then it just £3 per film.

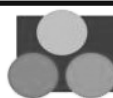
Saturday 16 December - What We Did on Our Holiday

Saturday 20 January - The Unlikely Pilgrimage of Harold Fry

Hayle Poppy Appeal Organiser

This was my first year as the Poppy Appeal Organiser, I would just like to thank all the kind volunteers who helped me with the collecting at Asda and Lidl's stores. Also to all the local businesses who put collecting tins in there establishments.

We are busy collecting these tins now and counting the money. I hope



CVC
Solicitors

Confidence to Care for all your Legal Needs!

We offer advice on the following:

Business & Employment, Conveyancing & Property Matters, (including Commercial), Family & Children, Civil Litigation & Personal Injury, Wills and Inheritance Tax, Lasting Powers of Attorney, Probate & Estate Administration, Elderly Client and Care Home Fees.

We have offices in **HAYLE, PENZANCE** and **ST IVES**

We can also undertake home appointments in Hayle by arrangement. Please call us to make an appointment on:

01736 362362 or

email: enquiries@cvc-solicitors.co.uk

or see our website:

www.cvc-solicitors.co.uk

to give you the total amount collected in the next issue of the pump. Thank you all very much,
Josephine

IN PRAISE OF NHS CORNWALL

I have had the misfortune to need a huge amount of medical attention since 2018. This has involved being an in-patient in Treliske, Barncoose and Penzance and an out-patient in Treliske, Penzance and St. Michael's on multiple occasions. Fourteen admissions to Treliske alone for everything from a burst aortic aneurism to a heart stent has meant that I have gained a very good insight into many aspects of hospital life.

Of course, not everything has gone smoothly and there has been the very occasional hiccup, but I have to

say that my experience has overwhelmingly been contrary to that presented in the national and local South-West TV new bulletins. Several calls to 111 have resulted in house visits at all times of the day and night and the ambulance service has been magnificent and has responded remarkably quickly to calls for assistance. Some personnel even recognise me now! I have never felt that I have been treated as a mere number and every care has been taken by the consultants to ensure that I have not left hospital without the best possible treatment having been applied. It has been very easy to talk to them and they have always been prepared to answer my questions. One surgeon got out of his bed to perform an emergency operation on me in the middle of the night on one occasion, which undoubtedly saved my life.

I would say two things about the nurses. They work extremely long hours and are on their feet – especially during the day shifts – almost all the time. They have really cared for me as an individual and have made my stays in hospital as comfortable as possible. This has



TP Wills & Probate.
Wills and Estate Planning Consultant.

**"Where there is a will there
is a way to protect your family"**

*** WILLS * TRUSTS**
*** ADVICE FOR SENIOR CITIZENS**
*** POWER OF ATTORNEY**
*** PROBATE ADVICE**
*** CARE FEE PROTECTION**

Call Tim Poole
01736 758418 or
07900 323939



Institute of
Professional
Willwriters

MEMBER



APPROVED CODE
TRADING STANDARDS

BIZ AND BYTES

07974 647524 01736 755971

If you require computer assistance, either training or to resolve a problem then give us a call. Visits arranged to suit you.

Looking after the home user and small business.

**WEBSITES • BROADBAND • TRAINING •
COMPUTER SUPPLY • TYPING**



www.bizandbytes.co.uk
enquiries@bizandbytes.co.uk



included dealing with a number of physical accidents on my part, which could have resulted in a great loss of pride! Our hospitals are chronically understaffed and depend hugely on imported nurses and doctors from overseas. I have found my conversations with these to be extraordinarily interesting, as they have shared something of their origins and culture, and often very amusing.

In Hayle we are so fortunate in having Bodriggy Health Centre and its lovely nurses as our first port of call with the Pharmacy next door. Dr. Curnow our doctor has been extremely knowledgeable about the various conditions with which we have presented; but she has also in a very sympathetic and sensitive way in her care for us gone beyond what in today's society I would not have

expected. This has included a number of house calls.

I have no doubt that what is portrayed on the local news is undoubtedly true but it is often anecdotal and does not accord with my own experience. I remain eternally grateful for the treatment I have received from the staff of those hospitals in West Cornwall even on Christmas Day, without whose expertise and care I surely would not be alive now.

I hope desperately that the shortages in staffing will be ameliorated by the national Government through training of more people in medicine, better salaries to attract and retain staff and the provision of a greater housing stock in the South West.

I would welcome other people's comments. *Samuel Marsden*

TJ'S CARPETS LTD

WIDE SELECTION OF CARPETS,
VINYLs AND LVT!



FREE MEASURING AND ESTIMATE SERVICE!

HOME SELECTION SERVICE
AVAILABLE WE BRING SAMPLES
TO YOUR DOOR, OR VISIT
OUR SHOWROOM!



Tolroy Garage, 58 Mellanear Road, Hayle, TR27 6HF

01736 757540 OR 07976608215

Hidden Words Quiz 171

Hidden somewhere in each sentence there is the name of a metal

1. There is a quiz in Connor Downs Next week.
2. The object in golf is to get the ball in the hole.
3. The souvenir on the mantelpiece is from Venice.
4. When I got back, there was this cop perusing my paperwork.
5. In the snake-house there were cobras, sidewinders and vipers.
6. Looking in the mirror, he realised he was getting old.
7. Is that fossil very old, do you think?
8. Our family sits in this pew, Terry's family sit in that one.
9. I've been everywhere man. Zurich, Rome, Venice, Berlin.....
10. She's got real taste-elegant clothes, good make-up etc.
11. Pumpernickel is a coarse, dark rye bread from Germany.
12. San Francisco, Boltimore, Boston, Seattle, I've been there too.
13. Would you settle a dilemma? Is it iron or steel?
14. In the summer, Cury gets a lot of through traffic.
15. In Canada we saw an artic wolf rambling across the ice.

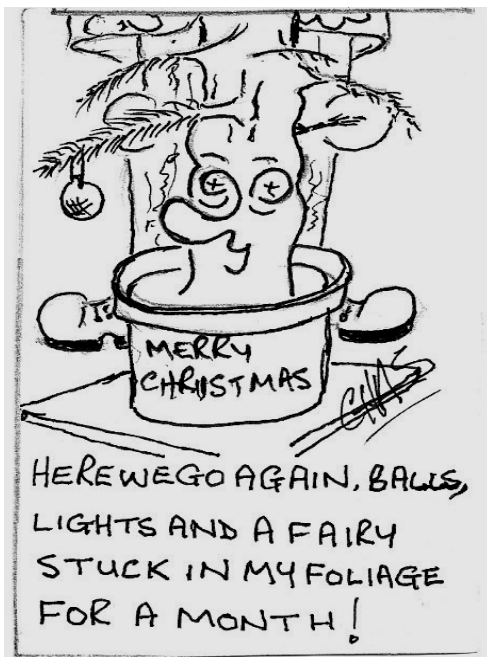
To win a prize of £20 please send your answers by **13th Jan 2024** along with your contact details to editor@haylepump.org.uk or use any of our drop-off points on page 2.

Answers to transport quiz in last issue

1 Cycle. 2 Canoe. 3 Boat.
4 Bus. 5 Tractor. 6 Coach.
7 Taxi. 8 Ski. 9 Sledge/Sled.
10 Wagon. 11 Train. 12 Plane.
13 Tram. 14 Ship. 15 Rickshaw

The winner, drawn at random was: Isabella Oliver

You are very welcome to send in a quiz on any theme of your choice.



Club Listings

Beachfit Outdoor Fitness on the beach in Hayle. Every Mon, Tues, Wed and Fri mornings. 07814 352945
beachfitcornwall.com for timetable.

Bodriggy Mental Health Group
Weds 1-4 pm, Day Care Centre Annexe

Bridge Club Every Mon. Carbis Bay Memorial Hall 2-5 pm. £2 inc. tea & biscuits. Graham 01736 762512

Cornish Crochet Corner first Friday of each month 2pm-4pm at Cornish Arms. No experience required. 01736 753237

Cornwall Scale Modellers 2nd Wed of month, Hayle Day Care Centre, 7-10pm. friendly club, talks & display current models, tea/coffee, £2.30

Friends of The Towans Most Tues & Thurs 10am-2pm + 1 Sunday a month Sara Dowler, Volunteer Coordinator. 07393 522875.

Fun Bingo 2nd Wed of the month, 7pm Connor Downs W.I. Hall Rosemary Smith 07817 078520
roandrod@hotmail.com

Hayle in Bloom. Last Mon of the month (not Aug & Dec) Passmore Edwards Institute 7pm.
www.hayleinbloom.com

Hayle Amateur Dramatic Society
Hayle Day Care Centre, Mon eve 7.30 - 9.30. Call Ken on 07733 156530

Hayle Breezers Group Thursdays. 1.30pm Passmore Edwards Inst. April Hogarth 0781 376 707, Bob Scales 01736 751735

Hayle Art Society Passmore Edwards Institute on Tues 1.30-3.30 & Wed 7.00-9.00 Chris 01736 757720 or Penny 01736 756445

Hayle Christmas Lights last Thurs of a month (except Dec) 7pm at Hayle Day Care Centre Annexe. New volunteers are always welcome.
haylechrismaslights@gmail.com.

Hayle & District Bowling Club.
1pm Mondays. Short Mat bowling indoors in winter, Outdoors Wed 12.30 07766 662 908

Hayle Friends Group for CHSW Hospice meets informally once a month under the chairmanship of Mary Trevarthen 01736 754342
trevarthenmv@uwvclub.net

Hayle Harbour Users Association
1st Mon of month, 7.30pm. Royal Standard Pub, R Lello 01736 757632

Hayle Judo Kwai Unit 7 Rospeath Industrial Estate, Crowlas. Tues & Thurs. Sensei Richard 01736 740723 or Karen Deacon 0779 209 9979

Hayle & District Lions Club. 2nd Tuesday of month, 7.30pm at Passmore Edwards Inst. Secretary Yvonne Watson 01736 741375
yvonnemystique@hotmail.com

Hayle Lawn Tennis All ages and abilities welcome. Tremeadow Terrace, Hayle 01736 850843
www.haylelawntennisclub.co.uk

Hayle Local Vocalz Mondays 7.30pm, Hayle Methodist Church
pluing@tiscali.co.uk 754225

Hayle Memory Café 1st & 3rd Mondays 2-4pm at Hayle Rugby Club Christine 07513 221066

Hayle Methodist Church (Chapel Hill) Morning Worship 10:30 every Sunday. Coffee morning 10-12 2nd Saturday monthly. Pastor Sarah Flowerday 07739 547434

Hayle Messy Church Methodist Church Hall (Chapel Hill) 3:30-5:30pm 1st Sunday of month. Inc. free meal, no need to book. Pastor Sarah Flowerday 07739 547434

Hayle Model Boat Club Weds 7-9pm & Sunday mornings 10-12 noon, meeting at green chalet by Hayle Swimming Pool. 01736 755516, or Les on 01736 754254

Hayle Meanderers Every Weds
10.30am, Commercial Road car park.

Free + contribution to carshare.

Eddie Downing 01736 364673

Hayle Old Cornwall Society. First
Friday of month, Oct to May, at Hayle
Day Care Centre 7.30pm. Trevor
Smitheram 01736 756793

Hayle Nutty Knitters Thursday 1pm at
Cornish Arms 01736 762418

Hayle Penwith U3A at Hayle Day
Care, Chair Mike Stuckey 01736
697771 u3asites.org.uk/hayle/home

Hayle Pilot Gig Rowing Club
Rowing out of Hayle Harbour most
Tuesdays and Thursday evenings
chair@haylegigclub.co.uk

Hayle Probus Club White Hart Hotel
2nd Thurs of month for lunch 1 p.m.

Hayle Railway Modelling Club
Club Room. Unit 5, Praze Business
Park. Praze-an-Beeble. Mon & Thurs
7pm Martin Scance 07977 550051
www.haylerail.co.uk

Hayle Surf Life Saving Club
Riviere Towans Hayle TR27 5AF
Captain: Dave Parker 01736 755303

Heyl St Piran Singers
Every Wednesday at St Erth Old
School Room 7pm to 9pm. Carol
Renton 01736 753496 or Ann
Thomson 07766 128889

Hayle Twinning Association
Meetings usually 2nd Weds of month,
2-3:30pm, contact Mike Stuckey (chair)
01736 697771 or email
mikeajstuckey@gmail.com or Maureen
Mason (secretary) 01736 438462
maureenmason2000@yahoo.co.uk

Heyl Town Band Rehearsals Weds
6:45-8:30, Coffee and a 'blow'
session the second Saturday of each
month from 10:30 to 12:00. Contact
Lisa 07793 214227.

Kernow Petanque Tues 1pm for a few
hours at North Quay Bouledrome.
M. Hypponen 07340 708056

Macmillan Cancer Support
Three Trees, 16 Penmare Terrace,
Hayle on most Thursdays at 7.30pm
Suzanne Benney 01736 753635

One & All Choir (mixed) Tues 2pm to
4pm, St. Erth Church Hall. £2 a
session Contact Ann Thomson 07766
128889

**Penwith Guild of Weavers Spinners
& Dyers** 3rd Sun of month (not March)
1-5pm Passmore Edwards Institute
01736 762418

Phillack Tower Bellringing every
Tuesday at 7.30pm. Tina Morgan
01736 756567

Royal British Legion Passmore
Edwards Institute. Every Mon, Wed,
Friday evening and Sat. afternoon.
Mr Alan Conquest 07470 308400

Scrabble Club at Connor Downs
2nd Thurs of month at W.I. Hall. 2-4pm
£2 for hall & refreshments.
carolinewindsor123@btinternet.com

Shore Surf Lessons for Locals
Juniors, Ladies, Gents. All abilities
welcome. Every Sat 10am-12pm &
Wed 5-7pm. 01736 755556
shoresurfschool@gmail.com

Slimming World Tuesdays 5.30pm &
7.00pm, Hayle Rugby Club, Carole
07742 972714

St Erth Sewers & Craft Group Meets
2nd Thurs of month at St Erth Church
Hall, 2-4pm. Kathy Tilby 01736 759943

St Erth Concert Band Rehearsals
Tues 7.30 to 9.30pm in Methodist
Chapel Hall. Enquiries 07394 617127

St Ives Camera Club Monday 7.30pm
at St Anta Church Hall, Carbis Bay
stivescameraclub.co.uk

St Ives and Hayle Community Choir
Tuesdays 1.30pm to 3.00pm at St Anta
Church Hall, Carbis Bay 07446 492266

Table Tennis for Fun every Friday
2pm - 5pm Leedstown Village Hall.
Info: Robert 01736 753951

West Cornwall Concert Band
Mon 7-9pm at Camborne Wesley
Church – email Kathleen Kessell at
westcornwallconcertband@gmail.com

W.I. Hayle 1st Tues of month, 7pm in
Esme Jelbert Room at Passmore
Edwards Institute. Sue Watts. 07786
646980 wihayle@gmail.com

To appear on this page see page 2.

- | | | |
|--------------------------|-----------------------------------|-------------------------|
| 22 1st Choice Paving | 36 Drecklys | 14 Property Maintenance |
| 08 Ali Zip | 07 Farm Shop | 14 Railway Holidays |
| 10 A. McDonald | 12 Fiona Blinds | 19 Saints Funeral |
| 16 All Aerials | 19 Flowertime | 21 Shiatsu |
| 26 Angove Sports | 25 Hayle Cycles | 04 Slimming World |
| 27 Beachside | 03-16 Hayle Day Care | 08 Sweet Williams |
| 13 Big Pink Tree | 20 Hearing Services | 05 Sylvia's Exercise |
| 38 Biz and Bytes | 31 Hedging Plants | 37 Tarina |
| 21 Blewetts | 23 Jake's Mobile | 25 Thurstan Hoskin |
| 34 Brett & Leni | 29 J C Electrical | 39 T J Carpets |
| 26 Bush Monkey | 04 Julia Woodhams | 38 T P Wills |
| 11 Cafe Riviere | 05 Kim Hopkins | 13 Transformations |
| 29 Cann Care | 06 Lewy's Fish & Chips | 08 Webb & Philp |
| 23 Chimney Sweep | 35 Mad Hatter | 32 W. Cornwall Plastics |
| 15 Cliffords Plumbing | 25 Malt Decorators | 24 Wildanet |
| 30 Copperhouse Clinic | 35 Mobile Barber | 43 Winns Funeral |
| 31 Copperhouse Clinic | 12 Mobile Foot Clinic | |
| 18 Cornish Arms | 33-6 Mr B's | |
| 17 Cornwall Chiro clinic | 28 One Day Antiques | |
| 37 CVC Solicitors | 21 Passmore Edwards | |
| 34 Dapper Dogs | 11 Paul Sherris | |
| 20 Dave Thomson | 10 Plantech | |
| 33 David N'jie | 15 Philips pasties | |
| 33 Des Button | 27 PIPS Pad Fitness | |
| 17 Direct Transport | 24 PKR Building | |

**Pick up points in bold.
Copperhouse Post Office.
Warrens at Foundry,
McColls, Hampsons, Old
Foundry Chapel,
Spar, Farm Shop
Lewy's Fish and Chips**



W J WINN FUNERAL DIRECTORS



We are here to help you 24 hours a day

- Funeral Pre-Payment Plans • Memorials • Private Chapels of Rest

WJ WINN

Trenwith Terrace
St Ives TR26 1QE

Tel: 01736 793029

WJ WINN

69 Fore Street
Hayle TR27 4DX

Tel: 01736 752124

CHARLES BRYANT & MARAZION FUNERAL SERVICE

North Road, Golsithney, Cornwall TR20 9JY

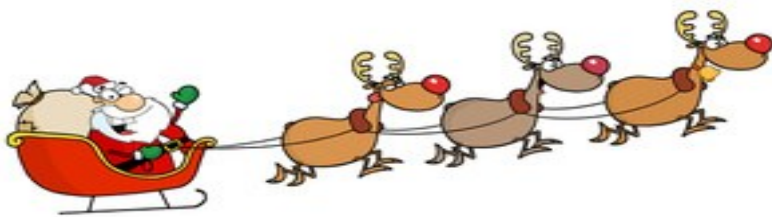
Tel: 01736 710318



Part of Dignity plc. A British Company



SANTA SLEIGH ROUTES XMAS 2023



Monday 4th Dec: Starting from Hayle Football club. Pentowans Gardens, Loggans Way, ***Connor Downs:*** Trevarthen Close, Greenbank, Willoughby Way, Arundel Way, Ellis Meadow, Turnpike.

Tuesday 5th Dec: Starting Hayle Football Club. Horwell Drive, Sparrow Close, Godrevy Drive, Sorell Street, Travassack Manor Rd, Pools Court, Madison Close, Longcroft Crescent.

Wednesday 6th Dec Starting from Foundry Car Park. Pathway Fields, St Georges Rd, Trevithick Crescent, Coronation Rd, Curnows Rd, Humphery Davey Lane, Baileys Meadows, Rounders Rise, Chins Field Close, Longcroft Rd, Queensway, Green Parc Rd.

Thursday 7th Dec: Starting from Day Centre Car Park ; Church St, Bodriggy St, St Johns St, Trelawney Place, Trelawney Way, Mount Pleasant, Bay View Terrace.

Friday 8th Dec: Starting from Foundry car Park. Mellanear Close, Tolver Close, Ash Drive, Trellissick Fields, Gwel Trencom, Trellissick Rd

Santa's Sleigh route will be on the following week if weather is really bad.