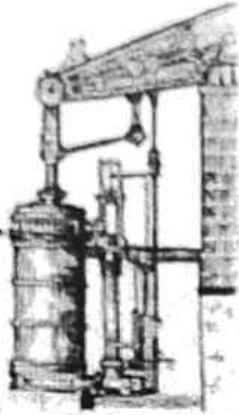


Issue 163
Aug/Sept
2022



HAYLE PUMP NEWSLETTER

We're going for Gold!!



Hayle in Bloom Judging along Penpol Terrace at W.I. flower bed with members and Judges Bob Ollier and Nigel Bloxham.

Free! thanks to our volunteers
and advertisers.



Hayle Pump Newsletter

Passmore Edwards Institute, 13-15 Hayle Terrace TR27 4BU

The Pump is produced by volunteers as a community newsletter.

NB All articles accepted are not necessarily the view of the editorial team.

View online at www.haylepump.org.uk

Editorial team contact

editor@haylepump.org.uk

Team Members

Tina Morgan (Subscriptions)

Stephen Murley (Editor)

John Cole (Distribution)

Jeff Turk (Advertising, Treasurer)

Subscriptions

Tina Morgan

Phone: 01736 756567

For 6 issues by post, please send a cheque or postal order for £4.40 made out to **C.M. Morgan** and send to **Tina Morgan, 29 Bodriggy Street, Hayle, TR27 4NB**

Please give your telephone number as well as the delivery name.

NEXT ISSUE

Oct / Nov 2022

Send any articles, copy and club listings to: editor@haylepump.org.uk

or drop off at:

Angove Sports (Copperhouse)

The Farm Shop (Foundry)

Passmore Edwards Institute

Advertising / Treasurer

Jeff Turk

Phone: 01736 752319

Send your adverts to:

ads@haylepump.org.uk

or use the drop off points.

Advertising Rates:

1/8	63 x 47.5	£10
1/4	63 x 95	£15
1/2	NA	

**NEXT DEADLINE is
13th September 2022**

1st CHOICE PAVING

Drives, patios, paths, landscaping, resin bound aggregates and artificial grass.

01736 753087 07969 960128

www.1stchoice-paving.co.uk



John Bennett



years and, realising that the Pump was missed by everyone, John resurrected, like the Phoenix from the ashes, a new version of the Pump. Desktop Publishing no less. (We cut and pasted everything by hand up till then, quite astonishing now to think about it). With his expert IT knowledge and help we were able to carry on as a newsletter recording all the goings on in Hayle and supporting businesses and charities which is one of the main aims of the Pump.

It was with sadness that we at the Pump learnt of John's unexpected death. We are one of many projects that John helped in his quiet competent way and wry sense of humour. When our office was burned down in Pratts Market, we had no choice but to close for a couple of

John was always available to help and was a reassuring guiding hand when needed and he will be sorely missed. Our condolences go out to Donna and his family.

The Hayle Pump Team



**Kim's
Yoga and Pilates at
Lelant Village Hall**

Every Monday
Yoga 8am
Pilates 9.30am &
11am


Carnhell Green Studio

**Wednesday and Friday –
Yoga 8am
Sunday 10am**
On-line and 1-1 classes also
available.

**Contact Kim
07751552313**

or check out
Hopkins-health.co.uk





WITH SAM YOU CAN

Ms Samantha Gurney BA (Hons), MA
Qualified Primary School Teacher
with Special Needs Experience

Tutoring for English,
Reading & Maths

Music Theory & Woodwind Lessons.

Telephone 07736 072 982 or email
sgurney71@hotmail.com



Council Corner

Councillor Vacancies

We currently have two vacancies on the Town Council, one on the East and one on the West Ward, and we are seeking to fill these positions by co-option. If you are eighteen or over and live and work in Hayle you may qualify to be a town councillor, which is an entirely voluntary role. If you have a few hours a week to give to your town, please consider getting involved. Having people of different ages and from a variety of backgrounds may lead to more

informed decisions and ensures that the Council better reflects the wider community. The role of the Town Council is ever growing. As a result of devolution, we have more powers and can consider preserving and taking on more services from Cornwall Council. You could be involved in making important decisions which directly benefit the future of your town.

If you'd like to know more then please call the office, details below, for an informal chat with the Clerk or one of the officers but also feel free to contact one of the existing town councillors who could provide information and discuss what's involved from their perspective.

If you are interested, please register your interest, providing a little bit of information about yourself, with the Town Clerk's team via info@hayletowncouncil.net. We will be looking to interview, depending on level of interest, and co-opt prospective new councillors in September.

DSCVR app

Finding out about what is going on in and around Hayle has been made easier through the DSCVR app. You

Mike Thornton

**Plumbing & Heating
Services Breakdown,
Servicing & Repairs to all
makes of boilers**

01736 740965

07704 244 376

mc.thornton8@btinternet.com



JAKE'SMOBILE

PHONE REPAIRS

01736 757233

07873 799 930

can download the app on any android or iPhone device here: If you are a local business and would like to be featured on the app, then get in touch via info@hayletowncouncil.net and we can make sure that potential customers know how and where to find you.

Do let us know about any events that you are hosting so that we can ensure that they are added to the app. Whether you're running a workshop or a concert, Dscvr can reach people based in the town along with anyone thinking about visiting Hayle.

Gorsedh: 1st–4th September 2022

As announced in April at their proclamation event, Gorsedh Kernow has chosen Hayle to host

the Gorsedh Ceremony and Esedhvos from 1st – 4th September. Plans are underway for four days of events that celebrate Cornish culture and the town and community of Hayle.

A full programme of events will be available in the coming weeks on our website and on the Dscvr app. If you run a business or local organisation in Hayle, then do get in touch to find out how you can get involved in the Gorsedh by emailing julie.baldwin@hayletowncouncil.net

Town Team Update/A Vision for Hayle Public Consultation

Would you like to have your say about what happens in Hayle?

Hayle Town Council, on behalf of Hayle Town Team, have requested

Julia Woodhams

MAR: MIGHT: MBRCP

COMPLEMENTARY
THERAPY PRACTITIONER

Aromatherapy, Reflexology,
Reiki Healing, Indian Head
Massage, Hot Stone Massage
and Aromatherapy
Facials with organic
oils.

For appointment or
enquiries

Ph: 07960 181497

01736 603397

Email: roo61@hotmail.co.uk

Gift Vouchers available.



Move that
Body to
Music

Classes for 60s Plus

Classes held in a socially
distanced safe environment

Thursdays at Hayle
Rugby Club at 10.30 am

£5.00 a session

Phone Sylvia on

01736 757560

for more info

quotes from consultants to carry out a public consultation to create a shared vision for Hayle.

The contract is due to be awarded at the end of July with a view to the consultancy starting work on the public consultation at the beginning of August. A report should be published at the end of October. We'll keep you posted about how you can get involved with the consultation and how to be part of the Town Team.

Mayor's Event: Picnic in the Park Sunday 14th August 2022

Hayle's Mayor, Anne-Marie Rance invites you to a picnic in the park on Sunday 14th August to raise funds for St Julia's Hospice. We'll be asking for cake donations to sell in aid of this worthy local charity that supports people and their families at

their time of need. They'll be games for children and adults, so be sure to get your picnic blankets at the ready and come on down to the Recreation Ground. More details are available on our website, social media and DSCVR Hayle.

Hayle Town Council, Hayle Community Centre, 58 Queensway, Hayle TR27 4NX, 01736 755005, www.hayletowncouncil.net
Office hours 9.30am – 12.30pm



Well, the judging for this year's South West in Bloom (SWIB)

Mr. B's
Famously Fresh Ice Cream

The only place you can get a delicious

POP Waffles



OPEN DAILY
Fore Street, Copperhouse
Penpol Terrace, Foundry

📞 [mrbsicecream](https://www.mrbsicecream.co.uk)
🌐 [mr_bs_ice_cream](https://www.mrbsicecream.co.uk)
Tel: 01736 757925

www.mrbsicecream.co.uk



**The Oldest
Chippy in
Hayle!**
Opening hours

Sunday – Monday: Closed
Tuesday: 4.30–8
Wednesday: 12-2 / 4.30–8
Thursday: 12-2 / 4.30–8
Friday: 12-2 / 4.30–8
Saturday: 12-2 / 4.30–8

We have a 5* Hygiene rating

See us on  @Lewy's Fish & Chips

01736 759381

48 Penpol Terr Hayle TR27 4BQ

competition is over and co-chairs, Richard Barber and Nigel Powell, would like to thank all Hayle in Bloom (HIB) volunteers and friends of the bloom for all their hard work and contributions during the long run-up to judging held on 12 July. They would also like to acknowledge all those Hayle residents and businesses who have made the effort to beautify their gardens and/or premises, thus improving the overall feel of Hayle.

Richard, our co-Chair, sent an email last evening expressing some thoughts about the day and which I quote:

“What a fantastic day” “We had an amazing turnout from HIB. volunteers to Bodriggy School pupils to

members of the Town Council, including the new mayor, and so many others”

“We travel to Crewkerne in Somerset for the awards ceremony in October and we’ll find out then if we’ve been re-awarded Gold. It seems a possibility”

“I would like to thank all the volunteers and individual groups that have joined us and ‘adopted a plot’. Without you, our town would not look as beautiful as it does”

“I would like to thank all the businesses that have supported us and especially Paradise Park, who offer continued assistance and have, indeed, hosted the judging day today”

“We hope everyone will enjoy the displays that HIB have created for the community and hope you love Hayle as much as we enjoy keeping it blooming lovely”

At the Paradise Park reception for the judging duo from South West in Bloom they said they had never visited Hayle before and had been very pleasantly surprised at what they had discovered during the morning.

PROPERTY REQUIRED TO RENT

West Cornwall.

Clean Living, middle-aged Gentleman seeks a long-let UNFURNISHED home between Longrock and Camborne or surrounding areas would be great, but not essential.

I need 2 or more bedrooms or 1 bed with decent storage space, or space for large shed for storage.

Parking or garage is essential.

A non-smoking, ex builder, so very handy.

I may be able to offer a little care-taking, maintenance etc.

I will consider anything that is habitable or very nearly

If you have anything in the back of your mind, lets chat.

Text: 077 044 055 49

West.Point@Hotmail.co.uk

Come to

**BLEWETTS
TOY SHOP**

19 Penpol Terrace, Hayle

TR27 4BQ

01736 753012

They said they had been particularly impressed with KGV Memorial Walk; the Penpol Terrace community gardens; the Isis Gardens and the general planting throughout the town. They were looking forward to visiting the Towans in the afternoon! So, the initial feedback from the judges was very encouraging and, in response, Nigel Powell, our co-Chair, gave an entertaining yet considered speech.

Moving on to some specific Thank You's:

Thanks to Keith Harris for updating our achievements boards for the last 2 years and also for painting the Hayle Surf Life Saving on the Memorial Walk

Thanks to the Hayle Pump for their very generous donation of £500.

Mainly, this has been used to help pay for new plants

Town Gardener, Olivia Pellowe, would like to thank each and every one of the volunteers who have so generously given their time and expertise in helping to maintain the KGV Memorial Walk

Thanks go, as always, to Hayle Town Council for their continued support

There are now trolls who guard the bridge near the bouledrome, by the swimming pool and thanks go to their creator, Derek Hogarth

Finally, and sadly, we at the Bloom would like to mark the passing of well-known Hayle resident and Town Councillor, John Bennett. He was a founder member and long-standing friend of Hayle in Bloom. He will be sorely missed.

Sweet William Florist



.....for the personal touch.

07928 100 690
01736 740 644

www.sweetwilliams.com

The Gallery Coffee Bar
 Always welcoming and friendly



You can sit in the fresh air in our lovely sunny courtyard,

or

relax on a comfy sofa with great coffee, home-made cakes, breakfast and light lunches.



1 Chapel Terrace Hayle (by the Viaduct) ...**See you soon**

07765 229 764

Dogs (and well behaved owners) are welcome

The next monthly meeting is on Monday 25th July at Passmore Edwards at 7.00. All are welcome. If you have any questions, ideas or offers of help, then please contact either of our Co-Chairs: Richard (tel. 07485 560253) or Nigel (tel. 07895 601978)

Millpond Update

Midsummer has been and gone and now we are experiencing weather that would suit life in the desert. Climate change is certainly becoming the reality once described over a decade ago by Sir David Attenborough.

Although our swans nested, they did not produce another brood of cygnets. This may be because our original brood was late leaving the

ponds but other sites like Abbotsbury have had a similar experience this spring. All we can do is cross our fingers and hope that next year will see a new brood. The ducks had moved on to their nesting sites but now the unmated drakes and last year's fledglings are beginning to return and are moulting. The "scarecrow" brigade are settling in well again and we have about forty home again.

DIRECT TRANSPORT Removals & Storage

**LOCAL & NATIONWIDE
Full & Part Packing Service**

**Call for a free
competitive quote**

**Tel: 01736 603018
or 07476 223221**

7 days personal service



Webb & Philp Ltd
electrical contractors



18th edition
BS7671

**All aspects of Electrical
work undertaken**

Free Estimates. No Job Too Small.

Prompt. Reliable. Fully Qualified. Est 1972

- ✓ Re-Wires
- ✓ Security
- ✓ Showers
- ✓ New Build
- ✓ Testing
- ✓ Maintenance
- ✓ PAT Testing
- ✓ Extra Sockets & Lights

www.webbandphilp.co.uk

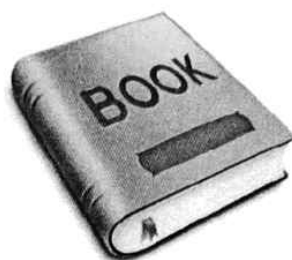
Tel/fax 01736 753651 Mobile: 07419 376882

Email: electricians@webbandphilpltd.co.uk

We have had a lot of blossom on our trees this year, The Laburnum on the peninsular between the ponds was particularly magnificent this year and the rhododendron on Duck Island was also spectacular. The Garden and the Rope Walk are looking good, and it is great to see our visitors enjoying the scenery. Please go on doing so. I do not know whether the Guided Walks have started yet but we hope you will come and enjoy them. By the way, Odin and Solar are also enjoying being thoroughly spoilt and the turtles are sunbathing just like us humans. Goodbye for now.

*Georgina Schofield Volunteer
Wildlife Warden*

Do you want to hear a construction joke? Sorry, I'm still working on it.



Hello from the team at Hayle Library

We are fully open for browsing and have 3 out of our 5 public computers available for use with a 60 minute time limit. You can print from our computers and we have a scanner attached to number 1. We are asking that all of our customers continue to please wear face masks where possible and to sanitise their hands on the way in to keep everyone as safe as possible. We are only a small building and are hoping to continue being open if we are all careful and respect each other.

We have great online resources available to our customers



PLANTECH
GARDEN SERVICES

EST 2006

Lawns & Hedges Cut
Tree & Shrub
Pruning,
Lawn Care
Treatment Services
Gardens Cleared

Free no obligation quotes

Mob: 07979 546434

Tel: 01736 754401

ALEXANDER McDONALD

Gutter clearing and fascia board cleaning. Painting, pressure washing, gardening services. Also Fencing and Fence repairs and all those little jobs you keep putting off. Free estimates.

Big enough to cope, but small enough to care!

Mob 07880 777 591

Home 01736 753102



like Borrowbox where you can borrow e-books and e-audio books, Press reader which has lots of newspapers and magazines to choose from. There is also E-comics available, Medici.tv which has classical music, opera and dance videos and we have a great on-line language site called Transparent language online.

We have a free Home Library service for those that are housebound and unable to get to the library. We have a lovely team of volunteers who can choose books and deliver them safely to you once a month so if this something you could benefit from please do get in contact with us by ringing the contact centre on 03001234111 and ask to be put through to us.

For those of you that are self-

isolating we can also get some books out to you no problem so ring the number above.

We are running our Rhyme-time and Storytime sessions again. Our Rhyme-time session is outside on a Wednesday morning at 11am if the weather is dry so bring something to sit on, a cuddly toy and dress warmly. Our Storytime is outside if the weather is dry and inside if not.

HOSKING
ROOFING

* GRP FLAT ROOFING * TILING
* SLATING * REPAIRS * NEW ROOFS

Tel 01736 758458

Mob 07909 943 098

Bespoke Picture Framing



Paintings,
Photographs
Textiles, Canvas
Cross-stitch, Memorabilia,
Conservation
Mobile Service offered
Tel: 07502 392 839
www.itsallintheframe.co.uk
gilly@itsallintheframe

Gilly Hooper
32 Chenhalls Road,
St Erth
TR27 6HJ.

PAUL SHERRIS

Hayle's only
local family owned
**FUNERAL
DIRECTOR**
Private Chapel of Rest
Pre-Payment Plans
available
West Terrace, Hayle.
TR27 4JS.
01736 753969
Day or night

One week is Arts and crafts and the other Lego. Look on our facebook page for more details.

For the children that have not already signed up there is still time, the Summer Reading Challenge is a free reading initiative that is running from July 9th to September 9th aimed at primary school children. They need to come along to the library to register and pick up their Collectors poster, every 2 books they read they will receive rewards from the library, including a medal at the end (after 6 books) and certificates at the school at the end of September. For every child that completes the challenge we are doing our own special prize drawer with some lovely prizes.

Our current opening times are Monday, Wednesday and Friday

from 9.30-5pm and on a Saturday morning from 9.30-12.30pm

Keep an eye on our facebook page to see what's going on. We will resume other partner drop ins and sessions when we deem it safe to do so.

We hope to see you soon :)



giving
nature
a home

A recent stroll
along the
King George
Walk
alongside

Copperhouse Pool rewarded me with two curlews, and a pair of shelducks shepherding seven young, who did not want to be shepherded and wandered far and wide, to the consternation of their flustered parents. The usual group

www.wesendflowers.co.uk



Send Flower from your
Proper Local Florist
Flowertime @
The Big Pink Tree
01736 757006

WEST CORNWALL MOBILE FOOT CLINIC

For the professional treatment
of:

Corns & Callus Diabetics

Verrucas Athletes Foot

Thickened Nails

Fungal Infections

Ingrowing Toe

Nails

Cut-trim Nails

All in the
comfort of your own home

Peter Williams

S.A.C.Dip FHPT/FHPP

07901 803493

Evening & weekend calls
available.

pwpetewilliams@googlemail.com



of gulls occupied a grassy area, too far away to recognise anything unusual among them. For birds and for humans, the King George Walk is a welcome retreat.

A very young gull, not fluffy, but not able to cope alone, fell from its nest, causing a great furore among the resident gulls in my street.

Fortunately, the youngster was caught before a speeding car bowled him over and is in the care of Mousehole Wild Bird Rescue and Hospital.

When our local gulls fledge, they will be fed and watched over by the parents. Unless injured or in a vulnerable spot, nothing need be done. Wildlife rescues see numerous chicks brought in each season that would have had a much better chance of survival if left in

their parents' care. This applies to lots of our wild birds who might appear lost or in distress when grounded but take a few days for their flight feathers to develop. Keeping pets away from these birds and putting out water for them is usually enough action. If a bird does appear/has been injured, it's best to contact the RSPCA or a local wildlife rescue centre for advice.

The RSPB website always has interesting items to read, it's worth a look! (rspb.org.uk) More than a million people in the UK are members!

Until next time, Tina Morgan

You heard the rumour going around about butter?

Never mind, I shouldn't spread it.

Transformations Cornwall

Give your home a luxurious finish.

Create the style you desire.

*Bespoke curtains, blinds and soft
furnishings.*

Handmade to a high standard.

Professional friendly service.

*Elizabeth Gregg
17 Penpol Road Hayle
TR27 4AD*

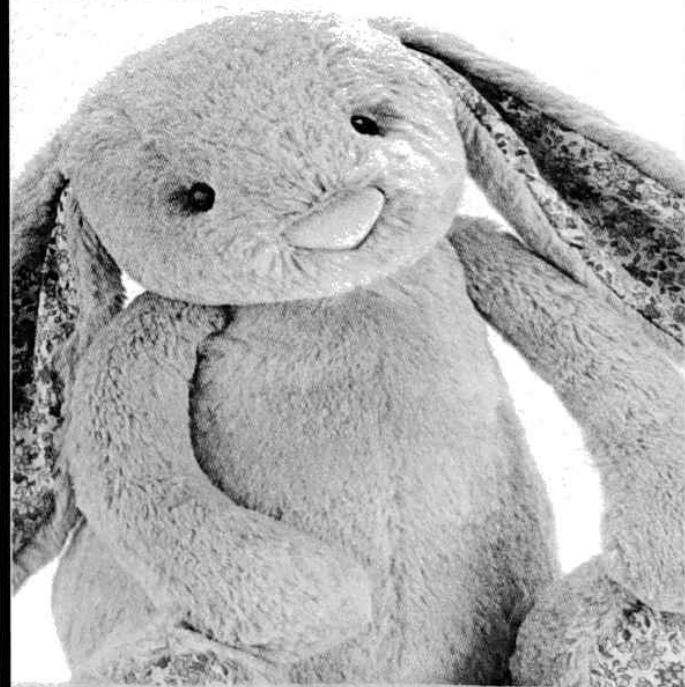
01736 752434

elizabethmgregg@gmail.com

www.facebook.com/

transformationsCornwall

www.thebigpinktree.co.uk



Your Local Gift Shop
on Penpol Terrace
The Big Pink Tree

01736 757006

The Bells of Phillack



The Ladies of Phillack Church organised A Celebratory Flower Festival to Mark the Queen's Platinum Jubilee. And what a weekend it was. I was present a lot of the time, and it was friendly, colourful, entertaining and happy throughout. Visitors came and went throughout the days of the Festival, enjoying some of the entertainments laid on, perusing the many goods for sale, or chatting with friends over a cup of tea and a bite to eat – or Cornish Cream Teas after 2pm. The teapots were kept full and hot with colourful tea cosies, and scones and cakes in plentiful supply at all times.

There were beautiful floral displays throughout the Church, done by obviously talented local ladies. Local art and crafts people had donated paintings, photographs, crafty knick-knacks and glass ornaments to help raise funds, and there was a miscellany of other goods for sale. One of my favourite stalls was a variation on an old theme. Several ladies painstakingly and patiently rolled a raffle ticket and placed it inside a drinking straw. People could purchase a straw, wiggle the contained number out, and then claim a gift with the matching number from the displayed array. It was very popular, and fun, too. I tried for the chocolate, but missed out!

A concert by a ukulele band was very popular, with song sheets provided so we could sing along. A story about the Phillack Church

PROPERTY MAINTENANCE

Painting

Gardening

Fencing/Sheds.

Experienced and reliable

Competitive rates

Contact

Simon Wells

07709 926 595

01736 754408

simonwells1466@gmail.com



We are a Pre-loved Boutique selling an extensive range of quality label clothing, shoes and accessories. Buying and selling on commission is easy and we are on hand to book in your clothes, bags and accessories. Make money on your once cherished garments, it's so easy.

*1 Chapel Terrace Hayle TR27 4AB
(by the viaduct)*

07765 229 764



Mouse Family, well known in these parts, was read aloud to a spellbound audience of young and older. A local choir came to the Songs of Praise, boosting the hymn singing, and presenting some pieces for the congregation's pleasure.

Phillack Tower was open for inspection, and Tower Captain David wasted no opportunity to encourage new ringers. A couple of bells were down so that visitors could chime a bell, and were visibly pleased at their success.

Our team of ringers was not idle. We rang on Friday in sync with St Paul's in London, as they rang for the Queen's Jubilee service. We were intending to ring prior to the Songs of Praise which was the culmination of the weekend's celebrations, but, alas, a shortage of available ringers

reduced our ringing to a single bell chiming for a few minutes. The service that followed, led by Father Malcolm Uren, was a joyful mix of well-known hymns sung loud and clear, and some of Fr Malcolm's relevant but amusing memories.

Phillack might not have had the crowds of London, but it had enthusiasm to match in celebrating the long reign of our Queen. It was a great weekend and raised some funds to help restore the Phillack Church Organ. I was honoured to be part of it, and sincerely thank the Ladies of Phillack.

Blue Plaques of Hayle: The Passmore Edwards Institute

Half way along Hayle Terrace, between Copperhouse and Foundry



PHILPS
FAMOUS PASTIES OF CORNWALL

Order our Famous Cornish Pasties online to be delivered to your door at www.philpspasties.co.uk

Hayle East Quay 01736 755661
Hayle Foundry Hill 01736 753302
Marazion 01736 710332
Praze-an-Beeble 01209 831360



CLIFFORDS
Plumbing & Bathrooms

Need a
Plumber?



From a dripping tap to a
complete bathroom

We have a new phone number

01736 752955

07761938183

cliffords4@btinternet.com

 Cliffords plumbing and bathrooms



Square, stands an imposing and rather austere building, the Passmore Edwards Institute. The name of the donor is engraved into the Cornish granite, and appears on all his buildings. Passmore Edwards used architect Silvanus Travail to design the building, which was to serve as a village hall, a meeting place for the townspeople of Hayle. Indeed, it still serves that purpose today, with the Royal British Legion and Hayle in Bloom among those using it on a regular basis. There was a major restoration in 2011, 100 years after Edwards death, (April 22 1911) and it continues to serve the community to which it was freely given.

The foundation stone for the building was laid on September 23 1893, with a day's holiday declared

by the Town Council. There were festivities throughout the day, and a promenade concert and fireworks in the evening. Before he laid the stone, Passmore Edwards dedicated the Institute to the memory of his father. Three years later, in 1896, Passmore's wife Eleanor officially opened the building. It was to provide education and technical training at a time when Hayle was suffering from a decline in the mining industry.

And who was Passmore Edwards? He was born on March 24 1823 at Blackwater, a true Cornishman. He was a journalist a newspaper owner, and, briefly, an MP. During the Victorian period, the working classes, which included thousands of Cornish miners, farm workers, fishermen and other labourers, often

ALL AERIALS

TV Aerial & Satellite TV Specialists.

digital 

Registered Digital
Installer



25 Years Experience

For all aspects of Tv Aerials,
Satellite Systems Fixed &
Motorised, Installations &
Repairs

Free Friendly Expert Advice By
Local Engineer.

Tel : 01736 759225

Mobile : 07979503907

Email. jonathan@allaerials.co.uk



Greek Food delivery service to
Hayle, St Erth, Connor Downs, Lelant radius
A traditional culinary experience just
like in Greece. Producing luscious
dishes with a respect for
traditional flavours

Craving proper Greek Gyros?
here is the place to find it !

Pork Gyros - Chicken Gyros - Moussaka
Kleftiko - Gemista - Baklava
and many more Greek delicacies !

Find our menu on Facebook/ProperGreek

or give us a call on **07983179990**

 propergreek  @proper_greek

struggled to afford good education and healthcare. Passmore Edwards campaigned for better facilities for poorer people, and when he realised that other politicians were not very interested, he used his own money to provide these facilities. He was truly a champion of the working classes, a generous benefactor over many years.

Passmore Edwards also campaigned for the Public Libraries Act, which would give free access to information and books for everyone. After the Act was passed in 1850, he made large donations to have free libraries built. In Cornwall, he provided free libraries at St Ives, Camborne, Redruth, Falmouth, Truro, Liskeard, Bodmin, and Launceston. Many of them are still in use today, the nearest being at St Ives. He provided a free library in Newton Abbot, Devon, where his mother, maiden name Passmore, was born, and a further 16 libraries in the poorest areas of London. A bust of Passmore Edwards by Sir George Frampton was rescued from the basement of Hoxton Library in London, and unveiled in May 2007 at the

Passmore Edwards Library in St. Ives, Cornwall.

Passmore Edwards provided money for drinking fountains so that working people could get free access to clean water. There is no doubt that this generous Cornishman helped improve the lives of many poor people. His generous gifts are still appreciated today. There is a wealth of information about him and his philanthropy online if you wish to know more about him.

This article is dedicated to John Bennett, who died suddenly in May, and worked tirelessly for our community.



MOUNTAIN - ROAD - BMX SPECIALIST

Bicycle Sales and Repairs

Tel: 01736 753825

36 Penpol Terrace, Hayle TR27 4BQ
www.haylecycles.com

THE Cornish Arms

86 Commercial Road, TR27 4DJ



Open every day serving lunches and evening meals. Fabulous beer garden! FAMILY friendly- friendly dogs welcome. Famous for our ales and Sunday roasts!

Ph 01736 753237



The Cornish Arms Hayle
[@thecornisharmshayle](https://www.instagram.com/thecornisharmshayle)



Georgia's voice would like to invite you to their fortnightly support group, Tuesdays, at Hayle Day Care Centre

(Commercial Rd, Hayle TR27 4DE) from 6.30pm - 8pm.

Our support groups are free for young women, aged between 18-25 years with any kind of mental health concerns. A safe, confidential space for you to talk, listen, or just be. We provide regular well-being activities and can make referrals/signpost to relevant professional services.

No need to book – we hope to see you soon. <https://georgiasvoice.co.uk>

HAYLE FILM CLUB

Due to the sad and unexpected death, in May, of my husband and committee member John Bennett, who managed all our technological needs and film projection, we must again delay the restart of the Hayle Film Club.

If there are any film lovers out there who are knowledgeable about electronics and video projection (we currently screen from Blu-ray discs), please contact me.

Donna Anton, Chair, Hayle Film Club

donna@donna-anton.com

Des Button

Electrical Services & Supplies

Rewiring,

Fitting Consumer Units,

Sockets & Switches

Emergency callouts.
For Free Estimates & Friendly Advice
Call

01736
753211



SHIATSU

Physiotherapy massage

CHRISTIAN THELERMONT

Fellow of the Shiatsu Society UK (FWSS)

25 years practising

Gentle or deep tissue massage

Increases circulation and energy

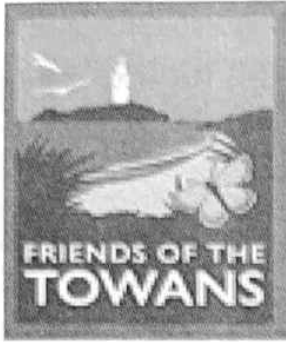
Triggers own body healing and immune system

Aligns body posture

Client stays fully clothed

synergyshiatsu.co.uk

07949 938096



TREES ARE GREAT, BUT.....

In terms of the 'environment, climate crisis and biodiversity decline', it would be easy to think that trees are the solution to all our woes. Don't get me wrong, I love trees and they are amazing, after all they give us food, shelter, shade, materials, oxygen, rest and relaxation, some very special wildlife, they store carbon (as do all plants, by the way) and they are just plain nice to be around. But it's not that simple, as things rarely are!

We might be at risk of over-looking other very important habitats and sites that aren't wooded, and not

valuing them properly. In some cases even, important habitats can get planted with trees in our rush to meet these much-vaunted tree-planting targets.

We have lots of visitors here right now, so can you help me to let them know how uniquely blessed Hayle is to have two nationally important wildlife sites (SSSI) right in and around the town - but neither has anything to do with trees?

Firstly, the mudflats of Hayle Estuary, Carnsew and Copperhouse provide critical food reserves for migrating wading birds. They stop off here on their way between Africa and the Arctic Circle, where they breed. Being so far South West, Hayle is the first and last refuelling stop they can make before heading across the Channel. By the time you receive the

Saints

funeral services

**INDEPENDENT FAMILY
FUNERAL DIRECTORS**



- PRIVATE CHAPEL FOR SERVICES
- RELIGIOUS/NON RELIGIOUS WELCOME
- PRIVATE CHAPELS OF REST
- PRE PAID FUNERAL PLANS

TEL: 01736 447070 (24HRS)
www.saintsfunerals.co.uk

KING GEORGE V
MEMORIAL WALK,
PHILLACK,
HAYLE .



BARNOON
CHAPEL,
CLODGY VIEW,
ST IVES.

Café Riviere

Across Hayle's Jubilee Bridge

**Serving a variety of hot
food, late breakfasts,
drinks, ice-cream, cream
teas and snacks.**

- *Indoor and outdoor seating.*
- *Take-away is available.*
- *Open all year.*
- *Next to the public open-air swim pool, sub-tropical gardens, promenade and nature reserve.*

Pump, the important autumn migration will already be well underway.

Secondly of course, our lovely Towans cloaking the coast from Hayle to Godrevy. The open grassland isn't just a nice place to walk through on your way to the beach, or just a handy place to walk your dog - although it's both those things too - it's also an incredible reservoir of plants. Did you know that one quarter of all the plants found in Cornwall occur here? That's about 25% of the plant species on 0.1% of Kernow's landmass - WOW! Can I encourage you to get out and enjoy these plants - and the insects they attract - now that many are in flower, and to be amazed at this jewel on your doorstep?

Come the late autumn, we'll be starting our practical work sessions

again, cutting back bramble, gorse etc to encourage the grassy areas to expand. If you'd like to help, please do get in touch. We provide tools, gloves and good company and work in a very relaxed manner. Just bring some enthusiasm, stout boots and suitable outdoor clothing.

To see our programme, look at www.friendsofthetowans.org.uk for more details, and to get involved just contact me at martinrule@talktalk.net

*Best wishes from the Towans
Ranger, Martin Rule*

**HAYLE
FRIENDS
GROUP
CHSW**



would like to thank TESCO EASTERN GREEN for their generosity in supplying all the items

**DAVE
THOMSON
DECORATING
INTERIOR &
EXTERIOR.**

FREE QUOTATIONS

**TEL 07518 136 730
01736 754647**

**Dave.thomson2013
@hotmail.co.com**

HEARING
SERVICES CORNWALL
LIFE SOUNDS GREAT



**Local Independent Hearing Aid
Audiologist Richard Bunce
based in Hayle can help you
hear again.**

**Service and repairs to most
makes .**

**FREE HOME VISIT HEARING TESTS
covering Cornwall .**

**Book your appointment on
0787 218 3742
ears11@sky.com**

needed for the Cream Tea held on the 17th June in Hayle. Their donation helped us to raise much need funds to keep Little Harbour working, caring and supporting sick children and their families. The event raised £228.76 in the form of donations and sale of cards. This will help to continue the caring loving work at Little Harbour.

We would also like to thank all who supported the cream tea held at Reawla The money raised at this event will help The Children's Hospice at Little Harbour continue the much-needed care for very sick children and their families.

Little Harbour is Cornwall's Children's Hospice who care for very sick children and their families. All the family can come and receive respite care time to be parents, brothers,

and sisters without the stress of everyday nursing care, the staff at Little Harbour do that. When times get really hard the staff are there to guide the family through and continue support for as many years as the family need.

Your help is greatly appreciated. Thank you. If you would like to learn more about the wonderful work done at Little Harbour, please call 01726 871800 and ask for a virtual tour or speak to a Friends Group.

Mary Trevarthen, Coordinator, Hayle Friends Group CHSW.

Hayle Tennis Club's Open



Day began early with much activity as our coaches welcomed juniors to join in our coaching groups in the morning followed by the adults at midday, with the offer to stay for our Social Mix-in in the afternoon.

The excitement and sheer determination to hit the ball, be the first to complete a task, get the best shot, or even guessing the number of sweets in a jar, or playing jam jar hoopla was in evidence. Cakes and refreshments were on offer, plus pasties from Hampsons of Hayle. Meanwhile, Phil presided over a marquee tent of plants and Sue offered raffle tickets for some very special prizes from local businesses.

Thank you to Tregenna Castle for the Star Prize this year. Also to The White Hart, Salt Kitchen Bar, Lula

**PASSMORE EDWARDS
INSTITUTE**



MEETING ROOMS FOR HIRE

Hayle's Village Hall
has rooms for
meetings & activities
for 2 to 60+ people

For more information;
WWW.HAYLE-PEI.ORG.UK
bookings@hayle-pei.org.uk
Or call: 07895-601978

13-15 Hayle Terrace
Hayle, TR27 4BU
Charity Number 268429

AFTERNOON SOCIAL DANCE

SIMPLE SEQUENCE, BALLROOM AND LATIN.
1.30 PM - 3.45 PM
TEA AND BISCUITS PROVIDED
AT LEEDSTOWN VILLAGE HALL TR27 6FJ.
ALL WELCOME.
FOR MORE DETAILS CONTACT ANDREW ON
07950687392 OR 01209833773.



Shack and Whirlwind Sports for their support.

If you would like to know more about joining us, please contact ian.vidgen@hotmail.co.uk for all coaching enquiries or email us at hayletennisclub@hotmail.com Why not check out our Facebook page too?

Foundry Under Fives Pre-School Open Day and Toy Sale

We are a small and friendly pre-school in Hayle, and we would like to warmly welcome you to our Open Day and Toy Sale on Thursday 11th August from 10am-2pm at Foundry Under Fives, Harbour View, Hayle. Bring your friends and family along- there will be a tombola, face paints, a toy sale, a book sale, homemade cakes plus lots more fun! You are very welcome to bring a picnic and spend some time in the garden whilst

the children play. It's a great opportunity to see the pre-school too- we have places for September available for 2-4-year-olds so please come along for a look around and meet the staff. As a charity we rely heavily on fundraising. We are having a Bags to School collection on 21st of September- if you have a clear out of your clothes over the holiday's we would very much appreciate your donations! They can be dropped off at the pre-school during term-time between 3-4pm Monday to Thursday. For any queries, please call us on 01736 755511.

Aspects Holidays helps inspire a love of reading at Bodriggy Academy

Cornish holiday letting agent Aspects Holidays has donated £1000 to Bodriggy Academy to help with the refurbishment of the school library.



NEW ADULT BEGINNERS BALLROOM AND LATIN DANCE CLASSES

COMMENCE THURSDAY 8TH SEPTEMBER 8-9PM
AT LEEDSTOWN VILLAGE HALL TR27 6FJ
FOR MORE DETAILS CONTACT ANDREW ON
07950687392 OR 01209833773

In the new year, Aspects Holidays received a letter from Max, a Year 6 pupil at Bodrigny Academy. He explained that the school were trying to raise funds to improve their library so that they could create an inspirational and welcoming learning environment for the pupils to enjoy. After speaking with the headteacher, Aspects Holidays agreed to donate £1000, the amount needed for the large woodland-themed wall mural, which was completed by an award-winning artist in May.

When PR and Marketing Executive, Jenna Ali, delivered the news in person to some of the pupils at Bodrigny Academy, to say they were excited was an understatement! Max and his peers were thrilled that reaching out to the community had been such a success, and Aspects

Holidays were delighted to be able to support this fantastic cause.

On completion of the mural, Jenna Ali returned to the school, along with Marketing Assistant Molly Rusden, to see the finished result. Here's what Jenna Ali has to say: "We were blown away by the mural, it's a magical masterpiece that completes the library's enchanting woodland theme. We love that the community has come together to reimagine the room, with so much energy, effort and enthusiasm going into every little detail. It's fantastic that so many people came together to create this inspirational space for pupils for years to come."

What do you get from a pampered cow? Spoiled milk.

Little Plumbing Jobs
*"No job too small
 just gimme me a call"*
07779 157157
Simon Miller

BIZ AND BYTES
07974 647524 01736 755971
 If you require computer assistance, either training or to resolve a problem then give us a call. Visits arranged to suit you.
 Looking after the home user and small business.
**WEBSITES • BROADBAND • TRAINING •
 COMPUTER SUPPLY • TYPING**
 www.bizandbytes.co.uk 
enquiries@bizandbytes.co.uk

Hayle Methodist Church
 10:30-11:30 each
 Sunday, apart from... 
3rd Sunday
What is it? An informal, family-friendly service with modern songs, Bible reading and a chance to ask questions or chat.
Why a different service?
 Traditional services can sometimes seem intimidating. We welcome you, whatever your background, age, beliefs or experience. Come along, make friends and learn about Jesus.
Where is it? Methodist Church Hall
Who can come? Anyone! Activities available for all ages, on the same theme.
When is it? 3rd Sunday of each month at 4-5:15pm. (Except on Easter Sunday)
Who can answer questions?
 Rev'd Ray 01736 752204 / 07806513728
ray.borrett@outlook.com
Will there be cake? Definitely!

Headteacher, Daniel Simons, expressed his appreciation: "We watched in awe as Jordan Lauder at The Mural Company spent a weekend building layers of paint with roller, spray can and air brush to complete the decoration of our school library. The library has been the most incredible community project that began with the generosity of parents and the wider community. We waited five months to secure the help of Jordan because our children deserve the very best and we are so glad we did; we believe our library is as special as one could ever wish to find in a primary school. Thank you to Aspects Holidays for their contribution that made the mural possible but above all, thanks to Jordan whose genius will welcome Bodriggy children into our school library for years to come; just magical!"

As part of their pledge to support the local community, Aspects Holidays was delighted to help with this endeavour; knowing the library will be enjoyed by children for years to come.



David N'jie
PAINTER & DECORATOR

07944 156995 01209 831397

dave.painter@hotmail.co.uk
Trethannas Cottage, Praze-an-Beeble
Camborne TR14 0LH

Established in 1989, Aspects Holidays are a Cornish holiday letting agency offering a fully managed letting service. They have a wide range of properties, including sea-facing apartments, cosy romantic retreats, dog-friendly cottages and large family-friendly houses; there's something for everyone. With offices in Hayle, St Ives, Penzance, Mullion, Falmouth, Mevagissey, Newquay, Wadebridge and Bude, they're never far away if you need them. www.aspects-holidays.co.uk 01736 754242

Why are crabs so bad at sharing?

Because they're all shellfish.

MW Carpentry & Construction

RENOVATIONS, EXTENSIONS & NEW BUILDS

For All Your Carpentry Needs

Tel: 07930 073332 Email: m.w.carpentryservices@mail.com



Rainbow

Fun I am

Tamsin the owner of Rainbow Fun Cornwall. I have a new shop based in

The Old Foundry Chapel. We sell Bath Bombs for all the family; we have perfume inspired, aftershave inspired and fun ones for the kids. Inside the shop you can pick up a gift for a loved one and add your own personal note to make it that extra special.

We are open Monday 1-4 and Saturday 10-2 and have a website www.rainbow-fun.com where customers can order.

I started a new job as a tailor last week. It's been sew-sew.

Rainbow Fun Cornwall

Bath Bombs for all the family

Summer fun!

We are running free family craft sessions at Hayle Heritage Centre this summer. The sessions are for children of all ages and are inspired by our local history collections.

The sessions are running on the 3rd and 24th August from 2-4pm. In the first workshop, we'll be making pop-up cards, using historic photographs from our archive. In the second, you'll have the chance to make your very own horse puppet, inspired by the many remarkable horses that worked the world-famous site of Harvey's




ThurstanHoskin SOLICITORS

YOUR LOCAL SOLICITOR

At Thurstan Hoskin we like to take the stress and worry away from you.

We offer expert legal advice on :

- Property Services & Conveyancing
- Wills, Probate, & Powers of Attorney
- Deputyships, Trusts & Inheritance Tax planning
- Commercial Property & Leases

HAYLE  01736 230 055

33 St Johns St, Hayle, TR27 4LL | Mon-Fri 9am - 5pm

info@thurstanhoskin.co.uk

www.thurstanhoskin.co.uk



Malt Decorations

Interior & Exterior Painting

07795 083 839

www.maltdecorations.com

Hayle & Surrounding area

Foundry during the Industrial Revolution. Suitable for all ages. All materials provided.

We also have a free children's trail of our current exhibition '24 Foundry Square: How can one building shape a town?' We are open on Wednesdays and Fridays (11am-4pm) and Saturdays through the school summer holidays.

We have had some fantastic new archive and object donations this year, including the impressive Hayle Rotary Club Collection and several original J&F Pool catalogues. These can be seen in the Centre in our new "Recent Acquisitions" display.

Follow our social media for up-to-date information the centre and our activities. Search

@hayleheritagecentre on Instagram and Facebook.

Our website is also kept up to date (www.hayleheritagecentre.org.uk) or you can call on 01736 757683.

Hayle Christmas Lights Needs You!



Everyone knows what a difficult two years this has been with all the effects of Covid-19 and now electricity price hikes, inflation etc. Hayle Christmas Lights has been unable to hold full meetings of the group due to Covid, however throughout this period a very small group of volunteers has continued to

BUSH MONKEY GARDEN SERVICES

Keep it simple Keep it local !
Over 25 years experience with that personal touch.

Qualified and fully insured

Lawn care

Planting schemes

Weed & insect control

Tree hedge & shrub pruning

Garden maintenance & design

Decking Patios

Pressure washing Call Anthony for free no obligation quote or advice.

07825 881 078

bushmonkeygardenservices@yahoo.co.uk

ANGOVE

SPORTS

COPPERHOUSE,

HAYLE.

Tel(01736) 752238.

**For all sports equipment,
clothing, footwear
and fishing tackle.**

**Rackets repaired
and restrung.**



work to ensure that the Christmas lights continued to shine in Hayle. Now that we are able to hold full meetings, we intend to restart our monthly meetings in the Hayle Day Care Centre at 7:30pm on the last Thursday of each month starting on Thursday 28th July. This will allow everyone in Hayle to find out what has been happening during this period and to learn about all the developments made. In fact due to the generosity of residents and businesses in Hayle and to this dedication of this small group of volunteers Hayle Christmas Lights is in its strongest position for many years.

On Thursday the 25th August we intend to hold an AGM, again at the Hayle Day Care Centre at 7:30 pm when several members of the

MJA Waste Clearance

Fully licenced & Insured for waste clearance and light haulage service.

House & Garage clearance,
Garden waste clearance,
Holiday home waste collection,
Shop & Site clearance, Trailer
towing.

Also free scrap collection.

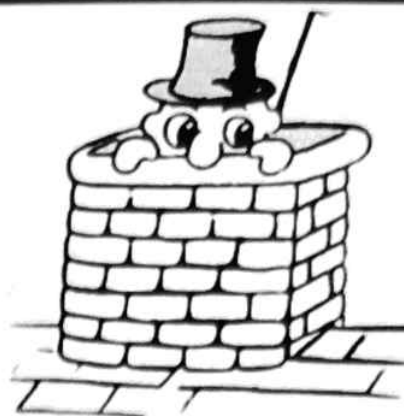
See us on Facebook at

MJA Waste Clearance



mjawcplus@gmail.com

Phone: 07593531363.



LAWRENCE BUTCHER CHIMNEY SWEEP

Traditional and power
sweeping, Solid fuel
servicing and repairs,
certificates issued, CCTV
flue inspections, cowls
fitted, CO alarms fitted,
fully insured

07966 547829

01736 850033

loloubutcher@aol.com



executive committee, who are not getting any younger, intend to step down. Without new people taking on these roles the Hayle Christmas Lights will be unable to continue. So at the AGM it is vital for residents of Hayle to come forward if they wish the Christmas lights to continue to shine bright.

The executive members who are stepping down feel that now is the time for fresher, and possibly younger people, to take on the challenge of keeping the lights bright in Hayle during the Christmas period. Whilst a new team could develop the lights in the ways they feel would best benefit Hayle, the older retiring executive members would continue to give support as and if requested by the new committee.

THE FARM SHOP

31 Penpol Terrace, Hayle,
TR27 4BQ

Open 7 days a week
8am—5pm

**FOR ALL YOUR LOCAL
PRODUCE**

Fruit, vegetables, plants, flowers,
free range eggs, and Cornish
potatoes

NOW IN

**New Cornish Potatoes
New Bunched Carrots
Local Strawberries
Summer Cut Flowers**

Don't let the lights in Hayle go out at Christmas – YOU NEED TO COME FORWARD TO HELP. Learn more at the meeting on the 28th July or phone Patrick on 07787 962001 or email HayleChristmasLights@gmail.com

Hayle Amateur Dramatics Society

The group is now well into rehearsals for its next production "Mother Goose". We are hoping to perform on Friday October 21st and Saturday 22nd at 7.30pm with a matinee on the Saturday at 2.30pm and Friday October 28th and Saturday 29th at 7.30pm with a matinee on the Saturday at 2.30pm. We shall be performing once again, in the Hayle Day Centre.

Tickets will be £4.00 for adults and £3.00 for children under 16 years and concessions. Tickets will be available nearer the time.

Anyone interested in joining us either on stage or backstage will be very welcome. Children aged 7 years and above are welcome to join us but must be accompanied by an adult who of course would also be welcome to join us. We charge £2.00 a week for adults and £1.00 a week for children to help cover the cost of the hall. The first week is free.

For any further information please contact Ken on 07733156530 or email hads.hayle@gmail.com. Or pop into see us on a Monday evening at 7.30pm at the Hayle Day Centre. Parking is free after 6.00pm in the car park.

Ken Townend BEM (Chairman)

Hayle Lions Club

A small but effective group of people who believe in assisting others in need. Now Hayle Lions are in great need, for years they have worked tirelessly to raise funds for good causes not just within the local community but also Internationally. All requests for help large or small are discussed and reviewed at our monthly meetings, alongside fundraising ideas to help increase our finances which enables us to continue helping others. So, Lions in Hayle, like the jungle cats we are proud, work as a pack and are



always on the prowl for new members.

Are you a person that cares about your local community and prepared to give a few hours to a good cause? Then please consider attending one of our meetings - ask questions - see what we are all about. We meet the second Tuesday of the month 7:30pm at Passmore Edwards Institute, Hayle. Drop in have a chat, a cuppa, and a biscuit, we don't bite! □

To help with our funds we rent out a spacious marquee from £250 - contact for details.

Terry 07974 757890 or Dave 0776 6662908

JC ELECTRICAL

Your complete 24 hour Electrical Service

**Rewires • New Build • Lighting •
Showers • Extra Sockets • Heating**

City & Guilds Qualified (Tests to BS7671)

Part P registered

Prompt and reliable friendly service

Free estimates and all work guaranteed

Office: 01736 754543

Mobile: 07739 577549



Table Tennis

The Table Tennis that used to be held in the Methodist Church Hayle, pre Covid, has now been moved to the Village Hall, Leedstown.

It is held every Friday between 2pm and 5pm.

For further information please call Robert on 01736 753591

Captain Paddy Needs a Crewmate!



Meet Paddy, the gorgeous 11 year old Cockapoo who has been a bit down on his luck. Paddy has been at the National Animal Welfare Trust, Cornwall on and off for the past

year, waiting to find his forever home.

Paddy came into the NAWT Cornwall Centre around a year ago at the age of 10 due to an unforeseen change in circumstances. After assessing Paddy and watching his interactions with people and other dogs it

became apparent that he struggles with handling and guarding issues. Paddy guards his food, toys, his personal space and the people who he trusts the most. This little boy has such a heart of gold, he simply wants his owner all to himself!

Things have looked up for Paddy on a few occasions now, but unfortunately each time he has been rehomed he has ended up back in kennels due to his struggles.... We think it really is time that Paddy found the loving home he deserves!

Here are a few words from Paddy about what he is looking for!

'Hi, i'm Paddy... but you can call me Captain Paddy Four Paws! I am currently looking for a new family who have some experience or an understanding of resource guarding and who are willing to get on board with the positive reward based training I am doing to help me with this. I am 10 years old now so this is not something I will ever stop doing, but my ideal new family would work with the staff at the kennels in learning how to manage and work with my guarding. My resource guarding means I can get quite



THE COPPERHOUSE CLINIC

5 Market Square, Hayle, Cornwall. TR27 4EA

01736 757524

www.thecopperhouseclinic.co.uk



GAIT ANALYSIS
LOWER LIMB BIOMECHANICS
LAB MADE PRESCRIPTION
ORTHOTICS
HCPC REGISTERED

CHIROPRACTIC
GCC REGISTERED

CHIROPODY & PODIATRY
LASER TREATMENTS
HCPC REGISTERED

possessive over things like my food, toys, and some objects that I pick up during my wanders. It becomes more apparent when I am in a home environment. Due to this I am unable to live with other pets or small children.... Really I just want you all to myself! The staff at the Centre say that I am such a star! I have lots of energy and don't act my age at all! I love to play and have fun, and I love enrichment activities too (they tend to keep my mischievous streak at bay) ... and I'm quite good at swimming too! (if my new owners lived near a beach that would be just amazing!) Apparently I am super intelligent, and I can rock a bowtie like no-one else! (beauty and brains!) My gorgeous coat does require regular trips to the groomers, but they must be experienced due to my worries regarding handling. I would just love it

if someone would put the time and effort in to working with me as I will love my new owner like no-one else.... Will you give me the chance I deserve?'

The team at NAWT Cornwall simply adore Paddy, he is charming, friendly and such a character! He just needs to find the right owners who are willing to put in the effort with him and work with his day to day struggles. This little guy really is worth every second of the work you put into him, he is such a special dog and whoever his new family may be in the future will be incredibly lucky to have a boy like him. Paddy's new owners would ideally live within driving distance of the Hayle Centre as the adoption process would involve ongoing regular training sessions pre and post adoption.

Mr. B's

Famously Fresh Ice Cream

- Coffee & other hot drinks
- Traditional ice cream desserts
- Healthy salads
- Fudge - Buy 3 bars and get a 4th one free!!

Eat in or take away
(subject to Covid restrictions)

OPEN DAILY

Fore Street, Copperhouse
Penpol Terrace, Foundry

† mrbsicecream

● mr_bs_ice_cream

Tel: 01736 757925



www.mrbsicecream.co.uk



Specialist Building Surveyors

Asbestos Surveys
Buildings Surveys
Damp Diagnosis
Fire Risk Assessments
Timber Decay
Mundic Testing

Craig J Shepherd

BSc(hons) Building Surveying, CSRT

01736 752012

07890 528 312

info@cjshepherd.com

www.cjshepherd.com

If you have experience or a good understanding of resource guarding and think Paddy is the one for you, click the link below to complete a questionnaire and register your interest in the handsome Captain Paddy Four Paws! <https://forms.gle/Sd4zNHRQFEzb7BPS9>

Sunday
28 August
Cream
Teas and
family
friendly
treasure
hunt



around the village from 1pm to 4pm.

ST ERTH CHURCH CREAM TEAS & TREASURE HUNT

In aid of the new church lights.

Both events take place at St Erth Church Hall (Old School).

Cream Teas 2pm to 4pm.

Wednesday 17 August.

ST ERTH CHRISTMAS LIGHTS COMMITTEE

The "St. Erth Vintage Bicycle Ride" will be held on the afternoon of Saturday the 10 of September 2022 from 13:30.

A thoroughly jolly good day is to be had by one and all with a leisurely 4 ½ mile ride, taking in the pleasant surroundings of St. Erth Village and

**WEST
CORNWALL
plastics**



- QUALITY SERVICE
- QUALITY INSTALLATION
- QUALITY PRODUCTS

We are delighted to announce our recent award of the Which Trusted Trader Scheme. We have been inspected by Which magazine and Ultraframe, the leading manufacturer of conservatory roof solutions, and passed with flying colours.

As well as carrying a wide range of PVC building products in our warehouse, our installation teams carry out work to the highest standard, giving you the peace of mind that comes with using a Which Trusted Trader.

I would like to thank the readers of Hayle Pump magazine for their continued support, as we serve the people of Hayle and beyond with the best PVC and Aluminum building products

Thank you
Nick and the WCPL team

INFO@WCPL.CO.UK
01736 759444
@WestCornwallPlastics



*West*COAT

CERTASS

the River bank, after which we will make our way towards Hayle with a short stop at the "Bird in Hand" Inn to wet the whistle.

From the "Bird in Hand" we route through Hayle via the historically industrious Foundry Hill and Lane, returning to St. Erth via the Causeway cycle path and Water Lane.

The event Route map route can be found here: <http://goo.gl/maps/Cthvl>

We strongly encourage the use of vintage attire and bicycles for all riders of all ages (although this is not compulsory) and after the event we will be awarding the prestigious "Golden Pedals" trophies (kindly created by our sponsors) for the following classes:

- Best Gentleman

Cabinetmakers & Joiners
JOHN ANDREWS

**Windows, Doors & Staircases
constructed in soft wood and
hardwood.**

**Entrance gates
Fitted Furniture.**

**Restoration & repair work
including Boxframe windows.
Sash cords. Free estimates .**

email:
johnandrews123@btinternet.com
www.johnandrewsjoinery.co.uk
Mob 07765 341616
tel 01736 755423

- Best Lady
- Best Junior
- Best Custom Bike

Event registration (signing of our boring legal "mumbo jumbo" waiver) for all participants will be held at The Old School Rooms (next to Church), St. Erth from 13:30, the entrance fee is £4 per adult rider and £2 per child.

The "St. Erth Vintage Bicycle Ride" will be commencing at approx. 15:00 (hopefully earlier pending completion of registration) with all riders returning to The Old School Rooms at approx. 17:00, shortly after we will be class judging and the awarding of the prestigious "Golden Pedals Trophies".

Please note, those participating with young children are recommended to only ride the shorter 1/2 loop from The Old School Rooms to Green Lane then onto the River bank and back to the Old School Rooms, the ride is approx. 30 mins and without incline although parents / guardians must exercise extreme caution whilst riding along the river bank to avoid any unplanned watery interactions, the main group will then proceed to Hayle and should be returning between approx 1 1/2 Hrs later around 17:00.

At The Old School Rooms we will host a Bar with home cooked food from approx. 17:00 and live music, so a great opportunity to admire the selection of vintage Bicycles and attire whilst wetting the whistle and swapping stories of the days heroic endurance ride.

If the weather is forecast to be rather inclement, then the ride will be cancelled so please check back or call on the day.

For more details message us on facebook.

All proceeds raised through the event will be used for restoration and running of the St. Erth Christmas Lights with the grand turn on taking place for all this December.

***I got a new job last week
as the new top dog at Old
MacDonald's farm.***

FREE CLASSES, COFFEE AND CAKE



Hayle Link into Learning is moving!

Starting in September, we will be offering classes on Mondays at the Philip Smith Annexe of the Hayle Day Care Centre (next to the library).

Would you like a FREE maths or English qualification?

Do you want to improve your job prospects, get back into studying, or just do something for yourself?

Come along to our coffee morning on September 12th from 10am and we



**HYDRO BATH BLOW DRY
BRUSHING NAIL CARE
EAR/EYE CARE FLEA TREATMENT
DEODORIZE CLIPPING.**

ALL NATURAL PRODUCTS.

PH 07903 042950

Lesley 01736 850971

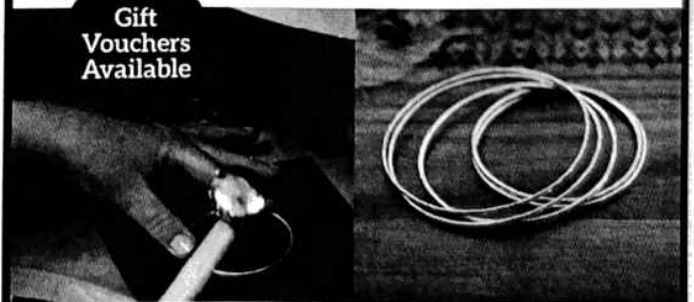
E-mail lesleyandkeith@msn.com

City of Guilds Trained

Brett & Leni
HANDCRAFTED JEWELLERY

**Make your own perfect gift at our
jewellery making workshops**

**Gift
Vouchers
Available**



We offer one-to-one, parent and child or small group bookings. All materials and tools provided. Covid-19 safety measures in place.

To book your workshop session contact us:

Tel: 0757 077 4332 E: sales@brettandleni.com

Shop online: www.brettandleni.com

Unit 6, West Stables, Foundry Lane, Hayle

can have a chat about what we can offer you!

Alternatively, feel free to contact our tutor, Si Parris via email:

si.parris@cornwall-acl.ac.uk

Or via text on: 07483 351361

—

I saw a movie about how ships are put together. It was riveting.

—

What does Charles Dickens keep in his spice rack?

The best of thymes, the worst of thymes.

Déjà vu

I was browsing through an old copy of the Pump (as you do) and came

across this poem by "Yorkie" in issue no. 65 (Oct/Nov 2005), so not a lot of change is there? S. Turk.

*Jack and Jill went up the hill, but not for a pan of water
They went to buy a present for their eldest daughter
The only trouble was they couldn't afford the price
So they trudged back down the hill with scarcely a word spoken
Disappointed, their only option was to buy a gift token.
That's the trouble these days, not enough in one's purse
And the signs are things won't get any better, and could get much worse.*

CORNISH CHARITY APPEALS FOR VOLUNTEER AMBASSADORS ACROSS CORNWALL.

Citizens Advice Cornwall is appealing for people to come forward as volunteers to not only help with providing advice and support, but to also help with fundraising and raising awareness.

Like many charities, Citizens Advice Cornwall relies heavily on volunteers to be able to continue its work. As the cost of living and energy crisis deepens, the demand for the charities services across the county is increasing.

Fundraising Ambassadors are needed for a variety of roles including organising and attending fundraising events, talking to groups



The Mad Hatter

Bed and Breakfast Open all Year !
Rooms overlooking Copperhouse Pool.

Full English breakfast.

Competitive rates.

Relax with a Scrumptious Cream Tea or Homemade Cake in the Café or Tea garden.

Open 10am-4pm
Monday to Sunday.
Closed Tuesdays.

73 Fore St Hayle TR27 4DX
01736 754241 07871 165 381

www.cornwall-online.co.uk/madhatter

paulinemadhatterbandb@outlook.com

Dogs welcome

and organisations, organising collection tins etc. Opportunities are also available for volunteer advisors and administrators.

Citizens Advice Cornwall provides free, independent and confidential advice on a wide range of subjects for everyone in the community, including benefits, debt, housing, relationship issues, employment and redundancy, consumer, legal issues and more.

To find out more about fundraising please email tamsin@citizensadvicecornwall.org.uk
To apply to become a volunteer please email recruitment@citizensadvicecornwall.org.uk

Quay Questions

It would be something of an understatement to say that the development of North Quay was controversial from the outset. This hugely ambitious project has now been actively progressing for over two years but the controversy has, if anything, intensified. Even to talk of "active" progress is somewhat misleading. At the time of The Pump going to press no significant activity has been observed on the site for several weeks. Social media was rife with speculation on the reasons for this; speculation which may or may not have been true. There was also a

YOUR OLD TAPES ONTO CD



**YOUR OLD CASSETTE, REEL TO REEL TAPES OR
33/45/78 RPM RECORDS ALL
SAFELY TRANSFERRED ONTO CD**

Your precious memories saved forever. Your own photos, information & dedications can be included on the CD/DVD cover.

Also now: old VHS video tapes & photos all onto DVD.

Digital Recording for Singers & Musicians, Songwriters, Poets, Story Tellers, etc.

Also Musical Backing Tracks provided.

**Contact Steve Nunn. 01209 719 481
www.cornmillstudio.co.uk
Email: cornmillstudio@aol.com**



HAYLE DAY CARE CENTRE Commercial Road, Hayle

An affordable day care facility for the elderly of Hayle, St Ives and district

Transport • Freshly cooked meals

Also includes bathing and hairdressing
Therapy and lively social interaction

Always a friendly welcome

Call 01736 755000

flood of anecdotal messaging claiming that sub- contractors were facing financial ruin as work came to a halt. How much credence can be given to any of this is anyone's guess. What is beyond dispute is the truism that when an information vacuum is created rumour and speculation will fill it. In an attempt to find out what is really going-or not going –on I contacted the developers, Corinthian Homes, in the hope of an update. No reply was forthcoming. As a second line of approach I asked several Cornwall Councillors for their assessment of current progress. It seemed a reasonable request in view of the fact

that the Council had approved (albeit with several last minute downward revisions) the original planning application. Apart from a few dissenting voices, most councillors were enthusiastic backers of this multi million pound development-the biggest in Cornwall at the time-and there was heady talk of “regenerating” Hayle. Of course the term implies a reawakening from some past Golden Age which in Hayle's case might have been in the Eighteenth Century but be that as it may.

Initially it looked as if the optimism of the Council was justified. The

**Dreckley's Waste
Collection
House Clearance &
Deliveries**

No job too small

**Garages, Houses, Sheds, &
Gardens cleared.**

**Fully registered & insured.
Honest reliable friendly
service.**

**Call Suzanne on 07877 325404
Email: dellamuro@btinternet.com**



**Confidence to Care for all your
Legal Needs!**

We offer advice on the following:
Business & Employment, Conveyancing &
Property Matters, (including Commercial),
Family & Children, Civil Litigation &
Personal Injury, Wills and Inheritance Tax,
Lasting Powers of Attorney, Probate &
Estate Administration, Elderly Client and
Care Home Fees.

**We have offices in HAYLE,
PENZANCE and ST IVES**

**We can also undertake home
appointments in Hayle by arrangement.
Please call us to make an appointment on:**

**01736 362362 or
email: enquiries@cvc-solicitors.co.uk
or see our website:
www.cvc-solicitors.co.uk**

preparatory Infrastructure work went ahead smoothly although it should be pointed out that E.U. funding was available for that: a luxury Brexit has now denied us. The site was next buzzing with heavy duty construction machinery, mighty cranes and a swarm of builders and craftsmen beginning to turn plans into reality. It was hard even for the sceptics not to be caught up in the excitement. There were improvements to the harbour and new facilities for the fishermen. Corinthian Homes were actually changing the face of North Quay. From De Savery onwards there had been many years of endless and fruitless talk about development but

now it was actually happening. The split level waterside homes were built and sold: some at approaching a million pounds. What could possibly go wrong?

The doubters resurfaced and drew our attention to some apparent anomalies. Why were the new homes being powered by generators and not hooked up to the Grid? Why was precious sand being trucked away and sold in alleged breach of planning commitments? Why was a domestic property converted to commercial use without, it was claimed, any change of use permission? Would Cornwall Council need to issue enforcement notices if there was proven law breaking? The recent events at Carbis Bay tell us that the law can eventually catch up with those who chose to disregard it. These were the questions I hoped the Cornwall Councillors I approached might be able to clarify; but answer came there none. I was puzzled at this apparent discourtesy but on mature reflection I believe I know why no reply was forthcoming. They had nothing to tell me because they too have no idea what is going on! Hayle Councillors-to their credit- explained to me that the developers do not communicate. An invitation to Corinthian Homes to attend a monthly council meeting to report progress



TP Wills & Probate.
Wills and Estate Planning Consultant.

**"Where there is a will there
is a way to protect your family"**

- * WILLS * TRUSTS**
- * ADVICE FOR SENIOR CITIZENS**
- * POWER OF ATTORNEY**
- * PROBATE ADVICE**
- * CARE FEE PROTECTION**

Call Tim Poole
01736 758418 or
07900 323939



has not been taken up for several months. When there was an earlier significant stoppage on the site several months ago they did then explain it was due to "re-financing." It may well be that the current stoppage is of a similar nature but in the absence of information we can only speculate on why the cranes are idle. One councillor made a telling point to me. This project is financed by private capital; one of its virtues in the eyes of a local politician.

Understandably the driving force behind North Quay is profit. This is not an expenditure of public money designed to provide affordable housing or new civic facilities. Maybe

then, Corinthian Homes do not feel the need to explain to the general public what they are about. They perhaps think, and they could be excused for doing so, that it has nothing to do with us. However, one might suggest that this massive transformation of North Quay will have a significant environmental and socio-economic impact on those of us who live in Hayle and for that reason alone a little transparency would be more than welcome. D.Jones

There is an advertisement on p.16 issue 5 of the Currnows Hayle magazine setting out a statement from Corinthian.

TJ'S CARPETS LTD.



**New Showroom at Tolroy Garage,
58 Mellanear Road, Hayle TR27 6HF**

Come and see our wide selection of carpets & vinyls,
laminates and patterns

Our famous home selection service still available

Full range of flooring accessories

Call Now! 01736 757540 or 07976 608215

Free measuring & estimate service

"Before You Buy, Give Us A Try"

Hidden Words Quiz

163 Cats

This has been submitted by A Nony Mouse. Many thanks.

1. Was Amber expecting the parcel today?.
2. All eyes were on the clock as midnight neared..
3. Elmo - use red paint for the front door..
4. Is Liam anxious about the interview?
5. Making piccalli? Onions, cucumbers and beans is a good start...
6. Jeepers Ian! You made me jump.
7. Apologies Leo, pardon my ignorance.
8. Look out Bob—catch the kite string!
9. Panic? —I've too much to do.
10. Colin is off to market with the sheep.
11. Is Steven in a gang or a loner?..
12. Mashed potatoes? Use that large pan there.
13. Only three items left on the shopping list—lychee, tahini. And tamarind..

To win a prize of £20 please send your answers by **13th September**

2022 along with your contact details to editor@haylepump.org.uk or use any of our drop-off points on page 2.

Answers to 162 Trees

- 1 Ash 2.Beech 3 Holly . 4.Maple
5 Oak 6.Poplar 7 Aspen 8 Rowan
9 Willow 10 Larch 11 Cedar
12.Elm 13.Pine 14.Lime

The winner, drawn at random was:

Mrs B Stevens of Connor Downs

You are very welcome to send in a quiz on any theme of your choice



Club Listings

Bridge Club Every Mon. Carbis Bay Memorial Hall 2-5 pm £2 inc. tea & biscuits. Enq: Graham 01736 762512

Cornish Crochet Corner first Friday of each month 2pm-4pm at Cornish Arms No experience required. 01736 753237

Cornwall Scale Modellers 2nd Wed each month Hayle Day Care Centre 7-10pm friendly club, talks & display current models, tea, coffee, biks £2.30

Hayle in Bloom. Last Mon. of the month, (not Aug & Dec) Passmore Edwards Institute 7pm.

www.hayleinbloom.org.uk

Hayle Breezers Group Thursdays. 1.30pm Passmore Edwards Inst. April Hogarth 0781 376 7071, Bob Scales 01736 751735

Hayle Art Society Passmore Edwards Institute on Tues 1.30-3.30 & Wed 7.00-9.00 tel.

Chris 01736 757720 or Penny 01736 756445

Hayle Christmas Lights last Thurs of every month (except Dec,) 7pm at Hayle Day Care Centre Annexe New volunteers are always welcome.

haylechristmaslights@gmail.com

Hayle Amateur Dramatics Society

Meet in Hayle Day Centre Monday evenings from 7.30 to 9.30pm. Call Ken on 07733 156530

Hayle & District Bowling Club.

1.00pm every Wed Short Mat bowling indoors in winter 07766 662 908

Hayle Film Club. Films shown at 7.30 p.m. at Passmore Edwards Institute. Donna 01736 753184.

www.haylefilmclub.org.uk

Hayle Friends Group for CHSW

Hospice meets informally once a month under the chairmanship of Mary Trevarthen 01736754342

trevarthenmv@uwvclub.net

Hayle Harbour Users Association

1st Mon, of each month, 7.30pm.

Royal Standard Pub

R Lello 01736 757632

Hayle Judo Kwai Unit 7 Rospeath Industrial Estate, Crowlas. Tues & Thurs. Sensei Richard 01736 740723 or Karen Deacon 0779 209 9979

Hayle Library Reading Group. 2.pm first Wed. of each month .

Hayle & District Lions Club. 2nd Tuesday of every month, 7.30pm at Passmore Edwards Inst. Secretary Yvonne Watson 01736 741375

yvonnemystique@hotmail.com

Hayle Lawn Tennis All ages and abilities welcome. Tremeadow Terrace, Hayle 01736 850843

www.haylelawntennisclub.co.uk

Hayle Local Vocalz

Mondays 7.30pm, Hayle Methodist Church pluing@tiscali.co.uk 754225

Hayle Memory Café 1st & 3rd Mondays 2-4pm at Hayle Rugby Club Christine 07513 221066

Hayle Model Boat Club. Weds. 7-9pm & Sunday mornings 10-12 noon, meeting at green chalet by Hayle swimming pool. 01736 755516, or Les on 01736 754254

Hayle Meanderers Every

Wed. 10.30am Commercial Road car park. Free, + contribution to carshare. Eddie Downing 01736 364673

Hayle Old Cornwall Society. First Friday of each month. Oct, to May at Hayle Day Care Centre 7.30p.m.

Trevor Smitheram 01736 756793

Hayle Nutty Knitters Thursday 1pm at Cornish Arms 01736 762418

Hayle Penwith U3A at Hayle Day Care Centre, Chair Mike Stuckey 01736 697771 u3asites.org.uk/hayle/home

Hayle Pilot Gig Rowing Club.

Rowing out of Hayle Harbour most Tuesdays and Thursday evenings chair@haylegigclub.co.uk

Hayle Railway Modelling Club Club

Room. Unit 5, Praze Business Park.
Praze-an-Beeble. Mon & Thurs 7pm
Martin Scance 0797 7550051
www.haylerail.co.uk

Hayle RNLI meets from March to
November at 7.00pm the 2nd Wed. of
the month at Unit 5 Hayle Industrial
Park. Tel 01736 753567

Hayle Surf Life Saving Club Riviere
Towans Hayle TR27 5AF Captain:
Dave Parker 01736 755303

Heyl St Piran Singers Every
Wednesday at St Erth Old School
Room 7.00pm to 9.00 pm; Tel Carol
Renton 01736 753496 or Ann Thomson
07766128889

Hayle Twinning Association
Communicating on zoom during the
Covid crisis. Contact George Daniel
01736 333236 or email
penelope.young@btinternet.com

Heyl Town Band Rehearsals Tues &
Thurs 7:30pm-9:30pm, Juniors on
Thursdays 6:pm-7:00pm

Macmillan Cancer Support
Meet at Three Trees, 16 Penmare
Terrace, Hayle on most Thursdays at
7.30pm Suzanne Benney 01736
753635

One & All Choir (mixed) Tuesdays
2.30pm to 4.30pm at St. Erth Old
School Room. £2 a session Contact
Ann Thomson 07766 128889

**Penwith Guild of Weavers Spinners
& Dyers** 3rd Sun of mth (not March)
1-5pm Passmore Edwards Institute
01736 762418

Phillack Tower Bellringing every
Tuesday at 7.30pm - Tina Morgan
01736 756567

Phoenix Singers Tues 7.30—9.30
Hayle Day Care Centre Mrs T Cook
797708

Royal British Legion Passmore
Edwards Institute. Every Mon. Wed. &
Friday evening and Sat. afternoon.
Mr Alan Conquest 07470 308400

Save Our Sand For date and venue

of meeting, sos-hayle.org.uk, or
Facebook. To go on our mailing list
contact saveoursand@talktalk.net

Scrabble Club at Connor Downs 2nd
Thurs each month at W.I.Hall. 2-4pm £2
for hall & refreshments .

carolinewindsor123@btinternet.com

**Shore Surf Ladies Only & Juniors
Surf Club** All abilities welcome.
Every Saturday 9 – 11am. 01736
755556 Beachline 07855 755556
info@shoresurf.com

St Erth Concert Band Rehearsals
Tues.7.30 to 9.30pm in Methodist Ch.
Hall enquiries 0739 4617127

St Ives Camera Club Monday 7.30pm
at St Anta Church Hall, Carbis Bay
stivescameraclub.co.uk

St Ives and Hayle Community Choir
Tuesdays 1.30pm to 3.00pm at St Anta
Church Hall, Carbis Bay 07446 492266

Table Tennis for Fun every Friday
2pm - 5pm Leedstown Village Hall. Info:
Robert 01736 753951

West Cornwall Concert Band
Monday 7-9pm at Camborne Wesley
Church – email Becky Lovegrove at
westcornwallconcertband@gmail.com

W.I. Hayle 1st Tuesday of the month,
7.00 pm in Esme Jelbert Room at
Passmore Edwards Institute
Margaret Stockton 01736 756007

Phillack Church Hall bookings,
Tel:Tracey Worrall 07490 691120

To appear on this page free, see page 2.

- | | | |
|-------------------------|----------------------------------|-------------------------|
| 2 1st Choice Paving | 28 Farm Shop | 14 Property Maintenance |
| 10 A. McDonald | 12 Flowertime | 19 Saints Funeral |
| 16 All Aerials | 8 Gallery Cafe | 3 Sam Tuition |
| 26 Angove Sports | 17 Hayle Cycles | 18 Shiatsu |
| 11 Bespoke Framing | 36 Hayle Day Care | 8 Sweet Williams |
| 13 Big Pink Tree | 20 Hearing Services | 5 Sylvia's Exercise |
| 23 Biz and Bytes | 4 Jake's Mobile | 11 T. Hosking Roofing |
| 7 Blewetts | 29 J C Electrical | 25 Thurstan Hoskin |
| 34 Brett & Leni | 33 John Andrews | 39 T J Carpets |
| 26 Bush Monkey | 5 Julia Woodhams | 38 T P Wills |
| 19 Cafe Riviere | 3 Kim Hopkins | 13 Transformations |
| 14 Castaways | 6 Lewy's Fish & Chips | 9 Webb & Philp |
| 27 Chimney Sweep | 23 Little Plumbing Jobs | 32 W. Cornwall Plastics |
| 31 CJS (Craig Shepherd) | 35 Mad Hatter | 43 Winns Funeral |
| 15 Cliffords Plumbing | 25 Malt Decorators | |
| 30 Copperhouse Clinic | 27 MJ Waste | |
| 17 Cornish Arms | 12 Mobile Foot Clinic | |
| 36 Cornmill Studio | 4 Mike Thornton | |
| 37 CVC Solicitors | 24 M W Carpentry | |
| 34 Dapper Dogs | 31-6 Mr B's | |
| 20 Dave Thomson | 21 Passmore Edwards | |
| 24 David N'jie | 11 Paul Sherris | |
| 18 Des Button | 10 Plantech | |
| 9 Direct Transport | 14 Philps pasties | |
| 37 Drecklys | 16 Proper Greek | |

Pick up points in bold.
Copperhouse PostOffice.
Warrens at Foundry,
McColls, Hampsons, Old
Foundry Chapel,
Spar, Farm Shop
Lewy's Fish and Chips



W J WINN FUNERAL DIRECTORS



We are here to help you 24 hours a day

- Funeral Pre-Payment Plans
- Memorials
- Private Chapels of Rest

WJ WINN

Trenwith Terrace
 St Ives TR26 1QE

Tel: 01736 793029

WJ WINN

69 Fore Street
 Hayle TR27 4DX

Tel: 01736 752124

CHARLES BRYANT & MARAZION FUNERAL SERVICE
 North Road, Goldsithney, Cornwall TR20 9JY

Tel: 01736 710318



Part of Dignity plc. A British Company





CHARITY FUN DAY!

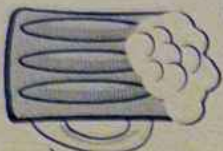
21st August

2022 11-5pm at Hayle

Recreation ground



LIVE MUSIC



in support of



Cornwall Hospice Care

• Mount Edgourne Hospice • St Julia's Hospice
Caring for our community



DOG SHOW

Penalty

Shoot Out

Fundraising for
MACMILLAN
CANCER SUPPORT

FAMILY FUN SPORTS DAY

SUNDAY 21st AUGUST 10.30AM

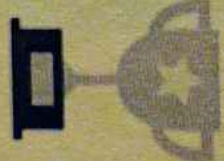
ALL ENTRIES IN ADVANCE
SPECTATORS WELCOME

FUN & GAMES FOR EVERYONE

- Egg and spoon race
- 3 legged race
- Sack race
- Skipping race
- Golf slalom
- And more!



- Fantastic prizes
- Stalls
- Tombola
- BBQ
- Hot and cold drinks
- Cake



Enter your team in advance - £20 per team
Minimum 4 people per team

PARC UPTON FARM, TREEVE LANE, HAYLE TR27 5BN

FOR FURTHER DETAILS Georgia - 07811 339366
AND ENTRIES CONTACT: Vicky - 07815 772029 / vctronin80@gmail.com

facebook.com/teamlimpalong

justgiving.com: Search 'Limp along'