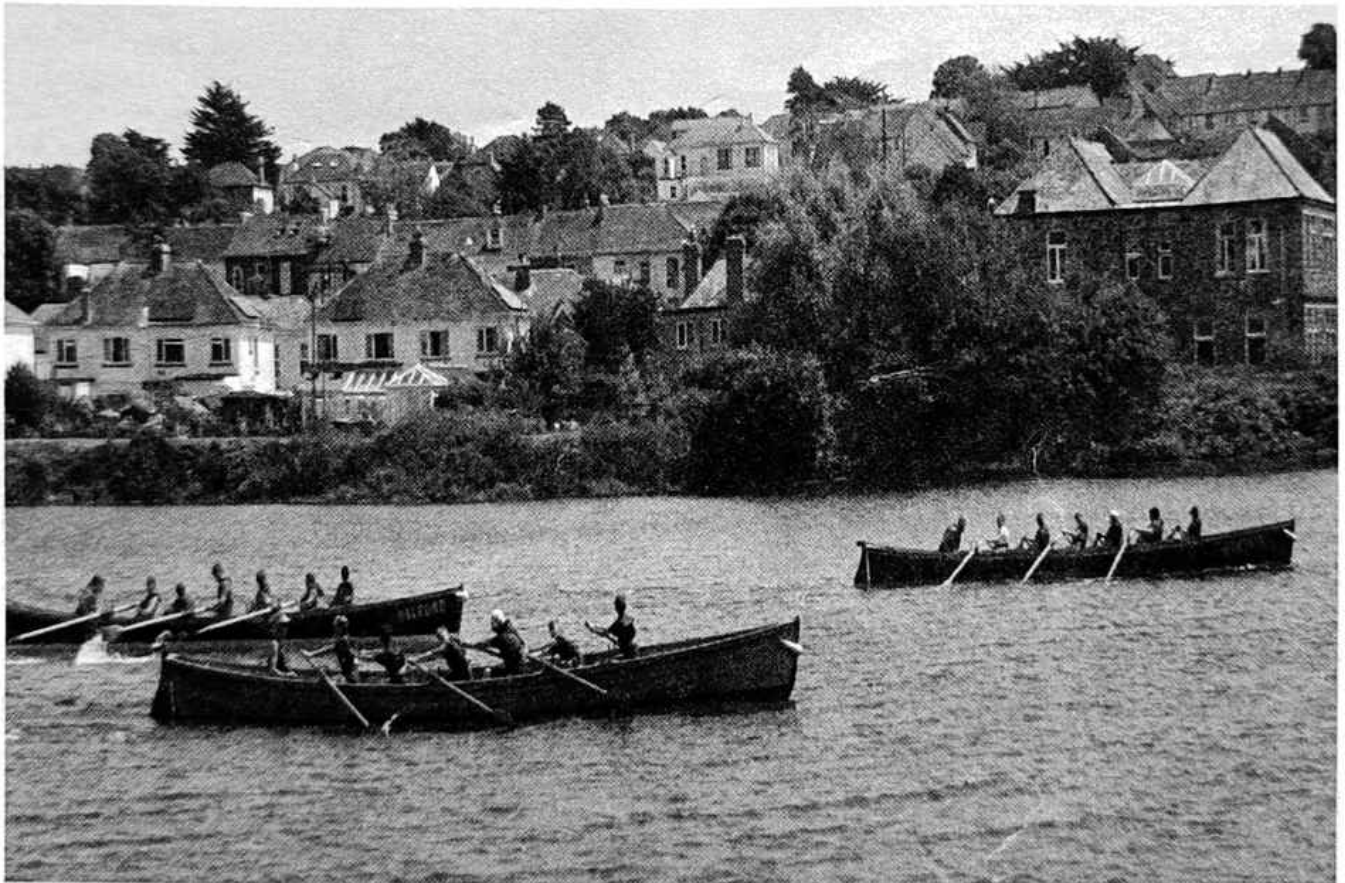


HAYLE PUMP NEWSLETTER

Championship Gig Racing on Copperhouse Pool



Free! thanks to our volunteers
and advertisers.



Hayle Pump Newsletter

Passmore Edwards Institute, 13-15 Hayle Terrace TR27 4BU

The Pump is produced by volunteers as a community newsletter.

NB All articles accepted are not necessarily the view of the editorial team.

View online at www.haylepump.org.uk

Editorial team contact

editor@haylepump.org.uk

Team Members

Tina Morgan (Subscriptions)

Stephen Murley (Editor)

John Cole (Distribution)

Jeff Turk (Advertising & Treasurer)

Subscriptions

Tina Morgan

Phone: 01736 756567

For 6 issues by post, please send a cheque or postal order for £4.40 made out to **C.M. Morgan** and send to **Tina Morgan, 29 Bodriggy Street, Hayle, TR27 4NB**

Please give your telephone number as well as the delivery name.

NEXT ISSUE

Dec/Jan 2023

Send any articles, copy and club listings to: editor@haylepump.org.uk

or drop off at:

Angove Sports (Copperhouse

The Farm Shop (Foundry)

Passmore Edwards Institute

Advertising / Treasurer

Jeff Turk

Phone: 01736 752319

Send your adverts to:

ads@haylepump.org.uk

or use the drop off points.

Advertising Rates:

1/8	63 x 47.5	£10
1/4	63 x 95	£15
1/2	NA	

NEXT DEADLINE is

13th November 2022

1st CHOICE PAVING

Drives, patios, paths, landscaping, resin bound aggregates and artificial grass.

01736 753087 07969 960128

www.1stchoice-paving.co.uk



Heat was on at U14s Gig Championships Hayle

In very warm temperatures on Sunday 17th July Hayle Gig Club once again hosted the U14s Championships at Copperhouse Pool. 17 Clubs from around the South West from Brixham to Isles Of Scilly battled it out throughout the day with great rowing and some fierce competition. Eventually Pendeen came out overall winners and set the fastest time of the day in 3,47. They were pushed very hard in the Final by

Newquay A and St Marys A. The Plate was won by St Marys C. Once again everyone enjoyed their day and showed great rowing skills and endeavour. Club congratulates all participants, well done!

This event cannot happen without the support of the community, local businesses, and our sponsors Prima Bakeries, Lulas, Old Quay House and The Cornubia. Hayle Club would particularly like to thank Hayle Surf Life Saving Club for water safety, Hayle Council for allowing use of the car park and Pool, Corinthian Homes for assisting with car parking and toilets, Biffa for bin provision, Phoenix Signs for banners and Quicks for supplying the generator. Hayle Gig Club welcomes interest from any young people who would like to have a go at rowing, contact us through our Facebook Page or by emailing Club Secretary at haylegigclub@gmail.com



**Kim's
Yoga and Pilates at
Lelant Village Hall**

**Every Monday
Yoga 8am
Pilates 9.30am &
11am**

**Carnhell Green Studio
Wednesday and Friday – Yoga
8am
Sunday 10am**
Sunday beginners slow flow yoga.
10am at Carnhell Green Studio £9
a class.

On-line and 1-1
classes also
available.

Contact Kim
07751552313



T

Come to

O

**BLEWETTS
TOY SHOP**

19 Penpol Terrace, Hayle
TR27 4BQ

Y

01736 753012

S

Hayle Day Care Centre



The Hayle Pump has over the last six years donated £16,000 to the Hayle Day Care Centre and more before that since the inception of the Pump. We recognised that the Centre provides a great service and need for the elderly and requires considerable funding to



HAYLE DAY CARE CENTRE **Commercial Road, Hayle**

An affordable day care facility for the elderly of Hayle, St Ives and district

Transport • Freshly cooked meals

Also includes bathing and hairdressing
Therapy and lively social interaction

Always a friendly welcome

Call 01736 755000

continue especially now with the energy costs going through the roof. It was for this reason that we selected the H,D,C as a regular recipient of our donations that we make to various local organisations.

They include The Swimming Pool, Harvey Foundry Trust, Friends of ST Erth, NAWT, Old Cornwall Society, Hayle Christmas Lights, Hayle Heritage Centre, Friends of the Towans, Hayle in Bloom, Hayle Film Club, Passmore Edwards Institute, The Boules Pitch. These are just some of the many organisations to which we have made donations,

It has always been our policy to help local organisations and promote local businesses for the benefit of Hayle. So when funds permit we make donations which really are funded by our advertisers who have supported the Pump and have kept it going for these last twenty eight years to whom we say a big thank you and hope you will so continue..

For many it is their only contact with others where they can meet their friends, enjoy good wholesome food and perhaps be entertained, as when we were there, by musician David Cupples, in warmth and comfort. The staff are excellent and extremely helpful, keeping an eye out for any changes in health and requirements of the those who attend regularly.

We have put in a letter which was



David Cupples entertaining an appreciative audience.


sent to the Pump by June Rumble which shows just how much the Centre is appreciated and also really needed by anyone who needs a bit of comfort and companionship. It can get very lonely without contact and kindness shown by others and for these reasons we heartily support The Hayle Day Centre and hope that it may long continue to help those in need.

Letter to the editor

Dear Sir,

Would you please consider the following piece for the Pump? The lack of funding means many disabled men and women are left - some alone and disabled, with nothing to brighten their days. Hayle Day Centre is a warm and welcoming place, the staff have time and patience with people,

I've been going for about five years and it has had a big effect on me: as I said - I have limited



**Move that
Body to
Music
Classes for 60s Plus**

**Classes held in a socially
distanced safe environment
Thursdays at Hayle
Rugby Club at 10.30 am
£5.00 a session**

**Phone Sylvia on
01736 757560
for more info**

visibility, going deaf and not very mobile.

I hope you will consider my request.

Thank you for your time and I've got my fingers crossed.

Sincerely. J.Rumble

A teenager brings her new boyfriend home to meet her parents. They're appalled by his haircut, his tattoos, his piercings. Later, the girl's mom says, "Dear, he doesn't seem to be a very nice boy."

"Oh, please, Mom!" says the daughter. "If he wasn't nice, would he be doing 500 hours of community service?"

The Probus Club of Hayle

is seeking new members..

Probus is an Association of active retirees who join together in

Clubs, the basic purpose of which is to provide regular opportunities to keep their minds active, expand their interests and enjoy the fellowship of new friends. We meet at the White Hart Hotel, Hayle at 1.00 pm for lunch on the second Thursday of the month. A warm welcome awaits you.

Contact Stuart McClean, 07342



Mr. B's

Famously Fresh Ice Cream

The only place you can get a delicious

POP Waffles



OPEN DAILY

Fore Street, Copperhouse
Penpol Terrace, Foundry

📍 [mrbsicecream](#)

📱 [mr_bs_ice_cream](#)

Tel: 01736 757925

www.mrbsicecream.co.uk



The Oldest Chippy in Hayle!

Opening hours

Sunday — Monday: Closed
Tuesday: 4.30—8
Wednesday: 12-2 / 4.30—8
Thursday: 12-2 / 4.30—8
Friday: 12-2 / 4.30—8
Saturday: 12-2 / 4.30—8

We have a 5* Hygiene rating

See us on  @Lewy's Fish & Chips

01736 759381

48 Penpol Terr Hayle TR27 4BQ

691046,
stuart.mcclean@homecall.co.uk

St Ives Probus Club is looking for new members, having survived Covid.... and now meeting again. We are a group of mostly retired men who meet on the second Monday each month, at St Anta's Church Hall, Carbis Bay.

We gather at 10.00am for coffee, biscuits (£2 each) and chatting ! We try to find a good speaker who will talk for about an hour and answer questions, sometimes with slides etc.

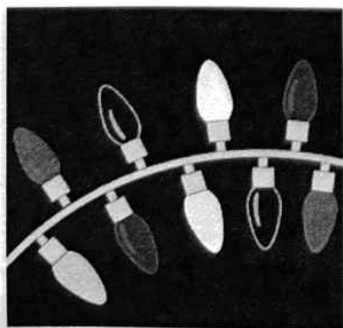
After more chat we all go home for lunch at about 12.00.....

It's all very informal and friendly, and we'd love you to join us!

If you are interested, please contact

Melville Osborne, 01736 756252,
melos40@btinternet.com

Chris Paulin, 01736 799024,
paulinchris@gmail.com



**Hayle
Christmas
Lights
needs your
help.**

Unfortunately, even with almost 400 members on our Facebook page, our recent AGM was poorly attended with no new faces

offering to take on any of the executive roles on the Hayle Christmas Lights committee. Therefore, the present executive officers agreed to continue for one more year.

Unless younger members of the Hayle community come forward to take on some of the responsibilities and work involved in organising and maintaining the lights this could be the last year that the lights go up in Hayle for the festive season.

This would be very sad as we have had tremendous financial support from individuals, businesses, Cornwall Council and Hayle Town Council over recent years which has enabled us to

THE FARM SHOP

31 Penpol Terrace, Hayle
TR27 4BQ

**Open - 7 days a week
8am - 5pm**

FOR ALL YOUR LOCAL PRODUCE

Fruit, vegetables, plants,
flowers, free range eggs and
Cornish potatoes.

NOW IN

Cornish swede,
Local strawberries,
Pumpkins for Halloween.

maintain and improve our Christmas displays. Our small group of volunteers continue to work hard though unfortunately none of us are getting any younger and though the minds are willing, the bodies are less able to take on the tasks required.

The infrastructure is now in place which allows us to put up these displays much more easily than in the past and we have really good storage and working facilities available to use.

We meet once a month (the last Thursday of each month except December) at 7:00pm in the annexe of Hayle Day Care Centre.

These meetings are open to

everyone and enable us to share ideas and plan the necessary work.

Our next meeting is on 27th October when we will be organising the displays for this year.

Please come along and offer your help.

If you cannot make the meeting, but would like to help out this year in fund raising, installing the lights or in any other capacity, please contact:

haylechristmaslights@gmail.com or contact

Patrick on 07787 962001.

Alternatively go along to our Facebook page where you can join and offer to help.

Sweet William Florist



.....for the personal touch.

07928 100 690

01736 740 644

www.sweetwilliams.com

The Gallery Coffee Bar

Always welcoming and friendly



You can sit in the fresh air in our lovely sunny courtyard,

or

relax on a comfy sofa with great coffee, home-made cakes, breakfast and light lunches.



1 Chapel Terrace Hayle (by the Viaduct) ...**See you soon**

07765 229 764

Dogs (and well behaved owners) are welcome

Council Corner October and November 2022



Message from the
Mayor, Cllr Anne-
Marie Rance

"We are all devastated by the news of Queen Elizabeth II's death. It is a profoundly sad moment for us all. At the Queen's Coronation she promised to dedicate her life to the service of her people, and she did just that. For many people the Queen has been a symbol of certainty throughout their lifetime. This is a truly historic moment. We convey our deepest condolences to the King and the Royal Family"
Rest in peace.

Councillor Vacancies

Sadly, Councillor Donna Anton has resigned following the unexpected passing of her husband John Bennett. Therefore, we have a further vacancy on the East Ward. Please look out for the Notice of Vacancy in Office of Town Councilor,
If you'd like to know more then

DIRECT TRANSPORT Removals & Storage

**LOCAL & NATIONWIDE
Full & Part Packing Service**

**Call for a free
competitive quote**

**Tel: 01736 603018
or 07476 223221**

7 days personal service



Webb & Philp Ltd

electrical contractors



18th edition
BS7671

All aspects of Electrical work undertaken

Free Estimates. No Job Too Small.
Prompt. Reliable. Fully Qualified. Est 1972

- ✓ Re-Wires
- ✓ Security
- ✓ Showers
- ✓ New Build
- ✓ Testing
- ✓ Maintenance
- ✓ PAT Testing
- ✓ Extra Sockets & Lights

www.webbandphilp.co.uk

Tel/fax 01736 753651 Mobile: 07419 376882

Email: electricians@webbandphilpltd.co.uk

please call the office, details below, for an informal chat with the Clerk or one of the officers but also feel free to contact one of the existing town councillors who could provide information. and discuss what's involved from their perspective.

Hayle Gorsedh

Hayle played host to Gorsedh Kernow's Annual Ceremony and Esedhvos from 1st – 4th September. Highlights included The Storybook Republic regaling audiences around Hayle including visitors to the Day Care Centre, with Cornish stories, songs and poems; a traditional Cornish ceilidh on South Quay; the Bardic

ceremony and concert with MacQuarrie and Toms, Tir Ha Tavas, Bryher's Boys and Tom Dale at Hayle Academy and a variety of talks and walks around town.

A resounding thanks to all of those involved particularly members of Hayle WI, Hayle Lions and Hayle Old Cornwall Society. Special thanks to Margaret Stockton, Betty Rawlings and Trevor Smitheram who played instrumental roles in delivering the Gorsedh.

Events in Hayle

If you are running an event in Hayle, whether you are an individual or on behalf of an organisation, please notify Hayle



PLANTECH
GARDEN SERVICES

EST 2006

Lawns & Hedges Cut
Tree & Shrub
Pruning ,
Lawn Care
Treatment Services
Gardens Cleared
Free no obligation quotes

Mob: 07979 546434
Tel: 01736 754401

ALEXANDER McDONALD

Gutter clearing and fascia board cleaning. Painting, pressure washing, gardening services. Also Fencing and Fence repairs and all those little jobs you keep putting off. Free estimates.

Big enough to cope, but small enough to care!



Mob 07880 777 591

Home 01736 753102

Town Council with the details so we are aware and can publicise via info@hayletowncouncil.net.

If you are planning an event on any of the Hayle Town Council owned sites including Hayle Recreation Ground, King George V Memorial Walk or The Millponds, please request an event booking form. Ideally this will be 8 weeks before your event and you will need to send your completed HTC booking form, risk assessment, and insurance details to us. If your event is likely to attract more than 500 people and/or requires an alcohol license or street closure then you will also need to contact Cornwall Council via: <https://www.cornwall.gov.uk/business-trading-and-licences/organising-an-event>.

Hayle Town Council would like to create a comprehensive guide to events in Hayle for residents and tourists. We can help to publicise those events through the DSCVR app and the HTC website calendar.

If you are planning an event over the next 12 months please let our Projects and Events Officer know via julie.baldwin@hayletowncouncil.net

DSCVR app

Finding out about what is going on in and around Hayle has been made easier through the DSCVR

app. You can download the app on any android or iphone device here:

If you are a local business and would like to be featured on the app, then get in touch via info@hayletowncouncil.net and we can make sure that potential

HOSKING
ROOFING

* GRP FLAT ROOFING * TILING
* SLATING * REPAIRS * NEW ROOFS

Tel 01736 758458

Mob 07909 943 098

PAUL SHERRIS

**Hayle's only
local family owned
FUNERAL
DIRECTOR**
**Private Chapel of Rest
Pre-Payment Plans
available**
**West Terrace, Hayle.
TR27 4JS.
01736 753969
Day or night**

customers know how and where to find you.

Do let us know about any events that you are hosting so that we can ensure that they are added to the app. Whether you're running a workshop or a concert, Dscvr can reach people based in the town along with anyone thinking about visiting Hayle.

Hayle Town Council
Hayle Community Centre
58 Queensway
Hayle
TR27 4NX
01736 755005
info@hayletowncouncil.net
www.hayletowncouncil.net
Office hours 9.30am – 12.30pm

THANK YOU!

Firstly, I'd like to say a big 'thank you' to everyone for keeping our Towans safe from fires this summer. I know that having a BBQ is a favourite part of the summer season, whether as part of a visit to the beach or a back garden picnic. There were many times recently when I thought it's only a matter of time before an area



Hayle Methodist Church 50th Anniversary Celebrations

All welcome - no charge

Sat 26th November

*10am-12 Coffee morning and display**

*5-7pm Family Quiz & Pasty Supper
(please book)*

Sunday 27th November

10:30-11:30am Morning Worship

*3-5pm Cream Tea **

Saturday 3rd December

*10am-12 Coffee morning and display **

Sunday 4th December

*10:30am Anniversary Service led by Chair
of the District, Revd Lorraine Mellor*

3:30-5:30pm Messy Church

**Commemorative display*

6 Chapel Hill, Hayle, 01736 752204

www.haylemethodist.co.uk

Haylemethodistchurch

WEST CORNWALL MOBILE FOOT CLINIC

For the professional treatment
of:

Corns & Callus Diabetics

Verrucas Athletes Foot

Thickened Nails

Fungal Infections

Ingrowing Toe

Nails

Cut-trim Nails

All in the

comfort of your own home

Peter Williams

S.A.C.Dip FHPT/FHPP

07901 803493

Evening & weekend calls
available.

pwpetewilliams@googlemail.com



goes up in flames, but thankfully it didn't happen and now the risk seems to have passed.

Ponies will return here very soon, and Cumberland White cattle onto Godrevy Warren. You might think this is a sudden change in subject, but actually there's a link! By eating-out the summer's grass during the winter, this greatly reduces the amount of fuel left for a fire the next year. It also, of course - this is mainly why we do it - opens up the turf for plants to germinate. Dr Colin French, recent author of 'A Flora of Cornwall' and ace local botanist, has made some very exciting discoveries during recent surveys. A rare horsetail on

JAKE'SMOBILE
PHONE REPAIRS
01736 757233
07873 799 930

Gwithian Green - the first time in this area since the 1890s - and the rare Irish Sorrel at Gwithian Towans, have both been found in areas grazed last winter.

We hope to increase the work we do with local schools this winter, visiting the Towans to learn more

Transformations Cornwall

Give your home a luxurious finish.

Create the style you desire.

*Bespoke curtains, blinds and soft
furnishings.*

Handmade to a high standard.

Professional friendly service.

Elizabeth Gregg

17 Penpol Road Hayle

TR27 4AD

01736 752434

elizabethmgregg@gmail.com

Www.facebook.com/

transformationsCornwall

www.thebigpinktree.co.uk



**Your Local Gift Shop
on Penpol Terrace**

The Big Pink Tree

01736 757006

about the wildlife and history, help with their management and for the improved health and well-being of children and staff. On this point, please could I make a request that EVERYONE picks up after their dog. I know most of you do, but not all, and it's not something we can blame on summer tourists as it remains a problem all year. You might think it's ok to leave it lying as it's outside and will rot down, but apart from ecological issues I'll discuss in the future, it's very unpleasant to step in or touch and can cause serious diseases. If we want to encourage our young people to visit, enjoy and respect the Towans, it needs to be safe and pleasant - THANK YOU

AGAIN!

Our winter scrub-bashing programme has started now - most Tuesdays and Thursdays. If you'd like to help, please do get in touch. We provide tools, gloves and good company and work in a very relaxed manner. Just bring some enthusiasm, stout boots and suitable outdoor clothing.

Finally, a diary date for you: we'll hold our AGM on November 7th, venue tbc.

To see our programme, look at www.friendsofthetowans.org.uk for more details, and to get involved just contact me at martinrule@talktalk.net
Best wishes from the Towans Ranger, Martin Rule

PROPERTY MAINTENANCE

Painting

Gardening

Fencing/Sheds.

Experienced and reliable

Competitive rates

Contact

Simon Wells

07709 926 595

01736 754408

simonwells1466@gmail.com



We are a Pre-loved Boutique selling an extensive range of quality label clothing, shoes and accessories. Buying and selling on commission is easy and we are on hand to book in your clothes, bags and accessories. Make money on your once cherished garments, it's so easy.

*1 Chapel Terrace Hayle TR27 4AB
(by the viaduct)*

07765 229 764



HAYLE AMATEUR DRAMATICS SOCIETY

The group had some very sad news in August, as Terrie Cook, one of our truly loved members, sadly passed away, whilst swimming off Porthmeor Beach, St Ives. She was so looking forward to playing our Fairy Goodlife, after her first role as a Princess, in our last production Aladdin. She will be sadly missed by all members of HADS as well as many other groups in which she participated. All our condolences go out to her



sband Mike and the rest of her family.

Meanwhile rehearsals for Mother Goose are continuing for our performances in late October. The dates for Mother Goose start during the October half term.

Friday 21st at 7.30pm,
Saturday 22nd at 2.30pm and 7.30pm,
then **Friday 28th** at 7.30pm and **Saturday 29th** at 2.30pm and at 7.30pm.

We will be performing in The Hayle Day Centre and tickets will be £4.00 for adults and £3.00 for OAPs and children under 13. Tickets are on sale in **Blewetts Toy Shop, Foundry.**

We are always looking for new members to join our little group.



PHILPS

FAMOUS PASTIES OF CORNWALL

Order our Famous Cornish Pasties online to be delivered to your door at www.philpspasties.co.uk

Hayle East Quay 01736 755661
Hayle Foundry Hill 01736 753302
Marazion 01736 710332
Praze-an-Beeble 01209 831360



CLIFFORDS

Plumbing & Bathrooms

Need a
Plumber?



From a dripping tap to a
complete bathroom

We have a new phone number

01736 752955

07761938183

cliffords4@btinternet.com

 Cliffords plumbing and bathrooms



We are not professional in any way. Just getting together for a bit of fun and at the same time bringing a little entertainment to the residents of Hayle. You are welcome to be Onstage or Backstage to help in our productions. Why not come along and have a go? We meet Mondays at Hayle Day Centre 7.30-9.30pm. Contact: had.s.hayle@gmail.com or Ken Townend on 07733 156530. Ken Townend BEM (Chairman HADS)

A little bit of advice in these difficult times - Singing lifts the spirits, and if you drink enough spirits you'll start singing!

Blue Plaques of Hayle: Phillack Church

The Bells of Phillack

I have taken the liberty of combining the Blue Plaque story, this time about Phillack Church, and The Bells of Phillack article, as they seemed to overlap. The townspeople of Hayle will be well familiar with Phillack Church, high above the town and outlined against the Towans and the sky. The Church of St Felicitas and St Piala has been a presence for hundreds of years. Historians have established that Christianity was known in this area in the 4th Century, and has been faithfully

ALL AERIALS

TV Aerial & Satellite TV Specialists.

digital



Registered Digital
Installer

25 Years Experience

For all aspects of Tv Aerials,
Satellite Systems Fixed &
Motorised, Installations &
Repairs

Free Friendly Expert Advice By
Local Engineer.

Tel : 01736 759225

Mobile : 07979503907

Email. jonathan@allaerials.co.uk



Greek Food delivery service to
Hayle, St Erth, Connor Downs, Lelant radius

A traditional culinary experience just
like in Greece. Producing luscious
dishes with a respect for
traditional flavours

Craving proper Greek Gyros?
here is the place to find it!

Pork Gyros - Chicken Gyros - Moussaka
Kleftiko - Gemista - Baklava
and many more Greek delicacies!

Find our menu on Facebook/ProperGreek

or give us a call on **07983179990**

propergreek @proper_greek

followed.

The present Church dates from the middle of the 15th Century. Celtic, Saxon and Norman churches probably preceded the current building. The main body of the Church was rebuilt in 1856/57. The architect was William White, who was well known as a restorer of Cornish Churches.

The Church is light and airy, with fine columns and arches. There are several lovely windows, including one of St Felicitas with her 7 children, and another where St Piala is depicted among the martyrs. The font is Norman and, with a few 'improvements', has been used for over 850 years. The pulpit is made up of the old rood screen that once divided chancel and nave, and was probably made in the 17th century.

During the restoration of the Church in 1856/57, a small glass phial was found in the stonework, containing, possibly, blood! Whose blood? That remains a mystery. The phial was replaced in the chancel of the new building. But where? Another mystery!

Moving outside the Church now, there is a Chi-Ro stone above the Church door, thought to date from the 4th Century. The letters, X and P combined are the first two letters of the Greek for Christ. The Chi-Ro symbol

was a secret sign for early Christians to identify themselves to each other. Later, it was adopted by Constantine the Great, and decorated the uniforms of his warriors. He therefore claimed Divine Intervention when he won great battles.

In the Church grounds are other signs of days long gone. A gravestone inscribed with Latin dates from 350/450AD, but the Latin translation is uncertain, and a stone cross dating from around the same time. Both objects pre-date the Irish Saints after whom the Church is named.

The granite stone cross outside



MOUNTAIN - ROAD - BMX SPECIALIST

Bicycle Sales and Repairs

Tel: 01736 753825

36 Penpol Terrace, Hayle TR27 4BQ
www.haylecycles.com

the Church porch dates from the 10th Century. A coping stone lying alongside the wall of the Church is thought to be the lid of a stone sarcophagus dating from around 900 AD.

Phillack Church is surrounded by gravestones, and the cemetery extends into the Towans. A walk among the older graves is

always interesting, with many names still common in Hayle and Phillack today. There are several Commonwealth Graves, holding servicemen who died as a result of war.

The Church Tower dates from the 14th Century, the oldest part of the Church fabric. The Tower contains a fine set of eight bells, and a band of ringers regularly ring for Sunday services, and for practice on Tuesday evenings. The current bells have been in use since 1928, when they replaced the three bells dating from the 18th century. It is said, perhaps with some bias, that they are the best bells in Cornwall! Some maintenance work is due to be carried out on the bells soon.

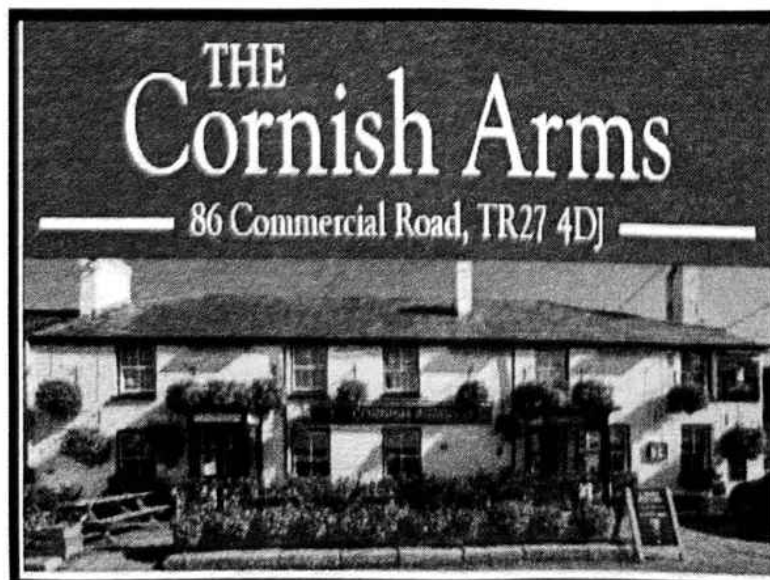
As this article is written, the Nation is mourning the sad loss of Queen Elizabeth II, and marking the proclamation of her son as King Charles III. The Central Council of Bell Ringers and Truro Diocesan Guild of

Ringers have protocol to guide ringers during such times. Bells may be muffled or half muffled or not muffled at all during the days of mourning, so you may notice that the bells sound different sometimes. Bell ringing – campanology to give it its proper name – is a great pastime, well worth preserving into the future. You will find a number to call at the back of Hayle Pump if you are interested.

Our small town is fortunate to have a wealth of history within its boundaries. There will be another article next time.
T.M.

THE CORNISH ARMS

This November will mark our three-year anniversary at the Cornish Arms. During this time, we have experienced repeated lockdowns, and for the first time this Christmas, we will all be able to gather with friends and family without restriction. The Cornish



Open every day serving lunches and evening meals. Fabulous beer garden! FAMILY friendly- friendly dogs welcome. Famous for our ales and Sunday roasts!

Ph 01736 753237



The Cornish Arms Hayle
@thecornisharmshayle

Arms in Hayle is pleased to announce that every Sunday in December, we will be celebrating with a Christmas roast. We are proud to be a part of the Hayle community. This week alone, we have held celebrations for a wedding, many milestone birthdays, and a wake.

On a personal note, I had a terrible fall on September 3rd that required major surgery and hospitalization. May I say a big thank you to the staff and volunteers of the Royal Cornwall Hospital (Truro), but in particular, a heartfelt gratitude to the entire team at St. Michaels Hospital (Hayle). Thank you for all that you do-

Bernadette Dalingwater

Hayle Heritage Centre is coming to the end of a great season. We have had over 1500 people through the door so far, run four local history talks, held five guided walks and three artist-led workshops, as well as two popular drop-in family craft sessions. We have continued to collaborate with The Sensory Trust, delivering workshops to Hayle Youth Project, Get Out There, and the Wednesday Wanderers. This year we have also - for the first time in our new ground floor exhibition space - held two temporary exhibitions which have proved a big success. Our last temporary exhibition of



Saints
funeral services

INDEPENDENT FAMILY FUNERAL DIRECTORS

- PRIVATE CHAPEL FOR SERVICES
- RELIGIOUS/NON RELIGIOUS WELCOME
- PRIVATE CHAPELS OF REST
- PRE PAID FUNERAL PLANS

TEL: 01736 447070 (24HRS)
www.saintsfunerals.co.uk

KING GEORGE V MEMORIAL WALK, PHILLACK, HAYLE .

MEMBER **SAIF** INDEPENDENT FUNERAL DIRECTORS

BARNOON CHAPEL, CLODGY VIEW, ST IVES.

Funeral Flowers Cornwall
By Flowertime @ The Big Pink Tree

Flowers speak, where words fail.....
Saying goodbye is never easy, allow us to express your sentiments with a beautiful floral tribute.

www.wesendflowers.co.uk
01736 757006
17 Penpol Terrace

this year is Bards and Baritones: A History of Hayle Male Voice Choir and the Cornish Gorsedh in Hayle, which explores these mainstays of Cornish Culture. Gorsedh Kernow's founder and its first Grand Bard, Henry Jenner (1838-1934) lived at Bospowes, Hayle, with his wife the renowned author Kitty Lee. Their contributions to the preservation and celebration of Cornish Culture impact our daily lives still today. This exhibition explores this history as well as male choral singing, another legacy of Cornwall's industrial era. The exhibition is on until Saturday 29th October when we will close for the year.

We will be open throughout half-term and on Wednesday the 26th

October are having a free craft session for children: Harvey's Halloween Howlers.

Drop in between 2pm and 3.45pm to have a go at making your own howling ghoul!

Whilst we are closed our staff and volunteers will be busy working on the collection, developing the renovation project at John Harvey House, and putting together a fantastic programme of talks and activities for next year.

Thanks to the generosity of the public, the Heritage Centre has also had lots of fascinating acquisitions, with sixteen artefacts being donated (including an original watercolour painting of the Associated Octel Works and the plaque which adorned the Hayle Male Voice Choir Practice Room).

**DAVE
THOMSON
DECORATING
INTERIOR &
EXTERIOR.
FREE QUOTATIONS
TEL 07518 136 730
01736 754647
Dave.thomson2013
@hotmail.co.com**

HEARING
SERVICES CORNWALL
LIFE SOUNDS GREAT 

**Local Independent Hearing Aid
Audiologist Richard Bunce
based in Hayle can help you
hear again.
Service and repairs to most
makes .
FREE HOME VISIT HEARING TESTS
covering Cornwall .
Book your appointment on
0787 218 3742
ears11@sky.com**

Over winter we will be highlighting these objects on our social media platforms, our website and here in the Pump.

Harvey's Foundry Trust is looking for new trustees to join us. In particular, we are seeking a new Treasurer. If you have an interest in history and have a background in the financial sector, we would love to hear from you.

For more information, please contact Laura Walton on 01736 757683 or via email at laura@harveysfoundrytrust.org.uk In the meantime, please keep an eye on our website and social media for updates on what we are up to.

Bodriggy Health Centre

60 Queensway, Hayle, Cornwall,
TR27 4PB

FLU & COVID VACCINES
AUTUMN 2022

We will be holding clinics this year for the administration of both your Flu and Covid vaccinations. At the appointment you will be offered your Flu vaccination alongside a Covid booster vaccination; this is in addition to any other Covid-19 vaccinations you may have already received.

We anticipate all the Saturdays to be very busy, so we appreciate your patience and thank you in

PASSMORE EDWARDS
INSTITUTE



MEETING ROOMS FOR HIRE

Hayle's Village Hall
has rooms for
meetings & activities
for 2 to 60+ people

For more information:

WWW.HAYLE-PEI.ORG.UK
bookings@hayle-pei.org.uk

Or call: 07895-601978

13-15 Hayle Terrace
Hayle, TR27 4BU
Charity Number 268429

SHIATSU

Physiotherapy massage

CHRISTIAN THELERMONT

Fellow of the Shiatsu Society UK (FWSS)

25 years practising

- Gentle or deep tissue massage
- Increases circulation and energy
- Triggers own body healing and immune system
- Aligns body posture
- Client stays fully clothed

synergyshiatsu.co.uk

07949 938096

advance for being kind to our staff.

If you are able to walk to the surgery (Hopefully the sun will be shining!) then that will help with traffic flow.

You can find more information about the vaccination campaign for the 2022/23 Autumn season on the following website:

<https://www.nhs.uk/conditions/vaccinations/flu-influenza-vaccine/>

There is no appointment necessary, but we anticipate it will be less busy later in the day. The clinics will start at 7.50am and will continue until 3.00pm on the following dates:

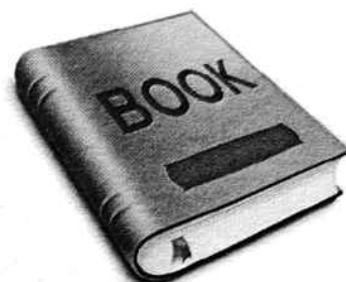
Saturday 8th October- - All those aged over 65 & aged 16-64 with an underlying health condition-- All invites have been sent via text & letter & should be received in the following few weeks.

Saturday 15th October- All those aged over 65 & aged 16-64 with

an underlying health condition- PLUS- Anyone aged 50-64 with NO underlying health condition,

Hello from the team at Hayle Library

We are fully open for browsing and have 3 out of our 5 public computers



available for use with a 60-minute time limit. You can print from our computers, and we have a scanner attached to number one. There are great online resources available to our customers like Borrowbox where you can borrow e-books and e-audio books, Press reader which has lots of newspapers and magazines to choose from. E-comics are also available, Medici.tv which has classical music, opera and dance



NEW ADULT BEGINNERS BALLROOM AND LATIN DANCE CLASSES

COMMENCE THURSDAY 8TH SEPTEMBER 8-9PM

AT LEEDSTOWN VILLAGE HALL TR27 6FJ

FOR MORE DETAILS CONTACT ANDREW ON 07950687392 OR 01209833773

videos and we have a great on-line language site called Transparent language online. Free Home Library service for those who are housebound and unable to get into the library is available.

If you know of any family, friends or neighbours please tell them about this. We have a lovely team of volunteers who can choose books and deliver them safely to you once a month so if this something you could benefit from, please do get in contact with us by ringing the contact centre on 03001234111 and ask to be put through to us.

For those of you who are self-isolating we can also get some

books out to you no problem so ring the number above.

We are running our Rhyme-time and Storytime sessions again. Our Rhyme-time session is outside on a Wednesday morning at 11am if the weather is dry so bring something to sit on, a cuddly toy and dress warmly. Our Storytime is on a Friday at 3.45pm and its outside if the weather is dry and inside if not. One week is Arts and crafts and the other Lego. Look on our Facebook page for more details.

Our current opening times are Monday, Wednesday and Friday from 9.30-5pm and on a Saturday morning from 9.30-12.30pm We will resume other partner drop

Mike Thornton

**Plumbing & Heating
Services Breakdown,
Servicing & Repairs to all
makes of boilers**

01736 740965

07704 244 376

**mc.thornton8@btinternet
.com**



Café Riviere

Across Hayle's Jubilee Bridge

**Serving a variety of hot
food, late breakfasts,
drinks, ice-cream, cream
teas and snacks.**

- *Indoor and outdoor seating.*
- *Take-away is available.*
- *Open all year.*
- *Next to the public open-air swim pool, sub-tropical gardens, promenade and nature reserve.*

ins and sessions when we deem it safe to do so including a CAB drop in in the near future so keep an eye on our Facebook page to see what's going on. We will also be having RNID and the Homegroup outreach service back into the building. We hope to see you soon.

Hayle Lions invite you to a Christmas Craft Fayre on

Dec 3rd at Passmore Edwards Institute.

10am -2pm. There will be various craft stalls to peruse for gift ideas with available refreshments to



help relax you at this busy time of year.

Plus ... Santa and his sleigh will be there to welcome the children. So, start this festive month supporting your local Hayle Lions. Dates to see the Santa Sleigh around Hayle in Dec; will be printed in the next issue Pump's back page. For updates visit Lions Facebook page.

Heyl St Piran Singers



The pandemic hit choirs badly and many choirs have folded over the last couple of years. We at Heyl St Piran Singers (HSPS) were hit too, not only losing several members who have just not returned for whatever reason, but we also lost our Musical Director to Covid. It is a wonderful relief to us that we have found a new talented and experienced Musical Director in John Burt (welcome John), and we are also starting to attract new members.

However, we could always welcome



David N'jie

PAINTER & DECORATOR

 07944 156995
  01209 831397

dave.painter@hotmail.co.uk

Trethannas Cottage, Praze-an-Beeble
Camborne TR14 0LH



MW Carpentry & Construction

RENOVATIONS, EXTENSIONS & NEW BUILDS

For All Your Carpentry Needs
Tel: 07930 073332 Email: m.w.carpentryservices@mail.com



a few more members and invite anybody who wishes to start singing with a friendly, four-part harmony ladies' choir to come along and give us a try, we meet from 7.00pm until 9.00pm on Wednesdays at the School Rooms in St Erth - just by the church.

We have recently held a very successful concert at St Clement Church in Truro, with all proceeds going to our late MD's chosen charity. With help from Roseland Church Choir, soloist Abigail Holmes and St Clement Church, we raised a magnificent £1100.00 for the Cornwall Leukaemia Trust.

Our next concert - a joint concert with local mixed voice choir One and All is to be held at 7.00pm on Wednesday 14th December at the School Rooms in St Erth. We invite you to join us there to enjoy the

Christmas season festivities. If you would like the choir to come along and sing at any event you might be organising, or at a group you hold, we would love to hear from you. For any enquiries or more information about joining the choir or hiring us, please contact Carol Renton on 01736 753496.

We look forward to hearing from you.

Many thanks, *Carol Renton, HSPS Chairman.*

In Denver USA the members of a Sundayschool class were asked to set down their favourite biblical truths. One youngster laboriously printed: "Do one to others as others do one to you."

SUPPORT LOCAL BUSINESS


ThurstanHoskin SOLICITORS

YOUR LOCAL SOLICITOR

At Thurstan Hoskin we like to take the stress and worry away from you.

We offer expert legal advice on :

- Property Services & Conveyancing
- Wills, Probate, & Powers of Attorney
- Deputyships, Trusts & Inheritance Tax planning
- Commercial Property & Leases

HAYLE  01736 230 055

33 St Johns St, Hayle, TR27 4LL | Mon-Fri 9am - 5pm

info@thurstanhoskin.co.uk

www.thurstanhoksins.co.uk



Malt Decorations

Interior & Exterior Painting

07795 083 839

www.maltdecorations.com

Hayle & Surrounding area

Hayle in Bloom



As mentioned in the last Pump, South West in Bloom judging took place in early July with both judges being complimentary and encouraging about their observations. We are hopeful that this will be reflected in the Awards Ceremony, this year, to be held in Crewkerne (Somerset) on Thursday 13th October. A number of volunteers will be travelling up to attend the ceremony and to meet up with old friends and acquaintances. Earlier in the year, we attempted to follow last year's good practice by planting out in tubs, troughs, and

towers throughout the town as early as possible, to establish 'colour' soon after Easter. Fantastic efforts were made by all the volunteers, as well as Olivia and her Council team, to ensure this happened and that lack of water was not a critical factor in plant development.

There have been many positive comments made by residents and visitors alike, demonstrating their appreciation of the results. Many clubs and voluntary groups in the community have come together to cultivate and generally tend plots of land and nowhere has this been more evident than on the Penpol Terrace Community Gardens. Judges were SO impressed with this community approach along Penpol!

BUSH MONKEY **GARDEN SERVICES**

Keep it simple Keep it local !
Over 25 years experience with that
personal touch.

Qualified and fully insured

Lawn care

Planting schemes

Weed & insect control

Tree hedge & shrub pruning

Garden maintenance & design

Decking Patios

Pressure washing Call Anthony for free
no obligation quote or advice.

07825 881 078

bushmonkeygardenservices@yahoo.co.uk

ANGOVE

SPORTS

COPPERHOUSE, HAYLE.

Tel(01736) 752238.

**For all sports equipment,
clothing, footwear
and fishing tackle.**

**Rackets repaired
and restrung.**



If your group would like to join in with this activity, there are still plots available and in need of some TLC. To make contact with the organisers, email Paul Clark on: paulandmeg@btinternet.com or Rich Barber on Tel. 07485 560253

Another highlight for the judges was the renovated land next to the swimming pool and now named 'Queen's Jubilee Garden'. Thanks once again to our co-sponsors: Paradise Park, Corinthian, and Haven Holidays for enabling us to develop the site. Dog walkers do remember to ask your dog politely not to use this area as a W.C. so as to give the grass the best chance of thriving through its first year.

MJA Waste Clearance

Fully licenced & Insured for waste clearance and light haulage service.

House & Garage clearance,
Garden waste clearance,
Holiday home waste collection,
Shop & Site clearance, Trailer
towing.

Also free scrap collection.

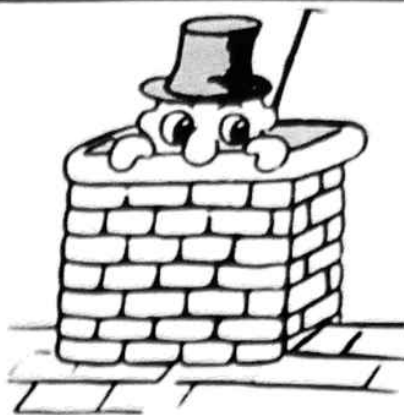
See us on Facebook at

MJA Waste Clearance



mjawcplus@gmail.com

Phone: 07593531363.



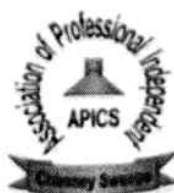
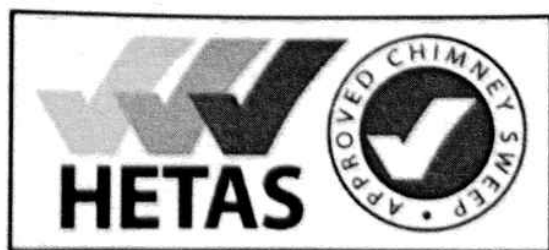
LAWRENCE BUTCHER CHIMNEY SWEEP

Traditional and power
sweeping, Solid fuel
servicing and repairs,
certificates issued, CCTV
flue inspections, cowls
fitted, CO alarms fitted,
fully insured

07966 547829

01736 850033

loloubutcher@aol.com



CONGRATULATIONS:
 to Melanie Warren, winner of Best Residential Garden competition 2022 to Nigel Powell, for designing, planting out and tending the R.B.L. commemorative flower beds in front of Passmore Edwards Institute to all our volunteers who have given their time, energy and even humour throughout the year Hayle in Bloom continue with their regular monthly meetings on the last Monday of the month not inc. Bank Holidays, at the Passmore Edwards Institute at 7.00 pm. The next meeting will be on Monday 31st October. All are welcome and wear your hats!

As always, if you have any questions, ideas or offers of help then please contact either of our Co-Chairs:

**Richard Barber on
 Tel.07485560253 or
 Nigel Powell on Tel.07895601998**

A pair of cows were talking in the field. One says, "Have you heard about the mad cow disease that's going around?"

"Yeah," the other cow says. "Makes me glad I'm a penguin"

After two and a half years, the Hayle Branch of



the RNLI Fundraising team is back! We are still a very small committee but are busy planning events for the next few months. These include selling souvenirs, including Christmas cards (it's never too early for RNLI Christmas cards!) at fun days and the Fish Supper in the spring.

Our next event will be our Coffee Morning on Saturday 19th November at the Angarrack Community Centre from 10am until 12 noon, where we will have a vegetable and produce stall, a raffle, our souvenir stand and of course refreshments to include tea, coffee and mince pies with

BIZ AND BYTES

07974 647524 01736 755971

If you require computer assistance, either training or to resolve a problem then give us a call. Visits arranged to suit you.

Looking after the home user and small business.

**WEBSITES • BROADBAND • TRAINING •
 COMPUTER SUPPLY • TYPING**



www.bizandbytes.co.uk
enquiries@bizandbytes.co.uk



One Day
Antique Vintage Collectables & Militaria
 Buying & Selling
onedayantiques@yahoo.com
Jason Day 07909 850 563
 Unit 14 Old Foundry Chapel Hayle
 TR27 4AB



clotted cream! Please do come along and support us. On the subject of support, we would love some new members to join us. It's not onerous at all; we're a friendly bunch and meet on the second Wednesday of most (not all) months. New ideas for raising much-needed funds for our lifesavers are always welcome. Please phone our Chair, Yvonne, on 01736 753567 or email her at yvonne.cleave@gmail.com for more details. We look forward to meeting you!

Millpond Update

It has been such an odd year weather wise, but we are managing to survive all the various changes which we have experienced.



Our swans are quite spoilt by our residents and visitors but we are having to keep a close eye on their health because of the outbreak of Bird Flu in the South West. This also applies to our ducks and other birds around the site. The unmated drakes and last year's fledgling are all back on the ponds. We have about seventy birds on the site. We have a small number of gulls but many seabirds

JC ELECTRICAL

Your complete 24 hour Electrical Service

**Rewires • New Build • Lighting •
Showers • Extra Sockets • Heating**

City & Guilds Qualified (Tests to BS7671)

Part P registered

Prompt and reliable friendly service

Free estimates and all work guaranteed

Office: 01736 754543

Mobile: 07739 577549



Registered through: NAPIT

have been lost because of the Bird Flu.

The Turtles are much in evidence on the outer Pond, but we need to provide them with a new basking log so that they can sunbathe again. We also have a new golden Carp, the first one we are seeing regularly since we lost Gulliver last year. We hope he will have a long and happy life like his predecessor and become as much of a personality as Gulliver was.

I would like to thank everybody for keeping the ponds and the Rope Walk clean and tidy and respecting its importance as an historic asset to Hayle.

We would also like to pass our respects to his Majesty King Charles 3rd. As the Duke of Cornwall he showed a great interest in the life of the Harveys and the Hayle Foundry, May he be blessed with good health and a long reign. God save the King!

Georgina Schofield
Volunteer Wildlife Warden

Letter

I have just received your letter informing me that I am the winner of the TREES quiz. What a lovely

surprise, thank you so much. I really enjoy reading the Pump as do many of my friends, it is very informative and interesting. Thank you once again.

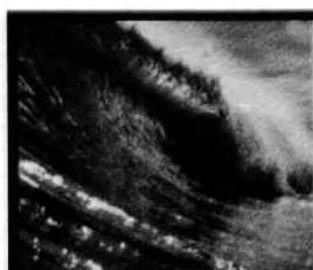
Yours sincerely,
Beryl Stevens



children's hospice
SOUTH WEST

MEMBERS OF THE HAYLE FRIENDS GROUP CHSW LITTLE HARBOUR, ANN AND TONY DONALSON WOULD LIKE TO THANK ALL THOSE WHO SUPPORTED THE CREAM TEA HELD ON 3RD SEPTEMBER AT THEIR HOME. THEY RAISED IN EXCESS OF £310.

This money will be used to help the continuing very necessary work at Little Harbour which is Cornwall's Children's Hospice. At Little Harbour very sick children and their families visit to help with respite care, emergency care and end of life care. The staff help through all these situations by giving every member of the family time to share precious moments together without the day to

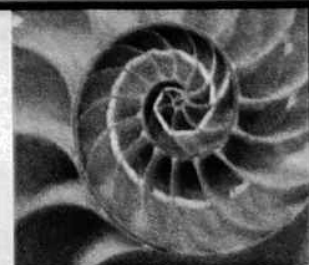


THE COPPERHOUSE CLINIC

5 Market Square, Hayle, Cornwall. TR27 4EA

01736 757524

www.thecopperhouseclinic.co.uk



GAIT ANALYSIS
LOWER LIMB BIOMECHANICS
LAB MADE PRESCRIPTION
ORTHOTICS
HCPC REGISTERED

CHIROPRACTIC
GCC REGISTERED

CHIROPODY & PODIATRY
LASER TREATMENTS
HCPC REGISTERED

day routine of medication and medical care. The staff are there to do that. The sick child is given time to have as much fun as can be fitted in and to achieve the most they can. Parents are given time to rest and recoup their energy. Siblings are given the support they need whether it is to have time to have fun or time to talk to someone who understands the difficulties of being a sibling to a very sick child. So, we thank everyone for their support in helping keep this wonderful facility working in Cornwall.

*Mary Trevarthen, Coordinator,
Hayle Friends CHSW Friends Group.*

**A BEACON FOR
SUPPORT, FUN AND
FRIENDSHIP** We are

for people with memory problems,



their families and carers. We dance, we sing. We make things, we share things. We do quizzes, we do puzzles. We talk, we drink tea and eat cakes. We are always there. We share. We care. But, best of all, we are free. (But donations are always welcome)

Dates for 2022

16th November 7 20th December 5th
and 19th From 2.00pm to 4.00pm
at Hayle Rugby Club Memorial
Park Marsh Lane Hayle TR27 4PS
For more information contact us on:
07513 221 066

**VOLUNTEER AMBASSADORS
ACROSS CORNWALL NEEDED**

Citizens Advice Cornwall is appealing for people to come forward as volunteers to not only help with

Mr. B's

Famously Fresh Ice Cream

- Coffee & other hot drinks
- Traditional ice cream desserts
- Healthy salads
- Fudge - Buy 3 bars and get a 4th one free!!

Eat in or take away
(subject to Covid restrictions)

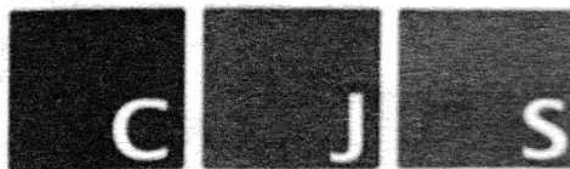
OPEN DAILY

Fore Street, Copperhouse
Penpol Terrace, Foundry

📍 [mrbsicecream](#)
📱 [mr_bs_ice_cream](#)
Tel: 01736 757925



www.mrbsicecream.co.uk



**Specialist Building
Surveyors**

- Asbestos Surveys
- Buildings Surveys
- Damp Diagnosis
- Fire Risk Assessments
- Timber Decay
- Mundic Testing

Craig J Shepherd

BSc(hons) Building Surveying, CSRT

01736 752012

07890 528 312

info@cjshepherd.com

www.cjshepherd.com

providing advice and support, but to also help with fundraising and raising awareness. Like many charities, Citizens Advice Cornwall relies heavily on volunteers to be able to continue its work. As the cost of living and energy crisis deepens, the demand for the charities services across the county is increasing. Fundraising Ambassadors are needed for a variety of roles including organising and attending fundraising events, talking to groups and organisations, organising collection tins etc. Opportunities are also available for volunteer advisors and administrators.

Last year, Citizens Advice Cornwall helped more than 9,000 people with almost 40,000 issues, write-off debt worth a total of over £1 million and gain income worth more than £8.1

million. It costs Citizens Advice Cornwall around £1.5m to run the service each year, a figure that is set to rise as the need for help increases.

Community Fundraising Manager, Tamsin Chapman-Gunner, said:

“As a charity our entire service relies heavily on our amazing volunteers and fundraising is no different. Fundraising is important to any charity and there are lots of opportunities for people to be able to help. No experience is necessary just a passion for the charity as full training will be given.”

Citizens Advice Cornwall provides free, independent and confidential advice on a wide range of subjects for everyone in the community, including benefits, debt, housing, relationship issues, employment and redundancy, consumer, legal issues and more.

WEST CORNWALL *plastics*

We are delighted to announce our recent award of the Which Trusted Trader Scheme. We have been inspected by Which magazine and Ultraframe, the leading manufacturer of conservatory roof solutions, and passed with flying colours.

As well as carrying a wide range of PVC building products in our warehouse, our installation teams carry out work to the highest standard, giving you the peace of mind that comes with using a Which Trusted Trader.

I would like to thank the readers of Hayle Pump magazine for their continued support, as we serve the people of Hayle and beyond with the best PVC and Aluminum building products

Thank you
Nick and the WCPL team

*West*COAT



- QUALITY SERVICE
- QUALITY INSTALLATION
- QUALITY PRODUCTS

INFO@WCPL.CO.UK
01736 759444
@WestCornwallPlastics



CERTASS

Little Plumbing Jobs

*"No job too small
just gimme me a call"*

07779 157157

Simon Miller



A

stalwart of Hayle life for many years, Pratt's Market, was owned by the Pratt family and where Army Surplus was sold alongside second hand mattresses.

This evolved over time to become separate shop units not unlike its current form.

For some years the business was taken over by an Equity company and even survived a considerable fire. The current owners took over nearly 10

To find out more about fundraising please email tamsin@citizensadvicecornwall.org.uk
To apply to become a volunteer please email recruitment@citizensadvicecornwall.org.uk

Cabinetmakers & Joiners

JOHN ANDREWS

Windows, Doors & Staircases constructed in soft wood and hardwood.

Entrance gates

Fitted Furniture.

Restoration & repair work including Boxframe windows.

Sash cords. Free estimates .

email:

johnandrews123@btinternet.com

www.johnandrewsjoinery.co.uk

Mob 07765 341616

tel 01736 755423

Des Button

Electrical Services & Supplies

Rewiring,

Fitting Consumer Units,

Sockets & Switches

Emergency callouts.

For Free Estimates &

Friendly

Advice

Call

01736

753211



years ago and have since begun a major reinvestment into the building (no more leaky roofs). They also instituted a new name **THE OLD FOUNDRY CHAPEL**.

Whilst some tenants have been here longer than the name change; others have come and gone but I doubt the building has had more than its current nineteen – a diverse range of businesses offering a wide selection of goods and services.

. On the ground floor **ULA** clothing and Lifestyle company **MAKERS BOUTIQUE** selling haberdashery and hand made goods, **KENSEI REFILL & ECO** refill food Store, a new **KERNOW SPA** with locally sourced candles and body products, the ever popular **BROTHER WOLF**

SUPPORT LOCAL BUSINESS



HYDRO BATH **BLOW DRY**
BRUSHING **NAIL CARE**
EAR/EYE CARE **FLEA TREATMENT**
DEODORIZE **CLIPPING.**

ALL NATURAL PRODUCTS.

PH 07903 042950

Lesley 01736 850971

E-mail lesleyandkeith@msn.com

City of Guilds Trained

Charity Shop, another new business at **RAINBOW BEAUTIFUL** body clinic, **RoCha** hair and Studio, and finally **BEAUTIFUL U.** beauty clinic.

Upstairs things diversify even more. **HEATHER Dyer's Framing** service and Antique centre, **KIM POTTER**

ART inspired by the sea, **THE CORNISH BOOKWORM** selling

books of local interest and more.,

MABEL ME selling and making handmade candles in celebration of

earth's botanicals, new business

SANDRA STEVENS FINE ART

STUDIOS, why not have a class ?

REMEMBER THIS selling Tools,

garden ware plus. And new this year

ONE DAY .. ANTIQUES, collectable

and militaria. If all this has made you

hungry don't forget the renowned

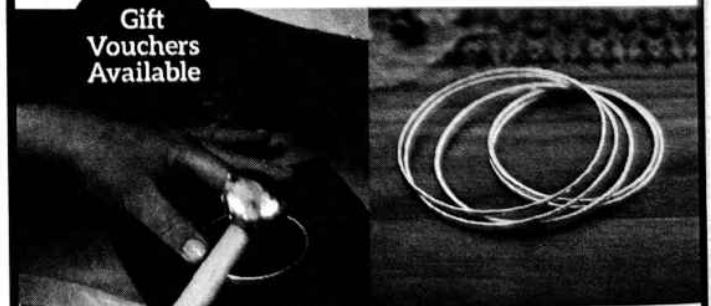
FEED STREET FOOD CAFE (there

are tables inside to escape the

Brett & Leni
 HANDCRAFTED JEWELLERY

Make your own perfect gift at our
 jewellery making workshops

Gift
 Vouchers
 Available



We offer one-to-one, parent and child or small group bookings. All materials and tools provided. Covid-19 safety measures in place.

To book your workshop session contact us:

Tel: 0757 077 4332 E: sales@brettandleni.com

Shop online: www.brettandleni.com

Unit 6, West Stables, Foundry Lane, Hayle

elements. situated opposite **KROG DEN SURF SHOP** both framing the entrance to the building. Lastly, if I dare say it, CHRISTMAS is around the corner! Please don't forget to support your local shops and services!

I had a date last night and really enjoyed it. Tonight I think I'll have a fig.

St Erth Weekly Village Activities



St Erth Concert Band
Tuesdays Methodist Hall

Sylvia Yarwood 01736 752605

St Erth Brownies

Mondays St Erth Church Hall (Old School) Julie Wass 01736 762123

St Erth Guides

Tuesdays St Erth Church Hall (Old School) Caroline Barton 07881 715764.

St Erth Nursery

Monday to Friday
Enquires 01736 755690

ST EARTH FILM CLUB

Saturday 15 October, Operation Mincemeat.

It's 1943. The Allies are determined to break Hitler's grip on occupied Europe and plan an all-out assault on Sicily; but they face an impossible challenge how to protect a massive invasion force from potential massacre.



The Mad Hatter

Bed and Breakfast Open all Year!
Rooms overlooking Copperhouse Pool.

Full English breakfast.

Competitive rates.

*Relax with a Scrumptious Cream
Tea or Homemade Cake in the
Café or Tea garden.*

Open 10am-4pm
Monday to Sunday.
Closed Tuesdays.

73 Fore St Hayle TR27 4DX
01736 754241 07871 165 381

www.cornwall-online.co.uk/madhatter

paulinemadhatterbandb@outlook.com

Dogs welcome

Newell's TRAVEL

Independent and well connected

Newell's TRAVEL
CRUISE SHOW
SUNDAY 16 OCTOBER TRURO COLLEGE

CRUISING from FALMOUTH

in 2023

Contact us for more details
49 Fore Street, Copperhouse
HAYLE

hayle@newellstravel.co.uk
www.newellstravel.co.uk

**Tel: 01736
757800**



Saturday 19 November: Film to be selected by those attending a film night.

Doors: 7.00pm Film: 7.30pm.
Membership cost £6.00 which includes entry, then it costs just £3.00 per film.

Contact Joyce Darvell 01736 757169

FARMERS' MARKET

Every Saturday in the Methodist Hall from 10.00am – Noon.

Typical week would include: Fresh local vegetables, free range eggs, locally produced organic beef, pork, sausages and bacon, artisan bread, honey, home-made quiches, flowers, cards and craft.

Every week a different village organisation supplies the refreshments. Tea or coffee only 50p.

Cakes normally 50p to £1. All welcome.

ST EARTH CHURCH SERVICES

Most Sunday services; 9.30am, Parish Eucharist.

WHAT'S ON AT ST EARTH METHODIST CHURCH

Sunday services 11.00am

The Chapel Hall is available for parties, meetings etc. Please contact Viv Hocking on 01736 740345

For regular events go to www.sterthmethodists.co.uk

ST EARTH PARISH COUNCIL

St Earth Parish Council normally meets on the first Tuesday of the month, starting with community participation at 7pm.

Any questions or comments for the Parish Council may be addressed to the parish clerk, 25 Fore Street,

YOUR OLD TAPES ONTO CD



YOUR OLD CASSETTE, REEL TO REEL TAPES OR 33/45/78 RPM RECORDS ALL SAFELY TRANSFERRED ONTO CD

Your precious memories saved forever. Your own photos, information & dedications can be included on the CD/DVD cover.

Also now: old VHS video tapes & photos all onto DVD.

Digital Recording for Singers & Musicians, Songwriters, Poets, Story Tellers, etc.

Also Musical Backing Tracks provided.

Contact Steve Nunn. 01209 719 481
www.cornmillstudio.co.uk
Email: cornmillstudio@aol.com

Julia Woodhams

MAR: MIGHT: MBRCP

COMPLEMENTARY THERAPY PRACTITIONER

Aromatherapy, Reflexology, Reiki Healing, Indian Head Massage, Hot Stone Massage and Aromatherapy Facials with organic oils.

For appointment or enquiries

Ph: 07960 181497
01736 603397

Email: roo61@hotmail.co.uk

Gift Vouchers available.



01736 757575, e-mail: clerk@sterth-pc.gov.uk. Or visit the website www.st-erth-pc.gov.uk.

EXERCISE FOR THE OVER 50'S

A regular exercise class takes place every Monday in St Erth Church Hall (Old School) from 10am to 11am and 11am to 12pm and Friday Morning 8am to 9am.

This is suitable for all fitness levels. Contact Claire 0779 204 6151 for details.

ST EARTH MEET & EAT

Meet and Eat restarts at St Erth Church Hall on Thursday 6 October, 12 for 12:30pm. Menu: beef or vegetarian lasagne (please let us know if you want vegetarian), salad and bread, followed by apple crumble and custard or cheese and biscuits, tea or coffee. The cost is £7. To book

a place please contact Barbara Read; barbararead21@yahoo.com, 01736 758233 by Monday 3 October.

Thursday November 3. Menu to be advised nearer the time.

ST EARTH ART GROUP

Weekly from 2 to 4.30pm. St Erth Church Hall (Old School).

Watercolour, acrylic, pastels, drawings etc. All welcome including beginners. No 'tutoring, but help on hand if needed!

Please bring your own paper / paints etc. There will be a small charge to cover the room hire. Please phone Sue 07807 445773 or Paul 01736 752375 for further information.

CHILDREN'S CLOTHES

Children's clothes in the Chapel on Saturday from 10-12 noon. Do come

Dreckley's Waste

Collection

House Clearance &

Deliveries

No job too small

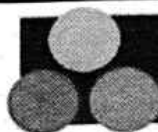
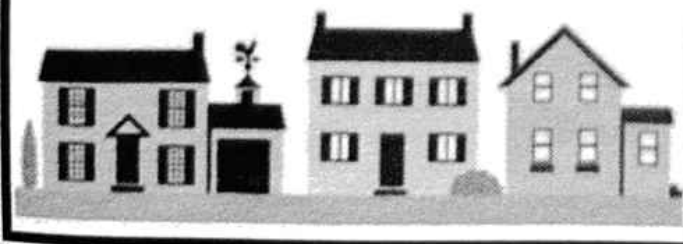
Garages, Houses, Sheds, &
Gardens cleared.

Fully registered & insured.

Honest reliable friendly
service.

Call Suzanne on 07877 325404

Email: dellamuro@btinternet.com



CVC
Solicitors

Confidence to Care for all your Legal Needs!

We offer advice on the following:

Business & Employment, Conveyancing & Property Matters, (including Commercial), Family & Children, Civil Litigation & Personal Injury, Wills and Inheritance Tax, Lasting Powers of Attorney, Probate & Estate Administration, Elderly Client and Care Home Fees.

We have offices in **HAYLE,**
PENZANCE and **ST IVES**

We can also undertake home
appointments in Hayle by arrangement.
Please call us to make an appointment on:

01736 362362 or

email: enquiries@cvc-solicitors.co.uk
or see our website:

www.cvc-solicitors.co.uk

and either take some clothes for your children, or bring good clean clothes your children have out grown .

Outgrown school uniforms welcome.

ST ERTH SEWERS CRAFT GROUP

Meets second Thursday of the month at St Erth Church Hall (Old School) from 2pm to 4pm. New members welcome. Contact Rose Evans 01736 754681 for more information.

GWEL TRENCROM SINGERS

This award-winning mixed choir meets at St Erth Church Hall on Saturdays at 10.30am.

To book us or to join (experienced singers only, please) contact Peter Luing on pluing@tiscali.co.uk, or ring 01736 754225

The St Erth Church Hall (Old School) is available to hire. It is ideal for community activities, private parties,

wedding receptions etc. Please contact Jill Sharpless 01736 756896 for more information.

For more up to date information regarding current events in St Erth, visit the St Erth web site at www.st-erth.co.uk

HAYLE FAKE NEWS ITEMS. (OR WOULDN'T IT BE NICE IF IT WERE TRUE!)

The developers of North Quay announce after the completion of current half finished work they will cancel plans for any further development and sand removal.

Cornwall Council decide that in an attempt to boost the local economy all parking charges will be scrapped.



TP Wills & Probate.

Wills and Estate Planning Consultant.

"Where there is a will there is a way to protect your family"

*** WILLS * TRUSTS**

*** ADVICE FOR SENIOR CITIZENS**

*** POWER OF ATTORNEY**

*** PROBATE ADVICE**

*** CARE FEE PROTECTION**

Call Tim Poole

01736 758418 or

07900 323939



Institute of
Professional
Willwriters



APPROVED CODE
TRADING STANDARDS

Ace Valeting

A friendly and professional
mobile car valeting service

**Full, Exterior, Interior Valets
and Maintenance Valets**

**Machine Shampooing Of
Car Upholstery & Carpets
Wax, Sealant, Hand Polish**

07919890662

acevaletingpz@gmail.com

Find us on Facebook: Ace Valeting

The Council also extends the ban on cars using King George's Walk to seven days a week.

The Department of Transport bans all Heavy Goods Vehicles from passing through Hayle in transit.

GWR proposes that Hayle station will have a ticket office and the same number of trains calling as St. Erth.

First Bus proclaim a bold new initiative in which buses will arrive and depart in some proximity to the times shown on Timetables.

Waitrose are pleased to unveil plans for their new store to be built on the site of a demolished retail outlet on Copper Terrace.

Dream On! Soothsayer

A TRIBUTE POEM TO KING CHARLES III

A soft hush whispered
And travelled on the breeze
To people animals
Plants and trees
Of a dignified Monarch
Respected departed
A nation in mourning
Broken hearted
A history of time
A calm in a storm
A new King in place
Heavenly born
Ahead of his time
A new inspiration
God save the King
And God bless our Nation.

Sent in by Pauline Christina Knight

TJ'S CARPETS LTD.



**New Showroom at Tolroy Garage,
58 Mellanear Road, Hayle TR27 6HF**

Come and see our wide selection of carpets & vinyls,
laminates and patterns

Our famous home selection service still available

Full range of flooring accessories

Call Now! 01736 757540 or 07976 608215

Free measuring & estimate service

"Before You Buy, Give Us A Try"

Hidden Words Quiz

164 All sorts of Games

(An oldie from Cleverclogs archive.)

1. Look at Dobbin –going round and round in circles.
2. She sneezed delicately. “Atishoo” placing her hand over her mouth.
3. They’re holding a secret ballot to elect a new leader.
4. I liked to watch Rawhide and see Knight Rider in action.
5. That ageing rock band Status Quo, it seems, is still going..
6. If he loses he’ll show his true colours.
7. She spoke rather loudly, everyone in the room heard her.
8. Get a grip—you’re losing the game.
9. You sing, I’ll just strum my guitar.
10. Even now, you can see how often Nissen huts are still used.
11. Trust you to select a rotten apple.
12. The hippo lowered his head and charged right at us.
13. Now I guess you can lick out

the bowl, sweet and sticky stuff.

14. That ruthless Napoleon was the scourge of Europe.
15. Do I see a curl in Granny’s hair? She’s getting younger!

Answers to Cats quiz in last issue

1.Rex 2. Alley 3.Mouser 4.Manx
5.Lion 6.Persian 7. Leopard
8.Bobcat 9.Civet 10. Tom 11.
Angora 12.Panther 13. Cheetah

The winner was
Mrs C. Spencer

To win a prize of £20 please send your answers by **13th November 2022** along with your contact details to editor@haylepump.org.uk or use



Club Listings

Bodriggy Mental Health Group Wed 1-4 p.m., Day Care Centre Annexe

Bridge Club Every Mon. Carbis Bay Memorial Hall 2-5 pm £2 inc. tea & biscuits. Enq: Graham 01736 762512

Cornish Crochet Corner first Friday of each month 2pm-4pm at Cornish Arms No experience required. 01736 753237

Cornwall Scale Modellers 2nd Wed each month Hayle Day Care Centre 7-10pm friendly club, talks & display current models, tea, coffee, biks £2.30

Fun Bingo 2nd wed of the month 7pm Connor Downs W.I. Hall Rosemary Smith 07817 078520
roandrod@hotmail.com

Hayle in Bloom. Last Mon. of the month, (not Aug & Dec) Passmore Edwards Institute 7pm.
Www.hayleinloom.com

Hayle Amateur Dramatic Society meet in Hayle Day Care Centre Mon evenings 7.30—9.30. Call Ken on 07733 156530

Hayle Breezers Group Thursdays. 1.30pm Passmore Edwards Inst. April Hogarth 0781 376 7071, Bob Scales 01736 751735

Hayle Art Society Passmore Edwards Institute on Tues 1.30-3.30 & Wed 7.00-9.00 tel. Chris 01736 757720 or Penny 01736 756445

Hayle Christmas Lights last Thurs of every month (except Dec,) 7pm at Hayle Day Care Centre Annexe New volunteers are always welcome.
haylechristmaslights@gmail.com

Hayle Amateur Dramatics Society Meet in Hayle Day Centre Monday evenings from 7.30 to 9.30pm. Call Ken on 07733 156530

Hayle & District Bowling Club. 1.00pm every Wed Short Mat bowling indoors in winter 07766 662 908

Hayle Film Club. Films shown at 7.30 p.m. at Passmore Edwards Institute. Donna 01736 753184.
www.haylefilmclub.org.uk

Hayle Friends Group for CHSW Hospice meets informally once a month under the chairmanship of Mary Trevarthen 01736754342
trevarthenmv@uwvclub.net

Hayle Harbour Users Association 1st Mon, of each month, 7.30pm. Royal Standard Pub R Lello 01736 757632

Hayle Judo Kwai Unit 7 Rospeath Industrial Estate, Crowlas. Tues & Thurs. Sensei Richard 01736 740723 or Karen Deacon 0779 209 9979

Hayle Library Reading Group. 2.p.m first Wed. of each month .

Hayle & District Lions Club. 2nd Tuesday of every month, 7.30pm at Passmore Edwards Inst. Secretary Yvonne Watson 01736 741375
yvonnemystique@hotmail.com

Hayle Lawn Tennis All ages and abilities welcome. Tremeadow Terrace, Hayle 01736 850843
www.haylelawntennisclub.co.uk

Hayle Local Vocalz Mondays 7.30pm, Hayle Methodist Church pluing@tiscali.co.uk 754225

Hayle Memory Café 1st & 3rd Mondays 2-4pm at Hayle Rugby Club Christine 07513 221066

Hayle Model Boat Club. Weds. 7-9pm & Sunday mornings 10-12 noon, meeting at green chalet by Hayle swimming pool. 01736 755516, or Les on 01736 754254

Hayle Meanderers Every Wed. 10.30am Commercial Road car park. Free, + contribution to carshare. Eddie Downing 01736 364673

Hayle Old Cornwall Society. First Friday of each month. Oct, to May at Hayle Day Care Centre 7.30p.m. Trevor Smitheram 01736 756793

Hayle Nutty Knitters Thursday 1pm

at Cornish Arms 01736 762418

Hayle Penwith U3A at Hayle Day Care Centre, Chair Mike Stuckey 01736 697771 u3asites.org.uk/hayle/home

Hayle Pilot Gig Rowing Club. .
Rowing out of Hayle Harbour most Tuesdays and Thursday evenings
chair@haylegigclub.co.uk

Hayle Probus Club White Hart Hotel
2nd Thurs of the month for lunch 1p.m.

Hayle Railway Modelling Club Club Room. Unit 5, Praze Business Park. Praze-an-Beeble. Mon & Thurs 7pm
Martin Scance 0797 7550051
www.haylerail.co.uk

Hayle RNLI meets from March to November at 7.00pm the 2nd Wed. of the month at Unit 5 Hayle Industrial Park. Tel 01736 753567

Hayle Surf Life Saving Club Riviere Towans Hayle TR27 5AF Captain: Dave Parker 01736 755303

Heyl St Piran Singers Every Wednesday at St Erth Old School Room 7.00pm to 9.00 pm; Tel Carol Renton 01736 753496 or Ann Thomson 07766128889

Hayle Twinning Association
Communicating on zoom during the Covid crisis. Contact George Daniel 01736 333236 or email penelope.young@btinternet.com

Heyl Town Band Rehearsals Tues & Thurs 7:30pm-9:30pm, Juniors on Thursdays 6:pm-7:00pm

Macmillan Cancer Support
Meet at Three Trees, 16 Penmare Terrace, Hayle on most Thursdays at 7.30pm Suzanne Benney 01736 753635

One & All Choir (mixed) Tuesdays 2.30pm to 4.30pm at St. Erth Old School Room. £2 a session Contact Ann Thomson 07766 128889

Penwith Guild of Weavers Spinners & Dyers 3rd Sun of mth (not March) 1-5pm Passmore Edwards Institute

01736 762418

Phillack Tower Bellingring every Tuesday at 7.30pm - Tina Morgan 01736 756567

Phoenix Singers Tues 7.30—9.30 Hayle Day Care Centre Mrs T Cook 797708

Royal British Legion Passmore Edwards Institute. Every Mon. Wed. & Friday evening and Sat. afternoon. Mr Alan Conquest 07470 308400

Save Our Sand For date and venue of meeting, sos-hayle.org.uk, or Facebook. To go on our mailing list contact saveoursand@talktalk.net

Scrabble Club at Connor Downs 2nd Thurs each month at W.I.Hall. 2-4pm £2 for hall & refreshments .

carolinewindsor123@btinternet.com

Shore Surf Ladies Only & Juniors

Surf Club All abilities welcome. Every Saturday 9 – 11am. 01736 755556 Beachline 07855 755556
info@shoresurf.com

St Erth Concert Band Rehearsals Tues.7.30 to 9.30pm in Methodist Ch. Hall enquiries 0739 4617127

St Ives Camera Club Monday 7.30pm at St Anta Church Hall, Carbis Bay stivescameraclub.co.uk

St Ives and Hayle Community Choir Tuesdays 1.30pm to 3.00pm at St Anta Church Hall, Carbis Bay 07446 492266

Table Tennis for Fun every Friday 2pm - 5pm Leedstown Village Hall. Info: Robert 01736 753951

West Cornwall Concert Band Monday 7-9pm at Camborne Wesley Church – email Becky Lovegrove at westcornwallconcertband@gmail.com
W.I. Hayle 1st Tuesday of the month, 7.00 pm in Esme Jelbert Room at Passmore Edwards Institute Margaret Stockton 01736 756007

Phillack Church Hall bookings, Tel:Tracey Worrall 07490 691120

- | | | |
|-------------------------|----------------------------------|-------------------------|
| 2 1st Choice Paving | 7 Farm Shop | 16 Proper Greek |
| 10 A. McDonald | 12 Flowertime | 14 Property Maintenance |
| 16 All Aerials | 8 Gallery Cafe | 19 Saints Funeral |
| 22 Andrew's Dance Class | 17 Hayle Cycles | 18 Shiatsu |
| 26 Angove Sports | 4 Hayle Day Care | 8 Sweet Williams |
| 13 Big Pink Tree | 20 Hearing Services | 4 Sylvia's Exercise |
| 28 Biz and Bytes | 13 Jake's Mobile | 11 T. Hosking Roofing |
| 3 Blewetts | 29 J C Electrical | 25 Thurstan Hoskin |
| 34 Brett & Leni | 33 John Andrews | 39 T J Carpets |
| 26 Bush Monkey | 36 Julia Woodhams | 38 T P Wills |
| 23 Cafe Riviere | 3 Kim Hopkins | 13 Transformations |
| 14 Castaways | 6 Lewy's Fish & Chips | 9 Webb & Philp |
| 27 Chimney Sweep | 32 Little Plumbing Jobs | 32 W. Cornwall Plastics |
| 31 CJS (Craig Shepherd) | 35 Mad Hatter | 43 Winns Funeral |
| 15 Cliffords Plumbing | 25 Malt Decorators | |
| 30 Copperhouse Clinic | 27 MJ Waste | |
| 18 Cornish Arms | 12 Mobile Foot Clinic | |
| 36 Cornmill Studio | 22 Mike Thornton | |
| 37 CVC Solicitors | 24 M W Carpentry | |
| 34 Dapper Dogs | 31-6 Mr B's | |
| 20 Dave Thomson | 28 One Day Antiques | |
| 24 David N'jie | 21 Passmore Edwards | |
| 33 Des Button | 11 Paul Sherris | |
| 9 Direct Transport | 10 Plantech | |
| 37 Drecklys | 15 Philips pasties | |

Pick up points in bold.
Copperhouse PostOffice.
Warrens at Foundry,
McColls, Hampsons, Old
Foundry Chapel,
Spar, Farm Shop
Lewy's Fish and Chips



W J WINN FUNERAL DIRECTORS



We are here to help you 24 hours a day

- Funeral Pre-Payment Plans • Memorials • Private Chapels of Rest

WJ WINN

Trenwith Terrace
 St Ives TR26 1QE

Tel: 01736 793029

WJ WINN

69 Fore Street
 Hayle TR27 4DX

Tel: 01736 752124

CHARLES BRYANT & MARAZION FUNERAL SERVICE

North Road, Goldsithney, Cornwall TR20 9JY

Tel: 01736 710318



Part of Dignity plc. A British Company



Dignity
 CARING FUNERAL
 SERVICES

**CONNOR DOWNS RESIDENTS'
ASSOCIATION**

FUN BINGO

**Wednesdays, 12th October &
16th November @ 7.00 p.m.
Connor Downs W.I. Hall
ALL WELCOME**



**children's hospice
SOUTH WEST**

AUTUMN FAIR AT HAYLE RUGBY CLUB

ON 28th OCTOBER 2022 11.30AM – 3.30PM

LOTS OF STALLS: Cakes, books, art, woodcraft,
handmade goods and more.

TEA AND COFFEE AVAILABLE

FREE PARKING

SORRY - CASH SALES ONLY

**IF YOU WOULD LIKE TO BOOK A TABLE AT
THIS EVENT, COST £10,**

Please call Mary 01736 754342