

HAYLE PUMP NEWSLETTER

Well Done! St. Julia's Hospice



Cornwall's two adult hospices have received top class ratings from the Care Quality Commission (CQC). Mount Edgcombe Hospice in St Austell has been recognised as 'outstanding' and at St Julia's Hospice

Free! thanks to our volunteers and advertisers.

Hayle Pump Newsletter

Passmore Edwards Institute, 13-15 Hayle Terrace TR27 4BU

The Pump is produced by volunteers as a community newsletter.

NB All articles accepted are not necessarily the view of the editorial team.

View online at www.haylepump.org.uk

Editorial team contact

editor@haylepump.org.uk

Team Members

Stephen Murley (Editor)

Tina Morgan (Subscriptions)

John Cole (Distribution)

Jeff Turk (Advertising & Treasurer)

NEXT ISSUE

Apl/May 2023

Send any articles, copy and club listings to:

editor@haylepump.org.uk

or drop off at:

Angove Sports (Copperhouse

The Farm Shop (Foundry)

Passmore Edwards Institute

Subscriptions

Tina Morgan

Phone: 01736 756567

For 6 issues by post, please send a cheque or postal order for £4.40 made out to:

C.M. Morgan and send to
Tina Morgan, 29 Bodriggy Street, Hayle, TR27 4NB

Please give your telephone number as well as the delivery

Advertising / Treasurer

Jeff Turk

Phone: 01736 752319

Send your adverts to:

jeffandsarah@outlook.com

or use the drop off points.

Advertising Rates:

1/8	63 x 47.5	£10
1/4	63 x 95	£15
1/2	NA	

NEXT DEADLINE is

13th March 2023

The Hayle Pump would like to remind readers that items, or articles and Public Notices are accepted as points of view and are not necessarily the opinion of the Newsletter Team. Correspondents are reminded that all material submitted must be signed with their name and address, and if possible, telephone number for validation. This will not be printed if you don't wish it to be. We reserve the right to refuse or edit items sent to us.

Continued from front page:

Both hospices have recently experienced unannounced inspections from the CQC. The inspectors arrived at St Julia's first where they rated the services as 'good' and have today announced the result of their visit to Mount Edgcumbe Hospice, rating the care outstanding'. Gina Starnes is the Director of Clinical Services at Cornwall Hospice Care; "I'm absolutely delighted for both hospice teams who've worked so hard to ensure our wards are safe, welcoming and caring. Both hospices have the same policies, procedures and clinical governance but I'm told by the CQC that the inspector's reports are based on the findings on the day of their visit and the evidence shared with them at the time. For me it shows that we've made very positive moves since the last inspections and this is down to our hospice teams who continue to make a real difference".

Paul Brinsley is the Cornish healthcare charity's Chief Executive; "I'm proud of each and every person at our hospices and thank them all for their commitment and hard work. These inspections are never easy and demand a lot of additional hard work but the staff and volunteers at both Mount

Edgcumbe and St Julia's rose to the challenge and attracted amazing ratings as a result." Both hospices provide 24/7 end of life support for people with terminal illnesses and their families. Mount Edgcumbe Hospice was the first hospice in Cornwall and was opened in 1980. St Julia's Hospice started as a ward at the hospital in Hayle with the purpose built hospice opening in 1999.

Council Corner February and March 2023



New Councillors

The Council welcomed three new councillors, Tim Carey, Catherine Hayes and Vincent Tan, We extend a warm welcome to you all and look forward to working with you. Their contact details, along with all other councillors, can be found on our website.

Councillor John Pollard

All of us at Hayle Town Council are incredibly saddened by the sudden passing of Councillor John Pollard. John devoted his life to the service of his community whether it was as a teacher or in his work as a councillor for Hayle Town Council and as Leader of Cornwall Council. The list of John's accomplishments is extensive; from Chairing Harvey's

Foundry Trust and the Steering group of Hayle Area Plan Partnership to being a governor at Connor Downs Primary School and a Trustee of Hayle Pilot Gig Club. John's passion for the town, where he lived most of his life, provided him with the determination to see so many projects through to fruition and got him involved in a multitude of areas that are simply too numerable to list but demonstrate a love for Hayle and the people that live and work in the town. John served as a councillor for Hayle Town Council since 1982 including two years as Mayor. He also worked as a councillor for Cornwall Council between 2009 – 2021 where he was leader for 4 years. John's extensive knowledge and memory is something that could always be relied on when exploring

an issue or problem. His diplomacy and ability to have difficult conversations that cut straight to the heart of issues is something that we will sorely miss along with his wonderful sense of humour and dry wit.

Our thoughts are very much with John's wife and children along with his many friends at this terribly sad time.

T	Come to	O
	BLEWETTS TOY SHOP	
	19 Penpol Terrace, Hayle TR27 4BQ	
Y	01736 753012	S

Julia Woodhams
MAR: MIGHT: MBRCP
**COMPLEMENTARY
THERAPY PRACTITIONER**

Aromatherapy, Reflexology,
Reiki Healing, Indian Head
Massage, Swedish Massage
and Aromatherapy
Facials with organic
oils.

For appointment or
enquiries

**Ph: 07960 181497
01736 603397**
Email: roo61@hotmail.co.uk
Gift Vouchers available.

靈氣

THE FARM SHOP
31 Penpol Terrace, Hayle,
TR27 4BQ

Open Monday _ Saturday
8am—5pm

**FOR ALL YOUR LOCAL
PRODUCE**

Fruit, vegetables, plants, flowers,
free range eggs, and Cornish
potatoes

NOW IN

**Primroses, local Daffodils,
and Valentine Flowers**

King George V Memorial Walk

Comments were invited on a proposal to introduce a Prohibition of Motor Vehicles at all times (except for access) along the King George V Memorial Walk, from a point 100 metres east of its junction with North Quay to its junction with Black Road. The proposed restriction will replace the existing Prohibition of Motor Vehicles, which is only in effect on Sundays. These changes have been nominated by Hayle Town Council to improve the amenity for other road users, specifically modes of active travel.

The consultation ended early December and the results will be publicised in due course.

SUPPORT LOCAL BUSINESS



Move that Body to Music

Classes for 60s Plus

Classes held in a socially
distanced safe environment

**Thursdays at Hayle
Rugby Club at 10.30 am**

£5.00 a session

Phone Sylvia on
01736 757560
for more info

Hayle Community Action Group

At their most recent meeting, Hayle Community Action Group (formerly the Town Team) started to prioritise the projects that they wish to action in the long and short term. The group is open to everyone who lives and works in the town. Whether you're interested in improving the green spaces in the town or want to try and get a community café up and running, this group is open to ideas and wants to put things into action so why not come along to the next meeting at **Hayle Day Care Centre at 7pm on Wednesday 8th February.**

Calling all groups and organisations!

We want to find out what's happening in Hayle so that we can



**Kim's
Yoga and Pilates at
Lelant Village Hall**

**Every Monday
Yoga 8am
Pilates 9.30am &
11am**

**Carnhell Green Studio
Wednesday and Friday – Yoga
8am**

Sunday 10am

Sunday beginners slow flow yoga.
10am at Carnhell Green Studio £9
a class.

On-line and 1-1
classes also
available.

Contact Kim
07751552313



ensure that the community knows what's on offer in and around the town. If you run a club, group or organisation do get in touch via email to julie.baldwin@hayletowncouncil.net and let us know what you offer along with the most up to date contact details. Even if you think we have the correct information, please get in touch to confirm.

Hayle Market

Following the temporary closure of Phillack Church Hall, it was decided to temporarily pause the weekly market with the intention to relaunch in April.

Town Council Relocation Project

As reported previously, the Town Council proposes to relocate to the

library, to create a central administrative hub.

The building will continue to be the home of the library and information service but in addition will also become the administrative centre for all Council activities, including Council meetings. The meeting space will also be available for some community use, workshops and more interactive library sessions. The building will be brought into the 21st Century and will be almost carbon neutral, with the installation of air source pumps and solar panels. In the long term, the building will be sustainable and will ensure that the town council reaches its own climate change targets.

Planning permission, for the development and extension of the existing library building, was granted



Mr. B's
Famously Fresh Ice Cream

The only place you can get a delicious




POP Waffles

OPEN DAILY
Fore Street, Copperhouse
Penpol Terrace, Foundry

📍 [mrbsicecream](https://www.facebook.com/mrbsicecream)
📞 [mr_bs_ice_cream](https://www.facebook.com/mr_bs_ice_cream)
Tel: 01736 757925

www.mrbsicecream.co.uk



The Oldest Chippy in Hayle!
Opening hours

Sunday — Monday:	Closed
Tuesday:	4.30—8
Wednesday:	12-2 / 4.30—8
Thursday:	12-2 / 4.30—8
Friday:	12-2 / 4.30—8
Saturday:	12-2 / 4.30—8

We have a 5* Hygiene rating

See us on  @Lewy's Fish & Chips

01736 759381

48 Penpol Terr Hayle TR27 4BQ

in the summer of 2021 and following the positive feedback from the public exhibition, held in August 2021, the Town Council agreed to focus on and progress the project.

Since then, the council have been looking at the next steps and a public consultation took place to seek the community's views on the proposal as the move will have a financial impact on residents in the town.

In order to raise funds for the move, the council will sell Hayle Community Centre which will enable GP services in the town to be secured for the future as Bodriggy Surgery needs to expand to deliver for the whole community.

The project will need to be funded partly by the sale of the Community Centre and partly by a loan from the

Public Works Loans Board.

For those that may have missed the public consultation events, please see our website. The plans can be viewed on the Cornwall Council Planning Portal: PA21/05282

The results of the consultation will be shared in due course.

Council Activity

Hayle Business Week

In order to support the Hayle Business community, we are running a business week from 20th – 24th February. There will be a range of workshops, activities and opportunities to network suitable for all types of businesses, from those of you with lots of employees to those of you who run businesses from your kitchen. For more information take a

The Gallery Coffee Bar

Always welcoming and friendly



*You can sit in the
fresh air in our
lovely sunny
courtyard,*

or

*relax on a comfy sofa
with great coffee,
home-made cakes,
breakfast and light lunches.*



1 Chapel Terrace Hayle (by the
Viaduct) ...**See you soon**

07765 229 764

**Dogs (and well behaved owners)
are welcome**

Mike Thornton

**Plumbing & Heating
Services Breakdown,
Servicing & Repairs to all
makes of boilers**

01736 740965

07704 244 376

**mc.thornton8@btinternet
.com**



look at the Hayle Town Council website.

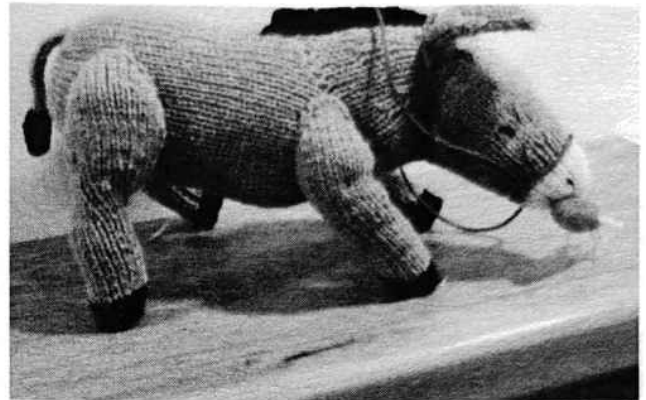
Business Database

If you would like to join our business network and be the first to hear about opportunities for your business then sign up to our mailing list: http://eepurl.com/ifx_Kj

Hayle Town Council
Hayle Community Centre
58 Queensway
Hayle
TR27 4NX
01736 755005
info@hayletowncouncil.net
www.hayletowncouncil.net
Office hours 9.30am – 12.30 p.m.

**SUPPORT LOCAL
BUSINESS**

BODRIGGY MENTAL HEALTH & WELFARE GROUP



The group had a lot of fun before Christmas making a nativity scene, with many laughs at the little donkey, named the Wonky Donkey. New members are always most welcome. Please contact Patsy Opie 01736 759685 or enquire at Bodriggy Surgery reception.

Sweet William Florist

**.....for the personal
touch.**

07928 100 6900

01736 740 644

www.sweetwilliams.com



Specialist Building Surveyors

Asbestos Surveys
Buildings Surveys
Damp Diagnosis
Fire Risk Assessments
Timber Decay
Mundic Testing

Craig J Shepherd

BSc(hons) Building Surveying, CSRT

01736 752012

07890 528 312

info@cjshepherd.com

www.cjshepherd.com



RELOCATION PUBLIC CONSULTATION

In August 2021, Hayle residents were consulted about the relocation of

Hayle Town Council to the town's library. The proposal received overwhelming support from the general public. Since then the council have been looking at the next steps and it's now time to ask the public what they think again as the move will have a financial impact on residents in the town.

The main reason for the move is to consolidate council staff and services as a community hub under one roof in a bid to make efficiency savings by running one modern building suitable for the needs of the council and users of the library instead of two unsustainable buildings.

The existing Library building would be extended upwards to create a whole new floor for HTC while the ground floor will be extended and reconfigured to allow for public toilets, including a much-needed accessible one and a new Council Chamber that will include more space to accommodate the public. This meeting/event space will also be hireable by the public for business meetings, events or as an exhibition space. Importantly the building will be retrofitted to proof it for the future, including triple glazing the windows, using sustainable pumps to heat the building and fitting with solar panels to provide energy. Mayor Anne-Marie Rance said, "Consolidating our services in one place will bring huge benefits to staff and more importantly the community. Not only will having all staff in one place lead to extended



18th edition
BS7671

Webb & Philp Ltd
electrical contractors



All aspects of Electrical work undertaken

**Free Estimates. No Job Too Small.
Prompt. Reliable. Fully Qualified. Est 1972**

- ✓ Re-Wires
- ✓ Security
- ✓ Showers
- ✓ New Build
- ✓ Testing
- ✓ Maintenance
- ✓ PAT Testing
- ✓ Extra Sockets & Lights

www.webbandphilp.co.uk

Tel/fax 01736 753651 Mobile: 07419 376882

Email: electricians@webbandphilpltd.co.uk

opening hours for the library, which is a well-utilised facility offering a range of services to the people of Hayle and surrounding villages, but it also means that the council and its staff will be more accessible by being in a more central location in the town."

In order to raise funds for the move, the council will sell Hayle Community Centre which will enable GP services in the town to be secured for the future as Bodriggy Surgery needs to expand to deliver for the whole community.

A survey is being distributed to enable people to have their say. An online version of the survey is also available here: <https://forms.office.com/e/FGqvxE0CAh>
Go to hayletowncouncil.net to access more information about the project.

For media enquiries contact:

The Town Clerk,
Hayle Community Centre,
58 Queensway,
Hayle,
TR27 4NX
Tel: 01736 755005
Email: info@hayletowncouncil.net

Do you know what really makes me smile? Facial muscles

Tarina

Mobile Hairdresser

City and Guilds NVQ level 3
30 years experience
Hayle and surrounding areas
01209 832945
tarinamobilehairdresser@gmail.com



PLANTECH GARDEN SERVICES

EST 2006

Lawns & Hedges Cut
Tree & Shrub
Pruning ,
Lawn Care

Treatment Services
Gardens Cleared

Free no obligation quotes

Mob: 07979 546434

Tel: 01736 754401

ALEXANDER McDONALD

Gutter clearing and fascia board cleaning. Painting, pressure washing, gardening services. Also Fencing and Fence repairs and all those little jobs you keep putting off. Free estimates.

Big enough to cope, but small enough to care!

Mob 07880 777 591

Home 01736 753102





Hayle
Twinning



Association in crisis

First the good news: we will be welcoming a group of Bretons to Hayle from Thursday 18 to Sunday 21 May this year. This is their first visit since pre-covid in 2019, so it will be a particularly joyful reunion. We are planning a range of activities culminating in a party on the Saturday night. Then late August/early September will see us paying a return visit to Brittany. These exchanges between Hayle and Pordic have been going on for 25 years. There has been plenty of fun, friendships have flourished, and we have learned about French food, wine and customs.

The bad news: this could be our last exchange. Most of the Hayle membership are getting on a bit, and are finding travel and hosting more taxing than in the past. Raising funds to pay for the activities we provide for our visitors is harder with less members. To survive, the Association needs more members, and in particular, younger members. Families with children are welcome,



MOUNTAIN - ROAD - BMX SPECIALIST

Bicycle Sales and Repairs

Tel: 01736 753825

36 Penpol Terrace, Hayle TR27 4BQ

www.haylecycles.com

Café Riviere

Across Hayle's Jubilee Bridge

Serving a variety of hot food, late breakfasts, drinks, ice-cream, cream teas and snacks.

- *Indoor and outdoor seating,*
- *Take-away is available,*
- *Open all year.*
- *Next to the public open-air swim pool, sub-tropical gardens, promenade and nature reserve.*

PAUL SHERRIS

Hayle's only
local family owned
**FUNERAL
DIRECTOR**

**Private Chapel of Rest
Pre-Payment Plans
available**

**West Terrace, Hayle.
TR27 4JS.**

01736 753969

Day or night

as indeed are people of all ages. You need to be willing to host a Breton person, couple or family, depending on your situation, for 3 days. Then you will be accommodated in return when we go to Brittany.

The AGM is on **Monday 13 February, 2pm** at Polgrean. The future of the association will be discussed, and a decision made at that meeting. Anybody reading this who has an interest in developing French contacts, or whose children are learning French and seeking low cost extra-curricular activities, need to come forward without delay, to ensure the Association continues.

Contact George Daniell (01736 333236) or
maureenmason2000@yahoo.co.uk

HAYLE IN BLOOM



A great big welcome to Spring which is just around the corner and Hayle in Bloom (H.I.B.) volunteers are once again endeavouring to make the town 'look good for Easter'. Preparations for this year are continuing at pace and colours for 2023 feature reds, oranges, yellows, and pinks with all plants having already been ordered. Important tasks for volunteers to complete before planting are the cleaning of tubs, towers and baskets as well as the preparation of soil and compost in most containers. Planting out has already commenced in some locations and this includes many

Fiona's Curtains and Blinds

I make affordable, made to measure Curtains, Roman Blinds and Soft Furnishings for your home.

I can also alter your existing curtains or repurpose fabric that you already have, to make blinds or cushion covers.

No job is too small!
Please ring or email to discuss

07425212093
fiollerton@gmail.com

WEST CORNWALL MOBILE FOOT CLINIC

For the professional treatment of:

Corns & Callus Diabetics
Verrucas Athletes Foot

Thickened Nails
Fungal Infections

Ingrowing Toe
Nails

Cut-trim Nails

All in the
comfort of your own home

Peter Williams

S.A.C.Dip FHPT/FHPP

07901 803493

Evening & weekend calls
available.

pwpetewilliams@googlemail.com



daffodils along Penpol Terrace. Our new storage unit has been mostly renovated by members and is looking 'splendid' as well as 'useful'. However, there is a small amount of welding needed to complete the project and if there is a reader out there who might volunteer their services that would be very welcome indeed! If you are able to help, then please contact Rich Barber 07485 560253.

NEWS FROM BODRIGGY ACADEMY Garden and Nature Club
 There will shortly be a meeting with the Academy to plan activities with the children for after half term in the gardens on King George V Walk. The Gardens comprise the Bug Mansion, the Woodland Walk (where Bingham Palace is located) and the Flower Garden with its wild

flowers and perennials. The Sensory Gardens are not, in fact, part of the Bodriggy gardens, but are an older W.I. development. I hope this has clarified things. Before Christmas, Olivia, the town gardener, tidied up the whole area and this has made a big difference. Now, crocuses, foxgloves, ferns, and primroses feature with many daffodils throughout. Apologies for the errors made in the last Pump by me as regards the awards achieved by the Academy pupils in last summer's South West In Bloom judging. Here are the corrections:
 Level 5 Outstanding Award;
 Nominated for Youth Award for Outstanding Achievement in Gardening;
 Nominated for the Clem Preece Cup
 Well done to all of you and to your

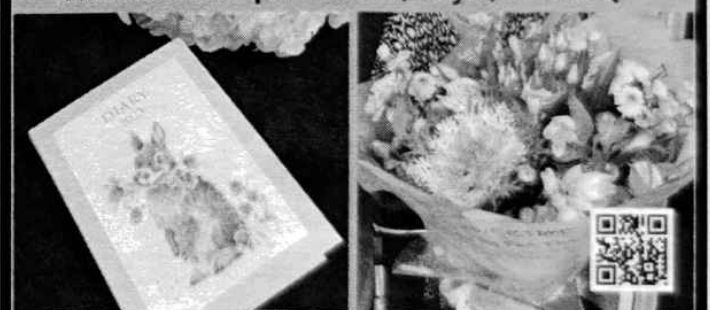
Transformations Cornwall

*Give your home a luxurious finish.
 Create the style you desire.
 Bespoke curtains, blinds and soft
 furnishings.
 Handmade to a high standard.
 Professional friendly service.*

*Elizabeth Gregg
 17 Penpol Road Hayle
 TR27 4AD*

*01736 752434
 elizabethmgregg@gmail.com
 Wwww.facebook.com/
 transformationsCornwall*

Find us on Penpol Terrace, Hayle, TR274BQ



THE BIG PINK TREE

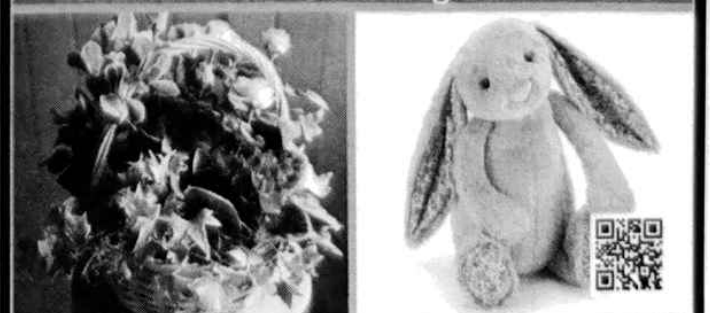
Your local Gift Store & Florist.

www.thebigpinktree.co.uk

www.wesendflowers.co.uk

01736 757006

Beautiful Flowers, Greeting Cards & Gifts



Find us on Penpol Terrace, Hayle, TR274BQ

Club Coordinator, Sandie Morgan.

As regards the main 2023 South West in Bloom competitions, all the entries have now been made and , as a reminder to everyone, last year we achieved gold standard overall and won the Preece Cup, competing against other towns of our size in the South West. This means that this year we are entered into the Champion of Champions Cup where the competition is a lot tougher but the rewards are also greater!

People in Hayle generally made a great response in 2022 to improve the environment in which we all live. If we all made even 1% extra effort this year to pick up litter, to put wrappers in bins, to improve our gardens if we have one, to reduce dog poos, to recycle plastics, the effect throughout Hayle, I think would

be noticeable.

Finally, some information about meetings:

all are welcome to our regular monthly meetings which continue on the last Monday of the month at 7.00pm. in the Passmore Edwards Institute (excepting Bank Holidays and AGM)

ADVANCE NOTICE GIVEN of our AGM to be held on MONDAY 27th FEBRUARY at 7.00 pm. in the PASSMORE EDWARDS INSTITUTE

All are very welcome. Refreshments will be available and, hopefully, there will be a guest speaker.

Any offers of help and/or suggestions or info about volunteering — please contact either of our co-chairs : Nigel (Tel. 07895 601978) or Richard (Tel. 07485 560253)

PROPERTY MAINTENANCE

Painting

Gardening

Fencing/Sheds.

Experienced and reliable

Competitive rates

Contact

Simon Wells

07709 926 595

01736 754408

simonwells1466@gmail.com



We are a Pre-loved Boutique selling an extensive range of quality label clothing, shoes and accessories. Buying and selling on commission is easy and we are on hand to book in your clothes, bags and accessories. Make money on your once cherished garments, it's so easy.

*1 Chapel Terrace Hayle TR27 4AB
(by the viaduct)*

07765 229 764





Hayle Amateur Dramatics Society is now well into rehearsals for its next production of "Snow White".

We meet every Monday at 7:30pm in the Hayle Day Care Centre, next to the library. Our membership is diverse with ages ranging from 8 to 84 and we are always happy for people to come along to see what we are doing, before deciding if you wish to join us. You can try treading the boards as part of the cast, or helping behind the scenes in various ways. All ages from 7 years upwards are welcome though we ask that children be accompanied by a parent/guardian at all times, (who are also welcome to join in the fun).

We are aiming to perform Snow

White this coming Easter with performances at the Hayle Day Centre:-

Friday. 7th April at 7.30
aturday 8th April at 2.30 and 7.30
Sat. 15th April at 2.30 and 7.30

If you would like to join us, or simply find out more about us, come along to our regular evening rehearsals, 7:30 – 9:30pm on Mondays in the Hayle Day Care Centre. Alternatively contact us at hads.hayle@gmail.com or phone Ken Townend on 07733 156530. Your first week is free and then membership is £2.50 per week (£1 for children).

The first ever diet came from a man in the Bible.. It says. He who shall cast the first stone..!

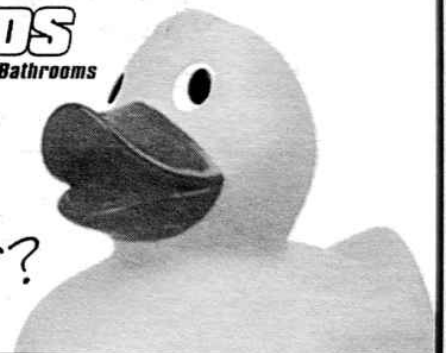


Order our Famous Cornish Pasties online to be delivered to your door at www.philpspasties.co.uk

Hayle East Quay 01736 755661
Hayle Foundry Hill 01736 753302
Marazion 01736 710332
Praze-an-Beeble 01209 831360



Need a
Plumber?



From a dripping tap to a complete bathroom

We have a new phone number

01736 752955

07761938183

cliffords4@btinternet.com

 Cliffords plumbing and bathrooms





**Hayle
Christmas
Lights – your
help is needed.**

We hope you will agree that the light display around town at Christmas was again really good this year. The display by Hayle Christmas Lights was greatly enhanced by the many lights added by Hayle Town Council, businesses and individuals throughout the town and especially along the main thoroughfare. We would like to thank all those that helped in putting up their own displays and would also like to give a great big thank you to the small band of people who helped put up our lights including Barry, Chris,

Colin, David, Keith, Patrick, Penny, Rob Sr & Rob Jr.

The switch on event on the 26th November was extremely well attended and was made really colourful and vibrant by the townsfolk who came along to the Lantern Parade organised by Hayle Carnival Committee. We would like to thank the Carnival Committee for their efforts and also to the choir from Bodriggy Academy and to Hayle Town Band for their choral and orchestral support. We would also like to thank the mayor of Hayle, Anne-Marie Rance, for switching on this season's Christmas lights.

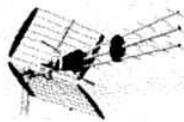
Like most people we are now waiting with apprehension our electricity bill and here we would like to say a big thank you to the

ALL AERIALS

TV Aerial & Satellite TV Specialists.

digital

Registered Digital
Installer



25 Years Experience

For all aspects of Tv Aerials,
Satellite Systems Fixed &
Motorised, Installations &
Repairs

Free Friendly Expert Advice By
Local Engineer.

Tel : 01736 759225

Mobile : 07979503907

Email. jonathan@allaerials.co.uk



HAYLE DAY CARE CENTRE **Commercial Road, Hayle**

An affordable day care facility for the
elderly of Hayle, St Ives and district

Transport • Freshly cooked meals

Also includes bathing and hairdressing
Therapy and lively social interaction

Always a friendly welcome

Call 01736 755000

businesses, individuals and all at Hayle Town Council and our local County Councillors who have donated to the lights, either financially or in giving their time and goods. Without this support we would not be able to function or pay our electricity bill.

Now the Christmas lights have been switched off and, although it may seem early, work will start for Christmas 2023. The lights will be sorted out, checked over to see how they have fared through the rigours of the winter weather and, if required, repaired or replaced ready for next season. The infrastructure will be checked to ensure it is fit for use and we will start to plan what changes and improvements are needed for December 2023.

To help plan for next year we will

continue to meet on the last Thursday of each month at 7pm in the annex of the Hayle Day Care Centre. Many of the present team are looking to reduce their commitment as age creeps ever further forward and so **NEW HELP IS MUCH NEEDED** not just in ideas but in helping with the maintenance and the raising and taking down of the lights. **Our AGM will take place on Thursday 30th March** when new people will need to take on some of the main roles (possibly Chairman, Secretary and/or Treasurer) if the Christmas Lights are to continue.

If you would like to get involved in

**SUPPORT LOCAL
BUSINESS**

Enjoy true freedom
of movement...

Rediscover your vitality



Our practitioners are all highly qualified, covering chiropractic, sports massage, physiotherapy, aromatherapy massage, chiropody/podiatry and reflexology.

www.cornwallclinic.co.uk | Foundry Square, Hayle | Call today 01736 759088

any way please contact us via email at :

HayleChristmasLights@gmail.com, speak to our Chairman, Patrick, on 07787 962001 or search for us on facebook.com/groups haylechristmaslights) or come along to our meetings on **23rd February or 30th March.**



The Millponds Update.

A very Happy New Year to all our Millponders. I hope that we have a bit less of the strange seasonal weather in 2023. We seem to have lost Autumn and the spectacular colours which we usually enjoy along the Peninsular between the outer and inner Ponds. Our swans are now dispersed around the entire area of the Estuary and have established their own territories at Lelant Carnsew and Penpol. Odin and Solar

are on Penpol Creek and seem to be quite contented at the moment. One hopes that they might eventually return to their home on the Millponds, but I have my doubts that they will ever breed again.

The millpond drakes are well content. They have a regular weekly feed so that we can check up on their health and wellbeing, but we also have a little black and white interloper which seems to think that he might enjoy a feathered breakfast. Our drakes seem to have worked out how to keep out of his way which must be very frustrating for him. We also have a few regular visitors, a young cormorant and egrets are regularly seen during the day and the kingfisher makes the odd appearance on the Island. The gardens are tidy and the water going into Pen Pol Creek is clean.

We would like to thank Hayle Christmas Lights. Their annual display was very much appreciated, We always miss them after 12th Night when they are switched off. Now we look forward to the Spring Daffodils. Bye for Now.

Georgina Schofield. Volunteer Wildlife Warden



Open every day serving lunches and evening meals. Fabulous beer garden! FAMILY friendly- friendly dogs welcome. Famous for our ales and Sunday roasts!

Ph 01736 753237



The Cornish Arms Hayle
@thecornisharmshayle



giving
nature
a home

I recently met a man at the Black Bridge.

He was bedecked with binoculars, a telescope, and a camera, and was scanning the flock of birds roosting in the middle of Copperhouse Pool. I asked if he had seen anything exciting among the birds. 'ALL these birds are exciting,' he said, 'I live in London, and we don't see any of them there!'

One of these exciting birds is the golden plover. They migrate from Scandinavia and the Arctic regions to winter in the UK. There are small numbers here some years, but a large flock of them is currently roosting on Hayle Estuary, and are easily visible from the Causeway. When the sun is shining, it catches

on the golden feathers of the resting birds, causing glints of gold. Aptly, the species name *apricaria* is Latin and means 'to bask in the sun'. The cold weather in the north before Christmas probably pushed the birds further south this winter.

These are flighty birds, easily disturbed, so they tend to avoid Copperhouse Pool, a bit too small and busy for them. The estuary offers them space and peace, though large flocks of birds tend to attract predators, such as peregrine and sparrowhawk.

The birds feed in the fields, often in the company of lapwings, which are also members of the plover family. They leave in early spring, to return to breed in Scandinavia or the Arctic, though small numbers breed in the UK.

It is worth making the effort to see

Saints

funeral services

INDEPENDENT FAMILY FUNERAL DIRECTORS

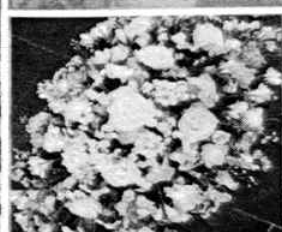
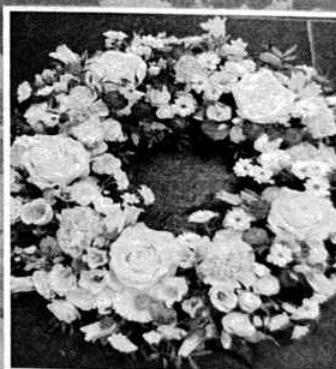
- PRIVATE CHAPEL FOR SERVICES
- RELIGIOUS/NON RELIGIOUS WELCOME
- PRIVATE CHAPELS OF REST
- PRE PAID FUNERAL PLANS

TEL: 01736 447070 (24HRS)
www.saintsfunerals.co.uk

KING GEORGE V
MEMORIAL WALK,
PHILLACK,
HAYLE .



BARNOON
CHAPEL,
CLODGY VIEW,
ST IVES.



Funeral Flowers Cornwall

By Flowertime @ The Big Pink Tree

**Flowers speak,
where words fail.....**

Saying goodbye is never easy, allow us to express your sentiments with a beautiful floral tribute.

www.wesendflowers.co.uk

01736 757006
17 Penpol Terrace

Little Plumbing Jobs

*"No job too small
just gimme me a call"*

07779 157157

Simon Miller

these birds, and perhaps feel the same excitement as our visitor from London.

RSPB is happy to report that avian flu has not been as severe as it might have been in Cornwall this winter, and that monthly litter picks will continue around the estuary.

The Americans call the bathroom The John. I call mine The Jim. That way I can honestly tell

everyone I've been to The Jim every morning.



children's hospice
SOUTH WEST

Hayle friends CHSW Little Harbour would like to say a huge thank you to the Badger Inn at Lelant for the magnificent cheque of £5,600. This amount has been raised over the past year by quiz nights, bingo nights and many special events held at the Badger. The staff and customers have been long standing supporters of CHSW Little Harbour and over this time have raised in excess of £20,000. This fantastic amount has helped the staff at Little Harbour continue the wonderful work in caring for life limited children and their

**DAVE
THOMSON**

**DECORATING
INTERIOR &
EXTERIOR.
FREE QUOTATIONS**

**TEL 07518 136 730
01736 754647**

**Dave.thomson2013
@hotmail.co.com**

HEARING
SERVICES CORNWALL
LIFE SOUNDS GREAT



**Local Independent Hearing Aid
Audiologist Richard Bunce
based in Hayle can help you
hear again.**

**Service and repairs to most
makes .**

**FREE HOME VISIT HEARING TESTS
covering Cornwall .**

**Book your appointment on
0787 218 3742
ears11@sky.com**

families, giving care and support through the most difficult times. when parents are so tired they don't know how to carry on, Little Harbour is there, when siblings need someone to talk through their anxieties, Little Harbour is there and when there is a need for that special touch at end of life care, Little Harbour is there with love and a shoulder to cry on, and beyond as long as a family need them they are there. If you would like to know more about CHSW Little Harbour give them a call and ask to have a tour to see how your money is used to keep this amazing facility in Cornwall.

We would also like to thank the members of the bingo club at Hayle rugby club for the most generous donation of £1000 during the many

years the members of the bingo club have been supporting Little Harbour they have donated the wonderful amount of £10,600. This has helped in many ways to provide much needed care to sick children and their families at most difficult times. Throughout the times of lockdown and since when extreme care has to be taken, care has had to be adapted to support these families and home visits became the way to be with many families. However this was not possible for all situations and little harbour remained ready, to be there to give time and care to those families for whom that help became vital.

Thank you for your continuing support. Mary Trevarthen
Coordinator Hayle Friends CHSW.

**PASSMORE EDWARDS
INSTITUTE**



MEETING ROOMS FOR HIRE

Hayle's Village Hall
has rooms for
meetings & activities
for 2 to 60+ people

For more information:

WWW.HAYLE-PEI.ORG.UK

bookings@hayle-pei.org.uk

Or call: 07895-601978

13-15 Hayle Terrace
Hayle, TR27 4BU
Charity Number 268429

**PHYSIOTHERAPY
MASSAGE**

SHIATSU

CHRISTIAN THELERMONT

Fellow of the Shiatsu Society UK (FWSS)

27 years practising

Sports injuries

Increases circulation

Improves posture

Client stays fully clothed

synergyshiatsu.co.uk

07949 938096



PASTURES NEW

Entering a new year, it's natural to look back to the old one and to reflect on what's been achieved as well as to look forward to exciting times and projects ahead. Well, 2022 was an extremely productive one for Friends of the Towans: we carried out 65 sessions of practical work -

delivering 2,107 hours of positive habitat management, while our beach clean team went out another 8 times, spending 156 voluntary hours keeping the '3 miles of golden sands' clean and tidy. WELL DONE and THANK YOU to all of you who helped in this - it's a really great community effort.

We also got our Towans art club and Towans wildlife monitoring groups up and running.

Along with the whole of Hayle and Cornwall, we were incredibly shocked and saddened to learn of the sudden and unexpected passing of John Pollard - one of our trustees and long-term supporters of all things Towans. The loss we feel in terms of his wisdom, guidance, good

company and practical help must be nothing compared with the loss his family must feel, and we send them our sincere condolences. We will endeavour to build on the legacy of both of 'our Johns' - having lost John Bennett also in 2022 - by ensuring that FOTT continues to become a strong, vibrant charity, effective in protecting the Towans that they both held so dear.

Some of you will have noticed our ponies have returned to many areas in recent months including Mexico, Upton, Gwithian Towans and Gwithian Green. There's another team of volunteers helping to keep an eye on these each day to ensure their safety and well-being, so thanks to them too. If you'd like to help with this, or our twice-weekly practical tasks, send me an email. Winter is our busiest season for doing this

Hayle Mobile Barber

Over 30 years
experience.

Tel Arran on 07340

511 070 for
appointments and
enquiries



1st CHOICE PAVING

Drives, patios, paths, landscaping, resin bound aggregates and artificial grass.

01736 753087 07969 960128

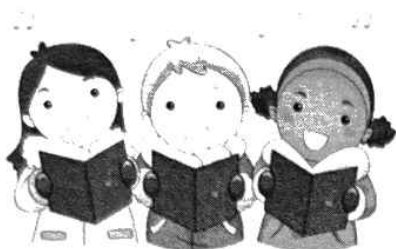
www.1stchoice-paving.co.uk



work, so there really is no need to complain you have nothing to do....!

We provide tools, gloves and biscuits and usually have a cheery bonfire - sometimes with baked potatoes too!

Heyl St Piran Singers



Ladies! Do you fancy doing a work

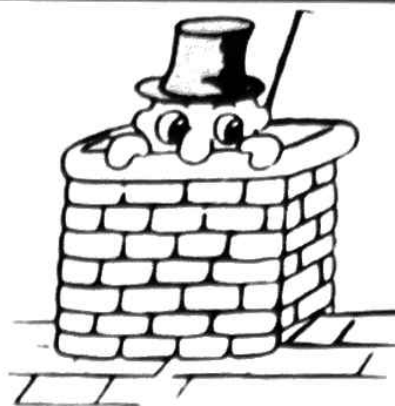
-out that doesn't bring you out in a sweat? Singing is a recognised way of providing a gentle work-out, improving lung and heart function and raising spirits.

Heyl St Piran Singers are calling for new members to join this four part harmony ladies choir. It is always a good time to start something new, keeping the mind and body active and we welcome anyone who can sing in tune, who wants to improve their physical, emotional and social well-being by being part of a small but friendly choir.

We are currently practising for a joint concert with a male voice choir from Welwyn Garden City, to be held later in the year. We want to impress by making as big and as pleasant a noise as possible, and swelling our numbers will certainly help.

We also provide afternoon entertainment sessions for local clubs and nursing/residential homes, giving us as much pleasure as we hope our audience gets.

We meet on Wednesday evenings at 7.00pm until 9.00pm, at the Old



LAWRENCE BUTCHER CHIMNEY SWEEP

Traditional and power sweeping, Solid fuel servicing and repairs, certificates issued, CCTV flue inspections, cowls fitted, CO alarms fitted, fully insured

07966 547829

01736 850033

loloubutcher@aol.com



School Rooms in St Erth. You will be offered a voice test to establish which voice section you should join. This is not an audition - no need to get anxious, just a simple run of the scales. For more information ring Carol on 01736 753496, or just come along on a Wednesday evening.

If you are the leader of a group, and would be interested in the choir coming to sing for you, please ring Carol on the number above to discuss out terms and availability. We look forward to meeting you.

Hayle Methodist Church - Thursdays 10am-4pm (free hot drink, WiFi and charging point).

Copperhouse Community Café: New for Tuesday afternoons with a Family Homework club! Open from 3 - 6.30 for families with children of any age for homework, chilling, play, relaxing. Includes a free cooked meal for all the family at 5pm. There will be snacks, free Wi-Fi and a warm welcome for all. Plus, 12 noon to 3pm weekly on Thursdays, offers a warm welcome to all comers over the winter months, with free lunch and drinks available at Phillack Church Hall.

Hayle Day Care Centre (Over 50s only) Monday – Friday, 9am – 3pm, (small charge for lunch)

The Star Inn at St Erth - Every day,



Feeling the pinch? Try these hot ten tips.

1. Go to one of the Warm Spaces centres in Hayle. There are several spanning days of the week through the winter.

Light and Life Church, Penpol Terrace, Hayle (Under 50s):

Tuesdays: 1.00pm – 3.30pm

Wednesdays: 11.00am – 3.30pm

Thursdays: 10.00am – 3.30pm

Fridays: 12.00pm – 3.30pm

JAKE'SMOBILE

PHONE REPAIRS

01736 757233

07873 799 930

AFTERNOON

SOCIAL DANCE on Wednesdays

SIMPLE SEQUENCE, BALLROOM AND LATIN.

1.30 PM - 3.45 PM

TEA AND BISCUITS PROVIDED

AT LEEDSTOWN VILLAGE HALL TR27 6FJ.

ALL WELCOME.

FOR MORE DETAILS CONTACT ANDREW ON 07950687392 OR 01209833773.



FREE soup, 12.00-5.00pm.
St. Erth Community Café: St Erth Church Hall Friday 12.30 - 3.30pm.
During the cold winter months, come and relax in a warm and welcoming environment. Free hot drinks and a light lunch available and free Wi-Fi. Everyone is welcome

2. Hayle Food Bank at the Methodist Church on a Saturday between 10.00am and 12.00 noon. The Food Bank can be accessed through self- or agency-referrals to collect or have goods delivered. Orders preferably by Thursday to haylefoodbank@gmail.com.

3. Living on your own? Share a meal with a neighbour also on their own; you cook one day, they cook the next! This saves energy and provides company.

4. Cook meals for two or three days

and freeze.

5. Do you know this ditty? 'If it's yellow, let it mellow, if it's brown flush it down'. Keep to that, when you go to the loo, and save many litres of water (and money!). South West Water provides free water-saving devices on application including timers for showers! - (<https://www.southwestwater.co.uk/>).

6. If you are not in the room, you do not need the light: turn it off when you go out.

7. Fill your washing machine and dish washer before turning them on. Use white vinegar rather than softener for your washing (check manufacturer's instructions first).

8. Draw your curtains as soon as it gets dark.

9. Turn down the heating and put on

ThurstanHoskin SOLICITORS

YOUR LOCAL SOLICITOR

At Thurstan Hoskin we like to take the stress and worry away from you.

We offer expert legal advice on :

- Property Services & Conveyancing
- Wills, Probate, & Powers of Attorney
- Deputyships, Trusts & Inheritance Tax planning
- Commercial Property & Leases

HAYLE  01736 230 055

33 St Johns St, Hayle, TR27 4LL | Mon-Fri 9am - 5pm

info@thurstanhoskin.co.uk

www.thurstanhoskin.co.uk



Malt Decorations

Interior & Exterior Painting

07795 083 839

www.maltdecorations.com

Hayle & Surrounding area

an extra layer.

10. Buy veggies in season and supermarket own label items.
S.M.

The Bells of Phillack



We had quite a busy time over the last month or so, sadly starting with the funeral for our late Tower Captain, Michael Smaldon. Michael, who died aged 91, had been ringing the Phillack Bells since the age of 14, a total of 76 years, and 44 of them as Tower Captain. It goes without saying that he is greatly missed, in the Tower, and elsewhere. He was

one of Nature's Gentlemen. Ringers from other Towers joined us to ring two muffled peels for him as he left the Church after his well-attended service. It was an honour to do so.

We rang for the Christmas Service on Christmas Eve, and for the New Year. Only 4 ringers available, but we made a nice noise just before and just after Midnight. Happy New Year!

Our new ropes are now in place, and still feeling a bit strange. They will need some adjustments soon.

We have a new ringer, who is keen to learn the ropes, so to speak. We are always happy to receive enquiries or

SUPPORT LOCAL
BUSINESS

BUSH MONKEY GARDEN SERVICES

Keep it simple Keep it local !
Over 25 years experience with that
personal touch.

Qualified and fully insured

Lawn care

Planting schemes

Weed & insect control

Tree hedge & shrub pruning

Garden maintenance & design

Decking Patios

Pressure washing Call Anthony for free
no obligation quote or advice.

07825 881 078

bushmonkeygardenservices@yahoo.co.uk

ANGOVE

SPORTS

COPPERHOUSE, HAYLE.

Tel(01736) 752238.

**For all sports equipment,
clothing, footwear
and fishing tackle.
Rackets repaired
and restrung.**



visitors. Our practice night is Tuesday, 7.30pm/9pm. Ph:756567

Going Potty: Off to a Flying Start.

When I thought of having my pottery sales on the first Monday of the month I wasn't sure if it would be what people wanted, but what a nice surprise I've had! The very first one on November 7th was a bit quiet, as the weather blew cold and damp, but despite it all several people braved the big outdoors and I had some minor sales.

The second one on December 5th was more productive - word was getting around and Christmas came lurching into view. Several of the

small masks were sold plus some of the garden sculptures. My 'Hedgerow Pots' received praise and interested comments, so I have taken a gamble and placed a group of three into the March 7th Barbara Kirk Auction in Penzance, alongside work by such notables as Janet Leach, Peter Hayes and Phil Rogers. We all have to start somewhere.

Anyone reading the previous article in the Pump might have been confused by a scrambled sentence. It should have read: 'I have found and processed small amounts of local clay. I use a small potting shed to work in..', not '..I have found and processed a small potting shed', but nobody's perfect. The local clay really is in tiny amounts, gleaned from friendly farmers' fields and

Going potty?

Then come to my ceramics sale!

First Monday of every month, inc. bank holidays, or by appointment.

Handmade vessels, garden sculpture, figures, raku, experimental pieces, all at sensible prices.

The Potting Shed, 47 Mellanear Close, Hayle, TR27 4QU (not far from the Millpond and opposite Hamilton Close).

10.30am to 3.30pm. Bring any copy of the Pump which displays this advert and get 10% off all items.

Semper Crescere!

Email: linda.ezlxq141@gmail.com

Text: 07415 471378

MJA Waste Clearance

Fully licenced & Insured for waste clearance and light haulage service.

House & Garage clearance,

Garden waste clearance,

Holiday home waste collection,

Shop & Site clearance, Trailer

towing.

Also free scrap collection.

See us on Facebook at

MJA Waste Clearance



mjawcplus@gmail.com

Phone: 07593531363.

necessitates mixing it 50/50 with commercial clay to add plasticity. The processing takes weeks. I do not make many items from this clay.

The weather has not been good enough to try out the raku firing method and I would like to see what my next electricity bill is going to be before I go ahead. Firing the kiln will cost at least £10 each time. As for the Japanese Knotweed experiment, I burned 24 dry stems from the previous season, and it made the most wonderfully soft grey ash, much softer than dried wildflower stems which made a slightly gritty glaze. I think the JKW will make a good glaze, which I will try out once the 'leccy bill is in. My best ash result to date used sunflower stems. Mixed with basic transparent glaze it gave a clear pale blue colour on a white stoneware pot.

Production has been very low key over the last couple of months following the death of my mother Audrey in November. There were just so many other things I had to deal with, but I did manage to make 12 pots on the wheel from raku clay, ready for better weather, and I still have plenty of interesting items in

stock, including some nicely shaped wheel thrown vessels.

So don't forget, on the first Monday of the month, rain or shine, Bank Holiday or not, wet or dry, I'll be having my Open Studio and sale. See the advert for details and do not forget the 10% discount! All held indoors now too, which is a big improvement. Refreshments provided.

Kind regards to all, Linda King.

BIZ AND BYTES

07974 647524 01736 755971

If you require computer assistance, either training or to resolve a problem then give us a call. Visits arranged to suit you.

Looking after the home user and small business.

**WEBSITES • BROADBAND • TRAINING •
COMPUTER SUPPLY • TYPING**



www.bizandbytes.co.uk
enquiries@bizandbytes.co.uk



I went into a pub and ordered 6 glasses of scotch, after three I said to the barman "I shouldn't be drinking this with what I've got". He said "Oh dear, what have you got?"

I said "50p"

One Day
Antique Vintage Collectables & Militaria
Buying & Selling

onedayantiques@yahoo.com

Jason Day 07909 850 563

Unit 14 Old Foundry Chapel Hayle
TR27 4AB



Hayle Lions



Many thanks to all Hayle residents who gave their support during 2022. It gives us enormous pride and pleasure to be able to assist in our local community alongside international aid. We could not continue helping others without your tremendous support. During 2022 which was another difficult year for most of us, you all came out with great support and gusto to our various fundraising events. Whether it was our Craft Fayre, the Lantern Parade, supermarket collections to name but a few or our now famous Santa Sleigh cruising around Hayle at Christmas time with our jovial

Santa ... ho ho. Hayle Lions are local volunteer people so we do understand the requirements needs and issues in the locality. Always looking to recruit new volunteers to our happy den of Lions. We meet the 2nd Tuesday 7.30pm at Passmore Edwards Institute Hayle.

Call in for a cuppa to meet us. Hayle Lions next fund-raising event is a Quiz night at the Old Quay House Hayle. On 21st February at 7pm.

All welcome please contact 07710 235412 to book a place. We would take this opportunity to thank you all and to wish everyone a very Happy Prosperous and Healthy New Year 2023.

I accidentally rubbed ketchup in my eyes. I now have Heinzsight

JC ELECTRICAL

Your complete 24 hour Electrical Service

**Rewires • New Build • Lighting •
Showers • Extra Sockets • Heating**

City & Guilds Qualified (Tests to BS7671)

Part P registered

Prompt and reliable friendly service

Free estimates and all work guaranteed

Office: 01736 754543

Mobile: 07739 577549



Letter

The following letter has been sent to the Pump anonymously. We would like to remind correspondents that they should supply name and address, which we will not publish if they so wish.

“Many Hayle residents are concerned about the King George V Gardens. The gardens are a credit to Hayle.. The gardens are very attractive and it’s not just the gardens but the estuary runs alongside always changing always something to see. The main concern is the fence yards of fence could be removed it serves no purpose even a landslip behind the fence would not be dangerous to the public. The land behind the fence could easily contain any landslip and the once attractive gardens behind the fence it’s a disgrace could be maintained at least. Even leaving the fence the gardens could be kept neat and tidy. The fish pond behind the fence had or has a leak the fish have been removed

and will not be put back just how much management will the people of Hayle stand? Like I have said I have 50 years. Experience with these kind of gardens. Most of the fence could be removed even leaving the fence is no excuse for not maintaining the gardens behind—let’s face it the walk to the beach is now far more dangerous than the Memorial walk. The north Quay houses have created a windswept dingy walk to the beach by the estuary. One slip on the quayside walk you are a goner.

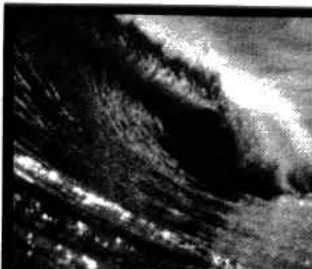
From a Hoyle resident.

I represent dozens of people who use the Memoria) walk. I am the voice of reason and common sense

NAWT

Abandoned on Christmas Eve – Evie and Frankie’s Story

Just hours before Christmas Eve, we were alerted that there was a mum

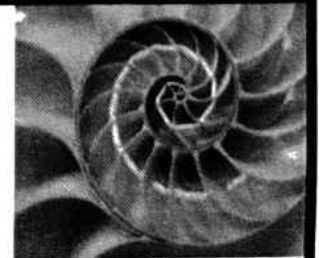


THE COPPERHOUSE CLINIC

5 Market Square, Hayle, Cornwall. TR27 4EA

01736 757524

www.thecopperhouseclinic.co.uk



GAIT ANALYSIS
LOWER LIMB BIOMECHANICS
LAB MADE PRESCRIPTION
ORTHOTICS
HCPC REGISTERED

CHIROPRACTIC
GCC REGISTERED

CHIROPODY & PODIATRY
LASER TREATMENTS
HCPC REGISTERED

and 2 puppies that had been abandoned. They were cold, hungry, underweight and in urgent need of care. Upon arriving at the centre it was clear that mum and pups were in



a bad way. All three were covered in fleas, had stomachs swollen with worms, were anaemic

and completely drained of energy. Their energy was so low they couldn't even lift their heads to feed. During that first night, in the early hours of

Christmas Eve, little Murphy one of the pups crossed the rainbow bridge. He was simply too weak to carry on. The second pup (Frankie) then started to head south and an emergency trip to the vets for fluids was made. The vets gave him IV fluids and monitored him for the afternoon, while Mum received continuous care from the team. Late afternoon little Frankie came back to us, looking a little brighter and ready to snuggle up to his mum. From this point the pup and Mum were monitored through the day and night, being fed every 2 hours through Christmas Eve, Christmas Day and in to the Week.

Things have been hard and there have been a few times we have doubted whether little Frankie would make it, but we are so proud to say

PROPERTY REQUIRED TO RENT

West Cornwall.

Clean Living, middle-aged Gentleman seeks a long-let UNFURNISHED home.

Between Longrock and Camborne and surrounding areas would be great, but not essential. I need 2 or more bedrooms or 1 bed with decent storage space, or large shed.

Parking or garage is essential. A non-smoker ex builder, so very handy.

I may be able to offer: a little care-taking, maintenance etc. I will consider anything that is habitable or very nearly.

If you have anything in the back of your mind, lets chat.

Text: 077 044 055 49

Email: West.Point@Hotmail.Co

Mr. B's

Famously Fresh Ice Cream

- Coffee & other hot drinks
- Traditional ice cream desserts
- Healthy salads
- Fudge - Buy 3 bars and get a 4th one free!!

Eat in or take away
(subject to Covid restrictions)

OPEN DAILY

Fore Street, Copperhouse
Penpol Terrace, Foundry

📞 mrbsicecream

🌐 mr_bs_ice_cream

Tel: 01736 757925



www.mrbsicecream.co.uk

that little one is a fighter, stronger than ever and has even made friends with the kittens in the cattery! (although even they are bigger than him!). Mum is also doing really well, she's very loving, vocal and enjoying her walks with the team for a little time to herself while Frankie plays with the kittens.

The moral of this story is, there is never a reason to abandon an animal. Charities like ourselves are here to help. If you're struggling for whatever reason and cannot care for your animal any more we are here, judgement free and ready to help. Basic needs such as worming, flea treatment, vaccinations, neutering, food and shelter are essential for any healthy pet, and something which it is

so important to consider the cost of before taking on any new .

We have the utmost respect for those who seek our help when they are in need. Life and circumstances change and we understand this. Evie and Frankie's story could have been so different had someone not found them and brought them to us. Help is here if you need it. You can call us on 01736 756005, email to cornwallreception@nawt.org.uk or come and see us on Wheal Alfred Road, 11am-4pm daily.

Once he is of the correct age and strong enough, little Frankie will be heading to his new home which has already been found, but Evie, this

WEST CORNWALL *plastics*

We are delighted to announce our recent award of the Which Trusted Trader Scheme. We have been inspected by Which magazine and Ultraframe, the leading manufacturer of conservatory roof solutions, and passed with flying colours.

As well as carrying a wide range of PVC building products in our warehouse, our installation teams carry out work to the highest standard, giving you the peace of mind that comes with using a Which Trusted Trader.

I would like to thank the readers of Hayle Pump magazine for their continued support, as we serve the people of Hayle and beyond with the best PVC and Aluminum building products

Thank you
Nick and the WCPL team

*West*COAT

CERTASS



- QUALITY SERVICE
- QUALITY INSTALLATION
- QUALITY PRODUCTS

INFO@WCPL.CO.UK
01736 759444
[@WestCornwallPlastics](https://www.westcornwallplastics.co.uk)



incredible Mum, will be in need of a loving home. Once she is available for adoption her details and an application form will be available on our website nawt.org.uk and online applications will then be open and accepted. For now, it's back to cuddles and play time for Evie and Frankie.... See you soon.

. When Dillon came in to the NAWT Cornwall Centre he had been found lying across his deceased owner, remaining loyal to him to the very end. After little interest and a series of unlucky events resulting in several failed rehoming, Dillon headed to his final forever home and has been living with his new family happily ever after since.

Dillon's new owners are over the moon with how well he has settled in to their lives, he is an incredibly funny character and as well as food, his new favourite thing in the world has been... shoes! And his new family frequently find their shoes hidden around the house by this hilarious character. We love seeing happy endings like this. In 2021

**SUPPORT LOCAL
BUSINESS**

Cabinetmakers & Joiners
**JOHN
ANDREWS**

Windows, Doors & Staircases
constructed in soft wood and
hardwood.

Entrance gates
Fitted Furniture.

Restoration & repair work
including Boxframe windows.

Sash cords. Free estimates ,
email:

johnandrews123@btinternet.com

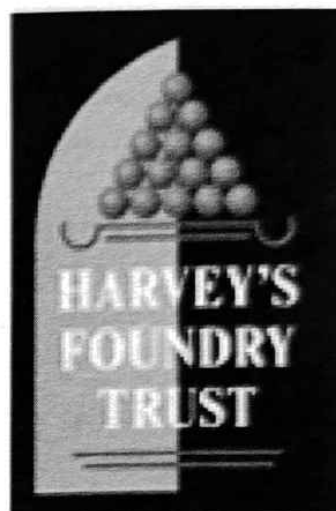
www.johnandrewsjoinery.co.uk

Mob 07765 341616

tel 01736 755423

**Hayle
Heritage
Centre**

Hayle Heritage
Centre closed its
doors for the
season on the



Des Button

Electrical Services &
Supplies

Rewiring,

Fitting Consumer
Units,

Sockets & Switches

Emergency callouts.
For Free Estimates &

Friendly
Advice

Call

01736

753211



28th of October last year. We welcomed nearly 2,000 visitors, held two pop-up exhibitions, had a great summer of family craft sessions, and ran a fascinating programme of workshops and talks.

Recent acquisitions included the Bickle family archive, J&F Pool copper, and a large, framed photograph of St Michael's Convent School. We will be showcasing these and other acquisitions on our social media over the coming months.

We will re-open at Easter but, for now, our team are busy preparing a programme of activities and events for 2023 as well as cataloguing the recently acquired Hayle Community Archive collection.

As part of the summer programme, we are planning a temporary exhibition concerning Hayle Carnival over the years. If you have any memories, photographs or objects relating to the Carnival, we would love to hear from you. If you would like to join our mailing list to be the first to hear about our activities and events, please get in contact by emailing enquiries@hayleheritagecentre.org.uk

If you have a love of history, we are on the lookout for more volunteers to join our friendly team for a few hours each week. Please do get in touch.



HYDRO BATH **BLOW DRY**
BRUSHING **NAIL CARE**
EAR/EYE CARE **FLEA TREATMENT**
DEODORIZE **CLIPPING.**

ALL NATURAL PRODUCTS.
PH 07903 042950
Lesley 01736 850971
E-mail lesleyandkeith@msn.com
City of Guilds Trained



Make your own perfect gift at our jewellery making workshops



Gift Vouchers Available



We offer one-to-one, parent and child or small group bookings. All materials and tools provided. Covid-19 safety measures in place.

To book your workshop session contact us:
Tel: 0757 077 4332 E: sales@brettandleni.com
Shop online: www.brettandleni.com
Unit 6, West Stables, Foundry Lane, Hayle

Aspects Holidays helps 'Hope for Harm' in Hayle Jenna Ali



Cornish holiday letting agent Aspects Holidays has donated £750 to Hope for Harm, a Community Interest Company based in Hayle, working to support adults who self-harm. Once

referred to Hope for Harm, an individual will receive up to 18 sessions of therapy from highly qualified and experienced counsellors - Jenny in Hayle, or Lucy in Falmouth. Aspects Holidays' generous donation of £750 will provide a full course of therapy for one individual. Hope for Harm began as an idea in lockdown when Jenny Trevethan decided more had to be done to help people in need of support, specifically for people who self-harm. And so, Hope for Harm was born, and in March 2021 it was registered as a

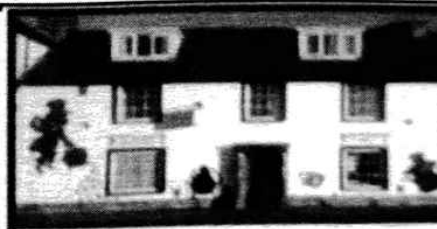


HOSKING ROOFING

* GRP FLAT ROOFING * TILING
* SLATING * REPAIRS * NEW ROOFS

Tel 01736 758458
Mob 07909 943 098

**DIRECT TRANSPORT
Removals & Storage**
**LOCAL & NATIONWIDE
Full & Part Packing Service**
Call for a free
competitive quote
Tel: 01736 603018
or 07476 223221
7 days personal service



The Mad Hatter

Bed and Breakfast Open all Year !
Rooms overlooking Copperhouse Pool.

Full English breakfast.
Competitive rates.

*Relax with a Scrumptious Cream
Tea or Homemade Cake in the
Café or Tea garden.*

Open 10am-4pm
Monday to Sunday.
Closed Tuesdays.

From Easter

73 Fore St Hayle TR27 4DX
01736 754241 07871 165 381

www.cornwall-online.co.uk/madhatter
paulinemadhatterbandb@outlook.com

Dogs welcome

Community Interest Company. After just a matter of months, however, Jenny had received so many referrals that she quickly reached capacity.

Therefore, in order for Hope for Harm to be able to reach as many people in need as possible (across Cornwall), from April 2023 it will become a service within Cornish charity CLEAR Emotional Trauma and Therapy Specialists. This will increase future chances of securing funding and enable the much-needed Hope for Harm Service to develop across the whole of Cornwall.

Jenny said: "I am delighted to receive this generous donation which has come at just the right

time for Hope for Harm. Thanks to the generosity of Aspects Holidays and our future plans with CLEAR, the future is looking positive"

A BEACON FOR SUPPORT, FUN AND FRIENDSHIP

We are for people with memory problems, their families and



carers. We dance, we sing. We make things, we share things. We do quizzes, we do puzzles. We talk, we drink tea and eat cakes. We are always there. We share. We care But, best of all, we are free. (But donations are always welcome) We meet on the 1st and 3rd Monday of each month. (Except for Bank Holidays) From 2.00pm to 4.00pm AT Hayle Rugby Club Memorial Park Marsh Lane Hayle TR27 4PS Please NOTE we are NOT a Day Care Centre – we cannot offer Personal Care

For more information contact us on:

07513 221 066

DATES FOR 2023

February 6 and 20
March 6 and 20
April 3 and 17
May 15
June 5 and 19
August 7 and 21
September 4 and 18
October 2 and 16

YOUR OLD TAPES ONTO CD



YOUR OLD CASSETTE, REEL TO REEL TAPES OR 33/45/78 RPM RECORDS ALL SAFELY TRANSFERRED ONTO CD

Your precious memories saved forever. Your own photos, information & dedications can be included on the CD/DVD cover.

Also now: old VHS video tapes & photos all onto DVD.

Digital Recording for Singers & Musicians, Songwriters, Poets, Story Tellers, etc.

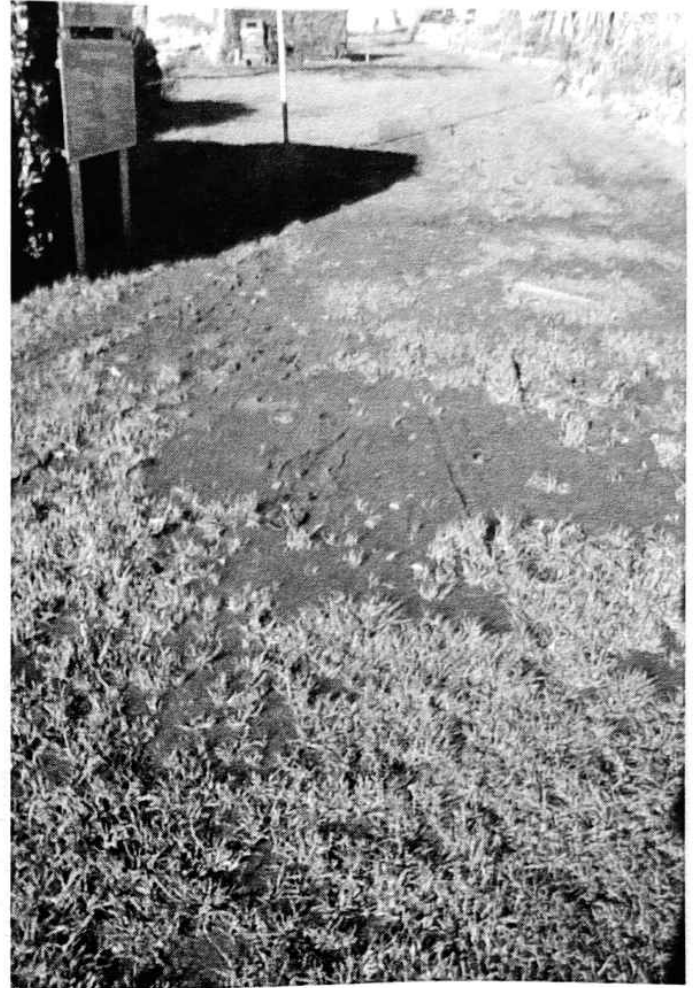
Also Musical Backing Tracks provided.

**Contact Steve Nunn. 01209 719 481
www.cornmillstudio.co.uk
 Email: cornmillstudio@aol.com**

November 6 th and 20 th
December 4 th and 18 th

Letter to Council and Hayle Harbour Company

The harbourside green along Penpol Terrace has been turned into a quagmire as it has done for many years, but now worse. Walkers are struggling to get through and often resort to using the thin roadside strip which is dangerous as it is on a slippery slope. Someone will soon fall, and be run over by a car or bus. Who is responsible for this, the gardeners? The Harbour Company? I am sure there is a simple remedy for this, perhaps gravel or wood chippings,



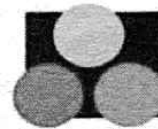
Dreckley's Waste Collection House Clearance & Deliveries

No job too small

**Garages, Houses, Sheds, &
Gardens cleared.**

**Fully registered & insured.
Honest reliable friendly
service.**

**Call Suzanne on 07877 325404
Email: dellamuro@btinternet.com**



**CVC
Solicitors**

**Confidence to Care for all your
Legal Needs!**

We offer advice on the following:
Business & Employment, Conveyancing &
Property Matters, (including Commercial),
Family & Children, Civil Litigation &
Personal Injury, Wills and Inheritance Tax,
Lasting Powers of Attorney, Probate &
Estate Administration, Elderly Client and
Care Home Fees.

**We have offices in HAYLE,
PENZANCE and ST IVES**

**We can also undertake home
appointments in Hayle by arrangement.**
Please call us to make an appointment on:

**01736 362362 or
email: enquiries@cvc-solicitors.co.uk
or see our website:
www.cvc-solicitors.co.uk**

whatever but something must be done soon, Perhaps there is a councillor who would like to take on task?

S.M.T.

Honour awarded

Sue Sayer, Founder and Director of the **Cornwall Seal Group Research Trust** (CSGRT), also known as the Seal Research Trust (SRT) nationally, has been awarded an MBE in the New Year's Honours 2023.

Sue has dedicated over 20 years to marine conservation and in particular the UK's native, heritage seal species. Her volunteer dedication, leadership and passion have inspired hundreds of volunteers that assist Sue in her quest to make the marine environment a healthier, more economically vibrant

and protected place for all of us to enjoy.

Sue has been a driving force for change. Coordinating scientific evidence to inform marine conservation Sue has concentrated her efforts into delivering learning experiences for all ages groups right across the UK.

Dan Jarvis (CSGRT Trustee and British Divers Marine Life Rescue Director) said 'It has been an absolute honour working alongside Sue since CSGRT first formed. Her limitless enthusiasm for seal conservation and research has been a constant source of inspiration and motivator for everyone around her. We are always in awe of everything that she has achieved and the many collaborations and partnerships that have formed and benefitted greatly from her tremendous expertise and energy.



TP Wills & Probate.
Wills and Estate Planning Consultant.

"Where there is a will there is a way to protect your family"

- * WILLS * TRUSTS**
- * ADVICE FOR SENIOR CITIZENS**
- * POWER OF ATTORNEY**
- * PROBATE ADVICE**
- * CARE FEE PROTECTION**

Call **Tim Poole**
01736 758418 or
07900 323939



Institute of
Professional
Willwriters



APPROVED CODE
TRAINING & REWARDS GOV.UK

Ace Valeting

A friendly and professional
mobile car valeting service

**Full, Exterior, Interior Valets
and Maintenance Valets**

**Machine Shampooing Of
Car Upholstery & Carpets
Wax, Sealant, Hand Polish**

07919890662

acevaletingpz@gmail.com

Find us on Facebook: Ace Valeting

We have discovered huge amounts of new animal and site behaviours, individual habits and more that have been recorded by volunteers from across the region by CSGRT. None of this would ever have happened without Sue and her ability to bring everyone together in the way that she has. People and seals have a great deal to be grateful for in having such a passionate advocate!

And finally here is something to make you smile

In a recent media coverage of a major flood, a television director told his cameraman to quickly get dramatic shots of the disaster. He was driven to the airport, onto the runway and dropped in next an aircraft that was ready for take off with it's engine running. He instructed the pilot to get into the air as quickly as possible and off they went. The cameraman told the pilot to 'go in low' to get a perspective shot. He noticed that the pilot was sweating profusely so the cameraman asked him what was wrong.

The pilot responded 'I thought you were my instructor - when do we start to do landings?'



David N'jie
PAINTER & DECORATOR

07944 156995 01209 831397

dave.painter@hotmail.co.uk
Trethannas Cottage, Praze-an-Beeble
Camborne TR14 0LH



TJ'S CARPETS LTD

WIDE SELECTION OF CARPETS,
VINYLs AND LVT!

FREE MEASURING AND ESTIMATE SERVICE!

HOME SELECTION SERVICE
AVAILABLE WE BRING SAMPLES
TO YOUR DOOR, OR VISIT
OUR SHOWROOM!

**BEFORE YOU
BUY GIVE US
A TRY**

Tolroy Garage, 58 Mellanear Road, Hayle, TR27 6HF
01736 757540 OR 07976608215

Quiz 166 Flowers

No Hidden words this time. The following quiz has been sent in by Mrs M.Hollow. Many thanks to her. Hope you enjoy it.

1. Together we'll pick these in the Spring..
2. Wily paws are covered.
3. Not champion, but pink nevertheless.
4. Round the pond, the bunting appears,.
5. Perpetually in flower.
6. Send for St. George, it's snarling.
7. Embroiders call it lazy.
8. Perhaps Kate calls him this...
9. Men with shaven heads, kept covered.
10. "by any name would"
11. Whilst out walking, Wordsworth saw a lot of these..
12. In 1968 what did Tiny Tim tiptoe through?
13. Vincent was very fond of these.
14. Who is that lonely person at the dance?
15. Remember me forever,

We welcome quizzes from our readers on any subject of their choice

Answers to Cheeses quiz in last issue

- 1.Edam
- 2.Emmental
- 3.Cheddar
- 4.Feta
- 5.Yarg
- 6.Manchegeo
7. Boursin
- 8.Tilsit
- 9,Derby
- 10.St Paulin
- 11.Stilton
- 12.Cheshire
- 13.Ricotta
- 14.Goats

The winner was

J. Button of Hayle

To win a prize of £20 please send your answers by **13th March 2023** along with your contact details to editor@haylepump.org.uk or use any of our drop-off points on page 2.



Club Listings

Bodriggy Mental Health Group Wed 1-4 p.m, Day Care Centre Annexe

Bridge Club Every Mon. Carbis Bay Memorial Hall 2-5 pm £2 inc. tea & biscuits. Enq: Graham 01736 762512

Cornish Crochet Corner first Friday of each month 2pm-4pm at Cornish Arms No experience required. 01736 753237

Cornwall Scale Modellers 2nd Wed each month Hayle Day Care Centre 7-10pm friendly club, talks & display current models, tea, coffee, biks £2.30

Friends of The Towans Most Tues & Thurs 10am—2pm various locations on the towans. Contact Martin Rule 07854 123877, martinrule@talktalk.net

Fun Bingo 2nd wed of the month 7pm Connor Downs W.I. Hall Rosemary Smith 07817 078520 roandrod@hotmail.com

Hayle in Bloom. Last Mon. of the month, (not Aug & Dec) Passmore Edwards Institute 7pm. www.hayleinbloom.com

Hayle Amateur Dramatic Society meet in Hayle Day Care Centre Mon evenings 7.30—9.30. Call Ken on 07733 156530

Hayle Breezers Group Thursdays. 1.30pm Passmore Edwards Inst. April Hogarth 0781 376 7071, Bob Scales 01736 751735

Hayle Art Society Passmore Edwards Institute on Tues 1.30-3.30 & Wed 7.00-9.00 tel. Chris 01736 757720 or Penny 01736 756445

Hayle Christmas Lights last Thurs of every month (except Dec,) 7pm at Hayle Day Care Centre Annexe New volunteers are always welcome. haylechristmaslights@gmail.com

Hayle & District Bowling Club. 1.00pm every Wed Short Mat bowling indoors in winter 07766 662 908

Hayle Friends Group for CHSW Hospice meets informally once a month under the chairmanship of Mary Trevarthen 01736754342 trevarthenmv@uwvclub.net

Hayle Harbour Users Association 1st Mon, of each month, 7.30pm. Royal Standard Pub R Lello 01736 757632

Hayle Judo Kwai Unit 7 Rospeath Industrial Estate, Crowlas. Tues & Thurs. Sensei Richard 01736 740723 or Karen Deacon 0779 209 9979

Hayle Library Reading Group. 2.p.m first Wed. of each month

Hayle & District Lions Club. 2nd Tuesday of every month, 7.30pm at Passmore Edwards Inst. Secretary Yvonne Watson 01736 741375 yvonnemystique@hotmail.com

Hayle Lawn Tennis All ages and abilities welcome. Tremeadow Terrace, Hayle 01736 850843 www.haylelawntennisclub.co.uk

Hayle Local Vocalz Mondays 7.30pm, Hayle Methodist Church pluing@tiscali.co.uk 754225

Hayle Memory Café 1st & 3rd Mondays 2-4pm at Hayle Rugby Club Christine 07513 221066

Hayle Model Boat Club. Weds. 7-9pm & Sunday mornings 10-12 noon, meeting at green chalet by Hayle swimming pool. 01736 755516, or Les on 01736 754254

Hayle Meanderers Every Wed. 10.30am Commercial Road car park. Free, + contribution to carshare. Eddie Downing 01736 364673

Hayle Old Cornwall Society. First Friday of each month. Oct, to May at Hayle Day Care Centre 7.30p.m. Trevor Smitheram 01736 756793

Hayle Nutty Knitters Thursday 1pm at Cornish Arms 01736 762418

Hayle Penwith U3A at Hayle Day Care, Chair Mike Stuckey 01736 697771 u3asites.org.uk/hayle/home

Hayle Pilot Gig Rowing Club.

Rowing out of Hayle Harbour most Tuesdays and Thursday evenings
 chair@haylegigclub.co.uk

Hayle Probus Club White Hart Hotel
 2nd Thurs of the month for lunch 1p.m.

Hayle Railway Modelling Club Club
 Room. Unit 5, Praze Business Park.
 Praze-an-Beeble. Mon & Thurs 7pm
 Martin Scance 0797 7550051
 www.haylerail.co.uk

Hayle RNLI meets from March to
 November at 7.00pm the 2nd Wed. of
 the month at Unit 5 Hayle Industrial
 Park. Tel 01736 753567

Hayle Surf Life Saving Club Riviere
 Towans Hayle TR27 5AF Captain:
 Dave Parker 01736 755303

Heyl St Piran Singers Every
 Wednesday at St Erth Old School
 Room 7.00pm to 9.00 pm; Tel Carol
 Renton 01736 753496 or Ann Thomson
 07766128889

Hayle Twinning Association

Communicating on zoom during the
 Covid crisis. Contact George Daniel
 01736 333236 or email
 penelope.young@btinternet.com

Heyl Town Band Rehearsals Tues &
 Thurs 7:30pm-9:30pm, Juniors on
 Thursdays 6:pm-7:00pm

Macmillan Cancer Support

Meet at Three Trees, 16 Penmare
 Terrace, Hayle on most Thursdays at
 7.30pm Suzanne Benney 01736
 753635

One & All Choir (mixed) Tuesdays
 2.00pm to 4.00pm at St. Erth Old
 School Room. £2 a session Contact
 Ann Thomson 07766 128889

**Penwith Guild of Weavers Spinners
 & Dyers** 3rd Sun of mth (not March)
 1-5pm Passmore Edwards Institute
 01736 762418

Phillack Tower Bellinging every
 Tuesday at 7.30pm - Tina Morgan
 01736 756567

Phoenix Singers Tues 7.30—9.30

Hayle Day Care Centre Mrs T Cook
 797708

Royal British Legion Passmore
 Edwards Institute. Every Mon. Wed. &
 Friday evening and Sat. afternoon.
 Mr Alan Conquest 07470 308400

Scrabble Club at Connor Downs 2nd
 Thurs each month at W.I.Hall. 2-4pm £2
 for hall & refreshments .

carolinewindsor123@btinternet.com

Shore Surf Ladies Only & Juniors

Surf Club All abilities welcome.
 Every Saturday 9 – 11am. 01736
 755556 info@shoresurf.com

St Erth Sewers & Craft Group

Meets second Thursday of the month at
 St Erth Church Hall (Old School) from
 2pm to 4pm. New members welcome.
 Contact Kathy Tilby 01736 759943 for
 more information.

St Erth Concert Band Rehearsals
 Tues.7.30 to 9.30pm in Methodist Ch.
 Hall enquiries 0739 4617127

St Ives Camera Club Monday 7.30pm
 at St Anta Church Hall, Carbis
Baystivescameraclub.co.uk

St Ives and Hayle Community Choir
 Tuesdays 1.30pm to 3.00pm at St Anta
 Church Hall, Carbis Bay 07446 492266

Table Tennis for Fun every Friday
 2pm - 5pm Leedstown Village Hall. Info:
 Robert 01736 753951

West Cornwall Concert Band

Monday 7-9pm at Camborne Wesley
 Church – email Becky Lovegrove at
westcornwallconcertband@gmail.com

W.I. Hayle 1st Tuesday of the month,
 7.00 pm in Esme Jelbert Room at
 Passmore Edwards Institute
 Margaret Stockton 01736 756007

*To appear on this page free, see
 page 2.*

- | | | |
|--------------------------|----------------------------------|--------------------------------|
| 22 1st Choice Paving | 35 Direct Transport | 21 Passmore Edwards |
| 10 A. McDonald | 37 Drecklys | 11 Paul Sherris |
| 18 Ace Valeting | 4 Farm Shop | 10 Plantech |
| 16 All Aerials | 12 Fiona Blinds | 15 Philps pasties |
| 24 Andrew's Dance Class | 19 Flowertime | 14 Property Maintenance |
| 26 Angove Sports | 7 Gallery Cafe | 19 Saints Funeral |
| 13 Big Pink Tree | 11 Hayle Cycles | 21 Shiatsu |
| 28 Biz and Bytes | 16 Hayle Day Care | 8 Sweet Williams |
| 4 Blewetts | 20 Hearing Services | 5 Sylvia's Exercise |
| 34 Brett & Leni | 24 Jake's Mobile | 10 Tarina |
| 26 Bush Monkey | 29 J C Electrical | 35 T. Hosking Roofing |
| 11 Cafe Riviere | 33 John Andrews | 25 Thurstan Hoskin |
| 14 Castaways | 4 Julia Woodhams | 39 T J Carpets |
| 23 Chimney Sweep | 5 Kim Hopkins | 38 T P Wills |
| 8 CJS (Craig Shepherd) | 6 Lewy's Fish & Chips | 13 Transformations |
| 15 Cliffords Plumbing | 27 Linda King | 9 Webb & Philp |
| 30 Copperhouse Clinic | 20 Little Plumbing Jobs | 32 W. Cornwall Plastics |
| 18 Cornish Arms | 35 Mad Hatter | 43 Winns Funeral |
| 36 Cornmill Studio | 25 Malt Decorators | |
| 17 Cornwall Chiro clinic | 27 MJ Waste | |
| 37 CVC Solicitors | 22 Mobile Barber | Pick up points in bold. |
| 34 Dapper Dogs | 12 Mobile Foot Clinic | Copperhouse PostOffice. |
| 20 Dave Thomson | 7 Mike Thornton | Warrens at Foundry, |
| 39 David N'jie | 31-6 Mr B's | McColls, Hampsons, Old |
| 33 Des Button | 28 One Day Antiques | Foundry Chapel, |



W J WINN FUNERAL DIRECTORS



We are here to help you 24 hours a day

- Funeral Pre-Payment Plans
- Memorials
- Private Chapels of Rest

WJ WINN

Trenwith Terrace
St Ives TR26 1QE

Tel: 01736 793029

WJ WINN

69 Fore Street
Hayle TR27 4DX

Tel: 01736 752124

CHARLES BRYANT & MARAZION FUNERAL SERVICE

North Road, Goldsithney, Cornwall TR20 9JY

Tel: 01736 710318



Part of Dignity plc. A British Company



St Erth Weekly Village Activities

St Erth Concert Band

Tue Methodist Hall
Sylvia Yarwood 01736
752605

St Erth Brownies

Mon St Erth Church
Hall (Old School) Julie Wass 01736
762123

St Erth Guides Tues St Erth Church Hall
(Old School) Caroline Barton 07881
715764.

St Erth Nursery Mon to Fri 01736
755690

**ST EARTH FILM CLUB Sat Feb 11,
Fisherman's Friends: One and All**
*For Saturday March the 18, the film will
have been selected by the audience at the
January 21 film night.* Doors:

7.00pm Film: 7.30pm. Membership cost
£6.00 which includes entry, then it costs
just £3.00 per film. Contact Joyce Darvell
01736 757169

FARMERS' MARKET Sat in the
Methodist Hall from 10.00am – Noon.
Tea or coffee only 50p. Cakes normally
50p to £1. All welcome.

ST EARTH CHURCH SERVICES

Most Sunday services; 9.30am, Parish
Eucharist.

ST EARTH METHODIST CHURCH

Sunday services 11.00am The Chapel Hall
is available for parties, meetings etc. Viv
Hocking on 01736 740345 For
regular events go to

www.sterthmethodists.co.uk

ST EARTH PARISH COUNCIL St Erth
Parish Council normally meets on the first
Tuesday of the month, starting with
community participation at 7pm.

Any questions or comments for the Parish
Council may be addressed to the parish
clerk, 25 Fore Street, 01736 757575, e-
mail: clerk@sterth-pc.gov.uk. Or visit the
website www.st-erth-pc.gov.uk.

STAR INN We are keeping the bar warm
to provide a congenial place for anyone
feeling cold or lonely. A hot bowl of
homemade soup is available free of
charge to anyone, just ask at the bar. We
are still supporting Ukraine with Coffee
and Cake for only £4.50; the total donated



to our appeal to date is £3536.

Quiz Night every Thursday and Sunday
evening and there is Pizza for everyone
and no admission charge. In an effort to
help out with the rising prices crisis we
have come up with a number of special
deals. Telephone 01736 602944 or call in
and collect the February Times for full
details.

EXERCISE FOR THE OVER 50'S

Monday in St Erth Church Hall (Old
School) from 10am to 11am and 11am to
12pm and Friday Morning 8am to 9am.
This is suitable for all fitness levels.
Contact Claire 0779 204 6151 for details.

ST EARTH MEET & EAT Once a month
(Feb 2 Mar 2) St Erth Church Hall Thur 12
for 12:30pm. Main, Dessert, tea or coffee
for £7. Barbara Read;

barbararead21@yahoo.com, 01736
758233. Advance bookings essential.

ART CLASS Methodist Hall on Wed
from 6.30pm to 8pm. Cost £10 per session
with Kate Cameron. Suitable for beginners
or more experienced. 07856 733730.
katecameron10@gmail.com. Some of the
paintings are on display at the Saturday
Market and can be bought.

CHILDREN'S CLOTHES Children's
clothes in the Chapel on Saturday from
10-12 noon. Do come and either take
some clothes for your children, or bring
good clean clothes your children have out
grown.

ST EARTH SEWERS CRAFT GROUP

Meets second Thursday of the month at St
Erth Church Hall (Old School) from 2pm to
4pm. New members welcome. Contact
Kathy Tilby 01736 759943

ST EARTH COMMUNITY CAFÉ St Erth
Church Hall every Friday from 12.30 to
3.30pm. Come and relax in a warm and
welcoming environment. Free hot drinks
and a light lunch available and free Wi-Fi.
Everyone is welcome.

*The St Erth Church Hall (Old School) is
available to hire. It is ideal for community
activities, private parties, wedding
receptions etc. Jill Sharpless 01736
756896 for more information.*

For up to date info current events in St
Erth, visit
www.st-erth.co.uk