

ISSUE 18

& thanks to support  
from your advertisers

IT'S FREE!

AUTUMN ISSUE

# HAYLE PUMP NEWSLETTER



Photograph by Tobi Carver, St Ives Times & Lcho & Hayle Times

## SCOUTS AND GUIDES HELP HAYLE MAYOR DISTRIBUTE DIANA'S FLOWERS.

From 142 bunches of flowers laid around the War Memorial, (and also 2 potted plants & 4 Silk roses) in memory of Diana, Princess of Wales, Duchess of Cornwall, Hayle Mayor Cllr. Shirley Oliver

picked out the best flowers, and with the help of her daughter, Kathy, she made up 9 bunches. With the assistance of Guides and Scouts, these were taken to 9 Residential Homes, St. Michael's Hospital 4 wards, including St.

Julia's Hospice, plus Marie Therese House on Sunday morning, 14 September.

The Guides and Scouts were very happy to carry out this good deed, made more worthwhile by the lovely welcome at the Homes and Hospital, and the happiness it brought the residents and sick people in Hayle.

Flowers which had died and those no good for distribution were buried in a garden bed around St. George's Walk by gardeners Russel and Michael.

Shirley says that she felt that Diana would have appreciated this effort and given her approval to the way we remembered in Hayle.

\*\*\*\*\*

### REMINDER

The Hayle Pump would like to remind readers that items, articles and Public Notices are accepted as personal points of view, and are not necessarily the opinion of the News Letter Group. All correspondents are reminded that all material submitted must be signed with your name and address and if possible a telephone number, for validation, but will not be printed if you do not wish it to be.

Closing date for next issue: 20/11/97

### PUMP EDITORIAL TEAM

Margaret Perkins  
4 Pools Court, Hayle.

Tel: 75 6604

Sarah & Jeff Turk  
Hayle Cycles

36 Penpol Terrace

Tel: 75 3825

Tim Appleton

Jeanette Drew

18 Ellis Way

Tel: 755887

Julie Cook


You can leave news and views, pictures and articles with any of the above team and at Biggleston Hardware, Copperhouse Book Centre and Collectables and last but not least with the "Jolly Bodger".

\*\*\*\*\*


### ADVERTISING

Full Page (130mm x 195mm)..... £30.00  
Half Page (130 x 95mm)..... £17.00  
Quarter Page (63mm x 95mm)..... £9.00  
Eighth Page (63mm x 42mm)..... £5.00  
Sixteenth Page (63mm x 20mm)..... £3.00  
\*\*\*\*\*

**BILLY SUPPORTS THE PUMP**



*Billy's*  
**Barber Shop**



**HAYLE**  
☎ 757631

(opposite Daniel's Freezer Centre)

# **THE CATS' PROTECTION LEAGUE**

**REGISTERED NATIONAL CHARITY No.203644**

## **TRURO & DISTRICT GROUP**

DURING THE MONTHS OF OCTOBER & NOVEMBER THE CPL WILL BE RUNNING ANOTHER SPAYING CAMPAIGN, COVERING AN AREA FROM BODMIN TO THE WEST.

ANYONE REQUIRING A VOUCHER, SEND A STAMPED ADDRESSED ENVELOPE TOGETHER WITH A LETTER STATING YOUR REQUIEMENTS TO:-

**THE CATS PROTECTION LEAGUE  
23, PYDAR STREET,  
TRURO, TR1 2AY.**



**O.S.S.K.A.**



On Tuesday the 17th of September O.S.S.K.A was formed to do something about the problem of teenagers skate boarding in the streets of Hayle. OSSKA stands for Off Street Skate-Boarding Association. We aim to provide a site for skate -boarders of all ages to skate in safety an to also provide them with a site that can be used in all weathers and by skaters of all standards.

We also want to incorporate roller bladers and Bmx'ers also as they need a site just as much. We have formed a steering committee to get things underway. This committee

comprises of Paul Frost, Fiona Macleod, Sarah Johnson (three ex members of the action against incinerators), Peter Hampson town council member and local butcher, Geoff Turk Hayle cycles, Suzy Hall, Alex Simister from P.D.C., and we had two junior members Billy Macleod and Jeff Edwards.

Skate boarding has been around since the Sixties but really took off in the Seventies, infact Cornwall has always been at the cutting edge of skateboarding, many of the first Skate board parks in the Country were to be found in Cornwall. I think the first one in the Country was built up at Watergate Bay in

Newquay, I remember Skateboarding there back in 1976 or 77, then a better park was built at Hollywell Bay complete with a Half pipe and a Bowl section. A bit later an indoor park was built inside the Flamingo night club at Pool (now the site of Safeways) this had one of the biggest Half pipes in the country. Unfortunately for the present day skaterboarders most of these were closed down and built on due to lack of interest during the late eighties, the park at Hollywell Bay was the last to go, filled in to make way for bumper boats and go karts! Skateboarding still carried on, mostly now done

by surfers as a pastime when the surfs not up. A few years ago I noticed that street skaters were coming back in numbers, and if you went into supermarket car parks you were sure to see kids jumping kerbs and attempting to jump trolleys. Unfortunately older people (and that does not count me at 36) tended to not like this, seeing skaters as a nuisance and a danger, this is sad because as a ex-skateboarder myself ( and I have the pic's to prove it and still keep my old board!) I know this not to be true, in fact push bikes on pavements are much more dangerous at the speed mountain bikes move at. Skaters

# **GEOFF'S WINE AND BEER MAKING CENTRE**

47a, Cross Street, Camborne 715708

**also situated at:**

Tarover Road, Penzance 332202

(Road running down from top of Causewayhead to main St. by railway station)

Cornwall's only authorized and licensed stockist of the superb prize winning **SHERITON** range of wines and beers.

We are Cornwall's largest specialist retailer.

Most debit, credit, Amex, Switch cards accepted.

We are open six days a week 9.30a.m to 5.30p.m

(Closed Sundays)

when they encounter people tend to get off their boards and walk past people, some skaters who jump on to benches make a bit of a nuisance but thats because they have nowhere to do their sport, I call it a sport because it needs a lot of skill and fitness to do to even a basic level.

With large numbers of skaters coming up we need a facility for them to get off the street and do something useful. At Mount Hawk near Redruth a purpose built all-weather centre for skating has been built, this is well supervised and has a cafe and first aid facilities, they have been going for 7yrs now and it bring people with cars down from Plymouth. If a sleepy little place like Mount Hawk can do it why can't we?. We have a huge catchment area compared even with Truro, we've more people within a 12 mile radius than any town in Cornwall. People would come to skate from all over Penwith and probably even Kerrier as well. Because unlike Mount Hawk we have train links and bus stops to places any where in Cornwall, and unlike Penzance and St Ives we have the space to build something really good.

So lets get together and give our Youngsters something to be really proud of in Hayle instead of just

# ANGOVE SPORTS

COPPERHOUSE, HAYLE  
Tel: (01736) 752238

FOR ALL  
SPORTS EQUIPMENT  
CLOTHING, FOOTWEAR  
AND FISHING TACKLE

*RACKETS REPAIRED  
AND RESTRUNG*

having a go at them all the time. Also let's bring something good to Hayle, as Hayle is getting really fed up of all the rubbish getting put here such as sewage outfalls and proposed incinerators and recycling plants. We have formed the steering committee to get this going but as its your project as well we are interested in any feed back that you can give us.

Also if you can help us in anyway the building or land that we could use then please get in contact with myself. Paul Frost on Hayle 756810 or Suzy Hall on Hayle 755230 or Geoff Turk on Hayle 753825. Also if any local businesses would like to sponsor the project

or offer materials at a later date please contact the above members. To finish this article I would suggest that the skateboard park be done in two parts with a temporary half pipe being built this Summer coming, to give the skaters something to do straight away and then looking at a bigger on going project to do big time. The small project could be built for under £600 which is not a lot of money, the full scale project would cost in the region of £30,000 this sounds a lot till you think how much Penwith spent on "improving" our roads and making parking spaces that were not needed a few years ago this probably ran into six figures with ease.

\*\*\*\*\*

**WANTED!** Pied Piper to meet Environmental Health Official (strator?) on Black Road Wilson's Pool and Pioneer where many customers await you on a daily basis.

When asked about the rat problem the official(?) on the end of the phone claimed it was not their problem. I can't wait for the first pensioner with a dog with a stomach disorder to be subjected to the full force of the law for not carrying a pooper-scooper

## EULOGY

Of all the sounds in all the land,  
 There is nothing to beat a big brass band.  
 Black Dyke was the very first one I heard,  
 And I remember quite clearly the emotions it stirred.  
 I'm afraid it's wishful thinking, but wouldn't it be grand,  
 To hear more of such good music, and far less of the "canned".  
 To bandsmen past and present, I owe a debt of no small measure,  
 For giving me, over the years, such countless hours of pleasure.

Yorkie.

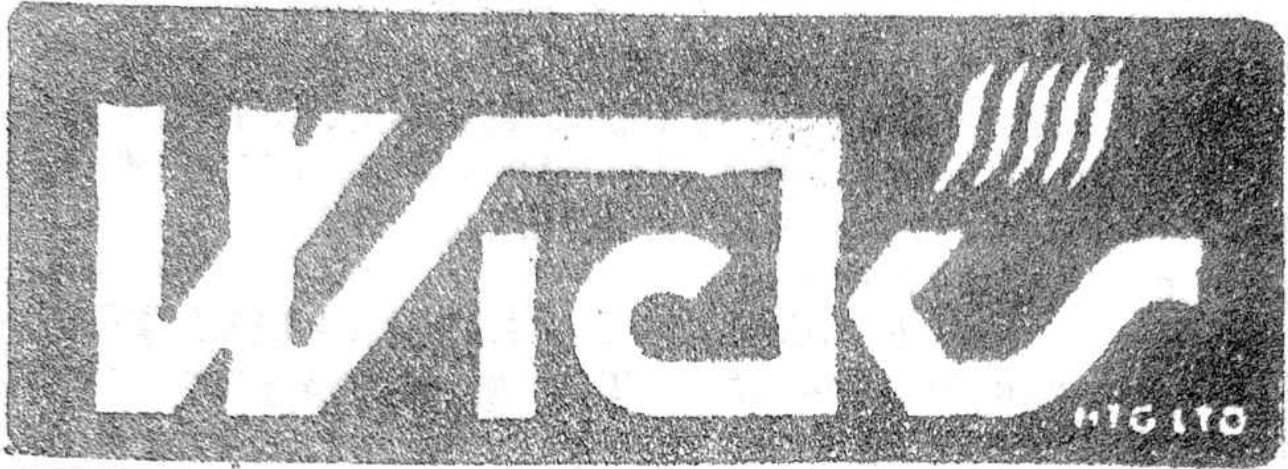


**W.J. WINN**  
 FUNERAL AND  
 CREMATION  
 DIRECTORS  
 N.A.F.D.

Private  
 Chapel of Rest

69 FORE STREET, HAYLE  
 Telephone Hayle 75 2124

TRENWITH TERRACE, ST IVES  
 Telephone Penzance 793029



I.O.P.

CORGI REG.

## Plumbing and Central Heating



Solid Fuel, Gas, Oil  
BATHROOM SPECIALISTS



Telephone HAYLE 753277

### HAYLE HERITAGE FESTIVAL WEEK

A big thank you to Hayle Library! Anne, Debbie, Rhona, Val Sach, with the help of H.A.D.S. and Mark Foreman from Paradise Park, put on a marvellous entertainment for the children during Heritage Week.

Saturday morning 26th. July, Storytime, Cornish Tales, then down to a happy half hour colouring. Monday 28th. great entertainment from Val Sach and her puppets. Val as usual had the kids spell-bound, we would like to see more of you!

Tuesday. H.A.D.S. gave one hour of great pleasure to the children, and kept most of them interested.

Wednesday, the residents of Paradise Park paid a visit to the Library, which the children always enjoy. Thursday saw Rolo the Ringmaster, a great treat for the children and the grown-ups. It was held in the very big Marquee on the Recreation Ground. So town folk and holiday makers were able to come in and watch. It should be emphasised, it was all free! There must have been 400 children and adults, and everybody enjoyed themselves. After the

show there was a soft drink and a lollipop for each child.

Friday the Great Race Workshop with Mark Foreman, who got the children's interest by reading from his own book, explaining how he got the ideas on what to write. He then got them to think of something that would travel on wheels. They drew a bag of crisps, chocolates, an egg, a snake, a star boat and many many other things. It was amazing what they thought up. Saturday morning finished the enjoyable week with "Mish Mash", a variety of entertainment with Rhona and Debbie.

It was a great week, but could we

have Heritage Week a little bit latter, i.e. mid August? It would help to have somewhere to take the children in the middle of the school holidays.

## AN ALTERNATIVE TO THE £1000 BATHTUB

*Hardly seems possible that a homeowner pays an average of £1000 to replace a bathtub! But now, a local business offers homeowners an alternative; a reglazed bathtub using high tech, environmentally-safe, durable materials that a technician can apply to an existing bathtub for 70% less than the cost of remodelling!*

What to do with a dingy, marred, but beloved bathtub? (Or even one that you just don't want to bother replacing?). The first thought is to remove it and install a new one, but that thought quickly vanishes when the contractor's estimates arrive. The cost to replace a bathtub starts at £500 for DIY and can easily exceed the £3000 mark!

Melvyn and Wendy Collier, who recently started Worldwide Refinishing Systems in Hayle offers an alternative: reglazing. It's an option that allows homeowners to keep an existing bathtub - especially the antique type - make it look brand new, and save 70% of

## THE JOLLY BODGER

75-77 Fore St  
HAYLE  
(01736) 752091



BLACKFRIAR®



TREND

Decor

Hardware - Gifts  
and almost anything

the average replacement cost. Worldwide Refinishing Systems is a national chain with outlets across the UK. The company provides reglazing, refinishing and remodelling services for bathrooms and kitchens. Headquarters in Mansfield, Nottinghamshire, WWRS is the nation's largest chain of bathroom refinishers and remodellers.

"Swapping an old bathtub for a new one may seem like a simple job", Melvyn explains, "but it's not. Many times, you take out the tub and the floor doesn't line up with the new tub. So, you have to move the drain, add some tile, and repair the wall the tub sat against. It's messy, and it's a big job. You end up giving up your bathroom for a week until the job is done".

When Melvyn's customers blanch at the price estimates and time required to replace a tub, he can offer reglazing, which is a far less costly and often more satisfying alternative. "When a tub is reglazed, it looks like new and the homeowner has been spared the cost of replacement".

In addition to saving time and money, reglazing offers other advantages. For instance, a customer can select a tub colour to match the surrounding decor of the bathroom. Bathtubs, like other

household fixtures, are frequently available in a limited number of colours. Reglazing also makes a surface virtually mildew repellent. Reglazing is an affordable and desirable alternative, but Melvyn points out that not all reglazers are alike. "If you're going to have a tub or any other surface reglazed, look for a technician who uses a urethane-based glaze. It's NASA-tested and will last at least as long



**WORLDWIDE**  
**REFINISHING**  
**SYSTEMS**

**REPAIR**  
**RESURFACE**  
**RECOLOR**

**BATHTUBS**  
**COUNTERTOPS**  
**CERAMIC TILE**  
**CABINETS**

*FREE ESTIMATES*

**TEL/FAX: 01736 756077**  
**MOBILE: 0467 837175**

as the original surface. Some people in this industry still use the old epoxy or enamel formulas, but they are less durable and prone to cracking. The urethane-based

products are super-strong and flexible".

For more information about Worldwide Refinishing Systems, contact Wendy at Hayle:- 01736 756077.

## HERITAGE WEEK SUCCESS

The Exhibition of photographs, paintings and drawings based on "Hayle'S Natural Heritage", its wildlife and landscape, held at St. Elwyn's Church was a great success.

A Floral Display designed by the Hayle Flower Club echoed the

main theme of the exhibits by following the four seasons, and the Church was full of the vibrant colours of summer and autumn and the softer shades of winter and spring.

This display was supported by the Hayle Heritage Group, the Hayle Project Office Trust and the Hayle Town Forum's Local Community Fund.

The Exhibition, which was the work of "Concepts", the art and design Department of the Hayle Project Office featured wildlife drawings by Dave Philp, a fine display of paintings by U.3.A, the

## The Copperhouse

### Gift Shop

57, Fore Street, Hayle.  
Tel/Fax 01736 752470

Is this the

### "HARRODS of HAYLE"?

An extensive range of Quality Gifts,  
Christenings to Golden Weddings, with  
Carol's Personalized Cards to make  
Someone Feel Very Special.

We stock a large selection of T.G Green - Cornish Blue Tableware  
Porthmeirion Oven & Tableware and Queens - Churchill  
Fine Bone China, Mugs, Cups & Saucers & Vases.  
Myth & Magic (1997 New Introductions)  
Stockist's of South Crofty - Real Cornish Tin Jewellery  
and St. Justin Pewter Jewellery

University of the Third Age, and photographs by Mrs. Barbara Williams.

The photographic exhibits on "Hayle in Bloom Seascapes, The Four Seasons and Swan Lake" were the work of the "Concepts" team, Andrew Szmidla, Dave Moore and Georgina Schofield.

During the week members of the Restoration Committee and volunteers from the Church ran the Refreshments which were available throughout the day. A donation of Clotted Cream and butter was given by the St. Ivel Creamery.

The Mayor of Hayle, Cllr. Mrs Shirley Oliver and her Consort, opened the Exhibition and was a guest at the Concert given on

# NEIL WADE

## MOTOR ENGINEER

CENTRAL GARAGE  
10A HAYLE TERRACE  
HAYLE

MOT TESTING STATION



- \* Servicing
- \* Repairs
- \* Exhausts
- \* Tracking
- \* Batteries
- \* Tyres
- \* Wheel balancing

Home: (01736) 754125

Work: (01736) 756512

SUPPORT LOCAL TRADERS



Thursday 31st July by Hayle Male Voice and Hayle Ladies Choirs.

Simon Morley, who is the asst. organist at Truro Cathedral, also gave an Organ Recital on 29th

July, to a very appreciative audience.

The week's events raised a total of £1000 for the St. Elwyn's Church Restoration Fund.

**COME AND TALK**



**TO THE BAJJER!**

**He's a LOCAL chap!**

**He Can Offer.....**

- \* COLOURJET PHOTOCOPYING**
- \* LAMINATING - credit card to A3**
- \* ECONOMICAL SCANNING SERVICES**
- \* COMPUTER HELP DESK - old or new**  
.....all in HAYLE

**and THAT'S just for STARTERS!**

**as a published ARTIST the BAJJER can offer -**

- \* PET'S and CHILDREN'S PORTRAITS -**  
in sensitive water colour
  - \* CARTOONS OR CARICATURES -**  
naughty not nasty!
  - \* PERSONALLY DESIGNED CARDS -**  
Christmas, Birthday, Retirement etc.
  - \* ILLUSTRATIONS -**  
Technical or for books -  
or just for the Church notice board!
- .....and ALL this in HAYLE! So come to....**

***baджер arts***

**FIRST FLOOR  
HAYLE SHOPPING ARCADE  
(JUST OFF FOUNDRY SQUARE)**

**01736 - 756756**

## ANOTHER NEW BUSINESS IN TOWN WHO PUT THE "JJ" IN BAJGER?

If your name is Jeremy Joslin you may well be known as "JJ" and if your nickname (amongst others!) has been "Bear" a swift stir of those letters can give you a "bajger"!

Jeremy and Stella Joslin are now Hayle people (both of West Country families -Stella was born in St Ives) and determined to make as big a contribution as they can.

"If we need a job done", says Stella, "we always ask around to see if there's someone local to do it - and there's not a lot I can't buy in Hayle shops!" To support these good intentions Jeremy has just started a branch of his business (still running successfully in Newbury, Berkshire) *bajger arts ltd* in Hayle Shopping Arcade.

Just retired as Chairman of a Radio Charity, Jeremy's experience in BBC and commercial radio was of use there as it was for many years in sales consultancy and training. Eleven years ago he managed to combine what this had taught him with his real love - art - which has meant producing anything from full portraits and cartoons through to new corporate images and con-

cepts. "Son number one" Howard(!) runs Newbury operations with his flair for computers and graphic design while Jeremy is now pleased to concentrate on the "arty" side! Younger son Robert is also an artist and has made his contributions. So - whilst Jeremy has talents to offer as a published writer as well as illustrator to "business" he is delighted to offer his ideas to all in Hayle. This also means that as he has colour copying, laminating and scanning facilities for his own use and can share the services at economical prices with all of us. Go and have a chat with the "bajger"!

### ***FOOTSTEPS***

for

**Quality Footwear**

(and Dancewear)

A large Selection  
at Competitive Prices

**Brands include**

Brevitt, Elmdale,

Rock Valley, Finn, D.B. etc.

Wrangler Western Boots and

Other Lines Available to

Order

(inc. industrial)

27 Penpol Tce, Hayle, TR27 4BQ

01736 757735

## SUMMER PLAYScheme

This summer Carew House was host to 27 children who attended the Summer Playscheme. This was a joint venture between the NSPCC and Social Services. Not only did it give local children an activity packed summer, but it gave volunteers and trainee students the opportunity to discover the difficulties and rewards of working with

children this summer.

Many local businesses were very generous, Tempest even invited the children to a tour round the factory and a swim in the private pool. Hayle Lions also responded to a cry for help, which enabled many children who were non-swimmers to learn very quickly - falling off a windsurf or out of a canoe tends to create a sink or swim situation.



some very demanding children.

All in all everyone had a good time (apart from the doctor who was trying to listen with his stethoscope above the noise). Windsurfing, canoeing, roller skating, swimming, drama, art and craft were just some of the activities enjoyed by the

The most valuable aspect of the play-scheme was providing a place for these children and keep them off the street for mornings at least. The Town Council provided facilities for swimming and drama workshops - both of which give children a chance to improve their

confidence and character building. Next year Hayle Out of School Club (HOSC), plan to run an all day playscheme, which should be an even bigger success. Plans by local parents for a new activity club for 7-11 year olds at the Youth Club all go to show that the people in this town are putting a lot of effort in making Hayle a good place for kids to grow up in, by providing resources for children when they are still young.

Alex Ashcroft. NSPCC

**PLEASE SUPPORT LOCAL TRADERS**

**PLEASE SUPPORT  
LOCAL TRADERS**

## **CORNISH HEART UNIT FOUNDATION**

Keep your heart in Cornwall! The C.H.U.F. are trying to raise £500,000, so that you can keep your heart in Cornwall.

They are asking for your help to support an improved unit at R.C.H. Treiske, for better assessment and quicker diagnosis. If you can help with a sponsored event or wish to make a donation, please call John Barnes (Chairman Fund Raising):-01326 561287 or Jim Bannerman (Fund Secretary) on:-01209 831712. As they say:-  
**HELP US TO HELP YOU.**

COFFEE SHOP

CRAFTS

# **THE MAD HATTER**

73 Fore Street, Copperhouse,

Hayle, Cornwall TR27 4DX

**01736 754241**

**Alan and Tricia Russell**

**OLD FASHIONED SERVICE  
PLUS HOME BAKING  
EACH WEDNESDAY (12-2.30PM)  
WE WILL BE SERVING A HOT LUNCH WITH  
ICE CREAM AND A HOT DRINK  
FOR ONLY £2.95  
TAKE-AWAY SERVICE  
NOW AVAILABLE**

# HAYLE PET CENTRE

EST. 1979

FOR A COMPREHENSIVE  
AND COMPETITIVE  
RANGE OF FOODS AND  
ACCESSORIES

## SKYLINE KITES

SPORT KITES  
FOR THE ENTHUSIAST  
AND  
FUN KITES  
FOR THE FAMILY

### C.A.A.H.

When I first heard about C.A.A.H. and its aim to open Cornwall's first free animal hospital, little did I know the impact it would have on me. A charity shop junkie, I was hooked from my first visit to the shop in Hayle. But it was the aims and objects of the charity itself, which interest me enough to volunteer to work in the shop for a couple of hours a week. I'd never done anything like that before, and polished up my halo in readiness for idling away a little time whilst waiting for my saint.

Boy, were my eyes open! Never

C H have I seen a group of people work  
O A so hard, and so cheerfully, against  
P Y all the odds, and for no personal  
P L gain. Their dedication and com-  
E E mitment put my paltry little bit of  
R 7 do gooding to shame. Working  
H 5 with these people is a humbling ex-  
O 4 perience. In my eyes they and many  
U 2 other volunteer workers, are he-  
S 7 roes. Kev, Sharon, Richard, Bob,  
E 7 Sue, get well soon, we miss you!  
H 5 May, Rinda, Nancy, Joan, Sue,  
O 4 Sheryl, Hillary and Di, and all those  
U 2 I haven't met, but who work just as  
S 7 hard, I salute you all.

E 7 There always seems to be a project  
under way. The summer sale has  
just finished. If you missed it, you  
missed the opportunity to snap up  
some real bargains. Where else  
could you buy a new wardrobe for  
under five pounds? And please bear  
in mind that most sale items were  
half their normal price! At full cost,  
we still have the lowest prices that  
I've seen around.

Now in progress are the prepara-  
tions for an autumn raffle, which  
promises to be a raffle with the  
difference! All of the prizes are  
being donated by our generous lo-  
cal traders, who have been wonder-  
ful. My intention was to thank each  
of them by name in this issue, but  
as the prizes are still coming in it  
would be unfair to leave anyone  
out and therefore this month I

would like to offer our heartfelt thanks to all the traders of Hayle, and those from out of Hayle, for your encouragement, generosity, and support, and I look forward to acknowledging each one of you in next month's issue. When the animal hospital and ambulance, are up and running, you should know that your help, since the beginning has played a large part in making it possible. Whoever said that community spirit is dead hadn't visited Hayle recently!

There are so many prizes, it is difficult to know which to mention today, but rest assured a full list will be available as soon as the tickets

are on sale. A new hair style for the ladies and for the men, breakfasts for two, afternoon tea for two, a variety of pet prizes, food, a bowl, grooming with a made to measure collar to complete your pets make-over; this is just a sample of the unusual prizes already received. We think there will be something to tempt everyone.

Hayles town folk, and surrounding areas, are of course the ones who keep the shop provided with stock and I can't overlook the chance to thank you to for your generosity. All animals have the right to the best health care we can offer them. They cannot speak for them selves,

**THE ARK**  
**NEWSAGENTS**  
24 FORE STREET  
HAYLE  
**NEWSPAPERS**  
**&**  
**MAGAZINES**

**FOR DELIVERY THE NEXT DAY**  
**CALL OR PHONE (01736) 753106**

so we are all speaking for them. If the other C "A" "A" H shops receive the same response from their towns as we have from Hayle, then it won't be a long wait for the day when that dream for Cornwall's animal kingdom will become a reality. When there is an issue that matters, the people of Hayle really know how to stand up and be counted! God bless you all  
Name and address supplied

**P.S.** A personal thank you to for all in Joan's cafe for their advice and encouragement to a complete novice. You pointed me in all the right directions and your tea-cakes are pretty good too.

### **WANTED**

#### Original poems about dogs.

I am compiling a book of poems about dogs. If you have written, or could write a poem about a dog/dogs and would like to see it included in a book, please type or print it clearly, add your name and address or telephone number, and your age if you are under 18. Put it in a sealed envelope, and either post to Dog Poetry Book, CAAH Charity Shop, Pool's Arcade, Copperhouse, Hayle. Alternatively, hand it into the shop. All proceeds will be donated to Cornwall's First Free Animal Hospital.

Age is unimportant; there will be a

children's' section. The length of poem is not important, it can be as long or short as you wish. Style is also no important, it can be funny, sad, fantasy, fact etc.

The only two things I ask are that it is original, and is about dogs, or a particular dog. If you don't want your name printed just add....ANON next to your name.

So come on all you talented Hayle people, put pen to paper and help us open:-

### **CORNWALL'S FIRST FREE ANIMAL HOSPITAL.**

**PLEASE SUPPORT  
LOCAL TRADERS**

**UNDER NEW OWNERSHIP**

***A NEW LOOK***

***ST ERTH CATTERY***

**Battery Mill Lane'  
St Erth, Hayle.**

**Tel: 01736 754605**

***Inspection Welcome***

## CHIVALRY

Did you think that the age of chivalry was dead, I'm pleased to be able say it is well and truly alive in Hayle. Three young damsels having just finished "A" levels came to holiday in Hayle, first holiday without parents.

They enjoyed an evening out at Penmare. On leaving, they were followed by a group of young men. They were frightened by the behaviour of them and tried to lose them. The girls didn't wish them to find out where they were staying as they were alone and there was no telephone in their holiday cottage. They

# Des Button

☆☆☆☆

**ELECTRICAL SERVICES  
AND  
SUPPLIES**

Springfield  
33 Clifton Terrace  
Hayle  
TR27 4BP

**HAYLE 753211**



**STANDARD  
AND  
BLACK CAT  
ALL FROM  
BLEWETTS  
OF  
HAYLE**

**19 Penpol Terrace  
Tel. (01736) 753012  
LARGER FIREWORKS**

**AVAILABLE  
FOR  
ORGANISED  
DISPLAYS**

hid themselves in back of the Cornubia pub where they could still hear the group of youngsters looking for them.

When the landlord appeared locking up for the night they were worried their whereabouts would be revealed. However, the landlord took care of them, taking them home in his car and going out of away to avoid the young men gaining sight of them and seeing them safely inside.

A knight in shining armour no less! So a big thank you to him for his gallant act at what was no doubt the end of a long tiring day.

Rosie Hayes

## NOTICE BOARD

Will all prospective customers please note that the Thai Chef Bisto will be closed from the 12 th. October to 6th. November 1997.

\*\*\*\*\*

## Notice Board

Mick and Jo from the Swap Shop would like to thank everyone for their good wishes and their custom, now that they are closing the shop.

Good Luck! God Bless.

Hayle Toy Library is open every Friday from 10am to 12pm. at St Elwyn's Church Hall. Membership is £2 per year and toys are 50p per week. All are welcome.

## Notice Board

A sad piece of news. Mary Louisa Sophia Bartle of 36, Bodrggey Crescent, Hayle, died on Saturday 20th. September 1997, aged 102.

This Bank Holiday Sunday we decided to walk around the pool and watch the gig racing. What enthusiasm - well done to all the teams.

If anyone has a machete for hire I know of one pensioner who would be grateful of its use to help him walk his dog along "The Trams" behind Wilson's Pool.

## PLEASE NOTE

Copperhouse Book Centre is looking for any books on the history of Hayle in good condition.

Many of the rugby pictures featured in the Heritage Display are contained in the club's Centenary Handbook available in the shop at £1.

## ROYAL BRITISH LEGION POPPY APPEAL

Urgently needed, collectors, especially in the Loggans Estate, Guildford Road and St. Erth areas. If you could spare an hour between October 27th. - November 8th. please contact Mr. or Mrs. J Oliver on 753339. Thank you!

\*\*\*\*\*

Caught Hayle Town Band at Constantine the other Sunday evening. They sounded really good.

## THE YOUTH VIEW

What do you, the Youth of Hayle think? What do you want? What changes would you like to see made in this TOWN of yours? For it is your TOWN as well as the grown-ups. Please, Please let the team of the Hayle Pump know. Our address and the many shops "Drop-In" places are in every issue on page 2. The "Hayle Pump" comes out every 2 months. Don't forget, let us know, don't leave it too late!

# HALF TERM COMPETITION

From 25th. October to 8th. November.

**CALL IN TODAY TO COLLECT  
FREE ENTRY FORM**

WIN THE PRIZE  
DISPLAYED IN THIS STORE

BLEWETTS of HAYLE  
19, Penpol Terrace,  
Hayle.  
01736 753012

## THOMAS THE TANK ENGINE & FRIENDS



Oh dear, Thomas has come off the rails! You can cheer him up and win a splendid Thomas the Tank Engine toy from ERTL by colouring him in with your brightest pens. Also, tell us why you like Thomas the Tank Engine and Friends by completing the sentence below. Complete this entry form and post it in the box provided.

The winner will be the person who does the most appealing colouring, and who completes the most interesting sentence as decided by the competition judges.

Britt

ALL THE LATEST CHRISTMAS STOCK NOW IN  
STORE. CHRISTMAS TOYS AND GIFTS, CATALOGUE  
NOW AVAILABLE.

**"SAVE THE EASY WAY, JOIN OUR CHRISTMAS CLUB  
TODAY**



## A BIG THANK YOU

Penwith Council should have a pat on the back for the latest addition to the play area in Hayle Recreation Ground. The children really love it. I have never known so many children queuing up for the next ride on this plaything!

## HAYLE OUT OF SCHOOL CLUB

**PARENTS!!** Do you feel the need for a **safe and affordable** after school hours club for your child? If so read on....Hayle Out of School Club can provide activities such as; Beach days, Tennis, Arts & Crafts, Drama & Fun & Soccer.

Our fully qualified staff are available to provide everything a

child may need after a hard day at school, or day-time during the holidays, from a biscuit to a bike ride.

This is a much needed facility for this area. We can provide a safe environment with plenty of fun as well.

Our prices are so reasonable they will be within everyone's reach. So why not come along and see for yourself.....Getting back to work can be made easier, no more worries about your child becoming a latch key kid!

We are easy to find, right next door to the Health Centre at Carew House.

Contacts for enquiries: Dee on 756810, Vanessa on 757123 or Suzy 755230.

\*\*\*\*\*

**HAYLE ROSE &  
CABBAGE  
HORTICULTURAL  
SOCIETY**

Will be holding their AUTUMN  
SHOW on SATURDAY the 25th  
OCTOBER 1997 at PHILLACK  
CHURCH HALL.

We hope that all you chrysanthe-  
mum lovers and vegetable growers  
are getting your prize winning  
entries ready for showing.

Everyone was very impressed by  
the Floral Art section at the Sum-  
mer Show, and we are looking  
forward to seeing some more of  
these beautiful arrangements.

There is also a section for home  
produce, this is for jams and pick-  
les, so if you have a special recipe  
that you are particularly proud of,  
why not have a go.

The schedules are now in various  
shops throughout Hayle, or you  
can obtain a copy from the Show  
Secretary, Mrs P Thomas, 32 St  
John's Street, Hayle.

If you have any queries please do  
not hesitate to contact her on  
01736 753497 or the Secretary on  
01736 752967.

We look forward to seeing you all  
at the Show.

**WELCOME**

**Copperhouse Book Centre**

28, Fore Street, Copperhouse, Hayle.  
Tel: (10736) 757009

**Local View-**

Greeting Cards\* Book-marks\*  
Coasters\* Hayle Mugs\*  
Framed Prints (various sizes)\*

**Due in the end of October**

New range of Christmas Cards  
including:

The Hayle Gig "ISIS" in action\*\*

H.M.S. "INVNSIBLE" in St. Ives

Bay\*\* January Freeze-Hayle

Harbour\*\* Angarraack\*\*

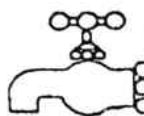
Gwithian\*\* and many other

different views in and around Hayle at:

Copperhouse Book Centre

by

*Barbara Williams - Hayle*

 **GEOFF MCKINNELL**

*6 Clifton Terrace  
Hayle*

**PLUMBING  
&  
HEATING  
ENGINEER**

*Fully Qualified*

*Free Estimates*

**01736 754361**



## THE RESTORATION OF ST. ELWYN'S CHURCH.

The first stage of the work to restore the stonework of St. Elwyn's Church got underway at the end of May, and the work is progressing well.

The Tower has now been fully re-pointed and the roof timbers and windows renewed. The outer wall of Lady Chapel has almost been completed, but, regrettably the funds are not available to undertake the work on the East End of the Church behind the High Altar.

All the guttering and lead-work will be replaced to finish off the

First Phase of the Restoration, which has cost over £60,000.

Some of the money has come from grants, but the Church's Restoration Committee has raised nearly £22,000, through staging Concerts and other events and from donations to their Appeal for Funds.

Recently, the Grand Harvest Draw raised £450 for the Fund.

St. Elwyn's Church was built in 1888, to the design of John D Sedding, an Architect who had connections with the Hayle area. He built the fine terraced gardens at Downes House in 1880 and restored

## PENELLEN HOTEL

RIVIERE TOWANS, PHILLACK.

(BEAUTIFUL VIEWS OVER ST. IVES BAY)

HAYLE (01736) 75 3777

\*ACCOMMODATION (ALL YEAR ROUND)

\*LICENCED RESTAURANT

\*\*\*\*\*

\*CHRISTENINGS \*CLUB DINNER DANCES

\*WEDDINGS \*BUFFETS

\*\*\*\*\*

ALL AT THE RIGHT PRICES

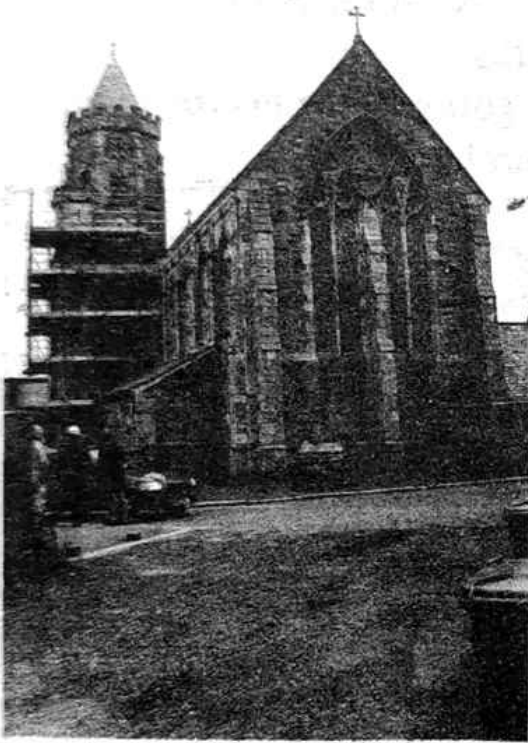
\*\*\*\*\*

Phone for price list (01736) 75 3777

St. Erth's Church in 1873 for Revd. A. W. Mills.

Externally the building is very striking, and its elevated site makes it predominant in the surrounding area. It is designed in the early English style with skilfully blended features from the later Perpendicular and Decorated Periods.

Internal features include some very fine stained glass, such as the "Great West or Friendship Window" dedicated to Frank and Anne



Harvey and Revd. William Horsburgh, St. Elwyn's first Vicar.

A new Church Guide is to be printed shortly, and all the proceeds are going to the Church Fund.

Georgina Schofield, St. Elwyn's Church Restoration Committee.

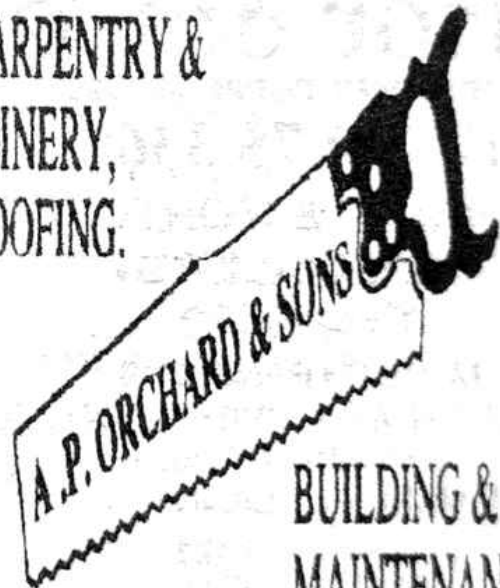
## BELL RINGERS

Recently at Ludgvan Parish Church, The Reverent Arthur Parsons, presented Mr Donald Prowse with a 50 years certificate for bell ringing. Mr Prowse has dedicated these years to Ludgvan Church completing almost 10 years as Vice-Captain, and has been the Captain for the last 20 years, during which time has taught new ringers with dedication and patience.

Ludgvan Church is very fortunate to have a full and enthusiastic team. Mr Prowse said that the Country as a whole, is several thousand bell ringers short.

Apprenticeship Served Professional Tradesmen

CARPENTRY &  
JOINERY,  
ROOFING.



BUILDING &  
MAINTENANCE.

☎ (01736) 756687 - Mobile: 0374 855091

27, Guildford Road, Hayle, Cornwall, TR27 4PP

## HIDDEN PLACES By "Clever Clogs"

In each example the name of a Cornish town is hidden.

- 1 Farmers make hay leisurely around this town.
- 2 Is it a scam borne out of Trevithick's home?
- 3 Andy Capp, 'enry, Neil etc. All came from this ancient borough.
- 4 The Bushel, Stone and Hundredweight, are all measures in this Kerrier town.
- 5 In this sombre age you'll find this quiet village.
- 6 In times past Iv'e settled for a visit to these narrow streets.
- 7 Parallel, anti clockwise, it's all the same near the estuary.
- 8 Downalong, downside, you'll find this mainroad village.
- 9 Tram excursions are not commonplace here on the A394.
- 10 We must renew Lyn's fishing permit here.
- 11 It's all uphill, acknowledged the walker going to the nearby church.
- 12 Master Theobold goes to the village church.

### Prior & Co

FORE STREET COPPERHOUSE

(01736) 75 3368

INSURANCE & MORTGAGE  
SPECIALISTS.



MOTOR • PENSIONS  
HOUSEHOLD • INVESTMENT  
COMMERCIAL •  
FINANCIAL PLANNING

PLEASE SUPPORT  
LOCAL TRADERS

ALLIANCE



• FIMBRA DO NOT  
REGULATE THESE  
PRODUCTS/SERVICES

YOUR HOME IS AT  
RISK IF YOU DO  
NOT KEEP UP  
REPAYMENTS ON  
A MORTGAGE OR  
OTHER LOAN  
SECURED ON IT.

An Approved  
Representative of



## GOOD AS NEW

### DRESS AGENCY

NOW ACCEPTING

## AUTUMN STOCK

A selection of

### Good Quality Clothes

for all the family.

### Hat Hire

For those special occasions.

A selection of

### New Fashion Jewellery.

### Rrapper Hats

Rosemary Rowe\* 753919\*

# CORNISH ARMS

## HAYLE

\*\*\*\*\*

**IT'S BIGGER & BETTER:-**

If you have not been in recently  
your in for a treat!

**More Bar Space! More Seats!  
More Ventilation!**

\*\*\*\*\*

Enjoy an evening in the relaxed friendly atmosphere of the  
locals favourite Pub.

\*\*\*\*\*

With **Thirteen** different brews,  
**five cask ales, always kept to the highest standard.**

There's something to suit every taste.

\*\*\*\*\*

Sample our fine food from sandwiches to steaks.

All at reasonable prices.

\*\*\*\*\*

Special Occasions our speciality.

**Quality & Selection**

at a price you can hardly believe!

\*\*\*\*\*

**86, Commercial Rd. Hayle. TR27 4DJ**

**01736 753237**

## SWAN-UPPING?

On Saturday morning, 20th September a swan crash-landed on to the roof of a garage belonging to Mr. and Mrs. Keane, who live along the quayside behind the ATS garage. They telephoned the RSPCA who said they would send someone along and decide whether



it was necessary to winch the bird to the ground, and then make sure that it was put back where it belonged, in the pool(?)

Our reporter took a few photos of the bird where it had landed just before it decided to "jump" down from the roof, which it did, very ungracefully. It didn't seem to have come to any harm, and so it was coaxed with bread to waddle

along towards the water's edge, and by the time it had reached the marshy land, the representative from the RSPCA arrived, and was delighted to see that it was not necessary for him to climb onto a roof! He made an expert lunge at the bird and carried it down a slope to the water's edge, where it splashed about and swam off with the tide, picking up the pieces of bread it was thrown as a parting gift.

Our thanks go to Mr. and Mrs. Keane for alerting a member of the editorial team of the Hayle Pump, so that we were able to bring you this little local story.

---

## NATURE CORNER

Another bird in distress rescued.

We had had a storm all day and as I was walking up my lane, I looked towards the field which is at the back of my house. I saw three crows attacking a bird. I climbed over into the field and as I approached they flew away. I found a guillemot lying there exhausted from fighting against the gales, (a black and white bird). I picked it up and put it in my garage in a cardboard box with a container of water and put a newspaper over the top so it could not fly out when it recovered. I left it there for about 2 hours, then I told my next-

door neighbour who had a car .  
 It had drunk some of the water and was not getting a bit livelier. We decided to take it to the sea so it could fly back. We parked the car at Gwithian at Strap Rocks and took the box out of the car. The guillemot was flapping it's wings and seemed quite lively so we walked to the edge of the rocks and put the box down. To our amazement , it was empty. I looked back and it was on the ground, so must have got through the bottom of the box, and as I walked towards it, it flew out to sea and away with a squawk of thanks. I was very pleased with myself that I had saved it from be-

coming a meal for the crows, and that it was uninjured from their pecking, and that I had rescued it in time.

Answers to Crossword puzzle  
*(issue 17)*

1. Rhubarb	1	Reopened
6. Enlisted	2	Una
9. Nice	3	Ascended
10. Pi	4	Beak
11. Leek	5	Edifying
12. Kindly	7	Neither
14. Hind	8	Teed
16. Ee	11	Line
17. Nee	12	Kine
18. Een	13	Lye
19. Dreading	15	Lei

**HAYLE ELECTRONIC SERVICES**

HAYLE SHOPPING ARCADE • CHAPEL TERRACE

**TEL/FAX: (01736) 75 4244**

⚙️ ⚙️ TV, VIDEO & SATELLITE REPAIRS ⚙️ ⚙️

**HAYLE'S LARGEST SELECTION OF VAC BAGS,  
 DOMESTIC SPARES, LAMPS, TUBES,  
 AND ELECTRICAL EQUIPMENT**



**WE'RE PLEASED TO QUOTE ON  
 ALL DOMESTIC & COMMERCIAL  
 ELECTRICAL INSTALLATIONS**



## LIFEBOAT BRANCH IN VERY REAL DANGER OF CLOSING

Volunteers are being sought to help run the Hayle branch of the R N L I which is in danger of closing. Derek Rule, secretary of the Hayle branch, is appealing for help from local towns-people as the number of members has declined sharply over the past year, with just a few stalwarts now keeping it going.

### HERITAGE

The people of Hayle are justly

---

PLEASE SUPPORT  
LOCAL TRADERS

---

proud of their industrial and maritime heritage, there are signs that the harbour will at last be restored and many other projects to restore important parts of the town are beginning to show fruit .

### PROSPECT

Referring to long history of the R N L I in the town Mr Rule said "How many therefore will be concerned that just when there is a prospect of Hayle turning the corner, is likely to lose major part of that same Heritage to neighbouring towns by default?" The history of the Hayle lifeboat stretches back for over a hundred years.

## ❧ PICTURE FRAMING ❧

Quality BESPOKE framing service for Oil Paintings;  
Watercolours; Drawings; Prints; Photographs;  
Tapestry; Needlework; Decopage etc.



W. Dyer & Sons Est. 1900

## COPPERHOUSE GALLERY

14, FORE STREET, COPPERHOUSE, HAYLE  
CORNWALL. TR27 4DX Tel: (01736) 752787

Prompt and efficient service from a  
family firm, framing for 50 years in Cornwall

Surely it is unthinkable that Hayle will look the other way and allow a century of history to just slip away.

Volunteers are needed who are willing to offer their time, it may be for as little as a couple of hours a year perhaps to just stand on a street corner with a box once a year, or behind a stall at a coffee morning raise funds.

### **VOLUNTEERS**


He said that volunteers from out-lying areas were also welcome to join as the branch covers the whole of the T R 27 postcode.

Come on people of Hayle and district, it's not your money we are after, just a couple of hours or more of your time.

Anyone interested in helping out can contact Mr Rule on 01736 740729 and chairman Lucy Nixon can be contacted on 01209 715583

## **HAYLE METHODIST CHURCH**

Many of you have visited Hayle Methodist Church, close to the war memorial, for a variety of reasons, but do you know that a number of volunteers come along every Sunday morning to look after the children in the junior Church? They also take time during the week to prepare an interesting, funny and informative lesson with a Biblical



**GLENCOE**

*NURSING HOME*      *RESIDENTIAL HOME*

LONG TERM - RESPITE

◆

DAY CARE AVAILABLE

◆

PRIVATE OR SOCIAL SERVICES FUNDING

*GWITHIAN VILLAGE, ST. IVES BAY*  
*TEL: 01736 752216*

theme. The children get involved with Christmas parties and plays, discos, activity days, carnival, barbecues, sports etc. throughout the year

The children may have friends who come along to us already, and this is always a good opportunity for making new ones. Both Morning Worship and Junior Church last for one hour, between eleven am and 12 noon on Sunday

We would be delighted to welcome you on any Sunday morning  
Ann Hoskins, for Hayle Methodist Junior Church.

\*\*\*\*\*

## The Mines of Hayle

### No 7- Arthur and Shoat

We have looked so far in the series at Mines found within one mile of Hayle. Wheals Shoat and Arthur are actually in the Town itself. The most famous Mine in the neighbourhood was Wheal Alfred [ see Pump No. 10 -May 1996 ] and it was natural that miners would try to find its Copper Lodes in other parts of the area. The southern area was well covered with many small mines in operation such as Wheal Drunk [sic]. To the north was Hayle but this would not stop the enterprising miners trying.

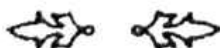
Wheal Arthur and Wheal Shoat were therefore started around the beginning of the 19th century from sites close to the front street. To be honest, they were little more than exploratory tunnels or Adits designed to cut across as much area as possible, neither actually developed into working mines. Wheal Arthur was started from Commercial Square in Copperhouse and was driven into the high bank found behind the present Fish and Chip Shop. It passed under Draceana Avenue and Trevassack and eventually entered a small Mine called North Wheal Alfred

# **BIGGLESTONS**

**TRADING IN HAYLE FOR OVER 100 YEARS  
AS A TRADITIONAL IRONMONGER**



**Please try Bigglestons first for the best  
of ironmongery, hardware, kitchenware,  
paraffin and garden supplies  
available in Hayle.**



**When you're getting ready for spring  
Biggleston's have just about everything**

**SUPPORT LOCAL TRADERS**

whose Burrows are still to be seen on the right-hand side at the start of Strawberry Lane. It was not very successful and eventually ended-up acting as a drainage Adit. The bricked-up entrance to Wheal Arthur used [still is ?] to be visible in the back garden of one of the houses behind Commercial Square. Symons Map dated 1853 shows a shaft under the road between Tre-vassack Farm and the present rail-way. Today the concern is remembered in the name of Prospect Place. If you have stood in Commercial Car park and wondered where the stream of water issuing into Copperhouse Pool is coming from, then you have found the start of Wheal Shoat. This was also an exploratory Adit that passed under Bodriggy House [ where there was an air-shaft], under Bodriggy School and Trevithick Crescent. This used to have a number of air-shafts on it and one was possibly in the present car-park by the Youth Club. The Tunnel eventually finished in a Field beside Burnthouse lane where the Burrow can still be seen. Don't panic if you think that you might live over the top of either of these concerns. Any shafts would be small, shallow and probably filled-in. Today we can only marvel at the tenacity of the miners who would have driven

## Copperhouse Book Centre

28,Fore Street,Hayle.  
Tel/Fax 01736 757009

Browse through a selection of  
Cornish books.

We are anxious to buy any books on  
the history of Hayle in good  
condition.

We will be pleased to order books or  
items of stationery for you.

Stockists of locally made Crafts,  
Gifts, Stationery, Greetings cards,  
Cake Boards and decorations, 1998  
calenders and diaries.

Special order service for students. If  
you want it ,we will do our best to  
get it.

these two Tunnels using their bare  
hands - one of which goes for at  
least a mile underground.

Marshall Hutchens, 27, Ellis Way.

## FORD & VAUXHALL SPARES

- Radiators • Gearboxes • Interiors • Engines
- Mirrors • Windscreens • Tyres • Indicators
- Headlights • Car Shells

MAIL  
ORDER  
SERVICE



HUGE  
STOCK  
AVAILABLE

CASH PAID FOR CARS TO BREAK

(01736) 757003

MOBILE 0378 056390  
2 FOUNDRY LANE. HAYLE



### KEEPING FIT

In the picture are Ashley and Sam who are members of the Taekwon-Do Club which meets each Monday and Wednesday at Hayle Rugby Club. They are in the early stages of working through the various "belt" gradings, which start at white, progressing through to white with a yellow tag, then the yellow belt (which they are wearing in this picture) and then yellow with a green tag, which is quite possibly what they are entitled to wear now, as time has passed since the photo was taken.

Alan Hodgekinson, the instructor, holds both lessons for the young and the older members.

Having been present during part of

a lesson, I can vouch that everyone enjoyed themselves, even the discipline which is necessary in this sport, whilst keeping fit at the same time.

### U3A MAIN SOCIAL PROGRAMME

Oct. 16th. Open discussion when all members are invited to have their say about Hayle U3A.

Nov. 6th. Mrs Rosewarne entertains - Mrs Lilla Miller.

Nov. 20th. "Dolphins & Porpoises" - Dr. Nick Tregenza.

Dec. 4th. Maritime Reminiscences - Capt. Phil Moran.

Dec. 18th. Christmas Get-Together with optional Fancy Dress and/or Fancy Hats. Prizes will be given.

### LEISURE AND OUTDOOR PURSUITS

Swimming every Wednesday morning, meet 10.30 am in Commercial Road Car Park. Contact Alisin Roberts:- 756348

Bird-watching 10.00am Fridays Commercial Road Car Park. Contact Jim Cook:- 755989.

Walks commence also from the car park, where cars can be shared. Thursday 9/10 Prussia Cove. 13/11 North Cliffs & Tehidy Woods. Be prepared for muddy conditions after rain. Boots or strong shoes are necessary and a

waterproof garment. There will be a short mid-morning stop, so bring a drink or other refreshment. No dogs please. all walks are undertaken at the risk of the participant. Contact Eddie & Eileen Fletcher.

Trips of interest will be arranged from time to time.

Chairman Mr Leslie Cockram:-  
757974.

Secretary Mrs.Gwen Bush:-756253

### THE FARM SHOP

Rosalind and Bruce Nicholas have opened a shop in Penpol Terrace selling locally grown produce, from potatos to caulflowers, and

anenomies to wallflowers.

Their inspiration came after taking locally grown produce to various shows and rallies and acheiving a succession of successes. They felt that they lived too far out in the country for people to visit them to sample their freshly picked produce, so they decided to bring it to the people.

Their aim is to sell freshly grown vegetables and plants to the residents of Hayle, in the shortest time possible, so as to keep flavour and the quality intact.

---

PLEASE SUPPORT  
LOCAL TRADERS

---

## **SPECIAL RENTAL OFFERS!!**

### **BRAND NEW**

21 ins Television with Fasttext  
plus  
Long Play Video  
with built-in VideoPlus+  
only £19-19 per month  
3 months initial payment  
12 months minimum contract  
written details on request.



*For these and other offers, contact: (01736) 752269  
MURTS TELEVISION, 32 Penpol Terrace, Hayle.*



# O'DELL SIGNS

OF ALL TYPES

Signwriting, Perspex

Plastic, Engraved,

Magnetic, Posters,

Illuminated signs,

Screen Printed,

Self adhesive signs

COMPUTER CUT

VINYL LETTERING

for Vehicles & Signs

|| COLOUR COPYING ||  
and LAMINATING Service ||

**HAYLE 01736 753656**

1, Turnpike Road, Connor Downs.

## CONTINUED FROM ISSUE 16 KENNETH AND HIS CAR - THE STORY SO FAR.

Very late at night, Kenneth is crossing Bodmin Moor, when he has a flat tyre. Unable to change it he manages to flag down a passing car.....

I explained my plight and said I had no jack. They lifted out their back seat and discovered they had no jack either!! I suggested that if two or three of them lifted up the front end we could do the change without a jack. I loosened up the wheel nuts, got the spare wheel ready and in less than five minutes the job was done. I thanked them

from the bottom of my heart for their assistance. My main concern was getting to work at Carbis Bay Supply Stores by 8 am, where I was employed by my Uncle as a grocer's assistant. As it was quite a time before Christmas I managed to get the Saturday off and I also got the Sunday off from my duties as organist of All Saints' Church, Carbis Bay, where I was appointed fifty years ago, Whit Sunday 1935, (but that is another story.) My deputy on this occasion was my cousin Eileen Martin (Mrs. Edward Rogers.)

As they were replacing the back seat and getting in, I was away and saw them no more. The journey westward passed by without any further ado and soon I reached my home town of Hayle and headed for Trewoone Farm near Tolroy where I was then living with my parents and sister, since returning from California in 1934. I reached the farm between 2 and 3am Monday morning, banged on the front door which was securely locked. After a while a head appeared from the bedroom window and my Father's voice called out - "Who's there?"; my reply was "Let me in". Niceties such as "please" and "thank you" were forgotten. I was cold and hungry and no doubt my father was tired and not too

# Barbour

The best British clothing for the worst British weather



**AUTHENTIC COUNTRY WEAR  
YOU CAN WEAR ANYWHERE!**

**DAVID MOYSE**

**38 FORE ST., HAYLE**

**TEL (01736) 752053**

**WHERE QUALITY & SERVICE STILL COUNT**

# PAUL SHERRIS

FUNERAL & CREMATION

DIRECTOR



PRIVATE  
CHAPELS OF REST

AT:

3, Foundry Lane, Hayle  
Tel: Hayle 75 5177 (24hrs)  
and  
Bedford Place, St. Ives  
Tel: Pz 79 5663 (24hrs)

DAY & NIGHT PERSONAL SERVICE

pleased at being disturbed in the early hours of the morning. After about five or six minutes nothing had happened and I guessed my father, half asleep crawled back into bed. I banged on the front door again only this time a bit harder. This did bring some response; there was no flashing of lights as we were geared to oil lamps and candles. Father came down the stairs and lifted the catch on the Yale lock and I was in like a shot (in the dark). I said "See you in the morning", although morning had already arrived. Father retreated to the bedroom and I adjourned to the kitchen in search of

some refreshment such as saffron cake and some cold drink. I did not hang about long as I was dead tired following my activities of a short weekend, no such thing as "jetlag" in those far away days. Seven o'clock soon arrived and as I awoke, my first thought was 8am as the shop blind would go up at Longstone, Carbis Bay.

After breakfast I went out into the yard where my noble steed was parked, started the engine and shortly left for Carbis Bay. Everything went well until I reached Abbey Hill, Lowertown, Lelant; it was then that I had my second flat tyre with no spare available. I decided there and then to carry on with a flat tyre until I got as far as Harry's Garage, where I left the car with hasty instructions for the repair of two flat tyres and I would collect the vehicle at 6pm or thereabouts. Just at that time the 8.30am bus was passing and I jumped on while still in motion reaching Carbis Bay about half an hour late for work. After a fairly busy day I left work at 6 pm in time to catch the bus to Lelant, where I collected my car and paid for the repair of two flat tyres, the princely sum of five shillings or in today's coinage, two 10p's and one 5p. Later on, at a convenient date, I took the car to the Hayle Garage where my cousin, the late Dick

# HAYLE BOWL

*a great place for all the family!*

- ▲ **TEN PIN BOWLING** - everything you need, including the hire of Bowling shoes and free use of bowling balls
- ▲ **INDOOR & OUTDOOR GREENS** - so whatever the weather you can enjoy a game of flat green bowls
- ▲ **FULL SIZE SNOOKER & POOL TABLES**
- ▲ **FULL & TASTY BAR MENU**

OPEN DAILY 11am - 11pm.

62 Queensway, Hayle TELEPHONE (01736) 752595



Pearce, gave the engine a complete overhaul, this included a valve re-grind, decoke and re-lining the brakes.

During 1936 and 1937 a few distant trips were made in the car. In the Spring of 1936 I took my Uncle, John Martin, to Bodmin, where my cousin Eileen was contemplating the purchase of a car. On our return journey and on reaching Foundry Square, Hayle, the left-hand door sprang open as the car swung underneath the railway bridge and almost decamped my favourite uncle into the road. He was a very corpulent figure and this extra weight on the left side no

doubt caused the door catch to give way, fortunately he stood his ground even though he was firmly seated.

The writer has been driving wheeled vehicles since 1920, a period of 66 years. It must be admitted that the first seven years were unofficial, but it included 5ton lorries, an occasional steam traction engine and a number of Model T Fords. The well known Hayle Grocer, the late John Daniel, aided and abetted the writer, or should I say gave him driving lessons on a Model T Ford.


Kenneth Olds

**SPAR** 

**Country Stores, Hayle**

**Tel: 01736 753327**

**Open**  
**6.30am - 10pm**  
**seven days a week**

 **SWEB KEY CHARGING**



**THE NATIONAL LOTTERY**

**It could be you!**

