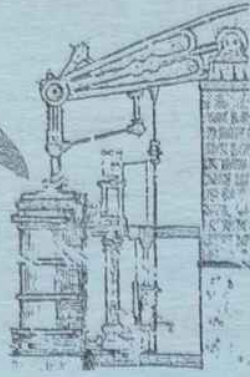


Issue No.

36 Oct/Nov  
2000



# HAYLE PUMP NEWSLETTER

**FREE Copy – please take one. (made possible thanks to our Advertisers.)**



**Pauline Marks and Phyllis Blewett at the Garden Party held at the Marks' house. A fantastic total of £608.20 was raised for RNLI and Angarrack Christmas Lights.**

**\*\*\*\*\*Members of the Pump Editorial Team\*\*\*\*\***

**Tim Appleton**

**Julie Cook**  
8 Hamilton Close  
Hayle 75 5989

**Jeremy Joslin**  
10 Foundry Hill  
Hayle 75 6756

**Margaret Perkins**  
4 Pools Court  
Hayle 75 6604

**Andrew Szmidla**  
Hayle

**Jeff & Sarah Turk**  
Hayle Cycles  
36 Penpol Terrace  
Hayle 75 3825

Printed by Thyatira  
Community Co-operative  
Unit 11, North Quay, Hayle  
Cornwall  
Tel / Fax (01736) 757749

\*\*\*\*\*

You can leave your News, Pictures, Notices, Letters etc., with any of the above team. You can also use any of our drop-off points:

**Colin's Market Garden**  
**Bigglestons Hardware**  
**Copperhouse Bookcentre**

**Colonel Herberts Curio Shop**  
**The Jolly Bodger**

.....

**Advertising Rates**

- Full Page.....( 130 x 195mm)..... £30.
- Half Page.....(130 x 95mm)..... £17
- Quarter Page .....(63 x 95mm).....£9
- Eighth Page.....(63 x 42mm)..... £5
- Sixteenth Page..... (63 x 20mm).....£3

The Hayle Pump Newsletter would like to remind readers that items or articles & public notices are accepted as personal points of view and are not necessarily the opinion of the Newsletter Group. All correspondents are reminded that all material submitted must be signed with your name & address, and if possible, telephone number for validation. This will not be printed if you don't wish it to be.

\*\*\*\*\*

**Closing date for next issue.....20<sup>th</sup> November 2000.**

\*\*\*\*\*

## New Bar to Spice up Hayle

It looks like Hayle is benefiting from another new player in the food and drink scene. The Foundry Bar opened 4<sup>th</sup> August, advertising itself as a modern bar and eatery for all ages.

Set in the infamous old Club Zeus building behind the White Hart Hotel, it has undergone a fabulous transformation. Its Manager, Hayle resident, John Dudley, informs us that customers are in for a rare treat. "the old place had a terrible reputation - we are completely different. This is not a club but a modern bar with funky food and a relaxed atmosphere." Out go Grecian columns, black walls and fluorescent lighting - In comes wooden floors, natural lighting and iron foundry memorabilia.

Recent local visitors to the new venue have marvelled at the transformation. "Many people had not visited here since the days of Country and Western at the Stable Bar".

Inside, the design team at the Little Cornish Pub Co. Ltd., the bar's owners have created a complete mock-up of the familiar Cornish beam engine. In fact the bar has gone to great lengths to bring back many of this listed stables' features lost under years of paint and plaster.

## ROADCRAFT SCHOOL OF MOTORING

Detailed and patient tuition  
from

**CHRIS MILLER, D.T.p., A.D.I.,  
M.I.A.M.**

*Learner, Pass Plus &  
Advanced Tuition*

\*Free Starter Packs

\*Video Loan

\*Theory Test Papers

\*Pre-Test Checks

\*Instruction for Nervous Drivers

\*Night Driving Lessons

\*Motorway Tuition

**0800 0260293**

**01736 752800 (24hrs)**

"With the new Heritage Centre coming soon across the road, we thought local people and tourists alike would appreciate a sympathetic restoration. We have tried to model our interior after the Harvey foundry complex. Granite, ironwork, and woodwork were all features of the old foundry", said Dudley.

On the menu things are also a little different. Street food from around the world features such temptations as Calzone (stuffed pizza pockets) crispy oriental wontons, and Tempura of Local Sole. The amazing thing is that there is nothing on the menu over £5! The chef also informs us that he is not limited to

**GOOD AS NEW**  
**DRESS AGENCY**  
**& HAT HIRE**  
**NOW ACCEPTING**  
**AUTUMN STOCK**  
**& GOOD QUALITY BABY**  
**EQUIPMENT**

**Selection of clothes  
for all the family.**

**RRAPPERS HATS.**  
**ROSEMARY ROWE**  
01736-753919

street food. Formally trained, he welcomes enquiries for weddings, christenings, or any special event for up to 100 people.

In addition to food and drink, the bar's owners insist that the space and light in the building could be used for a myriad of uses. "As we are closed in the day, we would welcome meetings, art classes, groups of any description. We could provide food, coffee and tea, or just the space."

The only setback so far for the Foundry has been people's misconception that it is still a young person's nightclub full of trouble, and that as it is in the rear yard, it is part of the hotel. It is not.

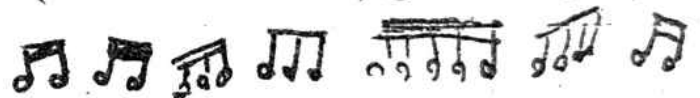
"We are private tenants operating under our own very specific hours of business. Whilst we welcome hotel guests, we are also open to the general public".

*John Dudley*  
*Foundry Bar*

**Competition**  
**Prize – A meal for four**  
**compliments of the Foundry**  
**Bar Café'**

Question: What was the original purpose of the building where the café is situated?

Send your answer on a postcard to the café, the first one out of the hat on closing day (November 18<sup>th</sup>) gets the prize.



**RNLI Musical Evening.**

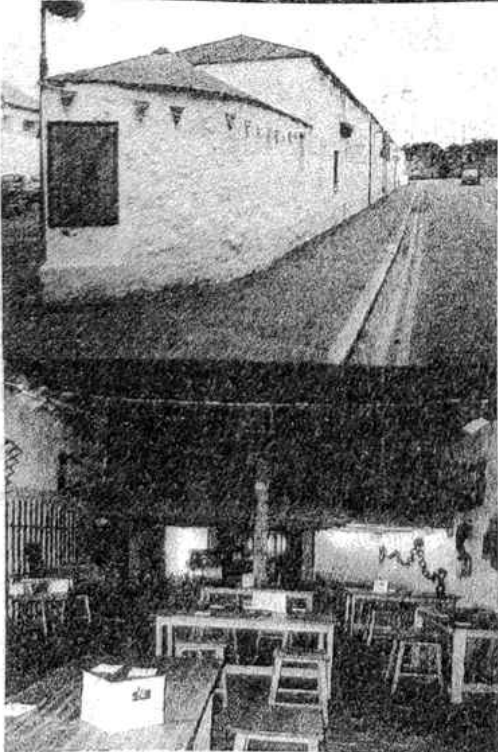
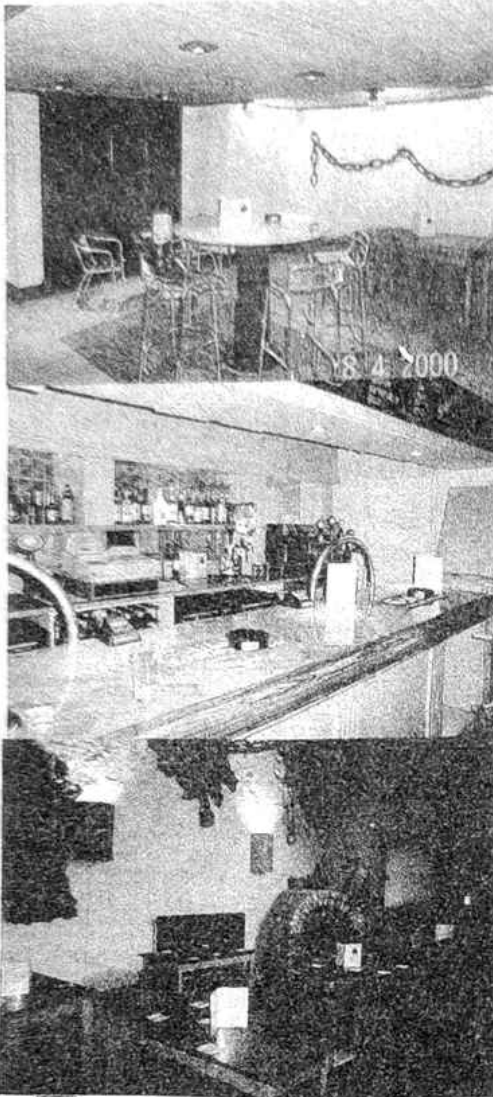
The Hayle branch of the RNLI will be holding a musical evening on Thursday November 9<sup>th</sup> at the Day Care Centre from 7.30pm.

Christmas Cards and Calendars will be on sale. There will also be raffles and refreshments.

All are welcome.

Please come and support this worthy cause.

West  
Cornwall's  
Newest  
Cafe and  
Bar

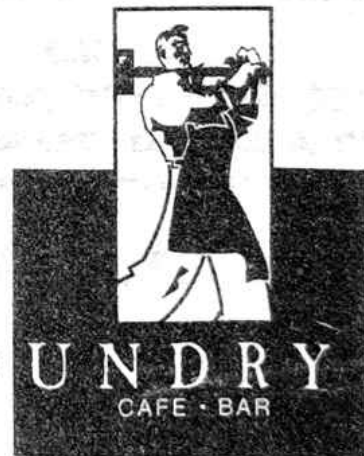


**STREET FOOD FROM  
AROUND THE WORLD**

Calzone - Spring Rolls  
Wraps - Wontons - Kebabs  
-Tempura... and much more!

**ALL UNDER A FIVER!**

- Premium Drinks
- Draft Budweiser
- Over 20 bottles of wine
- Freshly brewed Cappuccino
- Children Welcome till 9pm



(Behind the White Hart Hotel)

Foundry Square, Hayle

Cornwall, TR27 4HQ

Tel: 01736-753334

Open Tuesday to Sunday from 6.00pm

Except Fridays Open from 5.00pm

Fridays FREE NIBBLES FROM 5 - 7PM

**LINE-FREE  
VARIFOCAL  
SPECTACLES  
COMPLETE\***

*FROM*

**£95**

**£95**

**£95**

**£95**

**£95**

**£95**

**£95**

*\*FROM*

**A SELECTED RANGE  
FOR A LIMITED PERIOD ONLY**

**F.L. KEAST**

**F.B.D.O.**

**DISPENSING  
OPTICIANS**

**18 Commercial Road  
HAYLE**

**01736 - 753145**

**and**

**21 Alverton Street  
PENZANCE**

**01736 - 366106**

**Hayle Decorative  
Lighting**

Whilst we are very proud of the display of lights going up in Hayle this Christmas, we regret very much that, due to circumstances beyond our control, we are not allowed to hang anything on the Victorian lamp standards along the King George Memorial Walk. The lights have to be affixed to separate poles, for which we have to apply for planning permission. This we have done, but we are unable to raise the extra expense of £3,000 for cement to erect the poles in time for this Christmas. We are deeply sorry that we cannot complete this project in this special Millennium year. We will, however, be on course to raise the necessary funds to have a great display on the Walk in 2001.

The Committee wishes to thank all the following:

Our Mayor, Mr. Brian Capper, Councillors Owen and Colin Philp, for all their assistance with discussions with Penwith District Council on our behalf and also to Mr. Arthur Roberts of Penwith District Council for all his help in this matter.

Mr. John Clayton of the Hayle Harbour Company for allowing us to use Copperhouse Pool for our raft race held on 1<sup>st</sup> July this year, and for

his assistance in helping us with storage space, as we had nowhere to store our lights. We appreciate it very much.

Hayle Town Council for their help, also Chris Lello and George Brighton for the necessary machinery and manpower.

Hayle Bowl for their hospitality during our meetings.

Hayle Town Forum, Mr. Christopher Harvey of St. Ives Bay Holiday Park, Mr. Paul Westaway of Leo's store in Copperhouse, Mrs. M. Gordon, John Daniels of the Cornish Arms, The Standard Inn, Hayle Rotary Club, Philip and Wendy Chown of Copperhouse Jewellers and Joe and Sue from XL Discounts for their very generous donations.

Nancy and Brian Tuffill for running the Quiz Nights, these are a great success and fun too. On Friday, 15<sup>th</sup> September, £122.50 was raised at the Quiz night, so come along to our next one, which is ON FRIDAY 17<sup>TH</sup> NOVEMBER AT HAYLE BOWL. All the money raised goes towards the lights in Hayle.

Anne Baigent for doing the Quiz Sheets, (on sale in shops in the town) these are great fun and there are prizes. Do send them in even if they are not completed, as there is a prize for the lucky number.



# O'DELL SIGNS

OF ALL TYPES

Signwriting, Perspex

Plastic, Engraved,

Magnetic, Posters,

Illuminated signs,

COMPUTER CUT  
VINYL LETTERING

for Vehicles & Signs

*Embroidery*  
for  
Businesses & Clubs

COLOUR COPYING

**HAYLE 01736 753656**

1, Turnpike Road, Connor Downs.

There are also raffle tickets in the shops at present at £1 each. The prize is a bicycle, value £200, to be drawn at Christmas.

The Christmas lights will be switched on this year by Mr. Chris Lello at 7 pm on Friday, 1<sup>st</sup> December 2000. The venue will be the same as last year, at the front of the Hayle Day Care Centre. We are very happy to have the children from Bodriggy School, Penpol School, St. Piran's School and the Hand Bell Ringers from Connor Downs School who will be entertaining you before the switch on. Hayle Town Band will also be attending. We hope to see as good a turnout as last year,



**DOWN ON YOUR UPPERS?!**

**FEEL A NEW SHOE AT**

**footsteps**

**YOUR LOCAL FOOTWEAR SPECIALISTS**

**Margaret Tanner**

27 Penpol Terrace,

Hayle, TR27 4BQ

**01736 - 757735**

and that you will continue supporting Hayle Decorative Lighting.

We have been overwhelmed by the generosity and support we receive by the people of Hayle. We are so very grateful to you all. We get a tremendous amount of verbal compliments and encouragement from the public and shopkeepers. It goes to show that the Christmas lights are wanted by the people of Hayle, and we will be able to compete with any other town in the County. The Committee is working extremely hard to achieve this aim.

*Hayle Decorative Lighting  
Committee*

**Get Ready!!**

**The Committee will be running their competition for the best-decorated house in Hayle again this year. Entry forms in next edition of the Pump.**

\*\*\*\*\*

*Useful tip:*

*Cut flowers will last longer if an aspirin is added to the water.*

\*\*\*\*\*

\*\*\*\*\*

**Blood Donors Needed –**

**Next Sessions**

**October 11<sup>th</sup> & 12<sup>th</sup>**

**At Methodist Hall**

**Chapel Hill**

**Mount Pleasant**

**Hayle**



\*\*\*\*\* 8 \*\*\*\*\*

## The Siege of O! OKEIP

The story began with a phone call from St. Erth Vicarage asking if the Archive could help with some information on the Old Quay House Inn for a gentleman who had written to them. His letter was then passed on to us and after putting together everything we could find on its history, the information was sent on to the enquirer.

A short time later the Archive received a letter from Peter Burke, giving the details of his family and of the time which they had spent at Lelant during the 1940s. His father was the Headmaster of a London School, which had been evacuated,

and they had brought 900 children down to Cornwall.

It was while Peter Burke was staying at Lelant that he used to collect groceries from a shop in Hayle which had a brass plate over the entrance to the owner's house with the name "O! Oekeip" engraved on it. Peter Burke wrote the name down and tried, without success, to find out more about its origins, but it took another 35 years for the mystery to be solved.

In 1975 he was given some family papers and amongst them he found a diary, a photograph album and some military papers. The diary belonged to Colonel Shelton, the British Commandant of Namqualand, a

# BIGGLESTONS

**TRADING IN HAYLE FOR OVER 100 YEARS**

**Please try Bigglestons first for the best of  
ironmongery, hardware, kitchenware  
paraffin & garden supplies  
available in Hayle**

**01736 - 752219**

**When you're getting ready for Spring  
Bigglestons have just everything**

**SUPPORT LOCAL TRADERS**



# Brookvale

## Residential Care Home for the Elderly

Family run home, by the resident proprietors Mr & Mrs Broadbridge & Mrs Pleasants RGN, which prides itself on a personal and caring environment. Situated in the centre of Hayle close to all amenities.

Private and DSS residents welcome whether short or long stay. Fully registered with the CCC, and a member of the Cornwall Care Homes Association.

- all necessary care & assistance supplied
- large garden and patios
- two lounges & spacious bedrooms
- full 24 hour care & central heating
- weekly hairdresser & chiropodist
- domiciliary services, day care & M on W

6 Commercial Road  
Hayle, Cornwall TR27 4DG  
**Telephone: 01736 753608**

remote district of the North West Cape of South Africa and it was written during the Boer War, which began in 1899.

In particular the diary covered the blockade of this important mining district by the Boer Guerrilla Army in 1901-2. This district included the Copper Mining Towns of NababEEP, Concordia and O!Okeip. These mines were worked and maintained by Cornish miners and engineers who had emigrated to South Africa during the 1850s.

The narrow gauge railway which connected the towns to Port Nolloeth, 91 miles away, was attacked by the Boers in March

1901, led by General Smuts and Colonel Shelton, and his troops were encircled. The town O!Okeip was completely cut off and Shelton's garrison, which included 5,500 women and children, was under siege. His diary gives a graphic account of the 18 months which it took to get help to those defending the town and the Copper Mines and it was this story that Peter Burke spent the next four years researching and, eventually, publishing.

It seems ironic that his quest began in Hayle with a brass plate over a door, and what we would like to know is where is that brass plate now? And over whose door was it once hung?

Hayle has another connection with the Boer War, the small garden on Station Hill is called Ladysmith Gardens, after another more famous siege. Was the original owner of the brass plate a survivor of the actual siege of O! Okeip or part of the relieving forces? If anyone can help to solve this puzzle, will they please contact us at the Hayle Community Archive, Unit 11, North Quay. Tel. 757749.

\*\*\*\*\*

### *WHAT'S THE DIFFERENCE BETWEEN A SAILOR AND A BARGAIN SHOPPER?*

*One goes to sail the seas and the  
other goes to see the sales.*

\*\*\*\*\*



*Hayle Graphics*

*The*  
**PRINT SHOP**

Telephone  
01736 752480

**PRINTING SPECIALIST**  
**PHOTOCOPYING, STATIONERY**  
**FAX AND LAMINATING SERVICE**

42a Penpol Terrace  
HAYLE

Supporting Local Crafts

*Crafty Gifts*

*Extensive alterations have been made to our shop.  
Come and check it out. We have a lovely selection of local crafts.  
These make perfect Gifts for Birthdays,  
Anniversaries & and of course  
Christmas Presents!*

## **Redesign at Hayle Graphics inc Crafty Gifts**

The addition of "Crafty Gifts" to the long-established "Hayle Graphics" at 42a Penpol Terrace has been a success since opening at the beginning of the 1999 season.

Crafty Gifts supports Cornish Crafts and the majority of the gifts on sale are produced within Cornwall. Hayle Graphics, operating within the same shop, continues to provide printing, photocopying, laminating, stationery and fax services as it has done for many years.

After a successful first season with Crafty Gifts, Eric Saunders and his

wife Rosemary decided to redesign the shop to allow them to expand on the range of gifts offered. The 2000 season got under way before the alterations began but these have now been completed without too much interruption. The new shop layout has been very satisfactory, letting in light and space and making it more customer friendly. The owners are

*Unattached?  
Make new friends-  
maybe find romance?*

*Soulmate* 

Introduction Service  
for brochure  
01209 - 712802

very happy with the result, despite the hard work involved with the shop being open as usual during the alterations. They are also delighted with the response they have had from customers. The changes have been approved 100% and everyone has been taken by surprise when entering the new shop layout for the first time.

Rosemary and Eric would like to take this opportunity of thanking all their customers and to encourage anyone involved in craft making to bring in their creations for them to see.



I WANT A TABLE  
WITH A VIEW—  
THAT ONE!

*Slimming*  
WORLD

PENPOL SCHOOL

HAYLE

THURSDAYS

5PM + 6.30PM

TELEPHONE PAULINE FOR DETAILS

01209 - 215653

FIND SUCCESS AT LAST WITH  
SLIMMING WORLD

WHERE IT ISN'T A SIN TO BE OVERWEIGHT,  
WHERE IT ISN'T A SIN TO EAT AND  
ENJOY LIFE !!

### JUMBLE/TOMBOLA

Carmel, at the Mad Hatter, very kindly supplied one of her rooms so that the Hayle Carnival could hold a Bring and Buy sale, this with a Tombola raise £58 78.

We would like to express our appreciation to her, especially as we must have been getting under her feet at times whilst she was serving customers.

Although it was a long day, there was the consolation that we didn't have to go very far for a superb lunch.

Once again Carmel thank you very much, and thank you to all the helpers who gave up their time.

## The Royal British Legion (Hayle Branch)

The month of November for the Royal British Legion is one of Remembrance. This year the service will be held at St. Elwyn's Church at 9.30 am on Sunday, 12<sup>th</sup> November. Afterwards the assembled gathering of the Town Mayor, Councillors and the many supportive organisations will be led by the Hayle Town Band to the War Memorial for a short service of Dedication, and the laying of the wreaths.

Members of the public are also invited to join with us for

refreshments at the ACF/ATC Drill Hall afterwards.

The "Garden of Remembrance", which is situated outside the Passmore Edwards Institute, will also be available for anyone, should they wish to place a poppy or a small wooden cross in the garden. These items will be freely available from a small blue box attached to the Remembrance Board, during the month of November.

The Poppy Appeals Organiser is Jim Oliver, Tel: 753339.

*W.G. Lewis*  
*Royal British Legion,*  
*Hayle Branch*



the **WITCH** report

gives **COLIN'S MARKET GARDEN**  
**TOP MARKS!!**



**OUR HALLOWEEN**  
**SURVEY SHOWS THAT**



**9 out of 10**  
**PUMPKINS FEEL**

**AT THEIR BEST WHEN SOLD HERE!**

**SIMILAR RESULTS WERE OBTAINED WHEN ASKED OF ALL**  
**FRESH FRUIT AND VEGETABLES**

**ASK THEM YOURSELF AT COLIN'S MARKET GARDEN, off FOUNDRY SQUARE**

SILLY SURVEY CONCOCTED BY



BAJGER ARTS 01736 - 756756

# ANGOVE SPORTS

COPPERHOUSE, HAYLE  
Tel: (01736) 752238

FOR ALL  
SPORTS EQUIPMENT  
CLOTHING, FOOTWEAR  
AND FISHING TACKLE

RACKETS REPAIRED  
AND RESTRUNG

## HAYLE CARNIVAL 2000

It seems such a long time ago now, but it really is only two months since Hayle held one of the best Carnivals for a number of years. That seems to be the general consensus of most people.

With the Hayle Town Band and the Breage Silver Band supplying some stirring music, the decorated floats, the Fancy-dress Walkers and Vintage Cars all adding to the spirit and atmosphere of the spectators.

The Lavender Care in the Community decorated their minibus - with some of their members inside - to celebrate The Queen Mums 100th. birthday, with the

Logo "All our Mums are Queens" I think that set the whole pattern - everybody wanted to enjoy themselves! Hayle Camera and Social Club, St Ives Operatic Company and many others all joined in.

The Carnival Queen, Hailie Dean and her Attendants Jessica Brown and Lisa Blewett rode in a horse drawn carriage, followed by the Fairy Queen Robyn Lewis and attendants Jessica Fisher and Sophie Radmore.

The collection from the spectators amounted to £998.13, some of this will be used to stage the Illuminated Carnival on Saturday 2nd. December 2000. Donations will also be sent to many local charities. We would like to thank all those collectors who volunteered, many at the last moment, for their stalwart efforts.

Thanks must also go to all the people who took part, after all it is the participants who make the Carnival lively and fun.

Thanks must also go to our Sponsors, H Tempest, Hayle Harbour Co., David Moyse Clothing, Prior & Co, Spar, The Mad Hatter, Matthews & Co, The Old Globe, Marshalls, The Cornish Arms, Hubbards Fish and Chip Shop.

Once again thanks to our sponsors and to everyone who took part, because without you there

would be no Carnival, with your help we can make it bigger and better.

All those wishing to take part in the Illuminated Carnival on the 2nd December should ring Cathy Williams on 01736 753567 for an entry form. Good Luck!

JRWP

### HAYLE FRIENDS OF ST. MICHAEL'S HOSPITAL

Volunteer helper(s) urgently required to take over the stores and purchasing administration of the Hospital Trolley and Snack Bar services, and to join a very happy band of willing workers

Please contact Helen Caseley, tel: (01736) 75 3427



### FOUNDRY UNDER FIVES

Hello again everyone,

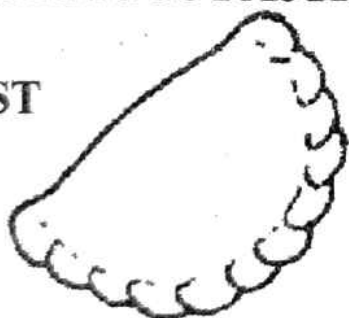
Hope you all had a great summer (if you can call it that!) and have recovered from the exhausting playgroup trip to Shires adventure park. Many thanks to all who helped and supported the Summer Fayre, it was a great success and raised £531.80.

Here at playgroup it's noses to the grindstone already with the staff ensuring that our new intake of children settles well into playgroup,

# PHILP'S

FAMOUS PASTIES

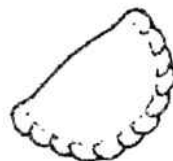
EST



1958

**\*BAKING 7 DAYS A WEEK\***  
FOR THE GREAT TASTE OF  
CORNWALL'S  
PREMIER PASTY MAKERS

WITH OVER 40 YEARS  
EXPERIENCE  
VISIT US NOW  
AT OUR SHOPS AT-



**1, EAST QUAY,  
HAYLE**

**01736 - 755661**



**1, FOUNDRY HILL,  
HAYLE**

**01736 - 753302**



**MARKET PLACE,  
MARAZION**

**01736 - 710332**



**THE SQUARE,  
PRAZE & BEEBLE**

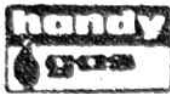
**01209 - 831360**

# THE JOLLY BODGER

75-77 Fore St  
HAYLE  
(01736) 752091



BLACKFRIAR®



TREND

Decor

Hardware - Gifts  
and almost anything

and us committee members organising our fundraising events. Following our decision not to apply for the Government funding for three year olds because of the restrictions it would impose on us, fundraising is all the more important.

Fancy joining the committee? Worried about initiation ceremonies? Scared about using thumbscrews to persuade people to buy raffle tickets? Don't be! We decided that we would give all that up for the year 2000. Seriously, we need committee members. You don't have to hold a particular post on the committee and it doesn't take up that much time. Why not have a chat with one of the current members? The AGM is being held

on Saturday, 14<sup>th</sup> October at 7.30 pm at playgroup, anyone can come along, we would be delighted to see you.

Good and bad news! The boat that was kindly donated to us for the children to play on in the garden is almost ready. However, there has been a set-back caused by some mindless idiots who have vandalised it by smashing its windows!

If you would like to have a go at naming the boat, you can, for a pound a go. The sheet is at playgroup and the winner will be the first name drawn out of the hat.

Just a few reminders for you ...

We are now registered with Pampers for free toys. All we need are your shopping receipts showing that you purchased Pampers nappies, so please bring them to playgroup - every bit helps!

We are now collecting aluminium cans and clean tin foil for recycling, so please save them for us.

Half term is week commencing 23<sup>rd</sup> October.

Parties can be held at playgroup for £6 per hour with a deposit of £5, returnable a week later.

Our Christmas Fayre will be held at Phillack Church Hall on Wednesday, 29<sup>th</sup> November.

Thank you for your continuing support.

*Cheryl Smitheram*  
*Foundry Under Fives,*  
*Harbour View*

Home cooked food in a friendly, relaxing atmosphere.

Bed and Breakfast.

Parties catered for.

Wheel-chairs welcome.

While you're here...

Visit the University of the Third Age Art Exhibition.

Bring along this  
advert ... &  
claim a free drink  
(with food.)

- \* All Day Breakfasts.
- \* Lunch Time Specials.
- \* Luscious Cream Teas.
- \* Packed Lunches.
- \* Flasks Filled.



01736 754241

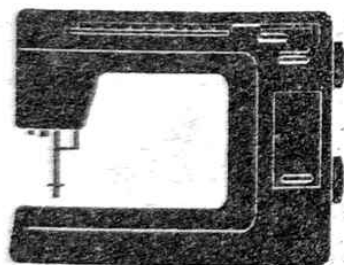
Open Every Day

Mon - Sat 10 - 5.30

Thurs. 10 - 3.00

Sun. 11.30 - 3.00

73, Fore Street, Copperhouse  
Hayle, Cornwall, TR27 4DX.  
(Next to 'The Jolly Bodger')



# Carmel's Sewing Service

Tailored Alterations and  
Repairs

Curtains and Soft Furnishings

Professional Service

Reasonable Prices

Items collected and delivered if required.

Phone Carmel on 01736 754241

or call at

The Mad Hatter Tea Shop.

73, Fore Street, Copperhouse, Hayle.



## Hayle Art Society

Val Baumbach presenting Karim Ali  
With his prize.

"A great treat", "What a joy" - once again our annual exhibition of paintings was held during Hayle Heritage Week. It was good to see so many visitors interested; as well as local people. They came from far and wide - French holidaymakers commented that the "typical Cornish way of life was represented" - others travel down each year from upcountry to see our exhibition, which they say they always enjoy. "The paintings have opened my eyes to the beauty" was another comment in our visitors book. There were some keen buyers, and even some commissions for more paintings!

Such appreciation makes it all

worthwhile, as there is a lot of surprisingly costly behind-the-scenes preparations in staging such an exhibition.

Many unframed works were kindly donated by members to be sold in aid of St. Julia's Hospice, raising £103.40 for the charity. We donated raffle prizes which were won by members of the public. We also exhibited the works of local schoolchildren. This was well supported with 100 pictures and described as "extremely exciting". Their talent was rewarded by prizes of gift vouchers, and a shield for the best entry was won by Hayle

Community School.

Awards were made to the following children after being judged by local professional artist and tutor, Nicola Tilley:

Bodriggy

1<sup>st</sup> - Molly Leong

2<sup>nd</sup> - Karim Ali

Connor Downs

1<sup>st</sup> - Kathryn Horwell

2<sup>nd</sup> - George Bodilly

Hayle Community

1<sup>st</sup> - Isobel Kershaw

2<sup>nd</sup> - Alison Pascoe

Penpol

1<sup>st</sup> - James Marks

2<sup>nd</sup> - Ben Tristral

St. Piran's

1<sup>st</sup> - Charlotte Abraham

2<sup>nd</sup> - Joseph Jelbert

The Hayle Art Society School Shield for the best entry overall was presented by the chairperson of the Society, Val Baumbach and School Governor and Town Councillor, Shirley Oliver.

Hayle Art Society meetings are on Tuesday, 1 pm to 3.30 pm and Wednesdays, 7 pm to 9 pm at the Passmore Edwards Institute, Hayle. Classes are pretty full at present, but we will do our best to accommodate anyone interested in joining us. They will be made most welcome.

*Gloria Jeff*

*Hayle Art Society*

*Hayle Art Society  
Exhibition of Paintings  
At Hayle Library  
Oct 1<sup>st</sup> - 31<sup>st</sup>*



## **Penpol Garage**

# **JOHN MURLEY & SON**

17a Penpol Terrace, Hayle

**01736 757011**

**GET YOUR CAR CONVERTED FOR UNLEADED FUEL**

**WITH OUR FUEL SAVERS**

**GENERAL REPAIRS**

**MIG WELDING**

**TRACKING**

**TYRES FITTED**

**FREE FIT EXHAUSTS**

**MG SPECIALIST WORK**



# CARICATURES

(*& portraits*)

by

*Jeremy*

*ideal*

*Christmas Gift*

*from*

*your photos*

01736 ~ 756756

## Thought for the Day....

If you work hard and do your best,  
You'll get the sack like all the rest.  
But if you laze and mess about  
You'll live to see the job right out.  
The work is hard, the pay is small  
So take your time and sod 'em all  
For when you're dead you'll be  
forgot  
Don't try to do the bloody lot  
Or on your tombstone neatly  
lacquered -  
These three words "Just Bleeding  
Knackered."

*Name and address supplied*

## \*\*\*\*\*NOTICE\*\*\*\*\*

Penwith District Council are trying out a kerbside recycling scheme in the Hayle area, from 10<sup>th</sup> October to 30<sup>th</sup> March 2001.

Participating households will receive information leaflet and sacks on collection day from 3<sup>rd</sup> - 6<sup>th</sup> October.

## ..... Classic Car Show

In July at the Hayle Rugby Ground the 6<sup>th</sup> annual Classic Car Show took place, (as pictured on the cover of the last issue of the Hayle Pump). This event was run by the Rotary Club of Hayle.

Over the past 27 years Hayle Rotarians have taken an active part in caring for Hayle, its people and environment. They has also provided aid for simple, yet much needed, eye operations in India, simple tools to help those people in poorer countries to improve their quality of life, and vital assistance in emergencies throughout the world.

Members of the Rotary Club of Hayle are often asked "Why be a Rotarian?" The answer is - we care. We care about the community in which we live and this is reflected in the many projects carried out by the Rotary Club of Hayle over the past 27 years. It is very likely you have enjoyed a rest on one of the seats we

have placed around the district, and enjoyed shade and shelter underneath trees planted in our tree-planting schemes. Many Senior Citizens have been treated to coach trips to Pantomimes, Christmas lights, Mystery Trips and many other excursion trips around the County.

Caring for the community includes the many Youth Activities we support. Through local schools, the Work Experience Scheme, now a regular part of the school curriculum, Mock Interviews, Youth Speaks and Young Inventor of the Year - schemes started over 20 years ago. We are often reminded by students that their parents remember our advice before starting upon their working careers - a measure of the continuing success the Rotary Club of Hayle provides for the Youth of Hayle.

Already plans are being drawn up for next year's Classic Car Show which we are sure will provide another Saturday afternoon of fun and interest for all.

*F.W. Peter Dawkins*  
*Rotary Club of Hayle*

## **Super Effort!!!**

*Letter*

May I through the "Pump" sincerely thank all of you who sponsored me on the "Supasplash Swim" for Cancer Research on September 2<sup>nd</sup> 2000, whether it

was large or small.

I enjoyed it immensely and am happy and delighted to tell you the total to date which you helped me personally to raise was £1,145.27.

It was a worth-while effort my thanks once again.

**God bless you all.**

*Doreen Nicholas*

*Letter*

People of Copperhouse, seagulls should not eat bread, they eat FISH. You are being cruel to be kind to feed them BREAD. In fact "DO NOT FEED SEAGULLS". Please take heed, you are harming the young ones.

*B.R. Davidson*

*8 Malt House Court*



**MOBILE BARBER SHOP**  
**CARL 0403 438391**

# Classic Barber

**SATURDAY & SUNDAY**  
**AT POOL MARKET**  
**(NEAR CAMBOURNE)**

**Haircuts £3.50**

**Adults or Children**

# Home Farm Foods Freezer Centre

Hayle Shopping Arcade (Pratts Market)

Tel: 75 4239 for Free Delivery

Special Offers only in the Hayle Pump Newsletter

Meals in a Moment all for £1.50 or less

Spicy Meat Balls in a rich tomato sauce with pasta was £1.99 NOW £1.50 or three for £4.20 (saving £1.70)

Cottage Pie Lean minced beef in a rich traditional gravy topped with creamy mashed potato and sprinkled with cheese was £1.90 NOW £1.50 or three for £4.20 (saving £1.50)

Italian Chicken Meal Succulent chicken breast pieces in tomato and mascarpone sauce served with egg pasta was £1.90 NOW £1.50 or three for £4.20 (saving £1.50)

Chicken Korma Chicken breast pieces in an authentic korma sauce with fluffy aromatic rice was £1.99 NOW £1.50 or three for £4.20 (saving £1.77)

Beef in Three Mustards Tender beef in a creamy mild mustard sauce with sliced mushrooms and green peppers with a touch of coriander was £2.99 NOW £2.20 or three for £5.90 (saving £3.07)

NOW !! Roast Mega Meals Lamb – Pork – Chicken – Beef all 500gms. Seven dinners mix them up for only £8.55 WAS £19.95 (saving £11.40)

Special Purchase Price Oven Chips 908g (2lb) Normally £1.15 NOW only 85p or three for £2.55 (saving 90p)

**Offers on for eight weeks or while stocks last. Gift vouchers available.**

**You will not see these low prices at Christmas.**

**\*\*\*\*\*WHY NOT JOIN OUR CHRISTMAS CLUB NOW?\*\*\*\*\***

**Special purchase** Premium Dairy Belgian Ice Cream, Ice Cream Gateaux, and Quality Real Fruit Sorbets. All large 2.5 litre:

**Ice Cream:**

Malaga (Rum & Raisin).....	£6.60
Pistachio.....	£6.50
Cappucinno.....	£7.25
Apple Crumble.....	£6.70
Vanilla.....	£4.65
Strawberry.....	£5.10
Belgian Chocolate.....	£5.10
Lychee & Passion Fruit.....	£6.70
Stracciatella (Vanilla & Belgian Choc. Flakes).....	£6.50

**Sorbet:**

Lemon.....	£4.89
Blackcurrant.....	£9.99
Passion Fruit.....	£6.50
Raspberry.....	£9.99
Melon.....	£9.99

More flavours, too many to list.....

**FREE** can of 330ml Coke- Diet Coke – Cherry Coke – Fanta – Dr. Pepper with each ice cream, gateau or sorbet purchase.

**Ice Cream Snowmen:** Box of six handmade individual snowmen, perfect for kid's parties £6.99 Less than £1.17 each

**Carmela Gateau 750ml.** Vanilla & caramel full cream ice cream with Belgian chocolate covered puffed rice on a biscuit base decorated with caramel flakes only £3.25 for 5 to 7 portions.

**Tropicana 1500ml** Vanilla & Belgian chocolate full cream ice cream log only £3.25 for 12 to 15 portions.

**Arabica 1000ml** Vanilla & intense Mocha ice cream with crunchy layers of "cocoa fantasy" surrounded with Zabaglione dairy ice cream finished with Advocaat and Belgian chocolate coffee beans. **THE BEST** only £4.30 for 8 to 10 portions.

**Chocolate Surprise 1000ml** Vanilla & Belgian chocolate premium dairy ice cream with chocolate chips and chocolate sauce with a thick Belgian chocolate coating only £4.45 for 8 to 10 portions.

**Orange Discovery 1000ml** Full cream dairy vanilla & walnut ice cream with a hint of orange and layers of crunchy biscuit sprinkled with Belgian chocolate only £4.45 for 8 to 10 portions.

**Millennium Ice Cake 1400ml** Cappucinno full cream dairy ice cream with scrumptious almond biscuit surrounded by a thick layer of Belgian chocolate only £7.99 for 12 to 14 portions.

**Tiramisu Gateau** Vanilla & Tiramisu flavoured full cream dairy ice cream on Amaretti biscuits filled with meringue pieces and shortbread biscuits only £5.55 for 10 to 12 portions.

## **The Farm Shop**

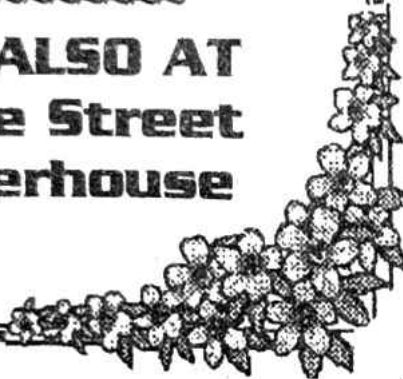
**31 Penpol Terrace**

*Open 6 days a week*

*8.00 - 5.30*

~~~~~  
For all your Local  
Produce, Fruit, Vegetables,  
Flowers & Plants

~~~~~  
**NOW ALSO AT**  
**1 Fore Street**  
**Copperhouse**



## **Hayle Heritage Week**

Over 800 visitors attended events at Hayle Library during Hayle Heritage Festival Week. Fortunately the weather was on our side and all the children's events took place outside on the library lawn.

At the beginning of the week the library organised a variety of children's craft activities. With the 2000 Sydney Olympics only weeks away, Australia and The Olympics were the theme at either ends of the week, finishing with races on the lawn.

Children's entertainers "Betty Stoggs" with her puppets and Richard Ready with his brand of humour and magic were a great hit with the audiences, as was Paradise Park, regular participants during Heritage Festival Week, bringing with them some feathered residents, and giving all the children the chance to ask questions, and to stroke the birds.

A more unusual event was a workshop with children's book illustrator, Mark Foreman, giving the children some insight on how to go about drawing characters for books, and giving them the opportunity to show off their artwork, using their own toys as models.

Adults were not forgotten on our calendar of events, with an interesting talk and demonstration by Christine Dowrick on hand and foot reflexology.

Our thanks must go to all those people who supported the events and who made the week the success it was, and to the staff at Hayle Library and the Hayle Heritage Festival Committee for their help in financing these events.

*Judy Wright,*  
*Community Liaison Officer,*  
*Hayle Library*

\*\*\*\*\*

**Old hippies never die. They  
Just go to pot.**

\*\*\*\*\*

## THYATIRA

Local writer/author Alan Neatby-Smith acknowledges the immense help rendered by this unique concern during the preparation of his last publication. Any budding local writer or anyone interested in printing, would do well to avail himself or herself of these friendly and helpful services.

But unless they act quickly they may find these services no longer available, for the sands are running out. The people of Hayle seem blissfully ignorant of this unique concern dedicated not only to providing modern printing facilities, but preserving the fast diminishing aspects of Hayle in its Archives.

An elderly local writer of local history and comment, Hayle born

and bred, has admitted complete ignorance of its existence. This is a pity because his extensive knowledge of historic Hayle would be immensely useful to the Archive.

All genuine friends of Hayle should be interested in becoming FRIENDS OF THYATIRA, not only for personal use of the facilities offered, but for the help that would be extended to the unemployed personnel who are trained in computer skills. Those seeking computer skills themselves will find a friendly one-to-one service. FRIENDS OF HAYLE, support the printer of the Hayle Pump Newsletter before it is too late.

*Alan Neatby-Smith*

# SPECIAL RENTAL OFFERS!!

## BRAND NEW

20 ins Television with Fastext

plus

Long Play Video

with built-in VideoPlus+

Only £16.95 per month

3 months initial payment

12 month minimum contract

Written details on request



For these and other offers, contact: **(01736) 752269**

**MURTS TELEVISION, 32 Penpol Terrace, Hayle.**

**SUPPORT LOCAL TRADERS**

## THANK YOU!

The staff of Thyatira Community Co-operative and the Hayle Community Archive would like to express their thanks to all who supported and encouraged us through our recent funding problems.

Although we are not completely out of the wood yet, circumstances have improved. We are still seeking further funding to continue our work in the Community, but through the good offices of Paul Green, Penwith's new Community Officer, the outlook is looking much more positive.

The Archive has just finished its Hayle 2000 Exhibition, "Hayle Through One Thousand Years", which was held over for an extra week by public demand and launched the Inaugural Walking of the Historic Hayle Trail, its joint Millennium Project with The Pump. We could not have succeeded in either of these ventures without the support we have had from the people of Hayle.

During the summer Thyatira has been establishing its IT Training Room and can now give help and instruction to those who are absolute beginners, or just needing to revive their IT skills after time away from



## *David Moyse Clothing*

*Your Local Shop  
for*

### *Ladies & Gents Clothing*

*You are welcome to come in and browse*

### *Call us now*



**01736**

**752053**

*New*

*Autumn*

*Stock*

*Now*

*Available.*

work. This, together with the Design and printing Section, CV Service and the Archive are all part of Thyatira's work within the Community of Hayle.

In particular, we would like to acknowledge the help we have had from the Hayle Town Council, Hayle Town Forum and Chamber of Commerce, Hayle Library, the Editorial Team of The Pump, Hayle Community School, and Hayle Harbour Company, plus the good offices of Andrew George, MP, Paul Green and Caroline Sargeant of Penwith District Council, but most of all it was you, the Hayle Community, who keep us going.

Thank you all!

*Thyatira Community Co-operative  
and  
Hayle Community Archive*

## **Copperhouse Jewellers**

Phillip and Wendy Chown would like to thank all their customers for all their kind words, cards and gifts that they received on the arrival of their daughter, Sasha Louise on 6<sup>th</sup> August

They would also like to take this opportunity to tell all their customers that, with effect from 29<sup>th</sup> October (the end of British Summer Time) they will be closing at 1 pm on Thursdays.

## **Sylvia's Fitness Classes**

**Mondays 7.30pm Bums & Tums**

**Wednesdays 6.00pm Steps**

**Fridays 6.30pm Body Workout**

**All classes £2.00**

**Per session**

**All ages, shapes  
& sizes welcome**

**Sylvia 361001**



**All Classes at  
Passmore Edwards  
Institute**

## **Archers of the West**

**If all goes to plan, Hayle will soon have a new sporting facility.** There is a team of dedicated people who are planning to set up an archery club, near to Hayle Football Club. They are planning to start recruiting in the new year, amongst those who will be teaching the sport is Jan Martin, County Champion, who has shot for England in International tournaments, and Andy Latham who is also a County Champion. There will be two fully qualified Club coaches and three assistant Club coaches, so the instruction will be first class. We'll keep you up-dated on their progress.

*S.T.*

# Copperhouse

## Book Centre

28 FORE STREET, HAYLE

**SPECIALISTS IN -  
CORNISH BOOKS &**

*Locally Produced Crafts &  
Cards*

.....  
We will be pleased to order  
any book or item of stationery  
often much cheaper  
than shopping out of town

.....  
**Try us First**

**01736 - 757009**

## Hayle Flower Club

Members of the Hayle Flower Club have been very active during the summer months doing floral displays for local churches, the Hayle Carnival, Floral Shows, and also gardening.

The Millennium Garden for the Visually Impaired, started in May 1999, has been a disappointment to members, as plants purchased and donated by them are continually being stolen. Progress has been slow on the proposed central raised border because of the controversy over the old shelter on the Memorial Walk. We understand that this project has been scheduled to

resume in September.

Five members helped at St. Mary's Flower Festival in Penzance. Jean Rowling organised the event, and with Margaret Carter, Wendy Thomas, Linda Hoskin and Jean Chapman did the large arrangements.

Pam Boase organised the floral displays for St. Elwyn's Exhibition during Heritage Week. The various displays were designed and arranged by: Pam Boase, Beryl Fairfax, Gladys Danbury, Ena Humber, Linda Hoskin, Joy Runnalls, Dorothy Coombes, Jo Sampson, Angela Virgin, Margaret Carter, Maureen Wallace, and Wendy Thomas.

Members provided most of the entries in the Floral Art Section at the Rose and Cabbage Show.

Wendy Thomas gained a cup for most points in the Show, and also won a cup for Best Exhibit in Show. Pam Boase, Margaret Carter, Jennifer Bennett, Jean Bransgrove and Gladys Danbury were among the several prize winners.

Ruth Atterbury-Thomas and Pam Boase made the posies and decorated the Fairy Queen's Donkey Shay for the Hayle Carnival.

Members assisted at St. Erth's Flower Festival by helping to make the pew ends, the floral balls and the floor arrangements. These ladies were: Jean Rowling, Joyce Richards, Ena Humber, Linda

**SPAR**



**HAYLE. OPEN**

**6.30am-10pm,  
SEVEN DAYS**

**A WEEK**

Telephone us on [01736] 753327

**FOOD TO GO**

**NATIONAL LOTTERY**



**FRESH BAKED BREAD**

**SPIT ROAST CHICKENS**



**WE ACCEPT CREDIT CARDS AND GIVE CASHBACK**

Hoskin, Ruth Atterbury-Thomas, Jane Ridge, Gladys Danbury, Beryl Fairfax, Mary Thomas, June Dondall, Jo Sampson, Joan Chapman and Jean Griffin.

The Flower Club meets in the Phillack Church Hall on the last Wednesday in the month, at 7.30 pm. Visitors are most welcome.

*Dawn Goff*

*Hayle Flower Club*

\*\*\*\*\*

*Useful tip:*

*If you have brittle nails, mix two teaspoons of gelatine into a glass of fruit juice and drink every day – you will see the results after six weeks.*

*(Ed. Or eat a square of an undiluted block of fruit fruit jelly every day until an improvement is noticed.)*

\*\*\*\*\*

## **WANT TO LOSE WEIGHT?**

**Do you dream about being slimmer and healthier? Turn your dreams into reality and still eat your favourite foods.**

**Never feel hungry or deprived at**

**Slimming World**

**Every Tuesday**

**Hayle Bowl 10.00am**

**Passmore Edwards 7.00pm**

**Call FAYE 75 7714**

## **Tasty Tuesdays ! (and Thursdays)**

**Every Tuesday and Thursday the Market Café at Hayle Shopping Arcade (Pratts Market) in Foundry will be offering specially priced meals for all Senior Citizens.** Sample items from the menu are cod, chips & peas, or sausage & liver casserole with mash & peas, both priced at £1.95. A cup of tea and a cake is only £1.00.

Go on, give yourselves a treat!



HE WON A TRIP  
FOR TWO TO  
FLORIDA – AND  
WENT TWICE

## Rabbits Out!

The cemetery at Hayle is administered by the Parish Church of Phillack, on behalf of all the community of Hayle and District, regardless of the profession of faith, or the humanist profession of the individual.

Generations of Hayle families lie in these grounds, and now, with the increasing mobility of modern society, new non-Cornish names are appearing within the roll of those laid to their rest here within the shadow of the ancient church tower.

However, as pressure has grown on the need for burial and new tracts of land have had to be included within the cemetery, a new problem has arisen - a problem which we would seek help to remedy from all those within Hayle and District.

The last extension to the burial ground was made to the north side of the church, and reaches onto the towans. This site offers wonderful views onto Hayle Pool and the whole of Copperhouse, Hayle and much of the surrounding areas. However, as it is part of the towans environment, and is adjacent to a site of scientific interest, certain restrictions apply in our administration of this area.

We have monitored an increase in the number of rabbits within this area of the cemetery, and although rabbits pose no danger or harm to the



## COMPUTERS

HAYLE SHOPPING ARCADE  
(off Foundry Square)  
HAYLE

TEL/ FAX

**01736 754967**

[www.second-byte-computers.co.uk](http://www.second-byte-computers.co.uk)

Email:

[sales@second-byte-computers.co.uk](mailto:sales@second-byte-computers.co.uk)

remains of loved ones laid to rest, the sight of numerous rabbit holes near to graves can and does cause distress to relatives. However, as they are the only grazing animal within the towans, the only method of control open to us is to restrict their access to these grounds.

After consultation with the appropriate authorities, it was plain that the only effective way to restrict the numbers of rabbits was to erect a special wire fence, designed for this purpose.

And it is here that we, as church wardens, request the help of the people of Hayle. The cost of providing this very necessary fence is



## Resurfacing & Repairs

\*Basins, Tiles & Shower Trays\*

\*Without Removal\*

\*Colour change\*

\*Over 20 years experience\*

\*All work guaranteed\*

*for free estimate call:-*

**01736 - 756077**

**(0467 - 837175)**

£1,700.00. Now, as a church, we cannot afford to make this investment. We simply have not got the finance. Penwith Council has provided a grant, but we still need to raise £1,000.00.

Please consider making a donation to this project - no matter how small - every twenty or fifty pence piece is a step nearer. And please, if you are a tax payer, consider giving us your name and address with your gift, then we can claim from the government a refund of tax on your gift.

Gifts can either be placed at, or posted to:

The Phillack Church Wardens

The Godrevy Team Office,

St. Elwyn's Church

St. Elwyn's Rise

Hayle

May we thank you for taking the time to read this notice.

*Eve King and Mike Smith*

*Church Wardens,*

*Phillack Parish Church*



After a quiet summer on the reserve, things are starting to hot up as our waders, wildfowl and gulls return on their autumn migration. Flocks of Wigeon and Teal are starting to appear and there have been a number of Med Gulls, up to six in a day. The smaller waders which often form dense flocks at this time of year have been somewhat scarce, however, with very few Dunlin and Ringed Plover. More unusual waders have included Little Stint and Curlew Sandpipers, but, again, in lower numbers than we sometimes enjoy. Undoubtedly the highlight the last few weeks has been the Osprey. This is still around at the time of writing (mid-September) so keep a look out for it. It appears to favour the saline lagoon in Carnsew Pool, and can be seen any time of day diving in from a great height to catch fish there.

*Dave Flumm*

*RSPB*

## Historic Hayle Trail

Way back in June 1998 at a meeting held to decide on projects to mark the Millennium, members of the Hayle Pump Newsletter team decided that their contribution would be to mark buildings and sites of special historical interest in Hayle with a plaque, and to publish a guide to the places listed.

Now, at last, the project has reached completion, the plaques have been made and donated by Malcolm Stephens; Jewsons Ltd. have lent equipment free of charge; and Ray Wyse of Biggleston's the Ironmongers assisted by Jeff and Sarah Turk (members of the Pump team) have put up the plaques.

Georgina Schofield from the Hayle Community Archive has carried out the research and Malcolm Williams has produced superb drawings for the booklet detailing all 25 sites, published by Thyatira, which is now available to buy from Hayle Library, and some shops in the town.

On Saturday, 26<sup>th</sup> August, there was a Heritage Walk around Hayle, organised by Hayle Library and Georgina Schofield to launch the project. Around 20 people took part, and ended the walk with a cream tea at Phillack Sunday School building. Judy Wright from Hayle Library cooked the delicious scones and provided the teas.

## The View from the Steeple

St. Elwyn's has just staged its second Art Exhibition, and visitors to the Church enjoyed the works of John Miller, John Piper, Rose Hilton, Jim Whitlock, Robert Jones, Gerry Plumb, Glyn Macey and (newcomer) Matthew Screaton.

This year's event also included a collection of ceramics by Adrian Brough and other local potters.

Over £5,000 was raised from the sale of these works of art for St. Elwyn's and also for Phillack, who stewarded the ceramics display.

The Hayle Flower Club again decorated the Church with their

**NEIL WADE**  
**MOTOR ENGINEER**  
CENTRAL GARAGE  
10A HAYLE TERRACE  
HAYLE  
**MOT TESTING STATION**



- \* Servicing
- \* Repairs
- \* Exhausts
- \* Tracking
- \* Batteries
- \* Tyres
- \* Wheel balancing

Home: (01736) 754125  
Work: (01736) 756512

SUPPORT LOCAL TRADERS

# ROY HAYES GLASS

ALL TYPES OF GLASS  
SUPPLIED

CUT TO SIZE OR FITTED

*COLOURED GLASS &  
LEAD CAME STOCKISTS  
FAST, EFFICIENT & FRIENDLY  
SERVICE*

FIND US AT THE REAR OF:-

**CENTRAL GARAGE,**

**HAYLE TERRACE**

**01736 - 754023**

**01736 - 752619 (after hours)  
(or mobile) 0788 0530795**

stunning floral arrangements, and the first week was part of the Hayle 2000 Heritage Festival and there were evening concerts, including a superb performance by Camborne Town Band.

Phillack's Millennium Project is to provide a better access to the churchyard which has entailed modifying the path by the Old Vestry to create a ramp for disabled parishioners and visitors. While taking away part of the path by the steps, two skeletons were uncovered lying close to a section of wall which had been dated to around the 10<sup>th</sup> Century. After study and carbon dating by the Cornwall

Archaeological Unit, these early parishioners will be re-buried in the churchyard.

On September 16<sup>th</sup> and 17<sup>th</sup> Gwinear took part in the Heritage Open Weekend, and St. Elwyn's celebrated its Harvest Festival.

Now that "all has been safely gathered in", I shall soon be chirping carols again!

See you all again soon!

*The Sanctuary Sparrow*

## Gala Day at Hayle Swimming Pool

What a wonderful afternoon we all had! The weather was perfect, and everyone had such a good time.

Many thanks to our M.P. Andrew George, for handing out the Prize winning certificates, and thanks go to everyone that came along and gave a hand.

Many of the youngsters are looking forward to another Gala Day, they enjoyed the races so much! And everyone went home with a certificate.

Well done to you all, what a good bunch of swimmers we have in Hayle!

**Is anyone interested in re-forming the Swimming Club? If so, please contact me.**

Mrs Terry Lello

29 Treeve Lane Hayle TR27 5DQ

Tel: 75 7507

## You Just Can't Believe It!

When you stand back and look around, you really think nothing's been done. We are being made, either by apathy or, more likely by design, into a quiet little backwater to Penzance and St. Ives. Instead of the thriving little town we should, and used to be, I should imagine that Penwith or The Planning Department fought tooth and nail to stop the motel development at the entrance to Hayle, and now we hear "Lidl's" are coming. How long was that delayed!

Are our Councillors interested in getting things for Hayle other than Bird Protection areas?- and you

know my opinions on that - two peewits taking precedence over two thousand people!

Just a small proportion of the cost of the work to the Jubilee Pool and the front in Penzance would have put a roof on our swimming pool. Why are we the last in line?

Give me 20 stout Cornish lads, an architect, and a construction engineer, with funding, and we could have our own Eden Project on show for all our passing thru' visitors, and for the use of our own people, who, by the way, pay for these things but never get 'em!

Our rates should be coming back to us, not funding other areas and other people's aims, or - if that's the way

# HAYLE BOWL

*a great place for all the family*

TEN PIN BOWLING

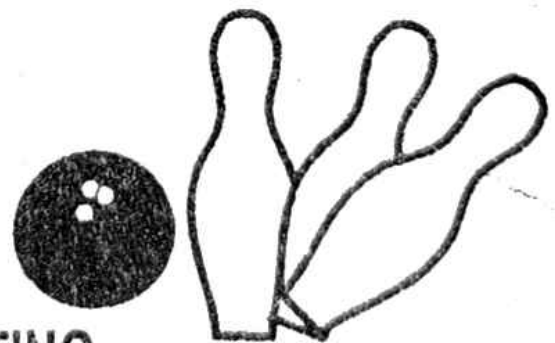
FULL & TASTY BAR MENU

SNOOKER & POOL TABLES

AIR HOCKEY & VIDEO GAMES

LASER CLAY & TARGET SHOOTING

INDOOR & OUTDOOR BOWLING GREENS



62 QUEENSWAY, HAYLE Tel: 01736 752595

it works - why isn't some of their money coming to Hayle?

Just remember, our local MP lives in Hayle - why isn't he fighting for more facilities for us (unless he likes peewits). A little nudge-nudge-wink-wink still goes a long way.

Anyway, enough said - Her Indoors is shouting "The Pasties 'r' going cold"

Cheers

*Blaster*

++++  
**Please note: Thai Chef will be closed 8<sup>th</sup> Oct until 22<sup>nd</sup> Nov.**  
++++

**Des  
Button**  
☆☆☆☆

**ELECTRICAL SERVICES  
AND  
SUPPLIES**

Springfield  
33 Clifton Terrace  
Hayle  
TR27 4BP

**HAYLE 753211**

## Compass Holidays

**I was very pleased to be invited to the launch of a brand new business in Hayle, Compass Holidays.**

The launch was held at our very own Penellen Hotel, Riviere Towans, thank you to Peter and Jeanette Berare for their hospitality, a very warm welcome, as usual.

Partners in the new company, Brian Sidwell and Jayne Mansfield, have recently commenced a booking agency that deals with extending the tourism season, and also finding accomodation for people from all over the country, and beyond!

Best wishes to you both, I know a lot of hard work has gone into the initial stages, now you are up and running, long may it continue!

Good luck,  
Cllr. Terry Lello  
29 Treeve Lane  
Hayle.

*Letter*

The Hayle Carnival Parade was a marked improvement on the last one I saw, the only music I heard were the two bands and last float.

May I suggest that on a parade you need loud music, something people know, and with some rhythm, like Steel Bands, Mardi Gras, Brazilian. Even the bands looked and sounded as if they were on Church Parade.

*B.R. Davidson*  
8 Malt House Court



W.J. WINN

FUNERAL & CREMATION DIRECTORS  
PRIVATE CHAPELS OF REST  
24 HOURS SERVICE

69 FORE STREET  
HAYLE  
01736-752124

&

TRENWITH TRCE  
ST. IVES  
01736-793029



## Hayle's Fire Brigade!

Around 1923 Hayle had a fire engine, or should I call it a fire appliance? It consisted of a pair of large wheels about six feet in diameter, each side of a drum, on which a hose was wound. This was mounted on a chassis with provision for a pair of shafts to be attached, to harness a horse. On the rear was a platform for the firemen to ride on. There was also provision for a "T" bar attachment for it to be manually propelled, if a horse was not available.

It was housed in the building behind Jory's builders and decorators shop, now "The Jolly Bodgers". Mr. Jory had a pony and jingle (trap), which he hired out by the day. The horse stood in for fire duty during the week, when not being hired out. I can remember this contraption charging up the road with the fire crew hanging on for dear life, with the driver standing on a little platform across the shafts cracking his whip, 37

yelling at the poor horse to get there before the fire was put out! (They were only paid to put out the fire). The water came from a stand pipe from a fire hydrant, if they knew where it was!

I remember a little house and kissing gate about halfway along the lane below the pond at Copperhouse (where Horace Berry of Berries Radio Copperhouse used to live). The pond is now drained and was used for several years by Thomas Brothers for concrete blockmaking. When a small fire occurred, the appliance couldn't get there as the house was just below the pond, so a bucket chain was improvised, using all the buckets from householders in Beatrice Terrace, with the promise of new buckets for old! (Regrettably this was not honoured!) The fire was extinguished, with much jollification, until the helpers learned their only reward was a pint at The Cornubia. Most of them suffered blisters on their hands, and from cuts in other

*Apprenticeship Served  
Professional Tradesmen*  
PVCu FASCIAS  
CARPENTRY &  
JOINERY  
ROOFING

A. P. ORCHARD & SONS

BUILDING &  
MAINTENANCE



01736 756687

07787 148571

27 Guildford Road, Hayle,  
Cornwall, TR27 4PP

places from sliding down the gravel bank!

Another instance was a fire at Crowle's Garage, when an apprentice, Donald Gilbert, who was well-known for his aquatic achievements, attempted to light a blow-lamp and when it caught fire he flung it from him, but unfortunately in the wrong direction - under some oil drums! A fire was soon established, and within minutes the Fire Brigade was charging up the road. All hell let loose! The dear old horse was covered with sweat, and a crew member fell off outside the Cornubia Hotel and was taken up to St. Michael's Hospital with a

broken arm. However, the fire was extinguished, and Hayle settled down once again to its utopian state! It was the last recorded fire. And probably the last time it was used, as it was stood down soon after. But the speed of this remarkable engine and crew was never exceeded by the Camborne Fire Brigade who took over their patch!!

There could be no call on the Brigade on Sundays, as the pony was hired to pull a jingle. It was a standing order by my father before he had the garage, to transport him to Cury, near Helston, as he was courting my mother at the time!

As a matter of interest, my father had the first car in Hayle, and used it as a taxi. This no doubt superseded "Topsy" the horse. It's an old Cornish saying "Love can draw further than dynamite can blow!"

*Charles L. Crowle  
Penare, Riviere Towans*

## Home Library Service

Housebound residents in Hayle will be given greater access to library facilities with the launch of a Home Library Service. The new service will offer either transport to a branch or mobile library, or delivery of books to homes. The scheme is a partnership between Cornwall

Library Service, Social Services and the WRVS. The aim of this new service is to give house-bound readers as much choice as possible in gaining the full range of library services. People interested in using the Home Library Service, or in becoming a volunteer should contact Hayle Library on 01736.753196

*Judy Wright*

*Community Liaison Officer*

*Hayle Library*

\*\*\*\*\*

*Useful tip:*

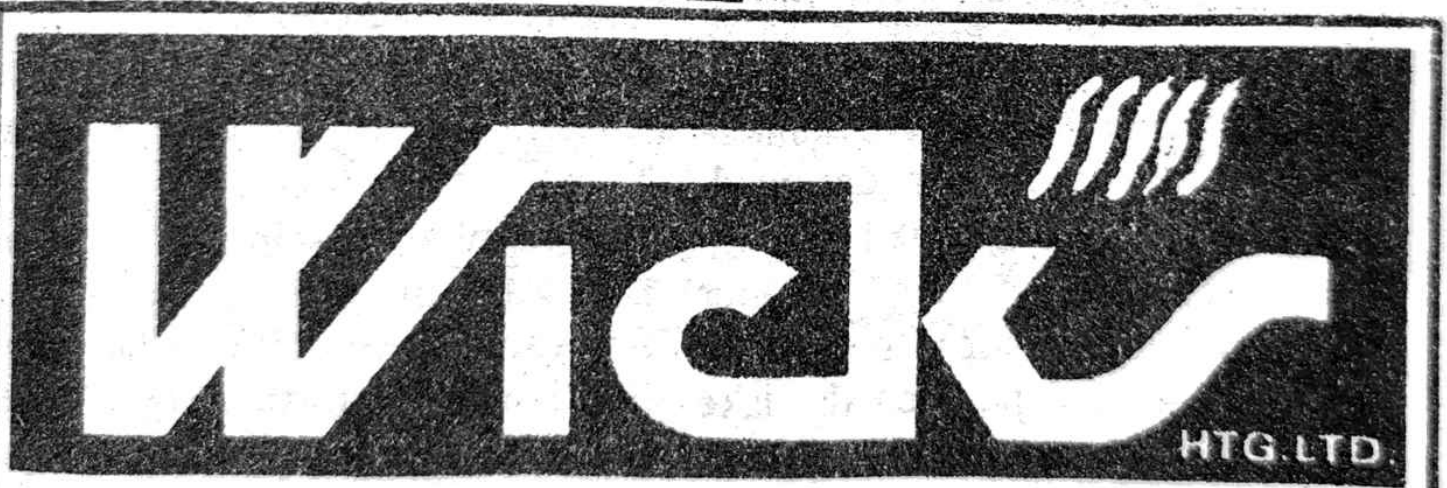
*To clean long-stemmed glasses and vases, drop in a couple of balls of wire wool, add some washing-up liquid, cover top and shake vigourously and rinse out with warm water.*

## Extract from "A Short History of Hayle" by Charles L. Crowle

I haven't researched Harvey & Co. in this short history of Hayle as most people know about them anyhow. I thought that the Copperhouse Co.'s engineering skills were never credited with the publicity they deserved. In fact there wasn't a lot written about them.

I will mention a few of the lesser-known facts about Harvey's Engineering.

The first self-propelled road carriage, called a Fire Carriage was built by that great Cornishman Richard Trevithick. He had all the



 **CORGI**      **REGISTERED**      **IOP** 

**PLUMBING, CENTRAL HEATING  
& BATHROOM SPECIALISTS**

**GAS, OIL, LPG, SOLID FUEL, AGA, RAYBURN  
BOILER SERVICING FOR HOME,**

**TEL/FAX 01736-753277 HAYLE**

parts cast and machined at Harvey's. He married the third daughter, Jane Harvey in 1797. John Harvey died in 1803, and the business was carried on by his 28 year old son, Henry, who lived at Foundry House with his unmarried sister Elizabeth. In 1824 Henry opened the White Hart Hotel, which was managed by Jane Trevithick, to accommodate his clients. The Hotel is now the Masonic Hall, which stands beside the present White Hart Hotel (opened 1838).

The years between 1843 and 1849 were taken up with Harvey's most important commission. The Dutch Government decided to drain Haarlem Meer (Lake) an area of water 14 x 8 miles, between Amsterdam and Leiden. A pump of huge proportions, not heard of before, was required for this massive undertaking. An engine was designed, made and cast in Hayle Works with a 12ft cylinder. This cylinder casting weighed 25 tons. It went to work in 1845 and pumped the lake dry in 1852. It pumped 200 gals of water per stroke. It was the eighth engineering wonder of the world. And made in Hayle. The Dutch people have made it a National Monument and a tribute to the Cornish Engineers. Unfortunately many people are not aware of this tribute, and unaware even of its existence.

The pumps that pumped out the

Severn Tunnel were made by Harvey's. Six 70in. pumps and boilers, two 65in. and two 4in. were required, as a spring developed and threatened to drown the men and destroy the tunnel.

Several ships were built in Harvey's Shipyards. The Cornubia was built for the Hayle to Bristol run in 1858. This gallant little ship was sold to the Confederates and joined the American Civil War. She had a service speed of 10/11 knots which was exceptional in those days, and could easily outrun the ships of her day. However she was ambushed, hit with a torpedo and destroyed. She was the talk of the maritime world at the time, how she could slip away with ease when she was gun-running. There was an order out for her to be sunk, as she was an embarrassment to the American Navy!

The Ramleh, a ship of 4,000 tons Dwt was built on the stocks at Hayle Shipyard in 1891. It was the biggest hull built in a small shipyard, even to Clyde standards. This was only one of many. Perhaps, God willing, I will compile a list of all the ships built by Harvey. There are some very interesting ones, especially, special application ships to carry the Cornish boilers. And the huge engine parts. In one particular case a ship was almost lost because of the deviation of the compass by the magnetic field of the iron cargo of

engine parts she was carrying. A one degree off-course would mean an error of one mile in every sixty miles she covered.

The Red House as the locals called it, was where the passengers waited for the ship to Bristol to arrive. Its name was The Steam Packet Inn, but I can't recall anyone calling it that. It was closed in 1917 as a Hotel, but continued to be used by several families for flats. It was on the edge of the quay, various seafaring men fell in from time to time. The exit from the sluice was immediately below, but I can't recollect anyone being drowned, they all managed to get fished out somehow by their mates, probably finding the bar still

in motion! There were a few casualties with sailors falling off the gangway. There was an old parrot who would screech out "It's your turn next" to the discomfort of the sailors. Or "Sink sink sink the bloody ship Jack" "The wind is getting up Jack" etc.




## Fungus Foray on the Towans

Sunday 22<sup>nd</sup> October 2 – 4pm

Fungi are everywhere. Discover which species grow in the sand dunes with Barry Candy, mycologist.

Meet: Loggans Moor lay-by on the B3301



**PROSHARP**

PROFESSIONAL SHARPENING  
TEL/FAX 756162

**LOCAL SHARPENING SERVICE**

SCISSORS KNIVES  
HANDSAWS (recut)  
T.C.T.CIRCULAR SAWS (retips)  
LOPPERS GARDEN SHEARS  
HAIR CLIPPERS PINKING SHEARS  
CHAINSAWS HEDGE TRIMMED  
SECATEURS AXES  
CYLINDER & ROTARY  
ROUTERS TRIMMERS  
PLANERS

Drop-off points: Bigglestons & Jolly Bodger

ICE CHISELS & BITS  
DRILLS

++LOTS MORE

PROSHARP  
29 Prospect Place  
Copperhouse  
Hayle  
TR27 4LU  
TEL/FAX 756162

**\* & TRADE SHARPENING \***

# Copperhouse Factory

## 1798-1799

Near fifty years are past and gone  
Since Copperhouse factory first  
went on  
Much blossom and much fruit were  
seen  
When yielding many years has seen  
When with work this factory rung  
It was good times for everyone;  
The mines throughout the neigh-  
bourhood  
Produced ores both rich and good  
With plenty work for boys and men  
Hundreds were employed then.  
The fires shining day and night,  
The flues and furnaces were bright.  
Six days a week and often more  
The moulders did their work so sure,  
Fitters and pattern makers too  
Both day and night had much to do.  
Cylinders and cylinder cores  
I've seen them built and cast by  
scores,  
And massive engines made complete  
And often many tons their weight.  
The blacksmiths and the boiler men,  
Did use their hammers active then;  
The engine men worked with  
delight,  
And kept the steam up day and  
night.  
The lusty hammer then was  
sounding  
Its echo through the place  
rebounding.  
While ropers spun their whim-ropes  
strong

Or made their cables firm and long.  
Ships too were built and sent away  
To trade upon the wide wide sea.  
The drivers with their noble team  
With wagons loaded oft were seen.  
The quays were filled with copper  
ore,  
And coal for mines a mighty store  
And trade and commerce did prevail  
Within the port and town of Hayle.  
The Company were were rich in  
lands,  
From Ventonleague to Riviere Sands  
But some are dead, some gone away  
By this the factory did decay.  
The life of trade then soon was gone  
The day of sorrow followed on.  
Man after man, boy after boy,  
Were doomed elsewhere to seek  
employ.  
The quays were sold and houses too  
Such changes none in Hayle ne'er  
knew.  
The factory likewise will be sold  
And farms and house we are told.  
How many families now are left  
With fathers of their work bereft?  
Near four hundred souls are led  
To suffer for the want of bread.  
Forty four years I laboured there  
The truth to you I do declare  
And now my age is sixty nine,  
T'was there I spent most of my time.

*Author unknown*

*Found amongst the papers of  
C.Crowles' father.*

# *Copperhouse Jewellers*

*(formerly Pipers)*

*Stockists of fine quality gold and silver jewellery*

*New ranges include:*

*JAVA CLASSIX  
HANDMADE NEPALESE  
SOUTH CROFTY TIN  
SOS TALISMAN  
THE WILDCAT COLLECTION  
(Body Jewellery)*

*Comprehensive range of watches including:*

*LORUS  
CITIZEN  
LIMIT*

*Jewellery, watch and clock repairs undertaken  
Valuations for Insurance and Probate purposes  
Special Commissions  
Cornish Lines accredited*

*COMING SOON FOR CHRISTMAS:*

*Jackson & Leif  
Gold and Silver Jewellery from  
The Liquid Silver Company*

*61/63 Fore Street, Copperhouse, HAYLE TR27 4DX  
01736 753203*

# CINNAMON TREE



*Indian Take-away*



67 FORE STREET • HAYLE • CORNWALL • TR27 4DX  
Telephone • (01736) 759171/754108  
[www.cinnamontreeindian.co.uk](http://www.cinnamontreeindian.co.uk)

## OPENING TIMES

APRIL TO SEPTEMBER: 5.00pm - 11.00pm

OCTOBER TO MARCH: 5.30pm - 10.30pm

*7 days a week including Bank Holidays*

## SET MEAL

£8.95

2 Popadom

### *Starter*

Tandoori Chicken • Chicken Tikka

Lamb Tikka • Sheek Kebab

### *Main Courses*

Chicken Bhuna or Chicken Kurma

Mixed Vegetable Curry • Pulau Rice

Naan Bread • Salad • Mint Dip

*The Management reserves the right to refuse any person or persons.*

Cheques accepted with bankers card only • Sorry, no credit cards

Special arrangements for parties