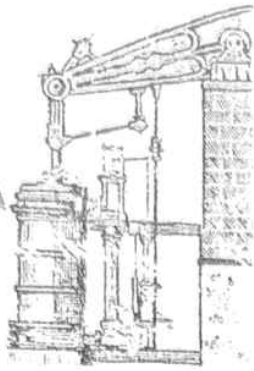
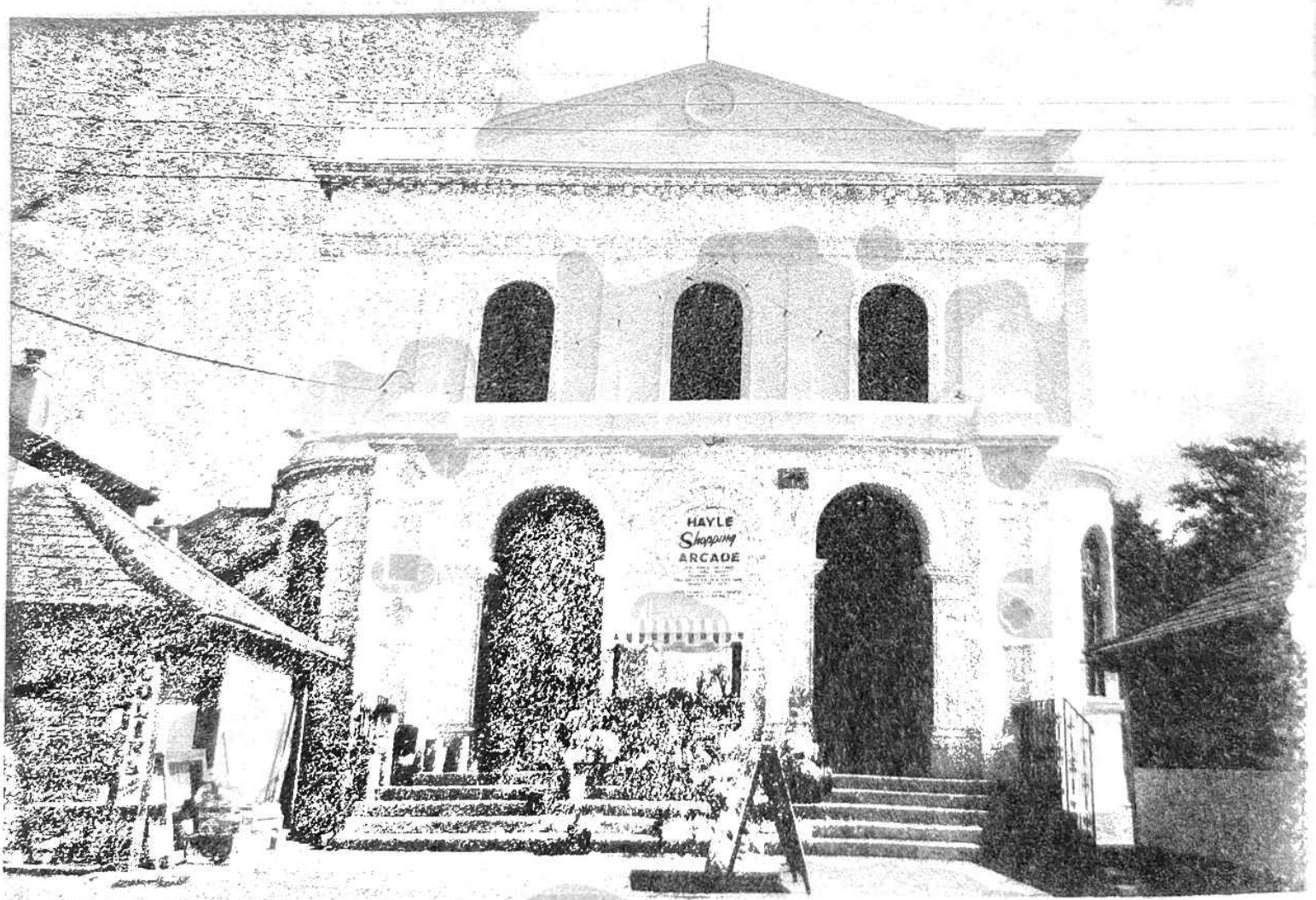


Issue No.
38 Feb/ Mar
2001



HAYLE PUMP NEWSLETTER

FREE Copy – please take one. (made possible thanks to our Advertisers.)



Hayle Shopping Arcade, our new home. (the old Foundry Chapel)

Hayle Pump Newsletter

Unit 15
Hayle Shopping Arcade
Chapel Terrace
Hayle TR27 4AB
Team Members:

Tim APPLETON

Julie COOK
8 Hamilton Close
Hayle 75 5989

Jeremy JOSLIN
Bajjer Arts
10 Foundry Hill
Hayle 75 6756

Margaret PERKINS
4 Pools Court
Hayle 75 6604

Lee SHIRLEY
Hayle

Andrew SZMIDLA
Hayle

Jeff & Sarah TURK
Hayle Cycles
36 Penpol Terrace
Hayle 75 3825

You can leave your news, pictures, notices, letters etc. at our unit in the market, or with any of the team. You can also use any of our drop-off points:-

Biggleston's Hardware,
Colin's Market Garden
The Jolly Bodger
Colonel Herbert's Curio Shop
David Moyse Clothing.

Advertising Rates

Full Page.....(130x195mm)..£30.00
Half Page.....(130 x 95mm)..£17.00
Quarter Page...(63 x 95mm).....£9.00
Eighth Page...(63 x 42mm).....£5.00
Sixteenth Page(63 x 20mm).....£3.00

Reminder

The Hayle Pump would like to remind readers that items, or articles and Public Notices are accepted as points of view and are not necessarily the opinion of the Newsletter Group. All correspondents are reminded that all material submitted must be signed with your name and address, and if possible, telephone number for validation. This will not be printed, if you don't wish it to be.

Closing date for next issue:
20th May 2001

Please support local traders.

A Home at Last!

We are happy to announce that we have now moved to Unit 15 at Hayle Shopping Arcade (the old Pratt's Market) where you will be able to leave your articles, letters, adverts etc. (You can still use all our regular drop-off points listed on page 2)

Our new office is thanks to the owner of the market, who has rented the unit to us at an affordable price. We are all volunteers on the newsletter, it is entirely funded by the advertisers and because of this we are able to distribute it throughout Hayle free of charge. We are also helped by the fact that Thyatira print it for us at cost as a contribution to the community.

We hope to be open to the public by the beginning of March as there is a lot of re-furbishment needed, but will be pleased to meet you there after that. And if anyone would like to join our team, come and tell us, fresh faces are always welcome.

Since the new owner took over, the market has taken on a new lease of life with many businesses coming in, so why not have a look around? There's:

Bill's Plaice – fresh fish

BK Video shop – video hire

Colin's Market Garden - fruit & veg.

Da Dogz – designer clothing

Farm Fresh Foods – freezer

*Apprenticeship Served
Professional Tradesmen*
PVCu FASCIAS
CARPENTRY &
JOINERY
ROOFING



**BUILDING &
MAINTENANCE**



01736 756687

07787 148571



*27 Guildford Road, Hayle,
Cornwall, TR27 4PP*

centre

Hayle Electronics – electrical goods etc.

Hayle Healthfoods

Market Pet Shop

Market Second Hand Shop

New Age Party Time – cards & gifts

Nurserytime – Baby shop

2nd Byte Computers

Our sincere apologies.

There was a mistake made in the last issue of the Pump under the heading "Prosperity in Hayle" by Christine

**LINE-FREE
VARIFOCAL
SPECTACLES
COMPLETE***

FROM

£95

£95

£95

£95

£95

£95

£95

***FROM**

**A SELECTED RANGE
FOR A LIMITED PERIOD ONLY**

F.L. KEAST

F.B.D.O.

**DISPENSING
OPTICIANS**

**18 Commercial Road
HAYLE**

01736 - 753145

and

**21 Alverton Street
PENZANCE**

01736 - 366106

Windegaard. We left out some of the text so part of the article did not make any sense.

It should have read:-

Though it is necessary to concentrate on the young (for they are our future), there is no need for anyone to be left out. In this present competitive age people need to learn new skills, but also manual workers have an important role to play to make a community function well and prosper.

**Hayle Amateur
Dramatic Society**

Presents

**Snow White and the
Eight Dwarfs?**

Now that's different I hear you say
Where did he come from on that day?
The dwarf whose genes are not the
same,
And who doesn't even know his name?

Our prince has come his troth to plight
But falls in love with fair Snow White.
The slave of the mirror just wants to be
free,
But the Queen won't break the mirror
you see.

Our nurse is after a man please,
And chases every one she sees.
Binfer and Gopher, our clowns are here,
So come on down and give them a
cheer.

Our Queen is evil through and through
And plans Snow White some harm to do.

But in the end, love conquers all,
And our wicked Queen is in for a fall.

There's plenty of fun for all to share,
With strange people popping up here and there.

So don't miss out, join in the fun,
Our Pantomime's for everyone.

So now all that's left for you to do,
Is buy some tickets for the family and you.

All you need to know is listed below...
Well don't just sit there..go on now go!

Dates: Wednesday February 21st –
Saturday February 24th

Start 7.30pm Saturday matinee 2.30

Place: St. Elwyn's Church Hall

Prices: Adults ...£3.00

OAP... . £2.00

Children £1.50

Tickets can be obtained from:

Bigglestons Hardware

Ian Gratton Garage

Copperhouse Pet Supplies

For more information or to book tickets please ring Ken & Lin

Townend on 01736 75 7633



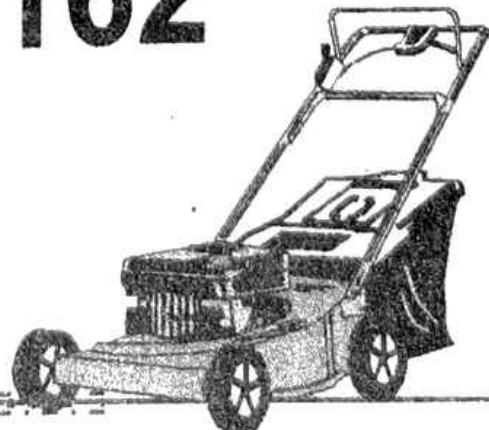
"If it's BLUNT it's JUNK!"

PROSHARP.....YOUR LOCAL

**SHARPENING SERVICE & SAW DOCTOR
FOR ALL GARDEN, HOUSEHOLD & WORKSHOP ITEMS**

IN HAYLE 756162

**Weekly collections from
Bigglestons Hardware &
The Jolly Bodger**



Hayle Decorative Lighting

We have had an enthusiastic response from everyone in the town in regard to the Christmas lights, and we were very pleased with the display in the new Jobcentre window (the old SWEB showroom next to Daniels) of letters and paintings by the children. Thank you all for your support.

The winners of the Best Lighting awards were:

Bungalow: Mr. Barrett 31 Ash Drive
House (1st) Mr. Palmer 17
Trelawney Place
(2nd) Mr & Mrs Cheal 18 Penpol Tce
(3rd) Mrs Bennetts 12 Copper Tce.

The Chamber of Commerce awards for traders in the town.

1st John Lloyd & Co.

2nd Loggans Fish Bar

3rd Bigglestons

Pub. Cornubia

Business Premises: Tempests

Our next task is to light up the Memorial Walk, and hopefully work will start in the next two months. The poles will be not only for holding up Christmas lights, but also they will be used to erect tourist information boards, hanging baskets, banners and flags etc.

Fundraisers scheduled for this year – put these dates in your diaries! –

Quiz nights Friday 6th April

BIGGLESTONS

TRADING IN HAYLE FOR OVER 100 YEARS

**Please try Bigglestons first for the best of
ironmongery, hardware, kitchenware
paraffin & garden supplies
available in Hayle**

01736 – 752219

**When you're getting ready for Spring
Bigglestons have just everything**

SUPPORT LOCAL TRADERS

Friday 8th June

Friday 3rd August

Friday 5th October

Raft Race Sunday 22nd July

Bike Ride Sunday 9th September

We will also be running some raffles throughout the year, our next one we hope will be a Wyevale voucher. We did this last year and it was our most popular raffle, so we will run it again, do buy tickets, you never know it could be you this time. And of course our collection tins are in all the shops, last year we had a grand total of £635.84 from these tins, thank you everyone. Also generous people made donations to us, a total of £1355 in all.

The bike raffle in December was won by Stephen Prisk of Sea Lane, who chose a bike for his wife.

The Beetle Drive on January 19th at Hayle Bowl, which was run by Jeremy Joslin, was a great evening and all the proceeds were donated to us. A total of just over £75.00 was raised. Many thanks, Jeremy, for taking time out from your busy schedule to do this.

R. Horwell, Chairman Hayle
Decorative Lighting Committee
Tel: 01736 75 2597

HELP: Does anyone have a storage heater or oil-filled radiator they would like to donate to Thyatira Community Co-operative? If so please call them on 757749.

ROADCRAFT SCHOOL OF MOTORING

Detailed and patient tuition
from

**CHRIS MILLER, D.T.p., A.D.I.,
M.I.A.M.**

*Learner, Pass Plus &
Advanced Tuition*

*Free Starter Packs

*Video Loan

*Theory Test Papers

*Pre-Test Checks

*Instruction for Nervous Drivers

*Night Driving Lessons

*Motorway Tuition

0800 0260293

01736 752800 (24hrs)



ICAN'T GO DOWN
THE PUB TONIGHT.
IT'S THINGYS
WEDDING
ANNIVERSARY

Nurserytime

A new Nurserytime outlet has opened in Hayle. This established family business has been trading at Cornish Market World, St. Austell for three and a half years, and has now opened in Foundry Shopping Arcade, Hayle. We will be stocking new and reconditioned prams, pushchairs and buggies from well-known high street and mail order outlets, and cot-beds, cots, highchairs and car seats direct from the factory. Also available is nursery equipment from the most famous name mother and baby shop in the country, at up to 50% off r.r.p., as well as a full range of top quality

baby clothing and everyday accessories at competitive prices.

Our aim is to sell quality at low prices, and if you cannot see what you are looking for, please ask as we may have it elsewhere.

Initially the opening times will be Wednesdays to Saturdays, 9.30 - 4.30, or at other times by appointment, with a view to extended hours later this year.

Free local delivery for larger items and cot and buggy hire is also available.

All enquiries are welcome on 07765 10394 or 757105 (evenings). Ask for Sue or Paul.

NURSERYTIME

*Foundry Shopping Arcade,
(Pratt's Market)*

Selling new and ex chain store baby equipment

Prams, cots, high chairs etc.

Plus a full range of baby clothes.

Open 9.30am - 4.30pm

Wednesday to Saturday

or any other time by appointment

07765 10394

01736 757105 (evening) ask for Sue or Paul



Hayle Meanderers - Winter Walks 2001

If the continuous rainy weather during the past months has made you feel restricted and depressed, then I believe that the Hayle Meanderers may have the solution to your troubles, if you join us on our weekly walks, which have proved a great success throughout the short winter days.

Although we have clocked up a few wet and stormy Wednesdays, the magic of Cornwall has always made every walk an experience which we have enjoyed. The club has been in existence for 5 years now. The anniversary was celebrated a Dinner at Tregenna Castle Hotel last September.

There is no club charge to join the Meanderers, and, as the name suggests, we don't go out to break mileage records. Our main aim is to enjoy the scenery and visit interesting far from the madding crowd, and away from all traffic and busy beaches.

During the summer months we do try to enjoy a few swims. With so many coves to choose from, we can always find a quiet spot.

We meet at the carpark by the Library at 10.30 am with a packed lunch and suitable clothing for a hike. We share cars and costs and have travelled to Land's End in one



direction, or Lanhydrock or Fowey in the other.

Recently our destination was Fowey, and although the weather forecast was formidable and overnight there had been torrential rainstorms with thunder and lightning, 19 stalwarts turned up with their wet weather gear, ready to tackle anything nature could throw at them. When we reached Fowey and parked our cars we noticed that the paths were dry and the sun was shining. We headed through the narrow streets of the town to Readymoney Cove. People think this sounds like smugglers, but it is actually derived from the Cornish



O'DELL SIGNS

OF ALL TYPES
Signwriting, Perspex
Plastic, Engraved,
Magnetic, Posters,
Illuminated signs,
COMPUTER CUT
VINYL LETTERING
for Vehicles & Signs

Embroidery
for
Businesses & Clubs

COLOUR COPYING

HAYLE 01736 753656

1, Turnpike Road, Connor Downs.

language and means Rocky Ford.

Then we climbed up the wooden stairway to St. Katherine's Castle on the point, which was built by Henry VIII to protect this fabulous area against the Spanish Armada. As we walked around this lovely coastline and climbed the cliffs, we could see Dodman Point and Rame Head in the clear air, and also Naval frigates on the horizon at target practice.

Soon we dropped down to Polridmouth Bay which was the scene for Daphne du Maurier's famous book Rebecca, and the site where Menabilly Watermill once stood.

Here we stopped to eat our lunch before following the track inland

past Menabilly Farm, which was used for "The Birds", a famous Hitchcock film of the Du Maurier story.

We walked around the tiny church at Tregaminion with its masses of snowdrops nodding in the woods, and then we took the footpath through the farmyard, with its hissing geese, and cows with their suckling calves.

Across the fields, we encountered our first muddy patch by the brook, before climbing the valley to Trenant and Lankelly Farm to drop back into Readymoney Cove after an unbelievably dry and sunny walk, stopping at The Galleon Inn for refreshment, looking out at the ferry crossing from Polruan, before returning to our transport.

Now you can't tell me that we would be better staying at home. We had enjoyed a 6 mile walk with good companions, and I was delighted, when several of my Meanderers told me that they had never been to that area before, and that included Cornish walkers, because it is very satisfying to show others this wonderful County.

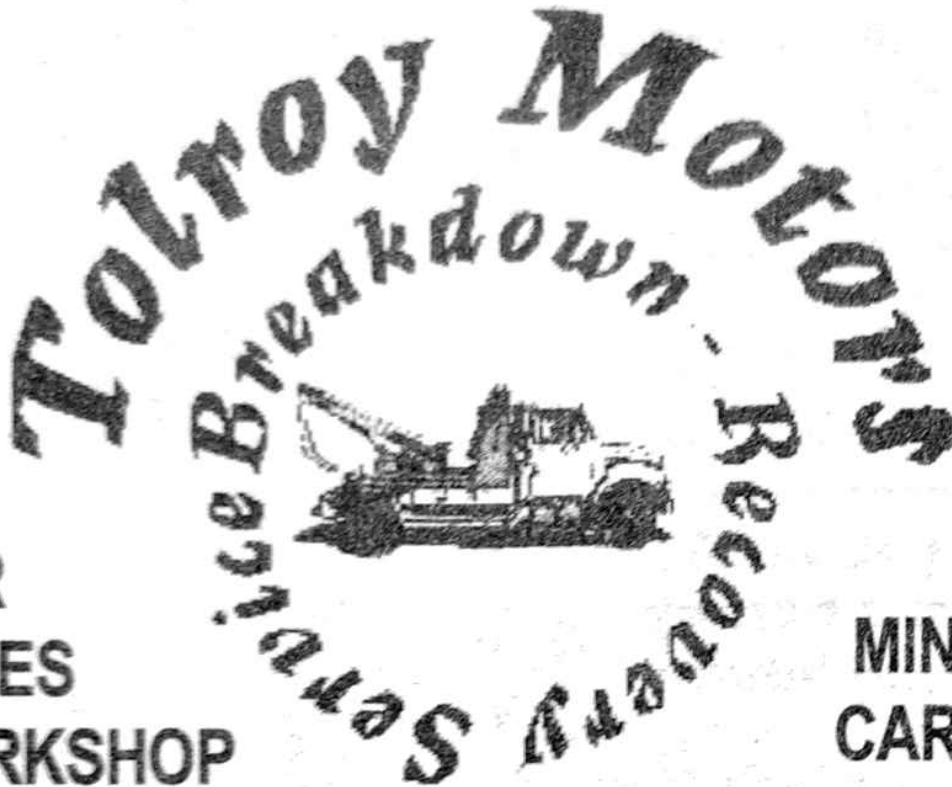
Joan Smith

Hayle Meanderers' Walk Leader

We're in Iron & Steel.

My wife does the ironing and I do the stealing!

TOLROY GARAGE



CAR
SALES
WORKSHOP

VAN
MINI-BUS
CAR HIRE

SERVICING REPAIRS



Batteries

Sweets

Bulbs

Milk

Car Parts

01736 - 752692

Bread

Car Wash

01736 - 757777

Coffee & Tea

etc.

OUT OF HOURS

etc

07970 101761

*COAL * LOGS * SHOP*

UNDER NEW MANAGEMENT

The Farm Shop

31 Penpol Terrace

Open 6 days a week

8.00 - 5.30

For all your Local
Produce, Fruit, Vegetables,
Flowers & Plants

**NOW ALSO AT
1 Fore Street
Copperhouse**

Talent on Show

A spectacular time was had by all in the "Star for a Night" talent competition held at The Smugglers' Inn in St. Erth on Monday, 8th January.

There was a crowd of about 200 eager spectators to watch the 22 entrants battle it out for the top spot.

The competition was varied and of a high standard, with such acts as Robbie Williams, Elvis Presley, Showaddywaddy, Celine Dion, Tina Turner, The Carpenters, to name but a few!

Everyone did exceptionally well, and in 3rd place was Hayley Waller

from Hayle, singing Whitney Houston's "I will always love you".

In 2nd place was Alan James, also from Hayle, who did a great job of Travis's "Why does it always rain on me".



**Neil Potter, Best Overall Entertainer,
"Star for a Night" at the Smugglers**

And in 1st place and winning the £75 prize was Tracy Church from Camborne who did a wonderful rendition of the Alison Moyet classic "That ole devil called love".

Then came the overall prize for best entertainer, which was awarded to Neil Potter from Hayle, who amazed and impressed everyone with his performance of Robbie Williams' "Let me entertain you" in full costume and make-up. His prize was a 2-week holiday which was donated by John Fowler Holidays.

The event was organised by Tony Douglas, the entertainer, and Harry the Landlord. We would like to thank all competitors, supporters, judges and everyone that made the night a great success. Watch this space for details of the next big event at The Smugglers' Inn.

Hayle Town Band

The Hayle Town Band would like to hear from any former players of the above Band, or if you know some-one your family who, at one time, started having music lessons, and still possesses a musical instrument, could you ask them to please return it with any other equipment, such as a music stand, or any sheet music to the band room in St. John's Street any Tuesday or Thursday evening.

This will be much appreciated by everyone in the band, as it will enable other youngsters to learn and join the band.

W J Whear

The Thai Chef



welcomes you to try a
mouthwatering
selection of popular
dishes from
"Thailand"

Lunches by Appointment
set menus and party
buffets available
Vegetarian Meals

Open

Mon. - Sat.

5.30pm - LATE

(01736) 757671

Bistro & Takeaway

42 Fore Street,
Hayle.



DON'T PANIC!



FRESH ANSWERS TO YOUR HEARTBURNING QUESTIONS FROM CMG

Q: Please help me! I've lost it!
Before Christmas I had a perfect
waistline but now I can't find it
anywhere! Can you help me?!

HARASSED OF HAYLE

A: Don't Panic! As long as you
start the New Year with lots of
fresh fruit and veg from CMG
you'll find it just where you left it!

Uncle Colin

Q: Uncle Colin - what is CMG
and where can I find it, please?

HOPEFUL OF HAYLE

A: Right there -

off Foundry Square!
and *Uncle Colin* calls it

**COLIN'S MARKET
GARDEN**

THE SIGN OF
FRESH
FRUIT & VEG



PROBLEM PAGE by
BAJGER ARTS on 756756

Hayle Healthfoods

"It's one of those things which, once you've thought of it, seems so entirely logical that you wonder why you'd not thought of it before!"

Nicholas Morris, ex-Postmaster at Portreath was debating on his possible next move; casual assistant Felicity Laws, who is a practising Hypnotherapist and Healer, was looking for opportunities to broaden the scope of her personal development work - what better than to pool their expertise and interests in a very positive way.

"Strangely enough, we both independently came up with Hayle as the choice of location; my financial adviser and my vet are both in Hayle, and I feel that it's a place with heart. Walking down the long main street there was a sense of purpose and there was our unit just waiting for us. You always know when things are right, they just fall together".

Hayle Healthfoods will be offering a wide range of foods and health-related products chosen for quality and naturalness, environmental and animal respect. People are becoming more and more aware, not only of the possible dangers of synthetic products, but the fact that the closer things are to your body's natural working, the more efficient and effective they will be.

Information and assistance will be

the keynote. Of course we are here to sell products, but to us it is most important that the customer gets the best possible option for his or her own special circumstances - if they benefit from a visit to Hayle Healthfoods, they will come back again, tell their friends and once again there is a ripple effect.

Of course we don't know everything, although we both have a very deep personal interest in health products, so part of the excitement and adventure is learning, which will often come directly from our customers. Our principle is a win-win situation - we sell good products and our customers' health and well-being is enhanced.

Nicholas lives in the Camborne area with his partner, Gill, and their 6 daughters. He has a very personal interest in running, having taken part in the Grizzly, and considerable knowledge of sports and fitness products. Felicity lives in Portreath with her much beloved cat, and is training in Homeopathy

Caty's Cafe'

The cafe' at Copperhouse in Market Square (which was formerly Harvey's) is now open under new management, old and new customers welcome. Tues & Thurs. OAP meal specials.

HAYLE HEALTHFOODS

in Pratts Market are pleased to offer:

- QUALITY • NATURAL • VALUE • PRODUCTS •
- Homeopathic
- Herbal Remedies
- Supplements
- Vitamins & Minerals
- Special Diets
- Hand Made Soaps
- Nuts & Seeds
- Herbs & Spices
- Dried Fruit
- Cereals & Grains
- Herbal Tea/Coffee
- and much much more

Nicholas Morris & Felicity Laws will be pleased to provide information and assistance. We will also be offering a local delivery service. To contact us:
Phone/Fax 01209 842509
Email: felicityj.laws@virgin.net

Hayle Town Forum

The forum in Hayle continues to flourish and has the support of the many organisations in Hayle. Our community fund which gives limited financial support to projects which otherwise would not be able to go ahead, is helping more and more in the town. Last year there was a total of 24 applications and these are being progressed through the system set up by Cornwall Regeneration. Much voluntary work by Forum members is entailed in the process, and the willingness to work on behalf of the town is much appreciated.

In our regeneration plans we have set up a number of groups in conjunction with our community

plan project officer, Caroline Sergeant and our community economic development officer, Paul Green to develop various aspects to benefit the future of the town.

These include an economic review, tourism potential, street-scape improvements, coastal activities, building integration, regeneration of Copperhouse and Hayle Cinema.

Some groups which have benefited this year, receiving grants of up to £500 are: Hayle Decorative Lights, Hayle Lions, Hayle Town Band, Hayle Twinning Association, Hayle Surf Life Saving Club, Archers of the West, Hayle Day Care Centre, Hayle Tennis Club, Hayle Youth Project, Hayle Blood

HAYLE BOWL

a great place for all the family

TEN PIN BOWLING

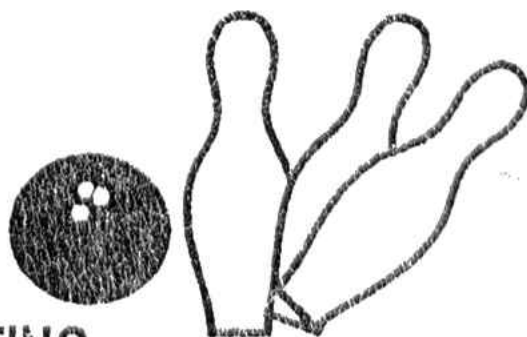
FULL & TASTY BAR MENU

SNOOKER & POOL TABLES

AIR HOCKEY & VIDEO GAMES

LASER CLAY & TARGET SHOOTING

INDOOR & OUTDOOR BOWLING GREENS



62 QUEENSWAY, HAYLE Tel: 01736 752595

Transfusion Service, Hayle Carnival Committee, Hayle & District Girl Guides, HADS, Hayle Air Training Corps, RNLI, Hayle Model Railway Club, Hayle Rose & Cabbage Society, Hayle Canoe Club, Hayle Rowing & Pilot Gig Club, Hayle Football Club, Hayle Monday Club, with a couple more still in the pipeline.

R.S.P.B.

In spite of the mild winter, the number of birds winter-ing on the estuary has been rather high of late. It is unlikely the cold snap we experienced around Christmas made much of an impact, being too short-lived. Thus a count on 15th January revealed 630 Wigeon, 100 Teal, 70 Shelduck, 9 Dark-bellied Brent Geese, 44 Grey Plover, 350 Lapwing, 12 Bar-tailed Godwits & 2 Black-tailed Godwits, 48 Redshank, 2 Greenshank, and 500 Dunlin.

In addition, more unusual species have included 3 Whooper Swans at Lelant Water, 3 Great Northern Divers and a Slavonian Grebe in Carnsew Pool, and the adult N. American Ring-billed Gull at Copperhouse, which has just returned for its 17th winter: where it goes to in the summer nobody knows!

Dave Flumm

ROY HAYES GLASS

ALL TYPES OF GLASS
SUPPLIED
CUT TO SIZE OR FITTED
COLOURED GLASS &
LEAD CAME STOCKISTS
FAST, EFFICIENT & FRIENDLY
SERVICE

FIND US AT THE REAR OF:-

CENTRAL GARAGE,
HAYLE TERRACE

01736 - 754023

01736 - 752619 (after hours)
(or mobile) 0788 0530795



GUESS WHO!

Dogs for the Disabled

Dogs for the Disabled trains specially selected dogs to carry out a range of practical tasks to assist disabled people. Highly trained dogs can help to improve the quality of life for these people by doing tasks which they find difficult or impossible to do themselves. The partnership with assistance dogs leads to: Greater independence, increased sense of security, renewed confidence, and companionship.

Dogs for the Disabled is a Partnership for life. Trained dogs can also open and close

doors, and can activate light switches and alarms. They can pull washing out of a washing machine, and fetch groceries in a shopping basket. Through the use of a special harness, they can help a person with balance difficulties to walk without a walking frame or stick.

All dogs are trained in basic obedience, with a special awareness to hygiene.

Each dog and its future owner spend up to 4 weeks working together at a training centre, under the guidance of an instructor.

Name and address supplied



David Moyse Clothing

Your Local Shop
for

Ladies & Gents Clothing

You are welcome to come in and browse

Call us now



01736

752053

Get Your Winter Warmers Here!

*Thermal vests,
knickers, warm
tights & socks
In stock*

Sinbad the Sailor, Pantomime

Wonderful Hayle Lions and The Trencrom Revellers. You did us OAPs proud again!

It was a really cool wonderful evening out. All of us don't think we've enjoyed ourselves so much, or laughed so much that the tears of joy and amusement were falling from our eyes. Oh, you foolish ones who booked to go and then changed your minds will never know what a great show you missed out on!

The acting was great, the costumes were out of this world. The production music and the choreography were all the very best.

I for one thought it was a better than the live show by so-called well-known actors and actresses in the big town.

What joy to watch the dancers!

Thanks to all the advertisers, for without their help there would be no show.

Once again, Many Many Thanks Hayle Lions.

Name & Address supplied.

BMX Rebuild Project

A small group of young teenagers have started a bike-building project for themselves and require help with some of the parts.

If you or your friends have any spare parts that can be used to rebuild a BMX bike of any size, we would be pleased to hear from you.

Please contact Rod on 01209 843175



COMPUTERS

HAYLE SHOPPING ARCADE
(off Foundry Square)
HAYLE

TEL/ FAX

01736 754967

www.second-byte-computers.co.uk

Email:

sales@second-byte-computers.co.uk

R.N.L.I. -

Hayle Branch

Volunteers are urgently wanted to join the Hayle Branch of the R.N.L.I.

Can you spare a few hours of your time to help with this very important charity?

Meetings are held on the 2nd Wednesday of January, March, May, June, July, August, September, and November at the Passmore Edwards Institute.

For further information please contact Mrs. Hayes on 752619 any evening.



White Sails Restaurant

3 courses - £17.95 2 courses - £14.95

Soup of the Day

Baked Garlic Mushrooms topped with Melted Cheddar
Sautéed Chicken Livers on Salad Leaves
Pan Fried Black Pudding with Red Onion Marmalade & Apples
Salmon Croquettes with Crème Fraiche & Dill Dressing

Aromatic Slow Cooked Lamb Shank

Plum Glazed Duck Breast
Pan Fried Chicken Breast with White Wine, Tarragon & Cream Sauce
Stilton & Mushroom topped Sirloin Steak
Mackerel Fillet with Mussels in Cider
Nutty Tofu & Vegetable Flan on Tomato & Basil Sauce

Trio of Miniature Desserts

Lemon Brulee Tart
Hot Black Cherries in Brandy with Vanilla Ice Cream
Cranberry & Apple Sponge Pudding
Profiteroles with Hot Chocolate Sauce

FREE 1/2 Litre of House Wine with this Advertisement*

17 - 19 Commercial Road, Hayle, TR27 4DE

01736 753272

Car Parking ~ Licensed ~ Non Smoking

*Valid for 2 diners ordering from Dinner Menu, cannot be used in conjunction with any other promotion, offer ends 31/3/01



Mrs Pat Haysom receiving her prize of a bottle of champagne from Rob Evans, chef/ proprietor of White Sails Restaurant.

News from White Sails

Firstly, congratulations to Mrs. Pat Haysom, the winner of our Champagne Draw, and thanks to everyone who entered.

White Sails will be taking part in The Times and Sunday Times Restaurant promotion which begins shortly - "Eat Out for £5.00" - so start collecting the vouchers. They will be appearing in the newspapers from the end of January.

St. Valentine's Day isn't far away when we will be preparing a special romantic menu, so if you would like to

treat your loved one, reserve your table now.

Mothering Sunday is on 25th March this year and White Sails will be open for lunch with a special menu - 3 courses for £12.95 to include a present for all the Mums.

Please ring for more details, or to make a reservation.

Finally, be sure to take advantage of our Free Wine Offer - see advertisement for details.

*Debbie & Rob Evans
White Sails Restaurant*



**WHY WAIT
TO FEEL GREAT?**

BIOFLOW MAGNOTHERAPY

**FOR RELIEF OF
ACHES & PAINS
(HUMANS & ANIMALS)**

*Recommended by Doctors, Vets
Physios & Chiropractors.
Bioflow is registered as a Class
1 Medical Device.*

**FOR FREE BROCHURE CALL
JEAN ON 01736 - 755751
INDEPENDENT DISTRIBUTOR**

MISSING CAT

*Female brown tabby 7 months old,
missing since Dec. 28th.*

*Still has shaved side from being
spayed. Please could you check
your sheds and garages. Thank
you.*

Hayle 754048 or 757736

The View from the Steeple

**A very Happy New Year to you all
and welcome to the start of the
real Millennium!**

A lively children's Christingle Service began the festive season but the final weeks of the year 2000 were dogged by an outbreak of

influenza and persistent bad weather.

Even I was forced to retreat from my perch upon the steeple to the warmth of the Belfry below.

Buffeted by strong winds and drenched by the rain, we sang carols at the Christmas Services to a new percussion accompaniment - the dripping of water into the buckets placed strategically under the leaks along the North Aisle. Time to take a course on Ark Building, perhaps?

By the time we reached Christmas Eve, the weather turned seasonably colder and Cornwall, with the notable exception of Hayle, had an official "White Christmas". It was, however, a crisp, frosty morning and a vast improvement on the previous deluge.

The visit of the Three Kings to Bethlehem is celebrated by the Epiphany Evensong - a service which is rotated between the five Churches of the Godrevy Team Ministry. This year it was held at St. Elwyn's Church and beautifully sung by the Penwith Deanery Choir. Epiphany is also the twelfth day and last night of the Christmas festivities and used to be marked by a great feast when servants and masters would change places for the night to commemorate the Kings paying homage to the infant Christ.

The Christmas and New Year Concerts were rounded off on 14th January with a magical musical

performance by the Cornwall Chamber Orchestra in aid of the Macmillan Nurses and St. Julia's Hospice.

The new season of Choir Concerts began at St. Elwyn's on 28th January with a visit from the Chacewater Carnon Vale Male Voice Choir and Brass Duet. This is the third series of five Concerts organised jointly by the Hayle Lions and St. Elwyn's Church and if they prove to be as varied and enjoyable as in previous years, you are all in for a real musical treat. Come along and enjoy!

See you all again soon!

Sanctuary Sparrow

A Golfer's Lament

An old golfer, who had spent every minute of his leisure time on his beloved game, rain or shine, realised that at his age he could be called to the Golden Gates at any time.

Not unnaturally, he began to muse on whether there was a golf course in Heaven, and sent up an appropriate silent prayer. To his astonishment a voice whispered into his ear:

"I have heard your prayer, Timothy, and I have good news for you, but also some bad news."

Timothy asked for the good news first.

"Yes, there is a very good golf course in Heaven."

"And the bad news?"

"You're teeing-off first thing tomorrow morning!"

Charles Crowle

RED RIVER TRADING CO.



T-SHIRT PRINTERS

PUBS-CLUBS

EVENTS-BUSINESSES

PROMOTIONS-ETC.

RED RIVER TRADING CO.

Rear Workshops
17 Penpol Terrace
Hayle

Cornwall
TR27 4BQ

Tel/Fax 01736 755966

Home Farm Foods

TASTY FROZEN FOODS
DELIVERED DIRECT TO YOUR DOOR!
NO MINIMUM ORDER - NO DELIVERY CHARGE

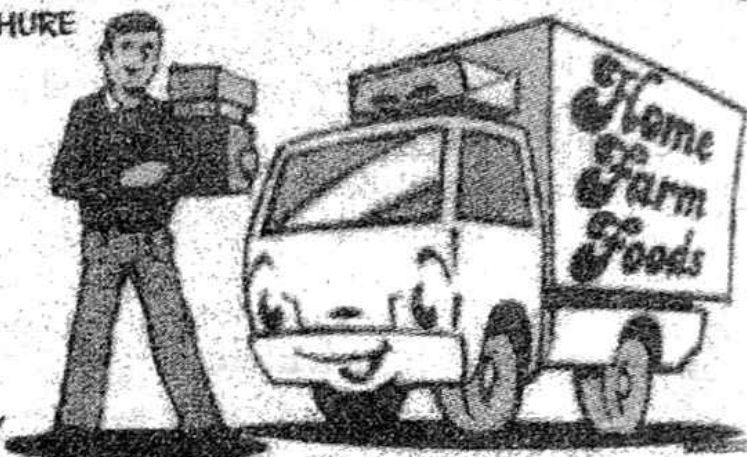
With a range of over 200 items, we really can offer something for every taste . . . from Complete Meals for One to Gourmet Dinner Party Packs, Traditional Pies & Puddings to Indian & Chinese. Meat Freezer Packs . . . Fabulous Fish . . . Vegetables Delicious Desserts . . . Ice Creams . . . the list is endless!!

CALL NOW FOR OUR FREE COLOUR BROCHURE

01736 754239

Hayle Shopping Arcade
Chapel Terrace
HAYLE

PAYMENT BY CASH OR CHEQUE ON DELIVERY



Home Farm Foods is a home meals service which brings a range of nearly 200 delicious frozen meals direct to your door. Operated by the Lilly family from their base in Hayle, this reliable, friendly service covers the whole of Cornwall. Delivery is free and there is no minimum order.

The choice is large and varied and offers everything from a complete, ready-prepared roast dinner to scrumptious desserts. There is a wide selection of ice creams and cold sweets and the range also includes fish, Oriental meals and delicious snacks, as well as larger items for family eating. Vegetarians and those who are 'weight-watching' are also well catered for. The latest addition is a range of fine foods for dining out at home.

In many parts of the county the Lilly family work closely with Social Services and Age Concern as they find that the elderly can benefit greatly from the delivery to their door of

tasty and nutritious pre-prepared and cooked complete meals which involve no more than simple re-heating. "Just because you are disabled or getting on a bit in years, doesn't mean you don't still appreciate the finer things in life and a good, balanced diet is very important," said Ken Lilly. "Shopping and cooking can be a serious problem and here's where we can help. Our regular doorstep delivery is tailor-made for such circumstances and we are always happy to advise on the most suitable dishes. Our drivers are very helpful and will even stack the food away in your freezer if need be."

An impressive colour brochure is available, showing pictures of all the dishes, together with dietary information, prices and an order form. If you would like a brochure or further information simply phone 01736 754239.

EAT FOR A WEEK!
BEEF ROAST DINNER
LAMB ROAST DINNER
COD, CHIPS & PEAS
SWEET & SOUR CHICKEN
MACARONI CHEESE
LIVER & BACON
SAUSAGE, CHIPS & BEANS
PEACH & APRICOT SHORTCAKE (2)
SPOTTED DICK
TREACLE SPONGE
HONEY & GINGER ICE CREAM
VANILLA & CHOCOLATE SUNDAE
HAZELNUT & CARAMEL SUNDAE
£17.50

A LA CARTE
Best Quality dishes which are quick and easy to prepare
ORCHARD PORK
CHICKEN, HAM & LEEK BAKE
CREAMY MINT LAMB
BEEF WITH THREE MUSTARDS
COD & PRAWN BAKE
CHICKEN & POTATO MELT
CARROT & LEEK LASAGNE
ITALIAN TIRAMISU (2)
£21.50 ONLY

We are happy to substitute any products that do not suit you. This may affect the price of your pack.

ME?! US?!

AN ARTIST PAINT OUR

CARICATURES

**AND PRINT THEM ON OUR
BESPOKE WEDDING
STATIONERY?!**

IT'S UNHEARD OF!



bajjer arts

01736.756756



Memories of Hayle

By Joyce Harvey

I remember those wonderful summer mornings when my grandmother would say "That mist is all for heat, I'll make pasties and we'll go over to the Towans beach today."

Hayle was much quieter in those days before the Second World War, with fewer cars and lorries on the road. It seemed to me a lovely place to live, with Hayle Pool to swim in, or the Ferry Side, or we'd call Mr. Couch the ferryman from his home on Lelant Beach to come and take us across. Best of all was the big beach at Hayle. We'd walk to Clifton Terrace and across the Towans, where we'd stop for lemonade and a rest at Tom Taylor's shop and tea rooms, just above the beach. At last

we'd go down on the sands and after a race to the sea for a swim, some climbing of the rocks and exploring of the rock pools, we'd settle down to our still warm pasties and saffron cake.

After swimming and sunbathing all day, we'd set off for home, feeling warm and sunkissed, tired but happy, hearing the skylarks calling overhead on the way home across the Towans. Sometimes as a special treat we'd go to the Palace Cinema at Copperhouse in the evening, and then we'd think we were really living.

There was the lovely week we spent on a houseboat on the Ferry Beach. A swim before breakfast was a sheer delight, and when looking out of the porthole at high tide, we could look down through the clear water and see crabs walking on the sand below. When the sun went down in the evening it was so peaceful with only the lap lap of the water against the boat.

I enjoyed going to Hayle Grammar School for Girls, situated just above the railway station. I can remember leaving home with a panama or velour hat with the school colours of black and crimson on the hatband, and once out of my grandmother's sight, taking it off in favour of the headscarf in my pocket, and switching this headgear again when approaching the school gate!

At Christmas our school would hold a concert, consisting of sketches and dances, at St. Elwyn's Church Hall, for parents and friends to attend. I remember during the War, we ended our performance by standing on the stage and singing "Land of Hope & Glory", and "There'll always be an England", AND HOW PATRIOTIC I felt! I didn't feel so proud however, when I and some of my class were made to stand in front of the whole school, to be told in no uncertain terms that we were young ladies and should not climb trees. We'd been climbing the trees in the little woods behind Hayle Railway Station, which were out of bounds to our school.

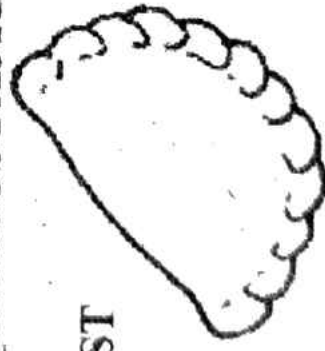
To celebrate the beginning of our summer holidays, our class planned a picnic, and we decided we'd cycle to a rather isolated field, so that we could try smoking. What fun we had that day, a lovely sunny day, a lovely picnic, but oh - the choking and gasping on the cigarettes. I've never smoked one since!

Our needs in those days seemed to be very simply. I had an old iron hoop and drill to bowl up and down the back lane, where fields lay behind one hedge, and we'd pat the cows or perhaps play in the hay rick, which is where I had my first kiss at the old age of sixteen! It was in this same back lane during the war, that whilst bowling my hoop, I looked up

PHILP'S

FAMOUS PASTIES

EST



1958

BAKING 7 DAYS A WEEK
FOR THE GREAT TASTE OF
CORNWALL'S
PREMIER PASTY MAKERS
WITH OVER 40 YEARS
EXPERIENCE
VISIT US NOW
AT OUR SHOPS AT-



**1, EAST QUAY,
 HAYLE
 01736 - 755661**



**1, FOUNDRY HILL,
 HAYLE
 01736 - 753302**



**MARKET PLACE,
 MARAZION
 01736 - 710332**



**THE SQUARE,
 PRAZE & BEEBLE
 01209 - 831360**

at a German plane flying so low overhead, that I could see the swastikas on it and the pilot inside. People said that he'd been taking photographs of the I.C.I. and the Electric Works, but no siren had been sounded to warn us of an air-raid.

Sunday mornings meant going to Church, and I'm afraid on those Sunday mornings that were bright and sunny I'd have a headache until it was too late to go, and then I'd suddenly recover! But I did like Sunday School when we'd get stamps each week to put in our attendance book. When I was older however, and I joined the St. John's Ambulance and the Girl's Training Corps, I was very proud to march through Hayle in the Parade to Phillack Church, and pray for our country which was at war with Germany.

I joined the Hayle Drama Group and was the youngest member. We put our plays on at the Drill Hall and we usually had a full audience. We also went to St. Ives Arts Club and once did a Nativity play at St. Peter's Church, Newlyn.

Dances held at the Drill Hall every Saturday night were always looked forward to, and we loved dressing in our best clothes and putting on a touch of lipstick for the dance!

The highlight of Summer was of course Hayle Carnival and Regatta. The plank seating would be erected

beside Hayle Pool for the spectators to watch the swimming and rowing events to be held during the day. It was so exciting and in the evening we would go home to dress up for the Carnival. One year I was a fairy in a pink crepe paper dress complete with wand, another year as a Mexican girl. We would parade through Hayle, and then over to the Towans to receive the prizes. Every entrant would receive sixpence.

A popular pastime of my friends and I was to go to Gwithian Towans, where we knew a certain pond that had newts and tadpoles. We would bring them home on a Sunday, and return the newts on the following Sunday, but the tadpoles I'd keep in an old tin bath in the conservatory outside of our kitchen. I can hear my mother now, jumping and shouting, "There's hundreds of tiny frogs jumping around the kitchen." Poor Mum!

When we used to go for walks along High Lanes, at every farm we passed, I'd try and coax any kittens to follow us, so that I could take them home. But Mum always made sure I didn't get far with them!

Running errands as a child was always a pleasant task, as the little shops used to smell so enticingly of dried fruit, sweets, tea, fresh bread, cheese, bacon and so on. Many of the names of the shops are now gone, Mr. Rowe the butcher, Miss Fitzgerald's grocery shop, Clark's

CINNAMON TREE



Indian Take-away



67 FORE STREET • HAYLE • CORNWALL • TR27 4DX
Telephone • (01736) 759171/754108
www.cinnamontreeindian.co.uk

OPENING TIMES

APRIL TO SEPTEMBER: 5.00pm - 11.00pm

OCTOBER TO MARCH: 5.30pm - 10.30pm

7 days a week including Bank Holidays

SET MEAL

£8.95

— —
2 Popadom

Starter

Tandoori Chicken • Chicken Tikka

Lamb Tikka • Sheek Kebab

Main Courses

Chicken Bhuna or Chicken Kurma

Mixed Vegetable Curry • Pulau Rice

Naan Bread • Salad • Mint Dip

The Management reserves the right to refuse any person or persons.

Cheques accepted with bankers card only • Sorry, no credit cards

Special arrangements for parties

the baker, Clack's Dairy, and Mitchell's the draper.

Our milkman had a pony and cart, and his milk was carried in a large churn, from which he ladled it out into a milk jug, which would be covered with a bead trimmed net. The horse and cart with fish came from St. Ives each week to be met and followed by many interested local cats, whilst the fishmonger shouted his wares.

The older Hayle, with its history of industry involving the Harveys, and the several smelting works and mills, were of course before my time, although we often played among the ruins of these industries, and the large dock areas once so full of schooners and coasting vessels,

were used by us as playgrounds and swimming areas.

As we picked flowers at Undercliff, beside the route of the old Hayle Railway, we could hear the bells of Phillack Church, dedicated to the Irish saint Piala, who landed here about AD 450. Little did I realise that one day I'd be married there, and my son christened there also.

I often long for the quieter Hayle of my childhood, and the lovely carefree days, with the older generation still around me.

Who gets the most kicks out of their job?

A footballer

Copperhouse Jewellers

Stockists of fine quality gold and silver jewellery.

Wide selection of South Crofty Tin Collection.

Jewellery Repairs

Valuations for Insurance and Probate purposes

Special Commissions

Don't forget - Valentine's Day - 14th February

61/63 Fore Street, Copperhouse, HAYLE TR27 4DX

01736 753203

Copperhouse Jewellers

The Christmas Draw took place on Saturday, 23rd December, and the winning ticket was held by Mrs. Roberts.

We would like to thank all our customers for supporting their local jewellers, and wish them and all residents of Hayle a very Happy New Year!

Philip & Wendy Chown



Letter

I am writing to say how much I and my family enjoyed the Hayle Illuminated Carnival this year. Once again the organising committee has worked wonders by getting together such a wide variety of colourful floats and ingenious modes of dress by all the walkers. Long may it continue!

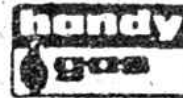
Also, we must not forget the two bands who took part playing carols and Christmas music to entertain the hundreds of onlookers. Of course one must realise that playing a musical instrument and walking such a long way is no easy matter. I have marched this same route many, many times as a member of the Hayle Town Band, and for any member of a band to keep playing all the time in both directions is pretty well impossible. So perhaps those people, who have complained about the music stopping as the band passed them, should move to another spot to watch the carnival. This would enable them to appreciate this wonderful

THE JOLLY BODGER

75-77 Fore St
HAYLE
(01736) 752091



BLACKFRIAR*



TREND

Decor

Hardware - Gifts
and almost anything

spectacle and make them see the contributions made by the bands in a very different light.

W.J. Whear

Hayle Art Society

Looking back to December, our Christmas Dinner was well attended at The Badger Inn, Lelant and was thoroughly enjoyed by all who went along. Many thanks to Jo for making all the arrangements.

It's hard to believe we are now well into yet another new year, with so many things going on in Hayle. No-one can say "there's nothing to do!"

Hayle Art Society now has more members than ever - at the present time we are full to capacity and

**EXERCISE THE
WINTER BLUES
AWAY**

**STAY FIT
WITH
SYLVIA**

**AT THE
PASSMORE
EDWARDS
INSTITUTE
HAYLE**



MONDAY "STEPS"	6pm
"TUMS' N BUMS"	7.15pm
WEDNESDAY "STEPS"	6pm
FRIDAY "MUSCLE MIX"	6.30pm
SESSIONS £2.50 CONCESSIONS £2.00	

literally jostling for elbow-room. If anyone is interested in joining as a new member, names and phone-numbers can be entered in our waiting list in case a space becomes available, either for Tuesday afternoons or Wednesday evenings.

We now have a tutor for two weeks out of every three, when we receive practical advice and encouragement in whatever medium we choose.

During the summer months we hope to have painting venues out of doors, in addition to our normal sessions at the Passmore Edwards Institute.

Our Annual Exhibition will be held during Hayle Heritage Week, when

there will also be an exhibition of paintings by local school-children and, as last year, there will be prizes for the children for the best entries.

A further exhibition is planned for the Autumn, but details of this have yet to be decided.

In the meantime we shall be busy, hopefully producing some exciting new paintings for 2001.

Further information: 75 3405

St. Elwyn's Church Hall

A very successful meeting was held in the Day Care Centre on and discuss the refurbishment and improvement of the hall.

At present, despite a leaky roof, virtually non-existent heating, and the continual attentions of vandals and thieves, the hall is booked by someone on most days.

The day attracted over 60 people, who met Julie Lewis from the New Economics Foundation, who had come from London to see us, as well as Alan Chesney from Truro Diocese. There were also a wide range of people from Hayle, including our Mayor and other Councillors, and also many young people, and other people who work in the town.

Truro diocese has no money to help us, indeed, lack of funds threatens the existence of many Cornish churches, but they do have expertise, and will help us to find

people who do have money.

The next step is to organise a trip to Tuckingmill Church who have just completed a similar scheme.

Any ideas, please contact the Curate, Tim Cotton on 755870

#####

For IRENE (1918-2001)

Irene Guest
sadly
passed
away on
Sunday
7th January
2001 at
6.30am
after several
weeks of
illness



following a stroke.

She will be sadly missed by all who knew her, but no-one more than her husband, Arthur.

Irene and Arthur are well known local figures in Hayle, having lived in Mexico Lane for 26 years. They would have been married for 60 years this year, and were, at one time, championship ballroom dancers. Irene loved to dance, and sing, and this reflected her nature - bright, bouncy and happy. She was completely devoted to Arthur - this is something everyone who met them noticed and commented upon. Irene had a deep, abiding faith in God, and was for many years a

valued member of the church at Phillack. She had an impish sense of humour, which lifted the spirits of all around her. There will be many tears shed by those who knew and loved her, but many smiles too, as we share memories of her.

One of Irene's favourite songs has these words:

"My shackles are gone,
My spirit is free,
Oh praise the Lord,
He lifted me."

That is the way I will always remember her - free, unshackled, and sitting at the side of the God she loved so much.

Name withheld.



MOBILE BARBER SHOP
CARL 0403 438391

Classic Barber

SATURDAY & SUNDAY
AT POOL MARKET
(NEAR CAMBORNE)

Haircuts £3.50

Adults or Children

Des Button

☆☆☆☆

**ELECTRICAL SERVICES
AND
SUPPLIES**



Springfield
33 Clifton Terrace
Hayle
TR27 4BP

HAYLE 753211

No Chilly Reception here!

**Well, a big happy New Year to all
of Hayle!**

I can't say I'm not glad it's all come to an end. If I see any more turkey I will faint. But despite that, December was a fine introduction to me to Christmas in Cornwall. We entertained some 170 residents over the last two weeks with a fixed menu meal. It was according to everyone else I talked to, a fine start to our first Christmas.

Of particular note were the usually staid staff of Bodriggy Surgery - modesty prevents me from mentioned their goings on, but

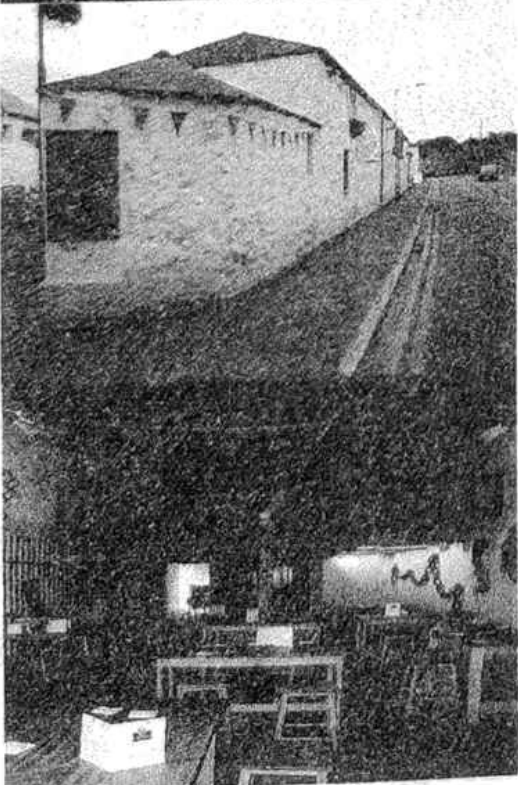
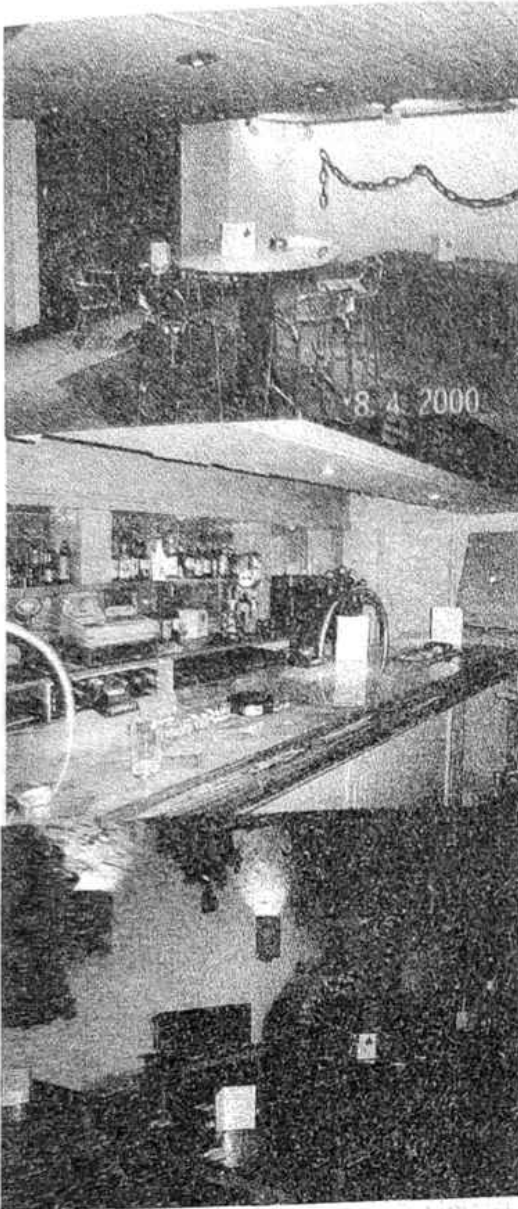
suffice to say the evening was like a scene from Carry on Doctor (Oh Matron!)

The award for best dancer goes to an unnamed employee of Spar. Such was the excellence of her pole display that we are talking to Penwith Council about expanding the entertainment here at the Foundry!

The last night of the year, though, was the best of all nights. I cooked way too much food, according to our guests, and my Elvis impression at midnight was warmly received. I was thrilled that we were close to capacity, and from the reports I have been hearing, it won't be difficult to sell out next New Year's Eve!

So how do you get yourself back on the horse after all the excitement of the last month? Well, surprisingly, with a new menu in the planning, lots of groups to cater for, and lunch and Sundays to plan for, starting in April. I can't seem to find the time to complete everything.

We have a St. Valentine's Dinner planned for the 14th February with a set menu for £10, and to round off the week we are having another Irish Night on the 16th February. I wouldn't have had another so soon (the last was in October), but we have managed to get The Belfast Busker. He is fully booked every weekend in 2001, but had a February cancellation, and we are lucky enough to



STREET FOOD FROM AROUND THE WORLD

Calzone - Spring Rolls
Wraps - Wontons - Kebabs
-Tempura... and much more!

ALL UNDER A FIVER!

- Premium Drinks
- Draft Budweiser
- Over 20 bottles of wine
- Freshly brewed Cappuccino
- Children Welcome till 9pm

THE
FOUNDRY
CAFE · BAR



(Behind the White Hart Hotel)

Foundry Square, Hayle

Cornwall, TR27 4HQ

Tel: 01736-753334

Open Tuesday to Sunday from 6.00pm

Except Fridays Open from 5.00pm

Fridays FREE NIBBLES FROM 5 - 7PM

ANGOVE SPORTS

COPPERHOUSE, HAYLE
Tel: (01736) 752238

FOR ALL
SPORTS EQUIPMENT
CLOTHING, FOOTWEAR
AND FISHING TACKLE

RACKETS REPAIRED
AND RESTRUNG

bring him back to Hayle - he played at The Bluff some years ago, but hasn't been back since.

So plenty going on. Quizzes still every two weeks and lots of new faces each week.

And they all said it would be quiet in Hayle in the Winter! Poppycock!

Chef John

The Foundry Bar



Hayle Twinning Association A Brief History

The Twinning Association was formed after a meeting was called by Hayle Town Council and the Mayor at that time, Charlie Allen, to see who was interested in forming a

Twinning Committee. The date was 24th July 1995. 19 people turned up, of whom 11 were willing to serve on the Committee. The officers were elected, and it was the Council's wish that the twinning would be run independently, but that one Councillor would represent them.

Meetings were held in the Cornish Arms Pub every month. Different countries were talked about, i.e. Holland, Germany, Ireland and France. Unfortunately the numbers started to dwindle for different reasons until only 4 were left. These four had full support from their wives and families, so this kept them going. Occasionally they were joined by others interested in twinning, but for various reasons, work, moving away, etc., the four continued as before.

Early in 1996 contact was made with a town in Brittany, in the Cote d'Armor region; the town was called Pordic.

In May, the Mayor Andre Guede visited Hayle with one of his deputies, for a quick visit. Meanwhile I was in Brest on the last day of my holiday, and I paid a short visit to Pordic. I thought it to be a nice town, smaller than Hayle, but similarly sited near the coast, and not too far from the ferryport. On my return the next day I visited the Town Clerk's office to learn that Charlie and Andre were arriving there in a few minutes. I waited to see them and we had a talk. Andre liked what he saw of Hayle and was keen to get things moving. He then returned to France.

At our next meeting it was agreed that a small party should pay a quick visit at their own expense, arrangements being

made by telephone. The party consisted of Charlie, myself and our wives. We had a very eye-opening weekend, and brought back good reports. Whilst there we met a lot of people from different clubs and schools, all of whom were keen to twin. The Pordic Rugby Club was keen to come across the following May, and Hayle RFC went over a couple of weeks later.

In February 1997 four members of Pordic's Committee visited Hayle to see what they thought of our town. They were hosted by Charlie and myself. The visitors were Claude le Potier, Chairman, Vincent Doucet, Treasurer, Robert Rolando, Chairman of Pordic Rugby Club or "The Butcher of Pordic", and Josseane Guiren. They had a very good weekend and took back good reports.

It was agreed to twin, so arrangements were made and a Charter prepared in both English and French. The first signing took place in Pordic in the presence of a group of 24 including the Hayle Football Club's Junior Team. We signed the Charter in the Town Hall, which was packed. Everyone was so friendly and the youngsters really enjoyed themselves. There was a football match against Pordic Juniors.

The second signing took place in Hayle on Saturday, 10th April 1997 at the Penmare Hotel. This was after the Rugby Match played between the two towns. On this occasion a party of 56 came over. The support from Hayle Town was disappointING, but the weekend was a roaring success. The cost was met by those few who worked



DOWN ON YOUR UPPERS?!
FEEL A NEW SHOE AT
footsteps
YOUR LOCAL FOOTWEAR SPECIALISTS
Margaret Tanner
27 Penpol Terrace,
Hayle, TR27 4BQ
01736 - 757735

so hard to arrange it.

Since the twinning has been formed, Hayle Rugby Club, Hayle Football Club, Hayle Road Runners (who, incidentally visit Pordic annually), Hayle Male Voice Choir and Hayle Town Band have all been on visits which have been very enjoyable, and most of all they have left lasting memories of wonderful hospitality.

It is our aim to keep this bond between our towns growing stronger, but we need your help to do so.

How can you help? It's easy - speak to anyone who has visited Pordic and they will tell you how friendly the people of Pordic are. They have schoolchildren who would love to exchange with your children, so if any of you would like to take the advantage of this, just contact us. It's an adventure worth trying! If there is anything you want to know, ask!

We meet every second Tuesday of the month at the Passmore Edwards Institute at 7 pm. Those of you who were interested at the start, why don't you come back to us?

Pordic, like Hayle, is ideally situated on the coast, only about one and a half hour's ride from the ferryport. It's very

NEIL WADE

MOTOR ENGINEER

CENTRAL GARAGE

10A HAYLE TERRACE

HAYLE

MOT TESTING STATION



- * Servicing
- * Repairs
- * Exhausts
- * Tracking
- * Batteries
- * Tyres
- * Wheel balancing

Home: (01736) 754125

Work: (01736) 756512

SUPPORT LOCAL TRADERS

handy for visiting place: Morlaix - 1 hour; St. Malo - 1 and a half hours; Mont St. Michel - 2 hours; Saint Brieue is only 10 miles away. There are nearby markets, lovely beaches, beautiful coast-lines and good coastal walks.

Pordic has grown since the signing; the population then was about 4,400. It's now about 5,500. A lot of these people commute to nearby towns to work.

A lot of us have made good friends and visit at any time throughout the year, so come on and take that step and join us.

I would like to take this opportunity to thank those of you who help us every year, and have not, as yet, visited Pordic.

We visit Pordic every year to see our friends, and they come across to Hayle

every year also.

At the moment the numbers of exchanges are:

Pordic to Hayle - 231

Hayle to Pordic - 190

Please give us a call on

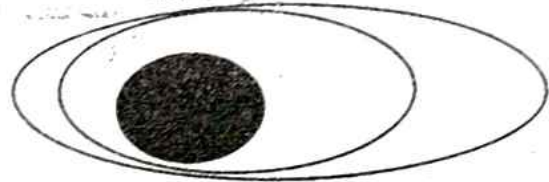
753520 - Maurice

754809 - Dave

P.S. We hope to start up the boules games again this year (when the weather improves)

Maurice Trathen

Penwith Club for Visually Impaired People



The Club meets twice monthly on Fridays at Hayle Daycare Centre from 10 am to 2.45 pm.

Forthcoming dates will be 9th and 23rd February, 9th and 23rd March. The cost per session is £3.60 inclusive of morning coffee, afternoon tea, a cooked lunch and a raffle.

There are various activities, entertainment and interesting guest speakers. On 23rd February The Ladybirds are coming along to sing and entertain.

Large print books, and book and music cassettes are available on loan, and the club organiser will be on

hand to give information on where help can be obtained with regard to problems arising from sight loss.

New members are always welcome and free transport can be provided, if needed.

For further information, telephone John Bennetts on 01736 350724.

80th Birthday Celebrations

Thursday, 18th January 7 pm

Gladys held her 80th birthday "do" at The Madhatters. The Madhatter lady Carmel put on a very good spread of food for about 20 of Gladys' friends. We all had a great time. It started off with a glass of sherry for each of us, then there was some sort of game which I don't recall for I was trying to jot down some of the things that were going

on so missed out on that one, but it must have been good for I could hear everyone laughing their heads off.

After that it was pass the packet, which was great fun.

Then a little sketch done by Birthday Girl with the help from her friend and niece.

It was then time for some music played and sung by the niece and her friend. While all this was going on Harvey the Parrot was managing to say a few words, which surprised me.

Also when the sing-song was going on, Carmel managed to find time to sing a few songs with the friends. That pleased me a lot, for Carmel has such a lovely singing voice.

Mary and Stan did part of a song without music "Madam will you Marry me". We all thought that was great. I

MURTS TELEVISION

RENTAL

SALES

REPAIRS



WIDESCREEN RENTALS
AVAILABLE

ROBERTS RADIO AGENT

32 - PENPOL TERRACE - HAYLE

01736 - 752269

take my hat off to the youngest person at this party, for she got up and sang two songs without music.

There was a word game called Public Notices followed by a game called Crosswords, which was the best one of the evening. Thanks Gladys for inviting me and welcoming me to your "do".

Thank you Carmel for being a great host and for all your hard work.

Name & Address supplied

*Today I smiled and all at once
Things didn't look so bad
Today I shared with someone else
A bit of hope I had.
Today I worked with what I had
And longed for nothing more
And what had seemed like only weeds
Were flowers at my door.*

WANT TO LOSE WEIGHT?

**Do you dream about being
slimmer and healthier? Turn
your dreams into reality and
still eat your favourite foods.**

**Never feel hungry or
deprived at**

Slimming World

Every Tuesday

Hayle Bowl 10.00am

Passmore Edwards 7.00pm

Call FAYE 75 7714

Another Shop Closure in Hayle

It is with great regret that I have left the shop "As Good as New" due to a large increase in rent, which was far beyond my reach, and so I cannot any longer run the business.

I have been in the shop for thirteen years and with the wonderful help of my colleague and friend, Mary Briggs, "Good As New" has held many happy times.

I am sad to leave and would like to thank all my customers and friends for their support.

Rosemary Rowe

N.B.

I have been told that many visitors to the town of Hayle have made "GOOD AS NEW" one of their first ports of call because of the good quality and value of the goods on display. Many customers have been "regulars" for many, many years.

This shop will surely be missed, not only for the bargains that were available, but it was a great service to the community.

JRWP

Letter.

With reference to an article and correspondence about the listing of Harvey's Timber Store, Hayle, there seems to be considerable amounts of misinformation propounded by various factions who wish to draw some political benefits from this whole affair.

1. Firstly, buildings are listed by the Department of Media Culture and

Sport who seek professional advice by consulting English Heritage. They, in turn, seek confirmation from local authorities, and if they do not have an archaeological unit or conservation Officer, they approach the nearest university with the relevant expertise.

2. Any individual can write requesting a listing but only on the advice of experts based on the true historical merits will a listing be approved, not on the say-so of one person, whether councillor or not.
3. This process on this particular building has been ongoing for over 5 years, before the current Harbour developers were in place.
4. This building along with others is recommended for listing in English Heritage's historic audit of the town of Hayle. I, with others, requested English Heritage to bring this particular document forward as an assistance to the developers to ensure that there was a detailed and impartial documentation of all the historic fabric of the town. This document is a necessary part of the planning process when a development occurs amongst so many listed structures and is a publicly available document.
5. It should be the duty of all councillors to enhance the best parts of our distinctive cultural heritage, and to make sure that they can be accommodated alongside new developments that we all agree we need. The size of the Hayle Harbour



Brookvale

Residential Care Home for the Elderly

Family run home, by the resident proprietors Mr & Mrs Broadbridge & Mrs Pleasants RGN, which prides itself on a personal and caring environment. Situated in the centre of Hayle close to all amenities.

Private and DSS residents welcome whether short or long stay. Fully registered with the CCC, and a member of the Cornwall Care Homes Association.

- all necessary care & assistance supplied
- large garden and patios
- two lounges & spacious bedrooms
- full 24 hour care & central heating
- weekly hairdresser & chiropodist
- domiciliary services, day care & M on W

6 Commercial Road
Hayle, Cornwall TR27 4DG
Telephone: 01736 753608

is more than large enough in scope to accommodate this small but important building.

6. I would not have supported at County Council the redevelopment plans for the Harbour or written to Carrick or Kerrier Councils if I wished to torpedo the harbour scheme.

R.H. Lello

Useful tip:

To sharpen needles and scissors, use coarse sandpaper. With the scissors cut the sandpaper a few times. This will give them a new lease of life. With the needles, sew through the paper a few times – this will work wonders also!

SUITES & SOFAS CLEARANCE CENTRE

GREEN LANE, REDRUTH

(ALSO VISIT OUR HAYLE WAREHOUSE)

*BANKRUPT STOCK, MAIL-ORDER RETURNS,
FACTORY CLEARANCES, END OF LINES ETC*

SUITES, SOFAS, ARMCHAIRS & COMBINATIONS

AVAILABLE AT CLEARANCE PRICES

CONSTANT STOCK CHANGES

★ **FREE DELIVERY** ★

FOR DETAILS OF OUR CURRENT OFFERS OR TO
VIEW OUR HAYLE WAREHOUSE AT ANYTIME

PLEASE PHONE

07779 760686

OUR REDRUTH CENTRE
IS OPEN TO VIEW

FRIDAYS &

SATURDAYS

10am - 5pm

FIND US

WHEN YOU TURN INTO

GREEN LANE

AT BOOTS THE CHEMIST

AND CONTINUE UNTIL

YOU SEE ON YOUR LEFT

SUITES & SOFAS

CLEARANCE CENTRE

*

OUR HAYLE WAREHOUSE

IS OPEN TO VIEW EVERY

SUNDAY 11am - 4pm

OR BY APPOINTMENT AT

ANY OTHER TIME

*

*

HAYLE

*

REDRUTH

*

A30

*

ST. IVES

*

ST. ERTH
IND. EST

*

ST. ERTH &
PENZANCE

Help Needed For Animals

The National Animal Welfare Trust, a registered charity, has relocated to the Wheal Alfred Kennels in Guildford Road. Does anyone have any old duvets, blankets etc., that could be used for animal bedding? Also we are in need of craft materials that can be used to make gifts for fund-raising, such as oddments of wool, crochet cotton, Aida and embroidery silks.

And if anyone is an animal lover and can spare time to help us with voluntary kennel work, which includes walking, cleaning etc, or with making knitted blanket squares or any craft items we could sell, we would be very pleased to hear from them.

I can collect anything you may wish to donate.

Please phone me : Jo Wiggins,
Hayle 75 4281

St. Erth Brownies in danger of folding

The Brownies of the 1st St. Erth Pack have to find a new helper.

Their current Brown Owl has to give up due to other commitments, but this will leave the 15 eager Brownies without a future, unless a replacement adult helper can be found.

Here is an ideal opportunity to join or return to the Guide movement.



Resurfacing & Repairs

Basins, Tiles & Shower Trays

Without Removal

Colour change

Over 20 years experience

All work guaranteed

for free estimate call:-

01736 - 756077

(0467 - 837175)

An experienced leader would be willing to run the Unit, but she will need another adult helper. The Pack is part of a very friendly and supportive District, with Guiders who would be helpful and keen to share their advice and experience with the new Leaders.

Being part of the Guide movement is fun and rewarding. There are many opportunities for you to develop or share your skills, if you so wish.

Why not ring Eileen on 754180 for a chat, and find out more about it. Don't miss out on the fun. Ring today!

*Mrs. Eileen Palmer
District Commissioner
Hayle District Guides*



The Creation

*When our maker was idly thinking
He gazed on the world from above
He saw many poor lonely people
With no-one to care for and love.
The Lord with his compassion and
wisdom
With love, both tender and true
Made a furry and four-legged creature
With a tail and green eyes to love you.
And a heart filled with loyal devotion
From the moment its short life began
The maker smiled from Heaven
On the Moggie he created for man!*

Little Red Riding Hood

*As soon as Wolf began to feel
That he would like to have a meal,
He went and knocked on Grandma's
door.*

*When Grandma opened it, she saw
The sharp white teeth, the horrid grin,
And Wolfie said "May I come in?"
Poor Grandma was terrified
"He's going to eat me up!" she cried
He ate her up with one big bite
But Grandma was small and tough
And Wolfie wailed "That's not enough!
I haven't had a decent meal!"
He ran around the kitchen yelping
"I've got to have another helping!"
Then added with a frightful leer,
"I'm therefore going to wait right here
Till Little Miss Red Riding Hood*

WICK

HTG LTD



CORGI

REGISTERED

IOP



**PLUMBING, CENTRAL HEATING
& BATHROOM SPECIALISTS**

**GAS, OIL, LPG, SOLID FUEL, AGA, RAYBURN
BOILER SERVICING FOR HOME,**

TEL/FAX 01736-753277 HAYLE

Comes home from walking in the wood
 He quickly put on Grandma's clothes
 (Of course he hadn't eaten those)
 He dressed himself in coat and hat
 He put on shoes and after that
 He even brushed and curled his hair
 Then sat himself in Grandma's chair
 In came the little girl in red
 She stopped. She stared. Then she said
 What great big ears you have,
 Grandma
 "All the better to hear you with" the
 wolf replied
 "What great big eyes you have,
 Grandma",
 said Little Red Riding Hood
 "All the better to see you with", the
 wolf replied.
 He sat there watching her and smiled
 He thought "I'm going to eat this child.
 Compared with her old Grandma
 She's going to taste of caviar".
 Then Little Red Riding Hood said "But
 Grandma,
 What a lovely great big furry coat you
 have on!"
 "That's wrong!" cried Wolf, "Have
 you forgot
 To tell what great big teeth I've got?"
 "Ah, well, no matter what you say
 I'm going to eat you anyway!"
 The small girl smiles, one eyelid

flickers
 She whips a gun out from her knickers
 She aims it at the creature's head
 And bang, bang, bang, she shoots him
 dead
 A few weeks later in the wood
 I came across Miss Riding Hood
 But what a change! No cloak of red
 No silly hood upon her head
 She said "Hello and do you please note
 My lovely furry Wolfskin coat!"

C.T.C

**Last extract from "A Short
 History of Hayle" by
 Charles L. Crowle.**

In 1820 a rough road was built through Hayle, and went as far as Camborne . To convey the tin ore to Hayle for crushing and smelting huge carts were employed with loads weighing 30 tons or more, drawn by as many as 30 horses. Especially at Roseworthy, where the road came out of the valley and straight up the steep hill (it was not curved as it is now). The old road is still there, flanked by two hedges and can easily be seen from either side of the



W.J. WINN

**FUNERAL & CREMATION DIRECTORS
 PRIVATE CHAPELS OF REST
 24 HOURS SERVICE**

69 FORE STREET
 HAYLE
 01736-752124

&

TRENWITH TRCE
 ST. IVES
 01736-793029



valley, but now used for protracted dissipations!

The road was re-routed to economise on horses. (Previously it was all transported by mules, as the terrain was far too rough for carts) A byelaw was soon passed that the cartwheel's steel tyres had to be of a certain width, as the loads were so great (about 20/30 tons) that the wheels were making huge ruts so that at times the carts had to be dug out.

Up until 1812 the only way to Phillack Church Town was through a ford at the bottom of Lethlean Hill. A bridge of granite was built, during building the "traffic" had to cross further up (about half-way along the what is now the Recreation ground). This diversion caused a lot of controversy amongst the people who lived there, as it passed through the bottom of their gardens! However the road that now exists beside the river, was given to the householders to appease them.

In recent years the clapper bridge was widened and again history repeated itself as the traffic had to be diverted. This bridge, if it wasn't for the intervention of myself and another senior citizen, would have been destroyed, and replaced by a modern concrete structure, and another piece of Hayle lost. The date 1812 can clearly be seen carved in the granite on the left side of the bridge.

Haikus and Tankas

Haikus and Tankas are forms of Japanese Verse.

The Haiku consists of 3 lines of 5, 7 and 5 syllables, and traditionally are seasonal. The first line sets the scene, the second introduces the action and the third creates a fusion of the two.

The Tanka consists of 5 lines of 5, 7, 5, 7 and 7 syllables, giving a complete picture of an event or mood. Rhyming verse is not called for, in either form.

Examples of Haiku:

*Where have summers gone?
Are our memories so false?
Were they not all good?*

.0.

*Daft old tiger moth
Sat on book to read it too!
Fine friendly fellow.*

(as happened in the garden last summer)

.0.

Example of Tanka:

*Pittisporum Tree
So loved by the house sparrows
Fluttering of wings
Squeaks and chirps of bird gossip
Shade and calm for birds and us.*

These verses can be so simple and evocative. Try your hand, and send them to The Pump, who will select and publish your entries.

Brian H.

SPAR



HAYLE. OPEN
6.30am-10pm,
SEVEN DAYS
A WEEK

Telephone us on [01736] 753327

FOOD TO GO

NATIONAL LOTTERY



FRESH BAKED BREAD

SPIT ROAST CHICKENS



WE ACCEPT CREDIT CARDS AND GIVE CASHBACK

Home cooked food in a
friendly, relaxing atmosphere.

Bed and Breakfast.

Parties catered for.

Wheel-chairs welcome.

While you're here...

Visit the University of the Third Age Art Exhibition.



01736 754241

*** All Day Breakfasts.**

*** Lunch Time Specials.**

*** Luscious Cream Teas.**

*** Packed Lunches.**

*** Flasks Filled.**

Open Every Day

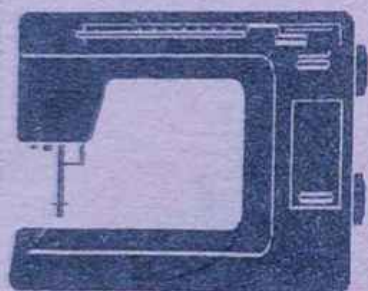
Mon - Sat 10 - 5.30

Thurs. 10 - 3.00

Sun. 11.30 - 3.00

Find us at :

*73, Fore Street, Copperhouse
Hayle, Cornwall, TR27 4DX.
(Next to 'The Jolly Bodger')*



Carmel's Sewing Service

**Tailored Alterations and
Repairs**

Curtains and Soft Furnishings

Professional Service

Reasonable Prices

Items collected and delivered if required.

Phone Carmel on 01736 754241

or call at

The Mad Hatter Tea Shop.

73, Fore Street, Copperhouse, Hayle.