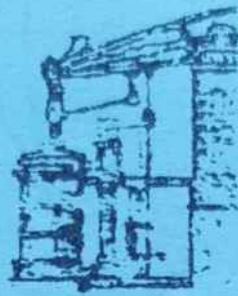


Issue No. 55

Dec 2003 -

Jan 2004

Circulation 2,500



HAYLE PUMP NEWSLETTER

FREE Copy – please take one (made possible thanks to our advertisers)

Christmas Time

What a magic time there is
At the ending of the year
When through the damp and
dreary days
The Christmas lights appear

The holly bears the berries
The church bells start to ring
And carollers on every corner
Tempt us all to sing

The festive mood, enchanting
Races round and starts to grow
Captivating young and old
Giving off a mellow glow

The streets and shops, so finely dressed
In silver and in gold
With tinselled trees and coloured lights
Deny the dark and cold

And everybody feels the joy
That giving satisfies
For who would dare to put a price
On stars in children's eyes

The smiling faces all around
The warmth when strangers greet
The charity and kindness felt
Make Christmas time complete.

N.A. Bodilly

Greetings To All Our Readers.

Hayle Pump Newsletter
Unit 14, Pratt's Market, Chapel Terrace
Hayle TR27 4AB

email: haylepump@theturks.fsnet.co.uk

**Closing date for
next issue :
20th January 2004**

Advertising Rates

Full page (130 x 190mm) £35.00
Half page (130 x 95mm) £20.00
Quarter page (63 x 95mm) £11.00
Eighth page (63 x 42mm) £6.00

If you wish to advertise please contact Sarah Turk at the address below.

Editorial Team Members

Tim Appleton

N.A. Bodilly

Goudie Charles (Editor)

01736 757351

Mel Jones

78 Hayle Terrace

Hayle TR27 4BT

01736 757560

Jeremy Joslin, Bajjer Arts

10 Foundry Hill

Hayle TR27 4HW

01736 756756

Jeff & Sarah Turk

35 Penpol Terrace

Hayle TR27 4BQ

01736 752319

Roger Winterburn (Secretary)

01736 756393

You can leave your news, letters, notices etc. at our unit in the market, or with any of the team. You can also use any of our drop-off points:

At Foundry

Biggleston's Hardware

Colin's Market Garden

Hayle Electronics

At Copperhouse:

Jolly Bodger

David Moyse Clothing

Hayle Bookshop & Gallery

The Hayle Pump would like to remind readers that items, or articles and Public Notices are accepted as points of view and are not necessarily the opinion of the Newsletter Team. Correspondents are reminded that all material submitted must be signed with your name and address, and if possible, telephone number for validation. This will not be printed if you don't wish it to be. We reserve the right to refuse or edit items sent to us.



NEW LOOK AT COPPERHOUSE

Aaron and Sallie Osborne have opened a unisex boutique in Fore Street. It is next to The Mad Hatter and is called HELLO GORGEOUS. The shop is targeting the younger generation – the late teens through to 20 -30 years, and will fulfil a life-time ambition for Sallie, a woman with a passion for fashion.

Just the other side of The Mad Hatter The Jolly Bodger has moved from his old shop, which has been taken over by a firm of solicitors Thurston Hoskin. Thankfully he has not gone far, just around the corner, and he offers the same friendly service as before.

A second boutique will shortly be opening on the corner of Market Square next to Warren's Bakery. It is undergoing renovation at the time of writing.

A £1.00 shop has recently taken over the Eclipse premises, and the Cinnamon Trust will be moving into the old Daniel's Freezer Centre. And it looks as if finally money will be available to restore the old cinema.

All these new businesses are very welcome and we wish them every success.

S. Turk

**JUST
DANCE**

MOBILE PURVEYOR OF
QUALITY SOUNDS FOR
ALL OCCASIONS
ALL MUSIC - ALL TASTES
CALL STEVE ON
07740 436 969



HAYLE DECORATIVE LIGHTING NEWS.

Phew! By the time you read this, the weeks of hard work will be over, and hopefully you will soon be looking at our best display ever.

I'm pleased to see that more and more houses are joining in, every-

gorgeous

Funky Fashion for Girls and Guys.
Stockists off Bench, Chilli
Pepper, Pussycat, Star-
fish, Gorgeous Couture
and more!

NOW OPEN

Tel: 01736 759664
71 Fore street
Hayle,



THE JOLLY BODGER
75-77 FORE STREET
HAYLE 752091

BLACKFRIARS PAINT
HOUSE AND CAR KEYS CUT
HARDWARE
GIFTS
SOUVENIRS



Ho! Ho!
Ho! Merry
Christmas
to you all

one working to make Hayle a bright and cheerful place to live, and even if you are not able to put up lights on your house, I want to thank everyone who has put money in the tins, bought a Quiz sheet, come to our Quiz nights, come to our Raft Race and sponsored the Cycle ride.

If I had £1 for everyone who has said "You're starting early aren't you?" then I would be able to put a substantial amount into the collecting tins for the Lights! Hayle is a very long town, from Tempest's to Lidl's is two miles and our small group of workers is hard-pushed to get everything up in time. We have to wrap lights around sixty four Christmas trees alone - spare a thought for us when you are doing yours.

Ray Wyse of Biggleston's Hardware

(who has been of invaluable help to Hayle Decorative Lights) is going to perform the BIG SWITCH ON at Commercial Road Car Park, on **FRIDAY DECEMBER 5TH**.

Hayle Town Band and a combined Schools Choir will be there, and hot food and drinks will be served at the Day Care Centre.

Richard Horwell, Chairman
01736 752597



AND I'D LIKE IT
DEEP PANCRISP
AND EVEN

HAYLE WATERSPORTS ASSOCIATION

As the year draws to a close, may I bring you up to date on what we have achieved during the past months.

After an unsuccessful attempt to obtain Lottery funding a complete rethink was required. Much credit is due to the committee members for the time and effort put in to come up with a new approach. New blood (perhaps not the right word!) new members together with a new chairman whose direction pulled us all together. Our presentation to Hayle Town Council met with their unanimous approval with promises for fu-

ture help and we met Hayle Area Forum on the 28th November. Our next obstacle is planning permission and preparation for this is well in hand.

September saw a Watersports Fun Day held on Copperhouse Pool. The weather was just perfect and those who attended will vouch for its success.

Did you see the photograph in the 'Cornishman' 13th November of the Regatta held on the Pool way back in 1908? We intend to have this annual event back in Hayle again.

On behalf of all our committee may I wish the good people of Hayle a very Happy Christmas and a Prosperous New Year.

Viv Lewis, Press Officer, 4 Undercliff, Phillack, Hayle tel.. 752010

digitech Services

Personal Computer Services

- PC systems built to order
- PC upgrades
- PC repairs
- Home & Small business networks
- Software installation & setup
- PC maintenance
- Internet installation & setup
- ADSL Broadband installation (subject to availability)
- Peripherals supplied & installed

Competitive pricing structure - Free quotations
Work carried out at your premises
(where possible)

URL www.digitech-services.co.uk

E-Mail service@digitech-services.co.uk

Telephone - 01736 757267 Mobile - 07976 715141



RSPB NEWS

As usual, October has been a terrific month for birds on the estuary with over a thousand wigeon and 400 teal competing for space with all the waders and gulls at Lelant Water and Copperhouse Creek. Notable finds during this period were of North American stock with a green winged Teal and American wigeon early in October being joined by as lesser yellowlegs on 22nd. The 'legs' and teal are still here but they take some finding with so many birds to sift through. The best

chance of finding them is on the rising tide at Lelant Water when the redshank-like lesser yellowlegs (as its name suggests it has yellow – no red – legs) is forced out of the tidal creeks along the railway to roost with all the other waders below Lelant Saltings railway platform. On exceptionally high tides it flies across the road to roost with the redshank in Ryan's Field. The teal, however, is easier to see from the Hayle Causeway, usually standing on the riverbank with its European counterparts. It can easily be distinguished from these by its vertical white breast stripe and lack of horizontal white line to the wing edge. Good hunting!

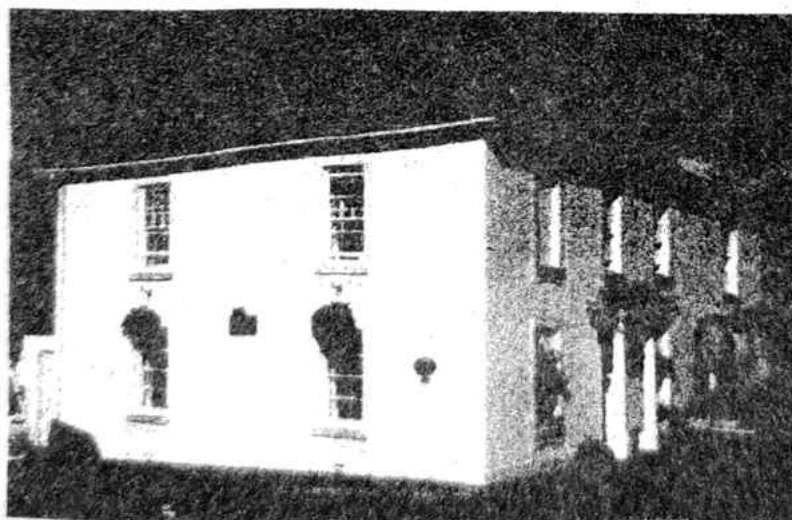
Dave Flumm, RSPB Warden

CRANFORD HOUSE BED & BREAKFAST

OPEN ALL YEAR – CHILDREN WELCOME

*ALL ROOMS
EN-SUITE*

*NON
SMOKING*



*ALL ROOMS
EN-SUITE*

*OFF ROAD
PARKING*



PETER & PEGGY DARLOW

01736 752618

Foundry Hill * Hayle * Cornwall * TR27 4HW
cranford-guesthouse@talkgas.net

Merry Christmas from Hayle Town Council

Room 5, Passmore Edwards
Institute, Commercial Road,
Hayle TR27 4DE
Phone fax: 01736 755005
(Hours 9.30 -12.30)
Town Clerk: Eleanor Giggall

David Barratt
David Baxter
Paul Birch
Brian Capper
Peter Hampson
Michael Kleinman
Robb & Terry Lello
Shirley Oliver
Owen Philp
John Pollard
Marjorie Roberts
Clinton Thomas
Stella Thomas
Barbara Williams

If you have anything you wish to discuss with your councillor, please phone the Town Clerk on 01736 755005 who will assist you.

MAYOR'S CHRISTMAS MESSAGE

Christmas is such a busy, happy time of the year. Even in all the hustle and bustle people are so nice to each other and I often think to myself, why can't they be like that all the year round?

School teachers are exceptionally busy with the children rehearsing the various versions of the Nativity Play, which I hope brings home to them the true meaning of Christmas with the birth of Jesus.

It has been said that some 30 years ago on the day the Foundry clock stopped, Hayle stopped. On Wednesday 30th July this year at 11am, I was very privileged to restart the restored clock. It has sprung back to life and will be kept ticking by the dedication of Ray Wyse. So, time no longer stands still in Hayle, and like the Nativity, Hayle is born and we all look onward and forward to its regeneration.

My Christmas starts with the Midnight Mass and as we celebrate Christmas Day in our warm comfortable homes, let us give a thought to the destitute and homeless and give our thanks to those very kind people who give up their time and open soup kitchens etc. to give them a hot Christmas meal.

I switch on the 'Tree of Light' on Friday 28th November by Marie Therese House at St Michael's Hospital. It is a very special time for us

to remember loved ones and to thank St Julia's Hospice, Marie Therese House and St Michael's Hospital for their duty of care, love and dedication. Hayle is so well blessed to have such a unique complex.

We have numerous groups and organisations in our town (too many to name individually) and I thank everyone most sincerely for all their hard work during the year. It would be true to say that many of our groups and organisations could not function without the dedication of their volunteers. It is to these volunteers I say a very special thank you as I know that you give up such a lot of your time and energy so willingly and with very little recognition and thanks.

Christmas can also be a very sad time for some people and to you I would say have faith and courage and I hope the year ahead will be easier and kinder to you.

I wish each and every one of you a very happy and blessed Christmas and good health in 2004.

*Councillor Marjorie Roberts,
Mayor of Hayle*

In the park a savage dog rushed towards a woman. Its owner did nothing to intervene. "Why don't you call the dog off?" shouted the terrified woman. "I can't," replied the man. "His name's Caesar."



J C ELECTRICAL



Your complete 24hr Electrical Service

City & Guilds Qualified
Tests to 16th Edition BS7671

Rewires, New Build, Lighting, Extra Sockets,
Showers, Heating

Prompt Reliable Service
All Work Guaranteed

Free Estimates

Hayle 01736 754543
Mobile 07739 577 549





SMITHY'S

TOOL HIRE & SALES

HIRE TOOLS FOR TRADE & DIY



UNIT N ST. EARTH INDUSTRIAL ESTATE

(THE OLD CREAMERY, A30 HAYLE - PENZANCE ROUNDABOUT)

**YOUR LOCAL INDEPENDENT TOOL HIRE SHOP
OFFERING YOU THE BEST IN HIRE RATES, BACKED UP
BY A SERVICE - SECOND TO NONE.**

- * Mini-Digger
- * Mixers
- * Compactors
- * Trestles
- * Shredders
- * Power Barrow
- * Breakers
- * Stihl Saws
- * Acrow Props
- * Alloy Towers
- * Roof Ladders
- * Floor Sanders
- * Work Top Jigs
- * Petrol Strimmers / Hedgetrimmers
- * Rotavators
- * Carpet Cleaners
- * Pressure Washers
- * Steam Wallpaper Strippers
- * Block Splitters

AND LOTS MORE!

RING US NOW ON

01736 75 72 77

THE SEARCH FOR SHANGRI-LA

Ended, approximately two hours after landing on Asian soil! Turkey is a magical place and in particular the beautiful ancient flood plain on which Dalyan is founded. Even the name conjours up a lazy lollingness which is borne out by the tranquil lagoons, stately mountains and laissez-faire pace of life. Add to that magnificent beaches, mud baths, sulphur springs and some wonderful people and it would probably be unreasonable to ask more of life.

After six days in this paradise we were beginning to kick ourselves back into action, after all it is ridiculous to fall in love with the first place you go when there is a vast country

out there to explore. So we set out on a night bus to Konya, reputed to be the holiest city in Turkey and home of the Mevlana museum, a tribute to the founder of Sufism. Konya itself is anything but beautiful with mile upon mile of high rise looming on a vast deserted steppe, it was a junction on the old silk road so is a centre of commerce but we soon headed on out to Cappadocia – a fantasy landscape of 'fairy chimneys' and cave dwellings formed from volcanic tuffs.

Heading east again we took what turned out to be a 17 hour bus journey to Van on the shores of Lake Van which is seven times the size of Lake Geneva and famous not only as the origin of the swimming Van cats but also for its highly alkaline waters which clean without deter-

HAYLE HEALTHFOODS

www.haylehealthfoods.info

Quality Natural & Organic Foods
Own Label & Branded Supplements
Herbal & Homeopathic Remedies
Flower Essences * Books
Subliminal CDs * Sports Products
Toiletries * Household Goods
Sprouters & Organic Seed Mixes
* Ample Parking Behind Shop*
Friendly Welcome & Willing Assistance



CHRISTMAS GIFTS & GOODIES

SPECIAL ORDERS WELCOME



3 East Quay,
Hayle TR27 4BJ
Tel 01736 755095

MAKE 2004 THE YEAR
YOU MOVE FORWARD
ACHIEVE YOUR AMBITIONS
KEEP YOUR RESOLUTIONS
WITH HELP FROM
INNER TALK
JUST ASK FOR FULL DETAILS

gents. We spent a day walking by the lake, seeing the local women cleaning their goat and sheep fleeces by beating them on rocks then rented a tent plus sleeping bags for the princely sum of about £1.

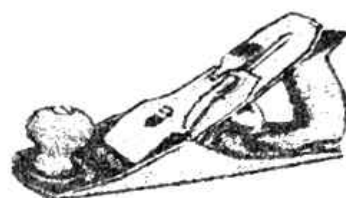
Rather reluctantly leaving this virtually tourist-free area we headed south to Urfa, then travelled up Mount Nemrut to see, at sunset, the giant heads created by King Antiochus (or more likely his minions!). Dropping down to the coast we spent quite a few days interspersing coaches and dolmus to travel right to the Datca peninsula between the Med and the Aegean then across the bay to Bodrum where Patrick has now purchased a catamaran and then back 'home' as it already feels, to Dalyan for a long loll!

When we finally set off for Cornwall it turned out to be 6 hours from Dalyan to Gatwick and 18 hours from Gatwick to Camborne so we will certainly not feel far away in Turkey. Just as we landed the sun went in and torrential rain plus freezing cold wind greeted us, perhaps it was an indication that we should have stayed away? Still it was good to know that everyone here had had a really good warm summer up till then!

Meanwhile my hardworking managers are keeping Hayle Healthfoods well stocked ready to meet all your winter supplementary needs to ensure you get through the demands of the festive season in the very best of health. With love and light to all.

Felicity & Patrick (ex Hayle Healthfoods)

HAYLE JOINERY



FOR ALL OF YOUR JOINERY
REQUIREMENTS IN SOFTWOOD OR
HARDWOOD.

DOORS, WINDOWS, CABINETS,
BOOK CASES, STAIRS.

TEL/FAX 01736 751715
MOB 0779 950 3303

HAYLE LIBRARY NEWS

For the month of December we will be having a small Christmas Fair with lots of goodies for sale and refreshments will be available on Friday 19th, we hope you will come along and support us.

Hayle Library is now expanding its collection of games and videos for hire. The prices range from £1 to £3 a week! For the avid reader we now have in stock the BBC's The Big Read 21 top titles. Would you like to try something different? Then why not try our new book promotion Flashback, books about history written in every day language.

If anybody wishes to learn how to use a computer, develop their skills or have a computer query you can

Fernleigh'



**BED & BREAKFAST
EN SUITE
COLOUR TV
TEA & COFFEE
NON SMOKING
ALL ROOMS**

**26 COMMERCIAL RD
HAYLE
01736 752166**

book one or two hour sessions with our new Study Support Officer James. James will be here all day every Friday, please book in advance for your appointment by contacting the library, it is FREE!

We are looking to develop our service of delivering books to the housebound and on Friday 5th December between 2.30pm-4.30pm our Outreach Officer will be at the library hoping to recruit people who would like to use the service or are able to deliver books.

Pupils of two of Hayle's schools, Bodriggy and Penpol, have recently met the Children's Laureate Michael Morpurgo at the Tate Gallery and will have a follow up visit to the li-

brary with author Bridget Crowley. The visits are art and writing related and all children's work will be displayed at the library from 15th December 2003 until 24th January 2004. **Story Times – Free! (10.30 -11am)**
2nd Dec, 16th Dec, 13th Jan, 27th Jan
All new customers welcome.

We would like to take this opportunity to wish our customers a Merry Christmas and a Happy New Year.

If you wish to contact us please phone 01736 753196, email us at hayle.library@cornwall.co.uk or fax us on 01736 755932.

Hayle Library Staff





NEW GARAGE IN HAYLE

Hello Hayle....please let us introduce our garage to you: **SLOW-FITT** and **THE AUTO CENTRE** (formerly the Tolroy Garage), positioned for easy access on the **B3302**.

A few facts about us: we are a family run garage with family values, where courtesy and good service are paramount. We have established a very successful business in Helston and have been trading for over 20 years and in that time we have built a reliable skilled workforce dedicated to repairing customers' cars and vans to a very high standard.

This has enabled us to become the largest rescue and recovery contractor in West Cornwall for the RAC and the AA offering a dedicated service to many motoring organisations as well as serving private customers via our 24 hour service. You have probably seen the green and yellow trucks and vans driving around Hayle – this is now Hayle's professional towing company and in your hour of need, will aim to assist and resolve your problems.

We are also Bosch Automotive Service Agents, giving us the skills to handle petrol and diesel fuel injection systems, tackling diagnostic procedures unique to the modern motor vehicles.

We can offer general garage facilities, but also a lot more:-

- General servicing and repairs

- MOT testing
- Tyres
- Batteries
- Exhausts
- Brakes
- Starter motors & alternators
- Shock absorbers
- Clutches
- Air conditioning
- Bosch diagnostics/correction
- Engine rebuilding, head reconditioning, general machining etc.
- Rescue and recovery
- Helpful advice

We are proud to be accredited with the ISO 9001/2000 quality assurance standard and to be awarded the full scope certification for the whole of the garage operation. All works are signed off and checked for quality and value, this, we trust, ensures our customers' complete satisfaction.

We are conscious of the fact that when we have your car in our care we have your life in our hands and we take that very seriously indeed.

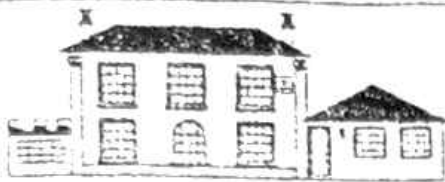
As a special introductory offer why not take advantage of our FULL WINTER SAFETY CHECK - completely FREE OF CHARGE!!

TELEPHONE: 01736 757777 – speak to Phil, Nick or Ian, stating "The Hayle Pump".

We would like to take this opportunity to wish you a Merry Christmas and a Happy New Year, and look forward to being of service to you in the near future.

Advertisement feature





Brookvale

Residential Care Home for the Elderly

Family run home, by the resident proprietors Mr & Mrs Broadbridge & Mrs Pleasants RCN, which prides itself on a personal and caring environment. Situated in the centre of Hayle close to all amenities.

Private and DSS residents welcome whether short or long stay. Fully registered with the CCC, and a member of the Cornwall Care Homes Association.

- all necessary care & assistance supplied
- large garden and patios
- two lounges & spacious bedrooms
- full 24 hour care & central heating
- weekly hairdresser & chiropodist
- domiciliary services, day care & M on W

6 Commercial Road
Hayle, Cornwall TR27 4DG

Telephone: 01736 753608

THE VIEW FROM THE STEEPLE

**“Raise the song of Harvest Home
All is safely gathered in
Ere the winter storms begin.”**

This year's fine, mild autumn made the harvest much less hit and miss for our farmers and I enjoyed sunning myself on the steeple parapet while watching the corn being gathered in. St Elwyn's celebrated its Harvest Festival with a difference this year. Instead of just giving thanks for the bounty of our local fields and orchards, we also remembered the farmers of Afghanistan and their struggle to restore their land after years of war and drought.

Talking of being under siege, fire-

work night started at the beginning of October and went on for nearly five weeks. Thunder flashes and other pyrotechnical delights echoed around my belfry as soon as darkness fell each evening. All my feathered neighbours were reduced to nervous wrecks by the time November 5th arrived, but horror of horrors it rained and we continued to suffer until the weekend before it all went quiet again.

Well, it did for a while. I had just settled down to catch up on my lost sleep when I was shaken off my perch by the Town Band's percussion section going at full throttle, at the Remembrance Sunday Concert. I found myself dancing up and down the organ pipes to their rendition of the samba. It quite blew the cobwebs away!

The Hayle Town Band were fresh from their victory in Paignton where they won first in their section, top conductor and best bass section awards. Well done to everyone concerned on another great season in competitions.

Also doing us proud were Hayle Male Voice Choir and the Ladies Choir with Cllr. Mrs Shirley Oliver as compere for the evening. At least my ruffled feathers were soothed by a pleasant melody or two.

With harvest and bonfire night behind us we can now look ahead to Advent and Christmas. St Elwyn's Christmas Fair went very well this year. I think ours may have been the

first of the season. I always do well from the cake stall. The children's Christingle Service is on Sunday November 30th.

Next time I see you all it will be 2004!

Nadelek Lowen everyone and a prosperous, peaceful New Year.

The Sanctuary Sparrow



HAYLE TWINNING ASSOCIATION

We meet every 2nd Tuesday in the month at Passmore Edwards Institute, 7pm. We visit our twin town Pordic in Brittany in September and host visitors from Pordic in May.

There are many other events during the year, why not join us? Come along to a meeting or phone Maurice on 01736 753250.

Jesus Christ the Light of the World

He was in the world, and the world was made by him, and the world knew him not. He came to his own, and his own received him not.

But as many as received him, to them he gave power to become the sons of God, even to them that believe on his name.

Which were born, not of blood, nor of the will of the flesh, nor of the will of man, but of God.

And the Word was made flesh, and dwelt among us, (and we beheld his glory, the glory as of the only begotten of the Father,) full of grace and truth.

John 1 v 10-14

The Angarrack Inn is under new ownership

Simon & Alison Bellamy welcome everyone to
The Angarrack Inn

Opening Hours:

Monday to Saturday 11.30am to 2.30pm & 6.00pm to 11.00pm
Sunday..... 12.00pm to 3.00pm & 7.00pm to 10.30pm
(Winter hours subject to change)

Food available:

Tuesday to Saturday 12.00pm to 2.00pm & 6.30pm to 9.00pm
Sunday 12.00pm to 2.00pm—booking advisable

>Real ales, home cooked food and a warm welcome await you<

We are pleased to support local producers and suppliers.

****Now taking bookings for Christmas****

Tel No. 01736 752380



KIND OF CORNISH



First up is an unusual but nevertheless very effective offering, featuring some familiar seasonal songs in a very different way. "Christmas Time", by the ever popular Cape Cornwall School band Hammered Steel, gives the steel band treatment to, amongst other Yuletide favourites, "Mary's Boy Child", "Santa Claus is coming to town", as well as a couple of West Indian offerings, "Drink a Rum" and "This Christmas". As the many devotees of this band will know, the playing is impeccable and the music rhythmic and infectious. This CD is guaranteed to make your Christmas party go with a swing, and will pro-

vide some welcome Caribbean warmth to offset the cold of the deep midwinter. (44 mins, £11.50.)

Viv Rodd, the Hayle born-and-bred pianist, composer and arranger, is arguably the finest jazz musician ever produced by the county of Cornwall, and during his long and distinguished career he has played with many jazz greats, American as well as British. Happily, after many years away he is very much back in residence in the Duchy and making frequent public appearances in West Cornwall. About once a month he appears at the Tolcarne Inn, Newlyn, in a duo with the gifted guitarist Alan Thompson, who is also the Tolcarne's landlord. "Dialogue" is a CD featuring Viv and Alan, and is a superb example of the musicianship

PHILP'S FAMOUS PASTIES

EST



1958

BAKING 7 DAYS A WEEK
FOR THE GREAT TASTE OF
CORNWALL'S
PREMIER PASTY MAKERS
WITH OVER 40 YEARS
EXPERIENCE
VISIT US NOW
AT OUR SHOPS AT-



**1, EAST QUAY,
HAYLE**

01736 - 755661



**1, FOUNDRY HILL,
HAYLE**

01736 - 753302



**MARKET PLACE,
MARAZION**

01736 - 710332



**THE SQUARE,
PRAZE & BEEBLE**

01209 - 831360

and interplay of these two extremely talented musicians. The varied and interesting programme includes standards such as "My Funny Valentine" and "Stella by Starlight", as well as such jazz tunes as Herbie Hancock's "Dolphin Dance" and Charles Mingus' "Goodbye Porkpie Hat", and a lovely, moody Viv Rodd original "Green in Blue", dedicated to pianist Bill Evans. Playing without drums and bass can sometimes be a risk, but Viv and Alan turn it to their advantage by their brilliant use of the extra space and flexibility provided. Forget the local scene, this is an excellent jazz CD by *any* standards, and the fact the great jazz guitarist Jim Mullen provides the sleeve note speaks volumes for the high esteem in which Viv and Alan are held on the jazz scene. Very highly recommended. (48 mins, £11.50.)

(For those who like their jazz live, the Tolcarne Inn, Newlyn presents duo jazz every Sunday lunchtime, featuring Alan Thompson with various pianists (including Viv Rodd), guitarists or bassists, and admission is free. Phone 01736 363074 for details.)

Both CDs can be obtained from:-

West Penwith Music

Union Street

Penzance (Tel. 01736 364440)

Goudie Charles

HAYLE IN BLOOM

'Hayle in Bloom' – it is so much more than that, and a few people do not seem to realise it.

Of the five categories on which we are judged, as well as Floral Displays, Landscaping, Sustainable

Bruce and Rosalind
wish you all a Happy
Christmas & a
Prosperous New Year
.....

The Farm Shop
31 Penpol Terrace
Open 6 days a week 8.00—5.00

For all your local
produce, fruit,
vegetables
and
plants.



Development and Public Awareness, there is also Environmental Quality. This is *everyone's* responsibility and covers litter and dog fouling. We have to thank Lance Coulson, who, over the summer months, picked up our litter, and is still doing it. But it's up to us not to drop litter in the first place and to clean up after our dogs.

How proud we are of this year's achievement and all those involved. Thank you.

Ann Foreman

Diner: "Waiter, what on earth is this?"

Waiter: "It's bean soup, sir."

Diner: "I don't care what it's been, what is it now?"



FITNESS CLASSES IN HAYLE

**AT THE PASSMORE
EDWARDS INSTITUTE**

Monday... Step Class

Wed... Tums & Bums

*(Gentle exercise for all
shapes & sizes!)*

Fri.. Strength & Flexibility

All Classes Start at 6.30pm

Cost £2.50 per session

Info: Sylvia 757560

BUMPER CHRISTMAS MUSIC QUIZ

This year we're offering the chance to win a magnificent £50 cash – what a help with those January blues/bills! All the answers relate to something connected with the festive season, so good luck, Merry Christmas and Happy New Year and we'll start with an easy one.

1. Noddy Holder and the boys – annual good wishes.
2. The old groaner dreamt of this.
3. To the county man it was just another story.
4. Pop's Peter Pan twig and swig.
5. Wacko's rockin' bird.
6. In Lionel Bart's musical they all wanted more.
7. Neil Sedaka's "Oh" girl.
8. Little Brenda was rocking around it.
9. He had no particular place to go.
10. Manchester rockers with a light weight brother.
11. Paul Nicholas had one for an old relation.
12. Elton wanted us to step into it.
13. What the wild man of Brum and his Wizzards wanted.
14. The Boney people's new arrival.
15. Tchaikovsky's savoury suite.
16. Cliff Richard said it was this saint's day.
17. Robbie Williams' holy guardian.
18. Nina and Frederik's seaside animal.
19. Little Eva's Bernard Matthews dance.
20. Kate said this month would be magic.

First all-correct answer out of the hat wins. Closing date 20th January.

MUSIC QUIZ ISSUE 54

ANSWERS

- | | |
|------------------|---------------------|
| 1. Crocodile | 11. Snake |
| 2. Alligator | 12. Chicken |
| 3. Cow | 13. Trout |
| 4. Swan | 14. Buffalo |
| 5. Rats | 15. (3) Dog (night) |
| 6. Spiders | 16. Bee |
| 7. Deer (hunter) | 17. Horses |
| 8. Fox | 18. Frog |
| 9. Lizards | 19. Tiger |
| 10. Elephant | 20. Bull |

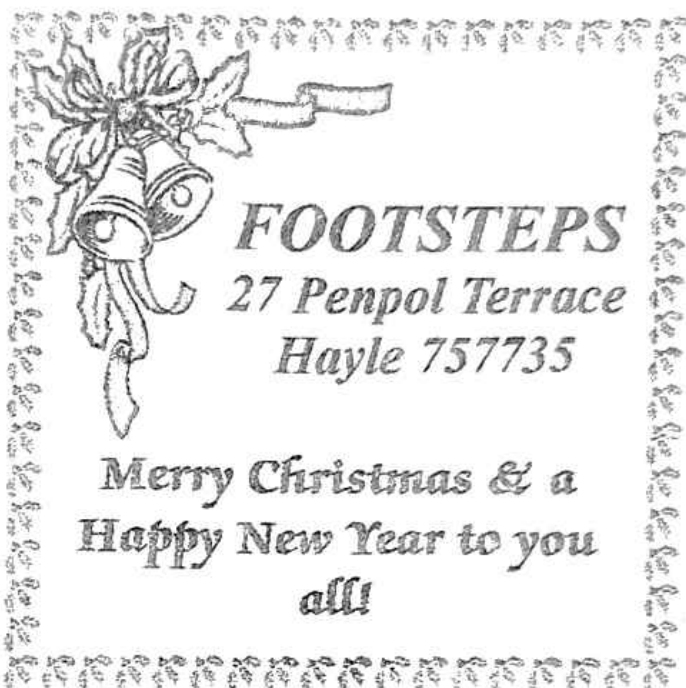
Thanks to all those who entered and the lucky winner is A. Boyes who has donated the £20 towards Hayle Christmas Lights.

HARBOUR LIGHT



The last six months have been a busy and exciting time for everyone concerned with the Harbour Lights Arts Project. During the summer holidays, around 30 young people were given the chance to explore a wide range of creative activities when they took part in a series of four 3-day projects – the staging of a fashion show, the making of a music video and junk samba and poetry/creative writing workshops.

These workshops were offered free of charge thanks to the Cornwall



FOOTSTEPS

27 Penpol Terrace

Hayle 757735

*Merry Christmas & a
Happy New Year to you
all!*

Independent Trust Fund, the Neighbourhood Renewal Community Chest and the Church urban fund.

The creative energy exhibited by these young people, and the work that they were able to achieve in

D.W. CAR & VAN HIRE HAYLE



**FREE DELIVERY & COLLECTION
VERY COMPETITIVE - ALL
INCLUSIVE PRICES
NO VAT- NO HIDDEN EXTRAS**

**(Saloons, Estates, People Carriers & Vans)
For Friendly Service please call Doug**

Hayle 01736 754197 Open

Mobile 0778 856 3966 7 days

www.dwcarandvanhire.com

Email doug@dwcarandvanhire.com

PENPOL GARAGE

(Neil Murley & Martin Richards)

17a Penpol Terrace

Hayle

Tel. 01736 757011

Mob. 07971 842908

**all general repairs on
all makes of vehicles**

MoT work

Tracking

Tyres

MG specialists



Recommended

such a short time, was truly astonishing.

In order to encourage and develop these talents we have started regular weekly workshops in drama, music, visual arts and poetry, with dance workshops to follow in January. These take place in St Elwyn's Hall (poetry in the church itself) on weekdays between 4.00 and 5.30. Please contact us for further details.

We would like to take this opportunity to thank all the young people whose enthusiasm and commitment is enabling this project to work towards its goal of being able to offer everyone in the community a chance to discover their own channels of creative expression – thanks also to all those who have given us such support and encouragement.

SAMBA PERCUSSION WORKSHOPS On the 14th January we are starting the first of our adult workshops. These will explore the rhythms of samba and will take place on Wednesday evenings between 7.30 and 9.30 at St Elwyn's hall. No previous percussion skills are required but we do advise that you book for these classes.

Harbour Light is currently looking for volunteers to help in the supervision of some of the workshops. If this may be of interest to you, or if you have any suggestions for future workshops, please contact Graham Macey on 01736 757423.



Lifeboats

Royal National Lifeboat Institution

www.lifeboats.org.uk

HAYLE BRANCH RNLI NEWS

On behalf of the committee members I would like to thank all the people who have supported our events throughout the year. For the branch it has been another successful year with fund raising events,

and we also sold all our National Raffle tickets. A recently held sponsored walk by local boat owners and branch members supported by Barclays Bank raised in excess of £1,700 – excellent! Thanks to all concerned.

One of the highlights was having the flag put in the Isis Gardens. Unfortunately however we were all most upset last month when our new flag went missing, and we had to borrow one. It beggars belief what some idiots will do, but if there is a shred of conscience and decency in one of the perpetrators, the flag can be returned by leaving it in Dylan's Café porch.

A personal thanks from me as chairperson to all the committee

members, their families and friends for their hard work and support, and I wish everyone a very Happy Christmas and New Year.

Our next meeting is January 14th 2004, 7.30pm St Elwyns Church Hall. New members welcome.

Shirley Hayes, Chairperson



AUTUMN ON THE MILLPONDS

Since last winter's blitz on the dreaded parrot weed, the ponds have taken on a new lease of life and the improvements are definitely having a "knock-on" effect as far as the numbers and varie-

Tel. 01736 752119

open 10.30/1.00pm & 2.00/5.00pm

Mob. 07730 733263

seven days a week

TREVASSACK NURSERIES GARDEN CENTRE HIGHLANES HAYLE

Christmas trees fresh cut 4ft—16ft from £5.00

Noble non drop from £13.00. Holly wreaths

*Primroses * Pansies * Violas*

*Wooden troughs * Log edging * Decorative baskets*

*Sundries * Glazed Pots * Shrubs etc.*

ties of species around the site are concerned.

The trees around the water's edge have looked magnificent, their rich autumn tints reflected in the water. The mallard flock now exceeds 30 ducks, both adults and juveniles, and the moorhens are increasing again after a couple of bad years. We only managed one cygnet, but at least he is thriving. The heron still visits us, but the ponds are now attracting an increasing number of egrets, seven were seen there on 3rd November. The kingfishers returned this summer and a pair of little grebes came back this autumn, both after an absence of 3 years.

In the woodland along the Rope Walk there is a flock of about 50 long-tailed tits, which are regular vi-

sitors to the site.

With their recent success in Britain in Bloom, the Millponds will undergo an extensive programme of winter maintenance over the next 2 years including some much-needed coppicing of the willows at the far end of the Inner pool and the removal of the last of the parrot weed.

This year's achievements were the culmination of 18 years hard work by a wide variety of people, who have all contributed to what we now have in their own very special ways. Thank you all for what you have done but we have still got a way to go yet. Now that we have won the cup we intend to hang on to it for a while, so watch this space!

Georgina Schofield
Volunteer Wildlife Warden -
Hayle Millponds

NEW RANGE OF ECOMATIC SPECTACLES

LIGHT REACTIVE LENSES
RANGE OF STYLISH FRAMES

SINGLE VISION FROM £85.00 COMPLETE
VARIFOCALS FROM £99.00 COMPLETE

F.L. KEAST F.B.D.O.

DISPENSING OPTICIANS

18 COMMERCIAL ROAD HAYLE TEL. 753145

&

21 ALVERTON STREET PENZANCE TEL. 366106

CHRISTMAS COMES BUT ONCE A YEAR

(Except that when you have had the year we have had it seems as though it just finished.)

Greetings my fellow townfolk. Well it's hard to believe that the festive time approaches what with the mild weather and all. I was only playing a few holes last week up at Hayle Golf and commenting that we were lucky to get a dry course in November. Reasons to be cheerful no 77.

Our preparations have been delayed what with flu, colds and my better half's recent brush with illness. On that note her saviour was a move from West Cornwall's traffic-like corridors to the peace and tranquillity of St Michael's. A finer group of carers I have yet to meet and any talk in years to come of ending our fine hospital will find me at the front of the protest queue with my pitchfork at the ready. Thank you to all the staff at St Michael's for the kindness they showed us, it will not be forgotten.

The Foundry Bar has been working hard to bring various activities to keep people interested. Some with mild success. We will still maintain a winter opening policy despite advice to the contrary because we believe that the only way to help Hayle get closer to the year round traffic St Ives is experiencing is to stay open. The same reasons apply to the deli, Take Me Home in Copperhouse.

SINGER & PFAFF SEWING CENTRE

MR & MRS D.M. GIRLING

AUTHORISED SINGER SERVICE
CENTRES FOR CORNWALL

ALL MAKES SERVICED

AT

2 QUEEN STREET, PENZANCE

01736 - 363457

&

11 JOHN STREET, TRURO

01872 - 225168

*NEW & RECONDITIONED
MACHINES ALWAYS AVAILABLE*

Many people asked if we were going to close for the winter, but we said no! No longer will we hibernate till Easter, it's not our way. Nevertheless, we can't do it alone. Small traders, independents like your butcher, your baker, your haberdasher and indeed your local restaurants have rates, rents, wages and utilities monthly. They need your support. If you feel that your twice annual visit is enough so be it. But do not lament when your super little grocer or that great book shop have 'for sale' signs on them. They are clearly spelling out their intentions, namely "we're going to look for pastures new". If you want to attract business to your community you have to do

NEIL WADE
MOTOR ENGINEER
CENTRAL GARAGE
10A HAYLE TERRACE
HAYLE

*Merry Christmas and a
Happy New Year to all our
customers old and new
From Neil, Calvin & Billy*

HOME: 01209 610651
MOBILE: 07990 981546
WORK: 01736 756512



your own little bit. In doing our little bit, our popular Christmas party evenings start in earnest in December. Weekend slots are filling fast so if you would like a tasty set Christmas dinner with a difference book now with dates from Dec 3rd to Dec 20th. The Greek Club, a language group in Penzance and Redruth, is being hosted on Thursday 11th December with music and food from those ancient lands. Book now to join their numbers for a great night of tasty mezze and plate smashing. (Probably need to apply for permission to smash plates.) Wed 17th is our last quiz to raise money for the pool, fun starts at 8pm with a distinctly Christmas theme. We're closed Christmas Day but open at 6pm Box-

ing Day. The New Year's Event is Bombay Dreams, a fine play by Mr Lloyd-Webber translated into an evening of costume, music, superb regional Indian cooking and a party to end the year. Tickets are available from the bar.

Take Me Home will be open for Cornish products, tasty cheeses, biscuits, beverages, chutney jams, pastas, you name it. We're sourcing some new small producers, come and try Norma's home preserve. They are wrapped in an old fashioned way with a real taste of home under the lid. Norma makes her provisions in Redruth, and will be part of the Christmas hampers available from December 1st. We will be closed Christmas week 26th onwards and open after the snow clears.

Finally a fond farewell to our deli manageress Kerry Warren and her charming fellow Wills who have been great employees this year but sadly go back to Switzerland for the winter. We wish them every success and hope that next year we can tempt them to stay for the winter. From my wife and myself and all our staff we wish you all a very Merry Christmas.

***Chef John, Take Me Home Deli
and Foundry Bar & Restaurant***

What is the most popular wine at Christmas?

I don't like parsnips and Brussels sprouts.

FATHER CHRISTMAS ROUTES FOR CHRISTMAS 2003

Route 1 Mon 15th December

Mellanear Close
Albertus Drive
Trelissick Road
Water Lane
Trelissick Fields
Ash Drive



Route 2 Tues. 16th December

Penpol Road
St George's Road
The Pathway Fields
High Lanes
Harvey's Way
Curnow's Road
Ellis Way
Bodriggy Crescent
Penpol Avenue



Route 3 Wed. 17th December

St. Mary's Estate
Loggans
Golden Sands
Guildford Road & all off-shoots
Ventonleague Row
Dracaena Crescent/ Avenue
Prospect Place

Route 4 Thurs. 18th December

Lower Church St.
St. John's St., all off-shoots
Sea Lane
Trelawney Place/ Estate
Mount Pleasant
Treveglos
Bay View Terrace



Route 5 Friday 19th December

Treeve Lane
Trevarnon Lane
Mutton Hill
Turnpike Inn
Greenbank
Tresdale Parc
Gwithian Road
Kensa Way
Carnhell Green
Caddy's Arms

Route 6 Sat. 20th December

Leedstown (Duke of Leeds) &
most roads off the crossroads.

**Starting
each evening at 6.00pm
so bring your children out to
meet Father Christmas and
see his sleigh.**



Hayle Lions Club will be helping Father Christmas in his grotto at Wyvevale Garden Centre on the following dates, 1.30—4pm each day

Saturday 6th December
Sunday 7th December
Saturday 13th December
Sunday 14th December
Saturday 20th December
Sunday 21st December.

Hayle Lions Christmas Raffle Tickets will be available, the draw will take place on Sunday 21st December at Wyvevale Garden Centre. Prizes include a £100 garden centre voucher, a mountain bike and many other prizes.



Advent Service
 A lead into Christmas being
 held at Hayle Age Concern
 on December 4th at 7pm.
 Please come and join us.



Church

St. Elwyn's Parish Church

- Nov. 30 3.00pm Christingle Service
- Dec. 21 11.00am A Service of Lessons & Carols with Communion
- 24 5.00pm Crib Service
- 11.30pm Midnight Mass
- 25 10.30am Family Communion & Carols (a children friendly service)
- 28 11.00am Parish Eucharist & Sunday School

Phillack Parish Church

- Dec 21 9.30am Seven Lessons, Carols and simple Eucharist
- 24 11.30pm Midnight Mass
- 25 10.00am Family Eucharist

Gwinear Parish Church

- Dec 7 11.00am Christingle
- 21 4.30pm Service of Nine Lessons & Carols followed
by sherry & mince pies
- 24 11.15pm Carol singing & bellringing
- 11.45pm Candlelit Midnight Christmas Communion
- 25 10.30am Children's Service
- 11.00am Holy Communion
- 28 11.00am Holy Baptism

Gwithian Parish Church

- Dec 14 11.00am Holy Communion
- 7.30pm United Carols Evening followed by coffee
- 21 11.00am Nine Lessons & Carols
- 24 10.30pm Carols by Candlelight 'Your choice'
- 11.45pm Midnight Communion
- 25 11.00am Family Communion
- 28 11.00am Holy Communion

St. Erth Parish Church

- Dec 21 6.00pm Carol Service
(united with Methodists at Church)
- 24 11.30pm Midnight Mass of the Holy Nativity
- 25 10.00am Parish Communion
- 7.00pm Compline
- 28 8.00am Holy Communion
- 10.00am Parish Communion
- 6.00pm Evensong



THE GODREY TEAM MINISTRY

The Parishes of Phillack with Gwithian, Gwinear, St Erth & St Elwyn, Hayle
 Team Rector ~ Revd Canon Tony Neal (01736-753541)

Services



Day Care Centre Carol
Service will be held at
Phillack Church on
December 22nd at 1.45pm

Hayle Methodist Church

- Dec 1 7.30pm Open Fellowship Christmas
Evening—All welcome.
Dec 7 11.00am Advent Church Anniversary
6.00pm Advent Church Anniversary
Dec 14 11.00am Family Nativity Service
21 11.00am Advent Worship
6.00pm Carols & Nine Lessons
24 6.30pm Christmas Eve Lord's Supper
25 10.30am Christmas Day Worship

St Erth Methodist Church

- Dec 14 3.00pm Carol Concert and tea

Ventonleague Methodist Church

- Dec 14 6.00pm Worship
7.45pm Carol Concert

Angarrack Methodist Church

- Dec 14 6.00pm Carol Candlelight Service

Salvation Army

- 22 11.00am Praise and Worship
25 10.30am Praise and Worship

St. Joseph's R.C. Church

- 24 11.30pm Carol Service
12.00pm Midnight Mass
25 11.00am Mass

Happy Christmas to you all from the Pump Team

**A VERY MERRY CHRISTMAS
& A HAPPY NEW YEAR
FROM ALL THE**

**TRADERS
AT PRATT'S
MARKET**

Andrew
B.K. VIDEO
755277

Sue
NURSERY-
TIME
752233

Wayne, Gayna & Tim
HAYLE
ELECTRONICS
754244

Trish & Esta
MARKET PET
SHOP
752866

Bill at
BILL'S
PLAICE
0788 166
3453

Roger
BAIT SHOP
752866

Jeremy at
M.C.T.I.

Sally Shirley & Chris
BROTHER WOLF
ANIMAL RESCUE.

Colin & Mike at
COLIN'S MARKET
GARDEN

THE
PUMP
TEAM

Letters.....

Letter

To all the people who work to keep Hayle Pump going I wish you all a Merry Christmas and a Happy New Year. Many thanks for all your hard work. Love and best wishes to Lesley and all at Hayle Day Care Centre.

Inez Holyman nee Glanville

(Ed: Many thanks, Inez, from all the Pump team for your kind words.)

SUPASPLASH THANKS

You must all think I've forgotten as it seems so long ago (September 6th 2003) but I assure you I haven't. To you all who so generously

sponsored me on the Cancer Research Supasplash Swim last September my heartfelt thanks, you always come up tops.

The sum sponsored this year by you realised £1,067. Again many thanks, bless you all.

Yours very sincerely

Doreen Nicholas

Letter

To the skipper of the "Sally". We wish to pass on our thanks for your generous offer to take our daughter Sally and ourselves in your boat. We look forward to seeing her safely in and out of harbour when we return to Hayle next year.

Mrs J.K. Blunn, Sutton Coldfield, West Midlands

JENNIFER JACKSON

**QUALIFIED LEGAL
ADVISOR**

**SENSIBLY PRICED LEGAL ADVICE AND HELP
IN PLAIN ENGLISH**

**HOME VISITS DURING OFFICE HOURS AND AT
WEEKENDS**

**FRIENDLY AND CONFIDENTIAL
SERVICE COVERING A WIDE
RANGE OF LEGAL AND LAW
RELATED TOPICS**

**01736 751718
0778 682 1116**

**32 RIVERSIDE,
ANGARRACK
HAYLE TR27 5JD**

**Roy & Shirley
of
Roy Hayes
Glass
Wish all their
Customers a
Happy &
Peaceful
Christmas**



Rear of Central Garage
tel/fax 01736 754023
Mob. 07880 530795

Letter

Apologies for bringing the subject of dog fouling up again – but then, as long as it goes on, the comments have to continue. Don't get me wrong. As far as the Memorial Walk is concerned, it is better. I cannot say the same for the harbour which is **ABSOLUTELY DISGUSTING!** But there are still a few on the Memorial Walk who do not pick up. We mostly know who they are – they just have to be caught. (Minimum fine £50.) People of all ages enjoy walking the path, why should a 78 year old arthritic lady have to clean up after them? These completely irresponsible law breaking dog owners should be reported and spoken to, ei-

ther to the Hayle Council Office or to the Dog Warden on Penzance 350384, or c/o Penwith Council offices.

Presumably these owners clear up their own gardens or accidents in the house? It's up to everyone who enjoys walking to see that others enjoy it too.

A.. Foreman – Address supplied



Letter

May I, through the Hayle Pump, thank the man with the dog who found my black bag/knapsack at King George V Memorial Walk, the gardeners there who handed it over to the police, and the many people who were very sympathetic in my attempts to recover it. The bag contained money and other valuable possessions and I was very relieved to have it returned.

I have been visiting Hayle from Hertfordshire for over 30 years and have owned a chalet on the Towans for most of that time. I am very fond of the town and have always found the people very friendly and helpful. Finally, may I also take this opportunity to thank the gardeners for the beautiful displays of flowers throughout the town.

Jean McCartney (address supplied)



Letter

With reference to the letter in the Oct/Nov Hayle Pump from Chris Clyne. How the devil can she and

her family take 25 years to find the glorious Hayle beach. She says in her letter that she needed a local guide to find the beach, are you telling me that the locals didn't know how to get to the beach all these years, why oh why didn't she ask before, look what she's been missing. She also says there are no signposts, well there are many around, including one by the park on the main road, I take it she knows where the park is. My wife and I have been coming to Hayle for the past 40 years and find the Hayle population very friendly and helpful, and I don't for one minute think their reaction is 'blow the tourists' as she puts it, with the amount of holiday visitors we see on the beach on our visits three times a

year. I can only say I'm glad they walk around with their eyes open to read the signposts. Incidentally, congratulations to Hayle Town Band on finishing 7th in the national finals, and for a very good CD.

Gordon & Carole Hobbs, 13 Broadfield Ave, Kingswood, Bristol.

PENPOL SCHOOL CHRISTMAS FAIR

**Father Christmas* Daffle*
School Choir* Tombola* Face
Painting* Crafts* Games*
Refreshments* Competitions*
Bouncy Castle and lots more.....**
Come and join in the fun at Penpol School on Tuesday 2nd December from 6 – 8pm.

Hayle Bookshop & Gallery

26/ 28 Fore Street

Copperhouse

Tel: 01736 757009

Fax : 01736 756513

e-mail haylebookshop@btinternet

www.haylebookshop.co.uk



**Roy, Sue & Paul Endersby wish all their
Customers a very Merry Christmas and a
Happy New Year.**

***New Books* *Second-hand Books bought & Sold* *Cards*
Art Postcards *Book Tokens* *Prints & Original Watercolours*
*****Book Searches*******

"BEFORE OUR VERY EYES"

The first of a series of articles looking at some familiar and some not so familiar Hayle buildings

1. THE PASSMORE EDWARDS INSTITUTE

If you have lived in Cornwall any length of time it is hard not to have noticed the legend "Passmore Edwards" chiselled on the proud granite fronts of imposing Victorian buildings. Perhaps it was the Newlyn Art Gallery, Camborne Free Library, Falmouth Hospital or, of course, our own Hayle Institute. If your curiosity impelled you to tap the words "Passmore Edwards" into an Internet search engine you would have been astonished to register literally thousands of hits. Over seventy institutions from libraries to hospitals and

art galleries are linked to Passmore Edwards, many of them in London and the Home Counties and including such diverse establishments as the London School of Economics and the Whitechapel Picture Gallery. What links the Hayle Institute with these far flung buildings is the vision and extraordinary generosity of one remarkable man.

John Passmore Edwards was born the son of a carpenter in Blackwater, near Truro, in 1823. In an amazing rags-to-riches story this humble working class boy, who was largely self-taught, carved himself out a distinguished career as firstly a journalist and then as a seriously wealthy national newspaper proprietor. He entered Parliament, became the first Freeman of the City of Truro, twice refused a knighthood and has his

MURTS TELEVISION

SPECIAL RENTAL OFFERS!!

20" Television with Fastext



ONLY
£16.95
per month



& LongPlay Video with built-in VideoPlus+
3 months initial payment + 12 months minimum contract
written details on request

01736- 32 Penpol Terrace, Hayle -752269

portrait in the National Portrait Gallery. Before his death in 1911 Passmore Edwards, through his philanthropy, had probably done more for the educational and cultural life of ordinary working people than any other Victorian. Certainly Cornwall has never known similar generosity for he never forgot the county of his birth and the Hayle Institute, officially opened in 1886, was of special significance to its founder because it was dedicated to the memory of his father who had been a resident of the town at one point.

All of us in Hayle must be familiar with the handsome granite institute tactfully situated mid-way between Foundry and Copperhouse. Step inside its imposing doors and you could believe you were back in Victorian England. Dark oak panelling clads the walls and an elegant staircase gives access to a gallery with further panelled rooms leading off. You might believe you were in the Town Hall and indeed many people do believe that. There is a board outside the building proclaiming that this is the meeting place of Hayle Town Council and in a room up the grand staircase you will find the office of the Town Clerk. If your image of a Town Clerk is a crabbed elderly

ROADCRAFT SCHOOL OF MOTORING

Detailed and patient tuition
from

**CHRIS MILLER, D.T.p., A.D.I.,
M.I.A.M.**

*Learner, Pass Plus &
Advanced Tuition*

*Free Starter Packs

*Video Loan

*Theory Test Papers

*Pre-Test Checks

*Instruction for Nervous Drivers

*Night Driving Lessons

*Motorway Tuition

0800 0260293

01736 752800 (24hrs)

gentleman sitting on a high stool surrounded by dusty ledgers be prepared for a surprise. Eleanor Giggal, Hayle's Town Clerk since her appointment in September, must be one of the youngest and certainly most photogenic holders of such an office in the country! Eleanor talks about her responsibilities as Town Clerk with infectious enthusiasm. Not only does she prepare agendas,



W. J. WINN

FUNERAL & CREMATION DIRECTORS
PRIVATE CHAPELS OF REST
24 HOUR SERVICE

69, FORE STREET
HAYLE
01736 752124

&

TRENWITH TCE
ST. IVES
01736 793029





keep the minutes and administer the finances of the Council but she is happy to find herself as first point of contact for residents of Hayle with a

whole raft of civic or personal problems. If Eleanor cannot provide solutions herself in every case she will certainly be able to refer you to someone who can help. You can contact her at the Institute any weekday morning and she can arrange meetings downstairs for those who might find the stairs a problem.

However the Institute is not a place where only weighty matters of local government are transacted. It is also, as its founder intended, a place of learning, of good fellowship and relaxation. Drop in on a typical day and the sheer variety of activities being pursued in the various rooms of the Institute is quite mind-blowing. You might enjoy a coffee at



BIGGLESTONS

TRADING IN HAYLE FOR OVER 100 YEARS

**Please try us first for the best of Hardware,
Ironmongery, Kitchenware, Paraffin and Garden
Supplies.**

01736 752219

*Summer, Autumn, Winter, Spring
We can supply 'most everything*

PLEASE SUPPORT LOCAL TRADERS.

a fund-raising Coffee Morning or refresh your intellect at one of the Adult Education classes; then possibly a game of snooker in convivial company or if you are up to anything more energetic you could have a go at step aerobics or judo. A number of Hayle's clubs meet regularly at the Passmore Edwards including the Darby and Joan club, and the Hayle branch of the British Legion has had its headquarters in the Institute since the early 1930s. These organisations and activities, including Hayle Town Council, are all, you might say "tenants of Passmore Edwards" because a management committee administers the Institute in the tradition of its founder's intentions.

It seems in some parts of Cornwall Passmore Edwards Institutes are finding it hard to survive in the face of changing social and economic circumstances so how refreshing it is to discover that in Hayle the benevolence of a truly great man is still enriching the life of the community.

M. Jones

ANGARRACK VILLAGE HALLOWEEN PARTY

Over 60 children and adults dressed up to attend the Angarrack pumpkin party on Halloween night. The evening of children's games and feasting was organised by the Angarrack Village Association who had successfully applied for a Lottery grant to fund this community building activity. Days of room preparation by Mike, Pauline and Rachel Trewartha, John Humfrey and Gerald Peters created the right

**Roy & Mollie Angove wish
everyone a Merry Christmas
and a Happy New Year**

*

ANGOVE SPORTS
40 Fore Street
Copperhouse
Hayle 01736 752238
*For all sports equipment, clothing
& fishing tackle*

Rackets repaired & restring.



level of scariness in the chapel Sunday school rooms with additional effects supplied by David Halliburton. Prior to the games, there were prizes for the best carved pumpkin and best fancy dress. These competitions were judged by Cllrs. Shirley Oliver, Owen Philp and Colin Philp, who had an extremely difficult choice to make given the high standard of the entries. The catering was organised by Jackie Morgan with the help of Pam Andriessen and Sylvia Peters. The food was supplemented by McDonalds Happy Meals for the children who also received a complimentary Halloween lucky bag from the restaurant. 'I am absolutely delighted with how the village has come together to make this event such a success' said Helen Ri-



*Season's
Greetings*

From Alan Orchard

A.P. Orchard & Sons

Carpentry & Joinery

PVCu Fascias

Roofing

Building & Maintenance

01736 756687

(07787 148571)

27 Guildford Road

Hayle TR27 4PP

ley-Humfrey, Chair of the Association. The committee began preparations in June for this event. The children had a fantastic night playing games such as *horror pass the parcel* and *skeleton building*. All of the adults had entered into the 'spirit' of it by dressing up and helping on the night to make the games run successfully. Once our treasurer, Kathy Jewell, has made sure that we have accounted for every penny we will begin in earnest to plan for our next event which will be the summer outdoor games.

Helen Riley-Humfrey, Angarrack Village Association Chair.

Shakespeare walks into a pub and orders a beer. "I can't serve you," says the barman. "You're bard."

TEE TOTALLY HONEST!

*Oh! Why did I do it?
It's not as if it were thirst,
I quite believed I was going to stop
After I had the first.
But the first slipped down so nicely,
That when temptation beckoned,
Before I could say "No thank you"
I'd gone and accepted a second!*

*Then after I'd had the second,
I went and forgot the word
That starts with N and ends with O
So gratefully took the third.
And the third one was even better
Than the two which had come
before,
so I thought I'd extend the pleasure
and have just another one more.*

*And didn't the world look different,
I suddenly felt more alive
And whatever harm would it do me
If I went for one more and had five.
Number five disappeared just like
magic*

*Like a conjuror doing his tricks
And so, just to finish the evening,
I rounded it up to six.*

*Oh! Why did I do it?
What a stupid and wrong thing to do.
I went to bed and felt very ill,
And spent the night in the loo.
But it shows you that old men,
As long in the tooth as me,
Can still lose control when they're
tempted,
And over-indulge on the tea!*

Charles Crowle



SMUGGLERS



OUR RESTAURANT IS FULLY OPEN, ALL DAY, 7 DAYS A WEEK.
FEATURING OUR CORNISH HEAD CHEF ANDREW CLARK

COME AND TAKE FULL ADVANTAGE OF OUR SPECIAL WINTER MENU

BUY ONE MAIN COURSE AND GET ONE THE SAME, OR A

DIFFERENT CHOICE....FREE*

BETWEEN NOON AND 7.30PM
FROM THE SPECIALS BOARDS MONDAY TO SATURDAY



WE ENDEAVOUR TO USE LOCAL FRESH MEATS AND FRESH VEGETABLES

SPECIAL DIET? NO PROBLEM, JUST GIVE US A CALL!
LIMITED GLUTEN FREE AND VEGETARIAN SELECTION.

SUNDAY ROASTS STANDARD OR HUNGRY MAN!

YUMMY SELECTION OF DESSETS—BOOK IF YOU CAN!

CHRISTMAS FESTIVE MENU 1ST DEC TO 24TH DEC
FOR YOUR FRIENDS, FAMILY OR COMPANY

CALL IN FOR A COPY



WELCOME NEW YEAR IN WITH
RICHARD BENNETTS JAZZ BAND



REMEMBER SMUGGLERS?...IT'S BACK!

SMUGGLERS IS A FAMILY FRIENDLY FREE HOUSE

OPENING HOURS NOON TO LAST ORDER 9.30PM 7 DAYS

FIND US ON THE B3302 HAYLE TO HELSTON ROAD

SMUGGLERS, CALAIS ROAD, ST. ERTH-PRAZE, HAYLE. 01736 850280

*THE GREATER VALUE APPLIES—NORMAL PRICES RUN FROM 7.30 TO 9.30PM

Hayle Backpain Clinic

Do you suffer from?

Disc problems

Back pain

Sciatica

Whiplash

Sports injury

Headaches

Fed up with taking pain killers/anti-inflammatories?

Want to lead a normal life without pain?

Exhausted all routes?

Ring us on 01736 759088

Hayle Backpain Clinic
51 Fore Street, Hayle
(opposite Job Centre)

KERNOW PAIN CLINICS

The Other Half

John was a farm labourer who lived in a tied cottage with his wife Mary and their ten year old son William. John's father also lived with them and helped a lot with the farm work, tilling ground and producing good vegetables. They had an old border collie named Ben and Kitty the cat, who kept away the vermin.

There was a lot to do on the farm and John started work at daylight often not returning until dusk. William adored his Granda, who whittled a toy gun and a "whiz-about" that made a lovely humming sound when he ran against the wind. They caught rabbits and went fishing, the larder was never empty or the cottage cold. If they had a good catch Granda would sell some in the village, he always gave William some of the takings. Granda had been a soldier in the Boer War. William never tired of hearing the stories of the battles he had fought, the stories grew bigger each time he told them.



There were many jobs that William could do that earned him a few pence for himself. With the money he made at the farm and the money Granda gave him he was able to buy presents that Christmas for his fam-

LOSE WEIGHT FEEL GREAT AND KEEP IT OFF!

WANTED: People serious about achieving noticeable weight loss in the next 30 days.

- * Naturally derived products
- * Personally tailored programmes
- * Full customer follow up
- * 30 day money back guarantee
- * Eat your favourite foods

Call: Lucy

01209 832312

www.shedpoundsnow.co.uk
Independent Herbalife Distributor

ily. A pipe each for his dad and Granda and a thimble for his mother, which he knew she wanted.

William had new boots and stockings, a book about animals with pictures, an orange, apple, nuts and sweets. John bought Mary a beautiful blue wool shawl, she loved it. Granda made her a sewing box filled with cotton and sewing needles. Mary had knitted John a pullover to go over the cotton shirt she had made him. She knitted Granda a polo neck jumper and two pairs of thick woollen stockings to keep him warm.

They went to Church on Christmas morning, and returned home to enjoy their feast of goose, a present from the farmer and vegetables from Granda's garden. In the evening they roasted chestnuts on the fire,



Spit & Polish

Vehicle Valeting
Specialists.

Unit 10C
Central Garage Hayle.

*Ian and staff would like to
wish all their customers a
Merry Christmas & a
Happy New Year*

Phone 01736 753332

and drank home made herbal and ginger beer. Granda told more of his war stories, they sang carols and William was allowed to stay up late that night, he felt very grown up. They all smiled at each other and thanked God for their blessings before retiring to bed.

Christmas was soon over and William went back to school. As the seasons passed by, they were all happy and contented with their lives but Granda's age was catching up with him, he became disabled with arthritis and could not do so much work around the home and garden.

When William was fourteen he left school to work on the farm with his father. The following winter was the hardest time they had ever known. Hard frost made it impossible to work the ground. John and William

worked part-time mending fencing and repairing the barns. After Christmas there was no work for them. Mary had saved some money, which she had to use over the weeks that followed. It was spring before John went back to work on the farm, but there was no work for William.

In the autumn William went back on the farm for a few weeks to help with the harvest. After the harvest John and William were laid off, winter came early that year and their savings soon went. Mary did her best but often they were hungry. They tried to keep the fire going but wood was getting scarce as other families were collecting it and no-one could afford coal. Christmas was not as bountiful as it had been in the past.

One night when Granda and William were in bed, John and Mary discussed their situation. After much heart-rending thought they decided that the only option was for Granda to go in the workhouse. In the morning they told William of their decision. His father said "Go to the barn, son and bring that old blanket to wrap Granda in."

William came back with half of the blanket. "Why did you cut it in half?" asked John.

"I am saving the other half for you, Dad." He replied.

Granda never went to the workhouse.

Dorothy Cook

Santa Claus has the right idea. Visit people once a year. (Victor Borge)



Cornwall Animal Rescue

The National Animal Welfare Trust's Cornish Animal Rescue Centre is carrying on the work started by Molly Wyatt, who died in July 1996.

The Trust is committed to the long-term welfare of abandoned animals in Cornwall, and operates a strict non-destruction policy, which means that no healthy animal is ever put to sleep. It is based at leased kennels, with volunteers throughout Cornwall fundraising and home checking. The

Trust receives no state aid and relies on the generosity of the general public to maintain its work.

As the National Animal Welfare Trust never puts a healthy animal to sleep, this makes caring for elderly animals even more important. They are often overlooked by animal lovers looking to adopt a pet. Older dogs and cats have a lot to offer as they are already used to family life and demand little in return. Older dogs, for example, ask just to be loved, fed and talked to, needing much less exercise than a younger animal, happy to sleep the day away in a warm comfortable bed.

Older cats also come house and family trained, grateful for a safe haven to while away the days. They make ideal companions for the elderly.



David Moyse Clothing



*David & Lillian Polkinghorne and their staff
extend the Compliments of the Season
to all Hayle Pump readers*

*To make your Christmas shopping easier
we have a large selection of Seasonal Gifts
and clothing available*

YOU ARE WELCOME TO COME IN AND BROWSE
01736 - 752053

The Rescue Centre can always make use of your unwanted old sheets and duvets which can be utilised for animal bedding.

The Centre is open for animal homing from Tuesday to Sunday 1 – 4pm (closed Mondays)

National Animal Welfare Trust
Cornish Animal Rescue Centre
Wheal Alfred Road
HAYLE TR27 5JT
01736 756005

PLANTS ON THE TOWANS NO. 1 - SEA BUCKTHORN

Walking from the harbour on the coast path you pass through a tunnel made of Sea Buckthorn as you come up to the holiday chalets.

Sea Buckthorn or Sandthorn (*Hippophae Rhamnoides*) was introduced to this area about 30 years ago for its decorative features; it has since spread via its roots and berries and has two main colonies and several smaller ones. The main colonies are around the tunnel mentioned, which reaches all the way to the beach and the area north of the cricket club upon the bank.

Apart from doing a wonderful job at holding the sand banks together this deciduous shrub (up to 12 ft.) with its silver green leaves and bright orange berries has many medical uses. First records of its use go back over 1000 years and since its rediscovery recently it is now a commercial crop in Northern Italy.



SUITES & SOFAS CLEARANCE WAREHOUSE

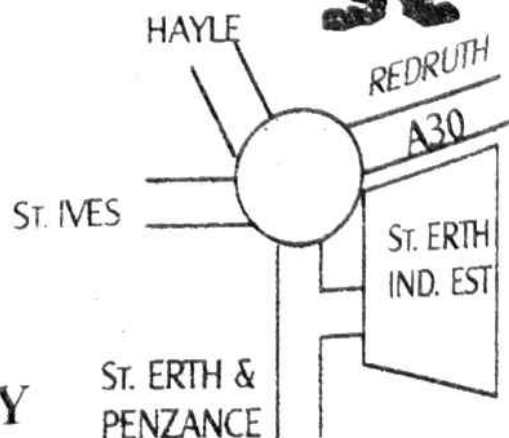
UNIT P, ST. ERTH INDUSTRIAL ESTATE, CANONSTOWN, HAYLE
*BANKRUPT STOCK, MAIL-ORDER RETURNS, FACTORY CLEARANCES,
END OF LINES ETC.*

SUITES, SOFAS, ARMCHAIRS & COMBINATIONS
AVAILABLE AT CLEARANCE PRICES

FOR DETAILS OF OUR CURRENT OFFERS
AND TO VIEW AT ANYTIME
PLEASE PHONE

07779 760686

**OR VISIT OUR WAREHOUSE
BETWEEN 11am – 4pm DAILY
WHEN WE'RE OPEN TO VIEW**



The juice and oil from the seeds and berries are rich in vitamins C and E and unsaturated fatty acids from the Omega series: 3,6,7, and 9. Omega 3 and 6 are known for their benefits to heart health, efficient brain function and for easing joint and skin conditions. Weleda make a range of treatments available at your local health shop.

Lovely to see such a useful and beautiful plant thriving in our community.

Michael Locke



WCCN GETTING IT TOGETHER

Always looking for that "hot story" the editor and I set off to the annual conference of the West Cornwall Community Network, held this year at the Tregenna Castle Hotel. It was chaired by Alex Olivier and supervised by the Director of Penwith Community Development Trust, Sue Guard. Dr Sandra Rothwell started proceedings.

Now the editor and I come from an age where quill pens and blotting paper were commonplace and the only acronyms we knew were MCC, BBC and MOT. You probably won't realise that you've been part of the LSP (Local Strategic Partnership) in this area for some time. Not for much longer! Dr Rothwell explained that we were now part of West Cornwall Together, renamed partly to make it

Quality resurfacing & repairs service

Repair Resurface Replace

Call us now for more information
Phone 01736 756077
 92 Commercial Road
 Hayle, Cornwall
 TR27 4DJ

Cspray
 Baths and Kitchens

INSURANCE WORK UNDERTAKEN

Season's Greetings to all Pump readers. As you can see we have yet again had another name change, for reasons beyond our control. We feel that this new name states more clearly what we are about, either repair if possible, if not then resurface, and if neither of these are suitable, replace.

more customer friendly.

Eight representatives had to be elected to WCT to serve as links with various areas of community life. This was supervised by the lovely Gina Aylward,, Community Fund Empowerment Coordinator and the candidates were duly elected.

There followed a ten minute ice breaker, a somewhat Pavlovian exercise which seemed to involve standing up and sitting down with ever increasing rapidity. Three slipped discs and four back spasms later we then heard from Bernice Williams, the Community Business Broker. At this point most of the delegates showed a lot more interest in proceedings as we heard how she is able to support new and existing busi-

SPAR



HAYLE. OPEN

6.30am-10pm,

SEVEN DAYS

A WEEK

Telephone us on [01736] 753327

FOOD TO GO

NATIONAL LOTTERY



FRESH BAKED BREAD

SPIT ROAST CHICKENS



WE ACCEPT CREDIT CARDS AND GIVE CASHBACK

nesses in the area.

The ravages of modern technology meant that Siobhan Osborne wasn't able to demonstrate the organisation's website on the internet, so we reluctantly filed off for lunch.

Re-convening at about 2 o'clock after an excellent lunch (well done Tregenna Castle) we were entertained by a dance troupe of young ladies from St Just called "Capers", who had benefited from a grant to help them buy specialist shoes and equipment. Siobhan was then able to show us the range and potential of the website, which had been particularly successful in just a short space of time.

The rest of the proceedings involved various groups explaining that funding was available for a whole range of activities and that, provided applicants met certain criteria, they could well be successful. Many groups seem reluctant to apply but we can tell you from the Pump's own experience that it's not as daunting as it might seem.

Rather like Klingon-speaking Star Trek conventions, these events have a language of their own to which all the speakers seem to subscribe; the editor and I set off for home dreaming of "flagging up" some ideas and doing a bit of "signposting" and resolving to get to grips with this new fangled jargon before next year.

**Roger Winterburn, Secretary,
Hayle Pump**



BARTON print

for all your printing requirements

- 07799 411525 -

**General Printing
Letterheads
Business Cards
Compliment Slips
NCR Pads & Sets
Flyers & Leaflets**

1 Turnpike Road, Connor Downs
Hayle, TR27 5DT



Cornish Cinema in Hayle

We went to a screening at the Day Care Centre of 3 shorts and one feature film all about Cornwall.

They were "Breaking the Chains" by Nick Darke, "Naw Kans Baner" by Paul Farmer, "Ramble" by Denzil Monk and "Golden Burn" by Mark Jenkin. The films were made by people who love their native land and it showed, they were proud and angry and passionate at the same time. The evening was entertaining and informative and it was a pity that more people did not support Denzil Monk's initiative. You all missed a treat.

Jeff & Sarah Turk

All Aerials

TV/FM Aerials & Satellite Specialists

•

Freeview & Sky Digital

•

Channel 5 Reception Problems & Tuning

•

Satellite Systems Installed and Maintained

•

Video/Satellite Playback Systems

•

Multi-point Systems - Domestic & Commercial

•

Members of the Confederation of Aerial Industries

•

Free Local Estimates

**All Work Guaranteed • Fully Insured • Competitive Prices
Prompt Reliable Service**

For Free Friendly Advice Call

01736 759225

Mobile: 0797 9503907

Email : info@allaerials.co.uk

Visit our web site: www.allaerials.co.uk

Hayle Volunteer Bureau

Once again we have been very busy in Hayle with new volunteers coming on board and several new organisations requesting help.

Maybe you can help with one of these:

Currently we have a few groups who are looking for people to work from home manning after hours phone lines. No experience is necessary as full training is given. The only requirement is that you have a BT telephone.

Family Care is a service that provides support to families of children with specific needs, giving the carers the opportunity to take a break. Volunteers are matched with a family

who need help either once a week or on an occasional basis to sit with their children while the parents have a break. Full training is given.

Harbour Lights Arts Project aims to help people of all ages to discover and explore individual creative expression within group activities. Volunteers are needed to assist with the groups. The project is based in St Elwyn's Church Hall.

These are only a few of the many opportunities we have so if you have some spare time on your hands and would like to know more please contact me or pop into the office,

Becca Shearing

Hayle Volunteer Bureau

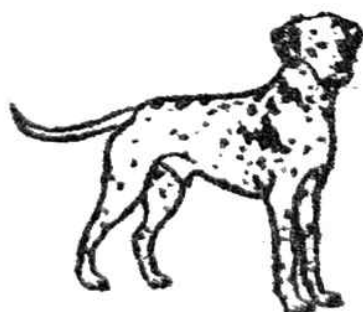
Foundry House, Hayle

01736 7578364

penwithvb@freenet.co.uk



MERRY CHRISTMAS



To all our customers from
everyone at Dylan's Café .

6 - 7 Foundry Square, Hayle

01736 754809

Mrs Terry Lello
COUNTY COUNCILLOR



*If you need any assistance
with matters relating to County
District or Town Council
I would be pleased to help
and can be contacted at:-*

telephone
01736 - 757507
or
e-mail
tlello@cornwall.gov.uk

The Angarrack Smelting House Hayle and Its History

Continued from last issue...

From the early years of its establishment, the Angarrack Smelting House was equipped with six reverberatory furnaces. It had this number in 1760 and probably for many years afterwards. These furnaces were 18ft long 12ft across and 10ft high, and could be charged with 5cwt of tin concentrate. Larger furnaces were built, and those operating at the Chyandour Smelting Works at Penzance in 1883 were of a size sufficient to take a charge of

culm. The furnace was then fired with ordinary coal and the mixture of black tin and culm was heated to a molten state.

After the slag which rises to the surface during smelting had been skimmed off, the metal remaining was now known as white tin. It was drained off into an iron busa holding $\frac{3}{4}$ cwt. The metal was further refined by "kettling".

In this process the blocks of tin were re-smelted, and the tin allowed to run off into an iron receptacle called a kettle. During this operation it was frequently stirred and tossed by a ladleful at a time, held arm high, letting it fall in a stream into the molten metal. Apple wood was thrown into the kettle to aerate and bring the dross to the surface to be skimmed off. The metal cooled in the kettle in layers of diminishing purity from the surface, the top layer being classed as refined tin, the second as common or black tin, and at the bottom was a shallow layer of impure tin which was re-melted.

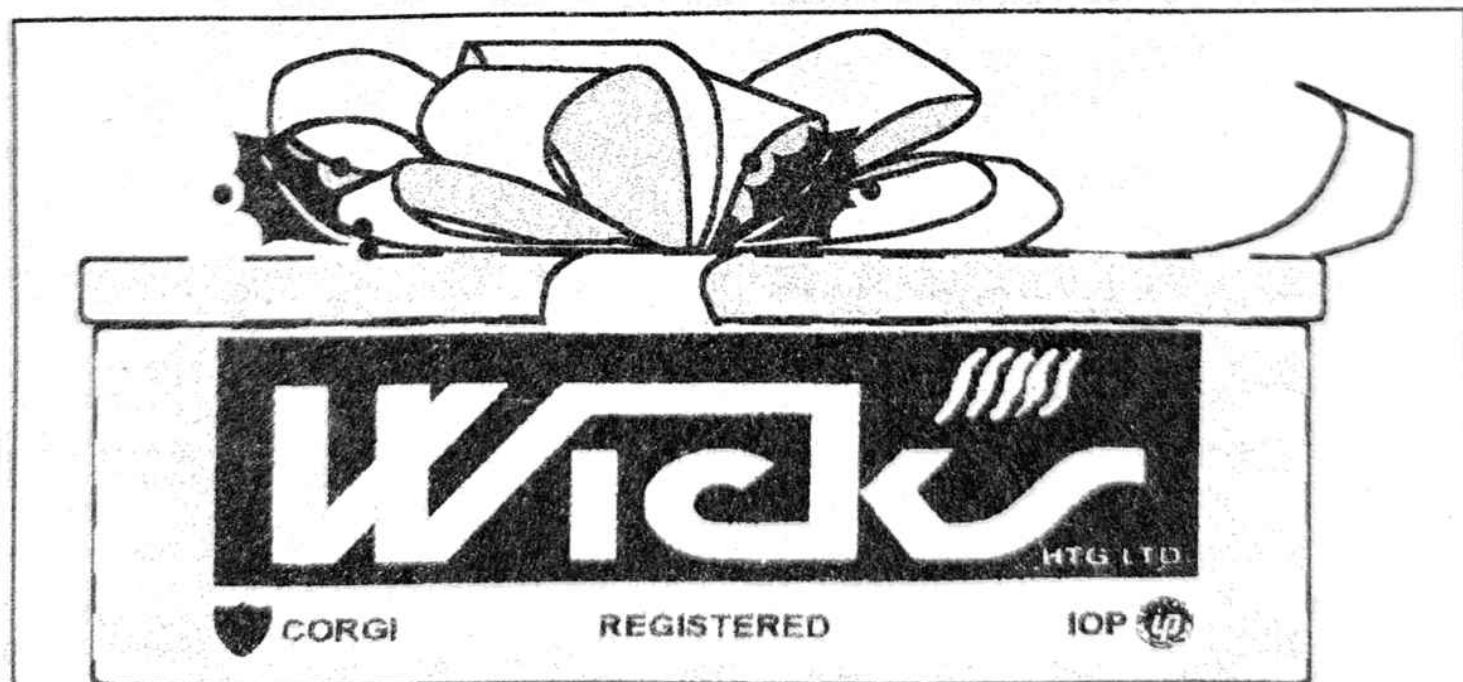
While the contents were still in a molten state, the refined tin was ladled into separate moulds, being cast into bars or ingots weighing $\frac{1}{4}$ cwt., 1 cwt and into large blocks weighing 3 cwt. These were stamped with a lamb, lion, plume of feathers etc. to identify the smelter's house. (Many a Cornish pub adopted the name of the nearest smelters. Possibly because of their patronage!) These bars or ingots were stacked

28cwt.

The process of smelting tin ore in a reverberatory furnace was simple in principle, though arduous in practice, mainly because of the intense heat generated. A quantity of tin concentrate, (which was the residue of the mined ore after it had been dressed and crushed in the stamps to remove as much foreign matter as possible, it was then known as black tin) was placed in the furnace, mixed with anthracite or culm as it was known. The charge for one of these furnaces was from 5 to 6 cwt of black tin, well mixed with a tenth or twelfth its weight in and stored in readiness for coining at the next coinage.

As can be imagined, kettling was very hot and exhausting work, for which the smelters received extra payments. Some relief from this labour came in consuming large quantities of beer, between shifts.

By the early nineteenth century Methodism had taken a strong hold in Cornwall and every town had its leaders. In Hayle, one of the most prominent of these was Francis Harvey. He was born in Hayle in 1792 and was closely involved in the affairs of Angarrack. It was he who gave the land, and built the first chapel in Angarrack in 1834. He headed the list of trustees of Copperhouse Chapel in 1816, and conducted many services there, also



*Jim & Cynthia Wicks wish everyone
a Merry Christmas*

PLUMBING, CENTRAL HEATING & BATHROOM SPECIALISTS

01736 - 753277



**O'DELL
SIGNS**

OF ALL TYPES
Signwriting, Perspex
Plastic, Engraved,
Magnetic, Posters,
Illuminated signs,
COMPUTER CUT
VINYL LETTERING
for Vehicles & Signs

Embroidery
for
Businesses & Clubs

COLOUR COPYING
HAYLE 01736 753656
1, Turnpike Road, Connor Downs.

he conducted the Sunday School attached to it very successfully.

In the eighteenth century excessive drinking of beer and spirits and its consequences became a national disgrace. Towards the end of that century and in the early years of the next, some attempts were made to control the sale of alcohol, by enforcing the law as it stood. However, in the years that followed, the situation became worse rather than better, and Temperance Societies were formed in an attempt to curb the evils of "Strong Drink".

To be continued next issue.
Researched by Charles L. Crowle
A.M.I.Mech.E. F.I.Diag E.

HAYLE PUMP SUBSCRIPTION SERVICE

For those readers who would like a Pump sent to family or friends elsewhere in the UK, or local people unable to get into Hayle to collect a copy, we operate a postal subscription service. Simply send us the delivery name and address **CLEARLY PRINTED**, together with £2.20 to cover the cost of stamps and envelopes, and we will send a year's issues (6 copies) of the Pump as soon as it is published. (UK addresses only – please make cheques/postal orders payable to "Hayle Pump Newsletter".)



I WON HIM. HE WAS THE
BAD JOKE IN A XMAS
CRACKER.

This newsletter has been assisted
by a grant from the
Neighbourhood Renewal Unit.



All Aerials...46
 Angarrack Inn...19*
 Angove Sports...35*
 Barton Print...45
 Biggleston's...34 *
 Brookvale...14
 Cranford House B & B...6
 C Spray...43
 Digitech Services...5
 D J Stylz...3
 Dylan's Café...47 *
 D.W. Hire...15
 Farm Shop...17*
 Fernleigh B & B...12
 Fitness Classes...18
 Footsteps...19 *
 Foundry Bar...52*

INDEX OF ADVERTISERS

Furniture W'house...42
 Hayes, Roy...30
 Hayle Backpain Clinic...38
 Hayle Holistic Clinic...51*
 Hayle Bookshop...31 *
 Hayle Healthfoods...10 *
 Hayle Joinery...11
 Hello Gorgeous...3
 J. Jackson...29
 J C Electrical...8
 Jolly Bodger...4 *
 Keast, H.L...22 *
 Lello, Terry...48
 Moyse, David...41 *
 Murt's T.V...32*

O'Dells...50
 Orchard, A.P...36
 Penpol Garage...20
 Philp's Pasties...16
 Roadcraft...33
 Singer Sewing Centre...23
 Slowfitt & Auto...13
 Smithy's Hire...9
 Smuggler's...37
 Spar Shop...44*
 Spit & Polish...40
 Trevassack Nurseries...21 *
 Wade, Neil...24
 Weight Loss...39
 Wick's Heating...49
 Winn, W.J...33

*You can pick up a copy of the Pump at those advertisers marked with a * also at Hayle Library, Day Care Centre, Community Centre, Bodriggy Health Centre, Copperhouse P.O., Forbuoys, St. Erth P.O., Connor Downs P.O., and many other place in Hayle.*



Hayle Holistic Beauty Clinic

Rama Viswanathan

(Award winning therapist)

Having completed a very successful year since opening, we would like to thank all our clients for their loyal support and wish everyone a Merry Christmas and Happy New Year.

All beauty treatments by award winning therapist.
 Specialised cosmetic treatments.
 Collagen, Botox Injections, Thread Vein treatments.
 Gift Vouchers . Free Consultation.
 Special rates for Senior Citizens & School Children.

Note: The Salon will be closed for Christmas from 12/12/03 to 18/01/04. Normal hours resume from 19/01/04

The Foundry Cafe Bar

Street food from around the world

Christmas Party Nights
Booking Essential for Our Famous

Christmas Dinners Dec. 3-20th

Greek Night
Dec. 11th Food & Music

Xmas Quiz Night
Wed 17th Dec.

Bombay Nights
Incredible New Years Eve Party
Food, Fancy Dress

Tickets On Sale Now!

**Reserve Your Party
Table Today**

The Foundry Bar Café, Foundry Square, Hayle (*behind the White Hart Hotel*)
Email: the.foundrybar@hotmail.com

01736 753334 www.the.foundrybar.com