

Issue No. **56**

FEB/MAR

2004

Circulation 2,500



FREE Copy – please take one (made possible thanks to our advertisers)



Apollo 11 launch youth project in Hayle. Taite Sheldon-Moralee in action. See page 14

Hayle Pump Newsletter
Unit 14, Pratt's Market, Chapel Terrace
Hayle TR27 4AB
email: haylepump@theturks.fsnet.co.uk

**Closing date for
next issue :
20th March 2004**

Advertising Rates

Full page (130 x 190mm) £35.00
Half page (130 x 95mm) £20.00
Quarter page (63 x 95mm) £11.00
Eighth page (63 x 42mm) £6.00

If you wish to advertise please contact Sarah Turk at the address below.

Editorial Team Members

Tim Appleton

N.A. Bodilly

Goudie Charles (Editor)
01736 757351

Mel Jones
78 Hayle Terrace
Hayle TR27 4BT
01736 757560

Jeremy Joslin, Bajjer Arts
10 Foundry Hill
Hayle TR27 4HW
01736 756756

Jeff & Sarah Turk
35 Penpol Terrace
Hayle TR27 4BQ
01736 752319

Roger Winterburn (Secretary)
01736 756393

You can leave your news, letters, notices etc. at our unit in the market, or with any of the team. You can also use any of our drop-off points:

At Foundry

Biggleston's Hardware
Colin's Market Garden
Hayle Electronics

At Copperhouse:

Jolly Bodger
David Moyses Clothing

The Hayle Pump would like to remind readers that items, or articles and Public Notices are accepted as points of view and are not necessarily the opinion of the Newsletter Team. Correspondents are reminded that all material submitted must be signed with your name and address, and if possible, telephone number for validation. This will not be printed if you don't wish it to be. We reserve the right to refuse or edit items sent to us.



DAFFODIL CAMPAIGN 2004

I am currently making preparations for our single biggest national promotion, The Daffodil Campaign. Volunteers take to the streets and hold collections in supermarkets during February and March offering our unique daffodil buttonhole in exchange for a donation to our cause.

I would like to ask your readers if they would consider sparing an hour or two to help Marie Curie raise vital funds to support our local Marie Curie Nursing Service

Last year the campaign raised £30,000 here in Cornwall and with more help we can raise more funds thereby enabling the Marie Curie nurses to provide more nursing care to cancer patients in our county. To get involved today please call 01872 260500. **Lynda Thomas**
Community Fundraising Manager

Have you heard the one about the gypsy who won the Lottery? They paid him in traveller's cheques.

GRASS CUT
HEDGES TRIMMED
GARDEN RUBBISH
CLEARED
Please phone Maurice
01736 754460



KIND OF
CORNISH



Mrs Rosewarne, the Cornish raconteur, was during her lifetime hugely popular, with her regular appearances on Radio Cornwall, as well as live performances throughout the region. A CD of her work, "The Best of Mrs Rosewarne" has now been released; as the CD

Des
Button
ELECTRICAL
SERVICES &
SUPPLIES
01736 - 753211
SPRINGFIELD
33 CLIFTON TERRACE
HAYLE TR27 4BP

JOLLY BODGER WAREHOUSE

**77 FORE ST
HAYLE
01736 752091**



**WE STOCK:
BLACKFRIARS
PAINTS &
PRODUCTS.
FLO GAS
CAMPING GAZ..
HARDWARE,**

**GIFTS & SOUVENIRS
AND MUCH MUCH MORE!
*HOUSE & CAR KEYS CUT***

sleeve says, she stood for good clean Cornish values and humour, and her stories were engagingly told in the local vernacular. Those legions of her admirers to whom this gentle, homespun humour appealed will without a doubt need little in the way of recommendation to buy this excellent example of the work of a unique and much-missed local performer. (59 mins, £13.50.)

Very different, but nevertheless equally effective examples of local talent can be found on the second CD "Songs from the Hill – Volume 2", which is a compilation of various young local artists and bands recorded by Top of the Hill Recordings of Canonstown. The sleeve describes the music as 'The sound of Cornwall – acoustic, eclectic and electric'. It is mainly in the Celtic and

folk music genres, but nevertheless the styles of the various artists are sufficiently original to make the album a most interesting selection and illustration of some of the musical skills on the Penwith scene. Personally, I was particularly taken with "Rodeo Clowns" and "See Things Blind" by The Money Shot", also Gezebell's "Once Upon A Time", and Euston Jones's bluesy "North Wind", but given the high standard of this CD, any of the tracks are likely to appeal, depending on one's own individual taste, and fans of this type of music certainly won't be disappointed. (54 mins, £12.50.)

**Both CDs can be obtained from:-
West Penwith Music
Union Street
Penzance (Tel. 01736 364440)
Goudie Charles**

SMILE

Smiling is infectious
You catch it like the flu
When someone smiled at me today
I started smiling too
I passed around the corner
And someone saw my grin
When he smiled I realised
I'd passed it on to him
I thought about that smile
Then realised its worth
A single smile just like mine
Could travel round the earth
So if you feel a smile begin
Don't leave it undetected
Let's start an epidemic quick
And get the world infected.

Sent in by I.Holyman

Hayle Decorative Lighting

News

The Decorative Lighting Committee together with Hayle & District Chamber of Commerce held a social evening and prize giving on December 16th at Hayle Day Care Centre. Maggie Hampson did a fine job with the catering, and we all had a very enjoyable time,

The best lit-up house award went to Mrs Wells, 5 Forth an Streth, Phillack, the runner up was Maureen Bennetts, 12 Copper Terrace.

The best bungalow was won by Mr & Mrs Birks, 7 Gwarth an Dre, Phillack, the runner up was Ros Moore, 36 Mellanear Road.

The best window was won by Lyn & Mike Reffold, 26 Commercial Road, runner up Mrs J. Cook, 14 St Johns

Street. There were 4 highly commended (house) Paul Taylor, 4 Tolview Terrace, Mr & Mrs Noall, 9 Bodriggy Court, Tracy Watkins, 14 Penmare Terrace & window Jackie Penberthy, Commercial Road. Two special prizes were made to Oliver & Dominique Angove for outstanding effort, they raised over £400 in sponsorship money on our cycle ride.

Hayle & District Chamber of Commerce awards went to: shop window, 1st Flowertime Florists, 2nd Hampsons of Hayle at Copperhouse, 3rd Loggans Fish Bar, highly commended John Lloyd, St Johns Street. Business premises: Jewsons, highly commended Tempests.

Public house: The White Hart and for all year round best window display the award went to Biggleston's Hardware.

digitech Services

Personal Computer Services

New Service – Photograph Restoration (see website)

- PC systems built to order
- PC repairs & upgrades
- Home & Small business networks
- Software installation & setup
- PC maintenance
- Internet installation & setup
- ADSL Broadband installation (subject to availability)
- Peripherals supplied & installed

Competitive pricing structure - Free quotations
Work carried out at your premises
(where possible)

URL www.digitech-services.co.uk

E-Mail service@digitech-services.co.uk

Telephone – 01736 757267 Mobile – 07976 715141

Sewing Service

for the shortening of

SKIRTS, DRESSES, TROUSERS, JEANS.

SIMPLE ALTERATIONS TO CURTAINS

AND CLOTHES - CURTAINS MADE WITH

CUSTOMERS OWN MATERIAL TO

60" LENGTH

REASONABLE CHARGES

Guildford Road area, Hayle

TELEPHONE: 753281

are always surprised by the generosity of Hayle people, especially when we empty the collecting tins.

R. Horwell, Chairman 01736 752597

It's alright to hold a conversation, but you should let go of it now and again.

So after all the hard work putting up the lights, we now have to take them down and store them until next Christmas, but I would just like to say a big "Thank You" to all the people of Hayle who joined in and put up so many lovely decorations, I can truthfully say that it was our best combined effort so far. And a big "Thank You" as well to everyone who has helped us in any way whatsoever, we

HELLO HAYLE

Aaron and Sallie of "Hello Gorgeous" would like to wish all customers a Happy New Year. Our boutique got off to a great start thanks to all the local support. New stock will be arriving beginning of February including "Lipsy" so come along, there is something for everyone 18 - 40.

Tel : (01736) 759664

71a Fore street
Hayle,
TR27 4DX

hello
gorgeous
Funky Fashion for Girls and Gurls

Stockists of Bench, Chilli Pepper, Pussycat, Starfish, Gorgeous Couture, Lipsy and Lowlife

New **Bench**. Stock arriving in February

gorgeous



KRIS GAYLE SINGS AGAIN!

Following her recent successful comeback, Hayle's own jazz vocalist Kris Gayle will be doing two gigs in February. On Thursday 12th, she appears at the Tregenna Castle Hotel as one of many acts and bands taking part in the annual jazz charity ball in aid of the Macmillan nurses. On Tuesday 24th February, Kris appears as the star attraction at St Ives Jazz Club, at the Isobar. On both occasions she will be accompanied by the extremely talented Hayle-born brothers Viv and Terry Rodd (piano and drums), and to complete the Hayle connection, the double bass will be played by Pump editor Goudie Charles. (See local press for further details.)

R	ROY
H	HAYES
G	GLASS
Rear of Central Garage Hayle	
Tel/fax: 01736 754023	
Mobile: 07880 530795	
Open Mon -Fri 9-12 1.30-4.30	
Sat 9-12	

THE VIEW FROM THE STEEPLE

Hello again, folks! When I left you all last time we were just beginning Advent and the build-up to Christmas, starting with the children's Christingle service, which, as always, got everyone into a happy mood for the festive season.

The Carnival and the Christmas lights put a sparkle into the proceedings and even encouraged me to make a few night flights around my patch just to see who else had lit up their houses and gardens since my last visit. St Elwyn's looked beautiful as well, with twinkling fairy lights blending with the soft, flickering candlelight at the Midnight Communion service on Christmas Eve.

Earlier in the evening the children had performed their nativity play during the crib service, and on Christmas Day they joined in with Reverend Carol's story about the 'grumpy shepherd', but after that Christmas seemed somehow to fall a bit flat.

Maybe it was because the actual Christmas holiday was only 24 hours long. On Boxing Day, instead of being able to recover from the over-indulgence of the previous day, the shops reopened and the post-Christmas sales got into full swing.

New Year's Eve wasn't much of a "pick-me-up" either. I sat in my bel-fry as the rain lashed down. The braver revelers splashed past dressed in a variety of costumes determined to celebrate the start of 2004 with dou-

ble pneumonia. At least the fireworks weren't washed out which ended 2003 on a more cheery note. Now another new year has begun, full of promises which we hope will be fulfilled. Only time will tell, of course; so watch this space!

Since I began to write this piece I have heard of the sad death of Nicholas Bell, who played Joseph in our nativity play and I would like to dedicate it to a very brave young man.

See you all some more!

The Sanctuary Sparrow

What did the scoutmaster say when he heard his broken whistle had been mended?

Beep repaired



J C ELECTRICAL



Your complete 24hr Electrical Service

City & Guilds Qualified
Tests to 16th Edition BS7671

Rewires, New Build, Lighting, Extra Sockets,
Showers, Heating

Prompt Reliable Service
All Work Guaranteed

Free Estimates

Hayle 01736 754543
Mobile 07739 577 549



NEW GARAGE IN HAYLE

Hello Hayle again!....please let us introduce our garage to you: **SLOWFITT and THE AUTO CENTRE**, positioned for easy access on the B3302.

A few facts about us: we are a family run garage with family values, where courtesy and good service are paramount. We have established a very successful business in Helston and have been trading for over 20 years and in that time we have built a reliable skilled workforce dedicated to repairing customers' cars and vans to a very high standard.

This high standard has enabled us to become the largest rescue and recovery contractor in West Cornwall for the RAC and the AA offering a dedicated service to many motoring organisations as well as serving private customers via our 24 hour service. You have probably seen the green and yellow trucks and vans driving around Hayle – this is now Hayle's professional towing company and in your hour of need, will aim to assist and resolve your problems.

We are also Bosch Automotive Service Agents, giving us the skills to handle petrol and diesel fuel injection systems, tackling diagnostic procedures unique to the modern motor vehicles.

We can offer general garage facilities, but also a lot more:-

- General servicing and repairs
- MOT testing
- Tyres

- Batteries
- Exhausts
- Brakes
- Starter motors & alternators
- Shock absorbers
- Clutches
- Air conditioning
- Bosch diagnostics/correction
- Engine rebuilding, head reconditioning, general machining etc.
- Rescue and recovery
- Helpful advice

We are proud to be accredited with the ISO 9001/2000 quality assurance standard and to be awarded the full scope certification for the whole of the garage operation. All works are signed off and checked for quality and value, this, we trust, ensures our customers' complete satisfaction.

We are conscious of the fact that when we have your car in our care we have your life in our hands and we take that very seriously indeed.

As a special introductory offer why not take advantage of our FULL WINTER SAFETY CHECK - completely FREE OF CHARGE!! – to date 31 of you took advantage of this – THANK YOU!

TELEPHONE: 01736 757777 – speak to Phil, Nick or Ian, stating "The Hayle Pump".

We wish you all a HAPPY NEW YEAR and we will do our little bit for you! We look forward to being of service to you in the near future.

TIP: With the flash rain storms and many leaves still blocking drains, leaving large puddles on the roads – please slow down – **SAVE YOUR ENGINE AND YOUR WALLET!**

advertisent feature

natural food and most of all the ability of our bodies to absorb those elements.

Even the most natural food we can obtain may not be as full of nutrients as those of our ancestors due to pollution and depletion of the soil therefore it is necessary for us to supplement our food with added vitamins and minerals to obtain the diversity that our bodies have evolved to require. Likewise our bodies evolved to heal through the use of natural materials such as herbs, so it is really no wonder that these substances work so efficaciously, although it is always a joy and privilege when someone returns to the shop looking glowing and fit to tell me how well something has worked for them.

As awareness of complementary health products spreads wider and wider the question of 'placebo effect' is often raised. Personally I feel you couldn't put a cat's whisker between the 'mind' and the 'body' and that the deliberate act of choosing something which you consider will benefit your health and making an investment therein is a significant step towards healing. But from the point of view that you might as well be taking an inert substance I think animals are very good at showing us the way. Throughout my time at the shop pet owners have reported brilliant results from using flower essences and homeopathic remedies for their creatures so I am delighted that Bioforce have now produced a range of essences especially designed for animals. I await feedback with great interest....

Wishing all my customers, present

HAYLE JOINERY



FOR ALL OF YOUR JOINERY
REQUIREMENTS IN SOFTWOOD OR
HARDWOOD.

DOORS , WINDOWS , CABINETS ,
BOOK CASES , STAIRS.

TEL/FAX 01736 751715
MOB 0779 950 3303

and future, health and happiness in
2004. With love and light.

Felicity – Hayle Healthfoods

Environment & Heritage Service.

**The Service has been awarded
£103,000 through English Nature's
Wildspace! Grant scheme on be-
half of a local partnership.**

The Lottery grant will be used to help partners declare and manage a network of Local Nature Reserves (LNRs) at Gwithian and Upton Towns, Gwithian Green, the Red River Valley and Gwithian Sands. The project will contribute funds towards the purchase of the Gwithian Sandpit as well as employ a Community Liaison Officer for three years.

natural food and most of all the ability of our bodies to absorb those elements.

Even the most natural food we can obtain may not be as full of nutrients as those of our ancestors due to pollution and depletion of the soil therefore it is necessary for us to supplement our food with added vitamins and minerals to obtain the diversity that our bodies have evolved to require. Likewise our bodies evolved to heal through the use of natural materials such as herbs, so it is really no wonder that these substances work so efficaciously, although it is always a joy and privilege when someone returns to the shop looking glowing and fit to tell me how well something has worked for them.

As awareness of complementary health products spreads wider and wider the question of 'placebo effect' is often raised. Personally I feel you couldn't put a cat's whisker between the 'mind' and the 'body' and that the deliberate act of choosing something which you consider will benefit your health and making an investment therein is a significant step towards healing. But from the point of view that you might as well be taking an inert substance I think animals are very good at showing us the way. Throughout my time at the shop pet owners have reported brilliant results from using flower essences and homeopathic remedies for their creatures so I am delighted that Bioforce have now produced a range of essences especially designed for animals. I await feedback with great interest....

Wishing all my customers, present

HAYLE JOINERY



FOR ALL OF YOUR JOINERY
REQUIREMENTS IN SOFTWOOD OR
HARDWOOD.

DOORS , WINDOWS , CABINETS ,
BOOK CASES , STAIRS.

TEL/FAX 01736 751715
MOB 0779 950 3303

and future, health and happiness in
2004. With love and light.

Felicity – Hayle Healthfoods

Environment & Heritage Service.

**The Service has been awarded
£103,000 through English Nature's
Wildspace! Grant scheme on be-
half of a local partnership.**

The Lottery grant will be used to help partners declare and manage a network of Local Nature Reserves (LNRs) at Gwithian and Upton Towns, Gwithian Green, the Red River Valley and Gwithian Sands. The project will contribute funds towards the purchase of the Gwithian Sandpit as well as employ a Community Liaison Officer for three years.

Plants on the Towans No.2 - Evening Primrose

This plant grows on all the Towans but is at its most magnificent in the sand around the Hayle Estuary. In this location Evening Primrose (*Oenothera Biennis*) grows up to 4 feet tall with amazing deep lemon yellow flowers 3" across.

In traditional Chinese Five Element cosmology Evening Primrose is charged with female earth energy and scientific studies of the fatty acids extracted from the seeds (especially GLA) support this claim.

In 1981 at St. Thomas' Hospital, London 65 women with PMS were treated with oil of Evening Primrose. Of these 61% experienced complete relief, to 23% partial relief. Other problems helped by this plant are ec-

zema, M.S. and liver damaged by alcohol.

Perhaps the most remarkable study was completed at Glasgow Royal Infirmary in 1987 using the oil to treat patients with rheumatoid arthritis. 60% were able to stop taking their normal drugs, and those taking fish oil as well fared even better. The scientific explanation is that GLA is a precursor of a hormone-like substance called PGE1 which has a wide range of benefits to the body.

Evening Primrose began flowering last year at the end of June and at the time of writing (2nd week in January) is still flowering in sheltered spots. A wonderful sight I saw in December was a charm of goldfinches hanging on and feeding from the seed pods.

Michael Locke

NEW RANGE OF ECOMATIC SPECTACLES

LIGHT REACTIVE LENSES
RANGE OF STYLISH FRAMES

SINGLE VISION FROM £85.00 COMPLETE
VARIFOCALS FROM £99.00 COMPLETE

F.L. KEAST F.B.D.O.

DISPENSING OPTICIANS

18 COMMERCIAL ROAD HAYLE TEL. 753145

&

21 ALVERTON STREET PENZANCE TEL. 366106

SMITHY'S

TOOL HIRE & SALES

HIRE TOOLS FOR TRADE & DIY

UNIT N ST. EARTH INDUSTRIAL ESTATE

(THE OLD CREAMERY, A30 HAYLE - PENZANCE ROUNDABOUT)

**YOUR LOCAL INDEPENDENT TOOL HIRE SHOP
OFFERING YOU THE BEST IN HIRE RATES, BACKED UP
BY A SERVICE - SECOND TO NONE.**

- * Mini-Digger
- * Mixers
- * Compactors
- * Trestles
- * Shredders
- * Power Barrow
- * Breakers
- * Stihl Saws
- * Acrow Props
- * Alloy Towers
- * Roof Ladders
- * Floor Sanders
- * Work Top Jigs
- * Petrol Strimmers /
Hedgetrimmers
- * Rotavators
- * Carpet Cleaners
- * Pressure Washers
- * Steam Wallpaper
Strippers
- * Block Splitters

AND LOTS MORE!

RING US NOW ON

01736 75 72 77

Fernleigh'



**BED & BREAKFAST
EN SUITE
COLOUR TV
TEA & COFFEE
NON SMOKING
ALL ROOMS**

**26 COMMERCIAL RD
HAYLE
01736 752166**

APOLLO 11 EXTREME HAS LANDED IN HAYLE

Apollo 11 Extreme Ltd, an extreme sports retailer and training group have just opened their first shop in Cornwall. The organisation chose Hayle because of its location on the north coast and stunning beaches nearby, also the community within Hayle has many economic issues that have prevented many individuals from participating in the world of extreme sports. Over the last few years a number of new sports have evolved harnessing either the power of the wind or the force of gravity. These include:

Mountain boarding. This involves riders on oversized skateboards either racing a downhill dirt course, riding on the beach with a new genera-

tion power kite or riding free style over a course of jumps.
Dirt Surfing. Similar to mountain boarding but the rider rides a scooter/mountain bike hybrid. These machines generate much higher speeds than the mountain boards.
Kite Surfing. Surfing but using a large power kite to pull the rider across the water.



Apollo 11 Extreme Ltd plan to introduce these new sports, not forgetting the more traditional skateboarding, surfing etc., to West Cornwall not only by opening shops in the area (another is planned for Falmouth) but also by working closely with the local youth populous. By providing high quality training we show individuals how to use local resources and teach people to work in harmony. Each

Sunday, training days take place at various locations around the county. Images of the latest day can be found at Apollo 11's website

www.apollo11extreme.com

Well organised and hugely fun, the day gives local kids the opportunity not only to try out these new sports but also helps with developing self discipline, giving them something positive to focus on – an area sadly lacking in the lives of many of them.

Those that show potential can in some cases be offered a position on the Apollo 11 team, which competes throughout the year around the UK. Apollo 11 takes working with the local kids very seriously and feels that we have much to offer anyone who might want to be part of this well-run, friendly company.

Our new office/shop can be found in Pratts Market, upstairs, open Tuesday – Saturday 10am – 5pm.

So please come along and have a chat, meet the guys and girls, but most important of all have fun!

Kevin Kimber 01736 752522

HAYLE IN BLOOM 2004

The last meeting of the Committee was way back in November 2003, now we have the New Year and new ideas to improve Hayle's floral environment.

In December more daffodils were planted, donated by Mike Richards the daffodil farmer at Carwin Rise, for which we are most grateful. Willing volunteers gave up their Sunday to plant them out, plus our two lovely gardeners gave of their free time. We

D.W. CAR & VAN HIRE HAYLE

**FREE DELIVERY & COLLECTION
VERY COMPETITIVE – ALL INCLUSIVE PRICES
NO VAT- NO HIDDEN EXTRAS**

**(Saloons, Estates, People Carriers & Vans)
For Friendly Service please call Doug**

**Hayle 01736 754197 Open
Mobile 0778 856 3966 7 days**

www.dwcarandvanhire.com

Email doug@dwcarandvanhire.com



must count ourselves lucky to have such dedicated and caring gardeners, not forgetting Lance who picks up all the rubbish that people will keep throwing on the ground. What do their own homes look like, one has to ask. Lance has also been noted giving up his spare time to litter pick. Please everyone, use a bin, teach the children to do the same, and also PLEASE pick up after your dog. Our cleaning and tidying project at Loggans roundabout has started, the scrub has been cleared and the area is to be planted with flowering shrubs. A big thank you to Geoff Henwood for clearing the area for us. I am sure you will all agree that it is already a vast improvement.

The Flower Club has been working on the scented garden for the blind in King George V Memorial Walk, plant-

ing hyacinth bulbs and shrubs with gold coloured foliage. These were chosen because yellow is the last colour to fade from the vision of someone who is losing their sight. The shrubs have been underplanted with polyanthus.

Richard Selby-Boothroyd, Chairman Hayle in Bloom Committee.

HAYLE LIBRARY NEWS

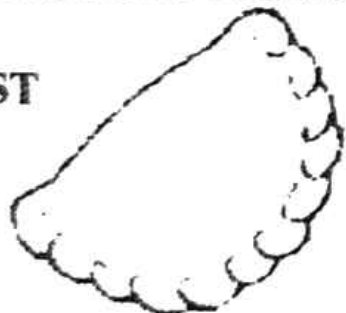
During the week of half term we will be holding a children's felt making two hour workshop for the over fives. Entry will be 50p and places are limited so please book in advance to avoid disappointment.

We are looking to expand our readers circle and if you wish to join please enquire at the library. During

PHILP'S

FAMOUS PASTIES

EST



1958

BAKING 7 DAYS A WEEK
FOR THE GREAT TASTE OF
CORNWALL'S
PREMIER PASTY MAKERS
WITH OVER 40 YEARS
EXPERIENCE
VISIT US NOW
AT OUR SHOPS AT-



**1, EAST QUAY,
 HAYLE**

01736 - 755661



**1, FOUNDRY HILL,
 HAYLE**

01736 - 753302



**MARKET PLACE,
 MARAZION**

01736 - 710332



**THE SQUARE,
 PRAZE & BEEBLE**

01209 - 831360

the month of February the readers circle book is "Seeking Sanctuary" by the author Francis Fyfield.

Through the months of February and March there will be new book promotions please come along and have a look, and try something different!

Hayle Library provides free computer use for all members of the public, a half hour for adults and an hour for children. After that if you are a library member it is £2 an hour or £3 for non-members.

If you are in receipt of:-

Council Tax Benefit

Housing Benefit

Jobseeker Allowance

Working Families Tax Credit

Disabled Persons Support

Income support

You are entitled to one free hour and can extend free use by two further half hour sessions if no other customers are waiting. Remember it is free to join the library. Why not come along and meet our Study Support Officer who can help you to surf the net, set up an e-mail account, write a curriculum vitae or just general training? There is no charge for this service, learn in a friendly relaxed atmosphere.

Have you a computer at home?

Why not visit our web site

www.cornwall.gov.uk/library, you can renew your books or place reservations on-line without leaving home. Take advantage of being able to browse our catalogue of books CDs,



The Farm Shop
31 Penpol Terrace
Hayle

Open 6 days a
week 8am - 5pm

For all your local
produce, fruit,
vegetables,
plants & flowers,
free range eggs,
local honey,
and lots more.

videos, talking books and the latest PC and Playstation games.

If you have any queries please visit us, phone 01736 753196 or e-mail haylelibrary@cornwall.gov.uk. We look forward to hearing from you.

Hayle Library Staff

Junk telephone calls.

Are you sick and tired of being telephoned by sales-people? To reduce the amount of unwanted telephone sales calls contact:

The Telephone Preference Service
5th Floor, Haymarket House

1 Oxenden Street

London SW1Y 4EE

Tel: 0845 070 0707

www.tpsonline.org.uk



Brookvale

Residential Care Home for the Elderly

Family run home, by the resident proprietors Mr & Mrs Broadbridge & Mrs Pleasants RGN, which prides itself on a personal and caring environment. Situated in the centre of Hayle close to all amenities.

Private and DSS residents welcome whether short or long stay. Fully registered with the CCC, and a member of the Cornwall Care Homes Association.

- all necessary care & assistance supplied.
- large garden and patios
- two lounges & spacious bedrooms
- full 24 hour care & central heating
- weekly hairdresser & chiropodist
- domiciliary services, day care & M on W

6 Commercial Road
Hayle, Cornwall TR27 4DG

Telephone: 01736 753608



SO MEN ARE TWO PENCE
ARE THEY. WELL THAT'S
DARN DEAR!

"BEFORE OUR VERY EYES"

The second of a series of articles looking at some familiar and some not so familiar Hayle buildings.

HAYLE COMMUNITY CENTRE

Most people who live in Hayle will have some notion that the town possesses a Community Centre and some will even know where it is (that white E shaped building between the Frank Johns Centre and Bodriggy Health Centre in Queensway) but do many of us have a clear idea of what goes on there?

The answer is a whole variety of activities and services across a wide spectrum of interests and social needs.

A stroll through the centre's corridors and a glimpse into the many side rooms of differing shapes and sizes would, for example, reveal the offices of the NSPCC or the spacious rooms where "Link into Learning" provides a quality basic skills service free to all adults and where, amongst other activities, the computers hum quietly as nervous learners of all ages are gently encouraged by experienced tutors to master the unfamiliar technology. More adult education is on offer from Penwith College's Open Learning Centre where again the emphasis is entirely on welcoming and encouraging people to have a go at acquiring new skills. And talking of new skills, how about brushing up your sign language? The W.E.A. are offering just such a course. There is really so much on

offer at the Community Centre in the field of learning that you should never listen to anyone who tells you there is nothing to do in Hayle!

Even if you reckon you have had enough education to last you a lifetime there might well be something on offer at the which could be of practical help with everyday problems. The Citizens Advice Bureau have an office there, as do Victim Support, Relate and the Penwith Credit Union to name but a few of the 30 or more organisations which meet regularly or occasionally in the Centre. Why not pop in next time you are passing and check out the set up? You will find a warm and friendly environment with wheel chair access too. Hayle Town Council, who acquired the building about ten years ago after its former lives as a home for old people and for

come to
FOOTSTEPS in Hayle

WE SUPPLY ALL YOUR FOOTWEAR
INC. BALLET & TAP SHOES

27 Penpol Terrace
01736 - 757735

children, are keen for us to look upon the building as a "one shop drop in" centre and there are ambitious plans afoot to upgrade and expand the facilities there.

The Hayle Town Council itself has set aside a significant sum for possible development of the centre and they are now actively engaged in seeking matched funding to push the project ahead. Plans include the possibility of creating at the centre a



Cornwall Electrical Contracting

Receive 10% discount on
1st job with this advert!!

Domestic—Commercial—Industrial Electrical Contractors

- *Rewires/ New build*
- *Extra Sockets/ Lights etc*
- *Showers*
- *Heating*
- *Security Lighting*
- *Telephone Extensions*
- *Faults and Repairs*
- *Testing and Inspections*
- *House purchase surveys*
- *Portable appliance testing*

City & Guilds Qualified Electricians
Free Estimates!
All work to IEE BS7671 and
Guaranteed!

Freephone 0800 093 8640
Mobile 07787 980555

PENPOL GARAGE

(Neil Murley & Martin Richards)

17a Penpol Terrace

Hayle

Tel. 01736 757011

Mob. 07971 842908

**all general repairs on
all makes of vehicles**

MoT work

Tracking

Tyres

MG specialists



Recommended

large hall with 400 seats which would, amongst other things, provide exciting opportunities for local drama, music and sports organisations. At the moment Hayle does not possess a purpose built performance venue (apart from the facilities available in our schools) so there is keen interest from a number of local groups in what might be on offer at the centre in the not too distant future.

So the future is looking bright for our community centre, but we do not have to wait to make use of what is on offer at the moment. Town clerk Eleanor Giggall, who is the fount of all knowledge on this topic, reports that whilst there is currently a very good take-up on the facilities on offer at the centre, if you feel your group or organization might benefit from hiring a space there on a regular, one-off or

occasional basis then it is always worth getting in touch with her on 01736 755005 to check availability.

We do not always approve of the decisions made by our elected representatives but there is little argument that the decision by our town council a decade ago to purchase on our behalf the building which has become Hayle Community Centre was one of their best initiatives from which we are now reaping a considerable benefit.

Mel Jones

Last Shout at The Star Please

Towards the end of 2003 Paul and Christine called their final "Last Shout" at the Star Inn, St. Erth.

They've taken on a food based pub in Oxfordshire and we wish them all the best for their new venture.

The Star has been taken over by local couple Mark and Debbie Barrett who have already set to work to transform it into the kind of pub they want it to be.

Their aim is to create the atmosphere of an original village pub by improving the comfort and facilities on offer. They have extensive plans for refurbishment and have already made improvements to the kitchen to accommodate the new menu.

As well as existing customers, Mark and Debbie hope to attract back many of those village folk who have not been to the Star for a long time. Everyone can be sure of a warm welcome and the regulars have been very pleased with the changes that have already been made. No doubt

there are many more to come and we wish Mark and Debbie and their staff every success in the future.

To complete the musical chairs in the pubs, Mike Reardon who was the long-serving head barman at the Star has become landlord of the Copperhouse Inn in Hayle. Mike acknowledges that he has a major task ahead running a large pub but his experiences at the Star should stand him in good stead.

We wish Mike, Jenny and his family and the Copperhouse staff lots of luck in 2004.

R. Winterburn. Pump Secretary.

CHRISTMAS TIME

*Our Christmas really wasn't fine
The family all fought
And no-one liked the presents
That grandmama had bought*

*With bells that failed to jingle
With snow that turned to slush
A very 'merry' Santa
Slurred out "what's all the fuss"*

*The turkey dry as was the pud
And custard that was hard
And Rudolf – he's the dog of course
Had been sick out in the yard*

*Jane hated all her presents
And John fell off his bike
And Mother – after all these years
Bought beer Dad didn't like*

*But after all is over
In debt up to our ears
We look back and agree it was
The best Christmas in years*

Nicolette A. Bodilly

Tel 01736
752119

TREVASSACK Mob
NURSERIES 0773 073 3263
GARDEN CENTRE
HIGHLANES HAYLE.

OPEN 10.30/1.00pm-2.00/5.00pm

*LARGE SELECTION OF PLANTS FOR BEDDING, TUBS
AND HANGING BASKETS, INCLUDING FUCHSIAS, SURFINAS,
OSTEO, PELARGONIUM ETC. SPECIAL OFFERS ON GLAZED
POTS & CONTAINERS, SEED TRAYS, PLASTIC TUBS & BASKETS,
WIRE BASKETS, COMPOST, GROW BAGS. READY PLANTED
BASKETS & TUBS. BAMBOO WINDBREAKS, STONE
ORNAMENTS ETC. VARIOUS SHRUBS IN CONTAINERS.
WOODEN TROUGHES, LOG EDGING ROLLS.*

Top of Highlanes near the football club

YOUR LAST WILL AND TESTAMENT

Is your last word

Have you yet stopped to think what would happen to those around you in the event of your untimely death? What happens to your home, your savings, your personal possessions, and quite importantly, who would take care of your dog or cat or other pets?

Untimely death can cause those nearest and dearest to you a great deal of heartache and financial expense. Making a simple Will, or up-dating an old Will, in clearly understood plain English, can help those who survive you cope with their loss if you clarify your wishes in advance. A simple Will does not cost a fortune, and once it is done, you can get on with the business of living. It makes good sense, - make a decision - Make a Will.

Contact Jennifer Jackson

JENNIFER JACKSON

01736 751718
0778 682 1116

**QUALIFIED LEGAL
ADVISOR**

**SENSIBLY PRICED LEGAL ADVICE AND HELP
IN PLAIN ENGLISH**

**HOME VISITS DURING OFFICE HOURS AND AT
WEEKENDS**

**FRIENDLY AND CONFIDENTIAL
SERVICE COVERING A WIDE
RANGE OF LEGAL AND LAW
RELATED TOPICS**

**32 RIVERSIDE,
ANGARRACK
HAYLE TR27 5JD**

ARCHERS OF THE WEST

The club was formed in June 2000 by a group of enthusiastic and dedicated archers. It is a small, enthusiastic club based in Hayle, with an age range from 8 to 60 plus, catering for all abilities. A number of our members currently shoot for the Devon and Cornwall County side and the National squad. We have a number of county coaches one of whom coaches disabled archers at national level. The club also runs "Have-a-Go" events for local schools and associations.

We are organizing our second indoor competition at Carn Brea on the 22nd February. This year it is sponsored by "One Stop Kitchens" (01736 851060) and supported by National Maritime Museum, Eden Project, Flambards, Trebah Gardens and Brewsters Loggans Moor. Last year we attracted archers from as far as Bournemouth with a very good contingent from the Cornish clubs. Our aim is to encourage more people into the sport and to help them achieve whatever level they desire. Having a solid core of coaching knowledge with county and international experience, we look to the archers of the future as the way forward.

If you have ever wanted to try the ancient sport we will be running a **"HAVE-A-GO" on Saturday 20th March at Phillack Church Hall from 10.30am to 3.30pm.**

This year's beginners course starts at Phillack Church Hall, is open to all to all and starts on 4th April at 7pm,

SINGER & PFAFF SEWING CENTRE

MR & MRS D.M.GIRLING

AUTHORISED SINGER SERVICE
CENTRES FOR CORNWALL

ALL MAKES SERVICED

AT

2 QUEEN STREET, PENZANCE

01736 - 363457

&

11 JOHN STREET, TRURO

01872 - 225168

*NEW & RECONDITIONED
MACHINES ALWAYS AVAILABLE*

the first four weeks indoors with the remaining two weeks out of doors, followed by an improver's course, also out of doors.

We are an all year sport; in the winter months we shoot at Leedstown Hall, and in the warmer months we use Hayle Football Club overlooking Hayle, St Ives and Carbis Bay, which has one of the most scenic views of any archery club. We are indebted to our outdoor hosts Hayle Football Club for their continuing help. Thanks also to Penwith Council for their assistance.

For more details visit our web-site
www.archersofthewest.co.uk

**John Nunn Tel 07774 157370
(mobile) 01736 759686 (Home)**

Letters.....

Letter

I wish you and your team a healthy new year. We all love the Pump, and look forward to receiving it.

I lost my friend last year. She asked her husband for a Jaguar for Christmas. He got her one but it ate her, very sad, I miss her.

*Mrs E.D. Cook, 8 Loggans Walk,
Hayle TR27 5BQ*

Letter

I couldn't agree more with A. Foreman's letter in the last Pump regarding dog fouling. Another of my pet gripes is unlit cyclists, after dark. These are usually youngsters, who are a danger both to themselves and to other road and pavement users. Who are these parents who allow their children out cycling after dark without any lights? And who would they blame in the unfortunate event of their little darlings having an accident?

In common with dog fouling, I was under the impression that unlit cycling was punishable under law. I cannot however recall ever seeing any report in the local press of anyone being fined for either of these offences.

Name and address supplied

Letter

I have received a letter from the Decorative Lighting Committee thank-

ing me for donating the cash prize I won in the "Pump." My husband, Gordon, worked at J & F Pools for 20 years (1960 – 1980) and it's nice to think of a little corner of Hayle twinkling for us!

Mrs A. Boyes, Helmsley, Yorks.

Letter

I see that another commercial site, i.e. Daniels, has been earmarked for housing. I am not against housing per se, just put them in the right place, not crammed into every available nook and cranny. It is a short-sighted policy to lose our shops and replace them with houses. The end result, if this carries on, will be out of town shopping and one long housing estate. Surely a compromise could be reached, with shops below and houses or apartments above, ideal for young people setting up homes.

The life and soul of a town is its commercial centre, and Hayle seems to me to be unfairly targeted to fulfill Penwith's building requirements.

Ex-shop keeper – Name & Address supplied.

Letter

Thank you for your letter and good wishes from the Pump for my recovery. I find writing and bringing a smile to someone's face very therapeutic. I don't get about very much now, I did try a wheel chair (manual) but the slope from the house is rather steep and it would take a winch to pull me up! However I have bought

an electric chair (not the execution type I might hasten to add) but I have not tried it yet.

I would also like to say thank you for the "two pennyworth" regarding the clock (Pump 53). I had started the ball rolling back in 1999 but was met with the usual bureaucratic folderol. However the clock is working, and that is what I set out to do.

Charles Crowle

Letter

Congratulations to those responsible for Hayle's Christmas lights, which were better than ever this time. Whilst out and about in Hayle in the weeks leading up to Christmas, I seemed to see the same two cheery

individuals perilously balanced on ladders above the main street, and we are lucky to have such dedicated people in the town, particularly as nearby much smaller towns, e.g. Angarrack, seem to have an army of people on their lighting team.

One small quibble – giving the amount of work involved, and the lovely appearance of the town when lit up, we seem to switch our lights on closer to Christmas than most other towns, and in the big cities they are switched on in October! Whilst not wanting to go to those extremes, why not advance lighting-up a week, so that we have longer to enjoy the spectacle?

Name and address supplied

**Paul & Tina Treloar at
Copperhouse Post Office**

**Are pleased to announce they have acquired the
complete stock of greeting cards from**

Hayle Bookshop & Gallery

01736 753142

**Roy, Sue & Paul Endersby of
Hayle Bookshop & Gallery**

**would like to thank all their customers for their
past support.**

Tel: 01736 757009 Fax : 01736 756513

e-mail haylebookshop@btinternet

www.haylebookshop.co.uk

ROADCRAFT SCHOOL OF MOTORING

Detailed and patient tuition
from

**CHRIS MILLER, D.T.p., A.D.I.,
M.I.A.M.**

*Learner, Pass Plus &
Advanced Tuition*

*Free Starter Packs

*Video Loan

*Theory Test Papers

*Pre-Test Checks

*Instruction for Nervous Drivers

*Night Driving Lessons

*Motorway Tuition

0800 0260293

01736 752800 (24hrs)



PENWITH LOCAL AGENDA 21 GROUP

Are you interested in helping to
make Penwith more sustainable?

A sustainable community is one
which helps promote the local econ-
omy, supports and increases the
quality of life for its residents, whilst
at the same time doing its utmost to
protect the environment for future

generations. Penwith District Council
are looking for members of the com-
munity and community/ business/
charity groups who would like to be-
come involved with the setting up and
running of a community led environ-
mental/ sustainability group. The ob-
jective of this group will be to help
educate and raise general awareness
of the need for a more sustainable
way of life.

The group will work in partnership
with the Kerrier LA21 Oak Group and
will have an input into the developing
West Cornwall Local Strategic Part-
nership's Environment Sub Group.

If you are interested in becoming
involved and helping do your bit to-
wards making Penwith a better place
in which to live whilst at the same
time protecting both the local and
global environment, please come
along to the next meeting which will
be held at Penwith District Council
Offices, Committee Room 1 at
7.00pm on Tuesday 9th February.

Karen Clowes 01736 336747

WANTED – MUSICAL TALENT!

The Top of the Hill recording com-
pany of Canonstow, Hayle, one of
whose CDs is reviewed in this is-
sue's "Kind of Cornish", is ur-
gently seeking original Cornish
bands and solo artists for national
release. All styles considered, from
punk/rock/ska/metal to folk and Celtic
music. If you think you've got what it
takes, then contact Tim Chapple at
01736 740503, or e-mail
tchapple@tchapple.freemove.co.uk.

RAMBLING RONAN

A few weeks ago those who attended the Hayle Luncheon Club at the Passmore Edwards Institute were privileged to listen to a presentation by Graham and Sylvia Ronan; founder members of the Ronan Group. Some local residents may remember them from their years running the shop at the Beachside Holiday Park but four years ago Graham suffered a serious stroke which might have reduced many to life as an invalid. Graham, appropriately for a man who served for thirty years in the Royal Navy, is made of sterner stuff and is now brimful of vigour as befits a serial rambler! It was during his convalescence that the Ronan group came into being. Sylvia, herself a keen walker, began

to map out and photograph walks she went on whilst Graham was confined to the house so that he could enjoy the walk without actually participating in it. Once he had recovered the mapping and route descriptions became a more formal undertaking and the Ronans have now produced a number of Walk Maps describing circular walks in the locality.

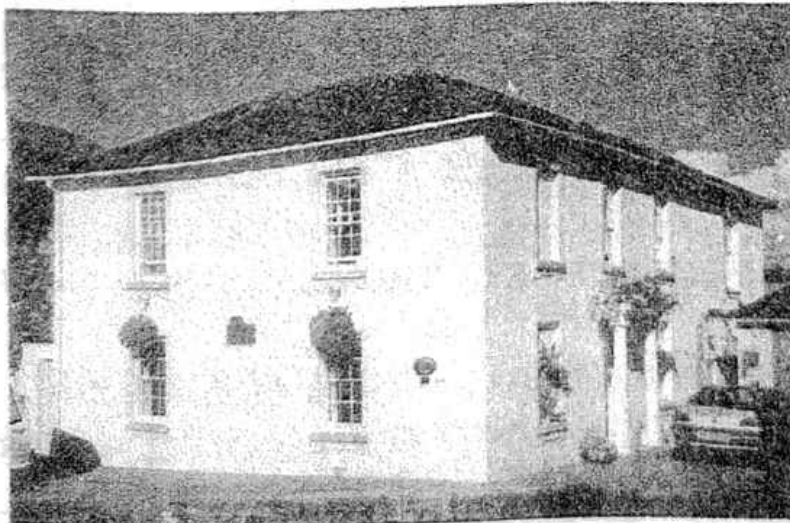
What started as a hobby soon became almost a Cottage Industry! Sylvia was contacted by a number of local Parish Councils eager for her to sort out walking routes they could advertise to visitors as well as local residents. You may well have seen the Ronan Group's neatly produced maps on sale for a modest fee in Pubs and Shops as well as tourist offices. Many of these walks, which can vary from an extended stroll to a

CRANFORD HOUSE BED & BREAKFAST

OPEN ALL YEAR – CHILDREN WELCOME

*ALL ROOMS
EN-SUITE*

*NON
SMOKING*



*ALL ROOMS
EN-SUITE*

*OFF ROAD
PARKING*



PETER & PEGGY DARLOW

01736 752618

Foundry Hill * Hayle * Cornwall * TR27 4HW
cranford-guesthouse@talkgas.net

vigorous hike of several hours are in adjacent Parishes to Hayle. You could for example do a walk from Marazion or possibly St. Hilary. The route descriptions are designed to be read by those with no experience of map reading and Sylvia assures us it is impossible to get lost! There can be few people in West Penwith with greater knowledge of rights of way than the Ronans and perhaps it was no surprise when Graham became Chairman of Penwith Access and Rights of Way Forum. This organization came into being in 2001 as a consequence of the devastating effects of the closure of the footpaths during the foot and mouth crisis in 2000. The Forum coordinates the activities of a number of local organisations involved with walking and the countryside, and re-

flects the importance of our rights of way to the tourist industry as well as to local people. With growing concerns about obesity in children, for example, the importance of encouraging walking as a healthy and cheap recreational activity is now appreciated. Proof that the issue is being taken seriously can be demonstrated by the money released to support the Forum both from the District Council and from Objective One's Rural Key Fund. From January this year the Forum has a full time Paths Officer who will be concerned with the preservation and upkeep of our rights of way.

If you are concerned about the state of local footpaths or have questions about rights of way then Graham will be happy to hear from you. The Ronan Group has a website on



NURSERYTIME

SUE & PAUL BUTLER

BABY EQUIPMENT & CLOTHES AT COMPETITIVE PRICES.

CORNISH MARKET WORLD, PAR. ST AUSTELL.

PRATTS MARKET, FOUNDRY SQ. HAYLE.

SHOP 01736 752233

NOW ALSO AT POOL MARKET WEEKENDS, 01726 817771

www.WestCornwallFoothpaths.com.

You may find that what you see there deals with concerns that you share and you would be welcome to join the group. Alternatively you can give Graham or Sheila a ring on 01736 740542. But a word of advice; telephone in the evening because if there is light in the sky they will probably be out walking!

Mel Jones

IT'S BEHIND US NOW - OH NO IT ISN'T!!

It is with regret that HADS has had to cancel this year's pantomime.

Many things seem to conspire against us this year. A four page letter arrived setting out new regulations concerning children. Although most of these are understandable, many are also very difficult to put into practice. For instance, we need four changing rooms, one for boys, one for girls and two for adults. The Community School is the only venue in Hayle which could meet these needs, and unfortunately low funds mean we simply cannot afford to hire it.

It seemed at one point that HADS would simply fold and disappear into oblivion but a few stalwarts got to-

Mrs Terry Lello
COUNTY COUNCILLOR



If you need any assistance with matters relating to County District or Town Council I would be pleased to help and can be contacted at:-

telephone

01736 - 757507

or

e-mail

tlello@cornwall.gov.uk

gether and decided to carry on regardless.

We have therefore for the time being downsized the group and are rehearsing a variety show, with some songs from musicals and some of the old favourites (e.g. Bless 'em all and Sally) and some comedy sketches.

We hope to travel around to different venues with the minimum amount of props and costumes so if you know



W. J. WINN

FUNERAL & CREMATION DIRECTORS

PRIVATE CHAPELS OF REST

24 HOUR SERVICE

69, FORE STREET
HAYLE
01736 752124

&

TRENWITH TCE
ST. IVES
01736 793029



anyone who would appreciate a performance (about 1 ½ hours) please let us know.

Otherwise watch this space for dates and venues. We are hoping that perhaps a couple of years like this and something may turn up.

What we desperately need is a permanent base where we can rehearse, perform and store some costumes and props. However at present there is nothing in Hayle which meets our needs and is available and affordable.

It will be a shame if HADS should fold after all the hard work people have put into it, but unless something turns up this will be inevitable.

If you are interested in coming along or feel you could help in any way please give us a ring on 01736 757633.

Lin & Ken Townend.

CHRISTMAS QUIZ ANSWERS

Many thanks to all those who entered our fiendishly difficult Christmas Quiz. The answers were:-

1. MERRY CHRISTMAS EVERYBODY
2. WHITE CHRISTMAS
3. A WINTER'S TALE
4. MISTLETOE AND WINE
5. ROCKIN' ROBIN
6. FOOD
7. CAROL
8. CHRISTMAS TREE
9. BERRY
10. HOLLIES
11. GRANDMA'S PARTY
12. CHRISTMAS
13. WISH IT COULD BE CHRISTMAS EVERY DAY
14. MARY'S BOY CHILD
15. NUTCRACKER SUITE
16. SAVIOUR
17. ANGELS

BIGGLESTONS

TRADING IN HAYLE FOR OVER 100 YEARS

**Please try us first for the best of Hardware,
Ironmongery, Kitchenware, Paraffin and Garden
Supplies.**

01736 752219

*Summer, Autumn, Winter, Spring
We can supply 'most everything*

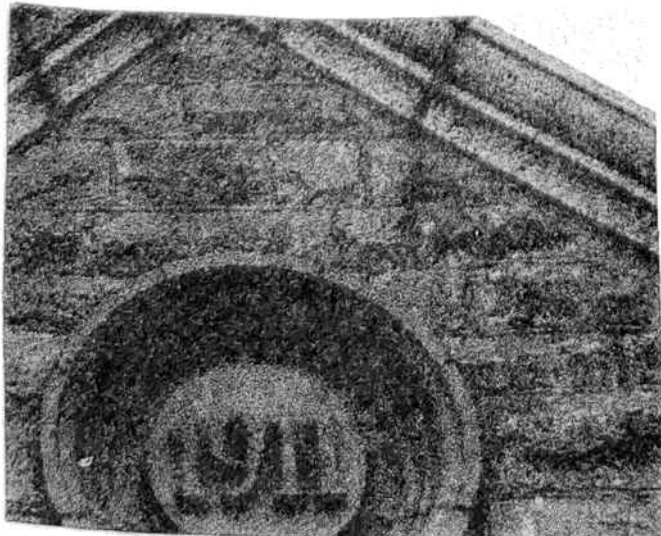
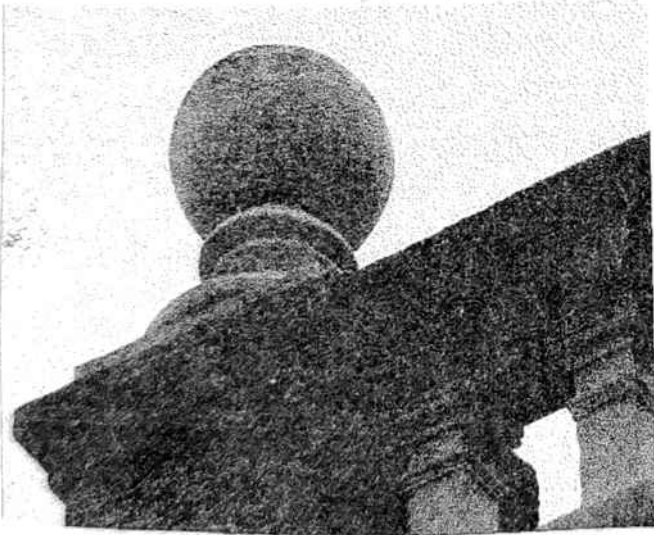
PLEASE SUPPORT LOCAL TRADERS.

18.LITTLE DONKEY 19.TURKEY
TROT 20.DECEMBER

Congratulations to our lucky winner, Mrs A. Foreman of Hayle Terrace, who won the £50 prize.

WHERE IN HEYL AM I?

The following two photographs were taken in Hayle. For this issue's competition simply write in and tell us the location of the items shown. A prize of a £20 voucher, which can be spent with any of our advertisers, will go to the first correct entry drawn out of the hat. Closing date 20th March.

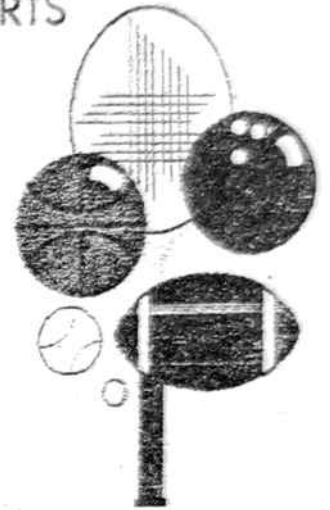


ANGOVE SPORTS

COPPERHOUSE, HAYLE
01736 - 752238

FOR ALL SPORTS
EQUIPMENT
CLOTHING &
FISHING
TACKLE

*
RACKETS
REPAIRED
& RESTRUNG



RSPB NEWS

We've had a busy time of it lately, mainly spent cleaning up the contaminated land at Ryan's Field which was once connected to the River Hayle – and 29 hard rock mines upstream. The acid mine drainage from these has resulted in high levels of heavy metals being deposited in Ryan's Field over the past several hundred years and partly explains the lack of life, birds included, at this part of the reserve. I've been busy seeking advice from the Camborne School of Mines, Environment Agency and English Nature on this one and we've now addressed the

ALAN ORCHARD & SONS

APPRENTICESHIP SERVED



PROFESSIONAL TRADESMEN

CARPENTRY & JOINERY

UPVC FASCIAS

ROOFING

BUILDING & MAINTENANCE

01736 756687

07787 148571

27 GUILDFORD ROAD
HAYLE TR27 4PP

*David Flumm, RSPB Cornwall
Reserves 01736 711682*

The RSPB is the UK charity working to secure a healthy environment for birds and wildlife, helping to create a better world for us all.

MILLENNIUM VOLUNTEERS

Millennium Volunteers is a new, country wide scheme to enable 16 to 24 year olds to develop their interests, skills and experience through voluntary and community work.

As a MV you could be a DJ in a youth club, a sports coach for your local team, be involved with conservation projects or help to run arts and music workshops at a local festival.

Apart from enjoying your chosen activity, meeting new people and learning new skills, what will you get from being a Millennium Volunteer?

A T-Shirt, a Beanie and an MV fleece (but not all at once!)

Your travel expenses will be paid so you're not out of pocket.

You will get recognition for the time and effort you put in. After 50 hours you will receive a certificate and a lapel pin, at 100 hours you'll get an award (and the beanie) and after 200 hours in a year, you'll get an award of excellence (and the fleece.)

When you get your Award of Excellence we will organize a presentation event of your choice, so that you can celebrate your achievements.

Your experience as a volunteer could help to get you a place on a college course or even help to get you a job.

MV is very flexible, you can arrange

issue by introducing calcium-bentonite ("cat-litter" to you and me) into the contaminated areas: all 6 metric tones of it! Coupled with work around the lagoon, this has cost the RSPB almost £8,000 to put right but thankfully EN came to our rescue with 50% funding.

I wasn't so thankful to the fly-tippers who deposited other unwanted items there over Christmas, and also took one of my benches away. As the latter was concreted into the ground, one wonders what more we can do – it won't be replaced I'm afraid.

On a happier note, the birds have been great and we still have the North American Lesser Yellowlegs and American Wigeon on Lelant Water competing for space with all the usual species.

All Aerials

TV/FM Aerials & Satellite Specialists

*

Freeview & Sky Digital

*

Channel 5 Reception Problems & Tuning

*

Satellite Systems Installed & Maintained

*

Video/Satellite Playback Systems

*

Multi-point Systems—Domestic & Commercial

*

Members of the Confederation of Aerial Industries

*

Free Local Estimates

All Work Guaranteed * Fully Insured*
Competitive Prices * Prompt Reliable Service

For Free Friendly Advice Call

01736 759225

Mobile: 07979 503907

Email : info@allaerials.co.uk

Visit our web site: www.allaerials.co.uk

to do a few hours a week or build up your time at weekends. If you already have something in mind that you would like to do, even starting up your own project, then MV can help to arrange it and make sure you get the best out of it.

Mary Gosling 01209 213179

Mobile 07974 706376

AWARD FOR HAYLE MILLENNIUM VOLUNTEER

Hayle resident Michael Knight, aged 17, who has been volunteering with the St John Ambulance for 3 years, has achieved the Millennium Volunteer 200 hour National Award of Excellence, and the award presentation took place at the St John Ambulance hall on November 27th 2003. Michael has in the last 3 months been able to work

towards extra recognition with the Millennium Volunteers as a St John Ambulance Cadet Corporal. His training included essential skills and firefighting exams, enabling cadets to volunteer for public duties which help community events to go ahead safely for example Hayle Carnival.

Michael additionally gave his time to support the Hayle Town Band by stewarding the charity car park at Godrevy throughout the summer holidays. Michael's support and enthusiasm contributed towards the band raising £1,000, which helped them to reach the national finals in Dundee.

Mary Gosling, Millennium Volunteer Area-Coordinator, said "I am pleased how Michael has earned national recognition for his time and commitment he has given to the

David Moyse Clothing

**YOUR
LOCAL
SHOP FOR**



**MEN'S, WOMEN'S &
CHILDREN'S CLOTHING**

You are welcome to come in and browse



Call us now

01736 752053

**38 FORE STREET,
COPPERHOUSE
HAYLE**

***Keep cosy
this
Winter!***

***We have
thermal vests,
hats and
gloves,
warm tights &
woollen socks
all in stock.***

Hayle Community." She also pointed out that since MV started in 1999 over 1300 young people have enrolled.

MV offers young people the chance to develop their interest, gain skills and experience. If you or anyone you know is interested in finding out more about MV in Hayle or are a charity or non profit making organization that may be able to offer opportunities for Millennium Volunteers in Hayle, please see the contact number below.

Mary Gosling, Millennium Volunteer Coordinator, Kerrier, Hayle and St Ives. 07974 706376 or 01209 213179

A WEIGHTY PROBLEM

*I once knew a young woman called
Brenda*

*Whose ambition was to become
slender*

*So she ate lots of steamed fish and
plenty of greens*

*Food she wouldn't even try when in
her teens*

*But she expected results far too soon
And one day just about noon*

*Feeling very irate at not losing
weight*

*She had a fry-up of sausage, egg and
tomatoes*

*After two large avocados for starters
Brenda never succeeded in reducing
her figure*

*As a matter of fact she got bigger
and bigger*

Yorkie

LOSE WEIGHT FEEL GREAT AND KEEP IT OFF!

WANTED: People serious about achieving noticeable weight loss in the next 30 days.

- * Naturally derived products
- * Personally tailored programmes
- * Full customer follow up
- * 30 day money back guarantee
- * Eat your favourite foods

Call: Lucy

01209 832312

www.shedpoundsnow.co.uk
Independent Herbalife Distributor

Junk mail.

To reduce the amount of personally addressed junk mail coming through your door contact:

The Mailing Preference Service
Free Post 22

London W1E 7EZ

Tel: 0845 703 4599

www.mpsonline.org.uk

Allow at least four months before you see a reduction in the mail you receive.

The Lord is my shepherd; I shall not want.
Psalms 23 v.1

SPAR



HAYLE. OPEN

6.30am-10pm,

SEVEN DAYS

A WEEK

Telephone us on (01736) 753327

FOOD TO GO

NATIONAL LOTTERY



FRESH BAKED BREAD

SPIT ROAST CHICKENS



WE ACCEPT CREDIT CARDS AND GIVE CASHBACK

Light Up St. Erth

Throughout the year an enthusiastic group of St. Erth residents have been planning to emulate the successes of the Christmas lights in other local towns and villages.

Under the guidance of Chairman Dennis Williams they have staged several fund raising events and also applied for and received a grant from Penwith Community Development Trust.

As a result of this and a lot of help from other similar groups St. Erth was able to have its first display of lights on and around the Star Inn and the village shop. The switch-on was by local retired farm worker Richard Taylor, who had put in a lot of hard work to set up the displays.

Obviously, this was only a start and the plans are to be able eventually to light up the whole village although Dennis has admitted this may take up to five years.

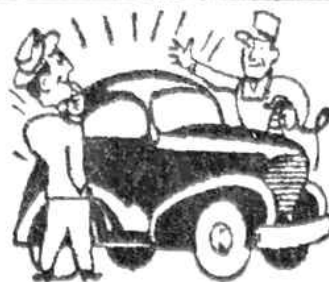
The committee are always looking for help and ideas for fund raising so if you think you can assist in any way then please contact Dennis on 01736 741188

R. Winterburn, Pump Secretary

Well Done!

Many of the young people at Hayle Youth Club have been learning how to run a café with the assistance of Hayle Youth Project Staff.

On December 20th they put their skills to the test, when they cooked and served a three course meal to some members of the public, who were delighted with the food. It was



**Spit
&
Polish**

**Vehicle Valeting
Specialists.**

Unit 10C
Central Garage Hayle.

*From a car wash to a full
Valet, Ian and staff would
like to welcome customers
old and new.*

Phone 01736 753332

beautifully presented and served very nicely.

So thank you to:

Lauz Hayward
Becky Dawson
Vicky Dawson
Sarah Bawden
Claire Pope
Tamara Worledge

Anyone interested in being part of the management committee which meets only 6 times per year please contact Mel on 01736 755790

Sarah Turk

Hayle Carnival Committee will be holding their AGM at Hayle Bowling Club on Feb. 25th at 7.30pm. All are welcome.

HAYLE OUT OF SCHOOL CLUB
Needs casual staff for sickness
cover and school holidays. Good
rates of pay.
Telephone (01736) 757695



For better
mental health

The Befriending scheme is a voluntary organization affiliated to Mind, the National Association for Mental Health. Our service offers structured, yet informal support, to enable people to regain their confidence and to establish their own

social networks.

The backbone of the befriending scheme is the befrienders and we are always happy to welcome inquiries from people who would like to become volunteer befrienders. Some of the reasons our existing volunteers are drawn to befriending with Mind include an interest in mental health and a need to use their free time rewardingly, previous experience of mental distress and a desire to use this experience to support others, and an interest in acquiring skills and understanding to support a career change.

Mind befrienders are ordinary people who wish to use their qualities to support somebody through difficult times. These qualities include effective listening skills, understanding,

SUITES & SOFAS CLEARANCE WAREHOUSE

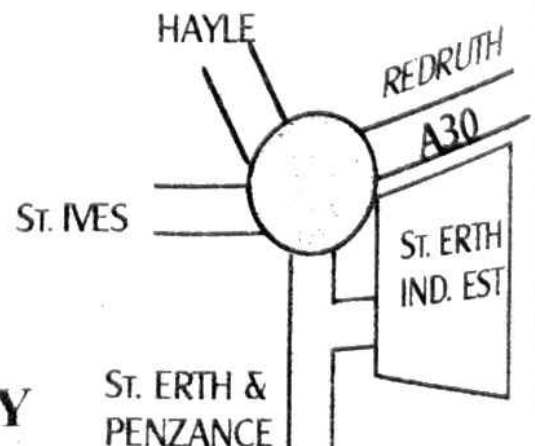
UNIT P, ST. ERTH INDUSTRIAL ESTATE, CANONSTOWN, HAYLE
*BANKRUPT STOCK, MAIL-ORDER RETURNS, FACTORY CLEARANCES,
END OF LINES ETC.*

SUITES, SOFAS, ARMCHAIRS & COMBINATIONS
AVAILABLE AT CLEARANCE PRICES

FOR DETAILS OF OUR CURRENT OFFERS
AND TO VIEW AT ANYTIME
PLEASE PHONE

07779 760686

**OR VISIT OUR WAREHOUSE
BETWEEN 11am – 4pm DAILY
WHEN WE'RE OPEN TO VIEW**



compassion, and a commitment to spend up to two hours per week with a client. Befriending can take many forms such as listening, chatting, a short outing, sharing an activity or going for a coffee.

The benefits Mind brings to the community are promotion of better mental health, making a difference in the community, and improving understanding and the perception of mental health issues.

Two hours a week could make a difference to someone in our community who is looking forward to better mental health.

For more information on becoming a volunteer befriender, please contact **Jackie, Wisdom or Chris on 01209 714550.**

HOW SAFE ARE YOUR CHILDREN WHEN USING A COMPUTER AT HOME?

We are constantly hearing horror stories in the press about children being adversely affected by unscrupulous people and pornography, over the Internet.

How can you prevent this happening to your child? So often children seem to know more about computers than their parents.

The government, sponsored promoter of computer related activity **Parents On Line**, have recently created a course for parents to protect children from this problem.

LINK into LEARNING are running this 3 hour course for parents every

Quality resurfacing & repairs service

Repair Resurface Replace

Call us now for more information

Phone 01736 756077

92 Commercial Road
Hayle, Cornwall
TR27 4DJ

Cspray
Baths and Kitchens

INSURANCE WORK UNDERTAKEN

As you can see we have yet again had another name change, for reasons beyond our control. We feel that this new name states more clearly what we are about, either repair if possible, if not then resurface, and if neither of these are suitable, replace.

Friday morning, between 9.30 – 12.30. It is **FREE** and not to be missed.

Ring Pauline on 01736 759051 for further details, or if you prefer, just turn up at the Community Centre.

UNHAPPY WITH YOUR NHS TREATMENT?

Do you want to complain about NHS treatment? The Independent Complaints Advocacy Service based at the Citizens Advice Bureau in Liskeard is up and running and able to support patients in Cornwall through the NHS Complaints procedure.

ICAS can help with complaints about GPs, Opticians, Pharmacists,

Dentists, Hospital and Ambulance Services. We can give you information on how the complaints procedures work, help you compose a letter of complaint or write on your behalf and attend meetings with you about your complaint.

ICAS is free and independent of the NHS. For more information contact ICAS on 01579 346500.

RAT ON A RAT

The Police have received some good information so far, which has been used or is in the process of being used to tackle the problems of drug dealers ruining our lives and the lives of our children. As a father, I live with the fear that a drug dealer

may destroy the life of one of my children. As a Police Officer, I live with the fear that a drug dealer may destroy the life of one of YOUR children. Help me to 'crack down' and protect our children.

This is your chance to RAT ON A RAT – or remember you can always speak to your Neighbourhood Beat Manager.

RAT ON A RAT (Anonymously)
0800 555111

*PC 5080 Burdaky, NBM Hayle
North, Hayle Police Station*

PRATT'S MARKET

There is one vacant downstairs unit to let at a competitive rent. For details see Andrew in BK Video at Pratt's Market, or phone him on 01736 755277.

**OVER-STRESSED?! OVERDRAWN?!
OR JUST OVERWEIGHT?!**

**IS IT MIND OVER MATTER?!
DOES YOUR MIND MATTER?!!!**

**ARE YOU GETTING FRUITY ENOUGH?!!
(SORRY – FREUDIAN SLIP!)**

**ARE YOU GETTING ENOUGH FRUIT?!!
AND VEG & ONLY THE BEST?!**

**TRY COLIN'S
MARKET GARDEN**

**OFF
FOUNDRY SQUARE
THAT'S WHERE!**

**DAFT
DIAGNOSIS
By *bajjer arts*
756756**



Victim Support Cornwall

Helping people cope with crime

VICTIM SUPPORT CORNWALL offers emotional support and practical help and information to victims of crime and their families. We also offer support to those called to give evidence in criminal trials in either the Crown or magistrates Courts. We offer our services to any member of the local community who has suffered a crime regardless of whether they report it to the Police.

In 2002 Victim Support Penwith responded to 220 referrals from Hayle. In 2002/3 90% of the referrals came from the Police, however we are aware that only 50% of crimes committed are ever reported to the Police, which means that the other 50% of victims are never offered the support services which we provide.

We should like to try to remedy this by taking our services out into the community. Our "Penwith Outreach Project" (POP-in) is designed to address these issues, by arranging for two of our trained volunteers to be in a safe, public but confidential place and will be ready to meet with anyone who seeks our support and assistance. It may be that help is needed with completing a claim form, or with finding a glazier to carry out repairs, or information on crime prevention or personal safety issues, or maybe just

BARTON print

for all your printing requirements

- 07799 411525 -

General Printing
Letterheads
Business Cards
Compliment Slips
NCR Pads & Sets
Flyers & Leaflets

1 Turnpike Road, Connor Downs
Hayle, TR27 5DT

to talk.

We will be holding sessions at:
**Hayle Community Centre,
Carew House, Queensway** on the
second Wednesday of each month
11am - 2pm.



HAYLE TWINNING ASSOCIATION

Our twin town of Pordic is on the Cote d'Armor in Brittany, it's about 73 miles from Roscoff. It is a lovely town, smaller than Hayle with a population of about 5,500. Like Hayle it is near the sea and ideally situated for traveling to other places of interest. The Twinning Association was formed in 1995 and meets on the second Tuesday of the month 7pm at



FITNESS CLASSES IN HAYLE

AT THE PASSMORE EDWARDS INSTITUTE

- Monday... Step Class*
- Wed... Tums & Bums*
(Gentle exercise for all shapes & sizes!)
- Fri.. Strength & Flexibility*

All Classes Start at 6.30pm

Cost £2.50 per session

Info: Sylvia 757560

the Passmore Edwards Institute. Membership fees are: single £3.00, couple £5.00, family £7.00.

This year's activities are the AGM 10th February at the Passmore Edwards, open to anyone but only members can vote.

On February 17th it is our annual early year get together meal at the Tyringham Arms. (If you wish to go please call me A.S.A.P.) This gives us all a chance to meet up again and talk about the good visits we have had.

In May/ June we welcome and host our friends from Pordic and arrange a programme for their visit. In September we visit Pordic.

Through the year we hold raffles, cake stalls, sales in church halls, auction, and play boules every two weeks.

We are encouraging the schools to get involved. In the past organizations that have been involved are Hayle R.F.C., Hayle Football Club, Hayle Road Runners, Hayle Town Band, and Hayle Male Voice Choir. Penpol School Choir and Bodriggy School have visited Pordic, the pupils sang, danced and played musical instruments.

Hayle Community School have once again opened their doors to our twinning members and the public, be it a parent or anyone wanting to further their knowledge of French, Spanish, Italian and for the rest of this term Japanese. This is on Tuesday evenings between 5 and 7, the cost is only £1 per hour. For those confident enough conversational French can be arranged, the cost is only £1 per half-hour. The remaining dates are Feb 10th, 17th, 24th, March 2nd, 9th, 16th, and 23rd. All you have to do is drop in between the hours given, or you can ring and book yourself a session through the receptionist tel: 01736 753009.

This year our visitors will probably be coming over in May or June so come along, join us and help to entertain them and give them a good Cornish welcome.

Our return visit will probably be on Saturday September 10th until Monday 13th.

We encourage our members to invite family and friends to join us, for more information contact

Maurice Trathen on 01736 753520

Intelligent? His train of thought never left the depot.

ENABLE IN CORNWALL LTD

Are you aged 16 to 64?

Is physical disability or sensory impairment getting in your way?

ENABLE really can help.

ENABLE provides access to opportunities in Cornwall for education, training and the work environment for people with physical disabilities or sensory impairment.

Attitudes towards the roles that people with physical disabilities or sensory impairment have to play are changing. ENABLE is at the forefront of this change. ENABLE, in partnership with voluntary supporters, education establishments and training organisations, offers information and opportunities to enable people with physical disabilities or sensory impairment:

- To access work or training op-

portunities.

- To access education.
- To use their skills as volunteers.

ENABLE IN CORNWALL LTD.

Unit 1 Bodmin Business Centre

Harleigh Road, Bodmin,

Cornwall PL31 1AH

Tel/Fax: 01208 77711

Minicom: 01208 77713

Email: enableincornwall@aol.com

Restaurant review

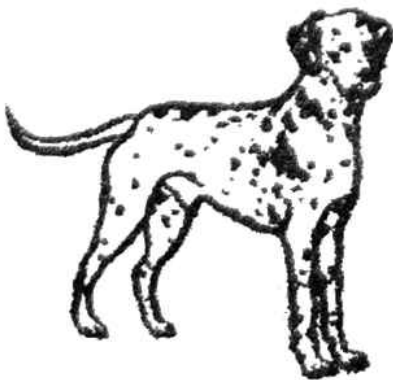
We thought in the interests of our readers we would go and check out the new Chinese restaurant that has just opened, Eastern Empire. (The fact it was a cold January Sunday with no food in the fridge had nothing to do with our decision!)

The starter of spare ribs (£5) was too much for one person, so the waiter

DYLAN'S CAFÉ

6-7 Foundry Square, Hayle, Cornwall

Tel. 754809



All Day Breakfast
Fresh Cooked Lunches
Cream Teas
Vegetarian Menu
Children's Menu

Proprietors Alan & Rosemary Cummings

NEIL WADE
MOTOR ENGINEER
CENTRAL GARAGE
10A HAYLE TERRACE
HAYLE

M.O.T. TESTING STATION
DIESELS & CATALYSTS
TESTED*
SERVICING*REPAIRS*
WHEEL BALANCING*
EXHAUSTS*TRACKING*
TYRES*BATTERIES

HOME: 01209 610651
MOBILE: 07990 981546
WORK: 01736 756512



gave us a second plate. This and the main courses (£7) were delicious and very generous portions, so much that we had no room for a dessert. The service was very good too, and lovely Chinese music.

Jeff & Sarah Turk

The Angarrack Smelting House Hayle and Its History.

Continued from last issue...

In 1839 James Tear of Preston, a powerful advocate of Teetotalism arrived in Cornwall to further its cause, which he did with great success. When he visited Hayle, his sermons and addresses were eagerly listened to.

Francis Harvey became one of the staunch supporters of total abstinence. It is strange that I came across his name in the Tiths Apportionment of 1839 listed as the Lessee of the Angarrack Inn!! Francis Harvey was a draper by trade with a shop in Copperhouse (now a fish & chip shop opposite the Church Hall.) He was a very versatile man as by 1840 he had become the manager of the Angarrack Smelting House.

He was a regular punter at cock fighting which took place in the courtyard of the Inn on Sundays. The walls of the enclosure are still there, flanked by the old cottages on the outside of the Inn.

It is recorded that at one of the temperance meetings Francis Harvey was demonstrating the dangers of strong drink. He produced two glasses. In one he poured pure clean water. In the other whisky. He then produced a tin box of worms. He said "watch closely, my friends." He took out a worm and placed it in the glass of water, it swam around quite happily. He then took another worm and dropped it in the glass containing whisky. It went straight to the bottom dead. "Now my friends, what do you deduce from that?" One of the furnace men got up and said "If you've got worms Mister, drink whisky." The meeting broke up with great merriment.

The conduct of the Tin Trade was for centuries controlled by Stannery

Law and up to 1838 a tax had to be paid on the white tin produced by the melting and blowing houses before it could be lawfully sold. Smelters were fined quite heavily. In some cases all their quarter produced was confiscated. But some still tried to evade the law, no doubt knowing the Cornish some got away with it!

The consequences were onerous as all the tin smelted had to be taken once a quarter – in earlier times half yearly, to one of the coinage towns which by 1833 were Calstock, Liskeard, Truro, St Austell, Helston, Hayle and Penzance. At the coinage, a corner or chip was chiselled from each block or ingot of tin. This was assayed, the block weighed and tax

assessed. When paid the blocks were stamped with the Duchy seal and could then be removed and disposed of. There was a great demand for Cornish tin in the eighteenth century, most of the Angarrack tin, for its purity, was purchased by the manufacturers of pewter beer mugs, both in Cornwall and further afield, particularly London and the Royal Household.

Towards the end of the eighteenth century the demand for tin declined with the growth of the earthenware industry, the products of which were ousting those of the pewterers.

To offset this decline in the home market, arrangements were made in 1789 to export through the East



**01736
753277**

2 Station Hill
Hayle
Cornwall TR27 4NG

**Oil and
Solid
Fuel**



**Central Heating
Plumbing and
Bathroom
Specialists**



O'DELL SIGNS

OF ALL TYPES
Signwriting, Perspex
Plastic, Engraved,
Magnetic, Posters,
Illuminated signs,
COMPUTER CUT
VINYL LETTERING
for Vehicles & Signs

Embroidery
for
Businesses & Clubs

COLOUR COPYING

HAYLE 01736 753656

1, Turnpike Road, Connor Downs.

India Company, large quantities of tin to China where it was used in the form of tinfoil at religious ceremonies. The advantage of this outlet for a large proportion of Cornish tin was taken for about twentyfive years, until home demand was again stimulated by the requirements of the new tin plate industry. As white tin could only be sold once a quarter, this was a considerable disadvantage to the tinner who brought his tin in for smelting and would have to wait weeks for his money. When a smelter received black tin he gave a receipt for it. This showed the weight of black tin and the amount of white tin he undertook to deliver in return for the next coinage.

To be continued...

*Researched by Charles L. Crowle
A.M.I.Mech.E. F.I.Diag.E.*

HAYLE PUMP

SUBSCRIPTION SERVICE

For those readers who would like a Pump sent to family or friends elsewhere in the UK, or local people unable to get into Hayle to collect a copy, we operate a postal subscription service. Simply send us the delivery name and address CLEARLY PRINTED, together with £2.20 to cover the cost of stamps and envelopes, and we will send a year's issues (6 copies) of the Pump as soon as it is published. (UK addresses only – please make cheques/postal orders payable to "Hayle Pump Newsletter".)

HENERY

*Once I had a little pig
His name was Henerly
And every time I visited
He used to come to me
He'd nuzzle me with his wet snout
And snort and grunt with pleasure
My memories of that sweet pig
I know I'll always treasure
Now everytime I dine I muse
As I pick up my fork
How sweet my Henry tasted
Transmuted into Pork.*

Nicolette A Bodilly

This newsletter has been assisted by a grant from the Neighbourhood Renewal Unit.



INDEX OF ADVERTISERS

All Aerials...33
 Angove Sports...31*
 Barton Print...41
 Biggleston's...30 *
 Brookvale... 18
 Button, Des...3
 C E C (Electrical)...19
 Colin's Mkt Garden...40*
 Cranford Hse B & B...27
 C Spray...39
 Digitech Services...5
 Dylan's Café...43 *
 D.W. Hire...15
 Ellis, Derek...48
 Farm Shop...17*
 Fernleigh B & B...14
 Fitness Classes...42

Footsteps... 19 *
 Furniture W'house...38
 Gardener, Maurice...3
 Hayes, Roy...7
 Hayle Holistic Clinic..47*
 Hayle Healthfoods...10 *
 Hayle Joinery...11
 Hello Gorgeous...6
 J. Jackson...22
 J C Electrical...8
 Jolly Bodger...4 *
 Keast, H.L...12 *
 Lello, Terry...29
 Mad Hatter...48*
 Moyse, David...34 *
 Nurserytime...28
 O'Dells...46

Orchard, A.P...32
 Penpol Garage...20
 Philp's Pasties...16
 Post Office...25*
 Roadcraft...26
 Sewing Service...6
 Singer Sewing Centre...23
 Slowfitt & Auto...9*
 Smithy's Hire...13
 Smuggler's...37
 Spar Shop...36*
 Spit & Polish...37
 Trevassack Nurseries..21 *
 Wade, Neil...44
 Weight Loss...35
 Wick's Heating...45
 Winn, W.J...29

*You can pick up a copy of the Pump at those advertisers marked with a * also at Hayle Library, Day Care Centre, Community Centre, Bodriggy Health Centre, Copperhouse P.O., Forbuoys, St. Erth P.O., Connor Downs P.O., and many other place in Hayle.*



Hayle Holistic Beauty Clinic

FOR INDIVIDUALISED BEAUTY AND
 SPECIALISED COSMETIC TREATMENT BY
 AWARD WINNING "RAMA"

All beauty treatments by award winning therapist.
 Specialised cosmetic treatments.
 Collagen, Botox Injections, Thread Vein treatments.
 Gift Vouchers . Free Consultation.
 Special rates for Senior Citizens & School Children.

01736
 755656

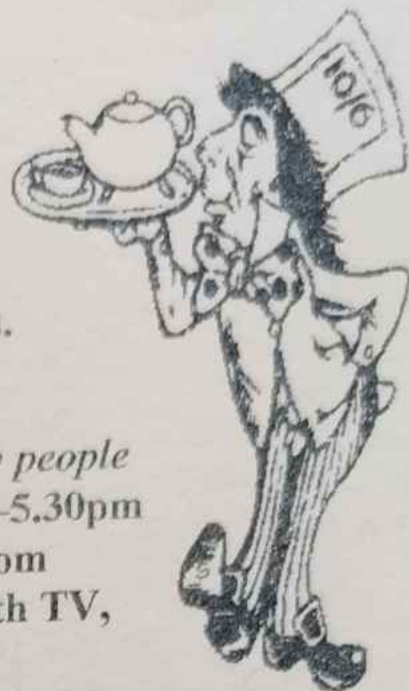
The Mad Hatter

Tearooms and Bed & Breakfast

Breakfasts, Lunches, Snacks,
Cream Teas & Home-made Cakes.
Tea Garden. Dogs Welcome



Homely atmosphere with friendly people
Open all year Mon—Sat. 10am—5.30pm
Double, Twin & Family Room
Overlooking Hayle Estuary with TV,
Tea & Coffee Facilities.



73, Fore Street, Copperhouse, Hayle TR27 4DX
Telephone/ Facsimile 01736 754241



**DEREK
ELLIS
CARPENTRY**

Carpentry

Decking

*D. Ellis
Carpenter*

Kitchens

Building

A Friendly and Trustworthy Service

*73 Fore Street
Hayle
Cornwall TR27 4DX*

*Telephone: 01736 754241
Mobile: 07775 614158*