

HAYLE PUMP NEWSLETTER

Circulation 2,500

FREE

Copy - please take one (made possible thanks to our advertisers)



What a great band! At Torquay on Sunday 28th March Hayle Town Band came 2nd out of 19, beating other very well known bands in the process. The 3rd section contest was between bands from all over the West of England. Thanks must go to musical director Derek Johnston, one of the best tutors around.

Hayle Pump Newsletter
Unit 14, Pratt's Market, Chapel Terrace
Hayle TR27 4AB

email: haylepump@theturks.fsnet.co.uk

**Closing date for
next issue :
20th May 2004**

Advertising Rates

Full page (130 x 190mm) £35.00
Half page (130 x 95mm) £20.00
Quarter page (63 x 95mm) £11.00
Eighth page (63 x 42mm) £6.00

If you wish to advertise in the Pump please contact Sarah Turk at the address below.

Editorial Team Members

Tim Appleton

N.A. Bodilly

Goudie Charles (Editor)

01736 757351

Mel Jones

78 Hayle Terrace

Hayle TR27 4BT

01736 757560

Jeremy Joslin, Bajjer Arts

10 Foundry Hill

Hayle TR27 4HW

01736 756756

Jeff & Sarah Turk

35 Penpol Terrace

Hayle TR27 4BQ

01736 752319

Roger Winterburn (Secretary)

01736 756393

You can leave your news, letters, notices etc. at our unit in the market, or with any of the team. You can also use any of our drop-off points:

At Foundry

Biggleston's Hardware

Colin's Market Garden

Hayle Electronics

At Copperhouse:

Jolly Bodger

David Moyse Clothing

The Hayle Pump would like to remind readers that items, or articles and Public Notices are accepted as points of view and are not necessarily the opinion of the Newsletter Team. Correspondents are reminded that all material submitted must be signed with their name and address, and if possible, telephone number for validation. This will not be printed if you don't wish it to be. We reserve the right to refuse or edit items sent to us.

THREE NEW BUSINESSES START IN HAYLE

Tony Donaldson has started a new same day courier service in Hayle. Urgent letters, documents and parcels will be collected and delivered the same day.

He has had 10 years experience as a courier, and is an independent operator so his prices are very competitive with no VAT.

Local collections will be within the hour wherever possible, and he can get your letters etc. to any part of mainland U.K.

For further information give him a call.

In December last year, Samantha George opened S.V.G.Hair & Beauty Salon in Foundry Square in the former hairdressers known as Headlines. The premises have been totally refurbished, and Samantha offers a full range of treatments in very attractive surroundings, from a simple shampoo and set up to woven hi/low lights or hair extensions. You can also have a full range of beauty treatments including massage, manicure and pedicures.

A new picture framing business and art gallery is to open soon in the rear section of the top floor of Pratts Market at Chapel Terrace. "H.D. Framing" will specialise in framing exhibition work for artists as well as be-

Tony Express



Parcels & mail to
your customers
the same day

Tel: 01736 759493
Mobile: 0771 137 1488

spoke framing for the general public. The proprietor Heather Dyer, whose husband Paul runs the Copperhouse Gallery at the other end of Hayle, hopes to be open by Easter. As well as picture framing and a gallery, she also wants to develop an arts centre incorporating exhibition space and studios for rent to working artists.

The Pump team would like to wish these three businesses all the very best for the future.

Hair



Beauty

Tel: 01736 754048

e.mail: svgsalon@aol.com

5A FOUNDRY SQUARE
HAYLE
CORNWALL
TR27 4AE

JOLLY BODGER WAREHOUSE

**77 FORE ST
HAYLE
01736 752091**



**WE STOCK:
BLACKFRIARS
PAINTS &
PRODUCTS.
FLO GAS
CAMPING GAZ..
HARDWARE,
GIFTS & SOUVENIRS
AND MUCH MUCH MORE!
*HOUSE & CAR KEYS CUT***

ST ERTH FEAST

The **biggest Duck Race** in Cornwall is once again being held on the river at St Erth, on Good Friday 9th April. The race will be opened this year by Andrew George MP and it will be started at Trewinnard Mill Bridge by Michael Eddy of St Erth.

The Duck Race will kick off at 3pm and continue until 4.30pm approx. There will be about £90 in winnings to give away and a great deal of fun for all, so do come along and enjoy the day. The winner will receive a duck trophy to keep for 1 year! Bur-

gers, hot dogs, bacon baps and cold drinks will be on sale along the river bank, together with raffles, tombola stall, lucky bunny dip and a tote board, so come and have a flutter on the race. **Enjoy.**

For the first time last year

The Great Egg Hunt was held in the gardens of Mill Cottage, Little Mill Lane, St Erth. It proved such a success for children and adults alike that this is now an annual event. Admission £1, follow the clues and find the Treasure Chest with Easter Eggs for everyone. There will be sponge throwing, painting competitions and a lucky bunny dip to keep the kids amused before the Duck Race. Refreshments will also be on sale. Everyone welcome, 12noon - 2pm.

Please come and support the events and have a really fun day for all the family. See you there!

Dennis Williams, Chairman 01736 741188.

**Hayle Ladies Choir
20th Anniversary
Concert
Sunday May 9th at
7.45pm
Hayle Methodist Church
Mount Pleasant
Hayle**

Hayle Decorative Lighting News

We had a Quiz Night on Friday Feb. 27th and considering the awful weather conditions of hail sleet and snow, a lot of people turned out and we raised the grand sum of £116.00. Thanks to everyone who pitched up, your support is much appreciated and many thanks as usual to David Jones the quizmaster and Jeremy Joslin for reading out the questions. We would also like to thank Bruce and Rosalind from the Farm Shop on Penpol Terrace for donating a lovely prize for the raffle. **Our next Quiz will be 30th April.** We took down the rope lights across Copperhouse at the beginning of

March, and strung up bunting to cheer the town up, and which hopefully will stay there for the summer. The Lions gave us some money towards the purchase of the bunting and we thank them for that.

Hopefully we will be having our Raft Race in August, and spaces for stalls are already being booked (this can be done through Mike Matthews of Matthews & Co Estate Agents).

On March 17th we held our A.G.M. at Hayle Bowl, and I am pleased to say that the committee remains unchanged, as all serving members were re-elected. I am particularly delighted that Cllr Shirley Oliver, despite her many commitments is still our President, her contributions have been greatly appreciated.

I would like to thank St. Ives Bay

hello
gorgeous
Funky Fashion for Girls and Guys

Tel: (01736) 759664

71a Fore street
Hayle,
TR27 4DX

Stocking Bench Guys and girls, Chilli Pepper Gorgeous Couture,
Lipsy, Get Cutie, Hullabaloo, Kinky, Slut,
Starfish and scholl funky fashion line
Accessories including
bags, belts and jewellery.

gorgeous

Sewing Service

Hems shortened on Dresses, Skirts, Coats,
Trousers and Jeans.

Curtains made up with customer's own
material up to 60" length (1.5m)

Reasonable Charges

Tel: 01736 753281

Holiday Village for their invaluable assistance throughout the year. The loan of their van was a huge help, and I would like to thank Richard Quick as well.

We will be fund-raising throughout the year as we have our thoughts firmly fixed on a stunning new set-piece which costs in the region of £1,000 but we think it will be a superb addition to our display. This year we

are having the switch-on on Saturday 27th November at 4.30pm. There are reasons for the change, one of them being that we can set the timers to come on at 4.30pm from the outset, instead of having to re-set them the next day from 7.00pm at switch-on time, as we have had to do so far. Now we have so many displays, stretching from Lidl's to Tempest's this is quite a job, as you can imagine. Also you, the people for whom this is all about, get the lights on for an extra week.

R. Horwell, Chairman. Tel: 752597

Diary dates

Hayle Decorative Light Quiz

Hayle Bowl 7.30pm April 30th



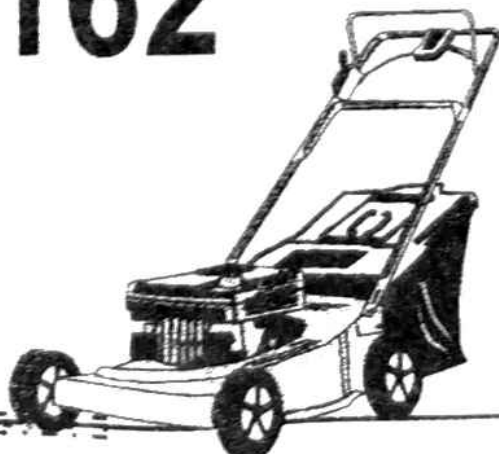
"If it's BLUNT it's JUNK!"

PROSHARP..... YOUR LOCAL

SHARPENING SERVICE & SAW DOCTOR
FOR ALL GARDEN, HOUSEHOLD & WORKSHOP ITEMS

IN HAYLE 756162

Weekly collections from
Bigglestons Hardware &
The Jolly Bodger





YOU DONT LOOK
LIKE A DART
PLAYER!

FEELING FLUSH?

*" 'Twas on a Tuesday morning
The plumber came to call
The cistern wasn't working
We'd got no flush at all"
(with acknowledgement to Flanders & Swann)*

Our toilet is a lovely old ceramic one. Unfortunately the cistern suddenly called time, the wire holding the plunger snapped and the flushing thingy disappeared somewhere within the unit's innards. Two hours of dangling a hook in an attempt to fish out the mechanism came to no avail, and the dreaded word "plumber" came to

R	ROY
H	HAYES
G	GLASS
<p>Rear of Central Garage Hayle Tel/fax: 01736 754023 Mobile: 07880 530795 Open Mon -Fri 9-12 1.30-4.30 Sat 9-12</p>	

mind. In the past I have had very satisfactory dealings with Mr Jim Wicks, who advertised in the Pump, but when I phoned him he told me had retired, and was unable to recommend an alternative. Now I had to plunge into the world of completely unknown, untried plumbers. I probably read the wrong papers, but this brings about a vision of a squillion pound call-out charge, accompanied eventually by the arrival of a white van from which emerges a bluff man in a large hat, possibly related to Roy Rogers or Buffalo Bill. He looks at the cistern and gives the obligatory whistled sharp intake of breath. "Blimey, governor, where'd you get this, the ark? Tell you what, I've got a nice plastic modern one in the van, cost you a monkey, plus a pony for fitting, and the call-out charge, of



Moving House?

Whether buying, selling or re-mortgaging

For a FREE estimate

Phone Julie Blewett on

01736 752424

Or call into our offices at
75 Fore Street
Hayle

course." Humble apologies if I do a grave disservice to a most noble profession, but seriously, we're extremely attached, metaphorically speaking, to our present cistern and wanted if possible to keep it.

Fortunately I mentioned my predicament to a friend who had had a similar problem with an antique tap fitting. He put me in touch with the gentleman who solved his problem, namely Harold Lucas, who promptly appeared, completely understood our sentimental fondness for the old cistern and was perfectly happy to mend it. He also carried out some general renovations, and it is now working better than ever. Even better, the charge was extremely reasonable.

Mr Lucas tells me he is available for small plumbing jobs and repairs, and he can be reached on 01736 756395.

Taurufax



J C ELECTRICAL



Your complete 24hr Electrical Service

City & Guilds Qualified
Tests to 16th Edition BS7671

Rewires, New Build, Lighting, Extra Sockets,
Showers, Heating

Prompt Reliable Service
All Work Guaranteed

Free Estimates

Hayle 01736 754543
Mobile 07739 577 549





Lend a Hand

ROTARY 'LEND A HAND' AROUND THE WORLD

This year's Rotary slogan is 'Lend a Hand', and to demonstrate how Rotary is achieving this worldwide, here are two examples:

Rotary's Polio Plus Programme was established in 1985 at the 40th celebrations of the founding of the United Nations, when Rotary electrified the global health community by announcing its commitment to provide 6 doses of oral vaccine over 5 years to 100 million newborn children worldwide at a cost of 125 million dollars. In fact over 247 million dollars were raised at the time, and suddenly provision of vaccine to all ages became the far larger target. National Immunisation Days became part of Rotary's vocabulary, and in 1988, 166 nations committed themselves to eradicate polio – in 1985 there had been 350,000 cases a year in 125 countries, in 2002, 1918 cases in 7 countries, and in 2003, 383 cases in 10 countries, 4 of which are regarded as "importation" – a 99% reduction in the number of cases worldwide. Total eradication is now believed to be feasible, and it has become one of the



Family Law Specialists

Divorce & Separation
Financial & Property Disputes
Children
Domestic Violence Injunctions

*For a FREE initial
interview*

Call Antony Vingoe on
01736 752424

Solicitors Family Law Assoc. Accredited Specialist
Law Society Family Panel Member

main targets which Rotary hopes to celebrate in 2005, its Centenary year. Despite a 275 million dollar shortfall in 2002/3, Rotarians answered the call and an instant 80 million dollars was pledged, and so the "Eradication Campaign" became Rotary's priority for the following 3 years. Here in the UK alone the Polio Plus target of 4.5 million dollars has been well exceeded with 182 clubs still to contribute and various events yet to take place. To date 111 million dollars have been raised worldwide to meet the shortfall, and with only 383 cases of polio remaining, Rotary is committed to fulfil its promise to the children of the world.

However, this is not the only Rotary success story. One which has links

closer to home is 'ShelterBox' – an initiative of the Helston-Lizard Rotary Club. Each box contains a tent, sleeping bags, tools, light and utensils etc. for 10 people, providing instant warmth and shelter, giving relief to families suffering the hardships resulting from a disaster. A recent example of ShelterBox in action followed the major earthquake which hit the Iranian city of Bam on Boxing Day last year, when more than 30,000 people were killed, and 100,000 more were left homeless. 110 ShelterBoxes were flown out from Manston in Kent the following day, and were possibly the first shelters to arrive in Iran. A further 110 boxes were then shipped later, together with over 300 Aquaboxes (another Rotary intitia-

tive) which also gave around 1.5 million litres of water purification capacity. Although ShelterBoxes cost £460 each, to date donations have been received for over 1600 boxes. So far 1300 boxes have been despatched to various disaster areas worldwide – 4 of which have been in the last 12 months – the most recent as a response to the earthquake in Gujarat, India.

How can you 'lend a hand'? Why not find out more about Rotary, and our club in Hayle, by contacting Adrian Sumner on 01736 794147 (www.hayle-rotary.org.uk), or if you would like further information about ShelterBox, tel. 01326 572252 (www.shelterbox.org).

Adrian Sumner

NEW RANGE OF ECOMATIC SPECTACLES

**LIGHT REACTIVE LENSES
RANGE OF STYLISH FRAMES**

**SINGLE VISION FROM £85.00 COMPLETE
VARIFOCALS FROM £99.00 COMPLETE**

F.L. KEAST F.B.D.O.

DISPENSING OPTICIANS

18 COMMERCIAL ROAD HAYLE TEL. 753145

&

21 ALVERTON STREET PENZANCE TEL. 366106



KIND OF CORNISH



The Cornwall International Male Voice Choir Festival took place between May 1st and 5th last year and was the first specialised international male choir festival to be held in Britain. The Festival aimed to bring male voice choirs and ensembles from outside Cornwall to join with Cornish choirs in a spirit of musical friendship and song. A CD has been released featuring selected highlights from the event, and as might be expected, features some very high quality male voice singing. Nine of the tracks feature Cornish choirs, and they more than hold their own with competition which includes choirs from Hungary, Slovenia, Estonia, Eire, The Faroe Islands, and even (!) England. Highlights include "What would I do without my music" by the Mousehole Male Voice Choir, "The River of Life" by the Holman-Climax Male Voice Choir, and a very moving rendition of Kodaly's "Huzst" by the Bela Bartok Male Choir from Hungary. The CD is rounded off with a rousing interpretation of Beethoven's "Song of Joy" by the Cornwall International Festival Male Chorus with St Keverne Youth Band. The album is intended to be an example of the special flavour and atmosphere of the first Cornwall International Male Voice Choir Festival, and as such is highly recommended. (79 mins, £13.50.)

My second offering is West Country rather than Cornish, but one which will find accord with many Cornish



It's "Time tolose weight!!"

**New meeting opens
Monday 19 April
Passmore Edwards Institute
Commercial Road
10.00am**

**For further information contact:
Sylvia (01736) 755360**

folk, namely a tribute to the Royal National Lifeboat Institution by the Band of HM Royal Marines, Plymouth. The apt title is "For Those in Peril on the Sea" and the title track is a most moving performance. Other highlights include "Rhapsody on Sea Shanties", Vaughan Williams's "Sea Songs", and in a lighter vein, "A Caribbean Fantasy". This is a superb CD by an excellent band. (67 mins. £12.50.)

**Both CDs, and many Cornish musical items, can be obtained from:-
West Penwith Music
Union Street
Penzance (Tel. 01736 364440)
Goudie Charles**

**Hayle Tennis Club Quiz Night
Hayle Bowl 7.30pm April 23rd**

SHANGRI-LA SECONDHAND

Well it seems for the moment all I am allowed is a few choice glimpses of Shangri-La as viewed from Patrick's boat! He left at the end of January and is now well settled in the Bodrum boatyard, meeting some really interesting people and enjoying the amazing weather which is generally warm enough for shorts and T shirt and even when there are storm force winds and sandstorms they are short-lived and spectacular. Whilst we were freezing day after day I did spare a little bit of sympathy for him as they had two zero degree days and he had given all his warm clothes to the charity shops before he left so suffered quite a lot, especially at night. He has even braved the barber, brave being the operative

word as the shaving procedure involves being slapped in the face with a burning meths swab! Must satisfy some masochistic desire I guess as Bodrum abounds with barbers.

Women tend to seek gentler ways to maximise their beauty so I was delighted to get feedback from customers who have been using the Herbatint hair dye products that they do an excellent job in covering, not washing out and keeping your hair in good condition. They do not have that ghastly ammonia smell either. To quote Brianna "I was absolutely delighted!". Thank you for the feedback, keep it coming.

For those planning an early escape to the sunshine and wanting to see the back of those few remaining extra winter pounds we have a good selection of helpful products from the fat

HAYLE HEALTHFOODS

www.haylehealthfoods.info

Quality Natural & Organic Foods
Own Label & Branded Supplements
Herbal & Homeopathic Remedies
Flower Essences * Books
Subliminal CDs * Sports Products
Toiletries * Household Goods
Sprouters & Organic Seed Mixes

Friendly Welcome & Willing Assistance *Just Ask for Details*

LOCAL SUPPLIERS USED AMPLER PARKING BEHIND SHOP
WHENEVER POSSIBLE SPECIAL ORDERS WELCOME

3 East Quay,
Hayle TR27 4BJ
Tel 01736 755095

*Want to Change
Your Life?
INNER TALK CDs
can help you Move
Forward and Achieve
your Ambitions.
Just Ask for Details*

SMITHY'S

TOOL HIRE & SALES

HIRE TOOLS FOR TRADE & DIY

UNIT N ST. EARTH INDUSTRIAL ESTATE

(THE OLD CREAMERY, A30 HAYLE - PENZANCE ROUNDABOUT)

**YOUR LOCAL INDEPENDENT TOOL HIRE SHOP
OFFERING YOU THE BEST IN HIRE RATES, BACKED UP
BY A SERVICE - SECOND TO NONE.**

- * Mini-Digger
- * Mixers
- * Compactors
- * Trestles
- * Shredders
- * Power Barrow
- * Breakers
- * Stihl Saws
- * Acrow Props
- * Alloy Towers
- * Roof Ladders
- * Floor Sanders
- * Work Top Jigs
- * Petrol Strimmers /
Hedgetrimmers
- * Rotavators
- * Carpet Cleaners
- * Pressure Washers
- * Steam Wallpaper
Strippers
- * Block Splitters

AND LOTS MORE!

RING US NOW ON

01736 75 72 77

'Fernleigh'



**BED & BREAKFAST
EN SUITE
COLOUR TV
TEA & COFFEE
NON SMOKING
ALL ROOMS**

**26 COMMERCIAL RD
HAYLE
01736 752166**

burning CLA used by sportspeople and slimmers alike, to the cider vinegar approach in tablets and subliminal weight loss CDs. Being entirely idle I am devoted to the subliminal CDs which require nothing more than you actually play them and read the words occasionally.

Since I started the shop three years ago I have been pleased to observe that men seem to be taking a much more active interest in enhancing their health and vitality. Along with all the immune supporting, joint protection and specific complaint products which are unisex, there are many formulae designed especially for men; I am delighted to do research and order any particular items which may not be currently on the shelf.

The signs of advancing spring are promising and I think most people

enjoy a great lift of spirits as the beautiful brave bright flowers start to show their faces in sheltered corners and new lambs embody joyous energy prinking in the fields. For those who are still labouring under SAD, which can be at its very worst at the end of the long dark days, there are plenty of herbal melodies which lift the mood swiftly and effectively. Best known is St Johns Wort which works well for many; less well known but also a fabulous mood booster is Rhodiola Rosea. Like most herbal remedies they both address a variety of symptoms so it is worth checking out which is most suitable to your own situation. Flower essences generally give instant relief, can be used on a long term basis and alongside absolutely anything else.

The search for a new bread supplier, necessitated by Blue Mango ceasing to produce for the trade, is hotting up and I have two favourites in the frame right now. If you're interested in organic breads please let me know as by the time this is printed it should be available...

With love and light to all.

Felicity, Hayle Healthfoods

WANTED – CHESS PARTNER

**IS THERE ANYONE WHO WOULD
BE INTERESTED IN PLAYING AN
OCCASIONAL GAME OF CHESS
WITH AN ALERT 91 YEAR OLD
MAN LIVING IN HAYLE TERRACE?
INTERMEDIATE LEVEL.**

PHONE 01736 757560

ASK FOR ERIC

Married Couple

Jill How you sittin' in the dark?

Jack We got a power cut.

Jill Don't be daft the bus is just gone past all lit up.

Jack Then the bulb must be gone, you'd better put one in. I'm going out for a pint.

Jill Don't you get lit up. You're daft enough when sober.

Jack I got to go, I'm in the dart team.

Jill Hope you do better than you did in the pub quiz.

Jack What you mean? I got the first three questions right.

Jill So did everyone else. They were your name, address and telephone number.

Jack You don't understand, they

questions were some hard.

Jill Hard you say, you didn't know where Falmouth is.

Jack I told them before we started that I didn't know anything about foreign parts.

Jill Dear, dear, when they asked who built the pyramids, you said Macsalvors.

Jack Well, I'm not a mason, so how could I know that?

Jill I'm glad you didn't take me. Come to think about it, when was the last time you took me out?

Jack I took you down the allotment last week.

Jill That was for me to carry the tatties home.

Jack Be fair, I had to carry the trowel home to clean it.

Jill You didn't clean it, you put

More than just



Bouncy Castles!

fun in all weathers

*Corporate events,
local fairs and
fetes catered for*

Sizes to fit most gardens, Church and School Halls, Scout Headquarters, Forecourts etc.

Part, Full day and evening hire available

Delivered, collected and erected free of charge within 4 miles of base

Competitive rates offered!!!

Ring Today...

01736 753133 mob. 07780 673 413

it in with the dishes for me to clean.

Jack Here, don't forget, I mended your broom yesterday.

Jill Huh, do you really think blue tack and four drawing pins would keep the handle on?

Jack Oh I'm goin', nag, nag, nag.

Jill That's right, go down the pub and do what you're best at.

Jack What's that?

Jill Bending your elbow.

Jack Trust a woman to have the last word!

Dorothy Cook

What do you call an Innuite cow?

An Eski-moo.

HAYLE CHOIR SEEKS MALE VOICES

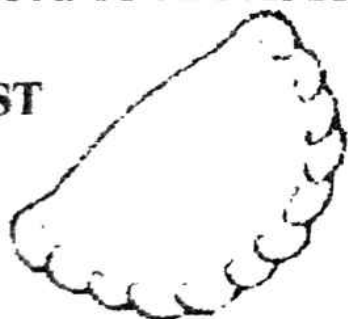
Hayle Male Voice Choir enjoyed another successful year in 2003. The highlight was the trip to Wales, including a concert at Pembroke Castle with the Royal Marines Band. Choir spokesman Harry Blakely said "Last year was an up and down affair but mainly up. The downs were the loss of some very dear friends. But our singing numbers are up, our moral is up, our standards are up and our future is looking up."

Meanwhile the choir continues to welcome new members. Any man over 16 and under 95 who would like to 'have a go' should come to Hayle Methodist Chapel Hall at 7.30pm on any Monday evening.

PHILP'S

FAMOUS PASTIES

EST



1958

BAKING 7 DAYS A WEEK
FOR THE GREAT TASTE OF
CORNWALL'S
PREMIER PASTY MAKERS
WITH OVER 40 YEARS
EXPERIENCE
VISIT US NOW
AT OUR SHOPS AT-



**1, EAST QUAY,
HAYLE
01736 - 755661**



**1, FOUNDRY HILL,
HAYLE
01736 - 753302**



**MARKET PLACE,
MARAZION
01736 - 710332**



**THE SQUARE,
PRAZE & BEEBLE
01209 - 831360**

THE VIEW FROM THE STEEPLE

Hello again, my friends! Since my last visit, we have had two concerts, two art exhibitions, a feast day and a mini blizzard!

At the end of January the winter concert season started with a visit from the Loveny Male Voice Choir and our old friend David Prowse, who had us laughing our heads off with his witty poems. These joint concerts staged with Hayle and District Lions Club at St Elwyn's are now in their 6th year and have built up a loyal following since 1999.

On February 1st, Penwith Deanery Choir paid us an all too rare visit singing for the evening Candlemas service. They may be a small choir, but they make very beautiful music, and because they practice at St Elwyn's I can enjoy my own private concerts up there in the comfort of my belfry every Monday evening.

St Elwyn's celebrated its Feast Day On February 23rd and we all began to turn our thoughts towards the coming of spring when Mother Nature decided to play tricks on us and sent us an arctic blast! The east wind whistled around the steeple and large white snowflakes blotted out the view, leaving the hill tops shrouded in white snowdrifts. The children thought it was great, even though it was quite short-lived at lower levels around the coast. Up on the moors they got a couple of days off school.

The Farm Shop **31 Penpol Terrace** **Hayle**

Open 6 days a
week 8am - 5pm

For all your local
produce, fruit,
vegetables,
plants & flowers,
free range eggs,
local honey,
and lots more.

The second concert fell on leap year's day, featuring the Holman-Climax Male Voice Choir with their special guest, the superb soprano Valerie Wallace, both paying us a very welcome return visit.

February also marked the start of St Elwyn's season of art exhibitions with the first solo show by Bob Deve-reux. Bob has previously exhibited in our summer exhibition and with his friends staged music and poetry evenings as part of our Heritage Festival programme. Bob's colourful abstracts, entitled collectively "Making Space for the Imagination", were a complete contrast to our second artist David Dyer, who was also making his solo debut, with his wonderfully evocative seascapes. David, too, has



Brookvale

Residential Care Home for the Elderly

Family run home, by the resident proprietors Mr & Mrs Broadbridge & Mrs Pleasants RGN, which prides itself on a personal and caring environment. Situated in the centre of Hayle close to all amenities.

Private and DSS residents welcome whether short or long stay. Fully registered with the CCC, and a member of the Cornwall Care Homes Association.

- all necessary care & assistance supplied
- large garden and patios
- two lounges & spacious bedrooms
- full 24 hour care & central heating
- weekly hairdresser & chiropodist
- domiciliary services, day care & M on W

6 Commercial Road

Hayle, Cornwall TR27 4DG

Telephone: **01736 753608**

previously supported the summer art exhibition.

The church calendar has now entered Lent, having celebrated Shrove Tuesday and Ash Wednesday, so the next time we meet Easter will have come and gone. I will leave you with this thought, at the time of writing there are only 281 days to Christmas. See you all again soon!

The Sanctuary Sparrow

MIRROR MIRROR ON THE WALL

*Mirror mirror on the wall
You looked at me so badly
Where once you showed me young
and fair
You now reflect quite sadly*

*You tell me – oh, too honestly
Tales I'll not want to hear
Of wrinkles, lines and sagging flesh
More with each passing year*

*Where once the hair was dark
Where once the smile was pure
Where once the chin was ever up
You tell the years' full score*

*But mirror if I look real deep
Into the eyes I stare
I still see me as once I was
Myself is still in there*

*The innocence still lurking
The young and trusting mind
The laughter at the silly things
Deep in those eyes I find*

*So mirror mirror on the wall
Reflect away at will
I know that in my secret heart
I am that young girl still.*

Nicolette A. Bodilly

**'Revitalise – Hayle Coast
& Country' Launch
Saturday 24th April at
Hayle Community College**
The South West of England Regional Development Agency is funding a new, community based regeneration initiative for Gwithian/ Gwinear, St. Erth and Hayle area.

The local partnership will fund 'early action' and priority projects. Applications for this funding are now available by writing to the Initiative Office, Unit 18, Hayle Shopping

Arcade, Chapel Terrace, Hayle TR27 4AB.

A TOTAL OF £5,000 FUNDING FOR THE FIRST SUCCESSFUL BIDS WILL BE ANNOUNCED AT THE LAUNCH.

There are over 200 such communities across the South West and NOW it is the turn of 'Revitalise – Hayle Coast and Country'.

The new initiative offers resources to prepare social, economic, environmental and cultural projects to improve our communities.

There is funding to provide training and support to local people and organisations to carry out this work.

Local people will be identified as 'Community Agents' to keep things

Come to

Footsteps

27 Penpol Terrace

01736 757735

for all your Easter
Footwear



moving.

Local 'BROKERING TABLES' will be established where sources of funding will be sought for local projects.

THERE IS AN OPEN INVITATION TO THE PUBLIC TO ATTEND THE LAUNCH AND TO INDICATE THE INTEREST GROUP OF THEIR CHOICE:



Connor Downs Post Office Can now Issue Car Tax

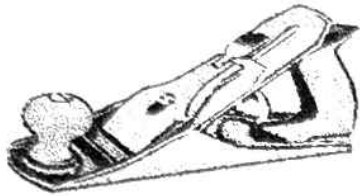
As well as:

- **Post Office Services banking deposits/withdrawals**
- **SWEB key Charging**
- **Mobile phone top ups**
- **Photocopying**
- **Sweets**
- **Greeting cards**
- **Stationary**
- **Off licence**
- **And General grocery**

Easy Parking

Tel: 01736 753 159

HAYLE JOINERY



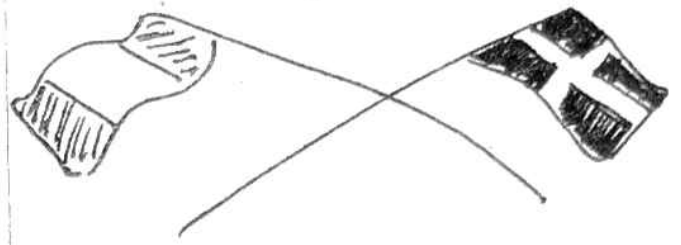
FOR ALL OF YOUR JOINERY
REQUIREMENTS IN SOFTWOOD OR
HARDWOOD.

DOORS, WINDOWS, CABINETS,
BOOK CASES, STAIRS.

TEL/FAX 01736 751715
MOB 0779 950 3303

- Tourism, Heritage & Culture
- Children & Youth
- Town & Village Centre Improvement
- Leisure, Recreation & Environment
- Housing
- Community Learning
- Employment
- Transport
- Health & Community Safety
- Community Information

*Further information from Neil
Wilson-Barker 01736 757259
24hrs/answer phone or Jeremy
Joslin 01736 754147*



HAYLE TWINNING ASSOCIATION

Did you know Hayle is twinned with a town in Brittany called Pordic? It's a beautiful town similar in many ways to ours, the population is 5,500 and it is situated about 1½ hours from Roscoff, about 1 hour from St Malo and about 1½ hours from Mont St Michel and Brest. We have been twinned since 1997. As a parent would you be interested in joining our association? We meet on the 2nd Tuesday of every month; we host our Pordic friends for two or three days usually around May. There is always a programme prepared for their visit, including an outing and a meal which are paid for out of the money that we raise throughout the year. We then visit them around September and are treated the same on our visit which is usually from the Friday morning until the Monday evening.

Membership fees are £3 per single person, £5 per couple and £7 per family. If you are interested call Maurice Trathen on 01736 753520.

This year we held our after Christmas meal at the Tyingham Arms. In all 31 members and friends attended, once again it was a good and enjoy-

able social gathering. We thank Brad, Lyndsay and staff for their service. Our AGM was held in February and was well attended, the officers elected were the same as last year, after the meeting we had a light buffet and wine or orange juice. I would like to thank members who supplied this. We are now entering our seventh year and are well pleased with our progress. Remember we are here for the benefit of the people of Hayle so come and join us.

On 17th March 43 twinning members and friends enjoyed an evening of Chinese cuisine. This was a fund raising event and took place in St Ives.

This year our Pordic friends are coming over on Thursday 20th May at

about 3.30pm, they will be leaving on Sunday 23rd May at 5am. We are busy arranging a programme for their visit, this will include taking them out for a meal on Friday evening – last year 84 people attended. On Saturday the day will be spent in Falmouth with a visit to the Maritime Museum included. Our return visit will be September 10th-13th.

We are trying to organise a video/conferencing link up through the schools, and we are also trying to get a contact for Marie Francois Cariou, who is a teacher, with the hope of her exchanging catering students.

Language Drop in Sessions

Hayle Community Language College has introduced a drop in session for

Tel 01736 752119 **TREVASSACK** *Mob 0773 073 3263*
NURSERIES
GARDEN CENTRE
HIGHLANES HAYLE.

OPEN 10.30/1.00pm-2.00/5.00pm

LARGE SELECTION OF PLANTS FOR BEDDING, TUBS AND HANGING BASKETS, INCLUDING FUCHSIAS, SURFINAS, OSTEO, PELARGONIUM ETC. SPECIAL OFFERS ON GLAZED POTS & CONTAINERS, SEED TRAYS, PLASTIC TUBS & BASKETS, WIRE BASKETS, COMPOST, GROW BAGS. READY PLANTED BASKETS & TUBS. BAMBOO WINDBREAKS, STONE ORNAMENTS ETC. VARIOUS SHRUBS IN CONTAINERS. WOODEN TROUGHES, LOG EDGING ROLLS.

Top of Highlanes near the football club

everyone interested in learning a language. It's on Tuesdays from 5pm-7pm. Cost £1 per hour. Languages include French, Spanish, Italian, and for the rest of this term Japanese.

Also at a cost of £1 per half hour you can do conversational French. If you travel by plane or just in your imagination then take advantage of these facilities and what they have to offer. To find out remaining dates for this term telephone: 01736 752808.

LET'S SUPPORT IT SO THAT IT DOESN'T CLOSE ITS DOORS ON US! THERE IS ALWAYS FRIENDLY HELP ON HAND.

Maurice Trathen, Chairman, Hayle Twinning Association

THE MILLPONDS IN WINTER

Since the beginning of the year our growing flock of wildfowl have been joined by small family groups of teal, which tend to commute between the ponds and the estuary. Several firecrests were also spotted along the Rope Walk. These diminutive gems are among Britain's smallest birds and are regular winter visitors to the Millponds. Their relatives, the goldcrests, are all-year residents.

Conservation students have recently carried out some very successful remedial work along the Rope Walk. The joint operation was masterminded by Duchy College and Cornwall County Council's Environmental and Heritage Services. The students culled some dead trees, re-

The Mad Hatter

Tearooms and Bed & Breakfast

Breakfasts, Lunches, Snacks,
Cream Teas & Home-made Cakes.
Tea Garden. Dogs Welcome



Homely atmosphere with friendly people
Open all year Mon—Sat. 10am—5.30pm
Double, Twin & Family Room
Overlooking Hayle Estuary with TV,
Tea & Coffee Facilities.



73, Fore Street, Copperhouse, Hayle TR27 4DX
Telephone/ Facsimile 01736 754241

moved excess ivy growth from the tree canopy and repaired the path. It is hoped to carry out further projects during the next few months as part of the college's Woodland Management Course.

The Inner Pond has also been a hive of activity, with Phil Drew and his gang once again donning their wet suits for the annual parrot weed pull. Since their sterling work on this "alien invader" last year its growth has been greatly reduced. Each subsequent removal should eventually eradicate it altogether and allow the native marginal plants to recover and regenerate around the ponds.

Whilst they were there Phil and the boys removed the annual crop of traffic cones, various items used to make a bridge over to Duck Island and deepened the channel between the island and the woodland bank. Duck island is an important nesting area for the resident wildfowl, especially the swans, and tempting though it may be to use it as a play area, the island is "Off Limits" from March to September to avoid unnecessary disturbance to nesting birds.

The next major project that needs to be tackled is the first stage of the willow coppicing at back of the Inner Pond. Two streams feeding into this very boggy area also need looking at because of all the inert builders' waste which was dumped there during the late 1970s and early 1980s around the area where they enter the pond. Coppicing will be carried out over the next two winters so as not to make too drastic a reduction of tree cover for nesting birds and to prevent the site from completely drying out

SINGER & PFAFF SEWING CENTRE

MR & MRS D.M. GIRLING

AUTHORISED SINGER SERVICE
CENTRES FOR CORNWALL

ALL MAKES SERVICED

AT

2 QUEEN STREET, PENZANCE

01736 - 363457

&

11 JOHN STREET, TRURO

01872 - 225168

*NEW & RECONDITIONED
MACHINES ALWAYS AVAILABLE*

when the trees are pruned.

Now the ponds are getting ready for spring, as the hundreds of daffodils planted along the banks as part of Hayle-in-Bloom 2003/4 are beginning to flower and the willow and alder catkins are much in evidence around the water margins. As I write, winter hasn't quite left us yet, but in spite of the early morning frosts and northerly winds, it will soon be on its way!
**Georgina Schofield, Volunteer
Wildlife Warden, Hayle Millponds**

Whether the Weather

*Whether the weather be hot,
Or whether the weather be cold,
We'll weather the weather,
Whatever the weather,
Whether we like it,
Or not!*

Alison Johnson

Letters.....

Letter

We really enjoy reading the Pump. Having only been here for 16 months it has helped us know about Hayle and who to contact when we have needed things doing.

We came from a village which had a similar newsletter called "In Touch". On the first page we had a very useful list of most, if not all, events which were going to happen in the next month. Both my husband and I enjoy concerts, quizzes, fund raising events etc. but rarely see them advertised or else we see a poster in a shop after the event has happened.

I realise this is extra work but if a paragraph was put in asking people to let you know of forthcoming events it would help them as well to get their particular event publicised.

Congratulations on an excellent newsletter.

**Mrs Camille Driver, Heather Lane,
Canonstown, Hayle**

(Editor's note. Many thanks for the kind comments. Regarding a dedicated events diary, as Mrs Driver rightly says, this would mean extra work, and quite frankly we don't have enough members on the Pump team to take on any more. As regular readers will know, however, since our inception we have always been prepared to publicise any Hayle event of which we are given details, and this remains the case.)

Letter

In reference to the reader who mentioned cyclists without lights – I'd agree with this and as a cyclist I use two front torches so when one gets flat I have an instant back-up. Rechargeable batteries save hundreds of pounds in their lifetime and are more environmentally friendly. I use them all the time. Perhaps other people can use this tip, particularly those who, to the outside observer, seem to think that dressing their children in dark clothes with no reflective strips will somehow be OK. Do they hate their kids that much?

I often cycle in areas that have no pavements or street lighting and have frequently nearly collided with adults walking with their backs to the traffic, dressed in dark clothes. FACE your enemy! The enemy is traffic! Carry a newspaper if you have no light coloured outer clothing and – gosh – carry a torch!

This is all pretty redundant now with the lighter nights, but winter always comes around again.

Be aware of your 'splat-factor'. Vehicles are very unyielding.

Linda King (Address supplied)

Letter

We would like to thank all the retailers of Hayle, who contributed to the success of the raffle we held on the night we switched on our Christmas lights, by generously supplying the prizes. With sincere appreciation.

The Angarrack Lights Committee

Letter

When I was on holiday in Spain last year, I noticed that in the shops that sold batteries and also at a central point in the town there were bins supplied for the recycling of old batteries. I telephoned Penwith Council Offices to enquire why there was not a similar facility here, and was told to put old batteries in my wheelie bin. Surely we can do better than this? Is it appropriate to put these in the landfill?

Name & address supplied.

Letter

In reply to a letter in the Pump, thanking only two people for putting up the lights, I would like to point out that there was a third member, Jayne Quick, who was always there with practical help and sarnies and coffee. How your writer missed her I don't know!

We would be unable to put up anything without the support of the rest of the team who work on the set pieces throughout the year and the hard-working committee who keep everything on track.

R. Horwell, Chairman tel: 752597

Letter

Through the pages of the Pump I would like to thank everyone who has contacted me and collected /passed to me used ink cartridges. I am still collecting these in order to raise funds for Cornwall Air Ambulance. Please contact me by telephone for more information. Thanks again.

Alison Johnson 01736 757221

Letter

Although there will not be a Hayle Heritage Festival as such this year, some of the events will take place as before. One of these is the **ROSE AND CABBAGE SUMMER SHOW**, being held on **August 3rd**. Now is the time to get ready. There are prizes for the following classes: **VEGETABLES, HOME PRODUCE, FLOWERS, PHOTOGRAPHY, POT PLANTS, FLORAL ART, HANDICRAFT CHILDREN'S WORK.**

Schedules will be available in late May, just look for the posters in the many shops that are helping us. It's fun just taking part and who knows, **YOU** might win!

Hayle Rose and Cabbage

IAN GRATTON

**CENTRAL GARAGE
6-10 HAYLE TERRACE**

**QUALITY USED
CARS**

**Come and See our
Comprehensive Selection**

01736 755885

*** SHOP * PETROL *
* FORECOURT *
* COAL * GAS * LOGS ***

ROADCRAFT SCHOOL OF MOTORING

Detailed and patient tuition
from

CHRIS MILLER, D.T.p., A.D.I.,
M.I.A.M.

*Learner, Pass Plus &
Advanced Tuition*

*Free Starter Packs

*Video Loan

*Theory Test Papers

*Pre-Test Checks

*Instruction for Nervous Drivers

*Night Driving Lessons

*Motorway Tuition

0800 0260293

01736 752800 (24hrs)



HAYLE BRANCH
RNLI

Hayle branch of the RNLI look forward to another year of fund raising. The crew were at Tesco's in Camborne and Carbis Bay on 2nd/3rd April for a national collection. I do hope you put some money in their buckets.

On Saturday 3rd April Sean Morley set off from the Maritime Centre in Falmouth on the first solo circumnavigation of the U.K., Ireland, including the Isles of Scilly, Northern Isles and Channel Islands by Sea Kayak, a distance of over 4,000 miles. He hopes to complete it within 6 months,

raising money for the RNLI and the Marine Conservation Society, the money for the RNLI coming through the Hayle branch. If you would like to donate call in and see Shirley & Roy Hayes Glass rear of Central Garage Hayle and pick up a sponsor form. We wish Sean well -you can follow his progress on his website:- www.yak-paddling.com we wish him well.

Easter Sunday 11th April the members will be collecting at McDonald's Hayle

May 11th our A.G.M. takes place at the Day Care Centre Hayle, 7.30pm, all are welcome.

Shirley Hayes.

INVISIBLE

*Why is it no-one sees
While I am standing here
Waiting past and past my turn
Why do I disappear?*

*Am I become invisible
Do I cease to exist
When my turn to be served comes
round
Why is it I am missed?*

*The waitress doesn't notice me
The barman passes by
The taxi that I whistle for
Picks up some other guy.*

*That waitress and that barman
Would see me, I've no doubt
If my bill I did not pick up
And passed them, walking out.*

How can I become noticed
How can I make a mark,
Shall I just be more colourful
Light up when it gets dark

Maybe I should be noisy
Talk loud, act very tall
But if I changed so drastically
I'd not be me at all

Nicolette A. Bodilly

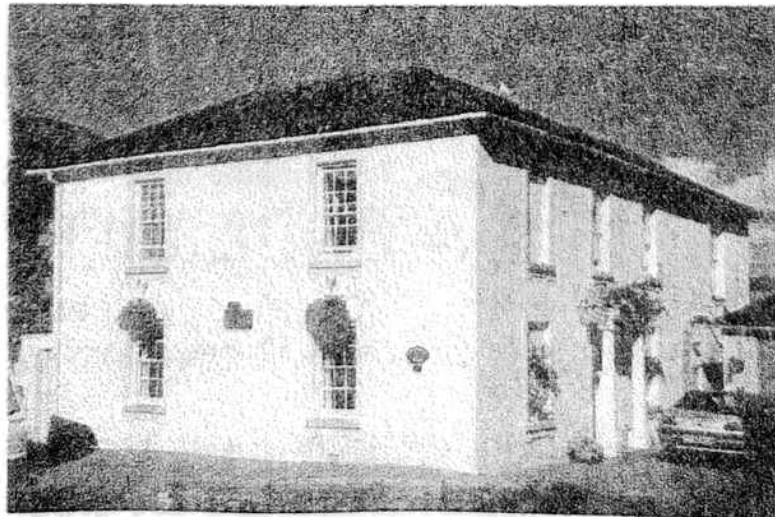
There was no other good
enough
To pay the price of sin
He only could unlock the gates
Of heaven and let us in.
"Christ Jesus came into the
world to save sinners."



CRANFORD HOUSE
BED & BREAKFAST
OPEN ALL YEAR – CHILDREN WELCOME

ALL ROOMS
EN-SUITE

NON
SMOKING



ALL ROOMS
EN-SUITE

OFF ROAD
PARKING



PETER & PEGGY DARLOW

01736 752618

Foundry Hill * Hayle * Cornwall * TR27 4HW
cranford-guesthouse@talkgas.net

Eisteddfod Event

The Cornwall Guild of Weavers Spinners and Dyers met at Tresillian Village Hall on March 19th. The Hall was buzzing with excitement and anticipation, indeed the Cornish kilt was to be seen swirling among the throng. Fun, laughter and smiles were perhaps the main characteristics of the day. The Eisteddfod Competition was enjoyed by members, guests and judges. A variety of different exhibits interpreted the theme "Wild Cornwall." Different techniques and dyes abounded. Among the exhibits were several from the Hayle area and the winner was Barbara Navai with her entry of a hand-woven cape – "a wrap designed for the wild and windy days in Cornwall." Sonia Angove came second with a

woven scarf in the Cornish tartan. Jinty Knowling Lentier came third with a display of miniature tapestries. Esethvos Kernow is held every three years and is part of the Gorsedd. The Cornwall Guild of Weavers Spinners and Dyers meets every 3rd Friday in the month at Tresillian Village Hall. Fun and learning is had by all so come and join us – don't forget to bring your spinning wheel or loom and a packed lunch. April talk at 2pm will be on the subject of weaving, Joan Chynoweth's personal experiences. May's meeting is on Felting. Please contact Sonia Angove, chairperson 01209 712067 for further information.

PLEASE SUPPORT
LOCAL TRADERS



NURSERYTIME

SUE & PAUL BUTLER

BABY EQUIPMENT & CLOTHES AT COMPETITIVE PRICES.

CORNISH MARKET WORLD, PAR, ST AUSTELL.

PRATTS MARKET, FOUNDRY SQ, HAYLE.

SHOP 01736 752233

NOW ALSO AT POOL MARKET WEEKENDS, 01726 817771

CANCER

Being told that you have cancer can be a very traumatic experience.

That one little word can create havoc and turn your life upside down And no matter what advances medical science makes, there will never be a pill, or a lotion to take that fear away.

Hopefully there will be assistance from the Macmillan Cancer Relief The Macmillan Nurse will provide what science can't, the very best care in human form. The support they give defeats fear, and helps people to get on with their lives in spite of cancer.

Their vital work must continue into the future. You can help make sure it does, by leaving a gift in your will, or like I have done by making a direct debit from the bank each month. If it can't help you, it may help some other unfortunate person.

Most of us can cope with what we can control, but cancer can be a terrifying experience, mostly through sheer ignorance. More people die of contributory diseases than cancer. Heart disease can be a sudden killer without a warning. You go from day to day not knowing what each day will bring. Cancer does give you time to put your affairs in order, and time to think.

Our allotted span on the average is three score years and ten. So when us old senior citizens reach over eighty, that should be thought of as a bonus.

Charles Crowle

(Editor's note. We echo Mr

Mrs Terry Lello
COUNTY COUNCILLOR



If you need any assistance with matters relating to County District or Town Council I would be pleased to help and can be contacted at:-

telephone

01736 - 757507

or

e-mail

tello@cornwall.gov.uk

Crowle's admiration for the work of the Macmillan nurses. We are pleased to report that the charity jazz concert "Jazz on a Winter's Night" at the Tregenna Castle in February, which we mentioned in the last issue, was a sell-out and raised over £2,300 for the Macmillan Nurses.)

The Angarrack Smelting House Hayle and Its History

Continued from last issue...

The practice of the tinner was to raise money by using this receipt as Bill of Exchange and selling it for cash, very often back to the smelter himself. Once the duty on the tin

covered by this bill had been paid at the coinage the metal could be claimed by the holder of the bill.

The smelter did not receive a monetary payment for his services, instead he took it in the form of a reduction in value of white tin, which he undertook to deliver at the next coinage, in exchange for the black tin which he smelted.

When the tinner took his ore to the smelter, an assay of its tin content was made by the assay master. This proportion was arrived at by taking a sample of one ounce of the ore (20 pennyweights) and melting it in a crucible from the weight of the tin which resulted, for example twelve

and a half pennyweights, thus they could agree the amount of white tin to be delivered from the black tin at the next coinage.

No history of the Smelting House at Angarrack would be complete without reference to the village public house known as the Angarrack Inn, but at one time as the Lamb. While there is not sufficient evidence that the mark stamped on the blocks of tin by the Angarrack Smelting House was that of the Lamb and Flag, it is more than likely that this was so, and would account for the adoption by this Inn of the sign of the Lamb. When the Inn ceased to be called by this name is

BIGGLESTONS

TRADING IN HAYLE FOR OVER 100 YEARS

**Please try us first for the best of Hardware,
Ironmongery, Kitchenware, Paraffin
and Garden Supplies.**

01736 752219

*Summer, Autumn, Winter, Spring
We can supply 'most everything*

PLEASE SUPPORT LOCAL TRADERS

not known but it was used up until 1841. It was not unusual to find an Inn close to a smelting house, the Treloweth works in the parish of St Ert had its Lamb and Flag which is still in business and close to the smelter at Stable Hobba near Penzance was the Lamb. The proximity of the Inn and the smelting house had a special significance in that the former provided a service by offering refreshment to those bringing their tin ore from afar as they bargained for its disposal with the smelting house manager.

The Inn changed hands several times, the dates are unknown. An assignment in 1752 to William Tremayne, of the Mellenoweth estate in which the Inn stands, describes the property in detail, but no buildings are mentioned as then existing. In 1873 the Inn then described as the Angarrack Hotel, was offered for sale, the occupier being Mr. Stephens. By 1900 the inn had been acquired by Christopher Ellis & Son Ltd., old established brewers of Hayle, whose business in 1933 was purchased by St. Austell Brewery Co.Ltd, which still owns the Inn.

The end.

*Researched by Charles L. Crowle
A.M.I.Mech.E.F.I.Diag.E.*



Des Button



ELECTRICAL SERVICES & SUPPLIES

01736 - 753211



SPRINGFIELD
33 CLIFTON TERRACE
HAYLE TR27 4BP



HAYLE PUMP SUBSCRIPTION SERVICE

For those readers who would like a Pump sent to family or friends elsewhere in the UK, or local people unable to get into Hayle to collect a copy, we operate a postal subscription service. Simply send us the delivery name and address CLEARLY PRINTED, together with £2.20 to cover the cost of stamps and envelopes, and we will send a year's issues (6 copies) of the Pump as soon as it is published. (UK addresses only – please make cheques/postal orders payable to “Hayle Pump Newsletter”.)

ALAN ORCHARD & SONS

APPRENTICESHIP SERVED



PROFESSIONAL TRADESMEN

CARPENTRY & JOINERY

uPVC FASCIAS

ROOFING

BUILDING & MAINTENANCE

01736 756687

07787 148571

27 GUILDFORD ROAD

HAYLE TR27 4PP

Britain's
Biggest
all day



Breakfast

On Saturday 20th March from 8.30am -12.30pm breakfast was served at Hayle Methodist Church.

10 willing helpers had transformed the Church Hall into a warm and welcoming restaurant. There were crisp white tablecloths with vases of flowers and printed menus and a delicious full English breakfast was served.

One man, very fussy about his eggs, said it was the best-cooked one he'd had and congratulated the chef! In all, the ladies served up 91 full breakfasts, 16 eggs on toast, 9 bacon butties and 1 beans on toast. All the ingredients were donated by members of the Church and in total a magnificent sum of over £750.00 was raised for Cancer Research. Very well done, both the fund-raising and the food.

Sarah Turk

What do you call a vicar on a motor-bike?

Rev!



**O'DELL
SIGNS**

OF ALL TYPES

Signwriting, Perspex

Plastic, Engraved,

Magnetic, Posters,

Illuminated signs,

COMPUTER CUT

VINYL LETTERING

for Vehicles & Signs

Embroidery
for
Businesses & Clubs

HAYLE 01736 753656

1, Turnpike Road, Connor Downs.

All Aerials

TV/FM Aerials & Satellite Specialists

*

Freeview & Sky Digital

*

Channel 5 Reception Problems & Tuning

*

Satellite Systems Installed & Maintained

*

Video/Satellite Playback Systems

*

Multi-point Systems—Domestic & Commercial

*

Members of the Confederation of Aerial Industries

*

Free Local Estimates

All Work Guaranteed * Fully Insured*
Competitive Prices * Prompt Reliable Service

For Free Friendly Advice Call

01736 759225

Mobile: 07979 503907

Email : info@allaerials.co.uk

Visit our web site: www.allaerials.co.uk



RSPB NEWS

It has been a great winter for birds on the estuary with up to 1500 wigeon and 500 teal as well as a good variety of waders. The rarities have kept coming too. The long-staying Lesser Yellowlegs from North America which arrived on the Atlantic gales last October is still here as I write this today, 27th February, but I think the American Wigeon may have gone as it hasn't been seen the last couple of days. A variety of gulls have been seen including an immature North American Bonaparte's

Gull for one day only, 25th February. Surely Hayle is the best estuary in Britain for such a variety of birds.

Work-wise we've been addressing the heavy metals that have accumulated in Ryan's Field behind the Hayle Causeway. The levels of contamination are such that we've had to treat the substrate with "chemical amendments" (that's "cat litter" to you and me!). Six tonnes of it in fact. The whole project has cost us a fortune so grateful thanks to English Nature who funded 50% of the work. Hopefully this will resolve the issue and allow the vegetation to develop in areas that have been bare for years. Part of this work entailed repairing the banks to the lagoon in front of our hide at Ryan's Field. This is now

David Moyse Clothing

**YOUR
LOCAL
SHOP FOR**



**MEN'S, WOMEN'S &
CHILDREN'S CLOTHING**

You are welcome to come in and browse



Call us now

01736 752053

38 FORE STREET,
COPPERHOUSE
HAYLE

*Spring
and
Summer
Clothing
for all
the
Family
now in
Stock.*

complete and the lagoon is looking like a lagoon again. Let's hope the birds appreciate all this.

David Flumm, RSPB Cornwall Reserves Tel./Fax 01736 711682

The RSPB is the UK charity working to secure a healthy environment for birds and wildlife, helping to create a better world for us all.



The Voice of the People of Hayle

Hayle Residents Association are holding their Annual General Meeting at Hayle Bowl on Wednesday April 14th, starting at 7.30pm.

All nominations for committee positions are to be sent to The Church Office, St Elwyn's Church, Hayle TR27 4JT to arrive no later than April 7th, signed by the nominee and the

LOSE WEIGHT FEEL GREAT AND KEEP IT OFF!

WANTED: People serious about achieving noticeable weight loss in the next 30 days.

- * Naturally derived products
- * Personally tailored programmes
- * Full customer follow up
- * 30 day money back guarantee
- * Eat your favourite foods

Call: Lucy

01209 832312

www.shedpoundsnow.co.uk
Independent Herbalife Distributor

member and include both their membership numbers. Please remember, to ensure we remain totally non political, no current County, District or Town Council officers are allowed to serve on the committee.

*Hayle residents association
St Elwyn's Church, Hayle*

W. J. WINN

FUNERAL & CREMATION DIRECTORS
PRIVATE CHAPELS OF REST
24 HOUR SERVICE



69 FORE ST
HAYLE
01736 752124

&

TRENWITH TCE
ST IVES
01736 793029



SPAR



**HAYLE. OPEN
6.30am-10pm,
SEVEN DAYS
A WEEK**

Telephone us on (01736) 753327

FOOD TO GO

NATIONAL LOTTERY



FRESH BAKED BREAD

SPIT ROAST CHICKENS



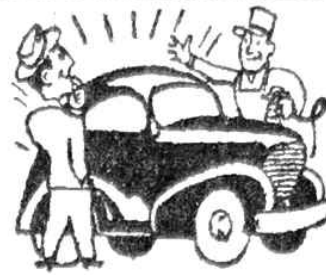
WE ACCEPT CREDIT CARDS AND GIVE CASHBACK

ADVERTISING – A MESSAGE FROM THE EDITOR

The Pump, now in its 10th year, has survived as a free magazine thanks to the local traders who have supported us so loyally.

Equally, we are pleased to learn from our feedback that our advertisers invariably get an excellent response to ads placed with us. We are able to keep our rates at their current levels, with only occasional increases in line with inflation, because all our staff are unremunerated part-time volunteers who put a lot of effort into producing the Pump, but also have other lives to lead. This means, therefore, that advertisers do not get the "spoon feeding" they might get from the larger, more commercial, media outlets, which employ full time paid staff. For example, we lack the resources to send staff around collecting or seeking individual advertisements. We also experience occasional problems with those who do not meet our deadline dates, and also do not settle up promptly. We would like to appeal to all advertisers and potential advertisers to send their ads in to the Pump office, or one of the collection points, by the deadline date (20th of month before publication), and to remind new advertisers to send payment with their ad. And one final, technical point for prospective advertisers – for some reason our printing machine does not take kindly to wide bands of black, so please if possible avoid these in your ad design. Any queries on advertising should be addressed to Sarah Turk on 01736 752319.

Thank you for your anticipated co-operation, which will greatly help our



**Spit
&
Polish**

Vehicle Valeting
Specialists.

Unit 10C
Central Garage Hayle.

*From a car wash to a full
Valet, Ian and staff would
like to welcome customers
old and new.*

Phone 01736 753332

team of stressed, unpaid volunteers to continue the production of the Hayle Pump!

Goudie Charles, Editor

KRIS GAYLE ST IVES GIG RESCHEDULED

Hayle jazz singer Kris Gayle's planned appearance at St Ives Jazz Club, reported in the last Pump, was cancelled because of the tragic death of pianist Viv Rodd's daughter the day before the event. The gig has now been rescheduled for Tuesday 13th April, and will take place at the Western Hotel St Ives, doors open at 8.30pm. Kris's accompaniment will again be Viv Rodd piano, Terry Rodd drums and Goudie Charles double bass.

WHERE IN HEYL AM I?

Many congratulations to the eagle-eyed readers who managed to identify the location of the two photographs in the last issue.

The answers were:-

1. 36, Hayle Terrace, opposite Hawkins Garage, (selling second-hand goods).
2. Drill Hall

The winning entrant was:-

Mrs. R. Crew, 5 Kernick Way, Hayle.

For this issue's competition, once again simply write in and tell us the location of the photos shown.

The prize of a £20 voucher, which can be spent with any of our advertisers, will go to the first entry drawn out of the hat. Closing date 20th May.



SUITES & SOFAS CLEARANCE WAREHOUSE

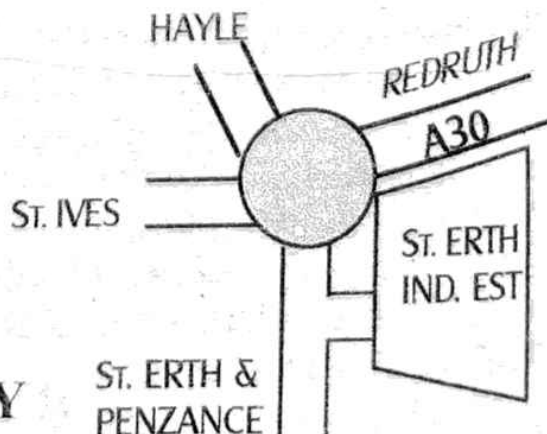
UNIT P, ST. ERTH INDUSTRIAL ESTATE, CANONSTOWN, HAYLE
*BANKRUPT STOCK, MAIL-ORDER RETURNS, FACTORY CLEARANCES,
END OF LINES ETC.*

SUITES, SOFAS, ARMCHAIRS & COMBINATIONS
AVAILABLE AT CLEARANCE PRICES

FOR DETAILS OF OUR CURRENT OFFERS
AND TO VIEW AT ANYTIME
PLEASE PHONE

07779 760686

**OR VISIT OUR WAREHOUSE
BETWEEN 11am – 4pm DAILY
WHEN WE'RE OPEN TO VIEW**





Pedal Back the Years

Pedal Back the Years is an innovative project supporting people who want to get more active, more often. The scheme provides guided cycle events on a number of our beautiful cycle routes across the county. If you have your own bike, taking part is absolutely free. If you need to hire a cycle these are available at £4.00, however on joining the programme, you will be entitled to free hire of equipment for your first introductory ride.

These events are specifically designed to help those who have not cycled for a long time regain their confidence on a bicycle.

What to expect: It is important to remember these events are designed just for you and support staff will be nearby at all times to help you have a go and hopefully have some fun.

Before the ride: Initially we encourage people to try riding around the cycle hire centre. The Support Riders and Cycle Hire staff are on hand to adjust bikes, help you start off, explain gears etc and anything else of which you are unsure.

The routes: Those chosen for beginners' events will all be fairly flat and easy to cycle. Distances will be short and the rides leisurely and broken up with rest stops.

The backup: Two Support Riders will attend each event – one at the front and one at the back. No-one will ever be left behind, or need feel they are holding people up. All support riders are able to carry out minor

Quality resurfacing
& repairs service

Repair Resurface Replace

Call us now for more information
Phone 01736 756077
92 Commercial Road
Hayle, Cornwall
TR27 4DJ

Cspray
Baths and Kitchens

INSURANCE WORK UNDERTAKEN

As you can see we have yet again had another name change, for reasons beyond our control. We feel that this new name states more clearly what we are about, either repair if possible, if not then resurface, and if neither of these are suitable, replace.

mechanical repairs and have skills in Emergency Management and basic CPR.

The equipment: Cycles/helmets are available to hire on the day. There are a variety of bikes available, including standard, tandems, adult trikes, and bikes for special needs.

What to wear: Don't worry, no lycra is necessary. A comfortable pair of trousers and a sensible pair of shoes is ideal.

Joining the scheme.

Anyone can attend a PBTY ride, but enrolment onto the scheme will entitle you to free hire of equipment for your introductory ride.

To join or find out more, contact the Project Office or turn up at one of our events and see for yourself.

BARTON prini

for all your printing requirements

- 07799 411525 -

**General Printing
Letterheads
Business Cards
Compliment Slips
NCR Pads & Sets
Flyers & Leaflets**

1 Turnpike Road, Connor Downs
Hayle, TR27 5DT

Penzance to Marazion trail Fridays:

12 Noon start

In April: 9th, 23rd

In May: 7th, 21st.

Tehidy Country Park, Tuesdays

12 Noon start

In April 6th, 20th

In May: 4th, 21st.

David Readman
Pedal Back the Years Officer
Room 406
John Keay House
St Austell PL25 4NQ
01726 627816



THE LEGEND OF ST PIRAN

(A story for children)

Long ago in Ireland, in the days of magic and miracles, there lived a

tall, holy man called Cieran. Cieran had special powers. It was said he fed ten Irish kings and their starving armies with three cows. People brought their sick friends to him to be healed, and animals could speak to him and they would come and sleep at his feet.

Cieran would talk to his friends about his special powers and about the love of God that helped him. Around his neck he wore a 'lecc' – a small round stone which he could use as an altar whenever he wanted to pray to God. As word of Cieran's wonderful deeds spread and grew throughout the land, so did the whispers and the jealousy of the Irish tribal chiefs. They plotted to get rid of Cieran and one stormy night they crept up on him as he was praying on the cliffs of Ireland. The chiefs had their men bind him with chains to a millstone and he felt himself pushed towards the cliff edge. Cieran clutched the lecc stone tightly and prayed even harder.

A clap of thunder and a flash of lightning answered his prayers. Cieran's body seemed to float gently down towards the sea. His black cloak filled like a sail. The warm breeze blew him gently away from the land where the people would not listen to his words about God.

Some time later, Cieran found himself washed up on a long stretch of golden sands, surrounded by a small crowd of people. They spoke to him in a strange language and he could not understand what they said. He told them his name was Cieran. But they said his name the Cornish way which was 'Piran'. When they asked him how he had arrived on their

beach, he showed them the stone around his neck.

"I came with the power of this" he said, meaning the power of God. Word soon spread that a massive man had floated across the seas on a stone with a hole in it. A mill stone is in the ancient story. The chiefs made sure of that. But surely a stone cannot float? This man must have had magical powers.

Piran lived a simple life with three special animal friends. A fox, a badger and a boar or bear (legends vary). He continued to heal people and animals seemed strangely calm when he was with them. An oratory was built for St Piran where people could come to hear him speak, on the dunes at Perranporth. Crowds would gather to hear him talk and fires would be lit to keep people warm as they ate and drank into the night. 'As drunk as a Piraner' is phrase that lives on!

It was on one such night that Piran noticed a stream of silvery white metal flowing from the black stones around the fire. The metal cooled in the hollow ground and in the morning Piran showed it to the group around him. The tin ore, which is what it was, and its many uses grew from that day. St Piran gave the hard working people of Cornwall strength from the teachings of God. His discovery of tin gave men wealth and power to make discoveries of their own.

St Piran's flag is a white cross on a black background. The colours come from the dark clothes of a humble preacher, tied with rope, the silver white tin flowing from the black rock

PENPOL GARAGE

(Neil Murley & Martin Richards)

**17a Penpol Terrace
Hayle**

Tel. 01736 757011

Mob. 07971 842908

**all general repairs on
all makes of vehicles**

MOT work

Tracking

Tyres

MG specialists



Recommended

and the light of God's word shining from a gloomy past.

St Piran's day is celebrated all over Cornwall. It is on March 5th, the day when once a holy man arrived from Ireland on a stone with a hole in it, to give the Cornish people hope of a great future.

Angie Butler

Originally written for children to illustrate, and by so doing, learn the great legend of their Cornish Patron Saint, by a teacher for her children. To find out about more of her local stories and books contact her at:-

angie@westcountrygiants.co.uk

5 Regent Terrace, Penzance, Cornwall. TR18 4DW - 01736 365513.

www.westcountrygiants.co.uk.

**THE AUTO CENTRE
and SLOW FITT
58 MELLANEAR ROAD,
HAYLE
01736 757777**

The Hayle and District response has been truly amazing, the work load was up by 130%

Well, Spring is almost here, let's hope for good weather so that we can enjoy our beautiful county.

So what can we do to help keep you motorists safe?

- Batteries from only £28.99 including VAT – FITTED FREE!
- Popular exhausts start at £15.99 including VAT – 2 year guarantee – FITTED FREE!
- Brake check – free of charge – no obligation
- Starter motors, alternators, shock absorbers, clutches, tyres and much more
- Menu priced servicing, starting at only £49.99 all inc.
- Engine oil and filter change, starting from only £19.99 all inc
- While you wait service available

When my car is in for service or repair – can I have a courtesy car? **YES YOU CAN!** If you have an important meeting, hospital appointment, shopping to do, work or school commitments – why not take advantage of one of our new courtesy cars?

Will you collect my vehicle for service, repair or MOT and bring it back to work or home for me?

YES WE WILL!

Say I can't start or drive my vehicle to the garage, will you recover it for me?

YES WE WILL – AND FREE OF CHARGE! (contact us for full details)

Towing and transportation – in a fix, just give us a call 01326 573474 emergency service in operation 24/7.

Diagnostic problems, engine machining and re-builds can be carried out in our fully equipped engine shop: we already carry out work for Volvo, BMW, Mercedes, Ford, Vauxhall etc. – for advice or general enquiries phone David Bird on 01326 572625.

Why did the AA and RAC choose THE AUTO CENTRE and SLOW FITT?

-To become their largest contractor they have in the West of Cornwall – “enough said” – are you a member?

Well, as you can see, if you have a motoring problem, THE AUTO CENTRE and SLOW FITT can offer you advice and service to meet your needs, and we shall be glad to be of service to you.

**HAPPY EASTER – SAFE
MOTORING TO ALL.**

Advertising feature.

HAYLE LIBRARY NEWS

Hayle Library's friendly staff are looking forward to **Spring**. For keen readers the Reader's Circle book group is reading "Beyond Nab End" by William Woodruff. Everyone is welcome, come along and ask us for details if you want to join.

For non-bookworms we have a special Easter offer from 5th – 25th April, with two for the price of one on our videos, DVDs, CDs, Pc and Play-station games. You can borrow any of these for one week, and get the cheapest item free!

We are happy to be teaming up again with Surestart Portheyl for our exciting family Easter Activity. Support worker Libby and Children's Library Assistant Sam join forces for another

fun story with puppets and music, and a chance for children to join in. Come along and join our Easter egg hunt at 2pm on Saturday 10th April. Don't forget that it's free to join the library, and you can get hold of all sorts of computer games, music CDs, comics, films and talking books. If you're not a member, bring something along with your address and we can sign you up immediately. Everyone is entitled to a free half hour's use of the internet on our computers, with special deals for those on benefits.

From the Library Staff

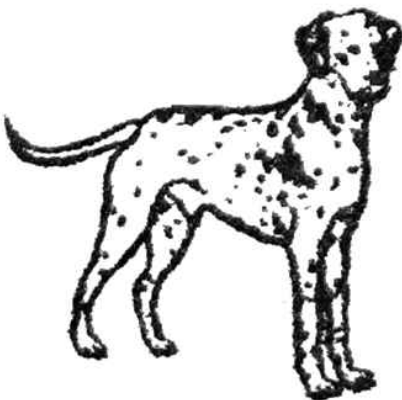
What do you call a man who has more than one raincoat?

Max

DYLAN'S CAFÉ

6-7 Foundry Square, Hayle, Cornwall

Tel. 754809



All Day Breakfast
Fresh Cooked Lunches
Cream Teas
Vegetarian Menu
Children's Menu

Proprietors Alan & Rosemary Cummings

NEIL WADE
MOTOR ENGINEER
CENTRAL GARAGE
10A HAYLE TERRACE
HAYLE

M.O.T. TESTING STATION
DIESELS & CATALYSTS
TESTED*
SERVICING*REPAIRS*
WHEEL BALANCING*
EXHAUSTS*TRACKING*
TYRES*BATTERIES

HOME: 01209 610651
MOBILE: 07990 981546
WORK: 01736 756512



PLANTS ON THE TOWANS – **VIPER'S BUGLOSS**

Once widespread in England and Wales this beautiful little plant is now quite rare. Fortunately it has found a home at the south end of Hayle Towans, especially on and around the quays.

Identified by its striking almost white stem with black spots and lovely violet flowers, Viper's Bugloss (*Echium Vulgare*) is not mentioned much in modern herbals. However the Greek herbalist Dioscorides reckoned that "whosoever shall take of the herb or root before they be bitten, shall not be hurt by the poison of any serpent." (Culpeper).

So you have to take the remedy before you're bitten – all you need is a crystal ball and you're all set. (Adders being very much at home on the Towans.)

Of the five elements Viper's Bugloss is predominately metal, to do with value, respect and hence grief. (You don't grieve over something you don't value.) The organs associated with metal are the colon and the lungs.

Altogether an interesting and beautiful plant with a fabulous name.

Michael Locke

THE DARK

*One o'clock in the morning
Just another sleepless night
Trying to remember when or if
The rain taps on my window
A song bird in the dark
If I'm still not awake
It would not be heard
I long for the clock to stop
Tic-toc in the night
I could remove the batteries
But that silence would just not be
right
My children sleeping so sound
Resting in their beds
A minute more
Then one o'clock has gone
Just another minute
Bird song
Every hour so different
But every night the same.*

Caroline Blewett

Archers of the West

Around 100 people attended the "Have a Go" organised by local archery club, Archers of the West on 20th March at Phillack Church Hall.

The day was so successful that over 20 people have signed up for the beginner's course which started on the 29th of March, with the first 4 weeks indoors and the remaining 2 weeks outside. It is not too late to book a place on this course or the one beginning early summer, which will be held outside.

Details of both courses are obtainable from the secretary Tony Farrell Telephone 01872 540682 or email compoundtony@aol.com



**DEREK
ELLIS
CARPENTRY**

D. Ellis
Carpenter

Carpentry

Decking

Kitchens

Building

A Friendly and Trustworthy Service

73 Fore Street

Hayle

Cornwall TR27 4DX

Telephone: 01736 754241

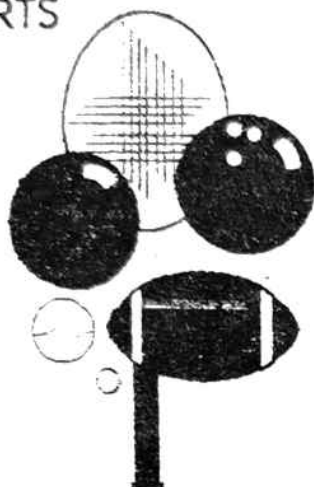
Mobile: 07775 614158

ANGOVE SPORTS

COPPERHOUSE, HAYLE
01736 - 752238

FOR ALL SPORTS
EQUIPMENT
CLOTHING &
FISHING
TACKLE

*
RACKETS
REPAIRED
& RESTRUNG



PENWITH CREDIT UNION LTD.

We at Penwith Credit Union have been slowly making our presence known in Hayle. We are open in the Community Centre in Queensway on Tuesday morning from 10.00 – 12.00. (This centre is the jewel in Hayle's crown, more people should know of its many benefits for all groups who use it and will use it in the future).

Many people still do not know of the Credit Union or what it is about, so I will give you a quick run down.

Penwith Credit Union has been around since 1999 and is a non-profit making financial institution run for its

members by its members.

A group of dedicated volunteers ran the union in its early days and by late 2000 employed part time paid staff (via a grant from the Key Fund).

In March 2003 I was employed as a Development Worker to encourage more people to become aware of how our low cost loans work, and to save with us.

Any age can join from week old to 100 years young. The adult members (anyone over 18) who save with us can also borrow money at a very low interest rate. We require members to save regularly for 13 weeks before we agree, via our Credit Committee, to a loan. If you borrow £100 over 12 months you will pay only £6.25 in interest.

We do not need to know about any past money problems – we only look at how much and how often you save with us when considering a loan application.

Hayle is an ideal area to promote the rise of the Credit Union.

If you would like to find out more come along to our collection point on Tuesday a.m. in Room 8. Community Centre, Queensway

Ruth Browning Tel; 01736 366200

Fax; 01736 366225

Email ruth@penwithcreditunion.co.uk

This newsletter has been assisted by a grant from the Neighbourhood Renewal Unit.



INDEX OF ADVERTISERS

All Aerials...33
 Angove Sports...46*
 Auto Centre/ Slow Fitt.42*
 Barton Print...40
 Biggleston's...30 *
 Bouncy Castles...15
 Brookvale...18
 Button, Des...31
 Connor Downs P.O...19*
 Cranford Hse B & B...27
 C Spray...39
 Dylan's Café...43 *
 Ellis, Derek...45
 Farm Shop...17*
 Fernleigh B & B...14
 Footsteps...19 *
 Furniture W'house...38

Gratton, Ian (Garage)...25*
 Hayes, Roy...7
 Hayle Holistic Clinic..47*
 Hayle Healthfoods...12*
 Hayle Joinery...20
 Hello Gorgeous...5
 J C Electrical...8
 Jolly Bodger...4 *
 Keast, H.L...10 *
 Lello, Terry...29
 Mad Hatter...22*
 Moyse, David...34 *
 Nurserytime...28
 O'Dells...32
 Orchard, A.P...32
 Penpol Garage...41
 Philp's Pasties...16

Prosharp...6
 Roadcraft...26
 Sewing Service...6
 Singer Sewing Centre...23
 Slowfitt & Auto...42*
 Smithy's Hire...13
 Smuggler's...48
 Spar Shop...36*
 Spit & Polish...37
 S.V.G Hair & Beauty...3*
 Thurstan Hosking...8 & 9
 Tony Express...3
 Trevassack Nurseries..21 *
 Wade, Neil...44
 Weight Loss...35
 Weight Watchers...11
 Wick's Heating...45

*You can pick up a copy of the Pump at those advertisers marked with a * also at Hayle Library, Day Care Centre, Community Centre, Bodriggy Health Centre, Copperhouse P.O., Forbuoys, St. Erth P.O., Connor Downs P.O., and many other place in Hayle.*



Hayle Holistic Beauty Clinic

FOR INDIVIDUALISED BEAUTY AND
 SPECIALISED COSMETIC TREATMENT BY
 AWARD WINNING "RAMA"

All beauty treatments by award winning therapist.
 Specialised cosmetic treatments.
 Collagen, Botox Injections, Thread Vein treatments.
 Gift Vouchers . Free Consultation.
 Special rates for Senior Citizens & School Children.

01736
 755656

SMUGGLERS

IS VERY PLEASED TO ANNOUNCE THE SUCCESS OF OUR RESTAURANT
FEATURING HEAD CHEF ANDREW CLARK AND CREW

COME AND TAKE FULL ADVANTAGE OF OUR NEW MENU

BUY ONE MAIN COURSE AND GET ONE THE SAME, OR A
DIFFERENT CHOICE.... **FREE***

BETWEEN NOON AND 6.30PM
FROM THE SPECIALS BOARDS MONDAY TO SATURDAY

YUMMY SELECTION OF DESSERTS— BOOK IF YOU CAN!

DON'T FORGET THE BEST SUNDAY LUNCH SERVED ALL DAY FROM NOON

WHAT'S ON

23RD APRIL ST GEORGE'S DAY BLAST 3 LIVE BANDS

51 JAZZ CLUB EVERY SUNDAY 1PM

OPEN MIKE NIGHT FRIDAYS FROM 8PM (PLEASE CHECK)

SALSA LEARN OR BRUSH UP TUESDAY 8PM

**FUN QUIZ NIGHT WITH THE BOYZ THURSDAYS 8.45 (not for the
faint hearted)**

REMEMBER SMUGGLERS?...IT'S BACK!

SMUGGLERS IS A FAMILY FRIENDLY FREE HOUSE

**OPENING HOURS NOON TO LAST ORDER 9.30PM 7 DAYS except MONDAYS
& TUESDAYS 8PM CLOSE**

FIND US ON THE B3302 HAYLE TO HELSTON ROAD

SMUGGLERS, CALAIS ROAD, ST. ERTH-PRAZE, HAYLE. 01736 850280

***THE GREATER VALUE APPLIES—NORMAL PRICES RUN FROM 7.30 TO 9.30PM**