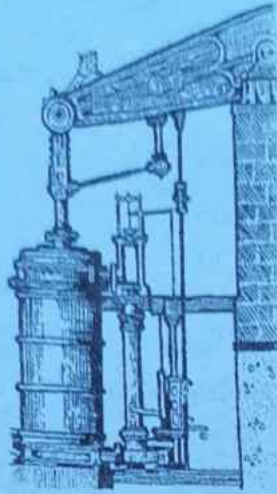
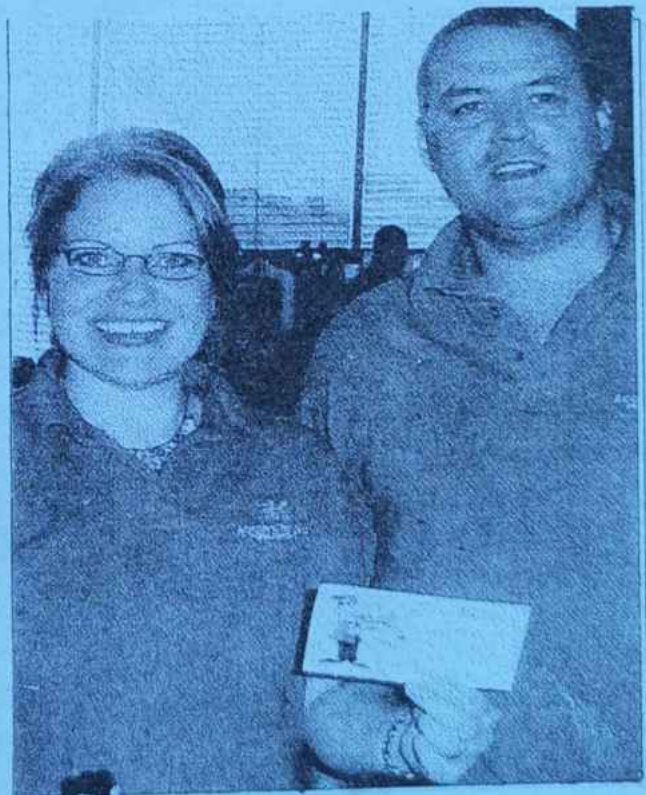
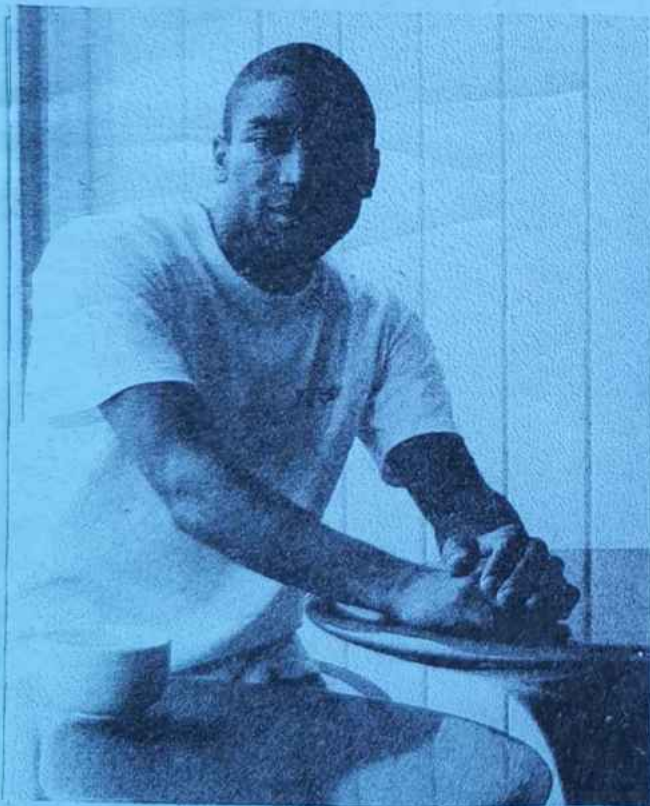


ISSUE 60
OCT/
NOV
2004



HAYLE PUMP NEWSLETTER

Circulation 2,500. FREE copy, please take one. Made possible thanks to our advertisers



Hayle Welcomes Two New Businesses, (see page 3 for details)



*Hayle Pump Newsletter, Unit 14, Pratt's Market,
Chapel Terrace, Hayle TR27 4AB
email: haylepump@theturks.fsnet.co.uk*

If you wish to advertise in the Pump please contact Sarah Turk at the address below.

Editorial Team Members

Tim Appleton

N.A. Bodilly

Goudie Charles (Editor)

01736 757351

Mel Jones

78 Hayle Terrace

Hayle TR27 4BT

Jeremy Joslin, Bajjer Arts

10 Foundry Hill

Hayle TR27 4HW

01736 756756

Jeff & Sarah Turk

35 Penpol Terrace

Hayle TR27 4BQ

01736 752319

Roger Winterburn (Secretary)

01736 756393

You can leave your news, letters, notices etc. at our unit in the market, or with any of the team.

You can also use any of our drop-off points:

At Foundry

Biggleston's Hardware

Colin's Market Garden

Hayle Electronics

At Copperhouse:

Jolly Bodger

David Moyse Clothing

Advertising Rates

Full page (130 x 190mm)£35.00

Half page (130 x 95mm) £20.00

Quarter page (63 x 95mm)..... £11.00

Eighth page (63 x 42mm)£6.00

The Hayle Pump would like to remind readers that items, or articles and Public Notices are accepted as points of view and are not necessarily the opinion of the Newsletter Team. Correspondents are reminded that all material submitted must be signed with their name and address, and if possible, telephone number for validation. This will not be printed if you don't wish it to be. We reserve the right to refuse or edit items sent to us.

**HAYLE PUMP
SUBSCRIPTION SERVICE.**

For those readers who would like a Pump sent to family or friends elsewhere in the UK, or local people unable to get into Hayle to collect a copy, we operate a postal subscription service. Simply send us the delivery name and address **CLEARLY PRINTED**, together with £2.30 to cover the cost of stamps and envelopes, and we will send a year's issues (6 copies) of the Pump as soon as it is published. (UK addresses only—please make cheques/postal orders payable to "Hayle Pump Newsletter")

***Closing date for next issue:
20th November 2004***

Fresh Accent on New Businesses

Accent Music is opening a new musical instrument shop on the ground floor at Pratt's Market (where Nurserytime used to be). Francis and Paula Evans discovered there was a gap in the market, and then found a large "gap" for their business in the rear of Pratts Market! They deal in good value, quality produced music and instruments, which they originally supplied to local shops, schools and bands. When word spread of the quality and great value of their books and music, so too did their customer base and Accent Music now supplies brass and woodwind music to musicians all over the world.

Accent Music publishes music for brass and woodwind soloists, groups and bands. All music is generated on the best music software package available, "Sibelius".

As well as selling instruments, Accent Music has on staff a number of qualified music teachers to teach some of these instruments on the premises in purpose built teaching cells.

They will be open for business from Saturday 9th and on their opening day will be donating 10% of all sales made to the Pirate Trust Hospitals Appeal. Come along and see the great range of products in store from 10am – 5pm Monday – Saturday. For more info. tel: 01209 710681

At 25 Penpol Terrace, Zain Ishmael has opened a stunning new café called FRESH, where the food is

Wanted

Council Exchange
2 Bedroom Bungalow midway
Southampton/ Portsmouth for
Housing Association 1 or 2
Bedrooms at Hayle
Tel: 01489 895102

exactly that. The décor is light and airy, and you can sit on the comfortable sofa and read the papers while you have your refreshments. One of the Pump staff sampled the fare in company with a friend from deepest London, a frequent café-dweller, and he was most impressed. Quite apart from the food and beverages, the view is sensational, and on a warm day you can become part of café so-

ANANDA YOGA



YOGA CLASS

WEDNESDAY EVENINGS

7 TO 8.30PM

@BODRIGGY UPPER

SCHOOL HAYLE

FOR MORE

INFORMATION

CONTACT: EMILY

01736 762934

ciety on the pavement outside.

We wish both these businesses a long, successful and profitable future.

STOP PRESS!

Opening soon: The Little Passions Gallery Working Craft Shop ("The home of the Cornish Dream Fairy"). This will be part of the Foundry Gallery complex upstairs at Pratts Market.

HAYLE TRIATHLON

Hayle's first fully sanctioned triathlon has been completed and was very successful. 99 athletes turned out in force on a beautiful sunny August Saturday to participate on the

gruelling 1000m swim in Copperhouse Pool, a 25 mile bike ride and finishing off with a 6 mile, 3 lap run just for good measure!

The crowds were out in force standing in awe as to what was happening. The first 'official' swimmer out was Matt Thomas from Perranporth, although the guest seal locked in the pond beat him to it. The seal could not continue as he could not sit on the bike properly.

The overall winners were Nathan Jolly of Camborne and Jo Glasson from Hayle. 2nd place was Guy Blackford and Matt Thomas in 3rd. Anne Maskell was the 2nd place lady, followed by Sam Westlake. The first locals home were partners Paul Friday and Jo Glasson who were presented with the Rick Rescorla trophy by Jon Daniels of the Cornish Arms.

BOYAN ENSEMBLE OF KIEV

Sacred Chants and Songs of Ukraine

"The standard of musicianship is breathtaking" Don't miss them!
Music Director: Bohdan Antkiv, Conductors: Yuriv Kuratch, Volodymyr Kuratch

PENZANCE

Chapel Street Methodist Church

Tuesday 2nd November 2004 7.30pm

Tickets £8.50 & £6.50 (concess.)

Sold at : Pencarn Forge, Canonstown, HAYLE...01736 740588
The Spruce Tree, 11 Fore Street, ST. IVES ..01736 794713
West Penwith Music, Union Street, PENZANCE...01736 364440
Reynolds Opticians, 24 Fore Street, REDRUTH...01209 216140
Flip-Side, 2 Coinage Ope, HELSTON.....01326 574400
Bonython Bookshop, 16 Kenwyn St, TRURO... 01872 262886

General Enquiries: 01736 368108 & 01736 331679

The first team back and receivers of the SPAR trophy were Dan Latham, Max Doble and Noel Kingdon. The youngest competitor was Kyle Kearey, aged 17, of Penzance and the senior competitor was Beth Motart of Portreath. There were also prizes given for the fastest disciplines. Thank you also to the Mayor, Marjorie Roberts, for starting the race and presenting some wonderful trophies at the Cornish Arms.

Unfortunately, two cyclists collided with a jay-walking rabbit and were taken to hospital. They are recovering well and intend to compete next year. The rabbit was not so lucky.

I have spent only two months putting this event together and received immense support. I am delighted, however, that the event went well. Obviously there are a few areas to improve on which include timekeeping, transition and the car park. I wish to apologise to the residents of Clifton Terrace.

To have an event like this in Hayle is fantastic. We have excellent facilities which should be used more often. Small covert triathlons used to be run, so I suppose this isn't the first event. Hopefully, I have not offended anyone.

May I take this opportunity to thank the following, without whom none of this would have been possible:- Jon Daniels of the Cornish Arms, Nick Haydon of SPAR, David Mungles of Jewson, Pam and Mike from Multisigns, Julian from St Ives Bay Holiday Park, Trevor from Down the Line, Paradise Park, and Ginsters who stepped in last minute with lots of pasties.

TIMELESS VIDEO

a **NEW** video editing service

One day you will get around to editing your home movies. Right? Wrong! Admit it. It's just too much hassle, isn't it?

Give me your tapes and I will turn them into videos which you will want to watch at least more than once! Great **Slide Shows** of your still images can also be created with titles and music.

For further details ring **01736 752982**

A big thank you to Hayle SLSC, Hayle Canoe Club, Max Doble, Steph Brown, Pete Mackley, Darren James, my husband Crispin and everyone who helped with marshalling. Also to Hayle Town Council and PC Darren Burdaky who helped enormously.

Proceeds from the triathlon have been used to purchase new equipment for Hayle Town Swimming Pool.

We are holding another bigger, improved event next year and are always looking for more sponsors and help with the organisation. If anyone wishes to help please contact Karen on: 07843020983. Thank you.

Karen Hayden

Which painter was a reptile?

El Gecko

TERRY AND ROBB LELLO TAKE TEA WITH HER MAJESTY!

The highlight of this year so far was the invitation to attend the Royal Garden Party at Buckingham Palace. This is a once in a lifetime opportunity, and I looked forward to choosing my outfit and preparing for the big day, which was similar to a wedding but on a much larger scale. The thing to bear in mind is to wear comfortable shoes, there is a lot of standing around, and not to worry anxiously about your outfit, there will always be someone with a bigger more expensive ensemble, trust your own judgement that you know exactly what to wear and relax and enjoy the day.

Standing at the Palace gates, Robb and I observed Prince Philip

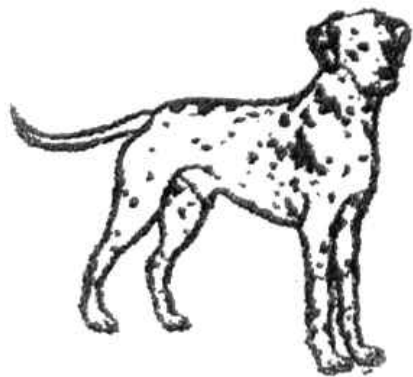


come tearing into the grounds in his private taxi; apparently he likes to travel incognito but as most Londoners are aware of which taxi he uses, with its private number plate and an unusual brown colour, it sort of defeats the purpose a little.

The palace was certainly worth the

DYLAN'S CAFÉ

6-7 Foundry Square, Hayle, Cornwall
Tel. 754809



All Day Breakfast
Fresh Cooked Lunches
Cream Teas
Vegetarian Menu
Children's Menu

Proprietors Alan & Rosemary Cummings

visit, and we would have liked more time to take in the amazing history and artefacts. It is a magnificent building. Walking into the gardens we were surprised to see numerous samples of corgi poo, and I felt relieved I had not worn high heels!

The gardens were beautiful, and there were several tents in place, each one for a specific function. I particularly liked the rose garden with many examples of shades and aromas. The guests wandered around, and enjoyed sandwiches and little cakes from the tea tent. I have to say the tea was a rather nice flavour and not too dissimilar to Co-op 99 tea!

The Queen arrived wearing a yellow and white outfit, and graciously chatted and mingled with the guests; I wonder how she manages to keep smiling year after year and not feel tired of being stared at.

It was a day we would not have missed, and quite surreal with the sun shimmering through the trees and everyone in their fine clothes, it could have been another time and for a while it was easy to forget which day or year it was.

Back on the train, we looked forward to our little cottage and a nice cup of tea; it was good to come home again.

Terry Lello



KIND OF CORNISH



“Sacred Landscapes”, by the violinist/keyboard player Sue Aston, is, she says, music inspired by the landscape of Celtic Cornwall. She is joined on the album by her hus-



Lowe & MacLeod

Comprehensive Tree & Garden Services

Fully Qualified & Insured

**Contact: Euan MacLeod
01736 762934
07970485321**

band Phil Aston on electric/acoustic guitars and percussion, with various other musicians added on some tracks. Amongst these is the special guest Gordon Giltrap on 2 tracks on acoustic and MIDI guitars. All the music is written by Sue and Phil Aston, and insofar as instrumental music can do so, the music undoubtedly captures some of the Celtic atmosphere of Cornwall, and the tunes have colourful place names such as ‘Dozmary Pool’, ‘Waltz of the Merry Maidens’, ‘Warleggan (The Singing)’. Many of us have our own aural impression of the Duchy, and in my case, the very name Cornwall conjures up something somewhat wilder than the music on this album. That, however, is only one person’s opinion, and this CD will appeal particularly to those who enjoy evocative,

ambient music. (61 mins, £10.00.)

A confession – my knowledge of 'ornithology' is confined to the fact that it is the title of a wonderful original composition by the legendary jazz saxophonist Charlie Parker. Living in Hayle, however, one cannot fail to notice the armies of twitchers (or perhaps these days it's birders) who populate the estuary area at certain times of the year, and these good folk constitute a potential audience for my second CD, "Sea Sounds and Bird-song from the Isles of Scilly". This was recorded on five Scilly islands, namely Tresco, St Martins, St Agnes, Bryher and Samson; as the sleeve notes point out, the fascinating thing is that, although these islands are but a few miles apart, each collection of

birds has its own individual signature in sound, recorded against the ever changing voice of the sea. The bird-watchers and bird lovers amongst us could well liven up a miserable winter's day (even in Penwith we have them!) when they are stuck at home and they want to conjure up nature's own magical sounds.

74 mins, £10.00.)

Both CDs, and many other items by Cornish artists, choirs and bands can be obtained from:-
West Penwith Music
Union Street
Penzance (Tel. 01736 364440)

Goudie Charles

What key do you get when you drop a grand piano down a mineshaft?

A flat minor



J C ELECTRICAL



Your complete 24hr Electrical Service

City & Guilds Qualified
Tests to 16th Edition BS7671

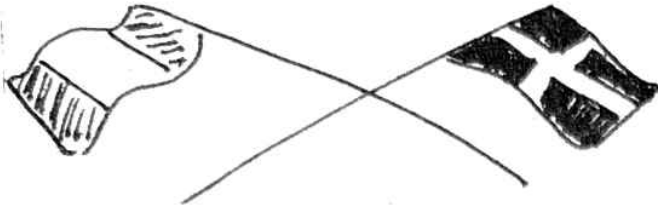
Rewires, New Build, Lighting, Extra Sockets,
Showers, Heating

Prompt Reliable Service
All Work Guaranteed

Free Estimates

Hayle 01736 754543
Mobile 07739 577 549





HAYLE TWINNING ASSOCIATION

On Friday 10th September Hayle Twinning Association members left Hayle early in the morning to catch the 8am ferry from Plymouth to Roscoff for their annual visit.

There were 30 travelling by Williams Coaches and 6 travelling in their own cars. After a good crossing we made our way to Pordic where a welcoming reception was waiting for us. This

was by the Pordic Twinning and Council in La Halle de Fete, the hall in which the twinning charter was signed in April 1997. We were greeted by Jean-Francois Corbel, the president of Pordic Twinning, the committee and the 22 host families. Here everyone met friends old and new, it is very good that on every visit now Pordic and Hayle are introducing new faces to these exchanges, which shows that our numbers are increasing, not dwindling.

At 6pm the Maire Guy Fonteix welcomed us to Pordic, followed by Jean-Francois Corbel. Our chairman Maurice Trathen's reply was followed by a speech of thanks from Hayle Mayor Marjorie Roberts, who said how good it was to see that the bonding of the two towns was growing stronger each year. She then pre-

J R H CARPENTRY

Joinery & Building Renovation

**KITCHENS, WARDROBES,
DOORS & WINDOWS
FITTED. DECKING &
PERGOLAS.**

ALSO PLASTERING
BRICKLAYING AND
GENERAL REPAIRS.



Free estimates

WITH OVER 20 YEARS EXPERIENCE, I
WILL DO SOME OF THOSE SMALLER
JOBS IN THE HAYLE AREA THAT
OTHERS TURN DOWN.

Tel 01872 274673

Mobile 07931 281952

sented the Maire with a framed print by David Dyer of the beach and Godrevy Lighthouse. This was warmly received, and the Maire then in return presented Marjorie with a specially compiled large and unique photo album of places of interest old and new in and around Pordic. Now the evening was free, so it was off for a meal with our hosts, and a chance to get to know each other.

On the Saturday morning we met for a trip around the Cote de Granite Rose, then on to Plouman for a little shopping before going to Tregastel for a picnic lunch which was all supplied by our hosts – yes, the wine as well! We then visited Le Plemeur Bodou Telecom museum for a 2 hour conducted tour. This was very inter-

R	ROY
H	HAYES
G	GLASS
<p>For all your glazing requirements</p> <p>Over 40 years experience</p> <p>Rear of Central Garage Hayle</p> <p>Tel/fax: 01736 754023 Mobile: 07880 530 795</p>	

esting, especially the bit about the first submarine cable that was laid between Calais and Dover in 1850. This only lasted a matter of days because a French fisherman caught the cable in his net and cut it, when he saw the copper he thought it was gold, so that finished that attempt, it was repeated in 1851, that lasted one year.

After returning to our hosts' homes we got ready for the evening meal at La Ville Guyomard in St Briec. This was attended by 104 people, and after the meal a great friend of ours Jacqueline Turpin handed out verse sheets and in a short time had everyone singing "Frere Jacques" and London's Burning", and then dancing to Breton music.

Sunday's programme was split in two; some of us took a four hour walk round the coastal path, and the remainder shopped at a local market. After lunch with our host families, we attended a Breton Boules party at the Pordic Boulodrome. Then after a drink and a chat in the pub, we went home to our host families to pack our bags.

The return journey, which was accompanied by rain, started at 9.30am on Monday 13th. After leaving Pordic we visited Leclerc on the outskirts of Morlaix for some final shopping, followed by the Red Cash Wine Cellar near St Paul de Leon before arriving at Roscoff for the ferry to Plymouth, and home. At Hayle, everyone was tired but happy and looking forward to next year's exchanges.

If you are interested in joining us call me on 01736 753341. We meet once a month on the second Tuesday at the Passmore Edwards Institute, at 7pm.

Maurice Trathen

Charles Crowle

Following our tributes to the late Charles Crowle in the last issue, we have received many expressions of regret, both written and verbal, from our readers. We hope that at this sad time Mr Crowle's family will take some small comfort from the knowledge that he was held in such high esteem in the local community.

Hayle Pump Team

Well Met.

Edna: You're looking like a dyin' winnard.

Mary: No wonder with this ole artheritus dunno what do with myself.

Edna: 'Ow don't ee see a doctor en?

Mary: I did and ee gave me some aerobatics, which I can't take.

Edna: Why can't you take them?

Mary: I s'pose to take them before breakfast and you know I don't eat breakfast.

Edna: Well take them before your dinner.

Mary: What! And ave they down Day Centre think I'm one of they drug haddocks.

Edna: I dunno what say more than stay in the warmth, watch telly bit that will take your mind off.

Mary: Telly is actin up, it's like me – worn out.

Edna: Why don't ee get another?

Mary: Thas no good, we wooden know nobody on it, we bin watching the same one all they years, we're too old to look at faces we never saw before.

Edna: Did you see The Robbery, I thought that was good.

Mary: I did see that and I saw that man take that key. I rang the police and told them about it, they said it wadn't real just didn't want to bother.

Edna: Is that true your John was stopped for speedin'?

Mary: Thas another thing, Police said ee was goin' 50 miles an our, ee couldn't ave been, ee was only out ten minutes.

Edan: 'Ow do ee get on with 'is com-

The Mad Hatter

Tearooms and Bed & Breakfast

Breakfasts, Lunches, Snacks,
Cream Teas & Home-made Cakes.
Tea Garden. Dogs Welcome



**CHRISTMAS MENU AVAILABLE. BOOK
YOUR WORK OR FAMILY PARTIES
NOW!!** For further information call Pauline on

01736 754241

Homely atmosphere with friendly people. Open all year Mon–Sat. 10am–5.30pm
Double, Twin & Family Room. Overlooking Hayle Estuary with TV, Tea & Coffee

73, Fore Street, Copperhouse, Hayle TR27 4DX Tel./ Fax. 01736 754241



Moving House?

Whether buying, selling or re-mortgaging

For a FREE estimate

Phone Julie Blewett on

01736 752424

Or call into our offices at
75 Fore Street
Hayle

puter?

Mary: Tell ee the truth, I don't think ee watch it much cause ee's always sayin ee can't get the web, well I cleaned that room out last week, so I know there's no webs in there.

Edna: Well I better get going, I'm going to buy some pasties for tea.

Mary: I dunno 'ow you eat bot meals, you can't beat home cooking. I'd better be off, I'm goin get some fish and chips.

Dorothy Cook

HAYLE IN BLOOM 2004

Bristol Flower Show was the venue on Friday 26 August for the results and presentations of South West in Bloom, or, in our case, Hayle in

Bloom which was judged on Friday 16 July 2004. We assembled on the coach along with colleagues from Penzance and St Ives at 7.30am and arrived at Bristol at 12 noon.

The presentations began at 2.45pm and Hayle was awarded a Silver Gilt. We were all disappointed but on reflection we did very well considering the storms we had so the flowers were not at their best on the crucial day of judging. We can do better next year especially if we can encourage more shops to display hanging baskets as these play quite a large part in the judging. Hayle has only 2 paid gardeners from P.D.C. with Bob as a third gardener who works with our gardeners Matt and Mike entirely on a voluntary basis and for which we are deeply indebted.

We are hoping to start up the 'Adopt a Plot Scheme', this is where local residents maintain a plot under the guidance and advice of our gardeners who will also supply the plants.

Our aim is to win the coveted 'Preece Cup' and to help us in this aim we are delighted to be able to welcome Mr John Wheatley, a judge for Britain in Bloom, to our meeting on Tuesday 23 November 2004. He will give us the results of the markings for Hayle as well as constructive advice on how we can improve our town next year. Anyone will be welcome to the meeting and we will be delighted to have any organisations who wish to come. (The venue is still to be arranged.)

The Judge was very impressed with the involvement of the community and Penpol School and also the pri-

vate gardens of residences. They are really beautiful and certainly enhanced our town as did the fantastic displays of hanging baskets at the Cornish Arms, Loggans Fish Bar and the Cornubia. Thank you all. Thanks also to Paradise Park for giving their permission for a photo session and to the Bird in Hand for the very delicious buffet we all enjoyed at the end of the judging.

The one big highlight of our trip to Bristol was the announcement of the results of the schools painting competition with Zoe Gilbert from Hayle Community School winning a super art chest as her prize for being 1st in the age 12-16 years group and Finn Bullock from Penpol School winning a second prize in the up to 6 years group. Finn's prize is being donated

by the Salt Gallery here in Hayle. The painting competition was open to all schools in the whole of the South West, so we are very proud of Zoe and Finn for this great achievement. Many congratulations to them. Thanks too to Bob Devereux for agreeing so willingly to judge the paintings.

*Marjorie Roberts, Chairman,
Hayle in Bloom*

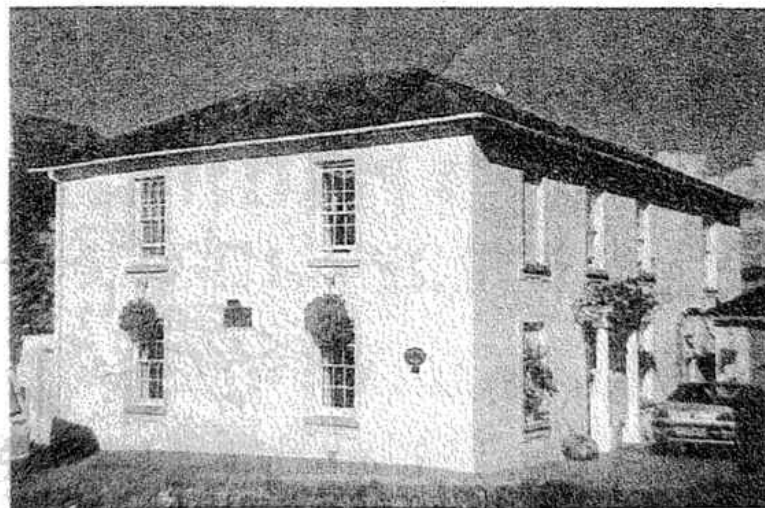
Jesus said,
I am the good shepherd.
The good shepherd gives
his life for the sheep.

John 10 v 11

CRANFORD HOUSE
BED & BREAKFAST
OPEN ALL YEAR – CHILDREN WELCOME

*ALL ROOMS
EN-SUITE*

*NON
SMOKING*



*ALL ROOMS
EN-SUITE*

*OFF ROAD
PARKING*



PETER & PEGGY DARLOW

01736 752618

Foundry Hill * Hayle * Cornwall * TR27 4HW
cranford-guesthouse@talkgas.net



Brookvale

Residential Care Home for the Elderly

Family run home, by the resident proprietors Mr & Mrs Broadbridge & Mrs Pleasants RGN, which prides itself on a personal and caring environment. Situated in the centre of Hayle close to all amenities.

Private and DSS residents welcome whether short or long stay. Fully registered with the CCC, and a member of the Cornwall Care Homes Association.

- all necessary care & assistance supplied
- large garden and patios
- two lounges & spacious bedrooms
- full 24 hour care & central heating
- weekly hairdresser & chiropodist
- domiciliary services, day care & M on W

6 Commercial Road
Hayle, Cornwall TR27 4DG

Telephone: 01736 753608

NICK THE KNOCKER

*My name is Nick and I live here
Deep down inside a mine
You might find it very strange
But I just like it fine*

*It's quieter tho' since I was born
A hundred years ago
Then the miners with their lamps
Were working here below*

*We Knockers plagued them all the
time
Teasing and frightening
Grabbing pasties from their croast
And hiding everything*

*The tricks we played were sometimes
cruel
Like when I moved the post*

*And led the men around and round
Until they all were lost*

*But Knockers tho' mischievous
Are never really bad
They just get lots of harmless fun
In making humans mad*

*We were so happy in those days
Now all is silent – gone
And we just have each other
To play our tricks upon*

*If some dark night you come along
And listen carefully
You'll still hear us brave Knockers
As in days that used to be*

*For we are waiting for the time
The tinnerns come again
And make the mines alive once more
With songs of Cornishmen.*

Nicolette A. Bodilly



*I DIDN'T GIVE YOU A
DIRTY LOOK. YOU
WE'RE BORN WITH IT*

HAYLE DAY CARE CENTRE

21 years of service

In 1983 the Day Care Centre situated at Commercial Road Hayle was a new building. The founder and first chairman Philip Smith and his many stalwarts had worked very hard for the preceding two years to acquire a central location and funding for a state of the art day centre for the elderly. Penwith District Council was persuaded to give up a piece of the car park in Commercial Road next to the library and the funding was found, namely the first urban aid grant in the county of Cornwall. Mitchell's of Porthleven had the contract and the

day care centre was built.

Over the next 21 years many changes have been seen. Extensions were built, the first being the Philip Smith Annexe in 1993 which provided the first dance floor in the public sector which has been used by many a light footed Fred Astaire and Ginger Rogers wannabee. A new bathing facility was constructed so that those with less agility could have the pleasure of a long soak.

In 2001/2 the complete upgrade and alteration of the kitchen and the provision of a new store created much needed space for the ever-increasing demands on the centre.

The centre gained charitable status at an early stage enabling it to de-

Tel. 01736 752119

open 10.30/1.00pm & 2.00/5.00pm

Mob. 07730 733263

seven days a week

TREVASSACK NURSERIES GARDEN CENTRE HIGHLANES HAYLE

Christmas trees fresh cut 4ft—16ft from £5.00

Noble non drop from £13.00. Holly wreaths

*Primroses * Pansies * Violas*

*Wooden troughs * Log edging * Decorative baskets*

*Sundries * Glazed Pots * Shrubs etc.*

velop as an independent charitable trust. Today it is run by a management committee drawn from the community of Hayle. The Trust owns the building and its contents and runs it for the sole benefit of the elderly and disabled of Hayle and district.

Funding comes mainly from Cornwall Social Services budget; the centre has an independent contract with them to provide day care facilities for named clients. This contract does not compromise their strongly fought for independence. The staff, volunteers and clients continuously raise money for the benefit of the centre and have done so since the first day of opening.

Alongside the funding and running of the centre has been the committee raising the necessary funding for the

independent transport. Minibuses have been provided over the years enabling easy access to many hundreds, even thousands, of clients.

The Trust has only had two chairmen in 23 years and I am proud to have taken over from the founder Philip Smith who with others had a dream that I have been able to continue, providing one of the best independent day care centres in Cornwall. The friendliness of the staff and the fellowship amongst all of those people who have used the facility is in my opinion second to none. The proof is in the pudding, we have completed 21 years providing a varied service to the community meeting the changing needs of the elderly, from a basic lunching facility with



the **WITCH** report

gives **COLIN'S MARKET GARDEN**
TOP MARKS!!



OUR HALLOWEEN
SURVEY SHOWS THAT



9 out of 10
PUMPKINS FEEL

AT THEIR BEST WHEN SOLD HERE!

SIMILAR RESULTS WERE OBTAINED WHEN ASKED OF ALL
FRESH FRUIT AND VEGETABLES

ASK THEM YOURSELF AT COLIN'S MARKET GARDEN, off FOUNDRY SQUARE

SILLY SURVEY CONCOCTED BY



BAJGER ARTS 01736 - 756756

bought-in frozen meals to a fully functional kitchen with the excellent staff providing in excess of 60 prepared meals a day. The bathing of clients runs at dozens a week, and the continued presence of the podiatry facility thanks to Cornwall Healthcare Trust and the many other groups that use the centre on a regular basis provide a valuable venue for the elderly and disabled to make their lives more fulfilled.

Thank the community of Hayle on behalf of past and present trustees for the support that you have given the centre in whatever way it may have been. This is Hayle's day care centre owned by the community, run by the community for the benefit of the elderly and disabled in the community. Long may it continue to do so!

We are proud to have reached our 21st birthday of providing a very valuable service, another 21 years is possible with help and support from the community in running the centre and providing funding for the day to day upkeep.

With many thanks to so many people over the years, I am proud to be Chairman of the Hayle Day Care Centre Trust.

David Raymer

"Two Eskimos sitting in a kayak were chilly, but when they lit a fire in the craft it sank, proving once and for all that you can't have your kayak and heat it."

(Submitted by D.H. Green)

PENPOL GARAGE

IN TUNE WITH TECHNOLOGY

**ALL MAKES OF VEHICLES
REPAIRED & SERVICED.
WE ARE NOW ABLE TO OFFER
CRYPTON PROSCAN
DIAGNOSTICS**

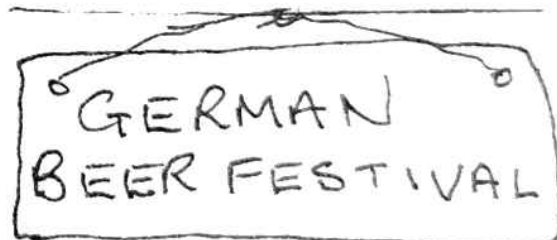
THIS IDENTIFIES ENGINE MANAGEMENT
FAULT CODES, ABS & AIR BAG FAULTS
SERVICE LIGHT RESET. ETC.

**FREE-FIT TYRES & EXHAUSTS
CAR AUDIO INSTALLATIONS
MOT PREP. & REPAIRS**

**PERSONAL ATTENTION &
PROFESSIONAL SERVICE**

TEL:01736 757011

MOB:07971 842908 (ANYTIME)



ICAN'T BELIVE
ITS NOT BITTER



Spit & Polish

Vehicle Valeting Specialists.

Unit 10C
Central Garage Hayle.

*From a car wash to a full
Valet, Ian and staff would
like to welcome customers
old and new.*

Phone 01736 753332

PLANTS ON THE TOWANS NO. 5 - HAWTHORN

This wonderful little tree grows up to 30 ft in some places, but here, mostly in hollows, 6 ft is average. The hawthorn genus (*crataegus*) belongs to the rose family – hence the sharp thorns.

The masses of white flowers in May or June give off a smell like rotting meat which attracts flies who do the pollinating. Around September the hawthorn is covered in little red berries, and according to a medieval saying, the quantity of the berries is in proportion to the severity of the winter to come. I have recipes for jelly and for wine using these berries

or haws but the most important use of this plant is in the medical sphere.

The flowers, leaves and berries are used to strengthen the heart and nerves. A report in the British Medical Journal showed that the berries reduced high blood pressure caused by hardening of the arteries and kidney disease, while research work published on the effect of the flowers showed that they significantly improved the health of patients suffering from an "ageing heart" and those that had heart-valve disease. The extraordinary feature of this herb is its ability to both lower high blood pressure and to restore low blood pressure to normal. Hawthorn is also valuable in treating angina, irregular heartbeat, spasm of the arteries (e.g. Reynaud's disease), and insomnia of nervous origin. It has been proved that no side effects need be feared even if the tea is drunk over an extended period.

This tough little tree has been the subject of some beautiful paintings by local artists, and one in the middle of the towans is the site of a memorial for someone's menfolk lost in the last two world wars.

Michael Locke



Pedal Back the Years

As previously mentioned in the Pump, Pedal Back the Years is an innovative project supporting people who want to get more active, more often. The scheme provides guided cycle events on a number of beautiful cycle routes across the

county. All events are designed to help those who have not cycled for a long time to regain confidence on a bicycle. If you don't have your own bike, then hire equipment is usually available. The routes are short, fairly flat and easy to cycle; events are leisurely in pace with rest stops and a refreshment break. Two volunteer support riders attend each ride. All rides are every 2 weeks, departing at 12 noon, each lasting approximately 2 hours. Events take place throughout Cornwall, but here are some of those nearer to Hayle.

St Michael's Mount (Alternate Sundays)

The Route: Penzance to Marazion around Mounts Bay and return.

Level of Difficulty: Easy, flat, off road cycle path (6 miles).

Come to **Footsteps**
27 Penpol Terrace, HAYLE
01736 757735

for fashion & comfort.
We have a wide selection
of winter boots and
cosy slippers.



Meet at: Pedals Cycle Hire, Wharfside, Penzance (01736 360600).

Facilities: Parking: Opposite Cycle Hirer (£1.20). Toilets and refreshments at the Train Station.

Hire Equipment available: Standard & mountain bikes.

Event Dates: Oct. 10th & 24th, Nov. 7th & 21st, Dec. 5th & 19th, Jan. 16th & 30th.

Starting Time: 12 noon.

RIXON

Property Services

All Aspects of Property Improvements Undertaken

Windows, Doors & Conservatories
Full Range of PVC & Timber Products

Re-glazing & Stained Glass

Fascias, Soffits & Guttering

All Products are Designed to Individual Specifications
10 yr. Guarantee

Contact Alan for a Free Quotation and Advice on:

www.anrixon.co.uk

Tel: (home) 01736 757031

Mobile: 07789 641075

FENSA

Registered Company

12 Chenhalls Road, Hayle TR27 6HJ

Tehidy Country Park (Alternate Sundays)

The Route: South Drive through the park to Oak Wood and East Drive.

Level of Difficulty: Moderate, off road cycle paths (5 miles).

Meeting Point: South Drive car park, South Tehidy.

Facilities: Free parking at South Drive car park. Toilets, café at South Drive.

Hire Equipment (by prior request to the Project office please): Hybrid Bikes

Event Dates: Oct. 3rd, 17th and 31st, Nov. 14th and 28th, Dec. 12th, Jan. 9th and 23rd.

Starting Time: 12 noon.

Loe Bar (Alternate Saturdays)

The Route: From Helston through

Penrose Estate woods past Loe Pool to Loe Bar and return.

Level of Difficulty: Moderate, off road tracks (5 miles).

Meeting Point: Loe Valley car park, Helston.

Facilities: Parking, toilets nearby.

Hire Equipment: Hybrid bikes available (please book in advance through the PBTY office).

Event Dates: Oct. 2nd, 16th and 30th, Nov. 13th and 27th, Dec. 11th, Jan. 8th and 22nd.

Starting Time: 12 noon.

For information about the scheme and further details of these and other rides throughout Cornwall, please contact:-

Pedal Back the Years, John Keay House, Tregonissey Road, St Austell

**HAYLE ELECTRONIC SERVICES
BOTTOM FLOOR, PRATTS MARKET
FOUNDRY SQUARE 01736 754244**

For all your:

*DIY ELECTRICAL

*BATTERIES

*DOMESTIC APPLIANCE REPAIRS

*TV & VIDEO REPAIRS

*VACUUM BAGS

*AERIALS

*LAMPS

* ELECTRICAL WORK

QUALIFIED ELECTRICIANS

Open Monday to Friday 9—5 Saturday 9—4

We would like to inform you the business will be under new ownership from mid October 2004. It is staying in the same family but will be run by Nigel Jefferies.

Gayna & Wayne would like to thank all their customers. They will still remain in a back seat capacity, the shop and the services it provides will stay the same, and your continued support will be welcomed

PL25 4NQ. Tel. 01726 627816
Email:
david.readman@centralpct.cornwall.nhs.uk
Or visit the new website:
www.pedalbacktheyears.info



MILLPOND VIEW CARE HOME OF HAYLE

Warmly invites you to join us for
'A HARVEST CELEBRATION'
15 October 10.30am
Song & Solo musical entertainment
Followed by a pasty lunch & raffle
Limited tickets £1.50
Tel. 01736 752759



The View from the Steeple

Well, in spite of a few more warm days, my deckchair has now been put back in storage for next summer.

The 6th Annual Art Festival kept us busy from the middle of July until the beginning of August, with the work of ten Penwith painters and three potters being on show this year. Our regular exhibitors such as Glyn Macey, Robert Jones, Rose Hilton, Jim Whitlock and Bob Devereux were joined by Dellan Cookson and father and son potters, Alan and Adrian Brough. Hayle Flower Club once again excelled themselves and decorated the church with their beautiful floral arrangements.

This year, because of changes to

NEIL WADE MOTOR ENGINEER CENTRAL GARAGE 10A HAYLE TERRACE HAYLE

M.O.T. TESTING STATION
DIESELS & CATALYSTS
TESTED*
SERVICING*REPAIRS*
WHEEL BALANCING*
EXHAUSTS*TRACKING*
TYRES*BATTERIES

HOME: 01209 610651
MOBILE: 07990 981546
WORK: 01736 756512



Hayle Heritage Festival Week, there were no evening concerts during the Art Festival but both the Male Voice and Ladies Choirs were in good voice for the Mayor's Civic Service. They were joined by the Godrevy Singers and a brand new musical ensemble called Hayle Samba, who filled the church with such a lively sound that even the most staid members of the congregation were foot-tapping in time to the infectious Latin beat.

As they rehearse at St. Elwyn's on a Wednesday evening, I am now getting the best of both worlds, musically speaking. On a Monday I can relax with the classic calm of the Penwith Deanery Choir and then set the belfry alight with the red-hot rhythms of Hayle Samba in mid-week. It's this sparrow's idea of heaven!

Soon after the exhibition had been

YOUR LAST WILL AND TESTAMENT

Is your last word

Have you yet stopped to think what would happen to those around you in the event of your untimely death? What happens to your home, your savings, your personal possessions, and quite importantly, who would take care of your dog or cat or other pets?

Untimely death can cause those nearest and dearest to you a great deal of heartache and financial expense. Making a simple Will, or up-dating an old Will, in clearly understood plain English, can help those who survive you cope with their loss if you clarify your wishes in advance. A simple Will does not cost a fortune, and once it is done, you can get on with the business of living. It makes good sense, - make a decision - Make a Will.

Contact Jennifer Jackson

JENNIFER JACKSON

**QUALIFIED LEGAL
ADVISOR**

**SENSIBLY PRICED LEGAL ADVICE AND HELP
IN PLAIN ENGLISH**

**HOME VISITS DURING OFFICE HOURS AND AT
WEEKENDS**

**FRIENDLY AND CONFIDENTIAL
SERVICE COVERING A WIDE
RANGE OF LEGAL AND LAW
RELATED TOPICS**

**01736 751718
0778 682 1116**

**32 RIVERSIDE,
ANGARRACK
HAYLE TR27 5JD**

all packed away the heavens opened and the deluge which fell on Hayle would have given Noah a few problems. Downstairs the water rose flooding the kitchen and the Parish Office with all manner of effluent and this sparrow was heartily thankful to be living 60 foot up in the belfry. To make matters worse S.W. Water couldn't find us on their drainage system, but further inspection of the pipes outside found the fault and fixed it, so we are now back to whatever passes for normal at St. Elwyn's, albeit with a few alterations to the indoor plumbing.

The work was completed just in time for a very welcome return of Rachel Mia Allen for her second art exhibition entitled "Elements." I always enjoy the first night previews. So many tasty tit-bits to keep a sparrow's

spirits up not to mention the calorie count!

The swallows and martins are busily packing in readiness for their long flight south for the winter, so apart from the resident jackdaws and a few starlings who drop in now and then, things will be quieter around the Bell Tower for a while.

It's time to put my feet up and get snug for the autumn. I might even register for a course in ark building, just in case!

See you all again soon,
The Sanctuary Sparrow

Did you hear about the man who had his ladder stolen? He said that if it wasn't returned, he's have to take further steps.

SUITES & SOFAS CLEARANCE WAREHOUSE

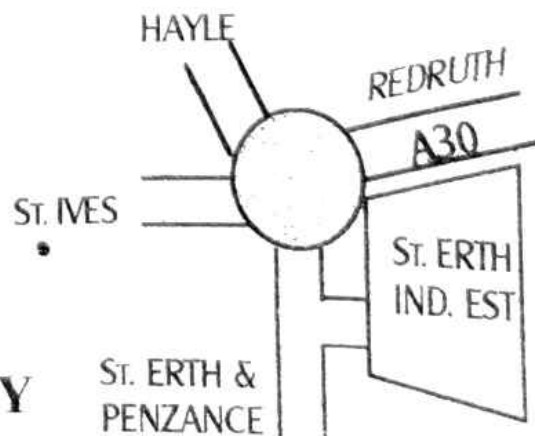
UNIT P, ST. ERTH INDUSTRIAL ESTATE, CANONSTOWN, HAYLE
 BANKRUPT STOCK, MAIL-ORDER RETURNS, FACTORY CLEARANCES,
 END OF LINES ETC.

SUITES, SOFAS, ARMCHAIRS & COMBINATIONS
 AVAILABLE AT CLEARANCE PRICES

FOR DETAILS OF OUR CURRENT OFFERS
 AND TO VIEW AT ANYTIME
 PLEASE PHONE

07779 760686

**OR VISIT OUR WAREHOUSE
 BETWEEN 11am – 4pm DAILY
 WHEN WE'RE OPEN TO VIEW**



Letters.....

Letter

I am the owner/director of the Corn Mill Recording Studio out at Roseworthy beyond Connor Downs and all the way up Old Mill Lane. As I am a bit out of the way not many people know yet of my studio here, although I am recording quite a few local bands and musicians at the moment. Just two weeks ago we had BBC TV filming here for inclusion in their "Cash in the Attic" programme for broadcasting in late October or early November. The Hayle based rock group Reloaded were filmed recording tracks for their forthcoming CD and we had a very enjoyable day. Reloaded regularly play the Bird in Hand pub etc. and other pubs and clubs in the area. Although we do not have a definite broadcast date for the programme I thought your readers would like the chance to see local performers and places on national BBC1 TV. It will also be screened later on in the USA, Canada, Australia and Europe.

Steve Nunn, C.M. Studio, Old Mill Lane, Roseworthy 01209 719481

Letter

I should like to thank through the Pump all those who gave me prizes for the draw and raffle for the Hayle Rose and Cabbage this year. You were very generous which helped to make it a great show. Again many thanks, it was very much appreciated by all.

Sincerely, Doreen Nicholas

Letter

Well, it's still here, thank goodness. Phew! After 25 continuous years of search, and finally last year finding that crock of gold (i.e. Hayle's beautiful beach) it is a joy to revisit - arduous though this might be due to the ongoing lack of signposts.

But, oh dear. This time I thought it would be nice to view the spectacular beach from the other side of the harbour. Starting from the beautiful Jubilee Gardens at the front of the viaduct, I fought my way past the weir to the end of the spit through brambles, rubbish, dog excrement, neglect and decay to be rewarded with a wonderful view of both sides of the estuary. Stunning! But what a fight.

Another Hayle secret, I wonder?

Christine Clyne (address supplied)

Letter

Because I have nowhere else to park my car, it has to be parked on the main road. On Saturday September 4th, a working day for me, when I went to the car I found that one of my wing mirrors had been forced off the car and thrown into the road where other cars had driven over it forcing it to smash.

I bought my car second-hand last May since when three other attempts have been made to break off the wing mirrors. From speaking to the neighbours, other cars had also been damaged that night. My neighbour next door refuses to paint her front wall these days because it makes a target for foot marks, pen marks and

eggs and she has also had plants pulled up from the garden and tossed into the road. I have also had an ornament stolen from my garden which was there for all of a week. And on many a weekend night, it is common to find vomit and other kinds of mess inside the gate. I would suggest to the police and the Council, Hayle is not such a pleasant place to live in and would benefit from more CCTV cameras and police patrolling which I believe would at least be some sort of deterrent to the mindless morons who inhabit our streets at night.

Name and Address Supplied

Letter

I see from issue 59 that there is a proposal to install street lighting across part of Hayle Towns. I would extend a word of caution. We have been holidaying in Gwithian since the 1960s and part of the reason for coming here is that the countryside and beaches are almost as beautiful now as they were then.

Many of our extended family and friends who come here for up to 6 weeks each summer live in towns and cities across the country. One of the few times they get to experience the true night sky, its stars and constellations, glow worms and the sound of crickets is when they arrive in Cornwall. Light pollution is now so prevalent where they live that most of the children and some of the adults have never seen a shooting star.

We ourselves live in Pembrokeshire and a similar application for street

lighting to a small coastal village near us resulted in an upgrading of the road access, large, unsympathetic street lights which stay on all night and a total change in character to the village. The road is now more dangerous due to increased vehicle speeds and the glow from the village can be seen from miles away.

As someone who lives in a little village I do realise that summer visitors don't experience the full picture but, since tourism is such a bedrock of Cornwall's economy, take great care that you don't drive away those who come here to enjoy its breathtaking beauty – at night as well as day.

G. Thomas, Cri'r Gylfinir, Lawrenny, Pembrokeshire SA68 0PN

Letter

I would like you to publish a big thank you to all who supported the Godrevy Singers and David Prowse in every way at the concert in aid of the Children Hospice South West on Friday night 20th August 2004 which raised a grand total of £1000 after all expenses were paid. The cheque of £1,000 was presented to the hospice the same night and a special thank you to Leslie and the Hayle Day Centre.

Hamilton Hawkins, on behalf of the Godrevy Singers



**PLEASE SUPPORT
LOCAL TRADERS**

Hayle Decorative Lighting News

Well, it doesn't seem that long ago we were taking them down, now it's almost time to start putting the lights up again, that could be a quiz question, what do Hayle Lights and painting the Forth Bridge have in common? Answer they are never finished.

Talking of quizzes, our next one is on October 8th at 7.30pm and this time it is being held at Hayle Rugby Club, due to the closure of Hayle Bowl. Please do make every effort to come along and support us.

We were lucky with our Raft Race in August, despite a bad forecast, which meant some of the stall-holders that had booked a place

didn't pitch up, the rain held off and a good time was had by all. Reloaded made some great music, and they did it all for free to help the Lights. Do go along to hear them when they are next playing at the Bird in Hand.

We had a sponsored bike ride in September, and many thanks to everyone who gave money to the riders, we haven't got the final total in yet, so I can't tell you the amount we raised. Next year why not join in, if you are shy about collecting sponsorship money you can always make a donation to join the ride.

There won't be another Pump published before the date, so I would like to remind you all that the switch-on this year is on Saturday November 27th at 4.30pm. Come along and hear some lovely carols and our very own Town Band playing. You can have a

David Moyse Clothing

**YOUR
LOCAL
SHOP FOR**



**MEN'S, WOMEN'S &
CHILDREN'S CLOTHING**

You are welcome to come in and browse



Call us now

01736 752053

38 FORE STREET,
COPPERHOUSE
HAYLE

**WINTER IS NOT
FAR AWAY.
CALL AND SEE
US TODAY FOR
YOUR HATS,
GLOVES AND
SCARVES FOR
ALL THE
FAMILY.**

cup of tea and a hot mince pie at the Day Care Centre too.

As usual there will be prizes for the best lit-up house, bungalow & window and if you want to join in let me know nearer the time by handing in your name and address to myself, or Mike Matthews at Matthews & Co. Estate Agents or use the Pump Office.

This year the Winter Illuminated Carnival is on Saturday December 4th, time to start thinking about your entry!

Richard Horwell 01736 752579



RSPB NEWS

A plea to all water sport enthusiasts...I know I've asked this before but please can I ask any of you with speedboats, jet-skis, personal water craft (PWCs), rowing boats and canoes not to enter the main estuary at Lelant Water where all the birds are. This autumn has been our worst on record for the number of incidents of bird disturbance – and for the number of complaints we've received from Lelant residents who are also disturbed by the noise or just by seeing all the birds scared away. We are perfectly happy for other areas of the estuary to be used, hence the regular weekend impoundments at Copperhouse for watersports and the use of the white-water at Carnsew Pool for canoeing...but the birds have got to find sanctuary somewhere!

It is still rather early in the autumn season for most passage species but

"A Peep Through Misty Windows"

By Malcolm J. Swingler

An explanation of, and a guide to some of the ancient sites and monuments of Gwithian.

The revised and extended edition now available from: Connor Downs P.O.

Copperhouse Gallery

Londis Stores, Loggans Estate

Perndarves Arms, Gwithian

The Bucket of Blood, Phillack

Margaret's Stall, Hayle Car Boot
or the author at Calador, 28 Upton

Towans, Hayle TR27 5BJ

at **£3.25** per copy

we have already had over a hundred wigeon and teal and there have been up to 500 dunlin, a few curlew sandpipers and up to 30 common sandpipers on some days. The rarest of all was a North American laughing gull from 23-25th August; which attracted quite a few admirers. Wish I had been one of them but it proved rather elusive! Good birding.

Dave Flumm, RSPB Warden

Tel/Fax: 01736 711682

THE RSPB PRAISE VOLUNTEERS

The work of staff and volunteers at Carnsew Pool over the last couple of months has really made an impression on the amount of rubbish

left littering this beautiful nature reserve. The RSPB would like to thank everybody who has helped so far, collecting over 80 bags of rubbish. Assistant warden Jenny Parker said "It is wonderful how much we can achieve with willing volunteers and I would like to thank them all for their hard work but we still have a long way to go. The RSPB own most of Carnsew pool except for the end by the sluice and with the aid of volunteers we hope to keep on top of the litter problem. Carnsew pool is part of the Hayle Estuary RSPB nature reserve (SSSI), which includes most of Lelant Water, Ryan's Field and a large portion of Copperhouse Creek. With the support of volunteers we can maintain all of these areas in a tidy

state, safe for birds and other wildlife." To volunteer for further information about Hayle Estuary nature reserve and the work of the RSPB please contact Assistant Warden Jen Parker on 01736 711682 or visit our website. For further information please contact:

Jenny Parker on 01736 711682 or 07766 697764

RSPB South West Regional Office, Exeter on 01392 432691.

YORKIE - AN APOLOGY

In the last issue we published a poem by Yorkie, one of our regular contributors. Unfortunately we omitted one line from the poem, so we are publishing it

MURTS TELEVISION

RENTAL

SALES

REPAIRS

**WIDESCREEN RENTALS
AVAILABLE**

*** ROBERTS RADIO AGENT ***

32 - PENPOL TERRACE - HAYLE

01736 - 752269

again, in full, and we would like to offer Yorkie our sincere and humble apologies.

Once Upon A Time

It was a very different life when I left school in 1929
For one thing the seasons never stepped out of line
We could rely on good weather for the summer term
I am quite sure of this as my diaries confirm
School meant desks with inkwells, blackboards and chalk
The scratching of pen-nibs, and the obligatory "no talk"
It was a world of gas-lamps, steam trains, canal barges and trams
We knew nothing at all about long traffic jams
Postmen and porters, in smart uniforms, looked remarkably neat
Old ladies wore black shawls, and mostly clogs on their feet
It was a time when doors were left open with no fear of theft
And family doctors "forgot" to charge patients obviously bereft
So much more I could recollect and compare
But for now I'll just say "I'm glad I was there".

Yorkie



Des Button



**ELECTRICAL
SERVICES &
SUPPLIES**

01736 - 753211



**SPRINGFIELD
33 CLIFTON TERRACE
HAYLE TR27 4BP**



Hayle Dial-A-Ride

We have recently had the fantastic news here at the Bureau that we have secured funding to start a Dial-A-Ride in the Hayle area.

With thanks to our funders (The Countryside Agency, Jobcentreplus, Community Transport Budget, Cornwall County Council and Surestart Portheyl), this new service will soon provide transport to local residents via a telephone booking service using a dedicated vehicle. A 12 seater minibus with full wheelchair access has just been ordered through Cornwall County Council.

The scheme will begin in the New Year and will employ a Part-time Driver and Volunteer Co-ordinator but

JOLLY BODGER WAREHOUSE

**77 FORE ST
HAYLE
01736 752091**



**WE STOCK:
BLACKFRIARS
PAINTS &
PRODUCTS.
FLO GAS
CAMPING GAZ..
HARDWARE,
GIFTS & SOUVENIRS
AND MUCH MUCH MORE!
*HOUSE & CAR KEYS CUT***

will also be looking for volunteers to drive the bus in the afternoons. It will be open to young people, older people, people with disabilities – indeed any residents without access to private transport.

It is hoped that this exciting new project will help lots of people who currently struggle with transport, whether that's getting to a doctor or dentist, shopping or simply for pleasure. The minibus will also be available for hire to community groups or voluntary organisations at evenings and weekends.

If you would like to help out by driving, please contact me at the Hayle Bureau. If you've never driven a minibus before, full training is provided and I'm told the training is fairly easy – I'm even going to attempt it

myself and I'm sure if I can do it, you can too!

Becca Shearing, Hayle Volunteer Bureau, Unit 4, Foundry House, Foundry Square. 01736 757364

THE ROYAL BRITISH LEGION (HAYLE BRANCH)

The month of November is, for the Royal British Legion, one of Remembrance. This year the service will be held at St Elwyn's Church at 9.30am on Sunday November the 14th. Afterwards the assembled gathering of the Town Mayor, Councillors, and the many supportive organisations, will be led by the Hayle Town Band to the War Memorial for a short service of dedication, and the laying of the wreaths. Members of the public are also invited to join us for refreshments at the ACF/ATC Drill Hall afterwards.

The Garden of Remembrance which is situated outside the Passmore Edwards Institute will also be available for anyone should they wish to place a poppy or small wooden cross in the garden. These items will be available from a small container attached to the Remembrance Board from the 8th of November.

The Poppy Appeals organiser is Mr Dave Dobson, his contact number is 078007 089649.

W.G. Lewis, on behalf of The Royal British Legion (Hayle Branch).



Proper Job!

Pictured left to right:
Natasha Trathen,
Katherine Cumbley
and Abi Williams.
They are all pupils
at Hayle Community
School and have
painted the shelter
along King George V
Memorial Walk as
part of their
Citizenship project.

**NEW RANGE OF
ECOMATIC SPECTACLES**

**LIGHT REACTIVE LENSES
RANGE OF STYLISH FRAMES**

**SINGLE VISION FROM £85.00 COMPLETE
VARIFOCALS FROM £99.00 COMPLETE**

F.L. KEAST F.B.D.O.

DISPENSING OPTICIANS

18 COMMERCIAL ROAD HAYLE TEL. 753145

&

21 ALVERTON STREET PENZANCE TEL. 366106

'Fernleigh'



**BED & BREAKFAST
EN SUITE
COLOUR TV
TEA & COFFEE
NON SMOKING
ALL ROOMS**

**26 COMMERCIAL RD
HAYLE
01736 752166**

FLOWER POWER!

No, not a belated sixties revival but my latest passion, **Bush Flower Essences**. Why not the Bach remedies you may ask? After all I've had them in the shop since day zero and been delighted with their effects, even the most determined scoffers have been known to swear by them! And no doubt they will continue to serve their excellent purpose of treating the many conditions Dr Bach envisioned and chose them for. But that was early last century and life has moved on, today we are faced with a whole new set of problems and it is some of these that the Bush Flowers have been selected to address. Added to which Australia represents a vibrant new energy cou-

pled with an ancient wisdom which combine beautifully in these essences which look towards spiritual awakening and a deeper consciousness. The Australian Bush must also be one of the least polluted environments on earth which enhances the purity of the essences.

I am currently undertaking the Bush Flowers Correspondence Course and intend to make up remedies for individual circumstances. The theory is simple, we are all made up of physical and subtle bodies (auras in common parlance), whatever may go wrong in our bodies is reflected in our subtle bodies, and vice versa, therefore heal the subtle body and you heal the physical body. Whether or not you concur with this view doesn't seem to matter, as with all the flower remedies they are equally, if not more, effective on children and animals (less negativity to work through!). They can work alone or alongside any traditional, herbal, homeopathic or complementary treatments, there is no possibility of overdosing or harmful side effects and as I will be making them up they will be very reasonably priced. Certainly worth a go.....who knows where it might lead?

News on the move, or not, is good at the time of writing and lots of positive thoughts please as I hope to have new landlords within the next few months which will enable me to stay at East Quay and moreover add a bright, fresh energy to the place which will benefit us all. This has been an excellent year so the future is looking promising.

At the risk of raising a groan or hav-

All Aerials

TV/FM Aerials & Satellite Specialists

*

Freeview & Sky Digital

*

Channel 5 Reception Problems & Tuning

*

Satellite Systems Installed & Maintained

*

Video/Satellite Playback Systems

*

Multi-point Systems—Domestic & Commercial

*

Members of the Confederation of Aerial Industries

*

Free Local Estimates

All Work Guaranteed * Fully Insured*
Competitive Prices * Prompt Reliable Service

For Free Friendly Advice Call

01736 759225

Mobile: 07979 503907

Email : info@allaerials.co.uk

Visit our web site: www.allaerials.co.uk

SEWING SERVICE

Skirts, Dresses, Trousers, Jeans,
Coats shortened.

Curtains lined or unlined made with
customer's own material up to
60" length.

REASONABLE CHARGES.

Guildford Road area of Hayle.
tel: 01736 753281

ing the Pump chucked into the corner I will quietly mention Christmas because I know that the very organised amongst you are thinking of making puddings and cakes for the festive season and I am happy to order larger quantities than are normally on the shelf of any ingredients you require. I will also be getting in Village Bakery Organic cakes, puddings, stolen and mince pies Gluten Free and Fair Trade plus lots of other tempting goodies so if you are wanting any of these please let me know as soon as possible as from previous experience I know that they disappear almost as soon as they have appeared!

With love and light to all.

Felicity, Hayle Healthfoods

PLEASE SUPPORT
LOCAL TRADERS

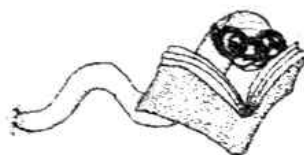
Kidney Cancer UK

KCUK has appointed its first local Ambassadors to liaise with local hospitals and information centres, and will respond to enquiries from patients and carers.

Anyone needing KCUK information and support in these areas should phone:

Lynne Harper 01736 754257 or
Rose Woodward 01209 891307
(Devon/Comwall & Isles of Scilly)

Hayle Library News



We were pleased to host visits from children's authors Michelle Cartlidge and Caroline Binch as part of the sixth Wonderful Words book festival.

Back to school time! Hayle Library is launching a homework club on Friday afternoons. Free membership will include a folder and floppy disc, limited free printing, a priority computer for homework use only and a free



W. J. WINN

FUNERAL & CREMATION DIRECTORS
PRIVATE CHAPELS OF REST
24 HOUR SERVICE



69, FORE STREET
HAYLE
01736 752124

&

TRENWITH TCE
ST. IVES
01736 793029

video/DVD hire. There will be help with using library resources, including the computers, to aid homework. Of course, staff are always happy to give children help with finding information.

We continue to deliver books to customers who find it hard to visit us. A big thank you to the volunteers who deliver and help choose the books. If you or someone you know would like to be included in this service please give us a ring.

All customers are entitled to 30 minutes free use on the computers, with up to 2 hours free use for people on certain benefits. We also offer help on using the computer on a Friday, please book in advance.

And finally, in response to customer requests, we now open from 9am on weekdays (except Thursday when we are closed) and 9.30 on Saturday. More information 01736 753196



NEWS FROM THE SUSTAINABLE TRUST

'Badgers and Bodgers' is our next event on 23rd October, at Crenver Grove near Praze an Beeble.

Anthony Waters of Heartwood Creations is to hold a free green wood-working workshop (funded by BTCV). Andy Norfolk, local group member and ecologist will give some flora and fauna walks and talks. David from Praze will demonstrate bow making with ash. Falmouth Green Centre is to provide a bat and bird box making session. Seamus Moran will show

ALAN ORCHARD & SONS

APPRENTICESHIP SERVED



PROFESSIONAL TRADESMEN

CARPENTRY & JOINERY

uPVC FASCIAS

ROOFING

BUILDING & MAINTENANCE

01736 756687

07787 148571

27 GUILDFORD ROAD
HAYLE TR27 4PP

some of his sculptures inspired by fallen trees in the wood. This will be a free day for all on the first Saturday of half term and we invite anyone with sustainable art skills to get in touch and perhaps give a demonstration. The improved path for wheelchair access and circular schoolroom glade is now installed. We continue to work with volunteers on Saturdays from 10.30am.

Building News

Cornwall Sustainable Building Trust are to build a prototype of architect Bill Dunster's affordable ruralZED inside Holman's redundant factory in Camborne over the next 10 weeks. It is to be the centrepiece of 'The Sky's the Limit' on the 26th November, an exhibition of sustainable buildings and materials.

The build will be part of a train-

ing course for potential ZED builders, who will eventually be able to buy these houses in kit form.

Channel 4 intends to film the process for their 'Grand Designs' programme. Contact for more details.
Pip Richards 01209 831718
sustrust@aol.com

BRIGHT SPARKS!

I would like to say a few words in praise of our much-maligned electricity suppliers SWEB (if that is what they are still calling themselves). In particular I want to draw attention to one of their little heralded public services. Many of us can get

very casual carrying out the normal domestic chores, inducing a complacent mood, and as statistics show, most accidents occur in the home. Never fear! Like Cato leaping on the unsuspecting Inspector Clouseau from behind a door in the Pink Panther films, SWEB are there to keep you on your toes at all times, when you least expect it.

7.30 in the morning, one kid has lost its gym kit and the other won't eat breakfast, and the wheelie bin needs putting out. Whoosh – you are plunged into darkness, and that great legendary British war-time spirit is called upon. 7.30pm – you settle down to watch your favourite soap, a glass of something alcoholic close by.



BIGGLESTONS

TRADING IN HAYLE FOR OVER 100 YEARS

Please try us first for the best of Hardware,
Ironmongery, Kitchenware, Paraffin
and Garden Supplies.

01736 752219

Summer, Autumn, Winter, Spring
We can supply 'most everything

PLEASE SUPPORT LOCAL TRADERS

Whoosh – off goes the telly, leaving you in the Stygian gloom. Sometimes the breaks are only about 15 seconds, a mere training exercise specially designed to keep you alert.

Now a lot of folk would complain about what they perceive to be an inconvenience, but think of the benefits. For example, you get frequent practice in re-setting the various digital clocks around the house, so eventually you have no need to refer to the instruction manual – assuming you can find it, and are fluent in Japanese/Swedish. Ever have one of those senior moments where you can't remember where you put the emergency candles? Relax, SWEB's frequent interruptions mean you know exactly which cupboard in which to look, and no longer get your hand clamped in a mouse trap.

Naturally, providing a service as good as this, it's inevitable that prices have to rise, and some may feel the latest proposed increases to be over the top. In addition to thissorry, must go, the lecky's just gone off again. Now where exactly *were* those candles?

Taurufax

REVITALISE! HAYLE COAST AND COUNTRY

Over the past six months the Pump has reported on the progress made by our steering group, under the guidance of Jeremy Joslin, the Project Co-ordinator. In June of this year I took over the role

Mrs Terry Lello

COUNTY COUNCILLOR



*If you need any assistance
with matters relating to County
District or Town Council
I would be pleased to help
and can be contacted at:-*

Telephone

01736 757057

Mobile

07890 192587

e-mail

tello@cornwall.gov.uk

of Community Agent, which means I have to keep everybody informed of events and keep the Committee under control!

Sadly Jeremy has found that he has been forced to resign due to the increase in his business commitments. The Steering Group are very grateful for his efforts and wish him well in the future.

We have, however, continued to make progress and we held another Launch event, this time in St. Erth. Again we asked the public for their ideas for making the village and the area a better and more pleasant place to live in, and they came up with many good ideas. The results are being analysed and will be added to the Hayle findings.

We will complete our consultations with evenings in Gwinear, Gwithian

The Farm Shop **31 Penpol Terrace** **Hayle**

**Open 6 days a
week 8am - 5pm**

**For all your local
produce, fruit,
vegetables, plants &
flowers, free range
eggs, local honey,
and lots more.**

**Local tomatoes, runner
beans, & strawberries**

and Connor Downs, hopefully in early October.

It may seem a slow process but the end result should be a big boost to the area. Once we have identified the main projects needed and found the necessary community backing we can move into action and assist with the more technical side of things, such as planning, use of consultants for feasibility studies and methods of acquiring finance.

The whole idea is that projects are founded in the community and not ideas imposed by a distant higher authority.

This autumn we hope to be able to tell you of up to three major projects which could become a reality. It does have to be a partnership between us and community groups so if you have any ideas, large or small, that you

think would benefit the area then please let me know.

If you want to contact me I am in the office at Unit 18, Hayle Shopping Arcade on Mondays, Wednesdays and Fridays between 2pm and 4pm.
Roger Winterburn (Community Agent, Revitalise! Hayle Coast and Country) Tel: 01736 755448

GENERAL KNOWLEDGE QUIZ

Our quiz this time is designed to test your general knowledge, and to make it easier we give multiple choice answers. All entries to the Pump office, closing date 20.11.04. The entry with the most correct answers will win a £20 voucher which can be spent with any of our advertisers. In the event of a tie the winner will be picked out of the office hat.

1. What currency would you need in Vietnam?
A Sum
B Won
C Dong
2. Who runs the Kwik-E-Mart in the Simpsons?
A Moe
B Apu
C Barney
3. Who wrote the book that the movie The Godfather was based on?
A Francis Ford Coppola
B Mario Puzo
C Leon Uris
4. What British commander was responsible for the long attrition on the Western Front in WWI?
A John French

- B Douglas Haig
C H.H. Kitchener
5. How many of the Walker Brothers trio were actually related?
A All 3
B 2
C None
6. Which of the Twelve Apostles was replaced by Matthias?
A Judas Iscariot
B Peter
C Simon the Zealot
7. What TV show features the Café Nervosa?
A Friends
B Frasier
C Seinfeld
8. Where will the 2006 football World Cup be staged?
A South Africa
B Germany
C England
9. What name was given to foreigners who fought for the Spanish government in the Civil War?
A The Socialist Brigade
B The International Brigade
C The Volunteer Brigade
10. What group of Greek Islands is Corfu in?
A Ionian Islands
B Cyclades
C Dodecanese

Good luck!

A Feast for All

The West Cornwall Community Network held their Community Banquet for the residents of Hayle

BARTON **print**

for all your printing requirements

- 07799 411525 -

**General Printing
Letterheads
Business Cards
Compliment Slips
NCR Pads & Sets
Flyers & Leaflets**

1 Turnpike Road, Connor Downs
Hayle, TR27 5DT

and surrounding areas during Heylfest in August.

The Banquet, held in the marquee, saw approximately 150 people enjoy music from Hayle Samba and an introduction to the Network team. There was no Turkish Delight but plenty of Cornish Yarg with a sumptuous buffet of local produce provided by Trevaskis Farm, and 21 boxes of fruit and vegetables presented by Healthy Boxes for a free raffle. The boxes contained fruit, a recipe card and vegetables from local farmers. Further information about the Healthy Boxes scheme can be found at www.healthyboxes.co.uk

Prior to the 'unveiling' of the banquet was a short welcome from Gina Aylward, the Networks co-ordinator, thanking Hayle Town Band for their organisation of Heylfest and the spirit

of partnership among the groups in Hayle that ensured the Community Week would go ahead. Beccy Trahair and Sarah Kind from West Cornwall Community Network were available throughout the evening to provide information on the support available to groups in Hayle and its surrounding areas. Displays of funding provided through the Neighbourhood Renewal Community Chest and Community Learning Chest were on show, enabling all a chance to see how funds were making a difference.

Also attending the Banquet were Sandra Rothwell and James Hardy from West Cornwall Together, Matthew Barton, Assistant Chief Executive for Penwith District Council and members of Revitalise! Hayle Coast and Country. Mrs Osborne who attended the banquet said "It was a

good evening and I had the chance to meet people who I hadn't seen for a while. I also picked up some information that was very interesting about what was going on in the area."

For further information on the West Cornwall Community Network contact Sioban Osborne or Jean Berris on 01736 759012 or log onto www.wccn.org.uk

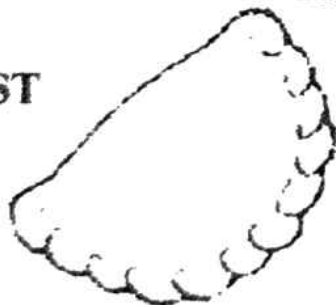
Hayle Meanderers at Prussia Cove

Our meander on Sept. 15th took us along the coast road between Penzance and Helston, the A394. Turning off at Rosudgeon for Prussia Cove, we proceeded to the car park above the cove. Walking down the

PHILP'S

FAMOUS PASTIES

EST



1958

BAKING 7 DAYS A WEEK
FOR THE GREAT TASTE OF
CORNWALL'S
PREMIER PASTY MAKERS
WITH OVER 40 YEARS
EXPERIENCE
VISIT US NOW
AT OUR SHOPS AT-



**1, EAST QUAY,
 HAYLE
 01736 - 755661**



**1, FOUNDRY HILL,
 HAYLE
 01736 - 753302**



**MARKET PLACE,
 MARAZION
 01736 - 710332**



**THE SQUARE,
 PRAZE & BEEBLE
 01209 - 831360**

lane and onto the Coastal path above Bessy's Cove, the cart tracks can be seen cutting across the rocks below, relics of the time in the late eighteenth century when this was the domain of the famous smuggler, John Carter, whose fascination with Frederick the Great, King of Prussia, led to the naming of the area. Going on past the fishermen's cottages where wild sea kale and cabbages were growing along the path, we could see the jagged headland of Cudden Point, with the route crossing stiles and skirting fields above Stackhouse Cove and below Acton Castle. With the wonderful warm and sunny weather, most of the 26 Meanderers were feeling the heat, so we made tracks for Perranuthnoe Beach, where the sparkling sea drew several into the water for a swim. After our picnic lunch we climbed to the café and enjoyed a welcome cuppa, then walked up through the village to turn right onto the footpath through the fields where the blackberries and sloes were thick in the hedgerow. A buzzard floated high overhead with its melancholy mewing call, and between the rocks below two seals were busy looking for fish in the clear water.

We had intended to walk behind Acton Castle on our return, but the narrow and rocky bridle path had several large cattle blocking our progress, and so we turned right and back onto the coastal path, stopping once more at Cudden point to drink in the wonderful panoramic views on this perfect day.

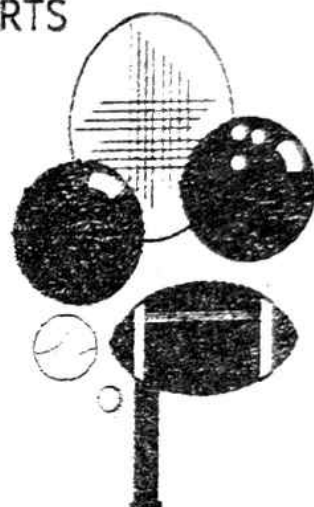
Join us on one of our walks, 10.30am at Commercial Road car

ANGOVE SPORTS

COPPERHOUSE, HAYLE
01736 - 752238

FOR ALL SPORTS
EQUIPMENT
CLOTHING &
FISHING
TACKLE

*
RACKETS
REPAIRED
& RESTRUNG



park next to the Day Care Centre. Bring a packed lunch and wear suitable clothing as some paths are overgrown. For more information: Joan Smith 01736 793631

Hayle Meanderers Oct.-Dec. 2004

- Oct. 6th Perranzabuloe
- Oct. 13th Buryas Bridge – Paul
- Oct. 20th Porthgwarra (Circular)
- Oct. 27th Treslothan – Pendarves Woods
- Nov. 3rd Flushing – Mylor
- Nov. 10th Carn Galver – Bosigran
- Nov. 17th Falmouth – Maenporth
- Nov. 24th Gwinear – Angarrack
- Dec. 1st Kynance Cove – Lizard

This newsletter has been assisted by a grant from the Neighbourhood Renewal Unit.

ROADCRAFT SCHOOL OF MOTORING

Detailed and patient tuition
from

CHRIS MILLER, D.T.p., A.D.I.,
M.I.A.M.

Learner, Pass Plus &
Advanced Tuition

*Free Starter Packs

*Video Loan

*Theory Test Papers

*Pre-Test Checks

*Instruction for Nervous Drivers

*Night Driving Lessons

*Motorway Tuition

0800 0260293

01736 752800 (24hrs)

THE CLUTTON-SMITH CHRONICLES – No. 1. “HAVE YOU WASHED HANDIES?”

As he faced his imminent ninth decade with comparative composure, one small thing stuck out like a sore thumb. Having been remarkably illness-free since his calamitous illnesses of early manhood, he didn't relish the thought of being taken to a British hospital and getting one of the many infections available from these ancient bodies.

He had read reports purporting to blame laxity in general hygiene for some patients coming out in worse

state than going in. Although no specific cause has been established, it is thought that it might be due to an insufficient use of H₂O: not that the scrub-up department is deficient, but rather a deplorable shortage of *personal* hygiene.

Pragmatic to the core, Clutton-Smith felt that this should be a case of “deeds – not words”, and envisaging a possible personal hospitalisation, he started laying his plans. It became apparent immediately, however, that this was most definitely a case of “deeds *and* words”, and he felt that his newfound word processing skills would be called upon. Although he thought that the purist would not call “H₂O” a *word*, he felt that if it was not connected to the fountainhead, it should certainly be connected to the humdrum wash basin.

Regarding himself as a representative of the average potential hospital victim, he sat at his PC and experimented with different forms of card bearing alternative phrases. The first, dragged up from the depths of his subconscious (80 odd years ago) was: “HAVE YOU WASHED HANDIES?” At the approach of any ministering nurse he proposed to leave a card bearing this query carelessly in view, and in what he hoped would not be a confrontational manner. After reading about the shortage of British nurses he realised he would have to ask his PC if it knew Filipino or other exotic far Eastern tongues.

As his mind zoomed into the operating theatre, and he saw the deadly

SPAR



**HAYLE. OPEN
6.30am-10pm,
SEVEN DAYS
A WEEK**

Telephone us on [01736] 753327

FOOD TO GO

NATIONAL LOTTERY



FRESH BAKED BREAD

SPIT ROAST CHICKENS



WE ACCEPT CREDIT CARDS AND GIVE CASHBACK



Family Law Specialists

Divorce & Separation
Financial & Property Disputes
Children
Domestic Violence Injunctions

**For a FREE initial
interview**

Call Antony Vingoe on
01736 752424

Solicitors Family Law Assoc. Accredited Specialist
Law Society Family Panel Member

looking array of scalpels, scissors etc. he thought it inappropriate to take one of his cards with him should he require an operation, in case the surgeon took umbrage.

Submitted on behalf of Clutton-Smith by Alan Neatby-Smith

A HISTORY LESSON – coincidences!

Abraham Lincoln was elected to Congress in 1846.

John F. Kennedy was elected to Congress in 1946.

Abraham Lincoln was elected President in 1860.

John F. Kennedy was elected President in 1960.

Both wives lost a child while living in

the White House.

Both Presidents were shot on a Friday, both Presidents were shot in the head.

Both were assassinated by southerners, both were succeeded by southerners named Johnson.

Lincoln's secretary was called Kennedy, Kennedy's secretary was called Lincoln.

Andrew Johnson, who succeeded Lincoln, was born in 1808. Lyndon Johnson, who succeeded Kennedy, was born in 1908.

John Wilkes Booth, who assassinated Lincoln, was born in 1839.

Lee Harvey Oswald, who assassinated Kennedy, was born in 1939.

Both assassins were known by three names, and both names were composed of 15 letters.

Lincoln was shot in a theatre named Kennedy.

Kennedy was shot in a car called Lincoln.

Booth ran from the theatre and was caught in a warehouse. Oswald ran from a warehouse and was caught in a theatre.

Booth and Oswald were assassinated before their trials.

And here's the kicker!

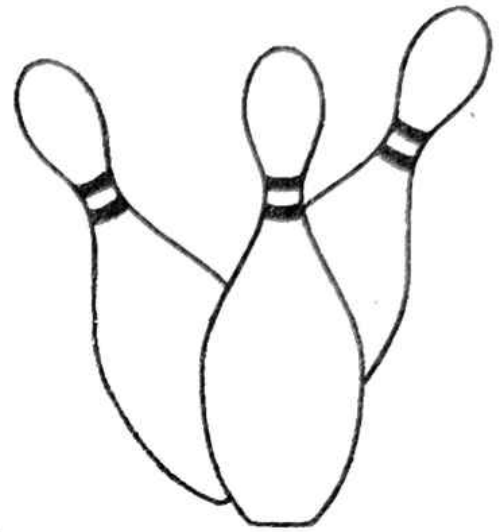
A week before Lincoln was shot he was in Monroe, Maryland.

A week before Kennedy was shot he was with Marilyn Monroe.

Creepy, eh?

Submitted by D.H. Green

Country Skittles



... welcomes Pump readers of all ages.

- ★ 4 traditional 9-pin skittle lanes
- Restaurant and snack menu available at all times
- Roast lunches served all day on Sundays
- Fully licensed bar
- Target shooting gallery
- Crazy golf
- Pool Table football
- Air hockey Batak
- Lots of traditional board games
and many other games to play.

We cater for groups large and small, and provide an ideal venue for family get-togethers, birthday parties and works outings.

To get to us, take the B3302 out of Hayle towards Helston and turn right when you see our sign just past St Erth Praze. We are about half a mile up that road.

Booking in advance is advisable at busy times.

For further information ring us on 01 736 850209



O'DELL SIGNS

OF ALL TYPES
Signwriting, Perspex
Plastic, Engraved,
Magnetic, Posters,
Illuminated signs,
COMPUTER CUT
VINYL LETTERING
for Vehicles & Signs

Embroidery
for
Businesses & Clubs

COLOUR COPYING

HAYLE 01736 753656

1, Turnpike Road, Connor Downs.

Charles Thomas Eustace 1876 – 1957

In the early 1930s Charles Eustace worked as a wages clerk for J & F Pool Ltd of Hayle. After a long illness he returned to work to discover he had been replaced. If it had not been for this illness and loss of employment, Charles Eustace may not, in 1935 at the age of 59, have turned a hobby into a livelihood and become a full-time copper craftsman.

Charles Thomas Eustace was born in Market Street, Hayle on the 19th February 1876. He married Elizabeth in 1900 and they had thirteen children, nine of whom survived into adulthood.

Charles Eustace had no training as a copper worker and was completely self-taught. Through his employment at Pool's he was aware of their 'Cornish Hand-Wrought Copper' prod-

ucts. He was also familiar with the work of the Newlyn art copper Industry. It would have been unlikely for him to have an interest in or begin copper making without this Cornish art copper making tradition. In a 1938 News Chronicle newspaper profile 'Craftsmen of the West' he states, "I have seen the craft die out locally and I am trying, in a small way, to do something to revive it."

From taking up the craft in 1935, Charles Eustace successfully made a significant quantity and variety of hand-beaten copper articles and it became the major contribution to his income after that time. Another craft that supplemented his income was making cane ware baskets and trays. He was, again, self-taught and they sold "like hot cakes." However, in a letter to his daughter Joyce in 1943 he states, "The work is very interesting but not to be compared to copper. There is no scope for the artistic taste."

Continued in next issue.

PRATT'S MARKET; UNITS TO LET

There is one outside biosh available to rent, previously used as a fish stall but suitable for other trades.

Also upstairs indoor unit.

Both at very competitive rent.

See Andrew at BK Video, Pratt's Market 01736 755277.

INDEX OF ADVERTISERS

All Aerials...33	Furniture Warehouse...23	Orchard, Alan...35
Ananda Yoga...3	Hayes, Roy...10	Penpol Garage...17
Angove Sports...41*	Hayle Electronics...20*	Philp's Pasties...40
Barton Print...39	Hayle Holistic Clinic..47*	Rixon...19
Biggleston's...36*	J C Electrical...8	Roadcraft...42
Boyan Ensemble...4	JRH Carpentry...9	Sewing Service...34
Brookvale...14	Jackson, Jennifer...22	Smithy's Hire...48
Button, Des...29	Jolly Bodger...30*	Spar Shop...43*
Colin's M'ket Garden...16*	Keast, H.L...31 *	Spit & Polish...18
Country Skittles...45	Lello, Terry...37	Swingler, Malcolm...27
Cranford Hse B & B...13	Lowe & Macleod...7	Thurstan Hoskin...12 & 44
Dylan's Café...6 *	Mad Hatter...11*	Timeless Video...5
Farm Shop...38*	Moyse, David...26 *	Trevassack Nurseries..15 *
Fernleigh B & B...32	Murt's TV...28*	Wade, Neil...21
Footsteps...19 *	O'Dell Signs...46	Winn, W.J...34

*You can pick up a copy of the Pump at those advertisers marked with a * also at Hayle Library, Day Care Centre, Community Centre, Bodriggy Health Centre, Copperhouse P.O., Forbuoys, St. Erth P.O., Connor Downs P.O., and many other place in Hayle.*



Hayle Holistic Beauty Clinic

FOR INDIVIDUALISED BEAUTY AND
SPECIALISED COSMETIC TREATMENT BY
AWARD WINNING "RAMA"

All beauty treatments by award winning therapist.
Specialised cosmetic treatments.
Collagen, Botox Injections, Thread Vein treatments.
Gift Vouchers . Free Consultation.
Special rates for Senior Citizens & School Children.

01736
755656

SMITHY'S

TOOL HIRE & SALES

HIRE TOOLS FOR TRADE & DIY

UNIT N ST. ERTH INDUSTRIAL ESTATE

(THE OLD CREAMERY, A30 HAYLE - PENZANCE ROUNDABOUT)

**YOUR LOCAL INDEPENDENT TOOL HIRE SHOP
OFFERING YOU THE BEST IN HIRE RATES, BACKED UP
BY A SERVICE - SECOND TO NONE.**

- * Mini-Digger
- * Mixers
- * Compactors
- * Trestles
- * Shredders
- * Power Barrow
- * Breakers
- * Stihl Saws
- * Acrow Props
- * Alloy Towers
- * Roof Ladders
- * Floor Sanders
- * Work Top Jigs
- * Petrol Strimmers /
Hedgetrimmers
- * Rotavators
- * Carpet Cleaners
- * Pressure Washers
- * Steam Wallpaper
Strippers
- * Block Splitters

AND LOTS MORE!

RING US NOW ON

01736 75 72 77