

HAYLE PUMP NEWSLETTER

Circulation 2,500. FREE copy, please take one. Made possible thanks to our advertisers



**Richard and Sally Dungey "Adopt A Plot"
- see page 3**

**Hayle Pump Newsletter,
Unit 14, Pratt's Market, Chapel Terrace, Hayle
TR27 4AB**

email: haylepump@theturks.fsnet.co.uk

*If you wish to advertise in the Pump
please contact Sarah Turk at the
address /phone no. below.*

Editorial Team Members

Tim Appleton

N.A. Bodilly

Goudie Charles (Editor)
01736 757351

Mel Jones
78 Hayle Terrace
Hayle TR27 4BT

Jeff & Sarah Turk
35 Penpol Terrace
Hayle TR27 4BQ
01736 752319

Roger Winterburn (Secretary)
01736 756393

You can leave your news, letters,
notices etc. at our unit in the
market, or with any of the team.
You can also use any of our drop-
off points:

At Foundry
Biggleston's Hardware
Colin's Market Garden

At Copperhouse:
Jolly Bodger
David Moyse Clothing

Advertising Rates

Full page (130 x 190mm)£35.00
Half page (130 x 95mm) £20.00
Quarter page (63 x 95mm)..... £11.00
Eighth page (63 x 42mm)£6.00

The Hayle Pump would like to remind readers that items, or articles and Public Notices are accepted as points of view and are not necessarily the opinion of the Newsletter Team. Correspondents are reminded that all material submitted must be signed with their name and address, and if possible, telephone number for validation. This will not be printed if you don't wish it to be. We reserve the right to refuse or edit items sent to us.

**HAYLE PUMP
SUBSCRIPTION SERVICE.**

For those readers who would like a Pump sent to family or friends elsewhere in the UK, or local people unable to get into Hayle to collect a copy, we operate a postal subscription service. Simply send us the delivery name and address CLEARLY PRINTED, together with £2.30 to cover the cost of stamps and envelopes, and we will send a year's issues (6 copies) of the Pump as soon as it is published. (UK addresses only—please make cheques/postal orders payable to "Hayle Pump Newsletter")

***Closing date for next issue:
20th May 2005***

Hayle in Bloom

The "Adopt A Plot" scheme has got off to a flying start thanks to Richard & Sally Dungey, who are looking after the corner of Merchant Curnow's Quay. If you were familiar with this, you will know what a great job they have done. First of all they dug out all the weeds and tidied up the rocks. The gardeners supplied some lovely plants, and together they have planted up the area. In future the adopters will take care of the plot. There are plenty of other places that would benefit from some T.L.C., so if you too would like to join in, please get in touch with our co-ordinator in Hayle, Mrs A. Foreman, 84 Hayle Terrace, TR27 4BT tel: 754452. Two more people have so far come forward, Mrs J. McKay and Mr P. Humphries, I would like to thank them all for their efforts for the town, and to those people who gave up one Sunday morning last November to plant daffodils. You can see the results of their labours now with the colourful displays around Isis Jubilee Gardens and at Loggans roundabout.

Not forgetting the generous donation of daffodil bulbs from Mr Richards – who incidentally has opened a lovely Farm Shop on Carwin Rise, just past Brewer's Fayre, it's well worth a visit.

The judges from Britain in Bloom in July will be coming in July, last year they commented that they thought the private gardens in Hayle were the best they had seen in the South West, let's hope they think that again.

Hayle in Bloom meetings are held on the last Tuesday of each month at



7.30pm at Hayle Rugby Club, all are welcome.

Cllr Marjorie Roberts, Chairman.

New Look at St Erth Creamery

There is good news for all those who have businesses at the St Erth Creamery site, as the old Warren's café has been re-opened.

The café doesn't only cater for

Cafe 1

st erth industrial
estate

open daily

6.30am – 3pm

full breakfast
& lunch menu
eat in / take away

01736 756123

those who work on the St Erth site, it is open to everyone, with good free car parking close by.

It is run by a local family who have given the premises a cosmetic and menu overhaul, and offers full breakfasts and lunches to eat in or take away.

For more information or to pre-order food call 01736 756123 or www.cafenumberone@aol.com

GOOD TIMES AT THE WATERMILL

On a cold wet Tuesday evening in March, we decided to take advantage of a promotion running in the Times newspaper of 'Eat Out for £5', and clutching our vouchers we went to the Watermill at Lelant

Downs. On entering, you pass the old waterwheel which is still turning, into a very welcoming and cosy bar area with a large wood burning stove.

There was a special £5 menu for the promotion, from which we had to choose. For starters I ordered paté and toast with a mixed leaf salad and my wife ordered the soup of the day. These arrived promptly and were delicious. The soup was a very generous bowlful of spicy tomato, onion and red pepper with a garnish of cream and the paté was nearly a meal in itself.

For the main meals we had locally produced sausages and mash with onion gravy and tomato and courgette lasagna with garlic bread and salad, again we found both meals extremely tasty, and the service by a courteous and charming young man

Hayle RFC

Memorial Park, Marsh Lane, Hayle

tel: 01736 753320

- Now open on Friday nights from 6pm with 10p off a pint during April
- From **Monday 4th April** - Summer Euchre League- snowball running
- Friday 22nd April**- Quiz Night in aid of Hayle Christmas Lights- please support this great cause
- Sat. 23rd April**- St George's Day Disco. Music from the 50s, 60s, 70s.
- Now have great monthly entertainment- look out for our posters!**
- Newly erected darts board- we are looking for players for the winter league.
- Brand new pool table arriving shortly- we are looking for players for teams for both the summer and winter leagues.
- Large Function room ideal for all types of celebrations- Weddings, Birthdays, Dancing...whatever the occasion we can provide a selection of buffet or sit down meals.
- Car Boot- Every **Sunday** morning- Sellers and Buyers all welcome at this popular event.
- For more information please call Sharon on the above number.**

was exemplary throughout.

We were lucky to have had such good food at such a low price, but while we were there we studied the 'specials' board on which were listed such goodies as Trio of Cornish Fish (monkfish, haddock and lemon sole) at £9.95, and other equally tempting dishes.

In the summer there is a beer garden by the stream where it is possible to enjoy your meal, but for now we were happy to be inside by the fire. At another table people were sitting with their drinks and playing a board game, one of several provided by the Watermill, while at the bar there was a jovial group warming themselves by the fire, making for a most enjoyable evening.

Jeff Turk

MORE FOOD...

After such a pleasant dining experience at the Watermill, and purely keep our readers informed (nothing to do with not being in the mood to do any cooking) we decided to check out Sunday Lunch at the Foundry Bar Café. They were serving a three course meal for £10 – and very tasty it was too. Homemade soup, fresh bread, a roast dinner and a truly scrumptious pudding, lovely, and no washing up to do when we got home- just the Sunday papers to read, what more could you ask for on a rainy Sunday in March?

Sarah Turk

Why did the tennis player need new false teeth?

He lost the first set.

Jool's Mobile Haircare Qualified Stylist & Barber

Covering West Penwith

**Telephone Julie
07729 183839
01736 798815**



LAST QUIZ WINNER

Last month's quiz asked what the initials "ING" (the purchasers of Hayle Harbour) stand for.

The answer is "INTERNATIONAL NETHERLAND GROUP".

Congratulations to Mr B. Thomas of Illogan, who sent in the first correct answer pulled out of the Pump hat. He receives the £20 voucher, to be spent with any of our advertisers.

BARTON print

for all your printing requirements
- 07799 411525 -

**General Printing
Letterheads
Business Cards
Compliment Slips
NCR Pads & Sets
Flyers & Leaflets**

1 Turnpike Road, Connor Downs
Hayle, TR27 5DT

New Reiki Healing Clinic in Hayle Area

April Offer 25% off

1/2 hr. Reiki Healing (£10) now £7.50

1 hr. Reiki Healing (£20) now £15

1 1/2 hr. Reiki Healing & consultation
(£30) now £22.50

Contact Helen on 01736 756772

Reiki Healer & Creative Arts Therapist

REIKI HEALING

Reiki is an effective "hands on" healing method originating in Tibetan medicine, aimed at restoring the recipient's vital energy. If this energy is disrupted, illness follows.

Helen, who many people will know as the organiser of the wonderful "Prayer for Asia" which was recently

performed in St. Elwyn's Church, has now opened a Reiki Healing Clinic. The treatment is non-invasive, and most people experience deep feelings of relaxation during a reiki treatment.

For more information contact Helen on 01736 756772.

PRATT'S MARKET : UNIT TO LET.

Outside kiosk, (formerly fish stall) - could be used for ice cream etc., available at a very competitive rent. Other units may be coming up soon; please contact Andrew in BK Video, Pratts Market, Tel: 01736 755277.

BIGGLESTONS

TRADING IN HAYLE FOR OVER 100 YEARS

**Please try us first for the best of Hardware,
Ironmongery, Kitchenware, Paraffin
and Garden Supplies.**

01736 752219

*Summer, Autumn, Winter, Spring
We can supply 'most everything*

PLEASE SUPPORT LOCAL TRADERS



*L to R: Marion Coombe, Allan Thomas, Pam Northover,
Pam Eustace, Ann Hosking*

BRITAIN'S BIGGEST ALL DAY BREAKFAST

This year the Big Breakfast was held on Saturday March 19th at Hayle Methodist Church Hall.

Members of the Church Family set up the "café" the night before, and it looked lovely with the tables decorated with spring flowers. Around 160 breakfasts were served, most people having the full English, although you could opt for a bacon butty or eggs on toast. The food was donated and the chefs, waiters and kitchen staff all gave their services free so a magnificent total of approximately £800 was raised for Cancer Research.

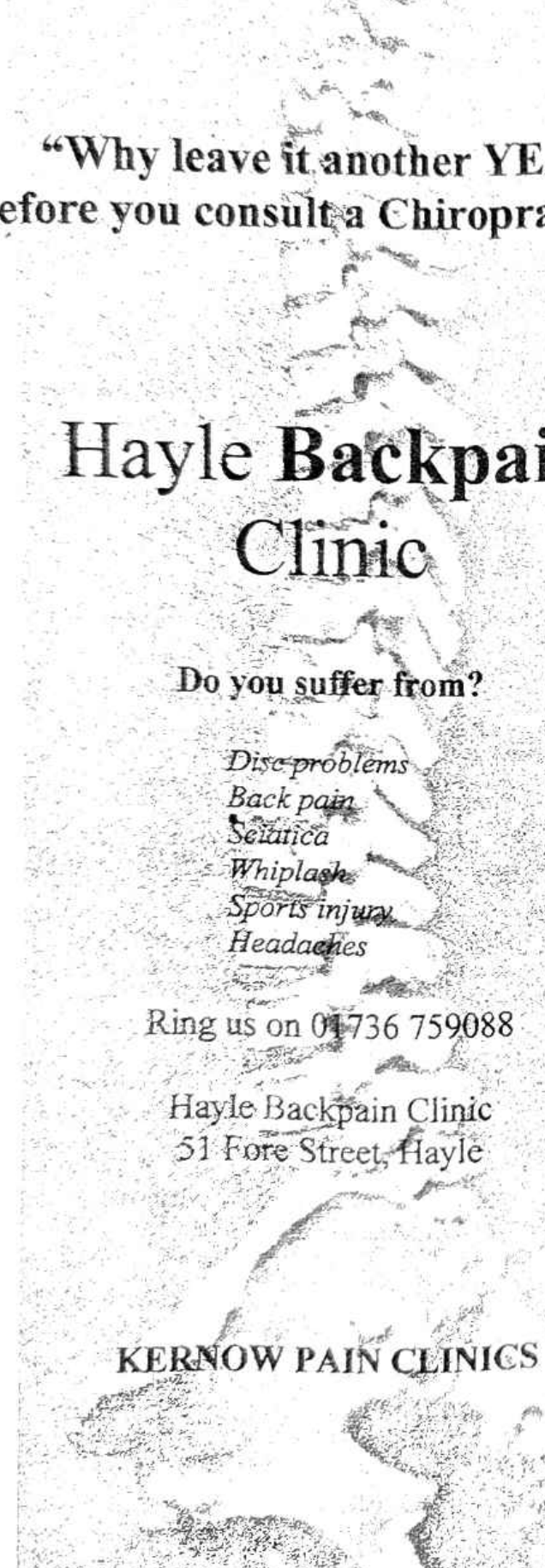
Sarah Turk

**The Farm Shop
31 Penpol Terrace
Hayle**

**Open 6 days a
week 8am - 5pm**

**For all your local
produce, fruit,
vegetables, plants &
flowers, free range
eggs, local honey,
and lots more.**

**Local tomatoes, runner
beans, & strawberries**



**“Why leave it another YEAR
before you consult a Chiropractor?”**

Hayle Backpain Clinic

Do you suffer from?

*Disc problems
Back pain
Sciatica
Whiplash
Sports injury
Headaches*

Ring us on 01736 759088

Hayle Backpain Clinic
51 Fore Street, Hayle

KERNOW PAIN CLINICS

**Do you
suffer
from?**

Disc problems

Back pain

Sciatica

Whiplash

Sports injury

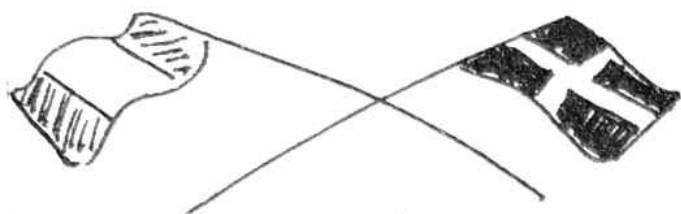
Headaches

Ring us on

**(01736)
759088**

**Hayle
Backpain
Clinic**

**51, Fore
Street
HAYLE**



HAYLE TWINNING ASSOCIATION

On Thursday 14th April we are holding a quiz night at the Smugglers Inn, St Erth Praze, 7.30pm for 8pm start.

The teams will be made up of six people, £2 per person. Think of a name for your team as the team with the best name will win a prize. Ring Alison or Mike to enter, or more details on 01736 753755.

This year 50 of our friends from Pordic are visiting us in May, to arrive on Thursday 5th and depart on Sunday 8th. We are busy at the moment arranging hosts for them, this year it will be a little more difficult to place them, but we will do it, of that you can be sure! Though if any pump readers would like to help out your offer would be most welcome. I know that you would enjoy our twin visits as much as we do, as would your families.

On the Thursday when they arrive they will meet everyone and then go home with their host family. Friday will be free time with the hosts to give everyone a chance to get to know each other better.

On the Friday evening, with the help of Hayle Community School, Bodriggy School and Penpol School, we

are in the midst of arranging a concert of music and dance. This will take place between 6pm and 8pm, and will enable the pupils to sample some Breton dancing because there is a group of dancers in the party, they are called 'The Mod Kozh Dancers' and they have been to Hayle before.

On the Saturday more free time will enable everyone to show their guests around. In the evening (6.45pm for

Wanted

Council Exchange
2 Bedroom Bungalow midway
Southampton/ Portsmouth for
Housing Association 1 or 2
Bedrooms at Hayle
Tel: 01489 895102

Hair

S.V.G
Beauty

**5A FOUNDRY SQUARE
HAYLE TR27 4AE**

*Real Hair Extensions
Great Lengths*

TEL: 01736 754048

E.mail svgsalon@aol.com

7pm) we all meet at the Queens Hotel for a meal, after which there will be more Breton dancing, this time without the traditional dress. On Sunday morning we all meet up to say good-bye until September, when we visit Pordic.

Maurice Trathen 01736 753341

Cornish Aid for Sri Lanka

The children who survived the tsunami near Hikkaduwa in Sri Lanka are grateful to the people of Cornwall for medicines delivered by hand to the medical centre at Peraliya (www.peraliya.com), a devastated area adjacent to the train crash. The antibiotic linctus was particularly appreciated, as many of the smaller children had chest infections.

Bruce, a voluntary worker, told us of one 8yr old girl who comes to the centre every day to look for her twin sister and parents. The construction gangs were still finding human remains 2 months after the tsunami.

Joe Fenn and I visited this small medical centre, overlooked by the larger aid agencies. We had to leave the area on December 26th, but returned 5 weeks later to our hotel, now temporarily repaired to also house aid workers from all over the world. There has always been a close link between this part of SW Sri Lanka and Cornwall because of the excellent surfing. We wanted to return to show the people that tourists had not entirely forsaken them. Local people and volunteers have done a wonderful job re-opening the town for business

DYLAN'S CAFÉ

6-7 Foundry Square, Hayle, Cornwall

Tel. 754809



**All Day Breakfast
Fresh Cooked Lunches
Cream Teas
Vegetarian Menu
Children's Menu**

Proprietors Alan & Rosemary Cummings

after such a short time and we promised to spread the word upon our return – “Sri Lanka needs visitors.”

Such a large area has been devastated, and aid has been sporadic. People have cleared the slabs where their houses once stood, cleaned all the building materials they could find, and pitched a tent. Tents are good for initial aid but can't provide security, are baking hot and are no defence against disease-carrying mosquitoes. We met teams from Denmark and Germany cleaning out 15 wells a day, and builders from New Zealand sponsored by their local council to come and help these stricken people rebuild their houses and their lives. Voluntary aid workers helped measure the children's feet for new shoes and gave art therapy. A theatre group arrived to give them some fun. Canadians working in Korea brought and distributed cuddly toys. The children are still terrified of the sea, the beaches were previously always full of happy kids at sunset playing in the waves, and the emptiness now is poignant.

We heard some bad stories too - the government have all bought new cars, a container of building materials for an orphanage was stranded at customs with 40% import duty to pay, the £25 cheques awarded to each family to help them through bounced.

We intend to return to the area next December with any aid we can manage. Our Trust aims to encourage sustainable development so our ambition is to help provide brick making machines, boat mending facilities and

Fernleigh'



**BED & BREAKFAST
EN SUITE
COLOUR TV
TEA & COFFEE
NON SMOKING
ALL ROOMS**

**26 COMMERCIAL RD
HAYLE
01736 752166**

encourage employment not solely dependant upon tourism. It will take years to rebuild the country and the best way is to give aid directly where it is needed, and where there is no chance of it being diluted by highly paid employees.

Pip Richards www.sustrust.co.uk

BE CREATIVE – RE-USE YOUR WASTE

Cornwall Scrapstore provides useful art, craft and creative materials, donated by industry to community arts, recreational and educational groups and individuals at no cost other than a low annual subscription. There are three scrapstores in

Des Button

**ELECTRICAL
SERVICES &
SUPPLIES**

01736 - 753211

SPRINGFIELD
33 CLIFTON TERRACE
HAYLE TR27 4BP

Hayle Decorative Lighting News

I hope you are all gearing up for the Fancy Dress Raft Race on Sunday August 21st. If you are not entering a raft (and you are all welcome to have a go) there are spaces available for stalls with a reduced rate for charities, please either phone me on 752597 or call in at Matthews & Co. Estate Agents in Copperhouse.

This is always a great day out for the family so please put it in your diary.

Our last quiz in February raised almost £200, the next one is on April 22nd at Hayle Rugby Club, 7.30 for 8.00pm, why not get a team together, come along and have some fun?

Richard Horwell 752597

Cornwall at Liskeard, Camborne and St Austell.

For more info. Telephone 01726 821161.

BADGERS & BODGERS

All friends, volunteers and nature lovers are invited to the next 'Badgers and Bodgers' event at Crenver Grove, between Praze and Nancegollan (sw 637 339) on 23rd April from 10.30am.

There will be free art and sculpture workshops (some under cover), demonstrations of green woodworking, bodging and ecological walks and talks.

Pip Richards

01209 831718 or 07789 600 941.

www.sustrust.co.uk



COULD I HAVE A LOOK
AT YOUR ROB THE RICH
GIVE TO THE POOR
ACCOUNT?

QUIZ: FIND THE BIRDS!

Each of the following sentences contains the hidden name of a bird (or birds). To give you the idea, the answer to question 1 is 'robin'. (The carob in Cyprus....) Only 11 more to find!

1. The carob in Cyprus is grown for both crop and shade.
2. In West Arlington Cemetery there is an aged yew.
3. Elms and oaks alternate along the road. (2 birds)
4. The sea gleams through the Mediterranean pines.
5. He sat in the tree eating Garibaldi biscuits.
6. The notepaper was A4 sized and unlined.

7. The marlin netted off Godrevy is from warmer climes.
8. Loutish, awkward and rude he gave us the bird.
9. The mafia dish out justice through murder or a vendetta.
10. Now look, I wish I could find all the hidden birds. (2 birds)

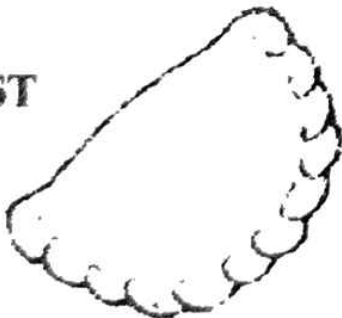
All entries to the Pump office – our address can be found on the top of page 2. The closing date is 20th May and the first all-correct answer out of the hat on that date will be the winner, the prize being a £20 voucher to be spent with any of our advertisers. Happy hunting!

Submitted by Cleverclogs

PHILP'S

FAMOUS PASTIES

EST



1958

BAKING 7 DAYS A WEEK
FOR THE GREAT TASTE OF
CORNWALL'S
PREMIER PASTY MAKERS
WITH OVER 40 YEARS
EXPERIENCE
VISIT US NOW
AT OUR SHOPS AT-



**1, EAST QUAY,
 HAYLE**

01736 - 755661

**1, FOUNDRY HILL,
 HAYLE**

01736 - 753302

**MARKET PLACE,
 MARAZION**

01736 - 710332

**THE SQUARE,
 PRAZE & BEEBLE**

01209 - 831360



ALL AERIALS

TV / FM AERIALS & SATELLITE SPECIALISTS

Members of the Confederation of Aerial
Industries

**ALL ASPECTS OF TV / FM AERIAL AND SATELLITE
WORK UNDERTAKEN**

*

FREEVIEW DIGITAL AERIAL UPGRADES

*

CHANNEL 5 RECEPTION PROBLEMS

*

SKY DIGITAL & EUROPEAN SATELLITE SYSTEMS

*

TV's VIDEOS DVDS & SATELLITE SETUP SERVICE

*

FREE LOCAL ESTIMATES

**ALL WORK GUARANTEED * FULLY INSURED *
COMPETITIVE PRICES * PROMPT RELIABLE SERVICE**

FOR FREE FRIENDLY ADVICE CALL JONATHAN

01736 759225

Mobile 07979503907 / Email jon@allaerials.co.uk

www.allaerials.co.uk



KIND OF CORNISH



The sound of the harp is much-loved by many, given the restful, evocative nature of the instrument.

The Cornish harpist Esme Francis truly has the county in her blood, coming as she does from a long line of 17th and 18th century boat builders. "Kelttek", her new album of solo harp music, aims to depict the moors, islands and shores, washed by the Celtic sea, all that is the spirit of Cornwall. Music of course means different things to different people, and I do not personally "see" such images when listening to this CD. Be that as it may, the music is certainly very restful, with some delightful melodies, all written by Esme. Those who love the sound of the harp will doubtless find this music most entrancing. (57 mins, £8.50)

I make no apologies for the fact that my second review CD is by a Scotsman – and in any case as you will see the music has strong Celtic connections! The world class jazz guitarist Jim Mullen has for many years been making regular appearances in West Cornwall, and always plays to full houses. The CD "Burns" takes as its inspiration the songs of Robert Burns, in an attempt to portray them from a jazz perspective. This apparently risky undertaking is in fact extremely effective, and such well-known songs as "Banks and Braes" and "Red, Red Rose" take on a new perspective in Jim's hands. He uses

MDG PLUMBING

**For a quick friendly
quote.**

**Plumbing repairs large or
small.**

**Drains, Bathrooms, Taps,
Heating, Kitchens, Toilets
and all general plumbing
needs.**

**Call Mike on:
0789 138 9474**

a technique originally pioneered by the great Wes Montgomery, which involves plucking the strings with the thumb rather than a plectrum, and this gives him a lovely warm sound which suits this material perfectly. The accompanying quartet is unobtrusively "on the case", and I can thoroughly recommend this CD, and not only to jazz aficionados. (63 mins, £10). Incidentally, Jim's next local appearance will be on May 24th at the St Ives Jazz Club, Western Hotel. Doors open at 8.30pm – be early! **Both CDs, and many other items by Cornish artists, as well as a large selection of jazz, classical music and nostalgia, can be obtained from:-**

**West Penwith Music
Union Street
Penzance (Tel. 01736 364440)**

KRIS GAYLE ST IVES GIG

Following her sold out, rapturously received gig at the St Ives jazz club in March, Hayle jazz diva Kris Gayle returns to the town on Sunday May 15th. This time she will be appearing at lunchtime at the St Ives Lifeboat Inn with her duo, the other musician being Hayle's virtuoso jazz pianist Viv Rodd, and admission will be free. On the gig Kris and Viv will be selling their recently issued CD "Dedicated to You", which has just received an excellent review in the UK's leading jazz magazine "Jazz-wise".

Why do bees hum?

They've forgotten the words.

THE VIEW FROM THE STEEPLE

Oh, my goodness, what a hectic few weeks it has been! We don't seem to have stopped to draw breath. As soon as one event was over we started to prepare for the next, especially from the end of January until the middle of February.

We started with the West Cornwall Concert Band's Tsunami Appeal on 20th January. They were joined by Breage Band, the Pentire Singers, Bucca Male Voice Quartet and the soprano Susan King for a very enjoyable evening. This talented band and their friends put on several performances to raise money for the Rotary Shelter Box Trust.

Tel 01736

752119

TREVASSACK Mob

NURSERIES 0773 073 3263

GARDEN CENTRE

HIGHLANES HAYLE.

OPEN 10.30/1.00pm-2.00/5.00pm

LARGE SELECTION OF PLANTS FOR BEDDING, TUBS AND HANGING BASKETS, INCLUDING FUCHSIAS, SURFINAS, OSTEO, PELARGONIUM ETC. SPECIAL OFFERS ON GLAZED POTS & CONTAINERS, SEED TRAYS, PLASTIC TUBS & BASKETS, WIRE BASKETS, COMPOST, GROW BAGS. READY PLANTED BASKETS & TUBS. BAMBOO WINDBREAKS, STONE ORNAMENTS ETC. VARIOUS SHRUBS IN CONTAINERS. WOODEN TROUGH, LOG EDGING ROLLS.

Top of Highlanes near the football club

Two evenings later, St Elwyn's played host to the 6th Annual Celebration Concert of the Cornwall Chamber Orchestra, with their special guest soloist Kay Deeming. Crowned by a masterly performance of Mozart's Symphony in G minor, this was a true feast of classical music in aid of St Julia's Hospice.

On 29th January the Lady Chapel at St Elwyn's was transformed by candles and fairy lights into an Asian Prayer Shine by a group of musicians and singers from all over Penwith for a truly magical and spiritual experience which they called "A Musical Prayer for Asia". The evening opened with an evocative Aborigine call to prayer played by Andy Tanner on the didgeridoo and ended with most of the audience dancing in the aisles to the beat of Hayle Samba. This sparrow has never seen anything quite like it but it should happen more often. I even managed to force down a few crumbs from the refreshments which were also provided by friends of the group, and their fantastic effort raised over £1,000 for Rotary, who were also there with an example of their "Shelter Boxes".

On the 30th January the 7th Winter Concert Season got under way with a welcome first visit by St Columba Celtic Male Voice Choir and the Richmond Singers; they were well received by our ever enthusiastic concert audience, and we look forward to them paying us another visit soon.

Two special church services fall in February. St Elwyn's Feast Day is on

NEIL WADE
MOTOR ENGINEER
 CENTRAL GARAGE
 10A HAYLE TERRACE
 HAYLE

M.O.T. TESTING STATION
DIESELS & CATALYSTS
TESTED*
SERVICING*REPAIRS*
WHEEL BALANCING*
EXHAUSTS*TRACKING*
TYRES*BATTERIES

HOME: 01209 610651
MOBILE: 07990 981546
WORK: 01736 756512



22nd February, but one of my favourites is the Feast of Candelmas because it not only brings us the beautiful sound of the Penwith Deanery Choir, but it also marks the end of Epiphany and the winter festivals. The Celts called it Imbolic or the Coming of New Light and if you lived on the Shetland Isles you would celebrate "Uph Helyar" and burn a Viking long

FOOTSTEPS

27 Penpol Terrace, Hayle
01736 757735



*Spring into Summer with
 our beautiful colourful
 well-fitting shoes*

ship to welcome the lengthening days.

The first of St Elwyn's art exhibitions opened on 14th February.

Entitled "Winter Quartet" it featured works by four local artists, David Dyer, Bob Devereux, Phil Travers and Ray Denton. The following evening the Carlyon Singers visited us with "Secrets of Holy Russia", a combined pre-performance talk on the Orthodox choral tradition and a stunning performance of Russian church music.

Mousehole Male Voice Choir performed our second winter concert. Mousehole, with their special guest Angela Thomas, have been great supporters of Concert season and are always great audience favourites. Our next visiting choir is St Stythians,

with our old friend John Hitchens.

Finally, our second art exhibition opened on 28th February featuring the work of Barbara Carn entitled "From Darkness into Light", a series of studies made in Salisbury Cathedral.

Well folks, after that marathon I am off for forty winks in my belfry before Easter week starts.

See you all again soon!

The Sanctuary Sparrow

For bodily exercise profiteth little: but godliness is profitable unto all things, having promise of the life that now is, and of that which is to come.

1 Timothy 4 v 8

JENNIFER JACKSON

**QUALIFIED LEGAL
ADVISOR**

**SENSIBLY PRICED LEGAL ADVICE AND HELP
IN PLAIN ENGLISH**

**HOME VISITS DURING OFFICE HOURS AND AT
WEEKENDS**

**FRIENDLY AND CONFIDENTIAL
SERVICE COVERING A WIDE
RANGE OF LEGAL AND LAW
RELATED TOPICS**

**01736 751718
0778 682 1116**

**32 RIVERSIDE,
ANGARRACK
HAYLE TR27 5JD**



RSPB NEWS

Encouragement for terns....the Common Tern actually isn't as common as its name suggests. We have a colony of about 100 pairs in the Isles of Scilly but otherwise if you travel northwards up the coast you will need to reach Anglesey in North Wales to find the next. These birds are summer visitors to our shores arriving here mid April to feed on sprat and sand eels and can often be seen in the estuary at Hayle or more especially St Ives Bay as they continue their northward migration. This year, thanks to the pupils of St Erth Primary School and their teacher John Hipkiss, we are hoping to put a stop to that! The schoolchildren have painted about twenty decoys and placed them on the islands at Ryan's Field (where they regularly stop over to roost) in an attempt to keep the birds here. It is hoped this extra stimulus will encourage the birds to set up home and breed. Whether this idea works or not remains to be seen but conservation projects like this are always worthwhile in terms of environmental education alone. At least the children know a lot more about the hazards of migration, how birds feed, what suitable habitats they need to nest in etc. than they did six months ago. For example, if our beaches were not so crowded with people the terns would breed here – the children might be having a word with you about this in the summer. Good birding!

Dave Flumm, 01736 711682

IAN GRATTON

**CENTRAL GARAGE
6-10 HAYLE TERRACE**

**QUALITY USED
CARS**

**Come and See our
Comprehensive Selection**

01736 755885

*** SHOP * PETROL *
* FORECOURT *
* COAL * GAS * LOGS ***

HAYLE PRE-SCHOOL PLAYGROUP

Hello parents, carers and children. At last we are delighted to tell you we are back in our own premises in Bodriggy Street, with lots of new toys and equipment, and of course, our lovely safe garden. We have vacancies for 2-5 year olds, so why not call in and see us?

We are open from 9am till 12noon daily, and our staff are friendly and highly trained. Our premises will also be available to hire for parties etc. out of playgroup hours.

Enquiries to either Shirley or Sue on 01736 755346.



Brookvale

Residential Care Home for the Elderly

Family run home, by the resident proprietors Mr & Mrs Broadbridge & Mrs Pleasants RGN, which prides itself on a personal and caring environment. Situated in the centre of Hayle close to all amenities.

Private and DSS residents welcome whether short or long stay. Fully registered with the CCC, and a member of the Cornwall Care Homes Association.

- all necessary care & assistance supplied
- large garden and patios
- two lounges & spacious bedrooms
- full 24 hour care & central heating
- weekly hairdresser & chiropodist
- domiciliary services, day care & M on W

6 Commercial Road
Hayle, Cornwall TR27 4DG

Telephone: 01736 753608

Letters....



Letter

I recently saw your 10th anniversary edition and wanted to congratulate you all. I first wrote for the Hayle Pump as the "Youth Correspondent" in its early days following a meeting of us teenagers at the Penmare. At the time, councillors and town leaders were interested to hear what we wanted in the town. I seem to remember a skate park, swimming pool with a roof and more discos at the Penmare were top of the agenda. As the voice of the young people in the Pump I tried to convey that at 14 we wanted to have our say. I was

sad to see the Penmare days end – it was a good meeting point for everyone to come together, especially for those of us who would always know where to find people when we came back to visit Hayle.

On a personal note the Pump was a great starting point for me. With my cuttings in hand I have moved through the college then university papers, and now at 25 I am news editor of the Slough and Windsor Observer where I started as a junior reporter three years ago.

Well done again to everyone at the Pump for all your hard work. And thanks to my Nan for sending up the Pump whenever she can. All the best for the next 10 years.

Rebecca Johnson, Iver, Bucks

Letter

I wondered if you might print this request for help? Many years ago in a past life, or so it sometimes seems, the early 70s to be exact, my husband and I had a good friend called Cliff Walker. We were living in Swindon, Wiltshire, Cliff having since moved to Hayle with his mother. Six years ago we moved to Port Isaac, but got to know Hayle well when my husband Colin Durston was making good use of your St Michael's Hospital. We would both love to get back in touch with Cliff, I know this would be particularly welcome for my husband Colin. They were good football pals, and if we could arrange for them to get together again it would be lovely.

Maxine and Colin Durston, 12 The Terrace, Port Isaac, Cornwall PL29 3SG. Tel. 01208 880629.



HAYLE OPEN AIR SWIMMING POOL

A number of events have been planned to mark the official opening of Hayle Open Air Swimming Pool on Saturday 28th May 2005.

The programme has not been finalised yet, but be assured it will be great fun and create quite a splash!

Hayle Town Council has managed to secure additional support and funding from Penwith District Council to extend the opening season by a total of three weeks, to improve the overall appearance and running of the facility. Many thanks to the Town and District Councillors and Officers

concerned.

The pool is opening approximately two weeks earlier in the season this year, which means that it will be open for the Whitsuntide Bank Holiday weekend and the half term holiday that follows.

A loyalty card will be introduced for those who swim on a regular basis. This will mean that if you swim four times you get your fifth swim free. When you purchase your first admission ticket just ask the Lifeguard to issue you with a Loyalty Card which will be marked each time you pay to enter the pool. And the even better news is that the admission charges remain the same as last year.

The entire facility will be gleaming, having undergone a major overhaul. A huge THANK YOU must go to the Hayle branch of Jewsons, who have

David Moyse Clothing

Your
local
shop for



men's, women's & children's clothing



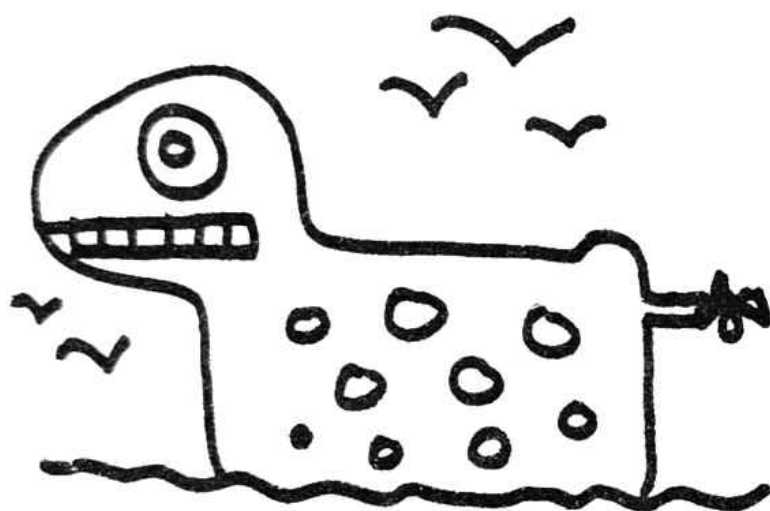
Call us now

01736 752053

38 FORE STREET,
COPPERHOUSE
HAYLE

**Spring
and
Summer
Clothing
for all
the
family
now in
Stock.**

kindly donated materials and resources to allow this to happen. Without this support and generous contribution the pool would not look half as good. The revamp is currently underway, and thanks also to all the successful contractors who are working at the pool site in readiness for the forthcoming season.



Opening times and special events will be advertised shortly, but if you have any queries regarding the pool, please contact the Town Clerk at Hayle Town Council, Passmore Edwards Institute, Commercial Road, Hayle, TR27 4DE.

Telephone 01736 755005 or Email: townclerk@hayletowncouncil.net

Come and visit this much loved and valuable facility during what we hope will be a scorching hot, fantastic 2005 summer season.

Get your swimming kits ready!
E. Giggal, Hayle Town Clerk

Plants on the Towans **No. 7 Mugwort**

There's such a nice contrast between the common English name and the Latin:- *Artemisia* Vulgaris*.

PENPOL GARAGE **IN TUNE WITH TECHNOLOGY**

**ALL MAKES OF VEHICLES
REPAIRED & SERVICED.
WE ARE NOW ABLE TO OFFER
CRYPTON PROSCAN
DIAGNOSTICS**

THIS IDENTIFIES ENGINE MANAGEMENT
FAULT CODES, ABS & AIR BAG FAULTS
SERVICE LIGHT RESET. ETC.

**FREE-FIT TYRES & EXHAUSTS
CAR AUDIO INSTALLATIONS
MOT PREP. & REPAIRS**

**PERSONAL ATTENTION &
PROFESSIONAL SERVICE**

TEL: 01736 757011

MOB: 07971 842908 (ANYTIME)

It grows here and there around the edges of the Towans, at this end around the fields behind Clifton Terrace and at Mexico. The plant dies down in the autumn and grows again from the same root the following spring.

Used by women since ancient times to provoke delayed or absent periods and stop pain – it also activates the digestive process and stimulates the liver. In our folklore this is an herb of Venus and in early times had a reputation as a witch's herb and was used in sorcery and occultism.

The Chinese written word for 'acupuncture' consists of two characters: the first depicts a needle piercing the skin and the second represents the fluffy dried leaves of *Artemisia*

(moxa). Mugwort is indispensable to the acupuncturist because its energy is virtually identical to the energy of the human body and small cones of the dried herb are burned at certain points on the body to stimulate the patient's vitality.

Mugwort is highly regarded wherever it is found – if you like vivid dreams put a sprig of mugwort under your pillow!

In plant spirit medicine Mugwort also occupies a prominent position, it is the most important of the remedies used in the transfers of energy within the meridian system (the same system used by acupuncture). Sometimes energy can be blocked as it moves from one meridian to the next or one side of the body can have much more energy than the other. Both problems can be detected

through the Chinese pulses and remedied by the Mugwort spirit.

On a more material level Mugwort is an aromatic culinary herb and can be used as a substitute for tea, it can be collected at any time while in bloom.

* Artemis – a primitive earth goddess, a virgin huntress and patroness of chastity.

Michael Locke, Plant spirit medicine practitioner.

ONLY WHEN THE LAST TREE IS CUT, ONLY
WHEN THE LAST RIVER IS POLLUTED, ONLY
WHEN THE LAST FISH IS CAUGHT, WILL THEY
REALISE THAT YOU CAN'T EAT MONEY.

Native American Proverb

Free Range for Kids

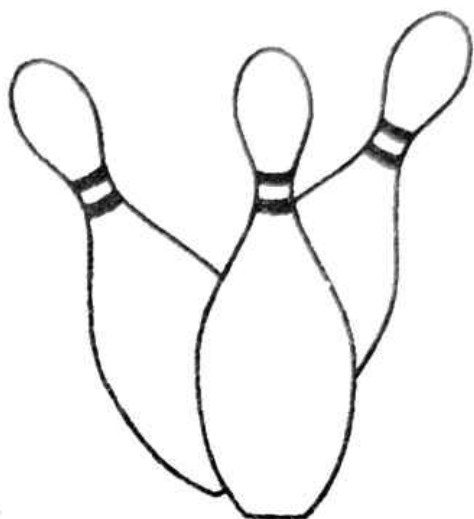
Large range of children's frames - Many FREE with
N.H.S. voucher following N.H.S. sight test

F.L. KEAST F.B.D.O. OPTICIANS

21 ALVERTON STREET
PENZANCE TR18 2QP
tel: 01736 366106

18 COMMERCIAL ROAD
HAYLE TR27 TR27 4DG
tel: 01736 753145

Country Skittles ...



... welcomes Pump readers of all ages.

4 traditional 9-pin skittle lanes

Restaurant and snack menu available at all times

Roast lunches served all day on Sundays

Fully licensed bar

Target shooting gallery

Crazy golf

Pool Table football

Air hockey Batak

Lots of traditional board games
and many other games to play.

We cater for groups large and small, and
provide an ideal venue for family get-togethers,
birthday parties and works outings.

To get to us, take the B3302 out of Hayle towards Helston and turn right when
you see our sign just past St Erth Praze. We are about half a mile up that road.

Booking in advance is advisable at busy times.

For further information ring us on 01 736 850209

MARRIED COUPLE

Jill: How you sittin' in the dark?

Jack: We got a power cut.

Jill: Don't be daft, the bus is just gone past all lit up.

Jack: Then the bulb must be gone, you'd better put one in. I'm goin' out for a pint.

Jill: Don't you get lit up, you're daft enough when sober.

Jack: I got to go, I'm in the dart team.

Jill: Hope you do better than you did in the pub quiz.

Jack: What you mean? I got the first three questions right.

Jill: So did everyone else. They were your name, address and telephone number.

Jack: You don't understand, they questions were some hard.

Jill: Hard you say, you didn't know where Falmouth is.

Jack: I told them before we started that I didn't know anything about foreign parts.

Jill: Dear dear, when they asked who built the Pyramids, you said Macsalvors.

Jack: Well I'm not a mason, so how could I know that?

Jill: I'm glad you didn't take me. Come to think about it, when was the last time you took me out?

Jack: I took you down the allotment last week.

Jill: That was for me to carry the tatties home.

Jack: Be fair, I had to carry the trowel home to clean it.

Jill: You didn't clean it, you put it in the dishes for me to clean.

MURTS TELEVISION 32 PENPOL TERRACE

01736
REPAIRS

SALES

752269
RENTALS

**BARGAIN-SECOND HAND 20/21"
TELEVISION FROM £50.00**

**AGENTS FOR ROBERTS RADIO
RADIO/CD PLAYERS - CLOCK RADIO
BEFORE YOU BUY GIVE US A TRY**

Jack: Here, don't forget, I mended your broom yesterday.

Jill: Huh, did you really think blu tack and four drawing pins would keep the handle on?

Jack: Oh I'm goin', nag nag nag.

Jill: That's right, go down the pub and do what you're best at.

Jack: What's that?

Jill: Bending your elbow.

Jack: Trust a woman to have the last word!

Dorothy Cook

STRAWBERRY BLONDES - THE BEAUTY ROOM

Just what Hayle needs – its very own beauty room. Offering the full range of services including facials, manicures, pedicures, non-surgical face lifts, waxing, spray tanning, nail extensions and lots more.

So come in, lie back and let yourself be completely pampered! Open Monday to Saturday, Tel. 01736 756994.

Proprietor - Sue Crew

Beauty Therapist – Steph Wright

Sewing Service Closes

It is with regret that, due to health problems, I have to retire from doing the sewing alterations.

Thank you to all my customers whom I shall miss seeing. Many of you have become friends, and I'm sorry to say good-bye.

Jean the Sewing Lady

ALAN ORCHARD & SONS

APPRENTICESHIP SERVED



PROFESSIONAL TRADESMEN

CARPENTRY & JOINERY

uPVC FASCIAS

ROOFING

BUILDING & MAINTENANCE

01736 756687

07787 148571

27 GUILDFORD ROAD

HAYLE TR27 4PP



IDIOTN'T KNOW HE
DRANK 'TILL HE
CAME HOME
SOBER ONE DAY

CANON'S TOWN

*Oh Canon, long departed hence
From your own Canon's Villa
What would you think of Heather
Lane
Which couldn't get much fuller?*

*If you look down without a frown
You'll see the road completed
After years of wretched ruts
That pleasant walk defeated.*

*It's lost its ancient charms for those
Who don't mind country muddle.
The new influx of wealthy folk
Would hardly know a puddle.*

*The rest of dear old Canon's Town –
From Lamb & Flag to Smithy –
Is fast becoming urban sprawl
And leaves me in a dithy.*

Alan Neatby-Smith

BALANCE

With the arrival of the equinox we look forward to spring energy, not to mention the weather (!?) and we should be poised to cast our winter sloth, but if, as frequently happens in a modern lifestyle, we have been driving our bodies and minds just as hard through the winter months as we do during the summer, the thought of increased demands on our resources will probably bring a helpless sigh rather than a burst of enthusiasm. Recalling our cave dwelling ancestors who most likely spent the long days of summer amassing stocks of food and clothing and the cold short days



O'DELL SIGNS

OF ALL TYPES
Signwriting, Perspex
Plastic, Engraved,
Magnetic, Posters,
Illuminated signs,
COMPUTER CUT
VINYL LETTERING
for Vehicles & Signs

Embroidery
for
Businesses & Clubs

HAYLE 01736 753656

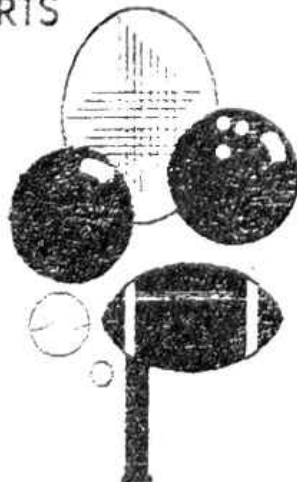
1, Turnpike Road, Connor Downs.

ANGOVE SPORTS

COPPERHOUSE, HAYLE
01736 - 752238

FOR ALL SPORTS
EQUIPMENT
CLOTHING &
FISHING
TACKLE

*
RACKETS
REPAIRED
& RESTRUNG



of winter resting, emerging only for absolute necessities, it is easy to see how far we have strayed. The revolution in facilities has come far too fast for evolution so the constant fatigue which is endemic is unsurprising.

This is a time to contemplate balance in our lives and how to achieve it. We are extraordinarily fortunate if we can simply reduce our energy expenditure to minimal during the winter but we can respect our body's needs by taking the opportunity to sleep longer, exercise briefly in the (very) fresh air, eat good nourishing foods made from natural ingredients and generally be gentle with ourselves. Spring will then find us rested and recuperated, in tune with the burgeoning of nature, relishing the longer days, returning warmth.

And just as the light and darkness

of nature need to be in balance so we will benefit from appreciating the light and darkness in our own beings for without the light there cannot be darkness and without the darkness there is no light. If we constantly focus only on the light we will become unbalanced, imagine a plant with one side only ever turned to the window, it will grow weakly and probably topple over, but with an appropriate balance of light and darkness it will grow sturdily and straight. So although the times of light are much easier to handle, enjoyable, it is the times when we struggle through the darkness that are making us strong.

Just as we are all individuals there is no one recipe that applies to everyone. Some people will want to detox and start a new eating regime, others will want to address niggling

COLIN'S MARKET GARDEN DICTIONARY

OFF FOUNDRY SQUARE



Apple (ap:pl)

WRONGLY BLAMED FOR SEX, CHANNEL 5 AND THE BABY BOOM OF THE 1960'S DUE TO BAD PRONUNCIATION OF A GARDEN SNAKE WITH A SPEECH IMPEDIMENT. SHOULD BE SPELLED:-

A PILL (a:pil)

ORIGINALLY INTENDED AS A CONTRACEPTIVE NOT TO BE SWALLOWED BUT KEPT PRESSED BETWEEN THE KNEES

SOURCE: JEREMY (Darwin) JOSLIN's WORK "ORIGIN OF THE VEGETABLE SPECIES"



“ROADCRAFT”

School of Motoring

Detailed and Patient
Tuition from Chris Miller
D.S.A., A.D.I., M.I.A.M
Learner, Pass Plus and
Advanced Driver Tuition

- *FREE STARTER PACKS
- *DVD VIDEO CD ROM LOAN
- *MOCK TEST PRE-TEST
- *INSTRUCTION FOR
NERVOUS DRIVERS
- *NIGHT DRIVING TUITION

0800 026 0293
01736 752800 (24hrs)

Staying safe on our roads for life.

however impossible the end may seem right now, starting is what counts and you may be certain that when you are following your heart you will be helped and guided and what you encounter along the way may greatly surprise and please you... often we find much much more than we could have envisaged!

There is masses of help out there if you need a new view on things; I am now a qualified Bush Flower Essence practitioner, as you know I can thoroughly recommend my homeopath Dave Masters and there is a collection of leaflets and information from various practitioners available in the shop. May all your dreams be fulfilled. With love and light.

Felicity, Hayle Healthfoods

THE SEA

health problems or review their supplement programme or work on their personal development through flower essences. Whilst there are as many books on the subject as there are people to read them it is really a situation where you need to be guided by your own interests and enjoyments and often it is a matter of trial and error as to what you can or cannot fit into your programme. But as with everything else in life, the journey is the object, there is nothing you try that does not teach you something and mistakes are the pathway to knowledge – if you knew it all already there would be absolutely no point being here.

So leap into spring with hope and belief, start on your life's ambition, dearly held wish or secret desire,

*Today the sea is happy with welcome
open arms
Inviting everybody to come enjoy
his charms
He's feeling very friendly, purring
his happiness
Chuckling almost wickedly whilst
wetting Grandma's dress
A toddler laughs and tumbles down
into the frothy sand
When playful ripples tickle him
with lacy watery hand
And at sundown sea is lit with
orange, red and gold
And gently waves goodbye to all his
friends both young and old*

But last week he was angry and
would not let me near
Fiercely banging stones about and
crashing on the pier
He whipped the seaweed on the rocks
and growled ferociously
Then roared with furious intent
what he would do to me
if I should dare, should I ignore his
warning so intense
if I should venture to intrude upon
his world so dense

He made it clear, were I so bold my
punishment would be
Engulfment and absorption, un-
ceremoniously

And then another time I sat beside
him on the wall
He was so still and pensive ignoring
one and all
Sullen and morose he looked pro-
foundly menacing
From grey to deeper grey then black
silently threatening

So though we view the sea at times
like soft and loving pet
where we can swim and jump and
play and generally get wet
we also must respect the power this
massive body holds
Remember to watch carefully the
signals it unfolds
Be not afraid to socialize with this



J C ELECTRICAL



Your complete 24hr Electrical Service

City & Guilds Qualified

Tests to 16th Edition BS7671

**Rewires, New Build, Lighting, Extra Sockets,
Showers, Heating**

Prompt Reliable Service

All Work Guaranteed

Free Estimates



Hayle 01736 754543

Mobile 07739 577 549



SINGER & PFAFF SEWING CENTRE

Mr & Mrs D.M. Girling

*Authorised Singer Service
Centre for Cornwall*

ALL MAKES SERVICED

**11 JOHN STREET
TRURO
01872 225168**

New & reconditioned machines
always available.

great majesty

*As long as we are vigilant our
friend he'll always be*

*For like another creature wild we
have to understand*

*His nature we will never tame his
will we can't command.*

Nicolette A. Bodilly



Pedal Back The Years

All events are designed to help those who have not cycled for a long time to regain confidence on a bicycle. The routes are short, fairly easy flat and easy to cycle: events are leisurely in pace with rest stops and a

refreshment break. Two volunteer support riders attend each ride.

St. Michael's Mount (alt. Sundays)

April 10th & 24th, May 8th & 22nd

Meet at Harbour Car Park, Penzance (Phone Project office for hire bikes.)

Tehidy Country Park (alt. Sundays)

April 3rd & 17th, May 1st, 15th & 29th

Meet at South Drive car park, Tehidy (Phone Project office for hire bikes.)

Loe Bar (alternate Saturdays)

April 16th & 30th, May 14th & 28th

Meet at Loe Valley Car Park, Helston (Phone Project office for hire bikes.)

Bissoe Tramways (alt. Mondays)

April 11th & 25th, May 9th & 23rd.

Meet at Bissoe Tramways Cycle Hire, Old Conns Works, Bissoe. Phone direct on 01872 870341 for hire bikes.

12 noon start for each ride: please arrive 15 minutes early if you have a hire bike.

Project Office:

Pedal Back the Years, John Keay House, Tregonissey Road, St Austell, PL25 4NQ

Tel: 01726 627816

Email:

david.readman@centralpct.cornwall.nhs.uk

Website:

www.pedalbacktheyears.info

Hayle Library News

Hayle Library has on offer for the month of April two for the price of one on all DVDs, videos, CDs, games and talking books.

WIPE OUT YOUR FINES!!! If you are aged 12 or under, pop in and

clear your fines by the 30th April.

Storycircle is at its new time of 3.15 – 4pm every Wednesday. All under 11s are welcome to join in with music, crafts and stories.

Mary Briggs is displaying her work within the library this month, do come in and see her wonderful artistic collection.

We are open at 9.00am till 6pm every day apart from our closed day of Thursday and 9.30 – 12.30 on Saturdays. If you can't get in at these times you can use our free reference library service on your own computer. Enter your card number to use Newsbank (national newspapers), Encyclopaedia Britannica, Oxford English Dictionary and Xreferplus, via www.cornwall.gov.uk/library and click on cyberlibrary.

If you don't have internet access

there is Enquiry Express. For contact to a real person who can help you find the information you require the number is 0800 032 2345.

The staff at Hayle Library.

MARY BRIGGS ART EXHIBITION

April sees the latest exhibition of Mary's work at Hayle library. Mary continues with her favoured themes of local landscapes from Godrevy, Gwithian and Hayle harbour to St Michael's Mount and St Anthony, for example. Capturing the detail, colour and texture of the subject is of great importance in her work.

Mary was born in Marazion and has lived in Hayle for over 25 years.

From an early age she has had an

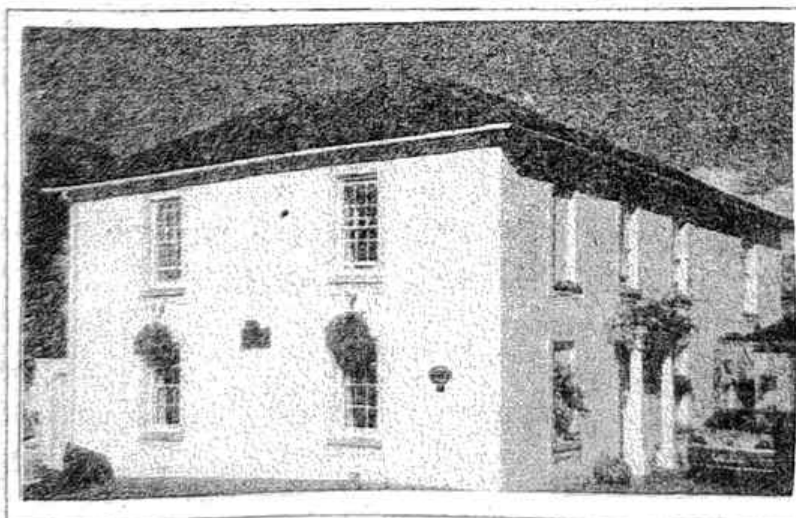
CRANFORD HOUSE BED & BREAKFAST

OPEN ALL YEAR—CHILDREN WELCOME

**ALL ROOMS
EN-SUITE**

**NON
SMOKING**

**OFF ROAD
PARKING**



LUXURY

HOLIDAY

APARTMENT

TO LET

PETER & PEGGY DARLOW

01736 752618

Foundry Hill * Hayle * Cornwall * TR27 4HW
cranford-guesthouse@talkgas.net

interest in expressing herself artistically via such things as cake decorating, flower arranging, home decorating and gardening. Around ten years ago she found some oil paints and brushes she had forgotten about and decided to try her hand at using them. Her first painting, which she still has, was of a thatched cottage. This gave her a feel for oil painting, and, encouraged by her husband, she has continued to develop her love for the medium. She finds this a most pleasurable and rewarding hobby, and from that first small painting, she now enjoys painting on quite large canvasses.

Her painting have been sold locally and all over the UK and other parts of the world such as Canada, Germany and Ireland.

She has had exhibitions at the Hayle

Library on several occasions, and this year these will be in April and November. Mary invites one and all to view some of her latest original oil paintings, and she hopes you will get pleasure from her work. Signed prints and cards will also be available.

Throughout the year, Mary's work is available at Bigglestons at Penpol Terrace in Hayle.

Continued from last issue

Charles Thomas Eustace

Selling the copper

As it was his source of income, Charles Eustace always thought positively about sales and devised numerous ways of selling his work.

Many pieces were made to order for

SUITES & SOFAS CLEARANCE WAREHOUSE

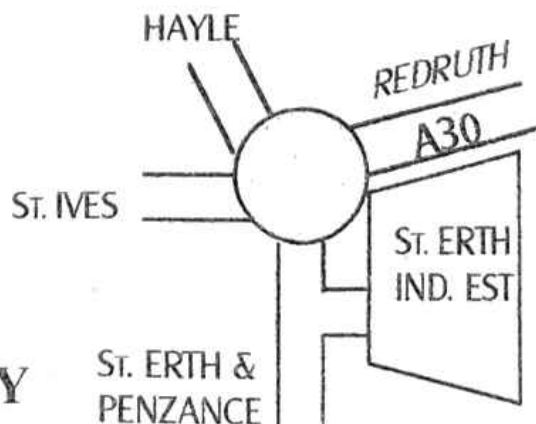
UNIT P, ST. ERTH INDUSTRIAL ESTATE, CANONSTOWN, HAYLE
*BANKRUPT STOCK, MAIL-ORDER RETURNS, FACTORY CLEARANCES,
END OF LINES ETC.*

SUITES, SOFAS, ARMCHAIRS & COMBINATIONS
AVAILABLE AT CLEARANCE PRICES

FOR DETAILS OF OUR CURRENT OFFERS
AND TO VIEW AT ANYTIME
PLEASE PHONE

07779 760686

**OR VISIT OUR WAREHOUSE
BETWEEN 11am - 4pm DAILY
WHEN WE'RE OPEN TO VIEW**



the people of Hayle and he was always willing to fulfil requests for any occasion from wedding gifts to christening jugs for local chapels.

One resourceful tactic was the display cabinet on the front garden wall of 13 Clifton Terrace filled with examples of his work. This was positioned to catch the eye of holiday makers and the day-trippers to Hayle Towans on their way to and from Hayle railway station. During Hayle Regatta the display cabinet was particularly successful. Though never locked, his daughters recall carrying in the cabinet every evening during the holiday season.

In 1936 Charles Eustace employed a travelling salesman. Mr Basil Spafford knew the Eustace family from his holidays on Hayle Towans, where he stayed in a chalet built by the Eustace brothers. More importantly, for a 1930s sales representative, he owned a car. Samples of Eustace copper could now be shown to the souvenir and crafts shops of Cornish and other holiday resorts. Basil Spafford also travelled the country, often as far as Scotland, with his car boot full of copper work samples. It was sometimes many weeks before he returned with orders. These were then made or taken from stock, packed in old tea chests and dispatched by GWR from Hayle Station.
Continued in next issue

REVITALISE! HAYLE COAST AND COUNTRY

Although it might seem that very little is happening in the Revitalise! project, a lot is going on behind



Family Law Specialists

Divorce & Separation
Financial & Property Disputes
Children
Domestic Violence Injunctions

***For a FREE initial
interview***

Call Antony Vingoe on
01736 752424

Solicitors Family Law Assoc. Accredited Specialist
Law Society Family Panel Member

the scenes.

Since the last report another Community Agent, Ray Tovey, has been employed to help to push the project forward, particularly now that we are undertaking the community Health Check, which is a vast and detailed piece of work. Ray is currently Chairman of Gwinear and Gwithian Parish Council and his experience in local affairs will be invaluable to the process.

As far as the health Check is concerned, this is a snap shot of the area as a whole giving details of local life, employment, health, leisure facilities, environmental issues and many more. You may have been asked to help with some aspects of it; indeed we have completed about 60% of the document but still need help on certain subjects, particularly transport.

JOLLY BODGER WAREHOUSE

77 FORE ST
HAYLE
01736 752091



WE STOCK:
**BLACKFRIARS
PAINTS &
PRODUCTS.**
FLO GAS
CAMPING GAZ..
HARDWARE,
GIFTS & SOUVENIRS
AND MUCH MUCH MORE!
HOUSE & CAR KEYS CUT

Once completed, the Health Check will provide enough information to enable us to formulate the local Strategic Plan, which will be able to use as a basis for applying to funders for the projects that we are hoping to complete.

Last year at the various presentations in Hayle, St Erth and Gwinear/Gwithian you told us what you hoped for and how you want the

area to develop in the future. We are doing everything possible to ensure that we can achieve this, and if you think you can help in any way please call us on 01736 755448 or email us at roger@haylemcti.wanadoo.co.uk.
Roger Winterburn – Community Agent 'Revitalise! Hayle Coast & Country'.

“SEND A COW” CHARITY

Further to the article by Taurifax in the last Pump, regarding the growing trend for Christmas presents taking the form of the donor, rather than buying a present, using the money to send a cow, mosquito net, water pump or similar to an African village, we have had two communications giving us details of charities which can arrange this.

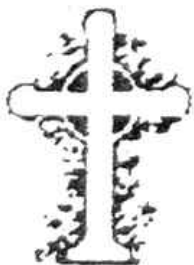
First, our respected friend John Nash has given us the following contact details:-

“SEND A COW – LIVESTOCK FOR LIFE”

www.sendacow.org.uk or
info@sendacow.org.uk

Tel. 01225 874222 Fax 01225 872008

We have also heard from Brianna Breeze, who tells us that the charity



W. J. WINN

FUNERAL & CREMATION DIRECTORS
PRIVATE CHAPELS OF REST
24 HOUR SERVICE

69, FORE STREET
HAYLE
01736 752124

&

TRENWITH TCE
ST. IVES
01736 793029



World Vision does a catalogue with mosquito nets, chickens etc. for the third world. Brianna doesn't have any more details, but the Eden Project has the catalogues, and doubtless World Vision have a website.

Thanks for your help, and remember, you don't necessarily have to wait till Christmas to contribute to these exceptionally worthwhile charities.

FREEEZE-STER!

What on earth became of global warming, I pondered, as I donned overcoat, scarf and gloves on Maundy Thursday (that's the day before Easter begins) to go and get my morning paper. I'm not of a religious bent myself, so maybe someone out there could explain to me how it comes that if Jesus Christ had a fixed date for His birthday, His crucifixion and resurrection is a movable feast? Once upon a time, of course, Good Friday had a special feel, even to non-believers, and literally everything shut down, there were no newspapers and people just generally relaxed. It was more like Sunday than Sunday was, but of course Sunday isn't Sunday anymore either (personally I blame Thatcher).

So my proposal is, why not have a fixed annual Bank Holiday at the end of April, of a similar length – it doesn't have to be called Easter, which could still be worshipped at the appropriate time by the believers, and of course some years the new holiday would coincide with the original

Mrs Terry Lello **County Councillor**



If you need any assistance with matters relating to County, District or Town Council I would be pleased to help and can be contacted at:-

Telephone: 01736 757507

Mobile: 07890 192587

email: tlello@cornwall.gov.uk

Easter. I believe that for a largely secular society (have you seen church attendances lately?) this would make a lot of sense; families could plan a nice break with a reasonable chance of warm weather, the tourist industry would benefit, schools would have regular term lengths and so on. Like the ridiculous annual changing of our clocks (which this year meant that Easter Day was only 23 hours long), I can't see what the problem is – but what do I know? In the absence of an unexpected outbreak of common sense on the part of the powers that be, I'll just continue to huddle round the celebratory Easter barbecue trying to pretend my goose bumps haven't got goose bumps!

Taurufax



Moving House?

Whether buying, selling or re-mortgaging

For a FREE estimate

Phone Julie Blewett on

01736 752424

Or call into our offices at
75 Fore Street
Hayle

THE MONEY TREE

*The Money Tree
Grows in the yard.
My boy can see it
Very clear.
"Mom, can I have.....?
He looks at me
So eagerly!
I look outside.
Oh, how I wish
That I could see
The Money Tree!*

Margaret Scott



This newsletter has been assisted by a grant from the Neighbourhood Renewal Unit.

HAYLE PUMP – A VERY URGENT PLEA!

As we have previously mentioned on more than one occasion, the Hayle Pump is prepared by a hard-pressed team who are not so much skeletal as almost invisible. Our annual election of officers takes place in October and we have received advance warning that due to a combination of ill-health and other reasons, two of our leading members will be standing down. In advance of this it is critical that we bolster our team with some new members.

The Hayle Pump members are unpaid volunteers, generally retired or semi retired. (But see the letters page – our Youth Correspondent of 10 years ago is now a professional journalist!) Ideally we are looking for people who are good team players and have a reasonable standard of literacy. Basic computer skills would be useful but not essential, because apart from the transcription of articles there are equally important tasks such as distribution and collation. The hours are not demanding but basically we have a peak two weeks every two months leading up to each issue.

If you think this might be for you, please give one of the officers on page 2 a bell. **This really is important, because without the extra help we will soon need, the future of the Hayle Pump could be in jeopardy.**

Goudie Charles, Editor

INDEX OF ADVERTISERS

All Aerials...14	Footsteps...27*	Murt's TV...26*
Angove Sports...28*	Furniture Warehouse...34	O'Dell Signs...28*
Barton Print...5	Hayle Backpain Clinic...8	Orchard, Alan...27
Biggleston's...6*	Hayle Holistic Clinic...39*	Penpol Garage...23
Brookvale...20	Hayle RFC...4	Philp's Pasties...13
Button, Des...12	House Exchange...9	Reiki Healing...6
Café 1...3	J C Electrical...31	Roadcraft...30
Central Garage...19*	Jackson, Jennifer...18	Singer & Pfaff...32
Colin's M'ket Garden...29*	Jolly Bodger...36*	Smithy's Tool Hire...40
Country Skittles...25	Jool's Mobile Haircare...5	S.V.G...9*
Cranford House B & B...33	Keast, F.L...24 *	Sylvia's Exercise...21
Dylan's Café...10 *	Lello, Terry...37	Thurstan Hoskin...35 & 38
Farm Shop...7*	Maurice (Gardener)...3	Trevassack Nurseries..16 *
Fernleigh B & B...11	MDG Plumbing...15	Wade, Neil...17
Footsteps...17*	Moyse, David...22 *	Winn, W.J...36

*You can pick up a copy of the Pump at those advertisers marked with a * also at Hayle Library, Day Care Centre, Community Centre, Bodriggy Health Centre, Copperhouse P.O., Forbuoys, St. Erth P.O., Connor Downs P.O., and many other place in Hayle.*



Hayle Holistic Beauty Clinic

FOR INDIVIDUALISED BEAUTY AND
SPECIALISED COSMETIC TREATMENT BY
AWARD WINNING "RAMA"

All beauty treatments by award winning therapist.
Specialised cosmetic treatments.
Collagen, Botox Injections, Thread Vein treatments.
Gift Vouchers . Free Consultation.
Special rates for Senior Citizens & School Children.

01736
755656

SMITHY'S

TOOL HIRE & SALES

HIRE TOOLS FOR TRADE & DIY

UNIT N ST. EARTH INDUSTRIAL ESTATE

(THE OLD CREAMERY, A30 HAYLE - PENZANCE ROUNDABOUT)

**YOUR LOCAL INDEPENDENT TOOL HIRE SHOP
OFFERING YOU THE BEST IN HIRE RATES, BACKED UP
BY A SERVICE - SECOND TO NONE.**

- * Mini-Digger
- * Mixers
- * Compactors
- * Trestles
- * Shredders
- * Power Barrow
- * Breakers
- * Stihl Saws
- * Acrow Props
- * Alloy Towers
- * Roof Ladders
- * Floor Sanders
- * Work Top Jigs
- * Petrol Strimmers /
Hedgetrimmers
- * Rotavators
- * Carpet Cleaners
- * Pressure Washers
- * Steam Wallpaper
Strippers
- * Block Splitters

AND LOTS MORE!

RING US NOW ON

01736 75 72 77