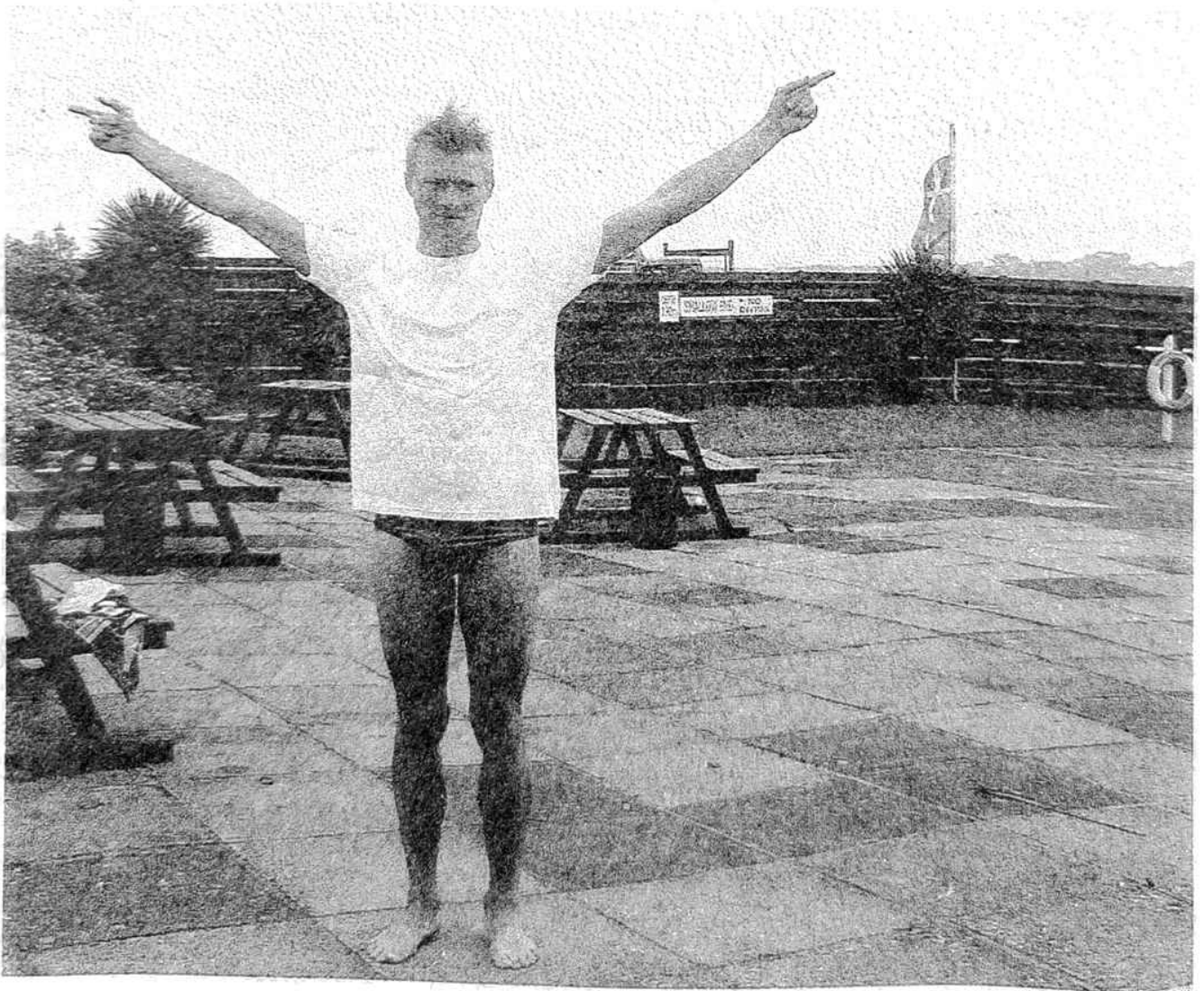


HAYLE PUMP NEWSLETTER

Circulation 2,500. FREE copy, please take one. Made possible thanks to our advertisers



Nathan Jolly wins the Rick Rescorla Hayle Triathlon

**Hayle Pump Newsletter,
Unit 14, Pratt's Market, Chapel Terrace, Hayle
TR27 4AB**

email: haylepump@theturks.fsnet.co.uk

*If you wish to advertise in the Pump
please contact Sarah Turk at the
address /phone no. below.*

Editorial Team Members

Donna Anton
01736 753184

Tim Appleton

N.A. Bodilly

Goudie Charles (Editor)
01736 757351

Jeff & Sarah Turk
35 Penpol Terrace Hayle
TR27 4BQ, 01736 752319

Judith Venning
01736 753108
jvenning@worldline.co.uk

Roger Winterburn (Secretary)
01736 756393

You can leave your news, letters,
notices etc. at our unit in the
market, or with any of the team.
You can also use any of our drop-
off points:

At Foundry
Biggleston's Hardware
Colin's Market Garden

At Copperhouse:
Jolly Bodger
David Moyse Clothing

Advertising Rates

Half page (130 x 95mm) £20.00
Quarter page (63 x 95mm)..... £11.00
Eighth page (63 x 42mm)£6.00

The Hayle Pump would like to remind readers that items, or articles and Public Notices are accepted as points of view and are not necessarily the opinion of the Newsletter Team. Correspondents are reminded that all material submitted must be signed with their name and address, and if possible, telephone number for validation. This will not be printed if you don't wish it to be. We reserve the right to refuse or edit items sent to us.

HAYLE PUMP

SUBSCRIPTION SERVICE.

For those readers who would like a Pump sent to family or friends elsewhere in the UK, or local people unable to get into Hayle to collect a copy, we operate a postal subscription service. Simply send us the delivery name and address CLEARLY PRINTED, together with £2.30 to cover the cost of stamps and envelopes, and we will send a year's issues (6 copies) of the Pump as soon as it is published. (UK addresses only—please make cheques/postal orders payable to "Hayle Pump Newsletter")

***Closing date for next issue:
20th September 2005
(advertis subject to space
availability)***

The Rick Rescorla Triathlon 2005 Sunday 24th July

Despite the weather being grey and overcast with a slight drizzle, there was quite a crowd of people gathered on King George V Memorial walk for the start of this year's event.

At approx 9.00am the 150 brave competitors plunged into Copperhouse Pool and made a circuit of 1,500 metres before running up the slipway to tear off their wetsuits, don their cycling gear and jump on their bikes for a 25 mile ride to Marazion and Helston and back to Hayle. What was astonishing was the speed at which they swam the Pool. (The spectators marvelled at the swimmer's courage and were very glad they weren't participating!)

The next stage was a 6.2 mile run to Connor Downs and back along the King George V Memorial Walk to the finishing line.

The winner was Nathan Jolly from Camborne, our hunk on the cover, in a time of 2 hours and 2 minutes. Other winners were Helen Parkinson from Brixham in Devon and the 40+ ladies winner was our very own Dr. Anne Maskell from Bodriggy Health Centre, a shining example to us all! Local winners were Paul Friday and Trish Merrett, incidentally it was her first ever triathlon. The first club winners were the Mounts Bay Harriers and the first team was Team Sim.

The event was organised by the newly formed Hayle Triathlon Club, with sponsorship from the Cornish

Wanted: Council Exchange
2 Bedroom Bungalow midway
Southampton/ Portsmouth for
Housing Association 1 or 2
Bedroom Bungalow or Flat/
Maisonette at Hayle
Tel: 01489 895102

Arms, St Austell Brewery and Baltic Pine. The Co-op and Burdells Fish & Chip Shop also kindly donated prizes.

The Mayor of Hayle, Mrs Terry Lello made the prize presentation in Jon Daniels' new beer garden at the Cornish Arms. We thank Mrs Lello and Hayle Town Council for the use of the Pool facilities, Jon Daniels and all the other generous people who have helped us.

Proceeds will go towards Hayle Tri-

Graham Watts

L PASS L

School of Motoring



FIRST **£10** LESSON

Then £15 per lesson

Tel: 01736 756608

Mobile: 07990 668329

www.web-pro.co.uk/graham-watts

The Farm Shop **31 Penpol Terrace** **Hayle**

**Open 6 days a
week 8am - 5pm**

**For all your local
produce, fruit,
vegetables, plants &
flowers, free range
eggs, local honey,
and lots more.**

**Local tomatoes, runner
beans, & strawberries**

athlon Club with the view to setting up a junior section, also to Hayle Canoe Club and Hayle Air Cadets.

Karen & Crispin Hayden
01736 756204



**KIND OF
CORNISH**



With the pernicious influence of TV and other media, children today often adopt the speech patterns they hear on their favourite programmes. As a result, the characteristic sound of local speech is disappearing all over the country, and regrettably Cornwall is no exception. Plumstone Productions, an enterprising new production company based in Penzance, aims to do something

about this loss of local dialect. They have gathered together a group of Cornish writers with authentic local voices, and aim to release CDs on a regular basis.

"Jan Stone – A Life Based on the old Newlyn Yarns" was written by Randle Hurley, and is a selection of fictional stories based on a real-life West Cornwall character. It is a 2CD set, and the narration, following Jan from childhood to maturity, is beautifully told using, as one would expect, the Cornish vernacular, with strictly local actors. The yarns are well paced, and very amusing, with a judicious use of incidental music by the Golowan Band. One of the stories is "A Trip to Hayle", a hilarious account in which Jan inadvertently catches the non-stop train to London and amongst other adventures falls into the hands of, and repels, a woman of ill repute. (Sadly, he never makes it to Hayle.)

Any attempt to preserve dying local history and dialect is to be welcomed, and here at the Pump we wish Plumstone every success. Future releases will include Judith Cook's adaptation of "A Cornish Childhood" by A.L. Rowse; for further information visit:- www.ConnectCornwall.com

Many years ago I was involved in running the Jazz and Folk Cellar in Penzance. The club lasted for 3 years, and featured jazz and folk from April to October. Many now-famous names played at the club and it is still fondly remembered by those who were around at the time.

One of the first folk artists to appear was a teenager called Chrissie Quayle who was at that time known as

'The Mermaid of Zennor'. Chrissie subsequently left Cornwall, and became an accomplished performer on flute and alto sax. She has played in and led a number of different bands, working in London and elsewhere, and has kept touch with her West Cornwall roots by appearing here on a regular basis.

Her latest group, which she co-leads with Russell Roberts, is called Masque, and their new CD is called "Look Out". The material is very much in the folk/world music category, with the duo augmented by additional musicians on each track playing a variety of instruments. Interesting original compositions by Quayle and Roberts are interspersed with other world items including some traditional Serbian and Turkish melodies. The beguiling original 'Sleep' features a

HEAD TO TAIL

EQUESTRIAN
FOR HORSE AND RIDER
at POOL MARKET



Sat. & Sun.

Aug. 20% off stock
mob. 0775 990 5276
mob. 0781 645 1454

lovely flute solo by Chrissie. Fans of the legendary local band Zambula will be interested to know that vocalist Wendy Herman appears on two tracks, 'April' and the Turkish 'Uskardara Giderken'.

From her early 'Mermaid' persona to the present day, Chrissie Quayle has produced consistently high quality music, and this is an excellent release by a notable local talent.

Both the review CDs, and many

Goldstephen House
13 Conker Road
St Erth Praze
Hayle
TR27 6EQ



01736 850363

OPEN DAILY
10.00am – 6.00pm

WIDE RANGE OF QUALITY PLANTS
AT AFFORDABLE PRICES



other items by Cornish artists, as well as a large selection of classical music, jazz and nostalgia, can be purchased from:-

West Penwith Music
Union Street
Penzance (Tel. 01736 364440)

Revitalise! Hayle Coast and Country

Just when you thought it was safe to go out someone approaches you with a clipboard and asks you what you would like to see happen in Hayle over the next 20 years.

Over the past few months the Revitalise Group has been compiling a *Health Check*, which is a document looking at the current state of every aspect of life in Hayle and the sur-

rounding area.

We are working with consultants Hannah Reynolds Associates who are very experienced in organising projects and obtaining funding. You may have met some of their team during their street survey or at the Kneehigh event and they will be helping us through this stage of the project.

We still welcome new members to our Steering Group as there are still some areas of community life that need greater representation in our organisation and we would be very glad to hear from you.

Roger Winterburn Community Agent
Revitalise! Hayle Coast and Country
Revitalise Office, 2 Dowren House,
Hayle TR27 4HD

Tel 01736 755448 e.mail
roger@haylemcti.wanadoo.co.uk

AWARD WINNING

Safeclean

The furnishing care specialists from **GUARDIAN**

Recommended
by leading
furnishers
throughout
the U.K.

Superb Cleaning & Anti-Stain Protection of Carpets, Upholstery, Curtains & Leather

- Oriental Rug, Tapestry and Antique Specialists
- Leather Specialists
- Flame Retarding
- Spot, Stain & Odour Removal
- Carpet Patching & Re-tufting

CORNWALL OFFICES

ST. AUSTELL
01726 64560

FALMOUTH/HELSTON
01326 319704

Head Office: 152 Milton Park, Abingdon, Oxfordshire OX14 4SD

JUNGLE BARN AT PARADISE PARK

Have you visited Paradise Park recently? If not, then you'll be amazed by their new Jungle Barn indoor play centre, which is a fantastic new facility for families.

Open all year round, the Jungle Barn makes Paradise Park much more of an all-weather attraction.

Paradise Park was always a good choice with exotic birds in beautiful gardens, feeding and free flying events, the fun farm and wildlife quiz, but now if you don't know what to do with the kids on a rainy day, this is the answer - it will keep the whole family occupied for hours!

Entry to the Jungle Barn is included in the admission price to the Park - currently £8.50 for adults, £7.50 for children and £6.50 for seniors, but watch out for regular special offers in the Cornishman.

Director Ali Hales, daughter of Mike and Audrey Reynolds who started the Park in 1973, gave me a tour of the building. The play equipment and furniture are bright primary colours, and everything has been designed to provide a high level of safety too. There are two floors, with a seated area for those who just want to watch on each level. There is even a balcony where those who want a quieter place to sit, can look out over the Park and get a bird's eye view of the daily flying display which features parrots, toucans and choughs.

FOOTSTEPS

27 Penpol Terrace,

Hayle

01736 757735

*For all your beautiful
summer footwear.*



The Park and Jungle Barn open at 10am every day of the year (except Christmas Day), so I can imagine that on a gloomy winter's day it will be a great place for many families in Hayle to meet, have a chat and for the children to get some good healthy exercise.

If you think that you will make the Jungle Barn a regular place to visit,

CORNISH MEADOWS GARDEN SERVICES

Grass Cutting

Hedge Trimming

Strimming

Turfing

Patio Cleaning

Fencing

Friendly & Professional Service

For Free Quote Call Jed on

07790839568

Fernleigh'



**BED & BREAKFAST
EN SUITE
COLOUR TV
TEA & COFFEE
NON SMOKING
ALL ROOMS**

**26 COMMERCIAL RD
HAYLE
01736 752166**

New Reiki Healing Clinic in the Hayle Area

Reiki is an effective "hands on" healing method originating in Tibetan medicine, aimed at restoring the recipient's vital energy. If this energy is disrupted, illness follows. The treatment is very gentle, and you can expect to feel relaxation during a session.

Treatments last for an hour and cost £20. Some concessions are available.

For further information and to book your treatment call Helen on 01736 756772

then the Return Ticket, at £2.50, is a bargain. Season Tickets, at £35, can work out good value if you live close enough to pop in every week.

Judith Venning

REIKI PRINCIPLES

Just for today, I will let go anger.

Just for today, I will let go of worry.

Just for today, I will be kind to my neighbour and every living thing.

Just for today, I will do my work honestly.

Just for today, I will give thanks for my many blessings.

Dr Usui Mikao

COUP DE THEATRE FOR HAYLE!

Hayle receives a major cultural boost this summer with the visit of the internationally known Kneehigh Theatre group, who are performing "A Very Old Man with Enormous Wings" on the South Quay, Hayle Harbour, from 26th July To 7th August.

Apart from the theatrical performance at 8pm, the site opens at 6.30pm to allow ticket holders to enjoy the Craft and Food Market, with Cornish food and drink, international crafts, and a fully stocked bar! As for the performance itself, the Guardian Newspaper for 25th July, in its "Pick of

the Week" column, stated:-

"Bill Mitchell brings this production based on a Gabriel Garcia Márquez story to Cornwall after it was premiered to huge acclaim in Malta last year. A large-scale promenade spectacular, it tells the story of a man with gigantic wings who crashes to earth near a remote village. The production includes a massed choir, illusions and musicians from six countries, as well as a man who really does fly."

Here at the Pump we hope the event will be a huge success for the town, and will encourage similar ventures in the future.

Pump theatrical reporter

What's purple and shouts "Help!"

A damson in distress.

HAYLE IN BLOOM

On Tuesday, 19th July 2005, Hayle was judged for the Britain in Bloom Awards.

The Hayle in Bloom Committee wishes to thank most sincerely the Hayle and District Lions Club, Councillors John Coombe and Dick Horwell and all those who were up at 5.30 am picking up other people's rubbish and clearing the dog fouling etc. Your dedication and efforts are very much appreciated and did make such a difference. Hayle is looking absolutely beautiful this year thanks to our wonderfully dedicated gardeners, Matt, Mike and Bob and also to the private garden owners whose gardens are looking so lovely.

Special thanks to Alison and Nick at

Westone

GARDEN ACCESSORIES & PET SUPPLIES

THE CAUSEWAY, HAYLE
(MAIN SHOP)

Also
at

GUILDFORD ROAD INDUSTRIAL
ESTATE, HAYLE

NEW STOCK ARRIVING WEEKLY!

We are open at both branches selling:

Seasonal plants, Suttons seeds, Pots, Tubs, Troughs, Bird seed, Fat balls, Nest boxes, Bird baths, Rose arches, Garden ornaments, Sun dials, Patio slabs, Stepping stones, Animal feed, Horse feed, Shavings, Chip-pings, Cement, Coarse grit, Path edgings, Wall copings, Pier caps, Wrought iron work, Statues, Garden benches, Picnic benches, Wooden planters, Hot Tub spas & chemicals, Gas, Coal, Charcoal, Ice creams, Cold Drinks, Strawberries.

ALL AT CHEAP PRICES!

Hot Tubs

(AT THE CAUSEWAY)

01736 - 752511

Now In

Paradise Park for the wonderful hospitality and superb buffet. Paradise Park is looking so beautiful.

We now wait in great anticipation to hear the results in Somerset in September.

Thank you one and all for all you have done to make our town look so colourful.

Marjorie Roberts
Chairman - Hayle in Bloom

DID I READ THAT SIGN CORRECTLY?

In an office:

TOILET OUT OF ORDER... PLEASE
USE FLOOR BELOW

In a Laundromat:

AUTOMATIC WASHING MACHINES

PLEASE REMOVE ALL YOUR
CLOTHES WHEN THE LIGHT GOES
OUT.

In a London department store:
BARGAIN BASEMENT UPSTAIRS.

In an office:

WOULD THE PERSON WHO TOOK
THE STEP LADDER YESTERDAY
PLEASE BRING IT BACK OR FUR-
THER STEPS WILL BE TAKEN.

In an office:

AFTER TEA BREAK STAFF
SHOULD EMPTY THE TEAPOT
AND STAND UPSIDE DOWN ON
THE DRAINING BOARD.

Outside a secondhand shop:

WE EXCHANGE ANYTHING -
BICYCLES, WASHING MACHINES
ETC. WHY NOT BRING YOUR
WIFE ALONG AND GET A
WONDERFUL BARGAIN?

The Mad Hatter

Tearooms and Bed & Breakfast

Breakfasts, Lunches, Snacks,
Cream Teas & Home-made Cakes.
Tea Garden. Dogs Welcome



Homely atmosphere with friendly people.
Open all year Mon-Sat. 10am-5.30pm
Double, Twin & Family Room.
Overlooking Hayle Estuary with TV, Tea &
Coffee Facilities

73, Fore Street, Copperhouse, Hayle TR27 4DX
Tel: 01736 754241

Notice in health food shop window:

CLOSED DUE TO ILLNESS.

Spotted in a safari park:

ELEPHANTS PLEASE STAY IN YOUR CAR.

Seen during a conference:

FOR ANYONE WHO HAS CHILDREN AND DOESN'T KNOW IT, THERE IS DAY CARE ON THE 1ST FLOOR.

Notice in a farmer's field:

THE FARMER ALLOWS WALKERS TO CROSS THE FIELD FOR FREE, BUT THE BULL CHARGES.

On a repair shop door:

WE CAN REPAIR ANYTHING. (PLEASE KNOCK HARD ON THE DOOR. THE BELL DOESN'T WORK.)

Submitted by Barry Thomas, Illogan, Redruth (Former St Erth boy)

Over 50s Leisure Week 19 – 25th Sept.

As some residents of Penwith and Kerrier may be aware an extremely interesting and active week of leisure and recreation activities took place in April. For those of you who were not aware, don't worry the Over 50s Leisure Week is back, this time in September 19th to the 25th!

The weeks are organised by the West of Cornwall LEAP (Local Exercise Action Pilot) project in conjunction with Penwith District Council and Kerrier District Council. The activities take place right across Kerrier and Penwith, using sports clubs, leisure centres and other leisure providers



Brookvale

Residential Care Home for the Elderly

Family run home, by the resident proprietors Mr & Mrs Broadbridge & Mrs Pleasants RGN, which prides itself on a personal and caring environment. Situated in the centre of Hayle close to all amenities.

Private and DSS residents welcome whether short or long stay. Fully registered with the CCC, and a member of the Cornwall Care Homes Association.

- all necessary care & assistance supplied
- large garden and patios
- two lounges & spacious bedrooms
- full 24 hour care & central heating
- weekly hairdresser & chiropodist
- domiciliary services, day care & M on W

6 Commercial Road

Hayle, Cornwall TR27 4DG

Telephone: 01736 753608



Moving House?

Whether buying, selling or re-mortgaging

For a FREE estimate

Phone Julie Blewett on

01736 752424

Or call into our offices at
75 Fore Street
Hayle

such as golf clubs and the adult education service. All activities are fun, led by suitably qualified coaches and most importantly are FREE of charge.

The April week was enormously successful. There was a wide range of activities including bowls, walking, pilates, tai-chi, cycling, swimming, windsurfing, sailing plus many more.

The week in September will include similar activities and will be a great chance to try something new, meet new people or just have some fun while being active. If you think this may be your sort of thing, its easy to book up.

Step 1: Ring the booking line on 01209 313419, and a member of the Over 50s Leisure Week Team will send you out a timetable,

Step 2: Find something you want to do, ring up again on 01209

313419 and book on, simple as that!

The whole Over 50s Leisure Team would like to pay special thanks to all the sports clubs and leisure providers who have delivered activity sessions in April and those who are going to take part in September.

*Wendy Randle, The LEAP project,
The Kernow Building, Wilson Way,
Pool, TR15 3QE*

A Thank you from "Miss Marple"

As I have now left the realms of the "Chain Gang", I wish to say a most sincere thank you to all the people of Hayle who supported and gave so much respect to Arthur and myself during our two years as Mayor



32 Riverside,
Angarrack,
Hayle,
Cornwall
TR27 5JD.

Telephone
01736 751718.
Mobile
0778 682 1116

JENNIFER JACKSON

QUALIFIED LEGAL ADVISOR

Sensibly priced Legal advice, in plain English. Home visits during office hours, evenings and weekends. Friendly and confidential service covering a wide range of Legal and Law related topics.



*Retiring mayor Marjorie Roberts and
our new mayor Mrs Terry Lello.*

and Consort of Hayle.

To the many Organisations I thank you for all that you contribute in our Community as I know that you all put in so many hours of voluntary work. You are all very valued and so important to our Town.

To my fellow Councillors, Town Clerk Eleanor and her Staff, I thank you for all your confidence, support and respect given to me.

I really enjoyed being your Mayor of Hayle and as we enter a very exciting stage of regeneration, I would ask that we all work together with ING to ensure that we get the best development to benefit the harbour and our lovely town of Hayle.

Councillor Marjorie Roberts

**1ST CHOICE
PAVING**
Specialists in
all aspects of Paving

Tel: Hayle (01736) 753087
Mobile: 07816 403 265

DRIVES, PATHS AND PATIOS.
COLOURS, DESIGNS AND MOTIFS
TO YOUR REQUIREMENTS.
DRAINAGE AND LANDSCAPING.



“ROADCRAFT” School of Motoring

Detailed and Patient
Tuition from Chris Miller
D.S.A., A.D.I., M.I.A.M
Learner, Pass Plus and
Advanced Driver Tuition

- *FREE STARTER PACKS
- *DVD VIDEO CD ROM LOAN
- *MOCK TEST PRE-TEST
- *INSTRUCTION FOR
NERVOUS DRIVERS
- *NIGHT DRIVING TUITION

0800 026 0293
01736 752800 (24hrs)

Staying safe on our roads for life.

of this lovely stock, small family businesses in Asia, “people that over the years have become our friends” and cutting out the middle men, she regards her trade as very fair and hopes that she can reflect realistic prices to her customers in Hayle. Many thanks to those who have already visited her colourful and friendly shop.

A Hayle girl for the past 23 years, Chrissie has done the local markets and car boot sales for a long time, so the cabin in Foundry was the ideal spot to have a permanent base for the business and she is loving it, making new friends and enjoying the location. So come down and see what Foundry has to offer you this summer.

BRIGHTENING UP FOUNDRY SQUARE

Some of you may have noticed “Chrissie’s Stall” with its bright summer colours and Balinese temple flags and brollies outside Pratt’s Market in Foundry Square. Selling a wide range of handmade products from Asia, Chrissie hopes she has something for everyone. From that last minute present or unusual gift through a wide range of summer clothing and beachwear, especially catering for every size, a really cute range of kids wear sun-hats and sandals, swimwear and sarongs to an extensive collection of beach and fashion jewellery.

In dealing directly with the creators



PLANTS ON THE TOWANS, No 8, HAWTHORN

In many parts of the country hawthorn is found in the hedgerows. But here on the Towans (and the Carns) individuals can spread their branches and take their natural shapes, influenced very much by the prevailing wind. One grows on a little grassy mound on Mexico Towans and is the site of a memorial for someone's father and grandfather who died in the last two wars in Europe; it is a special place.

Hawthorn - *Crataegus oxycantha* (or *C. Monogyna*) is in the rose family and can grow to 30 ft although 15' is about the biggest in these parts. It's one of the trees revered by our

ancestors and research in modern times has found it has considerable healing properties, especially regarding the heart and the circulatory system. A report in the British Medical Journal showed that the berries reduce high blood pressure caused by hardness of the arteries and kidney disease while the flowers significantly improved the health of patients suffering from "an ageing heart". The extraordinary feature of this plant is its ability both to lower high blood pressure and to restore low blood pressure to normal. It is also valuable in treating angina, irregular heart-beat, spasm of the arteries (e.g. Reynaud's disease) and insomnia of nervous origin. In China the berries are used to aid digestion and similarly



ALL AERIALS

TV / FM AERIALS & SATELLITE SPECIALISTS

**Members of the Confederation of Aerial Industries
ALL ASPECTS OF TV / FM AERIAL AND SATELLITE
WORK UNDERTAKEN**

**ALL WORK GUARANTEED * FULLY INSURED *
COMPETITIVE PRICES * PROMPT RELIABLE SERVICE
FOR FREE FRIENDLY ADVICE CALL JONATHAN**

01736 759225

**Mobile 07979503907 / Email jon@allaerials.co.uk
www.allaerials.co.uk**

in France they have a reputation for the treatment of diarrhoea and dyspepsia.

The flowers (smelling a bit like rotting meat to attract the flies that do the pollination) and young leaves yield an excellent tea. The flowers are harvested just after they open, the leaves when they are fully developed. Quickly dry what you have collected and store in containers that can be tightly closed.

The Hayle artist, Robert Jones, has done some wonderful oil paintings featuring the gnarly winter Hawthorn and Blackthorn – one with a couple of geese in long grass beneath the solitary tree is breathtaking.

Sorry to miss the last edition – I was in the desert near Moab, Utah.

Michael Locke

Plant Spirit Medicine Practitioner

OUR EARTH

*Shiny and blue
And pretty is our Earth
As it sits in its place
In our wondrous Universe
As it gives life and nurture
To the mighty elephant and the little mouse
And to ourselves, Humanity.*

*Let us be kind to our fellow creatures
Of Humanity and of the Beast.
Let us love our planet Earth
And look after it
That long may Man and Beast
Flourish upon
Our wonderful Earth.*

Margaret Scott



J C ELECTRICAL



Your complete 24hr Electrical Service

City & Guilds Qualified

Tests to 16th Edition BS7671

**Rewires, New Build, Lighting, Extra Sockets,
Showers, Heating**

Prompt Reliable Service

All Work Guaranteed

Free Estimates

Hayle 01736 754543

Mobile 07739 577 549



GOODBYE TO HAYLE HEALTHFOODS

Well after a fabulous four years during which I've met some of the loveliest people ever and had the satisfaction of building a busy little operation which has gone from strength to strength and hopefully served the community well I am having to leave these premises and at the time of writing there is nowhere else for the shop to go. For legal reasons I will not go into details at the moment, suffice to say there are a few nightmarish people in the world, presumably sent to remind us how nice the other 99.9% are, but perhaps we should spare them some sympathy because whilst we can move swiftly on they are stuck with themselves until/unless they decide to change!

Hopefully all the experience I have gained will not be wasted as I will be offering advice and help from home and delivering to the area weekly. All the things you have been accustomed to buying from the shop, plus just about anything else in the health line, can be ordered. In particular as I will be ordering specifically there will be a greater choice of sizes and brands so for things that you use regularly it may well be extremely beneficial in price terms to order in quantity. In addition to ensuring that my wonderful loyal customers can still be catered for if they wish to work this way, I hope the service will be of benefit to those without transport or who cannot carry things easily. Local

BARTON prini

for all your printing requirements
- 07799 411525 -

**General Printing
Letterheads
Business Cards
Compliment Slips
NCR Pads & Sets
Flyers & Leaflets**

1 Turnpike Road, Connor Downs
Hayle, TR27 5DT

entrepreneur Matt Trevaskis of Ecodrive has offered to use his electric delivery van on my behalf which will be very environmentally friendly, he also assures me that delivering is in any case more beneficial to the environment than everyone going out to the shops, so that is another plus point.

However it will not be like having a shop open in your High Street and I hope that it will not be long before someone else takes up the challenge to open a Healthfood Shop in Hayle. The business is assuredly there, from zero business my sales have risen to nearly £90,000 per annum and with all the publicity surrounding healthy eating on television it is becoming less and less of a niche market. If anyone is planning to do this I will be pleased to offer any assistance they may wish for.

R	ROY
H	HAYES
G	GLASS

For all your glazing requirements

Over 40 years experience

Rear of
Central Garage Hayle

Tel/fax: 01736 754023
Mobile: 07880 530 795

Pratt's Market

Units to let

Very competitive Rent

Contact Andrew
In BK Video, Pratt's
Market
Tel. 01736 755277

Meanwhile Miranda who is opening an organic clothes shop at 51 Penpol Terrace will be getting organic bread in weekly and will probably stock some delicious organic cakes and chocolates.

So thank you thank you everybody for your kindness and support over the years, if you would like to order from me my contact details are: phone 01209 842509, text 07817 183924, email felicityj.laws@virgin.net, website www.felicityhealth.co.uk.

May life bring you all that you wish for. Love and light to all.

Felicity

MUSIC HALL MEMORIES

Yorkie's article "Music Hall" in the June issue of Hayle Pump gave an account of the pleasure to be had of seeing, at the Palace Theatre, Halifax, many years ago, several of the greatest variety artistes of the day.

Amongst the comedians, one of the writer's favourites was MAX MILLER, known as "The Cheeky Chappie". When I read this, it reminded me of a treasured memory I have which readers may find interesting. As a teenager, I was in the habit of collecting autographs, and on this occasion I found myself standing alone at the rear of the Portsmouth Hippodrome, a lovely theatre, destroyed later in the Blitz. Max Miller was 'top of the bill'. I watched as he drove up and parked his car a few yards away. As he walked towards me, I was rather surprised to see him looking downright miserable. I didn't appreciate that even the greatest funny-man of the day could not look happy all the time. After signing my

book he said "Do you live round here?" I told him I did and he said "Give your name and address in to the stage-door and I'll send you a Christmas card", - and he did for two years running. One of the cards, I remember, showed a dog cocking its leg up against a lamppost. The caption read "To you, I hope, I may be guessing, the post will bring a shower of blessings".

I am indebted to "Yorkie" for suggesting that this backward glance may evoke happy memories for other Pump readers. It certainly did for me.

*Gordon Chapman,
Trelissick Fields*

(Ed. Note. I too was intrigued by the article, because the day before it arrived a friend of mine, also of a

certain age, and I were reminiscing about the music hall, and we were unable to remember the name of the large gentleman who played the xylophone. (I believe his grand finale was always, incongruously enough 'Holiday for Strings' played at an impossibly fast tempo.) I opened Yorkie's article and lo and behold there it was - Teddie Brown!)

TREVE DYER
Accountant

9 Dowren House
Foundry Lane
Hayle
TR27 4HD
tel: 01736 758333
fax: 01736 758303
www.trevedyer.com
e.mail: info@trevedyer.com

PHILP'S
FAMOUS PASTIES

EST



1958

BAKING 7 DAYS A WEEK
FOR THE **GREAT TASTE OF**
CORNWALL'S
PREMIER PASTY MAKERS
WITH OVER 40 YEARS
EXPERIENCE
VISIT US NOW
AT OUR SHOPS AT-



**1, EAST QUAY,
HAYLE**
01736 - 755661



**1, FOUNDRY HILL,
HAYLE**
01736 - 753302



**MARKET PLACE,
MARAZION**
01736 - 710332



**THE SQUARE,
PRAZE & BEEBLE**
01209 - 831360

Letters.....

Letter

Regarding Hayle Christmas Lights, I was cheered to read Richard Horwell's spirited riposte to my letter and I applaud his passion. Unfortunately, in his headlong rush to put pen to paper he entirely missed my point, which was not to disparage the aims of his committee but rather to express the wish that they would go about their work with discerning restraint instead of obtrusive excess. Furthermore, in his righteous indignation he appears unable to differentiate between rudeness, and constructive criticism with which he clearly does not agree.

I am therefore pleased to note that the committee acknowledge that I might after all have a point – implied in the admission that “a more appropriate set piece” is to be put in place. Hopefully they will resist the temptation to illuminate the swan and cygnet in gaudy fluorescent primary colours and realise that simple white light is better suited to the quiet dignity of the millpond. [Take a look at Penzance promenade.] Such garish tawdriness may go down a storm in certain other nearby bastions of vulgarity but is entirely inappropriate to the cultivated and refined ambiance of the Foundry area.

I note that my views on what constitutes good taste may be shared by Santa's reindeer who – no sooner had

their beaming buffoon of a master disappeared down a chimney in Commercial Road – bunked it back to Lapland, rather than suffer further embarrassment at being seen out with the wretched man. He may be seen, still haplessly marooned above the opticians, grinning with oafish self-consciousness.

My limited resources prevent me from financing the swan and cygnet in full, but to demonstrate that there is no ill will, on my part at least, I enclose a modest donation to the Decorative Lighting Committee – with a request that you kindly forward it, as no address for Mr. Horwell was printed. Yours playfully,

*A L Venning,
34 Millpond Avenue,
Hayle TR27 4HX.*

Letter

One of the joys of reading the Pump used to be the excellent cartoons. These have ceased to appear in recent times – I do hope nothing serious has happened to such a talented cartoonist.

***Name and Address supplied* (Ed. note: For reasons which he did not disclose, Chas made the decision a few months ago that he no longer wanted his cartoons to appear in the Pump. We regret this as much as our readers, and nothing would please us more than for Chas to change his mind.)**

Letter

“Where are you? Let's be having you” was the war cry of a Director

of Norwich Football club to the supporters, to get behind the club players to stay in the Premier League.

Let's be having our roads and foot-paths clear of undergrowth. The walk-ways down from Dracaena Avenue and Crescent are overgrown. On "Prospect" at one part, no pavement, just bushes growing out of the wall, presenting danger to children walking to school.

Not everyone has the luxury of a car to get around in, so how about those responsible taking a walk around the town. See for yourselves what needs doing. Best time six o'clock Sunday morning!

We could do with a detailed map of Hayle (roads) on sale at the Library, some road signs are missing, or unreadable.

Nice new road surfaces, Jet Garage to Lidl, but try walking on the pavement; no good just picking up litter if the undergrowth is taking over.

The chairman of Maidenhead Town Council took a phone call from one of his constituents, complaining of broken glass on a certain road. Into the boot of his car he loaded brush, shovel and bucket, went to that road and swept it up, on a Sunday. Not on just one occasion either.

Mr. B. R. Davidson
34 Dracaena Crescent
Hayle TR27 4EN

Letter

I have been coming to Cornwall on and off for the past 25 years.

We nearly always stay in the chalets or the hotel, which is no more, at Hayle Towans. Each time we have been, we have parked in the car park near the church and have gone for a long walk up the river Hayle, and the first time we went we saw kingfishers, signs of otters, other wildlife and plenty of fish.

My family and I went for a walk along the river recently for a good 2 hours. We saw a few fish in the river and 4 baby moorhens but were absolutely shocked as we came across nearly 20 dogs which were all being allowed to jump into the river. As a result, the banks of the river are caving in from the dogs climbing out. Even worse, dog mess is everywhere, by the end of the walk our shoes were covered in it as it's not easy to look for wildlife and dog mess at the same time. At the bridge there was actually a dog mess bin, but I very much doubt it is ever used.

Another evening we decided to walk along the cliffs past Gwithian. Again, the path was covered in dog mess. Doesn't anyone actually clear up after their dog?

But the best part of the evening (and please excuse the sarcasm) was when we got back to the car and saw an elderly man throw his (we assume granddaughter's) soiled nappy over the cliff. He deserved far more than the glare I gave him, that's for sure.

We used to suffer from this kind of thing in our local children's playing field (except for the flying nappies)

but being a member of our Parish Council I shout at dog owners to clear up after their dogs. Maybe this is what is required in your area or at least you could print parts of this letter in the Hayle Pump, so dog owners sit up and take notice that they are ruining the environment for other people and the local wildlife.

I hope something good comes from this so that I, and many others can enjoy the otherwise pleasant walks around Cornwall once again.

Sylvia Gibbins



This newsletter has been assisted by a grant from the Neighbourhood Renewal Unit.

Letter

I would like to thank all those kind people who sent me recipes for Pumpkin Pie. It now remains for me to grow them, to try the pies.

Yours sincerely

*Charlie Dormer
Hayle, TR27 4EH*

HAYLE RESIDENTS ASSOCIATION

Hawkins Motors Hayle

At the public meeting on July 19th it was resolved by a majority decision of 69 for, 0 against, with 6 abstaining, that acting under the Local Government Act 1972 we request the District Council to hold a local referendum.

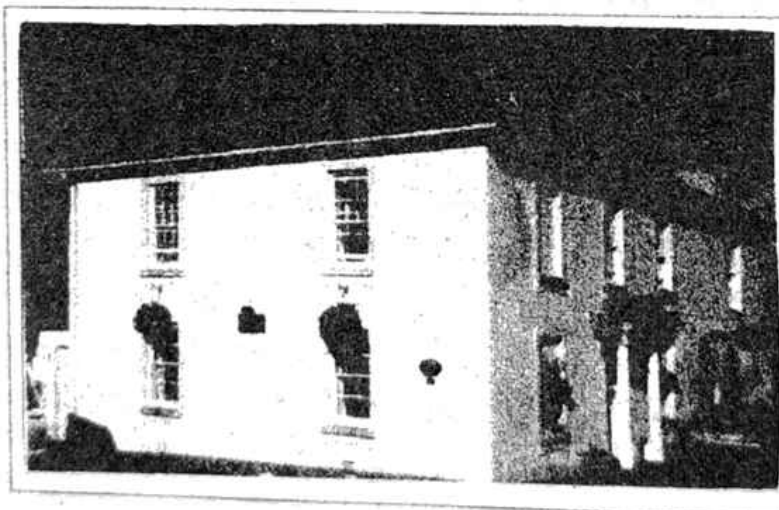
CRANFORD HOUSE BED & BREAKFAST

OPEN ALL YEAR—CHILDREN WELCOME

**ALL ROOMS
EN-SUITE**

**NON
SMOKING**

**OFF ROAD
PARKING**



LUXURY

HOLIDAY

APARTMENT

TO LET

PETER & PEGGY DARLOW

01736 752618

Foundry Hill * Hayle * Cornwall * TR27 4HW
cranford-guesthouse@talkgas.net

Question: Do you agree that Penwith District Council should take immediate steps to bring the old Hawkins Motors site in Hayle into public ownership for amenity use?

At the meeting were four members of the M.C.T.I. (Revitalise! Hayle Coast and Country) steering committee, they allowed the reading of their letter to Jim McKenna of July 11th 2005 which parallels the meeting's decision.

Seldom has a planning application created so much opposition in Hayle. Why? Well there are several facets to this application; social housing, residents' demands, costs, to name but three. What are the implications? Most residents (all that were present at the meeting) would like to see Copperhouse Pool eventually used as a public amenity – regattas, teaching youngsters to sail or row for example or just as a place to sit and relax. This would not be enhanced by a four-storey block of flats right on the edge of the pool!

The Residents Association and the meeting in general were not and are not opposed to affordable housing, and let's face it there would only be seven in this development if it is built, they are against any residential development on this site.

As to costs, P.D.C. receive hundreds of thousands of pounds for reaching their targets on social housing; they have passed planning consent for over a hundred affordable homes in Hayle since 2000 and we



It's time to wake up!

**53% of companies in the South West do not have a website!
39% do not even have email!**

Are you one of them?

More and more people are making the Internet their first choice when searching for products and services, both locally and nationally.

But if you aren't on it, you can't be found.

Grandmore offers a fixed price solution to getting your business online. No hidden charges, No limitations, No fuss.

Get the Website that suits YOUR needs. As many email addresses as YOU want. With NO LIMIT on bandwidth, A fully featured content management system and FREE hosting for a year (worth £200).

- Fixed Prices
- No web page limits
- No email address limits
- No bandwidth Limits
- Content management system

For the low price of £999.

Call us **Free** on 0800 066 4366
or email info@grandmore.com

 **Grandmore**
www.grandmore.com

have over 500 houses under the control of Penwith Housing Association, this represents over 10% of our houses are either affordable or rented and when the harbour is finished there will be over 200 more!

Back to costs, surely P.D.C. can afford to spend some of the cash Hayle has earned them on a facility for the town, can't they? When the referendum is being held (very soon) please come and vote, whichever way you feel, as it will be your chance to have your voice heard by the district councillors you continually moan about as not really caring what Hayle needs or wants. I know it is not a sports centre but it is a start and would help us develop a facility no other town in Cornwall has, a fantastic inland wa-

terway for safe water sports for all ages!

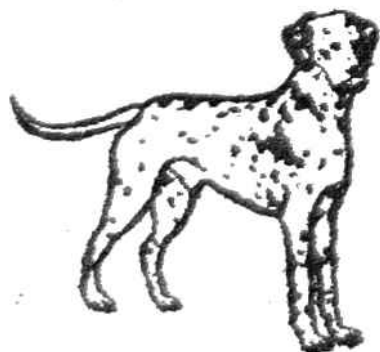
At the same meeting, Loggans Mill and the possibility of a junction on the A30 (Half Bypass) at Tolroy were also discussed.

As for the Mill, the Residents Association had tried over the past two years to get P.D.C. to renovate it for use by the town as a recreational/leisure facility and immediately our ideas were put before the planning department, P.D.C. brought out their great plan to surround it with blocks of houses! BUT there is still the chance that one of the last vestiges of Hayle's heritage could be saved, renovated and possibly used as a theatre/meeting room for over 200 people, Tourist Information Centre (instead of

DYLAN'S CAFÉ

6-7 Foundry Square, Hayle, Cornwall

Tel. 754809



All Day Breakfast
Fresh Cooked Lunches
Cream Teas
Vegetarian Menu
Children's Menu

Proprietors Alan & Rosemary Cummings

the Library) and the company developing Marsh Lane have promised well over £100,000 towards this project if we want it. Add to this the £300,000 P.D.C. received from Lidl and there is more than enough funding to carry out a feasibility study as to what can or should be done with the building which stands at our front door.

It is generally accepted by most people that there should have been a junction off the A30 at Tolroy when the town was nearly by-passed. As we are all painfully aware, traffic destined for Helston and the Lizard is directed through Hayle and lorries to and from the packing station grind through several times an hour day and night, and this is going to triple when the packing station extension is complete. We support Hayle Town Council in their efforts to get a roundabout built so as to relieve the problem and make life more bearable by reducing non essential, non Hayle bound traffic. This will also enable emergency vehicles better access to the Foundry end of town, possibly saving a life or two.

If you have any comments, please send them to:-

Hayle Residents Association
The Caravan, Bodriggy Crescent,
Hayle, Cornwall, TR27 4NN.

Or better still join us and help to fight for a better Hayle.

Harry Blakeley – Chairman, Hayle Residents Association.

NEIL WADE
MOTOR ENGINEER
CENTRAL GARAGE
10A HAYLE TERRACE
HAYLE

M.O.T. TESTING STATION
DIESELS & CATALYSTS
TESTED*
SERVICING*REPAIRS*
WHEEL BALANCING*
EXHAUSTS*TRACKING*
TYRES*BATTERIES

HOME: 01209 610651
MOBILE: 07990 981546
WORK: 01736 756512



NOT HAPPY TO RIDE A BIKE ON THE ROAD?

Feel the need for confidence and to gain skill?

TRAINING FROM 10 YEARS OLD TO 82 (SO FAR)

FROM NON-RIDER UP TO STAGE 3
One to one tuition by CTC approved instructor in your local area

Also maintenance and breakdown instruction

INTERESTED? Contact
Dave Cuffwright 01209 890156

Mob: 07791 748542
cuffy@tesco.net

QUIZ - HIDDEN TREES

Find the trees that are hidden in the following sentences:-

1. Hoop-la never was the most popular game at the fair.
2. Many of the World's opal mines are found in Western Australia
3. 'Grandma, please can I have some more toffee?'
4. The most popular Christmas cards have robins on them.
5. Oh come ye wise, scholarly people, you must get this one.
6. In the heat haze, lots of things become indistinct.
7. The sparrow, and others of its kind, regularly eat the peanuts.
8. An ape, a chimpanzee, and a monkey can all climb trees.

9. 'I want something nice and cheap please.' She said.

10. Feel my pulse - am I still alive?

11. Has the printing ink got all over your hands?

12. He paced around in ever decreasing circles.

13. Let's take the Somerset holiday, I fancy pressing cider apples.

14. Watch out! A horrible monster lives in this tree.

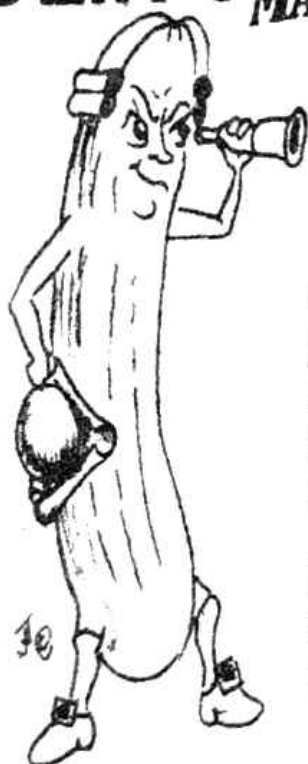
15. Most people like this tree. It has a certain something.

The first correct answer out of the Pump hat on 20th September wins a £20.00 voucher to be spent with any of our advertisers.

Submitted by Cleverclogs

COLIN'S MARKET GARDEN DICTIONARY

OFF FOUNDRY SQUARE



CUCUMBER

(keu:kumba)

NAMED IN HONOUR OF THE FAMOUS NAVIGATOR CAPTAIN CUCKE WHO DISCOVERED A MIGHTY RIVER BETWEEN THE SETTLEMENTS OF HULL AND IMMINGHAM AND EVEN MADE FRIENDS WITH THE STRANGE NATIVES OF "GOOLE".

IN CELEBRATION OF THIS ENGLAND DEVELOPED A SALAD VEGETABLE, THE "CUCKE-HUMBER" BUT NOW KNOWN AS THE .. CUCUMBER

SOURCE: JEREMY (Darwin) JOSLIN'S WORK "ORIGIN OF THE VEGETABLE SPECIES"



Last quiz winner

Last month's quiz was to find the names of birds. We had a big response again, and the first correct answer out of the Pump hat was Linda King, from Wheal Alfred Rd. A worthy winner, as Linda has entered many of our previous quizzes. She wins the £20.00 voucher.

Answers to quiz in issue 64

- | | |
|-------------------|----------------|
| 1. stoat | 7. camel |
| 2. weasel | 8. bear |
| 3. okapi (or pig) | 9. ape & chimp |
| 4. eland | 10. gnu |
| 5. rabbit | 11. hare |
| 6. rat | 12. ass |

OIL PAINTING LESSONS



01736 758272

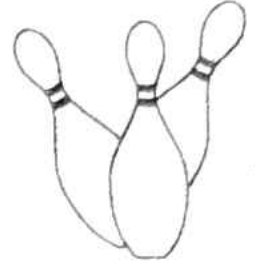
£7 PER LESSON

THE VIEW FROM THE STEEPLE

It is a slightly different view that I am looking out on at the moment because St Elwyns is surrounded by scaffolding. I am wearing ear plugs and a tin hat but one must not grumble. We have waited a long time to get this work done and no one really knew just how bad the roof was until the slates came off and the full horrors were finally revealed.

Nevertheless the church is still

Country Skittles ...



...welcomes Pump readers of all ages.

4 traditional 9-pin skittle lanes

Restaurant & snack menu available at all times

Roast lunches served all day on Sundays

Fully licensed bar

Target shooting gallery

Crazy golf

Pool Table football

Air hockey Batak

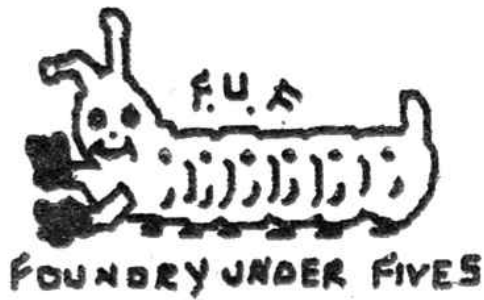
Lots of traditional board games & many other games to play.

We cater for groups large and small, and provide an ideal venue for family get-togethers, birthday parties and works outings.

To get to us, take the B3302 out of Hayle towards Helston and turn right when you see our sign just past St Erth Praze. We are about half a mile up that road.

Booking in advance is advisable at busy times.

For further information ring us on 01736 850209



FOUNDRY UNDER FIVES
 PRE-SCHOOL
 HARBOUR VIEW
 HAYLE TR27 4LB
 TEL: 01736 755511

PLACES AVAILABLE FROM
 SEPTEMBER 2005
 FULL FUNDING FOR
 3 AND 4 YEAR OLDS

TODDLER SESSIONS ALSO
 AVAILABLE

functioning as normally as possible in spite of floor to ceiling scaffolding around the high altar. The round Rawlings window has been removed and is being re-set in the stained glass workshops at Salisbury Cathedral.

We did manage to squeeze in a few events before the builders moved in. Our second art exhibition entitled "A Longer Look" took place at the end of May and the Marazion Apollo Choir gave our concert season a very rousing finale. They are always very welcome visitors to St Elwyns as is their featured guest singer, Valerie Wallis, who was making her third appearance with us.

Jim Whitlock bravely staged his 5th solo exhibition "In All Seasons" despite the roof being removed above

him. Jim is an old friend of St Elwyns and this was one of his best collections of paintings attracting many visitors.

During his exhibition we also had our 5th annual performance by the Kenwyn Barton Gilbert and Sullivan singers. This year's production was "The Gondoliers", an hilarious tale of a lost king, star-crossed lovers and two gondoliers each suspecting one another of being someone else. All in all a great evening's entertainment.

I will let you know next time how we manage with the Summer Art Show, and the Civic Service. It should be fun!

In the meantime, my lady wife and I are taking a short holiday from the dust and the noise with my cousins at Phillack. See you all again soon.

The Sanctuary Sparrow

A SLIP OF THE TONGUE

My Aunt Lavinia had a unique way with words, and here are just a few of her expressions that have stayed in my mind.

On a blustery day she would remark that the wind was debating.

She rang a friend from the telephone chaos.

Received flowers from Antiflora.

Said a cousin was going through a funny phrase.

*Threw away a bag of flour as it was full of weasels.
Had a special licence wedding when her fiancé was on embrocation leave.
She said that when she was young she attended electrocution lessons.*

Apart from this peculiarity my aunt was a bright, intelligent person, and was adored by the family.

YORKIE

KRIS GAYLE SEPTEMBER GIG

Hayle jazz diva Kris Gayle makes a return visit to St Ives Jazz Club on Tuesday 6th September, accom-



pained as usual by the outstanding Hayle jazz pianist Viv Rodd and his trio. The club sessions are held at 8.30pm every Tuesday at the Western Hotel St Ives, featuring visiting London stars and also the very best of the local jazz talent. Kris last appeared at the club in March and attracted a full house, so be early!

Badger Carcase Collection

If you see a dead badger on the road, please ring defra on
0800 389 7395

David Moyse Clothing

**Your
local
shop for**



**men's, women's &
children's clothing**

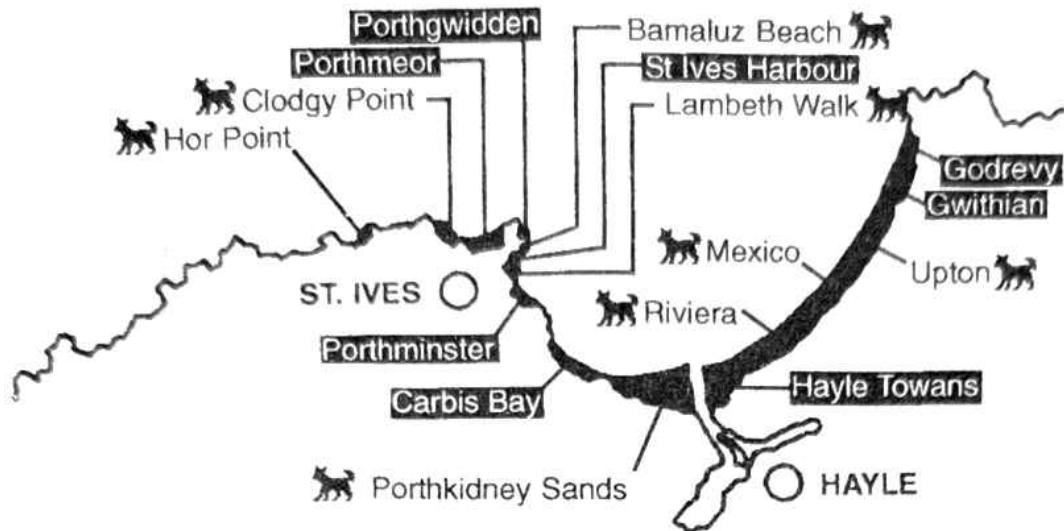
Call us now



01736 752053

**38 FORE STREET,
COPPERHOUSE
HAYLE**

**Summer
Clothing
&
Beachwear
for all
the
Family
now in
Stock.**



Beach Guide for Dog Owners



DOGS ARE ALLOWED ON THESE BEACHES

Hayle : Riviera, Mexico, Upton
Towans
St. Ives : Hor Point, Clodgy Point,
Bamaluz Beach, Lambeth Walk,
Porthkidney Sands.

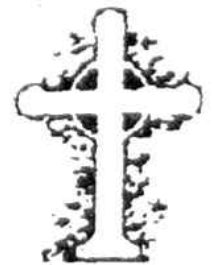
DOGS ARE NOT ALLOWED ON THESE BEACHES

Hayle Towans (from Hayle River to
Black Cliffs)
Godrevy (to Red River)
Gwithian (Red River to Ceres Rock)
Carbis Bay
St. Ives : Porthmeor, Porthgwidden,
Harbour, Porthminster



W. J. WINN

FUNERAL & CREMATION DIRECTORS
PRIVATE CHAPELS OF REST
24 HOUR SERVICE



69, FORE STREET
HAYLE
01736 752124

&

TRENWITH TCE
ST. IVES
01736 793029



RSPB NEWS

In spite of the decoy terns placed on the islands at Ryan's Field by St Erth schoolchildren, the real terns gave us a miss this year. However, our pair of oystercatchers there did succeed in raising 4 chicks to fledgling, three more than last year.

It's that quiet time of the year again here with most of our migrant water-birds still away nesting in the Arctic. Shelduck are the only estuarine species which breed at Hayle and recently we've seen a brood of fourteen ducklings at Lelant Water. After much negotiating with the various watersport users, we've agreed on a zoned area at Lelant where, hopefully, both birds and watercraft can live side by side. Part of the estuary is now marked off (with poles and signs) for the local clubs whilst the western sector is a boat-free zone to allow the birds to feed and roost undisturbed. I see this very much as a win-win situation but we must all work together to make it work. Good birding!

Dave Flumm, RSPB Cornwall Reserves, Hayle Estuary and Marazion Marsh. Tel./Fax 01736 711682. david.flumm@rspb.org.uk. <http://www.rspb.org.uk>.

"Do you like Kipling?"

"I don't know, I've never kippled."



Mrs Terry Lello
County Councillor

If you need any assistance with matters relating to County, District or Town Council I would be pleased to help and can be contacted at:-

Telephone: 01736 757507

Mobile: 07890 192587

email: tlello@cornwall.gov.uk

ALAN ORCHARD & SONS

· APPRENTICESHIP SERVED



PROFESSIONAL TRADESMEN

CARPENTRY & JOINERY

UPVC FASCIAS

ROOFING

BUILDING & MAINTENANCE

01736 756687

07787 148571

**27 GUILDFORD ROAD
HAYLE TR27 4PP**

SOAPBOX SERMON

Now that I have been officially put out to pasture and expected to enjoy my sunset years in peace and tranquillity, I can, perhaps, commit a few well-chosen words to paper. It may be that, from time to time, some of the sentiments expressed would have been considered a little too controversial, or dare I say it, political to have been delivered from my pulpit on a Sunday morning, although I am sure that on some occasions the same texts could have been applied.

For example that well-known parable of building houses on sure foundations (St Luke Chapter 6, Verses 47-49) brings to mind the vagaries of local planning. Certain proposed de-

velopments have raised public indignation to 9.9 on the Richter scale and when it comes to gaining trust and approbation Penwith scores "Nil points" far too often.

For years we have struggled to get a decent standard of local development and just as it seems that we might have made some modest progress, in go the applications for Foundry Lane and Hawkins Motors. All those knowing of a just impediment why these applications should not be approved should declare it to your Council as soon as possible.

Not only are these two unfortunate edifices too overpowering for their respective sites, they are following a disturbing new 'trend' of facing new buildings with wooden cladding

Tel 01736

TREVASSACK Mob

752119

NURSERIES 0773 073 3263

GARDEN CENTRE

HIGHLANES HAYLE.

OPEN 10.30/1.00pm-2.00/5.00pm

LARGE SELECTION OF PLANTS FOR BEDDING, TUBS AND HANGING BASKETS, INCLUDING FUCHSIAS, SURFINAS, OSTEO, PELARGONIUM ETC. SPECIAL OFFERS ON GLAZED POTS & CONTAINERS, SEED TRAYS, PLASTIC TUBS & BASKETS, WIRE BASKETS, COMPOST, GROW BAGS. READY PLANTED BASKETS & TUBS. BAMBOO WINDBREAKS, STONE ORNAMENTS ETC. VARIOUS SHRUBS IN CONTAINERS. WOODEN TROUGHES, LOG EDGING ROLLS.

Top of Highlanes near the football club

where none has existed before, making them stand out like the proverbial short-sighted carpenter's thumb!

Please Penwith have pity on us. There must be someone in your Planning Department who is blessed with just a little good taste and pride of place. Ah yes, I hear you say, that's as may be for the likes of Penzance and St Ives, but it's par for the course in Hayle!

That, dear people, should no longer have to be accepted as a valid excuse for bad planning practices, no matter where you live. It is, after all, our children and grandchildren who must live with our mistakes!

*Rt. Rev'd Dr Henry Herring-Gull,
Bishop of Godrevy Island (Retired)*

Hayle Decorative Lighting News

I hope you are all getting ready for our Raft Race, now that Newlyn has cancelled theirs everyone can come to Hayle and have a great time here. The date is August 21st and there are plenty of stalls booked - still room for a couple more though.

Another of our fund raisers is the Sponsored Bike Ride, taking place this year on September 18th, sponsorship forms are available from Mike Matthews at Matthews & Co. Estate Agents or from myself.

Before the bike ride there will be another of our excellent quiz nights, with questions set by David Jones. It's always a fun night, why not make

Des Button

Springfield

33 Clifton Terrace

HAYLE TR27 4BP

01736 753211

0778 868 2076

ELECTRICAL
SERVICES &
SUPPLIES

Part P
Registered



up a team of between 4 to 6 people and come and join in, it's only £2 a player? There are some great raffle prizes too. Make a note of the date – **August 26th 7.30pm for 8.00pm.**

All too soon it will be time for my trusty team and myself to start putting the lights up again as there is such a lot to do and such a little group of volunteers to do it all. New members always welcome.

Dick Horwell 01736 752597

HAYLE LIBRARY NEWS

Well it's been a busy start to the summer and it looks set to continue with a number of events happening at the Library.

The 'Summer Reading Challenge' has begun and we welcome anyone between the ages of 4 – 16 to take

SINGER & PFAFF SEWING CENTRE

Mr & Mrs D.M. Girling

*Authorised Singer Service
Centre for Cornwall*

ALL MAKES SERVICED

**11 JOHN STREET
TRURO
01872 225168**

New & reconditioned machines
always available.

part. Just pop in and we will issue you with your starting kit.

Heylfest events (all at 10am) are:

- 1st August Story time with Cathy
- 2nd August Paradise Park
- 4th August Sure Start Family Day
- 5th August Coz the Clown

The start of August means the beginning of our special offers. Two for the price of one on all videos, dvds, cds, x-box, Playstation games and talking books.

A reminder that Storytime continues throughout the summer holidays, starting at 3.30pm. Join in the fun with Libby and Sally.

The Reader's Circle and Poetry Groups meet once a month, pop in for more information if you would like to join.

Damian has now set up home in the library as the Tourist Information

Officer, with all the local dates and events going on in Hayle and Cornwall.

Thank you to all our customers for supporting the library. Have a good summer.

The Library Staff

Cornwall County Fire Brigade

Our local Fire Brigade works hard to make Cornwall the safest place in which to Live, Work and Visit. Find out how they will achieve this by asking for a free copy of the IRMP Service plan for 2005/6: Phone 01872 323771 or e-mail enquiries@fire.cornwall.gov.uk Visit the website at www.cornwall.gov.uk for further information on how to make your home or office safer.

Cornwall Guild of Weavers Spinners and Dyers

The Cornwall Guild of Weavers Spinners and Dyers has been holding some exciting events recently. This year there have been different speakers and themes such as Anne Satow who brightened up a grey day and showed slides and spoke on colour in design, Geraldine Jones who demonstrated basketry techniques and showed us different baskets from around the world; John Goodchild showed us some hooked and prodded rugs and Veronica Johnston took us

on some textile trails in Nepal. There was lively interest and curiosity shown which was apparent by the many questions and answers and general hum of conversation.

In September we are lucky to have the Curator from Bath Museum of Costume come to talk to us. In October Pat Johns will be coming to give us a presentation about weaving and exhibiting at West Dean. Admission is £2 and it is suggested that you come along at 1.45 for 2 p.m. in order to get your seat! Perhaps you would like to join us earlier and if so, may I suggest that a packed lunch would be a good idea. There are tea and coffee facilities and we meet at Tresillian Village Hall near Truro. There is ample parking and in fine

weather people, picnics and spinning wheels will be seen to be strewn about the grounds. We hope to see you there on September 16 or on October 28. If you have any questions please do not hesitate to contact the secretary on 01209 712067.

(There will be an outing to the St Ives Museum in early October so please contact us if you would like to join us.)

Jinty Knowling Lentier

Craft and Collectable Fairs

Balloons and prayer flags have recently adorned the railings of Phillack Church Hall on Friday mornings and you may also have

MURTS TELEVISION 32 PENPOL TERRACE

01736

REPAIRS

752269

RENTALS

SALES

**BARGAIN-SECOND HAND 20/21"
TELEVISION FROM £50.00**

**AGENTS FOR ROBERTS RADIO
RADIO/CD PLAYERS - CLOCK RADIO
BEFORE YOU BUY GIVE US A TRY**

Strawberry Blondes

Hair & Beauty Salon
Hayle 01736/756994
OFFERING

Spray Tanning
Nail & Hair Extensions
Pedicures & Manicures
Waxing
Facials & Make up
Non Surgical Facial Lifting
Massage
Inch Losing Body Wraps
Eye Lash Tinting & Perming

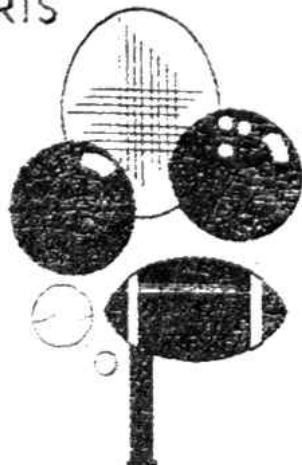
Cuts, Blow Dries, Sets, Perms, & all
the latest colours & techniques
Permanently straightened hair

COMING SOON A LUXURY NEW
SPA
AREA FOR ALL TO ENJOY....

ANGOVE SPORTS

COPPERHOUSE, HAYLE
01736 - 752238

FOR ALL SPORTS
EQUIPMENT
CLOTHING &
FISHING
TACKLE
*
RACKETS
REPAIRED
& RESTRUNG



noticed, on your way through Hayle, signs saying "Craft and Collectable Fair Today" and lots of arrows.

Fascinating items like a diving helmet or a French Horn can be seen on the forecourt, weather permitting, and a sequined bikini under a guard's uniform, almost precipitated an accident last Friday!

If you haven't been to check out what's on offer, perhaps this article will tempt you.

A group of local craftspeople and sellers of objects d'art, antiquarian items and bric-a-brac have been successfully selling books, cards, carvings, CDs, retro clothes, china and ornaments, Cornish crafts, prints, maps, glassware and mirrors, textiles, handmade knitwear, homemade cakes, model vehicles, pyrography, stamps, postcards, wood turning, jewellery, Tibetan Singing Bowls, prayer wheels, flags and other Tibetan items, games and puzzles, photos, paintings and lots more.

The Fairs are open between 10.0am and 3.0pm most Fridays at Phillack Church Hall. **Admission Free.** Dates for forthcoming fairs are:-
August 12 & 19
September 2, 9, 23, 30
October 28
December 16. If the Fairs carry on being successful, more dates during October will be booked.
Please contact Gill or Graham: 01736 350724 or 07974 000747



Continued from last issue.

Charles Thomas Eustace

Decoration, motif and form
 Among Charles Eustace's own designs are his interpretation of a rose bloom motif and a woman in a crinoline dress on a garden terrace, a popular image in the 1930s and taken from the family's embroidered fir screen. He did his own version of fishing luggers, lighthouses and sea-gulls. A bird of paradise design is believed to be taken from a book of engravings. His 'pilchard' letter opener is also thought to be his own idea. Two local views he used on trays are of a Cornish tin mine and St. Michael's Mount. These two designs were first produced in the late 1930s and have a primitive element to the drawing. Charles Eustace probably did not know of the work of Alfred Wallis, but it could be claimed that he belonged to a similar folk art tradition.

Charles Eustace's decorative work does have a simplicity in the drawing that makes it distinctive and this is often the key to identifying it. His way

**JOLLY BODGER
WAREHOUSE**

77 FORE ST
HAYLE
01736 752091



WE STOCK:
**BLACKFRIARS
 PAINTS &
 PRODUCTS.**
FLO GAS
CAMPING GAZ.
HARDWARE,
GIFTS & SOUVENIRS
AND MUCH MUCH MORE!
HOUSE & CAR KEYS CUT

of drawing lighthouses and fishing luggers is distinctly his own. His own original motifs such as his roses, do not appear to have been used by other copper workers. Once studied, his use of decorative punches can also help attribute a piece as his work. Articles such as coal boxes and sewing boxes were of wooden construction with copper cladding. He also made two tiered, copper topped occasional tables from apple box wood obtained from the local green-grocer. The edges and rims of his work can be plain or wired and turned. He also used crimped, serrated and curled edge techniques to decorate rims. The objects he made, their form and method of construction can be distinctive and peculiar to his work but cannot be relied on alone to



Family Law Specialists

Divorce & Separation
Financial & Property Disputes
Children
Domestic Violence Injunctions

*For a FREE initial
interview*

Call Antony Vingoe on
01736 752424

Solicitors Family Law Assoc. Accredited Specialist
Law Society Family Panel Member



O'DELL SIGNS

OF ALL TYPES
Signwriting, Perspex
Plastic, Engraved,
Magnetic, Posters,
Illuminated signs,
COMPUTER CUT
VINYL LETTERING
for Vehicles & Signs

Embroidery
for
Businesses & Clubs

HAYLE 01736 753656

1, Turnpike Road, Conno. Downs.

identify his work. As this was influenced by the designs and techniques of past copper making in Hayle, it often has a similarity to and can be confused with earlier examples of Hayle copper.

Charles Eustace died on May 21st 1957 at the age of 81.

*Submitted by M. Reynolds, with
Mr Eustace's daughter Nora.*

A DIFFERENT DRUMMER

Why should we be in such
desperate haste to succeed.
And in such desperate
enterprises.

If a man does not keep pace
with his companions, perhaps
it is because he hears a
different drummer.

Let him step to the music which he
hears, however measured or far
away.

Henry David Thoreau

ALCOHOLICS ANONYMOUS – AN APOLOGY

We received a complaint about the cartoon featured in Hayle Pump, issue 64. We would like to make it clear that this was in no way intended to belittle the excellent work of Alcoholics Anonymous, and we unreservedly apologise for any offence we may unwittingly have caused.

Goudie Charles – Editor

INDEX OF ADVERTISERS

All Aerials...15
 Angove Sports...36*
 Barton Print...17
 Biggleston's...40*
 Brookvale...11
 Button, Des...33
 Colin's M'ket Garden...26*
 Cornish Meadows...7
 Country Skittles...27
 Cranford House B & B...22
 Cycle Lessons...25
 Dyer, Treve (accountant)..19
 Dylan's Café...24 *
 Farm Shop...4*
 Fernleigh B & B...8
 Footsteps...7*

F.U.F. Pre-school...28
 Goldstephen Nursery...5
 Grandmore Website...23
 Hayes, Roy...18
 Hayle Holistic Clinic...39*
 Head to Tail...5
 House Exchange...3
 J C Electrical...16
 Jackson, J...12
 Jolly Bodger...37*
 Lello, Terry...31
 Mad Hatter...10*
 Moyse, David...29 *
 Murt's TV...35*
 O'Dell Signs...38*

Orchard, Alan...31
 Painting Lessons...27
 Pass Motoring...3
 Paving...13
 Philp's Pasties...19
 Reiki...7
 Roadcraft...14
 Safeclean...6
 Singer & Pfaff...34
 Smithy's Tool Hire...40
 Strawberry Blondes...36*
 Thurstan Hosking...11 & 38
 Trevassack Nurseries...32 *
 Wade, Neil...25
 Westone...9
 Winn, W.J...30

*You can pick up a copy of the Pump at those advertisers marked with a * also at Hayle Library, Day Care Centre, Community Centre, Bodriggy Health Centre, Copperhouse P.O., Forbuoys, St. Erth P.O., Connor Downs P.O., and many other places in Hayle.*



Hayle Holistic Beauty Clinic

FOR INDIVIDUALISED BEAUTY AND
 SPECIALISED COSMETIC TREATMENT BY
 AWARD WINNING "RAMA"

All beauty treatments by award winning therapist.
 Specialised cosmetic treatments.
 Collagen, Botox Injections, Thread Vein treatments.
 Gift Vouchers . Free Consultation.
 Special rates for Senior Citizens & School Children.

01736
 755656

BIGGLESTONS

TRADING IN HAYLE FOR OVER 100 YEARS

**Please try us first for the best of Hardware,
Ironmongery, Kitchenware, Paraffin
and Garden Supplies.**

01736 752219

*Summer, Autumn, Winter, Spring
We can supply 'most everything*

PLEASE SUPPORT LOCAL TRADERS

SMITHY'S TOOL HIRE & SALES

Hire tools for trade & DIY

Unit N, St Erth Industrial Estate

*Your local independent tool hire shop offering you the best
in hire rates, backed up by a service second to none.*

*Mini-Digger

*Mixers

*Compactors

*Trestles

*Shredders

*Power Barrow

*Breakers

*Stihl Saws

*Acrow Props

*Alloy Towers

*Roof Ladders

*Floor Sanders

*Petrol Strimmers/
Hedgetrimmers

*Work Top Jigs

*Rotovators

*Carpet Cleaners

*Pressure Washers

*Steam Wallpaper Strippers

*Block Splitters

....AND LOTS MORE!

RING US NOW ON:

01736 757277