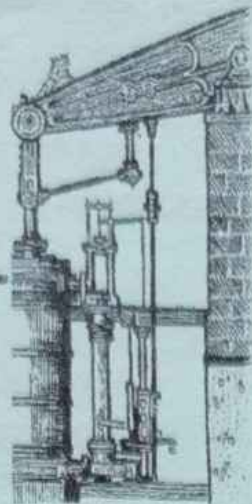


ISSUE 66  
Oct/Nov  
2005



# HAYLE PUMP NEWSLETTER

Circulation 2500 FREE copy, please take one.  
Made possible thanks to our advertisers.



Farewell Matt, we're going to miss you. Thanks for seven years of dedicated service, and we wish you every success in your new job.

**Hayle Pump Newsletter,  
Unit 14, Pratt's Market, Chapel Terrace, Hayle  
TR27 4AB**

**email: haylepump@theturks.fsnet.co.uk**

**If you wish to advertise in the Pump please contact Donna Anton at the phone no. / email below.**

**Editorial Team Members**

**Donna Anton**

**01736 753184**

**donna@donna-anton.com**

**Tim Appleton**

**N.A. Bodilly**

**Goudie Charles**

**01736 757351**

**Don Metcalf**

**01736 757720**

**Jeff & Sarah Turk**

**35 Penpol Terrace Hayle**

**TR27 4BQ, 01736 752319**

**Judith Venning**

**01736 753108**

**jvenning@worldline.co.uk**

**Roger Winterburn (Secretary)**

**01736 756393**

You can leave your news, letters, notices etc. at our unit in the market, or with any of the team. You can also use any of our drop-off points:

**At Foundry**

**Biggleston's Hardware**

**Colin's Market Garden**

**At Copperhouse:**

**Jolly Bodger**

**David Moyse Clothing**

**Advertising Rates**

**Half page (130 x 95mm) .... £20.00**

**Quarter page (63 x 95mm)..... £11.00**

**Eighth page (63 x 42mm) .....£6.00**

The Hayle Pump would like to remind readers that items, or articles and Public Notices are accepted as points of view and are not necessarily the opinion of the Newsletter Team. Correspondents are reminded that all material submitted must be signed with their name and address, and if possible, telephone number for validation. This will not be printed if you don't wish it to be. We reserve the right to refuse or edit items sent to us.

**HAYLE PUMP**

**SUBSCRIPTION SERVICE.**

For those readers who would like a Pump sent to family or friends elsewhere in the UK, or local people unable to get into Hayle to collect a copy, we operate a postal subscription service. Simply send us the delivery name and address CLEARLY PRINTED, together with £2.30 to cover the cost of stamps and envelopes, and we will send a year's issues (6 copies) of the Pump as soon as it is published. (UK addresses only—please make cheques/postal orders payable to "Hayle Pump Newsletter")

**Closing date for next issue:**

**20th November 2005**

**(advert's subject to space availability)**

## **BLOOMIN' WELL DONE HAYLE**

At 7.30am on Thursday 8th September a contingent of Hayle in Bloom committee members boarded the coach taking us to Hestercombe Gardens in Taunton, along with members from St. Just, Penzance and St. Ives for the results of the South West in Bloom Presentation Awards.

We arrived at 11.15am and proceeded straight to the Marquee for a question and answer session with the regional judges which finished at 12.30pm.

After lunch the presentation of awards commenced at 2.15pm and the air of anticipation was electric. Cheer after cheer went up especially when it was for our towns in Penwith. The cheers for Hayle were deafening as the announcement came that Hayle had come First in their class and been awarded Silver Gilt and also the South West Travel Association Cup for Towns and it was with the greatest pride that I accepted the cup from Sir John Carew Pole and the Mayor of Taunton.

Whilst it was a great honour to receive this very prestigious cup for Hayle I want to thank each and every one of you who contributed in any way to make this award possible. Hayle looked particularly lovely this year and I am sure our contribution of 40 tubs which were placed on the shops fronts plus the inclusion of Paradise Park this year made a difference.

It is not just tubs and hanging bas-

kets though that are important but many more things are taken into consideration like litter cleaning, dog cleaning, recycling of waste, conservation areas, parks and recreation areas, involvement of the community with various projects and schools.

The Hayle in Bloom Committee wishes to thank everyone so much for your dedication and hard work and special thanks must go to our wonderful gardeners, Matt, Mike and Bob. We look forward to getting the Cup and GOLD next year.

*Marjorie Roberts*

*Chairman, Hayle in Bloom.*

## **HAWKINS SITE REFERENDUM**

**As we go to print comes the news that an official referendum is to be**

### **CHATTER of CHOUGHS**

*An Anthology Celebrating the  
Return of Cornwall's Legendary Bird*

"A rich collection of specially commissioned poems and essays, *Chatter of Choughs* intertwines poetry, prose and illustrations with ornithological accounts of the chough's recent fortunes in Cornwall and further afield."



Available in mid-November from

The Hypatia Trust

16 Chapel Street, Penzance TR18 4AW

[www.hypatia-trust.org.uk](http://www.hypatia-trust.org.uk)

01736-366597

*Hardbound 176 pp. £20*

## PENPOL GARAGE

*In Tune with Technology*

All makes of vehicles repaired & serviced. Now able to offer

### CRYPTON PROSCAN DIAGNOSTICS

Identifies engine mgt. fault codes, ABS & airbag faults, service light reset, etc.

Free-Fit Tyres & Exhausts  
Car Audio Installations  
MoT Prep & Repairs  
Personal Attention  
& professional service

17a Penpol Terrace, Hayle  
Tel. 01736-757011  
Mob 07971-842908

*Now accepting all major credit cards*

held on the contentious issue of the old Hawkins Motors Site. Hayle residents will be asked "Should the Hawkin's Motors site be brought into public ownerships for use as an amenity area in perpetuity" with obviously a straight "yes" or "no" answer. Although the result will not be binding on Penwith Council, we are promised it will be taken into consideration by them when considering the issue.

Voting takes place on **October 13th** and polling stations will be located at the following venues:-

Phillack Church Hall

Methodist Sunday School at Mount Pleasant

Bird in Hand (portable cabin)

Scout hut by Penpol School

Hayle Community Centre,  
Queensway

Hayle Rugby Football Club (tbc)  
**So whatever your opinion on the matter, get out there and vote!**

Next Blood Donor Sessions are  
**2<sup>nd</sup> & 3<sup>rd</sup> November**  
Methodist Church Hall.



## AN AUCTION FIRST FOR BODRIGGY SCHOOL

Bodriggy Primary School will soon host the **first school internet auction** in Cornwall. The fund-raising auction will commence on **1<sup>st</sup> November 2005**. With the help of [www.schoolauctions.co.uk](http://www.schoolauctions.co.uk) and the Bodriggy School Association, we are hoping to raise significant funds for our school. The proceeds from the auction will go directly to the school, and will be used to improve the children's working environment by providing those facilities not provided by central government. We would like the whole Hayle community to become involved in our latest fundraising venture. We would appreciate any support you may be able to give us.

Some parents have already pledged several items for the auction but we would welcome anything that stands a chance of selling – anything from *good-quality* second-hand clothes to toys and games to books and videos to furniture. No donation is too small – or too big! Please keep this in mind before throwing out those

unwanted presents or 'surplus' items.

We would also very much appreciate donations in the form of "Special Events" (i.e., theatre tickets, a meal for two, use of a holiday home etc.) or "Specialised Services" (i.e., a haircut, extra tuition, a tennis lesson, or a couple of hours' gardening).

If you would like to donate any items, please contact our auction administrator, Jan Egan, by email [je\\_egan@yahoo.co.uk](mailto:je_egan@yahoo.co.uk) or phone 07740 585449 as soon as possible, so she can add the item(s) to the auction.

Further details of our auction can be found on the auction website at [www.schoolauctions.co.uk](http://www.schoolauctions.co.uk). Please add the website to your "List of Favourites" and don't forget to register online so you can bid on our items.

We do hope you will be able to give

us your support in this worthwhile venture.

Looking forward to a fun and successful auction!

**Jan Egan, Auction Administrator**  
**David May, Headmaster,**  
**Bodriggy Primary School**



**KIND OF  
CORNISH**

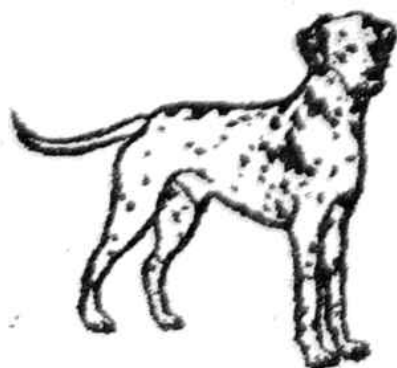


Geoff and Michaela Smith have long been stalwarts of the Penwith music scene – some readers may, for instance, recall their brilliant band **World Service**. Apart from their superb live performances, they have also always been notable for their high quality original compositions. Their new duo CD "Fragile

# **DYLAN'S CAFÉ**

**6-7 Foundry Square, Hayle, Cornwall**

**Tel. 754809**



**All Day Breakfast**  
**Fresh Cooked Lunches**  
**Cream Teas**  
**Vegetarian Menu**  
**Children's Menu**

**Proprietors Alan & Rosemary Cummings**

Leaf" consists of 10 songs, all written by Michaela, and all of a very high standard. As always, Michaela's vocals and Geoff's instrumental accompaniment are both exemplary. If one had, reluctantly, to categorise the music, then one would think 'folk', but folk of the highest quality – Joni Mitchell, for example, comes to mind. Every track is excellent, but highlights for me were the lovely musical story "Kathryn's Cabin", "Languish" with its retro-Rhodes keyboard sound, conga drums and excellent piano solo, and the exquisite "Tangled". Fans who know Geoff and Michaela's body of work will need no recommendation from me, but to those others- give it a try; it's an excellent 65 minute CD by two extremely talented local musicians. For ordering info, Geoff and Michaela can be reached on 01736

752188, and they also have a website,

[www.geoffandmichaelasmith.co.uk](http://www.geoffandmichaelasmith.co.uk).

Between April 28<sup>th</sup> and May 2<sup>nd</sup> this year the second Cornwall International Male Voice Choral Festival took place, with over 30 events presented in 26 venues throughout Cornwall. A CD of selected highlights has now been released on CD, with a representative selection of pieces performed by Festival choirs in Truro Cathedral and the Hall for Cornwall. Apart from the Cornish Choirs involved, other choirs came from as far away as Latvia, Germany and Estonia. They are all excellent, and the Cornish ones more than hold their own. For example, Paul Simon's "Homeless" is given a spirited rendition by the Mevagissey Male Choir, St Stythians Male Voice Choir con-

AWARD WINNING

# Safeclean

The furnishing care specialists from **GUARDSHIAN**

Recommended  
by leading  
furnishers  
throughout  
the U.K.

## Superb Cleaning & Anti-Stain Protection of Carpets, Upholstery, Curtains & Leather

- Oriental Rug, Tapestry and Antique Specialists
- Leather Specialists
- Flame Retarding
- Spot, Stain & Odour Removal
- Carpet Patching & Re-tufting

### CORNWALL OFFICES

**ST. AUSTELL**  
**01726 64560**

**FALMOUTH/HELSTON**  
**01326 319704**

Head Office: 152 Milton Park, Abingdon, Oxfordshire OX14 4SD

tribute an excellent "Alexander's Rag-time Band" and Cornwall Festival Male Chorus give a moving version of "A Hymn for Cornwall". The variety of the featured choirs is reflected in the wide span of the chosen music, and the CD is a fine example of male voice choirs at their very best. (78 mins, £12.50.)

The third item for review this time is "Thunder & Lightning", which is a concoction of stories by Cornish writers and performers. As previously mentioned in this column, with the adoption by most of the younger generation of "TV English" (or should that be Australian/American?), local dialects are in danger of dying out, so it is heartening to report that this CD is a selection of stories, some hilarious, some sad, recited in the authentic local Cornish accent. The performers include Randle Hurley, Liz Harman, David Tredinnick and Mike Sagar Fenton, and in the words of the sleeve note, "Dosen't 'ee worry my 'ansome. The dialect isn't hard and you'll soon 'get yer ear in'." An excellent spoken word release. (49 mins, £10.)

All the review CDs, and many other items by Cornish and Cornwall-based artists, as well as a large selection of classical music, jazz and nostalgia, can be purchased from:-


**West Penwith Music**  
**Union Street**  
**Penzance (Tel. 01736 364440)**

\*\*\*\*\*

*Why does the spiritualist cross the road?*

*To get to the other side.*

\*\*\*\*\*




## Fresh Approach Accountancy

Affordable book-keeping for small businesses.  
 Easy to use accounts service.  
 Approachable and friendly team.

- Payroll
- Payroll year end
- VAT returns
- End of year accounts
- Self assessment tax returns
- CIS support and advice

Take a Fresh Approach to your accounts  
 Licensed & Regulated by the Association of  
 Accounting Technicians



Contact Yvonne & Koreen on Tel: 01736 758344  
 or Email: [info@freshapproach.eclipse.co.uk](mailto:info@freshapproach.eclipse.co.uk)

## MAYOR'S ANNUAL WALK IN AID OF ST JULIA'S HOSPICE October 9th

**The Mayor of Hayle, Mrs Terry Lello, is inviting the people of Hayle to take part in the annual walk; this is a sponsored walk and all proceeds will go towards the £1.3 million which are the running costs of providing care at St Julia's Hospice.**

Since the walk first started many hundreds of pounds have been raised. This year the event takes place on **Sunday 9<sup>th</sup> October**. The start is 2pm, with registration from 1pm. There are three walks ranging from the easier route to the more challenging so there is a walk to suit

everyone's needs. It is also a great opportunity to have an afternoon out with friends and raise money at the same time.

For those who do not wish to take part in the walk, help is always needed with marshalling or making the tea, and donations are gratefully received.

For further details you can contact Terry Lello on 01736 757507 or June Allen on 01736 753797.

## TAKING SPACE

ART EXHIBITION  
at ST. ELWYN'S  
CHURCH 17 - 28  
OCTOBER



**Taking Space** is a group of women artists based in Cornwall, several local to Hayle.

**Mary Fletcher** from St. Ives uses painting, drawing, music and video to explore contemporary life and is currently studying for MA at Falmouth College of Art.

**Kate Cameron** lives at St. Erth. She uses pastels and acrylics. "I am inspired by colour, light and the natural world, particularly the incredible plants that grow so profusely here."

**Helen Atkins** is from Carbis Bay, a partner in 'Artspace' a successful gallery in St. Ives. She was recently featured on TV "The West we love best". She continually strives to capture the energy and power of the sea.

**Celia McIntosh** lives in Lelant. An innovative printmaker, she recently

# Westone

## GARDEN ACCESSORIES & PET SUPPLIES

The Causeway, Hayle Tel: 01736 752511

CHRISTMAS TREES ARRIVING SOON!

PLACE YOUR ORDERS NOW

*Seasonal plants, Suttons seeds, Winter Bedding, Pots, Tubs, Troughs, Bird seed, Fat balls, Nest boxes, Bird baths, Primroses, Rose arches, Garden ornaments, Sun dials, Patio slabs, Stepping stones, Animal feed, Horse feed. Shavings, Chippings, Cement, Coarse grit, Path edgings, Wall copings, Pier caps, Wrought iron work, Statues, Garden benches, Picnic benches, Wooden planters, Hot Tub spas & chemicals, Gas, Coal, Charcoal, Ice creams, Cold Drinks,*

**ALL AT CHEAP PRICES!**

## Hot Tubs Now In

had a successful exhibition at Treliske Hospital.

From slightly further afield are: **Diana Wayne** from Redruth shows prints and paintings of local scenes and family life. Diana was selected to represent Cornwall at a large Inter-Celtic Arts Festival in Brittany this summer.

From Truro, painters **Sarah Pound** and **Karen Smith** have exhibited together for several years in Open Studios. Their styles are distinctive yet complementary, using watercolour and acrylic on mainly figurative work. From St. Agnes, **Ann Oxley**, **Elizabeth Lees** and **Rosemary Myhill** are all landscape painters; Ann and Rosemary also do intriguing three dimensional work.

From Falmouth, **Helen Savage** makes exquisite ceramic and stone sculptures.

As a group we are all looking forward to exhibiting at St. Elwyn's Church and hope you will come and enjoy the experience.

*Lizzie. St. Agnes*

**Wanted:** Council Exchange  
2 Bedroom Bungalow midway  
Southampton/ Portsmouth for  
Housing Association 1 or 2  
Bedroom Bungalow or Flat/  
Maisonette at Hayle  
Tel: 01489 895102

## Hayle Decorative Lights

I hope everyone enjoyed the Raft Race in August, we managed to

# Fernleigh'



**BED & BREAKFAST  
EN SUITE  
COLOUR TV  
TEA & COFFEE  
NON SMOKING  
ALL ROOMS**

**26 COMMERCIAL RD  
HAYLE**

**01736 752166**

raise some more money to keep the lights blazing at Christmas, thank you to everyone who came, whether to participate in the races or just to enjoy the show. We were exceedingly lucky with the weather as well.

On Sunday September 18<sup>th</sup> we held our sponsored bike ride it was a lovely day too, we had a great day out and raised yet more money, so thanks again to those people who dug into their pockets once again. We made a round trip to Zennor stopping off at the Coldstreamer, Gulval for lunch in the sunshine. The youngest riders were 9 year old Ty Hendra and 12 year old Daniel Fulcher who did remarkably well and finished with energy to spare.

Next month we will start putting up the lights, I know it seems early but

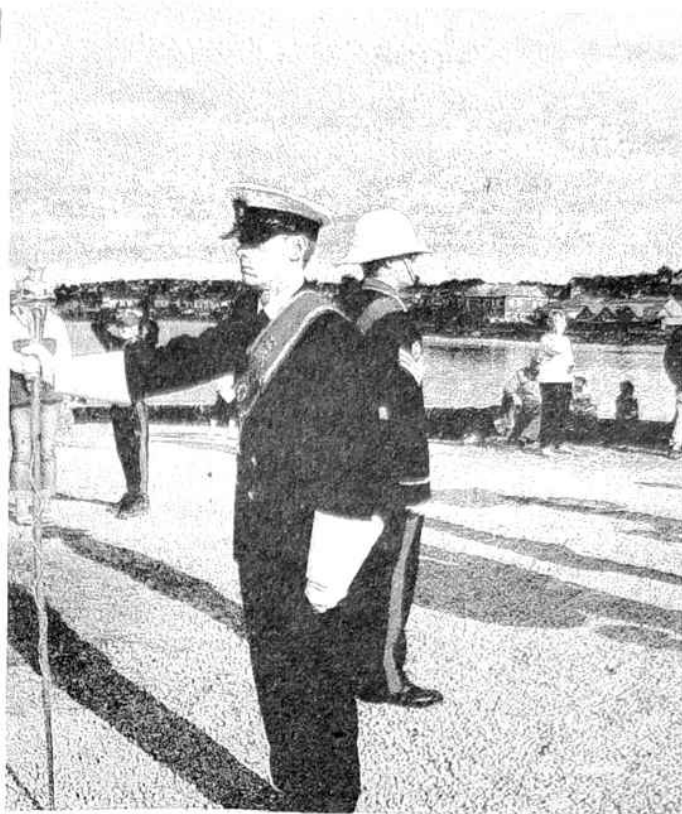
there's a lot to do. We are happy to report that we have a new member on our team, Dale Hawkins who has volunteered his services. Welcome Dale & Jackie, his wife.

We hope that the new swan and cygnets set piece will suit the refined and cultivated ambience of the Mill-pond, the poor old robin will have to perch elsewhere this Christmas.

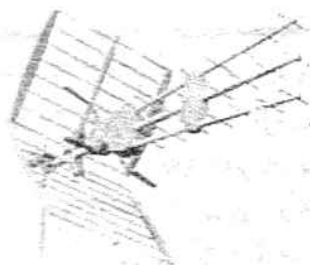
Please keep on coming to our Quiz nights, the next one is Friday October 7<sup>th</sup> at Hayle Rugby Club, and I'm sure it will be a fun night as usual

The Switch On this year is Saturday November 26<sup>th</sup> at 5.30pm at the Commercial Road Car Park.

*Dick Horwell Chairman, Hayle  
Decorative Lights 01736 752597*



Trafalgar Day in Hayle 18/9/05



# ALL AERIALS

## TV / FM AERIALS & SATELLITE SPECIALISTS

Members of the Confederation of Aerial Industries  
**ALL ASPECTS OF TV / FM AERIAL AND SATELLITE  
WORK UNDERTAKEN**

**ALL WORK GUARANTEED \* FULLY INSURED \*  
COMPETITIVE PRICES \* PROMPT RELIABLE SERVICE  
FOR FREE FRIENDLY ADVICE CALL JONATHAN**

**01736 759225**

Mobile 07979503907 / Email [jon@allaerials.co.uk](mailto:jon@allaerials.co.uk)  
[www.allaerials.co.uk](http://www.allaerials.co.uk)

## A present-day rhyme

Jack and Jill went up the hill, but  
not for a pail of water  
They went to buy a birthday present  
for their eldest daughter  
They admired several things that  
would certainly suffice  
The only trouble was they couldn't  
afford the price  
So they trudged back down the hill  
with scarcely a word spoken  
Disappointed their only option was to  
buy a gift token  
That's the trouble these days, not  
enough in one's purse  
And the signs are things won't get  
any better, and could get much  
worse.

Yorkie

## MAHA-LE-HAYLE?

The great white bird-man-angel  
swooped and circled, brilliantly  
spotlit against the black western  
sky while the smoke from the fires  
drifted in and out of the beams.  
Silence. Then the applause.

It's a while ago now, but those who  
were lucky enough to be amongst the  
audience for one of the Kneehigh/  
WildWorks performances of 'A Very  
Old Man With Enormous Wings' will  
surely not have forgotten that most  
moving conclusion. Certainly a night  
to remember and a real boost to the  
image Hayle presents to the 'outside'  
world. People had come from an as-  
tonishingly wide area to see the per-  
formance (Exeter, even London) and  
many left with high praise, not only  
for the performance, but for the town  
itself and its environs.

## The Farm Shop 31 Penpol Terrace Hayle

Open 6 days a  
week 8am - 5pm

For all your local  
produce, fruit,  
vegetables, plants &  
flowers, free range  
eggs, local honey,  
and lots more.

Local tomatoes, runner  
beans, & strawberries



## Moving House?

Whether buying, selling or re-  
mortgaging

**For a FREE estimate**

Phone Julie Blewett on

01736 752424

Or call into our offices at  
75 Fore Street  
Hayle

From the amusing yet touching opening, staged against (the night we were there) a glorious setting sun and golden estuary, through the exciting and amusing hustle and bustle flowing through the village of Maha-le to the play's sad but thought-provoking finale, this was great theatre that created the almost complete illusion of living – for a while – in another world. What a contrast it was to emerge into quiet and sleepy Hayle at 10.30 in the evening!

This was surely a great success for Hayle; congratulations go to everyone who must have worked so hard to support and stage this brave venture – let's hope there's more to come. Move over Minack?

***Don Metcalf***

## SOUTH QUAY – COULD BE?

“A Very Old Man with Enormous Wings” was a huge success, and rightly so – my wife and I thoroughly enjoyed our evening at such a wonderful theatrical event, and all within walking distance of home! As a Hayle resident, an additional pleasure during Kneehigh & Wild Works' stay in our town was the sensation as one drove round the corner, past the Royal Standard and Philp's, and suddenly the village, colourful standards and dome shaped tent came into view across the harbour. I know it was only the temporary, make believe village of Maha-Le, and certainly different architectural styles will come into play if ING get their planning permission. But for



# SILVERWINDS

*For all your  
Major and Minor  
Repairs and Services*

*Including  
Clarinets, Saxophones, Oboes and Flutes*

*Contact Your Local  
Qualified Woodwind Instrument Specialist*

*Tel: 01736 363566  
Mobile: 07779493927  
[www.silverwinds.co.uk](http://www.silverwinds.co.uk)  
[info@silverwinds.co.uk](mailto:info@silverwinds.co.uk)*

me, it certainly gave a foretaste of what the future could hold if Hayle is lucky enough to get a tasteful and easy on the eye development to replace the present derelict, barren eyesore.

**Taurufax**



**CANCER RESEARCH UK**

The Hayle Local Committee of Cancer Research UK invite you to a Fun Evening at Hayle Day Care Centre on Tuesday 25<sup>th</sup> October from 7pm.

A Beetle Drive is being organised to raise funds for this very worthy cause, refreshments will be provided and entrance is only £2 per person.

Please come, enjoy yourself, and help others at the same time.

*Stella Thomas, Hon. Chairman*



**AND THEN...**

Such a beautiful summer to enjoy at home and doing deliveries in and around Hayle; it has been an amazing revelation to discover so many beauty spots 'hidden in full view', I deliberately take the by-roads and leafy lanes between drops to get maximum benefit from the opportunity to explore our gorgeous county.

It took a few weeks to appreciate the idea that I didn't have to rush

**FIRST STOP SERVICES**

**Home & Garden Maintenance**

- *All work undertaken*
- *Free estimates*
- *No job too small*

Your first stop for a first-class service:

- – Painting, wallpapering, wall tiling, flooring & other home maintenance
- – All aspects of garden maintenance: patio laying, fencing, decking, hedge trimming, lawn mowing, tidying; etc.
- – Garden & home waste removal
- – Small household removals
- – Reliable, local & professional
- – Free quotes
- – No job too small

Steven (Hayle) 01736-753563

David (Mobile) 07745-310041

from place to place in a frenzy of activity, a bit like a railway engine that has suddenly been released from its rails and timetables the gift of time has grown and expanded organically with new thoughts and concepts gradually emerging. I shall continue with the deliveries as long as there is a demand for them so that there are even more choices for you, the customer. It is really good to be able to give people full attention and as much time as they need when they are looking for products to help them move forward in the natural health environment. Like anything else in the consumer domain there is as much information as disinformation freely available but having been privileged to receive good feedback through the years in the shop I can usually suggest a starting place and

## **“ROADCRAFT”** *School of Motoring*

Detailed and Patient  
Tuition from Chris Miller  
D.S.A., A.D.I., M.I.A.M  
Learner, Pass Plus and  
Advanced Driver Tuition

- \*FREE STARTER PACKS
- \*DVD VIDEO CD ROM LOAN
- \*MOCK TEST PRE-TEST
- \*INSTRUCTION FOR  
NERVOUS DRIVERS
- \*NIGHT DRIVING TUITION

0800 026 0293  
01736 752800 (24hrs)

*Staying safe on our roads for life.*

often that is all that is needed for people to empower their own lives. It has also been good to get back to doing some hypnotherapy which ties in excellently with Australian Bush Flower Essences.

Enjoy what promises to be a classic 'Indian Summer'. My contact details for deliveries or assistance are:

Tel: 01209 842509

Text: 07817 183924

e-mail [felicityj.laws@virgin.net](mailto:felicityj.laws@virgin.net)

[www.felicityhealth.co.uk](http://www.felicityhealth.co.uk)

*With Love & Light, Felicity*

### ***Hospital Visiting***

There has been much discussion in the local papers recently about the cost of visiting Treliske Hospital and the difficulty of parking.

Did you know that the X27 bus

goes from Hayle to Treliske non-stop, takes 30minutes and costs £3.40 return, which compares very favourably with the cost of petrol and parking if there is only one person who is doing the visiting? If you are over 60 and have a Cornish travel card, available free of charge from the library, the fare is only £1.70

The bus leaves Copperhouse at 13 minutes past every hour ( 2 mins. earlier at Foundry) and goes into the grounds at Treliske, stopping at the main entrance and at the Tower Block. Unfortunately it's no good in the evening as the last one that gives you time for a visit is 4.13.

The last one back to Hayle leaves Treliske at 5.43 getting to Hayle at 6.16.pm

*Jeff Turk*

## **HEAD TO TAIL** **EQUESTRIAN**

**FOR HORSE AND RIDER**  
at POOL MARKET

Saturday & Sunday

mob. 0775 990 5276

mob. 0781 645 1454



## **KRIS GAYLE GIGS** **NEAR HAYLE**

After attracting another full house at St Ives Jazz Club in September, Hayle jazz diva Kris Gayle will be playing even closer to home, with two gigs at the Watermill, Lelant. The dates are Friday 14<sup>th</sup> October and Friday 25<sup>th</sup> November, and Kris will again be accompanied by Hayle piano virtuoso Viv Rodd.

## Quiz - Food Glorious Food

Another word game by Cleverclogs. This asks you to find the food items hidden in the following sentences:-

1. Now, heat the mixture, stirring all the time.
2. The undertaker placed a very sombre advertisement in the Pump.
3. I want three volunteers - Jeff, Lou, Robin - you'll do.
4. Once, Real Madrid always seemed to win the European Cup.
5. Maybe answer number one is easy.
6. Radiation, ionisation, evaporation, all occur in the atmosphere.
7. "Take a pot at one of my targets" the fairman said.
8. Just mouth one yes or no, that's

all I ask.

9. Jake is strong, but Terry is stronger still.

10. Cheers! Here's to a stupendously good year.

11. It's the results we deserved I suppose.

12. Let's take a stroll down to the bakery.

13. Gotcha! Mr Cleverclogs, you don't get away with this one!

14. The frying pan has a usage far greater than any other pan. (2 answers)

15. My new leg gets me around much quicker than my old one did!  
*The prize as usual is a £20.00 voucher to be spent with any of our advertisers. Closing date November 20<sup>th</sup>.*

Last quiz in issue 65 was to find the names of trees. We had a bumper

## ★ LOGS BY THE LOAD ★

FROM

CHRIS THOMAS

BATTERY MILL LANE ST ERTH

telephone (01736) 756737

GOOD QUALITY LOGS TO SUIT ANY OPEN FIRE  
DELIVERED TO YOUR DOOR AT JUST

**£65.00** FOR A FULL LOAD OF

**- QUALITY LOGS -**

undle of entries, and the first correct ntry drawn out of the Editor's base- all cap was sent in by Mrs S. Rule of layle.

The answers were:

- |          |             |
|----------|-------------|
| 1. Plane | 9. Apple    |
| 2. Palm  | 10. Elm     |
| 3. Maple | 11. Ginkgo  |
| 4. Larch | 12. Cedar   |
| 5. Yew   | 13. Cypress |
| 6. Hazel | 14. Lemon   |
| 7. Rowan | 15. Acer    |
| 8. Peach |             |

## **HAYLE RUGBY CLUB**

Hayle RFC are now taking book- ings for Christmas parties and staff parties throughout December.

3 course Christmas dinner costs £11 per head, and on bookings of more

than 75 free entertainment is pro- vided.

There will be an organised grand firework display on 4<sup>th</sup> November, with children's fancy dress disco, barbeque and disco.

Bingo is every Thursday evening, and don't forget our car boot sale every Sunday morning.

New Years Eve tickets will soon be on sale for a great night of live music with The Flamingos.

Annual Social Membership only £2. Call 01736 753320 or Sharon on 07900 604435 for more details.

\*\*\*\*\*  
*What is the first thing sprites learn at school?*

The elfabet.

\*\*\*\*\*



# **J C ELECTRICAL**



**Your complete 24hr Electrical Service**

**City & Guilds Qualified**

**Tests to 16th Edition BS7671**

**Rewires, New Build, Lighting, Extra Sockets,  
Showers, Heating**

**Prompt Reliable Service**

**All Work Guaranteed**

**Free Estimates**

**Hayle 01736 754543**

**Mobile 07739 577 549**



## POLICE BEAT

All the Neighbourhood Beat Managers for the Hayle area are contactable by mobile telephone, to which the public can have access. Details of each NBM and their contact numbers are as follows:

**PC Simon Mars – Hayle South**  
0773 608 5956

**PC Philip Rowland – Hayle East**  
0797 098 4978

**PC Tamsyn Williams – Hayle North**  
0797 098 4967

**PC Samantha Mars - Hayle West**  
0773 608 5945

My colleagues, who are committed to their roles, are more than happy for these numbers to be passed directly to anyone who may benefit from them. For example I recently informed Councillor Matthews, who I am aware has been receiving calls from some members of his ward regarding problems in the Millponds area of Hayle, to pass on my number, as I am happy to take calls from members of the public. The mobiles provide a simpler method of being able to contact your local beat officer about local issues and problems. There is also a message system on the phones which can be utilised should the need arise. I, along with my NBM colleagues, make contact with individuals immediately upon return to duty whenever messages are left.

Neighbourhood policing is obviously starting to make its mark in Hayle, and I personally feel that this



## Brookvale

### Residential Care Home for the Elderly

Family run home, by the resident proprietors Mr & Mrs Broadbridge & Mrs Pleasants RGN, which prides itself on a personal and caring environment. Situated in the centre of Hayle close to all amenities.

Private and DSS residents welcome whether short or long stay. Fully registered with the CCC, and a member of the Cornwall Care Homes Association.

- all necessary care & assistance supplied
- large garden and patios
- two lounges & spacious bedrooms
- full 24 hour care & central heating
- weekly hairdresser & chiropodist
- domiciliary services, day care & M on W

6 Commercial Road

Hayle, Cornwall TR27 4DG

**Telephone: 01736 753608**

# BARTON print

for all your printing requirements

**- 07799 411525 -**

**General Printing  
Letterheads  
Business Cards  
Compliment Slips  
NCR Pads & Sets  
Flyers & Leaflets**

1 Turnpike Road, Connor Downs  
Hayle, TR27 5DT

R	ROY
H	HAYES
G	GLASS
<p>For all your glazing requirements</p> <p>Over 40 years experience</p> <p>Rear of Central Garage Hayle</p> <p>Tel/fax: 01736 754023 Mobile: 07880 530 795</p>	

## PLANTS ON THE TOWANS, No. 9 YARROW

The generic name for yarrow, *Achillea* (from *Achillea Millefolium*) comes from the name of the Greek hero Achilles who was taught by the centaur Chiron to use yarrow to treat battle wounds of his army during the Trojan wars. The specific name *Millefolium* means 'of a thousand leaves'.

Growing all around the Towans (more on the fringes), flowering all through the summer, yarrow is a very useful herb. Effective in the treatment of nervousness and sleep disturbances, yarrow produces a feeling of peace and relaxation, particularly in women going through the menopause. Yarrow is one of the best known herbal remedies for fevers, either as a tea or in the bath. It is also reputed to be helpful in allaying rheumatic pain. A hot infusion induces a therapeutic sweat which cools fevers and expels toxins. Like all sweat inducing remedies, yarrow encourages blood flow to the skin and this helps to lower blood pressure.

The dried stalks of yarrow are the original way of consulting the I Ching, the Chinese Book of Changes.

**Yarrow Tea:** Take two or three fresh or dried leaves per cup of boiling water. Infuse for four minutes, strain and serve, sweeten if required or add a slice of lemon, it is a lovely soothing drink.

*Michael Locke,  
Plant Spirit Medicine Practitioner*

is having a huge effect on the crime figures. My colleague in Hayle West is trying to establish a youth club in the Goldsithney area. We have established a good working relationship with all the schools in the area, working to break down barriers in the community regarding youth crime. PC Williams is working closely with the Carnival organisers to make sure that Hayle's largest community event runs smoothly. PC Rowland organises police surgeries in some of the rural areas of Hayle, providing an extended police service.

*Simon Mars, Constable 5445,  
Neighbourhood Beat Manager –  
Hayle South.*

## BMX Track Back?

No doubt lots of people remember the BMX bike track that used to be at St. Erth. The track was so well used by local young people it was such a shame that it had to be flattened due to problems with insurance, especially after St Erth village had put so much time and effort into the project.

I would like to see the track rebuilt. Originally I was hoping that we could do it with money raised through donations but it seems the insurance would be an insurmountable problem. I have emailed Penwith District Council, hoping they will take on the responsibility for the track to be rebuilt and look after the insurance aspect.

There are dozens of BMX Play Tracks built across the country which are being successfully managed by Local or District Councils. These Play Tracks have a positive effect on the health of young people by encouraging them to lead more active lives as well as providing a safe, exciting and challenging place for both boys and girls to ride their bikes.

If you want the Bike Track Back please email the Sports Development Officer Simon Barrand [simon.barrand@penwith.gov.uk](mailto:simon.barrand@penwith.gov.uk) to let him know.

If you are interested in seeing some track designs or getting involved please come and see me in the bike shop.

*Kate, Hayle Cycles*  
36 Penpol Terrace, Hayle TR27 4BQ

# PHILP'S

FAMOUS PASTIES

EST



1958

**\*BAKING 7 DAYS A WEEK\***  
FOR THE **GREAT TASTE OF**  
CORNWALL'S  
**PREMIER PASTY MAKERS**  
WITH OVER 40 YEARS  
EXPERIENCE  
**VISIT US NOW**  
AT OUR SHOPS AT-



**1, EAST QUAY,  
HAYLE**  
**01736 - 755661**



**1, FOUNDRY HILL,  
HAYLE**  
**01736 - 753302**



**MARKET PLACE,  
MARAZION**  
**01736 - 710332**



**THE SQUARE,  
PRAZE & BEEBLE**  
**01209 - 831360**

# Letters.....

## Letter

*My sincere thanks to everyone who sponsored me in the Supasplash for Cancer research on September 3<sup>rd</sup>. The total money you sponsored me for was £1006.12p, you're goodness itself. May I also point out to youngsters who can swim, please get yourselves sponsored next year; it's for a well worthwhile cause. Again everyone, thank you, and God bless you all.*

**Doreen Nicholas**

## Letter

*In August my wife and I visited Hayle for the first time on a week's holiday. I would like to take this opportunity to comment on how much we enjoyed our time and how impressed we were with the town of Hayle itself. We were fortunate with the weather, and most places look better when the sun is shining, but Hayle has many assets not dependent on the climate. The Towans (dunes to us) and the lovely long stretches of beach are wonderful, the harbour and the estuary provided more pleasant walks.*

*Our visit coincided with the theatre production on the quay, which was unfortunately sold out before we arrived; nevertheless the spectacular flags and a late-night glimpse of the 'Flying Man' were some consolation and it was pleasing to read the very favourable national reviews of the production. On our Sunday in Hayle we attended the excellent Lions' Fun Day which culminated in the Hayle Town Band Concert – what a superb*

*day's entertainment!*

*It was clear from walking round the town that you in Hayle have a vibrant community, lots of local groups and activities providing entertainment and enjoyment for visitors and residents alike. Shopkeepers were friendly, people in the street readily smiled and spoke and the whole atmosphere was welcoming.*

*I browsed through a copy of the Hayle Pump - another achievement for such a relatively small town - and thought I'd share my thoughts on Hayle with your readers. I hope the good weather continues and future visitors are able to enjoy their visits as much as we did.*

**Don Astley, Crompton Way, Bolton**

## Letter

*What a fantastic time we had at the performance of 'A Very Old Man With Enormous Wings'. All of the cast and musicians were superb. The flags certainly brightened up the quay. Many locals and visitors we spoke to were so impressed they wanted to return; however as we all know it was such a success that tickets were sold out for every night.*

*We would like to say 'congratulations' to all the local stars, also to our granddaughter Kyra Harris who played Mannamu Now; she made us very proud. What a performance!*

*This type of event is clearly of benefit to the local community and visitors alike and every effort should be made to promote similar future events.*

**Cheryl & Terry James, Hayle**

Letter

**Walkway between Copperhouse Pool and Hayle Swimming Pool.**

*It must be two years since the right of way which runs behind the swimming pool was abruptly closed at both ends by a serving member of Hayle Council (acting under orders from the Council.)*

*The excuse given at the time was that a member of the public had tripped up and the path was deemed to be too dangerous.*

*I have seen the improvements which have now been made to the path, including a new concrete step, and yet Hayle Town Council is still evading reinstating this short cut. For people like me, who used to use the path regularly, and for those wanting access to Clifton Terrace, this closure is a nuisance. Cllr Shirley Oliver has tried to get it re-opened, and I know at least two of our local councilors who are in favour of its restitution – what about the others???*

**Jean McKay, Hayle Terrace.**

**(Ed. Note.** Any Pump readers with thoughts on this issue, please contact Hayle Town Council.)

Letter

*I have received some excellent feedback from my previous letter published in the Cornishman, about the lack of council spending on Hayle facilities, in relation to Penzance and St Ives.*

*One elderly lady in particular wrote to me personally, with her concerns regarding the proposed housing development on the Hawkins Garage*

*site. (She was too frightened to have her name in print in case someone threw missiles through her window.) So on behalf of her and all other residents of Hayle who felt the same way when talking to me, I will voice their concerns regarding the Hawkins site.*

*1. More consideration should be given to the site regarding the hazards it will cause if the proposed three storey flats and houses take place. Where you have housing you have young children, children are drawn to water like magnets. How long before a child falls into the pool, causing another tragedy, because there are no gardens to protect them?*

*2. Housing brings tenants, tenants bring more cars, which end up parked on the main road. With such a narrow road in the area this would cause a big hazard especially as within yards of the site there is a dangerous blind corner, at the Royal Standard, which already is a Black Spot. Young children will again be in danger trying to cross this busy road, certainly in the summer months, as this is the main road through the town to Penzance and St Ives, and already becomes badly congested.*

*Surely the site would be much better preserved as a beautiful memorial or tea garden, where the elderly could sit and contemplate while enjoying the lovely view in peace, a view which housing would destroy forever. The showrooms could be utilized to make a recreation centre for the elderly and lonely, where they can meet and make new friends. This is badly needed, as day centres are full and cannot take everyone.*

This site is ideal for the purpose.

So much heritage money is being spent on barns etc tucked away out of sight at Foundry where few people go, surely it would be more feasible to use heritage money and other funding available to preserve the Hawkins site for many people to enjoy, now and in the future?

I think the planners and councillors of Penwith should have a little more foresight when allowing housing in Hayle. Especially with this particular site, we do NOT need a concrete jungle here, there is enough housing planned for Hayle with 700 houses proposed on the Carnsew site, housing at Loggans Mill, Guildford Road, Pentewan and others in the pipeline in a green area near the station.

When will it stop?!!

Give some thought to our small

Medical Centre, how will the doctors cope with all the extra patients housing brings. We have seven doctors now, some are only practicing part time. There are the schools, how will they cope? They are full to overflowing now. So please reconsider planning for this site, and do something for the majority of the people of Hayle that we can be proud of, and with a little foresight prevent a tragedy in the making, or be it on your conscience when it happens, because it will!!

All mail I receive, postcards will do, will be handed to a councilor on your behalf. So come on, I want a full postbag! In the meantime, make sure you don't miss the referendum. the Hawkins site on October 13th get out there and vote for Hayle's future!

**Mrs Del Stevens, 14 Station Hill,  
Hayle TR27 4NG**

**Goldstephen House  
13 Conker Road  
St Erth Praze  
Hayle  
TR27 6EQ**



**01736 850363**

**OPEN DAILY (EXCEPT THURSDAYS)**

**10.00am – 6.00pm**

**WIDE RANGE OF QUALITY PLANTS**  
**AT AFFORDABLE PRICES**



## Letter

*I do hope the locals won't mind me being a little bit critical, as I've only lived up the Towans for the past 25 years, but having seen all the hard work that goes on for the different events in Hayle I am left wondering why no-one knows about the happenings until it's read about after being reported in the newspapers.*

*Hayle Regatta – I knew nothing of it until I bumped into Dick Horwell running around like a flea in a fit doing his very best to see all was running smoothly. A woman who lives above the pool said "What's going on down there?" as did some others.*

*Trafalgar Day – the Lions put on a good show and even had a brass band etc. Even the Mayor was there but it was poorly attended in my view. Everbody I have asked have all replied the same "We didn't know it was on", but one did say it was mentioned twice on Saturday night on Radio Cornwall. Who listens to the local radio on Saturday nights, or am I alone?*

*Why not put a large notice on the railings down by the viaduct and who knows you might get some more people to part with their money and help even more with local charities?*

*Good luck all you hard workers!*

**Name & address supplied.**

## **FOOTSTEPS**

**27 Penpol Terrace, Hayle  
01736 757735**

*Specialising in wide-fitting footwear for men and women. All dancewear available, i.e. ballet, tap shoes etc.*

## **F.L. KEAST**

F.B.D.O. Dispensing Opticians

**18 Commercial Road,  
Hayle tel. 753145**

**21 Alverton Street,  
Penzance tel. 366106**



**Light intelligent lenses  
for UV intelligent people**

Rodenstock ColorMatic™ Extra

**Range of stylish frames**

**Single vision £95.00  
complete**

**Variofocals £134.00  
complete**

Rodenstock. As you see.



# FRAMECRAFT

for bespoke framing  
by an artist.

Reasonable prices.

Also painting  
lessons.



Call Jean  
on  
**01736  
756370**

campaign against marine pollution. The next event will be at Copperhouse Creek on Sunday October 30<sup>th</sup> at 10am; I hope to see many of you there.

We recently held an event in the Eric Grace Memorial Hide to give visitors the opportunity of seeing waders at Ryan's Field on the high tide. Undoubtedly the highlight was seeing the Osprey as it perched on a post for overhead power lines. The Osprey is still around so keep a look out; it appears to favour the main estuary and Ryan's Field and can be seen throughout the day diving into the water from a great height to catch fish. A few Curlew Sandpipers have been seen at Carnsew Pool and Bar and Black-tailed Godwits returning from the Palearctic on Ryan's Field and Lelant, as well as good numbers of Curlew, Dunlin, Redshank and Little Egret seen across the reserve.

On Wednesday October 5<sup>th</sup> there will be a guided walk at Carnsew Pool and on Monday 17<sup>th</sup> October there is a second event at the hide; for more information contact us on 01736 711682 or visit [www.rspb.org.uk](http://www.rspb.org.uk).

Everybody is welcome as the warden will be on hand to help identify the birds!

*Jenny Parker, RSPB*



**RSPB  
NEWS**

I would like to thank all the volunteers helping to clear litter from the reserve. Our last event coincided with the Marine Conservation Society's annual beach survey, gathering valuable data to aid in the cam-



**W. J. WINN**  
FUNERAL & CREMATION DIRECTORS  
PRIVATE CHAPELS OF REST  
24 HOUR SERVICE

69, FORE STREET  
HAYLE  
01736 752124

&

TRENWITH TCE  
ST. IVES  
01736 793029



## Hayle Art Society

The society has vacancies on Tuesday afternoons. Water colour, acrylics, oils, pastels. Beginners welcome! We meet at the Passmore Edwards Institute 1.00pm – 3.00pm. Ten week terms cost £13.00, with professional tutors five times a term. An annual exhibition is held in Phil-lack Church Hall during Heylfest.

Further information:- Ann Foreman  
01736 754452.

### TREVE DYER *Accountant*

tel: 01736 758333

fax: 01736 758303

www.trevedyer.com

e.mail: info@trevedyer.com

9 Dowren House

Foundry Lane

Hayle

TR27 4HD



After mishearing the  
Priest Alan went out  
to exercise his demon's

## Country Skittles ...



welcomes Pump readers  
of all ages.

4 traditional 9-pin skittle  
lanes

Restaurant & snack menu  
available at all times

Roast lunches served all  
day on Sundays

Fully licensed bar

Target shooting gallery

Crazy golf

Pool Table football

Air hockey Batak

Lots of traditional board  
games & many other  
games to play.

We cater for groups large and  
small, and provide an ideal venue  
for family get-togethers, birthday  
parties and works outings.

To get to us, take the B3302 out of  
Hayle towards Helston and turn  
right when you see our sign just  
past St Erth Praze. We are about  
half a mile up that road.

Booking in advance is advisable at  
busy times.

For further information ring  
us on 01736 850209

## HAYLE LIBRARY NEWS

Hello to all our users and maybe new members. You would be most welcome to come along and join in our various activities. Every Wednesday at 3.30pm we hold a story-circle with lots of books and fun things to do; families please come along!

For the older reader we hold writing, reading, poetry and play reading groups; if you would like to join, please use the contact details at the end of our news.

Computer use is available for all, and the first half hour is free for members and non-members.. We also provide help for parents to research homework.

Oliver will now be providing computer lessons every Monday; they are free and informal.. To avoid being disappointed please book in advance. Don't worry if you have not used a computer before as we will help.

We loan books and have for hire up-to-date videos, dvds, games (Playstation and Xbox) and talking books for adults and children. We always welcome ideas from customers on books they would like to see on our shelves, do let us know.

If you are not a member, please remember it is FREE to join. If you have any queries at all, do not hesitate to contact us.

[hayle.library@cornwall.gov.uk](mailto:hayle.library@cornwall.gov.uk)

Tel. 01736 753196

Fax 01736 755932

*See you soon, Hayle Library Staff*

# COLIN'S MARKET GARDEN DICTIONARY

OFF FOUNDRY SQUARE

## DAMSON



FROM THE DAYS WHEN DRAGONS WERE DRAGONS AND EVERY WOMAN HAD A GOOD KNIGHT! THIS FRUIT HELPED COIN THE PHRASE "DAMSEL IN DISTRESS" THOUGH THIS WAS A CAHNGE, FOR THE SAKE OF DECENCY, FROM THE ORIGINAL OUTBURST OF 'SIR LOIN DE BEEF' WHO, WHEN SEEING HIS ELDEST BOY IN WOMEN'S CLOTHES, BELLOWED:-

**"WHY IS MY DAMN SON IN THIS DRESS??!!\*@\*!"**

SOURCE: JEREMY (Darwin) JOSLIN'S WORK "ORIGIN OF THE VEGETABLE SPECIES"



## The View from the Steeple

Over three months have passed since the builders moved in. Now, after a long summer of living with scaffolding and dust the Rawling's window has been restored, the roof re-tiled and the work is almost completed.

In spite of a sense of organized chaos we still managed to stage our Summer Art Exhibition with reasonable success and the Civic Service broke new ground screening a film made by Penpol School as a backdrop to a performance by the School's Choir. The screen was actually a sheet suspended from the scaffolding in front of the altar, but it worked and the effect was quite impressive.

Taking a welcome break with my cousin, Simon Sparrow at Phillack, the family managed to combine a touch of clean sea air with the Church's Arts and Crafts Festival and yummy cream teas. It was definitely worth the visit and certainly fortified us for the days ahead. Mind you, the builders left us plenty of tasty titbits too!

Now with autumn creeping up on St. Elwyn's the scaffolding is at last beginning to come down and we are starting to prepare for festivals and events again.

Harvest Festival will be celebrated on Sunday 2<sup>nd</sup> October followed by St. Elwyn's Dedication Day on 8<sup>th</sup> October.

The Newlyn Male Voice Choir will be visiting the Church for a concert

## ALAN ORCHARD & SONS

APPRENTICESHIP SERVED



PROFESSIONAL TRADESMEN

CARPENTRY & JOINERY

uPVC FASCIAS

ROOFING

BUILDING & MAINTENANCE

01736 756687

07787 148571

27 GUILDFORD ROAD

HAYLE TR27 4PP

### ***Biz and Bytes***

Contact us for all your computer and business requirements for home and small business users

Computer hardware and software troubleshooting and repair  
· computer training · word template design · document scanning · internet sharing · broadband · website creation  
· computer supply, advice and installation · computer/printer/scanner networking · typing services · autotext.

Budget PC £150.5, Budget Laptop £550 - Windows software - see our website for further details

No call out fee · Female technicians available

Tel: 07774 227211 01736 755971

[enquiries@bizandbytes.co.uk](mailto:enquiries@bizandbytes.co.uk) [www.bizandbytes.co.uk](http://www.bizandbytes.co.uk)

on 16<sup>th</sup> October and the final art exhibition of 2005 opens on 18<sup>th</sup> October. It runs until 28<sup>th</sup> October and features work by artists from the Penzance Arts Group. Proceeds from both these events will be going to church funds and we hope you will come and enjoy them.

As I waved goodbye to my neighbours the swallows and house martins when they flew south for the

For just one hour of your time at your convenience

you can have peace of mind and provide thoroughly for the security of your family

- **Professional will writing service**  
covering Cornwall
- **Personal & confidential**  
consultation in your home

- **Advance Preparation for later years**

- Minimise the impact of Inheritance Tax
- Setting up Power at Attorney
- Community Care Provision
- Severance of Tenancy
- Living Wills and Advanced Directives
- Funeral Planning

**Support your family when it matters**

- Safe storage
- Probate assistance
- Executor advice

**Specialist Independent Advice**

**W.D.S.**

**Will Writers**

Over sixteen years of will writing in the UK means you can trust us to advise you properly

For peace of mind telephone  
**Redruth 01209 313624**  
**Mobile 07957 292 668**

[www.wdsassociates.co.uk](http://www.wdsassociates.co.uk)  
The Association of Lawyers & Legal Advisors

**ANGOVE**

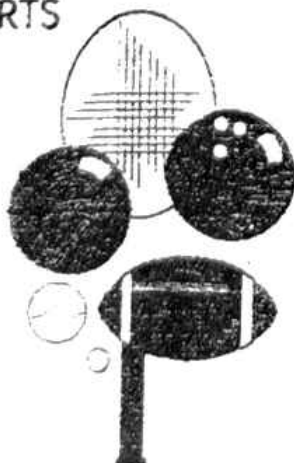
**SPORTS**

COPPERHOUSE, HAYLE

01736 - 752238

FOR ALL SPORTS  
EQUIPMENT  
CLOTHING &  
FISHING  
TACKLE

\*  
RACKETS  
REPAIRED  
& RESTRUNG



winter, I reflected on the waning season. St Elwyn's has come through a long and difficult summer, but hopefully we can put things behind us and start to move forward to better times ahead.

I sincerely hope so. We can all do with a little more love and light in our lives!

See you all again, soon!

*The Sanctuary Sparrow.*

## **ANYONE FOR A SNORKEL?**

Is anyone out there interested in forming a snorkeling club in Hayle?

Snorkeling is a safe and very interesting sport. It is good exercise, using about the same energy as cycling or walking and is inexpensive. A snorkeling club would offer plenty of opportunities for social activities and, of course, we would be able to make use of the beautiful coves of Penwith and the Lizard.

With Father Christmas already taking orders the time is ripe to drop a few hints and be ready for 2006.

If interested, please contact Robin at the address below.

Remember; 'It is easier to snorkel than to swim!'

*Robin Phillips [formerly of Phillips Butchers and Hayle Fitness Studio]*  
5b Gwel Trencrom, Hayle, TR27 6PJ  
Tel 01736 753071 or  
Mobile 0797 488 4654



This newsletter has been assisted by a grant from the Neighbourhood Renewal Unit.

## Music Hall Memories

The missives of "Yorkie" and Gordon Chapman recalled the hours of pleasure we once enjoyed on the weekly outings. The years spent with my stepfather and mother were centred on this form of entertainment. Born Andrew Elliott McCann (stage name A.J. Powers) in Glasgow c. 1892 my stepfather spent his entire working life as a music hall comedian. He started work at the Glasgow Empire as a stage hand, learning his art by watching the stars of yesteryear, but above all studying the various moves, e.g. how to enter, how to exeunt and above all keep moving about the stage – an essential, particularly I understand at the Glasgow Empire, for if an act failed to impress the audience then best to

"run for it"!!

Recently I purchased a copy of Roy Hudd's "CALVALCADE OF THE MUSIC HALL", the front cover of which comprises several billboards of the Thirties. Ronnie Ronalde was the star on one such board, and further down on the same bill "A.J. Powers".

The life was hard at times especially when travelling from one location to the next, and as Yorkie mentioned, Crewe station in the small hours of a wet Sunday was a catastrophic stopover, just waiting! However there were theatres in every town, all over the U.K. Andy, as I recall seldom "rested" and often took an overseas engagement to Australia and New Zealand and other parts of the globe coloured red in our school atlas. Often he would get a "Summer Season" engagement to appear at

**David Moyse Clothing**

**Your  
local  
shop for**



**men's, women's &  
children's clothing**



**Call us now**

**01736 752053**

**38 FORE STREET,  
COPPERHOUSE  
HAYLE**

***Winter is  
not far  
away.  
Call and see  
us today for  
your hats,  
gloves and  
scarves for  
all the  
family***

**MRS. TERRY LELLO CC**  
**HAYLE TOWN MAYOR**  
**PENWITH DISTRICT COUNCILLOR**  
**CORNWALL COUNTY COUNCILLOR**



**“If you have a problem and need some assistance, please call, and I will do my best to help.”**

Contact telephone:

01872-322570 (w)

01736-757507 (h)

Email: [tlello@cornwall.gov.uk](mailto:tlello@cornwall.gov.uk)

Candy Gardens on Guemsey, possibly his favourite spot. Mrs Falla was the “digs” landlady he always booked with – strange that these ladies were always the butt of the comedians! Landlady stories are a series of legends, possibly, one day a tome will be written about them.

Of course, most of the Music Halls no longer exist, or are now used in different ways. The Empire at Sunderland, which houses a Music Hall Museum, and where A.J Powers’s bagpipes, kilt (several) and props reside I believe to this day, is still an operational Music Hall albeit part time now. (It shares with the local dramatic society.) Then there was the real Music Hall of its day, “The City Varieties” at Leeds. Cosy, intimate, it was the performers’ paradise, and in many ways their most difficult en-

agement. In passing I must mention that a relation of mine was first violinist in the resident orchestra there for many years. In later life he had a cross to bear – his name was Frank Spencer. He never forgave Michael Crawford.

For myself, well I met many of the stars of the day... Arthur Lucan & Kitty McShane, all of the Crazy Gang at one time or another, Flanagan & Allen, Nervo & Knox, Naughton & Gold, Donald Peers, Revnell & West, Dorothy Squires, Hylda Baker – the list goes on and on. I have saved my favourite until the end, he was without doubt the funniest, most clever entertainer that I ever had the pleasure to meet, anyone who saw him left the theatre grinning like a Cheshire Cat; not Max Wall he was brilliant but for my money, every time, BILLY DAINTY. Many comedians watched and learned from this brilliant performer.

I confirm Yorkie’s comment that they worked hard for their keep, but they also fell into one of two categories; they totally abstained from alcohol, or they drank like fishes.

Andy and his like are gone, but not forgotten by many of us.

*George, John Ellis Court, Hayle*

## **HAYLE ARCHIVE**

**The winter opening hours are:**

**Tuesday & Thursday 2.30 – 4.30.**

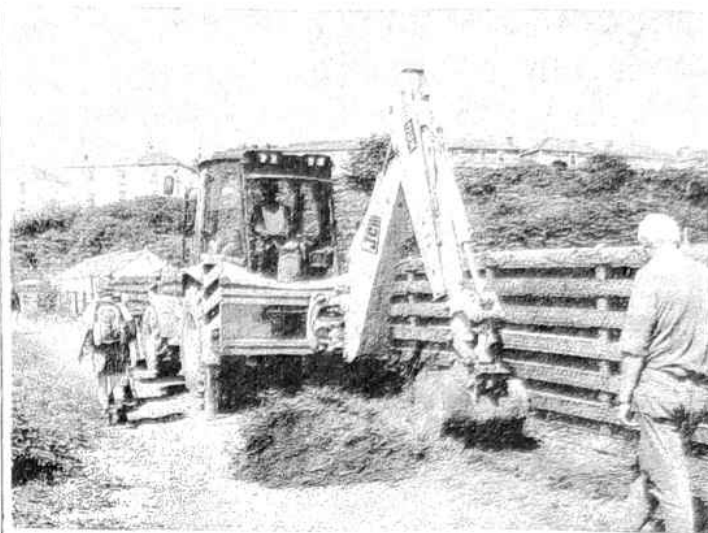
Enquiries please phone 01736 752974

Between 9.30 – 11.00am

## B & Q We Could Do It

Around about last March I saw in the Cornishman newspaper that the DIY store had an awards scheme called "B & Q You Can Do It". This made materials worth up to £5,000 available to community groups to improve places in their town. As I am a member of Hayle in Bloom, I applied on their behalf after consulting with the Town Clerk, and submitted a plan (with drawings by Bob Mims) to brighten up the area in and around the Swimming Pool.

I heard no more until June, when I got a letter saying we were on the short list and the judges were coming to look at the project. Our Chairman Marjorie Roberts and I met with the judges and then we had to wait for



the result. I still didn't think we would win, as there were 2,000 applicants, but we did! We got £2,500 of materials, not the money, and had to do all the work ourselves. Hayle Town Council and Hayle Harbour Co. gave permission and we set to.

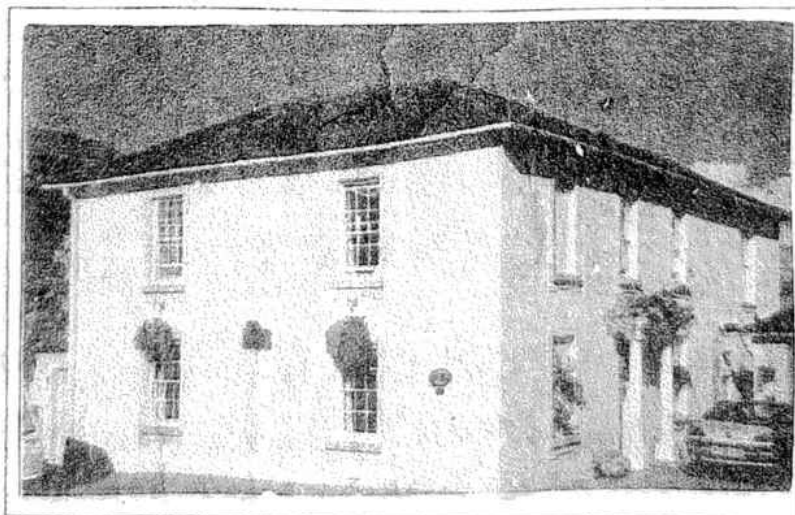
Many many thanks to Chris Lello, without his help it would have taken ten times as long. He also donated

## CRANFORD HOUSE BED & BREAKFAST OPEN ALL YEAR—CHILDREN WELCOME

*ALL ROOMS  
EN-SUITE*

*NON  
SMOKING*

*OFF ROAD  
PARKING*



*LUXURY  
HOLIDAY  
APARTMENT  
TO LET*

**PETER & PEGGY DARLOW**

**01736 752618**

Foundry Hill \* Hayle \* Cornwall \* TR27 4HW  
cranford-guesthouse@talkgas.net

the top soil used in the flower-beds, truly a generous man.

I have to thank my long-suffering husband Jeff( who has forbidden me to do anything more ever again), as he had to do all the labouring, John Coombe who has worked tirelessly and so willingly, Lorna Coombe who gave up hours of her time to help paint the swimming pool fence, Pat Humphries, Richard Dungey, John Bennett and Richard Horwell who have all pitched in to help. Thanks to Malcolm Stephens of Multisigns, who has done such a lot for our town.

Thank you to Ray Wyse of Bigglestons who has fixed up the CCTV camera. Also to Michael Kemp for his help and advice. And not forgetting Paradise Park who very generously gave us some lovely plants.

Now at last it's finished, and I do

hope you all like it.

*Sarah Turk*

p.s. The new flowerbeds have been "adopted" by Geoff & Michaela Smith and the Baha'i Children's Group.

p.p.s. *One of our Hayle in Bloom members has only a very small garden – is there anyone who has one that is too large for them to manage, and would let him use a part to grow vegetables? You can phone me on 01736 752319 and I will pass on your message.* Sarah Turk

## **THE ENERGY STUDIO**

Carly has opened her new energy studio at Unit 18, Pratts Market – upstairs. Carly specialises in de-stressing and relaxation thera-

Tel. 01736 752119      open 10.30/1.00pm & 2.00/5.00pm  
Mob. 07730 733263      seven days a week

# **TREVASSACK NURSERIES GARDEN CENTRE HIGHLANES HAYLE**

*Christmas trees fresh cut 4ft—16ft from £5.00*

*Noble non drop from £13.00. Holly wreaths*

*Primroses \* Pansies\* Violas*

*Wooden troughs\* Log edging\* Decorative baskets*

*Sundries\* Glazed Pots\* Shrubs etc.*

pies including Plexus Bio-Energy, Reiki and Thermo Auricular Therapy. Drop in for an appointment, or telephone Carly on 01736 793505, or text 0774583021.



**Lest We Forget**

## **The Royal British Legion Hayle Branch**

The month of November for the Royal British Legion is one of Remembrance. This year the service will be held at St. Elwyn's Church on Sunday 13<sup>th</sup> November at 9.30am. Afterwards the assembled gathering of the Town Mayor, Councillors and the many supportive organizations will be led by the Hayle Town Band to the War Memorial for a short service of dedication, and the laying of wreaths will take place. Members of the public are also invited to join with us for refreshments at the AFC/ATC Drill Hall.

The Garden of Remembrance which is situated outside the Passmore Edwards Institute will also be available for members of the public should they wish to place a Poppy or a small wooden cross in the garden. These items will be freely available from a box attached to the Remembrance Board during the month of November.

For poppy collectors and further information contact Mr. Alan Conquest tel: 01736 754521

*W.G. Lewis, Secretary*



## **O'DELL SIGNS**

OF ALL TYPES  
Signwriting, Perspex  
Plastic, Engraved,  
Magnetic, Posters,  
Illuminated signs,  
COMPUTER CUT  
VINYL LETTERING  
for Vehicles & Signs

*Embroidery*  
for  
Businesses & Clubs

**HAYLE 01736 753656**

1, Turnpike Road, Connor Downs.

## **The Coming of The Light The Phillack**

**Miracle/ Mystery Play**

Written by Christopher Berry

*Directed by Ann Foreman*



Phillack Church, Hayle  
7.30pm 11<sup>th</sup>/ 12<sup>th</sup> November 2005

£4.00 (children £2.00) on the door  
*(including refreshments)*

Advance programmes available at  
Hayle Library (01736 753196) from  
1<sup>st</sup> November.

# SINGER & PFAFF SEWING CENTRE

Mr & Mrs D.M. Girling

*Authorised Singer Service  
Centre for Cornwall*

**ALL MAKES SERVICED**

**11 JOHN STREET  
TRURO  
01872 225168**

New & reconditioned machines  
always available.

## Did You Know?

Hayle Model Boat Club was formed by just two Hayle men in 1969, Les Blewett (now deceased) and Les Trathen and the club is still going strong after all these years.

The club members meet every Wednesday at 7pm and Sunday at 10am. They can be found sailing their superb models in the Millpond, why not come and see? Should you wish to learn more or even join us, you will be given a warm welcome at our club house, which is the green building on King George V Memorial Walk, opposite Hayle Swimming Pool.

Subscription rates are only £20.00 per annum of which £5.00 is for third party model insurance. Junior members are £5.00 per annum.

For your subs you get the free use of a well equipped workshop and the friendly advice (if required) of our more knowledgeable members.

During the summer months we attend several model shows and country fairs with our portable pool, on which we operate 'have-a-go' boats, raising money for local charities.

Remember, there are no age limits!  
*Hayle Model Boat Club*

## HAYLE TWINNING ASSOCIATION PORDIC VISIT

Our Brittany journey started on Friday 9<sup>th</sup> September with the very scenic journey into Morlaix along the old Corniche route. This runs along the river which goes into the town centre. We alighted immediately under the town's famous viaduct, which gave our first-timers a chance to look around and explore the older part of town. After dinner it was on to Pordic to meet old and new friends. In the tourism office there was a display of Penwith posters, and photographs of Hayle and places of interest to which we have taken our Pordic friends in past years. It was a short distance to the Ville Robert for our welcome from Guy Fonteix, the Maire. Cllr. John Coombe presented a lovely print by Mervyn Sullivan of Hayle Harbour with the old power station in the background, which was very warmly received. The president of Pordic Jumelage, Claire Denton, then gave her welcoming speech, and her warm words were echoed by the Chairman of Hayle Twinning, who

observed that the links of the chain tying the two towns together were so strong they must have been forged at Hayle by Harvey & Co.!

On Saturday morning some of us visited the St Brieuc market, others were shown around the coast by their host families. In the afternoon we went to the town of Lanueux, Boutville, right beside the sea; here we had a picnic and then went to the old briquetterie. We saw the old brick-making kilns and all of the descriptive pictures; then we had a short ride on the old St. Brieuc to Paimpol railway line which is a part of the area's history museum.

The evening meal at La Ville Guyomard was attended by about 100 people, which gave everyone a chance to catch up with those friends

who had been otherwise engaged. After an excellent meal we were entertained by 3 young lady musicians playing traditional Breton music, with time left to dance the night away.

On Sunday morning some went for a leisurely walk around the Pordic coast line, a very small part of the Baie of St Brieuc. Every year at this time St Brieuc hosts a different national festival and this year it was a Chinese festival, which was huge fun. Some of our party went instead to Ploeuc-Sur-Lie, which holds an annual potato festival, with several traditional bands, dancing in the street and all the fun of the fair.

Back in Pordic, at the Boulo-drome, there was a Breton boules match, and everyone had a good laugh and a refreshing drink. The

## **MURTS TELEVISION**

### **32 PENPOL TERRACE**

01736

**REPAIRS**

752269

**RENTALS**

**SALES**

**BARGAIN-SECOND HAND 20/21"  
TELEVISION FROM £50.00**

**AGENTS FOR ROBERTS RADIO  
RADIO/CD PLAYERS - CLOCK RADIO  
BEFORE YOU BUY GIVE US A TRY**

# JOLLY BODGER WAREHOUSE

77 FORE ST  
HAYLE  
01736 752091



**WE STOCK:**  
**BLACKFRIARS  
PAINTS &  
PRODUCTS.**  
**FLO GAS**  
**CAMPING GAZ..**  
**HARDWARE,**

**GIFTS & SOUVENIRS**  
**AND MUCH MUCH MORE!**  
**\*HOUSE & CAR KEYS CUT\***

evening was spent with our host families.

Monday morning and it was time to say goodbye until next year. We arrived back in Hayle on Monday 12<sup>th</sup> September at about 11.45pm, everyone tired but happy after another very successful twinning exchange, and with special thanks to our coach driver Steve.

If you have enjoyed reading this and would like to join us then please give me a call; next year's visit from Pordic will be around May 25<sup>th</sup>.

On Saturday November 19<sup>th</sup> we are running a shopping trip to Taunton. £14 per person.

*Maurice Trathen 01736 753341.*

## MASSED CORNISH CHOIRS TO SALUTE SURF LIFE SAVING

On Saturday 8<sup>th</sup> October at 7pm all parts of Cornwall will be represented at a charity concert in Truro Cathedral.

This is to celebrate 50 years of SURF LIFE SAVING GREAT BRITAIN- providing voluntary lifeguard services on the nation's beaches.

The concert will reflect the music of the last fifty years - from the post war years when surf life saving was in its infancy and the first club formed at Bude in 1953. With the Polperro Fishermen's Choir and the Newquay, Rame, Marazion Apollo and Lisskerrett Male Voice Choirs along with the Restormel Concert Band, Jonathan Delbridge (Organ), Merv Davey (Piper) and dancers, it promises to be an excellent evening's entertainment. The evening will end with a Dedication by the Bishop of St Germans, the Rt. Revd. Roy Screech.

It is a great opportunity for the public to express its gratitude for the voluntary work undertaken by Surf Life Saving's volunteer lifeguards. Tickets are available from the office in Exeter (08700 753 911) or at the door priced £10 and £8.

**Bob Bates, Vice Chairman, Surf Life Saving Great Britain**

\*\*\*\*\*

Cornish Language Classes at the  
Passmore Edwards Institute  
starting dreckly.  
(7pm Monday 17<sup>th</sup> October)

## CRAFT AND COLLECTABLES IN PHILLACK CHURCH HALL

For those extra- special gifts or that much sought- after piece for your collection, why not make a leisurely visit to see our extensive range of interesting Crafts and collectables?

Following on from the success of the Fairs at Phillack Church Hall over the summer, Gill Hollyn and Graham Whitford in conjunction with local artists, craftspeople and collectors have organised more Fairs to be held on Fridays during the autumn , culminating in a bumper Christmas Fair.

The Fairs will be open from 10am to 3pm on each of the following dates

**7 October**

**14 October**

**28 October**

And the super duper bumper  
**CHRISTMAS SPECIAL**

**16 December**

**Admission will be free**

Gill and Graham can be contacted  
on-01736 350724 or 0797 400 0747



### HAYLE BRANCH RNLI

Is looking for three people to fill the following positions: treasurer, box secretary, and honorary secretary.

If you can help, please contact chairperson Shirley Hayes on 01736 754023

There has been an RNLI branch in Hayle since the 1970s, please don't let it close.

# Des Button

Springfield  
33 Clifton Terrace  
HAYLE TR27 4BP

01736 753211  
0778 868 2076

ELECTRICAL  
SERVICES &  
SUPPLIES

**Part P  
Registered**



**NEIL WADE**  
**MOTOR ENGINEER**  
CENTRAL GARAGE  
10A HAYLE TERRACE  
HAYLE

**M.O.T. TESTING STATION**  
**DIESELS & CATALYSTS**  
**TESTED\***  
**SERVICING\*REPAIRS\***  
**WHEEL BALANCING\***  
**EXHAUSTS\*TRACKING\***  
**TYRES\*BATTERIES**

HOME: 01209 610651  
MOBILE: 07990 981546  
WORK: 01736 756512



## Diary Dates

Full details appear in relevant articles.

### In October :

- 2<sup>nd</sup> Harvest Festival St Elwyn's
- 5<sup>th</sup> Guided walk RSPB
- 7<sup>th</sup> Lights Quiz Night at Rugby Club
- 8<sup>th</sup> St. Elwyn's Dedication
- 8<sup>th</sup> Cornish Choirs/Surf Life Saving
- 9<sup>th</sup> Mayor's Walk for St. Julia's
- 13<sup>th</sup> Hawkins Referendum
- 14<sup>th</sup> Kris Gayle at the Watermill
- 16<sup>th</sup> Newlyn Male Voice Choir
- 17<sup>th</sup> Bird Watch at the hide
- 18<sup>th</sup> – 28<sup>th</sup> Art Show St Elwyn's
- 25<sup>th</sup> Beetle Drive at Day Care Centre
- 30<sup>th</sup> RSPB clean-up

### November

- 1<sup>st</sup> Bodriggy Auction
- 2<sup>nd</sup> & 3<sup>rd</sup> Blood Donor Sessions
- 4<sup>th</sup> Hayle RFC Fireworks
- 11<sup>th</sup> & 12<sup>th</sup> Phillack Mystery Play
- 13<sup>th</sup> Royal British Legion Service
- 19<sup>th</sup> Hayle Twinning Shopping Trip
- 25<sup>th</sup> Kris Gayle at the Watermill

## Pratt's Market

Units to let

Very competitive Rent

Contact Andrew  
In BK Video, Pratt's  
Market  
Tel. 01736 755277



## Family Law Specialists

Divorce & Separation  
Financial & Property Disputes  
Children  
Domestic Violence Injunctions

*For a FREE initial interview*

Call Antony Vingoe on  
01736 752424

Solicitors Family Law Assoc. Accredited Specialist  
Law Society Family Panel Member

## Swan song

I've been putting pen to paper for a very long time

Writing articles, keeping diaries, expressing my thoughts in rhyme  
However, now I'm going to change my ways

And for the remainder of my days  
Catch up with the many works of those

Who have written far superior prose  
The 'Pump' has accepted my efforts over quite a lengthy spell  
But now it's time to bid the team a very fond farewell.

*Yorkie*

(Ed. Note: Many thanks to Yorkie for her many much-appreciated contributions over the years – we will all miss her!)

INDEX OF ADVERTISERS

All Aerials...10  
 Angove Sports...28\*  
 Barton Print...17  
 Biggleston's...40\*  
 Biz & Bytes...27  
 Brookvale...17  
 Button, Des...37  
 Chatter of Choughs...3  
 Colin's M'ket Garden...26\*  
 Country Skittles...25  
 Cranford House B & B...31  
 Dyer, Treve (accountant)...25  
 Dylan's Café...5 \*  
 Farm Shop...11\*  
 Fernleigh B & B...9  
 First Stop (Gardens)...13

Footsteps...23\*  
 Framecraft...24  
 Fresh Approach...7  
 Goldstephen Nursery...22  
 Hayes, Roy...18  
 Hayle Holistic Clinic...39\*  
 Head to Tail...14  
 House Exchange...9  
 J C Electrical...16  
 Jolly Bodger...36\*  
 Keast, F.L...23\*  
 Lello, Terry...30  
 Logs by the Load...15  
 Moyse, David...29 \*  
 Murt's TV...35\*

O'Dell Signs...33\*  
 Orchard, Alan...27  
 Penpol Garage...4  
 Philp's Pasties...19  
 Roadcraft...14  
 Safeclean...6  
 Silverwinds...12  
 Singer & Pfaff...34  
 Smithy's Tool Hire...40  
 Thurstan Hosking...11 & 38  
 Trevassack Nurseries...32 \*  
 Wade, Neil...37  
 W.D.S. Wills...28  
 Westone...8\*  
 Winn, W.J...24

*You can pick up a copy of the Pump at those advertisers marked with a \* also at Hayle Library, Day Care Centre, Community Centre, Bodriggy Health Centre, Copperhouse P.O., Forbuoys, St. Erth P.O., Connor Downs P.O., and many other places in Hayle.*



# Hayle Holistic Beauty Clinic

FOR INDIVIDUALISED BEAUTY AND  
 SPECIALISED COSMETIC TREATMENT BY  
 AWARD WINNING "RAMA"

All beauty treatments by award winning therapist.  
 Specialised cosmetic treatments.  
 Collagen, Botox Injections, Thread Vein treatments.  
 Gift Vouchers . Free Consultation.  
 Special rates for Senior Citizens & School Children.

01736  
 755656

# BIGGLESTONS

TRADING IN HAYLE FOR OVER 100 YEARS

Please try us first for the best of Hardware,  
Ironmongery, Kitchenware, Paraffin  
and Garden Supplies.

01736 752219

*Summer, Autumn, Winter, Spring  
We can supply 'most everything*

PLEASE SUPPORT LOCAL TRADERS

## SMITHY'S TOOL HIRE & SALES

*Hire tools for trade & DIY*

**Unit N, St Erth Industrial Estate**

*Your local independent tool hire shop offering you the best  
in hire rates, backed up by a service second to none.*

- |               |                                     |                            |
|---------------|-------------------------------------|----------------------------|
| *Mini-Digger  | *Stihl Saws                         | *Work Top Jigs             |
| *Mixers       | *Acrow Props                        | *Rotovators                |
| *Compactors   | *Alloy Towers                       | *Carpet Cleaners           |
| *Trestles     | *Roof Ladders                       | *Pressure Washers          |
| *Shredders    | *Floor Sanders                      | *Steam Wallpaper Strippers |
| *Power Barrow | *Petrol Strimmers/<br>Hedgetrimmers | *Block Splitters           |
| *Breakers     |                                     | ....AND LOTS MORE!         |

**RING US NOW ON:**

**01736 757277**