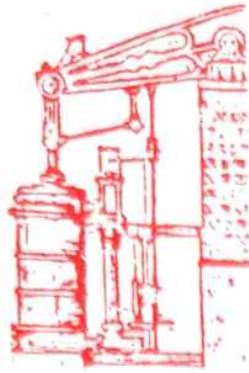


ISSUE 7
CHRISTMAS 95
STILL
FREE!

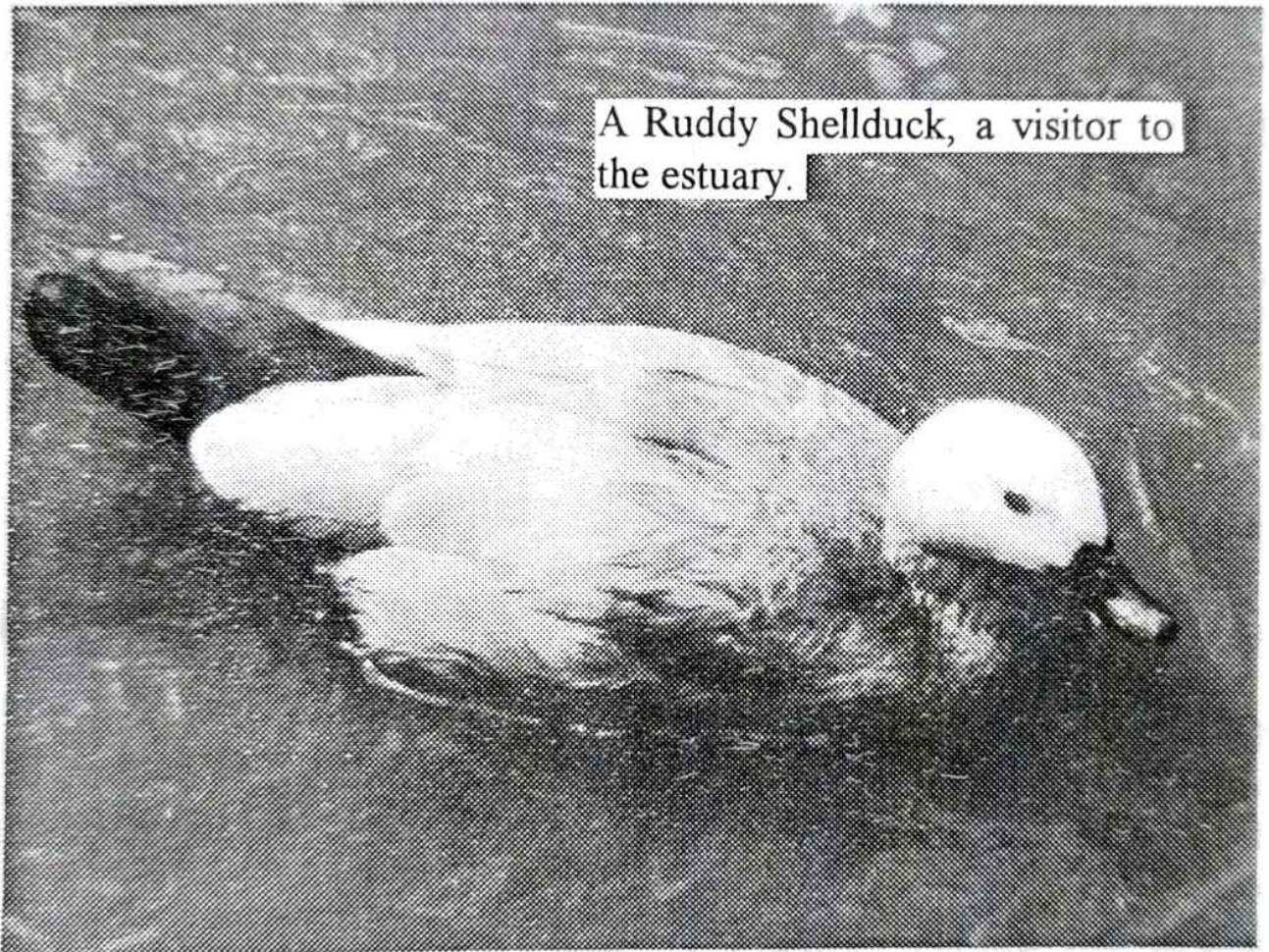


HAYLE

PUMP

NEWSLETTER

A Ruddy Shelduck, a visitor to the estuary.



Introducing the first in a regular series of features on bird-watching in and around Hayle.

WATCH THE BIRDIES!

With Hayle being surrounded by water there are few better places in Cornwall to see so many varieties of birds. They see it as

a great place to stay, especially during the winter, to feed, rest and preen. Many migratory birds, some rare, may drop in for a short while, attracting many bird-watchers from around the country.

Species of birds which maybe seen include various types of

Gulls, Auks, Waterfowl, Grebes, divers and herons. Don't forget to also look around the surrounding hedges, trees and rocks for birds of these habitats. There are so many spots to look:- Lelant Saltings, the Estuary, Carnsew Pool (the Weir), the harbour, Millpond, Copperhouse Pool, Hayle and Gwithian Towans.

This regular report will feature some of the more unusual types of birds which have called in, but no doubt some annual visitors will also be mentioned. As well as looking for birds I also try to photograph them, so hopefully, if my patience persists, I can include some with the report. The bird sightings I'm about to list have been seen over the past few months but remember that many of them don't stay for long. The Estuary now has it's annual winter flocks of Lapwing, Golden Plover, Wigeon and Teal. These often spread through Copperhouse Pool. Look out for various plovers, sandpipers and possibly Bar-tailed and Black-tailed Godwits. Carnsew Pool is the place to see divers, though at the time of writing only one has appeared, a Red Throated. It's likely the Great Northern and, possibly, the Black Throated will arrive

The Hayle Pump team
would like to wish
you all
a very ~~Merry~~ **Merry Christmas**
and a Happy New Year

Pump Editorial Team

Jayne Haydon
c/o SPAR Shop, Foundry
Tel: 75 3327

Maurice Harvey
c/o The Project Office, Carew
House, 58 Queensway.
Tel: 75 5044

Tim Appleton
c/o The Project Office

John & Margaret Perkins
4 Pools Court
Tel: 75 6604

Sarah & Jeff Turk
Hayle Cycles
36 Penpol Terrace
Tel: 75 3825

You can leave news, views,
pictures, articles, etc, etc,
with any of the above team.

shortly. Three Ruddy Shelduck
have been seen at both Carnsew
and the Estuary. A female
Goldeneye duck has been
glimpsed between it's dives on
the Lelant side of the Weir.
Small numbers of Little Egrets

make appearances throughout the area, as does the splendid kingfisher, and a pair have been present in Hayle for many years but because of their speed and shyness few people get to see them. One day, after realising I was not getting spots in front of my eyes, I also sighted a Spotted Redshank at Copperhouse Pool, near the car park.

The Millpond is another great place to see birds, and not only in the water. Firecrests, along with Goldcrests are Europe's smallest bird, the Firecrest being found only in southern England, including the Millpond. It will take a lot of patience and looking to find it in the cover of the trees and bushes. Redwings and blackcaps have also been spotted along the walks of the Millpond. The pond itself is now home to four Muscovy ducks after they were found squatting on the pavement opposite the Whitehart Hotel. A beautiful male Pochard duck made a few visits to the pond but now seems to have moved on. A very illusive Water Rail was also spotted leaving its cover for just a few seconds. Finally, I'll mention a stealthy Sparrowhawk which has been getting many a catch at the Millpond and Carnsew area.

Within the next months many more birds should make visits, so keep your eyes peeled as often as you can, but remember, even the best bird-watchers sometimes fail to catch the best sights!

Colin Polkinghorne

DISCO

for

**Christmas
HAYLE YOUTH CLUB**

22nd December

7 - 10pm

Tickets 50p

On Sale Now

ANGOVE SPORTS

COPPERHOUSE, HAYLE
Tel: (0736) 752238

FOR ALL
SPORTS EQUIPMENT
CLOTHING, FOOTWEAR
AND FISHING TACKLE

**RACKETS REPAIRED
AND RESTRUNG**

**COUNCILLOR JOHN
POLLARD.**

A PERSONAL PROFILE.

What an opportunity!!

The man on the phone said "The Pump needs 250 words about you, written by you".

What a gift! The by tomorrow was a bit of a downer but otherwise this was a chance not to be missed - what image shall I create? Churchill? Napoleon? Saint? Leader? rogue? In the end of course I can only try to tell it as I see it, stand by my record and hope that the people see me as I believe I

am. Someone who is trying to give something to the community by working to create a better Hayle for everyone.

I am aged 46. I was brought up in Hayle but spent 12 years in exile in England (Coventry) at college and teaching before returning home in 1980.

I am married to Jean, who teaches at Connors Downs Primary, have two sons Simon (16) and Matthew (13). I am Deputy Head of Humphry Davy School, Penzance.

Soon after I returned to Hayle, I went to one of those

THE ARK

24, FORE SREET, HAYLE.

MAGAZINES & NEWSPAPERS

**SUPPORT YOUR
LOCAL INDEPENDENT TRADERS.**

We will deliver your newspapers & magazines daily, for just 5p per day.....We deliver reliably & couteously....daily,weekends, or just odd days....We can reserve your newspapers & magazines for you to collect, (no charge).....We stock the largest range of magazines in Hayle.....If we do not have a magazine in stock, we can normally order it for you.....

For delivery next day....

Call or phone (01736) 753106

"what can we do with Hayle?" meeting, which happen periodically. As the discussion continued I became increasingly frustrated that the answer seemed to belittle!

When a casual vacancy on the Council arose in 1982 I stood, and won and became



even more frustrated! But if we don't try, nothing will change and we will have only ourselves to blame.

I was honoured to be Mayor from 1986-1988 and privileged to chair the campaign against the sewage outfall. The people of the area did make a difference and the existing system is much better than the original plans. If only we could persuade SWW to add a tertiary

treatment we would have a totally safe system.

Hayle is a wonderful place to live in, it is full of activity and people creating a vibrant living community - if only we could gain ownership of the Harbour then commercial, environmental and social improvement at the very heart of the town would be a reality. It is only those who have the money - Penwith, County, Westminster and Brussels get together and give the Quays and surrounding areas to the town will real sympathetic change happen. As long as I am on the Council

.....
•••••
••••• **For a wide range of** •••••
••••• **Toys and Games** •••••
••••• **this Christmas,** •••••



come to



••••• **BLEWETTS** •••••
••••• **OF HAYLE** •••••

••••• **19 Penpol Terrace** •••••
••••• **(01736) 753012** •••••



I will continue to work to this end, I only hope it happens before it is too late.

HAYLE CHAMBER of COMMERCE

The market currently operating every Wednesday on South Quay has been the subject of much discussion

Prior to this market appearing on the scene, the Chamber was examining the possibility of establishing a 'a one day a week' street market within Hayle.

The Chamber's policy is that this can only be good for Hayle and it's business community.

The Chamber is acutely aware that only a minority of businesses in Hayle are Chamber Members. As this issue is of great importance

mainly to all the businesses fronting on to the road through Hayle, it was decided to ask their opinion, whether they are Chamber Members or not.

They were asked to state if they were for or against a street market on one day a week.

The results of this survey are as follows:

	In fav	Agnst.	Undec
Foundry.	13	5	1
Cop/hse	17	14	3
Total	30	19	4

A total of 53 of 53 questionnaires were received.

This means the business community wants a street market one day a week.

What also came out of discussions with these businesses is their almost unanimous dislike of the current market as it organised.

The type of market envis-



Barbour®

The best British Clothing for the worst British weather



People who know the country
know they need
country clothing

They need the highest
possible standard of
durability,
abrasion resistance,
warmth
and protection
under the worst conditions.

They need a
Barbour

Do you?

Come and see the famous
Barbour range at

David Moyse
COPPERHOUSE

Hayle
01736 - 75 2053

Where quality and service still count

aged by the Chamber, would be sited to allow people to have easy access to both the market and the shops.

The revenue generated from the letting of stalls would go to Hayle Town Council. This cash would then fund small projects throughout the town benefiting all and improving Hayle. This is not happening with the present market.

The Chamber will continue to urge the Town Council to organise the setting up of a market day for Hayle so we can all benefit.

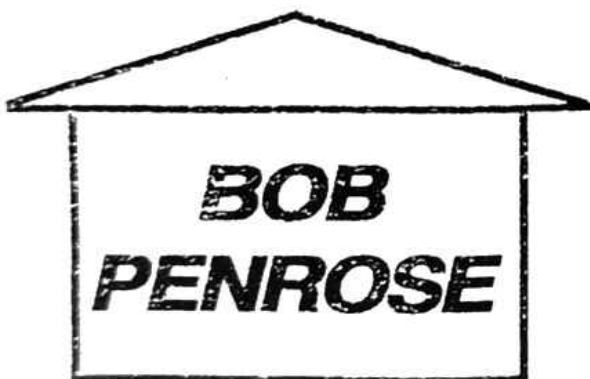
THE CONTINUING STORY OF THE NEWT POND

Pond dipping took place on Thursday 5th October. Mark Nicholson from Cornwall Wildlife Trust, Amanda Hawkins from Tehidy Country Park, and a few volunteers from Loggans Conservation Group.

Mark turned up with all his nets and Flora tubs for collating bugs and grubs and our one newt in the pond! (which were all put back) Since the clearing of the pond and the opening up of the willow scrub the pond is starting to fill with each rain shower and now measures approx. 13 meters.

The removing of the weed is going to be a long term problem but we keep trying. (more volunteers are urgently needed).

As for the mortar bomb that gave LCG so much free publicity Judith Thurman from LCG said a family friend from Swindon read the pond article in the Hayle Pump and said her husband was walking on the beach some six years ago and found this bomb on the beach. Not knowing what to do with the bomb, he says he took it to a local pub adjacent to the Towans and the Landlord, we believe, said, "Get it out of here



property maintenance


**(01736)
757041**

**26 PENPOL TERRACE
HAYLE TR27 4BQ**

right now!" and not wishing to spill any "BLOOD" the Gentleman complied.

He then took the bomb up onto the Towans and threw it into the newt pond!!

A good couple of hours pond dipping was had by all, and the talk by Mark Nicholson, on the type of wildlife we should find in our pond come spring, was very encouraging.

Mike Morris

H.A.D.S.

The Hayle Amateur Dramatic Society would like to give a big vote of thanks to the traders and people of Hayle who kindly donated items for the Jumble Sale and Raffle on Saturday 11th November.

The day raised a total of £176 and, added to the cash donations from Hayle Rugby Club, the Freemasons, and Philips Bakery, our bank balance was boosted to around £270.

At our first AGM, held after rehearsals on 8th November, a committee was duly elected into office. The members are:

Chairman: Ken Townsend BEM

Treasurer: Joanna Butt

Secretary: Dawn Edens

Director: Lin Townsend

Costumes: Janet James

Publicity: Paul Thomas

other members are: Dorothy

and William Vinnicombe, Doris Morton, Mandy Riley, and Caroline & Emma Churcher

Our first production will be held in late February 1996, and rehearsals for "Snow White" (written by Lin Townsend) are in full swing with all parts now cast.

The group are still in need of a piano/keyboard player to help with the many songs to be sung throughout the show, so if anyone can give 2 - 3 hours of their time on a Wednesday evening, please contact Lin or Ken on Hayle 75 4995



The Copperhouse Gift Shop

57, Fore Street, Hayle

For that different gift,
visit us - we hope you will
find us "Present-able"

*An interesting selection of
Personalised Xmas Cards*

PLEASE SUPPORT LOCAL TRADERS



The photograph of "The Jam Pot", cafe on Gwithian Towans and believed to be over 200

years old was taken by Mr. Alf Tugwell, a member of Hayle Camera and Social Club.

HAYLE CAMERA & SOCIAL CLUB

Our club, started nearly ten years ago now. It was at that time called "Hayle Camera Club" until quite soon after, we found that a club of that name had been active for some time before ours. Hayle & District Camera Club, to avoid any confusion, was then our title until January 1995.

Regular monthly meetings held on the third Tuesday of every month - except for the December Christmas Dinner & Awards evening - at 7.30 p.m. include a Competition divided

into four main categories; Advanced, Monochrome, Slides & Exemption. The club now boasts sixteen or more major trophies to be awarded to the winners of these competitions including some special annual ones for Portraits, Portfolios, Table-top, Landscape, Leisure-time, Photographer of the Year and Best Print & Best Slide.

From the above it would seem that the club is all about competitions. Wrong, it does play a part but it is only that, just a part of our activities.

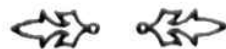
"Social" was introduced into the title simply because this too has a big place in the clubs life.

BIGGLESTONS

TRADING IN HAYLE FOR OVER 100 YEARS
AS A TRADITIONAL IRONMONGER



Please try Bigglestons first for the best
of ironmongery, hardware, kitchenware,
paraffin and garden supplies
available in Hayle.



We wish all our customers
a very Merry Christmas and a Happy New Year!

SUPPORT LOCAL TRADERS

Field Trips/Outings have become a regular feature in our programme. Members and friends meet once a month on a Sunday to travel to a location which can provide not only photo opportunities but also, Lunches, Picnics, Cream teas, etc.,

Long standing members of the club who rarely ever miss a meeting, never take photos,

their enjoyment comes from the social contact involved plus the interest in visiting speakers who present some breathtaking views via projector and screen of people and places far away.

Visits to other members houses and gardens. The introduction to people and places new in our own beautiful county. A Summer social (Meal) at our regular venue; West Cornwall Leisure & Bowling Club in addition to our long standing Christmas "do" gives budding playwrights and/or actors a chance to entertain their friends and fellow members. Guests of honour include personalities from local radio and all walks of life, not always in the realms of photography.

The social activities of our membership play a large and important part in the life of this particular club.

Once described as a nursery for those new to photography. Our club does in fact cater for beginners. We take pleasure in seeing people who claim; "Oh I can never take photographs" - bring their first ever prints onto the competition tables to take a place among the winners that month.

Those of us who develop and print their own film and prints or slides to whatever extent. Not only make great savings in the cost of their hobby but working in a "Darkroom" also brings its own rewards. The creative art involved in the printing of black

ROY HAYES

GLASS

ALL TYPES OF
GLASS SUPPLIED
CUT TO SIZE
OR GLAZED

24HR EMERGENCY

BOARDING-UP SERVICE

CARAVAN WINDOWS

rear CENTRAL GARAGE,
HAYLE TERRACE
HAYLE

HAYLE 75 4023

AFTER HOURS (0736) 752619

and white, tinted/toned or full colour work holds its own fascination for the enthusiast.

The Clubs AGM is set for January 16th 1996. New members are always welcome, the fee at present is £8.00 for a full membership payable at the beginning of the Season or on joining - adjusted later in the year to £5.00.

Visitors can also attend for 60p per meeting. For more detail and other inquiries telephone the Secretary at Hayle (01736) 57725.

Photography reaches anywhere light falls or can be made to fall. Landscapes, micro, portrait, seascape, underwater, aerial, weddings, parades, you name it can be captured. Some are easier than others as a subject but all of it much simpler than most would imagine.

A visit to any camera club could well be of interest to anyone thinking of this as a hobby or just to discover their own capability. Any age, may join/visit. Eight to eighty plus, if you consider coming to see us contact Hayle Camera & Social Club. Arlene Rew Hon Sec HC&SC. 1/10/95

HAYLE ROSE & CABBAGE HORTICULTURAL SOCIETY

Meeting held at Phillack
Church Hall, 19th October

Mr. Hubert Prosser, Chairman, welcomed all who were in attendance and then went on to introduce Mr D Flumm of the RSPB to give his talk on Hayle Estuary Birds and Developments.

Mr. Flumm first spoke of the parcel of land that the RSPB had been able to purchase on the south side of the Causeway behind the garage. This land was originally part of the salt marsh but was allowed to dry



0736 754244

0736 75 5128

Quality Original Paintings
and Prints by
Local Artists

A wide selection of
local views
Commissions taken

Open 9am - 5pm

HAYLE SHOPPING ARCADE

(Upstairs)

Chapel Terrace
Foundry Square

out and become agricultural land after the construction of the Causeway in 1929. The plan now was to revert this land back to salt marsh with a centre lagoon and islands in order to attract estuary birds to nest and breed there. A car park for some 80 cars had been constructed with the preliminary works to attract visitors and also screened footpaths that enabled the visitors to see the birds without disturbing them. They hoped to build a hide in due course. He had several slides showing the

development so far. He said that whilst they had control of the mud flats in the estuary, they did not own any land around the mud flats to erect any hides or to conduct any tours, though at present, they did have permission from several owners around the flats for this latter purpose. He then carried on with his talk on estuary birds indicating the residents and migrants and explaining where they come from and where they are going to and numbers involved. Hayle being a very important staging post for

HAYLE ELECTRONIC SERVICES

**HAYLE SHOPPING ARCADE • CHAPEL TERRACE
TEL/FAX: (0736) 75 4244**

*** * TV, VIDEO & SATELLITE REPAIRS * ***
**HAYLE'S LARGEST SELECTION OF VAC BAGS,
DOMESTIC SPARES, LAMPS, TUBES,
AND ELECTRICAL EQUIPMENT**

TALKLAND MOBILE PHONE DISTRIBUTOR
VODAPHONE & CELLNET = BEST DEALS

EURONET * * * *

VODAPHONE



these birds. There was much more activity during the winter months rather than summer and therefore much more attractive to the "Twitchers" who help to extend the holiday season.

Mr. Prosser thanked Mr. Flumm for a very interesting and informative talk which was fully supported by the audience.

Meeting at Phillack Church Hall on 16th November 1995

Mr. Hubert Prosser, Chairman, welcomed all present and reminded them of the Annual Dinner to be held on 7th December 1995 and put out the list for members to make their choice of main course, coach pick-up point etc. He reported that flowers had been sent to Mrs. Pearce, the wife of our president, Mr. Bill Pearce on account of her illness. A Diamond Wedding anniversary card had also been sent to Henry & Ida Hollow, now living in Saltash, who were founder members and Henry was club president for many years. He also reported that the Autumn Show had more entries than last year but takings were lower though a financial surplus was achieved. He then introduced Mr. Ray Adley to give his talk

on Dahlias.

Mr. Adley stated that he really got interested in dahlias after he finished his 35 years service in the navy and was now very much an enthusiast. He started by discussing the types of dahlias and their classification with respect to size of bloom and had a set of rings to illustrate the point. From here he went on to growing them, the need to reduce the number of branch shoots to obtain good blooms and the feeding. Here he stressed the point that they are surface feeders so top dressing is the order of the day with copious quantities of water to prevent them from drying out. No weeding with a hoe around the plant to prevent damage to the surface roots. He then covered winter storage, propagation by cuttings, division of the tuber and seed, here he brought in some tubers and seed heads to demonstrate and show what to

GOOD AS NEW
Dress Agency

*Selection of Good Quality Clothes
for Adults and Children*

Fashion Jewellery

"RRAPPERS **Rosemary**
HATS " **Rowe**
 75 3919

look for. Next he gave hints and advice on showing and the transport of exhibits to the show. He ended with some slides of different plants in various shows that illustrated what can be achieved.

Mr. Prosser thanked Mr. Adley for a very instructive and interesting talk where his enthusiasm had rubbed off on the audience and was fully supported by those present.

Client: "I want to make a will, but I'm not sure how to do it."
 Solicitor: "Don't worry, just leave everything to me."

HAYLE CYCLES



SARAH and JEFF
 wish everyone in Hayle
 a very Merry Christmas
 and a Happy New Year!

remember....

be safe.... 99
be seen....

SUPPORT YOUR LOCAL TRADERS

member of ACT

The Association of Cycle Traders

We would like to thank Duchy College Garden Centre for the kind donation of plants that have brightened up the public access and exhibition rooms at Carew House.

CHRISTMAS SERVICES AT THE FIVE CHURCHES

ST. ELWYN'S

Thurs Dec 21st 3pm Carol Service
 (Churches together in Hayle area)

Sun Dec 24th (Christmas Eve)
 11am Said Eucharist
 5pm Crib Service & Carols -especially for families
 11.30pm Midnight Mass

Christmas Day
 10am Parish Communion at Phillack - NO SERVICE at St Elwyns

Sun Dec 31st
 10am Parish Eucharist
 NO SERVICE at Phillack

be careful about different times - i.e. 10am.

GWITHIAN

Sun Dec 17th 7.30-9pm Christmas Carols and Songs of Praise at Gwithian Chapel and a great welcome from Wendy and Brian Frost at Gwithian Farm for Mince Pies afterwards

Christmas Eve
 11am Nine Lessons & Carols
 11.30pm Midnight Mass (B)

Christmas Day
 11am Family Holy Communion

New Years Eve
 11am Holy Communion 1662
 11.30pm Watchnight

ST ERTH

Sun Dec 17th 10am Parish Communion and Nativity Play, part 1
 6pm Carol Service

Tue Dec 19th
 7pm Carol Singing
 Christmas Eve
 10am Crib & Carol Service
 11.30pm Midnight Mass

Christmas Day
 8am Holy Communion
 10am Christmas Eucharist & Nativity Play, part 2.
 8pm Candlelit Compline

PHILLACK

Sun Dec 17th 6pm Candlelit Nine Lessons & Carols - Join us in the Old Vestry after the service for Punch & Mince Pies.

Sun Dec 24th (Christmas Eve)
 8am Holy Communion
 9.30am Morning Prayer & Carols
 10.45pm Carols
 11.45pm Midnight Mass

Mon Dec 25th (Christmas Day)
 10am Parish Communion and Carols

Sun Dec 31st 10am Parish Communion at St Elwyns -
 NO SERVICE at Phillack

GWINEAR

Dec 17th 6pm United Carol Service at Wall Chapel

Christmas Eve 11am Children's Nativity Service
 6pm Evening Prayer
 11.15pm Carol Singing in Church
 11.45pm Candlelit Midnight Communion

Christmas Day 10.30am Children's Family Service

New Year's Eve 11am Short Communion
 8am Holy Communion
 11am Family Worship
 6pm Evensong

OTHER SERVICES

Mon 26th Dec (St Stephen)
 9.30am Eucharist at Phillack

Tue 27th Dec (St John)
 10am Eucharist at St Elwyns

Thur 28th Dec (Holy Innocents)
 9.30am Eucharist at St Erth

PLEASE NOTE THAT ST ELWYNS AND PHILLACK ARE UNITING ON CHRISTMAS DAY AND NEW YEAR'S EVE (31st). THIS WAS A SUGGESTION THAT CAME FROM THE CONGREGATIONS AND IS MUCH TO BE APPLAUDED

**PLEASE SUPPORT
 LOCAL TRADERS**

HAYLE LADIES CHOIR

The Hayle Ladies Choir have been formed for eleven years and have given numerous concerts for charity.

The conductor of the Choir is Mr. Leslie Hollow and accompanists Mrs. Maureen Hollow and Mrs. Una Skellington.

Prior to Christmas last year both Hayle Ladies Choir and Hayle Male Voice Choir gave a carol concert for B.B.C. Radio Cornwall at Feock church compered by Nina Davey. A cassette has been made of this concert which is now available from David Moyse, Copperhouse, Peter Hampson, Foundry or members of both choirs price £5.00.

The ladies practice at Ventonleague Methodist Church on Thursday evenings at 7.30. Anyone wishing to join will be made most welcome. Please contact Mrs. Sylvia Bassett (Secretary) Hayle 754311.

Forthcoming events are as follows:-

Sunday 10th December
 Annual carol concert with Hayle Ladies Choir and Hayle Male Voice Choir at Ventonleague Methodist

Church at 7.45pm.

Thursday 21st December

Combined carol concert by Hayle Ladies Choir, Hayle Male Voice Choir and Hayle Town Band at St. Elwyns Church at 7.30pm.

Come listen and enjoy the talent we have in Hayle.

Sheila Richards.

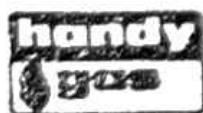
My sister's elderly cat died and her three year old son was very upset. "Can we have another cat?" he asked. "No, Daddy's not very keen on having another one." So can we have another when Daddy's dead?"

THE JOLLY BODGER

75-77 Fore St
HAYLE
(0736) 752091



BLACKFRIARS



TREND

Decor

Hardware - Gifts
and almost anything

PARENTS ARE GOOD ENOUGH - AREN'T THEY?

How to cope with the stresses and strains of bringing up children. Isn't this what most parents worry about at some stage (or even all the time)?

Am I doing the best for my child? How to give the best start in life? We believe that doing our best is good enough - it isn't necessary to be perfect. All that critical advice we sometimes get from others doesn't really help; it just heightens our anxiety and sometimes brings on resentment.

We can learn to improve if we want to by practising our parenting skills in a supportive group of parents. Parents supporting and helping other parents - that is the philosophy of Parent-Link.

So how can we help? Parent-Link Cornwall is the Cornish branch of Parent Network, a registered national charity which was started in 1986 by parents for parents. Our aim is to provide training in parenting skills for all parents (and others caring for children) who wish to improve and maintain good relationships with their children, especially for parents under stress.

The basic course for up to 12 people comprises 13 sessions conducted by a specially trained coordinator. Shorter workshops are also run with specialised aims - for example, working with teenagers. A management committee of unpaid volunteers provides the necessary support for the coordinators as well as publicity, fund-raising, etc.

We follow Parent Network's equal opportunities policy and operate a grant fund to assist parents attend the courses we provide.

You can join the next local group or you can give us support - any parent in

Cornwall can become a member. Donations welcome, of course. Want to know more?

Local contacts:

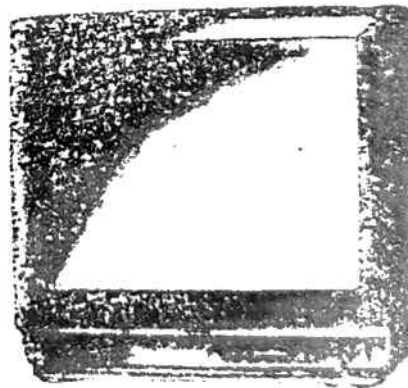
Kate Jasper
10 St Siliven's Chalets
Castle Horneck,
Penzance TR20 8TF
Tel: (01736) 331074

Duncan Thurnell-Read
39 Turnpike Road
Connor Downs
Hayle TR27 5DT
Tel: (01736) 754235

A boy told his friend: "My Mum's a housewife". "mine's not," his friend replied, "she's a domestic engineer and a brat control operative."

SPECIAL RENTAL OFFERS!!

BRAND NEW
21ins Television with Fastext
plus
Long Play Video
with built in VideoPlus+
only £21 per month
3 months initial payment
12 months minimum contract
written details on request



For these and other offers, contact:

(01736) 752269

MURTS TELEVISION, 32 Penpol Terrace, Hayle.

SUPPORT LOCAL TRADERS

STEAMING THROUGH HAYLE

The age of steam was re-lived in Cornwall during a week in October. Two special excursions laid on by Watermans Railways quickly sold out with over 450 passengers on each.

The first from Exeter to Penzance on Saturday October 14th was named "The Duchy Explorer". Sadly, one of two locomotives hauling suffered axle problems and had to terminate at Plymouth. The loco, built in 1939, was a GWR Manor class named "Bradley Manor"-number 7802-from the Severn Valley Railway, Worcestershire.

A mighty British Standard Class was left to pull the 13 coaches through Cornwall, it was the first of the class built, actually being named "Britannia", number 70000. Confusion mounted because she wore the name and number plates of another loco, "Lightning", number 70019 of the same class. It was done to bring back memories of when the engine once pulled the Cornish Riviera Express. The cover-up was not fully effective since Britannia's number

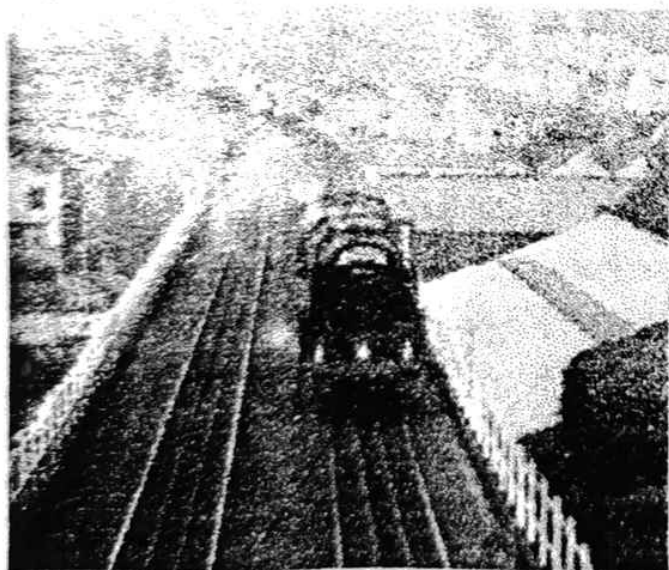
could still be seen on the cab! Further problems occurred near St. Austell, damp leaves on the track caused the loco to slip, there was no option but to call for the assistance of a diesel to push from the rear. The train then pulled into St. Austell station where old-fashioned fire engines awaited to fill her with water.

The huge crowds that turned out in Hayle to watch it pass were getting anxious, she was running over an hour late and the light was fading fast. Patience was rewarded as the train went through just before dark. The famous railway landmarks like the Angarrack and Foundry viaducts were among the most popular viewing points. Hayle and St. Erth stations also saw many people, the old style signals, bridge and signal-box at St. Erth blending in well with the occasion.

While the coaches and passengers went back the same night by diesel, the steam loco stayed at Long Rock for a week. At 8am Friday October 20th it went to the Transrail freight depot at St. Blazey to be turned on Cornwall's only remaining turn-table. She was now taken out of disguise,

wearing her own name and number plates. Late afternoon she came back to Long Rock backwards, ready for the next excursion from Penzance to Bristol.

At 11am Saturday October 21st the loco entered Penzance station wearing service number 635 on the front over her own number. This represented the 10.00am week-day passenger train from Penzance to Paddington, as in the winter time-table of 1957-58. Later a diesel brought the coaches and passengers down, a Class 47 loco painted in GWR green, no. 47519 (D1182). The enthusiasts now



faced the more exciting trip back by steam. Watermans had to negotiate with Railtrack in getting Britannia to head the train, Railtrack wanted the diesel in front, this was only agreed at the last

minute.

This excursion, named "The Cornubian", was also due to be pulled by two steam locos but again the "Bradley Manor" failed to appear. Despite engineers repairing the break-down within 24 hours of it happening, it was said that no steam crews were available to essentially test it. It seems more likely that the "powers that be" have continued the jinx on getting special steam trains to run on the Cornish section of the GWR.

It left Penzance 30 minutes late at 12.50pm with steam

NEIL WADE
MOTOR ENGINEER
CENTRAL GARAGE
10A HAYLE TERRACE
HAYLE

MOT TESTING STATION



- * Servicing
- * Repairs
- * Exhausts
- * Tracking
- * Batteries
- * Tyres
- * Wheel balancing

Home: (01736) 754125

Work: (01736) 756512

SUPPORT LOCAL TRADERS

pouring out and plenty of people watching her go. This time the crowds in Hayle saw it much better in full daylight. On her way up through Cornwall she made another stop for water, this time at Par station. People, young and old, were delighted to have a glimpse of the steam era, bringing back many memories, also giving youngsters a sight from history.

DETAILS OF BRITANNIA,
NO. 70000.

BUILT-Derby 1951

CLASS-Britannia 7MT

TYPE- 4-6-2

LOCO WEIGHT- 94 tons

TENDER WEIGHT- 49 tons,

3 cwt.

WATER CAP.- 4250 gallons

COAL CAP.- 7 tons.

A BR Standard locomotive restored to be loaned for main-line operations, otherwise at Didcot, it's owned by the Britannia Locomotive Society.

Colin Polkinghorne.

LET US WELCOME MR & MRS ROWDEN.

Once again, The Hayle Pump Newsletter can welcome, not just newcomers to Hayle but a new business, in fact a Bistro which hopes to tantalise the taste buds of the people of Hayle and the surrounding area.

Simon and Bet have opened a

P N & W K HAMPSON

FAMILY BUTCHER

20 Chapel Terrace, Hayle,
Cornwall, TR27 4AB

Tel: (01736) 75 2427

Homemade Butcher's
Pasties, Pies, Quiche
Hogs Pudding, etc.



**"We will be pleased to meet you
With meat to please you"**

SUPPORT LOCAL TRADERS

Thai food Bistro and Take-away, which will spoil us all for choices.

This is a completely new venture for them. Simon had spent the previous twelve and a half years in the Royal Air Force, tending the needs of helicopters, both abroad and in this country.

He came to the conclusion, that further advancement in the RAF was slender, so decided he had better prospects if he resigned and pushed ahead in "civvy street". He has now been out of the RAF since a year ago last July. Simon first met his wife in Thailand, when he went out there with four or five friends on holiday. He then used to go back to see her whenever funds were available, which roughly meant every six or eight months, which was a marvellous opportunity to learn the Thai language and something about the Thai culture. Outside interests are very restricted at the moment, but he would like to take up canoeing once again.

Bet, who came to this country in 1988, has worked as a chef in Thai restaurants in various places such as Winchester, Southampton, Romsey and Reading. They have a son, Ja-



son aged four and a half, who is attending Brodiggy Nursery school at present, but will be starting full time after Christmas, which Simon hopes will help to tire him out!

Simon's mother and father, who live in Helston, knew that sometime in the future, Simon and Bet would want a property and discovered the present place which had been empty for about 2 years. It appeared to be in a suitable position and at an affordable price, so since last March, a lot of work has been carried out to turn it into a viable proposition. I know, and I am sure that they won't mind me saying so, they have put a lot of effort into the decorating etc. so that Simon and Bet could get the Bistro open and running as soon as possible.

To show their appreciation to everyone who had done any work for them, they laid on superb buffet, with starters of, Spring Rolls, Roast Rib of Pork,

Honeyed Glazed Chicken Wings, Stuffed Chicken Wings, Deep Fried Pork on Bread, all laid out on very decorative platters, followed by, Thai Chicken Curry, Garlic Fried Pork & Peppers, Malay Salad, Yum Spicy Salad and Thai Style Noodles.

The Hayle Pump Newsletter wishes you the best of luck.

design & print

CREATIVE DESIGNERS AND PRINT CONSULTANTS PROMOTING TOURISM

Design & Print Services,
Studio 2, Foundry House,
Foundry Square, Hayle,
Cornwall TR27 4HII
Telephone: (01736) 753638
Fax: (01736) 752444

Kris Gayle's
EAT-IN & TAKE AWAY

Tel: 75-5095
OPEN 9.30 am until 5.30 pm
CLOSED SUNDAYS

homemade soups, puddings
and cakes all cooked on premises

THE SALVATION ARMY

Sunday December 17th
6pm

CHILDREN'S CAROL SERVICE

followed by tea & mince pies
ALL WELCOME

Sunday December 24th
11am

CAROL SERVICE

no evening service

Christmas Day
FAMILY SERVICE

10.30am

Happy Christmas
to you all from
HAYLE SALVATION ARMY

**HAYLE U3A
PROGRESS REPORT**



It is wonderful to observe the response to the formation of the new branch of the University of the Third Age here in Hayle. We now have almost seventy members keen to improve the quality of their retirement years.

Originally I had hoped for at least twenty people to make such a group possible, but with such an overwhelming response, I now feel that the sky is the limit!

The study groups under way are: Exploring Literature, Con-

ervation, Painting/Sketching, French and writing for pleasure. Recreational groups are: Music and Movement, Meandering (gentle walks), Dancing (a mixture of Sequence and Ballroom) and social meetings with speakers. Groups in the 'pipeline' are Family History (genealogy), Bird-Watching, Swimming, Handicrafts and Local History, which we hope to get underway early in the New Year. We will also be holding a Christmas Party on December 14th, when we request that each member bring one plate of

food of their own choice towards the buffet. Entertainment will be provided (our secret weapon), But if any member wishes to entertain us with their own particular talent as well, we would love them to come forward.

I am constantly amazed at the variety of talents amongst our Third - Agers, and already feel that we have amassed enough material to write our own version of a slightly different kind of history of Hayle!

It has been a great relief to have the support and backing of



THE THAI CHEF BISTRO & TAKEAWAY

42, FORE STREET, HAYLE.

Will open for:

CHRISTMAS & NEW YEAR

ON

DECEMBER 24th & 28th - JANUARY 1st. incl.

BOOKINGS TAKEN FOR:

LUNCHESES, DINNERS, BUFFETS & PARTIES.

CHRISTMAS SET MENU AVAILABLE

(01736) 757671

**WE STOCK LOTS OF TOOLS,
SPRAY PAINTS, CYCLE PARTS,
DOMESTIC ELECTRICAL,
MOTOR ACCESSORIES,
VAC BAGS, PAINTS,
OILS, HARDWARE,
ETC,ETC.**

**"IT COSTS NOTHING
TO ASK"**



RAY SCHUBERT

5 Chapel Terrace

HAYLE Cornwall TR27 4AB

Phone/Fax 01736 753550

Hayle Project Office, alongside that of those responsible for the 'Pump Newsletter' (our friendly local rag), and Hayle Council Office. We also owe a lot to Mrs. Thomas, the manageress of the Day Care Centre and all her friendly staff for their kindness. All have been so encouraging.

We still need people to come forward who have special skills that they are prepared to share. You don't need to be qualified - just enthusiasm for your subject

is enough. As Shirley Oliver (our Deputy Mayor) said at our opening meeting "This is a project about people". We share our skills and learn from one another. If more information is needed, please telephone, Hayle 756253 or 755396.

Gwen Bush.

Hayle U3A.

The inquisitive neighbour said: "Tell me Mr Jones, what is your son taking up at university?" 'Space, came the reply.

HAYLE YOUTH CLUB.

A Christmas Disco will be held on December 22nd. 7pm. - 10pm. Tickets 50p. each. On Sale now.

St Elwyn's
next venture is:
A CHRISTMAS MINI-MARKET
Saturday 16th December
at the Church Hall
HOMEMADE CAKES
CHRISTMAS GIFTS
COFFEE & MINCE PIES

HAYLE OLD CORNWALL SOCIETY

The Hayle Old Cornwall Society was formed in 1923 and its first President was the great Henry Jenner who was a Celtic scholar with an international reputation. We are interested in Cornish history, language, dialect and all matters Cornish. We meet at the Passmore Edwards Institute on the first Friday of the month (except January when it is normally the second Friday) at 7.30pm. There is a modest membership fee.

During the rest of the session

KITES FOR ALL AGES
FOR FUN - SPORT - POWER
AT
SKYLINE KITES 
COPPERHOUSE
HAYLE 75 4277

we have the following evening meetings;

Friday 1st. December: Mr R.J. Quixley on "Early Cornish Maps."

Friday 12th. January (Strictly for members only) Social Evening.

Friday 2nd. February: Mr. Kenneth Brown "Famous Hayle Engines."

Friday 1st March: Mr. Michael Tangye "West Cornwall and Scilly." (Illustrated with slides).

Friday 12th. April: Mr. Russell Webber: "The Battle of Bossenden Wood."

Friday 3rd. May: A.G.M.,

after which Mr. Alan Kent and distinguished poets in Cornwall will read from their works.

The Summer programme of pilgrimages to places of interest in Cornwall will be announced later in the session. An important part of the work of Old Cornwall Societies is the recording of objects of historical interest, music, place-names and dialect. Any persons in Hayle and the surrounding district are very welcome to inform myself or any member of the society of anything concerning Hayle's past which has never been recorded and would otherwise be lost to history.

Mr. Cedric Appleby

Prior & Co

FORE STREET COPPERHOUSE

(0736) 75 3368

INSURANCE & MORTGAGE
SPECIALISTS.



MOTOR • PENSIONS
HOUSEHOLD • INVESTMENT
COMMERCIAL •
FINANCIAL PLANNING

PLEASE SUPPORT
LOCAL TRADERS

ALLIANCE

LEICESTER
Local Agent

• FIMBRA DO NOT
REGULATE THESE
PRODUCTS/SERVICES
YOUR HOME IS AT
RISK IF YOU DO
NOT KEEP UP
REPAYMENTS ON
A MORTGAGE OR
OTHER LOAN
SECURED ON IT.

An Appointed
Representative of


DBS

Financial
Management Ltd.


FIMBRA

DISGUISE? ONLY BY A MASK.

A great big thank you should go to the good ladies of "Hayle Children's Library", and also to the pair from the Bedlam Theatre, who put on such a great show for the children of Hayle in their half-term holidays.

It was titled, "Come and make Space Masks for Children".



The children, I think about 40 with their Mums and one Dad, were all really enjoying themselves.

My young friend Sam, aged 3 and a bit, nearly 4, was a bit shy at first and sat on my lap, but after awhile I persuaded him to go and join in with the others.

Rory from the Bedlam Theatre took young Sam under his wing, so with Rory's help Sam made a wonderful mask. Rory and Amy went round to all the children, showing them what to do and how to make the masks. It really was delightful to see so many children with

Des Button

☆☆☆☆

**ELECTRICAL SERVICES
AND
SUPPLIES**



Springfield
33 Clifton Terrace
Hayle
TR27 4BP

HAYLE 753211

their Mums and a Dad joining in it all.

One little girl, too young to make a mask, spent a lot of her time drawing pictures, then, with a great big smile, giving them to me to keep.

It was a great enjoyable hour, well spent.

Name and address supplied.

Anxious passenger: "does this bus go to Bury?" Driver, "No, we're going direct to Bolton."

"But it says via Bolton on the timetable." And it says OMO on the back of the bus, but I don't take in washing."

ST ERTH BOARDING CATTERY



BATTERY MILL LANE
ST ERTH
HAYLE TR27 6JU
HAYLE 754605

BREEDERS OF SIAMESE,
BURMESE & ORIENTALS

KITTENS OFTEN AVAILABLE
FOR SALE

Collection & delivery service available
Inspection invited

LETTER

To the Editor

I read with interest J. Cossons' letter in Issue 6, where the proliferation of disregarded objet-d'art on Hayle North Quay is again brought into question.

As I have had no response to my letter in Newsletter 2 I would like to offer a free Pottery or Painting lesson to the first five volunteers to assist me in clearing up the rubbish,

Volunteers can contact me by phoning : 01736 795078 for details.

Yours Sincerely
John Buchanan.

*Happy Christmas to all our
customers*

ADVERTISING.

Full Page£30.00
(130mm x 195mm)
Half Page.....£17.00
(130mm x 95mm)
Quarter Page.....£9.00
(63mm x 95mm) or
(130mm x 42mm)
Eight Page.....£5.00
(63mm x 42mm)
Sixteenth.....£3.00
(63mm x 20mm)

Letter

May I make use of your paper by informing all ex-servicemen, that a branch of the National Malaya and Borneo Veterans association is being formed in the Penwith and surrounding districts of Cornwall. All servicemen who served in the war , The Malay Emergency, and the Borneo Indonesian Conflict, are eligible, and I would certainly like to hear from them. Some have written to me before when I informed them of the association. I would like to hear from them again, for an application form and details. A stamped addressed envelope would be appreciated.

J. Smith. 20, Calais Rd. St. Erth Praze, Hayle.

The doctors receptionist said I could have an appointment next week. "What if I'm dead by then?" I joked. " You must let us know, so we can fit someone else in," she snapped.

fo!tsteps
for neat feet!

your local shoe shop
for those

Christmas Gifts!

(also agents for dancewear)

Brian Harris

27 Penpol Terrace Tel: 757735

SUNDAY BEST

Over the years Hayle Rugby Club car boot sales have attracted thousands of "sellers and buyers" alike.

To help charities and support local organisations in the town, the club asked people to voluntarily donate twenty pence when they used the club's premises to park their vehicles. This has proved very successful and numerous organisations have benefitted (from the town's war veterans to the surf life-saving club.)

The club now employs security staff to monitor the roads, keep traffic flowing and avoid congestion on the round-about. Up to four security staff are used in the busy summer months and two in the winter. This has proved to be very succesful this summer.

With the club running a cafe from 8.30 onwards and all those bargains to be had, I can think of few better places to pass away a

THE CATS' PROTECTION LEAGUE

(FOUNDED 1927)

Head Office: 17 King's Road, Horsham,
West Sussex RH13 5PN Tel: (01403) 261 947

CHARITY SHOP at 23 PYDAR STREET TRURO

Tel: (01872) 76351

HAYLE CPL: Love Lane

Tel: 75 4852

Please support the League generously
with donations and help

Sunday morning.

So **THREE CHEERS** and
MERRY CHRISTMAS to all
those involved in running the
BEST car boot sale around.

LONG MAY IT CONTINUE !

Name and address supplied.

HAYLE RAMBLERS RECOGNISED NATIONALLY

There are many footpaths around Hayle that give a very nice walk in the countryside without using a car. An excellent short leaflet, written by Brian Sullivan, President of Hayle Old Cornwall Society, gives an

attractive tour through the town's unique industrial past.

Our footpaths are jealously guarded by the local Ramblers' Association, who had Kate Ashbrook, National Chairman, to their AGM in Hayle recently. She was bitter about the failure of Cornwall Highways to devote its limited funds to keeping our footpaths open. She said that, instead of giving more funds to local councils like Hayle, money is being spent on other projects. The law actually states that the maintenance of footpaths must be done first. This is a priority for the local Ramblers Group which was founded in Hayle over 10 years ago in an inauguration at the Passmore Edwards Institute where 84 people attended, and Hayle has always been strongly represented. The Group provides leaders for 140 walks in West Cornwall each year on which all are welcome. A free list is available from the Hayle Project Office, Hayle Library or from the Secretary Shirley Oliver (tel. 752121).

You have a Parish Council who is active on your footpaths, and, with the Parish Paths Partnership Scheme, is getting your local paths opened up.

Our paths are an invaluable

PARENT-LINK

makes you

THINK

**about you, your children
and your families**

**It was started
BY parents FOR parents**

*Why not come along to
a **FREE** introductory talk?
...and find out more!*

Duncan - Hayle 754243

Kate - (01736) 331074

tourist asset-too often visiting families go out for a walk only to find paths are blocked-this will deter them.

Shirley Oliver

HAYLE FLOWER CLUB

AGM held on 25th October at Phillack Church Hall.

Miss Mildred Rogers, Chairman, welcomed the very good number of members who had turned up for the AGM and then proceeded with the meeting.

After the preliminaries, the Officers, Miss Mildred Rogers, Chairman, Mrs. June Dowdall, Secretary and Mrs. Ruth Atterbury-Thomas, Treasurer, gave their respective reports that showed that the club had had a very successful year with good attendances at all their meetings and the steady growth of membership coupled with a healthy financial statement. The proposed programme for the coming year was accepted and every effort would be made to make the "Floral Art Exhibition", planned for the 5th. December, to be a success, being that donations admission will be in aid of the Mermaid Appeal.

The result of the elections are as follows:-

Chairman-Mrs. Ruth Atterbury

Thomas. Vice-Chairman-Mrs. Jennifer Bennetts.

Hon. Treasurer-Mrs. Sheila Sheilds. Hon. Secretary- Mrs. June Dowdall. Programme Secretary- Mrs. Pam Boase.

Committee: Mrs. J. Bransgrove; Mrs. J. Brown; Mrs. G. Danbury; Mrs. R. Firth; Mrs. M. Prosser; Mrs. K. Rogers; Miss M. Rogers and Mrs. W. Thomas.

After the formal part of the meeting, the retiring Chairman, Miss Mildred Rogers, introduced Mr. Peter Horder, Head Gardener of Trengwainton, to give his slide show of National Trust Gardens throughout the country. He showed some superb views and garden designs that produced admiration from the audience. It was a very good end to a productive meeting.

Hubert Prosser.

HAYLE FLOWER CLUB

**Meeting at
Phillack Church Hall
Wednesday 22nd
November**

Mrs Ruth Atterbury-Thomas, Chairman, welcomed a capacity crowd and reminded all about the Floral Art Exhibition at the hall on Dec 5th. and the Annual Dinner at the Penellen Hotel on Dec 7th.

A demonstration by Miss

Fiona Russell followed, with six spectacular Christmas theme exhibits, including a wrapped present in an all-round arrangement that opened to reveal more arrangements inside.

Eileen Murphy thanked Miss Russell, fully endorsed by the audience.

Results -Club Competition for a Seasonal arrangement with Father Christmas were:

Intermediate:

- 1st: Mrs Wendy Thomas
- 2nd: Mrs Beryl Fairfax
- 3rd: Miss Eileen Murphy

Novice:

- 1st: Mrs Sheila Shields

Mrs Wendy Thomas was awarded the Christmas Competition Cup

SMC Prosser
65 Queensway

REMEMBRANCE DAY

As you know, Sunday, 12th. November was Remembrance Day, I was supposed to go as a Councillor, but because I have been quite ill and still am, I thought I would give it a miss. Each year as I have done in the past I bought a poppy.

So on Sunday morning, my wife got our two boys ready to go to represent the Hayle



John Buchanan

Pottery and Painting Holidays

*Daily pottery and painting courses
running now - £20 per day*

*Explore your creativity
- despite the weather!*

Also residential courses Telephone 01736 795078

Clubs, so off they went to the Church Hall.

So to the point, I sat at home till about ten to eleven and I said to my wife, "Let's go down to the service at the War Memorial".

Can I tell you, it was one of the most heart warming things that we have been to for a long time, but also very sad. It touched a place in our hearts that had not been touched for a long time. To see all those people and all the different groups it makes this day so special.

So can I say a 'BIG THANK YOU' to all that made it, and will always make it. A very special day, from now on we shall be part of it.

Can I say to everyone whether they have or have not been before, go to it next year. If I can go on walking sticks so can you. Let's make next years turn-out - the best ever.

Mr & Mrs Cheal.

Letter

Some of the pleasure has gone as I go along Fore Street to do my shopping, because as I go by the shop which used to be Copperhouse Meat, I no longer see the friendly face of

Peter the Butcher, who always gave everyone a smile and wave, no matter who you were.

It's a great shame to see our small family shops disappearing, not forgetting the friendly shopkeepers.

Name and address supplied.

SCHOOL PROJECT

As part of my school work this year I have to do a project.

I have decided to name my project "Hayle-Past, Present and Future" and would be very grateful for any information and pictures relating to Hayle, especially in the past.

If you can help me in any way please phone 753327 or pop into The Spar, Foundry Square. Thankyou.

Alice Haydon aged 11.

WANTED

Any plain remnant materials to make extra banners for Heritage celebrations.

Please contact Jim Wright Hayle 757043 or Elaine Allen Hayle 757497.

Thank you.

"The subject of my sermon today" the vicar said to the congregation, "is the milk of human kindness". A voice at the back called "Condensed, I hope."

COMMISSIONER'S VISIT

On 23rd October, the Project Office played host to a visit of the COMMISSION ON THE FUTURE OF THE VOLUNTARY SECTOR, who were accompanied by officers of the Cornwall Rural Community Council. The Commission will advise the government on various aspects of work in the voluntary sector.

The members enjoyed an exhibition of projects currently working or under consideration in Hayle, with a description of

each from a team member.

This was followed by a discussion with local volunteers about the problems faced by the voluntary sector, particularly from a community-based perspective.

The Commission enjoyed a delicious working buffet lunch, including freshly baked pasties, before continuing on their tour of representatives of the voluntary sector in Cornwall.

WANNABE A D.J.?

Would you like to join a team providing a radio service to St. Michael's Hospital in Hayle?

Duchy Hospital Radio is run on a voluntary basis and they have vacancies for radio presenters, ward visitors and fund-raisers. For further information please send an SAE to:-

Duchy Radio

The Radio Centre

St. Michael's Hospital

Hayle

TR27 4HY

Starting in the next issue of the Hayle Pump we will be printing a schedule of Duchy Radio programmes. This is for the patients at St. Michael's Hospital and the Hayle Pump will be available to all there. Stay tuned for more...



W.J. WINN
FUNERAL AND
CREMATION
DIRECTORS
N.A.F.D.

Private
Chapel of Rest

69 FORE STREET, HAYLE
Telephone Hayle 75 2124

TRENWITH TERRACE, ST IVES
Telephone Penzance 793029

HAYLE PROJECT OFFICE TRUST FORMED

The Hayle Project Office is now a properly constituted Trust, with a Board of Trustees including local and district councillors and others with special expertise in the fields of employment, training and local affairs.

RE-CYCLING PLANT

Hayle could be the site of a recycling plant for West Cornwall. A feasibility study for such a proposal would cost £129,000. It is hoped half this money would be provided by the European Regional Development Fund, while £7,500 would come from the Rural Development Commission. Hayle Town and Cornwall County Councils are also considering a contribution.

The study would involve consultation between councils, planners, technical experts, surveyors, etc. who would look into the suitability of available sites, actual technology needed and the profitability of the scheme.

Atlantic Energy, who are trying to raise the money for

the feasibility study, assured that a "fair chunk of the finance was in place".

The plant, which would recycle household waste, and later possibly some agricultural waste, would cost an estimated £14 million. This money would probably come from the ERDF and private sources. The operation would handle 80,000 tons of a year and save the county council between £300,000 and £500,000 a year on refuse disposal.

Councillor Georgina Schofield said the outcome was "looking promising", but it is thought that the feasibility study alone would take up to nine months to complete and the whole project could take 2 to 3 years in total.

In phase two of the Waste to Energy Project European funding for a Community Organic Composting Plant has also been applied for.

BISHOP'S VISIT

On November 23rd, The Right Reverend Bishop Michael Ball of Truro paid an Ecumenical visit to Hayle in order to carry out confirmations at St Elwyn's.

While he was with us, the

Bishop was the guest of the Town Council at a cream tea in Carew House organised by the Project Office. Guests included our Mayor and Mayoress, Deputy Mayor and Consort, representatives of the District Council, Churches Together in Hayle, Carew House organisations, members of the Project Office and others active in local affairs.

At Carew House, Bishop Michael made a tour of Carew House and was shown some of the many projects going on in the town.

*Happy Christmas to all our
customers*

SWAP SHOP

25 PENPOL TERRACE
HAYLE 01736 757029

15% DISCOUNT OFF OUR
OWN

STOCK DURING
DECEMBER

ON RECEIPT OF THIS
ADVERT

MICK & JO WISH ALL OUR
CUSTOMERS
A HAPPY XMAS
& PEACEFUL
NEW YEAR

HECTORS HIDEAWAY

If you remember, I wasn't feeling very well, and was a little worried that I may have eaten something that had been contaminated when the farmer had been spraying the field.

Thankfully I am still here, as I had thought I had eaten too much, I must admit, I can get a bit greedy at times, well, wouldn't you, if you had been asleep for twelve hours?

I am lucky I can curl up and go to sleep any time if so wish. I don't particularly want to at the moment because I think I could do a lot of good just keeping the countryside healthy, and help keep slugs and caterpillars down, there aren't many caterpillars around at this time of year but there are plenty of juicy slugs, and after all, I've got to build up my strength for when the really cold weather comes.

I have been meandering down the hedgerows, towards the beach - if you had forgotten - the rubbish is awful, I know people don't like to hear about these things, and like to sweep it under the carpet, but I think they ought to know that I nearly died in a plastic bag that somebody had just cast away - for somebody else to pick up.

I can feel sand under foot, the maram grass making me deviate in my course. It's strong stuff but not only does it hold the Towans together, but it harbours lots of little tit bits which are very enjoyable as a starter for my main meal, once I get to the high tide line.

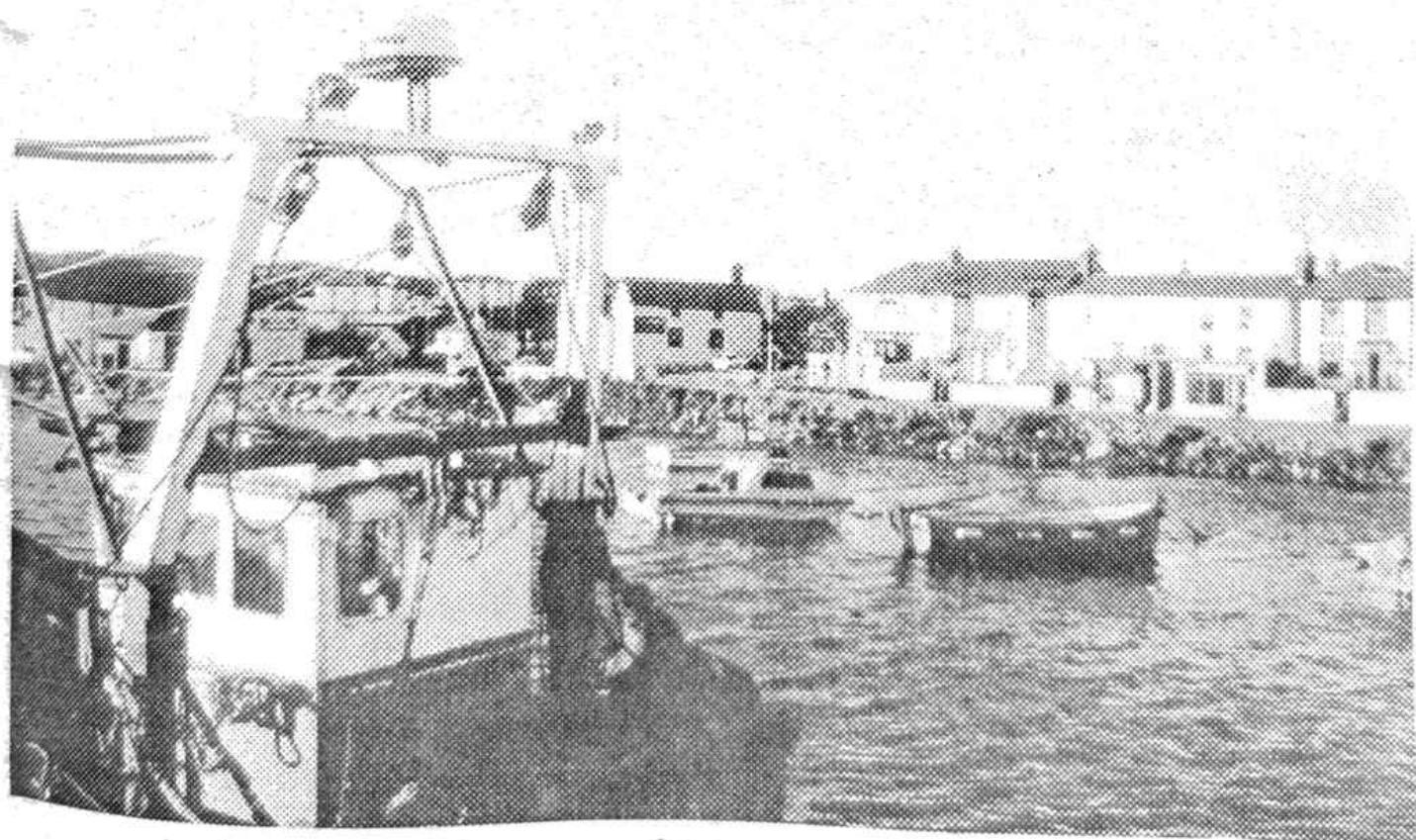
Not many people realise that I can swim, which allows me to forage about in the shallow water looking for shellfish, very tasty, but it is getting a little bit late in the year for me to spend too much time here, it doesn't look as if there is much food

here anyway, I would have been better off earlier in the year.

I think I shall hunt about for a bit, have a snuffle here and there, and then make my way back to that lovely field, there is so much food there, it's almost unbelievable, and more important, I have found some discarded pallets which will be an ideal place for me to snuggle down for the winter, which isn't very far away.

Goodnight for now.

Closing date for contributions for the next issue is 27th.january 1996. Thank you.



❄️ ❄️ ❄️ Merry Christmas, all!! ❄️ ❄️ ❄️

SPAR 

FOUNDRY, HAYLE



**NEWS, MAGAZINES
OFF-LICENCE**



**LOTTERY &
SCRATCHCARDS**

**CHARGE YOUR
SWEB KEYS
&
GAS CARDS**



**OPEN 6.30AM TO 10PM
7 DAYS A WEEK**

TEL: 01736 753327