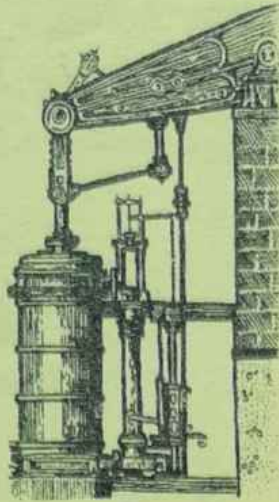


ISSUE 74

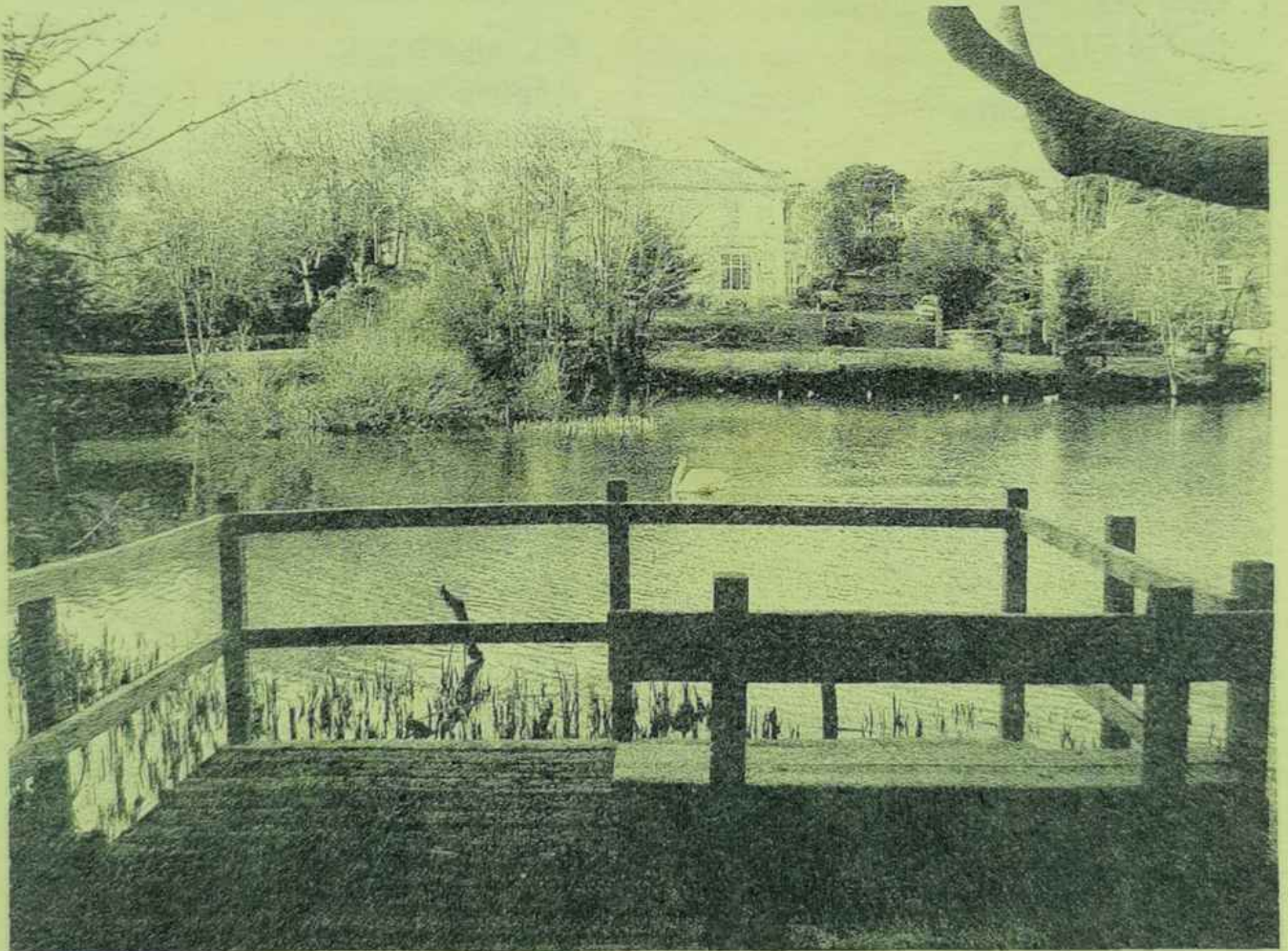
Feb./Mar.

2007



HAYLE PUMP NEWSLETTER

Circulation 2500 FREE copy, please take one. Made possible thanks to our advertisers.



New viewing platform at the Millpond.

*Hayle Pump Newsletter, Unit 14, Pratt's Market,
Chapel Terrace, Hayle TR27 4AB*

email: haylepump@theturks.fsnet.co.uk

*If you wish to advertise in the
Pump contact Donna Anton at
the phone no. / email below*

Editorial Team Members

Donna Anton

01736 753184

donna@donna-anton.com

Tim Appleton

Goudie Charles

01736 757351

Don Metcalf

01736 757720

Joy Scott-Mance

Pam Stephens

01736 756752

Jeff & Sarah Turk

35 Penpol Terrace Hayle

TR27 4BQ, 01736 752319

Judith Venning

01736 753108

jvenning@worldonline.co.uk

Roger Winterburn (Secretary)

01736 756393

The Hayle Pump would like to remind readers that items, or articles and Public Notices are accepted as points of view and are not necessarily the opinion of the Newsletter Team. Correspondents are reminded that all material submitted must be signed with their name and address, and if possible, telephone number for validation. This will not be printed if you don't wish it to be. We reserve the right to refuse or edit items sent to us.

Advertising Rates

Half page (130 x 95mm) £22.00

Quarter page (63 x 95mm)..... £12.00

Eighth page (63 x 42mm)£7.00

You can leave your news, letters, notices etc. at our unit in the market, or with any of the team. You can also use any of our drop-off points:

at Foundry:

Biggleston's Hardware

Colin's Market Garden

at Copperhouse:

Angove Sports

Jolly Bodger

HAYLE PUMP

SUBSCRIPTION SERVICE.

For those readers who would like a Pump sent to family or friends elsewhere in the UK, or local people unable to get into Hayle to collect a copy, we operate a postal subscription service. Simply send us the delivery name and address CLEARLY PRINTED, together with £2.50 to cover the cost of stamps and envelopes, and we will send a year's issues (6 copies) of the Pump as soon as it is published. (UK addresses only—please make cheques/postal orders payable to "Hayle Pump Newsletter")

Closing date for next issue:

20th March 2007

*(adverts subject to space
availability)*

MILLPOND UPDATE

I am happy to report that all the work has now been completed on the new observation point by the students from Duchy College and it has already been used by visitors to the ponds. Not only does it give us a great view of the main egret roost in the willows, but these enterprising waders have set up two new roosts, one on the fallen tree opposite the platform and one on Duck Island next door, and just to make sure that you cannot ignore their presence they even sit on the platform itself from time to time.

Just before Christmas the willow arrived from Somerset and the woven fence was erected around the far end of the inner pool to complete the last section of the site boundary. This living fence will, once established, also provide an interesting habitat area for some of our smaller, more vulnerable residents.

During the next few weeks more work will be carried out to complete the project to improve the wetland at the top end of Millpond Avenue and the removal of any rubbish which has been dumped on the site and which might prove harmful for our wildlife.

Once the entire project has been completed a grand opening will be held to thank the public for their continuing support and interest in the work we have carried out at the Millponds since 1985. It is hoped to hold this event on Easter Monday, but full

HEYL'S KITCHEN

CAFÉ

- Extensive Menu
- Homemade Dishes
- All-day Breakfasts

6-7 Chapel Terrace
Foundry Square
Hayle TR27 4AB

Tel: 01736-756581

*Vegetarian & children's meals available
Affordable prices & a friendly welcome*

details will be announced nearer the time.

*Georgina Schofield
Volunteer Wildlife Warden*

HAYLE STANDS AND DELIVERS

It was almost standing room only when the Hayle Plan Partnership (formerly the Hayle MCTi) held its Open Evening at the Day Care Centre on Tuesday January 16th.

As you probably know the MCTi have been working towards producing the vision of what Hayle will be like over the next 20 years by consulting local people and seeking their opinions. This resulted in the Hayle Area Plan being published last September and the Partnership being

*Serving superb food
prepared from
fresh local produce*



Daytime menu served 12 to 4.45pm
Evening menu served 5.30 to 9pm
Sunday lunch served all day.

*A really friendly welcome.
Enjoy your meal served in a
nonsmoking bar & restaurant.
(Smoking area in our covered courtyard.)*

Bookings welcomed.
Tel: 01736-753289

Email: engs@lambandflaginn.co.uk
Find us on the A30 just west of Hayle

formed to implement the Plan.

The MCTi organisation was formed to give the community the power to have the major say in what happens and to work with local organisations and local councils as partners.

The purpose of the Open Evening was to outline the five areas of influence in which we hope the community will become involved. Chairman John Pollard outlined the way we hope to achieve this and five groups formed to discuss what they hoped to implement. The groups and their next meetings are outlined below and if you have an idea or project it is well worth your going to the next group meeting. The Delivery groups are not set in stone so that your idea may fit into more than one and you can quite readily be involved in more than one group. If you are in any doubt please

contact me at the Office on 01736 755448.

We have seen many false dawns in Hayle but this could be the best chance for real community involvement for a long time.

The Delivery Groups all meet at 7.30pm at the venues indicated.

Business & Enterprise 5th February
Passmore Edwards Institute
Community Wellbeing 6th February
Hayle Day Care Centre

Heritage Culture & Environment
12th February, Passmore Edwards Institute

Tourism & Sustainability 5th Feb.
Partnership Office, Dowren House,
Foundry Lane

Traffic & Transport group is meeting on 30th January before this issue of the Pump is published. Please contact me in the office to find out the date of their next meeting.

We look forward to seeing you soon.
Roger Winterburn (Community Agent Hayle Plan Partnership)

Loose Covers

Expertly tailored to fit your furniture

Made using your own fabric or choose from a large selection

For a Free quote at competitive rates

Tel 01736 753674



A Cornish Ceilidh

The Rotary Club of Hayle is holding a Ceilidh on **FRIDAY 16TH MARCH** at Hayle Rugby Club. 8 – 11pm Pasty Supper with Bar £7.50 featuring **THE NEWLYN REELERS.**

Praze Hayle Male Choir

Are Male Voice Choirs the new rock 'n' roll? A Welsh male voice choir's album made the pop charts over the Christmas period. Although the Praze Hayle choir may not, as yet, have achieved chart success, we do offer local opportunities to see us or to book us for a local event. Or you could join us and exercise your own vocal cords throughout 2007! We are also due to be recorded by Radio Cornwall on January 30th and will be the featured choir on Cornwall Connected on a Sunday afternoon some time in the next few weeks.

Recent events and concerts.

Since the last Pump issue the choir took part in a charity evening on the 25th November in aid of the Children's

Hospice SW at the Perranporth Memorial Hall when the musical input was shared with the HMS Seahawk Volunteer Band from Culdrose.

On 1st December the choir provided the entertainment at Praze Institute for the annual Senior Citizens' Christmas Dinner, combining some of its regular repertoire with Christmas songs and carols.

The following Sunday the choir took part in Ventonleague Chapel's carol service. As one of the beneficiaries, the choir was represented at Cllr. Tommy Bray's last coffee morning on 9th December at the Victoria Inn, Four Lanes and later the same day provided musical entertainment, a mix of its usual repertoire and carols, at the Godolphin House Food Fair.

The following evening the choir was at the Blue Anchor Helston where the

NOW OPEN

PLANET Showrooms

great ideas for your space...

- **Kitchens** - Bespoke & Contemporary Designs
- **Bathrooms** - Duravit designs and more
- **Natural Stone & Slate** - wide selection
- **Ceramic Tiles** - from around the world

Planning & Design Service

01736 757453

Unit K1, St. Erth Ind Est, Hayle TR27 6L

OPEN every day (Sunday by appointment)



LINE-FREE VARIFOCAL SPECTACLES COMPLETE

FROM

£109

20% - 33%
*off Designer
Frames starting
from £75*

F.L. KEAST

F.B.D.O. Dispensing Opticians

**18 Commercial Road,
HAYLE
tel. 753145**

**21 Alverton Street,
PENZANCE
tel. 366106**

hosts kindly provided mulled wine, homemade sausage rolls and mince pies for everyone.

The last engagement before Christmas was at the Mount's Bay School's Christmas Concert on the 19th December. The evening marked the 25th anniversary of the Penlee Lifeboat disaster and a collection was taken for the RNLI. The choir's pieces included Verdi's 'Speed Your Journey' as well as 'Let the Lower Lights be Burning'. Our Christmas music was also well received

A few choir members, together with members of other Cornish male voice choirs, joined the Cornish Harmony Choir in Falmouth for the annual carol singing through the town on the morning of 23rd December. All the choir wish to thank Tommy Bray, who on Tuesday 9th January attended our Choir practice with his contribution from the December coffee morning.

Forthcoming Events:

Sun. 28th January.

St Elwyn's Church, Hayle. 7.30pm

Mon. 5th February.

Crowan Feast, Crowan Church.
7.00pm

Sun. 4th March.

Hayle Methodist Chapel. 7.30pm

Membership and choir contacts

The choir welcomes potential new members of all ages at its practice in Hayle Methodist Chapel on Tuesday evenings at 7.30 pm, the requirements being to have a male voice, an ability and a desire to sing with others. Previous experience in male voice choirs and reading music, while welcomed, is not essential.

For more information, contact Roger Evans, Secretary 01736 754681 or John Barraclough, Assistant Secretary ; 01209 831879



KIND OF CORNISH



Both this month's new CDs are by artists who have been well-respected mainstays on the local music scene for a long time, and I am sure these releases will be warmly welcomed.

Steve Slimm is a highly talented guitarist/vocalist/ songwriter, and has written all eleven tracks on his album "Pause for Breath". His haunting, intimate songs are well-crafted, with wonderful acoustic guitar accompaniment, and unexpected twists and turns, and many feature the expressive violin accompaniment of Allen Samuel. Steve had reached a crossroads in his personal life when he recorded this album, and a feeling of poignancy certainly comes across. I highly recommend this album, excerpts of which can be heard by visiting:- www.myspace.com/steveslimm Incidentally, Steve, who is also a talented painter, may be known to many Pump readers because he lived in Hayle for 12 years. (43 mins, £10)

Julie Elwin will also be well known to many of those who support the live music scene, and her CV includes successful appearances with her own band at the Celtic Music Festival, as well as the St Ives September Festi-

Café 1

Have you visited us yet?
Many home cooked specials freshly prepared on the premises including:
bread, bread rolls, pizza, desserts, & savouries.

Award winning breakfasts.
Ample free parking on the Estate at St. Erth alongside the A30 with access to one and all.

01736 756123



HOME & AWAY CLEANING SERVICE

- Domestic Cleaning
 - Spring Clean
 - Ironing
- After-Party Help
 - Holiday Lets
- Moving House Clean

CALL TODAY FOR DETAILS:

Tel: 01736-741108

Mobile: 07810-800162



Blushhh

Beautiful & practical
Lingerie and Hosiery
for work and the bedroom

Larger sizes in stock
and to order

Free measuring and fitting service

49 Fore Street
Hayle
Cornwall
TR27 4DX



Bini

Phone: 01736 753440

val. Her new CD is entitled "Before sins. And after". As with our first review, Julie is a singer/ songwriter who also plays accordion. The music would probably best be described as folk-rock, and Julie has a fine vocal style which perfectly suits this genre. The accompaniment variously includes guitars (both electric and acoustic) keyboards, bass guitar and percussion, and the album is very well produced and recorded. The accompanists include, amongst others, such luminaries of the local scene as John Bickersteth on keyboards, guitarist Dave Mason, drummer Nick McLeod and bassist Simon Elwin. Ms Elwin continues to develop her music, and her many admirers will find this release up to her usual high standard. For more information, visit www.julieelwin.co.uk or

www.myspace.com/julieelwin.

(54 mins, £10.)

Both of the review CDs, and many other items by Cornish and Cornwall-based artists, as well as a large selection of classical music, jazz and nostalgia, can be purchased from:-

West Penwith Music
Union Street
Penzance
Tel. 01736 364440

Goudie Charles

Kris Gayle

VOCAL TUITION

JAZZ, BLUES, ROCK, etc.

TEL. 01736 757351 (Hayle)



THESE TWO WOMEN
ASKED ME IF I WOULD
BE A JEHOVA'S
WITNESS. I SAID,
NO; I HADN'T SEEN
THE ACCIDENT.

Hayle in Bloom

Hayle in Bloom has reached a very exciting stage and this year will see us entering the Town and National Competitions of Britain in Bloom. We therefore have to be prepared for two sets of judging and for the 'National' we could also have an unannounced judging.

This is all very challenging and the theme for 2007 is "Bloomin' Wild". The judges will be looking for particular instances of planting for wildlife and anything unique or really effective.

We are really fortunate in that I feel we will fit into this category as we are now in partnership with Hayle Library with a project to set up a Community Wildlife and Reading Garden on a

piece of land behind the Library in conjunction with the BBC's Breathing Places.

For our entry into the 'National' competition, in the Floral Display section the judges look at Public Parks and Town Gardens, recreational area etc.

* Shops, retail centres, bus and train stations etc.

* Residential front gardens

* Community involvement, Schools etc.

* Recycling sites and car parks

* Sustainable development, management of natural areas and waste management.

* Cleanliness of towns and treatment of weeds and condition of street furniture.

Public Awareness :-

Marketing, publicity and promotion of

THERE'S ALWAYS LOTS TO DO AT PARADISE PARK!

Beautiful exotic and Cornish wildlife, friendly farm animals... and the huge 'JungleBarn' indoor play centre, there's so much to enjoy at Paradise Park.

- Home Cooked Roast Lunches (Tue, Thur & Sun)
- Themed birthday party rooms
- Park & Gift Shop open 10am - 3pm
- JungleBarn open 10am - 6pm
- Return Tickets just £2.50



ROAST LUNCH

HOME-COOKED ROASTS IN THE OTTER POOL CAFE ON TUESDAYS, THURSDAYS & SUNDAYS.

Free entry to the Otter Pool Cafe and gift shop.



Paradise Park, Trelissick Road, Hayle

Open every day at 10am Infoline: 01736 751020 www.paradisepark.org.uk

Britain in Bloom and organization and innovation in attracting sponsorship and fundraising.

We have quite a challenge but I am sure we will arise to the occasion. We are a happy committee with very hard working volunteers and we are always very grateful for all the help we receive from people in the town.

It is true to say that we rely on the shops and other establishments to have tubs and hanging baskets, but at the end of the day we are all working together to make our town a lovely place for visitors to see and admire and not just pass through. As in past years we are always very appreciative of your support.

We were all saddened to hear of the death of Reg Goodspeed of Tre-vassack Nurseries who had always been so helpful to Hayle in Bloom, we

will really miss him.

Marjorie Roberts, Chairman.



Hayle Methodist Church Hall

Saturday 17th March 2007

8.30am – 12.30pm

Please come yourself and invite a friend – we need your help to raise money for Cancer Research UK



NEIL WADE

MOTOR ENGINEER

CENTRAL GARAGE

10A HAYLE TERRACE, HAYLE



***MOT CAR & MOTORCYCLE
TESTING CENTRE***

DIESELS & CATALYSTS TESTED*SERVICING*REPAIRS*

WHEEL BALANCING*EXHAUSTS*TRACKING*

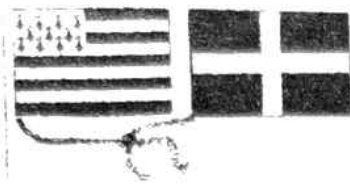
TYRES*BATTERIES*

PROVIDING SERVICING & REPAIRS TO ALL MAKES OF VEHICLE

TEL 01736 756512

MOB 07990 981546

HOME 01209 610651



HAYLE TWINNING ASSOCIATION

We are holding our **AGM** on Tuesday 13th February at the Passmore Edwards Institute at 7.15pm.

Everyone is welcome to attend, although you can only vote on any issue if you are a paid-up member. If you are interested why don't you come along and meet us, we are always looking for new members.

This is our tenth year, and our friends are arriving in Hayle on Thursday 17th May and they depart again on Sunday 20th. Our visit to Pordic will be on Friday 31st August, returning on Monday 3rd September. Our membership fees are very good, single person £3, a couple £5 and a family £7 – this is for youngsters up to the age of 16.

On Tuesday 16th January we held our annual after Christmas dinner and on this occasion we went to the Cornish Arms. There were 34 of us and once again everyone enjoyed themselves, we all had a great meal and a relaxing few hours of eating, talking and the odd drink of course. It was lovely to see our new members and their families there with us enjoying this social night out. This is the only month of the year that we don't hold a meeting, it's our night of relaxation.

I would like to thank Jon Daniel and his staff for giving us such good service.

Fernleigh BED & BREAKFAST

En-suite, Colour TV,
Coffee & Tea making
Facilities in all rooms.

NON SMOKING

**26 COMMERCIAL ROAD
HAYLE
CORNWALL
TR27 4DG**

TEL: 01736 752166

mikelynreffold@fernleigh.fsbusiness.co.uk

LYN & MIKE REFFOLD

In May when our visitors are here we are hoping to be able to get the Praze Hayle Choir, Heyl Town Band, Hayle Community School, Penpol School, Bodriggy School and perhaps the Samba Band all together and put on a musical concert for a few hours on the Saturday afternoon, possibly between the hours of 2pm – 6pm, Mrs Christine Jackman the Head at Hayle Community School has kindly offered the School as a venue.

Maurice Trathen 01736 753341

Congratulations to Heyl Town Band!

**At Skegness on Saturday 20th January
Heyl Town Band won the Butlin's 3rd
Section National Championship 2007.**

TAMARISK CARE AGENCY



CARE IN THE COMMUNITY

01736 752187

We are a family run agency, and registered with The Commission for Social Care Inspection.

Tamarisk can provide a diverse range of services at reasonable rates;

- Personal Care
- Household tasks
- Laundry
- Shopping
- Meal preparation
- Sitting service, day or night

Let Tamarisk help you care for your loved one.

Also if you're interested in a caring, challenging and rewarding career, uniform and full training provided, please call Tracey 01736 752187



Council Corner

The Resource Committee met on 18th January to consider the precept for 2007/2008. This is the amount that Penwith District Council adds to the council tax on behalf of the Town Council. But first the committee had to consider a potentially major impact on the precept.

CCTV The Council has been very concerned about the need to raise a large amount of money to fund an upgrade of the CCTV system. The amount Hayle was being asked to pay would have required a 10% increase in our precept for a period of at least five years – and the Council

has managed for many years to keep any rise in the precept in line with inflation. After a lengthy the committee resolved to recommend that while we do "not wish to lose the CCTV system, it is regretted that the Council is unable to contribute to the scheme in the financial year 2007/8. It is the opinion of the Council that funding for the CCTV system is wholly a PDC responsibility and that the percentage increase to the Town Council's precept is unacceptably large." This recommendation must be ratified by the full council.

Precept 2007/8 Without the need to add a large sum for the CCTV, the Resource Committee recommended a precept for 2007/8 that is 3.2% over 2006/7. Since the figure for inflation for the period is forecast at 4%, this represents a reduction of 0.8% in real terms. Again, this recommendation must be ratified by the full council.

Elections, 3 May Elections will take place on May 3rd for all 15 town council positions and for one district council position in the North Ward. We have a "Democracy Pack" from the National Association of Local Councils in the Town Clerk's Office giving details of why you should vote and how you can stand for election. Pop in, or contact the office for more details.

E. Giggall, Town Clerk HTC 13 – 15 Hayle Terrace, Hayle TR27 4BU 01736 755005

townclerk@hayletowncouncil.net
www.hayletowncouncil.net

Useful Tip: Rub leather shoes with banana skins to achieve a beautiful shine. *From Barry.*

ROOF FALLS IN ON PUMP SHOCK HORROR!

Okay, so I exaggerate a little, it wasn't actually the roof but part of our office ceiling, and it came down during the severe weather over the holiday period. Fortunately nobody was there at the time, and the damage wasn't too bad considering a lot of the debris landed on our printer, for which some prescient and prudent Pump soul had bought a cover. (Thanks Sarah.) Thankfully all our IT and printing equipment emerged unscathed. It was however impossible to continue to work in the office and we had to move ourselves and our equipment out of the unit

whilst repairs are carried out.

Our warmest thanks go to photographer Andy Parker who temporarily allowed us to store our equipment in his studio in Pratt's Market for safe keeping. Subsequently we were heavily indebted to Paul Dyer, who fixed us up with a temporary home in one of his units upstairs in Foundry Gallery. We hadn't previously considered Hayle Pump to be an art form (all right, maybe some of us had) so it's interesting to be in the arts and crafts section.

So, dear reader, if this issue is a little later than usual hitting the bustling Hayle news stands, we hope you will understand. The good news for us is that after a start like this to the year, things can only get better!

Goudie Charles



The Haven

Riviere Sands Holiday Park opens on March 23rd 2007. We are looking forward to a busy season. With 2006 being a fantastic year for us, we anticipate a similar trend in 2007.

Of course, as always, the **Everydays** shop and **The Bluff Inn & Restaurant** will be open to local people, so we look forward to seeing you there.

And, of course, we also offer great deals for any family and friends you might have coming down this year.

Call us on **01736-752132** for any information.

Scoop!

We only managed to snap one good citizen this issue. (Due mainly to our reluctance to parade the length and breadth of Hayle in the cold weather!) The winner of our £10 voucher is Katie Hunt, pictured with Diesel.

Lent Lunches

Lent Lunches start this year on Wednesday February 28th at Phillack Church Hall. 12am. This is a lovely opportunity for folk to come in from the cold and meet up for a hot bowl of soup, a roll and a cup of tea for a very small charge. The monies raised go to a good cause, and the soups are made and served up by each of Hayle's churches in turn.

Sarah Turk



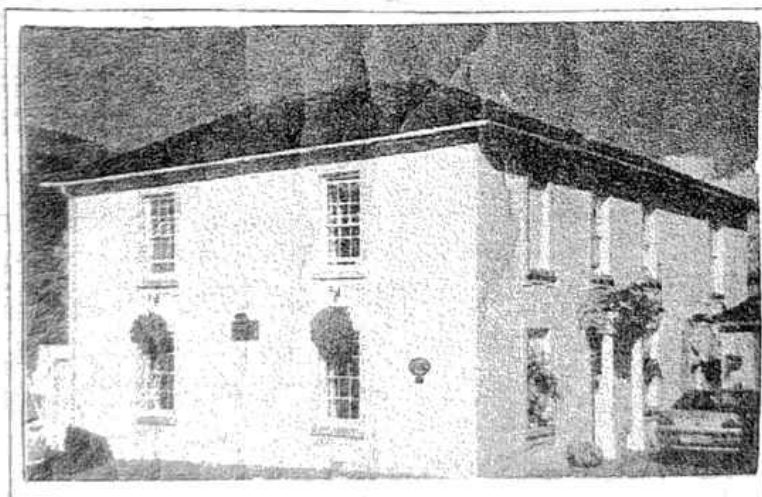
CRANFORD HOUSE BED & BREAKFAST

OPEN ALL YEAR—CHILDREN WELCOME

*ALL ROOMS
EN-SUITE*

*NON
SMOKING*

*OFF ROAD
PARKING*



LUXURY

HOLIDAY

APARTMENT

TO LET

PETER & PEGGY DARLOW

01736 752618

Foundry Hill * Hayle * Cornwall * TR27 4HW

cranford-guesthouse@talkgas.net

Hayle Decorative Lights

There really are some evil people in Hayle, not only did we have some of our equipment stolen, now someone has drilled holes in the fuel tank of the Lights car and drained out the diesel. There was less than a gallon in the car, and for that we have to buy a new tank and get it fitted, all extra expense we can well do without. The car is a Peugeot Estate which has a plastic fuel tank, and had just gone through the MOT. Once again we must thank Neil Wade for his help and sponsorship.

The Lights team has now taken down the Christmas trees and set-pieces, they have had to borrow a lorry to do this, and go out in the wind and rain. It is very disheartening when these set-backs occur, please do let any one of the team know if you have any idea who the culprits were.

On a brighter note, here are some **Dates for your diary**

Quiz Nights:

February 2nd, March 2nd, April 27th
All at the Rugby Club.

Raft Race: August 19th. Plenty of time for you to get your rafts ready!

Yoga

beginner's classes

Tuesdays 9.30-11am

Passmore Edwards Institute

£4.50 per class

Tel: 01736 366388

PLANTECH

THE FRIENDLY RELIABLE SERVICE

- Lawns cut and borders weeded
- Hedges trimmed
- House, garden & building waste taken
- Garden clearance work
- Gravel, sand, topsoil delivered & laid
- Garage and loft clearances
- Free no obligation quotes

(Tel) 01736 754401 / 07979546434



HAYLE RESIDENTS ASSOCIATION

Following the report in the last issue of the Hayle Pump we continue to advise readers of our activities on behalf of Hayle and its residents.

First we trust you all had a very happy Christmas and we wish everyone a happy new year. The Residents Association was approached by Penwith District Council to set up a steering party to administer a Community Chest Application to the Kerrier/Penwith DC Liveability Community Fund in respect of improvements required to the Foundry Mill-pools and Ropewalk. As a result a grant of £10,000 was awarded ; work started in the area in August and is

due to be completed soon.

General clearance and pruning work is due to be done during January with the aid of the Penwith Beach Life Guards and volunteers under the direction of Phil Drew, the Penwith Life Guard Officer. Extra seating provided and fixed by the Penwith Parks Dept will also be placed in suitable locations around the area. The Ropewalk itself, and the ruins associated with it, will be generally tidied up, the original use of the various buildings identified as far as possible and an information board erected. This will also outline the history of the area for those using the walk. When the project is complete, consideration is being given to organising an opening function to be held in Millpond Gardens, possibly on 7th April (Easter weekend) subject to the

permission of Hayle Town Trust who manage the area. More details will be given in our next article and in the local press.

We are continuing to monitor any planning applications which could affect the possible future of our town. It is understood that a revised application for the Hawkins Motor site is due to be submitted, indicating a compromise proposal with housing located only on the "footprint" of the present buildings on the site and the existing open space retained. We will watch this proposal with interest and report accordingly.

The extension to Lidl over the Pickfords site is now well under way and could possibly be a great improvement to the 'gateway' to Hayle. We are, however, concerned that any possible future access to develop-



J C ELECTRICAL



Your complete 24hr Electrical Service

City & Guilds Qualified

Tests to 16th Edition BS7671

Rewires, New Build, Lighting, Extra Sockets,
Showers, Heating

Prompt Reliable Service

All Work Guaranteed

Free Estimates

Hayle 01736 754543

Mobile 07739 577 549



ments at Loggans Mill has been compromised yet again! We will check the situation and report accordingly. We understand that an outline planning application is being considered for possible development of Loggans Moor, including the Mill itself. We intend to check when a more detailed application is submitted to ensure that the industrial development suggested by the developer is of a standard of design that complements this 'gateway' to our town, and also that the use, access to and potential of the Mill is properly recognised.

We understand that the planning application for proposed development of the R&J Supplies site has been approved, but we will continue to keep a watch on developments. Meanwhile we will continue to work closely with the Chamber of Commerce and all the other groups and organisations in Hayle and support any suggestions which will improve our town now and in the future.

The Residents Association Office, and contact point, is now no longer at the caravan in Bodriggy Crescent, but any future contact can be made at the Friday afternoon weekly surgeries held at the Sure Start offices in Bodriggy Street, where an Association member will be in attendance in accordance with the published rota of Town, District and County Councilors. Alternatively contact 01736 753086 or 757910.

Arrangements are being made to hold the Hayle Residents Association AGM on Tuesday 8th May 2007 at the Hayle Day Care Centre; more details will be published later in the local



CLIFFORDS PLUMBING

For all your plumbing needs

**From a dripping tap
to a complete bathroom**

Friendly, reliable and tidy service

01736 755170

07761 938183

PENPOL GARAGE

- In Tune with Technology -

Air Conditioning Specialists
Engine Management, ABS,
Air Bag Diagnostics

.....

Free-fit Tyres & Exhausts
Free pre-MOT

All makes of vehicles repaired & serviced

.....

*Friendly, personal attention
& professional service*

17a Penpol Terrace, Hayle

Tel: 01736-757011

Mobile: 07921-218448

Now accepting all major cards.

Story Circle. It was a fantastic turnout with over 70 children and adults. It has been a lively few months at Hayle Library with the expanding children and parent groups and community events such as Surestart Day, the Wonderful Words and read-craft stalls, art exhibitions and reading groups. We have been working hard behind the scenes to put together a bid for the BBC's Breathing Places project. This could potentially transform the area behind the library into a wild life and reading garden and a lovely place for all the community to enjoy. Please look out for news on this project within the library over the next six months. We will need volunteers of all ages to get involved! Please remember it is totally free to join the Library and membership entitles you to borrow up to 18

press. Meanwhile, should anyone have any queries or require further information please contact me on 01736 757910.

Bob Mims

GARDENING & HANDYMAN



SERVICES

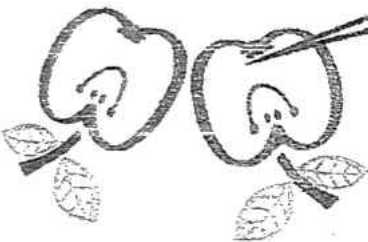
Gross Cutting, Hedge Trimmed, Rotovating, Overgrown Gardens Reclaimed, Jet Washing, Painting & General Maintenance.

NO JOB TOO SMALL
 for a free estimate call
 CHRIS CURNOW on 01736-793501
 Mobile: 07749 874 390

HAYLE LIBRARY NEWS FLASH

Hayle Library would like to say a big thank you to everyone who came to the library's Christmas

**CHRISTMAS HAS GONE - WOW!
THE GOOSE HAS GOT YOU FAT**



**JUST DROP IN COLIN'S NOW
AND RECTIFY THAT FACT!!**

**COLIN'S MARKET GARDEN
FOR THE FRESHEST (& FITTEST)
IN FINE FRUIT & VEGETABLES**

OFF FOUNDRY SQUARE!!

WHERE?!

verse by baller (the Bard) arts 756756

items at one time. We have latest release DVDs and computer games for a price of £3 for a 1 week loan. We also have CDs for 60p per week and talking books for £1.25 for those cold winter evenings. We get new books all the time and if you can't find what you're after we can order it for you.

Our service is here for you so please make the most of it and if you have any enquiries about anything we are here to help you.

We are currently running adult's poetry, reading, writing and play reading groups at the Library. We are also setting up a children's reading /creativity group called the Word Pod which will be free to join. This is for 7-11 year olds and will start in February. If you are interested in joining please ask a member of staff at the front desk. There is a new learning aid for children available through the library called 'Raw, the Amazing Travelling Circus'. Please ask at the desk for details on how you can apply.

The staff at Hayle Library would like to wish you all a Happy New Year! See you soon. **01736 753196**, or email:- hayle.library@cornwall.gov.uk

Information Needed!

Can anyone supply information about a boat that was moored behind what is now Tempest's works at the Hayle end of the Causeway during the 1950s? It appeared to be the hull of a wartime Motor Torpedo or Gun Boat MTB/MGB. I can clearly remember travelling on the train to St Ives as a

R	ROY
H	HAYES
G	GLASS

*For all your glazing needs
Over 40 years' experience*

We've moved!
Unit 2, Prykernow, Penpol Avenue
Hayle TR27 4NQ
- Good parking -
Tel/Fax: 01736-754023
Moble: 07880-530795

Please note that Roy has moved. He is now at Prykernow, in Penpol Avenue, next to Penmeneth House Residential Home. (In what used to be the old pottery)

child and seeing this boat across the estuary from Lelant.

I would welcome any information on the type of vessel, whether it was a MTB or MGB, Vosper or Thornycroft etc, who owned her, the reason she was brought to Hayle and what happened to her in the end. Photographs would be a bonus and I will be happy to reimburse copying or printing costs.

Anyone with any relevant information please contact **Neill James on 01209 717395.**

Harvey's Foundry Development Scheme

The scheme covers two hectares on the former Harvey's Foundry site and is intended to reverse the decline of this important part of the town's industrial heritage.

The completed redevelopment of the foundry site will turn a decaying, under-used historic asset into a vibrant focus for education and heritage that will be a key area centre for the Cornwall and West Devon Mining Landscape World Heritage Site. There will also be 16 artisan's studio and craft workshops plus 8,000 square feet of office space for start-up businesses. An impressive research/archive centre will chart the historical importance of Hayle, the Harvey's Foundry and the Copperhouse Foundry, highlighting their crucial role in Britain's industrial heritage.

Harvey's Foundry Trust

The Trust developed from the local community working in partnership with key stakeholders who saw the opportunity to focus regeneration on the site not only to promote the history of the area, address the physical dereliction and take advantage of the opportunities the space offered, but also to act as a catalyst for change in this deprived area.

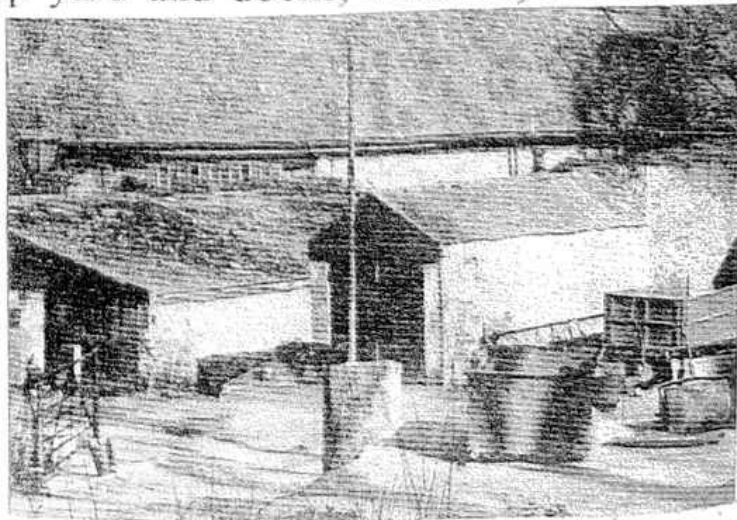
The Trust aims to promote the preservation and development of the former Harvey's Foundry site. It will protect the natural, historical and architectural heritage and develop projects of historic and public interest.

Harvey's Foundry Trust is supported through: Penwith District Council, Hayle Town Council, English Heritage, SWRDE, Cornwall County Council, European Union Objective One and the Heritage Lottery Fund.

Then and now

Harvey's Foundry was a powerhouse of industry on a massive scale. As well as the main foundries, it also boasted: a boring mill, fitting shop, pattern shop and stores, extensive offices, hammer mills, ropery, grist mill, timber store, steam hammers, saw mill, iron house, lime kiln, ship yard and docks, wharves, 2 miles of railway sidings, its own railway station, a fire station, a hotel, worker's cottages, managers' houses and the Foundry Farm. Harvey's Foundry, together with Copperhouse, developed into a centre of international engineering expertise.

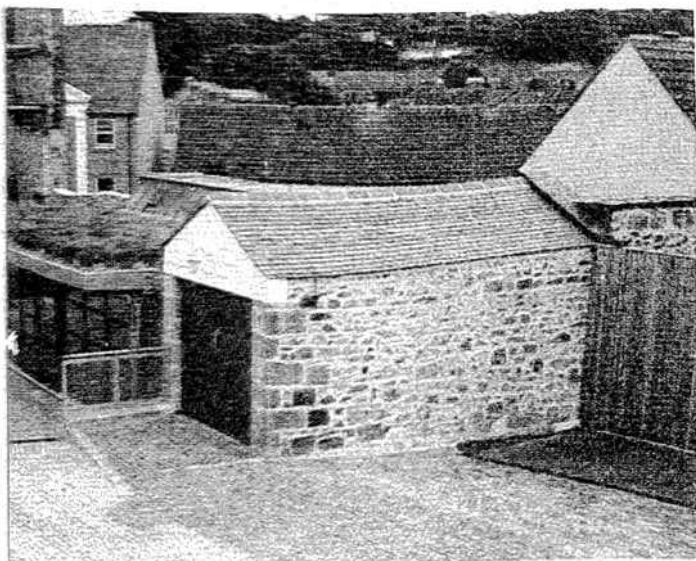
Today, very little of this remains. The only elements left intact following the decline of industry at the



turn of the 19th century and the demolition of many of the buildings in the 1970s and 80s are the Foundry Farm, some of the offices, the timber store (now part of Jewsons) and the pattern stores. Other buildings which survive only as partly restored remains include the grist mill, hammer mills and ropery (now Millpond Gardens) and part of the boring mill which is due for restoration under Phase 3.

Foundry Farm

Resulting from a working partnership between Harvey's Foundry Trust, The Guinness Trust and Penwith District Council, Foundry Farm is Phase 2 of the development.



The farm was made up of old stable blocks, fire engine shed, granary barn and engine house set around the old farmyard.

These historic buildings have been sympathetically renovated into a range of 16 highly desirable craft units, some of which combine a live/work layout which are the very first of their kind in Penwith.

Harvey's Foundry Farm

Open studios/ workshops
Foundry Lane, Hayle
*Lane opposite Jewson's or lane
opposite Millpond*



printed textiles
gift items
quilts and hangings

01736 754362

LISA KING
Kernowek Creations.

Studio No. 8

01736 759374

0788 072 5395

*Hand-made pottery & glasswork.
Also classes in both crafts*

VANESSA PAGE

Jewellery Workshop
Fire Engine Shed

07737 682 460

*Individually designed jewellery.
Also repairs, re-sizing & re-stringing*

Des Button

Springfield
33 Clifton Terrace
HAYLE TR27 4BP

01736 753211
0778 868 2076

ELECTRICAL
SERVICES &
SUPPLIES

Part P
Registered



Letters.....

Letter

Matt ICU Signs

Just to let you know that hopefully I will be relocating to new premises shortly.

I can still be contacted on:

*01736 758237 and
01736 751742*

Matt ICU Signs.

Letter

Appreciation!

May I take this opportunity to congratulate you on the production and content of the Hayle Pump. It is great to get all the news and the feeling that Hayle is really coming

alive again – not that it was dormant! As a native of Hayle, now exiled to far off Somerset, I look forward to each edition.

Roger Sleep

- Rushing home early from work to pick up the kids?
- Don't know what to do with them in the holidays?

We can help!

Hayle Out of School Club

(rear of Penpol School)

01736 757695

Ages 4-12

Ofsted Registered

A VIEW FROM THE STEEPLE

“With heigh, ho, the wind and the rain,

Though the rain it raineth, every day.”

2007 may have arrived but it managed to drag in the tempests of 2006 with it, and small sparrows have great difficulties with 70-plus mph winds. Thank goodness I stocked my larder during the pre-Christmas period or I might be close to starvation by now. All those mince pies, slices of Christmas cake and biscuits certainly helped.

The Churches Together Carol Concert gave us a rousing start to the festive season followed by three school concerts, two by Bodriggy and one by Penpol, which were totally packed out and performed to a truly high standard by the children, who enjoyed every minute.

Christmas Eve fell on a Sunday

which meant that there were three services with the addition of the normal Parish Eucharist in the morning. The Crib Service was particularly well attended and the children performed a nativity play and then Midnight Mass rounded off the day's celebrations.

On New Year's Eve I went to visit my cousins in Gwinear for the United Team Service and shared lunch. It was also Rev. Rosemary's birthday, which meant a few even tastier treats for us sparrows.

St Elwyn's played host to the Team Service for Epiphany on January 6th. The congregation was invited to a wine and cheese party at St Erth Vicarage, an event held annually to celebrate the "Feast of the Kings" and

much enjoyed by all.

With the festive season behind us St Elwyn's is now preparing for the winter concert season, as well as the tricky business of appointing a new team rector to replace Tony Neal.

With a busy few months to come I am off to batten down the hatches and get a little rest and relaxation. Sparrows need to keep their strength up or they might miss all those tasty morsels when tea and biscuits are served.

I'll see you all again soon, folks!

The Sanctuary Sparrow

Useful Tip: Use damp, folded-up newspaper to clean glass surfaces and windows. It works just as well as soapy water and doesn't leave streaks. *From Barry.*

1ST CHOICE PAVING

**Specialists in
all aspects of Paving**

TEL: 01736 753087

MOB: 07816 403265

**drives, paths, patios.*

**Bricks, slabs, tarmac, steps and kerbs*

**Digger work undertaken and gardens excavated*

**Off road parking created*

**Concrete paths, pads and shed bases*

**References and viewings welcome*

Hidden Words Quiz by Cleverclogs

This time we're looking for types of boats. The name is hidden in the sentence i.e. If you want to draw a straight line rulers are best. Answer: LINER. The first all correct entry pulled out of the editor's hat on 20th March wins a £20 voucher to be spent with any of our advertisers.

1. I would like to ask if fried food is bad for you.
2. Yes, too much of it is, especially if covered in ketchup.
3. Now, get on the treadmill, run and don't stop until I say.
4. I like fungi – giant puffballs especially.
5. "Do you holiday in Africa?" "No, Europe is my limit."

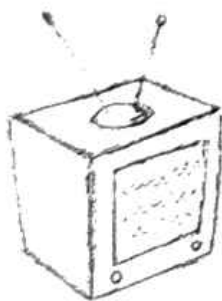
6. Okay, a know-it-all huh? What do you call this?
7. Don't panic, or a clear-cut lead will disappear.
8. Stop rampaging all over the place.
9. What you need is enthusiasm - acknowledge the fact.
10. I like breeding hybrids in my greenhouse.
11. And how many answers have you got so far?
12. The bus stopped a long way from the shops.
13. Wave your hand or yell – let me know somehow.
14. The farmer's cow strayed onto the road.
15. I worked in a nursery once, I had to lug geraniums around all day long.

Answers to quiz in issue 73:-

- | | |
|----------------|--------------|
| 1. Christingle | 7. Mistletoe |
| 2. Wreath | 8. Mincemeat |

Problems setting up your DVD - TV - Video - Digibox?

We offer a set-up service!



**SALE OF SECOND-HAND TV'S
FROM £49.99**



**MURTS TELEVISION
32 Penpol Terrace, Hayle
Repairs / Sales / Rentals
01736-752269**

- | | |
|-------------------|--------------------|
| 3. Advent | 9. Tinsel |
| 4. Greetings Card | 10. Decorations |
| 5. Angel Hair | 11. Christmas Cake |
| 6. Santa Claus | 12. Yule Log |

The first correct entry drawn on 20th January was from Mrs Andrew of Phillack. The lucky dip prize of £5 drawn from all entries was won by Mrs A Stokes of Connor Downs.

FOUNDRY BAR

Two ambitious women with great ideas have taken over the Foundry Bar since early December. Tracy Cronnelly from Hayle and Julie Kitto-Smith originally from Delabole, have created an atmosphere in which you can relax and enjoy food in the knowledge that it is nearly all sourced locally and thus ensuring that it is all fresh to the table. By doing this they believe they are putting something back into the economy of Hayle as well as providing an alternative to the many excellent ethnic foods and restaurants available in Hayle.

They believe the whole experience of dining out should be something special, taking it easy, lingering over the meal without being rushed, comfortable in pleasant company and surroundings.

Julie has 20 years experience as a chef, her main dishes range from £6.95 for lasagne, vegetable or meat to steak for £13.95 or a Cornish Shellfish Special for £16.00. There are of course children's portions of all the dishes as well as a set menu, and families are made

ALAN ORCHARD & SONS

APPRENTICESHIP SERVED



PROFESSIONAL TRADESMEN

CARPENTRY & JOINERY

uPVC FASCIAS

ROOFING, BUILDING,

DECKING

KITCHEN FITTING

01736 756687

07787 148571

27 GUILDFORD ROAD

HAYLE TR27 4PP

to feel really welcome. Be careful when ordering as the servings can be quite large and with this in mind it is perfectly okay to only have a starter and a pudding! Naturally as you would expect there are daily specials including vegetarian dishes. Those people with food intolerances, (such as gluten or nuts), will, with prior notice be happily catered for.

Sundays would not be the same without a traditional roast when there is a choice of meats on offer and for vegetarians there is more than the standard nut roast. To accompany your meal there are a variety of Cornish drinks, beer, lager, brandy and even a Camel Valley wine, served in glasses recycled from old bottles.

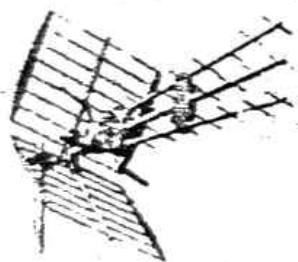
On occasion there might be a duo singing or playing but never in an intrusive manner and this applies to the piped music as well. It is hoped, that you will come away from the Foundry Bar feeling pampered and satisfied and recognising that local Cornish foods are great.

New Gallery at Hayle East

On February 8th I will be opening a new art and crafts gallery at Treglisson. It will be 'by appointment only' as it will not be open full time, due to other commitments. Also if you don't know Hayle beyond the Lidl's roundabout you will need directions. Please phone the number at the end of this article if you would like to come and view.

Treglisson Gallery will have the work of four local artists at its core, plus a wide variety of other artists' work, the idea being to showcase a broad spectrum of talent from the Hayle area. For instance, if you have a piece of work you think deserves to be seen, get in touch. Because of restricted space I cannot take anything too big, or anything of an obscene nature for obvious reasons, but if you have been turned down by other galleries, there may be a place for you here. The same goes for books, cards, films or music by local people. All work would be here at the owner's risk and is strictly on a sale-or-return basis.

The four main artists are Edward Ward, David Pascoe, Bob Berry and me, Linda King. Edward is from Manchester and had a career in sign



ALL AERIALS

TV / FM AERIALS & SATELLITE SPECIALISTS

Members of the Confederation of Aerial Industries
**ALL ASPECTS OF TV / FM AERIAL AND SATELLITE
WORK UNDERTAKEN**

**ALL WORK GUARANTEED * FULLY INSURED *
COMPETITIVE PRICES * PROMPT RELIABLE SERVICE
FOR FREE FRIENDLY ADVICE CALL JONATHAN**

01736 759225

Mobile 07979503907 / Email jon@allaerials.co.uk

www.allaerials.co.uk

writing and graphic design before moving to Cornwall 30 years ago. Using the ever-changing light he can catch the same view at different times of the day, giving a different atmosphere to the same location. He also paints giant studies of a single flower head, flooding a canvas with instant colour. Edward also produces prints and cards from his own originals which Tregliss Gallery will be stocking.

David Pascoe is a glass artist, first encountering kiln-formed glass in Australia in the late 1990s. David worked as a fisherman before teaching himself to work with glass, and now teaches others in this country and the USA. His approach is constantly evolving, and he is currently developing new work which combines his technical knowledge of glass with his interest in cubist and abstract expressionist art. David tries to combine this interest with the inspiration that comes from living in West Cornwall. His work is available at several other galleries, notably 'Beside the Wave' at Falmouth.

The photographer Bob Berry may be known to you through his book 'Coast' published in 2002. Self-taught, Bob started taking photographs whilst still a child. He stayed with it, perfecting his art over many years, including working for a time as a lab technician for H. Tempest Ltd, Lelant, before going freelance. In 1986 he had his first solo exhibition in Cornwall at the Penzance Arts Centre. The following year saw another Penzance show, this time at the 'Wolf at the Door' gallery. Since then he has had many exhibitions, displaying

COUNCILLOR TERRY LELLO CC



As your Town, District and County Councillor, I am here to represent you, share your concerns, and assist with any problems you may have. I hold regular surgeries every Friday at Sure Start, Portheyl, from 2 to 5pm. You are welcome to just pop in, or make an appointment. My contact details:

- 01872-322570 (County Hall)
- 01736-757507 (Home)
- 07837-311632 (Mobile)

Email: tlello@cornwall.gov.uk

John BENNETT

Independent

Hayle Town Council

Penwith District Council



Your representative for Hayle South Ward

After several years of work, under the guidance of the Hayle Area Forum, the Hayle Area Plan has now been published, and the management structure and delivery groups set up.

The plan describes an exciting vision for Hayle up to 2025, and is based on community consultation.

Please get involved. Find out more on my website.

Telephone: 01736-753184

Email: john.bennett@penwith.gov.uk

Web site: www.hayle.eu

BARTON print

Tel: 07799 411525
Fax: 01736 757022

Quick Reliable General Printing Service

JUST A SMALL SELECTION OF THE SERVICES WE OFFER!

- BUSINESS CARDS
- COMPLIMENT SLIPS
- NCR PADS / SETS
- LEAFLETS
- MENU'S
- NEWSLETTERS
- ENVELOPES
- LARGE FORMAT PRINTS
- LETTERHEADS
- OVERPRINTING
- B/W COLOUR COPYING

COMPETITIVELY PRICED

1 Turnpike Road, Connor Downs

Telephone 07799 411525 01736 754220

his love of landscape and seascape. It is very pleasing to know that Treglissos Gallery will be stocking some of his prints.

After living for five years in St Ives I moved to Hayle in 1997, and spent six years making components for a small company which built modern racing cars. When that job fell through I returned to my first love of art (with strong craft leanings). My work at the gallery covers abstract painting, collage, photography, sculpture, jewellery and ceramics. They frequently cross each other; for instance at present I am making ceramic jewellery for 'The Red Elephant Bead Shop' in Truro. My inspiration can just as easily come from something I have seen in the media, as from an aspect of nature, so you

might be surprised at what you find here.

Phone 01736 759472 between 10am and 6pm if anything in this article has nibbled your curiosity.

Polite note: Treglissos Gallery cannot cater for the presence of small children or dogs, so please leave them at home. Thank you.

Linda King

PET PORTRAITS

Local watercolour artist & pet owner Stephen W. Driver will paint or draw your best friend, for a reasonable fee, to your satisfaction.



Phone without obligation:

01736-740646

Come & see for yourself!

Hayle Chamber of Commerce



What's it got to do with Hayle Chamber of Commerce?!

How often we have heard that cry! But Hayle's future now is brighter than the day Harvey decided to start his first foundry. Even Penwith District Council calls us the "Gateway to Penwith" and the business investment in our town and the jobs that will be put back demand a Chamber of Commerce that is in touch with all Hayle's businesses, seeing clearly what is best for the town and provid-

ing the "round table" around which our partners, the Council and the residents, can come to ensure we build the best future we can for all of us, young and old, resident and visitor.

We already have more than seventy member enterprises and have representatives involved in many aspects of Hayle's life. We have the trust and good name of important regional authorities and investors and are considered stakeholders in Hayle's development by local and regional government. As a union of small businesses we have never demanded to have things only our way but just asked to be listened to – after all we had the various ideas needed to start our own businesses so maybe we have some good ideas that will help Hayle! We believe in a united voice and are proud that we

were a founder member of the West Cornwall Chambers of Commerce for which we still hold the Chair.

Our AGM and Dinner is in March and the excitement of Hayle's development and the need for the Chamber to keep its place at the forefront means that for the first time we will have a contested election for executive officer's posts.

Why am I telling you all this? If you run a business in Hayle, join this union of small businesses, have your say and give the Chamber the added strength to influence our commercial future. To everyone else it is a call to get involved in YOUR town, work with Hayle's MCTi to guide this town from the bottom up, support the Councillors who are doing the best for your town or stand for election if you think you can do better! Just do not sit there and do nothing and moan at

PHILP'S

FAMOUS PASTIES

EST



1958

BAKING 7 DAYS A WEEK
FOR THE GREAT TASTE OF
CORNWALL'S
PREMIER PASTY MAKERS
WITH OVER 40 YEARS
EXPERIENCE
VISIT US NOW
AT OUR SHOPS AT-



1, EAST QUAY,
HAYLE
01736 - 755661



1, FOUNDRY HILL,
HAYLE
01736 - 753302



MARKET PLACE,
MARAZION
01736 - 710332

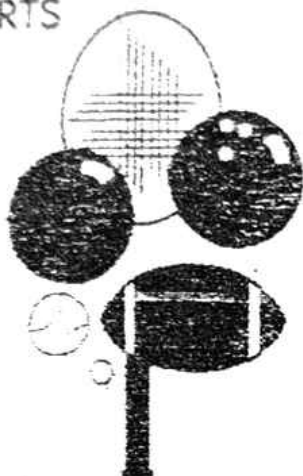


THE SQUARE,
PRAZE & BEEBLE
01209 - 831360

ANGOVE SPORTS

COPPERHOUSE, HAYLE
01736 - 752238

FOR ALL SPORTS
EQUIPMENT
CLOTHING &
FISHING
TACKLE
*
RACKETS
REPAIRED
& RESTRUNG



those who do something – not now, not at the start of the greatest opportunity we've had!

*Jeremy Joslin, Press Officer,
Hayle Chamber of Commerce
01736 754147*

WHY DO I NEED TO KNOW ABOUT CHIROPRACTIC?

I could start by explaining that chiropractic, after GPs and dentists, is the fastest growing healthcare profession in the Western world. I could also add that millions of people have benefited from chiropractic over the last 100 years since its development. I could also say that 1 in 3 people are currently suffering from a

back disorder in the UK at the moment.

Over the next few editions I will cover some of the main issues concerning this healthcare profession. I will also show that it isn't just for those in pain, but everyone should consider "why I need to know about chiropractic". In this edition I will explain what chiropractic is, where it originated from and why it is so important for our general health.

So what is it?

Since its set up in the UK in 1994, chiropractic is now a primary health care profession that specialises in the diagnosis, treatment and overall care of conditions resulting from the spine, major joints, ligaments, tendons and nerves of the body. Most important is the spine. By working on your joints and spine, using hands-on techniques, adjustments can be made to these joints and vertebrae, improving the efficiency of your nervous system. This will allow your body to use its own natural healing abilities to improve your health.

Its origins

The world chiropractic comes from Greece, and means "done by hand". The modern profession saw its growth and development from the beginning of the 20th century, starting in the USA, but soon established in the UK from the 1920s. To qualify as a chiropractor now involves a four year full time science degree course at 3 colleges in the UK, Anglo-European College of Chiropractic, University of Glamorgan, and the McTimoney College of Chiropractic. Each course is recognised as a valid qualification by the governing body,

the General Chiropractic Council.
Why is it important for my health?
 Your nervous system that comprises your brain, spinal cord and spinal nerves, is the messenger carrier between the brain and the rest of your body. Those messages are critical for your general health and well being during your life. Research has shown that any dysfunction of your major joints and spine can have an adverse effect on that nervous system. Chiropractic impacts directly those joints and spine to relieve that stressing. Because chiropractic is concerned with understanding the stresses of the body, help and advice will also be given about preventative steps you can take to avoid further damage and injury.

People of all ages can benefit from chiropractic; babies, children, pregnant women, adults and the elderly. Also if you are suffering from an underlying condition, do not assume you cannot be helped – ask you local practitioner.

Next time

Do I need to hear a crack to know I have been adjusted?

John Christian Tillyard DC
Hayle Back Clinic 01736 759088

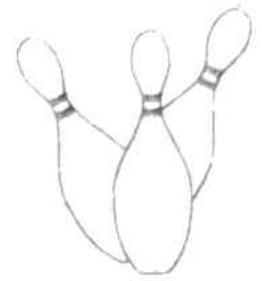
Biz & Bytes 07774 227211
 07974 647524
 01736 755971

Need assistance with your Computer? Let us help with any problems or training. Visits arranged to suit you.

www.bizandbytes.co.uk
enquiries@bizandbytes.co.uk

COMPUTER SUPPORT and TRAINING°WEBSITES°
 TYPING°INTERNET SETUP, PROBLEMS°
 TEMPLATES°SCANNING°PURCHASE AND SUPPLY
 OF COMPUTERS, PRINTERS, SCANNERS ETC.

Country Skittles ...



...welcomes Pump readers of all ages.

4 traditional 9-pin skittle lanes

Restaurant & snack menu available at all times

Roast lunches served all day on Sundays

Fully licensed bar

Target shooting gallery

Crazy golf

Pool Table football

Air hockey Batak

Lots of traditional board games & many other games to play.

We cater for groups large and small, and provide an ideal venue for family get-togethers, birthday parties and works outings.

To get to us, take the B3302 out of Hayle towards Helston and turn right when you see our sign just past St Erth Praze. We are about half a mile up that road.

Booking in advance is advisable at busy times.

For further information ring us on 01736 850209

Barbara Spann

MCFHP MAFHP qualified

Foot Health Practitioner
Clinic and Mobile Services
Trevean, Higher Penponds Road,
Camborne TR14 0QG

Services available for:

- * Routine foot and nail care
- * Corn and callus
- * Hard skin removal
- * Ingrown nails
- * Verruca removal
- * Diabetic foot care
- * All conditions causing foot discomfort



Please contact me if I can help.
For an appointment,
telephone 01209-712717
or my mobile 07899-014321

GAYLE GIG GUIDE

Following her very successful appearance at St Ives Jazz Club last December, Hayle jazz diva Kris Gayle returns to the venue on April 3rd, accompanied by top pianist Viv Rodd and his trio. Other gigs in the area for Kris and Viv include the Watermill Lelant on Friday February 2nd and Penzance Arts Club, Chapel Street, on Saturday 3rd March. Kris also teaches the vocal skills, in a variety of styles, see separate ad. in the Pump.

St Ives Jazz Club ('The last jazz club before New York') continues to grow in national stature, and recently received a plug on BBC Radio 3 when one of Kris's tracks was played on Jazz Record Requests. Sessions are held every Tuesday at the Western

Hotel, St Ives, and forthcoming attractions include a return visit of the wonderful pianist Julian Joseph (date to be confirmed), also the outstanding UK trumpeter Steve Waterman, who will be accompanied on 27th February by Viv Rodd and the talented young musicians of the Truro College Jazz Degree Ensemble. For further details of forthcoming attractions, contact 01736 796082, or website www.stivesjazzclub.com

Goudie Charles

SINGER & PFAFF SEWING CENTRE

Authorised Singer Service Centre for Cornwall

All makes serviced

11 ST. JOHN STREET, TRURO

01872 225168

Mr & Mrs D.M. Girling

An Enigmatic Meeting

Readers of the Pump who are interested in the classical composer Edward Elgar may like to know of something which happened to me when I least expected it.

I had decided to visit Elgar's birthplace, a small cottage at Broadheath near Worcester. I found it very interesting and was about to leave when the curator suggested that if I would like tea and cakes, there was a bungalow down the road. I followed his directions and was soon sitting at a table, on my own, as there were no other customers. (I should perhaps mention here that I had with me a biography of Elgar, with photos of him

and members of his family.) A lady came over to take my order. I suddenly realised that this lady was none other than Elgar's daughter. She signed my book under a photo of her with her father. Her signature 'Carice Elgar Blake' is for me a treasured memory of an exciting moment, and one which I certainly did not expect.

Gordon Chapman, Hayle

Computer / Laptop Problems?

I can restore your computer or laptop to full working order for a fantastic price.

NO FIX, NO FEE.

Call today for a FREE, no obligation quotation.

Call TeeCeeTech TODAY 07730 283433

PRATT'S MARKET CHRISTMAS FUN DAY

Christmas was celebrated in style at Pratt's market and the traders would like to thank everyone who came to their special fun day and helped to make it such a big success

While fruit punch and mince pies were served to adults, the children

Vehicle Transport and Recovery



Fast & friendly service

Service & M.O.T. work undertaken

Malcolm Hendra

Mobile: 07768 35 44 33

Home: 01736 754213

could visit Santa's Grotto - specially constructed by Paul and Heather Dyer of H.D.Framing in a unit of the Foundry Gallery Complex. Special thanks go to Santa Claus (who looked suspiciously like Bob Mims) who handed out gifts to the children whilst their photos were taken by resident photographer, Andy Parker. Lindsey, of Beautiful U and Caron of Cazzie's Nails, together with Tempt-



W. J. WINN

FUNERAL & CREMATION DIRECTORS
PRIVATE CHAPELS OF REST
24 HOUR SERVICE



69, FORE STREET
HAYLE
01736 752124

&

TRENWITH TCE
ST. IVES
01736 793029

SEAMS GOOD

Friendly, Enthusiastic, Good Rates

49 Madison Terrace, Hayle



- ✂ Dresses, zips, trousers, suits
- ✂ Curtain-making
- ✂ Costume-making



Just call for a quote!

Berni Murphy, Seamstress

01736-755818 / 07731-080948

mmurfies@tesco.net

ress Lingerie, organized a 'Santa Hunt' and a raffle. Graham Whitford of Cormelian - Little Shop of Treasures donned his storyteller's hat to recount tales old and new, whilst Sally and Pat Jefferies from Brother Wolf and The Model Railway Shop, Peter and Richard and other members of the Railway Cub, were on hand to show just what goes on behind closed doors on Monday and Thursday evenings at Pratt's Market! All the traders took part in the festivities and donated raffle prizes.

From the sale of raffle tickets and other events such as 'Have a go on a potter's wheel' in the Foundry Gallery Complex, £124 was raised for St. Julia's Hospice and the Children's Hospice South West.

LINK INTO LEARNING

Upgrading one's skills has never been so much fun. At Link into Learning we believe learning can be enjoyable and satisfying. We have computers and tutors to help you every step of the way. Pauline, our Tutor Organiser, will be happy to talk to you about your individual requirements.

Link Into Learning
The Community Centre
58 Queensway
Hayle TR27 4NX
Tel: 01736 759051

Hours of opening
Tuesday 1pm – 4pm, 6pm – 9pm
Wednesday & Thursday
9.30am -12.30am, 1pm – 4pm
Friday 9.30am – 12.30pm

Combined Tree Services

TREE SURGEONS

24 Hour
Emergency Call Outs
Welcome!

Fully Insured

FELLING.
DISMANTLING.
REDUCING.
THINNING
Etc..

Top Quality Tree Surgery at Competitive Prices!

Tel: 07790 206316 fax: 01736 755966

HAYLE AND DISTRICT BOWLING CLUB

With the building of the new artificial bowling green in Hayle, the club will be in a position to welcome any new bowler or any established bowler who may be moving into Hayle, to have a go when

we get to April.

Our next task is to get the changing rooms and toilets in place by April and then the club will be functional. We have entered the county and local leagues and to date have over 50 people for our membership but more are welcome. The club will be trying to start a junior section for those aged 10 to 18 and will provide the necessary training. We propose to have equipment available at the bowling green for those who wish to have a go. The good news is that membership for under 18 year olds is free!

At present the weather has not helped with so much rain, as more work has to be done in clearing the weeds from the surrounds and to get space ready for the changing rooms etc., but we, like many other people, hope that it will be dry very soon so

that work can start.

If anyone can help or wishes to play please contact:-

Len 01209 216660

John 01736 753565

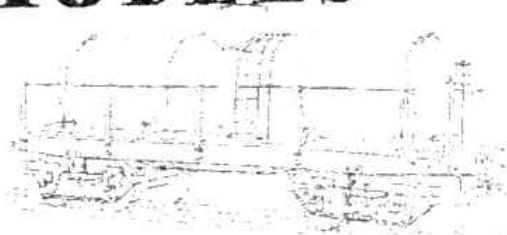
Tony 01736 752686

ST. MICHAEL'S APPEAL

St. Michael's Hospital is desperately seeking paperback or hardback books to sell. All proceeds will go to the hospital. You can take the books directly to the hospital reception, or they can be delivered to my house at 'Riverside' 5, Brookway, Hayle, or they can be left with Paul and Heather Dyer at Foundry Gallery in Pratt's Market (the Pump's temporary home!).

Pam Stephens.

GREAT WESTERN SCALE MODELS



Dapol OO and N Gauge Model Railways

Bachmann – OO, American & Spectrum

Aristocraft – Special orders only

Athern – HO American Locos only

Gaugemaster Controls • Bachmann ON30 – *now in stock*

• Meahano American Garden Railways

(many second-hand available)

3 Pratts Market, Foundry Square, Hayle TR27 5AR

01736-757679



ORCHID GARDEN SERVICES



Tel: 01736-752031
Mobile: 07834-241890

If you require a friendly, reliable service at competitive prices for all aspects of garden maintenance, including lawn cutting, weeding, hedge cutting, soft landscaping, patio laying, etc., then give us a call for a free quotation.

Regular and one-off work considered.

We are fully insured.

Cornish campaign.

Directors and staff at Paradise Park are over the moon at the news that the EU has agreed to a permanent ban on the import of wild-caught birds.

The Park and the charity it established at its home in Cornwall, the World Parrot Trust, has been campaigning for years to bring about this change in legislation.

Alison Hales said 'We are delighted that the pet trade in Europe will no longer be the reason why millions of wild birds are trapped every year.'

The USA stopped importing wild birds in 1992, and since then Europe has been responsible for 90% of this international trade. Bird conservation experts estimate that roughly half of

the birds harvested for sale in the EU died during capture and transport.

The World Parrot Trust gathered a coalition of organisations which lobbied for the temporary ban to be made permanent – over 240 signed up. It also funded new research into the consequences of the bird trade, commissioned photographs, wrote reports for the EU and attended meetings, and delivered its petition to Downing Street.

Paradise Park started the charity to help rare parrot species, and improve welfare standards for pets. Alison said 'Parrots are very demanding, and imported birds often turn into problem pets. This decision was pushed along by the threat of bird flu, rather than on animal welfare or conservation reasons, but in the end the right choice was made. It is a victory for common sense.'

Local MP Andrew George assisted the campaign. As well as visiting Paradise Park and enlisting the help of Liberal Democrat MEPs and Peers, he also put forward an Early Day Motion in parliament to bring the subject to the attention of MPs.

Alison Hales

Director, Paradise Park
ali@paradisepark.org.uk
01736 753365

www.paradisepark.org.uk

Home of the World Parrot Trust

www.worldparrottrust.org

Phillack Craft and Flea Market

The Friday markets at Phillack Church Hall will be starting again at Easter but with a celebratory

BIG BANG!

Open over the whole of the Easter weekend from 6th April Good Friday 9th April Easter Monday, the market will have a wide variety of goods, old and new, together with refreshments and cakes on sale at very reasonable prices.

Gill at Cormelian, Pratt's Market
01736 755890 or 0797 400 0747

Re-Cycling - RWC.

A new facility for re-cycling has opened up on Hayle Terrace, behind the Central Garage and Neil Wade's.

It is called RWC and you can buy items that had been taken to the St. Erth skips



SO YOU THINK
YOU'RE MICKY
MOUSE OR
DONALD DUCK.
HOW LONG YOU
HAD THESE
DISNEY SPELLS

Family Matters • Wills & Probate Property • Business Matters

FREE Conveyancing Estimate • FREE 1st Interview for Family Matters • FREE Conveyancing Guide

THS

Thurstan Hoskin SOLICITORS & J R Lloyd + Co



Call for
your FREE
Conveyancing
Guide

FAMILY MATTERS

Divorce & Separation
Domestic Abuse
(Male or female specialist available)
Division of Property
Children Issues

WILLS & PROBATE

Advice for the Elderly
Enduring Powers of Attorney
Trust & Inheritance Tax Planning
Will Drafting

BUSINESS

Business Leases
Sale & Purchase of Business

PROPERTY

Full Conveyancing Service



LAWYERS
SPECIALISTS
BUSINESS



Altogether a better service from specialists solicitors
info@thurstanhoskin.co.uk www.thurstanhoskin.co.uk

HAYLE 33 St Johns Street 01736 754075

REDRUTH Chapel Street 01209 213646

ST IVES 5 Fernlea Terrace 01736 797335

HELSTON Cross Street 01326 555800



O'DELL SIGNS

OF ALL TYPES
Signwriting, Perspex
Plastic, Engraved,
Magnetic, Posters,
Illuminated signs,
COMPUTER CUT
VINYL LETTERING
for Vehicles & Signs

Embroidery
for
Businesses & Clubs

HAYLE 01736 753656

1, Turnpike Road, Connor Downs.

Plants on the Towans No 14 - Spagnum Moss

This useful little plant is so prevalent we might not notice it. However if you're on the Towans and you find your footsteps a little more bouncy than usual (and you're not on steroids!) it's because you're walking on sphagnum moss. Every part of the plant is permeated with minute tubes and spaces, resulting in a system of minute capillary tubes, having the effect of a very fine sponge. This plant is not dependent on soil water but can also take it from the atmosphere. This absorbent property (it can hold up to 20 times its own weight in water) along with its antiseptic one makes it an ideal surgical dressing, used in German hospitals for the last 30 years and extensively by combatants in the wars. In the war the British

government bought tons of garlic bulbs, the diluted juice of which was put on swabs of sphagnum moss and applied to wounds.

The Kashmiri and Esquimaux have used it from time immemorial, an old writer says: "The Lapland matrons are well acquainted with the moss. They dry it and lay it in their children's cradles to supply the place of a mattress, bolster and every covering, and being changed night and morning it keeps the infant remarkably clean, dry and warm."

These days it's better known by gardeners for hanging baskets and mixed with peat fibre for growing orchids and bonsai.

When the moss dries and is compressed it forms peat bogs, and dried blocks thereof are still used as fuel in Ireland and elsewhere.

A word to the wise: it is contrary to mandate to remove any plants from the Towans!

Michael Locke

Carbis Bay Physiotherapy

Damian Coia BSc MCSP, SRP

Chartered Physiotherapist

Member of Society of Orthopaedic Medicine

BSc Hons. Physiology & Biochemistry

SPORTS INJURIES • BACK & NECK
PROBLEMS • MUSCLE & JOINT PAINS

01736-740088

FOOTSTEPS



5 Penpol Terrace, Hayle

01736-757735



Specialising in wide-fitting footwear for men & women. All dancewear: ballet, tap shoes, etc.

New spring styles arriving daily.

Index of Advertisers

1st Choice Paving...23
All Aerials...26
Angove Sports...30*
Barton Print...28
Bennett, John...27
Bigglestons...40*
Biz & Bytes...31
Blushhh...8
Button, Des...22
Café 1...7
Carbis Bay Physio...38
Cliffords Plumbing...17
Colin's M'ket Garden...18*
Copperhouse Jewellers...4*
Country Skittles...31
Cranford House...14
Farm Shop...4*
Fernleigh..11

Footsteps...38*
Gardener./Handyman..18
Great Western Models..35
Haven...13
Hayes, Roy...19
Hayle Holistic Clinic...39*
Hendra, Malcolm...33
Heyl's Kitchen...3*
Home & Away Cleaning.7
H.O.S.C....22
J C Electrical...16
JT Crafts...21
Keast, F L...6*
Kernowek Creations...21
Kris Gayle...8
Lamb & Flag...4
Lello, Terry...27
Loose Covers...4
Murt's Television...24*
O'Dell's Signs...38*

Orchard, Alan...25
Orchid Garden ...36
Page, Vanessa...21
Paradise Park...9
Penpol Garage...17
Pet Portraits...28
Philp's Pasties...29
Planet Baths/Kitchens...5
Plantech...15
Seams Good...34
Singer & Pfaff...32
Spann, Barbara...32
Suites & Sofas...40
Tamarisk Care...12
TeeCeeTech...33
Thurstan Hoskin...37
Tree Surgeon... 34
Wade, Neil...10
Winn, W.J...33
Yoga...15

You can pick up a copy of the Pump at those advertisers marked with an * also at Hayle Library, Day Care Centre, Community Centre, Bodriggy Health Centre, Copperhouse P.O., Forbuoys, St. Erth P.O., Connor Downs P.O. and many other places in Hayle.



Hayle Holistic Beauty Clinic

77, Mellanear Close, Hayle.

01736 755656

*We wish all our clients a Merry Christmas
and a Happy New Year*

All beauty treatments (Face & Body) by award winning therapist, RAMA
Specialised cosmetic treatment (Collagen, Thread Vein treatments)
Electrolysis, Ear candling, Ear piercing
Gift Vouchers . Free Consultation.
Special rates for senior citizens & school children.

BIGGLESTONS

TRADING IN HAYLE FOR OVER 100 YEARS

Please try us first for the best of Hardware,
Ironmongery, Kitchenware, Paraffin
and Garden Supplies.

01736 752219

*Summer, Autumn, Winter, Spring
We can supply 'most everything*

SUITES & SOFAS WAREHOUSE

Unit M, St. Erth Industrial Estate, Hayle, TR27 6LP

**LARGE SELECTION OF LEATHER
AND FABRICS TO ORDER**

*ALSO FROM STOCK, ENDS, ONLINES,
ETC. AT CLEARANCE PRICES*

For details of our current
offers phone

01736 759586

07779 760686

or visit our warehouse daily

between 11am-4pm WHEN WE ARE OPEN TO VIEW

