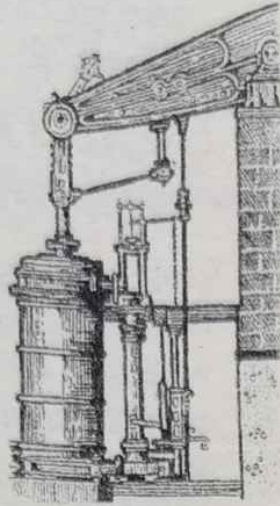


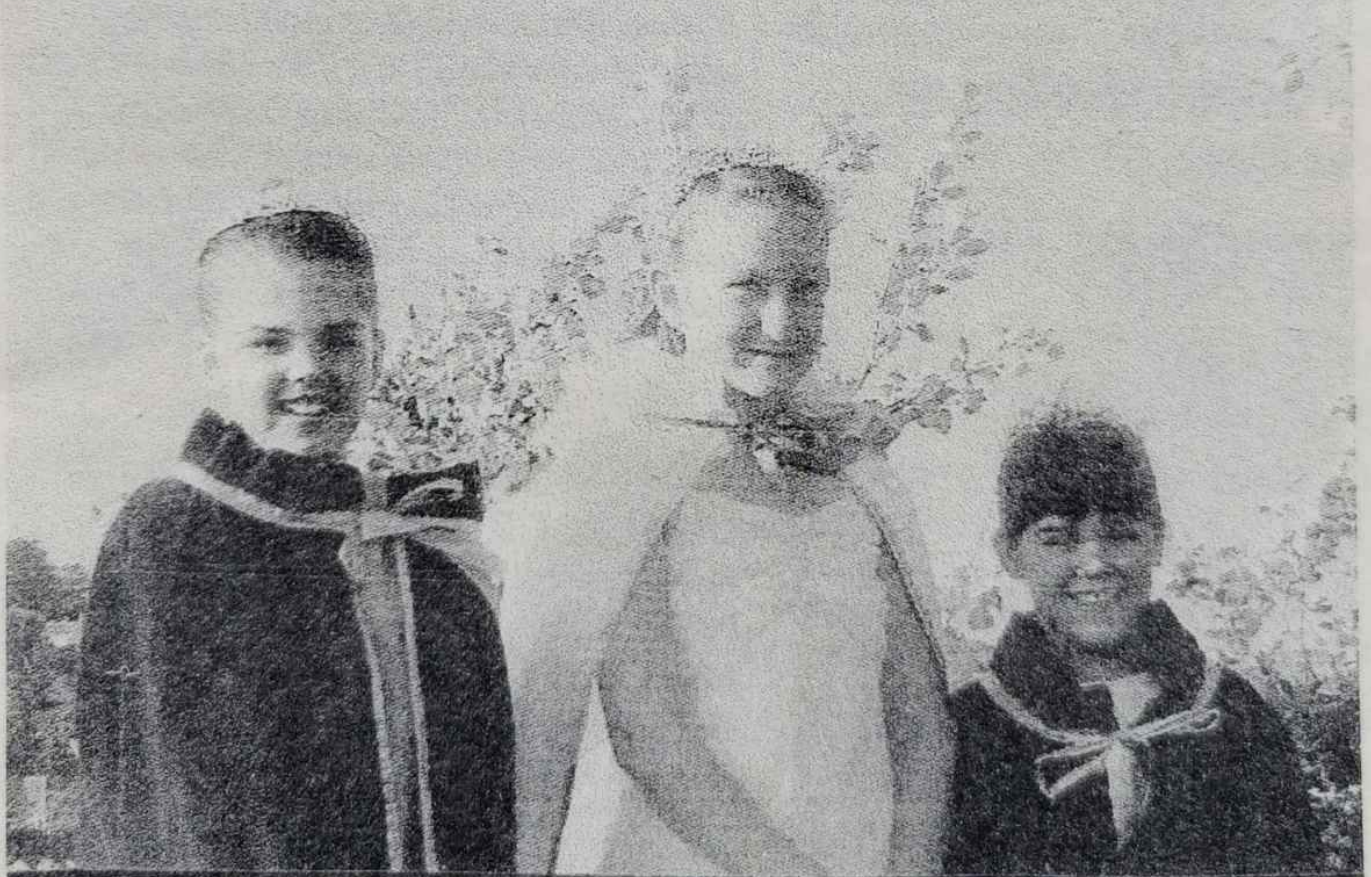
ISSUE 77
AUG/SEPT
2007



HAYLE PUMP NEWSLETTER

Circulation 2500 FREE copy, please take one. Made possible thanks to our advertisers.

Hayle Summer Carnival August 4 2007



This year's Carnival Queen & Attendants.

Imogen Goldsworthy, Demi Beare, Kyra Goldsworthy

**Hayle Pump Newsletter, Unit 9, Pratt's Market,
Chapel Terrace, Hayle TR27 4AB**
email: krisandgoudie@btinternet.com

Advertising Rates

Half page (130 x 95mm)	£22.00
Quarter page (63 x 95mm).....	£12.00
Eighth page (63 x 42mm)	£7.00

If you wish to advertise in the Pump please contact Donna Anton at the phone no. / email below

Editorial Team Members

Donna Anton

01736 753184

donna@donna-anton.com

Tim Appleton

Goudie Charles

01736 757351

Don Metcalf

01736 757720

Joy Scott-Mance

Jeff & Sarah Turk

35 Penpol Terrace Hayle
TR27 4BQ, 01736 752319

Roger Winterburn (Secretary)

01736 756393

Closing date for next issue:

20th September 2007

(advert subject to space availability)

You can leave your news, letters, notices etc. at our unit in the market, or with any of the team. You can also use any of our drop-off points:

at Foundry:

Biggleston's Hardware

Colin's Market Garden

at Copperhouse:

Angove Sports

Jolly Bodger

The Hayle Pump would like to remind readers that items, or articles and Public Notices are accepted as points of view and are not necessarily the opinion of the Newsletter Team. Correspondents are reminded that all material submitted must be signed with their name and address, and if possible, telephone number for validation. This will not be printed if you don't wish it to be. We reserve the right to refuse or edit items sent to us.

HAYLE PUMP

SUBSCRIPTION SERVICE.

For those readers who would like a Pump sent to family or friends elsewhere in the UK, or local people unable to get into Hayle to collect a copy, we operate a postal subscription service. Simply send us the delivery name and address CLEARLY PRINTED, together with £2.50 to cover the cost of stamps and envelopes, and we will send a year's issues (6 copies) of the Pump as soon as it is published. (UK addresses only—please make cheques/postal orders payable to "Hayle Pump Newsletter")

Hayle Summer Carnival 2007

Hayle Carnival Committee recently held its search for a Carnival Queen at Hayle Day Care Centre.

The night went well with a high number of entrants. All judges commented that it was extremely hard to pick a winner due to all the entrants having so many good qualities. However, there has to be a winner and this year's Hayle Carnival Queen is Demi Beare, age 10. The Carnival Queen's Attendants are sisters Imogen and Kyra Goldsworthy, age 8 & 10 respectively.

This year the Carnival is being held on **Saturday August 4**. Following the huge success of last year's Illuminated Winter Carnival, which showcased fabulous colourful floats and excellent walking entries, the Carnival Committee hope this year's event will be bigger and better than ever.

Judging will be at 6pm at Hayle Recreation Ground and the procession will start at 7pm.

It is hoped there will be a wide array of entries and entry forms are available from the chairman,

Richard Horwell on 01736 752597. The committee would also be grateful for offers of help with the street collection and event marshals.

Come along and show your support for this community event and make this year's Carnival one to remember.

PASSMORE EDWARDS INSTITUTE

13-15 Hayle Terrace, Hayle, TR27 4BU



MEETING ROOMS FOR HIRE

Passmore Edwards Room £16 per session

Boardroom table seats 16, plus seating for an additional 12. Ideal for business and community meetings. Approx. 7.5m x 5.5m.

Front Room Downstairs £10 per session

Chairs and tables for 40. Suitable for informal meetings, arts & crafts, etc. Adjacent to kitchen. Approx. 7.5m x 5.5m

Large Room Upstairs £12.50 per session

With raised platform. Can seat 100 for lectures and large meetings, or for use as an exercise room. Approx. 13m x 5.8m. *No disabled access.*

There are three sessions per day:
morning, afternoon & evening.
Kitchen facilities by arrangement

For bookings and more information contact:
01736-756055

Hayle in Bloom

Well, it's now in the lap of the gods. The judges did their tour of Hayle thankfully in good weather on Wednesday 18 July so now we keep our fingers and legs crossed for the verdict at the presentations, which for the first time are being held in Cornwall at the Tregenna Castle Hotel, St.Ives on Thursday 20 September.

Despite our awful summer weather the flowers and hanging baskets are surviving surprisingly well. I thought it would be good to give the people of Hayle an insight into the programme on judging day so I hope you will find it informative.

The Farm Shop

31 Penpol Terrace

Hayle

Open 6 days a week

8am - 5pm

***For all your local produce,
fruit, vegetables, plants &
flowers, free range eggs.***

Cornish potatoes.

Now in:

Cornish New Potatoes

Local Strawberries

Judging takes two and a half hours and this year our judges were Tony Moore and Ruth Miles. We met them at McDonalds at 10.30am, starting with our Mayor of Hayle, Mr Paul Birch, who showed the judges the Hayle Town Council Cup, which was presented to Hayle in Bloom during the Annual Electors Meeting in April. We were joint winners with Hayle Life Saving Surf Club. Our Secretary, Margaret Tanner presented the judges with a portfolio of our achievements during the year and the judges also met the street cleaning team, dog enforcement officer, team maintenance grass cutters, the Scouts as it is their 100th year anniversary, Douglas Clarke, manager of McDonalds, Caroline Sargeant, Regeneration Officer re Community regeneration and Loggans Mill Regen-

eration Scheme which is new housing including affordable housing for young local people.

The tour commenced at 10.45am, and McDonalds manager, Douglas Clarke spoke of encouraging sustainable planting, sub-tropical scheme, litter bins, picnic benches, and they also litter-pick the bridge over the road and provide and empty a litter bin on the other side of the bridge. On site re-cycling banks and Cornish stone walling make it an attractive, clean and well maintained site.

Next was the Travel Lodge and Brewers Fayre Motel and that section finished with the new shopping centre, with Boots the Chemists, Next and **AT LAST, M & S! Hooray!**

The judges did a tour (twice) around our magnificent Loggans Roundabout and took note of the inner structure tree planting sponsored by Dolphin Stairlifts. Also they looked at the picture bed which this year celebrates the 100th year of the Scouts, and also the rare wildflower – Western Ramping Fumitory.

The judges took note of Carwin Court, Lidl's Supermarket (industrial site with attractive sustainable planting) They noted the dog bin scheme throughout the town. Then passing some private gardens, Loggans Fish Bar, the Women's Institute bed planted and maintained by the members, and Marion Coombe's neat and tidy hedge and lawn and colourful flower border. Next door was Roskilly's Forge with patio pots, ornamental ironwork and good use of flintstone to show off the ironwork.

Next came the start of the Amberol

scheme – 50 pairs of units throughout the town.

The Recreation was visited and the judges saw the wonderful new Skatepark costing £280,000, money well spent as the skaters use and appreciate it very much. The judges saw the landscaped herbaceous borders, the new basket ball area and youth shelter and met representatives from the Youth Club. They also saw the tennis courts and play area and met Mr C Fanelli re safety surfacing.

Next they visited St. Mary's Gardens, Glebe Row, Co-operative Supermarket sustainable planting, shrubs and trees.

The judging party then went through Fore Street taking note of the hanging baskets and also the flower tubs outside the shops. These

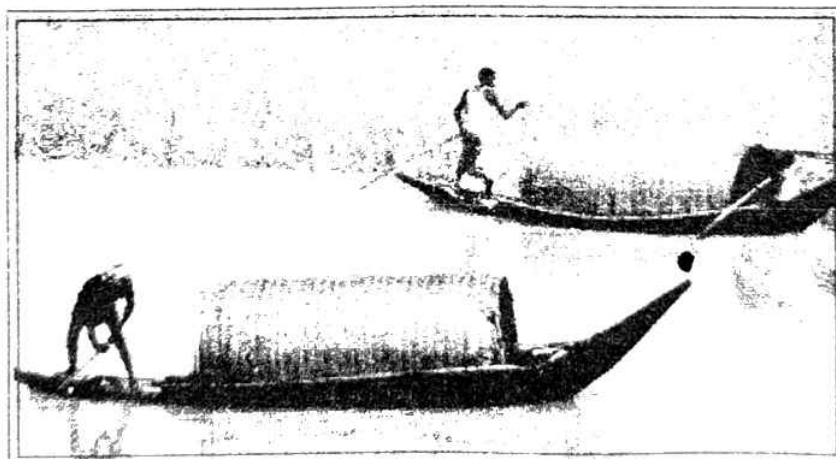
are supplied by Hayle in Bloom free of charge, (although donations by the shops are always appreciated!) The beautiful display of hanging baskets at the Cornish Arms Public House was noted, then the next port of call was Commercial Road Car Park where there was much to see with sustainable planting and to meet the re-cycling officer, Mr Mike Toms, also the refurbished public conveniences.

They then went across to Hayle Library and met the Head Librarian, Sally Faulkner, who discussed the very exciting new project in partnership with Hayle in Bloom, to create a Wildlife and Reading Garden on a space behind the Library with funding acquired from the Big Lottery Fund of £7,450. They also saw the "Lions Boat" outside the Library

G r a m e e n T a n d o o r i

Restaurant & Take-Away

... *Bangladeshi/Indian Cuisine* ...



01736-758470 01736-758460

4 Hayle Terrace, Hayle • Fully Licensed & Air Conditioned
Open 7 days a week: 12-2pm & 5:30-11:30pm • www.tscint.co.uk

F.L. KEAST

F.B.D.O. Dispensing Opticians

**18 Commercial Road,
HAYLE
01736 753145**

**21 Alverton Street,
PENZANCE
01736 366106**



**Light intelligent lenses
For UV intelligent people**

Rodenstock ColorMatic™ Extra

Range of stylish frames

Single Vision £98.00
complete
Variofocals £155.00
Complete

Rodenstock. As you see

which is looked after by members of the U3A. (University of the 3rd Age)

Passing more beautiful private gardens along Commercial Road, the War Memorial, Passmore Edwards Institute, Hayle Terrace we came to Railway Walk and King George V Memorial Walk. Starting off at the Swimming Pool, the judges met our Deputy Mayor and Mayoress, John and Lorna Coombe, who it must be mentioned along with Councillor Dick Horwell do so much work there, and anywhere else where needed.

They met with members of Heather Lane Nursery, who planted up, looked after and delivered our tubs, for us to distribute throughout the town.

Jenny Parker, Assistant RSPB Warden met the judges and told them about the nature reserve.

They then met Ann Foreman who co-ordinates all the volunteers in the Adopt-A-Plot scheme, of which there are now 27 members. (If you would like to join in, ring Ann on 754452) Richard and Sally Dungey were very proud to show the judges their on which they have worked very hard at Merchant Curnow's Quay.

Along the Memorial Walk the judges noted Cllr Dick Horwell's Decorative Lighting and were informed of our glorious Christmas Lights, also along the Walk the judges saw the sub-tropical planting and met Ruth Atterbury-Thomas and Pam Northover at the Touch and Scent Garden for the visually impaired.

The judges looked at eight Adopt-A-Plots including the Penpol

Scheme and met the Lions Club volunteer litter-picker.

They saw the display of hanging baskets etc. at the Royal Standard Public House and the 'Lions' Boat outside Philp's Bakery.

Penpol Terrace and Penpol Gardens are looking really beautiful and the judges met Margaret Tanner and Ray Wyse representing Hayle Chamber of Commerce and Mervyn Sullivan, who talked about Rick Rescorla at the Medmorial.

Passing the raised beds, triple planter etc. at Lloyds Bank we then went to Foundry Square Car Park, toilets and re-cycling banks and then made our way to Millpond Gardens to meet Georgina Schofield and Pat Humphries with the local school children. Taking in the Millponds and Millpond Avenue the judging party next visited Marie Therese House to see the Inner Garden created and maintained at his own expense and in his own time by Care Assistant, John West.

Paradise Park was the final port of call and once again they met our Mayor and also the head gardener at the park, Chris Griffen. After seeing the new 'Butterfly and Wildlife Garden' and other important planting and landscaped schemes it was time for the traditional 'Photo Call' with the Cornishman Newspaper and St. Ives and Hayle Times. Also Jeff and Sarah Turk presented the judges with some copies of the Hayle Pump Newsletter.

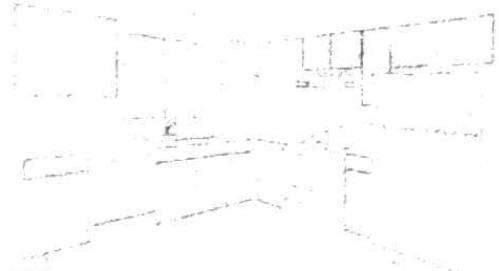
With the judging completed we were invited to join the owners of Paradise Park, Alison Hales, Nick Reynolds and Mrs Reynolds to enjoy

FOUNDRY INTERIORS

Kitchens & Flooring

Tel: 01736-755095

Mobile: 07894-814787



- ▶ Why not give your old kitchen a facelift?
- ▶ Huge range of doors, worktops & appliances professionally fitted
- ▶ Complete kitchens also supplied custom-built with rigid 18mm colour-coordinated cabinets
- ▶ Laminate flooring a speciality
- ▶ For friendly, personal service, call Andrew on either number

Café 1

At St. Erth Industrial Estate
alongside the A.30.
Ample Free Parking.

New opening hours—early morning
till 6pm

All day breakfasts
Lunchtime specials
Cream Teas & Light Bites
Takeaways
Homemade bread, pizzas, cakes
and pastries.

Coffee & speciality teas

01736 756123

R	ROY
H	HAYES
G	GLASS

*For all your glazing needs
Over 40 years' experience*

We've moved!
Unit 2, Pvkemow, Penpol Avenue
Hayle TR27 4NQ
- Good parking -
Tel/Fax: 01736-754023
Mobile: 07880-530795

a really delicious buffet lunch which they very kindly donated to us and for which we are very grateful. Among our guests was Neil James from Hayle Town Council who with Town Clerk Eleanor Giggall, do so much in helping Hayle in Bloom. We also had a chance to view the lovely paintings done by local schools that entered the competition's Penwith in Bloom theme of 'Wildlife', sponsored by Paradise Park.

The judges were pleased to meet Councillor John Bennett who designed Hayle in Bloom's website – www.hayleinbloom.co.uk – and who came with his laptop to show them.

I would like to thank everyone who helps Hayle in Bloom in any way to enhance our town and keep it looking so lovely. Special thanks must go to our wonderful gardeners, Mike

Alvin and John who we admire so much for all their hard work and dedication, also to Brian Hosken and Jackie Mace of Penwith District Council, and also Hayle Town Council. Lastly, sincere thanks to Nick and Alison at Paradise Park which is a really lovely place to take the family for a good day out and is a fantastic place to eat in the picnic area or the Otter Café.

We will be doing it all again for the 'National' judging on Wednesday 01 August and we will be so grateful to everyone to do their bit in keeping our town litter and dog fouling free. It makes such a difference, and thank you to all the people who keep their gardens looking so beautiful.

*Marjorie Roberts, Chairman
Hayle in Bloom*

Kate DeWreede *Guitar Tuition*

Acoustic, Electric & Bass
Guitar Lessons

Music Theory, if required

Tel: 01736-753709



“Anyone for tennis?”

Out of the blue, after a lapse of many years, I was invited to play table tennis for fun. I thought 'Good, another way to keep fit!'

It cost me £2.99 for a bat - I already had the shorts - and I was ready to go. I enjoyed it so much that I kept going back and made many new friends. (Warning -

once you start you will get hooked!)

I had to travel to Camborne each week so I thought I would join a club in Hayle, but there wasn't one. Solution – start one. So I have found a venue and have three tables and some bats; now all I need is men and women to join me as I can't play on my own.

Hayle Table Tennis for Fun is at Hayle Methodist Church Hall every Friday from 2pm – 5pm and costs £1.50 per session. There is no membership fee and it is open to adults of all ages. If you haven't played for a long time come and brush up your skills; if you haven't played before, come and have a go, you will be made very welcome.

If you would like further details please contact me,
Terry Hutchings, 01736 755757



I WENT TO SEE THE
DOCTOR ABOUT
WIND AND HE GAVE
ME A KITE.

J C ELECTRICAL

Your complete 24hr Electrical Service

City & Guilds Qualified

Tests to 16th Edition BS7671

Rewires, New Build, Lighting, Extra Sockets,
Showers, Heating

Prompt Reliable Service
All Work Guaranteed

Free Estimates
Part P' Registered

Hayle 01736 754543
Mobile 07739 577 549

EIC

DOMESTIC
INSTALLER



Champs Helylysées



KIND OF CORNISH



At the time of writing, the Hayle townscape redevelopment alongside the viaduct is nearing completion. What a transformation! With its wide pavements, nay, boulevards, elegant new bus shelter and nearby open air café, the new Foundry Square has truly taken on a distinctly continental feel, and doubtless some pavement furniture will soon be arriving to enhance the effect.

Now if only someone in authority could do something about the awful tatty sheets periodically draped over the garden railings.....

Taurufax

Q. What must you know to be an auctioneer? A. *Lots.*

This issue two very different new jazz CDs have landed on the Pump desk which serve to illustrate the terrific scope and quality of the jazz which is currently being played in our region.

Hayle-born modern jazz pianist Viv Rodd is arguably Cornwall's best ever jazz musician – his CV includes appearances with American legends Charles Mingus, Sonny Rollins and Clark Terry, and he is the first choice pianist for the visiting London-based musicians appearing at on a regular basis at St Ives Jazz Club. I first heard Viv's playing when he was a teenager; he always had great tech-



DO IT FOR YOU

FOR ALL YOUR GARDENING NEEDS

NO ONE BETTER

JUST CALL

MARTIN

01736 757185

mobile

07866 446151

nique, and through the years this aspect of his playing has got better and better. Additionally, with maturity and experience, he has accumulated tremendous jazz feeling.

Viv's new trio album 'Sketches' is in my opinion his best yet, taking his music to a new level, and he is superbly supported by Pete Kubryk-Townsend on double bass and his son Damian Rodd on drums.

Several of the tracks are linked by very effective improvised solo piano sketches, giving the album a feeling of unification and identity. One of the best tracks is Viv's original 'Ferdinand's Rhumba', a tune which apparently came to him when he was perched precariously on a moving camel in Tunisia. (I kid you not.) Other delights include the standards 'Beautiful Love' and 'Bye Bye Blackbird', as well as a soulful solo version of Thelonious Monk's 'Blue Monk' and a swinging trio version of Wayne Shorter's 'One by One'. The album ends with a nod to Viv's Celtic roots with his version of 'Three Knights', a traditional Cornish theme.

He is on absolutely top form on this release, as are his fellow musicians. And apart from his superlative drum work, Damian Rodd was also responsible for the marvellous sound engineering and mixing. I thoroughly recommend this album to all lovers of jazz piano – you won't be disappointed! (49 mins, £10. Further details and sample track on website: www.myspace.com/vivrodd)

For those who prefer their jazz to be more traditional, fear not, for a new release, 'Come Along', has arrived from the Great Western Jazz

Fernleigh BED & BREAKFAST

En-suite, Colour TV,
Coffee & Tea making
Facilities in all rooms.

NON SMOKING •

26 COMMERCIAL ROAD
HAYLE
CORNWALL
TR27 4DG

TEL: 01736 752166

mikelynreffold@fernleigh.fsbusiness.co.uk

LYN & MIKE REFFOLD

JOLLY BODGER WAREHOUSE

77 FORE ST
HAYLE
01736 752091



WE STOCK:
BLACKFRIARS
PAINTS &
PRODUCTS.

FLO GAS

CAMPING GAZ..

HARDWARE,

GIFTS & SOUVENIRS

AND MUCH MUCH MORE!

HOUSE & CAR KEYS CUT



CLIFFORDS

PLUMBING

and

HEATING

For all your plumbing and heating needs

From a dripping tap
to a complete bathroom
or full central heating

Friendly, reliable and tidy service

01736 755170

07761 938183

Company. This features such stalwarts of the local trad scene as Bob McTeare (trumpet/flugel/vocals), John Lancaster (clarinet/saxes) and Paul Hawkins (trombone), ably supported by Dan Roach (guitar), John Chapman (bass guitar) and Bobby Stephens (drums). The material ranges across the traditional and swing styles, with even a nod to modern jazz in the form of Horace Silver's churchy classic 'The Preacher'. The opening track, Jelly Roll Morton's lively 'Wolverine Blues' sets the pace; amongst other highlights are the Duke Ellington tunes 'Mood Indigo', 'Caravan' and 'C Jam Blues', and Bob McTeare contributes a typically relaxed vocal on Fats Waller's 'Keeping out of mischief now'. The arrangements are very well crafted, for example the old trad war-

horse 'Struttin' With Some Barbecue' is dressed up most imaginatively as a bossa nova. (Samba With Some Barbecue?) Although the main focus is on the excellent front line instrumentalists, guitarist Dan Roach contributes a telling solo on Gershwin's 'I'm Bidin' My Time', and the final riotous version of 'Come Along Please', with Bob's vocal, signs the album off on a high note.

This is a very lively album, and the Great Western Jazz Company's enthusiasm for their music really comes across well. All lovers of trad and swing jazz should get out there and buy it. (63 mins, £10. Website: www.greatwesternjazzco.co.uk)

Both of the review CDs, and many other items by Cornish and Cornwall-based artists, as well as a large selection of classical music, jazz and nostalgia, can be purchased from:-

West Penwith Music

Union Street

Penzance

Tel. 01736 364440

Goudie Charles

THE PAINTER

**INTERIOR & EXTERIOR
PAINTING & DECORATING**

FREE QUOTES

B.J. WEBSTER

01736 874828

0779 167 3216



*Phillack Craft and Flea
Market*

The popular Craft and Flea Market, regularly held on Fridays at

Phillack Church Hall, has added another dimension to the varied goods on offer.

Established in 2005, not only have collectors, crafters and bargain hunters been catered for, but there have also been various additions for the 'food conscious' buyer.

Homemade jams, marmalades and chutneys, cakes, filled rolls and bacon butties have been tickling people's taste buds nicely for a while and now we are pleased to add home-grown vegetables, fruit and free range eggs for sale, plus a regular supply of plants and flowers.

The market is open every Friday 10am - 4pm (except 4th August as Hayle Art Society has its exhibition on this date).

For further information please contact Gill and Graham at **'Cormelican'**, Pratt's Market, Chapel Terrace, Hayle TR27 4AB 01736 755890 or 07974 000747

Computer / Laptop Problems?

I can restore your computer or laptop to full working order for a fantastic price.

NO FIX, NO FEE.

Call today for a FREE, no obligation quotation.

Call TeeCeeTech TODAY 07730 283433

Did you, or someone you know, lose a gold earring in Copperhouse last April? It was handed in at the Police station but was unclaimed. Phone Sarah at 01736 752319



Copperhouse Jewellers

*Jewellery & Repairs
Watches, Straps &
Batteries Fitted
Gifts, China & Crystal
Trophys & Engraving*

01736 753203



Vehicle Transport and Recovery



Fast & friendly service
Service & M.O.T. work
undertaken

Malcolm Hendra

Mobile: 07768 35 44 33

Home: 01736 754213

MUSIC LICENSING – THE CODA

In the last Pump I complained about the Blue Meanies who stopped the open air Millpond music concert in April, under the guise of the new Licensing Act. This concert was originally scheduled for a Sunday afternoon last April, with the innocent and most worthwhile purpose of celebrating the renovation of the Millpond Gardens, and was to have featured the Praze Hayle Male Choir and the Hayle Samba Band. At the last minute some local apparatchik stepped in and said the concert would be illegal under the new Licensing Act, despite the assurances I had obtained in 2003 from Dr Kim Howells, the minister in charge of the legislation, that such events would

not be affected.

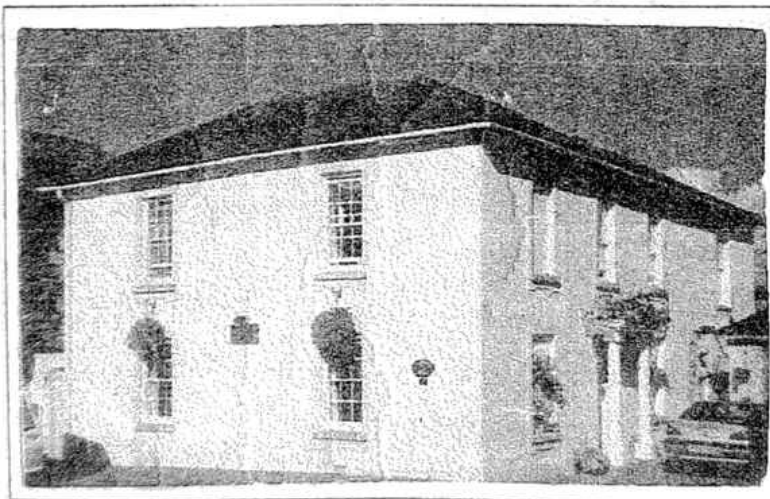
I was therefore most intrigued to read in the Guardian national newspaper of 5th July an article on the editorial page entitled "In praise of Live Music". This detailed the many anomalies in the new law which are preventing harmless, pleasurable performances from going ahead because of heavy-handed application of the vague new licensing laws. It particularly highlighted the case of the silencing of a 'West Country Male Choir' (could it be that the Guardian editor takes the Pump?), as well as didgeridoo players, brass bands and folk societies across the UK, and appealed to the new culture secretary to introduce an amendment to the current ridiculous legislation. After all, as the Guardian pointed out, there may be many reasons to silence didgeridoos, but poorly framed legisla-

CRANFORD HOUSE BED & BREAKFAST OPEN ALL YEAR—CHILDREN WELCOME

**ALL ROOMS
EN-SUITE**

**NON
SMOKING**

**OFF ROAD
PARKING**



LUXURY

HOLIDAY

APARTMENT

TO LET

PETER & PEGGY DARLOW

01736 752618

Foundry Hill * Hayle * Cornwall * TR27 4HW
cranfordhouse@hotmail.co.uk

tion should not be one of them.

Goudie Charles

Zimbabwe Appeal

My brother lives in Zimbabwe, in Filabusi, he is involved in the Small Workers Gold-mining Industry. He has a couple of stamp mills, to which, when there is diesel and electricity, a hundred or so locals bring their small loads of ore to be crushed. These loads are often carried on their heads or in wheelbarrows from miles away. The gold is extracted and once sold will support the workers and their extended families, it is one of the only forms of income as there is now no farming or industry. I was speaking to my brother on the phone recently, and while discussing how desperate the people are trying to find food and shelter, to add to their misery, he said they are literally walking around in rags. It is winter there now, and although Zimbabwe has a marvelous climate it still does get very cold. He asked me if I could send some suitable clothes out to him and he will distribute them to the most needy.

If any reader would like to donate some items such as fleeces – nice and warm and light to send, or work overalls, I will undertake to post them to him.

Please note it is not a Charity, but something we can do that will benefit the locals directly and quickly. Clothing can be left in my front porch at 35 Penpol Terrace. Your generosity and help will be very much appreciated by everyone.

Jeff Turk 01736 752319

PLANTECH

THE FRIENDLY RELIABLE SERVICE

- Lawns cut and borders weeded
- Hedges trimmed
- House, garden & building waste taken
- Garden clearance work
- Gravel, sand, topsoil delivered & laid
- Garage and loft clearances
- Free no obligation quotes

(Tel) 01736 754401 / 07979546434



CHIROPRACTIC – REHABILITATION

Most of us cause our own problems. Sometimes external factors are at work, but generally we do not have to look further than ourselves. This is particularly true when dealing with musculo-skeletal disorders and the type of complaint I will see in general practice.

Whilst most patients will make a full recovery, in nearly all cases there are contributory factors that have gone some way in causing the patient's symptoms. Typical causes are poor posture, ergonomics, unsupervised gyms, sedentary life styles, diet/nutrition, and old injuries.

When a patient visits a chiropractor they want to be "fixed", no longer

have the pain and discomfort and regain their mobility and body function. The treatment programme is structured to help the patient to full recovery. What is equally important is that the patient does not fall into old habits that will aggravate those symptoms again.

What is crucial to any treatment programme is that the patient is offered advice and help in the form of rehabilitation. This area of patient care is concerned with addressing those factors that have contributed to the patients problems. It will cover a wide range of measures that are designed to ensure the patient stays well, or at least avoids the causes of the original symptoms.

The sorts of rehabilitation programmes available vary enormously, but these are most commonly used in

the clinic.

Posture is a key factor in many joint complaints. We ignore our postures at our cost. The relationship between our joints and the muscles in our bodies plays a major role in our future health and mobility. It isn't just about being active, leading a busy life, doing lots, but actually working to keep our bodies in balance and stress free. One way to achieve this is by attending classes that offer Yoga and Pilates. Both are available locally and the clinic regularly recommends this form of healthcare to its patients.

Those who lead a more active or sport driven life style, may prefer using a personal trainer on a one to one basis. This offers the advantage of personally tailored program to fit the patient and the added incentive of someone else helping your motiva-



CORNWALL CHIROPRACTIC CLINIC

— maintaining your lifestyle —

www.cornwallclinic.co.uk Telephone:- 01736 759088

••• **IMPORTANT NEWS** •••

The Clinic at Hayle is now located at new premises. These offer modern facilities, ground-floor treatment rooms and parking! The new address is:

Connor Downs Surgery
Turnpike Road
Connor Downs
Hayle TR27 5DT

Same telephone number. Visit our website for directions.
For those without a car, the No 14 bus will take you into Connor Downs.
Look forward to seeing you there!

tion. I have seen several cases where patients of all ages who have significant imbalances in their muscle structures have been successfully treated this way.

Regular massage, we all know about it, but how many of us really use it regularly? We all carry our stress in our bodies, so if we do nothing else but attend a sports and injury therapist periodically, it will certainly help. In the clinic we have our own sports injury therapist, who specialises in deep tissue work and reflexology. Old injuries that have been left untreated can have a major impact on related structures and lead to permanent damage and immobility. Here the combined use of soft tissue work and chiropractic treatment can have real benefit in the recovery of those damaged areas of the body.

Other areas of rehabilitation will include advice and support on matters like diet and nutrition. This isn't about doing the Atkins diet and beating oneself up. It really is about eating sensibly and having three well balanced meals a day. Those of us who are perhaps shy about exercise can start modestly. Again advice is available on which exercise choices best suit the patient, for example, swimming, cycling or just a regular walk.

What rehabilitation is really about is building on the investment you have made as a patient with your chiropractor. Once you have completed your programme of treatment, build on the time and money you have invested. Decide on what rehabilitation suits you and with the chiropractor's support and advice, invest in your future. By taking on board this key

PENPOL GARAGE

- In Tune with Technology -

Air Conditioning Specialists

Engine Management, ABS,

Air Bag Diagnostics

.....

Free-fit Tyres & Exhausts

Free pre-MOT

All makes of vehicles repaired & serviced

.....

Friendly, personal attention

& professional service

17a Penpol Terrace, Hayle

Tel: 01736-757011

Mobile: 07921-218448

Now accepting all major cards.

element of healthcare, the chances of returning to your original aches and pains will be reduced significantly. You will also enjoy life more fully as you physically go from strength to strength.

Next Edition "Why do I need maintenance treatment?"

**John Christian Tillyard - Cornwall
Chiropractic Clinic
01736 759088**

THOUGHTS OF A DRIVER

*IF YOU'RE SPEEDING A CAMERA'S ON
LINE,
JUST A COUPLE OF MILES MEANS A
FINE,
BUT IF YOU NEED 'THE BILL'
THE RESPONSE WILL BE NIL
AND IF YOU'RE BEING MUGGED
THERE'S NO SIGN*

Submitted by D.C.

Hayle Friendship Group for Children's Hospice South West.

June was a busy month for the group.

On Friday 22nd at Café 1 at St. Erth we held a "Wine & Wisdom" evening (another name for a Quiz with a glass of wine). The Quiz Master failed to turn up, but Paul Mullins (owner of Café 1 with his partner Jackie) stepped in and did an excellent job. Paul and Jackie also provided a lovely buffet, so Wine, Quiz and Buffet for £5 per person, plus a raffle with loads of prizes, made it a very good evening and we raised £298.

On 24th June the proceeds from the Male Voice Choir Concert by

City of Truro Male Voice Choir (special guest Angela Thomas) raised a further £545.

On Saturday 30th June John and Lorna Coombe organised a Coffee Morning from 10am – 12noon, then a Picnic Lunch from 12noon to 2pm and ended with Cream Teas from 2pm – 4pm. You will remember that it poured with rain on that day, but John and Lorna opened their house and raised £845.

We had a stall at Camborne Show on 21st July, and at the Rose and Cabbage Show on 31st July, and 1st August. We will also be at the Rotary Vintage Car Show at the Rugby Club on 4th August and Lions Fun Day on 5th August at the Recreation Ground. Your support would be welcome.

On Sunday 26th August we are involved with the Cream Teas at

HAVE FUN IN THE SUN! AND TAKE THE BEST FRESH FRUIT

ALONG

FOR A GREAT DAY!!

FROM

**COLIN'S
MARKET GARDEN**

WHERE? OFF
FOUNDRY SQUARE



FRUITY SCENES BY  bajjer arts 756756

Goldstephen, Townshend and on Friday 21st September we are holding a "Cornish Evening" at Marazion Community Hall.

We are hoping to raise a lot more money for the children's benefit but without your help we will not be able to do this.

D. McGeorge, Chairman.

SANDRA V KING
Studio 12e, Foundry Gallery,
Pratt's Market, Hayle 01736 758272

HANDMADE GLASS BEADS

MADE WITH ITALIAN GLASS

"EFFETRE"

Demonstrations Most Days

Hayle Film Festival

Come and see for FREE,
Including

AMAZING GRACE

(recently in cinemas)

**THE LION, THE WITCH & THE
WARDROBE**

At Hayle Methodist Church

* Probable times: *

Monday August 22	All
Wednesday August 24	showings
Thursday August 25	at
Friday August 26	7.30pm

Choc Ices 10p!

* Check final details on the advertisement board outside Foundry Post Office *

Sore Feet?



Professional Help For Sore Feet

Michele Young,

M.C.F.H.P. & M.A.F.H.P.

For friendly help & advice about all foot problems, nail trimming, corns, calluses, verrucas, etc.

01736 753348 * 07900 628131

Jewellery Workshop

Vanessa Page

Goldsmith & Silversmith

- Repairs •
- Hand crafted Engagement Rings •
- Hand crafted wedding rings •
- Stone Settings •
- Pearl & Stone Re-Threading •
- Ring Re-Sizing •
- Replacement Watch Batteries •

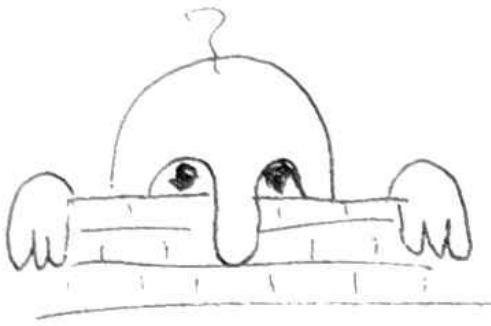
"Your Designs brought to life"

Foundry Farm, Foundry Lane, Hayle

Down Lane oposite Jewsons

Open Mon-Sat 10-5

Enquiries 01736-755996



WOT? NO LETTERS
(here's some poems instead)

BORN PRINCES

*Two boys have lost their mother
Of them she would be proud
They followed her together
Oblivious to the crowd.*

*They can't believe she's here no
more
She brought them love and joy
Bewildered and with hearts so sore
Each poor dejected boy.*

*Young Wills one day will rule the
land
With Harry by his side
But still they'll never understand
Why their dear mother died.*

*Someone blew the candle out
And left two boys in grief
To wonder what life's all about
When someone's life's so brief.*

*They'll grow up into fine young
men
With family help and love
And make her very proud of them
As she watches from above.*

D M Carne

*(written after watching on televi-
sion how brave the boys were)*

WHEN I'M AN OLD MAN

*When I'm an old man, I'll live with each kid,
And bring so much happiness – just as they
did.*

*I want to pay back all the joy they've provided
Returning each deed! Oh, they'll be so excited!
(When I'm an old man and live with my kids).*

*I'll write on the wall with reds, whites and blues
And I'll bounce on the furniture - wearing my
shoes.*

*I'll drink from the carton and then leave it out
I'll stuff all the toilets and oh, how they'll shout!
(When I'm an old man and live with my kids).*

*When they're on the phone and just out of
reach*

*I'll get into things like sugar and bleach.
Oh, they'll snap their fingers and then shake
their head*

*And wish it was time to send me to bed.
(When I'm an old man and live with my kids).*

*When they cook dinner and call me to eat
I'll not eat my greens or salad or meat
I'll gag on my cabbage, spill milk on the table
And when they get angry, I'll run – if I'm able!
(When I'm an old man and live with my kids).*

*I'll sit close to the TV, through the channels I'll
click*

*I'll cross both eyes just to see if they stick.
I'll take off my socks and throw one away,
And play in the mud 'til the end of the day!
(When I'm an old man and live with my kids).*

*And later in bed, I'll lay back and sigh,
I'll thank God in prayer and then close my
eyes.*

*My kids will look down with a smile slowly
creeping,
And say with a groan: "He's so sweet when
he's sleeping!"*

Submitted by D.H. Green

WHAT'S WRONG WITH HIM?

What's wrong with him?

They ask of me.

What's wrong with him?

They want to know.

What's wrong with him?

Why can't they see

What I can see?

A poet, teacher, husband, Dad.

Why do they not understand

That I love,

Not the wheelchair, but this man?

What's wrong with him?

They want to know.

What, I ask, is wrong with them?

Margaret Scott

"Footprints in the Sand"

Did not our parents, in times gone by

Leave footprints in this sand?

Did they not walk, as we do now

Across these towans, hand in hand?

For they too, loved this land of ours

Just as you and I

They also watched the seasons change

And listened to the seagulls cry.

The restless tide erases, every trace

Of those that once were here

The scenes unchanged, the sand still soft

A rippling sea still blue, still clear.

For we are not just travellers

Through this land that gave us birth

To us and those no longer here

Hayle is home, our place on earth.

The lessons taught, the love they gave

Were free, made no demand

The memories they left will never fade

Unlike those footprints in the sand.

The seabirds rest, the rabbits hide

A setting sun lights Trencrom Hill

The crimson sun now beckons night

With air that's somehow soft and still.

Time at last to turn for home

Walk on through Phillack's leafy hollow

Near those we loved, and who loved us

They led where now we follow.

Sometimes we fail them, as we travel on

Yet they would understand

Their words still help our faults to fade

Just like those footprints in the sand.

James Davey Dec.2000

Hayle version of an old favourite:

Little seagull flying high

Dropped a message from the sky

Traffic warden wiped his eye

Said ' Good job the dogs don't fly!'

B.R.D.

FRIENDSHIP

How precious special friendships

are

The ones we chose to keep

Those people to whom we feel

close

Where ties go really deep.

True friendship is a blessed gift

Which grows as time goes on

And as we learn with life's small

trials

The bond becomes more strong

*A good friend can be many things
Confidante, pal, and playmate
A good friend stays through thick
and thin
And guides us when we need it.*

*A good friend will always be there
Will never judge or pry
But will give comfort when you ask
And hold you when you cry.*

*True friendship lasts through
sunny days
Through autumn's golden weeks
Its steady hand is even there
Through winters that are bleak.*

*And distance can't diminish this
And when we're far apart*

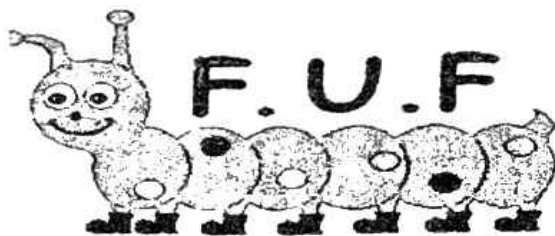
*Our friendship will remain
And occupy our hearts.*

Charles Crowle
Treglissou Gallery
News

Ho, for the hols and all that. Up here at the Gallery I'm looking forward to the coming summer season scramble. I only hope the weather doesn't put 'em all off.

Fourteen artists' work is now on display, all from Hayle or nearby. They are:

Bob Berry, photographer.
Edward Ward, Oil pastel work
David Pascoe, Glass Fusing.
Linken Cards Cards of Penwith
Stephen Driver Ink & Watercolour
Jess Parke Etched mirrors & glass



FOUNDRY UNDER FIVES

**A TRADITIONAL LOCAL PRE-SCHOOL
WHERE YOUR LITTLE CATERPILLARS
FLOURISH INTO BEAUTIFUL BUTTERFLIES**

Pre-school sessions available (sessions funded from Age 3)
Toddler sessions from birth (first session free)

For more information, or to arrange
a visit, call us on 01736-755511

- September bookings now being taken -

Antony G Oil pastels & prints;
Mary Denton Watercolours
Bob Denton Art Nouveau Mirrors
Jane Gray Large collages
Jessica Gray Driftwood hangings.
Tanto Plastic ball sculpture
Linda King Drypoint & ceramics
Currently experimenting with a
range of small garden ornaments/
sculptures, both decorative and
functional.

The gallery is now at full capacity
and no more new work can be
taken. The general public are be-
ginning to find us and there have
been some others making use of
the 'phone number to come up and
view privately. Thanks to all of them
for that.

The blue clay I mentioned last
issue turned out to be a disap-
pointment as it went a pale pink
when fired. – I had hoped it would
stay a pale powder blue. It was
found during digging activities at a
private house in Angarrack. Not
quite Treglisson itself but close
enough to call it local. Unfortunately
there is no more to experiment
with so that project has reached a
dead end. Fortunately I'm never at
a loss for a new idea, hence the
garden ornaments.

Have a good summer.

Treglisson Gallery is in Wheal
Alfred Road opposite the Dog Res-
cue Centre.

STREAM CLEARANCE POLICY

Further to our article in the last
issue of the Pump, Mrs Rosemary
Harvey has sent us more informa-
tion on the subject.

**DO YOU NEED
A REGULAR
WINDOW
CLEANER?**



***David Morris Window
Cleaning***

***We are already well established
in your area (8 years)***

High reach cleaning system.

***Phone Dave for a free
quote on
01736 756394***

It was Mrs Harvey who made a
formal complaint to the Environment
Agency re strimming the river banks
as about 36 ducklings had hatched.
She also contacted Radio Cornwall,
and Laurence Reed took up the is-
sue. As a result she had a prompt
reply from Jonathan Bailey of the
Environment Agency who invited her
and any other concerned members
of the public to meet with him on
site. In the event three members of
the Agency turned up who were ex-
tremely helpful, interested and LIS-
TENED.

Between them they pinpointed and
marked on their map several areas
which will be left un-trimmed next
year, leaving "corridors" of cover for
young clutches.

Happily since then, several more
small clutches have been raised,

including two yellow, now turning silver and grey, young ducks. Below is the letter from the Environment Agency to Mrs. Harvey:

COMPLAINT:

Environment Agency's Stream Clearance Policy.

It was a pleasure to meet with you and your friends in Hayle recently. It was also reassuring to see the family of ducklings on the stream at Brookway although I acknowledge your comments regarding the level of predation around the slipway on the canal.

We discussed the difficult balance that the Environment Agency has between protecting the public from flooding and improving habitats for wildlife including ducklings. We agreed that the unusually mild weather had caused the duckling to

hatch slightly earlier and this had coincided with our maintenance work programme. We carried out this work towards the end of April in agreement with our conservation colleagues and in accordance with previous years' plans. We agreed that no wholesale change to our maintenance programme was required, but we would modify our cutting in the local area to increase cover for the ducklings. Specifically:

(A) Upstream of the bridge at Brookway. We will leave corridors of cover between the watercourse and the more significant cover that is available further up the bank.

(B) We will not cut the area around the slipway at Menmare in the spring, but will trim it in the autumn. We expect this will provide more



NEIL WADE

MOTOR ENGINEER

CENTRAL GARAGE

10A HAYLE TERRACE, HAYLE



MOT CAR & MOTORCYCLE TESTING CENTRE

**DIESELS & CATALYSTS TESTED*SERVICING*REPAIRS*
WHEEL BALANCING*EXHAUSTS*TRACKING*
TYRES*BATTERIES***

PROVIDING SERVICING & REPAIRS TO ALL MAKES OF VEHICLE

TEL 01736 756512 MOB 07990 981546

HOME 01209 610651

cover for the ducklings in the spring around this vulnerable area that is used by the public to feed the ducks. I am pleased that we have been able to work together to create a better place for all residents, both humans and ducks.

Jonathan Bailey
Operations Delivery Manager
(Devon and Cornwall.)

Quiz by Cleverclogs – Anagrams (for a change)

This time we are looking for countries – just re-arrange the letters in the words given.

Example: PURE turns into PERU.

The first all correct entry out of the hat wins a voucher for £20 to be spent with any of our advertisers.

There is a lucky dip prize of £5 drawn from all entries.

Closing date 20th September.

1. MOAN
2. LEND ANGER
3. GREY MAN
4. NEAR GIANT
5. INK PASTA
6. 'NONE' I SAID
7. RABIES
8. ROTA PLUG
9. LARA'S KIN
10. MULE BOX RUG
11. I HAIL TUNA
12. IGLOO MAN
13. REAL DIN
14. OIL A COMB
15. BLADES HANG.

Answers to quiz in last issue:

- | | |
|---------|-----------|
| 1. Zinc | 9. Chrome |
| 2. Tin | 10. Steel |

ALAN ORCHARD & SONS

APPRENTICESHIP SERVED



PROFESSIONAL TRADESMEN

CARPENTRY & JOINERY

uPVC FASCIAS

ROOFING, BUILDING,
DECKING

KITCHEN FITTING

01736 756687

07787 148571

27 GUILDFORD ROAD
HAYLE TR27 4PP

- | | |
|-----------|-------------|
| 3. Iron | 11. Nickel |
| 4. Copper | 12. Cobalt |
| 5. Brass | 13. Lead |
| 6. Gold | 14. Mercury |
| 7. Silver | 15. Wolfram |
| 8. Pewter | |

The winner was: Mrs J Thompson
and the lucky dip winner was: V.
Dickie.

Yoga

beginner's classes

Tuesdays 9.30–11 am

Passmore Edwards Institute

£4.50 per class

Tel: 01736 366388



Council Corner

Footpaths

The Council is mindful that there are a number of footpaths in the town that do not appear on the definitive map and that the deadline for registering footpaths is fast approaching. We want members of the public to identify paths they would like to see protected and would welcome information on paths that have been used historically and are now closed.

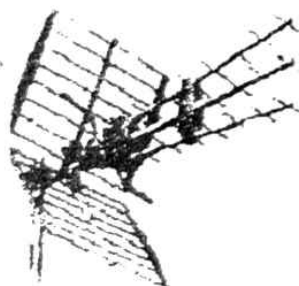
Members of the Council have formed a working party to progress this issue so please do not hesitate to contact the Town Clerk with information.

CCTV

The thorny issue of the upgrading of the CCTV system has again raised its head. The Council will debate this matter further in September and will have to decide whether to commit to making substantial annual financial contributions for the foreseeable future.

It has become apparent that the CCTV system, which covers Hayle, St Ives, and Penzance, needs a complete overhaul. The existing system is over eight years old and has reached the point where significant investment is needed to ensure that it can provide improved identification quality and to replace worn out equipment.

The District Council will continue to commit in the region of £200,000 per annum to keep the system running,



ALL AERIALS

DIGITAL TELEVISION SPECIALISTS

Members of the Confederation of Aerial Industries

DIGITAL AERIAL INSTALLATIONS & UPGRADES

ALL WORK GUARANTEED * FULLY INSURED *

COMPETITIVE PRICES * PROMPT RELIABLE SERVICE

FOR FREE FRIENDLY ADVICE CALL JONATHAN

01736 759225

Mobile 07979503907 / Email jon@allaerials.co.uk

www.allaerials.co.uk

but it is asking the three Town Councils concerned to contribute to the cost of the upgrade, to the sum of approximately £32,000 per annum. This will be split proportionally between the three towns. Without the agreement and support of the towns it is likely that the CCTV service will be withdrawn.

It is estimated that Hayle's contribution will be around £5,000 – £6,000 per annum for the next five years. This will mean an increase on the town's precept (and the Town Council's element of your overall Council Tax) of approximately 6.5% or in real terms, £1.95 per year per Band D property.

The Town Council would welcome your views before making this important decision.

Britain in Bloom

See the report by Hayle in Bloom's chairman, Marjorie Roberts elsewhere in this issue. You can keep an eye on the Britain in Bloom website (www.hayleinbloom.co.uk) for new updates, we are all keeping our fingers crossed for positive results!

There will be an additional judging day this year as Hayle is now in the National Competition due to last year's fantastic results. Our thanks go to Paradise Park for hosting and providing the successful lunch buffet and also to those involved on the Britain in Bloom Committee for their excellent work and making Hayle look so beautiful. Good luck!

Hayle Community Centre

If you are planning on holding any meetings, events, classes or even parties the Community Centre has rooms available for hire. Space is

John BENNETT

Independent

Hayle Town Council

Penwith District Council



Your representative for Hayle South Ward

A planning application for the harbour development is now expected late August or September, and progress is being made on the old Hawkins site. Keep up on the latest developments by checking my web site, signing up for news alerts or reading my news poster in the Martin's display cases at Foundry.

Telephone: 01736-753184

Email: john.bennett@penwith.gov.uk

Web site: www.hayle.eu

COUNCILLOR TERRY LELLO CC



As your Town, District and County Councillor, I am here to represent you, share your concerns, and assist with any problems you may have. Every Friday I run community surgeries at the Children's Centre (the old Bodriggy School site) from 2-3pm.

My contact details:

- 01872-322570 (County Hall)
- 01736-757507 (Home)
- 07837-311632 (Mobile)

Email: tlello@cornwall.gov.uk

HAYLE AIR TRAINING CORPS (ATC)

INVITE YOU TO THEIR
OPEN EVENING!



COME AND SEE WHAT THE ATC
IS ALL ABOUT

**THURSDAY 9TH AUGUST
7PM ONWARDS**

THE CADET CENTRE, 7 HAYLE TERRACE
FREE REFRESHMENTS FOR ALL!



available for regular sessions or one off bookings. Contact the Town Clerk for availability.

Hayle Open Air Swimming Pool

We hope that August brings better weather so remember that the improved outdoor pool is open daily from 10am – 6 pm. Prices are as follows, Adult Bather £2.50, Junior and Senior Bathers £1.60 and Season Tickets are still available. Additionally, there are very pleasant sitting areas and good food is available from the café.

West Cornwall Retail Park

The Town Council is delighted to welcome Costa Coffee and M & S to our town. It is great to see that all units are full and successfully trading. As a Council we fought hard to get the retail of food restrictions relating to the site lifted and our endeavours

have now borne fruit!

Further information on the above and other local issues can be obtained from the Council website:-
www.hayletowncouncil.net

Hayle Town Council
Passmore Edwards Institute
13 – 15 Hayle Terrace
Hayle TR27 4BU
01736 755005

townclerk@hayletowncouncil.net

Eleanor Gigg, Town Clerk

FOOTSTEPS



5 Penpol Terrace, Hayle

01736-757735



Specialising in wide-fitting footwear for men & women. All dancewear: ballet, tap shoes, etc.

New autumn styles arriving daily.

PRAZE HAYLE MALE CHOIR

The sounds of Summer

You are invited to share the Choir's summer sounds both indoor and out. There remaining events of our summer season are a concert at The Porthminster Hotel, St Ives, the choir barbeque at the Blue Anchor in Helston, and the Carolaire by the harbour at Porthleven. Added to this is a concert at St Elwyn's in aid of the church's restoration fund. See below for details.

Recent events/concerts

The choir sang at a wedding in Breage Church at the end of May whilst June 5 and July 3 saw the first two of our summer season with our

sponsors The Porthminster Hotel. On June 16, lucky with the weather again this year, the choir was part of the entertainment at Connor Downs School Fête. At Townshend Village Hall on June 28 the choir gave a concert featuring soloists from the choir and the Praze Hayle Quartet. On July 5 we entertained a group of German visitors at The Crossroads, Scorrier.

Forthcoming events

Sunday July 29 7.30pm

St Bartholomew's, Porthleven

Tuesday August 7 8.30 for 9pm

Porthminster Hotel, St Ives

Thursday August 9 7.30pm

St Elwyn's, Hayle

Saturday 11 August

Choir barbecue at Blue Anchor, Helston. This event, open to one and all, starts at 6.30pm with a set from the Choir at 8.00pm, and will give an

opportunity to hear the choir, meet us informally, help boost choir funds and later in the evening sing along with us.)

Sunday August 26 8.30pm

Carolaire, Porthleven Harbour

Tuesday Sept. 4 8.30 for 9pm

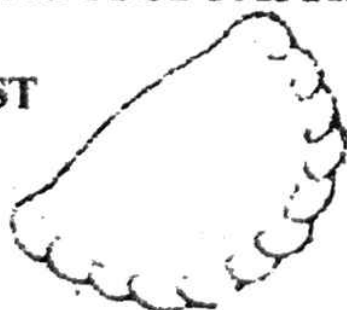
Porthminster Hotel

Membership and Choir Contacts

As ever, we would like to attract new members and welcome anyone interested to our choir practices on Tuesday evenings at 7.30 pm. We meet in the schoolroom at the rear of Hayle Methodist Church. The requirements are to have a male voice, an ability and a desire to sing with others, previous experience in male voice choirs and reading music, whilst welcomed, are not essential. Just turn up or

PHILP'S
FAMOUS PASTIES

EST



1958

BAKING 7 DAYS A WEEK
FOR THE GREAT TASTE OF
CORNWALL'S
PREMIER PASTY MAKERS
WITH OVER 40 YEARS
EXPERIENCE
VISIT US NOW
AT OUR SHOPS AT-



**1, EAST QUAY,
HAYLE**
01736 - 755661



**1, FOUNDRY HILL,
HAYLE**
01736 - 753302



**MARKET PLACE,
MARAZION**
01736 - 710332

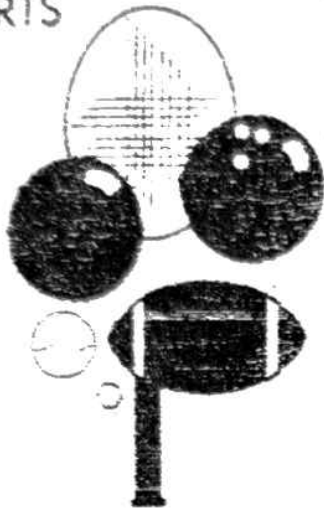


**THE SQUARE,
PRAZE & BEEBLE**
01209 - 831360

ANGOVE SPORTS

COPPERHOUSE, HAYLE
01736 - 752238

FOR ALL SPORTS
EQUIPMENT
CLOTHING &
FISHING
TACKLE
*
RACKETS
REPAIRED
& RESTRUNG



contact Roger Evans, Secretary, ☎
01736 754681 or John Barraclough,
Asst Secretary, ☎ 01209 831879 for
more details.

John Barraclough

Hayle Art Society

The Hayle Art Society will be holding their Annual Exhibition at Phillack Church Hall from the 30th July to Sunday 5th August.

There will be paintings and crafts for sale, and lots of unframed paintings which will be sold in aid of St. Julia's Hospice.

The exhibition is on every day from 10am – 6pm except on the last day, when the show closes at 4.30pm.

Plants on the Towans No.16: Self Heal - *Prunella Vulgaris*

This is one of those plants that's easy to miss as it keeps very close to the ground in these parts – no more than 2 inches in old money.

The little blue-violet bugle-like flowers also keep close to the stem. Self Heal is in the same family as the mints, nettles, basil and thyme known as the labiate and it is as useful as it is beautiful. It's been flowering now on the Towans for about six weeks but prefers places where the ground is more compact away from the dunes.

Self Heal is a medicinal herb known since ancient times. The dried aerial parts are used both internally for wounds and ulcers and externally for cuts and sores.

Here's a quote from Culpeper's 1826 herbal:- "The juice hereof used with oil of roses to anoint the temples and forehead, is very effective to remove the headache: and the same mixed with honey of roses, cleanses and heals all ulcers in the mouth and throat, and those also in the secret parts".

Also flowering now is the lovely little pyramid orchid, and next month see if you can spot the rare and exotic Broad Leaf Marsh Orchid. (There's only one place on the whole Towans where it can be found.) BUT PLEASE DON'T PICK THEM.

Happy hunting,

Michael Locke.



HAYLE TWINNING ASSOCIATION

This year was the 10th Anniversary of the continuing bond of twinning between Hayle and Pordic.

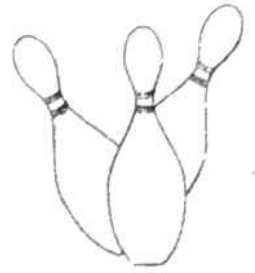
The Hayle Twinning Association once again hosted over 50 friends from Pordic in Brittany, France. The visit was enjoyed by everyone involved; we had a full weekend with over 75 people visiting the Eden Project with a stop at Charlestown on the way home.

Our 10th Anniversary dinner was held at the Godolphin Arms Marazion, where we ate a delicious meal with view of the floodlit St Michaels Mount, which was greatly appreciated by our guests. Entertainment was enjoyed by courtesy of the Marazion Appllo Choir who sang several Cornish songs during the evening.

The guests spent a full day with their hosts on the Saturday and in the evening were once again entertained by the Heyl Town Band, Cadgwith singers and the Samba Band, this was held at the St Ives Bay Holiday village overlooking St Ives Bay. What a fabulous evening we had with everyone joining in with singing and dancing.

On Sunday our guests from Pordic returned home tired but happy having enjoyed our Cornish hospitality. We are looking forward to our visit at the end of August when our French friends will be returning the favour when we will travel to Pordic for a

Country Skittles ...



...welcomes Pump readers of all ages.

4 traditional 9-pin skittle lanes

Restaurant & snack menu available at all times

Roast lunches served all day on Sundays

Fully licensed bar

Target shooting gallery

Crazy golf

Pool Table football

Air hockey Batak

Lots of traditional board games & many other games to play.

We cater for groups large and small, and provide an ideal venue for family get-togethers, birthday parties and works outings.

To get to us, take the B3302 out of Hayle towards Helston and turn right when you see our sign just past St Erth Praise. We are about half a mile up that road.

Booking in advance is advisable at busy times.

For further information ring us on 01736 850209

Des Button

Springfield
33 Clifton Terrace
HAYLE TR27 4BP

01736 753211
0778 868 2076

ELECTRICAL
SERVICES &
SUPPLIES

**Part P
Registered**



long weekend.

Since the visit we have had two fund raising events. In June we held a coffee morning at Phillack Church Hall raising £102.10. On July 8th a cream tea was held at the home of Andrew and Jill George which raised a further £140.

On **August 16th at 7pm** everyone is welcome to join us at the Recreation Ground Hayle for a game of Boules.

September 14th another Safari Supper will be held £12.50 per person to include 3 courses and wine. The theme is an Italian Evening, please ring 01736 754531 or 01736 756152 to book places.

Anyone wishing to become a member of Hayle Twinning Association is

more than welcome, please contact me on 01736 754531 for more information.

Sonia Glasson, Chairperson

P G Franklin

Chapel Hill, St Erth

General House Repairs • Property Maintenance
Garden Landscaping

NO JOB TOO SMALL

Telephone: 01736-757360

Mobile: 07778-739341

THE VIEW FROM THE STEEPLE.

Hello again! What a difference a few weeks of wet, windy and distinctly chilly weather can make.

It seems that we may have had our summer in April. Ever since then a 'meteorological glitch' has inflicted on us a cross between autumnal gales and a monsoon, but at least, since the window was repaired, my belfry is now dry.

In spite of this dismal damp, as I promised, our musical feast continued in May with the very welcome return of Marazion Apollo Male Voice Choir. Their guest soloist was the soprano, Laura Nicholas. Laura is one of a growing number of new and exciting young performers who have made their debuts this season and her beautiful voice is a wonderful new addition to the concert circuit.

The final course was a truly trium-

phant performance by the City of Truro Male Choir with their very special guest, Angela Thomas. This concert was raising funds for the Children's Hospice South West, jointly supported by Hayle Lions and St. Elwyn's Church. Truro have given us some memorable evenings and this was no exception, with their conductor, Paul Triggs in fine voice for his solo performance during the finale.

The Winter Concerts have become a much-loved feature and have given our enthusiastic audiences an opportunity to enjoy some fine singing, not only from our visiting choirs, but from their guest soloists as well and we can now look forward to more of the same when the 2008 season gets under-

way in January.

In the meantime, the Summer Art Exhibition by our old friend Jim Whitlock is now on, and continues until 13th August.

Nor has the music quite come to an end. Praze Hayle Male Choir will be in concert at St. Elwyn's on 9th August.

By then, maybe we will have found where they have hidden our summer. My feathers are in danger of a touch of rust and webbed feet don't really belong on a sparrow!

'Bye for now, folks! See you all again, soon!

The Sanctuary Sparrow.

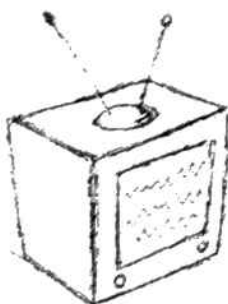
Doctor, doctor, my husband thinks he's a parachutist.

Tell him to drop in and see me.



Problems setting up your DVD - TV - Video - Digibox?

We offer a set-up service!



SALE OF SECOND-HAND TV'S
FROM £49.99



MURTS TELEVISION
32 Penpol Terrace, Hayle
Repairs / Sales / Rentals
01736-752269



BARTON print

Tel: 07799 411525
Fax: 01736 757022

Quick Reliable General Printing Service

JUST A SMALL SELECTION OF THE SERVICES WE OFFER!

- BUSINESS CARDS
- COMPLIMENT SLIPS
- NCR PADS / SETS
- LEAFLETS
- MENUS
- NEWSLETTERS
- ENVELOPES
- LARGE FORMAT PRINTS
- LETTERHEADS
- OVERPRINTING
- B/W COLOUR COPYING

COMPETITIVELY PRICED

1 Turnpike Road, Connor Downs

Telephone 07799 411525 01736 754220

HAYLE SURF LIFE SAVING NIPPERS TRIUMPH!

Hayle Surf Life Saving Club are celebrating their best ever result at a Nipper Championships

They finished in 2nd place overall at the Cornish Nipper Championships held on Maenporth beach, near Falmouth on Sunday 15 July. The forty-seven nippers from the Club bravely battled against the elements and stiff competition from 8 other Cornish Clubs to achieve 6 Gold, 11 Silver and 14 Bronze medals in a range of events in the sea and on the beach.

Team Manager, Traci Parker, said "Once again our Nippers put all their efforts in difficult conditions into achieving this fantastic result for our Club. I would like to thank them all

for their good sportsmanship and enthusiasm and their parents for all their support throughout the day. Our main aim in attending any Championship is for the children to enjoy their day and it is always a bonus when we do so well. We are now looking forward to the Nipper National Championships at Portreath on the weekend of 28 and 29 July, hoping for better weather and another enjoyable Championship.

May I take this opportunity to thank Hayle Lions Club for the two new larger nipper boards they bought for us earlier in the year, we took them to the event.

Individual medal winners were:-
8 yr olds:

Canaan Smithan - Bronze for Beach Flags;

Sophie Morris - Silver for Beach Flags & Bronze for Beach Sprint.

9 yr olds:

Alec Fuca -Gold for Beach Sprint;

Liam Jolly - Bronzes for Wading race and Board race;

Yasmin Walters - Silver for Beach Sprint & Bronze for Beach Flags;

Lucy Walters - Bronze for Beach Sprint.

10 yr olds:

Vicky Burlingham - Gold for Board race, Bronze for Beach Sprint;

Brittany Smaldon - Bronze for Board race;

Bethany Mead - Silver for Surf race.

11 yr olds:

Billy Read - Silver for Beach Flags;

Tegen Hughes - Silver for Board race.

12 yr olds:

Matt Trewhella - Bronze for Surf

race;

Tegan Scholes - Golds for Beach
Flags & Beach Sprint.

13 yr olds:

Jordan Roberts - Silver for Board
race, Bronzes for Golden Nipper &
Beach Sprint;

Emily Corin - Silver for Golden Nip-
per;

Lucy Read - Silver for Beach Flags.

Team medal winners were: -

Board Relay:

8/9/10 yr olds

Gold for Morvah Hughes, Kathryn
Onley, Vicky Burlingham;

Bronze for Sophie Morris, Emmi
Atkinson, Brittany Smaldon.

11/12/13 yr olds

Silver for Tegen Hughes, Tegan
Scholes, Emily Corin.

Surf Relay (Taplin):

11/12/13 yr olds-

Silver for Tegen Hughes, Tegan
Scholes, Emily Corin.

Beach Sprint Relay|:

8/9 yr olds

Silver for Canaan Smithan, Alex Dre-
wett, Liam Jolly, Alec Fuca.

10/11 yr olds

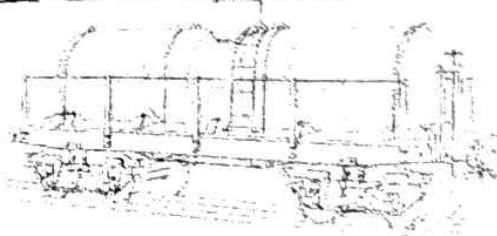
Bronze for Daniel Long, James
Pearson, Billy Read, Ben Tredinnick;
Bronze for Bethany Mead, Vicky
Burlingham, Tegen Hughes, Bethany
Prisk.

12/13yr olds

Gold for Emma Eddy, Emily Corin
Tegan Scholes, Lucy Read.

*Carol Penberthy, Press Officer
Hayle Surf Life Saving Club. Tel:
01209 711322 or 01736 741004 (wk)*

GREAT WESTERN SCALE MODELS



Dapol OO and N Gauge Model Railways

Bachmann – OO, American & Spectrum

Aristocraft – Special orders only

Athern – HO American Locos only

Gaugemaster Controls • Bachmann ON30 – *now in stock*

• Meahano American Garden Railways

• *(many second-hand available)*

3 Pratts Market, Foundry Square, Hayle TR27 5AR

01736-757679

- Rushing home early from work to pick up the kids?
- Don't know what to do with them in the holidays?

We can help!

Hayle Out of School Club

(rear of Penpol School)

01736 757695

Ages 4-12

Ofsted Registered

IN PRAISE OF SCYTHING - AND SILENCE!

The lane has been closed for two days and it is literally a different world, our space seems to have expanded and yet I am conscious of much more in it, the sound of the breeze, birds; the ever present concerns of traffic and cats has retreated down the telescope, freeing up yet more space. I am wondering if silence is a something or a no-thing! You have time to do that when it's quiet.

Another sound which regularly assaults our ears is that of 'electric' gardening tools, no Sunday is complete without someone not too far away, doubtless feeling hugely justified, spoiling what otherwise might have been peace and quiet with some whining strimmer or trimmer. Compare that

with the gentle, regular, swish, swish, swish of a scythe which is heard by the mower alone and you begin to get the picture – which would you prefer? In fact you only have to see an individual dressed to 'strim' in what could possibly be worn in a chemical war zone and a mower dressed to scythe – bare feet in the morning dew is recommended – to have an instant picture of the difference on the person and the environment between the two activities. Ah but speed, you say, everything must be done on a Sunday afternoon which is the only time we have allowed ourselves in our busy lives actually to be in our much prized pocket handkerchiefs of nature. Well good mowers equal trimmers in speed but hey, scything is such a wonderful thing to do, occupying the whole body, the whole mind in a rhythmic sway, why not allow yourself as much time as you need to enjoy it?

Nor is it an archaic art, the secrets of which are guarded by a few aging practitioners. Austrian scythes, the type I use, are extremely light with a wide choice of different blades for different activities, and are available by Simon Fairlie of the Scytheshop (website); even better than just getting one I can thoroughly recommend going to one of his day courses so you can



W. J. WINN

**FUNERAL & CREMATION DIRECTORS
PRIVATE CHAPELS OF REST
24 HOUR SERVICE**



69, FORE STREET
HAYLE
01736 752124

&

TRENWITH TCE
ST. IVES
01736 793029

learn to use and care for your scythe properly. There were a number of professional gardeners on the course I attended so it is definitely an expanding practice.

So for your own health, that of your 'patch' and your neighbours, take up scything!

Happy days, love and light

Felicity

SINGER & PFAFF SEWING CENTRE

Authorised Singer Service Centre for Cornwall

All makes serviced

11 ST. JOHN STREET, TRURO

01872 225168

Mr & Mrs D.M. Girling

KRIS GAYLE AT ST IVES SEPTEMBERFEST

Hayle jazz diva Kris Gayle appears as star attraction at St Ives Jazz Club on Tuesday 11th September, backed by the peerless Viv Rodd and his trio. The gig is part of the annual St Ives music festival, running from Saturday 8th to Saturday 22nd September. The incredible Israeli saxophonist Gilad Atzmon follows Kris into St Ives Jazz Club on Tuesday 18th September, and other festival highlights include Ralph McTell (Guildhall 11th Sept.) Eddie Reader (Guildhall 13th Sept.) and Kenny Ball ((St Ives Rugby Club 17th Sept.) Full details on:-

www.stiveseptemberfestival.co.uk

St Ives Jazz Club, now in its 10th year, features top jazz every Tues-

SUITES & SOFAS WAREHOUSE

Unit M, St. Erth Industrial Estate, Hayle, TR27 6LP

LARGE SELECTION OF LEATHER AND FABRICS TO ORDER

*ALSO FROM STOCK, ENDS, ONLINES,
ETC. AT CLEARANCE PRICES*

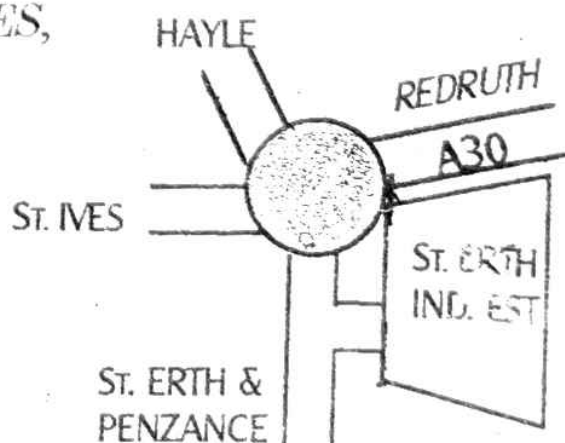
For details of our current
offers phone

01736 759586

07779 760686

or visit our warehouse daily

between 11am-4pm WHEN WE ARE OPEN TO VIEW





O'DELL SIGNS

OF ALL TYPES
Signwriting, Perspex
Plastic, Engraved,
Magnetic, Posters,
Illuminated signs,
COMPUTER CUT
VINYL LETTERING
for Vehicles & Signs

Embroidery
for
Businesses & Clubs

HAYLE 01736 753656
1, Turnpike Road, Connor Downs.

day. Forthcoming attractions include legendary UK tenor saxist Bobby Wellins (14th August) and trumpeter Steve Waterman (25th September.) Full details available on:- www.stivesjazzclub.com

Kris Gayle is currently in the studio working on her new album, with orchestrations and keyboard by Viv Rodd. Hopefully this will be released in the autumn – watch this space!

Goudie Charles



RSPB NEWS

A steady passage of waders during early July has marked the start of autumn. (Whatever happened to the summer?) These have included Redshank, Greenshank,

Dunlin, Sanderling, Knot, Whimbrel and Common Sandpipers, but the highlight without question was an adult, summer-plumaged (bright red) Long-Billed Dowitcher between 14 – 17 July [a great rarity in this country.]

Work continues to keep the reserve free from litter and our next clean-up is at Copperhouse Creek on August 19. We will be concentrating on the bushes at the Black Bridge end of the creek, so we will not interfere with the raft Race on that day.

It is important to us that every visitor to the reserve has a pleasant experience whilst on site, which is why so much time and energy is spent looking after the nature reserve. To further improve people's enjoyment, the RSPB will soon be installing information signs at Carnsew Pool and Copperhouse Creek. These are designed to give a flavour of why the reserve is one of the RSPB's most important reserves for migrating and wintering birds. We would like to thank Hayle Town Council for giving the RSPB permission to install one of the signs on their land adjacent to Copperhouse Creek.

Finally, the RSPB wishes Hayle good luck in the *Britain in Bloom* competition. Jenny met the judges in July to speak about the reserve, to say how important it is to the local community [as well as to the birds] and to emphasise how important the support of local people is to the protection of this wonderful wildlife haven.

Jenny Parker, Assistant Warden
RSPB 01736 711682

Index of Advertisers

- | | | |
|------------------------------|-----------------------------|-------------------------|
| All Aerials...26 | Franklin, P.G...32 | Passmore Edwards...3 |
| Angove Sports...30* | FUF...22 | Penpol Garage...17 |
| Barton Print...34 | Grameen Tandoori...5 | Philp's Pasties...29 |
| Bennett, John...27 | Great Western Models...35 | Plantech...15 |
| Bigglestons...40* | Guitar Tuition...8 | Singer & Pfaff...37 |
| Button, Des...32 | Hayes, Roy...8 | South West Estates...40 |
| Café 1...7* | Hayle Holistic Clinic...39* | Stand Easy (feet)...19 |
| Cliffords Plumbing...12 | Hendra, Malcolm...13 | Suites & Sofas...37 |
| Colin's M'ket Garden...18* | H.O.S.C....36 | TeeCeeTech...13 |
| Copperhouse Jeweller...13 | J C Electrical...9 | The Painter 12 |
| Cornwall Chiropractic...16 | Jolly Bodger...11* | Wade, Neil...24 |
| Country Skittles...31 | Keast, F L...6* | Window Cleaner...23 |
| Cranford House...14 | King, Sandra...19 | Winn, W.J...36 |
| Do It For You (gardens)...10 | Lello, Terry...27 | Yoga...25 |
| Farm Shop...4* | Murt's Television...33* | |
| Fernleigh..11 | O'Dell's Signs...38 | |
| Footsteps...28* | Orchard, Alan...25 | |
| Foundry Interiors...7 | Page, Vanessa...19 | |

You can pick up a copy of the Pump at those advertisers marked with an * also at Hayle Library, Day Care Centre, Community Centre, Bodriggy Health Centre, Copperhouse P.O., Forbuoys, St. Erth P.O., Connor Downs P.O. and many other places in Hayle.



Hayle Holistic Beauty Clinic

77, Mellanear Close, Hayle.

01736 755656

New Treatments * Ear candling * Hot stone Massage

All beauty treatments (Face & Body) by award winning therapist, RAMA
Electrolysis, Ear piercing
Specialised cosmetic treatment (Collagen, Thread Vein treatments)
Gift Vouchers . Free Consultation.
Special rates for senior citizens & school children.

BIGGLESTONS

TRADING IN HAYLE FOR OVER 100 YEARS

Please try us first for the best of Hardware,
Ironmongery, Kitchenware, Paraffin
and Garden Supplies.

01736 752219

*Summer, Autumn, Winter, Spring
We can supply 'most everything*

PROPERTY OWNERS! **Would you like to earn a steady monthly income?**

If you are interested in letting your property,
please call us for a free valuation or information on
our professional lettings and management service.

Looking for rental accommodation?
Please call us on the contact numbers below,
or email us at enq@southwest-estates.com.

SOUTH WEST ESTATES
Lettings & Management Agents
01736-793010 -or- 01736-758555
www.southwest-estates.com