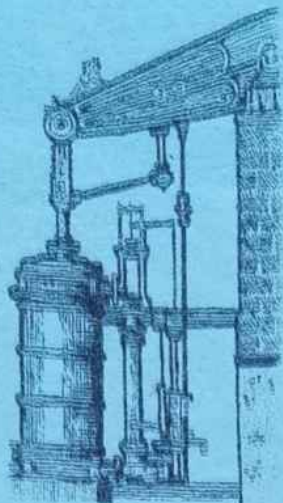


ISSUE 78

Oct/ Nov

2007



# HAYLE PUMP NEWSLETTER

**Circulation 2500 FREE copy, please take one. Made possible thanks to our advertisers.**



Sponsored Cycle Ride on Sunday September 16 for the Christmas Lights raises over £500.00! Ray Hales, Richard Quick, Ray Wyse, Jeff Turk, Richard Horwell, Neil James, Eleanor Giggall, Robbie James, Mike Matthews.

**Hayle Pump Newsletter, Unit 9, Pratt's Market,  
Chapel Terrace, Hayle TR27 4AB**  
email: krisandgoudie@btinternet.com

**Advertising Rates**

Half page (130 x 95mm) .... £22.00  
Quarter page (63 x 95mm)..... £12.00  
Eighth page (63 x 42mm) .....£7.00

*If you wish to advertise in the Pump please contact Donna Anton at the phone no. / email below*

**Editorial Team Members**

*Donna Anton  
01736 753184  
donna@donna-anton.com*

*Tim Appleton*

*Goudie Charles  
01736 757351*

*Don Metcalf  
01736 757720*

*Joy Scott-Mance*

*Jeff & Sarah Turk  
35 Penpol Terrace Hayle  
TR27 4BQ, 01736 752319*

***Closing date for next issue:  
20th November 2007  
(advert subject to space  
availability)***

**You can leave your news, letters, notices etc. at our unit in the market, or with any of the team. You can also use any of our drop-off points:**

**at Foundry:**

*Biggleston's Hardware  
Colin's Market Garden*

**at Copperhouse:**

*Angove Sports  
Jolly Bodger*

*The Hayle Pump would like to remind readers that items, or articles and Public Notices are accepted as points of view and are not necessarily the opinion of the Newsletter Team. Correspondents are reminded that all material submitted must be signed with their name and address, and if possible, telephone number for validation. This will not be printed if you don't wish it to be. We reserve the right to refuse or edit items sent to us.*

**HAYLE PUMP  
SUBSCRIPTION SERVICE.**

**For those readers who would like a Pump sent to family or friends elsewhere in the UK, or local people unable to get into Hayle to collect a copy, we operate a postal subscription service. Simply send us the delivery name and address CLEARLY PRINTED, together with £2.50 to cover the cost of stamps and envelopes, and we will send a year's issues (6 copies) of the Pump as soon as it is published. (UK addresses only—please make cheques/postal orders payable to "Hayle Pump Newsletter")**

## Hayle Decorative Lighting News

Despite the weather looking distinctly unfriendly on Sunday September 16 a group of riders (pictured on the cover), later joined by George and Kim from the Bird in Hand, set off on a sponsored bike ride. The route of 20 miles was through Towednack to Zennor and Gulval for lunch then back to Hayle and they raised over £500, a magnificent effort.

We held a Quiz Night at Hayle Rugby Club on Friday September 14, unfortunately this was also when England were playing South Africa at rugby, so there were only five teams that turned up. Given the result of the match, everyone would probably have had a better time at our quiz, however we managed to raise another £88, thanks once again to David Jones quizmaster and Jeremy Joslin who read out the questions. Our next quiz is on October 12<sup>th</sup>, please do try and get a team together to take part.

It's that time again, we are already starting to put up the lights, and we are a small group of increasingly decrepit people – Mike is recovering after a long illness, Jeff has a bad back, Richard is still having trouble with his knee, Frank has a bad shoulder, so PLEASE, there must be someone out there who is willing to lend a hand. It's not all graft, it can be good fun and we do have a lot of laughs. If you are able to help ring Dick Horwell on 01736 752597 or Jeff Turk on 01736 752319.

## PASSMORE EDWARDS INSTITUTE

13-15 Hayle Terrace, Hayle, TR27 4BU



### MEETING ROOMS FOR HIRE

#### Passmore Edwards Room £16 per session

Boardroom table seats 16, plus seating for an additional 12. Ideal for business and community meetings. Approx. 7.5m x 5.5m.

#### Front Room Downstairs £10 per session

Chairs and tables for 40. Suitable for informal meetings, arts & crafts, etc. Adjacent to kitchen. Approx. 7.5m x 5.5m

#### Large Room Upstairs £12.50 per session

With raised platform. Can seat 100 for lectures and large meetings, or for use as an exercise room. Approx. 13m x 5.8m. *No disabled access.*

There are three sessions per day:

morning, afternoon & evening.

Kitchen facilities by arrangement

For bookings and more information contact:

**01736-756055**

The switch-on this year is on Friday **November 23**, that's only seven weeks away and Hayle is a very big place to light up.

The Winter Carnival this year is on **December 1**.

*The Lights Team*

## Hayle in Bloom wins GOLD!

**33 members of Hayle in Bloom attended the Awards Ceremony which for the first time was held in the Tregenna Castle Hotel, St. Ives on Thursday 20<sup>th</sup> September 2007.**

The weather, sad to say was damp and dismal, such a shame for the 350 or so people who attended from

# **HAYLE CYCLES**

**MOUNTAIN-ROAD-BMX  
SPECIALIST**

**BICYCLE SALES & REPAIRS**

**\*CHRISTMAS BIKES IN  
STOCK\***

**36 Penpol Terrace,  
Hayle, TR27 4BQ**

**01736**

**753825**



## **The Farm Shop**

**31 Penpol Terrace  
Hayle**

**Open 6 days a week  
8am - 5pm**

**For all your local produce,  
fruit, vegetables, plants &  
flowers, free range eggs.**

**Cornish potatoes.**

**Now in:**

**Cornish Daffodil Bulbs,  
& Autumn Crop of Straw-  
berries & Raspberries.**

so many towns – many out of Cornwall up to Bristol and beyond.

After a buffet lunch the presentation began and Hayle received a GOLD Award again. (We were hoping to receive the Cup as well but we should be pleased with Gold considering the awful wind and weather we had prior to the judging.) We also picked up a Neighbourhood Award (Certificate of Merit) for our Millpond Entry.

Members of Hayle in Bloom have been enjoying a well-deserved rest since the end of July apart from our 'adopt-a-plotters' who are still diligently weeding the various flowerbeds etc. around Hayle. I would like to say a very big thank you to all of them and hope that they know their dedication is very much appreciated.

I mentioned that we have been enjoying a rest but in fact we have had our busy times. On 18 July (same day as our Regional Judging) I was invited in the evening by Connor Downs Gardening Club to give a talk about Hayle in Bloom. This was a new experience for me and although he had had a very long and busy day, Brian Hosken from Penwith District Council came along with me and was such a support. We had a great evening with a great bunch of happy gardening people.

Another big event in our calendar was the photo-shoot of Hayle by the Royal Horticultural Society on 28 July. Hayle was one of ten towns in the country to be selected by the RHS for some photographs in their new brochure and advertising and I am so proud that Hayle is being recognised. It was a great experience

for all those members of Hayle in Bloom who came along at very short notice.

The Library Project of a reading and butterfly garden commenced on 19 September and we are grateful to George Brighton, Jewsons and Chris Lello for their sponsorship of help.

On Thursday 26 September I shall be in Coventry Cathedral along with Brian Hosken from PDC, Margaret Tanner (our Secretary) John & Lorna Coombe (Hayle Deputy Mayor and Mayoress) and Joan Tanner PDC Chairman to see hoe Hayle and St. Ives fared in the Britain in Bloom Awards, believe you me we shall all have everything crossed for that! I would add that we are going at our own expense.

Our next meeting is on Monday 01 October commencing at 7.30pm at

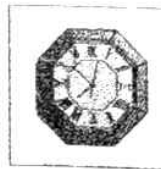
Hayle Rugby Club. If you are interested, please come along, you will be made very welcome. We are a great bunch of individuals and love doing what we do.

You can also visit our website: [www.hayleinbloom.co.uk](http://www.hayleinbloom.co.uk) kindly set up by Cllr John Bennett.

**Marjorie Roberts,**  
**Chairman Hayle in Bloom**

## N.G.S CLOCK REPAIRS

Nicholas G. Stephens  
Clock Repair Technician



Redruth Indoor Market  
3, Higher Fore Street  
Redruth

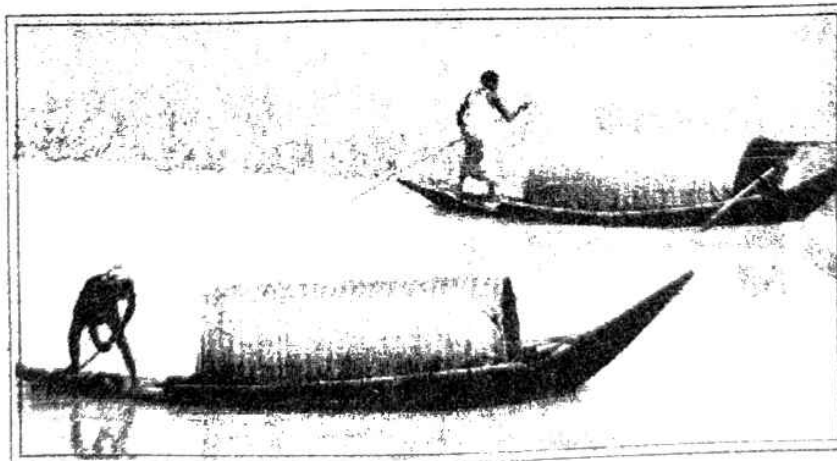
Tel. (home) 01736 757814  
(mobile) 07877 958253

TR15 2AJ

# G r a m e e n T a n d o o r i

*Restaurant & Take-Away*

*... Bangladeshi/Indian Cuisine ...*



01736-758470    01736-758460

4 Hayle Terrace, Hayle • Fully Licensed & Air Conditioned  
Open 7 days a week: 12-2pm & 5:30-11:30pm • [www.tscint.co.uk](http://www.tscint.co.uk)

# F.L. KEAST

F.B.D.O. Dispensing Opticians

18 Commercial Road,  
HAYLE  
01736 753145

21 Alverton Street,  
PENZANCE  
01736 366106



Light intelligent lenses  
For UV intelligent people

Rodenstock ColorMatic™ Extra

*Range of stylish frames*

Single Vision £98.00  
complete  
Variofocals £155.00  
Complete

Rodenstock. As you see

## Hayle & District Bowling Club

We have had a good first season and now have both an equipment shed and a Portacabin as a temporary Clubhouse.

We hold training sessions on a Sunday morning and invite anyone to come along and try out a game of bowls. We are situated opposite Penpol School.

We are going to hold Winter Leagues from the beginning of October. Anyone interested please ring Len on 01209 216660.

On Tuesday September 25 we started holding Short Mat Bowls at Hayle Rugby Club. Please ring Mr & Mrs R. Blight on 01736 754845 if you are interested. *K. Jewell*



### ROYAL BRITISH LEGION HAYLE BRANCH

Hayle Royal British Legion is again making arrangements for the Poppy appeal and the Remembrance Sunday Service at the Memorial. This will be on November 11 at 10.50am – 11.25am. Along with the Concert at the Methodist Church at Carbis Bay, do join us.

The Memorial Garden in front of the Passmore Edwards Institute will again have crosses for you to place in remembrance of loved ones, but there will not be a collection box this year as last year's box was stolen.

We will be asking people to put their donation in any collecting box

they come across.

It is with regret we announce the death of Albert Rutherford, you may remember him, he laid our wreaths throughout the 90s. We offer his relations and friends our condolences.

Always on the cadge – this year we have raffle tickets for sale with good prizes, all proceeds go to the poppy appeal. Tickets are available at the Copperhouse Inn and the Cornish Arms. Perhaps you would like to sell some for us, apply to Alan 01736 754521.

**Alan Conquest,  
Welfare & Branch Secretary.**

## **Kate DeWreede** *Guitar Tuition*

Acoustic, Electric & Bass  
Guitar Lessons  
*Music Theory, if required*  
Tel: 01736-753709



\*\*\*\*\*

### **Charity events at Café 1**

Wine & Wisdom Quiz in aid of  
children's hospice SOUTH WEST  
Saturday October 13 at 7.30pm

\*\*\*\*\*

Hayle Samba Band will be playing  
on November 2 at 8. pm.

\*\*\*\*\*

## **PRATTS MARKET NEWS**

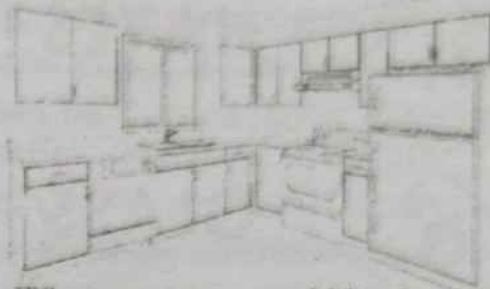
**Hayle Electronics have ceased trading in the market, and Hayle Bait & Tackle have moved into their unit on the ground floor.**  
This larger unit has enabled them to

## **FOUNDRY INTERIORS**

### *Kitchens & Flooring*

*Tel: 01736-755095*

*Mobile: 07894-814787*



- ▶ Why not give your old kitchen a facelift?
- ▶ Huge range of doors, worktops & appliances professionally fitted
- ▶ Complete kitchens also supplied custom-built with rigid 18mm colour-coordinated cabinets
- ▶ Laminate flooring a speciality
- ▶ For friendly, personal service, call Andrew on either number

## **Café 1**

At St. Erth Industrial Estate  
alongside the A.30.  
Ample Free Parking.

Now open every evening Mon—Sat  
until 8pm. Sun. until 5pm  
Tues night is Curry Night

Home-made Cakes and Desserts  
Lunchtime specials  
Steaks our Speciality  
Takeaways

# **01736 756123**

Now taking Christmas bookings.  
Room available for Private  
Functions.

<b>R</b>	<b>ROY</b>
<b>H</b>	<b>HAYES</b>
<b>G</b>	<b>GLASS</b>

For all your glazing needs  
Over 40 years' experience

Unit 2, Prykernow  
Penpol Avenue  
Hayle TR27 4NQ  
- Good parking -  
Tel/Fax: 01736-754023  
Mobile: 07880-530795

the Market Pet Shop on Saturday 15<sup>th</sup> September. Anyone with any information please phone Claire on 01736 752866.

## PET PORTRAITS

Local watercolour artist & pet owner Stephen W. Driver will paint or draw your best friend, for a reasonable fee, to your satisfaction.



Phone without obligation:

**01736-740646**

Come & see for yourself!



**KIND OF  
CORNISH**



greatly enlarge their stock. Their phone no. is 01736 758588.

New traders **I.C.U. Signs**, proprietor Matt Essex, ( who printed our lovely Christmas cover last year) have moved into the unit vacated by Hayle Bait. The phone no. is 01736 758237.

Upstairs, in **Elle's Salon**, a fully qualified barber, **Emma** has joined the staff of the popular hairdressers. Emma does a full range of barbering from modern to traditional, no appointment is necessary. Phone no. 01736 752522.

All other previously existing businesses are still trading in the market, and the main premises will be getting a facelift at the end of September, when the floors will be renovated, sanded and polished.

**A baby tortoise was stolen from**

**Graham Fitkin, a talented pianist and composer, was born in West Cornwall in 1963.** He has become one of the foremost contemporary British composers of his generation, and has recently collaborated with Ruth Wall, one of the UK's leading harpists, in a group called Fitkin Wall. Their new CD 'Still Warm' features music performed live during the recent St Ives Festival. The work has been described as a series of mini concertos, and the majestic harp melodies are set against a sumptuous background of synthesisers and sampling, giving a melodic, lush sound. Many potential listeners run a mile at the thought of modern classical music, but Graham Fitkin's works are unashamedly tonal, with an ambient feel which makes them immediately enjoyable to listen to, and Ruth Wall's harp playing is of the highest quality. Graham Fitkin is yet another example of the fine and

varied musical talent originating in the Duchy of Cornwall, and in Ruth Wall he has a co-partner whose playing brings out the best in his music. (55 mins, £13.50.)

The vocalist/instrumentalist Mandy Fox, after taking time out for a period of shamanic study, has re-emerged as Danu Fox, and I reviewed her excellent first album under her new name in last October's Pump. As with that CD, this one is a strong reflection of Danu's new beliefs, with some tunes featuring evocative, plaintive wordless melodies and a simple, unobtrusive percussion-led backing, with Danu's harmonium accompanying her own voice. Others, like the hypnotic 'Danuih', which is based on a fragment of a traditional Irish folk song, have lyrics of a devotional nature. The gentle and sympathetic backings for the album are vari-

ously provided by the excellent Pete Kubryk-Townsend, double bass, Joe Cang, various percussion, and Michael Tingle on various instruments. In keeping with Danu's beliefs, this is simple, contemplative music, and the release of this CD will surely be welcomed by Danu's many followers and admirers. (44 mins, £13.50)

Both of the review CDs, and many other items by Cornish and Cornwall-based artists, as well as a large selection of classical music, jazz and nostalgia, can be purchased from:-

**West Penwith Music**  
**Union Street**  
**Penzance**  
**Tel. 01736 364440**

*Goudie Charles*

## ROSEWARNE MANOR

*Connor Downs*

*Restaurant, Bar & Function Venue*

Re-opening in late autumn following extensive refurbishment.

Offering superb restaurant & bar menus along with Sunday Carvery and function facilities, all set in beautiful surroundings.



### *Job Vacancies*

Now recruiting staff in all departments. We are seeking experienced chefs, kitchen, waiting, bar & cleaning staff. Full-time & part-time positions exist in all areas. Applicants should in the first instance contact Cyril Eustice at The Lamb & Flag on 01736-753289.

# CHIROPRACTIC – MAINTENANCE

## Why do I need further treatments?

We are familiar with the concept of getting a MOT for our cars, so why do we find it so difficult to think of our bodies in the same way? Our cars we can scrap. Our bodies are for life!

Most patients who seek chiropractic care have some underlying problem that is either causing the symptoms or aggravating other symptoms. The factors that have given rise to the underlying problem are generally caused by our lifestyles, be it work, sport, hobbies or simply wear and tear. Those factors are unlikely to vanish unless something quite dramatic changes in our lives and how realistic is that?

The things that have created the

original problems are probably still going to be with us. With advice from the chiropractor the risk of further injury, pain or general discomfort will hopefully be reduced significantly. To ensure you do not return to the state that brought you seeking help originally, maintenance is always advised.

It is also worth noting that a significant number of skeletal disorders are in fact symptom-free. You are often not aware of these until something happens to aggravate your condition. How familiar is "I just bent forward to stroke the cat and suddenly my back went!" What has happened is that your joints and muscles have been absorbing the stresses for some time, possibly years. Your body also compensates for any misalignment through other joints and muscles working on behalf of that unstable



CORNWALL CHIROPRACTIC CLINIC

— maintaining your lifestyle —

[www.cornwallclinic.co.uk](http://www.cornwallclinic.co.uk) Telephone:- 01736 759088

••• OPEN DAY •••

On the 6th October, from 10am to 2pm, we will be holding an Open Day at:

Connor Downs Surgery  
Turnpike Road, Connor Downs, Hayle TR27 5DT

Use this as an opportunity to ask questions about chiropractic in a relaxed and informal environment. Demonstrations and a video of the treatment process will be available.

Joining John will be sports-injury therapist Lorna Murray and personal trainer Matt Roberts, and several patients.

Look forward to seeing you there!

joint. This process will often mean you go about symptom-free until something gives out and you suddenly find yourself in pain.

Maintenance is just a proactive way to ensure these stresses and mis-alignments are picked up before they become an issue and lead to a repeat of your original condition. You should also note that by keeping your body free of spinal misalignment you are also securing your nervous system from any adverse effects from mis-aligned joints. That will help you stay healthy.

Maintenance need not cost the earth, in my experience a three monthly visit for most will suffice. That's £2.40 a week. A cost of a drink!

**John Christian Tillyard –  
Registered Chiropractor  
Cornwall Chiropractic Clinic  
01736 759088**



07974 647524  
01736 755971

**COMPUTER HELP AND SUPPORT.** We can help with any problems or training. Visits arranged to suit you. No Call out charges.

[www.bizandbytes.co.uk](http://www.bizandbytes.co.uk)  
[enquiries@bizandbytes.co.uk](mailto:enquiries@bizandbytes.co.uk)

*A local Company here to help you*

\*\*\*\*\*  
**Tip from Barry:** Need a heart-shaped cake? Bake two cakes, one round and one square. Halve the round one. Position the square cake like a diamond and add the half circles to each top side. Then decorate.  
\*\*\*\*\*

# Fernleigh BED & BREAKFAST

En-suite, Colour TV,  
Coffee & Tea making  
Facilities in all rooms.

**NON SMOKING**

**26 COMMERCIAL ROAD  
HAYLE  
CORNWALL  
TR27 4DG**

**TEL: 01736 752166**

[mikelynreffold@fernleigh.fsbusiness.co.uk](mailto:mikelynreffold@fernleigh.fsbusiness.co.uk)

LYN & MIKE REFFOLD

## JOLLY BODGER WAREHOUSE

77 FORE ST  
HAYLE

01736 752091



**WE STOCK:**

**BLACKFRIARS  
PAINTS &  
PRODUCTS.**

**FLO GAS**

**CAMPING GAZ..**

**HARDWARE,**

**GIFTS & SOUVENIRS**

**AND MUCH MUCH MORE!**

**\*HOUSE & CAR KEYS CUT\***



Want to play music?  
You're never too old!

*I'm a coach, former session musician (guitar, bass, harmonica), and a Registered Guitar Tutor. With over 30 years' experience, I specialise in helping you learn in your own way, to read music or play by ear. I teach acoustic and electric guitar, bass guitar and blues harmonica.*

Learn music the fun way  
with Graham Smith.

Call me on 01736-740141

*(based near Penzance)*

graham@calmtime.com

www.calmtime.co.uk

Hall for Gwinear,  
Saturday 3 November at 8pm  
Presents **MARTIN SIMPSON**  
Doors open at 7.15pm with a pay  
bar. Tickets £7.00  
Bookings: 01736 850781

- Rushing home early from work to pick up the kids?
- Don't know what to do with them in the holidays?

**We can help!**

**Hayle Out of School Club**

*(rear of Penpol School)*

**01736 757695**

Ages 4-12

Ofsted Registered



## HAYLE TWINNING ASSOCIATION

The Hayle Twinning Association have recently returned from their annual exchange visit to Pordic Brittany which followed the visit in May from our French friends. The visit in August to Pordic of over 40 Cornish people marked the 10<sup>th</sup> anniversary of the Twinning of our two towns; this was greatly enjoyed by all. After a smooth crossing the travellers were met in Pordic by a welcoming committee with refreshments. A presentation of a Cornish granite sundial was then made to Pordic from Hayle Twinning Association to commemorate this occasion.

On Saturday after touring the town by coach and stopping at places of interest an inauguration of a round-



**CLIFFORDS**

**PLUMBING**

and

**HEATING**

For all your plumbing and heating needs

From a dripping tap  
to a complete bathroom  
or full central heating

Friendly, reliable and tidy service

**01736 755170**

**07761 938183**

about named after Hayle took place. This was officially opened by the Mayor of Pordic, the President of Pordic Twinning Association Clare Danton and Sonia Glasson the Chairperson of Hayle Twinning Association who represented Hayle along with ex chairman and ex presidents of both towns. This was followed by a 10<sup>th</sup> anniversary dinner with entertainment in the town hall.

Sunday was spent with the host families enjoying the local countryside and fare. On Monday we travelled by coach to a castle nearby and a dam with lunch provided in a local manor house. A tour of the coast followed with time to stop and enjoy the sunshine.

On Tuesday morning we all said our farewells and returned via a supermarket for some shopping and then after a short lunch stop in Roscoff we returned to Plymouth having enjoyed another smooth crossing.

Hayle twinning Association meets on the 2<sup>nd</sup> Tuesday each month and we are always keen to welcome new members to join us; for further information you can read about us on the Hayle Town Council website.

We hold various events for fundraising during the year. In October we have a beetle drive and quiz, in November we have a body shop party and in December we will be holding coffee mornings, Xmas Fayre, and going on a Xmas shopping trip to Exeter. For information on any of these please contact Sonia Glasson on 01736 754531

**Sonia Glasson**

\*\*\*\*\*

*What does a dentist call his X-rays?  
Tooth-pics.*

## Vehicle Transport and Recovery



Fast & friendly service

Service & M.O.T. work undertaken

**Malcolm Hendra**

Mobile: 07768 35 44 33

Home: 01736 754213



ALL OF THE TIOLETS  
AT JOPPA POLICE  
STATION HAVE BEEN  
STOLEN. COPS SAY  
THEY HAVE NOTHING  
TO GO ON.

## Phillack's Welcome

What is it lad, what can you hear?  
The sound of Phillack's bells, so clear  
Time was, my father and his as well  
Heard and loved the Phillack bell.

They rang to tell of England's news  
They called the faithful, to their pews.  
Of wreck and rescue, peace and wars  
They warned as danger neared our  
shores.

The crowning of a king and queen,  
A greeting to each changing scene  
Pealed for a wedding, a marriage blest  
Tolled when a loved one is laid to rest.

They told us that a war was won  
Our world was free, the peace begun.  
The chimes ring out for each New Year  
The old year's gone, the new one's  
here.

Some may not know or even care  
How long those bells have sounded  
there

Yet how much poorer life would be  
If they weren't there for you and me.

That's what you hear lad, amidst life's  
pages

A voice passed on, down through the  
ages

The sound of sorrow, peace and joy  
Now welcomes you, my little boy.

**James Davey.**

### An Appeal:

One of the great pleasures of our  
neighbourhood is the sound of  
Phillack bells ringing across Cop-  
perhouse Pool. The present 8 bells  
have been rung weekly since 1928,  
but for centuries before this, Phillack  
bells have rung.

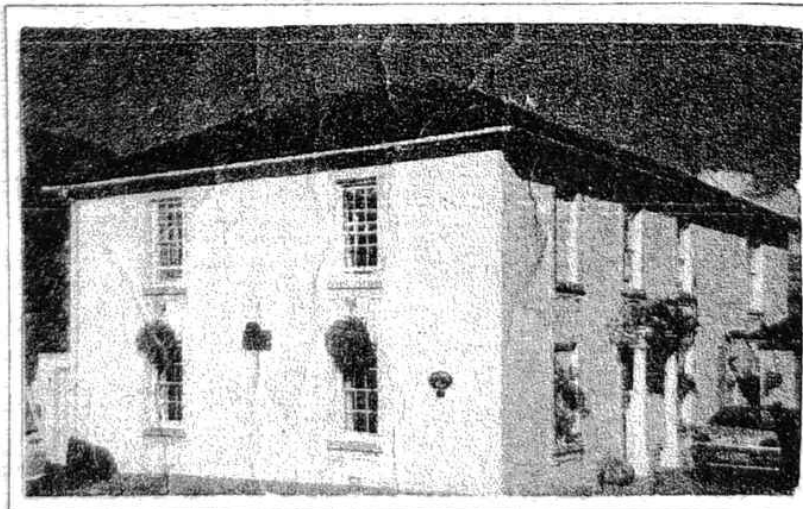
We want this wonderful tradition to

## CRAFORD HOUSE BED & BREAKFAST OPEN ALL YEAR—CHILDREN WELCOME

ALL ROOMS  
EN-SUITE

NON  
SMOKING

OFF ROAD  
PARKING



LUXURY  
HOLIDAY  
APARTMENT  
TO LET

PETER & PEGGY DARLOW

01736 752618

Foundry Hill \* Hayle \* Cornwall \* TR27 4HW  
cranfordhouse@hotmail.co.uk

continue, SO, would YOU like to learn the art?

Do YOU fancy joining a happy, sociable group of people on Tuesday evenings and/or Sunday mornings?

You do! Ring Mike on 01736 754867-

## **THE PAINTER**

**INTERIOR & EXTERIOR  
PAINTING & DECORATING**

**FREE QUOTES**

**B.J. WEBSTER**

**01736 874828**

**0779 167 3216**



## **UNITARY COUNCIL FOR CORNWALL**

The central government has given approval to Cornwall County Council's proposals for a unitary council for Cornwall. What does this mean? To start with, the term itself is misleading. Town and Parish Councils will continue to exist after the changeover so there will be, in effect, two tiers of government. Penwith District Council (and the other district and borough councils in Cornwall) will be eliminated and the services it currently offers will be provided by the Unitary Council. The Unitary Council also wishes to take over some of the responsibilities of non-elected bodies such as the NHS Boards, the Regional Assembly and the Regional Development Agency.

At present, Hayle is represented by 6 District Councillors and 2 County

## **PLANTECH**

THE FRIENDLY RELIABLE SERVICE

- Lawns cut and borders weeded
- Hedges trimmed
- House, garden & building waste taken
- Garden clearance work
- Gravel, sand, topsoil delivered & laid
- Garage and loft clearances
- Free no obligation quotes

(Tel) 01736 754401 / 07979546434



Councillors. Under the County Council's proposal Hayle will end up being represented only by 2 unitary councillors. There will be no change to the Hayle Town Council which has 15 members. The total of 82 unitary councillors representing Cornwall is also under discussion and there is the possibility that there may be an increase to a number closer to 100. Unfortunately, this will require the deliberations of the Boundary Commission to realign all of the electoral boundaries in the county – another major upheaval. Local issues are discussed pretty thoroughly and effectively in the district council chamber which has 35 elected members. It is hard to imagine a manageable debate with 100 councillors. And, in fact, this won't happen because the Unitary Council will operate the same cabinet system as the

County Council uses now – which means that 10 ‘portfolio holders’, chosen from the controlling political party, will make all the decisions.

The County’s proposal is unclear on details of how planning will be handled. Currently, planning applications are submitted to the local district council. When the Unitary Council is in effect there will be four Area Planning Sub-Committees – although the boundaries of these are yet to be finalised. It looks likely that approximately the areas of Penwith and Kerrier will be combined to form our local planning area. Other services in Hayle will be accessed through one of the 16 Community Network Areas (CNA) managed by councils. Initial proposals were for Penwith and St Ives to be a CNA. Hayle Town Council pointed out that this was not a natural grouping and proposed

that the area covered by the Hayle Area Plan (Hayle, Gwinear/Gwithian and St Erth) might make a more sensible area. Clearly, there are a lot of issues still to resolve.

In May 2008, if all goes to plan, there will be elections for representatives to the ‘Shadow’ Unitary Council. In May 2009, the County Council and District Councils will be abolished and the shadow councillors will become full unitary councillors. During the ‘shadow’ year the unitary councillors will work with the county councillors to ensure a smooth transition.

Town and Parish councils are being offered additional powers. Again, it is unclear what these powers will be and how they will be implemented. Some delegated powers that have been floated include: library service, tourist information centres, street naming,

## **FREE COLLECTION & DISPOSAL**

for all MOT failures, non-runners, accident-damaged cars,  
small vans and motorbikes.

Quick efficient service – all areas covered.

**Call us FREE on  
0800-652-4535  
or 01736-759152 / 07748-678159**

**[www.hayle-recovery.co.uk](http://www.hayle-recovery.co.uk)**

Environment Agency Registered. DVLA Destruction notices issued.

\* \* \* \* \*

Please note: We no longer accept vehicles delivered to our yard.

waste recycling and management of public open spaces. Delegated powers have been offered in previous re-organisations, too, but have not materialised.

My personal preference, and that of many district councillors, would have been the so-called Pathfinder model in which significant reform of district councils would have taken place without the upheaval of yet another major reorganisation. Penwith District Council has voted to request a Judicial Review of the process leading to the selection of the County Council's Unitary Council bid. It is unlikely, however, that this will overturn the decision to move towards a unitary council for Cornwall.

For more information go to the Cornwall County Council web site at [www.cornwall.gov.uk](http://www.cornwall.gov.uk) and click on 'One Cornwall, One Council'.

*John Bennett, Councillor for Hayle South Ward, Penwith District Council and Hayle Town Council.*

[john.bennett@penwith.gov.uk](mailto:john.bennett@penwith.gov.uk)  
[www.hayle.eu](http://www.hayle.eu)

\*\*\*\*\*

**HAYLE BOOK AND ANTIQUES  
FAIR**

**SUNDAY 25 NOVEMBER  
11AM - 4PM**

**PHILLACK CHURCH HALL.**

**A selection of interesting stalls.  
Antiquarian books, maps, paintings, prints  
and drawings, furniture, retro glass, post-  
cards, coins, textiles, memorabilia &  
ephemera of all kinds.**

**Admission free, wheelchair access.  
Refreshments.**

**For more details contact Cormellian  
01736 755890 or 07974 000747**

\*\*\*\*\*

**SkinLife**

**for all your Skin care  
enquiries, questions, products &  
Treatments**

**Kim Jeffrey**

**I.T.E.C., C.I.B.T.A.C., O.I.C.B.(Ox.)**

**07891 235043**

**Dermalogica approved stockist**

**Professional Skin Therapist &  
Electrologist + Adv. Cosmetic Procedures**

**pores for thought..... your skin matters**

**PENPOL GARAGE  
IN TUNE WITH TECHNOLOGY**

**ALL MAKES OF VEHICLES  
REPAIRED & SERVICED**

.....  
**AIR CON RE-GAS  
£ 40 + VAT**

.....  
**ENGINE MAN. ABS. AIRBAG  
DIAGNOSTICS  
FREE PRE-MOT CHECK**

.....  
**CHECK US OUT**

**[www.GoodGarageScheme.com](http://www.GoodGarageScheme.com)**

**TEL: 01736 757011**

**MOB: 07921 218448**

Cornwall Soapbox.co.uk  
Give a Gift of Purity this Christmas

Traditional Handmade Soaps  
Organic Naturel Skincare

**Opening Times**

Thursday & Friday 10:00-3:30  
Saturday 9:30-12:30  
Foundry Farm, Foundry Lane Hayle  
01736 758358

**THE VIEW FROM THE STEEPLE**

Here we are again! It has been a fairly quiet summer, what we actually had of it!

Jim Whitlock's exhibition was one of the most successful we have had since we started in 1998, and mainly brought a few rays of welcome sunshine. He will be back in 2008, and in 2009 he has been invited to exhibit in Truro Cathedral.

Our evening with Praze Hayle Male Choir was also very enjoyable. They sang several new pieces including 'Kentucky Lullaby' and 'The Owl and the Pussycat'. Their guest singer was Joan Parton.

Although we limited church events this year, we did have coffee mornings to raise funds and took part in the Lions Fun Day during Heylfest Week.

There were two important events since we last met. After a long vacancy following Canon Tony Neal's retirement, our new Team Rector has been appointed. Our former Team Vicar, Rev. Leslie Attwood, will take over the Rectory and a new Team Vicar will be appointed in his place very soon. Rev. Attwood will be formally licenced on Thursday October 5 at St. Elwyn's.

# COLIN'S MARKET GARDEN



find us at  
THE FRONT  
PRATT'S MARKET  
FOUNDRY SQUARE  
JUST  
LOOK  
FOR THE  
FLAGS!!

## APPLES – did you Know:

**WHEN YOU FEEL PECKISH APPLES ARE AN IDEAL HEALTHY SNACK?**

**APPLES ARE A GOOD SOURCE OF VITAMIN C AND WITH BIOFLAVONOIDS CAN HELP KEEP YOUR IMMUNE SYSTEMS STRONG?**

**AT COLIN'S MARKET GARDEN WE USUALLY HAVE A CHOICE OF SEVEN VARIETIES OF APPLES TO PICK FROM?**

NOT A LOT OF PEOPLE KNOW THAT!!

BUT THEY KNOW YOU'RE NOT MICHAEL CANE!!



fruity facts by bajjer arts 756756

Secondly, the Team Ministry has been joined by a new curate. Previously at Linkinhorne Church, Rev. Elizabeth Foot is undertaking her second curacy at St. Elwyn's, because the newly-appointed minister at her former parish was not able to continue with her tuition. She is already proving to be a very valuable addition to the Godrevy Team.

Now, as the autumn is almost with us and my friends the swallows prepare to depart we are swinging back into action again as the seasonal events are fast approaching.

So, I must fly, my friends!  
See you all again, soon!

*Sanctuary Sparrow.*

## HAYLE PUMP LOSES SECRETARY

Roger Winterburn, who has been the Pump's secretary for over 5 years, is leaving Hayle to take up residence in Somerset. Roger joined our small team at a time when we were making radical changes to our equipment and procedure, and he made an important contribution to that process. He was also the Community Agent for the Hayle Area Plan Partnership. He will be sorely missed by all of us; we would like to thank him most sincerely for all his secretarial and other work, and wish Roger and his wife Carol a long, healthy and happy life in their new home.

***The Hayle Pump Team***

What's the difference between an angler  
and a dunce ?

An angler baits his hooks and a  
dunce hates his books.

## Jewellery Workshop

Vanessa Page

Goldsmith & Silversmith

- Repairs •
- Hand crafted Engagement Rings •
- Hand crafted wedding rings •
- Stone Settings •
- Pearl & Stone Re-Threading •
- Ring Re-Sizing •
- Replacement Watch Batteries •

*"Your Designs brought to life"*

Foundry Farm, Foundry Lane, Hayle  
Down Lane opposite Jewsons

Open Mon-Sat 10-5

**Enquiries 01736 755996**

## Sore Feet?



Professional Help For Sore Feet

**Michele Young, M.C.F.H.P. & M.A.F.H.P.**

For friendly help & advice about all foot problems,  
nail trimming, corns, calluses, verrucas, etc.

Tel: (01736) 753348 • Mobile: 07900-628131

# Letters.....

## Letter

### Knit Knack

My friend Sue and I are starting a new knitting and crochet group in Hayle, beginning 1 October 7-9pm at the Passmore Edwards Institute. We would love you to come and join the group, no experience is necessary and all ages and genders are welcome. Please bring ideas, needles/hooks and wool to get started, help and advice will be provided and some yarn and needles will be available. Experienced knitters also welcomed.

Come and join us, have some fun and learn new skills. Share the passion of knitting and surprise yourself with the results.

Parking is available at the rear of the Institute. Each session will cost £2.00 per person.

Please ring me on **01736 752265** to confirm your place or make further enquiries. **Barbara.**

## Letter

### Re-cycling problems

I am as keen on re-cycling as the next person, but it can prove difficult to reduce one's carbon footprint.

For example, when I take general paper or plastic bottles to the Commercial Road car park, more often than not the bins are stuffed to overflowing and it's impossible to get a single further item into them. Maybe the waste people haven't caught up with the rapid 'greening' of the gen-

eral population, and need to increase their turnover of containers.

Then, about a month ago, I left my fortnightly recycling bin of bottles and tins outside as usual. When I came to collect it, the lid was missing, and I have not been able to reclaim it despite putting the word round amongst my immediate neighbours and reporting it to the police. (It did have my postcode written on the lid.)

Finally, under the new monthly arrangements I put out some garden cuttings, bound and stuffed tightly into a cardboard box. Within about half an hour a neighbour rang to tell me they were scattered all over the pavement, with the box nowhere to be seen.

Saving the planet obviously isn't going to be easy!

Name and Address Supplied

## FOOTSTEPS



5 Penpol Terrace, Hayle

01736-757735



Specialising in wide-fitting footwear for men & women. All dancewear: ballet, tap shoes, etc.

New autumn styles arriving daily.

## Letter

What a waste of time.

What a lack of people.

Decided to go to Millpond Gardens to hear Hayle Praze Choir and the Samba Band. No chairs provided.

Grass was long and wet so I walked home again. A sheer waste of time and energy. Being an OAP I was not

going to sit on wet grass.  
It was a very poor turnout. Also the organising committee could have done better?

O.A.P. Millpond Avenue.

#### Reply from editor:

I was among the audience at the concert, (which was put on despite a lot of setbacks), and thoroughly enjoyed it. There was a good crowd of spectators also appreciating a free afternoon's entertainment; those who felt unable to sit on the grass brought fold-up garden chairs. I think the organisers should be congratulated not denigrated.

#### Letter

#### Unitary Authority

There has been a huge amount of press comment, speculation, and hysteria on the subject of a Unitary Authority for Cornwall. My own association with Hayle goes back 37 years, first as a businessman and, for the last 14, as a resident. On many occasions I have felt the need to contact the local authorities, but I have invariably by-passed Penwith and gone straight to Cornwall County Council – indeed, the very helpful Shirley Oliver is currently pursuing a suggestion of mine to improve the parking situation in Penpol Road. My reasoning for habitually ignoring Penwith District Council is that County is where the power lies, and as we have County Councillors who are Hayle residents, the process is short-circuited by going straight to the top. We currently have two County Councillors, and apparently we will retain this number under the new arrangements.



## O'DELL SIGNS

OF ALL TYPES  
Signwriting, Perspex  
Plastic, Engraved,  
Magnetic, Posters,  
Illuminated signs,  
COMPUTER CUT  
VINYL LETTERING  
for Vehicles & Signs

*Embroidery*  
for  
Businesses & Clubs

**HAYLE 01736 753656**

1, Turnpike Road, Connor Downs.

Hayle Town Council currently has very few decision-making powers, but I understand that, as at present, 15 councillors will be retained under the new arrangements. Our Penwith District councillors doubtless do a good job in representing the interests of the Hayle area, but I can see no problem with the proposed abolition of PDC provided that the Hayle Town Council then consists of locally elected councillors who, rather than their current limited role, are granted the same executive and representational powers to those currently enjoyed by Penwith District councillors.

One final point – presumably Cornwall isn't the first area to opt for unitary status. How has it worked out for other UK areas which have adopted it, and have the forecast cost savings and other advantages materialised?

Goudie Charles,  
Penpol Road, Hayle

## Millpond Update

I must start with an apology because we did not actually open on **May 27**. The heavens opened and the resulting deluge washed out the event yet again.

The weather might have been a touch indifferent, but it has not all been doom and gloom. After their disastrous start our chicks produced a number of second clutches of ducklings, a fair percentage of which were successfully fledged, returning to the ponds at the end of August.

The drakes came back earlier to undergo their "eclipse" or moult and very tatty they looked too for a while.

Our small wild flock began to arrive from the end of July, the drakes first and then the ducks and duck-

lings. We have about 30 feral mallards each autumn which over-winter on the ponds.

One of our three cygnets disappeared and in spite of the nasty rumours about what happened to it, nothing could be proved one way or the other. The remaining pair, now named Selene and Helios, after the actual twin children of Anthony and Cleopatra have thrived and give a lot of pleasure to our visitors.

The Millponds were entered for a Neighbourhood Award and were judged on July 18<sup>th</sup> after the main adjudication for Hayle in Bloom. At the prize-giving ceremony of Britain in Bloom at Tregenna Castle on September 20, it was announced that the Millponds had won a Certificate of Merit, the highest award.

We had a photo session with the

## PLANET Showrooms *great ideas for your space*

- **Kitchens** - Bespoke & Contemporary Designs
- **Bathrooms** - Modern, Minimal & Traditional
- **Showers & Wet Rooms** - Enclosures, Walk-ins & Tanking Systems
- **Natural Stone & Slate** - from around the world
- **Ceramic Tiles** - direct imports from Italy

**01736 757453**

Unit K1 St. Erth Ind Est, Hayle TR27 6LP

**24 HOUR HOTLINE - 07879 023 237**

**OPEN every day** (Sunday by appointment)

Duravit stockist for Cornwall

TRADE enquiries very welcome

**PLANET**

A stylized graphic of a planet with a dark, curved shadow or ring-like feature extending from its bottom right side.

Royal Horticultural Society photographer on August 28 and a visit by the Rural Development Agency and Penwith District Council officers on September 11 to inspect the work done on site with their funding during last winter. On both occasions our egrets flew in right on cue to create a suitable impression.

And finally the Millpond Gala Day took place in glorious sunshine on Sunday September 9. Praze Hayle Male Choir sang and Hayle Samba Band played during the afternoon and a guided walk rounded off the proceedings. From the feedback we have had people enjoyed the event and were pleased to see the results of the works carried out.

More will be done to improve the site this winter so watch this space!

**Georgina Schofield,  
Volunteer Wildlife Warden.**

## **P G Franklin**

Chapel Hill, St Erth

General House Repairs • Property Maintenance

Garden Landscaping

**NO JOB TOO SMALL**

Telephone: 01736-757360

Mobile: 07778-739341

## *Treglissou Gallery News*

**Art is at the most fragile level of commerce.** And how. Not a very successful summer for the Gallery, although a fair number of people came to look around. Comments were as favourable as ever, but pockets were long and arms were short. One of our artists even went

We are a Cornwall-based business with an online shop, gig listing page and a forum for chat, discussions and gig reviews.

As the owners of Cornwall Rock, we love Rock & Metal music and want to share our passion with anyone who is interested.



**www.cornwallrock.com**

In the Cornwall Gigs section Band Members can add their gigs for in and around Cornwall. Fans can add gigs they are going to as well. We set up this page because we know how hard it can be in Cornwall to find gigs and events to go to.

We love all genres of rock music at Cornwall Rock and really want to go out of our way to help support our home grown Cornish bands – so make sure you add your gigs to the listings page to get your fans to your gigs!!

to the expense and trouble of an exhibition and sold nothing at all, so it's not just me.

On a positive note some of the small items and cards sold, along with prints and pottery, some of which is now in Australia.

My part-time job meant I have not had time to develop my garden sculptures and planters, but winter is coming, when I shall be able to dedicate more effort to the project. There is also a possibility these items will feature on the Greenfields Nurseries website at some point, though that is still in development at the time of writing.

There may be an event of some kind up here before Christmas, probably consisting of an exhibition or sale, but I'll know more by the time the next Pump comes out.

Meanwhile, anyone wishing to view, or with general enquiries should first ring 01736 759472. My part-time work at the Nursery is still ongoing, but erratic.

*Linda King.*

*Treglisson Gallery, Wheal Alfred Road.*

*( Opposite the Dog Rescue Centre.)*

## **HAYLE JAZZ HITS ST IVES FEST**

Hayle jazz performers were prominent at the annual St Ives Music Festival, including Hayle Community School Jazz Band, which played the final day. So crammed into the allotted space at the Lifeboat Inn were the band members that it was difficult to be precise about the exact number of per-

formers, but there must have been about 16 musicians. The band has been in existence for 3 years, and owes much to the enthusiasm of the school's music teacher, Mandy Tomkinson, who sat in on trumpet throughout the performance. Mandy, in turn, told me that that the band is deeply indebted to Pete Kubryk-Townsend, the accomplished bassist/guitarist, who has enthusiastically whipped the band into shape, and conducted them on this occasion. The new school term has of course only recently started, so the band is inevitably currently in a transitional stage until new members are played in, and departing members replaced. For this occasion, however, the band were bolstered by the return of former older members Harry Whitehouse (Trumpet), Mark Hurrell (Keyboards), Jenna McCabe (Bass),



# **NEIL WADE**

***MOTOR ENGINEER***

***CENTRAL GARAGE***

***10A HAYLE TERRACE, HAYLE***



\*\*\*\*\*

## ***MOT CAR & MOTORCYCLE TESTING CENTRE***

***DIESELS & CATALYSTS TESTED\*SERVICING\*REPAIRS\****

***WHEEL BALANCING\*EXHAUSTS\*TRACKING\****

***TYRES\*BATTERIES\****

***PROVIDING SERVICING & REPAIRS TO ALL MAKES OF VEHICLE***

***TEL 01736 756512***

***MOB 07990 981546***

***HOME 01209 610651***

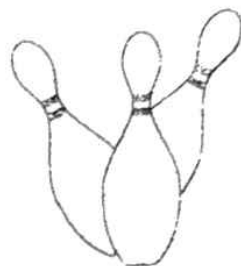
Phoebe Whitehouse (Tenor sax), Sam Gilman (Alto sax), Jordan Smith (Alto Sax) and Ben Curnow (Drums), and Mandy expressed her gratitude to these talented instrumentalists for returning to play this gig. Including the returnees, the age range of the musicians was 11 to 18 years, and the material included such gems as the Mission Impossible Theme, Lady Marmalade and the Pink Panther, all played with wonderful gusto. The large audience were clearly delighted by the exuberance and obvious enjoyment shown by these young musicians. The band is a superb advertisement for Hayle Community School and its music department – in Mandy Tomkinson's own words, it is going from strength to strength, and long may that state of affairs continue.

Elsewhere, Hayle's jazz diva Kris Gayle played a marvellously well received concert at the Western Hotel, accompanied by Hayle's piano maestro Viv Rodd and his trio. In the words of the St Ives Times and Echo festival reporter, this performance was 'truly great'. Kris and Viv played to a full house, which was in itself remarkable considering they went head-to-head on the same night with a sold out concert by the folk superstar Ralph 'Streets of London' McTell at the nearby Guildhall.

On the final Friday of the festival, Viv Rodd brought his own quartet to the Lifeboat Inn, with the brilliant young Paul Haywood on alto, tenor and soprano saxes, Pete Kubryk-Townsend on double bass and Damian Rodd on drums. The group played a storming couple of sets to a large and very receptive audience.

Forthcoming gigs for Kris Gayle in

## Country Skittles ...



..welcomes Pump readers of all ages.

4 traditional 9-pin skittle lanes

Restaurant & snack menu available at all times

Roast lunches served all day on Sundays

Fully licensed bar

Target shooting gallery

Crazy golf

Pool Table football

Air hockey Batak

Lots of traditional board games & many other games to play.

We cater for groups large and small, and provide an ideal venue for family get-togethers, birthday parties and works outings.

To get to us, take the B3302 out of Hayle towards Helston and turn right when you see our sign just past St Erth Praze. We are about half a mile up that road.

Booking in advance is advisable at busy times.

For further information ring us on 01736 850209

the area include the Watermill Letant on Friday 19<sup>th</sup> October and Friday 30<sup>th</sup> November. Kris is also performing at the Penzance Arts Club, Chapel Street, on Saturday 6<sup>th</sup> October. This will be something of a reunion, as she will on this occasion be partnered by guitarist/ vocalist John Knight, who played with Kris in her first ever band, the jazz-rock group Matrix. Kris has finished recording her new album, entitled '8 am', featuring orchestrations by Viv Rodd, and it will hopefully be out by the end of November.

Outstanding event of the autumn St Ives Jazz Club programme is the first appearance in Cornwall of the internationally known vocalist Norma Winstone, truly a legend of British jazz. The gig will be on Tuesday 27<sup>th</sup> November.

Further details of forthcoming attrac-

tions at the club are available on - [www.stivesjazzclub.com](http://www.stivesjazzclub.com)

**Goudie Charles**

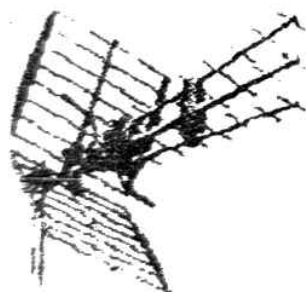
*Kris Gayle*

**VOCAL TUITION**

JAZZ, BLUES, ROCK, etc.  
TEL. 01736 757351 (Hayle)

Hidden Words by  
Cleverclogs.

This time we must think CLOTH  
Example; If you use Persil, knitwear  
keeps its colour. Answer: silk  
The first all correct entry out of the  
hat wins a voucher for £20 to be



# ALL AERIALS

**DIGITAL TELEVISION SPECIALISTS**

**Members of the Confederation of Aerial Industries**

**DIGITAL AERIAL INSTALLATIONS & UPGRADES**

**ALL WORK GUARANTEED \* FULLY INSURED \***

**COMPETITIVE PRICES \* PROMPT RELIABLE SERVICE**

**FOR FREE FRIENDLY ADVICE CALL JONATHAN**

**01736 759225**

**Mobile 07979503907 / Email [jon@allaerials.co.uk](mailto:jon@allaerials.co.uk)**

**[www.allaerials.co.uk](http://www.allaerials.co.uk)**

spent with any of our advertisers.  
There is a lucky dip prize of £5  
drawn from all entries.  
Closing date 20<sup>th</sup> November.

1. I have climbed an alp, a Catskill mountain and Ben Nevis.
2. I'm sorry you broke your Tuscan vase.
3. I needed some cash merely to put in the parking meter.
4. This cat's purr is soft and rich if fondled under its ears.
5. Spin the spindle and it will last a long time.
6. 'Bravo!' I led the cheering vociferously.
7. You must sign on the line, not under it.
8. When in Paris you can't help noticing the Eiffel Tower.
9. In the garden I mostly grow bushes and flowers.
10. She made Adam ask her for a kiss.
11. Must we educate everyone for free? He asked.
12. Give Barbara the apple she asked for.
13. It is the lesser genus of egret that you see.
14. There are two Olivers in his class.
15. Outside the shop there is a colourful awning.

Answers to quiz in last issue:

- |              |                |
|--------------|----------------|
| 1. Oman      | 9. Sri Lanka   |
| 2. Greenland | 10. Luxembourg |
| 3. Germany   | 11. Lithuania  |
| 4. Argentina | 12. Mongolia   |
| 5. Pakistan  | 13. Ireland    |
| 6. Indonesia | 14. Colombia   |

## COUNCILLOR TERRY LELLO CC



As your Town, District and County Councillor, I am here to represent you, share your concerns, and assist with any problems you may have. Every Friday I run community surgeries at the Children's Centre (the old Bodriggy School site) from 2-3pm.

My contact details:

- 01872-322570 (County Hall)
- 01736-757507 (Home)
- 07837-311632 (Mobile)

Email: [tlello@cornwall.gov.uk](mailto:tlello@cornwall.gov.uk)

## John BENNETT

Independent

Hayle Town Council

Penwith District Council



***Your representative for Hayle South Ward***

Congratulation to Marjorie Roberts and her **Hayle in Bloom** team for winning Gold for the second year running in the South West in Bloom competition. Well done, too, to Mike Webb and the Hayle gardeners, PDC and the dozens of volunteers. See pictures and video at [www.hayleinbloom.org.uk](http://www.hayleinbloom.org.uk).

For the latest news on Hayle issues, take a look at my web site.

Telephone: 01736-753184

Email: [john.bennett@penwith.gov.uk](mailto:john.bennett@penwith.gov.uk)

Web site: [www.hayle.eu](http://www.hayle.eu)

7. Serbia      15. Bangladesh  
 8. Portugal  
 The winner was: Mrs J. Humphries of Launceston, and the lucky dip was won by: D. Kinmont of Hayle

**Computer / Laptop Problems?**

I can restore your computer or laptop to full working order for a fantastic price.

**NO FIX, NO FEE.**

Call today for a FREE, no obligation quotation.

**Call TeeCeeTech TODAY 07730 283433**

\*\*\*\*\*  
 A tourist, dining at Crewe,  
 Found quite a large mouse in his stew,  
 Said the waiter, 'Don't shout,  
 And wave it about,  
 Or the rest will be wanting one, too!  
 \*\*\*\*\*

**Hayle Library**

To all our customers, there are changes on the way; during the New Year we will be having self service machines installed at our Library which will free staff to spend more time showing the customers how to use the machines. The self service machines have been installed in Looe and Helston Library and are proving a great success.

Rosemary is offering computer tuition one on one, charges are £2.50 an hour, please contact the library if you are interested. All library member get the first half free on our computers you are then charged £2.00 an hour. Children are free.

Storytime is every Wednesday at 3.45pm - children bring your par-

ent/carers. Membership is free, all you need if would like to join is proof of your name and address.

Bus passes; if you have a pass which is a dual card library/bus pass you will need to come in for a separate library card.

Hayle Library and Hayle in Bloom have been working in partnership with the Hayle Youth Project, the probation service and the local PDC gardeners to create a Wildlife/Butterfly Garden at the rear of the building. The work has now started and if you wish to see our plans they will be displayed during the month of October.

Look forward to seeing you  
**Hayle Library Staff**

**Yoga**

beginner's classes

Tuesdays 9.30-11am

Passmore Edwards Institute

£4.50 per class

Tel: 01736 366388

**West Cornwall Cancer  
 Friendship Group**

**We are a support group for people with cancer. If you are sitting at home and would like a day out, or you want your carer to have a break, why not join us?**

We meet every Wednesday in the Philip Smith Annexe of the Hayle Day Centre from 10am - 3pm. Lunch is provided at a small cost.

For further information please phone Joy 01736 754349

**West Cornwall Cancer  
Friendship Group**

**Sat. October 20**

**Autumn Sale**

**plants, books, bric-a-brac, raffle  
and refreshments.**

**Hayle Day Care Centre**

**10am - Noon**

## **Go Green with the Green Bus!**

There is a splendid alternative to driving to the Marsh Lane Retail Park. The green buses, Nos. 340 & 341 drive right there – no hassle with traffic and no worries about parking. For instance, the 341 is at Foundry Square at 10.58, Copperhouse P.O. at 11.02 and gets to M & S etc. at 11.10. There are return buses at 12.10, 13.37 & 16.10. There are more, full details are in the free bus time-tables available at Hayle Library. Use it or lose it!

\*\*\*\*\*

A man ordered breakfast in a hotel.

"I want two eggs, one of them runny as water and the other cooked hard enough to bounce. I want the toast burned black, the coffee cold and the butter too hard to spread.

"We can't do that, sir", protested the waitress.

"Sure you can", said the man. "You did it perfectly well yesterday".

\*\*\*\*\*

## **Re-cycling**

The re-cycling facility has relocated from behind Central Garage to larger premises on North Quay.

# **PHILP'S**

**FAMOUS PASTIES**

**EST**



**1958**

**\*BAKING 7 DAYS A WEEK\*  
FOR THE GREAT TASTE OF  
CORNWALL'S  
PREMIER PASTY MAKERS**

**WITH OVER 40 YEARS  
EXPERIENCE**

**VISIT US NOW**

**AT OUR SHOPS AT-**



**1, EAST QUAY,  
HAYLE**

**01736 - 755661**



**1, FOUNDRY HILL,  
HAYLE**

**01736 - 753302**



**MARKET PLACE,  
MARAZION**

**01736 - 710332**



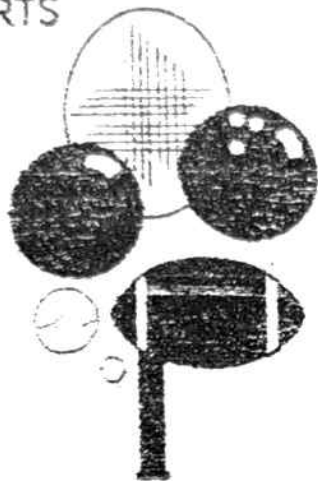
**THE SQUARE,  
PRAZE & BEEBLE**

**01209 - 831360**

# ANGOVE SPORTS

COPPERHOUSE, HAYLE  
01736 - 752238

FOR ALL SPORTS  
EQUIPMENT  
CLOTHING &  
FISHING  
TACKLE  
\*  
RACKETS  
REPAIRED  
& RESTRUNG



## PRAZE HAYLE MALE CHOIR

### The PHMC Roadshow

Following a busy summer schedule when our broad repertoire has been aired in a variety of venues inside and out, we are inviting you to hear us in rehearsal at a Village Hall near you. Once each month over the autumn and winter months we are planning to move our Tuesday evening choir practice to other venues. These will be open to all, male and female of all ages, free of charge. See 'Forthcoming Events' below for the first two of these. Our aim is two-fold: letting you see first-hand how we build our music-making skills (and how much we enjoy the experience); and en-

couraging any men who may have wondered about singing in a choir to give it a go. The serious note is that Male Choirs are ageing and their future depends on a new generation joining us.

### Recent events/concerts

The choir took part in the Hayle Civic Service at St Elwyn's Church on **Sunday 29 July** and in the evening were well received at a concert in St Bartholomew's, Porthleven which included items by contralto soloist Angela Thomas and the Praze Hayle Quartet.

On **9 August** the choir helped the restoration fund at St Elwyn's with a concert which included contralto soloist, Joan Parton.

The annual barbeque for choir funds took place at The Blue Anchor on **11 August** with its usual combination of formal and informal contributions from the choir.

On **August Bank Holiday Sunday** we were again at Porthleven, this time for the Annual Carolaire with Porthleven Town Band and comperes Tommy Bray and Angela Thomas. The choir were at the Porthminster Hotel on **7 August** and **4 September** for the last two of four Summer Concerts for their sponsors. We look forward to next season and thank the Porthminster for their continuing support.

Finally, after previous postponements due to weather and other reasons, we shared with the Hayle Samba Band, the celebrations for the successful restoration of the Millpond project on **Sunday September 16**. Compere, Cllr. John Pollard was

made an Hon Vice President of the choir during the event.

### Forthcoming events

#### **Tuesday 16 October**

Nancegollan Village Hall  
7.30pm } open choir

#### **Tuesday 13 November**

St Erth Church Hall  
7.30pm } practices

#### **Saturday 17 November**

Camborne Festival  
(evening)

### Membership and Choir Contacts

The requirements are to have a male voice, an ability and desire to sing with others. Previous experience in male voice choirs and reading music, whilst welcomed, are not essential.

Contact Roger Evans, Secretary, ☎  
01736 754681 or

John Barraclough, Asst Secretary, ☎  
01209 831879 for more details.

**John Barraclough**

## CORMELIAN'S BIRTHDAY

Cormelian, The Little Shop of Treasures, selling books, maps and other exciting collectables in Pratt's Market is 2 years old at the beginning of November.

The shop will be having a make-over to celebrate and we would like to take this opportunity to say a big "Thank you" to all our customers, past, present and hopefully future. So watch this space and as they say, see you on the other side!  
Cormelian, Pratt's Market, Chapel Terrace, Hayle.

Tel.: 01736 755890

Mob.: 07974 000747



## Copperhouse Jewellers

*Jewellery & Repairs  
Watches, Straps &  
Batteries Fitted  
Gifts, China & Crystal  
Trophys & Engraving*

01736 753203



## ALAN ORCHARD & SONS

APPRENTICESHIP SERVED



PROFESSIONAL TRADESMEN

CARPENTRY & JOINERY  
UPVC FASCIAS  
ROOFING, BUILDING,  
DECKING  
KITCHEN FITTING

01736 756687

07787 148571

27 GUILDFORD ROAD  
HAYLE TR27 4PP

# Des Button

Springfield  
33 Clifton Terrace  
HAYLE TR27 4BP

01736 753211  
0778 868 2076

ELECTRICAL  
SERVICES &  
SUPPLIES

Part P  
Registered



## HAYLE CRAFT & FLEA MARKET

This season has proved very successful for the popular Hayle Craft and Flea Market held regularly on Fridays at Phillack Church Hall.

Collectors, crafters and bargain hunters have been catered for with our selection of interesting books, maps, jewellery old and new, photographs and prints, china and collectables and lots more.

Home-made jams, marmalades and chutneys, filled rolls and bacon or sausage "butties" have been tickling people's taste buds and fresh vegetables, fruit, flowers and free range eggs have also been selling well.

If you haven't been to see us yet,

there is still time before we close for the winter.

October 5, 12, 19, 26

November 2 & 30

December 7

The market is open on Friday 10am – 4pm

For further information please contact Gill & Graham at 'Cornelian' Pratt's Market, Chapel Terrace, Hayle 01736 755890 or 07974 000747

## SINGER & PFAFF SEWING CENTRE

Authorised Singer Service Centre for Cornwall

*All makes serviced*

11 ST. JOHN STREET, TRURO

01872 225168

Mr & Mrs D.M. Girling

## Zimbabwe Appeal

I wish to thank all those generous people who responded to my appeal in the last issue of the Pump for clothing to help the workers in Zimbabwe. I found out that the best way was to make up small parcels of 2kg each, and send one at a time – mind you it is surprising how much you can cram into a small packet weighing this amount. If a huge quantity arrived at once it might look as though my brother was running an import business, and the officials may well confiscate it. Anyway, the first parcels are on their way, with many more to follow, so please for the moment don't drop off any more at my house as I am running out of space! With grateful thanks,

Jeff Turk 01736 752319



# Council Corner

## FIRE SERVICE

Hayle Town Council remains extremely concerned about fire provision for Hayle and for Cornwall.

Having studied the response statistics for the fire service, and noting that Cornwall has the second worst response times in the country, the Council has expressed outrage at the current plans to make further cuts. The recent tragedy in Newquay has alerted everyone to the dire situation of Cornwall's fire service. The hard-working firefighters are having to cover for as many as 100 unfilled vacancies and the current threat to remove 24-hour manned coverage at Camborne would leave our response times in Hayle for night fires, which are the most dead-

ly, even worse than they are now. Hayle Town Council is strongly urging town residents to write to:

Cllr K Yeo  
Public Safety Portfolio Holder  
Cornwall County Council  
County Hall  
Truro, TR1 3AY  
kyeo@cornwall.gov.uk

– and –

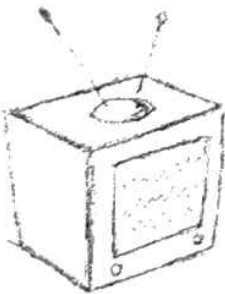
Mr M Littmoden  
Chief Fire Officer  
Cornwall Fire Brigade  
Old County Hall  
Truro, TR1 3AY  
enquiries@fire.cornwall.gov.uk

Express your concern at the current state of the fire service and to oppose any further cuts until a full report is issued on the Newquay hotel fire. (It would be helpful if you would copy your letters to the Town Clerk.)



## Problems setting up your DVD - TV - Video - Digibox?

*We offer a set-up service!*



**SALE OF SECOND-HAND TV'S  
FROM £49.99**



**MURTS TELEVISION  
32 Penpol Terrace, Hayle  
Repairs / Sales / Rentals  
01736-752269**



# BARTON print

Tel: 07799 411525  
Fax: 01736 757022

## Quick Reliable General Printing Service

JUST A SMALL SELECTION OF THE SERVICES WE OFFER!

- BUSINESS CARDS
- COMPLIMENT SLIPS
- NCR PADS / SETS
- LEAFLETS
- MENU'S
- NEWSLETTERS
- ENVELOPES
- LARGE FORMAT PRINTS
- LETTERHEADS
- OVERPRINTING

### ● B/W COLOUR COPYING

COMPETITIVELY PRICED

1 Turnpike Road, Connor Downs

Telephone 07799 411525 01736 754220

## HAYLE IN BLOOM

The Council send its congratulations to Hayle in Bloom, led by former mayor Marjorie Roberts, for winning Gold in the SWTA Cup, and a Merit Award in the Neighbourhoods category, for the Millpond. Well done to all of the volunteers and Hayle's professional gardeners and to PDC for its marvellous support.

## CCTV UPDATE

After a lengthy consultation process, multiple meetings and a great deal of debate, the Council voted to support the refurbishment of the CCTV system. This will cost the average council tax payer in Hayle £1.54 per year and will continue for at least six years. St. Ives has also agreed to support the upgrade, and Penzance is due to vote on it on 1<sup>st</sup> October. If Penzance Town Council agrees to support it then the CCTV system will stay; otherwise it will be decommissioned.

## FOOTPATHS

Please continue to send in information on any footpaths that are closed, obstructed or do not appear on the 'definitive map' (copy in the Clerk's office). We have formed a working group to try to resolve as many of these issues as possible but we need your input.

## COMMUNITY CENTRE

A reminder that the Community Centre on Queensway has rooms available for hire. Please contact the Clerk for details.

For further information on local issues please look at our website:

[www.hayletowncouncil.net](http://www.hayletowncouncil.net)

Hayle Town Council  
13-15, Hayle Terrace  
Hayle TR27 4BU  
01737-753184

Eleanor Giggall, Town Clerk

## THE ROTARY CLUB OF HAYLE

**Over the busy summer we have been successful with our fundraising events.** The Classic Car Show was well supported by local charities and businesses and the presence of the new shopping outlet probably increased our attendance by the public. We are grateful to Calloose Holiday Park for allowing us to hold barbecues there. It is also an opportunity to meet visitors to Cornwall and tell them about the work of the Rotary organisation.

Finally we had an 'Evening in a Barn' with food and entertainment which began our fund for a water project in Uganda.

We shall shortly be donating a blood pressure monitor to our community nurses and already have

given money to Flood Relief in UK, Hayle RFC and St Johns Ambulance. Our Youth opportunities Officer Peter Dawkins has informed local schools about this year's design challenge, 'Design a Coat of Arms for your school', and the 'Youth Speaks' public speaking competition will begin with a local round in January.

If you want to know more about the work of the Rotary organisation contact me on 01736 741348.

*David Jones*

Hayle Friendship Group  
for children's hospice  
SOUTH WEST

On a beautiful sunny Sunday afternoon on August 26 I went along to Goldstephen Plant Nursery. The owner, Sally Martel had

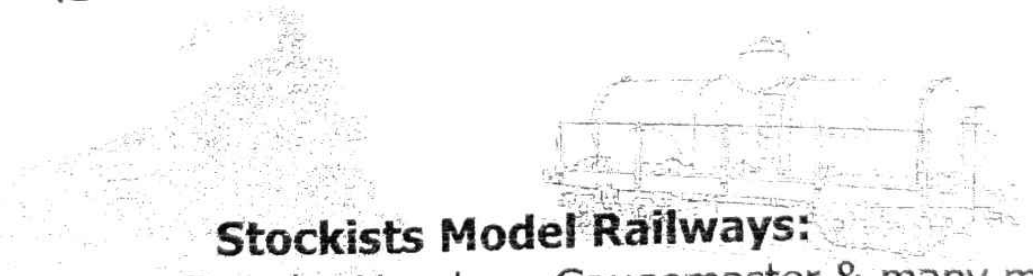
opened her lovely garden and was serving scrumptious cream teas to over 90 visitors. The gardens were looking magnificent in the sunshine, there were places to stroll around, places to relax and soft music playing. There was also a raffle, CHSW goods were on sale, and Sally donated a percentage of the plant sales that were made on the day. All together, over £600 was raised for the hospice.

The nursery is situated at Pilgrim's Way, Fraddam on the Country Skittles Road to Townshend and has a huge range of plants for sale. It is well worth a visit.

*Sarah Turk.*

children's hospice south west.  
Little Bridge House, Redlands Road  
Fremington, Barnstaple EX31 2PZ

## **GREAT WESTERN SCALE MODELS**



### **Stockists Model Railways:**

Bachmann – Dapol – Hornby – Gaugemaster & many more

**Plastic Kits:** Airfix – Revell – Dragon

Italeri – Heller – Trumpter

**Scenics for Model Railways – War Games**

Accessories – Boats – Dolls Houses – Model Aircraft (balsa)

Fly Slot Cars & Accessories

**\*\*\* ORDER NOW FOR CHRISTMAS \*\*\***

**01736-757679**

# DO IT FOR YOU

**For ALL your  
gardening  
needs!**



Autumn and winter are coming. **NOW** is the time to start thinking about cutting back and clearing away. This is the best time of year for those tidying jobs you've been putting off.

**Let us DO IT FOR YOU.**

Call Martin  
01736-757185  
07866-446151

## MEMORIES OF HAYLE RUGBY CLUB - PART 1

My name is Ron Baumbach and I am a member of the Rugby Sages Club, a group of retired past rugby players and committee members from all the clubs in Cornwall. We meet at 2pm on the first Thursday of every month at either Redruth, Hayle, St. Ives, Pen-

zance, Falmouth, Penryn, Camborne or Truro. We chat about the old days and present times and how things have changed in Cornish Rugby. We have a few jars of beer and a pasty and always finish off the afternoon with a sing song.

Our Hayle group is very grateful to Hayle Rugby Club who supply transport for us and Paul Hurrell and Terry Mungles who make sure we get in and out of the bus safely. If there are any ex players or committee members who have not been to one of our afternoons you will be made most welcome.

At a recent meeting at Penryn we were discussing the differences in the way we used to perform and run our clubs compared to the present day. Amongst other things we were talking about the fact that the majority of players now get paid for playing and rumours that grounds such as Hayle have been or may be sold for development. I would remind the present Hayle Committee that when we bought the ground it was named Memorial Park in memory of all those Hayle Rugby Club players who lost their lives in the two world wars.

A Truro member informed me that they used to pay most of their players at great cost to the club. There came a time when the club could not afford it



### W. J. WINN

FUNERAL & CREMATION DIRECTORS  
PRIVATE CHAPELS OF REST  
24 HOUR SERVICE



69, FORE STREET  
HAYLE  
01736 752124

&

TRENWITH TCE  
ST. IVES  
01736 793029

so the committee decided that all payments would cease. The bulk of players immediately left to join other clubs in Cornwall who could afford to pay what they were asking. Some were paid £150 plus per week so loyalty to Truro went by the board. I told my friend from Truro that when I was secretary of the Hayle club for much of the time we did not have £150 in our accounts.

I started playing for Hayle just after I left school. When I got into the first team, with my great mate Charlie Penrose, I was seventeen. We played our first game for the seniors as prop forwards. We were both about fifteen stone in those days.

It was 1937 and after two seasons the war broke out and all club rugby was suspended. During the war we played friendlies against Redruth

Home Guard, Camborne, Penzance and some services sides who were stationed in the area. Just before the war we had a very young side with a few older players to help and guide us. The outstanding players of the time would have been Vernon Thomas, Charlie Williams, Charlie Baumbach, Donald Gilbert, Douglas Baumbach, Henry Pryor, Di Trewartha, Bailey Hosken, John Runnalls, Arthur Stevens and E. Glanville. Vernon and Charlie Williams were sadly, both killed in the war.

We played in a field at Bar View Farm kindly lent to us, at no charge, by Mr. Richards the farmer who owned the farm. We had a little wooden grandstand with two rooms at the back where we assembled when we arrived at the ground. The visiting team changed in a barn at the back of the

# J C ELECTRICAL

Your complete 24hr Electrical Service

City & Guilds Qualified  
Tests to 16th Edition BS7671

Rewires, New Build, Lighting, Extra Sockets,  
Showers, Heating

Prompt Reliable Service  
All Work Guaranteed

Free Estimates  
Part P' Registered

Hayle 01736 754543  
Mobile 07739 577 549

**EIC**  
DOMESTIC  
INSTALLER 

**DO YOU NEED  
A REGULAR  
WINDOW  
CLEANER?**



***David Morris Window  
Cleaning***

***We are already well established  
in your area ( 8 years)***

***High reach cleaning system.***

***Phone Dave for a free  
quote on  
01736 756394***

now Copperhouse Inn which was then called 'The Commercial'. We had no showers in those days and washed in tin baths prepared by one of the Hayle committee men. The Hayle team changed in their own homes and if there was anyone in the team from outside the town we took it in turns to take them home as well.

At one period we had three from my household, my brother Douglas, my brother in law Henry Pryor and myself. My dear old mum would get the hot water ready for us in the back kitchen in two tin baths and after we had bathed, God bless her, she would wash all our gear and get our tea. I can't see many people doing that today. What a difference now, and a good job too, with the lovely changing rooms and showers and the bar afterwards for a drink. If we wanted a drink we would go down the pub in the evening and play the game all over again.

In mid-week we would train at Bar View on Tuesday and Thursday evenings. There

were no floodlights so we would paint one of our well used balls white and rely on the moonlight. If it was very muddy we would wash off in the cows drinking trough. Our secretary in those days was a lovely old gentleman Walter Barnes, a retired postman. The chairman was Fred Hollow, the builder who built Hollows terrace. These two gentlemen, with their committee, worked very hard to keep the club going. Not many people had cars in those days, so if we travelled by train to away matches, we would have either our tea money, a shilling (5p), or our train fare. They could not afford to give us both. We did not mind as we played for Hayle and for the love of the game. We thought it was an honour to play for our town team.

We were not a bad side and held our own with most of the local clubs. Redruth and Camborne were the top clubs then. They would more often than not give us a real whacking. Vernon Thomas was a second row forward who, in the opinion of all of the experts of that period, would have gone on to play for England, had it not been for the war. Sadly that was not to be but his brilliant performances for Hayle, Cornwall, the Combined Counties and the Combined Services are still remembered by those of us who knew him. The war also claimed the life of our excellent full back, Charlie Williams and Bertram Mills, a black player, who showed a lot of promise. Two days before we got news that Vernon had been killed in action I had received a letter from him in which he said that when he returned home between us we would re-launch the club and put Hayle Rugby back on the map. (To be continued in next issue)

***Ron Baumbach***

\*\*\*\*\*

Did you, or someone you know, lose a gold earring in Copperhouse last April? It is still unclaimed.

Phone Sarah at 01736 752319

\*\*\*\*\*

All Aerials...26	Footsteps...20*	O'Dell's Signs...21
Angove Sports...30*	Foundry Interiors...7	Orchard, Alan...31
Barton Print...34	Franklin, P.G...23	Passmore Edwards...3
Bennett, John...27	Grameen Tandoori...5	Penpol Garage...17
Bigglestons...40*	Great Western Models...35	Pet Portraits...8
Biz & Bytes...11	Guitar Tuition...7	Philp's Pasties...29
Button, Des...32	Hayes, Roy...8	Planet Showrooms...22
Café 1...7*	Hayle Cycles...4	Plantech...15
Calmtime (music tutor)...12	Hayle Holistic Clinic...39*	Rosewarne Manor...9
Cliffords Plumbing...12	Hayle Recovery...16	Singer & Pfaff...32
Colin's M'ket Garden...18*	Hendra, Malcolm...13	SkinLife...17
Copperhouse Jeweller...31	H.O.S.C....12	Stand Easy (feet)...19
Cornwall Chiropractic...10	J C Electrical...37	Suites & Sofas...40
Cornwall Rock...23	Jewellery Workshop...19	TeeCeeTech...28
Cornwall Soapbox...18	Jolly Bodger...11*	The Painter 15
Country Skittles...25	Keast, F L...6*	Wade, Neil...24
Cranford House...14	Kris Gayle...26	Window Cleaner...38
Do It For You (gardens)...36	Lello, Terry...27	Winn, W J...36
Farm Shop...4*	Murt's Television...33*	Yoga...28
Fernleigh...11	N.G.S.Clock Repairs...5	

You can pick up a copy of the Pump at those advertisers marked with an \* also at Hayle Library, Day Care Centre, Community Centre, Bodriggy Health Centre, Copperhouse P.O., Forbuoys, St. Erth P.O., Connor Downs P.O. and many other places in Hayle.



## Hayle Holistic Beauty Clinic

77, Mellanear Close, Hayle.

01736 755656

New Treatments \* Ear candling \* Hot stone Massage

All beauty treatments (Face & Body) by award winning therapist, RAMA  
 Electrolysis, Ear piercing  
 Specialised cosmetic treatment (Collagen, Thread Vein treatments)  
 Gift Vouchers . Free Consultation.  
 Special rates for senior citizens & school children.

# BIGGLESTONS

TRADING IN HAYLE FOR OVER 100 YEARS

Please try us first for the best of Hardware,  
Ironmongery, Kitchenware, Paraffin  
and Garden Supplies.

01736 752219

*Summer, Autumn, Winter, Spring  
We can supply 'most everything*

## **SUITES & SOFAS WAREHOUSE**

Unit M, St. Erth Industrial Estate, Hayle, TR27 6LP

**LARGE SELECTION OF LEATHER  
AND FABRICS TO ORDER**

*ALSO FROM STOCK, ENDS, ONLINES,  
ETC. AT CLEARANCE PRICES*

For details of our current  
offers phone

**01736 759586**

**07779 760686**

or visit our warehouse daily

between 11am-4pm WHEN WE ARE OPEN TO VIEW

