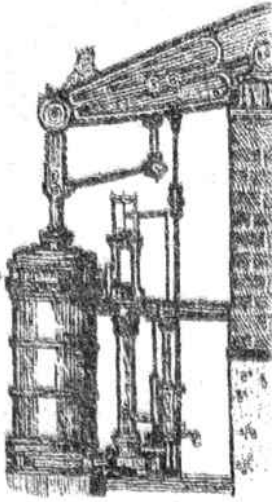


ISSUE 81

April/ May

2008



# HAYLE PUMP NEWSLETTER

**Circulation 2500 FREE copy, please take one. Made possible thanks to our advertisers.**



**Winners! The Cornish Junior Kayak  
Team**



## *Kayak Kids Need Help to Keep Afloat*

At the Inter Celtic Watersports Festival in Brittany last year the Cornish Junior Kayak Team came first overall, and also first in the Polo competition.

An outstanding result, and now they are in training to do the same in Spain this year. Hopefully they can, if companies are willing to sponsor them. They are at present working hard to raise funds themselves by completing a gruelling sponsored paddle from Penzance Harbour to Fowey River Canoe Club in Golant in a single weekend.

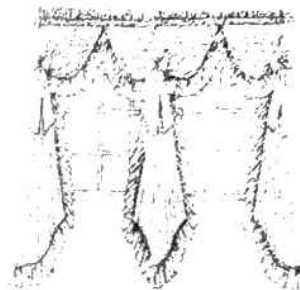
They are currently planning numerous other activities such as a raffle/auction with prizes donated by local businesses, family and friends. They are training in Penzance Harbour with coach Ray Helmer on Tuesdays and Fridays 6pm – 8pm at present and every second Saturday of the month they have a pool session at Penzance Leisure Centre 7pm – 8.30pm. If you are interested in sponsoring the team please pop along for a chat and meet the team who would wear the sponsor's logo with pride when playing home or abroad.

This young junior team is currently in the Cornish league, travelling to Street in Somerset to compete in the South West Polo League, as well as playing local teams such as Culdrose and Redruth.

Please, please help the team raise the funds and sponsors that are so desperately needed to enable them

## **HOOKED ON CURTAINS**

*The Curtain Store at Your Door  
for Made-to-Measure  
Curtains & Blinds*



Choose in your own home from over 1,000 fabrics & a variety of heading styles. Free, no-obligation quotation & measuring service for curtains, vertical, Roman, Venetian & roller blinds.

Phone Gill Wright on  
**01736-796657** or **07725-814144**.

to compete at this level.

Anyone interested please contact the team secretary Emma Pearce tel: 07973 265 030

Email [empearce@msm.com](mailto:empearce@msm.com)

**Let's stand by this team and be proud to be Cornish.**

**Ben Stevens 01736 757491**



## **Council Corner**

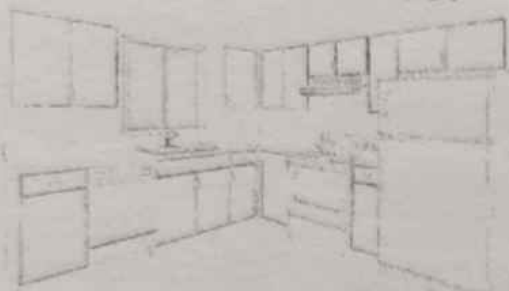
**Consultations** There have been a number of important consultations in the last couple of months including the Fire Brigade Integrated Risk Management Plan Consultation 2008-2011, the Local Development Framework (LDF) Core Strategy and

## FOUNDRY INTERIORS

*Kitchens & Flooring*

Tel: 01736-755095

Mobile: 07894-814787



- ▶ Why not give your old kitchen a facelift?
- ▶ Huge range of doors, worktops & appliances professionally fitted
- ▶ Complete kitchens also supplied custom-built with rigid 18mm colour-coordinated cabinets
- ▶ Laminate flooring a speciality
- ▶ For friendly, personal service, call Andrew on either number



## KERNOW ELECTRICAL SUPPLIES LTD

8 Hayle Terrace\*

TR27 4BS

01736 758491

OPENING HOURS:

MON-FRI 8 TILL 5

SAT 9 TILL 1 - SUN 10 TILL 2

For all your electrical needs.

Trade and public welcome.

We sell everything from Hoover belts/bags to cable, lighting, lamps and tubes, batteries and computer accessories - plus a large range of low-energy lamps.

*\*Former location of Roy Hayes Glass.*

the Hayle Area Action Plan (HAAP).

The council was unimpressed by the Fire Brigade IRMP since it did not deal with response times to fires and seemed more concerned with finding ways of cutting costs.

The LDF is an important part of land-use planning and sets the strategies and policies for the period 2006-2026. In its formal response to the Core Strategy, the council was particularly concerned with the allocation of between 3,250 and 3,900 new dwellings to Hayle out of a total of 7,500 for Penwith. Not only is the Penwith allocation far too high, Hayle's share is unacceptable. We have around 3,000 dwellings in Hayle now and these plans would cause us to more than double in size during the plan period.

The HAAP caused a stir in the community because of the proposal to allocate a site on Water Lane for a Gypsy and Traveller transit camp. Although this part of Water Lane is in Gwinear/Gwithian parish, Hayle Town Council's response made it clear that the three potential sites were unsuitable due to their proximity to the settled community. The council resolved to:

- a) *inform Penwith District Council that the sites identified in the Hayle Area Action Plan (HAAP) for gypsies and travellers are unsatisfactory and the Council has been unable to find alternatives within the HAAP boundary and considers that it should encompass a broader area and*
- b) *request that the issue of sites for gypsies and travellers be considered separately from the HAAP process and that, when it is*

debated, all those involved in the process, including the relevant officers from Cornwall County Council and other informed groups and persons, should be involved and to point out that flowing from this process this Council will expect firm evidence to emerge in support of the allocations in Hayle.

These points were also made in the council's response to the HAAP. You can read the full response to all 104 questions by contacting the Town Clerk.

### **Council Move to Carew House**

After receiving a report on the costs and benefits of moving the council's offices and meetings from the Passmore Edwards Institute to Carew House, the council voted unanimously to move 'at the earliest convenience'. Councillors who were also trustees of the institute withdrew during the debate and vote. The current target for the move is around the end of May - keep an eye on our noticeboards. The new offices are accessible to disabled visitors and provide additional space for services that may be devolved as part of the Unitary Council reorganisation.

### **Hawkins Motors Site**

The issue of the old Hawkins Motors site on Hayle Terrace has dragged on now for almost six years. The council resolved last year: *to support the construction of 5 market value houses maximum on the existing footprint subject to the open space being vested to Hayle Town Council prior to building, the open space is landscaped, the wave wall continued along the entire length of*

## **Luxury Sliding Door Wardrobes**

at AFFORDABLE prices!

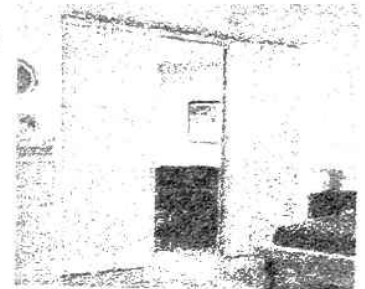
For a Full colour brochure and price list

Call SpaceMaster Locally

01326 377 620

Many styles made  
to measure for  
**YOU!**

Any room  
Any shape  
Any size!



*the site and all of the houses provide off street parking.* Penwith District Council officers produced a design brief for 6 market and 6 affordable dwellings on the site covering much more than the current footprint and this plan was brought before the PDC planning committee on the 11th of March. Despite strong representations from town and district councillor John Bennett, town councillor Jayne Nines (officially representing Hayle Town Council) and planning committee member Duncan Cook, the planning committee voted to accept the 'planning brief' as the basis for a three-week consultation. Some progress was made in that PDC planning officers recognised that the Section 106 agreement calling for the construction of 'a minimum of 26

**Suppliers of High  
Quality Rimless  
Spectacles  
with Two Year  
Anti-breakage  
Warranty**

**Tough,  
lightweight and  
from  
only £165  
complete.**

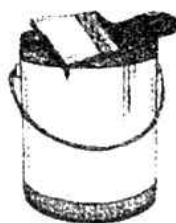
**KEAST OPTICIANS  
18 Commercial Road  
HAYLE  
TR27 4DE  
Tel: 01736 753145**

**21 Alverton Street  
PENZANCE  
TR18 2QP  
01736 366105**

affordable houses' on the site was unworkable and in violation of the Council's own policies. Please let the Town Clerk or PDC know your views.

You may contact the council via the Town Clerk's Office at the address and numbers below. To contact your councillor, please get the details from the Town Clerk, the council's web site or from the notice boards at Copperhouse, Foundry and Angarrack.

**Eleanor Giggall, Town Clerk,  
Hayle Town Council  
13-15 Hayle Terrace, Hayle,  
TR27 4BU,  
Tel/Fax: 01736 755005, Email:  
townclerk@hayletowncouncil.net  
Web site:  
www.hayletowncouncil.net**



**David N'jie**  
Painter & Decorator

10 Chenballs Close  
St Erth, Hayle  
Cornwall . TR27 6HY

(mobile) 07944156995  
(home) 01736 756288

### *Foundry Furniture Shop*

We are brand new to Pratts Market, opening our Foundry Furniture Shop in the last week of February 2008.

Our varied stock covers a broad range of old and new styles of furniture from Victorian fire-places to old pine bedsteads, from tables and chairs to mirrors, rugs, prints, lamps,

wine-racks, candle holders and much much more.

With an eclectic mix of one-off pieces the stock should be constantly changing, keeping us busy and customers interested and happy!

Whether you want to furnish a conservatory or browse for a birthday or house-warming gift we hope you will find something here to your taste.

We are open Monday to Saturday 10am – 4pm and look forward to seeing you soon.

*Shelley*

## **Pratt's Market**

A unit may be available shortly at a reasonable rent. Please contact Andrew in BK Video at the rear of the market or phone him on 01736 755227.

### *Encyclopaedia Britannica*

Would anyone like a set?

Free, or a small donation of £2 to the Precious Lives appeal if you like.  
Ring Jeff 01736 752319

## **The Farm Shop**

**31 Penpol Terrace**

**Hayle**

**Open 6 days a week**

**8am - 5pm**

**For all your local produce,  
fruit, vegetables, plants &  
flowers, free range eggs.  
Cornish potatoes.**

**Now in:**

**Bedding plants,  
Local new potatoes  
Strawberries**

The Hayle Pump Newsletter would like to offer their sincere condolences to Bruce and Rosalind of "The Farm Shop" on the tragic death of their son in a road accident.

## **HAYLE TENNIS CLUB OPEN DAY**

### **Play Tennis**

**on Sunday 4 May 10am—5pm**

**At Tremeadow Terrace, Hayle**

**Free Refreshments**

**ALL AGES WELCOME, COME ALONG AND HAVE FUN!**

|   |       |
|---|-------|
| R   | ROY   |
| H   | HAYES |
| G   | GLASS |
| Unit 2, Prykernow<br>Penpol Avenue<br>Hayle TR27 4NQ<br><br>- Good parking -<br><br><b>Tel/Fax: 01736-754023</b><br><b>Mobile: 07880-530795</b> |       |

## POINTS TO PONDER FROM CORNWALL ADVANCED MOTORISTS

Today and every day nine people will die in road traffic accidents and ninety plus will be seriously injured. Six of these nine will die on rural roads. Drivers under the age of twenty-five are most at risk and half their crashes happen at night. 75% of all fatal vehicle crashes involve men and 95% of all motorcycle deaths are male.

**Depressing statistics.** Single carriageway rural roads claim 80% of all rural road deaths and serious injuries. The safest roads are motorways with only 7% of all road casualties. There is not a single motorway in Cornwall but an awful lot of

rural roads with Cornish hedges, trees and ditches.

**FACT:** Statistics show that Advanced Motorists are 70% less likely to cause crashes than other drivers/riders.

The Institute of Advanced Motorists (IAM) is a charity which is devoted to improving driving skills and reducing casualties. It costs the country over one million pounds for every death on the road. The cost in terms of human suffering is incalculable.

The cost of improving your safety and that of those you love is currently £85, if you are 26 and over, and only £65 if you are 25 and under. That cost covers all the driver coaching, the printed material to help you pass the Advanced test, the test fee, and includes a year's full membership of the IAM and also a year's membership of Cornwall Advanced Motorists. This 'Skill For Life' package is probably the best value safety aid in the country today. There are of course other benefits: a reduction in fuel consumption, less wear and tear on tyres- and your vehicle generally- which makes a significant contribution to improving your carbon footprint. Some gain significant savings on motor insurance. In Cornwall we run special driving events and activities in conjunction with local dealers to which you will have access. In addition, your confidence and skill, be it in a car or on a motorbike, will be greatly increased and your driving enjoyment taken to a new level.

If you are interested in learning how to develop the skills needed to

be an advanced driver on today's roads then contact us. Please telephone Diana Smeath on 01872 242352 and quote HP208.



**KIND OF  
CORNISH**



Unfortunately we have lost our usual retail supplier of review copies for this long-running column. In these IT days, however, more and more music sales are made over the internet, or otherwise directly to the public on gigs. We would like to invite any artists or musical groups in the area who have CDs for sale to submit them for review in the Hayle Pump. Over the years this column has reviewed all

types of music; bands, choirs, classical, jazz, folk, rock, pop, and also spoken word albums. To qualify for a review you either have to be Cornish, Cornish-based or have some Cornish connection. Contact details for Pump readers wishing to buy your CD must be stated, preferably a website, or failing that, at least a telephone number, and the price must be quoted. As with our written articles, we reserve the right to refuse items of an offensive or otherwise unsuitable nature.

The CDs should be sent or delivered to the Hayle Pump office in Pratt's Market, so let's be having them!

**Goudie Charles**

**haylepump@btinternet.com**

# J C ELECTRICAL

Your complete 24hr Electrical Service

City & Guilds Qualified  
Tests to 16th Edition BS7671

Rewires, New Build, Lighting, Extra Sockets,  
Showers, Heating

Prompt Reliable Service  
All Work Guaranteed

Free Estimates  
Part P' Registered

**Hayle 01736 754543**  
**Mobile 07739 577 549**

**EEI**  
**DOMESTIC  
INSTALLER** 

# CORNWALL AIR AMBULANCE

Celebrating 21 Years of the Corn-  
wall Air Ambulance

Saturday, 3<sup>rd</sup> May 2008 at 7.30pm

The Rum Store, Carnglaze Cav-  
erns, Liskeard.

Tickets: £10 adults, £5 children,  
available on the door or from  
Carnglaze (01579 320251)

Musicians and singers from the Uni-  
versity of Southampton travel to  
Carnglaze to raise money for the  
Cornwall Air Ambulance. The eve-  
ning will include music from the  
Southampton University Wind Or-  
chestra (playing 'The Padstow Life-  
boat' by Malcolm Arnold and 'Pirates

of the Caribbean') as well as a short  
vocal set from the Southampton  
University Chamber Choir (perform-  
ing a selection from their wide-  
ranging repertoire). The second half  
will see around 80 performers com-  
bine to form the Charity Symphony  
Orchestra and Choir, who will take  
the audience on a whistle-stop tour  
of the British Isles through music.  
Their programme includes Handel's  
'Zadok the Priest', 'Rule Britannia',  
Walton's 'Crown Imperial' and  
Wood's 'Fantasia on British Sea  
Songs', culminating with 'Trelaw-  
ney', arranged by local composer  
Russel Pascoe.

The Charity Symphony Orchestra  
was set up in 2006 by former mem-  
bers of the University of Southamp-  
ton. It aims to give both ex and cur-  
rent students an opportunity to per-

# TJ's BARBERS

2 Market Square, Copperhouse, Hayle

Tel: 757000



|       |       |
|-------|-------|
| Gents | £7.50 |
| Boys  | £6.00 |
| OAP's | £5.50 |

*Ear piercing  
available*



**Opening Hours:**

**Tue-Fri 9am-5pm • Sat 9am-4pm**

**- NO APPOINTMENT REQUIRED -**

form great music, socialise and keep in contact with each other, as well as to raise money for charity. The orchestra usually rehearse on the weekend of the concert and have previously performed in London, Southampton and Bristol. The CSO will be conducted by Craig Lawton, who graduated from the University of Southampton this year and who has worked with the Southampton University Symphony Orchestra, the City of Southampton Orchestra and the Winchester Symphony Orchestra.

James Churchfield, presenter of the Breakfast Show on BBC Radio Cornwall, has kindly agreed to comper the concert.

There will also be a charity draw during the evening, the prizes for which have been donated by businesses and attractions in the South West.

The Cornwall Air Ambulance is funded solely by voluntary fund raising, donations and legacies by local people and members of the Air Care Lottery and with the support of local businesses. The Cornwall Air Ambulance Trust is the Charitable Trust which raises the funds to keep Cornwall's Air Ambulance airborne.

Costing around £1.5 million a year, the Cornwall Air Ambulance flies because of the generosity (in time and money) of the people of Cornwall and the Isles of Scilly.

**For more information please contact Sarah Heard on 07779 927613 or on [sarah9083@hotmail.com](mailto:sarah9083@hotmail.com)**

*How did Noah see to the animals in the Ark?*

*By flood-lighting*

## **Fernleigh BED & BREAKFAST**

En-suite, Colour TV,  
Coffee & Tea making  
Facilities in all rooms.

**NON SMOKING**

**26 COMMERCIAL ROAD  
HAYLE  
CORNWALL  
TR27 4DG**

**TEL: 01736 752166**

[mikelynreffold@fernleigh.fsbusiness.co.uk](mailto:mikelynreffold@fernleigh.fsbusiness.co.uk)

LYN & MIKE REFFOLD

## **NEW LIVE MUSIC VENUE FOR HAYLE**

In March the Foundry Bar, Foundry Square, put on the first of what it is hoped will be a series of monthly musical events, with the highly acclaimed guitar duo of Louis D'Agostino and Pete Oxley. This attracted a full house, and a follow-up event has been arranged for **Wednesday 9 April**. This time the featured group is Coração which features top guitarist Pete Kubryk Townsend, vocalist Imogen Reeves and bassist Mike Murphy in a programme of material drawn from some of the great Brazilian songwriters, as well as gems from the Great American Songbook. The band is joined by long time Brazilo-



Want to play music?  
You're never too old!

*I'm a coach, former session musician (guitar, bass, harmonica), and a Registered Guitar Tutor. With over 30 years' experience, I specialise in helping you learn in your own way, to read music or play by ear. I teach acoustic and electric guitar, bass guitar and blues harmonica.*

Learn music the fun way  
with Graham Smith.

Call me on 01736-740141

(based near Penzance)

graham@calmtime.com

www.calmtime.co.uk

# BARTON

# print

Tel: 07799 411525  
Fax: 01736 757022

Quick Reliable General  
Printing Service

JUST A SMALL SELECTION OF THE SERVICES WE OFFER!

- BUSINESS CARDS
- COMPLIMENT SLIPS
- NCR PADS / SETS
- LEAFLETS
- MENU'S
- NEWSLETTERS
- ENVELOPES
- LARGE FORMAT PRINTS
- LETTERHEADS
- OVERPRINTING

- RAFFLE TICKETS
- B/W COLOUR COPYING

COMPETITIVELY PRICED

1 Turnpike Road, Connor Downs

Telephone 07799 411525 01736 754220

phile Pete Turner on percussion.

And the following event on **Wednesday 4 June**, features a rare appearance by Hayle's own songstress Kris Gayle, who will be accompanied by the outstanding guitarist/vocalist John Knight.

Tickets for Foundry Bar musical events are £10, which includes the hot and cold buffet - the food alone is well worth the ticket price, so with music of this calibre it is advisable to book early! Doors open at 7.30pm, food is served from 8pm, and the music commences at 9pm.

Tickets from the Foundry Bar  
01736 753334 or RJF Audio Visual  
01209 710777.



## SMALL GRANT SCHEME FOR LOCAL GROUPS

*Do you have a project idea that will benefit your local community?*

*Is your group based in, or working in, the Town of Hayle, or parishes of Gwinear & Gwithian, and St Erth?*

*Will your project contribute to the vision and goals outlined in the Hayle Area Plan 2005-25?*

If you have answered YES to all these questions your group may be eligible to apply for a Hayle Area Plan Partnership Small Grant to help deliver the project.

Grants are available up to a maximum of £1,000 for projects that will help achieve progress towards the priority areas detailed in the Hayle Area Plan 2005-25.

For further information about the

grant, and the application process please contact Sally Newby or Delia Webb, Community Regeneration Team, Penwith District Council, St Clare, Penzance, TR18 3QW.

Telephone 01736 336736

E Mail

[delia-mary.webb@penwith.gov.uk](mailto:delia-mary.webb@penwith.gov.uk)

For further information about the Hayle Area Plan 2005-25

please visit

[www.hayleareaplan.org.uk](http://www.hayleareaplan.org.uk)

### **P G Franklin**

Chapel Hill, St Erth

General House Repairs • Property Maintenance

Garden Landscaping

**NO JOB TOO SMALL**

Telephone: 01736-757360

Mobile: 07778-739341

# COLIN'S MARKET GARDEN



THE SIGN OF  
FRESH  
FRUIT & VEG

find us at  
THE FRONT  
PRATT'S MARKET  
FOUNDRY SQUARE

JUST  
LOOK  
FOR THE  
FLAGS!!

IT'S SPRINGTIME!!!

SO LOOK OUT FOR CORNISH NEW POTATOES  
AND THOSE TASTY CORNISH STRAWBERRIES  
AT  
COLIN'S MARKET GARDEN

IT MAKES SENSE TO BUY LOCAL PRODUCE  
LOCALLY!!!

THAT WILL CUT DOWN YOUR FOOD MILES

AND HELP YOU ON YOUR WAY TO 5 A DAY



## EARLY RECOGNITION FOR ROSEWARNE MANOR

Recently opened Rosewarne Manor has had an interesting March. Firstly it held a very successful inaugural wedding fayre early in the month, attended by numerous couples planning their big day. Several local businesses took the opportunity to display their wedding services. Free wine tasting and canapés were on offer as well as tastings from a giant chocolate fountain.

The very next day was Rosewarne's busiest so far with numerous Mums treated on Mothers Day.

Then came news that Rosewarne Manor had been awarded Cornish Accredited Restaurant status. It joins less than 50 eating establish-

ments throughout Cornwall to be accredited in this way. This gives the Hayle area its second dining place (the other is the Lamb & Flag Inn) to be so recognised, both being under the wing of Cyril & Gill Eustice. Membership is recognition of high quality meals, an emphasis on local produce, and of the fact that the chefs make everything fresh on the premises.

Then along with many other businesses and homes Rosewarne was hit by the March storms. The entire roof from a farm building in the adjoining field landed in the middle of the large lawn. No one was hurt but for a few days Rosewarne's lovely gardens were strewn with debris, although business continued as usual.

Looking ahead, Rosewarne



- ❖ Beautifully refurbished
- ❖ Open for lunch & evening meals
- ❖ Superb Sunday roasts served all day
- ❖ Bar & restaurant overlooking landscaped gardens
- ❖ Patio & al fresco dining area
- ❖ Families very welcome
- ❖ Supporting local farmers - we use fresh local produce
- ❖ Great venue for special occasions, group bookings, receptions & business events

**Telephone 01209 610414**

**Gwinear Road, Connor Downs, Nr. Hayle TR27 5JQ**

**[www.rosewarnemanor.co.uk](http://www.rosewarnemanor.co.uk)**

hopes to host a prom concert by Heyl Town Band. A date has not be finalised but watch this space or call 01209 610414 to find out more. Rosewarne Manor is now open 7 days a week.

**St. Erth & Hayle  
Cars  
0770-60-40400**

TALK TO THE DRIVER NOT AN OFFICE

[www.myspace.com/sterthandhaylecars](http://www.myspace.com/sterthandhaylecars)

PRIVATE HIRE

## Hayle in Bloom

**We held our A.G.M. on Monday 25 February at Hayle Rugby Club.**

Elected officers were:

Chairman – Marjorie Roberts

Vice Chairman – Dick Horwell

Secretary – Margaret Tanner

Treasurer – Sarah Turk.

Now we are getting prepared to make Hayle the town to show off to the visitors. The Library project is progressing and should be completed in May/June. This will be a spot for the whole community to enjoy and will be both peaceful and relaxing.

On the social side we enjoyed a superb meal at the Hayle Foundry Bar on February 15 and were made very welcome by Julie and Tracey – well recommended.

Hayle Community School made nine bird boxes for our use and these were presented to our Deputy Mayor John Coombe and Dick Hor-

## PLANTECH

THE FRIENDLY RELIABLE SERVICE

- Lawns cut and borders weeded
- Hedges trimmed
- House, garden & building waste taken
- Garden clearance work
- Gravel, sand, topsoil delivered & laid
- Garage and loft clearances
- Free no obligation quotes

(Tel) 01736 754401 / 07979546434



well. Five of the bird boxes have been placed on the Memorial Walk and four were placed at the Millpond on Tuesday 18 March; our thanks and appreciation to Mike and Alvin for putting them up, also John and Dick and to Marion Coombe for taking the superb photographs.

The ladies from U3A are taking over the plot in front of the Library and we are delighted to welcome our sponsor for that plot, who is Terry Bromfield of Greenfield Plants at Wheal Alfred.

The forms have gone out for the painting competition and we do hope that all the schools will participate as the Royal Horticultural Society and we are very keen for them to take part.

We hold our meetings at Hayle Rugby Club on the last Monday of

each month, starting at 7.30pm. We will be delighted to welcome anyone who would like to help, maybe a bit of weeding, you can make such a difference to helping our town look lovely.

**Marjorie Roberts, Chairman  
Hayle in Bloom**

## *Hayle and District Bowling Club*

The summer season is nearly with us again and the club has entered six leagues giving ten teams the opportunity to show their skill at bowling. The club is keen to get new members and the bowling green is open each Sunday morning from 10.00 – 12.30 (weather permitting) for people to

come and try the sport; equipment is provided.

During the winter period the club has run a Wednesday afternoon league which has been successful with six teams taking part. The very kind February weather was a bonus for the players.

The club has received a grant from Hayle Town Council to purchase two sets of Junior Bowls which are a very welcome addition to the equipment held by us in the hope of encouraging younger players.

Many quiz sheets were sold; this was the club's first attempt at this and we pass on our thanks to all who took part and to Bill Baker for getting all the questions and answers sorted out. The winner was Mrs James who got 93 questions

**OCEAN DRIVE**  
REVIVE  
**BED & BREAKFAST &  
CORNISH CAFE**

*Fancy a  
cream tea??  
Or lunch  
out??*

Our Cornish Café offers you a light lunch, homemade cakes & cream teas (£3.00) – Excellent value for money!

Our Victorian house offers you bed & breakfast with all rooms en-suite, £25.00 per person, per night.

We are ideally situated on the main coast road leading from Hayle to Gwithian & within walking distance of our spectacular beach, Gwithian Sands, leading onto Godrevy Lighthouse.

**Opening Times:  
Thurs–Sun 12-5pm dreckly!**

**Gwithian Court, Upton Towans,  
Hayle TR27 5BJ Tel: 01736-757952  
Email: [oceandriverevive@btinternet.com](mailto:oceandriverevive@btinternet.com)**

right out of 100, being closely followed by entries with 90 and 88 correct answers. The club will bring out another quiz in the early summer.

The Easter Egg draw has tempted those who love chocolate and we thank all those who took part in support of the club. The draw for the 8 kilogram Easter Eggs was completed by Hayle Town Mayor Paul Birch, witnessed by a few hopeful (but disappointed) club members. The winners were Mr C Thomas from Hayle and Mr P Collins from Portreath.

The club wishes to thank those who helped sell the draw tickets.

**W J E Wallis**

## YOGA

Beginner's Classes on Tuesdays

9.30-11am: Passmore Edwards Institute

6.30-8pm: Hayle Surf Life Savers Club

*£5 per class or book 10 for £45*

Contact Gwyn on 01736-791638

Mobile 07815-945695

## THE VIEW FROM THE STEEPLE

**Hello, my friends, it is good to be back with you once more.**

I was not sure whether to re-title this piece "The View from the Back Porch" because the residents of the belfry became refugees when water started to seep through the roof into the bell-tower and the organ loft. When the builders arrived and climbed up onto the very top roof of the steeple they found the parapet

## PENPOL GARAGE IN TUNE WITH TECHNOLOGY

**ALL MAKES OF VEHICLES  
REPAIRED & SERVICED**

.....

**AIR CON RE-GAS  
£ 40 + VAT**

.....

**ENGINE MAN.ABS.AIRBAG  
DIAGNOSTICS  
FREE PRE-MOT CHECK**

.....

CHECK US OUT

[www.GoodGarageScheme.com](http://www.GoodGarageScheme.com)

TEL:01736 757011

MOB: 07921 218448

and gutters choked with sand blown in by all those semi-hurricanes we have suffered lately. Five sackfuls were removed before the problem was solved, but the organ has been badly damaged by the damp and will need major repairs before it can be played again.

We are much indebted to Praze Hayle Male Choir for the loan of their spare portable organ. The Choir were also the first guests of the 9<sup>th</sup> Winter Concert season, giving us a very enjoyable programme to start off the year. The soloists were members of the choir and Geoff Gascoigne, who sang "The Music of the Night" from "Phantom of the Opera" was really outstanding.

St Elwyn's started the season of

Lent by celebrating Candlemas on 2<sup>nd</sup> February with a special service sung by the Penwith Deanery Choir and on Sunday 3<sup>rd</sup> February the children had their own Candlemas procession as part of their service. This year we were joined by the congregation of St. Joseph's R.C. Church to follow the Stations of the Cross each Friday during Lent. We alternated the services between St. Elwyn's and St. Joseph's bringing both congregations closer together.

St Elwyn's Feast Day was celebrated on 24<sup>th</sup> February with a shared lunch after the morning service and rounded off the day with a very entertaining concert by Treverva Male Choir which was in very fine voice. Treverva are one of the best of the smaller male voice

choirs on the circuit.

The March Children's Service was held on Mother's Day and the children presented the adults with bunches of daffodils to mark the day.

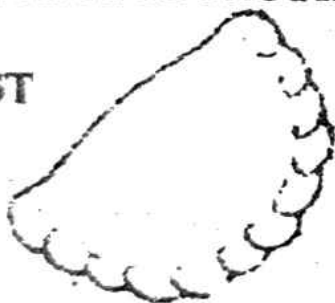
The latest fierce storm to batter us left us wondering about the fate of the West Window and the possibility of it becoming the most expensive jigsaw in Cornwall. St Elwyn's is already looking into ways of raising the money to restore and repair this unique example of the art of stained glass, and a programme of events will be announced shortly.

In the meantime we have dried out the belfry and are gradually moving back in again until the next deluge. Maybe we should follow Phillack's example and take a course in Ark

# PHILP'S

FAMOUS PASTIES

EST



1958

**\*BAKING 7 DAYS A WEEK\***  
**FOR THE GREAT TASTE OF**  
**CORNWALL'S**  
**PREMIER PASTY MAKERS**  
**WITH OVER 40 YEARS**  
**EXPERIENCE**  
**VISIT US NOW**  
**AT OUR SHOPS AT-**



**1, EAST QUAY,**  
**HAYLE**  
**01736 - 755661**



**1, FOUNDRY HILL,**  
**HAYLE**  
**01736 - 753302**



**MARKET PLACE,**  
**MARAZION**  
**01736 - 710332**



**THE SQUARE,**  
**PRAZE & BEEBLE**  
**01209 - 831360**

building!

Global warming, bah humbug! I am writing this sitting on the radiator wearing leg warmers, a scarf and woolly hat.

See you again soon, I hope!

*The Sanctuary Sparrow.*

### BIZ AND BYTES

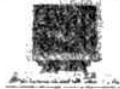
07974 647524

01736 755971

If you require computer assistance, either training or to resolve a problem then give us a call. Visits arranged to suit you. [www.bizandbytes.co.uk](http://www.bizandbytes.co.uk)

[enquiries@bizandbytes.co.uk](mailto:enquiries@bizandbytes.co.uk)

Looking after the home user and small businesses. WEBSITES•BROADBAND•TRAINING•COMPUTER SUPPLY•TYPING



# salt\*

Kitchen/Bar

25 FOUNDRY SQUARE  
HAYLE TR27 4HH

[www.saltcornwall.com](http://www.saltcornwall.com)

In our last issue there was a £10 prize offered by Toby at Salt Kitchen/ Bar to the person who came up with the most words using the letters in S A L T in the correct order.

The winner is Mrs R. Hutchings, who sent in a list of 216 words. Well done, and enjoy your winnings. We're sure you'll find something on the menu to enjoy, (the coffee is great and we can vouch for that)!

*A historic pub  
full of character*



- Everything made fresh on the premises.
- Supporting local farmers – we use fresh Cornish produce.
- Lunchtime bar menu & evening restaurant menu.

*Bookings taken:*

*01736-753289*

Find us on the A30 just west of Hayle.

*Member of Cornish Accredited Restaurants*

## Hayle Summer Carnival

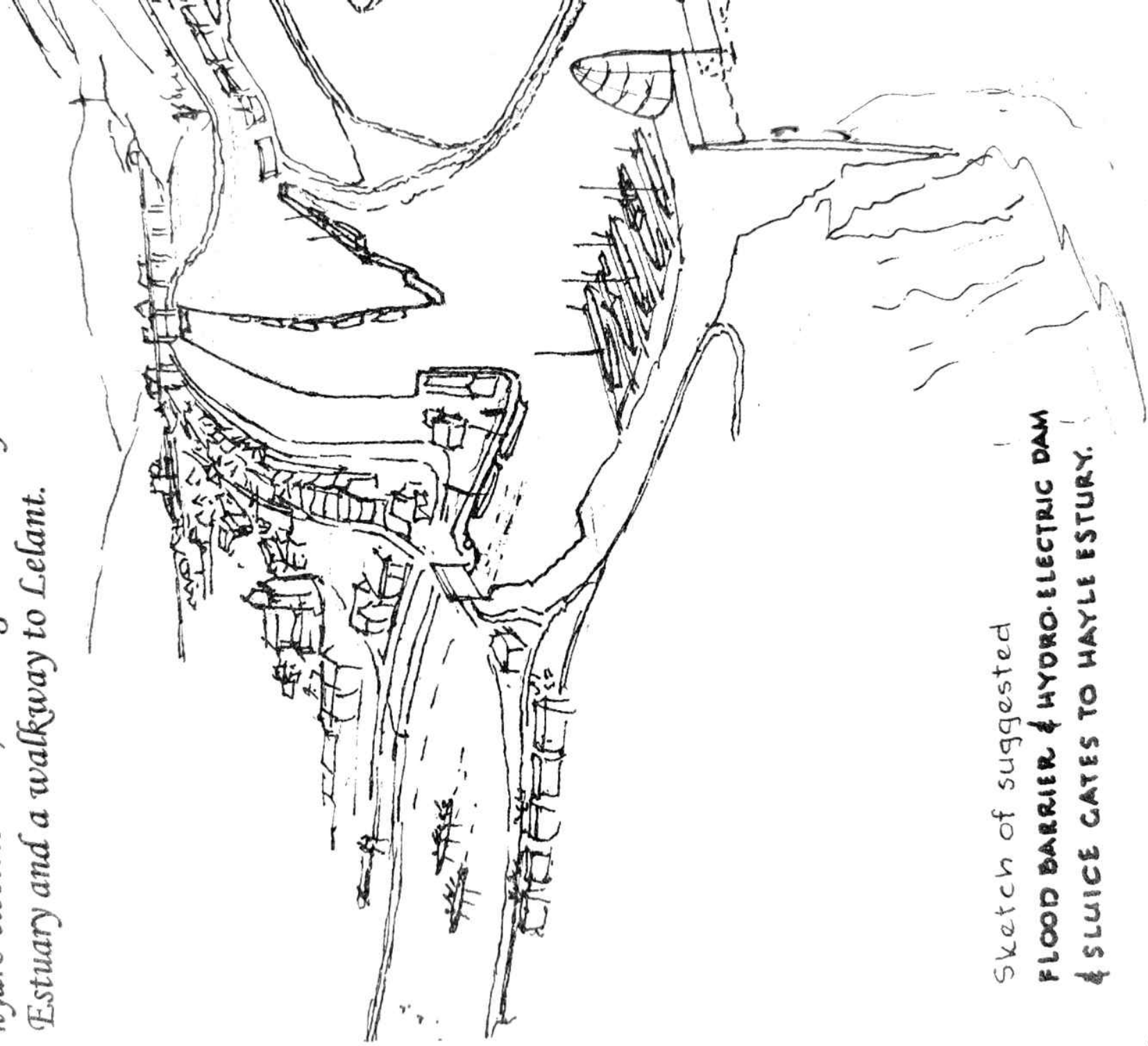
The committee is now busy organising the summer carnival which this year is on Saturday August 2<sup>nd</sup>.

BUT there can be no carnival without entries. Chris Lello and his farming friends give their tractors, trailers and their time free of charge as do Heyl Town Band and we thank them for that.

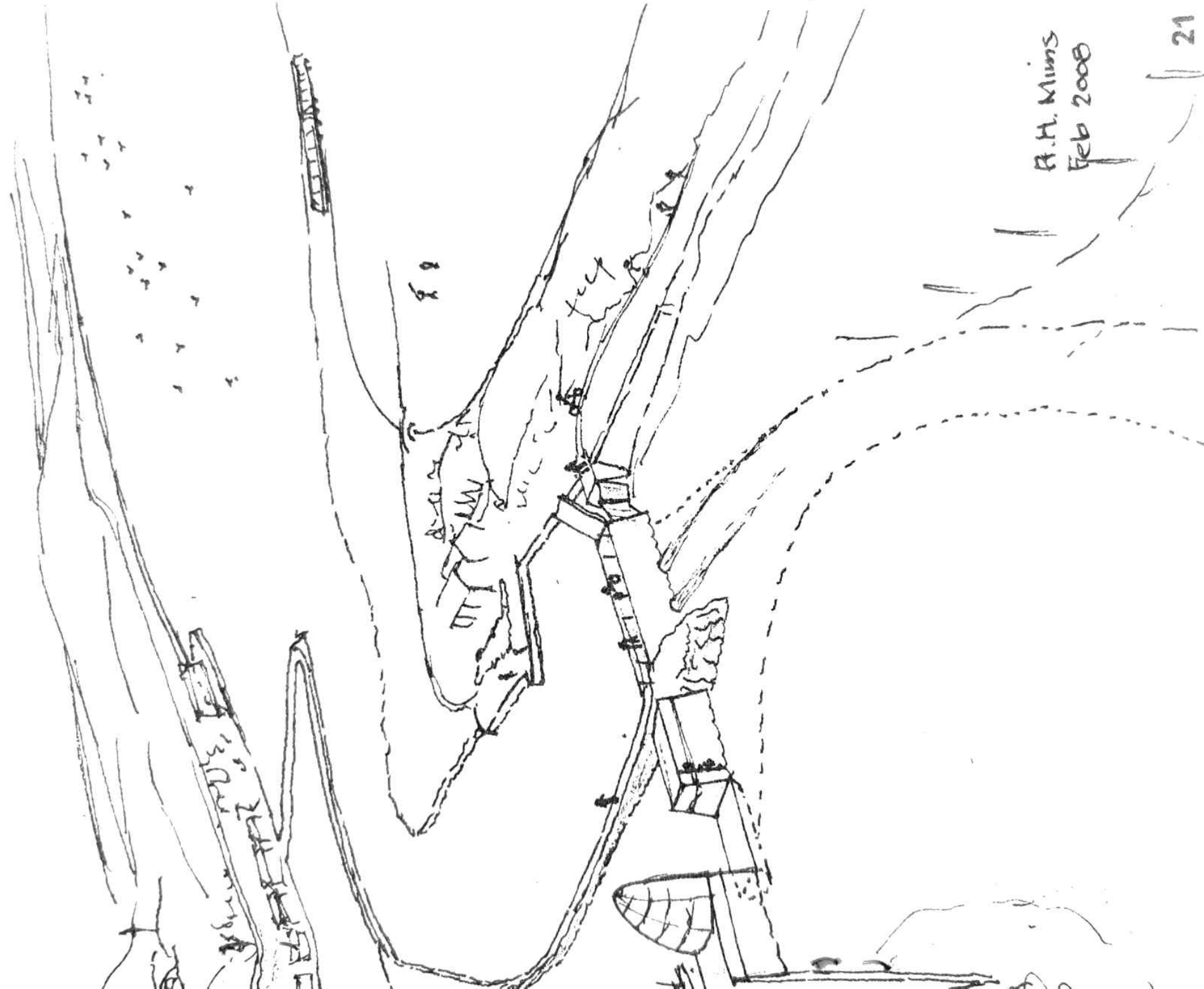
Now it is your turn, so come on all you clubs and organisations, please give up a little of your time and support your carnival. It will be too late when it ceases to exist.

For further information ring:  
Richard Horwell 01736 752597 or  
Jayne Quick 07717021386  
*R. Horwell (chairman)*

*Artist's impression of the Lelant Pool proposal that was printed in the last issue of the Pump, showing the flood barrier, hydro-electric dam, sluice gates to Hayle Estuary and a walkway to Lelant.*



Sketch of suggested  
**FLOOD BARRIER & HYDRO-ELECTRIC DAM  
& SLUICE GATES TO HAYLE ESTURY.**



A.H. Mims  
Feb 2008

## LETTERS...

### *Cycling on pavements*

*I am somewhat bemused at the discussions about cycling on pavements. As a former fixed penalty officer with the Devon & Cornwall Police I can state that there shouldn't be any need for discussions through the Pump. Other than in designated areas, cycling on a pavement is, and always has been, an offence which will incur a fine. It's silly, as someone said, to compare the number of pedestrians being injured by cyclists to that of cyclists being knocked down by cars. Pedestrians will, quite readily, give way to a cyclist on a pavement and this again is wrong. Any pedestrian should do as I do, and make the cy-*

*clist get off.*

**Barry Thomas, Illogan**

### **Lelant Pool proposal**

*I have just read the article in the most recent edition of the Hayle Pump (issue 80 Feb/Mar 2008) re the Lelant Pool proposal and find it most interesting.*

*I do hope that the proposal becomes a physical reality as there is genuine concern from a lot of my friends and neighbours that without intervention the estuary and pools will silt up and become un-navigable*

*As a walker who uses the coastal path to walk from Hayle into St Ives, a path across the pool would save me a 45 minute walk round the pool. So the proposal gets my vote.*

*Please pass on my thanks to all*



— maintaining your lifestyle —

### **NEW CLINIC for HAYLE**

Opening in April the **COPPERHOUSE CLINIC** offering a range of healthcare services. Treatments on offer will include:

Chiropractic

Chiropody & Podiatry

Sports injury massage

Reflexology

Laser Therapy

Addiction/phobia therapy

**For more information ring 01736 759088 or  
email:enquiries@cornwallclinic.co.uk**

involved in the production of the Pump as I find it interesting and informative. Well done and keep up the good work.

Kind regards

**Chris Roantree**

**Albertus Drive, Hayle**

### **Easter time**

As I write this on Good Friday, the wind is howling and it is one of the coldest days of the year. In the UK we have fewer bank holidays than any other European country, and this year one of these breaks has been completely spoiled for anyone other than masochists by scheduling the Easter holiday in what is still winter. I've never understood why Easter is a moveable feast, governed by the moon - I am not of a religious persuasion, but it seems to me that if Jesus Christ was born on a specific date, i.e. December 25<sup>th</sup>, then surely He must have died on a specific date.

Apart from religious considerations, the shifting about of the Easter break plays havoc with school terms and also with the tourism industry, particularly here in the South West, which depends on a good Easter to kick start the summer season.

Surely it is not beyond the wit of our elected movers and shakers to fix the long weekend spring break somewhere around Mid-April, when at least there is a sporting chance of slightly warmer weather, and it could be called by a different name. (I understand that Parliament passed just such a measure as long ago as 1928, but for some reason it was



## **CLIFFORDS PLUMBING and HEATING**

For all your plumbing and heating needs

From a dripping tap  
to a complete bathroom  
or full central heating

Friendly, reliable and tidy service

**01736 755170**

**07761 938183**

**DO YOU NEED  
A REGULAR  
WINDOW  
CLEANER?**



**David Morris Window  
Cleaning**

**We are already well established  
in your area ( 8 years)**

**High reach cleaning system.**

**Phone Dave for a free  
quote on**

**01736 756394**

never enacted.) This change would not stop those of a religious inclination from acknowledging the moon-based dates which send Easter flying all around the spring calendar, Good Friday and Easter Monday just wouldn't be bank holidays, although of course from time to time they would coincide with the mid-April break.

Another ridiculous thing about this year's early Easter is that the clocks hadn't even gone back – but don't even get me started on that!

**Grumpy Old Man – Name & Address supplied**

### **Flood Barrier proposal**

I write in support of the forward thinking proposal in Issue 80 of the Pump, regarding the Hayle Estuary. This is one of the finest natural har-

bours on the North Coast and an area of natural beauty although exploited.

Since the Industrial Revolution, to which we owe our high standard of living, there has been little improvement, if any. We have to start somewhere and giving a little back to the port of Hayle would open the "flood gates" to numerous opportunities.

In support I will volunteer two hours a week.

I have enjoyed over 50 years on Hayle Bar, boating and sluicing. I have taken courses in off-shore navigation, I am a day skipper, ocean yacht master and am a life-boat governor.

**John Buchanan**



# **NEIL WADE**

**MOTOR ENGINEER**

**CENTRAL GARAGE**

**10A HAYLE TERRACE, HAYLE**



\*\*\*\*\*

## **MOT CAR & MOTORCYCLE TESTING CENTRE**

**DIESELS & CATALYSTS TESTED\*SERVICING\*REPAIRS\***

**WHEEL BALANCING\*EXHAUSTS\*TRACKING\***

**TYRES\*BATTERIES\***

**PROVIDING SERVICING & REPAIRS TO ALL MAKES OF VEHICLE**

**TEL 01736 756512**

**MOB 07990 981546**

**HOME 01209 610651**

## Green gardener

Martin Penney is a man with a mission. He currently runs a garden services business and feels that there are people in Cornwall who would like to have the choice of having their garden maintained without affecting the environment.

Consequently he will be starting a new venture in April, which will be completely carbon neutral. All the tools will be hand powered and he will reach customers by bike, with a trailer. There will be no use of diesel, petrol or electricity and hopefully, through other organisations, he will encourage recycling of the green waste. Martin thinks that this may be the first service of its kind on offer anywhere.

Tel: 08453 243 455 / 07866 446 151

Email [green.gardener@hotmail.com](mailto:green.gardener@hotmail.com)

### **GARDENERS!**

#### **WORM BED MANURE**

Very rich natural compost ideal for tomatoes etc.

25+ litre bag £2.50

Loose by arrangement.

Local delivery

**01736 754087**

## **PRAZE HAYLE MALE CHOIR**

### Two years on

The choir held its AGM in March signalling two years since its formation. Last year it undertook 29 engagements- concerts both indoor and outdoor. We are pleased that

## **HAYLE CHILDREN'S CENTRE**

- Bodriggy Street -

*Dedicated to offering local families a wide range of support and fun things to do:*

- Full day care available on site
- Cafe open to all (homemade food)
- Toy library
- Play activities
- Health advice during & after pregnancy
- Drop-in benefits advice sessions
- Training opportunities & classes
- Children's party & activity rooms for hire

*For more information, pop in to pick up a monthly "What's On" guide, or call 01736-759058.*

Family  
Services

SureStart



David Moyse will continue as President for another year and the choir thank him for his continued support. The choir committee membership will be unchanged for the coming year.

The choir appreciates the Porthminster Hotel's continuing sponsorship and the Blue Anchor, Helston for their help with fundraising and social functions. The choir held its dinner at The Porthminster on Friday 14 March.

### Recent events/concerts

The choir, with musical director Ann Birch and accompanist Una Skelington, was at St Elwyn's, Hayle in January. It was the first in a series of monthly choir concerts organised by Hayle Lions and included solo and quartet contributions from the

choir. Crowan Feast was celebrated with an evening concert at St Crewenna Church, Crowan, in February which was chaired by Tony Jose from the choir. With MD Ann Birch and accompanist Margaret Bilkey, the choir sang two short sets before the finale when the choir combined with the younger voices of the children from Crowan School, who had earlier made their own contributions to the event. They sang together 'I'll sing a song' and then finally 'Trelawney' in which this year a father and son took part- Stephen Johns from Praze Hayle and Sam from Crowan School.

**Forthcoming events**

**Friday 4-6 April**

Trip to Chippenham and Abingdon

**Sunday 20 April**

Presentation Concert, Hayle Day

Centre 7.30pm

**Saturday 26 April**

Trevithick Day, Camborne Square

2.15pm

We continue to seek new members to the choir so if you want to know more please contact Roger Evans,

Secretary, ☎ 01736 754681 or John Barraclough, Asst Secretary, ☎ 01209 831879, or on line at [www.prazehaylemalechoir.co.uk](http://www.prazehaylemalechoir.co.uk) or via email [info@prazehaylemalechoir.co.uk](mailto:info@prazehaylemalechoir.co.uk),

**FOOTSTEPS**

5 Penpol Terrace, Hayle

01736-757735



Your friendly family footwear shop.

New spring & summer styles arriving daily!

\*\*\*\*\*

Did you hear the one about the matador who mislaid his cape?  
*He had a señor moment.*

\*\*\*\*\*



**ALL AERIALS**

**Digital Is Coming Are You Ready ?**

**DIGITAL TELEVISION SPECIALISTS**

**Members of the Confederation of Aerial Industries**

**DIGITAL AERIAL INSTALLATIONS & UPGRADES**

**ALL WORK GUARANTEED \* FULLY INSURED \***

**COMPETITIVE PRICES \* PROMPT RELIABLE SERVICE**

**FOR FREE FRIENDLY ADVICE CALL JONATHAN**

**01736 759225**

**Mobile 07979503907 / Email [jon@allaerials.co.uk](mailto:jon@allaerials.co.uk)**

**[www.allaerials.co.uk](http://www.allaerials.co.uk)**



**The Big Breakfast at the Methodist Church Hall on March 15 raised the wonderful total of £1,245 for Cancer Research.**

Do you have a local issue that a Councillor could help you solve?....



Come and meet your local Councillors at their Drop-In Surgery Every Friday at Hayle Children's Centre

2.00pm-3.00pm

If you wish to make an appointment, contact Mrs Terry Lello, County Councillor, on 01736-757507 or email: [tlello@cornwall.gov.uk](mailto:tlello@cornwall.gov.uk).

## John BENNETT

Independent

Hayle Town Council

Penwith District Council



***Your representative for Hayle South Ward***

Despite strong representations from Hayle Town Council and my own detailed submission, the Penwith District Council planning committee approved a design brief for the Hawkins site that allows for six market and six affordable dwellings covering about two-thirds of the area. This is still in consultation, so please let me have your views as to whether the PDC position is acceptable. More information is found on my web site and in my display case at Martin's.

Telephone: 01736-753184

Email: [john.bennett@penwith.gov.uk](mailto:john.bennett@penwith.gov.uk)

Web site: [www.hayle.net](http://www.hayle.net)



## **CUTTING EDGE TREE SURGERY/ STUMP GRINDING**

**NPTC Qualified & Fully  
Insured**

**(5m public liability)**

- Felling • Dismantling
- Pruning • Hedge Cutting
- Stump grinding

**For FREE Quotations &  
Friendly Advice Phone**

**James Searle on  
01736 810218 or 07717 822900**

## *Hidden Words Quiz by Cleverclogs*

**This time we are looking for  
means of travel and transport.**

Example: That actor will never win  
an OsCAR, will he?

Answers by May 20 with a first prize  
of a £20 voucher to be spent with  
any of our advertisers, and a £5  
lucky dip drawn from all entries.

1. I rather fancy clearing an area for  
a parking space.
2. If the volcano explodes, we'll all  
be in trouble.
3. Look at those elephants- does  
Dumbo find Jumbo attractive?
4. It seems the Vikings travelled the  
Atlantic before Columbus.
5. The building contractors certainly

made a mess of it.

6. Is cocoa cheaper than other hot  
drinks?

7. Don't talk to me about council tax!  
I'm poor enough as it is.

8. You can still see the skid marks,  
good job he had good brakes.

9. The old accountants' ledgers are  
in the museum. (2 answers)

10. Look at the tail wag on that dog,  
it just cleared the coffee table with  
one swipe!

11. Sugar? Yes, a little extra in her  
cup, she's a sweet tooth.

12. We'll have the hoop-la next to  
splat the rat at the fete.

13. That ram looks very aggressive  
with those curled horns.

14. He was mesmerised by the  
swaying belly-dancer's hips.

15. Another one of your tricks. Ha!  
What will you try next?

Answers to quiz in last issue:

- |               |                        |
|---------------|------------------------|
| 1. Battenberg | 9. Sponge              |
| 2. Lardy      | 10. Marble             |
| 3. Angel      | 11. Layer              |
| 4. Simnel     | 12. Carrot             |
| 5. Saffron    | 13. Topsy              |
| 6. Genoa      | 14. Chocolate          |
| 7. Madeira    | 15. Date and<br>Walnut |
| 8. Dundee     |                        |

The winner of the £20 prize was Mrs  
B. Rutter of St. Ives and the winner  
of the £5 lucky dip was M. Coombe  
of Hayle.

## **FAX ROLLS.**

**Do you have a fax machine?** The  
Pump has a box of fax rolls 210mm  
x 30m x 12mm. Free, (or a small  
donation of £2 to the Precious Lives  
appeal). Ring Sarah 01736 752319

## Millpond Update

*A cautionary tale of a very close shave.*

I believe that I previously remarked on how peaceful the Millponds are during the winter. That proved to be famous last words when an articulated lorry decided to make a detour through the back lanes. The resulting ruptured fuel tank sent 300 gallons of diesel down the river into the ponds causing serious pollution to the whole system.

The Environment Agency put booms across the river, the outfall and between the ponds to contain the spillage and the outer pond was filtered, but it took ten days to get rid of the diesel and the awful smell.

The RSPCA removed the swans

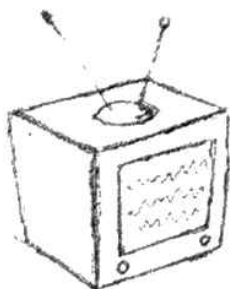
and there is a distinct possibility that they will not be returning them to the Millponds. Their main concern is the lack of grazing. Wildfowl need grass to keep them fit and healthy, and the RSPCA has tried to persuade Penwith not to cut the grass along the front of the ponds. There are some of the world's best grass trimmers living on the ponds which would benefit from a constant fresh supply. Now we are swanless, maybe Penwith will listen to us!

Ollie became the star of West-country News, being caught on camera evading capture. It's a shame that 'Supergoose' still flies like a brick!

The Millpond Miscellaneous have gone from five to nine in the past few weeks. They have been joined by Aled a Welsh Harlequin drake,



## Problems setting up your DVD - TV - Video - Digibox?



*We offer a set-up service!*



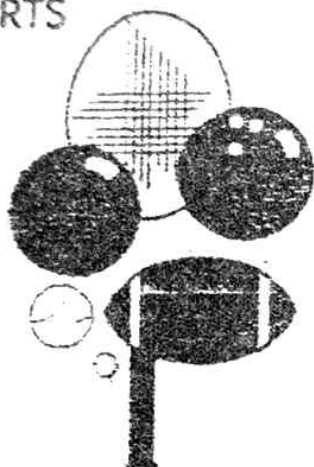
**MURTS TELEVISION**  
**32 Penpol Terrace, Hayle**  
**Repairs / Sales / Rentals**  
**01736-752269**



# ANGOVE SPORTS

COPPERHOUSE, HAYLE  
01736 - 752238

FOR ALL SPORTS  
EQUIPMENT  
CLOTHING &  
FISHING  
TACKLE  
\*  
RACKETS  
REPAIRED  
& RESTRUNG



## Vehicle Transport and Recovery



Fast & friendly service

Service & M.O.T. work  
undertaken

Malcolm Hendra

Mobile: 07768 35 44 33

Home: 01736 754213

Elvis a Silver Appleyard drake, plus Charles and Camilla a pair of Crested Ducks. Aled and Elvis already have female companions because Cilla and Bronwen were put on the ponds during the autumn.

The recent storms have blown in a couple of Glaucous Gulls and a pair of Little Grebes. We get two or three of these winter vagrant gulls every year. The feral flock of mallards have moved on, but maybe only as far as Strawberry Lane for a short stop-over at Sharkey's Pit.

Work has started on laying the new safety surface for the children's play area and new seats and waste bins are still to go in.

Nine nesting boxes made by the children at the Community School have been put up on the Ropewalk. This is the first phase of the school project with Hayle in Bloom. Next spring bat boxes will also be put up, plus some owl boxes. Nine bird boxes have also been put up along the Memorial Walk, with bat boxes too in 2009.

Finally, can I make a plea to the motorists using Millpond Avenue to slow down! There is no need to use the Avenue as a race track, endangering not only the wildlife but everyone else visiting the ponds. Thank you.

*Georgina Schofield*  
Volunteer Wildlife Warden,

## Hayle Decorative Lights

Our next quiz is on April 25 at Hayle Rugby Club, 7.30 for 8.

There will also be one on May 23, same venue, same time. These

quizzes are vital fund-raisers for us, so please come along and support your lights team.

We are in desperate need of some volunteers to help, work goes on throughout the year getting everything ready, mending set-pieces etc., and our present team is increasingly decrepit, and Dick isn't getting any younger, so if you want lights in Hayle at Christmas, please consider joining us.

**Hayle Decorative Lights.**

### **SINGER & PFAFF SEWING CENTRE**

Authorised Singer Service Centre for Cornwall

*All makes serviced*

**11 ST. JOHN STREET, TRURO**

**01872 225168**

Mr & Mrs D.M. Girling

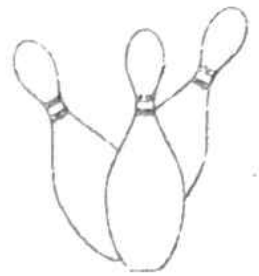
### ***The Gambia Revisited...***

On 11 January, with other members of The West Cornwall Link with the Gambia team, I set off on our trip to West Africa, leaving Bristol Airport with the temperature near freezing; six hours later we were experiencing 32 C in Banjul.

Our two week stay in the Gambia was once again memorable. Although much of our work is concentrated in the capital Banjul and nearby Brikama, we travelled 'up river' – a journey of 290 miles to McCarthy Island. While there we visited the nursery school at Banni and the site of our new clinic at Jameli.

We were so moved by the wel-

## *Country Skittles* ...



...welcomes Pump readers of all ages.

4 traditional 9-pin skittle lanes

Restaurant & snack menu available at all times

Roast lunches served all day on Sundays

Fully licensed bar

Target shooting gallery

Crazy golf

Pool Table football

Air hockey Batak

Lots of traditional board games & many other games to play.

We cater for groups large and small, and provide an ideal venue for family get-togethers, birthday parties and works outings.

To get to us, take the B3302 out of Hayle towards Helston and turn right when you see our sign just past St Erth Praze. We are about half a mile up that road.

Booking in advance is advisable at busy times.

For further information ring us on 01736 850209

# Barbara Spann

*MCFHP MAFHP qualified*

Foot Health Practitioner  
Clinic and Mobile Services

**36 Fore Street, Barriper  
Camborne, TR14 0QR**

Services available for:

- Routine foot and nail care
  - Corn and callus
- Hard skin removal
  - Ingrown nails
  - Verruca removal
- Diabetic foot care
- All conditions causing foot discomfort



Please contact me if I can help.

For an appointment,  
telephone 01209-712717  
or my mobile 07899-014321

come we received everywhere we went, and have returned with so many precious memories. Whilst in the nursery school the children were given the bread, peanut butter and drink we provide for them each day. We were overcome when the little ones started offering some of their food to us. When entering Jameli the villagers entertained us with drums and dancing, and we were greeted by the chief. Jameli is an isolated community, and we had to

rely on an interpreter to converse with the people.

We were fortunate that the nurse in charge of the Methodist Medical work in the Gambia was able to travel with us to Jameli and she will continue to visit the people there. Building work on the clinic is now under way to avoid the heavy rainfall in June. Once the building is complete, visiting government nurses will provide maternity and medical care. The ladies at Jameli provided delicious food for us, as well as making 124 tie-dye bags to help us raise funds for the clinic.

We experienced many other wonderful visits to Marakissa, Berending and Kassa Kunda, and met up with friends in Barra. We spent valuable time with the young people whose education is being sponsored by people in West Cornwall and further afield.

I would like to take this opportunity to thank all the people in this area who have generously donated money for our projects, or given their time to make blankets, bags and jumpers. The beaming smiles of the Gambian people conveyed all the thanks we needed and showed us just how much your help was appreciated.

**Marion Coombe.**



## W. J. WINN

FUNERAL & CREMATION DIRECTORS  
PRIVATE CHAPELS OF REST  
24 HOUR SERVICE



69, FORE STREET  
HAYLE  
01736 752124

&

TRENWITH TCE  
ST. IVES  
01736 793029

## Hayle Craft and Flea Market gets a New Venue

Over the past 3 years, Hayle Craft and Flea Market, held regularly on Fridays at Phillack Church Hall, has proved a very popular and successful venue for all kinds of goods. Collectors, crafters and bargain hunters have been catered for with a selection of interesting books, maps, jewellery old and new; photographs and prints, china, collectables and lots more. Homemade cakes, scones and filled rolls have been tickling peoples' taste buds and the smell of bacon or sausage butties has proved a strong draw. If you haven't been yet, it would definitely be worth the trip.

### New Venue

After Friday 28 March the market's venue will change because Phillack Church Hall will be closing for refurbishment.

From Friday 4 April 2008, Hayle Craft and Flea Market will be held at St. Elwyn's Church Hall.

**Future dates for the Hayle Craft and Flea Markets are:-**

April.... 4, 11, 18, 25  
May.....2, 9, 16, 23, 30.  
June....6, 13, 20, 27.  
July ....4, 11, 18, 25.  
August..1, 8, 15, 22-25 (Bank Holiday Weekend), 29  
September..5, 12, 19, 26.  
October.....3, 10, 17, 24, 31.

The market is open on Fridays between 10 am and 4pm.

**Book and Antiques Fair**  
From Sunday 13 April the Book

## ALAN ORCHARD & SONS

APPRENTICESHIP SERVED



PROFESSIONAL TRADESMEN

**CARPENTRY & JOINERY**

uPVC FASCIAS

ROOFING, BUILDING,  
DECKING

KITCHEN FITTING

01736 756687

07787 148571

27 GUILDFORD ROAD  
HAYLE TR27 4PP

and Antique Fair will move to a new home at the Carbis Bay Memorial Hall.

Opening times 11am – 3pm

For further information on both fairs please contact :-

**Gill and Graham at Cormelian,  
Pratt's Market, Chapel Terrace  
Hayle**

**01736 755890 or 07974 000747**



**RSPB**

**NEWS**

### Oil spill at Hayle

On Thursday morning 21 February Jenny Parker, RSPB Assistant Warden received a report of an oil spill at Hayle. When she visited the estuary to investigate the extent of the

oil spill, she found no trace on the nature reserve or the wider SSSI protected area. On further investigation, she found oil had reached the upper reaches of Penpol Creek in the harbour. Dave Flumm, RSPB Site Manager, immediately reported this to the Environment Agency and the Harbourmaster. Jenny said, 'It was the quick actions of the Harbourmaster that prevented this localised incident from affecting the nationally protected Hayle Estuary area. At this time of year there are still hundreds of migrant ducks and waders using the estuary and an oil slick just weeks before they leave for their breeding ground could have been devastating'. HHML hired a company to contain the spillage and soak up the oil.

Unfortunately, the millpond did not

escape the effects of the oil and several of the ducks and the swans had to be rescued by the RSPCA officers. Jenny added 'When I arrived at the pond there was a pungent smell in the air and the surface of the pond was covered in a thin film of oil and this had coated the feathers of most of the ducks and the swans.

When birds have oil on their feathers they leave the water to preen; heavy oil can affect the birds internal system and they can be poisoned but according to an EA officer this is not the case with fuel oil. Therefore, the main problem was that the birds could become water-logged and chilled to the core, which would be fatal. Local residents agreed to monitor the birds and take them in or contact the RSPCA if any birds

## **PLANET Showrooms**

*- Great ideas for your home -*

**Kitchens** - Bespoke & Contemporary Designs

**Bathrooms** - Modern, Minimal & Traditional

**Showers & Wet Rooms** - Enclosures, Walk-Ins & more

**Natural Stone & Slate** - from around the world

**Ceramic Tiles** - direct imports from Italy & Spain

**01736 757 453**

Units K1 & G3  
St. Erth Ind Est  
Nr Hayle  
TR27 6LP



• **Hotel & Commercial Contract enquiries**  
please call 07891 235043

became unwell'.

## Hayle Estuary Disturbance Action Group Update

Since the group's meeting on 18 January a lot has happened. It was felt that not enough information about the RSPB Nature Reserve or the wider Hayle Estuary and Carrack Gladden SSSI was available for the public and that this may be the main reason why people continue to disturb the site. In March and April, Hayle Harbour Management Ltd. and the RSPB will install new signs, 50% funded by Natural England across the estuary to inform people that the area is protected by law. If you would like to speak to the people responsible for the management of the estuary then please come along to the Hayle Estuary Open Day on **Saturday 12 April** adjacent to Copperhouse Creek, where representatives from the RSPB, HHML, Natural England and Hayle Police will be available to answer your questions.

*Jenny Parker, RSPB Cornwall Reserves Assistant Warden  
jenny.parker@rspb.org.uk*

## HUMPH LOVES KRIS!

UK jazz legend Humphrey Lyttelton reviewed Hayle jazz diva Kris Gayle's new album '8.00am' on his BBC Radio 2 'Best of Jazz' programme in January. He described Kris as "A favourite vocalist, with a voice which lives in the memory". The CD has also been heavily featured on Radio Cornwall, and sales have been brisk, with copies

## IN HOME COMPUTER REPAIR



### **AWG-Solutions**

*In Home & Small Business Computer Support*

- **No Fix - No Fee**
- **No Callout Charge**
- **Fast, Friendly, Local Service**

**Tel: 01736 757580**

being sent as far afield as Australia, Japan, Belarus and USA.

As for local sales, unfortunately for reasons beyond her control Kris no longer has the CD for sale in West Penwith Music in Penzance. It can be purchased locally for £10 by ringing 01736 757351, or over the internet with secure credit card for £12 inc. p/p from [www.jazzcds.co.uk](http://www.jazzcds.co.uk) the UK's biggest online jazz distributor. Kris's website, with plenty of photos and biographical details, is [www.krisgayle.com](http://www.krisgayle.com).

Kris appeared with New Orleans legend Barry Martyn and his Young Bloods at a sold out concert at the Union Hotel Penzance on February 9<sup>th</sup>, and with Hayle's own virtuoso pianist Viv Rodd headlined another sellout at the Acorn Theatre's Valentine's night engagement on Febru-

# Des Button

Springfield  
33 Clifton Terrace  
HAYLE TR27 4BP

01736 753211  
0778 868 2076

ELECTRICAL  
SERVICES &  
SUPPLIES

Part P  
Registered



ary 14<sup>th</sup>. Most of Kris's gigs for the immediate future are outside this region, but she will be appearing at the Foundry Bar, Hayle on Wednesday June 4<sup>th</sup>, accompanied by guitarist/vocalist John Knight on guitar.

**Goudie Charles**

## A P L E A

*We still dare to hope to find  
The instruments left behind  
At the bus stop on Foundry  
Square*

*8.15am on Tuesday 4th March so  
fair*

*Rebecca she is so upset  
Without her Jupiter flute & clari-  
net  
She cannot practice her lesson  
plan*

*Nor play in the St. Ives Concert  
Band*

*Do you know ? Can you aid ?  
To help cheer up this little maid  
Her Mum and Grandma will club  
together  
To offer some reward or other*

We are still hoping someone will re-  
turn these musical instruments to  
us.

They can be identified by their serial  
numbers. I understand, from speak-  
ing to (local) people at the bus stop  
on the morning of the incident – Re-  
becca's school 'phoned me as soon  
as she realised what she had  
done – that a man tried to hand  
them into the Royal Mail Sorting of-  
fice. I asked at the sorting office -  
they did not take in these items –  
and was told that the man said 'I'll  
take them to the police or the  
school'.

***The trail has gone cold.***

We'd just like a solution – not retri-  
bution – especially as the flute does  
not belong to us !

Thanks to those who have tried to  
help, so far and hoping for a happy  
ending.....

**ALISON JOHNSON**

Tel. 01736 757221

## LENT LUNCHESES

Each Lenten period "Churches  
Together" organise a soup  
lunche, when each church takes  
its turn in making money for a  
particular country in need.

The churches that took part this  
year were Phillack, Salvation Army,  
Hayle Methodists, St. Joseph's R.C.,

Ventonleague, Church on the Rock, and St. Elwyn's/St. Erth.

Home made soup, a roll and tea or coffee for £1.50 were served every Wednesday at Phillack Church Hall.

This year the money raised was for Guyana, in previous years money has gone to the Polish Red Cross, Salesian Institute in South Africa, and the South American Mission Society.

*P. Crellin*

## Precious Lives Appeal

**Children's Hospice South West in Cornwall and Plymouth – "A Must."** Eddie Farwell, Co-Founder & Chief Executive of Children's Hospice South West has said that the Trustees of the Charity have, for some time, recognised that there is a need to bring the very special care offered by this well established and respected organisation nearer to the children of Cornwall and Plymouth. With a supporter base of over 10,000 in Cornwall and Plymouth alone, CHSW is in a position to bring this much needed project to a successful conclusion.

A children's hospice in Cornwall, serving Plymouth and Cornwall, will complete the jigsaw of children's hospice care in our area. Working, as it will, with our two other hospices in Devon and Somerset, the Cornish hospice will benefit from an expert network of professional support and advice.

Families with life-limited children who currently use the nearest children's hospice, Little Bridge House in North Devon, are thrilled at the

## PASSMORE EDWARDS INSTITUTE

13-15 Hayle Terrace, Hayle, TR27 4BU



### MEETING ROOMS FOR HIRE

**Passmore Edwards Room £16 per session**  
Boardroom table seats 16, plus seating for an additional 12. Ideal for business and community meetings. Approx. 7.5m x 5.5m.

**Front Room Downstairs £10 per session**  
Chairs and tables for 40. Suitable for informal meetings, arts & crafts, etc. Adjacent to kitchen. Approx. 7.5m x 5.5m

**Large Room Upstairs £12.50 per session**  
With raised platform. Can seat 100 for lectures and large meetings, or for use as an exercise room. Approx. 13m x 5.8m. *No disabled access.*

There are three sessions per day:  
morning, afternoon & evening.  
Kitchen facilities by arrangement

For bookings and more information contact:  
**01736-756055**

news of the appeal. At the moment LBH supports, and cares for 200 children and their families every year. 70 of these families come from Cornwall.

If you are interested in supporting Children's Hospice South West in any way or would like to know more, we have small groups of "friends" who meet together and plan events etc. We would welcome your enquiries:

**Lorna Coombe; Chairlady,  
Hayle "Friend's" Group  
01736 752831**

**Jill Sharpless; Secretary,  
01736 756896**



children's hospice  
SOUTH WEST



## O'DELL SIGNS

OF ALL TYPES  
Signwriting, Perspex  
Plastic, Engraved,  
Magnetic, Posters,  
Illuminated signs,  
COMPUTER CUT  
VINYL LETTERING  
for Vehicles & Signs

*Embroidery*  
for  
Businesses & Clubs

**HAYLE 01736 753656**

1, Turnpike Road, Connor Downs.

Why the fridge? Because everyone has one, and it saves the emergency services looking through cupboards, drawers etc., they can go straight there.

For more information:

Tel: Adrian Felix, 01736 753161

Email

[Adrian@copper6.freemove.co.uk](mailto:Adrian@copper6.freemove.co.uk)

## HAYLE PUMP

### SUBSCRIPTION SERVICE

For those readers who would like a Pump sent to family or friends elsewhere in the UK, or local people unable to get into Hayle to collect a copy, we operate a postal subscription service.

Simply send us the delivery name and address CLEARLY PRINTED, together with £2.50 to cover the cost of stamps and envelopes, and we will send a year's issue (6 copies) of the Pump as soon as it is published. (UK addresses only – please make cheques/postal orders payable to "Hayle Pump Newsletter").

---

## JOHN PERKINS

We are sad to report that John Perkins, one of our founder members has died. John was an invaluable contributor to the Pump, but unfortunately due to ill-health in later years, he had to resign.

---

We are sorry, but due to shortage of space we have had to hold over the next part of David Baumbach's "Memories of Hayle Rugby Club. It will be in the next issue.

## Message in a Bottle.

**This could save a life –your life!**  
The Lions Club of Hayle & District is promoting the "Message in a Bottle" scheme. The bottles are available FREE of charge from the Lions, most GP surgeries and pharmacies. You complete the information form with your personal details – doctor's name, medical conditions, allergies, care/health visitor details, dependents and family contact details and current medication.

Then place the bottle in your fridge. Place one green sticker (provided) on the door of your fridge.

Place the other green sticker on the inside of your front door.

All the Emergency Services are aware of this scheme and will use this vital life saving information in the event of an emergency.

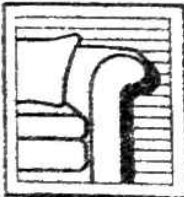
All Aerials...26  
 Angove Sports...30\*  
 AWG-Solutions...35  
 Barton Print...12  
 Bennett, John...27  
 Bigglestons...40\*  
 Biz & Bytes...19  
 Button, Des...36  
 Calmtime (music tutor)...12  
 Cliffords Plumbing...23  
 Colin's M'ket Garden...13\*  
 Cornwall Chiropractic...22  
 Country Skittles...31  
 Cutting Edge (Trees)...28  
 Farm Shop...7\*  
 Fernleigh..11  
 Footsteps...26\*  
 Foundry Interiors...4

Index of Advertisers

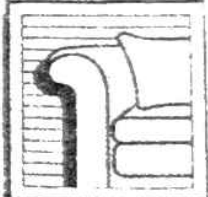
Franklin, P.G...13  
 Hayes. Roy...8  
 Hayle Beauty Clinic...2\*  
 Hayle Children's Ctr...25  
 Hendra, Malcolm...30  
 Hooked on Curtains...3  
 J C Electrical...9  
 Keast, F L...6\*  
 Kernow Electrical...4  
 Lamb & Flag...19  
 Lello, Terry...27  
 Murt's Television...29\*  
 N'jie, David...6  
 Ocean Drive ...16  
 O'Dell's Signs...38  
 Orchard, Alan...33  
 Passmore Edwards...37

Penpol Garage...17  
 Philp's Pasties...18  
 Planet Showrooms...34  
 Plantech...15  
 Rosewarne Manor...14  
 Singer & Pfaff...31  
 South West Estates...40  
 Spacemaster...5  
 Spann, Barbara (feet).. 32  
 St Erth & Hayle Cars...15  
 Suites & Sofas...39  
 TJ's Barbers...10  
 Wade, Neil...24  
 Window Cleaner...23  
 Winn, W.J...32  
 Worm Manure...25  
 Yoga...17

You can pick up a copy of the Pump at those advertisers marked with an \* also at Hayle Library, Hayle Day Care Centre, Community Centre, Bodriggy Health Centre, Copperhouse P.O., Martin's, St. Erth P.O., Connor Downs P.O. and many other places.



# SUITES & SOFAS



**HUGE RANGE OF STOCK FOR  
 IMMEDIATE DELIVERY**

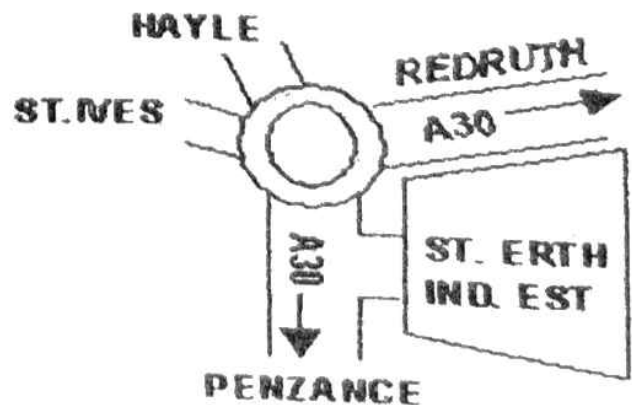
**INCLUDING CANCELLED ORDERS, FACTORY CLEARANCES  
 AND ENDS OF LINES**

**ALL READY FOR YOU TO VIEW**

FOR DETAILS OF PRESENT  
 OFFERS CALL: **07779 760686**  
 OR VISIT OUR FURNITURE WARE-  
 HOUSE 10am -4pm MON-SAT

**Unit M  
 St Erth Industrial Estate**

To view Sundays or out of  
 hours please phone



# BIGGLESTONS

TRADING IN HAYLE FOR OVER 100 YEARS

Please try us first for the best of Hardware,  
Ironmongery, Kitchenware, Paraffin  
and Garden Supplies.

01736 752219

*Summer, Autumn, Winter, Spring  
We can supply 'most everything*



**PROPERTY OWNERS!**  
Would you like to earn a  
steady monthly income?

If you are interested in letting your property,  
please call us for a free valuation or information on  
our professional lettings and management service.

Looking for rental accommodation?  
Please call us on the contact numbers below,  
or email us at [enq@southwest-estates.com](mailto:enq@southwest-estates.com).

**SOUTH WEST ESTATES**  
*Lettings & Management Agents*  
01736-793010 -or- 01736-758555  
[www.southwest-estates.com](http://www.southwest-estates.com)