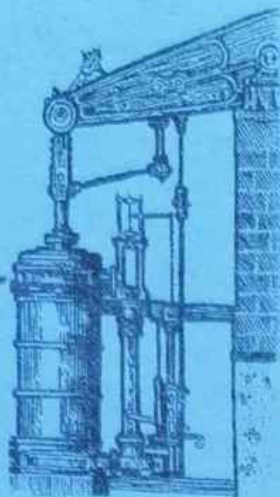


ISSUE 83

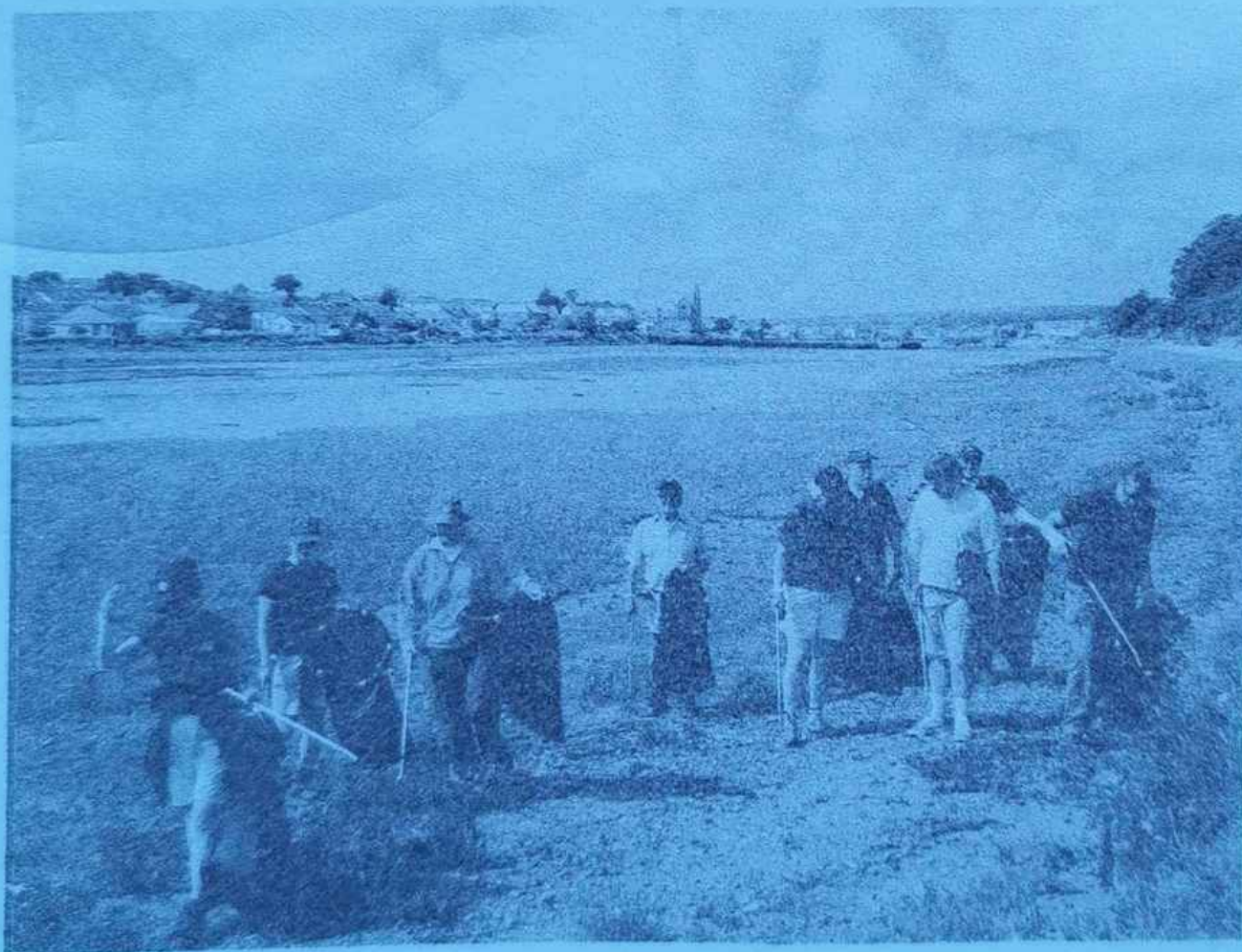
Aug/Sept

2008



# HAYLE PUMP NEWSLETTER

**Circulation 2500 FREE copy, please take one. Made possible thanks to our advertisers.**



**Volunteers help RSPB clean up Copperhouse Pool**

**Join in next litter picks on 10 August & 7 Sept**







**Kershaw Music**  
1 Turnpike Road  
Connor Downs

In "O'Dell Signs" building  
(opposite David Gratton Motors)



**\*NEW\* MUSIC SHOP**

**Tel: 01736 759 999**



- ABRSM/Trinity Guildhall Syllabus books
- Tutor Books for all Instruments
- Vocal/Choral Music
- Musical Gifts & Accessories
- Rock & Pop, Classical, Folk and more
- If it's in print we stock it!
- Mail-order available if required
- Easy to Park! (3 minutes from M&S)

**Call in and be amazed by how  
much music we have in stock!**

**[www.kershawmusic.co.uk](http://www.kershawmusic.co.uk)**



Under the guidance of one  
of our studio potters at the  
**St Ives Crafts Centre**

Halsetown TR26 3NB

*We can also fire and forward  
to your home address.*

**Tel: 01736 799185**

**Mobile: 07746 155295**

last Monday in September (29<sup>th</sup>)  
7.30pm at Hayle Rugby Club, you  
are welcome to come along.

**Sarah Turk, Secretary 752319**

## **Ocean Drive Revive**

In our last issue we printed a story  
by Jo Pollard, telling us about her  
Cream Tea and B & B business.

What we didn't print was the  
address – which is:-

**Gwithian Court, Upton Towans,  
Hayle. TR27 5BJ**

**Telephone 01736 757952**



**RSPB**

**NEWS**

At Hayle, a Cattle Egret stole the  
show from 10-12 April and was  
followed by two others. The spring  
passage of waders has been slow  
but 2 Little Ringed Plovers in April  
and a Wood Sandpiper the following  
week were notable. A Glaucous Gull  
was present on 6 April only and was  
followed the next day by a Little Gull  
but a Ring-billed stayed on for a few  
days. Terns have been more in evi-  
dence during April with good num-  
bers of Sandwich (up to 31), some  
Blacks and 2 Arctics. We also saw  
a Roseate in June. A spoonbill in  
early June was a late spring bonus.

### **Hayle Estuary Reserve News**

**People walking their dogs across  
the estuary continue to be a big  
problem for the birds on the na-  
ture reserve.** Dogs have killed sev-  
eral swans, mallard and probably  
other smaller birds which go unno-

ticed. The RSPB is very worried that dogs will chase and kill the few Shelduck chicks that are still alive. The RSPB would like to remind all dog walkers that there is no right of pedestrian access over the mud flats on the nature reserve and that people need to keep to the designated public footpaths. Jenny Parker, Warden said "Every time I patrol the estuary I have to ask dog walkers to get off the mudflats. The birds have very little chance to feed because they are always flying to get away from dogs".

The Hayle Estuary Disturbance Action Group has now installed signs at various locations around the estuary to inform people that the site is protected by law. As a result of feedback from the public some of the signs will be replaced with much bigger, easier to read signs soon. Jenny said "I hope that the signs will act as a deterrent to people who let their dogs on to the estuary but if not witnesses can contact Hayle police on 01736 751801".

Sunday Volunteer Group: Our next litter picks are **10 August and 7 Sep**. If you would like to join us contact the warden on 01736 711682.

\*\*\*\*\*

**Notice:**

**Kernow Electrical at 8 Hayle Terrace can now supply your plumbing needs as well.**

\*\*\*\*\*

**Hayle, Past & Present**

**This year's Summer Exhibition at the Foundry Gallery in Pratt's Market features paintings and**

\*\*\*\*\*  
**The Farm Shop**  
**31 Penpol Terrace**  
**Hayle**  
  
**Open 6 days a week**  
**8am - 5pm**  
  
**For all your local produce,**  
**fruit, vegetables, plants &**  
**flowers, free range eggs.**  
**Cornish potatoes.**  
  
*Now in:*  
  
**Bunched carrots, bunched**  
**beets, runner beans, peas,**  
**strawberries & raspberries**  
 \*\*\*\*\*

**drawings by various artists from over the last 200 years.**

These include a watercolour of St Erth Church painted circa 1820 by the topographical artist Frederick Stockdale, which is probably one of the oldest surviving original paintings of this area. Amongst other pictures of interest are a collection of drawings by the British artist Frank Lewis Emanuel, one of which shows Hayle Regatta in 1912, and a pair of watercolours of the harbour and power station c.1960 by the Cornish born artist James C. Middleton.

Other works are by:- Rose Hilton, David Dyer, John Miller, Andrea Stokes, Eric Ward, Ray Denton and Hayle's own Chrissie Micklethwaite.

As well as paintings there will be a selection of Hayle art copper work produced by J & F Pool between 1900 - 1930.

The exhibition will run until 16 August, Monday – Saturday, 9am – 5pm. Admission Free.

You can also view on line at;  
[www.foundrygallery.co.uk](http://www.foundrygallery.co.uk)

**THUMPER'S DEN**  
*Boarding  
for small animals*  
Contact Nina on **07967-461193**  
or **01736-753864**  
ThumpersDen@hotmail.co.uk  
Baby & young adult rabbits sometimes for sale  
We are situated at  
Connor Downs in Hayle



have a number of very fit and energetic pensioners in my groups I have become increasingly aware of the need to offer classes exclusively to those aged 50 and over. People in this age group have often told me rather shyly "I would like to do a fitness class but I don't fancy working out with all those youngsters". This is an understandable reaction, though many of these "young retired" could cope perfectly well with, for example, my Stretch and Tone class.

However, I can see that people of retirement age, or nearing that, might feel more confident and find it more fun, to work out with their own age group, following an exercise programme designed especially for them.

## *As Young as You Feel*

I have been teaching Fitness and Exercise classes in Hayle for a number of years now. Whilst I do

18 Commercial Road  
HAYLE  
TR27 4DG  
01736 753145



21 Alverton Street  
PENZANCE  
TR18 2QP  
01736 366106

Bring this  
advert  
in for  
**10%**  
off  
complete  
spectacles  
£75 and over


Excludes offers  
and promotions  
already  
discounted



I am so convinced that there is a demand in Hayle for just such classes that this Autumn I am taking myself off to Bristol to join an Extend Training Course. For over thirty years Extend has been the leader in providing expertise for fitness instructors wishing to bring the benefits of recreational exercise to older people. I know that at the Day Care Centre in Hayle there are excellent chair-based classes on offer, but my mission is to offer an opportunity for the "young retired" to lay down the foundations of fitness for later life.

If you think you might be interested in joining a class in September, please give me a call on 01736 757560, or look out for the notices I shall be putting up in September giving details of time and place.

**Sylvia Turk**



MORRAB LIBRARY  
- Penzance -

**ANNUAL BOOK FAIR  
& COLLECTORS' POSTCARDS**

*New, used & rare books  
Admission by donation*

**Saturday, 27<sup>th</sup> September 2008**  
10am to 4pm  
St John's Hall, Penzance

## THE COUNTRY LARDER

The Country Larder will be opening its door at Unit 3 in Pratts Market on 9 August. Its aim is to use locally sourced produce of the season, and create some interesting and unusual combinations as well as incorporating traditional old favourites. All of the preserves are home made and free from artificial colourings and preservatives.

## GWITHIAN HOLIDAY SUITES

Visit Cornwall/English Tourist  
Board Self Catering **3 Stars**

### 4 Self Catering Suites.

**All 4 Suites** with Bath/Shower/wc fully equipped Kitchen, Dining area and Lounge with comfortable seating, Colour Tv/Dvd etc.

Linen, Towels, Electricity and Heating are included in tariff.

Garden with Barbeque.

Parking space. Access at all times.

Breakfast available. Credit Cards accepted. Open all year.

#### Suite 1

Bedroom with Double bed and single bed.

#### Suite 2

2 Bedrooms (Double and Double and Single).

#### Suite 3

2 Bedrooms (Double Bed and Twin beds).

#### Suite 4

Double bedroom.

**Surfing Tuition, Board & Wet-suit** hire available from a **Top Level England Surfing Coach** used by several local schools.

#### **Telephone:**

01736 756560 / 755493

#### **Website:**

[www.gwithianholidays.com](http://www.gwithianholidays.com)

#### **email:**

[trevorgreenaway@hotmail.com](mailto:trevorgreenaway@hotmail.com)

<b>R</b>	<b>ROY</b>
<b>H</b>	<b>HAYES</b>
<b>G</b>	<b>GLASS</b>
<p>For all your glass &amp; glazing needs including greenhouse glass &amp; mirrors</p> <p>Unit 2, Prykernow Penpol Avenue Hayle TR27 4NQ <b>Tel/Fax: 01736-754023</b> <b>Mobile: 07880-530795</b></p>	

Just to get your mouth watering – how about lavender or chilli jelly? Great with feta cheese or to use as a barbeque glaze! Then there's spicy pear chutney or red onion marmalade; both go brilliantly with cold meats or cheeses. For those with a sweet tooth – try the various seasonal jams available.

Then how about making your own beer or wine? There will be beer and wine kits available and as the season progresses, hedgerow fruits as well as ideas for their use and, of course, the equipment with which to get started. So why not pop in and have a look?

Open Monday, Tuesday, Thursday & Friday 9.30 – 4.30  
Wednesday & Saturday 9.00- 1.00  
Phone **Janet Carter 0787 029 5031** for more information.

## Hayle Ladies Choir

I have had an encouraging response to my article in the last edition of the Pump. The choir will start on Thursday 11 September, and we will meet at the Sunday School room of Hayle Methodist Church from 7.30 – 9.30pm.

I anticipate that we will meet weekly from September to April (or Easter).

Please ring me or Una if you want any more information; otherwise just come to the opening evening.

**Ann Birch 01736 752335**

**Una Skellington 01736 755367**

## Clinical Hypnotherapy

**Professional Hypnotherapy Consultant**

*(The National Guild of Hypnotists)*

**All Dr's / Counsellors &**

**Hypnotherapists are not the same.**

**Call now & change your life.**

*£80 for a 1 1/2 Hour Session*

**Tel: Hayle 01736 757081**

## Millpond Update

To paraphrase that famous quotation from the Falkland's War, "I counted them all out and I counted most of them in". Since the middle of June our drakes have been returning to the ponds. The young non-breeding drakes were the first to call it a day and came home, followed by some of their equally unsuccessful elders, still bragging no doubt about what might have been had luck with the ladies been with them!

As soon as they arrived for some well-earned rest and recuperation, they started their annual moult or eclipse and when their feathers began to fall it became very obvious how very many true mallards we do not have! Our happy band of tatty scruffs are a load of impostors and we seem to have a pond populated by a flock of "Heinzers" of indeterminate origins! Not that we mind, because no matter what they really are, they are still special to their friends. Sixtyseven ducks have now arrived home at the last count.

Offspring, however, appear to be in very short supply. We rejoiced at every little brood of ducklings to appear on the pond or the Angarrack Canal, only to disappear about as quickly, predated upon by the usual suspects.

Sadly, despite of all their assurances, the Environment Agency cut the vegetation down along the Loggan's Leat and the Canal. Without the protective areas of cover our ducklings were mobile snacks again for the rooks and our only hope is that some do make it back to the ponds at the end of the season. In the meantime I have passed on everyone's complaints to the RSPB and Natural England who will talk to the E.A. again about their policy of clearing banks during the breeding season.

On a happier note we do have two ducklings on the Millponds. "Bronie's Babes" are about 8 weeks old and this very attractive pair is from our Welsh Harlequins Aled and Bronwen.

For those of you who have been

## J C ELECTRICAL

Your complete 24 hour Electrical Service

City & Guilds Qualified

Tests to BS7671

*Rewires, New Build, Lighting, Extra Sockets,  
Showers, Heating*

Prompt Reliable Service  
All Work Guaranteed

Free Estimates  
Part P registered

Tel: 01736 754543  
Mobile: 07739 577 549



# Guy Barker Hall

Property maintenance  
and chimney services

HETAS registered

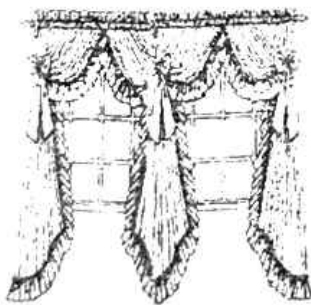
Stove installation, chimney liners, pots and cowlings,  
plastering, carpentry, basic plumbing, general building.  
Always tidy, friendly and reliable. Any job considered.

Call for a free quote:  
**phone 01209 712583**  
**mobile 07754 671336**

Email: [barkerhall@hotmail.co.uk](mailto:barkerhall@hotmail.co.uk)

## HOOKED ON CURTAINS

*The Curtain Store at Your Door  
for Made-to-Measure  
Curtains & Blinds*



Choose in your own home  
from over 1,000 fabrics &  
a variety of heading styles.  
Free, no-obligation quotation  
& measuring service for curtains,  
vertical, Roman, Venetian  
& roller blinds.

Phone Gill Wright on  
**01736-796657** or **07725-814144.**

walking along the Ropewalk and suddenly had their peaceful reverie shattered by loud whistles followed by maniacal laughter, you have encountered the Jays. A small group of these colourful birds seem to have moved onto Duck Island.

The play area in the Gardens has been completed and three new seats installed to round off the renovations. The gardens were looking good for the annual visit by the judges for S.W. in Bloom. It's always a good day for the children of Penpol School to show off their creative skills with their two flowerbeds and their photographic portfolio.

We do not seem to have suffered lasting damage from the diesel spill and the weed appears to be growing well on both ponds which bodes well for their future health and for that of their residents. We were lucky this time; let's hope we never have to test that luck again.

**Georgina Schofield,  
Volunteer Wildlife Warden.**

**St. Erth & Hayle  
Cars**

**0770-60-40400**

TALK TO THE DRIVER NOT AN OFFICE

[www.sterthandhaylecars.co.uk](http://www.sterthandhaylecars.co.uk)

**TAXIS**

## GODREY SINGERS

**A presentation concert was given by the Godrevy Singers and David Prowse on June 27. A magnificent £2,000 was raised for the Precious Lives Appeal, and £578.83**

was presented to the Hayle Day Care Centre.

I would like to take this opportunity to thank everybody who made a donation; without your generosity it would not have been possible.

A very big thank you from the Godrevy Singers and David Prowse.

*Hamilton Hawkins*

## **SINGER & PFAFF SEWING CENTRE**

*Authorised Singer Service Centre for Cornwall*

*All makes serviced*

**11 ST. JOHN STREET, TRURO**

**01872 225168**

*Mr & Mrs D.M. Girling*

## ***KIND OF CORNISH***

“Cornish Lads” is a musical drama, telling of the rise and fall of Cornish mining, focusing on the men and women who worked in the industry. It is sub-titled ‘Songs from a Granite Landscape’, and was written by the impressive collective Cornish Songwriters, which toured the show throughout Cornwall earlier this year. (A couple of the Pump staff caught the show at Leedstown, and found it very good indeed.) The talented performers in the show, who all appear on this CD, were Mike O’Connor, Di Franklin, Jon Heslop, Kevin Burrow, Ron Openshaw, Lucy Burrow and Roger Bryant.

The beautifully-written songs are sung solo in folk style, with accom-

## **Fernleigh BED & BREAKFAST**

En-suite, Colour TV,  
Coffee & Tea making  
facilities in all rooms.

**NON SMOKING**

**26 Commercial Road**

**HAYLE**

**Cornwall**

**TR27 4DG**

**01736 752166**

[mikelynreffold@fernleigh.fsbusiness.co.uk](mailto:mikelynreffold@fernleigh.fsbusiness.co.uk)

Mike & Lyn Reffold

panying ensemble choruses and excellent accordion and fiddle accompaniment. All the soloists are excellent and the songs are performed very movingly.

The mining landscape of Cornwall has been identified as a World Heritage Landscape, and this organisation commissioned the show and provided vital start-up funding. Hopefully ‘Cornish Lads’ will tour again and those who missed this most touching tribute to a former Cornish way of life will get their chance to catch up with the show. In the meantime, this CD, illustrating as it does so expertly the twin Cornish skills of mining and singing, is a wonderful memento. (66 mins.)

The CD costs £12, and is available from Hobgoblin Music, Pol-



Want to play music?  
You're never too old!

*I'm a coach, former session musician (guitar, bass, harmonica), and a Registered Guitar Tutor. With over 30 years' experience, I specialise in helping you learn in your own way, to read music or play by ear. I teach acoustic and electric guitar, bass guitar and blues harmonica.*

Learn music the fun way  
with Graham Smith.

**Call me on 01736-740141**

*(based near Penzance)*

**graham@calmtime.com**

**www.calmtime.co.uk**



**CLIFFORDS**  
PLUMBING & HEATING



BOILER CHANGES TO  
FULL CENTRAL HEATING

DRIPPING TAPS TO  
COMPLETE BATHROOMS

FULLY QUALIFIED AND  
WATER INDUSTRY APPROVED

CLEAN AND FRIENDLY SERVICE

FREE QUOTATIONS

 **01736 755170**

 **07761 938183**

morla Walk, Wadebridge PL27 7SF,  
tel. 01208 812230,  
[www.hobgoblin.com](http://www.hobgoblin.com).

Any artists or musical groups who are Cornish or resident in Cornwall who have CDs for sale are invited to submit them for review in the Hayle Pump. We have no restrictions regarding the CD's style, we feature anything from rock to classical, bands, choirs, spoken word, you name it. Contact details for Pump readers wishing to buy your CD must be stated, for example a website and/or telephone number, and the price must be quoted. As with our written articles, we reserve the right to refuse items of an offensive or otherwise questionable nature.

CDs for review should be sent or delivered to the Hayle Pump in Pratt's Market. (See address on Page 2,) It's a free ad for your work, so keep them coming!

**Goudie Charles**

## THE ROTARY CLUB OF HAYLE WELCOMES NEW PRESIDENT

**Rtn George Stone PHF, who has served the Club previously in this position twice before, takes up the reins for a third time from outgoing President Rtn David Jones who has guided the club over the last twelve months with scholarly care.**

Rtn George who was awarded his PHF for outstanding service to Rotary and the community over many years is again willing to lead the active Rotary club for a further period. He has indicated that as a priority he wants the club to look at service

within the community. The regular fund raising activities are always necessary, but the fellowship of members and their actions to serve within the community is very important. The help that is given by members to other organisations and associations is essential in making the town of Hayle and District a very special community. Those who serve as governors of local schools, who are members of local churches, who act as treasurers, chairmen, and committee members of numerous charities and organisations, embody the objects of Rotary 'Service above Self'.

Rtn George Stone looks forward to a very active year as President, and with a new, younger member joining the club at the start of his year, expectations are very high.

The Club would like to say thank you to Rtn David Jones for his year of office, and all members will be looking to support the incoming president fully during the coming year.

*Rtn David W Raymer*

## Passmore Edwards Institute Auction

**On September 27 there will be an auction at the Institute to help fund its 10 year renovation plan.**

Donations of items will be gratefully accepted.

Viewing will start at 10am and the auction will take place at 2pm. Bring your friends, get a bargain and help Hayle's Village Hall.

*Call 01736 756055*

# COLIN'S MARKET GARDEN



THE SIGN OF  
FRESH  
FRUIT & VEG

find us at  
THE FRONT  
PRATT'S MARKET  
FOUNDRY SQUARE  
JUST  
LOOK  
FOR THE  
FLAGS!!

IT'S THOSE SALAD DAYS  
TRY OUR CORNISH SALAD TOMATOES

OR THE LOCALLY GROWN CHERRY TOMS

WITH OUR VARIETIES OF CORNISH LETTUCE  
PLUS OTHER CORNISH SEASONAL PRODUCE  
AVAILABLE AT

**COLINS MARKET GARDEN**

THAT WILL CUT DOWN YOUR FOOD MILES



AND HELP YOU ON YOUR WAY TO 5 A DAY



## HAYLE TWINNING ASSOCIATION

You have probably noticed on the signs welcoming visitors to Hayle that we are twinned with Pordic, on the Cote d'Armor in Brittany. Since 1997 the twinning with our French counterparts has provided the opportunity to share aspects of our cultures and everyday life with the inhabitants of our twin town.

Annual membership costs £5 for a single member, £7.50 for a couple or £10 for a family. We meet at the John Harvey House in Foundry Square at 7pm on the second Monday of each month.

We organise a series of events

over the year, which gives us the chance to socialise as well as the opportunity to co-operate with other local groups. Our activities range from safari suppers to quiz nights, from bazaars to treasure hunts, and they provide the funds to finance the events that we organise for our guests during their time in Hayle.

Each year we have approximately fifty visitors from France for a long weekend, usually in May. Generally, we provide the opportunity for the whole group to spend one day of the weekend together on a trip to somewhere such as Falmouth and the Maritime Museum or the Eden Project and Charlestown. This year we spent our day around the Lizard to show them the scenery, watching art and chocolate making demonstrations at Mullion as well as sam-

## Rosewarne Manor



- ❖ *Beautifully refurbished*
- ❖ *Open for lunch & evening meals*
- ❖ *Superb Sunday roasts served all day*
- ❖ *Bar & restaurant overlooking landscaped gardens*
- ❖ *Patio & al fresco dining area*
- ❖ *Families very welcome*
- ❖ *Supporting local farmers - we use fresh local produce*
- ❖ *Great venue for special occasions, group bookings, receptions & business events*

**Telephone 01209 610414**

**Gwinear Road, Connor Downs, Nr. Hayle TR27 5JQ**

**[www.rosewarnemanor.co.uk](http://www.rosewarnemanor.co.uk)**

pling cider and liqueurs at the Cider Barn. We then had a pasty and ice cream lunch at Roskilly's.

Every year we have a meal followed by a dance, and this year we had a brilliant evening at West Cornwall Golf Club at Lelant where we enjoyed an impressive meal, delightfully presented and then we danced to live music provided by a local group.

Our return trip to France is usually in September. Ideally our visit should be timed to consider the needs of members in employment, the constraints associated with the school holidays and of course, when it is convenient for the French to host- not to mention the ferry timetable. Maybe the establishment of a Newquay – St Brieuc flight schedule will provide a viable alternative and greater flexibility to increase our options.

While in Pordic, we enjoy a programme similar to our own that our hosts have arranged for us. The trips have ranged from a tour of the medieval cathedral town of Dinan to marvelling at the modern technology of the electricity-generating barrage of the River Rance at St Malo. The much-enjoyed meals have also given us the chance to sample traditional music and dance.

The family days have included delights such as walking the local coastal path (which, dare I say, is as beautiful as ours) visiting the Pink Granite Coast and a trip to the Scilly-like Isle of Brehat.

Many of the French speak excellent English but the relaxed social atmosphere provides an ideal op-



## O'DELL SIGNS OF ALL TYPES

Perspex fabrication  
and Boat Windows

Perspex lettering,  
Plastic, Engraving,  
Magnetic, Posters,  
Illuminated signs  
Signwriting,

VINYL LETTERING  
for Vehicles & Signs

**HAYLE 01736 753656**  
1, Turnpike Road, Connor Downs

portunity to try to improve our own French conversational skills.

We have found our twins incredibly hospitable but they are equally complimentary about us and I'm sure that the association does a great deal towards maintaining the "Entente Cordiale".

If you are interested, come along or give us a call.

### *Forthcoming events include:*

**August 8.....**Beetle Drive/ Crepe evening Hayle Day Care Centre – reservation recommended

**August 23.....**Beach Barbecue

**September 14....** Afternoon Cream Tea at a house on King George V Memorial Walk

**October 10....** Quiz Night with food at Hayle Rugby Club

**November 22...**Christmas Fayre 9 – 1pm Hayle Day Care Centre

**November 29....**Exeter shopping trip.

**Mike Stuckey 01736 753755**

# HAYLE CYCLES

MOUNTAIN-ROAD-BMX  
SPECIALIST

**\*Bicycle Sales and Repairs\***

*Bicycle Hire*  
**£10 per day**  
**£50 per week**



36 Penpol Terrace  
Hayle, Cornwall  
TR27 4BQ

**Tel: 01736 753825**

**DO YOU NEED  
A REGULAR  
WINDOW  
CLEANER?**



**David Morris Window  
Cleaning**

*We are already well established  
in your area ( 8 years)*

*High reach cleaning system.*

**Phone Dave for a free  
quote on  
01736 756394**

## PHILLACK CHURCH HALL

This notice is to ALL of you interested in the hall.

We are very keen to receive CONSTRUCTIVE IDEAS about the following matters relating to the hall -  
**What should be the future use of the hall?**

**What alterations ought to be made ?**

**What changes in layout might be made?**

**What facilities ought it to have?**

If YOU have any constructive and positive ideas about the above questions please write to one of the following addresses by September 1st:-

Cathy Williams,  
5, Copper Terrace, Hayle  
TR27 4EB.

or

Angela Berry,  
17, Fore Street, Hayle  
TR27 4DX.

[christopher.berry1@btinternet.com](mailto:christopher.berry1@btinternet.com)

or

Gill Hollyn  
[gng@cormelian.com](mailto:gng@cormelian.com)

**A new stylish design  
studio in  
Pratt's Market**

carla jennings jewellery has recently taken over a studio space upstairs in the Foundry Gallery.

Here Carla designs and makes contemporary silver and gemstone jewellery. In this age of mass-production she makes it her priority to create individual elegant and

unique pieces for her customers every time, and to make these beautiful items affordable.

You can now visit Carla in her studio and discuss your ideas for your own piece of jewellery that she will craft especially for you.

She has joined forces with another Cornish jeweller, Lucy Kemp, to bring a fantastic range of affordable, designer items to your homes.

For full details of booking a jewellery party and to find out how you can choose your favourite piece for FREE, please visit Carla's website at [www.carlajenningsjewellery.co.uk](http://www.carlajenningsjewellery.co.uk)

## FOOTSTEPS

5 Penpol Terrace, Hayle

01736-757735



Your friendly family footwear shop.  
Summer styles still available!

## THE VIEW FROM THE STEEPLE

All good things must come to an end so they say, but with this concert season we definitely saved the best till last.

Newlyn Male Voice choir may be one of the smaller choirs but they make a very sweet sound. Under the musical direction of St. Elwyn's resident organist, David Woodger, they entertained us royally. The very fine solo tenor, Mark Williams, and Cornish poet, David Prowse (whose

## PENPOL GARAGE IN TUNE WITH TECHNOLOGY

**ALL MAKES OF VEHICLES  
REPAIRED & SERVICED**

.....

**AIR CON RE-GAS  
£ 40 + VAT**

.....

**ENGINE MAN.ABS.AIRBAG  
DIAGNOSTICS  
FREE PRE-MOT CHECK**

.....

CHECK US OUT

[www.GoodGarageScheme.com](http://www.GoodGarageScheme.com)

TEL:01736 757011

MOB: 07921 218448

gentle wit has often raised a chuckle or two) made the evening complete, leaving us with one more concert to go.

Our 10<sup>th</sup> Winter Concert Season came to a truly memorable climax with our old friends the City of Truro Male Choir. This Choir has supported the Winter Concerts from the beginning and always gives a great performance. Soloists were members of the choir and included their musical director, Paul Triggs, who sang "Solitaire" to a standing ovation. After another enjoyable evening they left us looking forward to the next season in 2009.

The damage to my belfry left our poor organ in a terrible state. Praze Hayle choir very kindly lent us their

spare piano organ until we either repair or replace our own. During the next three weeks St Elwyn's will be trying out two possible replacements, one in time for the Civic Service held on July 27 and the second organ can be heard in concert with the Newlyn Male Choir on 10 August at 7.30pm. Admission is free, but a collection will be taken for Hayle Day Care Centre. Please come along and join us for an evening of music and song.

Finally before I fly away to try and find the summer, our favourite artist, Jim Whitlock, opened his new exhibition on 26 July. It runs until 10 August and admission is free, so do come along and enjoy the paintings.

Now I know that I put the summer down somewhere, but I really can't think what I did with it – must be one of those geriatric moments!

See you again soon folks, I hope!  
*The Sanctuary Sparrow*

## H.D. and me

In July I was rattling a collection tin at the entrance to the Co-op in Hayle, on behalf of the Huntington's Disease Association. Once again the generous people of Hayle contributed a wonderful £309.00

Huntington's is a terrible genetic disease that leads to a gradual deterioration of a person's capabilities.

The Cornwall branch of the H.D. Association plays a vital role in ad-

# PHILP'S

FAMOUS PASTIES

EST



1958

\*BAKING 7 DAYS A WEEK\*

FOR THE GREAT TASTE OF  
CORNWALL'S  
PREMIER PASTY MAKERS  
WITH OVER 50 YEARS  
EXPERIENCE,  
VISIT US NOW  
AT OUR SHOPS AT:



1 East Quay,  
Hayle  
TR27 4BJ  
01736 755661

1 Foundry Hill  
Hayle  
TR27 4HL  
01736 753302

Market Place  
Marazion  
TR17 0AR  
01736-710332

The Square  
Praze an Beeble  
TR14 0JR  
01209 831360

vising, supporting and befriending those in need. To have HD in the family is a traumatic experience; if you wish to talk things through with others who understand and can relate to your feelings, please get in touch.

Locally:

Moira Tangye 01637 874151

Daphne Jones 01208 73723

Regional Care Advisor

Paula Haynes-Perry 01822 835974

Nationally

H.D.Association

Norton Street, Liverpool

L3 8LR

[www.hda.org.uk](http://www.hda.org.uk)

or you can always talk to me:

**Sarah Turk 01736 752319**

## **Hoyle Penwith U3A**

The Hoyle Penwith U3A (University of the Third Age) meets every other Thursday for a Social Meeting at the Hoyle Day Care Centre, Commercial Road 2pm – 4pm. There are no meetings in August. The programme after that is:

**4 September** . Reminiscence Projects by John Pollard.

**18 September**. The Last Czar by Tess Hulland

**2 October**. The work of the Cornwall Blind Association by Martin Pallett

Membership is open to anyone who is retired or not in full-time employment, and there is no age limit.

This is not, as the title might imply, an academic organisation, although those who wish to can join one or more of the interest groups that are organised by, and affiliated to, the

## **IN HOME COMPUTER REPAIR**



### **-Solutions**

In Home & Small Business Computer Support

- **No Fix - No Fee**
- **No Callout Charge**
- **Fast, Friendly, Local Service**

**Tel: 01736 757580**

U3A. These are Art, Current Affairs, French, History, Luncheon Club, Music, Outings, Play Reading, Swimming, and Writing.

Annual fees are £6 per member, or £10 for two members residing at the same address, plus £1 for every group meeting, paid on the day of attendance.

Officers:

Chairman David Hocking: 753585

Vice Chairman Bob Mims: 757910

Sec. Margaret Addiscott: 752137

Treasurer: Eileen Lewis: 752010

Prog. Sec. Margaret Bilkey: 710724

\*\*\*\*\*

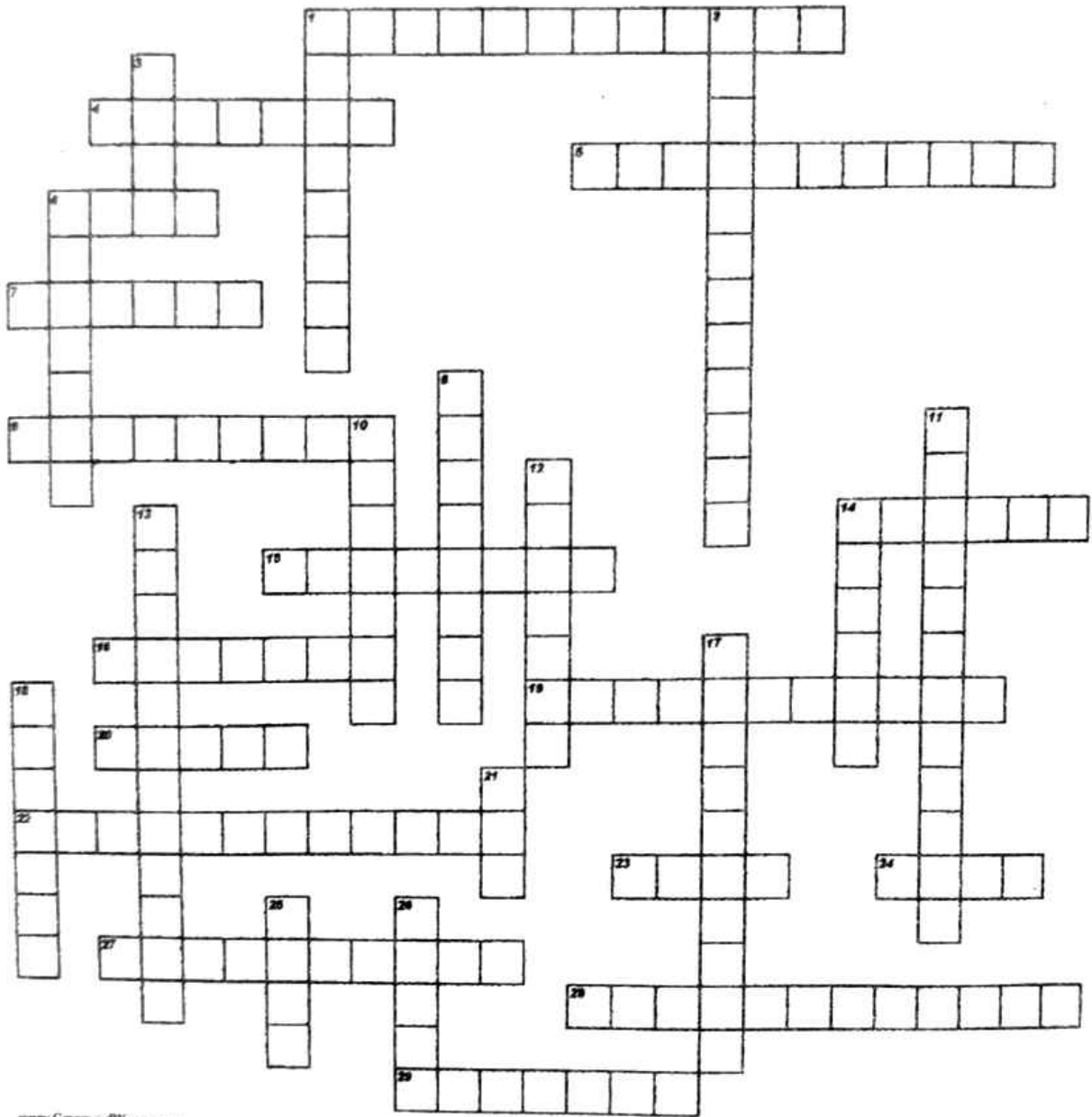
How can I tell if I'm losing my memory?

*I explained that to you yesterday.*

\*\*\*\*\*

# **SALT BAR'S HAYLE CROSSWORD**

*If you complete it (or close enough) come to SALT for a free coffee. Good luck!*



www.CrosswordWizards.com

## **ACROSS**

- 1 a stroll down memory lane
- 4 common airborne reason to wash car
- 5 Built the White Hart Hotel
- 6 often associated with a marsh
- 7 A shop to raise the blood pressure
- 9 Somewhere to get lost in
- 14 Twinned with Hayle
- 15 The road with a reason
- 16 place to come and go - more than than now
- 19 a dark golden dwelling
- 20 German and nutritious
- 22 was once the most energetic place in town
- 23 Hayle's number one rag
- 24 all the flavours under the sun - yum yum
- 27 home of le Macus Maximus
- 28 sounds like you can buy idiots there!
- 29 not one but two place to stash your cash
- 6 Just got new umbrellas.....
- 8 to keep the boats at bay
- 10 twitcher's paradise
- 11 where all the birds hang out
- 12 locomotive flyover
- 13 unlock explosively
- 14 Sounds like a very large writing instrument
- 17 the 'devil's gob'
- 18 round and round, very low to the ground
- 21 Dutch investors - maybe!
- 25 where the skateboarders hang out
- 26 somewhere with a great view which may not seem what it is

## **DOWN**

- 1 where the birds are alight
- 2 Local celebrity who lives in a pink house
- 3 The old spelling.....

## Letters.....

### Hayle Railway Station

Issue 82- Letter on subject of Hayle Railway Station; the answer is that when the old Hayle Station was in use, neither the present station, nor the viaduct was in existence.

The original Hayle Railway, built in the 1830s, ran from Hayle Foundry to Tresavean mine, near Redruth.

There were two steep inclines, worked by stationary engines- one at Angarrack; the other at Penponds.

In the 1840s the Hayle Railway was bought out by the West Cornwall Railway with the intention to extend westwards to Penzance and eastward to Truro, but Parliament granted no Act, as they did not think much of the Hayle Railway's two steep inclines!

Accordingly, the W.C.R. built viaducts to replace the inclines, plus another at Hayle Foundry. The whole line west of Angarrack was at a higher level and included the present station.

The old low level lines, serving Hayle Harbour were linked to the new station by a short, steeply graded branch (now a footpath) which crossed the main road near St. Elwyn's Church. It was in use for many years for freight only.

The old station building was put to a variety of uses, including a haven for fire-watchers in World War 2. Eventually it was demolished to improve driving conditions through Foundry Square in the early post-war years.

**M.J. Hunt**

### Hayle Railway Station

Re. the enquiry in the last edition of the Pump; the "ticket office" referred to is, in fact, the station building of the Hayle Railway.

This railway ran from Foundry Square along Penpol Terrace, over a bridge at Copperhouse Sluice (where the swimming pool is now), along what is now King George V Memorial Walk and then across the main road near to where the Penmare Hotel used to be. It continued to Angarrack and thence to Camborne and Redruth.

The viaduct was constructed after the West Cornwall Railway took over in 1846, so in fact no-one would ever have had to negotiate a ladder laden with luggage!

The present station was built at the top of the hill and opened in February 1852. Passengers would have had to go up the hill to buy their tickets (if they had enough breath left to speak).

The original station became an Institute some time after 1860 that. I'm not sure what sort it was and it was demolished in 1950. The rails were left for Harvey and Company to use - these were removed at some time in the 1960s.

**R.A.Ryan**

### Thank you from the N.C.I.

I am writing on behalf of the St. Ives Station of the National Coastwatch Institution to thank the people of Hayle, and the visitors to the town, whose generosity at our collection outside the Co-operative Store en-

abled us to raise in excess of £500 for our funds.

The N.C.I. is funded solely by donations; all equipment, station costs, etc. are purchased from our funds and all watchkeepers are volunteers, giving freely of their time and buying their own uniforms for example. Our annual running costs are around £4,000 with additional funds required to replace and update our equipment. Currently we have a team of over 40 watchkeepers, all from differing backgrounds, and your assistance has helped considerably towards our funding.

Our station is manned 365 days a year, keeping watch over the Hayle estuary, the various beaches and St Ives Bay generally during all daylight hours. Thankfully there are few seri-

ous incidents but we are in constant contact with Falmouth Maritime and Coastguard Agency. In the event of an incident during the hours of darkness we have Emergency Response Teams who man the station within 20 minutes of a "shout".

The N.C.I. was formed in 1994, here in Cornwall, and has grown to almost 40 stations throughout England. Further stations are opened as funds and opportunities present themselves.

Once again our sincere thanks, and this is coupled with an invitation to visit our Station and see for yourselves what we do, provided that we are not too busy at the time, of course!.

**Jim Hay, N.C.I. St Ives**

## **PLANET Showrooms**

*- Great ideas for your home -*

**Kitchens** - Bespoke & Contemporary Designs

**Bathrooms** - Modern, Minimal & Traditional

**Showers & Wet Rooms** - Enclosures, Walk-Ins & more

**Natural Stone & Slate** - from around the world

**Ceramic Tiles** - direct imports from Italy & Spain

**01736 757 453**

Units K1 & G3  
St. Erth Ind Est  
Nr Hayle  
TR27 6LP



• **Hotel & Commercial Contract enquiries**  
please call 07891 235043

### **Proper job**

Knowing that the Pump likes to support new businesses setting up in Hayle, and also appreciates a 'good news' story, I am writing to recommend to your readers DARREN WELLS who has recently set up as a painter and decorator. Darren has just completed the outside painting of my house and I cannot praise too highly the work he has done. He was prompt, skilled and hard-working; he started and finished when he said he would, did a really excellent job and his quote was – by far – the best I obtained.

He is in the phone book and Thompson's directory.

**Name & address supplied.**

### **Water Voles**

In the June/July edition I read with great interest that the Voluntary Wildlife Officer had sighted water voles on both Millponds. I have lived in Millpond Avenue for 30 years and am a keen observer of wildlife and nature. I have never ever seen a water vole in the area and this must be an extremely rare and unique experience. Cornwall Wildlife Trust have no records at all of water voles existing further south west than the borders of North Devon and Somerset. They now intend to introduce water voles along the Hayle River and I am sure they would be extremely interested to receive information about these sightings.

As to the rat trap problem, last year the residents of Millpond Avenue asked Penwith DC to eradicate the brown rats infesting the pond

.....  
Would you like your hair done in the comfort of your own home?

Call local fully qualified hairdresser

## **Katz Hair Design**

– Competitive prices –  
Special rates for pensioners

Call Kat on 07799 815606  
or 01736 756250

Available daytime,  
evenings & weekends

## **LINDSAY'S DOG GROOMING**

*Dog grooming for all sizes,  
breeds & coats.  
Specialising in Poodles.*



For more information,  
contact Lindsay on  
**01736 753864 -or- 07792 849240**

.....  
*Situated at Connor Downs in Hayle*      *Local collection & delivery*

edges. The rats were being very well fed by people feeding ducks, strewing bread and grain all over the road and on the grass verges. The rats were crossing over the road into gardens, and into the grounds of the residential home and it would not have been long before they entered our houses as they have done in the past. A lot of small children are brought to feed the ducks; brown rats can carry disease harmful to vulnerable humans, and they are still around.

**G. Bromley**

\*\*\*\*\*  
 Do you go from yoga class to yoga class, constantly seeking greener postures?  
 \*\*\*\*\*



## Council Corner

### **Have your say - Hayle Harbour Planning Application**

The Town Council has recently resolved to hold a Special Meeting on the fourth Thursday of every month for the sole purpose of considering the Hayle Harbour application, until it is finally determined by Penwith District Council. These meetings, like all others, are open to the public and there will be opportunity for you to comment and/or raise questions on this subject. The meetings will start at 7.30 pm at Hayle Community Centre and will be attended by a Planning Officer from Penwith District Council. We will welcome your views and input – this is your



# NEIL WADE

**MOTOR ENGINEER  
 CENTRAL GARAGE**

**10A HAYLE TERRACE, HAYLE**



\*\*\*\*\*  
**MOT CAR & MOTORCYCLE  
 TESTING CENTRE**

**DIESELS & CATALYSTS TESTED\*SERVICING\*REPAIRS\*  
 WHEEL BALANCING\*EXHAUSTS\*TRACKING\*  
 TYRES\*BATTERIES\***

**PROVIDING SERVICING & REPAIRS TO ALL MAKES OF VEHICLE**

**TEL 01736 756512      MOB 07990 981546  
 HOME 01209 610651**

chance to have your say.

**Meeting dates – 28 August, 25 September, 23 October and 27 November 2008.**

The plans are available for examination at the Planning Department at Penwith District Council and also at the Town Clerk's office. Details can also be viewed and/or downloaded from the Town Council's website: -

[www.hayletowncouncil.net](http://www.hayletowncouncil.net).

### **August - Office Opening Hours & Meetings**

The Town Council has successfully relocated to Hayle Community Centre. The move went without a hitch and Councillors and staff alike are happy with the new premises.

Traditionally, the Council goes into recess for the month of August: meetings and business are usually postponed until September. However, this month there will be two meetings (only). The first will be on Thursday 21 August when planning applications will be considered (all representations must be received in written form prior to the meeting as there is no public participation at this meeting) and the second will be on Thursday 28 August and will deal with the proposed harbour development, as described above.

Despite the August recess and reduced meetings, the offices will remain open to the public from 9.30am – 12.30 pm, Monday to Friday and it will be business as usual.

If you have concerns please do not hesitate to contact us, details below.

### **Sponsored Walk**

Exact details have yet to be finalised but a sponsored walk will take place

IMS



## **INTERNATIONAL MUSICIANS SEMINAR**

**PRUSSIA COVE**

***Open Chamber Music***

***Concerts – September 2008***

Friday 12<sup>th</sup> – 7.30pm, *St Gluvias, Penryn*

Saturday 13<sup>th</sup> – 7.30pm, *St Martin & St Meriadoc Church, Camborne*

Sunday 14<sup>th</sup> – 2.30pm, *St Erth Church*

Friday 19<sup>th</sup> – 7.30pm, *Marazion Comm Centre*

Saturday 20<sup>th</sup> – 7.30pm, *St Buryan Church*

Sunday 21<sup>st</sup> – 2.30pm, *St Michael's Mount*

Friday 26<sup>th</sup> – 7.30pm, *St Ia Church, St Ives*

Saturday 27<sup>th</sup> – 7.30pm, *St Pol de Leon Church, Paul*

Sunday 28<sup>th</sup> – 2.30pm, *St John's Church, Lemon Street, Truro*

**For tickets, call 01736-731688**

*(after 1<sup>st</sup> September)*

[www.i-m-s.org.uk/concerts](http://www.i-m-s.org.uk/concerts)

on Sunday 7 September 2008, so please keep your diaries free! Councillor Paul Birch, Ex-Mayor, and the current Mayor, Councillor John Coombe have agreed to resurrect the Mayor's Annual Walk and, on this occasion, to share the money raised between their chosen local charities, St Julia's Hospice and Children's Hospice South West.

Contact the Town Clerk for further details and sponsor forms.

### **Town Diary**

If you know of or are involved with organising any community events please forward all relevant details, including points of contact, to the Town Clerk so that they may be added to the calendar which may be viewed on the Town Council's website.



**David N'jie**  
*Painter & Decorator*

10 Chenhalls Close  
St Erth, Hayle (mobile) 07944 156995  
TR27 6HY (home) 01736 756288

**Hayle Open Air Swimming Pool**

We hope that August brings us better weather so please remember that the swimming pool is open to the public daily from 10am until 6pm, until Sunday 7 September 2008. It is hoped that the people of Hayle will continue to support the pool and enjoy this superb outdoor facility.

**Hayle Community Centre**

If you are planning on holding any meetings, events, classes or even parties the Community Centre has

rooms available for hire. Space is available for regular sessions or one-off bookings. Contact the Town Clerk for availability.

Further information on the above and other local issues can be obtained from the Council website.

**Hayle Town Council**  
**Hayle Community Centre**  
**58 Queensway Hayle**  
**TR27 4NX**  
**01736 755005**

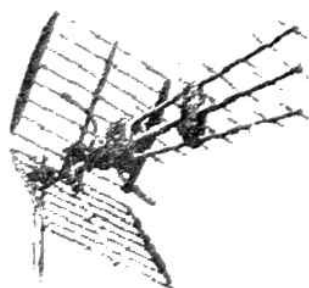
[townclerk@hayletowncouncil.net](mailto:townclerk@hayletowncouncil.net)  
[www.hayletowncouncil.net](http://www.hayletowncouncil.net)

**YOGA**

Beginner's Classes at the  
Passmore Edwards Institute  
Mondays 7-8.30pm, Tuesdays 9:30-11am  
Fridays 7-8.30pm.

New children's class, Mondays 3:30-4pm.  
Drop in £5 per class or book 10 for  
£45; children £1.50.

Contact Gwyn on 01736-791638  
Mobile 07815-945695



**ALL AERIALS**

**Digital Is Coming Are You Ready ?**

**DIGITAL TELEVISION SPECIALISTS**

**Members of the Confederation of Aerial Industries**

**DIGITAL AERIAL INSTALLATIONS & UPGRADES**

**ALL WORK GUARANTEED \* FULLY INSURED \***

**COMPETTIVE PRICES \* PROMPT RELIABLE SERVICE**

**FOR FREE FRIENDLY ADVICE CALL JONATHAN**

**01736 759225**

**Mobile 07979503907 / Email [jon@allaerials.co.uk](mailto:jon@allaerials.co.uk)**

**[www.allaerials.co.uk](http://www.allaerials.co.uk)**

## Hidden Words Quiz by Cleverclogs

This time we are looking for the  
**World's coins – old and new.**

Example: The **CROW** Never  
stopped squawking (Crown)

Answers by September 20 with a  
first prize of £20 to be spent with  
any of our advertisers, and a £5  
lucky dip drawn from all entries.

1. My chauffeur only works Monday  
to Friday.
2. It's gone off – rancid and horrible.
3. So far, things have worked out  
very well indeed.
4. Her lost wedding ring was found  
in a robin's nest.
5. I think tonight we'll have scampi,  
as Trevor really likes it.
6. I like to purchase new clothes to  
cheer myself up.
7. That will, I hope, set a new  
precedent to follow.
8. Gosh! Ill in Greenland? There's  
no N.H.S. scheme there.
9. One of Leyland's best was the  
Allegro. A tidy looking car.
10. The cucumber wants slicing up  
for sandwiches.
11. Nobody enthuses over things  
like Barbara does.
12. Who said I'm entering for this  
race? It's a good idea though.
13. Was Nick elected chairman?  
Maybe he took it for granted.
14. Wake up! There's a hippo under  
the bed! - April Fool!
15. I wish you wouldn't be so san-  
guine about these things.

## John BENNETT

Independent

Hayle Town Council

Penwith District Council



### Your representative for Hayle South Ward

The Hayle Area Plan Partnership is hosting  
detailed discussions on the Harbour plans  
and you are invited to take part. Upcoming  
meetings at the Day Care Centre at 7.30pm  
include:

Business & Enterprise – 11 Aug

Community Wellbeing – 12 Aug

Traffic & Transport – 13 Aug

Heritage, Culture & Environment – 19 Aug

Full details can be found at:

**[www.hayleareaplan.org.uk](http://www.hayleareaplan.org.uk)**

Please come and make your views heard.

**Telephone: 01736-753184**

**Email: [john.bennett@penwith.gov.uk](mailto:john.bennett@penwith.gov.uk)**

**Web site: [www.hayle.net](http://www.hayle.net)**

### Answers to quiz in last issue:

- |              |                |
|--------------|----------------|
| 1. Slate     | 9. Elvan       |
| 2. Limestone | 10. Lava       |
| 3. Gabbro    | 11. Schist     |
| 4. Lodestone | 12. Serpentine |
| 5. Flint     | 13. Amethyst   |
| 6. Diamond   | 14. Shale      |
| 7. Granite   | 15. Crystal    |
| 8. Basalt    |                |

The winner of the £20 prize was  
J. Kersey of St. Erth, and the  
winner of the £5 lucky dip was  
Mrs H Evered of Hayle.

\*\*\*\*\*

Q. What do you call a man with a  
paper bag on his head?

A *Russell*

\*\*\*\*\*

Do you have a  
local issue that a  
Councillor could  
help you solve?....



Come and meet your local  
Councillors at their

Drop-In Surgery

Every Friday at Hayle  
Children's Centre

2.00pm-3.00pm

If you wish to make an appointment,  
contact Mrs Terry Lello,  
County Councillor, on 01736-757507  
or email: [tlello@cornwall.gov.uk](mailto:tlello@cornwall.gov.uk).

## Des Button

**Springfield**  
**33 Clifton Terrace**  
**HAYLE TR27 4BP**  
**01736 753211**

**ELECTRICAL**  
**SERVICES &**  
**SUPPLIES**

**Part P**  
**Registered**



National Association of  
Professional Inspectors & Testers

## Plants on the Towans No 19 - Ragwort

Ragwort (*Jacobaea Vulgaris*), a native of Eurasia, is now flowering extensively on the Towans. In the U.K. it is one of the five plants named as an 'injurious weed' (weeds act 1959). The alkaloids present in ragwort have an injurious effect on the liver of horses and cattle: this is especially the case if it is dried and gets into the hay. However sheep and goats are said to benefit from eating it as it will kill worms in their guts.

I think all children are fascinated by those hundreds of black and yellow striped caterpillars that later become the black and red cinnabar moth. Both are distasteful to predators because of the absorption of the alkaloids present in ragwort. At least 30 species of invertebrate are entirely dependent (some of them rare and declining) on ragwort as a food source, and so on up the food chain.

From medieval times to mid 20<sup>th</sup> century ragwort was used for inflammation of the eyes, sore and cancerous ulcers, rheumatism, sciatica and gout. According to some, it will relieve the pain of bee stings. Application should be outward only, never internally and under professional supervision.

Some of the alkaloids present which are known to reduce cell division are being researched in the hope that they may be used to arrest cell growth in cancer.

Donald Macalastair of Druim-a-Ghinwir on the Isle of Arran told a story of the fairies journeying to Ireland. The ragwort was their trans-



### Computer Repair IT

Chris Chapman Computer Technician

**\*\*No Fix/No Fee\*\***

Broadband Setup      Data Backup  
Data Transfer          New PCs Built  
Home Networking      Software Problems

01209 216884    0777 760 4354

Email [contact@computer-repairit.co.uk](mailto:contact@computer-repairit.co.uk)

[www.computer-repairit.co.uk](http://www.computer-repairit.co.uk)

**Hayle Tourist Information Centre** is based in the library and has a wide variety of information on local walks and activities. It can also help with booking accommodation, subject to a small charge.

We are also a retailer for the new **Cornwall Tourist Pass** which gives a discount on many activities and eating places (for up to five people per card) The card costs £10 and is valid for 14 days.

So come and join the library... it's **FREE**—just bring a valid proof of address and identity with you.

Contact us:

Library : (01736) 753196

Tourist Info: (01736) 754399

Email:

[hayle.library@cornwall.gov.uk](mailto:hayle.library@cornwall.gov.uk)

**Opening times:** Monday, Tuesday,  
Wednesday, Friday 9.am – 6pm  
Saturday 9.30 am – 12.30 pm  
Thurs & Sun Closed

### **Aura Photography**

*(Limited Offer)*

*Photo's from £10*

*Aura reports £20*

*Tel: 01736 757081*

## **PRAZE HAYLE MALE CHOIR**

### **Music for Summer Evenings**

The choir provided this in abundance in June and July and is scheduled to continue through August and into September. We have shared the stage with the 'top brass', defied the weather on the quay at St Ives, entertained guests and others for our sponsors at The Porthminster Hotel and performed in a concert for the greatest show in Praze for 200 years.

### **Recent Appearances**

Spring Bank Holiday was noted for its weather, mostly the rain, but for a few hours on the Sunday evening the sun shone and the choir joined Heyl Town Band at Rosewarne Manor for a Prom Concert, which included a set of the Choir's usual repertoire in the first half. Christine, accompanied by the band, sang some traditional Prom favourites. With no intentions to upstage the WI, 'Jerusalem' was sung again the following week outdoors in the courtyard for a wedding at Trevarno.

In June we completed the first two Porthminster appearances for the summer, entertained at Connor Downs School Fete and had a damp outdoor session on the quay at St Ives. At the end of June we took part in a concert at St Erth Church with the visiting Swindon Male Voice Choir. This was a roof-raising entertaining evening all round which ended after midnight with informal singing at the visitors' hotel. July was no less busy; on the 10<sup>th</sup> sharing a stage with a brass band again, this time St Keverne, at Mullion Hor-

tical Show's Cornish evening. On Sunday 13th we concluded celebration of the 200th Anniversary of Praze Fair Show with a concert at Crowan Church with guests the Richmond Singers. By the end of July we will also have taken part in an open-air fund-raising concert for Precious Lives at Townshend, along with the Matthews Family and Mary Honess, and also in the Heylfest celebrations with the Band and other choirs in a massed concert.

***Forthcoming Engagements***

**Sunday 3 August** St Bartholomew's Porthleven 7.30pm

**Sunday 10 August** 'Not Quite a Concert' with Newlyn MC, St Elwyn's— a trial of a new electronic organ 7.30pm

**Tuesday 12 August** Porthminster Hotel 9.00pm

**Sunday 17 August** Carolaire at Porthleven 7.30pm

**Saturday 30 August** Blue Anchor, Helston, Barbeque 6.30pm (8.00pm)

**Tuesday 9 September** Porthminster Hotel 9.00pm

**Sunday 21 September** Sithney Church 7.45pm

The choir is always looking for new members and in particular we would like to recruit a singer to the ranks of the choir with a good musical education and background to act as deputy to Ann Birch our Musical Director. Anyone interested please contact the Secretary Roger Evans, 01736 754681 or John Barraclough, Asst Secretary, 01209 831879, or [www.prazehaylemalechoir.co.uk](http://www.prazehaylemalechoir.co.uk)

\*\*\*\*\*

Had a ploughman's lunch the other day. He wasn't very happy.

# Country Skittles



welcomes Pump readers of all ages.

4 traditional 9-pin skittle lanes

Restaurant & snack menu available at all times

Roast lunches served all day on Sundays

Fully licensed bar

Target shooting gallery

Crazy golf

Pool Table football

Air hockey Batak

Lots of traditional board games & many other games to play.

We cater for groups large and small, and provide an ideal venue for family get-togethers, birthday parties and works outings.

To get to us, take the B3302 out of Hayle towards Helston and turn right when you see our sign just past St Erth Praze. We are about half a mile up that road.

Booking in advance is advisable at busy times.

For further information ring us on 01736 850209

# ALAN ORCHARD & SONS

APPRENTICESHIP SERVED



PROFESSIONAL TRADESMEN

CARPENTRY & JOINERY

uPVC FASCIAS

ROOFING, BUILDING,  
DECKING

KITCHEN FITTING

01736 756687

07787 148571

27 GUILDFORD ROAD  
HAYLE TR27 4PP

## MEMORIES OF HAYLE RUGBY CLUB - LAST PART

Two other players from my time were Vernon Hosking and Wilfred Orchard, a prominent front row forward.

A great deal of thanks must go to the people who ran the youth teams. Frank Johns - what a stalwart he has been to the club - Frank Mills,

Jack Cook and Bailey Hosking. Frank Johns' mother was another person who worked very hard to bring money into the club. Hayle was very lucky to have a group of good voluntary workers such as Norman Jose, an outstanding worker, Bill Rowe and his wife Philis, Mr & Mrs Crago, Mrs Winnie Bassett (what a worker she was for the club, and indeed for all sports in the town. She is still going strong) also her daughter Gill Jenkin, Mrs P Penrose, Mary & Russel Williams, Raymond Radcliffe, Frank Mills, George Glanville, Mr & Mrs Albert Pascoe, Bill Smith (who took over as secretary when David Waters retired), Reggie Hosking (who took over as secretary when I retired) and Stuart Harris who took over from Reggie as team secretary and followed in my footsteps as a member of the Cornwall County Selection Committee. There was also Mr Cane who did a tremendous amount of first aid work for the club and stood by as driver of the St Johns Ambulance at home games.

I put these names on record because as time goes by no-one will remember the effort these people put in to keep Hayle Rugby Club going in very difficult times. One of the players from that time was Paul Hurrell. Not only was he a good



**W. J. WINN**  
FUNERAL & CREMATION DIRECTOR  
PRIVATE CHAPELS OF REST  
24 HOUR SERVICE



69 FORE ST  
HAYLE TR27 4DX  
01736 752124

&

TRENWITH TERRACE  
ST IVES TR26 1QUE  
01736 793029

player but a tremendous worker for the club and is still a committee member and groundsman. Men like Paul don't come round very often. I don't think his sort of devotion to the Hayle Club will ever be seen again. I am not up to date with the players who came along after my term of office but I can mention a few for the record. If I leave anyone out you will have to excuse me as it was a long time after I retired. The Chapman brothers – David went on to play for Cornwall a great many times, David Mahoney, The Mungles brothers – Terry played for Cornwall and had two International Trials, David, Geoffrey and Ronnie all played for Cornwall, probably a record as I don't know of anywhere else in England where four brothers played for their County and if memory serves me right, their father played a game for Cornwall before the war, Paul Williams.

Other players from that period who went on to play for Cornwall were Ian Jose, Ernie Mills, David Inch, Brian Jenkin – fifty games at fly-half, Graham Watts, Farmer Hosking many times and for Cornwall and Devon Combined Fifteens against South Africa and the All Blacks. Also in the Hayle team at that time was Robby Trathen, a first class wing who should have played many games for Cornwall. Then there was Geoffrey Burgan a very polished fly-half, Roger Pascoe, Mick Pascoe, Raymond Pope, Monty Davy, Neil Irish (son of Donald ) John Bray, Vernon Hosking – a very fine hooker, Les and Brian Bray – Brian is still working for the club, painting the Club House and doing odd jobs, Morris Rothero, Peter Hosking and

# ANGOVE SPORTS

40 Fore Street  
Copperhouse  
Hayle TR27 4DX  
01736 752238

**Rackets repaired  
and restrung.**



**For all sports  
equipment,**



**clothing  
and  
fishing  
tackle**



Bobby Cook.

I would like to end by saying thank you for the mutual respect shown by the players of my period when I was their secretary and for the hundred percent effort they gave me on the field of play. They respected me for getting them a good fixture list, enabling them to play against first class teams and thus furthering their footballing careers. These things would not have been achieved without a good committee and the co-operation of my good wife who worked with me and did without my company for hundreds of hours to enable me to work for the club. I am very honoured to be a life member and wish the Club well – now and in the future.

**Ron Baumbach**

*Memo from the Pump team: we would like to thank Ron Baumbach*

# PLANTECH

THE FRIENDLY RELIABLE SERVICE

- Lawns cut and borders weeded
- Hedges trimmed
- House, garden & building waste taken
- Garden clearance work
- Gravel, sand, topsoil delivered & laid
- Garage and loft clearances
- Free no obligation quotes

(Tel) 01736 754401 / 07979546434



*for these memoirs. We have enjoyed reading about the Club and from the positive feedback, we know our readers have too.*

## P G Franklin

Chapel Hill, St Erth

General House Repairs • Property Maintenance

Garden Landscaping

**NO JOB TOO SMALL**

Telephone: 01736-757360

Mobile: 07778-739341

## CORMELIAN, THE LITTLE SHOP OF TREASURES

Why not visit Hayle's specialist BOOK, MAP, MODEL RAILWAY and DIECAST shop?

Browse through our wide selection

of CORNISH and other ANTIQUARIAN titles and maps or come and seek out your vintage models. When looking for unusual GIFTS, see our stock of STUDIO POTTERY, GLASS and EPHEMERA.

### WEEKLY CRAFT AND FLEA-MARKETS AT ST. ELWYN'S.

Every Friday 10am – 4pm. at St. Elwyn's Church Hall, Hayle there is a regular Market. There are books, cakes, cards and other craft items, CDs, fabrics, wool and haberdashery, jewellery, maps, paintings, prints, plants, wood turning and much more.

Look in for a coffee and a bacon/sausage/egg bap, or try our delicious lunches or cream teas.

### BOOK AND ANTIQUE FAIRS

Held at Carbis Bay Memorial Hall, 11am – 4pm, 2nd. Sunday of the month. *Future dates:-*

0 August, 14 Sept. 12 October.

*Why not come for lunch?* We serve tasty, reasonably priced meals, all day breakfasts and cream teas.

For all three above contact:

Gill or Graham at Cormelian, Pratt's Market, Chapel Terrace, Hayle, on 01763 755890 / 07974 000747

## Pratt's Market

A unit may be available shortly at a reasonable rent. Please contact Andrew in BK Video at the rear of the market or phone him on: 01736 755227.



## **cornish community banking**

Budget, borrow and save with your Credit Union. CCB is a form of financial co-operative wholly owned and controlled by our members. There are no outside shareholders to pay and savings invested by members are used to provide affordable loans to people within Cornwall and the Isles of Scilly. So your money could be used to help others in our community by providing fairly priced credit when they need it.

By providing this facility your savings are not at risk because we are regulated by the Financial Services Authority and every penny of our members' savings is protected by the same FSA Compensation Scheme that covers banks and building societies.

You can withdraw money from your savings by cash or cheque as and when you need it.

Our products in summary:

- Easy saving by cash, standing order or payroll deduction (where applicable)
- Young saver accounts for under 16s
- Benefit payment direct to your account.
- Loans to saving members at 1% per month (subject to approval) For example £100 repaid over 1 year would cost £106.25

## **Vanessa Page Jewellery Workshop**

Handmade Jewellery  
Silver, Gold, Platinum  
Commissions  
Re-design your old jewellery  
Pearl & stone stringing  
Wedding rings

### **Opening times**

**Tuesday-Saturday 10:00-5:00**

The Fire Engine Shed  
Foundry Farm  
Foundry Lane, Hayle  
Cornwall TR20 9LP

**Down The Lane Oposite  
Jewsons**

01736 755996

[www.vanessapage.com](http://www.vanessapage.com)

# **BARTON print**

Tel: 07799 411525  
Fax: 01736 757022

## **Quick Reliable General Printing Service**

JUST A SMALL SELECTION OF THE SERVICES WE OFFER!

- BUSINESS CARDS
- COMPLIMENT SLIPS
- NCR PADS / SETS
- LEAFLETS
- MENU'S
- NEWSLETTERS
- ENVELOPES
- LARGE FORMAT PRINTS
- LETTERHEADS
- OVERPRINTING

● RAFFLE TICKETS

● B/W COLOUR COPYING

COMPETITIVELY PRICED

1 Turnpike Road, Connor Downs

Telephone 07799 411525 01736 754220

We are in Hayle on Tuesdays between 10.00 and 12noon at the Community Centre, Queensway  
*To get your money working for you and your community contact our Penzance Office which is open from 9.00 to 1.00 Monday to Friday and 10.00 to 12.00 on Saturday. Tel: 01736 366200 or just pop in to Hayle Community Centre on a Tuesday.*

### **Past Life Regression**

*By a Professional Hypnotherapist*

*Find out who you were*

*Why you are here*

*Heal Past Life related issues*

*£80 for 1 1/2 Hours*

*Tel: 01736 757081*

## **DAFFODILS RAISE THOUSANDS FOR NURSES**

**The Great Daffodil Appeal, which is supported by *Yellow Pages*, has been another huge success.**

In Cornwall, the Isles of Scilly and the Channel Islands a total of £42,372 has been raised through collections and the sale of the daffodil buttonhole in shops and businesses. This is an amazing amount and will provide over 2,000 hours of Marie Curie Nursing Care to terminally ill patients whose choice is to spend their last days in the comfortable and familiar surroundings of their own homes supported by their families and Marie Curie Nurses.



# **BIGGLESTONS**

**TRADING IN HAYLE FOR OVER 100 YEARS**

**Please try us first for the best of Hardware,  
Ironmongery, Kitchenware, Paraffin  
and Garden Supplies.**

**01736 752219**

*Summer, Autumn, Winter, Spring  
We can supply 'most everything*

As Charity of the Year, collections were held at Tesco stores throughout the UK and the total raised has beaten any other charity collection to date and has raised £529,000, which is fantastic. The Mini Pots of Care with schools, nurseries, brownies, cubs and rainbow groups have raised £458,000, a marvellous achievement from so many youngsters.

Community Fundraising Manager, Lynda Thomas, said "I would like to thank our team of volunteers who helped us achieve these amazing figures; they stood through sleet, rain and wind to collect for Marie Curie Cancer Care and their support is really appreciated. A big 'Thank You' to every Marie Curie volunteer but I would also like to thank all those businesses, clubs, schools and organisations who took daffodil

## BIZ AND BYTES

07974 647524

01736 755971

If you require computer assistance, either training or to resolve a problem then give us a call. Visits arranged to suit you. [www.bizandbytes.co.uk](http://www.bizandbytes.co.uk)

[enquiries@bizandbytes.co.uk](mailto:enquiries@bizandbytes.co.uk)

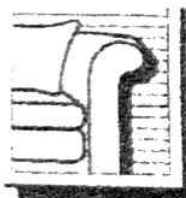
Looking after the home user and small businesses. WEBSITES·BROADBAND·TRAINING·COMPUTER SUPPLY·TYPING

*boxes on till points for us."*

Preparations are already in hand for the Great Daffodil Appeal 2009 and now is the time to sign up, to give a little of your time and to give something back to the community. Please call Nikki or Lynda on 01872 260 500 now for more information.

**Lynda Thomas**

**Community Fundraising Manager  
Marie Curie Cancer Care  
01872 260 500**



# SUITES & SOFAS

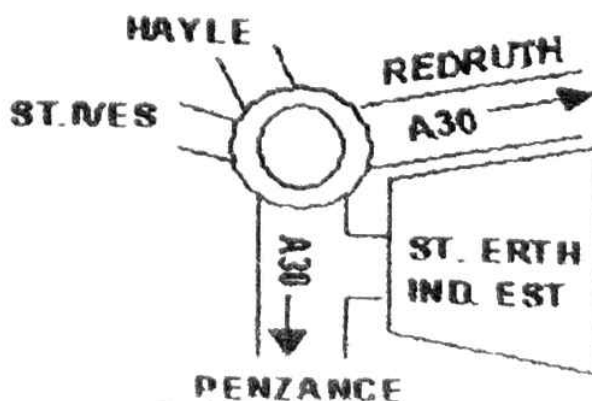


**HUGE RANGE OF STOCK FOR  
IMMEDIATE DELIVERY**

**INCLUDING CANCELLED ORDERS, FACTORY CLEARANCES  
AND ENDS OF LINES  
ALL READY FOR YOU TO VIEW**

FOR DETAILS OF PRESENT  
OFFERS CALL: **07779 760686**  
OR VISIT OUR FURNITURE WARE-  
HOUSE 10am - 4pm MON-SAT

**Unit M  
St Erth Industrial Estate  
To view Sundays or out of  
hours please phone**



## PASSMORE EDWARDS INSTITUTE

13-15 Hayle Terrace, Hayle, TR27 4BU  
Registered Charity #268429



### MEETING ROOMS FOR HIRE

**Passmore Edwards Room** £16 per session

Boardroom table seats 16, plus seating for an additional 12. Ideal for business and community meetings. Approx. 7.5m x 5.5m.

**Front Room Downstairs** £10 per session

Chairs and tables for 40. Suitable for informal meetings, arts & crafts, etc. Adjacent to kitchen. Approx. 7.5m x 5.5m

**Large Room Upstairs** £12.50 per session

With raised platform. Can seat 60+ for lectures and large meetings, or for use as an exercise room. Approx. 13m x 5.8m. *No disabled access.*

*There are three sessions: morning, afternoon & evening*

**Watch for our fund-raising  
auction on September 27<sup>th</sup>**

Room rates increase on October 1<sup>st</sup>

For bookings and more information contact:  
**01736-756055 or [www.hayle-pei.org.uk](http://www.hayle-pei.org.uk)**

## KRIS GAYLE WOWS LONDON CRITICS

Hayle jazz diva Kris Gayle's new CD '8.00 am' was 'Jazz CD of the Week' in the London Evening Standard of 6<sup>th</sup> June. Leading jazz critic Jack Massarik wrote:-

### KRIS GAYLE

8.00am (Big Milk Music)

\*\*\*\* (4 stars out of 5)

"Never assume that London monopolises British jazz talent, especially with sounds as sophisticated as these arriving from Cornwall. Startled by the opening track, Blue in Green, I searched

for well-known jazz stars among the credits, finding instead local heroes such as keyboarder/arranger Viv Rodd, drummer/bass guitarist/producer Damian Rodd and singer Kris Gayle. Her vocal interpretations of All Blues, I'm All Smiles and It Never Entered My Mind are simply top-class. Luscious brass arrangements and expert sound-mixing add further Cornish cream to this unexpected treat."

**JACK MASSARIK**

The following week the CD was featured on the BBC Radio 3 jazz programme 'Jazz Line-Up', and there have been many other positive media comments coming in from jazz radio stations throughout the world. A selection of these can be seen on Kris's website [www.krisgayle.com](http://www.krisgayle.com), which also has plenty of photos, gig schedule, musical samples etc. The CD is nationally distributed by Discovery Records and is available through all good record shops, as well as [www.amazon.co.uk](http://www.amazon.co.uk).

## RAINBOW COFFEEHOUSE

Every Saturday morning 10am – 12noon the Rainbow Coffeehouse opens its doors at the Methodist Church Hall. The central purpose is to bring people together, and although everything – the coffee, tea, biscuits and cakes is free most people donate something and the money goes to a worthwhile cause.

## Postal Subscription Service.

For those readers who would like a Pump sent to family or friends elsewhere in the UK, or local people unable to get into Hayle to collect a copy, we operate a postal subscription service.

Simply send us the delivery name and address CLEARLY PRINTED, together with £2.50 to cover the cost of stamps and envelopes and we will send a year's issue (6 copies) of the Pump as soon as it is published. (UK addresses only—please make cheques/postal orders payable to "Hayle Pump Newsletter").

## **HAYLE CHILDREN'S CENTRE**

**- Bodriggy Street -**

*Dedicated to offering local families a wide range of support and fun things to do:*

- Full day care available on site
- Cafe open to all (homemade food)
- Toy library
- Play activities
- Health advice during & after pregnancy
- Drop-in benefits advice sessions
- Training opportunities & classes
- Children's party & activity rooms for hire

*For more information, pop in to pick up a monthly "What's On" guide, or call 01736-759058.*



Family  
Services

HAYLE CHILDREN'S CENTRE

## **Index of advertisers**

- |                             |                             |                           |
|-----------------------------|-----------------------------|---------------------------|
| All Aerials...26            | Gwithian Holiday Suites...7 | Penpol Garage...17        |
| Angove Sports...33*         | Hayle Beauty Clinic...2*    | Philp's Pasties...18      |
| Aura Photography...30       | Hayle Children's Ctr...39   | Planet Showrooms...22     |
| AWG-Solutions...19          | Hayle Cycles...16           | Plantech...34             |
| Barton Print...35           | Hooked on Curtains...10     | Rosewarne Manor...14      |
| Bigglestons...36*           | Hypnotherapy...8            | Roy Hayes...8             |
| Biz & Bytes...37            | I.M.S. Concerts...25        | Singer & Pfaff...11       |
| Calmtime (music tutor)...12 | J C Electrical...9          | St Erth & Hayle Cars...10 |
| Cliffords Plumbing...12     | John Bennett...27           | St Ives Craft Centre...4  |
| Colin's M'ket Garden...13*  | Katz Hair Design...23       | Strawberry Lodges...3     |
| Computer Repair-IT...30     | Keast, F L...6*             | Strawberry Leisure...3    |
| Country Skittles...31       | Kershaw Music...4           | Suites & Sofas...37       |
| David N'jie Painter...26    | Lindsay's Dog Groom...23    | Thumper's Den...6         |
| Des Button...28             | Morrab Book Fair...7        | Terry Lello...28          |
| Farm Shop...5*              | Murt's Television...29*     | Vanessa Page...35         |
| Fernleigh...11              | O'Dell's Signs...15         | Wade, Neil...24           |
| Footsteps...17*             | Orchard, Alan...32          | Window Cleaner...16       |
| Franklin, P.G...34          | Passmore Edwards...38       | Winn, W.J...32            |
| Guy Barker Hall...10        | Past Life...36              | Yoga...26                 |

You can pick up a copy of the Pump at those advertisers marked with an \* also at Hayle Library, Hayle Day Care Centre, Community Centre, Bodriggy Health Centre, Copperhouse P.O., Martin's, St. Erth P.O., Connor Downs P.O. and many other places.

# HAYLE TOWN COUNCIL 2008/ 2009

Town Clerk's Office, Hayle Community Centre  
58 Queensway, HAYLE, TR27 4NX  
01736 755005

e-mail [townclerk@hayletowncouncil.net](mailto:townclerk@hayletowncouncil.net)  
[www.hayletowncouncil.net](http://www.hayletowncouncil.net)

## North Ward

### **BLAKELEY, Harry**

7 Bodriggy Villas, Hayle, TR27 4PG  
01736 757428

### **CAPPER, Brian**

Sweetlarks, 25 Riverside, Angarrack  
Hayle TR27 5JD  
01736 753838

### **COAD, Graham**

4 Springfield Close, Phillack, Hayle,  
TR27 5AH 01736 756367

### **COOMBE, John (Mayor)**

4 Commercial Road, Hayle  
TR27 4DG  
01736 752831

### **GIRLING, David**

7 Polvelyn Parc, Hayle, TR27 4JP  
01736 753811

### **LELLO, Mrs Terry**

29 Treeve Lane, Hayle TR27 5DQ  
01736 757507

### **POLLARD, John**

5, Beramic Close, Connor Downs  
Hayle TR27 5DP  
01736 752364

## County Councillors

**TERRY LELLO** as above and -  
**SHIRLEY OLIVER**, 3 Viaduct Hill,  
Hayle, TR27 5HT 01736 752121

**FULL COUNCIL MEETING 7.15PM  
1ST & 3RD THURSDAY EACH  
MONTH EXCEPT IN AUGUST.  
THE GENERAL PUBLIC ARE  
WELCOME TO PARTICIPATE AT  
BOTH MEETINGS.**

## South Ward

### **BENNETT, John**

18 Riviere Towans, Hayle TR27 5AF  
01736 753184

### **BIRCH, Paul**

10 The Pathway Fields, Hayle  
TR27 4BE 01736 755424

### **HEAD, Chris**

Inverewe, Penpol Avenue, Hayle,  
TR27 4NQ 01736 759317

### **HEAD, Mrs Jacqui**

Inverewe, Penpol Avenue, Hayle  
TR27 4NQ 01736 759317

### **HORWELL, Richard**

5 Dracaena Avenue, Copperhouse,  
Hayle TR27 4LZ  
01736 752597

### **NINNES, Jayne**

30, Ash Drive, Hayle, TR27 6PF  
01736 753336

## East Ward

### **COOK, Duncan**

8, Clifton Terrace, Hayle TR27 4BP  
01736 754548

### **LELLO, Robb**

29 Treeve Lane, Hayle TR27 5DQ  
01736 757507

## District Councillors:

**J. BENNETT, D. COOK, R. LELLO,  
T. LELLO** as above and—**LIONEL  
PASCOE** 19a Hayle Rd. Fraddam,  
TR27 6EH 01736 850708

**SARAH ROSKILLY** 5 Shafts Down  
Lane, Wall, TR27 5LE 01209 831016