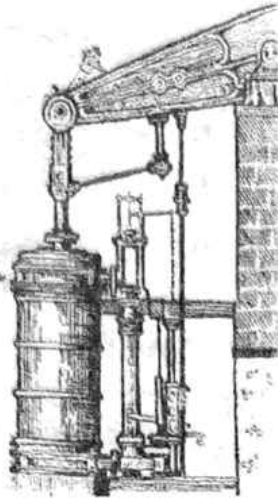


ISSUE 86

Feb / Mar

2009



# HAYLE PUMP NEWSLETTER

**Circulation 2500 FREE copy, please take one. Made possible thanks to our advertisers.**



**ESME JELBERT, HELPING TO IMPROVE THE  
PASSMORE EDWARDS INSTITUTE**

# Hayle Pump Newsletter,

Unit 9, Pratt's Market,  
Chapel Terrace, Hayle TR27 4AB

email: haylepump@btinternet.com

## Advertising Rates

Half page (130 x 95mm)..... £22.00

Quarter page (63 x 95mm)... £12.00

Eighth page (63 x 42mm) ...£7.00

## Editorial Team Members

Donna Anton ( for adverts)

01736 753184

donna@donna-anton.com

Tim Appleton

Valerie Becalick-Ham

Brianna Breeze

Goudie Charles

01736 757351

Don Metcalf

01736 757720

Joy Scott-Mance

Jeff & Sarah Turk

35 Penpol Terrace Hayle

TR27 4BQ,

01736 752319

The Hayle Pump would like to remind readers that items, or articles and Public Notices are accepted as points of view and are not necessarily the opinion of the Newsletter Team. Correspondents are reminded that all material submitted must be signed with their name and address, and if possible, telephone number for validation. This will not be printed if you don't wish it to be. We reserve the right to refuse or edit items sent to us.

You can leave your news, letters, notices etc. at our unit in the market, or with any of the team.

You can also use any of our drop-off points:

Biggleston's & Colin's Market Garden at Foundry,

Angove Sports & Jolly Bodger at Copperhouse.

## Postal Subscription Service

For those readers who would like a copy sent to family or friends, or local people unable to get into Hayle, we operate a postal subscription service.

Simply send us the delivery name and address CLEARLY PRINTED, together with £2.50 and we will send a year's issue of 6 copies. (U.K. addresses only). Please make cheques/postal orders payable to :

HAYLE PUMP NEWSLETTER

Closing date for next  
issue:

20 March 2009

(adverts subject to space  
availability)

## Passmore Edwards Institute.

Since 2007, the Institute has received a series of grants totalling just over £45,000. These grants have been put to use in a number of ways, the main one being renovation of the roof and gutters, work that was carried out by JS Roofing, also insulation of the roof area, making the building much warmer and drier.

Other work carried out includes:

- complete renovation and re-tiling of the men's and ladies' toilets, including the provision of hot water.
- Redecoration of the Passmore Edwards Room.
- Redecoration of the vacated Council rooms.
- Complete renovation of the billiard room.

This has been renamed the Denis Hollow room, in honour of Denis's six decades of commitment to the Institute. The room has not merely been redecorated but replastered, cracks patched, wainscoting repaired, stripped of paint and stained, electrical wires buried and a new wooden floor installed.

Other grant applications are pending for some further major works, including restoring the lantern over the stairwell so that natural light enters the central core of the building, renovating the entrance portico and restoring the stained glass, and installing an efficient central heating system.

## PASSMORE EDWARDS INSTITUTE

13-15 Hayle Terrace, Hayle, TR27 4BU  
Hayle's Village Hall, Charity #268429



### MEETING ROOMS FOR HIRE

Passmore Edwards Room      £18 per session  
Boardroom table seats 16, plus seating for an additional 12. Ideal for business and community meetings.

Denis Hollow Room            £20 per session  
Newly refurbished. Suitable for meetings, exercise, dancing, etc.

Silvanus Trevail Room        £12 per session  
Chairs and tables for 40. Suitable for informal meetings, arts & crafts, etc. Adjacent to kitchen

Trevithick Room Upstairs    £15 per session  
With raised platform. Can seat 60+ for lectures and large meetings, or for use as an exercise room.

Harvey Room Upstairs        £15 per session  
For groups of up to 20 for meetings, interviews, etc.

Tyringham Room Upstairs    £10 per session  
For small meetings, interviews, etc.  
*Upstairs rooms do not have disabled access.*

Three sessions per day: morning, afternoon & evening  
For bookings and more information contact  
01736-756055 or [www.hayle-pei.org.uk](http://www.hayle-pei.org.uk)

Thanks must go to the active board of trustees, and also the Building Manager, Esme Jelbert, who has set a very high standard of cleanliness, despite the construction work that has been going on. She has now joined the trustees.

Esme has also spearheaded fund-raising events, including an auction last September that raised £1,400.

The board of trustees has achieved a lot this year, and hopes to continue to improve the building, make it more energy efficient, and to ensure that it is a sustainable resource for the community for many more years in the future.

**The Farm Shop**  
**31 Penpol Terrace**  
**Hayle**

**Open 6 days a week**  
**8am - 5pm**

**For all your local produce,**  
**fruit, vegetables, plants &**  
**flowers, free range eggs.**  
**Cornish potatoes.**

***Now in:***

**Local daffodils, primroses**  
**hyacinths, and potted**  
**plants.**

**Hayle Decorative**  
**Lights**

The town looked very cheerful this Christmas despite the weather. Our thanks to the small band of volunteers who put in a great deal of time. We were pleased to receive thanks from our Mayor Councillor John Coombe who helped us by performing the 'switching-on ceremony'. Our thanks must go to Heyl Town Band and Hayle-Praze Choir for leading the carol singing.

As we start another year of fundraising and maintenance we are appealing for any help that can be offered to share the

workload. Please contact Dick Horwell **NOW** if you can spare some time.

We are pleased to acknowledge a donation from Mike Refold of Fernleigh B & B who put a collection box on his windowsill and invited those people who admired his window display to make a contribution to Hayle Lights. Also a donation from St. Michael's Hospital and Marie Therese House where we placed two large trees that were enjoyed by patients and visitors. All our trees have now been removed and mulched up for compost by Penwith gardeners.

Our first Quiz Night took place on January 16 and was supported by six teams who enjoyed a fun evening.

More Quiz Nights will follow throughout the year and will be advertised in the Cornishman local news, they are held at Hayle Rugby Club.

Why not bring a team along and help us light up Hayle?

**David Jones, Secretary**  
**Hayle Decorative Lights.**

**HEYLS KITCHEN**

**CAFÉ**

- Extensive Menu
  - Homemade Dishes
  - All Day Breakfasts
  - Take Away
- 6-7 Chapel Terrace  
 Foundry Square  
 Hayle  
 TR27 4AB

**Tel: 01736 756581**

Vegetarian & Children's Meals Available  
 Affordable Prices & A Friendly Welcome

## **KIND OF CORNISH**

Some issues ago we lost our normal source of supply of review copies of Cornish or Cornwall-connected CDs, and this column temporarily ceased. I am pleased to say we have now found a new source of supply, namely The Emporium in Redruth, of which I will supply more details at the end of these CD reviews.

In 2004 the Four Lanes Male Choir marked the 60<sup>th</sup> anniversary of its formation, and in celebration issued a CD of a concert on which it is joined by the Holman-Climax Male Voice Choir. The CD is entitled "60

Years of Song", and with two such renowned and established musical organisations, devotees of the choral arts will not be surprised to learn that this is an album of the highest quality. The standard is even more impressive in view of the fact that this is a live recording, very well recorded in concert at Redruth Methodist Church. The musical directors are Ronald Brown, who after 35 years at the helm of the Four Lanes choir retired from his post shortly after this CD was made, and Roger Wills, who is MD for the Holman-Climax. There are 19 tracks, including three which feature the excellent euphonium of John Hitchens. His virtuoso solo on Rossini's 'Una Voce' is particularly impressive. Highlights of the vocal performances

# **CLIFFORDS**

## **PLUMBING AND HEATING**

- Boiler Changes
- Full Central Heating
- Servicing
- Landlords Certs
- Dripping taps to complete bathrooms
- Full bathroom design and installation
- All plumbing work undertaken
- Free Quotations

*Fully Qualified, Corgi Registered and Water Industry Approved*

RELIABLE, CLEAN AND FRIENDLY SERVICE

# **01736 755170**

## **07761 938183**



# Foundry Furniture Shop

*Vintage, Shabby Chic,  
Household &  
Decorative Items.*

*Pratt's Market*

*Chapel Lane, Foundry  
Hayle, TR27 4AB*

*10am-4pm Mon-Sat*

*Tel. 07981 351648*

include Schubert's 'Ave Maria' featuring soloists Sydney Mitchell (baritone) and Mark Williams (tenor) the ever-popular 'Cornwall', Schonberg's 'Do You Hear the People Sing', and a most haunting version of 'Battle Hymn of the Republic'. The keyboard accompanists are Michael Uren and Agnes Jane, and this CD is highly recommended. (£10.99 – 71 minutes.)

"For the love of it..." is the name of the latest CD by Caracana, a 6 piece folk group specialising in Cornish and Celtic music, as well as other material. Their name is Cornish for 'the love of music', and this philosophy comes out strongly in their performance. The line-up includes, flute, clarinet, fiddle, guitar and recorder, mainly instrumental but with occasional vocals, and all

six members are very accomplished musicians. I was not previously familiar with any of the music played by Caracana, but this is folk music played with verve and brio. I particularly enjoyed the lilting 'Falmouth Gig/Skyjow Ruth Rag Samhair', and final track, the traditional Cornish tune 'Be Gone From My Window'. Caracana are not fazed by odd time signatures (eat your heart out Dave Brubeck!) and the selections include 'Cornwall Chant' in 5/8 time and 'Butterfly' in 9/8. This is music to set the feet tapping and the CD will I am sure be welcomed by the many fans of traditional folk music. (£11.99 – 67 minutes.)

The review copies of this column have kindly been supplied by :-

**THE EMPORIUM  
33 FORE STREET  
REDRUTH  
CORNWALL  
TR15 2AE  
Tel.: 01209 216494**

The Emporium, which is next door to Boots in Redruth's main thoroughfare, has a large stock of items relating to Cornwall, not only CDs, but also DVDs, books, flags, post-cards, craftwork and so on. Lorna and John, who own the Emporium, are always on the lookout for suitable Cornwall-related artefacts on a sale-or-return basis, please phone the above number. The Emporium's website is:-

[www.theemporiumredruth.co.uk](http://www.theemporiumredruth.co.uk)

**Goudie Charles**

## For Sale:

Four drawer filing cabinet, with key  
£30. Ring Jeff 01736 752319



## Paradise Park helps the Wildlife Garden

On Thursday 4 November last year and in atrocious weather conditions the head gardener at Paradise Park, Chris Griffin finally finished the tree planting at the Library Wildlife Garden.

These trees had been ordered months ago from Greenfield Plants, but it was necessary to wait for the leaves to fall before they could be uprooted and transplanted.

This completes the "Breathing Spaces" project initiated by Head Librarian Sally Faulkner in partnership with Hayle in Bloom and assisted by a Lottery Grant.

## GWITHIAN HOLIDAY SUITES

Visit Cornwall/English Tourist  
Board Self Catering 3 Stars

### 4 Self Catering Suites.

All 4 Suites with Bath/Shower/wc fully equipped Kitchen, Dining area and Lounge with comfortable seating, Colour Tv/Dvd etc.

Linen, Towels, Electricity and Heating are included in tariff.

Garden with Barbeque.

Parking space. Access at all times.

Breakfast available. Credit Cards accepted. Open all year.

### Suite 1

Bedroom with Double bed and single bed.

### Suite 2

2 Bedrooms (Double and Double and Single).

### Suite 3

2 Bedrooms (Double Bed and Twin beds).

### Suite 4

Double bedroom.

Surfing Tuition, Board & Wet-suit hire available from a **Top Level England Surfing Coach** used by several local schools.

### **Telephone:**

01736 756560 / 755493

### **Website:**

[www.gwithianholidays.com](http://www.gwithianholidays.com)

### **email:**

[trevorgreenaway@hotmail.com](mailto:trevorgreenaway@hotmail.com)



Heinzers were looking very perplexed by this unexpected addition to their home waters and all the frost on the vegetation.

It has prompted some cold-weather species to visit us, but not in very large numbers as yet. Redwings and Blackcaps have been seen along the Rope Walk and in local gardens, but the strangest sight was a small flock of Oystercatchers grazing the grass in Millpond Gardens.

One of my favourite birds can often be seen around the ponds and the banks of the estuary. With its smart black and white plumage the Pied Wagtail bobs and weaves its way along the shore-line and scurries along the pavements. Once Hayle played host to large numbers of these charming little birds be-

cause the sandy banks around Wilson's Pool were an important nesting area for Pied Wagtails, but in recent years the numbers have declined using this site. In the winter months they are joined by its yellow-breasted relative, the Grey Wagtail from October to March.

This winter we have no feral Mallards on the Millponds, but they have visited the little reservoir at Netherleigh. It was not a good breeding season last summer which may account for the low numbers.

Now I come to the more serious matter of the state of the Outer Pond. The amount of rubbish which is being deposited in it is a positive disgrace and totally unnecessary. The pond itself is already in trouble because of the previous problems of silting, parrotweed and

## Flowertime florist

**17 Penpol Terrace, Hayle**  
**0800 056 0711**

**Voted 1 of the top 250  
florists in the U.K.**

**Bouquets, arrangements, hand-  
tied, funeral tributes & more  
delivered locally, nationally and  
internationally to the Door.  
Greeting Cards, Gifts, Luxury  
Cornish Chocolates**

*Now taking orders for  
Valentine's Day and Mothers Day*

[www.wesendflowers.co.uk](http://www.wesendflowers.co.uk)

## Pet-Time

**At the back of Flowertime**  
**01736 757006**

**Best pet shop in Hayle**

**Full range of pet foods  
including Burns, Hill's Royal  
Canin, James Wellbeloved, Dr  
John's, Bakers.**

**Large range of Wild Bird  
Feeders & Seeds**

**Beds, Collars, Leads, Toys.**

**Special order  
service  
available**



**BWOC  
CENTRAL GARAGE**

• **CAR SALES**

• **FILLING STATION • SHOP**

**Hayle – 01736 755885**

Suppliers of Calor gas • House coals  
• Barbecue coals • Logs

*A wide range of car accessories:*

• Oils • Lubricants • Lamps  
• Antifreeze • Batteries • Auto Glym  
car cleaning range – *and much more!*

• Groceries • Milk • Tea • Coffee  
• Snacks • Sweets etc

*Friendly service - Open 7 days a week*

**Monday to Saturday 7am-9pm**

**Sunday 8am-9pm**

the diesel pollution of last spring. It is not recovering as it should and we will be seeking advice as to what can be done to improve the pond and restore it to better health, but in the meantime you, the public, can help, by not throwing your rubbish into the water. Please take it home with you or dispose of it properly in the bins. Thank you!

*Dedicated to the memory of Gay Arnold, a long-time pondwatcher, who sadly died on 2<sup>nd</sup> January 2009. She will be greatly missed.*

**Georgina Schofield  
Volunteer Wildlife Warden**

\*\*\*\*\*

**What do you get if you if you  
cross a stereo with a refrigerator?  
Cool music**

\*\*\*\*\*

*ccc*

**CORNWALL CHIROPRACTIC CLINIC**

— maintaining your lifestyle —

Registered Chiropractors

Free Spinal Health Check, only until  
March 20th

**Under 40, Happy and Healthy?  
Three good reasons why you  
need to read this.**

I have worked in the Hayle area for over 7 years now, and it still concerns me how few people really understand the real benefits of McTimoney chiropractic and why so few actually use our skills and experience.

Back pain affects over 70% of us at some time. It is the biggest cause of absence from work and can be intensely debilitating and frustrating. Most common between the ages of 35-55, back pain is usually caused by a wide variety of factors to do with the way we live our lives. Often there are telltale signs long before pain really develops, and picking up on these early is the key to avoiding the misery that so many people feel they have to endure.

So, even if you feel perfectly healthy it is a good idea to get a regular check-up with a qualified chiropractor so any problems can be addressed as early as possible before real damage occurs. A relatively small (and easily treated) posture problem can lead to much more complex (less easily treated) back problems in the future.

The Cornwall Chiropractic Clinic is offering a free Spinal Health Check

for a limited period only. This will include a postural assessment, a spinal check as well as general advice on avoiding back pain in the future. The consultation will be with John Tillyard, the founder of the Clinic.

To take advantage of our free spinal and posture check-up offer, just call us on 01736 759088 for your free appointment, or visit [www.cornwallclinic.co.uk/offer.aspx](http://www.cornwallclinic.co.uk/offer.aspx).

This offer closes on 20<sup>th</sup> March, so act now!

**John C Tillyard**

Registered Chiropractor

This advertisement has been  
paid for by John Tillyard

## Hayle in Bloom

**Happy New Year to everyone!**

The turkey is in the dog or cat; the wrapping paper has gone to be recycled and the decorations put away. The New Year has begun. Wow! 2009 is going to be a very big year for Hayle. There will be two competitions this year; the first entry is in July for the South West in Bloom Competition and the second entry is for the National Britain in Bloom which will be judged in August. Plans are being drawn up and work is being designated as I write this letter. If your group, organisation or you, whatever your age, would like to join us even in a small way, please contact a member of the Committee or come along to our meetings which are held at the Hayle Rugby Club on the last Monday of the month, commencing at 7.30 pm.

<b>R</b>	<b>ROY</b>
<b>H</b>	<b>HAYES</b>
<b>G</b>	<b>GLASS</b>

For all your glass & glazing needs  
including greenhouse glass & mirrors

Unit 2, Prykernow  
Penpol Avenue  
Hayle TR27 4NQ  
Tel/Fax: 01736-754023  
Mobile: 07880-530795

## Fernleigh BED & BREAKFAST

En-suite, Colour TV,  
Coffee & Tea making  
facilities in all rooms.

**NON SMOKING**

**26 Commercial Road  
HAYLE  
Cornwall  
TR27 4DG**

**01736 752166**

[mikelynreffold@fernleigh.fsbusiness.co.uk](mailto:mikelynreffold@fernleigh.fsbusiness.co.uk)

Mike & Lyn Reffold

In the National Britain in Bloom competition Hayle is the only town representing Cornwall and the whole of the South West, so let's show them what we can do. It will certainly put Hayle in the spotlight which will help local people and businesses. We need as much support as possible!

Keep warm and healthy. Brrr! It is 11° outside – can't wait for the spring.

Remember, you will be made most welcome to our meetings – till the next time.

**Ingrid Kemp, Secretary of  
Hayle in Bloom**

\*\*\*\*\*

**What do you get if you cross a  
skeleton and a detective?  
Sherlock Bones**

\*\*\*\*\*

## A PARENT'S PRAYER

*Now I lay me down to sleep  
I pray my sanity to keep*

*For if some peace I do not find  
I'm pretty sure I'll lose my mind*

*I pray I find a little quiet  
Far from the daily family riot*

*May I lie back and not have to think  
About what they're stuffing down the  
sink*

*Or who they're with, or where they're at  
And what they're doing to the cat*

*I pray for time all to myself  
(or did something just fall off a shelf?)*

*To cuddle in my nice, soft bed  
(Oh no, another goldfish dead!)*



TO FIGHT THE CREDIT CRUNCH



VISIT **COLIN'S MARKET GARDEN** FOR

A HOST OF TASTY CORNISH PRODUCE

FIND US OUTSIDE PRATTS MKT FOUNDRY SQ

LOOK FOR THE FLAGS

MAKE IT YOUR LOCAL DESTINATION FOR ALL

THE "FIVE A DAY" SHOPPING



*Some silent moments for goodness sake  
(Did I just hear a window break?)*

*And that I need not cook or clean  
(Well heck, I've got the right to dream)*

*Yes now I lay me down to sleep,  
I pray my wits about me keep*

*But as I look around I know  
I must have lost them long ago!*  
(Submitted by D H Green)

### Computer Repair IT

Chris Chapman Computer Technician

**\*\*No Fix/No Fee\*\***

Broadband Setup      Data Backup  
Data Transfer          New PCs Built  
Home Networking      Software Problems

01209 216884      0777 760 4354

Email contact@computer-repairit.co.uk

www.computer-repairit.co.uk

## VOLUNTEER NEEDED - HAYLE ESTUARY OFFICER

Hayle Harbour Management Ltd is promoting the establishment of the Hayle Estuary Management Plan on behalf of many other interested parties. As part of this process, HHML is currently looking for a part-time volunteer who can provide an important role in the management of the estuary. It is currently anticipated that expenses only will be reimbursed. The long-term objective is to make this a permanent role in the future.

An outline of the role of the Hayle Estuary Officer is provided below:-  
**Location of job:** Work from home  
(Harbour Master's office space may

# PLANTECH

THE FRIENDLY RELIABLE SERVICE

- Lawns cut and borders weeded
- Hedges trimmed
- House, garden & building waste taken
- Garden clearance work
- Gravel, sand, topsoil delivered & laid
- Garage and loft clearances
- Free no obligation quotes

(Tel) 01736 754401 / 07979546434



be available)

**Work hours:** Any - up to 10 hours per week anticipated

**Post holder reports to:**

Hayle Harbour Management Ltd

**Overall purpose of the job:** To deliver the Hayle Estuary Management Plan and the actions required through it. The job requires an awareness of, responsibility for and activities that are sensitive to the exceptional natural environmental assets and resources in and around the Hayle Estuary.

**Main duties:**

- To assist in the co-ordination and delivery of the Hayle Estuary Management Plan through consultation with numerous organisations.
- To work with funders and grant providers to source budgets for the actions required to improve

Hayle Estuary.

- To promote the importance of the natural environment through educational material, contributions to the Hayle Pump and other media.
- To act as a primary point of contact for the public, answering queries and requests as appropriate to Hayle Estuary.
- To assist the Hayle Harbour Master in the production of leaflets and posters to promote the Hayle Harbour Byelaws, 1990.
- To develop a volunteer workforce to assist with the promotion of activities contained within the Hayle Estuary Management Plan.
- To promote a programme of relevant research by inviting schools, colleges and universities to study Hayle Estuary.

- To undertake all work to a high standard with respect to Health & Safety, seeking advice from Hayle Harbour Management Ltd in carrying out these duties.

Volunteers interested in this role should send a letter to:  
The Harbour Master, Hayle Harbour, Old Customs House, North Quay, Hayle, TR27 4BL by Friday 20th February 2009. Only posted applications can be considered.

## HELP!

Does anyone have a 100 cm circular knitting needle, size 2.25, I could buy or borrow, please?

Jill Johns 01736 756568

## PLANET Showrooms

- Great ideas for your home -

**Kitchens** - Bespoke & Contemporary Designs

**Bathrooms** - Modern, Minimal & Traditional

**Showers & Wet Rooms** - Enclosures, Walk-ins & more

**Natural Stone & Slate** - from around the world

**Ceramic Tiles** - direct imports from Italy & Spain

**01736 757 453**

Units K1 & G3  
St. Erth Ind Est  
Nr Hayle  
TR27 6LP



- **Hotel & Commercial Contract enquiries**  
please call 07891 235043

## HAYLE PET SHOP

Newly-opened Hayle Pets (formerly Petkins) of Pratt's Market, would like to say Happy New Year, and also a big thank you to all our customers who have wished us success.

Winter has suddenly bitten deep, so don't forget the garden birds that need all the help they can get. With wild bird seed from only 55p a kilo and a full range of other bird seeds, such as niger seed for goldfinches and mealworm for the robins you can help your garden birds make it through to the spring.

We stock a wide range of dog and cat foods, and can offer good advice on the best food to feed your pet, according to age, breed and budget. Our own brand of dog food is great value and quality. Why not take advantage of our customer loyalty scheme. We think we have the best prices in Hayle. Come and compare!

**Clare at Hayle Pets**  
**01736 752866**



**David N'jie**  
Painter & Decorator



10 Chenhalls Close  
St Erth, Hayle (mobile) 07944 156995  
TR27 6HY (home) 01736 756288  
dn-jiepainter-decorator@hotmail.com

## Farewell to Murt's TV

Murt's TV started up 53 years ago by the parents of Geoff Murt, who

## Penpol Garage

*IN TUNE WITH TECHNOLOGY*

**All makes of vehicle repaired & serviced**

**Air-con re-gas £40.00 + vat**  
**Full diagnostic capabilities.**

**Tel: 01736 757011**

**Mob: 07921 218 448**

**17a Penpol Terrace, Hayle**  
**(Near Hayle Train Station)**



**MOST MAJOR CREDIT CARDS ACCEPTED**

Registered member of...  
**GoodGarageScheme.com**

together with his wife Shirley took it over. However, he has decided to retire and closed the shop on 31 January. Over the years the business has had many loyal customers and Geoff and Shirley would like to thank everyone for their support and good wishes.

Mr Ron Keast, the service engineer for over 25 years will still be working in the area and is happy to carry out an installation and set-up service. His contact details are:  
Mobile: 0773 788 0329  
Home: 01209 211505

\*\*\*\*\*

**What is green and goes to a summer camp?**

**A Brussel Scout**

\*\*\*\*\*

**DO YOU NEED  
A REGULAR  
WINDOW  
CLEANER?**



**David Morris Window  
Cleaning**

**We are already well established  
in your area ( 8 years)**

**High reach cleaning system.**

**Phone Dave for a free  
quote on  
01736 756394**



**Council Corner**

**Hayle Harbour Outline Planning  
Permission**

The outline planning application for a mixed redevelopment of Hayle Harbour was considered at the meeting of the Town Council held on 8 January 2009 when it was resolved to approve the application with the request that the following matters be addressed: -

**South Quay**

The development of South Quay as proposed is essential to the balanced development of the harbour but if this is delayed it is necessary to include a condition to ensure that at least repair of the major damage

on South Quay be completed before full occupancy of Privere Fields and Hill Top is allowed.

**Bridge Over Copperhouse Pool**  
Require evidence that the renovation and use of the existing Swing Bridge is not possible.

**World Heritage Site**

Require a statement from ICOMOS that none of the elements of the development will jeopardise the Yrhis inscription.

**Remaining ING Land between  
Riviere Fields and Phillack**

Require a restrictive covenant be given to Hayle Town Council requiring a unanimous approval of the council at a properly constituted meeting prior to any development taking place on the land.

**Station Approach**

Require permanent protection of all of ING land between Hayle Railway Station and Hayle Terrace from development and ideally develop as a footpath and open space for residents.

**Footpaths**

Require the continuation or appropriate rerouting of the following footpaths, insofar as they are on ING land, with appropriate signage: 102/29/4, 102/37/1, 102/30/6, 102/30/1, 102/30/4, 102/33/1, 102/33/2, 102/33/3, 102/34/1, 102/1MUC/13, 102/22/2, 102/17/1, 102/16/1, 102/16/2, 102/43/2, 102/1MUC/10 & 102/32/1.

**Community Service Facilities**

Alternative provision must be made to ensure the promised community service facilities are provided. These elements are fundamental to a well balanced development and without

them the existing services will be overburdened, contrary to the aim of PPS 1.

### **Financial Penalty**

Require a financial penalty to be paid in the instance that ING, or any successor in title, fails to deliver the development of South Quay within seven years of outline permission being granted.

The application was then considered by Penwith District Council on 13 January 2008. The planning committee included all four Hayle ward members and deliberated for about 90 minutes before voting to support the officer's recommendation of 'Minded to grant conditional approval but deferred for the following: advertise departures from the local plan and negotiate satisfactory Section 106 agreements'. In addition there were amendments incorporating the town council's recommendations and to create a sub-committee of Hayle Ward members plus the chair and vice-chair of Planning to be invited to 'appropriate' meetings during the negotiation phase.

### **Annual Citizens and Organisations of the Year**

Nomination packs are available from the Town Clerk's office for the Citizens and Organisation of the Year Awards. The Council is also seeking nominations for Hayle Young Person of the Year and Hayle Youth Organisation of the Year. The deadline for all nominations will be **Thursday 19th March 2009**.

### **Town Diary**

If you know of or are involved with organising any community events

## **IN HOME COMPUTER REPAIR**



In Home & Small Business Computer Support

- No Fix - No Fee
- No Callout Charge
- Fast, Friendly, Local Service

**Tel: 01736 757580**



[www.onestopfancydress.com](http://www.onestopfancydress.com)

please forward all relevant details, including points of contact, to the Town Clerk so that they may be added to the calendar which may be viewed on the Town Council's website.

### **Hayle Community Centre**

If you are planning on holding any meetings, events, classes or even parties the Community Centre has rooms for hire. Space is available

for regular sessions or one-off bookings. Remember that CAB, Credit Union, Link into Learning, Stonham Housing and most recently Slimming World and others hold regular sessions and surgeries. Contact the Town Clerk for details of services and available space.

Further information on the above and other local issues can be obtained from the Council website.

**Hayle Town Council**  
**Hayle Community Centre**  
**58 Queensway**  
**Hayle, TR27 4NX**  
**01736 755005**  
[townclerk@hayletowncouncil.net](mailto:townclerk@hayletowncouncil.net)  
[www.hayletowncouncil.net](http://www.hayletowncouncil.net)

PLEASE SUPPORT  
 LOCAL TRADERS

## A Grand Night Out

I recently went to two events at the Hall for Gwinear and both were most entertaining. The first was "An Evening in Majorca". By the reading of Chopin's letters and playing his moving compositions on the piano, Michael Lunts conveyed the atmosphere of this sometimes unhappy period of Chopin's stay in Majorca. His portrayal was a veritable tour-de-force.

The second was a spectacular performance by Rogue Theatre of "Pathway to the Red Sun". To quote from the programme: 'Inspired by Madame Butterfly and set in a futuristic landscape Pathway to the Red Sun brings together influences ranging from Japanese ghost stories

# PHILP'S

FAMOUS PASTIES

EST



1958

\*BAKING 7 DAYS A WEEK\*  
 FOR THE GREAT TASTE OF  
 CORNWALL'S  
 PREMIER PASTY MAKERS  
 WITH OVER 50 YEARS  
 EXPERIENCE,  
 VISIT US NOW  
 AT OUR SHOPS AT:



1 East Quay,  
 Hayle  
 TR27 4BJ  
 01736 755661

1 Foundry Hill  
 Hayle  
 TR27 4HL  
 01736 753302

Market Place  
 Marazion  
 TR17 0AR  
 01736-710332

The Square  
 Praze an Beeble  
 TR14 0JR  
 01209 831360

to Blade Runner creating a richly imagined epic which mixes fantasy with an age old love story.' There was wonderful music and song throughout.

Rogue Theatre is a touring company and they will be presenting the play at St. Ives Theatre on March 3<sup>rd</sup> and in Penzance at the Acorn on March 7<sup>th</sup>.

I must congratulate Hall for Gwinear for putting on these events, they are very well supported and early booking is advised.

Their next production is a Jazz evening on February 14 with the Neil Maya Quartet tickets £7.

On March 21 there are Axel and the Big Wheels, whose music is reminiscent of Louis Prima and Louis Jordan (Jump Jive) and on March 27<sup>th</sup> Cube Theatre presents "Chefs Special" by Jon Welch, music by Frank Moon. (book on 01736 850781)

**Jeff Turk**

## St. Erth & Hayle Cars

**0770-60-40400**

TALK TO THE DRIVER NOT AN OFFICE

[www.sterthandhaylecars.co.uk](http://www.sterthandhaylecars.co.uk)

**TAXIS**

## **AUTO SHACK**

On January 5 this year Adam Burstow opened for business. Adam is a Hayle man and since the



**Want to play music?  
You're never too old!**

*I'm a coach, former session musician (guitar, bass, harmonica), and a Registered Guitar Tutor. With over 30 years' experience, I specialise in helping you learn in your own way, to read music or play by ear. I teach acoustic and electric guitar, bass guitar and blues harmonica.*

Learn music the fun way  
with Graham Smith.

Call me on 01736-740141  
(based near Penzance)  
[graham@calmtime.com](mailto:graham@calmtime.com)  
[www.calmtime.co.uk](http://www.calmtime.co.uk)

age of 16 he has been a car mechanic. He is very experienced and knowledgeable about all aspects of car maintenance.

The shop is between 'Philp's Pasties' and 'Strawberry Blondes' on East Quay, and he stocks a wide range of Draper tools, engine oils and consumables. Also cleaning materials, paints, sub woofer speakers, alloy wheels – the lot! As far as car spares go he can often get them within an hour, as there are eight deliveries a day.

The Pump team wishes him every success in his new venture.

\*\*\*\*\*

**How do snails keep their shells shiny?**

***They use snail varnish***

\*\*\*\*\*

*Shops and services guide to Pratt's Mill  
home to the Hayle Pump Newsletter*

<p><b>B.K. VIDEO</b> 01736 755277</p> <p><i>Video &amp; DVD sale &amp; rental</i></p>	<p><b>BROTHER WOLF ANIMAL RESCUE</b> 01736 757679</p> <p><i>Charity shop</i></p>	<p><b>CORMELIAN</b> 01736 755890 0797 400 0747</p> <p><i>Little shop of treasures</i></p>
<p><b>HAYLE PET SHOP</b> 01736 752866</p> <p><i>Pet food, also bulk pet food &amp; accessories</i></p>	<p><b>HAYLE PUMP OFFICE</b></p>	<p><b>HAYLE BAIT AND TACKLE</b> 01736 758588</p> <p><i>Fishing equipment and outdoor gear</i></p>
	<p><b>THE COUNTRY LARDER</b> 0787 029 5031</p> <p><i>Home brew and preserves</i></p>	
<p><b>COLIN'S MARKET GARDEN</b></p> <p><i>Fresh fruit and vegetables</i></p>	<p><b>FOUNDRY FURNITURE SHOP</b> 0798 135 1648</p> <p><i>Vintage &amp; shabby chic</i></p>	<p><b>SUE'S FABRIC &amp; WOOL SHOP</b></p> <p><i>Wool, material &amp; haberdashery</i></p>
	<p><b>Ground Floor</b></p>	

*Market—Hayle Shopping Arcade,  
letter and twenty other businesses.*

<p>FOUNDRY GALLERY 01736 752787 <i>Paintings , Prints &amp; Art pottery</i> H.D. FRAMING 01736 752787</p>		
<p>ANTON KEMP <i>pottery</i></p>		<p>CARLA JENNINGS 0791 943 5926 <i>Jeweller</i></p>
<p>LUCY KEMP 01736 756379 <i>Jeweller</i></p>	<p>ANDY PARKER <i>Photographer</i> 01736 753642 0770 691 6454</p>	<p>JANE GLOVER <i>Artist and Printmaker</i></p>
<p>HAYLE MODEL RAILWAY CLUB</p>	<p>BEAUTIFUL U 01736 759377 <i>Beauty treatments</i></p>	<p>LASTING IMAGE TATTOOS  07862 193198</p>
	<p><i>Upper Floor</i></p>	
<p>ELLE' S SALON 01736 752522 <i>Ladies &amp; gents hairdressers</i></p>		



Would you like your hair  
done in the comfort of your  
own home?

Call local fully qualified  
hairdresser

## KATZ HAIR DESIGN

Competitive prices  
Special rates for pensioners

Call Kat on 07799 815606  
or 01736 790680

Available daytime, evenings  
& weekends

### Hidden Words Quiz by Cleverclogs

This time we are looking for  
words connected to music.

Example: It's peculiar, lan always  
wins at this game. Answer = ARIA

Entries in by March 20, with a first  
prize voucher of £20 to be spent  
with any of our advertisers, and a  
lucky dip voucher of £5, drawn from  
all entries.

1. Up came the old anchor, a lead  
sinker, covered in barnacles.
2. The new ray-gun seems to stun  
everyone within 20 yards.
3. I saw her son at a fancy dress  
party last night...
4. ...and I saw Peter again this  
morning – out for a run.

5. St. Petroc knew he had his hands  
full converting the Cornish!
6. "This music is universal." (says  
who?) (the answer is not music)
7. One of his boats was a skiff – let  
in too much water though.
8. An albatross wing has the largest  
span of all seabirds.
9. With the hound in swift pursuit,  
Eldred the Fox ran for his life.
10. I'll ask again – what sort of thing  
are we looking for?
11. This apron does stop the fat  
splashing my shirt.
12. I find his furniture is so ultra-  
trendy.
13. I wish you'd stop opposing every  
idea I put forward.
14. After leaving Australia, Ireland  
was her next destination.
15. The dog gave the ball a deft flick  
with its nose.

### Answers to quiz in last issue:

- |             |                |
|-------------|----------------|
| 1. cake     | 9. carol       |
| 2. rose     | 10. day        |
| 3. stocking | 11. party      |
| 4. tree     | 12. decoration |
| 5. Island   | 13. present    |
| 6. cactus   | 14. lights     |
| 7. box      | 15. shopping   |
| 8. card     |                |

The winner of the £20 voucher was  
S. James of Queensway and the £5  
lucky dip was won by D. Harris of  
Angarrack.

### THE COUNTRY LARDER

I would like to wish everyone A  
Happy New Year.

With new stock arriving all the  
time, the choices are growing for

home brew customers; come along and see how much your local home brew shop has grown.

With the home-made jams/jellies /chutneys, production kicks back into action on the run up to Valentine's Day – when Rose Jelly and Lavender Jelly will be available. I have produced Quince Jam which goes very well with cheeses and crackers, and Rose Petal Jam (an Eliza Acton Recipe).

I look forward to moving through 2009 serving the local people of Hayle.

Enquiries: Janet 07870 295031  
Email: [thecountrylarder@yahoo.com](mailto:thecountrylarder@yahoo.com)

Opening hours:

Mon, Tue, Thur, Fri: 9.30 – 5, Sat:  
9.30 – 3.

## **P G Franklin**

Chapel Hill, St Erth

General House Repairs • Property Maintenance

Garden Landscaping

**NO JOB TOO SMALL**

Telephone: 01736-757360

Mobile: 07778-739341

## **PRAZE HAYLE MALE CHOIR**

### **Three Years of Praze Hayle**

We are proud of our achievements as we enter our third year. In the last year we undertook over 30 engagements, some sharing the stage with other choirs, including guests from outside Cornwall, the Heyl Band and other brass and wind bands. We have also been on a successful weekend tour to Chip-

## **LINDSAY'S DOG GROOMING**

*Dog grooming for all sizes,  
breeds & coats.*

*Specialising in Poodles.*



For more information,  
contact Lindsay on  
01736 753864 -or- 07792 849240

.....

<i>Situated at</i>	<i>Local</i>
<i>Connor Downs</i>	<i>collection</i>
<i>in Hayle</i>	<i>&amp; delivery</i>

penham and Abingdon. We attracted new members last year and if the above activities interest you, please come and listen to us with a view to joining us. In March the Choir will be recording its first CD.

Our next concert is Crowan Feast at the beginning of February and a start to Praze Hayle's programme of concerts for the year. As is traditional, we share the stage at Crowan Church with the young voices of pupils from Crowan School.

### **Recent Appearances**

Following two appearances with Heyl Town Band for the Hayle Christmas Lights and carols at Marie Therese House's Tree of Life, the main Christmas performances were at Praze Institute for the annual Senior Citizens' Christmas meal and

at Ventonleague Chapel's Carol Concert when it joined the newly formed ladies' choir, St Piran Singers of Heyl. Together the two choirs filled the chapel. The format for this year's carol concert was devised by Ann Birch, Musical Director of both choirs, and included contributions from each choir, three items by the combined choir, carols in which the congregation joined and readings by a member from each choir and by congregation member Sam Johns. The choirs' accompanist was Una Skellington. The evening also included the revived tradition of "strip the apron" of donation envelopes carried out by the Mayor, John Coombe. Along with the collection from the congregation, all proceeds will go to St Julia's Hospice.

**Forthcoming Engagements**

**Monday 2 February** Crowan Feast, Crowan Church 7.00pm

**Saturday 14 March** Choir Social Evening

**Sunday 15 March** with Porthleven Band, St Bartholomew's 7.30pm

We continue to seek singers but especially those with a good musical education and background both to join the ranks of the choir and to act as deputy to our Musical Director. Anyone interested please contact Roger Evans, Secretary, ☎ 01736 754681 or on line at [www.prazehaylemalechoir.co.uk](http://www.prazehaylemalechoir.co.uk).

**CORNELIAN, THE LITTLE SHOP OF TREASURES**

Why not visit Hayle's specialist book, map, model railway and



**NEIL WADE**

**MOTOR ENGINEER**

**CENTRAL GARAGE**

**10A HAYLE TERRACE, HAYLE**



\*\*\*\*\*

**MOT CAR & MOTORCYCLE TESTING CENTRE**

**DIESELS & CATALYSTS TESTED\*SERVICING\*REPAIRS\***

**WHEEL BALANCING\*EXHAUSTS\*TRACKING\***

**TYRES\*BATTERIES\***

**PROVIDING SERVICING & REPAIRS TO ALL MAKES OF VEHICLE**

**TEL 01736 756512**

**MOB 07990 981546**

**HOME 01209 610651**

diecast shop for that unusual gift? Browse through our wide selection of Cornish and other anti-quarian books and maps or see our stock of studio pottery, glass, retro clothes and ephemera.

Contact Gill and Graham at Cornelian, Pratt's Market, Hayle, on 01763 755890 / 07974 000747.



**Mark's Sumo Hire**  
Fun for everyone  
Corporate fun days,  
parties, charity events,  
special occasions  
and loads more...  
Call Mark for more info  
01736 756384 or 07766631446  
All enquiries welcome



## RSPB NEWS

### Birding highlights

Around October 21<sup>st</sup> – 23<sup>rd</sup>, a Yellow-browed Warbler spent a few days at the hide with Long-tailed Tits and Goldcrests but could be elusive at times. A Spoonbill at Copperhouse on November 9<sup>th</sup> only stayed for a day, and the last of the 'summer' visitors were a Sandwich Tern on 9<sup>th</sup> December and a Common Sandpiper on 21<sup>st</sup> December, presumably over-wintering birds. The mixed Canada/Greylag goose flock in December held two Pink-feet and a dark-bellied Brent on occasion while other wildfowl included up to 1320 Wigeon, 185 Teal, 56 Shelduck and a lone Goosander.

25

## John BENNETT

Independent

Hayle Town Council

Penwith District Council



### *Your representative for Hayle South Ward*

The Hayle Harbour planning application is moving through the system and a lot of details are now being negotiated. Hayle ward members are now on a committee to take part in appropriate meetings. Many more details are on my web site and in my display case at Martin's in Foundry.

Telephone: 01736-753184

Email: [john.bennett@penwith.gov.uk](mailto:john.bennett@penwith.gov.uk)

Web site: [www.hayle.net](http://www.hayle.net)

### *News from Reserve*

Jenny attended a meeting of the Hayle Estuary Disturbance Action Group to review the impact of the new signs and the enforcement protocol. The group consists of representatives from the RSPB, Natural England, the police, the Environment Agency and Hayle Harbour Management Ltd, who all agreed that closer working and a no-tolerance attitude to disturbance had been largely successful. There was, however, an increase in reported incidents of bait digging that we need to stamp out. With public support, we will continue to work together to tackle future issues. Jenny has also been in discussions with Gwithian Towans land managers to design a strategic proposal to

improve public access and enjoyment from Hayle Estuary to Godrevy. All evidence suggests that visitor numbers and recreational pressures will continue to rise and so it is important that we continue to monitor the situation and provide a better quality experience for our visitors.

Just before Christmas, all long-standing volunteers were invited to Christmas lunch at the Old Quay House Inn. This was held to thank the volunteers for all their support over the year. Without their help, the local RSPB staff could never achieve as much as we do. So from Dave and Jenny thank you and see you all in 2009.

**Jenny Parker, RSPB**  
[Jenny.Parker@rspb.org](mailto:Jenny.Parker@rspb.org)

## **'THE LIKES OF US' THE AMATEUR WORLD PREMIERE - OPENING NIGHT**

On Thursday 15<sup>th</sup> January 2009 the Kidz R Us Group in St. Ives had the honour of performing the World Premiere of the first musical written by Sir Tim Rice and Lord Andrew Lloyd Webber. 'The Likes of Us' tells the story of the life of Dr. Thomas Barnardo, a man whose crusade to rescue children living on the streets became world renowned.

Wow! This had to be the most memorable day of my life. The anticipation my friends and I had at school added to the excitement. We all arrived at the Theatre early

# **ALLAERIALS**

get set for digital  **Digital Aerial & Satellite Tv Specialists**  
Registered Digital Installer

**Digital Aerial Installations & Upgrades**  
**Freesat Supplied & Installed**

**Tv's, Video's, Freeview, Satellite Systems Setup Service**  
**All Work Guaranteed \* Fully Insured \***  
**Reliable Local Engineer, Free Friendly Advice**

Call Jonathan on **01736 759225**

Mobile 07979503907 Email [info@allaerials.co.uk](mailto:info@allaerials.co.uk)

[www.allaerials.co.uk](http://www.allaerials.co.uk)

and backstage we were all chatting and bursting with joy, but when the band played the first note of the Overture the nerves kicked in, and we all sat quietly and on our best behaviour. The first step I took on the stage gave me a warm buzz of happiness. As we sang our first words my heart started to race and my emotions gave me that extra boost of energy which added to the performance. When we started to sing, I could feel the atmosphere of the title song 'The Likes of Us'. I truly felt that my life was forgotten and I was in the shoes of the unfortunate orphans that had been living on the rooftops. As the song ended and I stood to say my speech, I looked around at my friends that were on stage too, and that is when I realised that what I was doing in front of Sir Tim Rice was a reality. My narration ended as well as the song and every hand in the audience drew together to symbolize their belief and appreciation in our performance.

When I reached the dressing room, my friend Brenna and I looked at each other and neither of us needed to say anything, I could tell by everyone's emotions what we all were thinking ... WOW!

As the show drew to an end and we took our energised bows, the audience rose to their feet and let out its thunderous applause and booming cheers, cameras flashed and smiles spread. The feelings that filled my heart were indescribable. From the stage I could see Sir Tim Rice in the front row with a huge smile on his face and then I saw him

# BARTON print

Tel: 07799 411525  
Fax: 01736 757022

## Quick Reliable General Printing Service

JUST A SMALL SELECTION OF THE SERVICES WE OFFER!

- BUSINESS CARDS
- COMPLIMENT SLIPS
- NCR PADS / SETS
- LEAFLETS
- MENU'S
- NEWSLETTERS
- ENVELOPES
- LARGE FORMAT PRINTS
- LETTERHEADS
- OVERPRINTING

● RAFFLE TICKETS

● B/W COLOUR COPYING

COMPETITIVELY PRICED

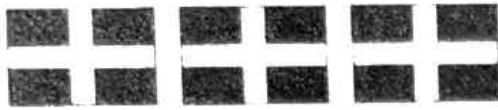
1 Turnpike Road, Connor Downs

Telephone 07799 411525 01736 754220

stand up. I thought Oh no! He's not leaving already is he? But then I saw him walking next to the stage and I realised he was coming up onto the stage! LITERALLY INDESCRIBABLE!

Phil welcomed Sir Tim Rice to the stage and then moved aside to let him speak. He gave a heart-touching speech, smiles stuck to faces. I went down the stairs of the stage to roam the audience, and as I did so there stood Sir Tim Rice, who said to me "You were incredible". I was stunned before but now I was for once -- lost for words!

When I got home I knew I would have a sleepless night but I also knew that when I did fall asleep many happy dreams were awaiting me!



## **KERNOW ELECTRICAL & PLUMBING SUPPLIES LTD**

8 Hayle Terrace  
TR27 4BS  
01736 758491

**OPENING HOURS:**  
**MON-FRI 8 to 5**  
**SAT 9 to 1 - SUN 10 to 2**

For all your electrical & plumbing needs. Trade & public welcome. We sell everything from Hoover belts/bags to cable, lighting, lamps & tubes, batteries & computer accessories – plus a large range of low-energy lamps.

That night made me realise that theatre was what I wanted to be doing for the rest of my life, not because of the publicity and celebrities, but because of the indescribable happy feelings that one performance gave to so many people.

I am also very happy in the knowledge that part of the money raised from our performances will be going towards the Barnado's Charity which still continues the work of Dr. Barnardo today.

**Alannah Egan (Aged 12)**

### **USEFUL TIP**

If a recipe calls for 'diced chicken' it's much easier and safer to cut it up with a clean pair of scissors. You won't get your fingers cut then.

**Barry (From Illogan)**

# HAYLE LIBRARY

To all our customers old and hopefully new may we wish you a Happy New Year.

### Self Service

Last year we had the installation of the new Paragon self service machines. If you have not used them come along and have a go, there is always a member of staff ready to help.

There also is a stand alone PC on which you can book a slot for the use of the public network computers or place a reservation on an item.

If you wish to renew your books there is a 24hour renewal line 0845 6076119

### Public Network

The PCs were replaced on the 22<sup>nd</sup> January 2009 with a new up to date system. Concessionary users and children are entitled to one free hour a day, all others get one half hour a day, for extra time there is a charge of £2.00per hour. We have many online sites; for looking for work try Hi Ho, and for tracing your family history use Ancestry.

### House and Family History

#### Drop in Day

**Tuesday 10<sup>th</sup> March 10am-4pm**  
Find out how to begin tracing your ancestors and the history of your property with staff from the Cornwall Records Office

### Todlins

With Ruth every Monday 10.00am-11.00 am. There is an entry charge of £3.50, lots of music, singing, and rhyme. Refreshments are provided, bring your toddlers and join the fun.

(Not half term or other school holidays)

### Storytimes

Every Wednesday at 3.45pm.

### Wii, xbox, playstation 2, games and films

All items are available for hire, please note, all have a hire charge per week. (If you go a day over you will be charged another full rental charge for the week; this applies to adults and children)

### Groups

We hold a reading group on the first Wednesday of each month and a U3A writing group every other Thursday.

### Library

We are open Monday, Tuesday, Wednesday and Friday 9.00am-6.00pm, Saturdays 9.30-12.30 closed all day Thursday

For any information please email: [hayle.library@cornwall.gov.uk](mailto:hayle.library@cornwall.gov.uk) or phone 01736-753196 or visit [www.cornwall.gov.uk/library](http://www.cornwall.gov.uk/library).

**Look forward to seeing you!  
Remember it is free to join the library.**

## **West Cornwall Community Wheels**

I recently had occasion to attend Bodriggy Health Centre several times for various tests. This normally would not have been a problem, I could just walk up there in 15 minutes or so. Suddenly I found it too much of a strain, so got in touch with the Community Wheels office in Foundry Square. What a great service this is, you must phone in the day before and book by 1.30pm, but the red bus arrives on the dot and

## **AUNTIE MAGGIE'S HOME MADE CAKES**



Rock buns to cup cakes  
Cheesecakes to  
shortbread

**Birthday & Wedding Cakes  
SPECIAL CARROT CAKE  
Full list available on request**

**Made to order—local delivery  
Very reasonable prices  
Top class ingredients**

**Tel: 01736 756795  
Or Mobile 0754 457 2702**

[maggiemartin8@googlemail.com](mailto:maggiemartin8@googlemail.com)

— CHIROPRACTOR —

**Michelle Denny BSc (hons), D.C.**

*Fully registered with the  
General Chiropractic Council*

Specialist treatment for  
various conditions including:

- |                 |                  |
|-----------------|------------------|
| - Low back pain | - Neck pain      |
| - Sciatica      | - Whiplash       |
| - Trapped nerve | - Headaches      |
| - Shoulder pain | - Osteoarthritis |
| - Knee pain     | - Disc problems  |

- Thorough case history & examination
- Clear, detailed diagnosis
- Gentle specific adjustments
- Treats the cause not the symptoms
- Free spinal screening • X-ray services available
- Friendly, relaxed environment
- Early morning & evening appointments available

**The Copperhouse Clinic  
5 Market Square, Hayle  
01736 757524**

[thecopperhouseclinic@talktalkbusiness.net](mailto:thecopperhouseclinic@talktalkbusiness.net)  
[www.thecopperhouseclinic.co.uk](http://www.thecopperhouseclinic.co.uk)

## ALAN ORCHARD & SONS

APPRENTICESHIP SERVED



PROFESSIONAL TRADESMEN

CARPENTRY & JOINERY

uPVC FASCIAS

ROOFING, BUILDING,

DECKING

KITCHEN FITTING

01736 756687

07787 148571

27 GUILDFORD ROAD

HAYLE TR27 4PP

delivers you to your destination, and so willingly and cheerfully too. Bookings for Mondays must be made no later than Friday afternoon. Also if you have a bus pass, it is free.

**Sarah Turk**

To find out more:

West Cornwall Community Wheels

Unit 4, Foundry House, Foundry

Square, Hayle, TR27 4HH

01736 757364

email [communitywheels@gmail.com](mailto:communitywheels@gmail.com)

## YOGA

**Beginner's Classes at the  
Passmore Edwards Institute**

**Mondays: 7-8.30pm**

**Tuesdays: 9.30-11am**

**Fridays: 9.30am & 7.15-8.30pm**

*Drop-in £5/class or book 10 for £45*

Contact Gwyn on 01736-740969

Mobile 07815-945695

## FREE LEGAL ADVICE CLINIC

On the first Tuesday of the month  
from 1.30 pm to 3.30 pm at the  
Hayle Day Care Centre.

Vingoe Lloyd, Solicitors, will be providing a free legal advice clinic for visitors to the Centre, their families and carers relating to elderly client issues such as:

Wills

Lasting Powers of Attorney

Probate & Administration of Estates

Long Term Care

Disposal of Assets

See Lesley Channell at the  
Daycare Centre ( 01736 755000) to  
arrange an appointment.



**HAYLE DAY CARE CENTRE**  
Commercial Road, Hayle, offers a 5  
day a week *affordable* daycare facility  
for the elderly of Hayle and District.

-oo00oo-

Transport, freshly cooked meals,  
meals on wheels.

Also includes bathing, hairdressing,  
therapy & lively social interaction.

- oo00oo-

To book a meal or attendance at the  
centre contact:

**Manager Lesley Channell**

**01736 755000**

# HOLLOW'S SHOP OF TIME

Hollow's Shop of Time is taking place in the Passmore Edwards Institute between Saturday 7 February – Saturday 14 February.

It will be the culmination of work done by Alesandra Ausuenda, Lois Wild and Anna Murphy under the Wildworks banner.

With the pupils from Penpol Primary School, and community groups within Hayle, we will be collecting memories and hopes for the future to make an unusual "Shop" where you can "Buy" time.

We have already held a Tea-Treat morning in the Institute to collect stories, and will be holding another in the School, where the children will

be story detectives.

## Opening Times.

Grand Opening is on:

**Sat. 7 February 2-3pm**, join us for Slice of Time Cake. Then open all day, sherry at 6 – 7pm

**Monday 9 Feb. 1 – 5pm**

**Tuesday 10 Feb. 1 – 5pm**

**Wednesday 11 February**

**11am – 1.30pm, 6.30 – 8pm**

**Friday 13 Feb 4pm – 7pm**

**Saturday 14 Feb 11am – 4pm**

*Anna Murphy*

## SUPPORT YOUR LOCAL TRADERS

### USEFUL TIP

To keep your remote control clean and dust free, put it a thin clear plastic bag and seal. The buttons can still be pressed easily.

*Barry (from Illogan)*

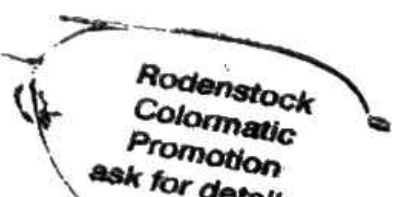
18 Commercial Road  
HAYLE  
TR27 4DG  
01736 753145



21 Alverton Street  
PENZANCE  
TR18 2QP  
01736 366106

Bring this advert in for **10% off** complete spectacles £75 and over

Excludes offers and promotions already discounted



# ANGOVE SPORTS

40 Fore Street  
Copperhouse  
Hayle TR27 4DX  
01736 752238

*Rackets repaired  
and restrung.*

*For all sports  
equipment,*

*clothing  
and  
fishing  
tackle*



## NEW HAYLE WEB SITE

A new web site has been launched by the Foundry Gallery in Pratt's Market.

[www.picturesofhayle.co.uk](http://www.picturesofhayle.co.uk) is dedicated solely to images of Hayle and the surrounding area. The site will offer:-

**Photographs:** Original vintage, reproduction vintage and current pictures by local photographers.

**Original paintings:** Antique as well as contemporary works by local artists.

**Prints:** Both limited and open edition.

It is hoped that the site will be of special interest to Hayle people who have moved away as well as those living here.

All pictures can be purchased directly from The Foundry Gallery or ordered via the internet.

Any artist who would like to have their work considered for inclusion is welcome to submit their pictures to the Foundry Gallery.

*Paul Dyer*

## Material Girls opening

I will be opening Sue's Fabric and Wool Shop (Material Girls) at Pratt's Market, Foundry Square, on Thursday, 19<sup>th</sup> February at 10am in Chrissie's old unit at the front of the Chapel.

I will be selling very reasonably priced fabrics, some from as little as £1 a yard ( yes, I do still prefer yards but am versatile enough to manage metres if you prefer!) I have a fantastic range of plastic tablecloth sold by the yard, so you can have as much or as little as you need! I do gingham and pretty polycotton and cotton prints, furnishing and curtaining fabrics.

I also have a good range of wool, double knits, chunky and lovely fancy wool (the eyelash and hairy ones that people like to knit scarves with) and I am willing to expand the range when I know what you want.

I have haberdashery, so when you need some elastic or cotton or ribbon you will know where to come. I also make and sell aprons and peg bags.

Come along on Thursday, 19<sup>th</sup> February, and join me for a coffee and biscuit! I really look forward to meeting you!

*Sue 01736 762418*

## PARKY DIGS KRIS

Hayle diva Kris Gayle received a big boost recently when that noted lover of vocal jazz Sir Michael Parkinson asked for permission to put one of the tracks from Kris's latest album '8.00am' on his website, and naturally Kris agreed. Sir Michael commented 'Kris has a fascinating voice, and is a very good talent.'

Kris will be appearing in a guest spot with legendary New Orleans drummer Barry Martyn and his band on 14<sup>th</sup> February at The Acorn, Penzance. This is a return visit for Barry and his band The Young Bloods after Kris and Barry's sell-out concert in Penzance a year ago – for ticket information contact the Rainy Day

Gallery, Penzance, Tel. 01736 366077, or the Acorn, Tel. 01736 365220.

On Sunday February 22<sup>nd</sup> Kris makes one of her regular appearances at the Chapel Street Brasserie and Wine Bar. She will be accompanied by guitarist/vocalist John Knight in their duo called **knight&gayle**, which performs smooth jazz and classic contemporary material. The gig starts at 7pm – for details, bookings etc. phone 01736 350222.

Kris's latest CD '8.00am', with orchestrations by Hayle piano maestro Vivian Rodd, can be obtained from 01736 757351, or online at [www.jazzcds.co.uk](http://www.jazzcds.co.uk).

**Goudie Charles**

## J C ELECTRICAL

Your complete 24 hour Electrical Service

City & Guilds Qualified

Tests to BS7671

*Rewires, New Build, Lighting, Extra Sockets,  
Showers, Heating*

Prompt Reliable Service  
All Work Guaranteed

Free Estimates  
Part P registered

Tel: 01736 754543  
Mobile: 07739 577 549



## Luxury Sliding Door Wardrobes

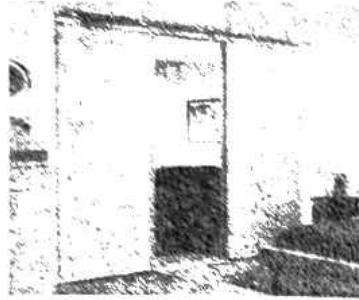
at AFFORDABLE prices!

For a Full colour brochure and price list  
Call SpaceMaster in Cornwall

01326 377 620

Many styles made  
to measure for  
YOU!

Any room  
Any shape  
Any size!



## CHRISSIE'S STALL MOVES ON

Chrissie would like to thank the good people of Foundry Square for their friendship and support over her four years in the cabin outside Pratt's Market, and also express her gratitude to all the members of the market for making her so welcome.

The cabin is in new hands and will

soon be selling fabrics, wools and haberdashery. A big welcome goes to Sue, who will be opening on February 19<sup>th</sup>.

Chrissie's stall will still be trading and can be found, as always, at many of the local fetes, shows and festivals throughout next summer. See you there!

*Many thanks, Chrissie*

## THANKS A BILLION

As the Chinese say, 'May you live in interesting times', and unfortunately, after the financial crash, this era certainly warrants that description. Scarcely a day goes by without another announcement that several billion pounds of our taxes are to be allocated by the government to some 'worthy' cause, usually the very banks who got us into this awful mess in the first place. I don't know about you, but personally I find it hard to get my head around the concept of a billion anything, and don't even get me started on trillions.

In an attempt to understand the concept of this gigantic number, here are some illustrative examples:-

*A billion seconds ago it was 1977.*



**W. J. WINN**  
FUNERAL & CREMATION DIRECTOR  
PRIVATE CHAPELS OF REST  
24 HOUR SERVICE

69 FORE ST  
HAYLE TR27 4DX  
01736 752124

&

TRENWITH TERRACE  
ST IVES TR26 1QUE  
01736 793029



A billion minutes ago Jesus was said to be alive.  
 A billion hours ago our ancestors were living in the Stone Age.  
 A billion days ago no one walked on the earth on two feet.  
 And finally, and astoundingly, in HM Treasury terms:-  
 A billion pounds ago, it was only yesterday!

**Taurufax**



## Love Baby Yoga

*Mums Love Baby Yoga...  
 Dads Love Baby Yoga...  
 Babies Love Baby Yoga...*

**EVERYBODY LOVES  
 BABY YOGA!**

CLASSES STARTING IN HAYLE  
**25<sup>TH</sup> FEBRUARY 2009**  
 WEDNESDAYS AT 9.30 OR 11.00AM  
 FRIDAYS AT 9.30 OR 11.00AM

Please contact...

**Mandy Adams**

on **07952 836190**  
 or [mandy@lovebabyyoga.co.uk](mailto:mandy@lovebabyyoga.co.uk)

### SINGER & PFAFF SEWING CENTRE

Authorised Singer Service Centre for Cornwall

*All makes serviced*

**11 ST. JOHN STREET, TRURO**

**01872 225168**

Mr & Mrs D.M. Cirling

How  
 badgers  
 Really  
 spread  
 T.B.



## Lent Lunches

This year Lent Lunches will be served at Hayle Methodist Church Hall.

They will be on **Saturdays** from 12—1pm, (after Rainbow Coffee House), starting on 28 February, for six weeks.

As before, the Hayle Churches will take it in turn to provide a simple lunch of soup and a roll, for a very modest £1.50.

## Lent Course

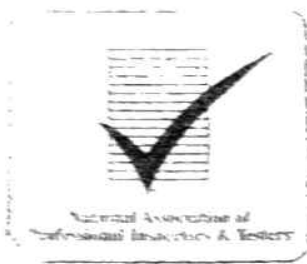
A series of Lent courses will be held at Hayle Methodist Church starting **Wednesday 4 March**, starting at 7.30pm for six weeks.

# Des Button

Springfield  
33 Clifton Terrace  
HAYLE TR27 4BP  
01736 753211

ELECTRICAL  
SERVICES &  
SUPPLIES

Part P  
Registered



## Computer /Laptop problems?

I can restore your computer or laptop to full working order for a fantastic price.

**NO FIX, NO FEE**

Call today for a FREE, no obligation quotation.

Call TeeCeeTech TODAY  
07730 283433

## Women's World Day of Prayer Service.

Friday March 6 2009

St Josephs R.C. Church 2pm

Prepared by Christian Women of Papua New Guinea.

Everyone welcome, men & women, refreshments will be served afterwards.

## Book Review

### LIGHT AIRS

This is the name of Hayle author Mary Baker's latest novel, released just after Christmas and of which I was the grateful first recipient and, even more exciting, found it was dedicated to me, so as you will appreciate I have special pleasure in recommending this as another excellent read.

As the title suggests it has a nautical flavour, the setting primarily being a sleepy seaside town out of season. But don't be misled by the somnolence, beneath the thin patina of unpleasantness it is a hotbed of tangled relationships, jealousies, hatreds and scores to settle - undercurrents that kept me turning page after page to try and tease them out.

I spent the first two-thirds of the book hoping against hope that the heroine was right and the final third terrified that she might be wrong!

What better way to occupy grey days at what we hope will be the tail-end of a cold winter than to immerse yourself in a hugely enjoyable book?

'Light Airs' is available in Hayle from Lee Prior, 27 Fore Street, Hayle TR27 4DX - look for Alliance & Leicester sign or tel. 753368 or order from any bookshop or via the internet from Amazon, Tesco or Waterstones. Mary's previous novels 'A Purposed Overthrow' and 'The Purpose of Playing' are available from the same sources.

Happy reading, love

Felicity

IF.....

*If you can start the day without  
caffeine  
If you can get going without pep  
pills  
If you can always be cheerful,  
ignoring aches and pains  
If you can resist complaining and  
boring others with your troubles  
If you can eat the same food every  
day and be grateful for it  
If you can understand when loved  
ones are too busy to give you  
any time  
If you can overlook it when those  
you love take it out on you when  
something goes wrong through  
no fault of yours  
If you can take criticism and  
blame without resentment  
If you can ignore a friend's limited  
education and never correct them  
If you can resist treating a rich  
friend better than a poor one  
If you can face the world without  
lies and deceit  
If you can conquer tension without  
medical help  
If you can relax without liquor  
If you can sleep without the aid of  
drugs  
THEN YOU ARE PROBABLY THE  
FAMILY DOG!*

## Flowertime

In our last issue Mark at Flowertime offered a bouquet of flowers as a prize. The lucky winner, who was amazed and delighted to have her name drawn out of the box was Mrs Watson of Lelant.

## Country Skittles ...



welcomes Pump readers  
of all ages.

4 traditional 9-pin skittle  
lanes

Restaurant & snack menu  
available at all times

Roast lunches served all  
day on Sundays

Fully licensed bar

Target shooting gallery

Crazy golf

Pool Table football

Air hockey Batak

Lots of traditional board  
games & many other  
games to play.

We cater for groups large and  
small, and provide an ideal venue  
for family get-togethers, birthday  
parties and works outings.

To get to us, take the B3302 out of  
Hayle towards Helston and turn  
right when you see our sign just  
past St Erth Praze. We are about  
half a mile up that road.

Booking in advance is advisable at  
busy times.

For further information ring  
us on 01736 850209



# O'DELL SIGNS OF ALL TYPES

Perspex fabrication  
and Boat Windows

Perspex lettering,  
Plastic, Engraving,  
Magnetic, Posters,  
Illuminated signs  
Signwriting,  
VINYL LETTERING  
for Vehicles & Signs

**HAYLE 01736 753656**

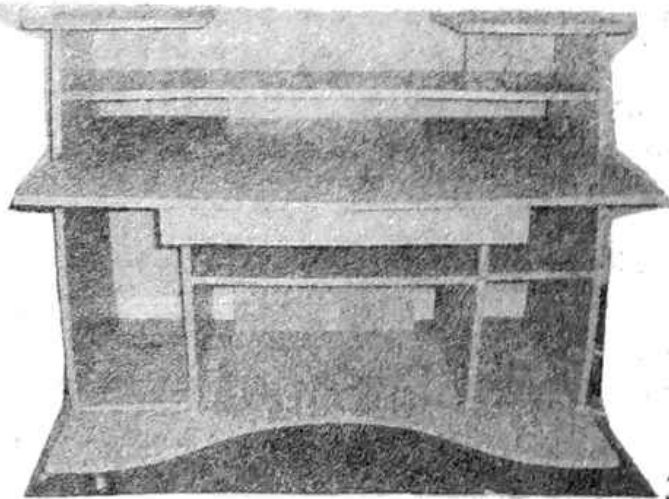
1, Turnpike Road, Connor Downs

## *NEW JEWELLERY STUDIO IN PRATT'S MARKET*

As we go to press, we hear that Lucy Kemp has started a new jewellery studio upstairs in Pratt's Market; Lucy also gives jewellery classes. See the next Hayle Pump for more details.

### **For Sale:**

Desk size 30" W x 45" L X 39" H  
£35 o.n.o. Ring Jeff 01736 752319



## **BIZ AND BYTES**

07974 647524

01736 755971

If you require computer assistance, either training or to resolve a problem then give us a call. Visits arranged to suit you.

[www.bizandbytes.co.uk](http://www.bizandbytes.co.uk)

[enquiries@bizandbytes.co.uk](mailto:enquiries@bizandbytes.co.uk)

Looking after the home user and small businesses. WEBSITES•BROADBAND• TRAINING•COMPUTER SUPPLY•TYPING

\*\*\*\*\*

### **Post-Christmas...**

The second day of a New Year's diet is always easier than the first. By the second day you're off it.

\*\*\*\*\*

### **An Open Letter**

*Would the person with the large dog who goes "walkies" late at night or early morning along Chapel Terrace, PLEASE pick up their dog's poo. Nearly every day there is dog mess left in little clumps outside our gates for us to clear up.*

*NOT nice – NOT necessary –NOT acceptable.*

*Mrs J Chaney,  
15 Chapel Terrace, Hayle*

### **A story from Barry:**

Sue and Bob had been married for years and were well known locally for not wasting their money. Bob had always wanted to go flying. The desire deepened each time the flying circus came to town offering rides. The price increased every year and was currently twenty pounds. Bob would ask, and Sue would say, "No way, twenty pounds is twenty pounds". They were getting on a bit, so one year Bob figured he would have to do it or else they would run out of time, so he got Sue out to the

All Aerials...26  
 Angove Sports...32\*  
 Auntie Maggie's Cakes...29  
 AWG-Solutions...17  
 Baby Yoga...35  
 Barton Print...27  
 Bigglestons...40\*  
 Biz & Bytes...38  
 Calmtime...19  
 Central Garage...10\*  
 CCC...10  
 Cliffords Plumbing...5  
 Colin's M'ket Garden...12\*  
 Computer Repair-IT...13  
 Country Skittles...37  
 David N'jie Painter...15  
 Des Button...36  
 Fancy Dress...17  
 Farm Shop...4\*  
 Fernleigh...11  
 Flowertime Florist\*...9

Foundry Furniture...6  
 Franklin, P.G...23  
 Gwithian Holiday Suites...7  
 Hayle Out of School...8  
 Hen Den...8  
 Hevl's Kitchen...4\*  
 J C Electrical...33  
 John Bennett...25  
 Katz Hair...22  
 Keast, F L...31\*  
 Kernow Elec & Plumb...28  
 Lindsay's Dog Groom...23  
 Michelle Denny...29  
 Neil Wade...24  
 O'Dell's Signs...38  
 Orchard, Alan...30  
 Passmore Edwards...3  
 Penpol Garage...15  
 Pet-Time\*...9  
 Philp's Pasties...18  
 Planet Showrooms...14

Plantech...13  
 Roy Hayes...11  
 Singer & Pfaff...35  
 Space Master...34  
 St Erth & Hayle Cars...19  
 Suites & Sofas...40  
 Sumo Hire...25  
 TeeCeeTech...36  
 Window Cleaner...16  
 Winn, W.J...34  
 Yoga...30

*You can pick up a copy at those marked with an\* also at Hayle Library, Hayle Day Care Centre, Hayle Community Centre, Bodrigny Health Centre, Copperhouse P.O., Martins P.O., Connor Downs P.O. Wyevale Garden Centre, and many other places.*

show, explaining "It's free to watch, let's at least watch". It wasn't long before they started arguing. The pilot, between flights overheard and listened as Bob explained the problem, and said "I'll tell you what, I'll take you both up, and if you don't talk, the ride is on me, but if you say one word, you pay the twenty pounds".

So up they went, the pilot doing as many rolls, dives and loop-the-loops as he could. But, not a word was spoken. Finally he admitted defeat and went back to the airport. "I'm surprised! Why didn't you say anything?" "Well", Said Bob, "I almost said something when Sue fell out, but twenty quid is twenty quid."

*Barry Thomas, former St. Erth boy*



## PHILLACK CHURCH QUIZ



**SATURDAY**

**FEBRUARY 21 AT 7.30PM**

**HAYLE DAY CARE CENTRE  
 TEAMS OF FOUR  
 £2 PER PERSON**

**TEAS & COFFEE AVAILABLE  
 BRING YOUR OWN BOTTLE  
 FREE SNACKS**

# BIGGLESTONS

TRADING IN HAYLE FOR OVER 100 YEARS

Please try us first for the best of Hardware,  
Ironmongery, Kitchenware, Paraffin  
and Garden Supplies.

01736 752219

*Summer. Autumn, Winter. Spring  
We can supply most everything*



## SUITES & SOFAS



ENDS OF LINE  
CANCELLED ORDERS  
FACTORY CLEARANCES

01736 759586

07779 760686

THE FURNITURE WAREHOUSE  
IS AT UNIT M  
ST ERTH IND. EST.  
NEAR HAYLE

