

ISSUE 88

JUN/JUL

2009



HAYLE PUMP NEWSLETTER

Circulation 2500 FREE copy, please take one. Made possible thanks to our advertisers.



Race for Life!

Penzance 3 June 7.30pm

See page 3 for details

Hayle Pump Newsletter,

Unit 9, Pratt's Market,
Chapel Terrace, Hayle TR27 4AB

email: haylepump@btinternet.com

Advertising Rates

Half page (130 x 95mm)..... £22.00
Quarter page (63 x95mm)... £12.00
Eighth page (63 x 42mm) ...£7.00

Editorial Team Members

Donna Anton (for adverts)

01736 753184

donna@donna-anton.com

Tim Appleton

Valerie Becalick-Ham

Brianna Breeze

Goudie Charles

01736 757351

Don Metcalf

01736 757720

Joy Scott-Mance

Jeff & Sarah Turk

35 Penpol Terrace Hayle

TR27 4BQ,

01736 752319

Closing date for next
issue:

20 July 2009

(adverts subject to space
availability)

The Hayle Pump would like to remind readers that items, or articles and Public Notices are accepted as points of view and are not necessarily the opinion of the Newsletter Team. Correspondents are reminded that all material submitted must be signed with their name and address, and if possible, telephone number for validation. This will not be printed if you don't wish it to be. We reserve the right to refuse or edit items sent to us.

You can leave your news, letters, notices etc. at our unit in the market, or with any of the team.

You can also use any of our drop-off points:

Biggleston's & Colin's Market Garden at Foundry,

Angove Sports & Jolly Bodger at Copperhouse.

Postal Subscription Service

For those readers who would like a copy sent to family or friends, or local people unable to get into Hayle, we operate a postal subscription service.

Simply send us the delivery name and address CLEARLY PRINTED, together with £2.50 and we will send a year's issue of 6 copies.

(U.K. addresses only). Please make cheques/postal orders payable to :

HAYLE PUMP NEWSLETTER

Race for life!!



Rose and Cabbage Gardening Club Show 28 & 29 July 2009

*Lilac pink's the colour,
You'll see them everywhere,
Schedules for the yearly show
For you and family to share*

*Take them home and read them,
Note the contents all,
It's not for gardeners alone
Other talents are on call.*

*Are you Nigella's rival?
Can you stitch a crafty seam?
Are your photos worthy of the
Fate?*

*Flower arrangements like a
dream?*

*Entry forms are waiting
They're in the centre fold
Let's make the 37th show
The Best for young and old.*

*In the Marquee at Hayle Rec-
reation Ground*

Our cover photo shows four Hayle ladies who took part in last year's race for life, from left to right Jo Patterson, Lynn Jones and Kris Gayle, all of Paradise Park, together with their friend Jean Philp, who all hope to run again this year. The race, which is in aid of Cancer Research UK, is a 5k women-only event, and takes place in Penzance at 7.30pm on Wednesday 3rd June. The race from Penzance to Newlyn and back attracts a big turnout of pink-clad competitors walking, jogging or running to help beat cancer, so even if you're not taking part, why not go along and contribute to the occasion, and the collection boxes? See www.raceforlife.org for more details.

Peter Thomas (Grounds Care)

Supplier of Seasoned Firewood
Cut to YOUR Length

Also:

Grass Cutting
Grounds Care
Tree Care
Field Maintenance
Fencing
Hedge Cutting
Tractor + Driver Hire

07816 594985

Hayle in Bloom

Since Easter there has been good and bad news. Hayle in Bloom Committee have received donations from various organisations; the money has gone to buy additional plants for the King George V Memorial Walk and Penpol Terrace.

These areas were devastated by the severe weather earlier this year.

The Hayle gardeners, Mike, Alvin and John have been busy planting them out.

The bad news, due to a few mindless people these plants were stolen only hours after being planted on 3 separate occasions. This has been devastating not only to the gardeners but to the people who use the walk. As you have recently seen in the local press, radio and local police, there was a high profile about

this matter. However, since the press release some of the stolen plants have been returned in 2 piles; left at both ends of the walk. Some are still unaccounted for, so if you have any information, however small, please contact the Hayle Police Station. We must say a **BIG THANK YOU** to those kind people and businesses who have donated money and plants. Your generosity has helped replace some of the stolen plants and the big areas of bare earth. Everyone is busy gearing up for the South West in Bloom Competition in July.

One forthcoming event is 'Hayle Community Celebration Day'. This will be on **Saturday 6 June commencing at 10 am**. It will be held in the wildlife garden behind the Library. There will be **FREE PARK-**

KIDZ R US

st ives theatre

DISNEY'S ALICE IN WONDERLAND Jnr.

Daily May 23 - 29 and every Thursday until the end of August (8pm)

A musical must for all lovers of the topsy-turvy world of this family favourite. The maddest of Mad Hatters, the busiest of White Rabbits and the craziest card game in the world.

LITTLE SHOP OF HORRORS

24-29 July and every Wednesday until 2 September (8pm)

This spoof 50s B picture rock musical is a treat for all the family, as shy, sensitive Seymour pours out his heart to a potted plant that is much more than it seems. Don't miss this fabulous, fun-filled, hit-packed sensation.

DAD'S ARMY

26, 27, 29, 30 June and every Tuesday from 4 Aug - 15 Sept (8pm)

Back by popular demand, a new staging of KRU2's successful 2007 production of this ever-popular show, featuring three hilarious episodes from the TV series. For a great night out, make a date with Captain Mainwaring and his company of incompetent soldiers.

THE ADVENTURES OF SOGGY THE BEAR

6, 7, 8 & 10, 13, 14, 15 & 17 July (10.30am and 1.30pm)

A stage adaptation of the famous 'Soggy the Bear' stories written by Master Mariner Philip Moran and illustrated by Michael Foreman. Performed by young adults under the direction of Sarah Lincoln.

For tickets, contact the Theatre Box Office: 01736 797007

ING available at the Commercial Road Car Park. There will be **FREE** refreshments plus lots of activities for the children and family. The day will include entertainment of Music and Singers. Please come along and support this event.

Our next meeting will be held on Monday 29 June at Hayle Rugby Club commencing 7.30 pm. Please come along if you are interested or look at our website

www.hayleinbloom.co.uk.

Until the next time.

Ingrid Kemp – Secretary, Hayle in Bloom

Kate DeWreede *Guitar Tuition*

Acoustic, Electric & Bass
Guitar Lessons

Music Theory, if required

Tel: 01736-753709



MILLPOND UPDATE

As you will all have probably noticed by now, the situation with the water levels has not been resolved and it appears that it will be allowed to remain in its present woeful state. Having stopped the water leaking through a breach in the bank by the outflow, the Environment Agency has decided to take no further action to repair the bank. It has been wrongly alleged that the water was kept artificially high to cover the silt, which is an excuse for doing nothing. There was no way that we could have carried out such activities. We know that the silt is there and because Millponds are classed as Main River and carry

(5)

BWOC **CENTRAL GARAGE**

• **CAR SALES**

• **FILLING STATION • SHOP**

Hayle – 01736 755885

Suppliers of Calor gas • House coals
• Barbecue coals • Logs

A wide range of car accessories:

• Oils • Lubricants • Lamps
• Antifreeze • Batteries • Auto Glym
car cleaning range – *and much more!*

• Groceries • Milk • Tea • Coffee
• Snacks • Sweets etc

Friendly service - Open 7 days a week

Monday to Saturday 7am-9pm

Sunday 8am-9pm

85% of the water from the local catchment area, the levels rise and fall naturally when it rains. Therefore, there is no justification for the destruction of so beautiful and iconic a place as our Millponds and I can only hope that someone in authority will see how that outcome can be avoided before it is too late.

In the meantime, we will continue to watch over our wildlife as best we can. Although most of our ducks are away at the moment, about twenty, together with Ollie, our snowgoose, and a dozen moorhens still remain on the ponds. We have had two broods of ducklings and, in spite of the usual predation by sea-gulls, six appear to have survived and there are two small broods of moorhen chicks.

The swallows, martins and swifts have returned and swoop around the margins collecting mud for their

nests. The bats have also emerged from hibernation to hunt the midges as the sun goes down.

We do have a rather unusual pair of ducks which arrived just over two weeks ago. The shelducks that normally live on the estuary appear to have mistaken our mudflats for Carnsew Pool and set up home on the Inner Pond. If they have actually nested it will definitely be a first for us and the only positive outcome from the present state of the ponds.

The Millponds are worth fighting for and we would greatly appreciate all

this tranquil haven for our wildlife restored again as soon as possible.

Georgina Schofield

Volunteer Wildlife Warden

Welcome to Penpol Terrace

Two new businesses have opened up in Hayle.

'Inspirations' which is in the former premises of Geoff Murt's TV shop at No. 32 Penpol Terrace is owned by Paula Hendra, and sells gifts, cards, jewellery and lots more. Paula also has outlets in Camborne and Helston.

'Hayle Home Furnishings' selling new and used furniture is owned by Alan Williams, who also has an old established shop in Helston, so if you don't see what you want there is a very good chance he can provide it from his main shop.

He is trading at the old 'Mysteries' shop at No. 36 Penpol Terrace.

HAYLE HOME FURNISHINGS

(J.C. WILLIAMS OF HELSTON)

STOCKING NEW AND USED FURNITURE

**BEDS AND MATTRESSES
STOCKIST OF SILENTNIGHT, SEALY, MYERS
ALSO MEMORY FOAM
PILLOWS, MATTRESS PROTECTORS,
DUVETS, CUSHIONS, RUGS**

***VISIT OUR NEW SHOWROOM AT:
36 PENPOL TERRACE, HAYLE***

CONTACT ALAN WILLIAMS 0794 962 0194

The Pump wishes them good luck in their respective ventures.

Please do remember to support local traders, it is all the little shops that make our town special.

SINGER & PFAFF SEWING CENTRE

Authorised Singer Service Centre for Cornwall

All makes serviced

11 ST JOHN STREET, TRURO

01872 725168

01736 753811

HAYLE ORAL HISTORY PROJECT LAUNCH

The popular Hayle's Tales Event has launched Hayle Oral History Project at the old Brewery Office, 1 Sea Lane. Hayle's Tales and all its activities from the heritage and nature walk and the guided bike ride to fascinating talks by local historian Brian Sullivan and archaeologist Paul Bonnington, the exhibition of archive photos, clips from recorded interviews, archive film and the world premiere of the animation film "Winnie's Day Out at Hayle Regatta" made by school children from Bod-riggy, Connor Downs, Gwinear, Leedstown and Penpol schools were all a hit, especially washed down with original Ellis Brewery Ale – the recipe for the original brew that was made on Sea Lane in Hayle and eventually became St. Austell Brewery. Adults were able to look at the exhibition and listen to recordings or talks as their children

GWITHIAN HOLIDAY SUITES

Visit Cornwall/English Tourist Board Self Catering **3 Stars**

4 Self Catering Suites.

All 4 Suites with Bath/Shower/wc fully equipped Kitchen, Dining area and Lounge with comfortable seating, Colour Tv/Dvd etc.

Linen, Towels, Electricity and Heating are included in tariff.

Garden with Barbeque.

Parking space. Access at all times.

Breakfast available. Credit Cards accepted. Open all year.

Suite 1

Bedroom with Double bed and single bed.

Suite 2

2 Bedrooms (Double and Double and Single).

Suite 3

2 Bedrooms (Double Bed and Twin beds).

Suite 4

Double bedroom.

Surfing Tuition, Board & Wet-suit hire available from a **Top Level England Surfing Coach** used by several local schools.

Telephone:

01736 756560 / 755493

Website:

www.gwithianholidays.com

email:

trevorgreenaway@hotmail.com



KERNOW ELECTRICAL & PLUMBING SUPPLIES LTD

8 Hayle Terrace
TR27 4BS
01736 758491

OPENING HOURS:

MON-FRI 8 to 5 – SAT 9 to 4

For all your electrical & plumbing needs. Trade & public welcome. We sell everything from Hoover belts/bags to cable, lighting, lamps & tubes, domestic cooking elements, batteries & computer accessories – plus a large range of low-energy lamps. Vacuum repairs & garden machinery servicing.

were entertained by listening to and acting out Angie Butler's version of King Teudar who lived on Riviere Towans. "I was so pleased that so many people came. We would love to get your feedback about the event and our funders need it so please contact me with your comments, both positive and critical!" says Lucy Frears the Hayle Oral History Project Coordinator. "I know that we need a bigger PA and a microphone next time. We hadn't dared expect the numbers of people of all ages and were delighted that people were so animated chatting to each other but I am sorry that it was a strain for people to hear the talks and film." The animation film is now available to watch on the project's blog along with audio clips

gotataleaboutthayle.blogspot.com
or through the Harvey's Foundry Trust website

www.harveysfoundrytrust.co.uk

"Our volunteers were amazing at the launch. Special thanks go to Nancy, Cheryl, Pat, Tamsin, Sarah, Iris, Merril and Derek. We're always looking for more volunteers - people who would like to be interviewed about Hayle in the 20s, 30s and 40s as well as people that want to learn to record the interviews or transcribe them. "The Hayle Oral History Project works closely with Hayle Community Archive and would like to scan original photos and postcards of the Hayle Area to add to the archive. "At the moment we have few or no photos of Connor Downs, St. Erth, Angarrack, Gwinear and Ventonleague, we're also on the hunt for old archive film footage shot by anyone on any format." The photos of workers at J&F Pool during the war were a great hit at the launch and kindly loaned by Imperial War Museum. "We'd love to hear from anyone in the photos", says Lucy, "if anyone wants copies they can be purchased easily from the Imperial War Museum website www.iwmcollections.org.uk just put in "Hayle" in the photo search box. We have copies of the order form at the office as well." "Congratulations for a well organised event with a great turnout" said Hayle Mayor, John Coombe, "and for recording details of the past from people of our town that will be kept for future generations, thank you." Hayle Oral History Project contacts:
Tel: 753962

Email: hayle.history@btconnect.com

Website:

www.harveysfoundrytrust.co.uk

HAYLE YOUTH PROJECT

The Hayle Youth Project will be running holiday activities during the next half-term and throughout the summer holidays for 12 to 19 year olds. There will be art workshops, beach BBQ's, walks and various trips out as well as a whole programme dedicated to the Hayle Oral History Project.

For details and registration, please contact the Hayle Youth Project on 01736 755790.

PRATTS MARKET

Two units will be available shortly at a reasonable rent.

Please contact Andrew in BK Video at the rear of the market or phone him on: 01736 755227

Anila

I have been obsessed about anything that is unique and different from the time I can remember. That coupled with my love for clothes and accessories has given birth to this shop "Anila". That's what I decided to call it, no, don't mistake this for narcissism, it's just that I like to be remembered through what I do. Unique as they are, every single piece has been picked up especially

Flowertime florist

**17 Penpol Terrace, Hayle
0800 056 0711**

**Voted 1 of the top 250
florists in the U.K.**

Bouquets, arrangements, hand-tied, funeral tributes & more delivered locally, nationally and internationally to the Door. Over 3,000 Greeting Cards in stock. Plus Gifts, Luxury Cornish Chocolates

Hayle Loyalty Card welcomed

www.wesendflowers.co.uk

Pet-Time

**At the back of Flowertime
01736 757006**

Best pet shop in Hayle

Full range of pet foods including Burns, Hill's Royal Canin, James Wellbeloved, Dr John's, Bakers.

Large range of Wild Bird Feeders & Seeds

Beds, Collars, Leads, Toys.

Special order service available



**JEN BUTTON (ROWE) OFF
TO AFRICA FOR CORNWALL
HOSPICE CARE**
(Please come to my bazaar!)

In order to raise money for Cornwall Hospice Care I shall be taking part in a sponsored challenge and community project in Tanzania, in August this year. I shall be attempting to climb Mount Meru, which is the fourth highest mountain in Africa. After that, I will move towards the coast to help to build part of a primary school (I think it may well be the digging out and laying of foundations).

I have been moved to taking on this challenge as I wanted to do something to raise money for St Julia's Hospice, following my Mum's death last year, as they let her borrow equipment which enabled her to remain at home for her last days. Having been involved with Brownies in Hayle for about 25 years and having been teaching for 7 years, the education and welfare of children is important to me. This challenge will not only enable me to witness first hand the day-to-day life of African children but will allow me the opportunity to work with local villagers to create something which will support them in the long-term. It will also be wonderful to be able to return and share my experiences with both the Brownies and the students at school.

The challenge is also forcing me to look at my own fitness levels, as the climb promises to be tough. I have been fortunate enough to find

R	ROY
H	HAYES
G	GLASS

For all your glass & glazing needs including greenhouse glass & mirrors

Unit 2, Prykernow
Penpol Avenue
Hayle TR27 4NQ
Tel/Fax: 01736-754023
Mobile: 07880-530795

with you in mind, with a lot of deliberation.

I am sure you will love them and want to wear them, so do pop into my shop. I'm here for you from 11am - 4pm on Monday & Wednesday, 1pm - 5pm on Friday and all day Saturday.

Anila, Unit 3, Pratt's Market, Hayle
Tel: 0788 976 7851

Mark's Sumo Hire
Fun for everyone

Corporate fun days,
parties, charity events,
special occasions
and loads more...

Call Mark for more info

01736 756384 or 07766631446
All enquiries welcome



Caroline from Love Life Personal Trainers who, together with her colleague Matt, is putting me through my paces, and I would recommend either of them to anyone needing to increase their fitness levels. They can be contacted at onetoonelive@live.co.uk – visit their website www.lovelifept.com for more information.

Since September, I have been raising sponsorship funds. My aim is to raise £3,500 and I have managed about £2,500 so far. One of my fundraising activities is to hold a bazaar. I have booked the Day Care Centre Phillip Smith Annex for the morning of Saturday 27th June and will be having stalls for cakes, books, arts & craft, a tombola and miscellaneous goods (not clothes, unless new) as well as some com-

petitions. I would be very grateful if you could provide some items for one or more of the stalls – maybe a cake, or an unwanted present or two – and if you could come along on the day to support me in some way, that would be terrific.

If anyone would like to sponsor me, I have also set up a webpage www.justgiving.com/jenbutton

I would also like to take this opportunity to thank everyone who has helped me in my endeavours so far – whether it be selling my quiz sheets, donating items for the bazaar, holding raffles, joining my 100 club, and other things too countless to mention here.

If you have any questions about the challenge, I would be pleased to chat with you about it.

Jen Button (01736) 751743

bluff

Riviere Towans, Hayle

Come and visit The Bluff Inn!

Great views and fantastic value meals
starting from just £4.95!

Open from 9.30am every day,
main meals served from midday!

Sylvia's Classes at the Passmore Edwards Institute

Monday 6.30—7.30pm
Step Aerobics
Wednesday 6.30 -7.30pm
Body Workshop
Thursday 10am—11am
Over 50s Music
and Movement

Cost £3.00 per session

Info: Sylvia 757560



HAYLE CARNIVAL SATURDAY 1 AUGUST

Hayle Carnival Queen and attendants for 2009, are Mollie Jame Clemens age 5, Jean Goldbann age 12, and Georgia Carter age 7. It was difficult for the judges to choose as they all looked and spoke so well and we thank them all for attending.

We now look forward to a bumper entry for the Carnival. For more information phone

R. Horwell 01736 752597 Email richardhorwell@btinternet.com

IN HOME COMPUTER REPAIR

AWG-Solutions

In Home & Small Business Computer Support

- No Fix - No Fee
- No Callout Charge
- Fast, Friendly, Local Service

Tel: 01736 757580



Council Corner

June/July 2009

New Mayor and Deputy

At the Annual Council on May 14th, Councillor John Coombe was unanimously elected Town Mayor for 2009-2010 for the second consecutive year. John, a life-long Hayle man, said that he will continue to serve the town to the best of his ability. John's wife Lorna will continue in her role as Mayoress.

Councillor John Bennett was once again unanimously elected Deputy Mayor and his wife, Donna Anton, is Deputy Mayoress. The Mayor's Annual Report 2008-2009 can be found on the Town Council's website.

Hayle Open Air Swimming Pool

Following further improvements to the facilities, the Swimming Pool will be reopening for the summer season on 23 May 2009. This season, for the first time, Free Swimming will be available to those aged 60+. Season tickets will be available at £40 for an adult and £30 for juniors. Additionally a FAMILY TICKET has been introduced at £10 offering a maximum of 2 x Adults plus up to 4 x Juniors use of the swimming pool for the entire day of issue. The pool

will open to the public daily from 10am until 6pm. It is hoped that the people of Hayle will continue to support the pool and enjoy this superb outdoor facility.

Cemetery Extension and Allotment Update

A huge amount of progress has been made in the last few weeks to secure these vital facilities for the town. After prolonged negotiations with the current owners the point has been reached where an application has been submitted for those elements of the scheme that require planning permission. Having carried out pre-application discussions with the relevant officers at Cornwall Council it is hoped that a decision will be reached in the future. Once planning permission is

18 Commercial Road
HAYLE
TR27 4DG
01736 753145



21 Alverton Street
PENZANCE
TR18 2QP
01736 366106

Bring this
advert
in for
10%
off
complete
spectacles
£75 and over

Excludes offers
and promotions
already
discounted



granted, the lease will have to draw up and the construction works will have to be completed. This includes the building of an entrance, access track, footpaths, installation of water and fencing etc.

The proposed site is located off Lethlean Lane immediately to the south of the closed cemetery at Phil-lack. It is hoped that the majority of persons on the allotment waiting list will be accommodated.

We have deliberately not put a time frame on it yet because we don't want to get into the situation that people's expectations are raised prematurely. It will be as soon as possible - autumn time hopefully.

Civic Service and Parade

The Mayor's Civic Service and Parade will take place on the Sunday 26 July 2009 and will signal the

commencement of Heyl Fest. Further information on the above and other local issues can be obtained from the Council website at www.hayletowncouncil.net.

Eleanor Giggall, Town Clerk.
townclerk@hayletowncouncil.net

**Hayle Town Council, Hayle
Community Centre, 58 Queen-
sway, Hayle, TR27 4NX
01736 755005**

The following was read recently in a newspaper: If a compact fluorescent light bulb is broken in your home, the room should be cleared for 15 minutes because of the danger of inhaling mercury vapour.

Corn Mill Studio

Save your memories forever!

Your precious old family cassettes or reel to reel recordings from the past can be restored and edited, then transferred onto CD to last forever.

Family photos can be added to the CD and on the cover etc

Or, do you fancy singing a popular song for fun, or a love song, or poem or message for a special person?

We can provide almost any full musical backing track for you to record your sung or spoken words to.

You could tell a story or record family history that then cannot be lost or forgotten.

All this, and we also do of course real digital recordings for Singers, Musicians, Poets, Groups, Performers, Storytellers, etc

Also we provide PA and sound system hire for events and weddings or parties with or without operator. Special rates for 2009.

Your local recording studio. Now offering CD & DVD Duplication

Contact: Steve Nunn

The Corn Mill Recording Studio, Old Mill Lane, Roseworthy, Camborne. TR14 0DX
Telephone 01209 719481 Email cornmillstudio@aol.com www.cornmillstudio.co.uk

HAYLE LIBRARY

Hayle Library is blooming with free books to read, or free use of a pc for work or pleasure. We have some of the latest movies and also games for Wii, Nintendo and Playstation.

Our Hayle in Bloom Community Garden hosts its 1st birthday celebrations on June 6th from 10am – 3pm. Entertainment and refreshments will be available and everyone is very welcome to attend. Storytelling with Claire for our younger age group is from 10.30am – 11.30am, and also from 1.30pm – 2.30pm. The garden is a beautiful tranquil place to sit and enjoy the wildflowers, watch the birds and wonder at the antics of our native insects, butterflies and bees.

Would anyone like to join a Stitch 'n' Bitch group? A group of people interested in knitting and sewing will be meeting in the Library first Tuesday of each month at 2pm – 3pm, starting Tuesday 2nd June. Everyone brings some knitting or some sewing and it doesn't matter if you are a total beginner or an expert. Please contact Sue if you are interested or would like further details, or just come along.

Do you know anyone who loves to read but is unable to visit the library due to illness, age or disability? We run a free delivery service with the help of WRVS volunteers. If you are interested in this please phone or write to Sue at the Library.

This year's Summer Reading Scheme starts on 18th July. The theme is a quest to find the Golden

PLANTECH

THE FRIENDLY RELIABLE SERVICE

- Lawns cut and borders weeded
- Hedges trimmed
- House, garden & building waste taken
- Garden clearance work
- Gravel, sand, topsoil delivered & laid
- Garage and loft clearances
- Free no obligation quotes

(Tel) 01736 754401 / 07979546434



Penpol Garage

IN TUNE WITH TECHNOLOGY

All makes of vehicle repaired & serviced

**Air-con re-gas £40.00 + vat
Full diagnostic capabilities.**

Tel: 01736 757011

Mob: 07921 218 448

**17a Penpol Terrace, Hayle
(Near Hayle Train Station)**



MOST MAJOR CREDIT CARDS ACCEPTED

Registered member of...
GoodGarageScheme.com

Book. There will be bookmarks, dragons, mazes, medals to collect and certificates. Fun for all the children for ages 5 to 12 approximately and it's great for keeping the children occupied in case of bad weather during the summer holidays.

Every Monday from 10.00am – 11am Todlins entertains the under fives. There is an explosion of singing, dancing and making music where parents and toddlers can socialise and make new friends. There is a charge of £3.50 each week, £2.50 concessionary and £6 for 2 siblings.

Children's story time at the Library with Claire is every Wednesday from 3.45pm- 4.45pm. Everyone is welcome and there's lots of fun with activities and stories.

The Reading Group who are aptly name Chapter and Verse meet in

the Library at 2pm on the 1st Wednesday of every month. They are a very friendly group and enjoy reading and discussing a variety of books. New members are very welcome.

If you are over 60 and haven't yet applied for your bus pass, please pop along to see us with 2 proofs of address and 1 proof of eligibility. We have the application forms here but please remember we are closed all day on Thursdays. If you are unable to visit the Library during the week please ask about a Saturday appointment.

On July 29th Hayle Library welcomes the quirky, silly, crazy, comical, ingenious, ridiculous, inspiring, surprising, educational, ecological world of the famous Squashbox Theatre! This is entertainment extraordinaire for 5- 12 year olds approximately. Please contact the

COLIN'S MARKET GARDEN



THE SIGN OF
FRESH
FRUIT & VEG

find us at
THE FRONT
PRATT'S MARKET
FOUNDRY SQUARE

JUST
LOOK
FOR THE
FLAGS!!

LOCALLY GROWN STRAWBERRIES

IN
SOON BEANS AND TOMATOES

BUNCHES OF SWEET NEW CARROTS

PLUS OTHER SEASONAL CORNISH PRODUCE
AVAILABLE THIS SUMMER AT

COLINS MARKET GARDEN

SUPPORT YOUR LOCAL TRADERS



THAT WILL CUT DOWN YOUR FOOD MILES

Library for further details.

The Library is open to everyone and most of it is free. Please pop in and see what we have to offer, a warm welcome awaits you.

If you would any more information please contact Sally, Sue, Claire or Emma.

Library Line 0300 1234 111.

Love Baby Yoga

HAYLE & ST. IVES
MONS, WEDS & FRIDAYS



CLASSES FOR BABIES &
TOTS UP TO 2 YEARS

www.lovebabyyoga.co.uk

07952 836190

THE NATIONAL AUTISTIC SOCIETY

WEST CORNWALL BRANCH

For anyone with a family member on the Autistic Spectrum (AS) the West Cornwall Branch of the N.S.A. can provide valuable support and information. Parents, carers and families can meet and support each other at regular meetings, social events and outings.

The meetings provide information and ideas about autism, often with guest speakers and there is a library with a wide range of AS-related books available to borrow. They are a great way to meet other parents and carers and discuss any problems or worries you may have; as a parent of an autistic child myself it

Fernleigh

BED & BREAKFAST

En-suite, Colour TV,
Coffee & Tea making
facilities in all rooms.

NON SMOKING

26 Commercial Road

HAYLE

Cornwall

TR27 4DG

01736 752166

mikelynreffold@fernleigh.fsbusiness.co.uk

Mike & Lyn Reffold

has been really helpful to me.

There are usually several outings arranged throughout the year, we have visited Trevarno, Trebah, Cornish Birds of Prey among others. We have also hired a bowling alley and cinema and it is a great relief to have an outing where you know your child's behaviour will not be frowned upon.

The branch runs a Saturday swim club and there is an adult's social group.

Forthcoming events are:

7th June: Train Walk, 12 noon
Longrock Car Park.

A sponsored walk with a difference! The money raised will help our branch to support people with autism of all ages in our local area. Adults pay £1 registration fee and the whole family raises sponsorship



Want to play music?
You're never too old!

I'm a coach, former session musician (guitar, bass, harmonica), and a Registered Guitar Tutor. With over 30 years' experience, I specialise in helping you learn in your own way, to read music or play by ear. I teach acoustic and electric guitar, bass guitar and blues harmonica.

Learn music the fun way
with Graham Smith.

Call me on 01736-740141
(based near Penzance)
graham@calmtime.com
www.calmtime.co.uk

money. The walk finishes at Marazion playpark where the children can let off steam, and why not bring a picnic?

10th June: Coffee Morning, 10 am – noon, Penzance Leisure Centre.

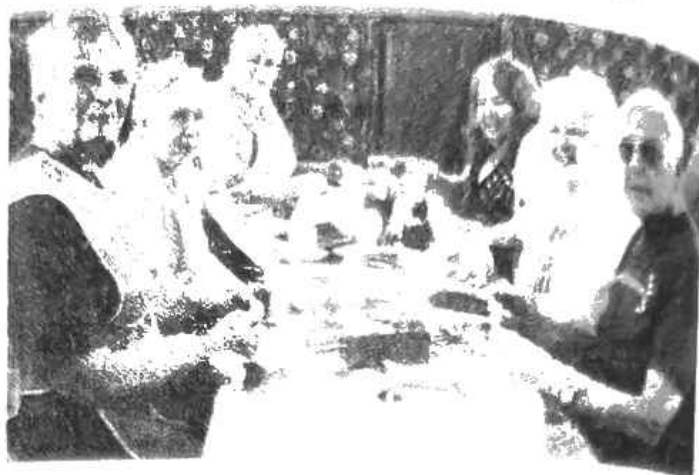
25th June: Open Meeting, 7.30 pm, Penventon Hotel, Redruth.

Speakers Mr. Nick Megson from Broomhayes School, a specialist school for autistic children in Devon, and Jenny Pheby from the Mental Health Project, who is involved in the new Cornwall Asperger association. Everyone welcome.

18th July: Lappa Valley Railway family outing, details TBC.

For further information on the branch, please contact me, Brianna Breeze (committee member), on 01736 753920 or e-mail westcornwall@nas.org.uk

Big Breakfast



Time for the workers to relax and enjoy the meal.

The annual Big Breakfast in aid of Cancer Research was held this year on 18 April. An amazing total of £1,030 was raised, thanks to the generosity of those who donated the food, those who prepared and served it and also of course to those people who came and ate it.



David N'jie
Painter & Decorator

10 Chenhalls Close
St Erth, Hayle (mobile) 07944 156995
TR27 6HY (home) 01736 756288
dn-jiepainter-decorator@hotmail.com

Pilates & Wiggle come to Hayle

I'm Emma, a fully qualified Pilates instructor now bringing my experience to Hayle, at the Cornwall Chiropractic Clinic in Foundry Square. I offer group and private tuition from rehabilitation to advanced levels and ante-natal. Private sessions are tailored to the in-

dividual's need including a fitness assessment and can also be shared with a friend. Pilates exercises will change the way you move, feel & look when practised regularly & correctly. I hope you'll want to join me in discovering this safe and effective exercise form.

Booking is essential for private tuition at the Clinic every Wednesday between 3.30 – 7.30pm, call them directly on 01736 759099.

I also have a new beginners group class starting in Hayle every Wednesday 8 -9pm from 10 June at the Phillack Hall on Copper Terrace.

My background is in dance and I trained in Dance Movement Therapy. As a Dance Leader I have worked with different abilities in education and a range of community settings, specialising in Toddlers'

Creative Dance for the last 10 years.

I'm now leading WIGGLE for children aged 2-4 years at the Passmore Edwards Institute on Hayle Terrace every Thursday from 9.30-10.15am. Parents and carers get involved in the session which explores dance whilst developing co-ordination and mobility skills through a variety of dance styles, music and props. Sessions are run on a drop in basis so why not come along and join in the fun!

For further information please call me on 0787 948 3106 or see my website.

www.emmas-pilates.co.uk

A definition of politics: The career of plundering and blundering. (Disraeli)



CORNWALL CHIROPRACTIC CLINIC
 ——— maintaining your lifestyle ———



Chiropractic
Diet & Nutrition
Podiatry
Yoga

Sports Injuries
Holistic Therapies
Rehabilitation
Pilates

21 Foundry Square, Hayle
 01736

www.cornwallclinic.co.uk
 759088

Heylfest 2009

26 July - 2 August

Sunday July 26

7.30pm

Community Songs of Praise

Monday July 27

10.30am - 4pm

Children's Fun Day

Tuesday July 28

2pm - 7pm

Rose and Cabbage Gardening
Club show.

Wednesday July 29

10.30am - 3.30pm.

Rose and Cabbage show. Prize
giving at 3pm

7.30pm - 10.30pm

Band Concert with Pendennis,
Gweek and Heyl.

Thursday July 30

10.30am - 5pm

St Julia's Hospice Fund-Raising
Day.

7.30pm

3 Choirs Festival with Treverva,
St Stythians and Heyl

Friday July 31

10.30am - 5pm

Community Market Day.

8pm - 11pm

The Galloping Horse Race Night



Saturday August 1

10.30am - 4pm

The Modellers Day with Model
Trains, Planes and Boats

7pm

Heyl Summer Carnival

9pm - 11pm

The De Hons Kemjot Oompah
Band.

Sunday August 2

10.30am - 5pm

Heyl Fun Day.

7.30pm - 10.30pm

Grand Finale Concert with
Camborne Town Band.

Phillack Craft Fair

Local Arts & Crafts
Demonstrations.

Scrumptious Cream Teas

Phillack Church

26 July-2 August 1-6pm

Rotary Club

Classic Car Show

Rugby Club

Saturday 1 August



Hayle Carnival August 1st

Letter

Memories

There must be hundreds of Pump readers in my age group, who remember the Good Old Days of the 30s, 40s & 50s. We didn't have any seatbelts or airbags and, sitting in the back of a 'pick-up' was a treat. Our baby prams had the most gorgeous lead colours. No such thing as 'tamper proof' bottle tops. Opening kitchen cupboards was a breeze as safety locks were unheard of. Cycling was a breath of fresh air - no safety helmets, kneepads or elbow pads, with plenty of cardboard between spokes to make it sound like a motor bike. We could leave our bikes in the hedge, outside of the station - go to town and upon our return the bikes would still be where they were left. When thirsty, we only drank well water or, if lucky, tap water. Bottled water would have been a mystery. We kept busy collecting bits and pieces so that we could build all sorts of imaginary things, and we were fearless of our bikes even when the brakes failed going downhill. We showed off how tough we were by climbing up trees, then jumping down. It was called fun. We could stay to play out for hours as long as we were back for our meal or before it became dark. We walked to school or, if lucky enough to own a bike, we rode that. We had no mobile phones but managed to find each other. How? No-one knows. We lost teeth, broke arms and legs, got cuts and bruises and bloody noses, but no-one complained because we had such fun. It

The Farm Shop

31 Penpol Terrace
Hayle

Open 6 days a week
8am - 5pm

For all your local produce,
fruit, vegetables, plants &
flowers, free range eggs.
Cornish potatoes.

Now In:

Cornish New Potatoes,
Bedding plants,
Strawberries,
Raspberries.

was no-one's fault but our own. We ate everything in sight - cakes, bread, chocolate, ice cream and all other sugary things, yet we stayed skinny by actively fooling around. And, if any of us had a bottle of pop, we all had a friendly swig from it and, guess what? No-one picked up any germs. We didn't have any Playstations, MP3s, Nintendos, I-Pods, video games, 99 channel TVs, DVDs, home cinema, mobile phones, PCs or chat rooms over the internet but, we had real friends. We called upon friends to come out to play. Never rang the door bell - just went around the back. We loved being let loose in the big not bad world without bodyguards or chaperons. We played with sticks and stones, played cowboys and Indians, doctors and nurses, hide and seek, plus

ALAN ORCHARD & SONS

APPRENTICESHIP SERVED



PROFESSIONAL TRADESMEN

CARPENTRY & JOINERY

uPVC FASCIAS

ROOFING, BUILDING,

DECKING

KITCHEN FITTING

01736 756687

07787 148571

27 GUILDFORD ROAD

HAYLE TR27 4PP

*soccer games over and over again
When we failed our exams we were
given a second chance by simply
repeating the same grade - without
visiting psychiatrists, psychologists
or counsellors. Such were the days
when we had freedom, success,
disappointments and responsibilities.
We learned to respect others.*

*Are you from that generation? I
know I am - they were the good old
days with no hatred towards one
another - unlike today. If there are
still any of my old school-friends
reading this, they can e.mail me at
bar-jun@tiscali.co.uk*

**Barry Thomas - Illogan (former St
Erth boy in the 40s & 50s)**

Anagram:

Presbyterian - Rest in Prayer

HEYL ST. PIRAN SINGERS

It's nearly a year since we came together in our present format. Since then, we have sung Christmas Carols and taken part in our first concert as guests of the Praze Hayle Male Choir.

On April 5 we proudly sang at a member's wedding blessing, our first public outing in our new uniforms. The following Sunday saw us guesting with the Praze Hayle Male Choir at St. Eiwyn's Church.

We sang "All in the April Evening" by Hugh Robertson, "I could have Danced all Night", by Loewe, "Bali Ha'i" by Rogers and Hammerstein, "This is my Song" by Charles Chaplin, and, of course, our "piece de resistance", "La Cumpasita" by Rodriguez. Very much a case of "It'll be alright on the night" and it was!

We are now preparing for concerts with the Male Choir, at St. Anta's Church, Carbis Bay, on July 12 at 7.30pm: Hayle Mayoral Civic Service and an afternoon of singing at Camborne Community Centre on our own.

We thoroughly enjoy ourselves singing a wide range of music from the shows through to secular. If you would like to share in the fun, come along to our informal practices on Thursday nights, 7.30-9.30pm in the Methodist Church Hall. We are holding an Open Evening on July 2, with refreshments.

You can contact our Musical Director, Ann Birch, on 01736 752335, or our Secretary, Teresa, by e-mail

teresadavythomas@btinternet.com.
We'd love to meet you. You don't
need to read music, just enjoy it.
You could even bring along a friend.
Elaine Farrell – Publicity Member



RSPB NEWS

The hot news here concerns a flock of 9 Cattle Egrets which turned up at Lelant Water on 25 February from out of the blue. Still a major rarity in Britain, they have been seen almost daily since, although often only for short spells each time. Otherwise, the winter has produced the usual array of wildfowl and waders with occasional Yellow-legged, Glaucous and Medi-

terranean Gulls adding interest. A Garganey in early February was presumably a wintering bird but the common Sandpiper on 4 March and flock of 20 Sandwich Terns on 28 March were a sign that spring had officially arrived. On 1 April 2 Whooper Swan turned up on the

Estuary, followed by 2 Kentish Plover on 19 April. If you were looking up to the sky over the Estuary, you may have seen the Black Kite on 12 April or the Osprey on 3 May. On 10 May, a Marsh Harrier flew over and 20 Red Kites passed on 11 May.

News in Brief

Our next beach clean at Carnsew Pool will be on 21 June.

• Man prosecuted by Natural England for reckless disturbance of the Site of Special Scientific Interest af-

J C ELECTRICAL

Your complete 24 hour Electrical Service

City & Guilds Qualified

Tests to BS7671

*Rewires, New Build, Lighting, Extra Sockets,
Showers, Heating*

Prompt Reliable Service
All Work Guaranteed

Free Estimates
Part P registered

Tel: 01736 754543
Mobile: 07739 577 549



BARTON print

Tel: 07799 411525
Fax: 01736 757022

Quick Reliable General
Printing Service

JUST A SMALL SELECTION OF THE SERVICES WE OFFER!

- BUSINESS CARDS
- COMPLIMENT SLIPS
- NCR PADS / SETS
- LEAFLETS
- MENU'S
- NEWSLETTERS
- ENVELOPES
- LARGE FORMAT PRINTS
- LETTERHEADS
- OVERPRINTING
- RAFFLE TICKETS
- B/W COLOUR COPYING

COMPETITIVELY PRICED

1 Turnpike Road, Connor Downs

Telephone 07799 411525 01736 754220

ter his dog scared the birds off the Estuary.

- £400 worth of damage caused by vandals at Ryan's Field.
- Volunteers clean up 65 bags of rubbish and one fridge from the nature reserve.
- Through routine avian influenza monitoring, a dead Mute Swan and a dead Herring Gull were reported to the DEFRA bird collection line; both tested negative for the H5N1.
- On 24 June, Dr. Nic Berry, King's College, London, will be undertaking chemical analysis on the mudflats for invertebrates. To do this work he has received special permission from the authorities.

Jenny Parker, RSPB Warden

Hidden Words Quiz by Cleverclogs

This time we are looking for sports and games.

Example: TeD IS CUStomising his car. Answer = discuss

Entries in by July 20, with a first prize voucher of £20 to be spent with any of our advertisers, and a lucky dip voucher of £5, drawn from all entries.

1. She used to belong to the Richmond Arts Society.
2. Angela crossed her arms and refused to play.
3. I saw a large box in Gary's drive. I wonder what it is.
4. Let's make the room look nice, put the rug by the fireplace.
5. They'll catch him. Interpol operate all over the world.
6. He looks like he's in shock – eyes wide open, hair on end...
7. Make the violin speak! Stroke the bow, linger on the notes.
8. Fancy clinging on to all your childhood toys! Just keep some.
9. Very often, Nissen huts were used by farmers for storage.
10. You can still see the odd curl in grandma's hair.
11. Look! A rat! Eating the birds' food. Chase it away.
12. At the party there'll be food, punch and balloons everywhere.
13. "You don't need to ask". I ingratiatingly said.
14. The saucepan's hot – put it at the back to keep warm.
15. Take him off the pitch and put Thomas on in his place.

Answers to quiz in last issue

- | | |
|---------------|------------------|
| 1. Edam | 9. Boursin |
| 2. Emmental | 10. Tilsit |
| 3. Cheddar | 11. Derby |
| 4. Feta | 12. Saint Paulin |
| 5. Yarg | 13. Stilton |
| 6. Manchego | 14. Cheshire |
| 7. Raclette | 15. Ricotta |
| 8. Port Salut | |

The winner of the £20 voucher was Mrs H Evered and the £5 lucky dip was won by Mrs D Stevens

Bird Life & the Menace of Crows (Part 1)

When I realised that jackdaws were building a nest in my chimney I was not sure how I felt about it. This could lead to complications I thought and it might be bet-

ter to discourage them, so to that end I lit a small fire in my grate, a smoky one, hoping the birds would take the hint, which they didn't.

Watching them come and go and being very fond of jackdaws I decided to let things take their course and watch developments. The many comings and goings continued always with a watchful eye on me. Not only did my back yard fill with dropped things and sticks, so did my fireplace. With all that activity they must finally have built a considerable pile within the chimney. During one morning of building I saw one of the jackdaws take a substantial twig from a flimsy platform of a nest high in the tall sycamore trees of the Rope Walk and stuff it down my chimney.

Very audacious I thought, consid-

ALLAERIALS

get set for digital Digital Aerial & Satellite Tv Specialists
Registered Digital Installer

Digital Aerial Installations & Upgrades
Freesat Supplied & Installed
Tv's, Video's, Freeview, Satellite Systems Setup Service
All Work Guaranteed * Fully Insured *
Reliable Local Engineer, Free Friendly Advice

Call Jonathan on **01736 759225**

Mobile 07979503907 Email info@allaerials.co.uk

www.allaerials.co.uk

ering that flimsy nest was put up there by carrion crows, the not to be messed with birds around here.

This episode has a second part. In the afternoon I was alerted to the usual carrion crow's noisy call and saw the bird on my roof ridge showing all the signs of extreme annoyance. It was prancing about looking up at the jackdaw's chimney and displacing its anger by wiping its beak on the tiles. I am careful not to anthropomorphise any animal behaviour but this performance was extraordinary and did seem to have a human logic to it. Even so the jackdaws lived, and continued to build. I did wonder if that was the end of the matter.

Peter Morrell

Continued in next issue

Ladysmith Gardens



In the last Pump there was a piece about the history of Ladysmith Gardens in Hayle. This was of special interest as Hayle in Bloom is considering taking on the gardens as a project and the Hayle Area Plan Partnership, Heritage, Culture and Environment Delivery Team, which I chair, is keen to put up some appropriate signage. I spoke with

town historians Brian Sullivan and Georgina Schofield and they confirmed that they were familiar with the story presented in the last issue but that they had no confirming documentation.

As the land is owned by the Town Council I took a look at their deeds. This is where things become murky. The deeds, dated 1940, show the land (9 1/2 perches) being sold by the Great Western Railway to Hayle Parish Council for £50. At present day prices this is about £9,000 per acre – clearly not a donation. Nowhere on the deeds is the name Ladysmith Gardens mentioned. I asked the Historic Environment Service to look at historic maps and they sent me snippets for 1880, 1907, 1930 and current.

The triangle of gardens look much the same in all of the maps but none of them show any name. I understand that GWR owned a lot of the land in the area of the station so it is likely that they owned these gardens back when the station was built.

The story of the donation to the town looks unlikely but we are left with an interesting question: when was the land named 'Ladysmith Gardens'? The siege of Ladysmith was in 1900 and the Boer War

	W. J. WINN FUNERAL & CREMATION DIRECTOR PRIVATE CHAPELS OF REST 24 HOUR SERVICE	
69 FORE ST HAYLE TR27 4DX 01736 752124	&	TRENWITH TERRACE ST IVES TR26 1QUE 01736 793029

ended in 1902, so it must be after that.

If anyone can shed any light on this mystery, or know of any Hayle involvement with the Siege of Lady-smith, please contact me:

01736 753184 or

jb@john-bennett.com

**John Bennett Deputy Mayor,
Hayle Town Council**

BIZ AND BYTES

07974 647524

01736 755971



If you require computer assistance, either training or to resolve a problem then give us a call. Visits arranged to suit you.

www.bizandbytes.co.uk

enquiries@bizandbytes.co.uk

Looking after the home user and small businesses. WEBSITES•BROADBAND• TRAINING•COMPUTER SUPPLY•TYPING

Walkers Are Welcome

At the last meeting of the Traffic and Transport Group an initiative for encouraging walkers into Hayle was put forward called "Walkers are Welcome".

It is a bottom-up community-led initiative which helps strengthen a town's reputation as a place for visitors to come to enjoy the outdoors, bringing useful benefits to the local economy. It helps to ensure that footpaths and facilities for walkers are maintained in good condition, benefiting local people as well as visitors. It can contribute to local tourism plans and regeneration strategies.

'Walkers Are Welcome' was started in 2006 in Hebden Bridge, Yorkshire. As yet there are no participants in Devon or Cornwall,

ANGOVE SPORTS

40 Fore Street
Copperhouse
Hayle TR27 4DX
01736 752238

**Rackets repaired
and restrung.**



**For all sports
equipment,**

**clothing
and
fishing
tackle**



so Hayle could be the first 'Walkers Are Welcome' town locally.

To find out more about the scheme and how to join it, there are fact sheets available from <http://www.walkersarewelcome.org.uk/resources.html>.

These are:

The Walkers Are Welcome idea,
Six conditions for becoming a Walkers are Welcome Town,
How to become a Walkers are Welcome town,
A Case study (Hebden Bridge) and "Adopt a Path". If you can't access these online, contact the HAPP office and we can send them to you.

We shall be discussing the possibility of Hayle participating in this scheme at a meeting of the Traffic and Transport Group later in the year and collecting signatures of

support. If you support the idea of Hayle becoming a Walkers Are Welcome town, or want to know more, we would like to hear from you. Contact: Hayle Area Plan Partnership office 01736 755448 or jane.sharp@hayleareaplan.org.uk

TOO YOUNG TO JOIN THE WOMEN'S INSTITUTE ?

The image of Jam and Jerusalem is still very vivid when you talk to people about the WI. We still sing Jerusalem at the start of our meetings, nothing wrong with tradition! However, we are also involved with the present issues we are facing in these turbulent times. Being a member of the WI means that you are a part of an organisation that looks after women's interests the

world over, is involved in the community and offers education.

One of the campaigns of the National Federation of WIs is "No More Violence Against Women". Through WI resolutions and speakers you can be updated about what is going on in the world but the crafts and traditional skills, that are so often lost now, can be a big draw.

We, as the Hayle-East WI try to offer a mix to our members at the monthly meeting. Interesting and entertaining outings are offered through the Cornwall Federation of WIs. We understand that the pressures of modern life, with many more working mums, can put you off going to a meeting on a Tuesday night but it could mean that going to that meeting can give you a different perspective and the support and



NEIL WADE

**MOTOR ENGINEER
CENTRAL GARAGE**

10A HAYLE TERRACE, HAYLE



MOT CAR & MOTORCYCLE TESTING CENTRE

**DIESELS & CATALYSTS TESTED*SERVICING*REPAIRS*
WHEEL BALANCING*EXHAUSTS*TRACKING*
TYRES*BATTERIES***

PROVIDING SERVICING & REPAIRS TO ALL MAKES OF VEHICLE

**TEL 01736 756512 MOB 07990 981546
HOME 01209 610651**

friendship of fellow members.

We would love to welcome women of any age. You can go along as a visitor and give it a go. You just don't know until you have tried it. We meet the first Tuesday of each month at the Philip Smith Annexe, Hayle Day Care Centre at 7:30 pm. For more information please contact:

Geraldine Coombes, President,
tel: 01736-754442 or
Louise Gregory, Secretary, tel:
01736-753503.

LORD WESTWOOD

Aloe Vera Products

Aloe Vera has had fantastic results in helping sufferers of IBS, Crohn's, asthma, arthritis, eczema, psoriasis, ME, high blood pressure, acne and many more conditions.

For all your high-quality Aloe Vera needs, contact us on 01736 757428, or visit our website: www.healthbodywise.com or email westwoodpark@btinternet.com

Plants on the Towans

No 22 - Knotweed

Near the entrance of 'Fair for the Future' at Sancreed was a stall run by 'Fathen'. On that stall amongst other wild foods was a jar of Japanese Knotweed jam into which I stuck my index finger. It tasted a bit like rhubarb but without the bitterness; it was delicious.

Japanese Knotweed (*Fallopia Japonica*) is listed by the World Conservation Union as one of the top 100 of the world's worst invasive plants. A native of Eastern Asia, this herbaceous perennial has become very successful in Europe and the

Millpond View Care Home

– Hayle –

- Registered care home
- Skilled, trained nurses
- Experienced care assistants
- Excellent support staff
- Lovely location overlooking Millpond

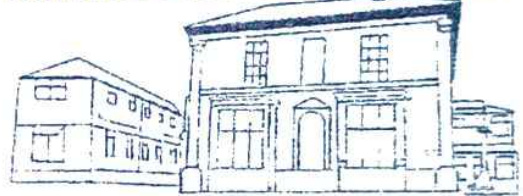
Maureen Tredinnick, Care Manager
01736-752759

SUNDAY, 16 JULY – 11AM:

Residents visit to Paradise Park

SATURDAY, 29 AUGUST – 2PM:

Summer Fete on the grounds



John BENNETT

Independent
Hayle Town Council
*Your representative for
Hayle South Ward*
Deputy Mayor 2008-2010

The Hayle in Bloom team is gearing up for the South West and national competitions. Volunteer for an adopt-a-plot and help us win Gold yet again! Join us at the Rugby Club on Monday 29 June at 7.30 pm or call chair Margaret Tanner on 756772.

The *HMS Plymouth* campaign received over 1,100 signatures and is trying to engage ING to support the idea. Read more on my web site.

Phone: 01736 753184

Email: jb@john-bennett.com

Web site: www.hayle.net

Promoted by and on behalf of John Bennett, of 16 Riviere Towans, Hayle, TR27 5AF.
Printed by Hayle Pump, Pratt's Market, Hayle, TR27 4AB.

USA. The rhizomes can withstand temperatures as low as -35 C. There are a number of sites on the Towans away from the sea where this plant is thriving and this distance from the coast is a clue as to its control – if needs be. In experiments conducted in British Columbia it was found that a sea water spray was effective. Some herbicides (poisons) are also effective but these have a devastating effect on everything in the local environment.

However invasive it may be, like all plants it has its gifts for us. The flowers are valued by bee-keepers and the honey made from them is called 'Bamboo Honey'. The young stems are edible as a spring vegetable and there are a couple of dietary supplements made from it. It is an important concentrated source of

resveratrol (replacing grape products) and a concentrated source of emodin, used to regulate bowel motility. Its roots are used traditionally in Japan and China as a natural laxative...and that lovely jam – mmmmmmmmm..

Check out www.fathen.org

Michael Locke

Knit & Natter

Knit & Natter with Sue every Tuesday at 1pm.

Bring your knitting or crochet and something to sit on, Sue will provide tea & biscuits. Outside Pratt's Market at her fabric & wool stall

PHILP'S

FAMOUS PASTIES

EST



1958

BAKING 7 DAYS A WEEK

FOR THE GREAT TASTE OF
CORNWALL'S
PREMIER PASTY MAKERS
WITH OVER 50 YEARS
EXPERIENCE,
VISIT US NOW
AT OUR SHOPS AT:



1 East Quay,
Hayle
TR27 4BJ
01736 755661

1 Foundry Hill
Hayle
TR27 4HL
01736 753302

Market Place
Marazion
TR17 0AR
01736-710332

The Square
Praze an Beeble
TR14 0JR
01209 831360

FATHER'S DAY

In June we celebrate Father's Day
Happy to be part of his family,
He was always there when we wanted to play,
And read us a story when sat on his knee.

In the garden we'd play 'Bat and Ball',
And Daddy would push the swing,
He'd teach us how to ride a bike,
And often we'd laugh and sing.

Dad helped us with our homework,
And would take us to the park,
If we fell over, he'd give us a hug,
And listen if we wanted to talk.

When his little girl grew up,
He'd walk her 'Down the Aisle,
And often with the son of the house, He'd
enjoy a joke and a smile.

To feed us, and rear us,
He couldn't have worked harder,
He made us feel precious,
A WONDERFUL FATHER

D.M.C.

Computer Repair IT

Chris Chapman Computer Technician

****No Fix/No Fee****

Broadband Setup Data Backup
Data Transfer New PCs Built
Home Networking Software Problems

01209 216884 0777 760 4354

Email contact@computer-repairit.co.uk

www.computer-repairit.co.uk

LINDSAY'S DOG GROOMING

*Dog grooming for all sizes,
breeds & coats.
Specialising in Poodles.*



For more information,
contact Lindsay on
01736 753864 -or- 07792 849240

.....
*Situated at Local
Connor Downs collection
in Hayle & delivery*

MAKE MOMENTS MATTER APPEAL

"Because Adult lives are precious too"

Many of you will know about the services provided by Cornwall Hospice Care at its two adult hospices – Mount Edgcumbe, St. Austell and St. Julia's in Hayle. As hospice nurses we are passionate about the specialist care we give to patients and their families in Cornwall. We believe everyone with a life limiting illness should be able to access the specialist services we provide. They should have relief from pain and other distressing symptoms to enable them to live their life to the full, for however long that may be. They should have the choice to die with dignity in a caring

Luxury Sliding Door Wardrobes

at AFFORDABLE prices!

For a Full colour brochure and price list
Call SpaceMaster in Cornwall

01326 377 620

Many styles made
to measure for
YOU!

Any room
Any shape
Any size!



and supportive environment for both themselves and their loved ones.

As a charity we have been proud to offer specialist medical care as well as practical, emotional and spiritual support to so many thousands of patients. In fact, Cornwall has had an adult hospice service in the county for nearly 30 years.

However, it is with great sadness that we have to tell you that these services are at risk. We simply haven't enough funds to meet our annual running costs of £5.3 million – that's equivalent to £11 a minute.

At a time when we are faced with ever-rising costs we have noticed a huge drop in voluntary income due to the current economic climate, which means we are now facing a massive £400,000 shortfall this year. This is why we are appealing to you,

the people of Cornwall, to consider making a small contribution and help secure the long-term future of this truly Cornish charity. We want to be able to continue to help the thousands of families across Cornwall to cope at this very difficult time. It is not just our patients, but also their families, their children and loved ones that need us.

Please support our *Make Moments Matter Appeal* either with a one off donation or alternatively by committing to give a small monthly contribution.

Yours sincerely

Sam Pleasants, Sister, St. Julia's Hospice,

Sue Friend, Sister, Mount Edgcumbe Hospice

Please call:

01726 66869 or 65711 or send cheques to Cornwall Hospice Care, Porthpean Road, St. Austell, Cornwall, PL26 6AB.

YOGA

Beginner's Classes at the
Passmore Edwards Institute

Mondays: 7-8.30pm

Tuesdays: 9.30-11am

Fridays: 9.30am & 7.15-8.30pm

Drop-in £5/class or book 10 for £45

Contact Gwyn on 01736-740969
Mobile 07815-945695

Wanted

By local camera enthusiast:
a photographic enlarger, must do
6 X 9 negatives.

01736 752787 (day)

01736 752960 (eve)

KIND OF CORNISH

The Great Western Jazz Company is well-known in the Hayle area, and are currently appearing every Thursday evening at the Bird In Hand, Paradise Park. Their new CD, 'Great Western Main Line', is an excellent example of their usual eclectic and interesting mix of mainstream and traditional numbers.

The 3 piece front line of Bob McTeare, trumpet and flugel horn, John Lancaster, clarinet and saxes and Paul Hawkins trombone, is confident and obviously very well rehearsed, and they are well driven by the swinging rhythm section of Dan Roach, guitar, John Chapman bass guitar and Bobby Stephens drums. Bob McTeare contributes some easy, relaxed vocals on numbers such as 'St James Infirmary', 'Comes Love' and even Van Morrison's 'Moondance', and guitarist Dan Roach is featured to good effect on Sidney Bechet's 'Si Tu Vois Ma Mere'. All the tracks and soloists are fine though – the Great Western Jazz Company goes from strength to strength and this CD is thoroughly recommended. (70 mins, £10.)

The latest CD by the 12 vocalists known as the Trelawny Singers, with piano accompanist Patricia Murley, is entitled 'Precious Memories'. The title track, with soloist Simon Glanville, sets the mood for what is a well produced and executed example of their very listenable close harmony style and repertoire. Other highlights include 'May You Always', with

Cabinetmakers & Joiners.
**JOHN
ANDREWS**
Traditional Bespoke Woodwork

**Traditional Windows
Doors & Staircases**

Hardwood or Softwood

Entrance Gates

Memorial Bench Seating

Joinery Fitting Service

07765 341 616

01736 741 064

beautiful solo vocal work from Graham Baker, 'The Lily of the Valley', with soloist Danny Johns, and the ensemble pieces 'When I Fall in Love' and 'Bridge Over Troubled Water'. The Trelawny Singers were formed in 1992; the popularity of their music since then has enabled the choir to raise many thousands of pounds for charity, and they are currently heavily involved in the Precious Lives appeal for the Children's Hospice South West. And on the subject of young people, I should also mention the CD sleeve, which has some lovely individual photos of all the performers as children. This is a very fine album, and the many local admirers of close harmony groups will love it. (56 mins, £10.99)

The review copies for this column have kindly been supplied by:-

Country Skittles ...



...welcomes Pump readers
of all ages.

4 traditional 9-pin skittle
lanes

Restaurant & snack menu
available at all times

Roast lunches served all
day on Sundays

Fully licensed bar

Target shooting gallery

Crazy golf

Pool Table football

Air hockey Batak

Lots of traditional board
games & many other
games to play.

We cater for groups large and
small, and provide an ideal venue
for family get-togethers, birthday
parties and works outings.

To get to us, take the B3302 out of
Hayle towards Helston and turn
right when you see our sign just
past St Erth Praze. We are about
half a mile up that road.

Booking in advance is advisable at
busy times.

For further information ring
us on 01736 850209

THE EMPORIUM
33 FORE STREET
REDRUTH
CORNWALL
TR15 2AE

Tel.: 01209 216494

The Emporium, which is opposite
Peacock's in Redruth's main thor-
oughfare, stocks a large number of
items relating to Cornwall, not only
CDs, but also DVDs, books, flags,
postcards, craftwork and so on.
Lorna and John, who own the Em-
porium, are always on the lookout
for suitable Cornwall-related arte-
facts on a sale-or-return basis,
please phone the above number.
The Emporium's website is:-
www.theemporiumredruth.co.uk

Goudie Charles

SIoux-THE-FOOT

Susan Dawson

State Registered Chiropodist
Mobile Service

Bsc (Hons) Pod SRCH MChs
Rosudgeon

Tel: (01736) 76 33 00

KRIS GAYLE LONDON GIG

Hayle-based diva Kris Gayle
makes her first London appear-
ance at the award-winning 606
Club in Chelsea on Wednesday
July 8th. She will be backed by
Hayle-born piano virtuoso Viv Rodd,
plus UK jazz legends Jeff Clyne on
bass and Trevor Tomkins on drums.
Several of Kris's local fans have
promised to make the trip to support

her, so it will be good to see some friendly faces in the audience at this exciting time!

Kris also has two local gigs coming up. These feature her smooth jazz duo *knight&gayle* with guitarist/vocalist John Knight, and both take place at the Brasserie and Wine Bar, Chapel Street, Penzance. The dates are Sunday 28th June and Sunday 26th July. For info and reservations ring 01736 350222.

Kris's latest album '8.00 am', the title track of which is currently being featured on Sir Michael Parkinson's website www.michaelparkinson.tv, is available online at www.jazzcds.co.uk, or from 01736 757351.

Goudie Charles

PRAZE HAYLE MALE CHOIR

Praze Hayle Male Choir has continued to be active in presenting concerts around the district.

On Easter Sunday, the choir sang a varied programme of items to a full St Elwyn's Church. The choir's guests for this programme were the St Piran Singers of Heyl. This was a first for the ladies, as they were in their new uniforms for the first time. The ladies performed several pieces of their repertoire, and to close the concert, they joined with the men to present two items. These were received with much appreciation.

On the 25th of April, the choir attended Trevithick Day at Camborne, but unfortunately, a shortened programme was performed, due to the inclement weather.

On 9th May, Praze Hayle Male

PASSMORE EDWARDS INSTITUTE

13-15 Hayle Terrace, Hayle, TR27 4BU
Hayle's Village Hall, Charity #268429



MEETING ROOMS FOR HIRE

- | | |
|---|-----------------|
| Passmore Edwards Room | £18 per session |
| Boardroom table seats 16, plus seating for an additional 12. Ideal for business and community meetings. | |
| Denis Hollow Room | £20 per session |
| Newly refurbished. Suitable for meetings, exercise, dancing, etc. | |
| Silvanus Trevail Room | £12 per session |
| Chairs and tables for 40. Suitable for informal meetings, arts & crafts, etc. Adjacent to kitchen | |
| Trevithick Room Upstairs | £15 per session |
| With raised platform. Can seat 60+ for lectures and large meetings, or for use as an exercise room. | |
| Harvey Room Upstairs | £15 per session |
| For groups of up to 20 for meetings, interviews, etc. | |
| Tyringham Room Upstairs | £10 per session |
| For small meetings, interviews, etc. | |
- Upstairs rooms do not have disabled access.*

Three sessions per day: morning, afternoon & evening
For bookings and more information contact:

01736-756055 or www.hayle-pei.org.uk

Choir hosted the Chippenham Male Voice Choir, in Cornwall for their fifth visit. The concert was held in St Elwyn's Church, Hayle, and yet again the church was full for a wonderful evening of singing. Following the concert, both choirs enjoyed a supper evening at the Hayle Rugby club.

The highlight of the recent past has been the recording of the choir's first CD. This was recorded in St Michael's Church, Newquay, over two evenings at the end of March. This CD is now available for purchase from Harry Wright, on 01326 563677, or any choir member will arrange for you to buy a copy.

June and July are going to be busy months for the choir. On 2nd June the first of four concerts will be given at the Porthminster Hotel, St

Des Button

Springfield
33 Clifton Terrace
HAYLE TR27 4BP
01736 753211

ELECTRICAL
SERVICES &
SUPPLIES

Part P
Registered



Ives. The remaining three will be on the first Tuesday of the next three months. Connor Downs School Fete will also figure in the programme, as will concerts at St Anta, Carbis Bay and of course, the Heylfest Combined Choir concert on the 30th July.

As with all choirs, additional members are always welcome. Why not come and sample our singing and comradeship at a practice night? The choir holds its practice on a Tuesday evening in the Methodist Church Schoolroom at 7:30 pm.

For further details contact Roger Evans, Secretary, on 01736 754681 or on line at

www.prazehaylemalechoir.co.uk

HAYLE AND DISTRICT BOWLING CLUB

The winter season for bowling on the green has gone very well with Wednesday afternoons seeing up to twenty players enjoying the game and Sunday mornings being used to encourage new bowlers as well as some teams having a game. The Sunday training time has seen some junior bowlers trying out their skills. The Club welcomes new people into the sport, so why not come and give it a try?

Our winter quiz was well supported and we thank everyone who took part. Our thanks to Mr. & Mrs Wyse of Bigglestons for helping with the circulation of quiz sheets. With all quiz sheets in, the winners were Mr. James and Mrs. Bray with near perfect entries.

The Club wishes to thank all those who took part in the Easter Egg draw which had fifteen prizes this year. Most of the chocolate was won locally.

Now that the Club has its new clubhouse, the Short Mat section will be playing there. Anyone wishing to try this type of bowling will be most welcome.

The summer season of leagues has commenced but, with some games cancelled already due to rain, we hope for some nice dry sunny days.

We wish to thank everyone who helped in any way in getting this community project underway.

W.S. Wallis, Treasurer

CRAFTS IN THE LIBRARY

"A hands-on Spindle Spinning Workshop with Jinty" the poster read.

"Come and see a demonstration, learn and then join in!" They did. "Great for de-stressing"... well, it's easy when you know how ... (to concentrate on being in the moment, feeling the yarn, the twist, the slight tug; just to watch those spindles twirl!)

On Tuesday, 5th May, from 11am to 1pm the Week of Weaving, Spinning and Dyeing was celebrated in the Hayle Library. People had come to return or borrow books and a lot stayed to watch or join in.

The next day a different form of spinning was to come. The treadle

wheel – a much later invention than spindles which can be dated back to the Bronze Age. Indeed, spindles and the whorls can be seen in a lot of museums such as St. Ives, Penlee, RCM and further away, the British Museum.

A world of discovery lies in the spindle whorl.

PS Ed. note: Jinty will be at Phillack Church Arts and Crafts Fair during Heylfest at the end of July, especially on the two Sundays, so come and have a go or just look and watch and chat a bit.

(name and address supplied)

Anagram :

Election Results –

Lies – Let's Recount

CLIFFORDS

PLUMBING AND HEATING

- Boiler Changes
- Full Central Heating
- Servicing
- Landlords Certs
- Dripping taps to complete bathrooms
- Full bathroom design and installation
- All plumbing work undertaken
- Free Quotations

Fully Qualified, Corgi Registered and Water Industry Approved

RELIABLE, CLEAN AND FRIENDLY SERVICE

01736 755170

07761 938183





O'DELL SIGNS OF ALL TYPES

Perspex fabrication
and Boat Windows

Perspex lettering,
Plastic, Engraving,
Magnetic, Posters,
Illuminated signs
Signwriting,

VINYL LETTERING
for Vehicles & Signs

HAYLE 01736 753656

1, Turnpike Road, Connor Downs

VOLUNTEERS SOUGHT

Are you interested in art & craft, reading or singing? Do you have a few hours to spare during week-days? Daphne Ray works as a Recreational Therapist at Millpond View Care Home in Hayle & would like to hear from anyone who thinks they might enjoy assisting with the various activities.

No experience necessary, just a cheerful willingness to join in the fun & enjoyment of working with people. Training & support will be given. If you are interested please contact Daphne to find out more details. Telephone 01209 313746 or email her deray2003@hotmail.com

Index of Advertisers

All Aerials...25
Andrews, John...33
Angove Sports...27*
AWG-Solutions...12
Baby Yoga...17
Barton Print...24
Bigglestons...39*
Biz & Bytes...27
Bluff...11
Calmtime...18
Central Garage...5*
CCC...19
Cliffords Plumbing...37
Colin's M'ket Garden...16*
Computer Repair-IT...31
Corn Mill studio...14
Country Skittles...34
David N'jie Painter...18
Des Button...36

Farm Shop...21*
Fernleigh...17
Flowertime Florist...8*
Grounds Care...3
Gwithian Holiday Suites...7
Hayle Home Furnishings...6
J C Electrical...23
John Bennett...29
Kate de Wreede (Guitar)...
Keast, F L...13*
Kernow Elec & Plumb...8
Kidz R Us...4
Lindsay's Dog Groom...31
Lord Westwood...29
Millpond Home...29
Neil Wade...28
O'Dell's Signs...38
Orchard, Alan...22
Passmore Edwards...35
Penpol Garage...15
Pet-Time*...9

Philp's Pasties...30
Plantech...15
Roy Hayes...10
Singer & Pfaff...7
Sioux-the-Foot...34
Space Master...32
Suites & Sofas...39
Sumo Hire...10
Sylvia's Classes...12
Winn, W.J...26
Yoga...32
You can pick up a copy at those marked with an also at Hayle Library, Hayle Day Care Centre, Hayle Community Centre, Bodriggy Health Centre, Copperhouse P.O., Martins P.O., Connor Downs P.O. Wyevale Garden Centre, and many other places.*

BIGGLESTONS

TRADING IN HAYLE FOR OVER 100 YEARS

Please try us first for the best of Hardware,
Ironmongery, Kitchenware, Paraffin
and Garden Supplies.

01736 752219

*Summer, Autumn, Winter, Spring
We can supply 'most everything*



SUITES & SOFAS

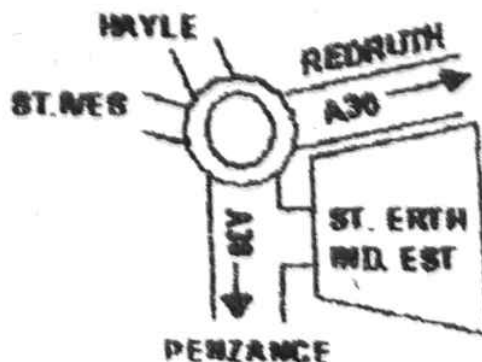


ENDS OF LINE
CANCELLED ORDERS
FACTORY CLEARANCES

01736 759586

07779 760686

THE FURNITURE WAREHOUSE
IS AT UNIT M
ST ERTH IND. EST.
NEAR HAYLE





HAYLE TOWN COUNCIL

List of Hayle Town Councillors 2009/2010

<u>COUNCILLOR</u>	<u>TEL. NO.</u>	<u>HOME ADDRESS</u>
<u>North Ward</u>		
BLAKELEY, Harry	757428	7 Bodriggy Villas, Hayle, TR27 4PG
CAPPER, Brian	753838	Sweetlarks, 25 Riverside, Angarrack, Hayle TR27 5JD
COAD, Graham	756367	4 Springfield Close, Phillack, Hayle, TR27 5AH
COOMBE, John	752831	4 Commercial Road, Hayle TR27 4DG
GIRLING, David	753811	7 Polvelyn Parc, Hayle, TR27 4JP
POLLARD, John	752364	5 Beramic Close, Connor Downs, Hayle, R27 5DP
VACANCY		

South Ward

BENNETT, John	753184	18 Riviere Towans, Hayle, TR27 5AF
BIRCH, Paul	755424	10 The Pathway Fields, Hayle, TR27 4BE
HEAD, Chris	759317	Inverewe, Penpol Avenue, Hayle, TR27 4NQ
HEAD, Mrs Jacqui	759317	inverewe, Penpol Avenue, Hayle, TR27 4NQ
HORWELL, Richard	752597	5 Dracaena Avenue, Hayle, TR27 4LZ
NINNES, Jayne	753336	30 Ash Drive, Hayle, TR27 6PF

East Ward

LELLO, Robb	757507	29 Treeve Lane, Hayle, TR27 5DQ
VACANCY		

Please note that the process for selecting the Councillors to fill the two vacant seats will start in August/September 2009.

If you are interested in standing please keep an eye out in the local press and on the Town Council's notice boards and website

TOWN CLERK'S OFFICE, HAYLE COMMUNITY CENTRE,

58 QUEENSWAY, HAYLE, TR27 4NX

01736 755005